

Temporal region

linea temporalis sup., arcus zygomaticus

skin

n. auricularis magnus

m. temporoparietalis (n.VII.)

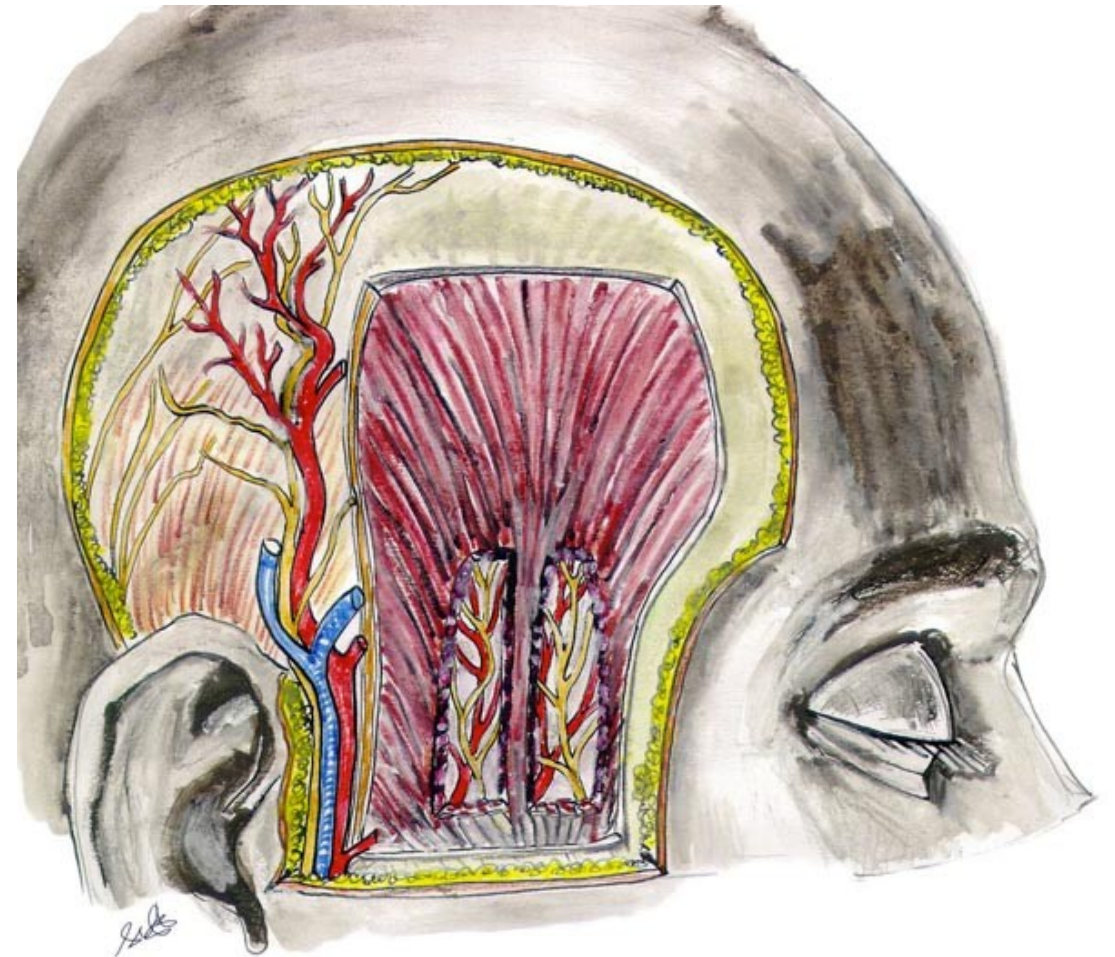
a., v. temporalis spf. (v. retromandibularis

n. auriculotemporalis

fascia temporalis

m. temporalis

a.,v., n. temporalis prof.



Regio parotideomasseterica

Superior - arcus zygomaticus

Ventral - m. masseter

Caudal - mandible

Posterior – line through tragus

glandula parotis

fascia parotideomasseterica

ductus parotideus

plexus parotideus n. VII.

pars spf. et prof. gl. parotis

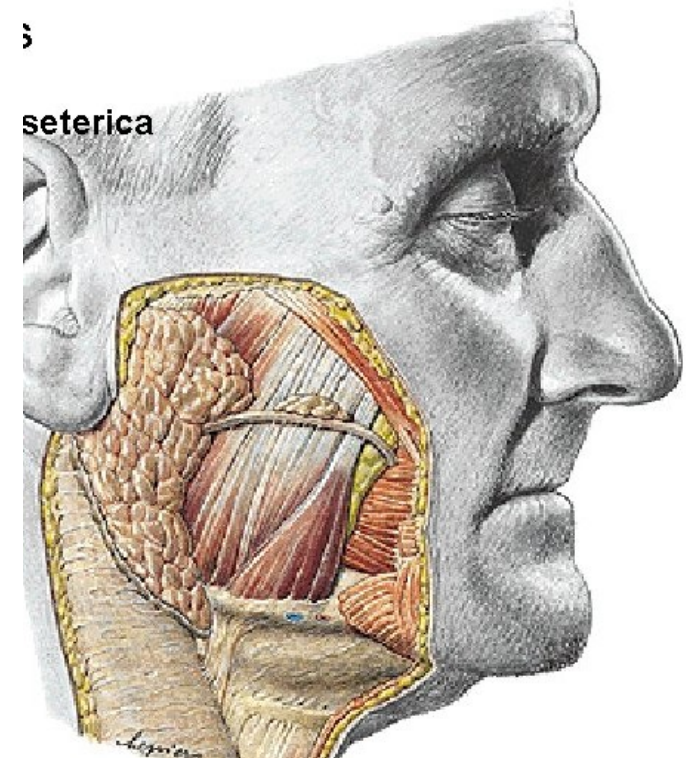
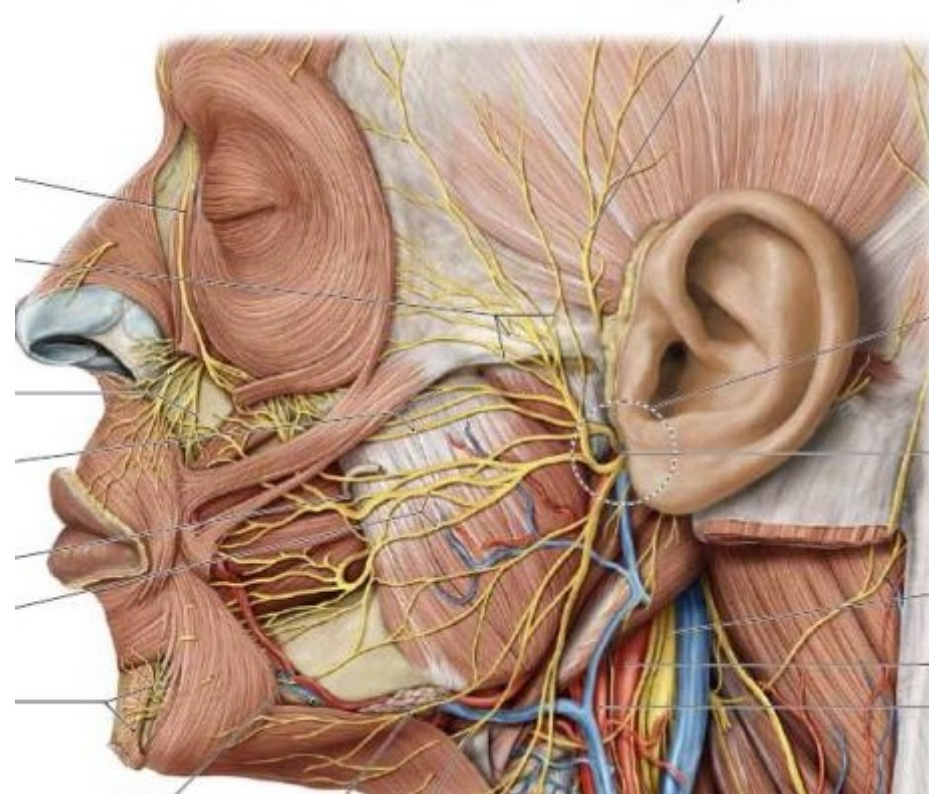
a. temporalis spf.

a. transversa faciei

v. temporalis spf., v.

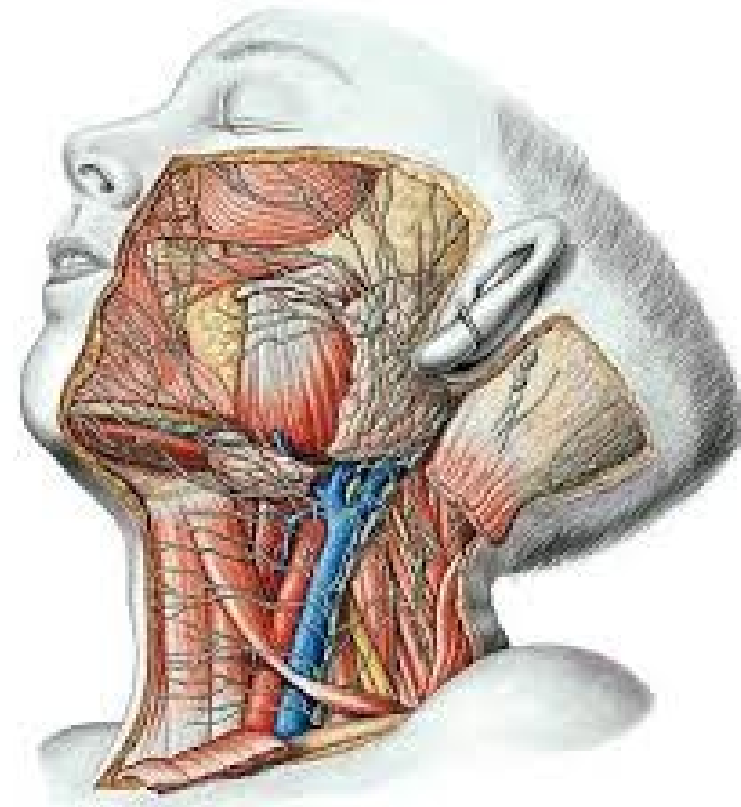
retromandibularis

n. auriculotemporalis

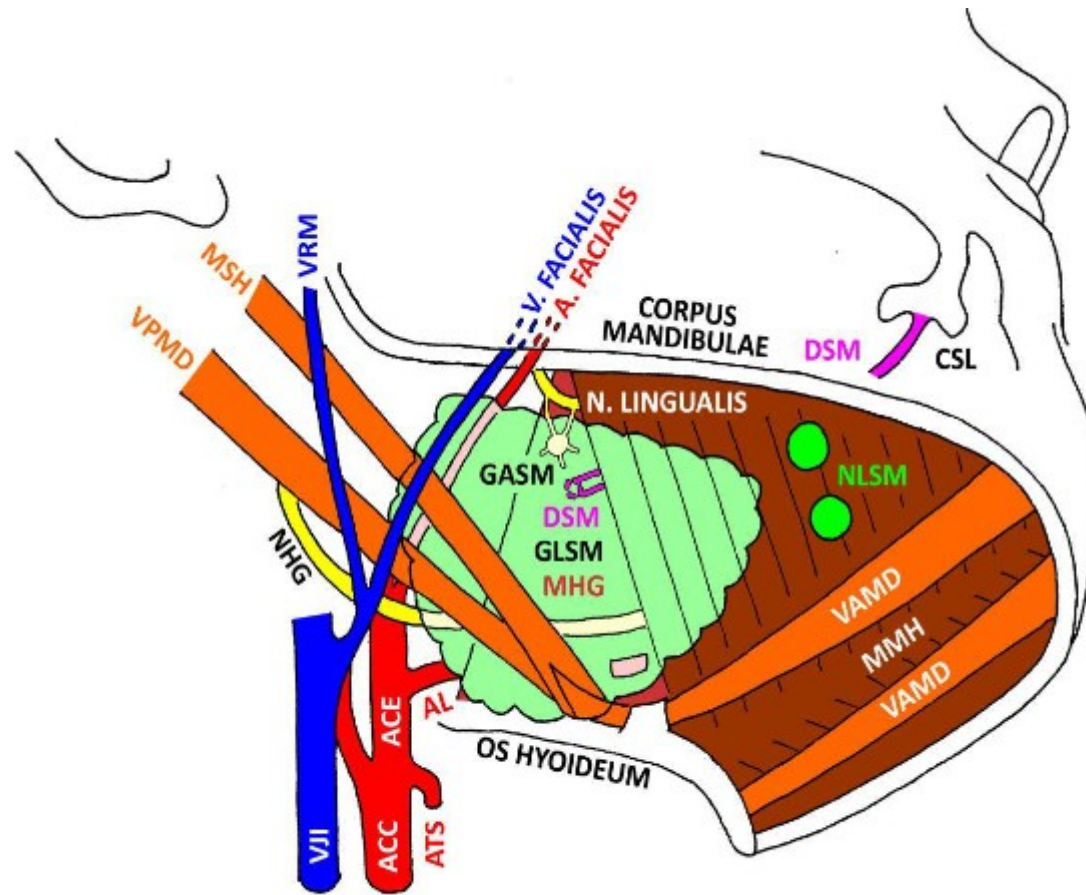


Retromandibular region

n.VII.
r. stylohyoideus
(m. stylohyoideus)
r. digastricus
(venter post. m. digastrici)
n. auricularis post.
a. auricularis post.
(a. carotis ext.)

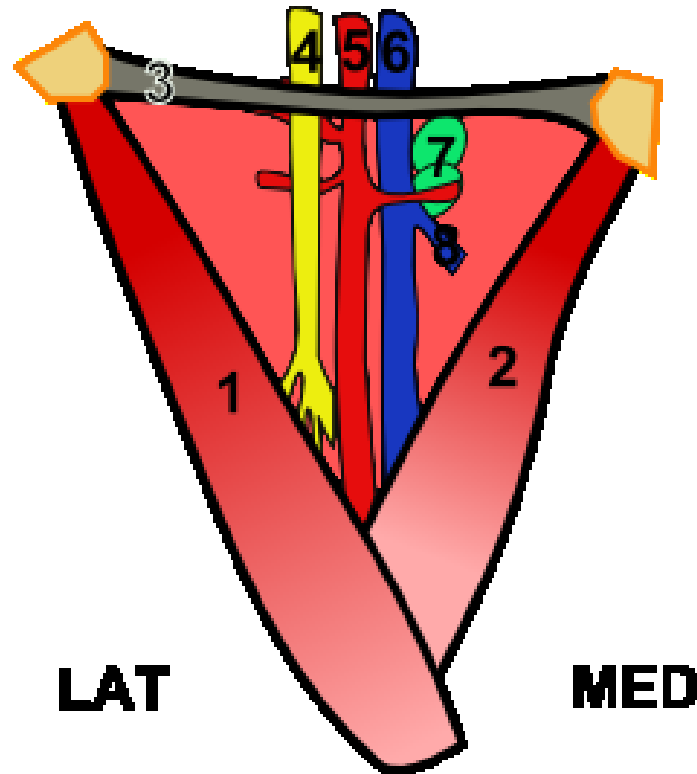


Trigonum submandibulare



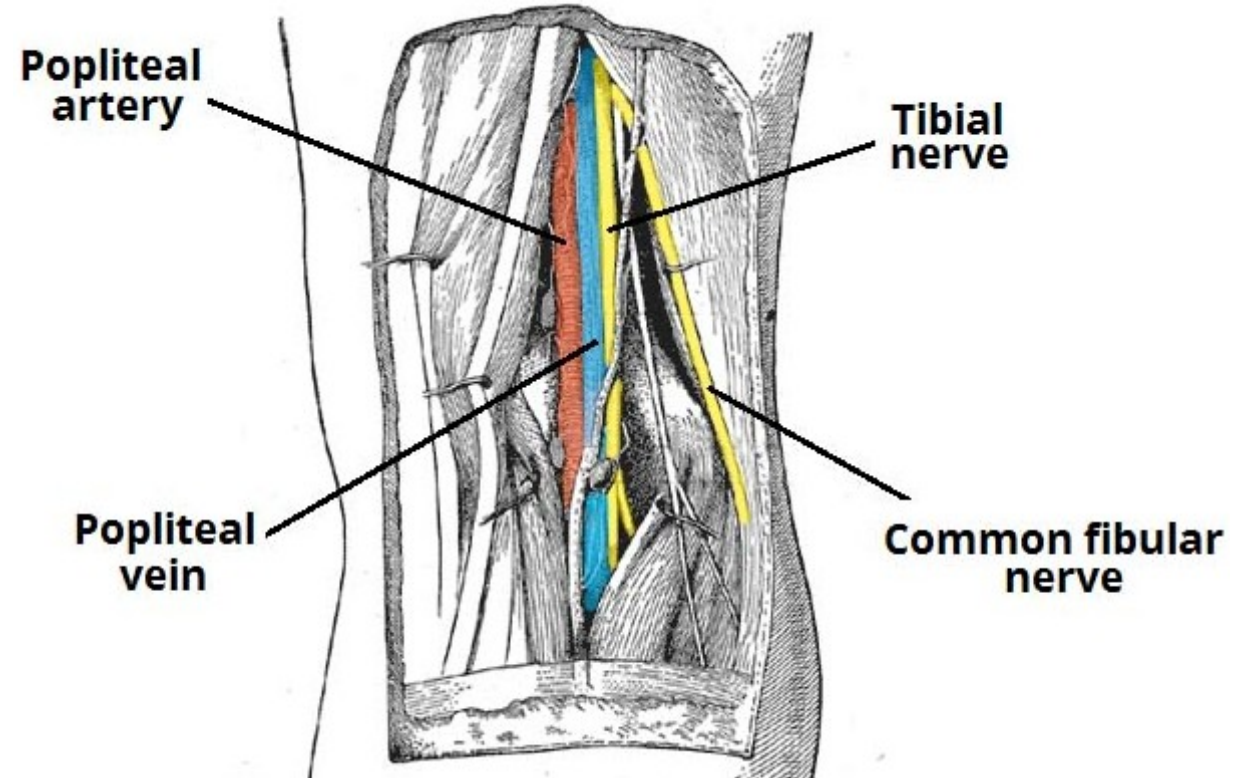
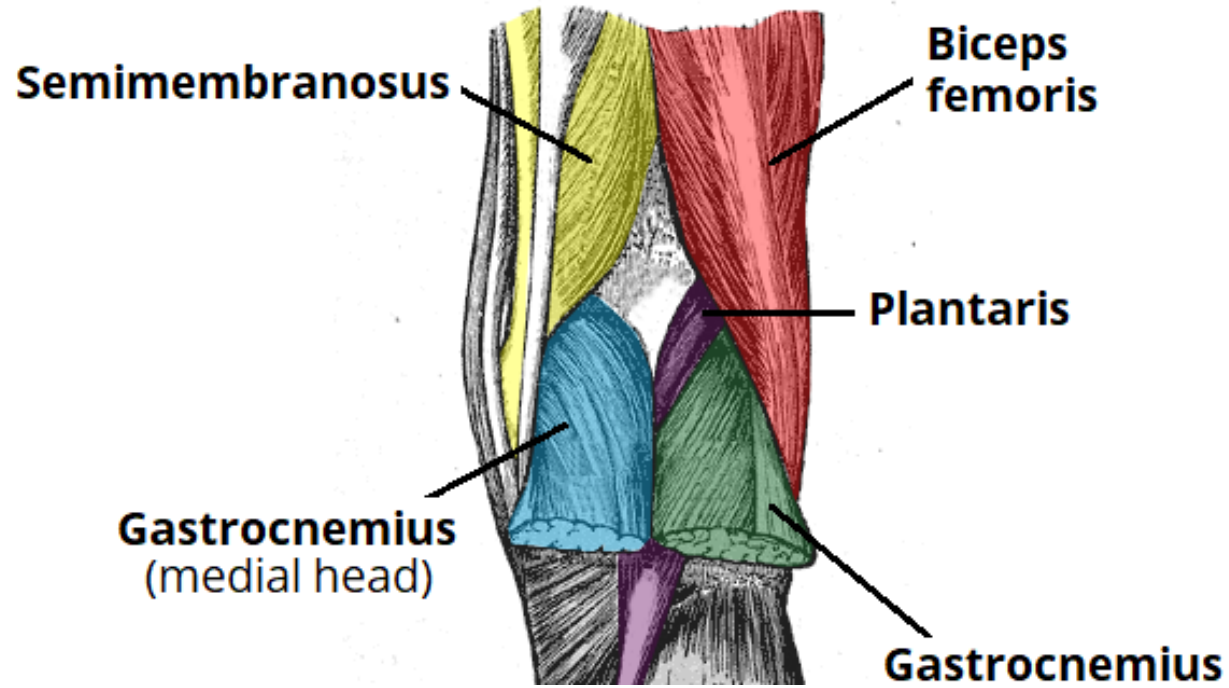
- VRM - V. RETROMANDIBULARIS
- MSH - M. STYLOHYOIDEUS
- VPMD - VENTER POST. M. DIGASTRICI
- NHG - N. HYPOGLOSSUS
- GASM - GANGLION SUBMANDIBULARE
- DSM - DUCTUS SUBMANDIBULARIS
- GLSM - GLANDULA SUBMANDIBULARIS
- MHG - M. HYOGLOSSUS
- AL - A. LIGUALIS
- ACE - A. CAROTIS EXTERNA
- VJI - V. JUGULARIS INTERNA
- ACC - A. CAROTIS COMMUNIS
- ATS - A. THYROIDEA SUP.
- CSL - CARUNCULA SUBLINGUALIS
- NLSM - N. L. SUBMANDIBULARES
- VAMD - VENTER ANT. M. DIGASTRICI
- MMH - M. MYLOHYOIDEUS

Trigonum femorale

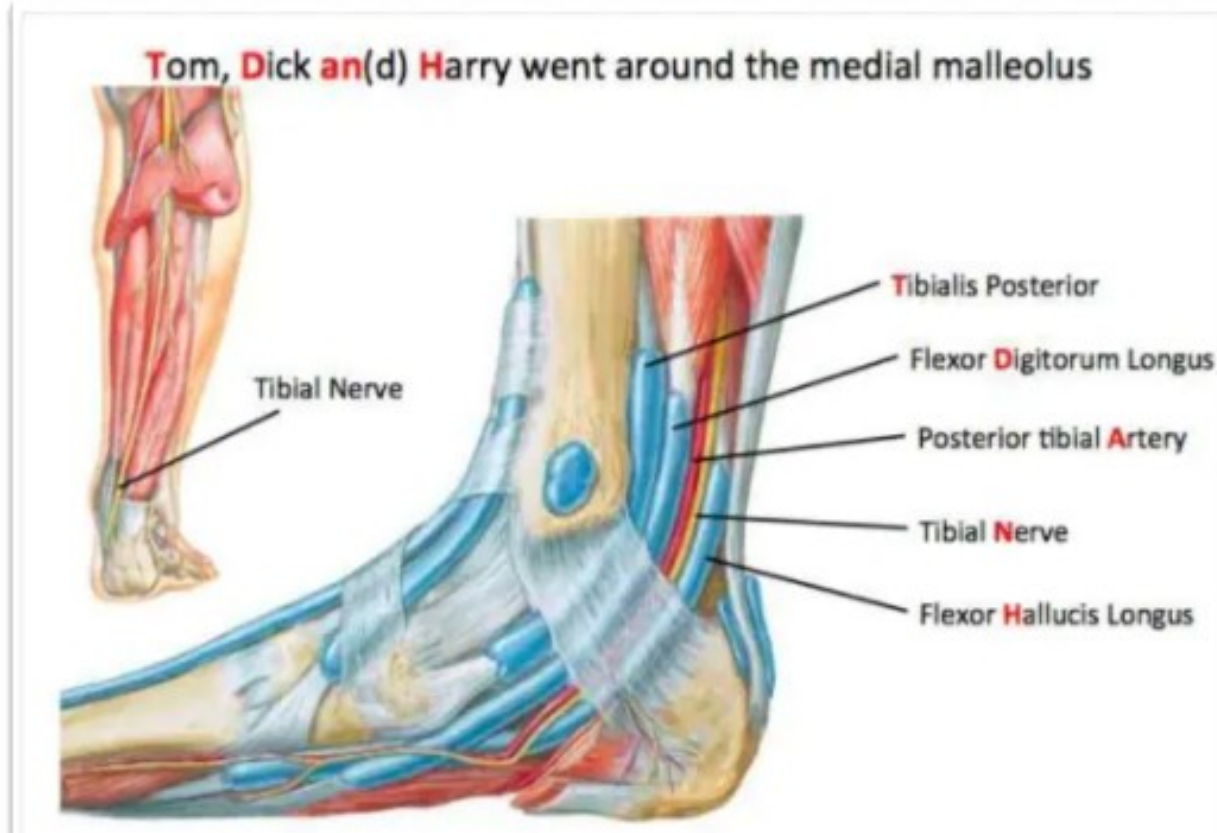


- 1 – m. sartorius
- 2 – m. adductor longus
- 3 – lig. inguinale
- 4 – n. femoralis
- 5 – a. femoralis
- 6 – v. femoralis
- 7 – nodi lymphatici inguinales
profundi
- 8 – v. saphena magna

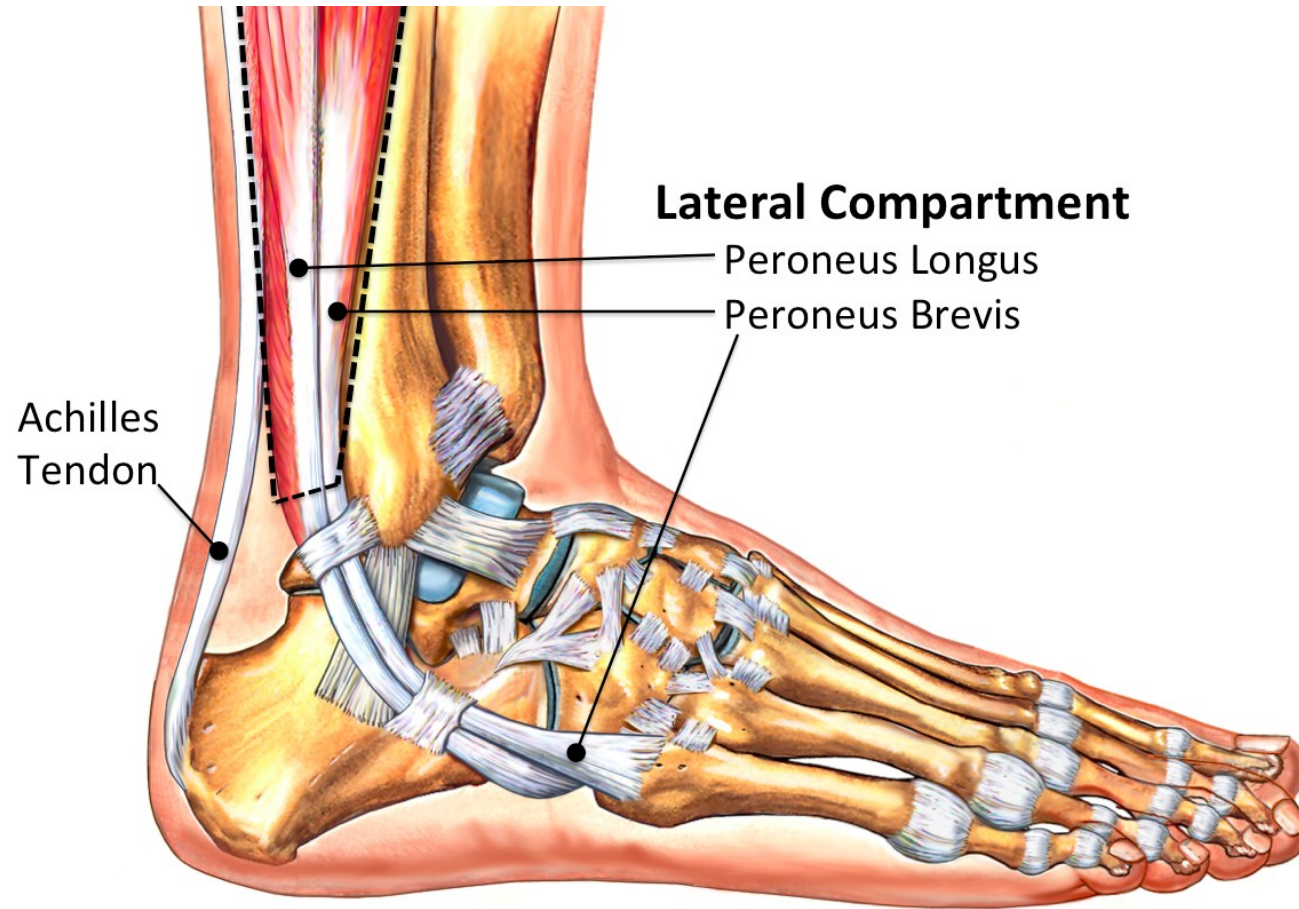
Fossa poplitea



Medial Ankle

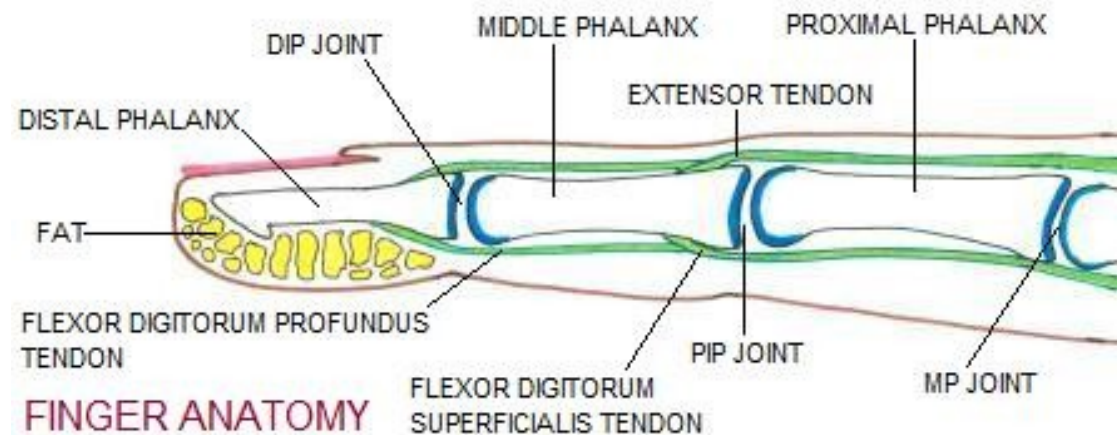


Lateral Ankle

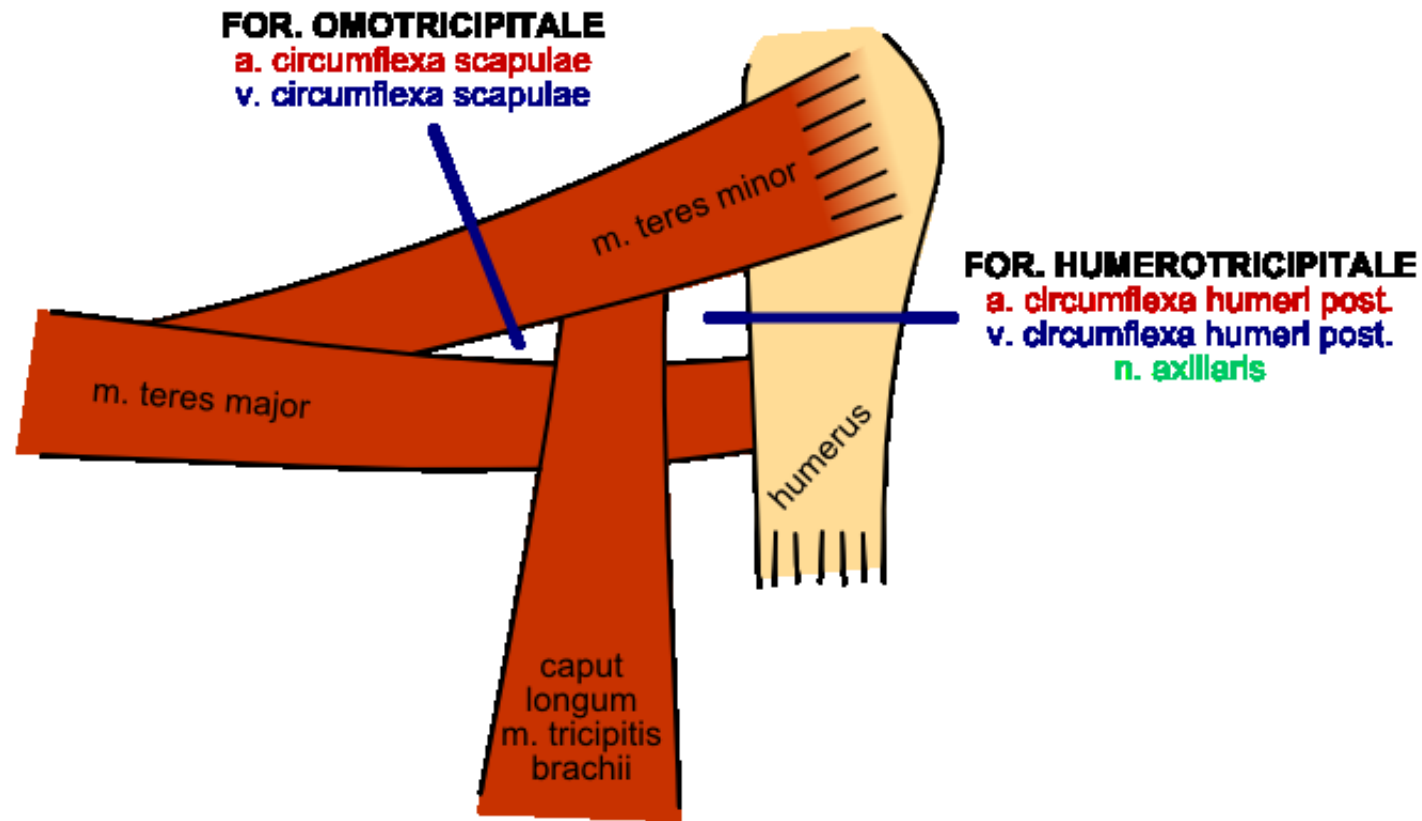


Fingers/Toes

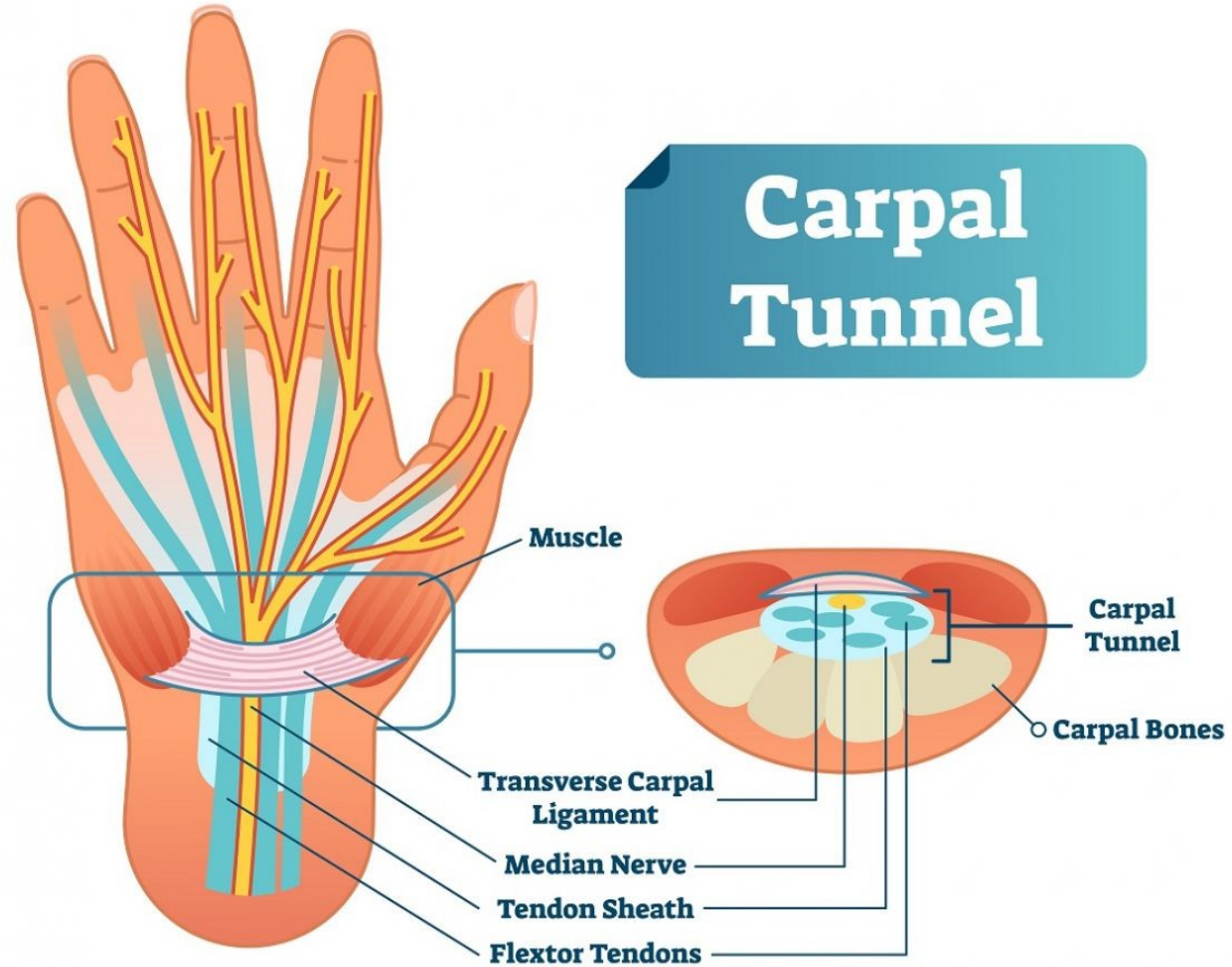
- dorsal side – skin: thin and movable on dorsal side (with hairs and nails), above the joints transverse flexion creases
 - dorsal digital nerves and vessels on the sides
 - the tendons of the extensors below subcutaneous tissue, attached to the dorsal aponeurosis
- palmar side – skin: → thick and not movable on palmar/plantar side (with tactile ridges)
 - subcutaneous fat pads
 - connective tissue attaches the skin to the fibrous sheaths of flexor tendons and to the periosteum
 - lymphatic plexus on ventral side in the subcutaneous tissue
 - proper palmar digital nerves and vessels → subcutaneously on the sides
 - tendons of superficial and deep flexor covered by fibrous and synovial sheaths → separated from common flexor sheath (except 1th finger -> flex.poll.long. thenar space in between the 2 heads of the short flexor with its own synovial sheath)



Foramen omotricipitale and humerotricipitale



Carpal tunnel



Suboccipital triangle

