

# Nervový systém

*Cortex cerebri*

*Cerebellum* (impregnace)

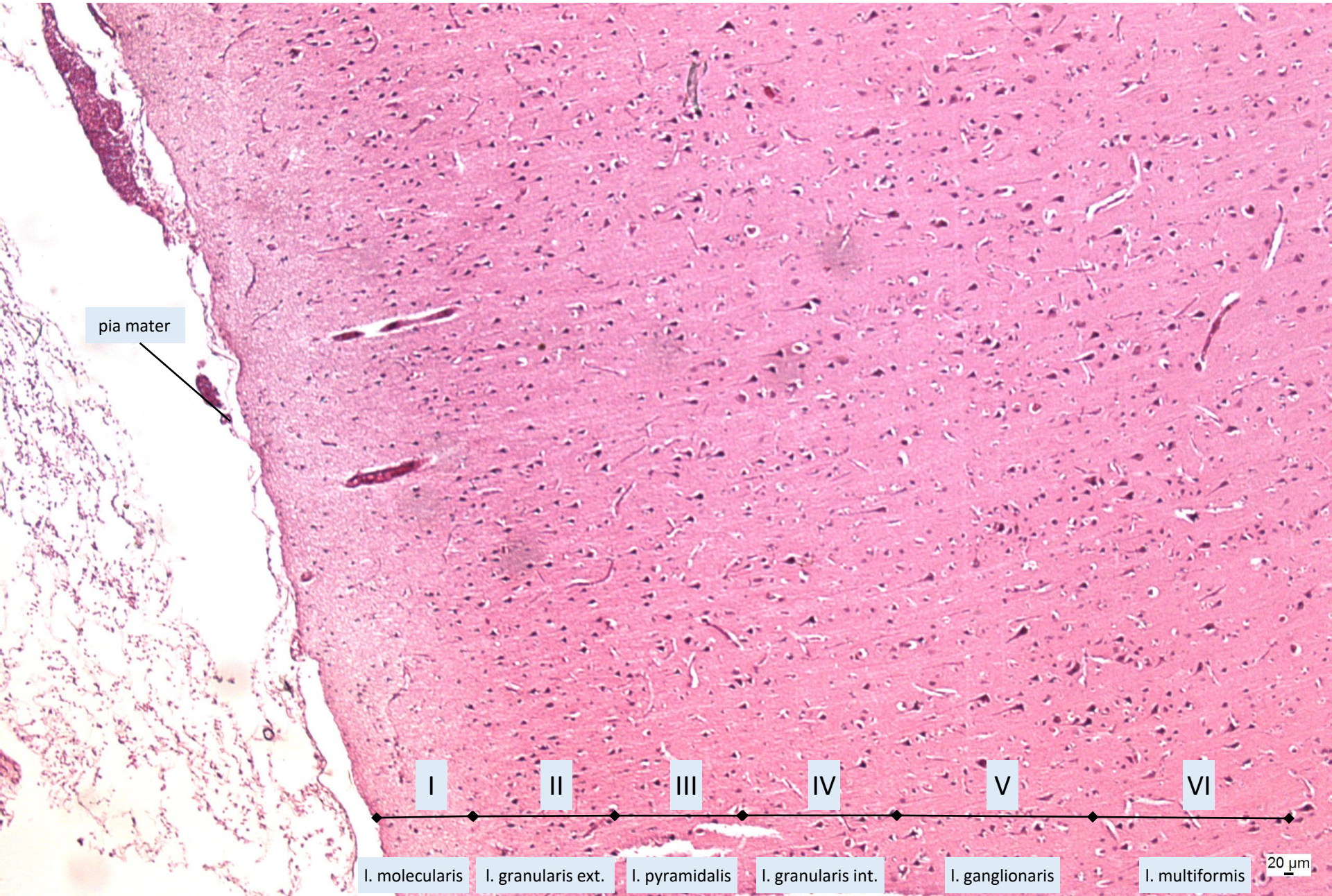
*Medula spinalis*

*Plexus choroideus*

Spinální a autonomní ganglion

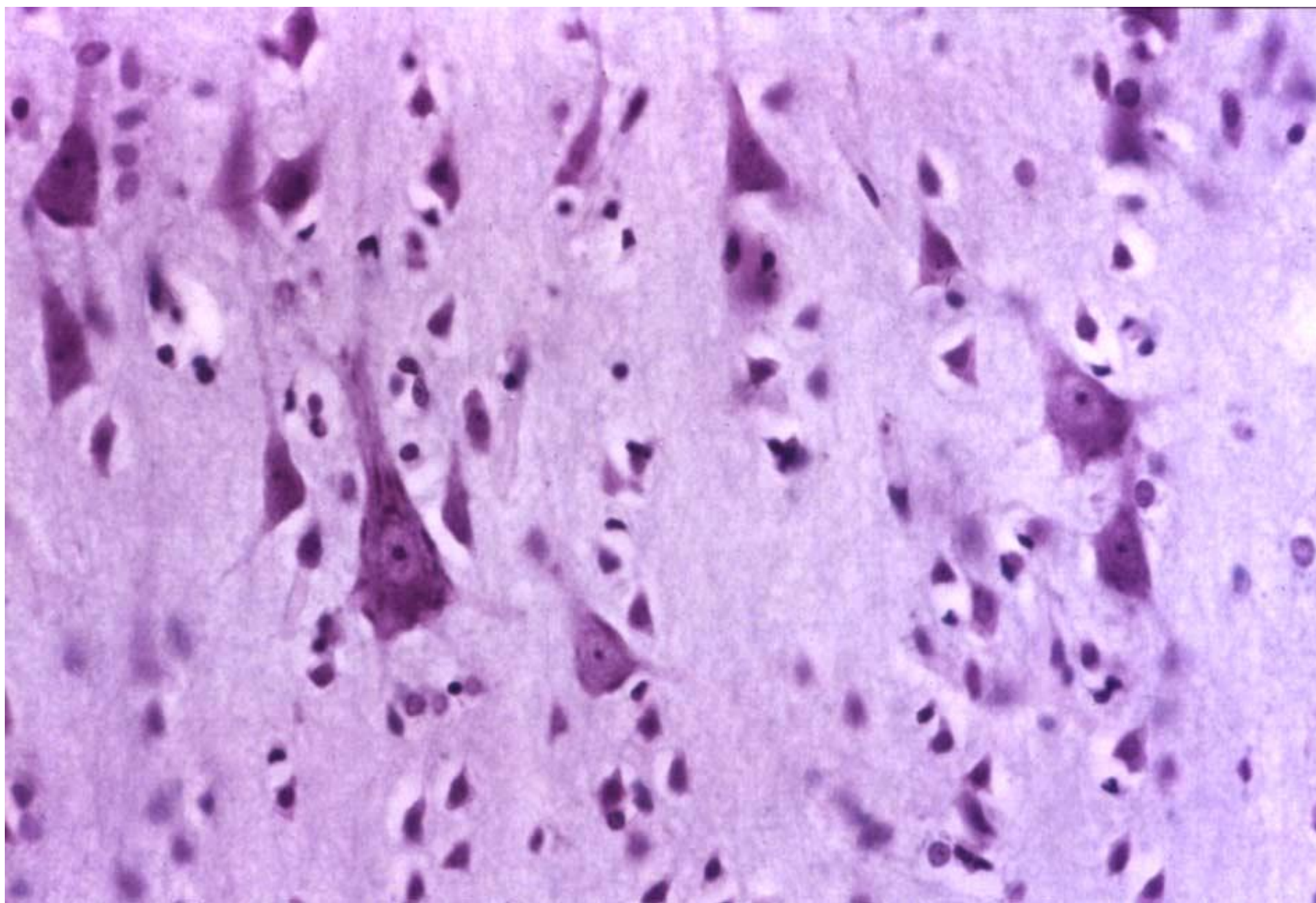
Periferní nerv

# *Cortex cerebri*



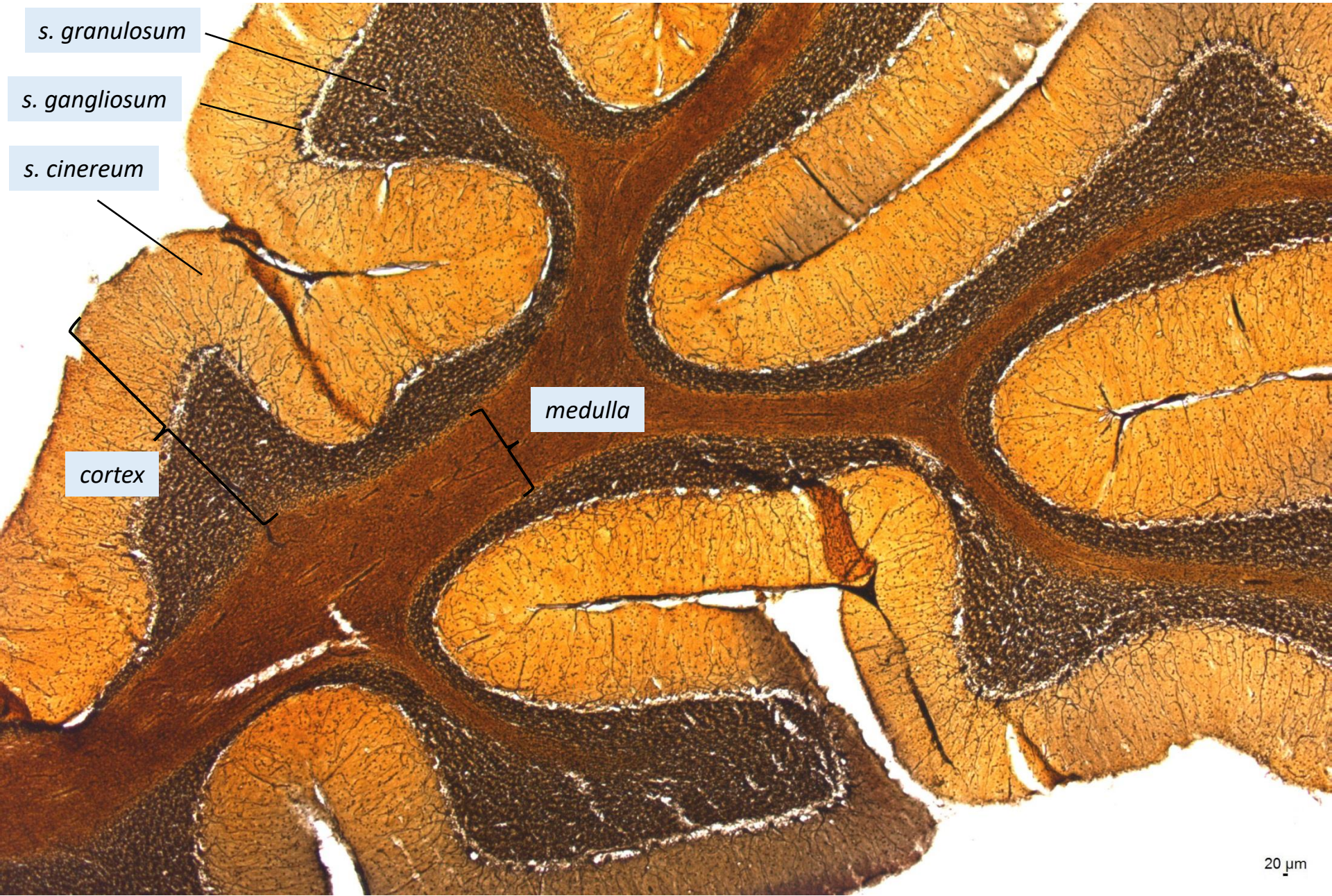


*Lamina ganglionaris (pyramidalis interna) – velké pyramidové neurony*



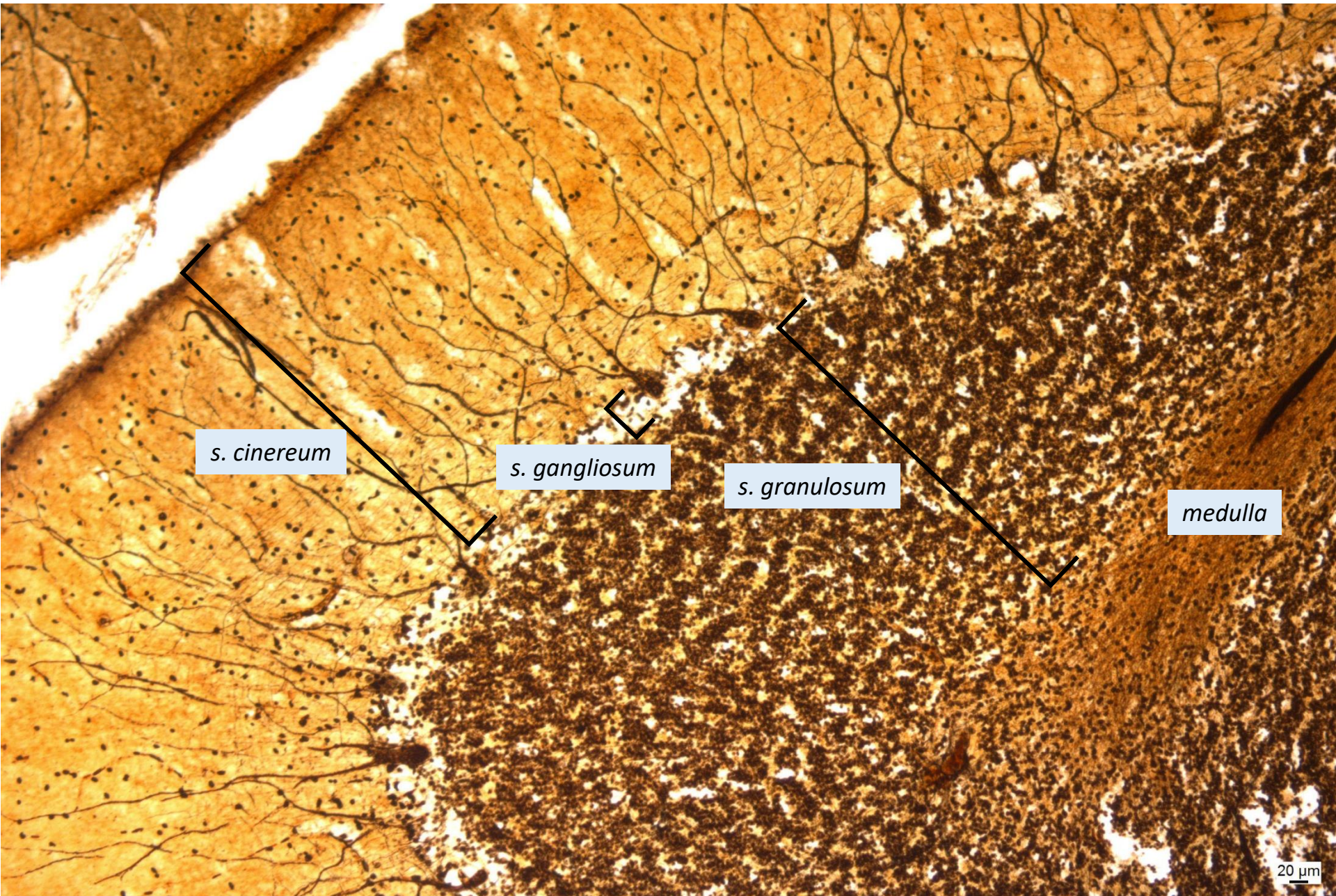


# Cerebellum





# *Cortex cerebelli*



*s. cinereum*

*s. gangliosum*

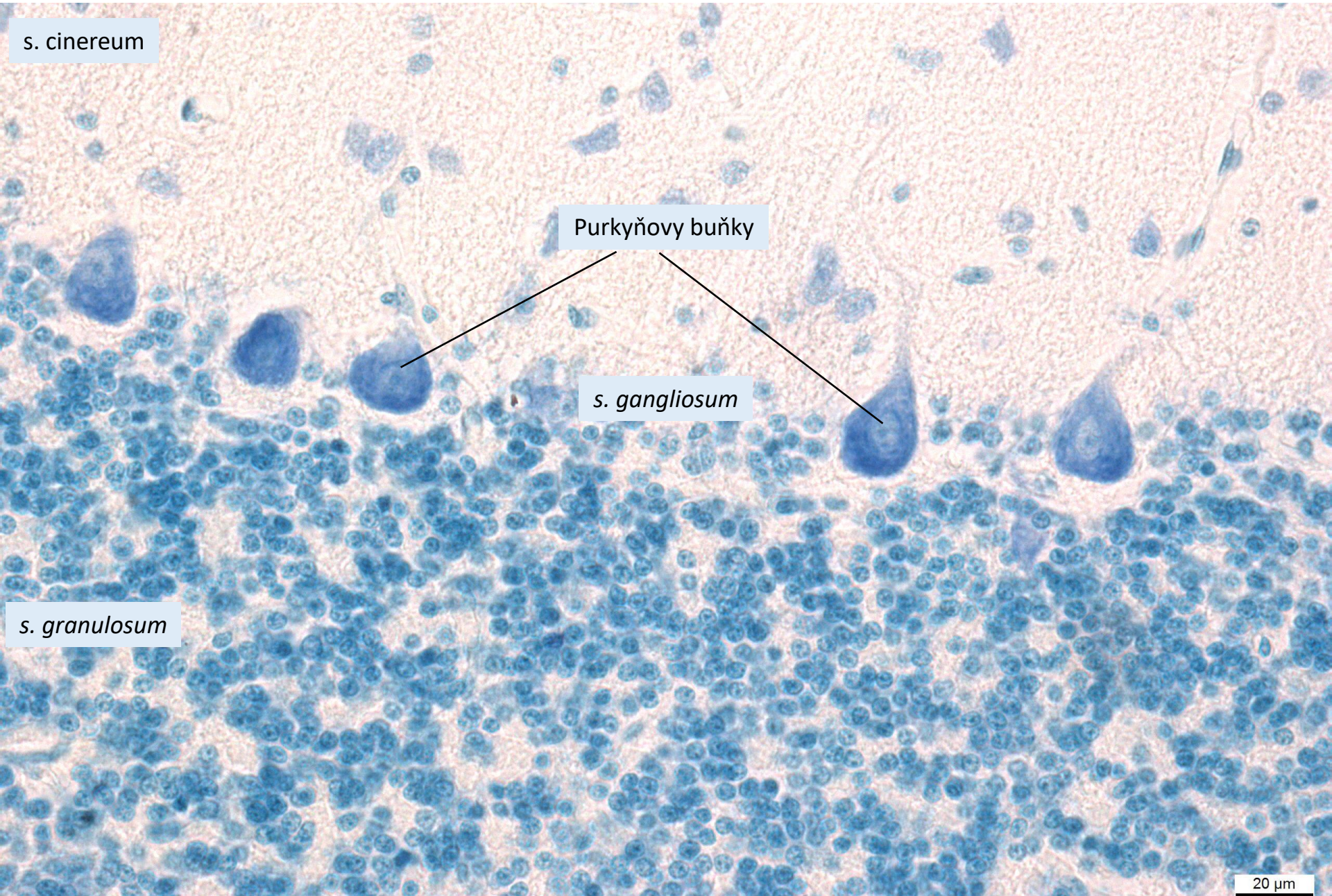
*s. granulosum*

*medulla*

20 μm



# *Cortex cerebelli* – Nisslovo barvení - Purkyňovy buňky



*s. cinereum*

Purkyňovy buňky

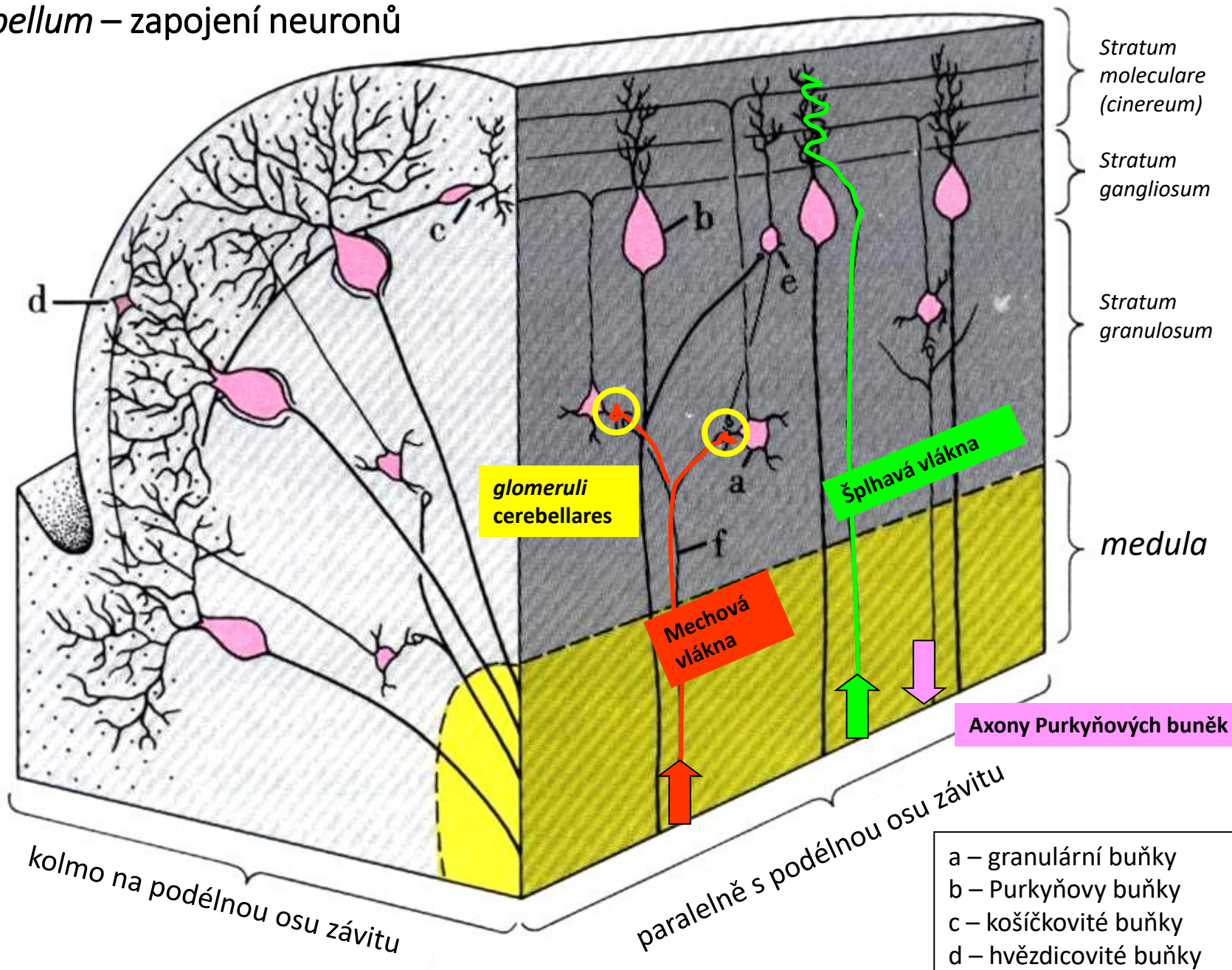
*s. gangliosum*

*s. granulosum*

20 μm

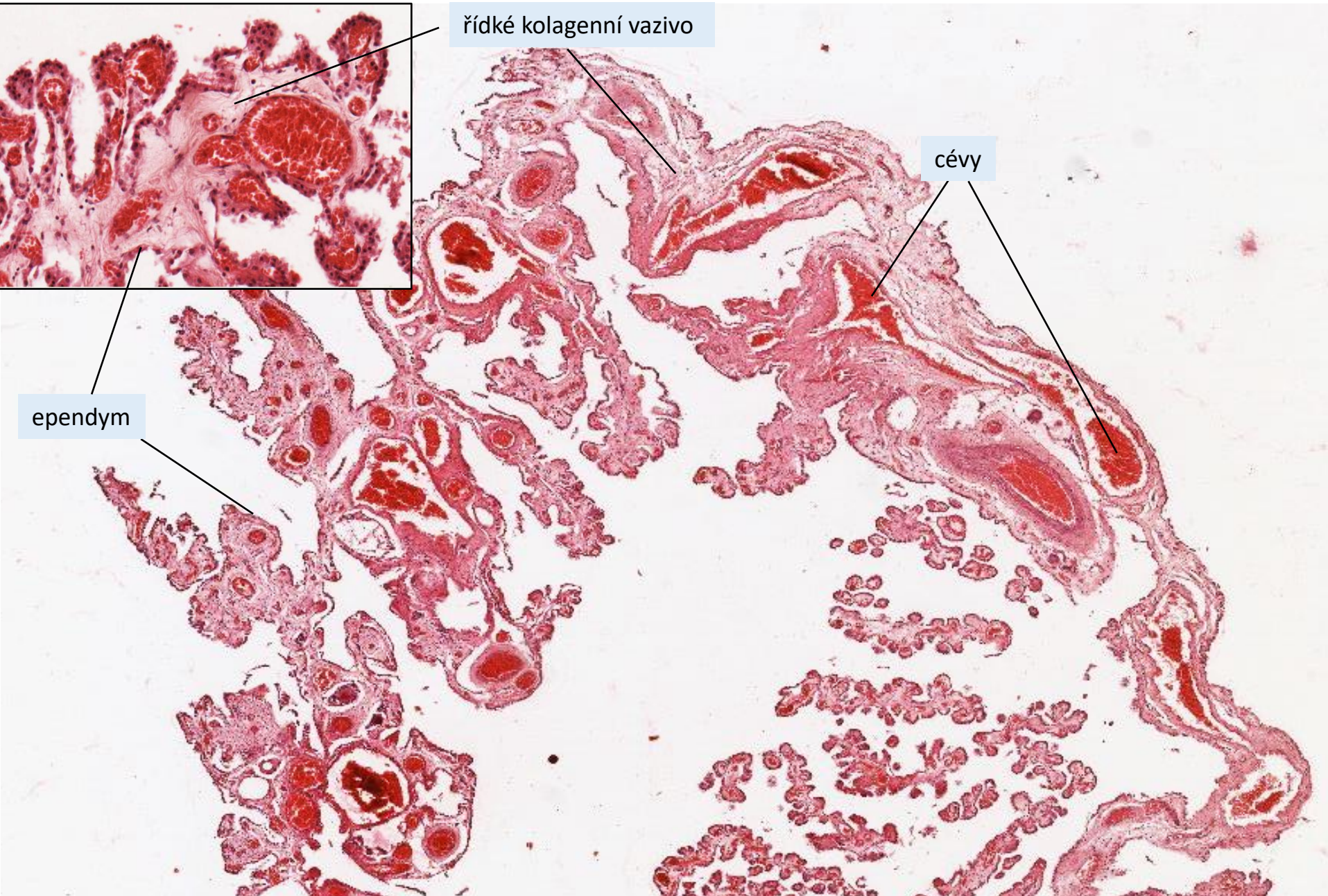


# Cerebellum – zapojení neuronů



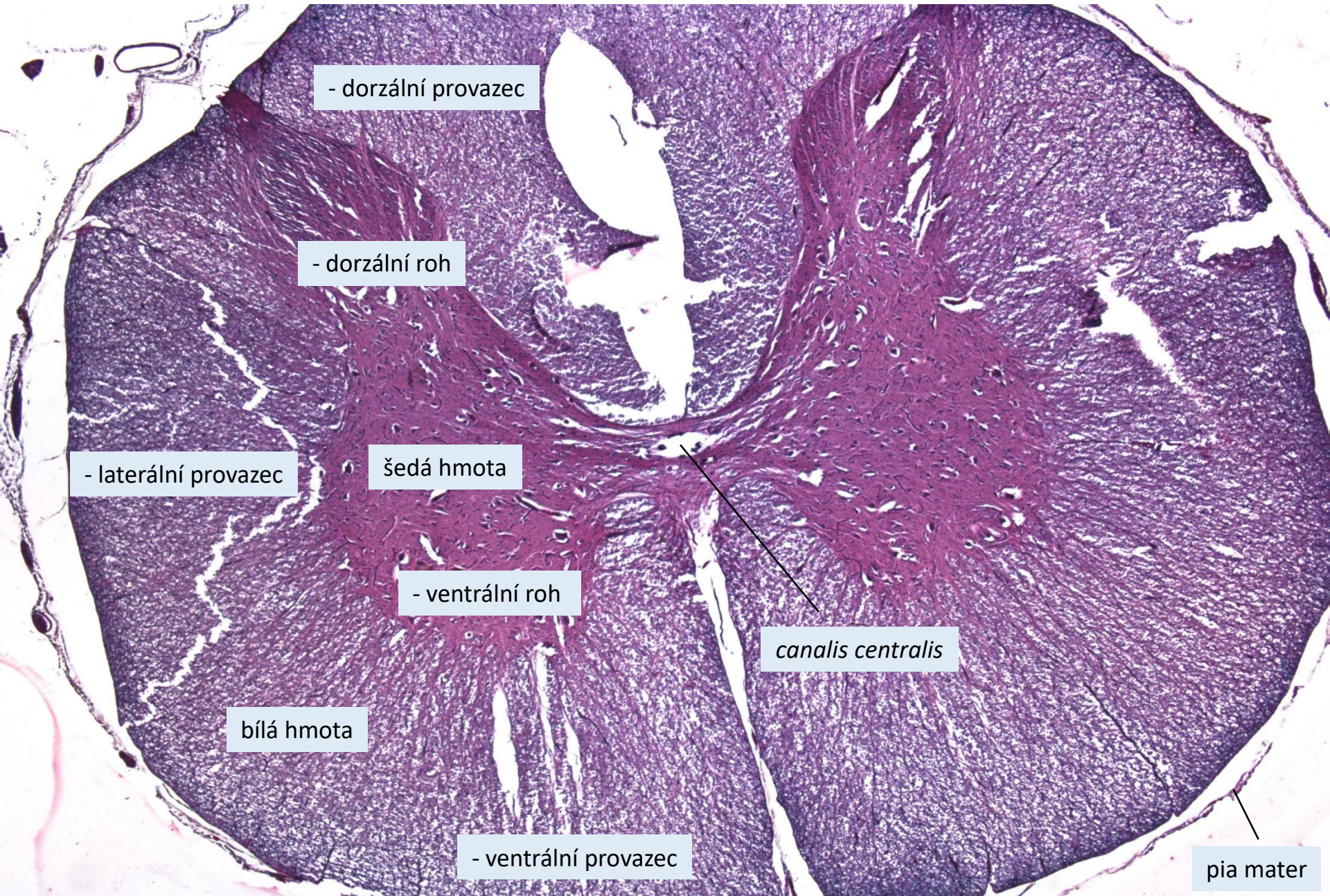


# Choroidní plexus

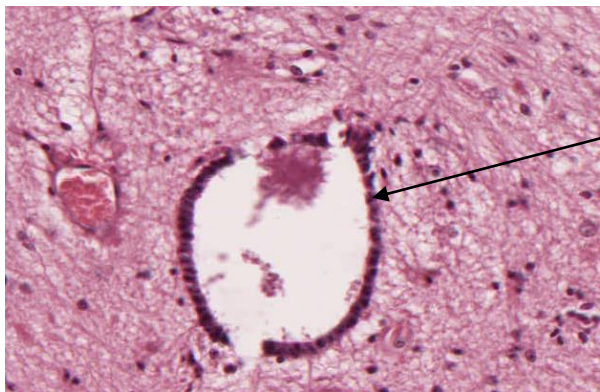




# Mícha





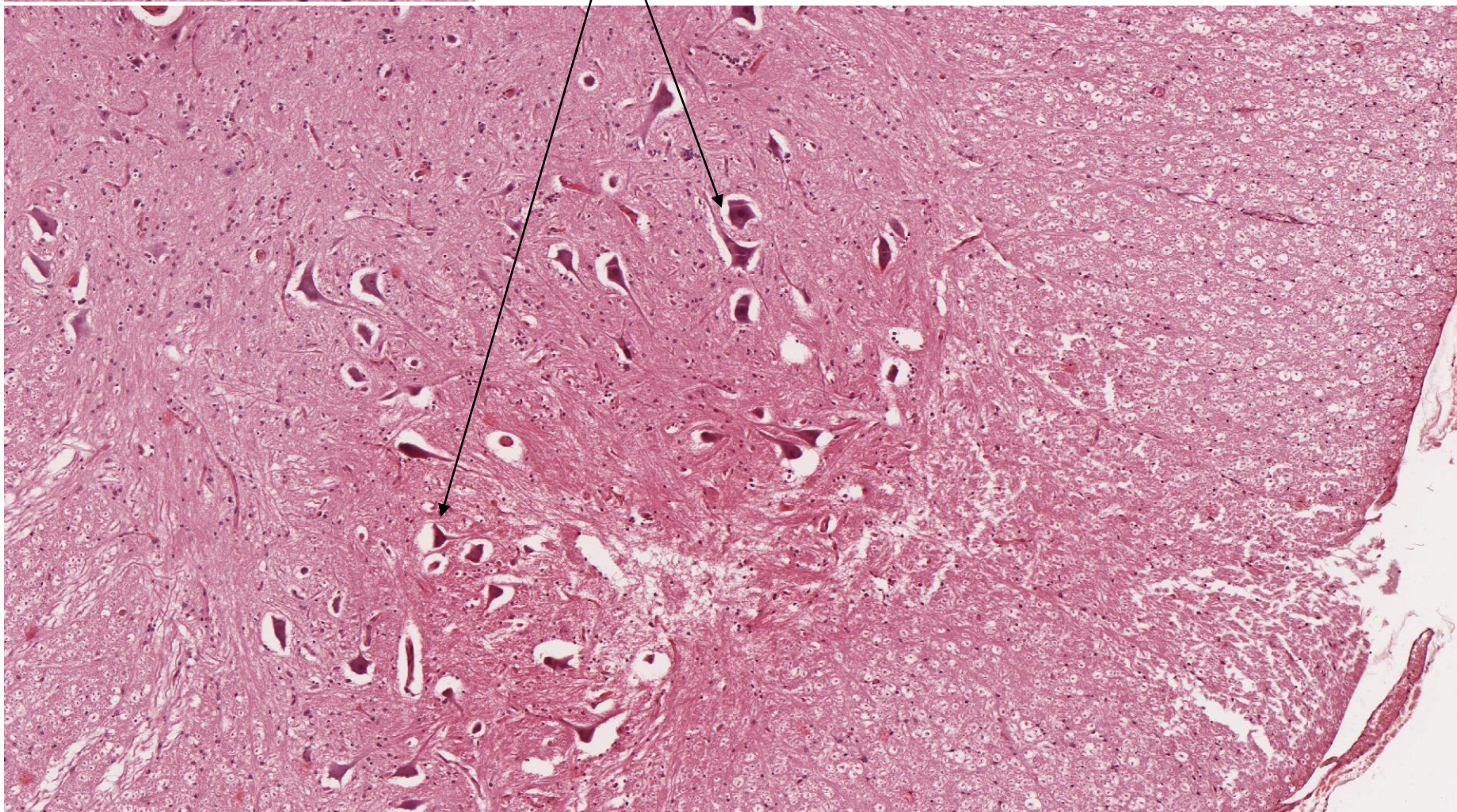


ependym

Mícha

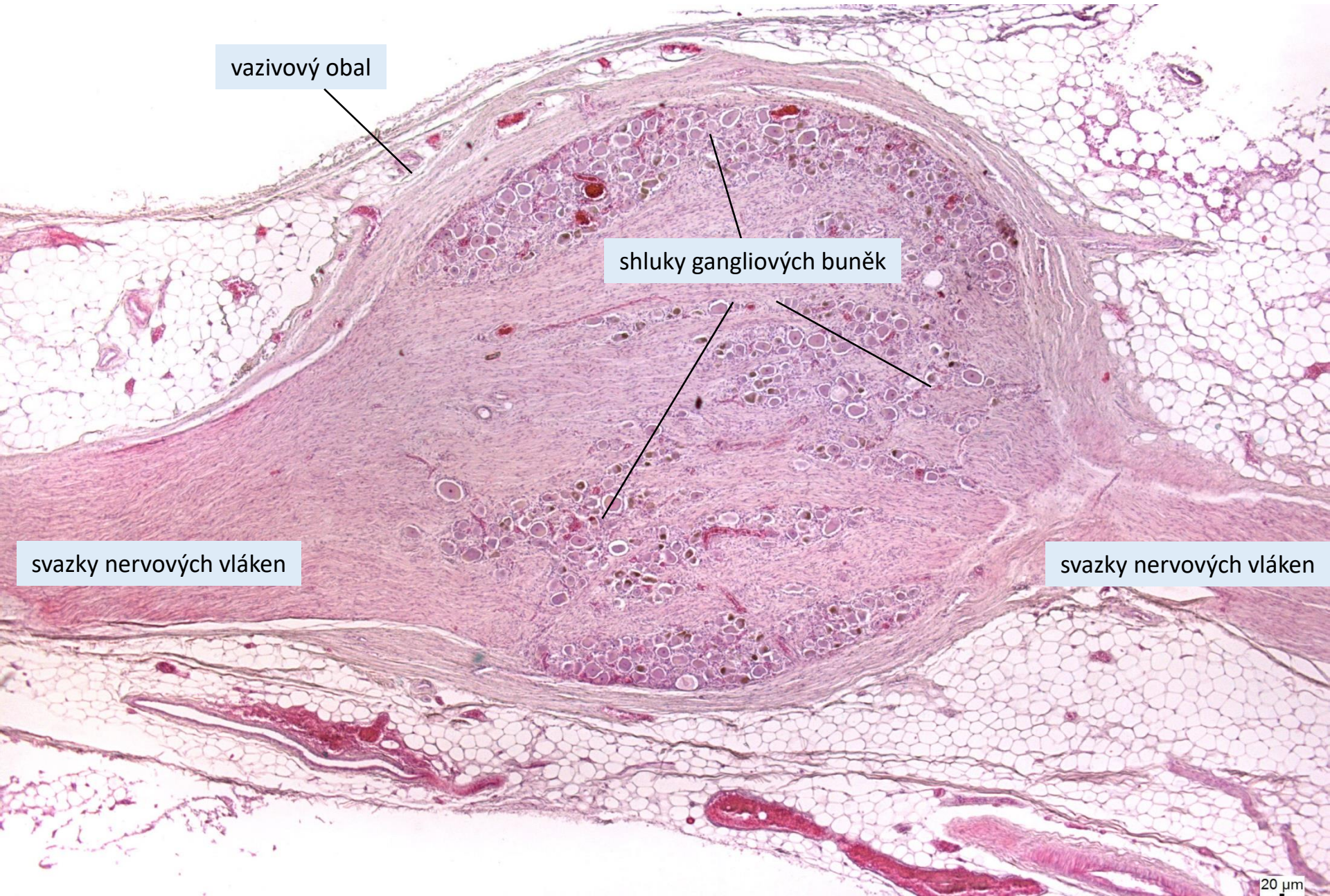
motorické neurony

bílá hmota





# Spinální ganglion



vazivový obal

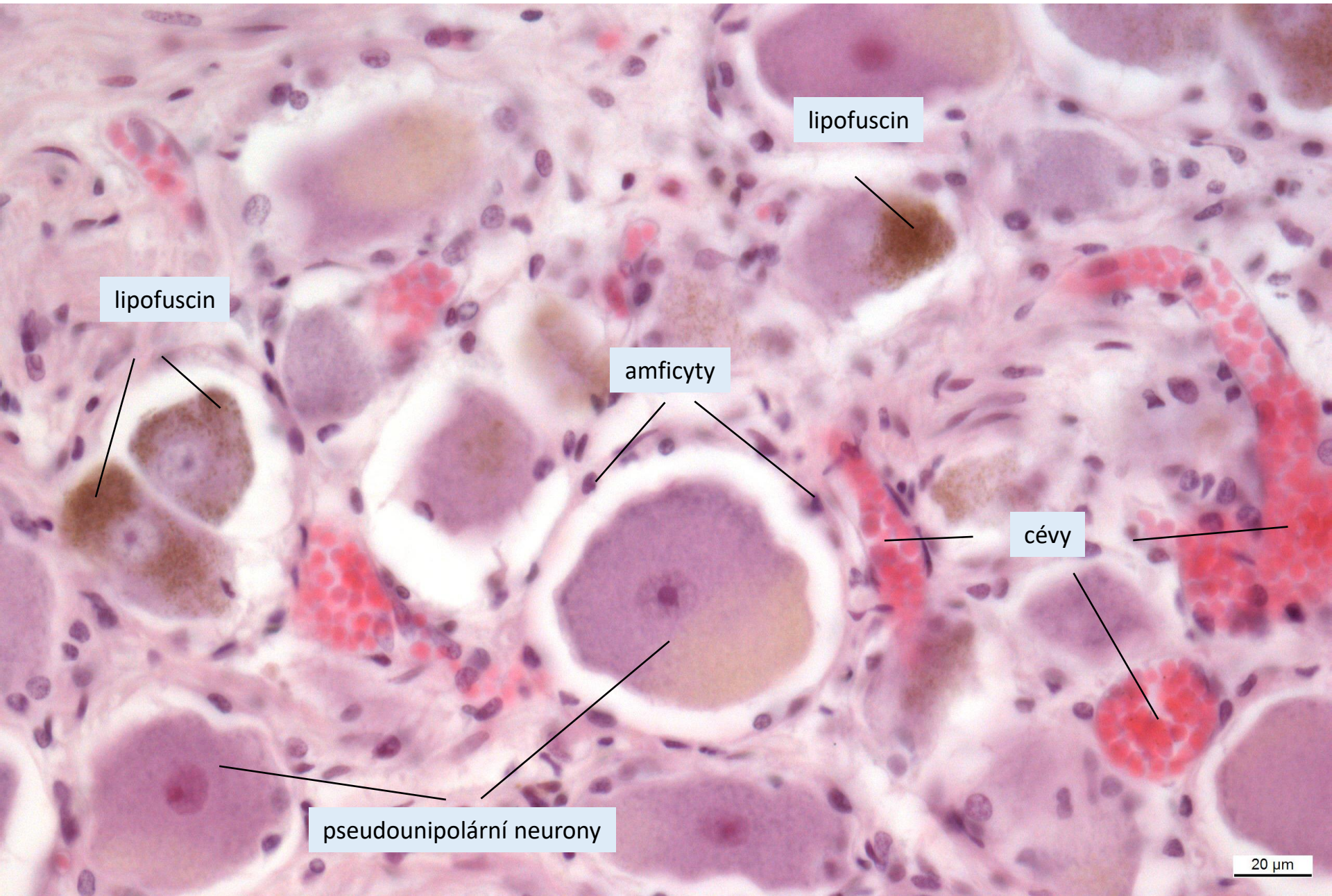
shluky gangliových buněk

svazky nervových vláken

svazky nervových vláken



# Spinální ganglion



lipofuscin

lipofuscin

amficyty

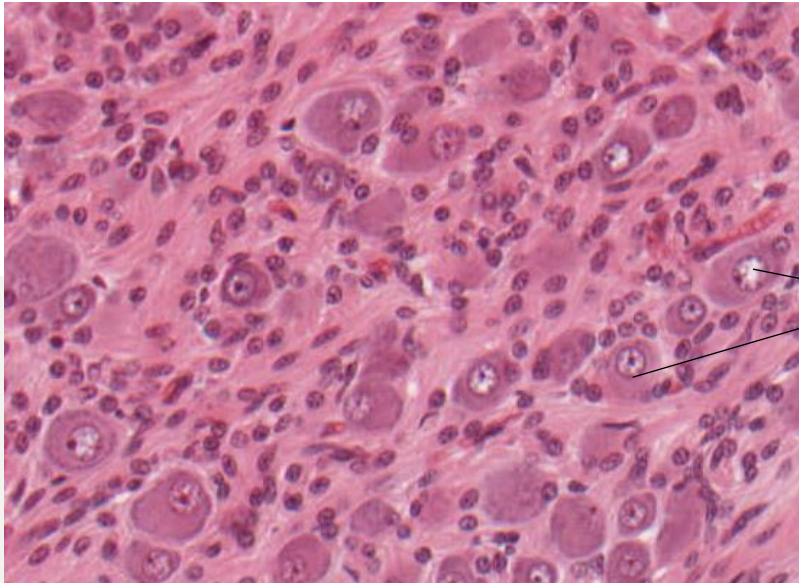
cévy

pseudounipolární neurony

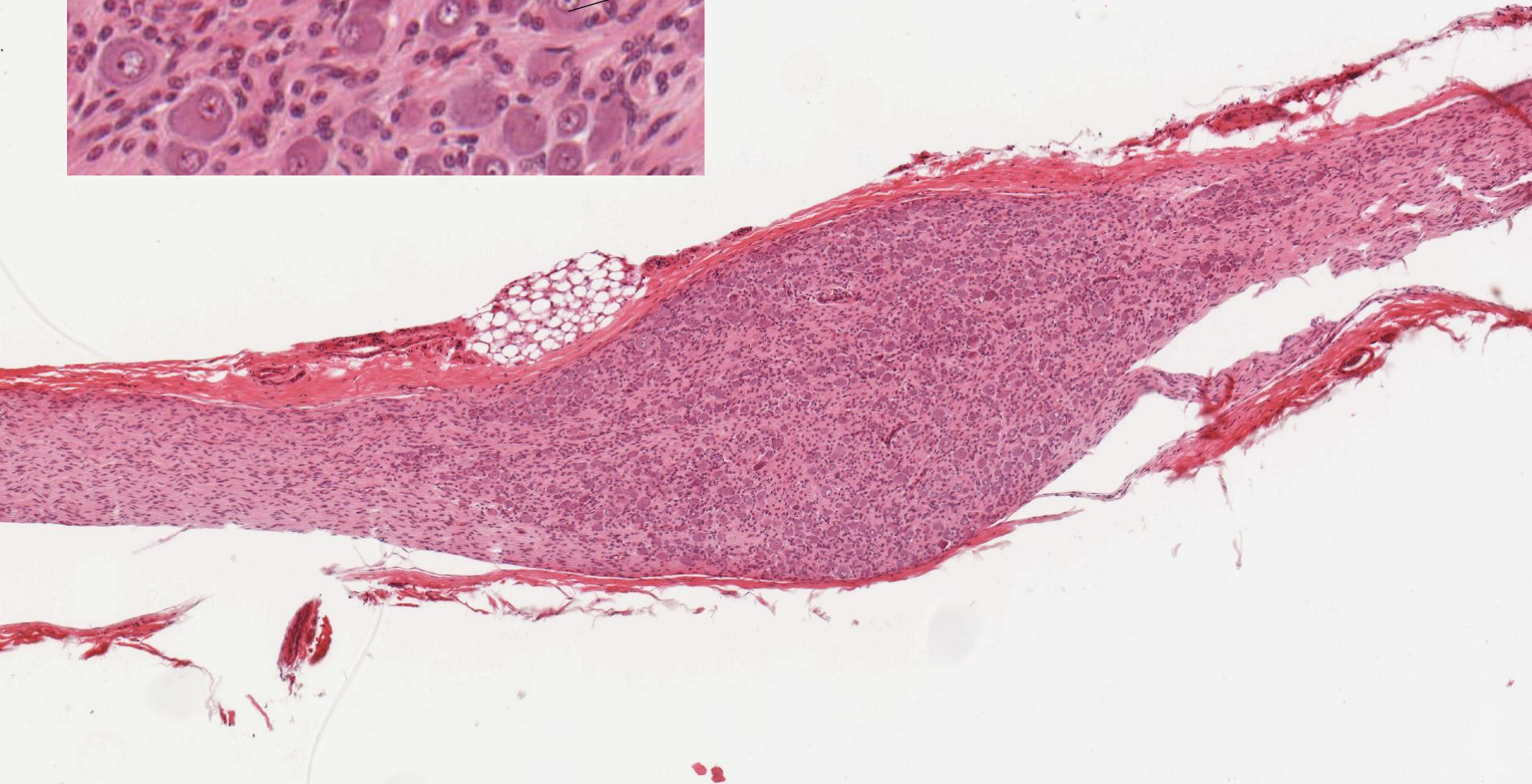
20  $\mu$ m



# Autonomní ganglion

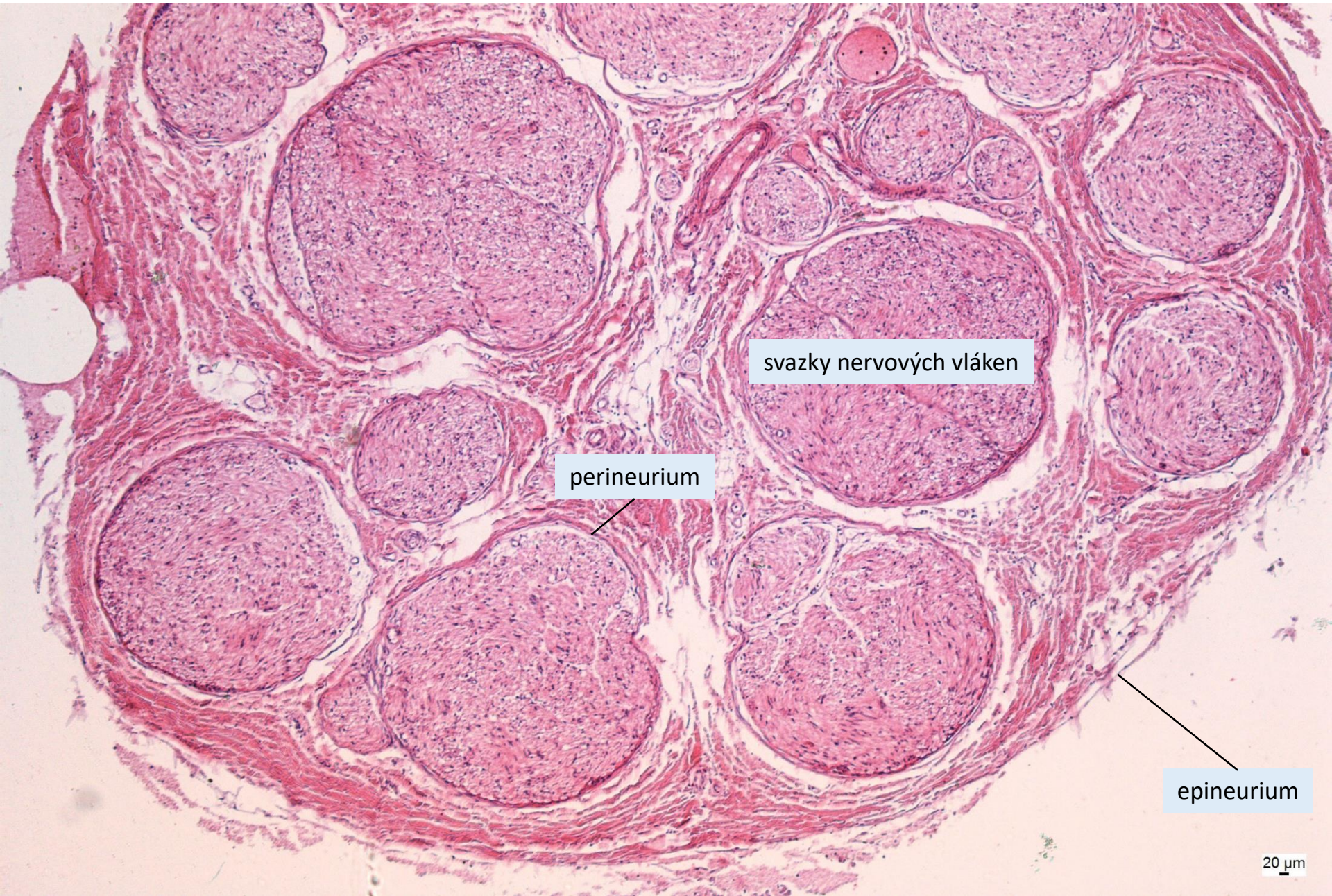


gangliové buňky – multipolární neurony





# Periferní nerv



svazky nervových vláken

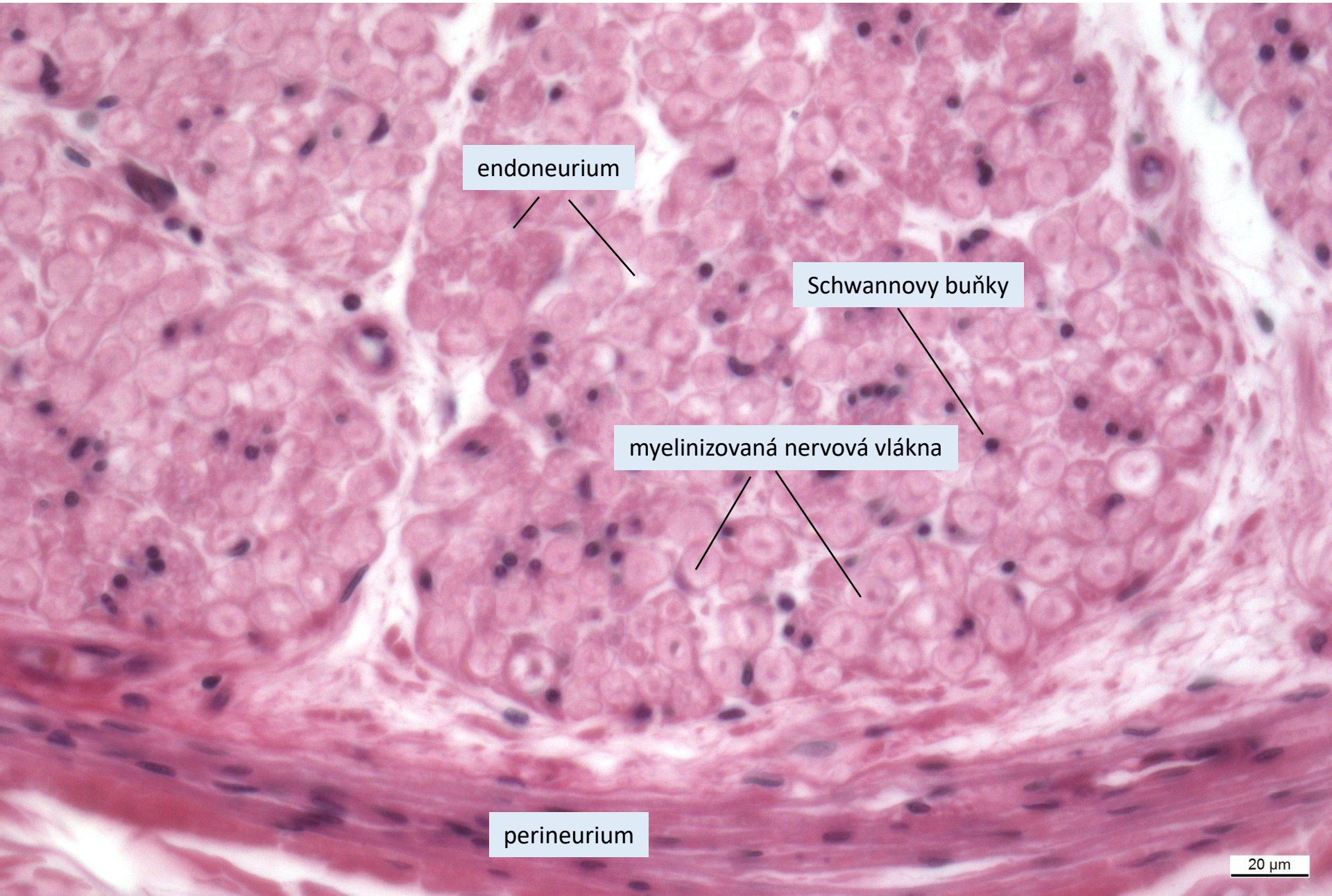
perineurium

epineurium

20  $\mu$ m



# Periferní nerv



endoneurium

Schwannovy buňky

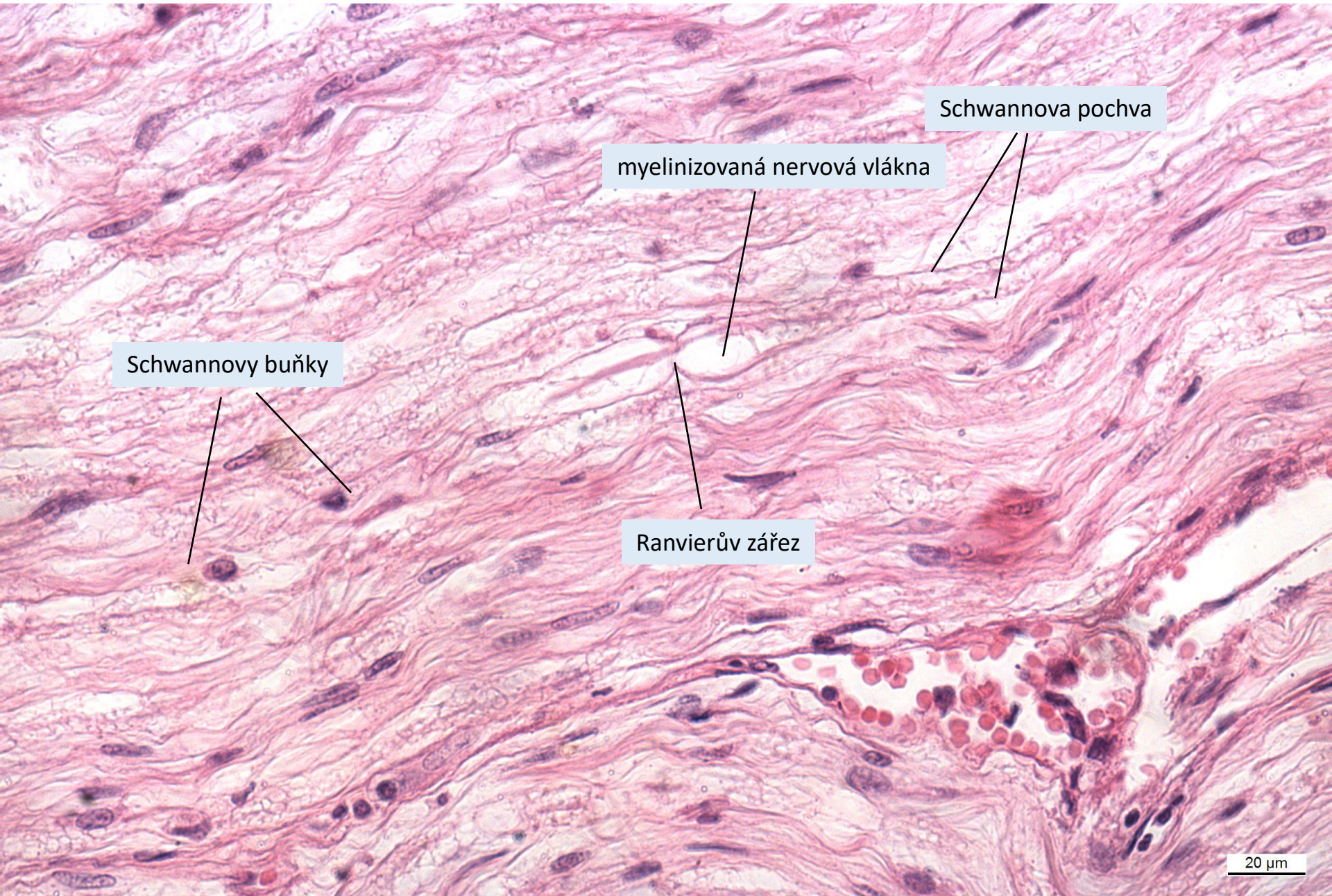
myelinizovaná nervová vlákna

perineurium

20  $\mu$ m



# Periferní nerv



Schwannovy buňky

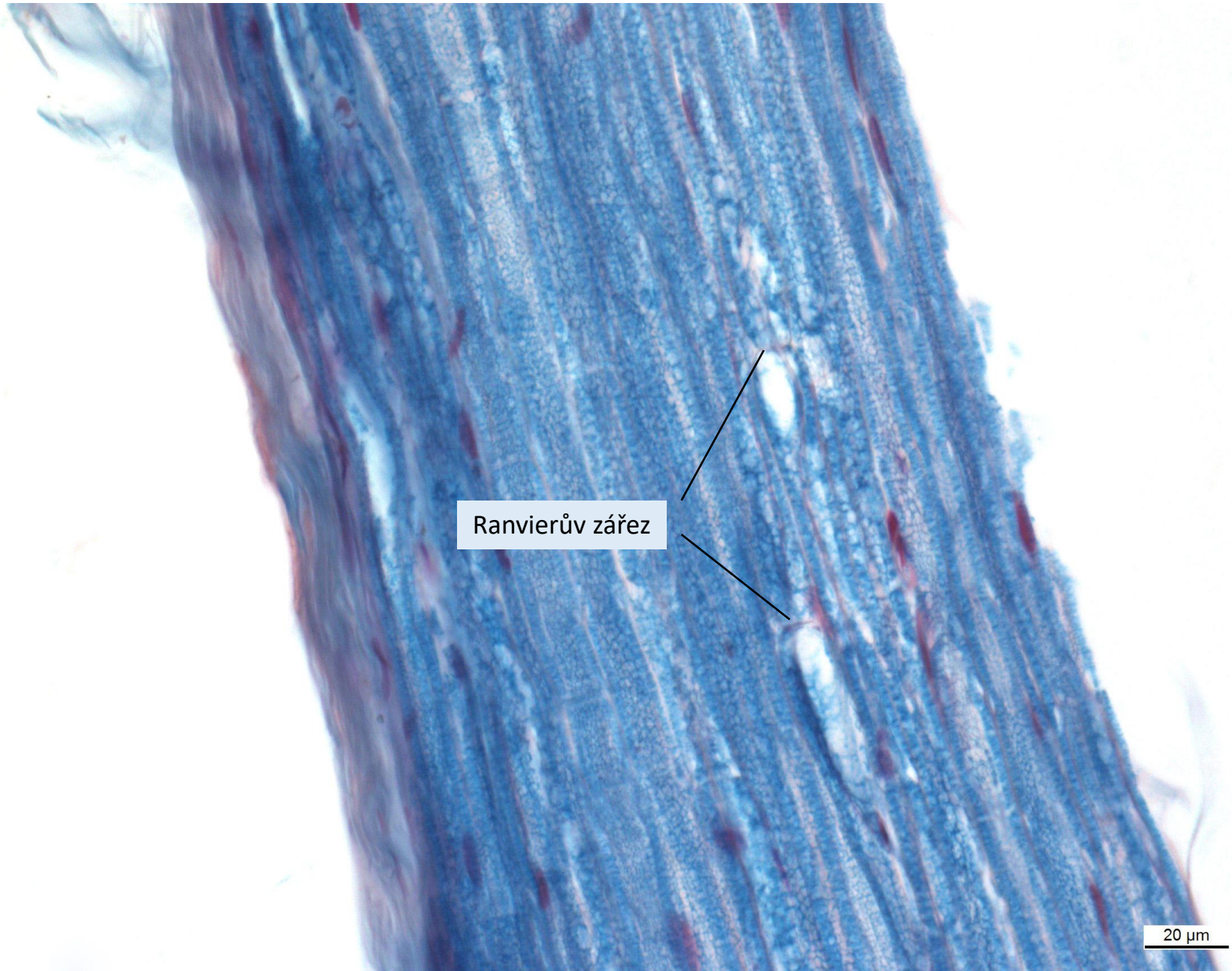
myelinizovaná nervová vlákna

Schwannova pochva

Ranvierův zářez



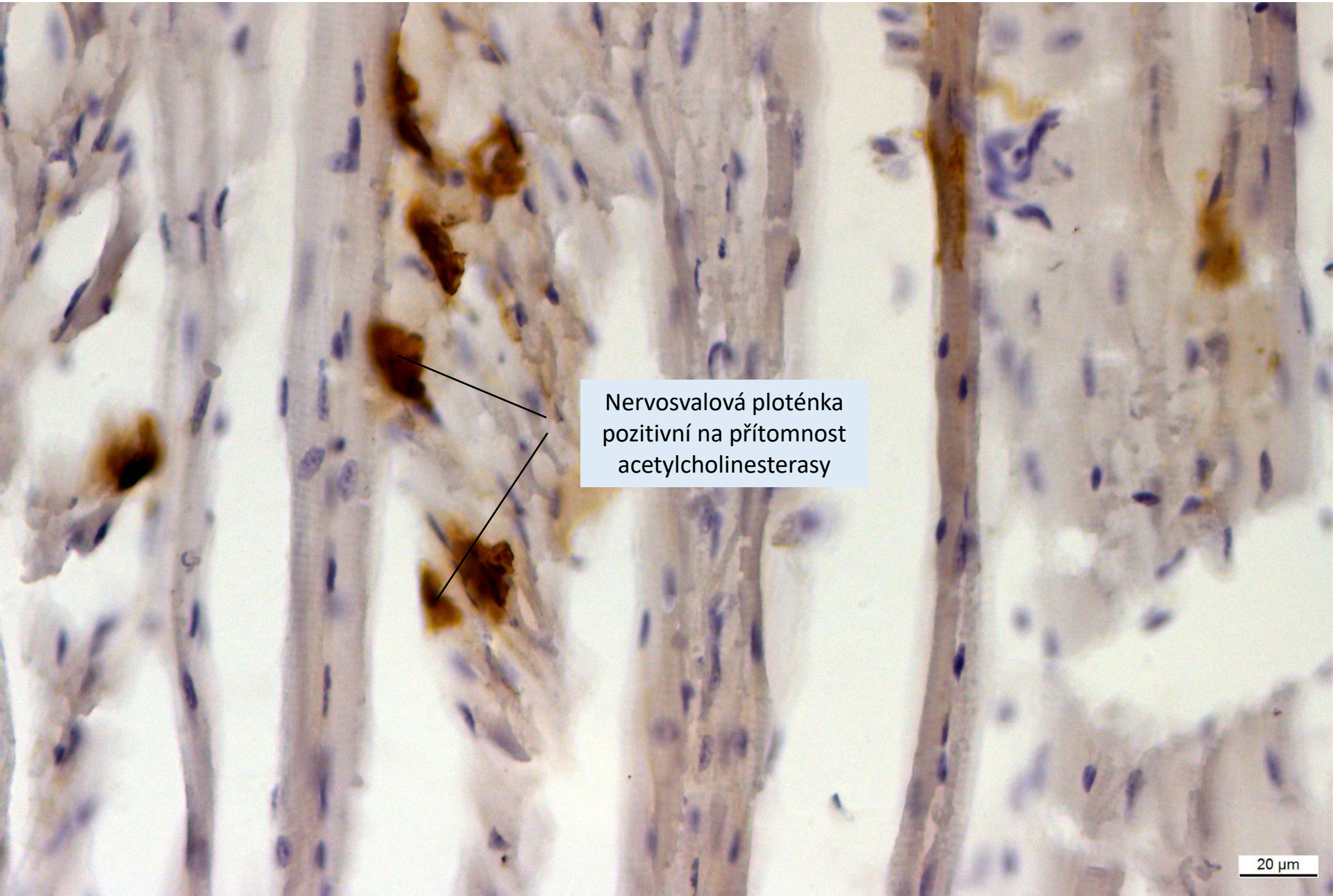
# Periferní nerv



Ranvierův zářez



# Nervosvalová ploténka



Nervosvalová ploténka  
pozitivní na přítomnost  
acetylcholinesterasy

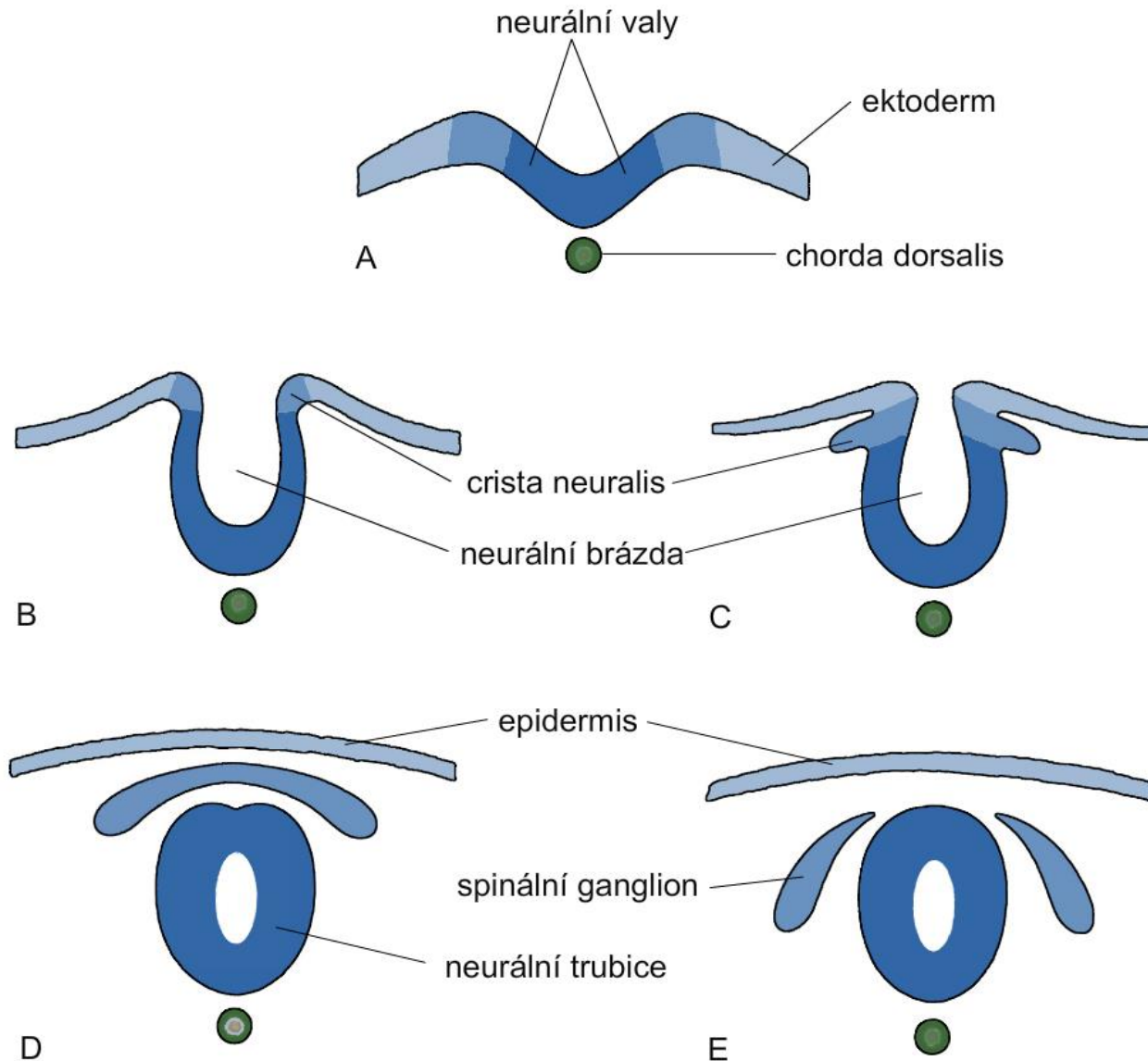


# Seznam preparátů

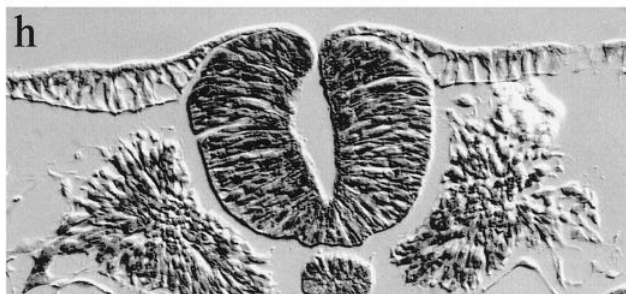
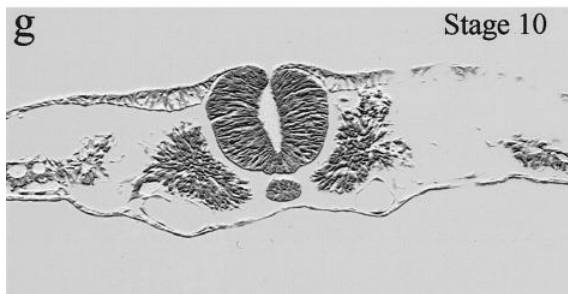
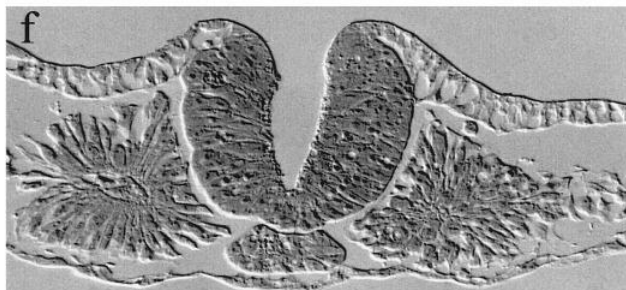
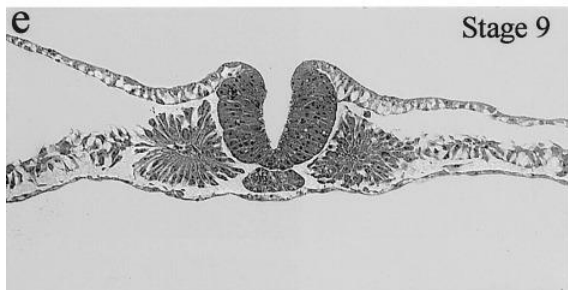
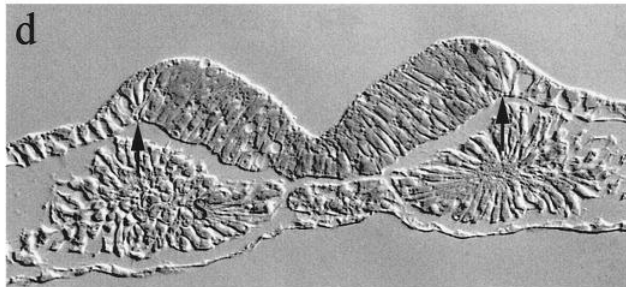
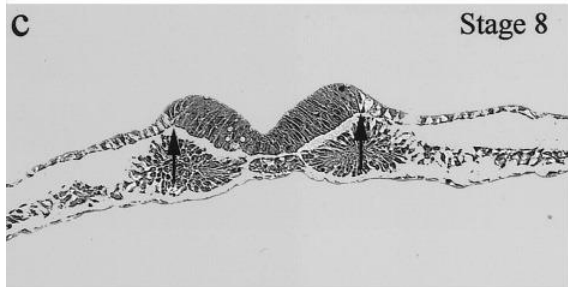
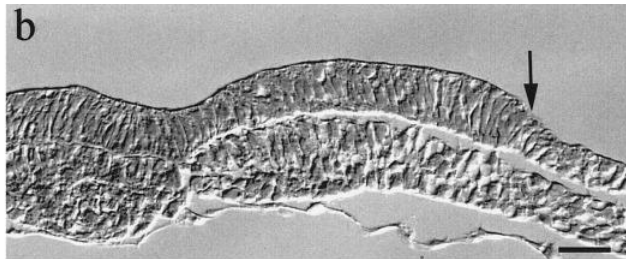
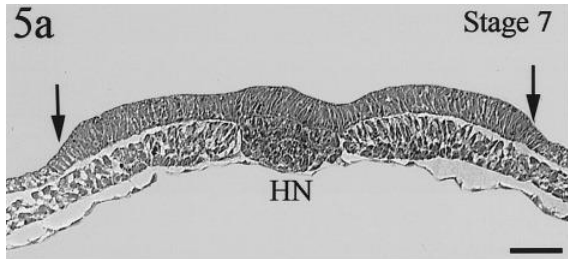
- **75.** *Cortex cerebri*
- 76. *Cortex cerebri* (impregnace)
- **77.** *Cerebellum* (impregnace)
- 78. *Cerebellum* (Nisslova substance)
- **79.** *Medulla spinalis*
- 80. *Plexus choroideus*
- **81.** *Ganglion spinale*
- 82. *Ganglion spinale* (impregnace)
- **83.** Autonomní ganglion
- **84.** Periferní nerv – příčný řez
- 85. Periferní nerv – příčný řez (myelin)
- **86.** Periferní nerv – podélný řez
- 87. Periferní nerv – podélný řez (myelin)



# Vývoj nervové trubice

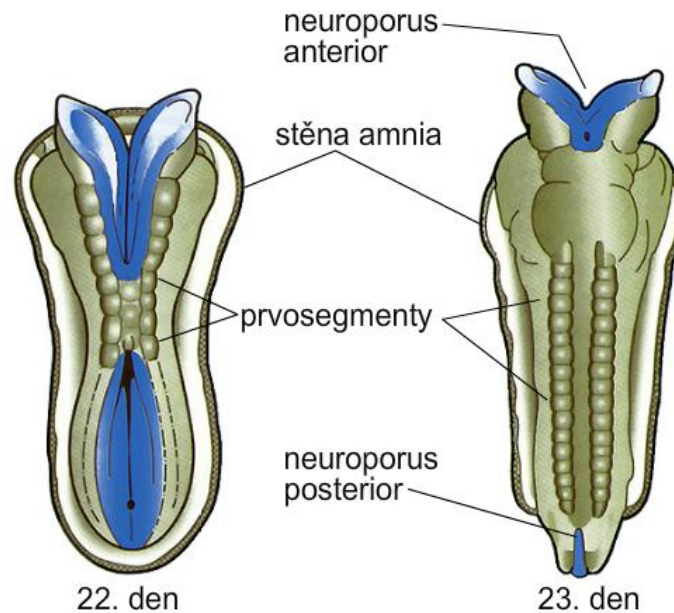
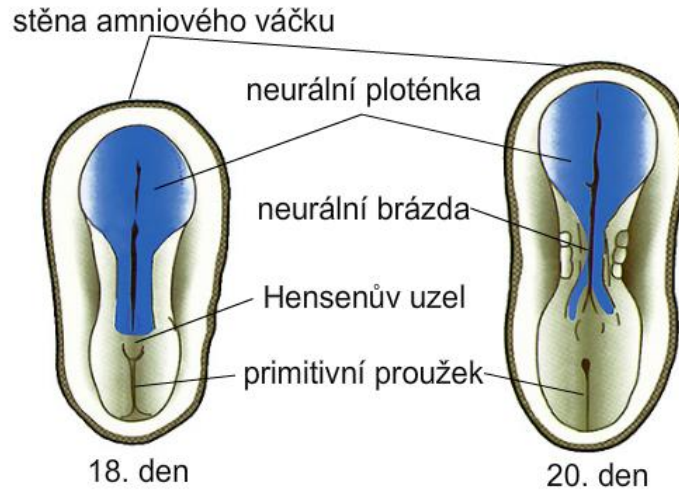






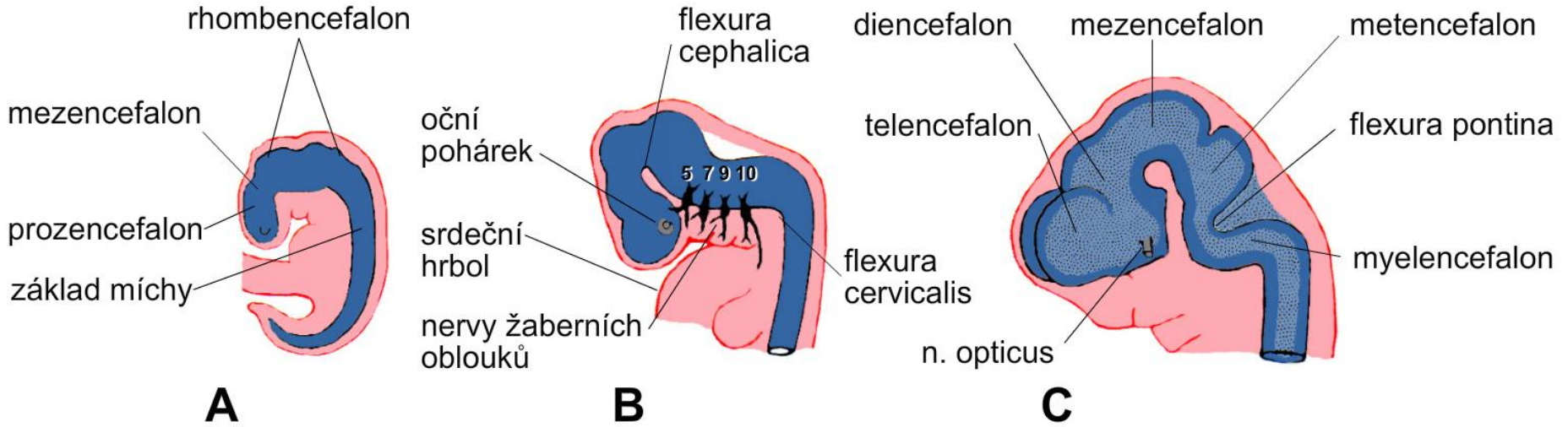


# Uzavírání nervové trubice



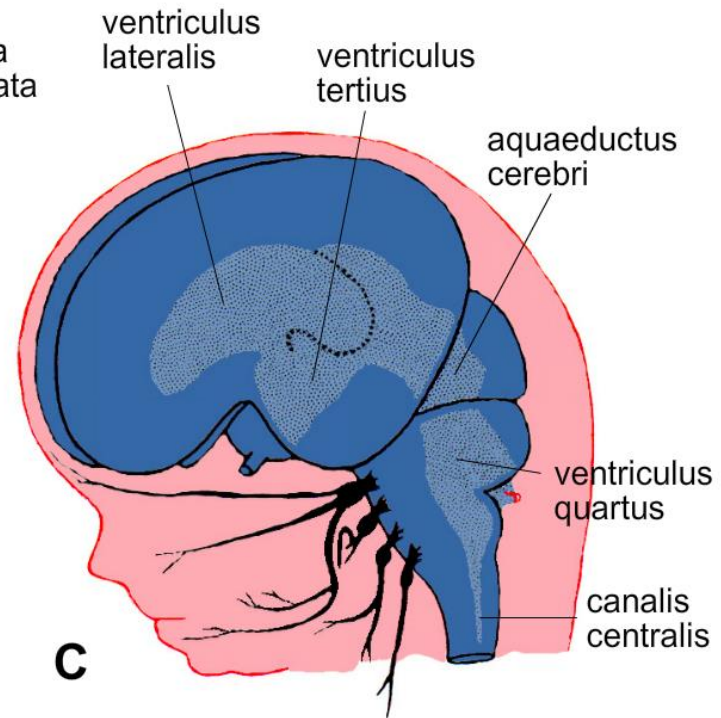
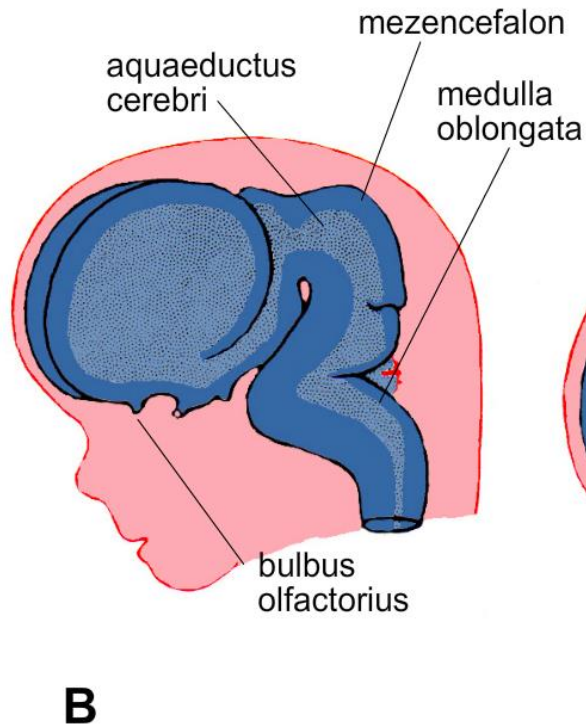
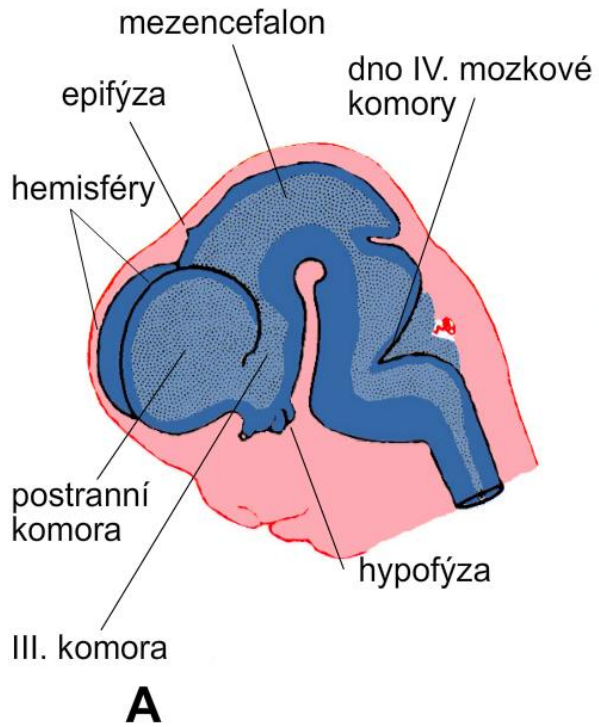


# Vývoj mozku



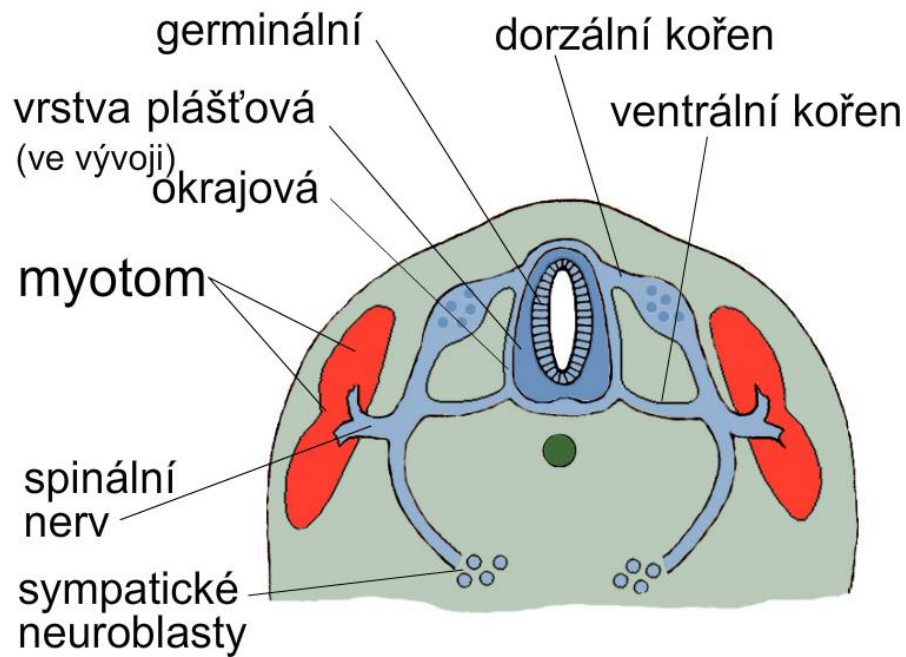


# Vývoj mozku

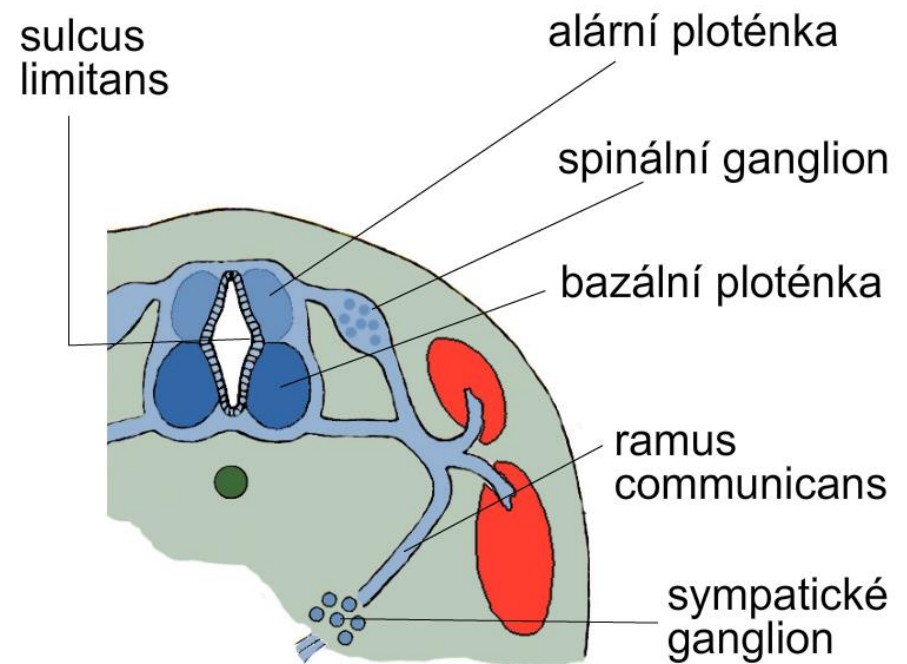




# Vývoj míchy



**A**



**B**