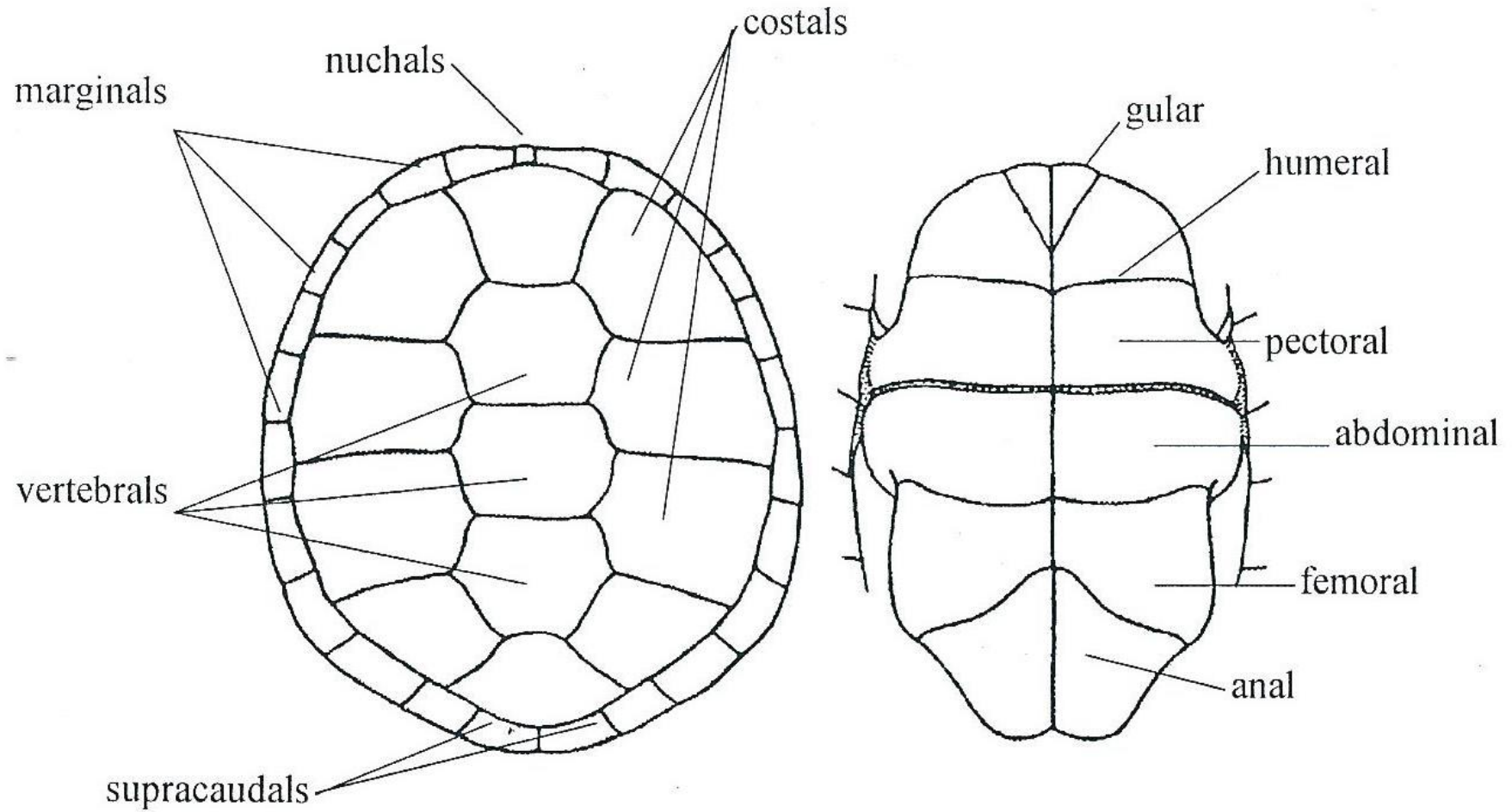


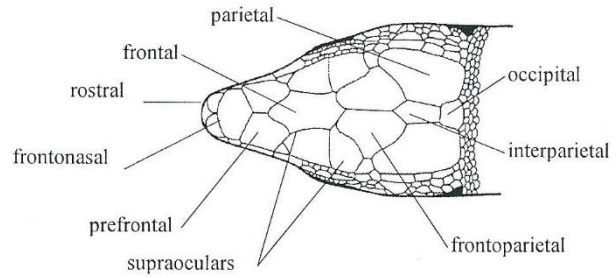
Rohovinné štítky na krunýři želv



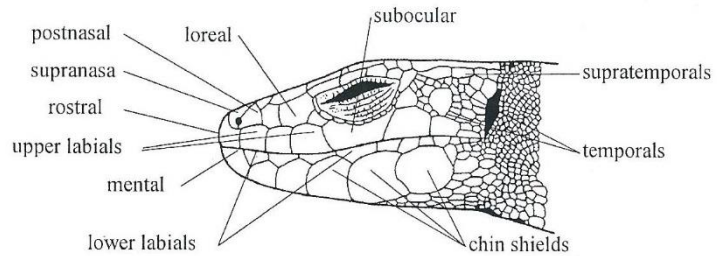
Folidóza (pileus) hlavy ještěrek

Terminology of the lizard's head shields

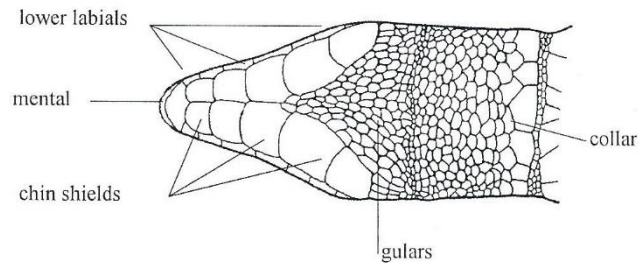
a) dorsal view



b) lateral view



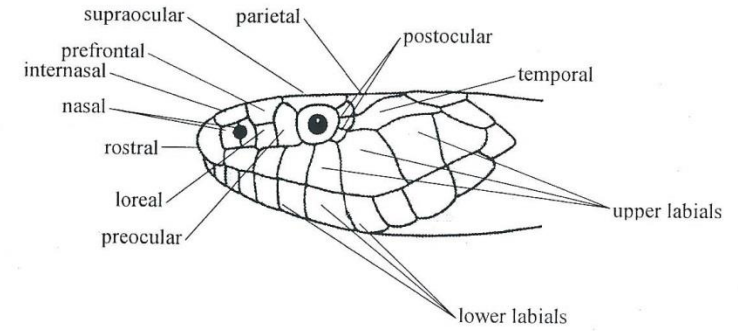
c) ventral view



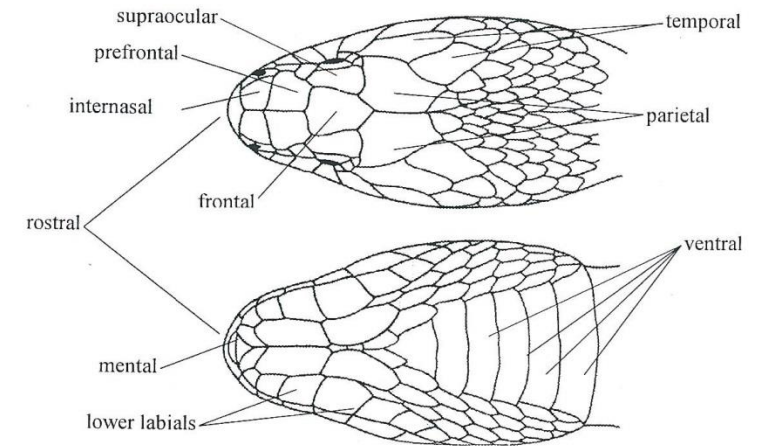
Folidóza (pileus) hadů

Terminology and counts of the snake's head and body scales

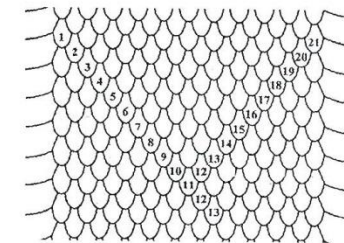
a) lateral view

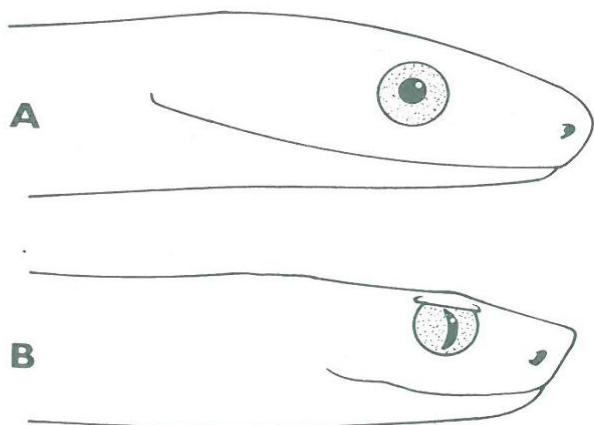


b) dorsal and ventral view

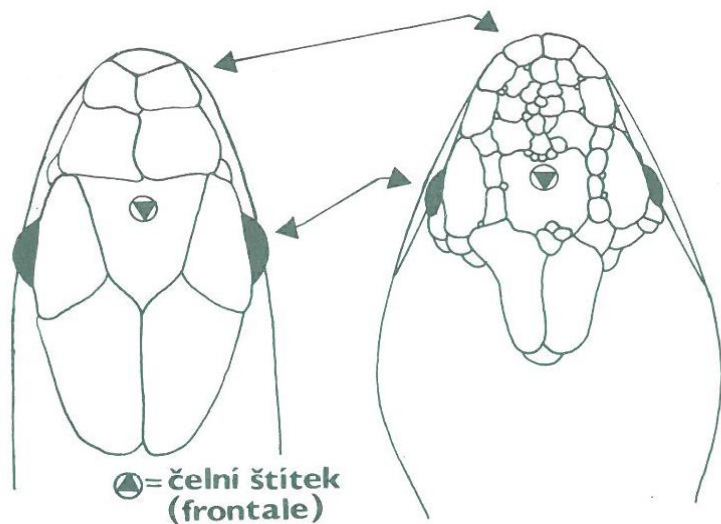


c) midbody scale counts

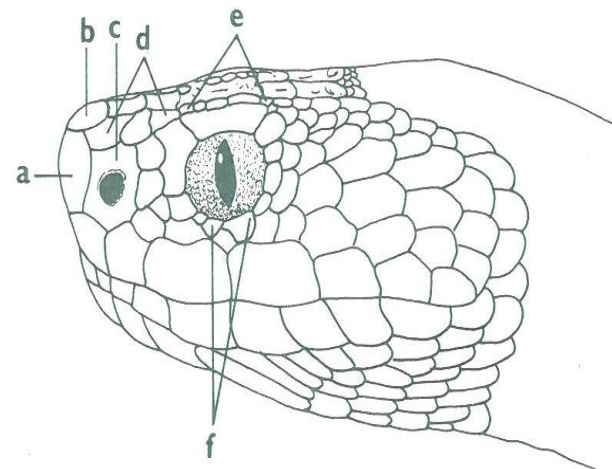




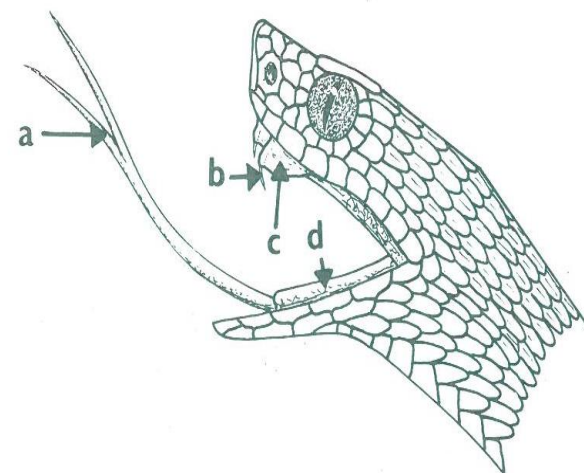
120. Rozdíly mezi užovkou a zmijí [schéma I]: A — profil hlavy užovky, B — profil hlavy zmije.



121. Rozdíly mezi užovkou a zmijí [schéma II]: hlava shora užovky (A) a zmije (B).



126. Hlavové štítky zmije obecné ze strany:
a — čenichový (rostrale), b — nadčenichový (apicale), c — nosový (nasalia), d — nadnosový (canthalia), e — oboční (circumorbitalia), f — podoční (suborbitalia), g — nadoční (supraocularia).



127. Hlava zmije obecné:
a — rozeklaný jazyk, b — jedový zub, c — slizniční řasa, již je zub při klidové poloze zcela zakryt, d — slizniční pochva jazyka.