

Kubismus

1908-10 raný kubismus

1910-12 analytický

1912-14 syntetický

pozdní do 20 let.

průkopníci: Picasso, Braque

„ateliéroví kubisté“ – Picasso, Braque, Gris, (Léger)

„salónní kubisté“ – Metzinger, Gleizes, Le Fauconnier, Léger,
Duchamp (Salón nezávislých 1911)

DER WEG
ZUM KUBISMUS

VON
DANIEL HENRY

MIT 24 ABWERTUNGEN VON G. G. G. G.

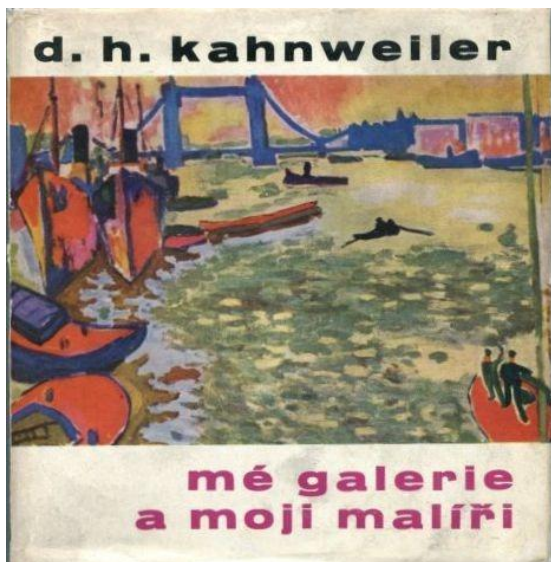


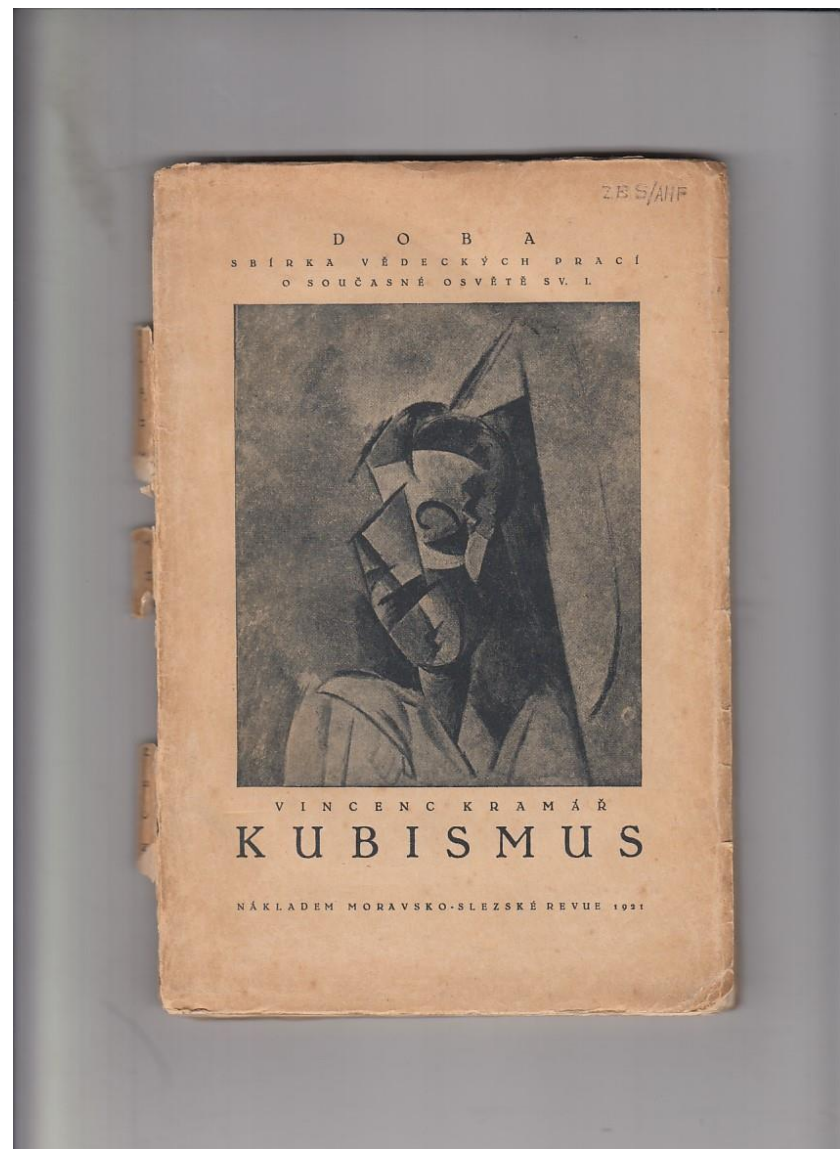
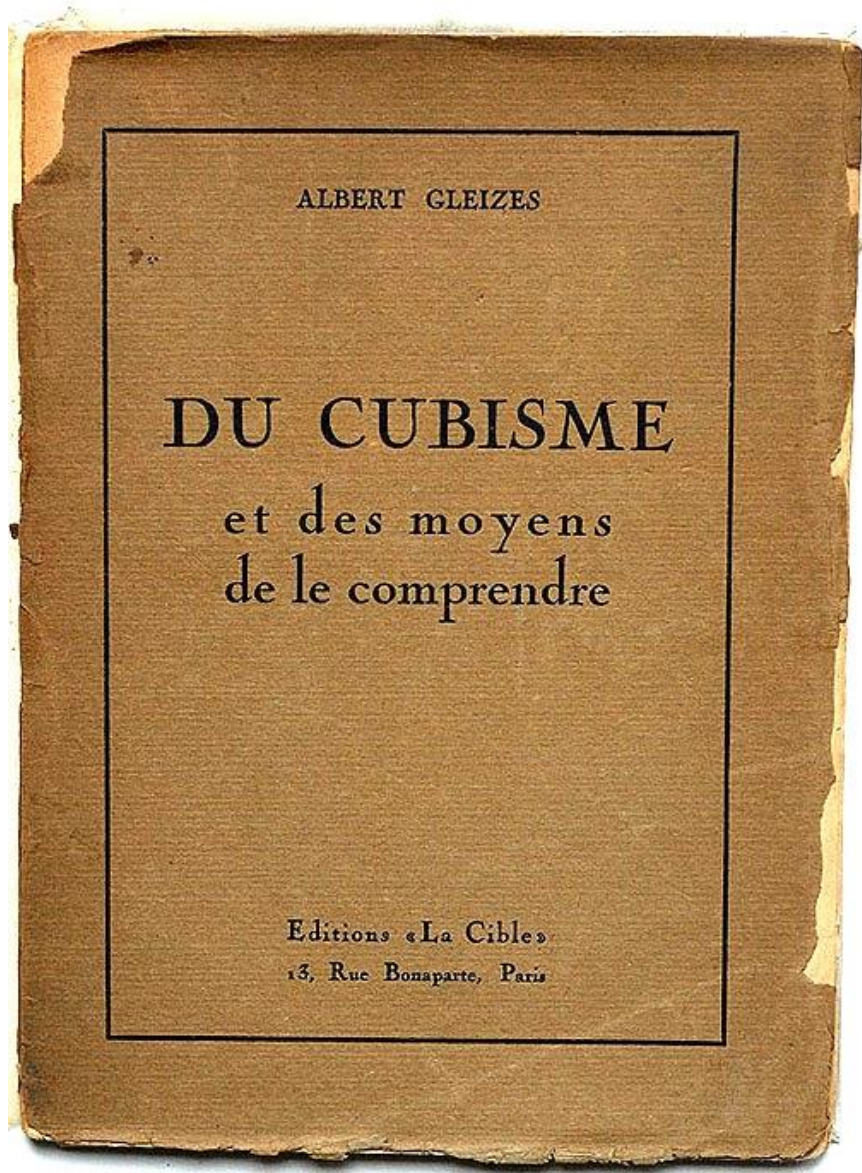
MÜNCHEN
DELPHIN-VERLAG

1920



Daniel - Henry Kahnweiler





1912

„Kubismus“ – 1911

Kubismus:

- vědecký (P+B)
- fyzický (salónní)
- orfický (abstrakce)
- instinktivní



THE CUBIST PAINTERS

+++

GUILLAUME APOLLINAIRE

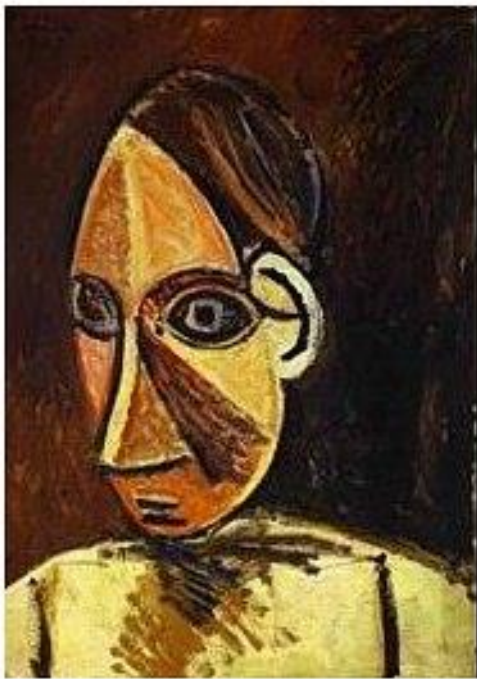
TRANSLATED, WITH COMMENTARY,
BY PETER READ

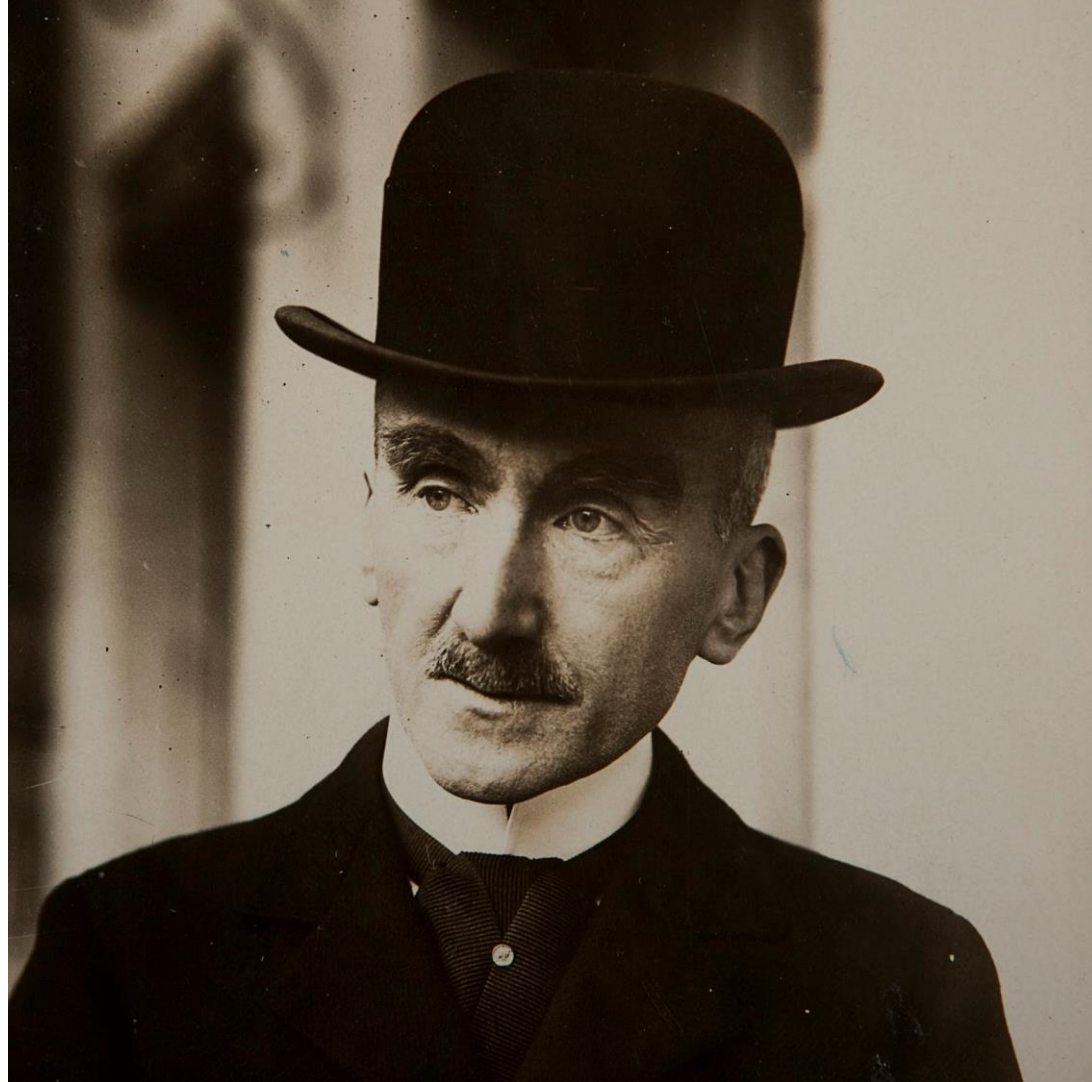
1913



Paul Cezanne, Bibemus Quarry, 1900

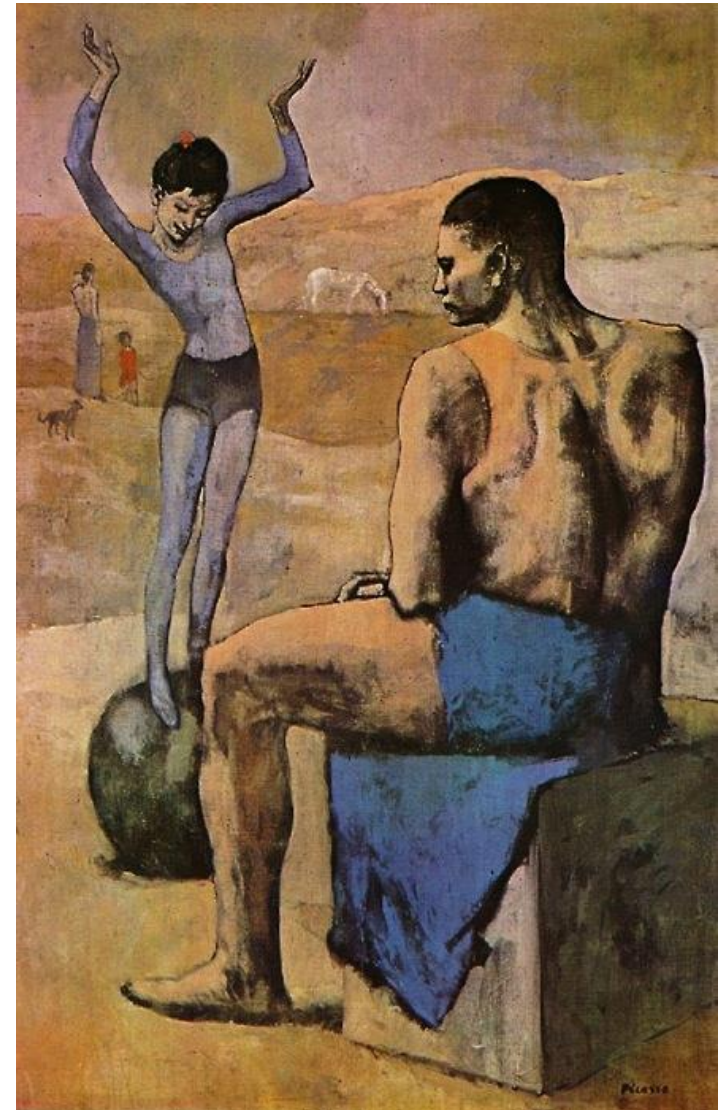
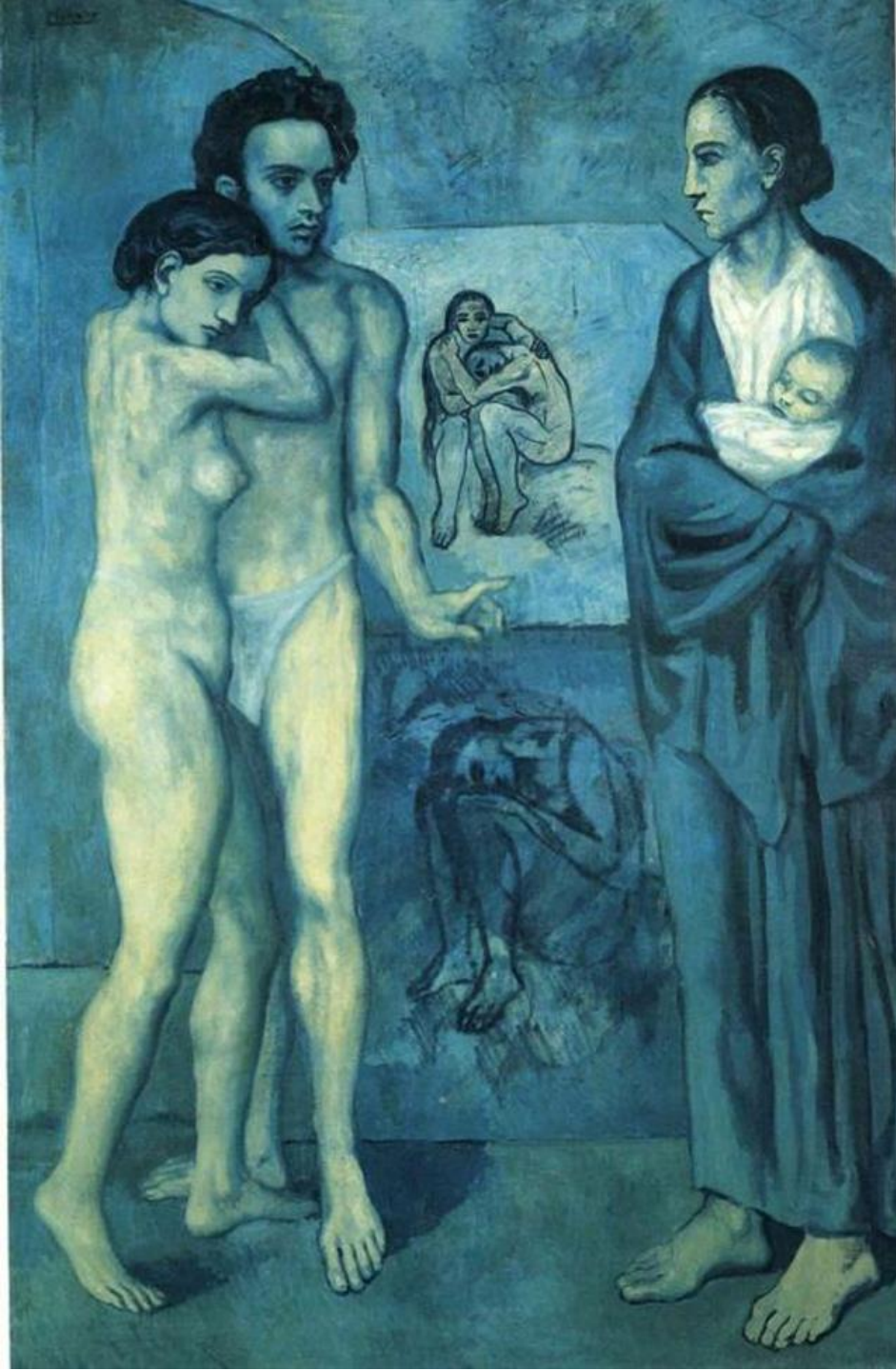






Henry Bergson

Vnímání je vždy provázáno s minulostí a budoucností, a proto se z něj nedá vyčlenit nějaká část, aniž bychom se dopustili zkreslení, redukce. Život subjektivně zakoušen jako kontinuum.



Pablo Picasso*

modré období 1901-1904

růžové období 1904-1906

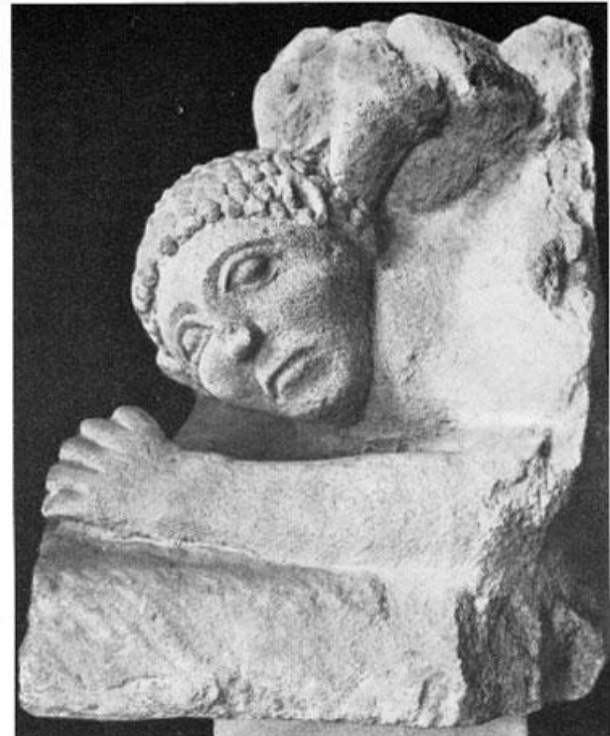
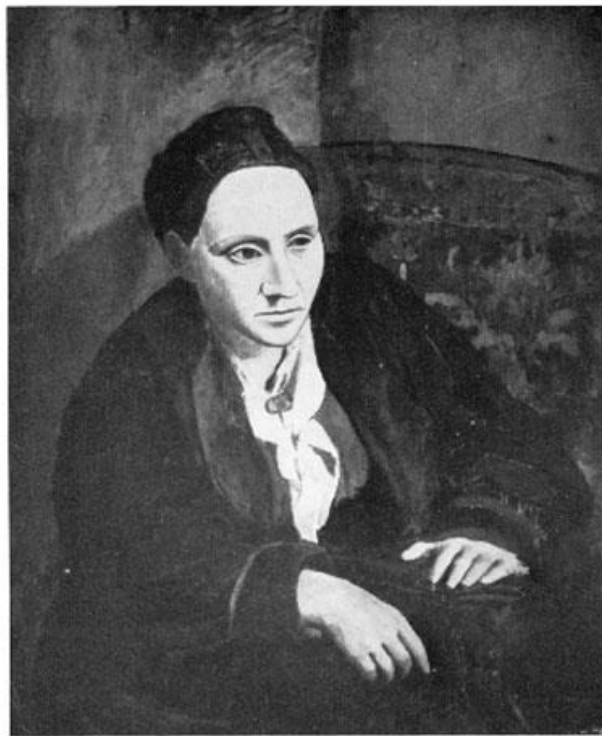


FIG. 1. Pablo Picasso: Portrait of Gertrude Stein, Oil, 1906

FIG. 2. Paris, Louvre: Negro Attacked by a Lion. Iberian Stone Bas-Relief from Osuna



Iberian sculpture, Osuna, Spain, detail



Self-Portrait, 1906, detail

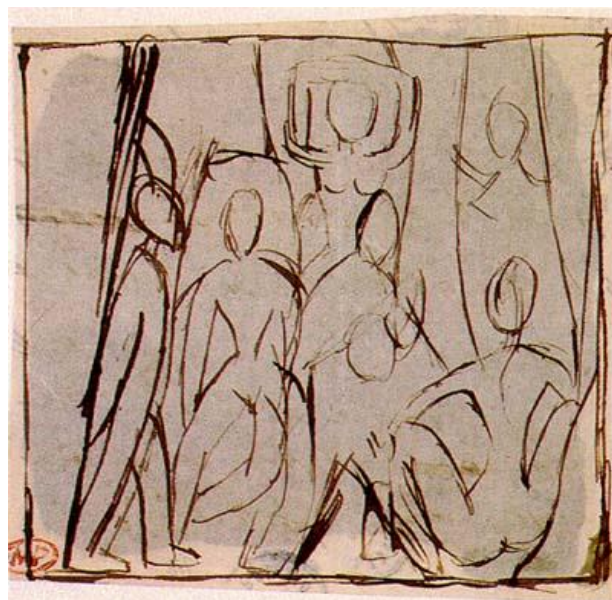


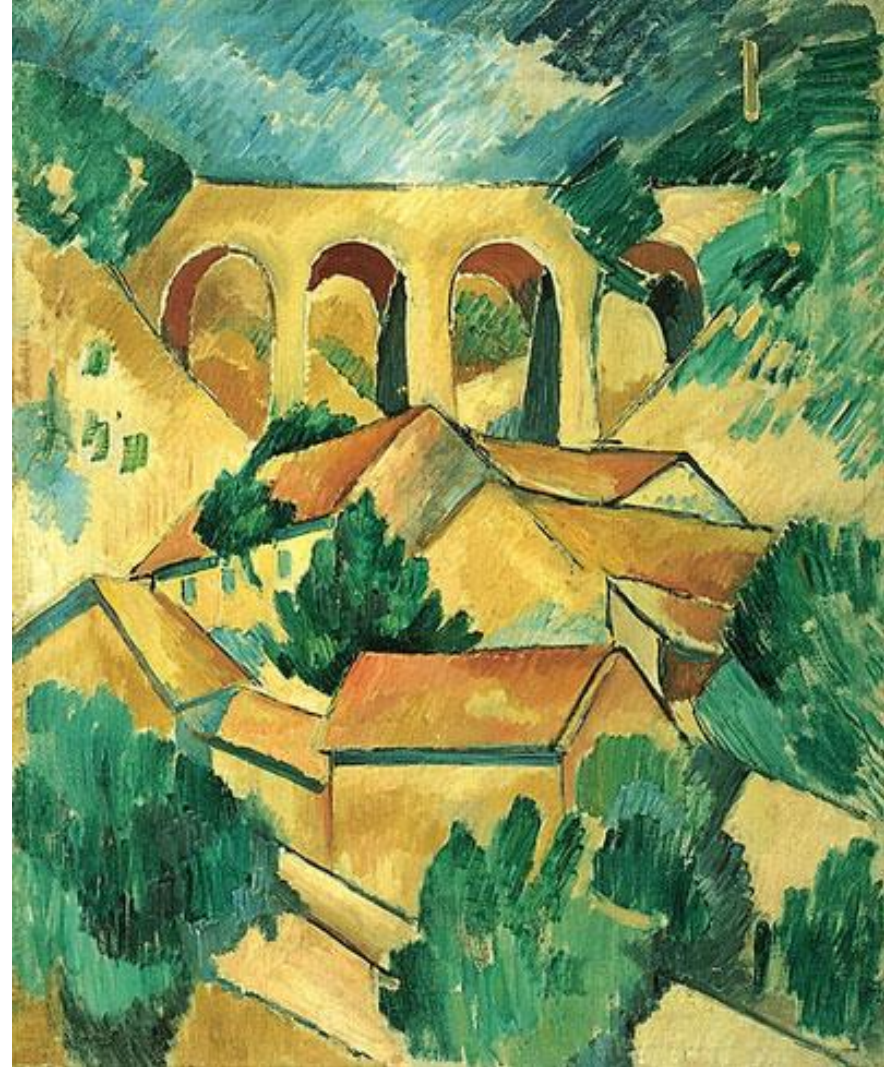
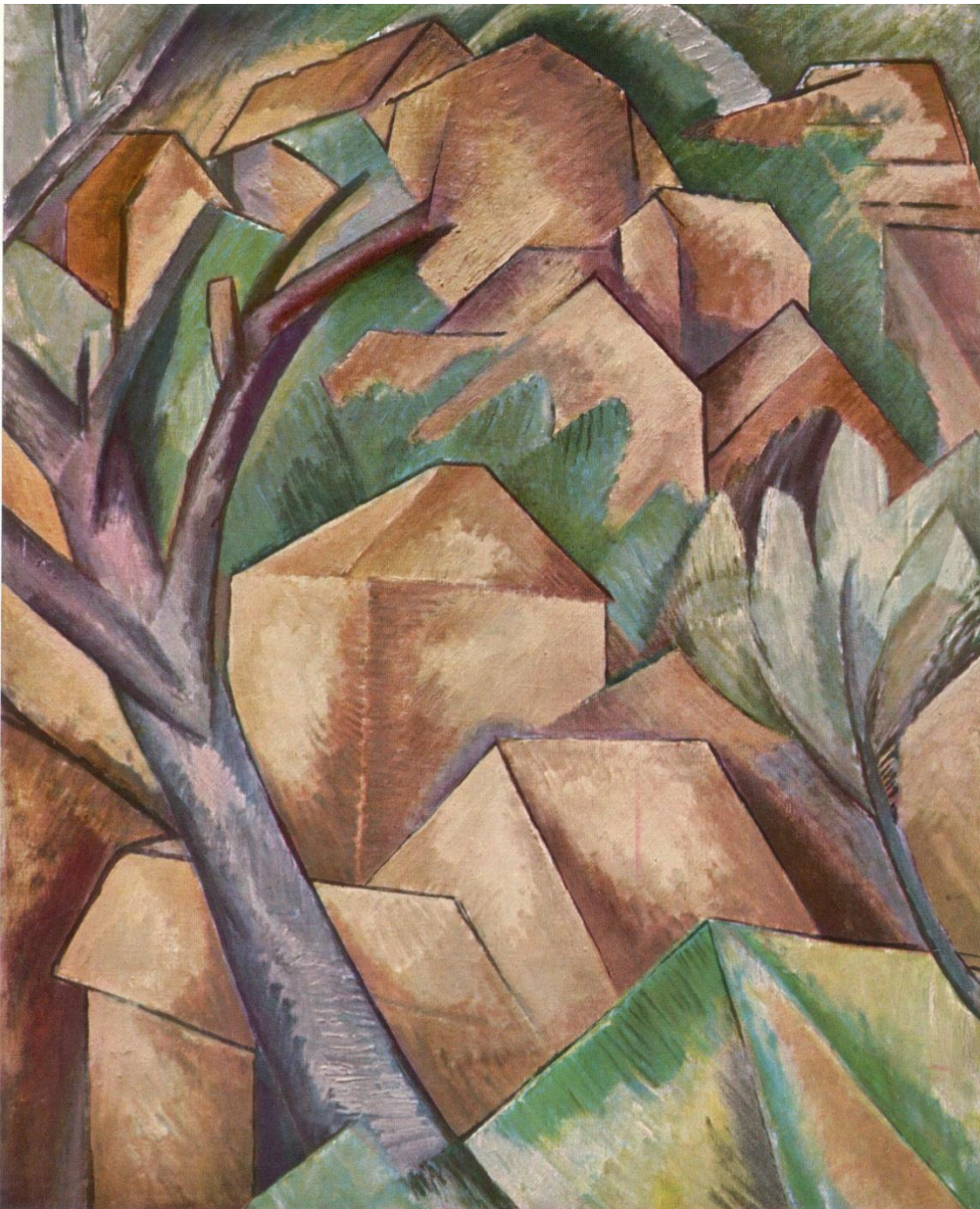
Head of a Woman, 1907

*Avignonské slečny,
1907



Avignonské slečny,
přípravné kresby





***Georges Braque,**
L'Estaque, 1908

Picasso, 1910



*Picasso, Portrét Ambroise Vollarda,
1910



Picasso, 1911



Georges Braque
1909



Braque, 1910

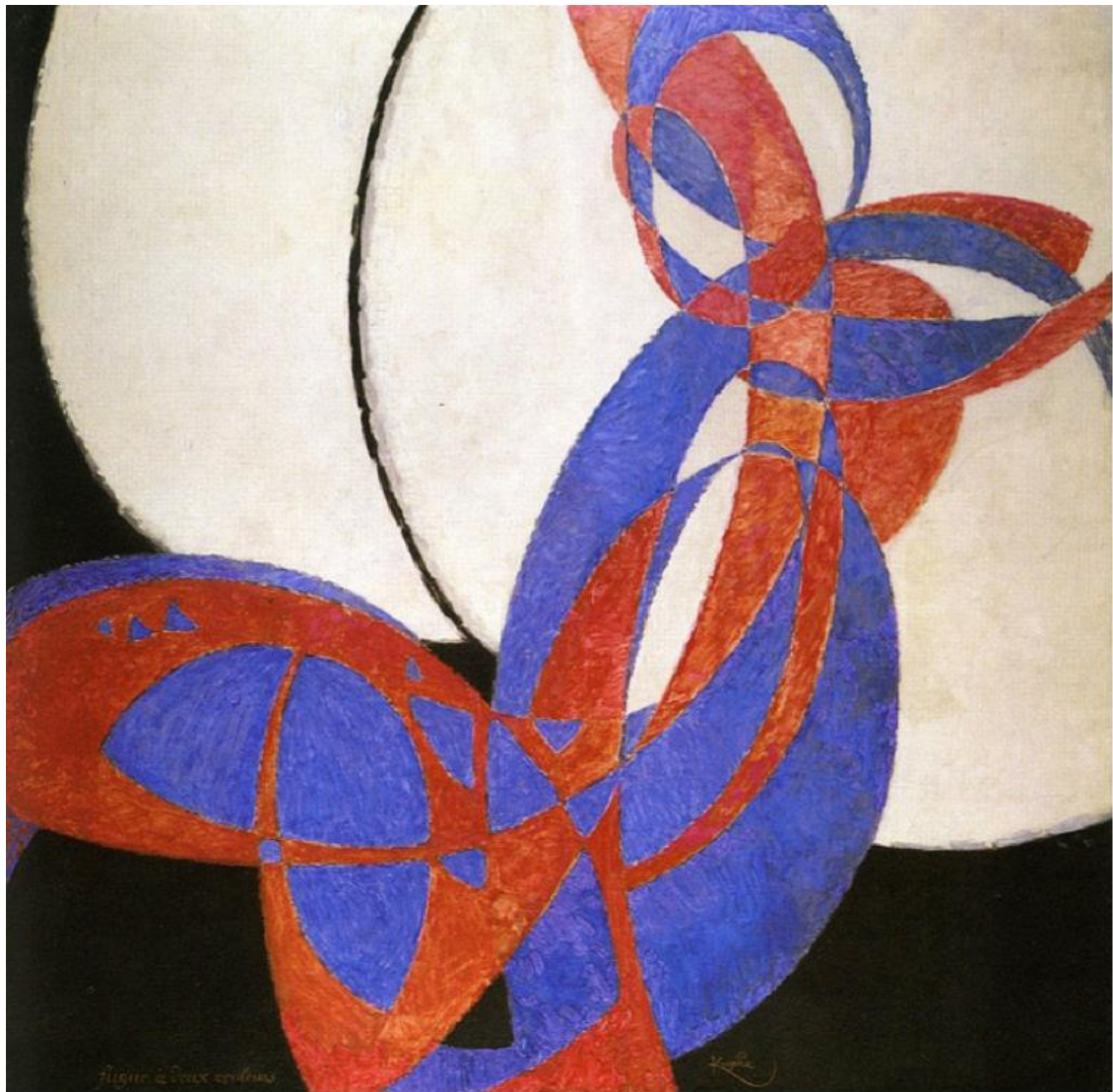




*Portugalec 1911



Robert Delaunay
1912

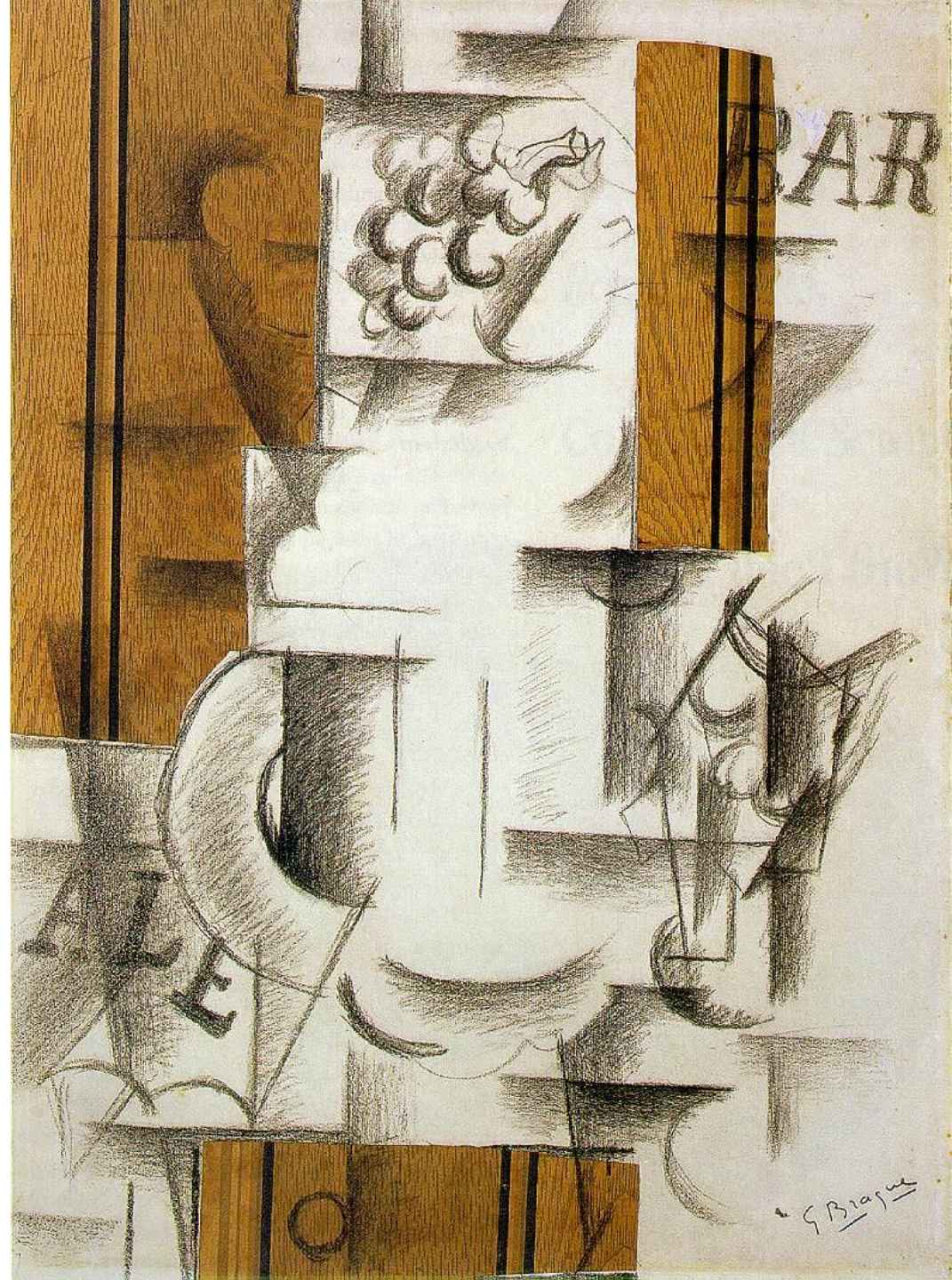


František Kupka 1912



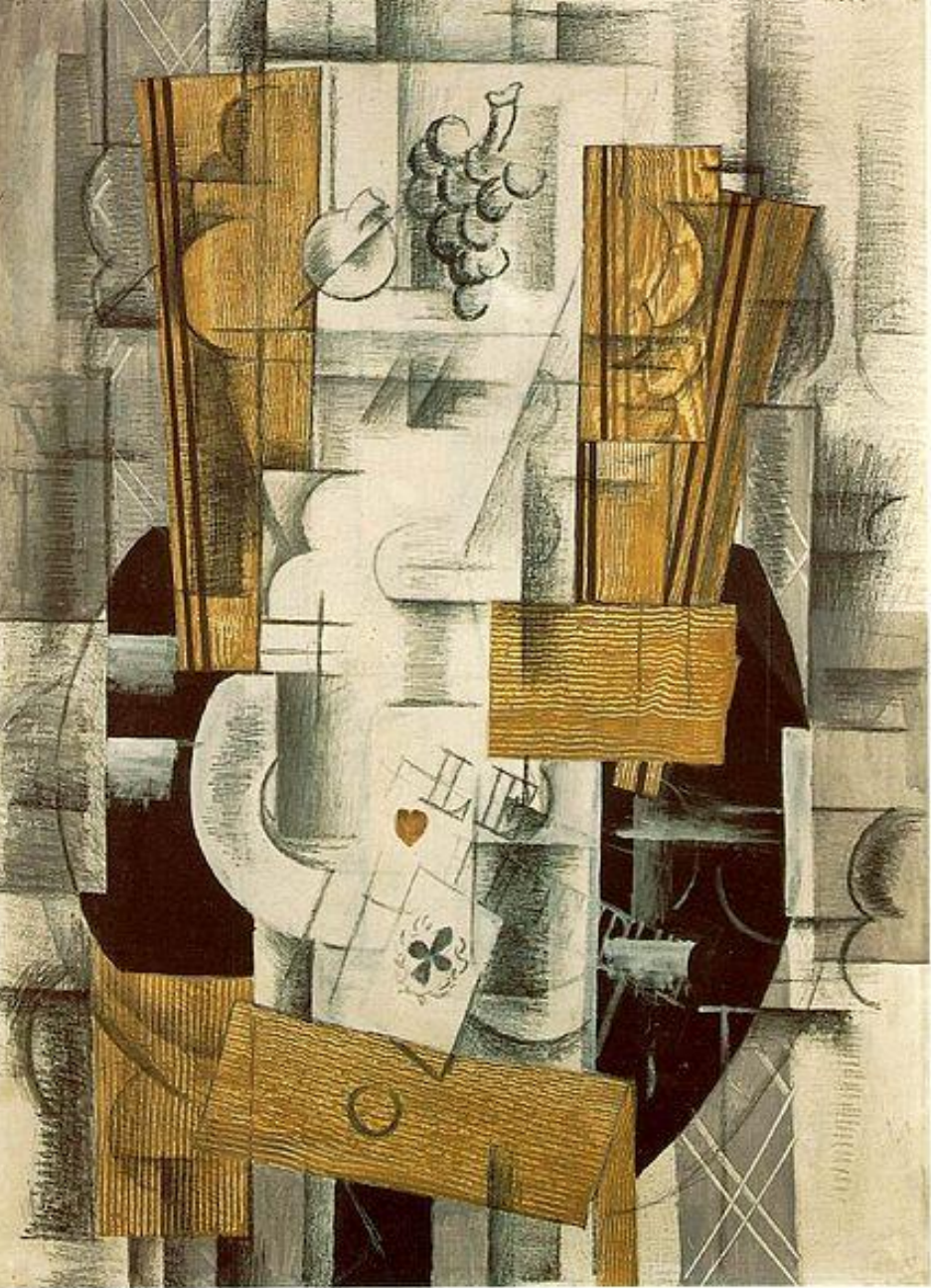
Picasso, 1912*

Braque 1912





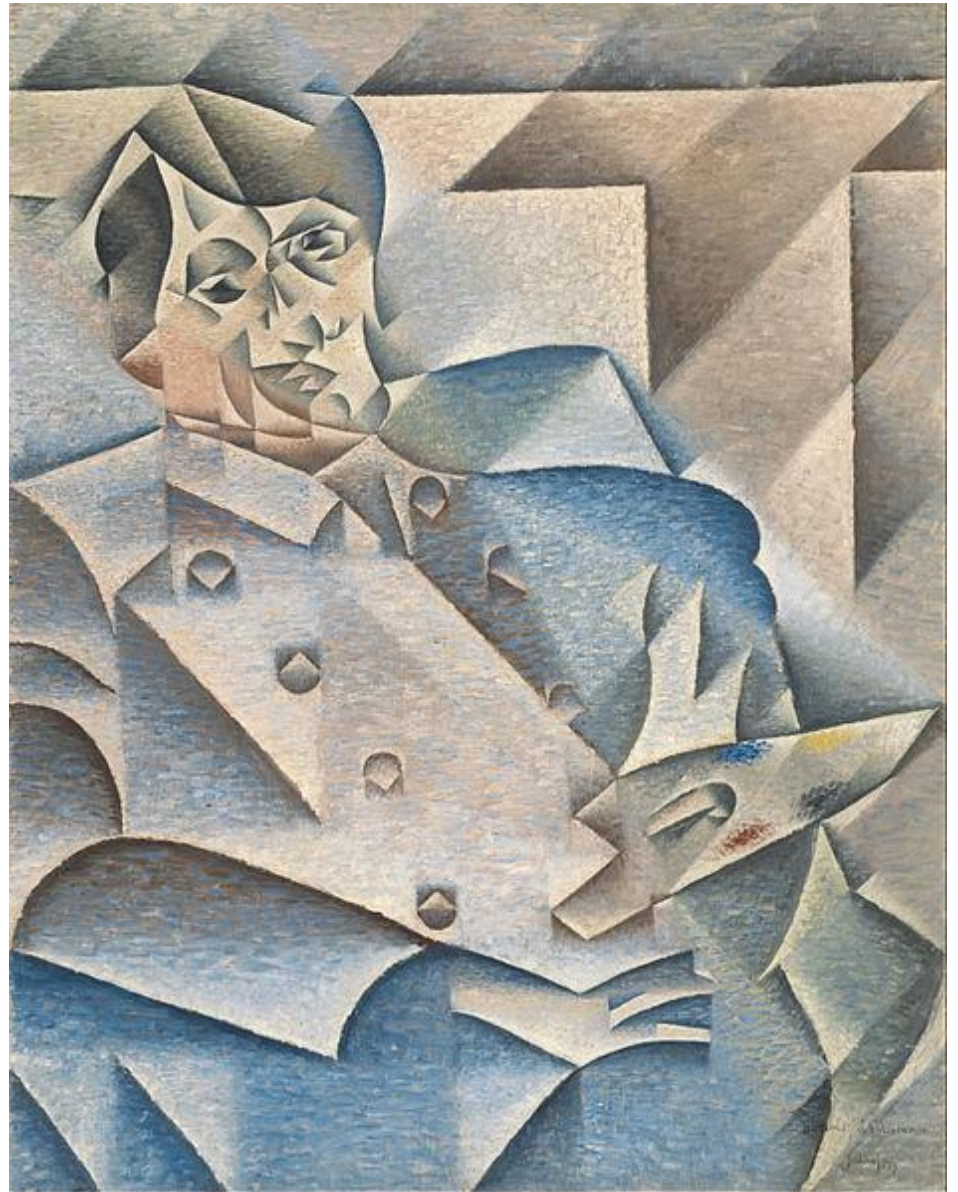
Picasso



Braque

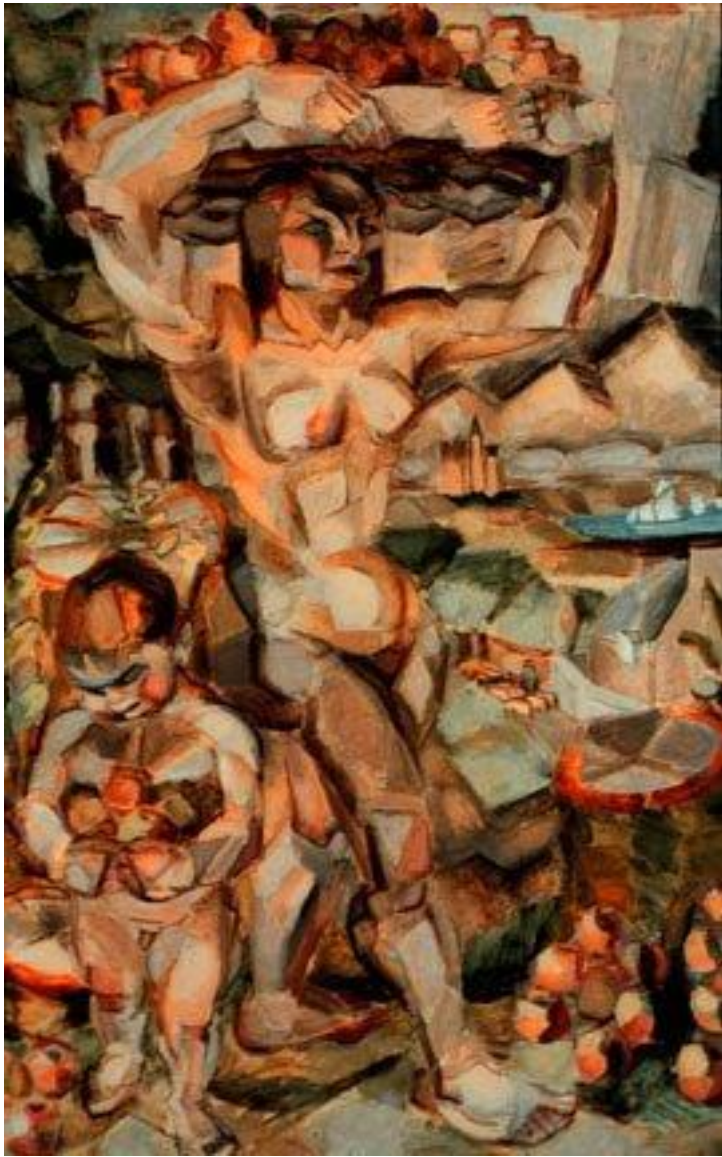


*Juan Gris, *Portrait of Pablo Picasso*,
1912





1915



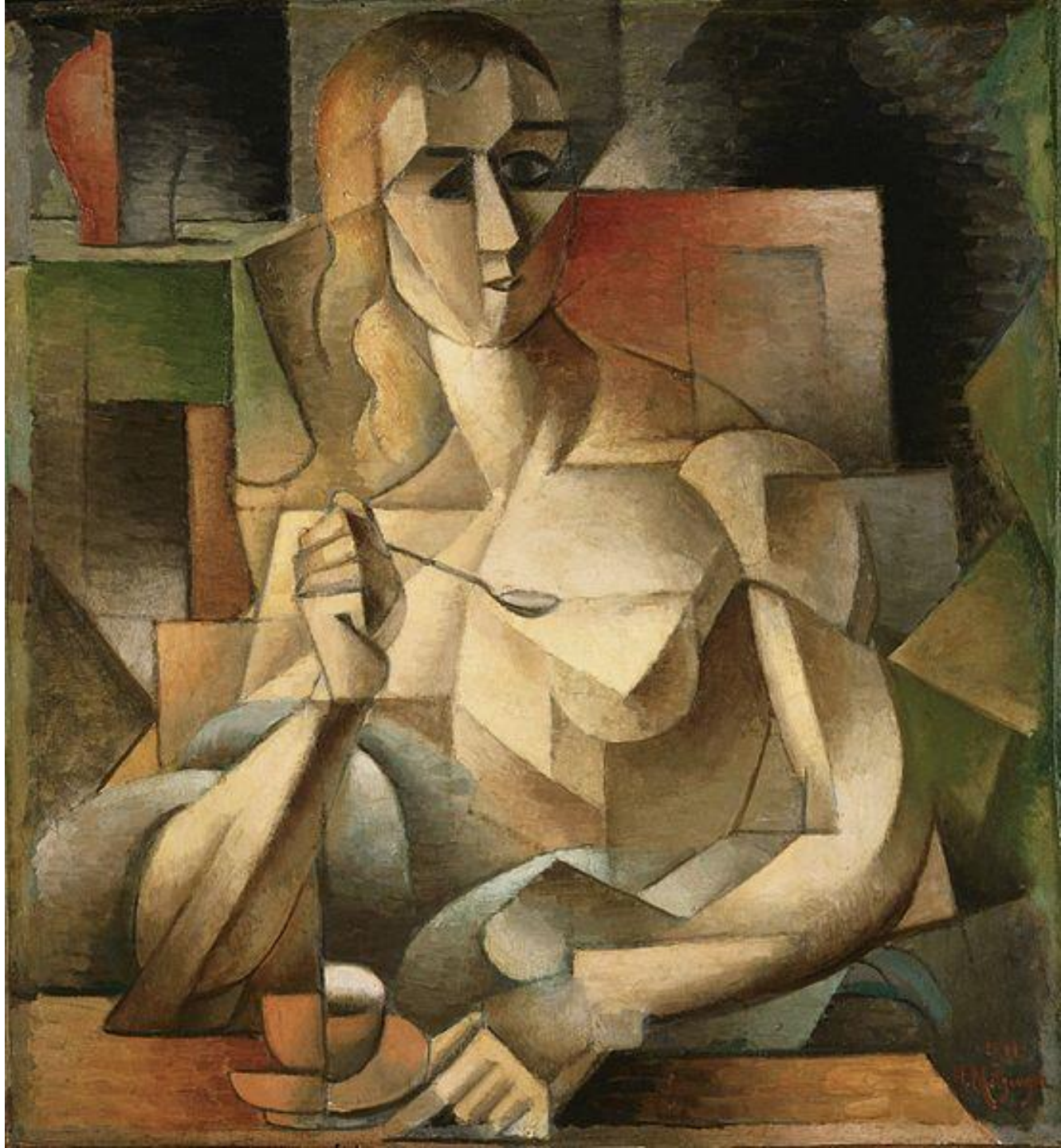
Henry Le Fauconnier



Albert Gleizes, Žena 1910



Jean Metzinger,
1911





Marcel Duchamp, Akt sestupující ze schodů,
1912*

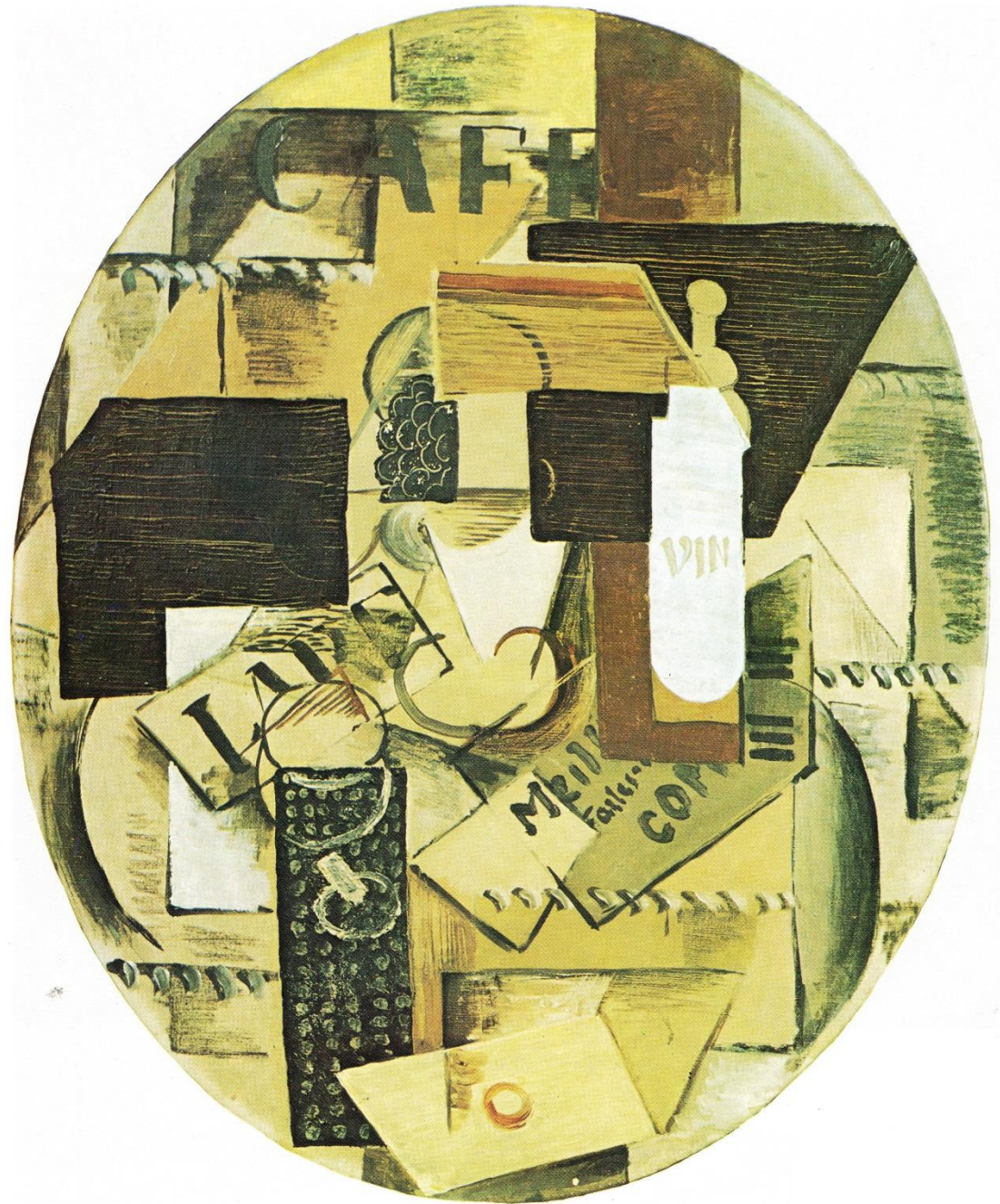
Skupina výtvarných umělců, 1911 – 1914

Emil Filla*

Salome, 1911



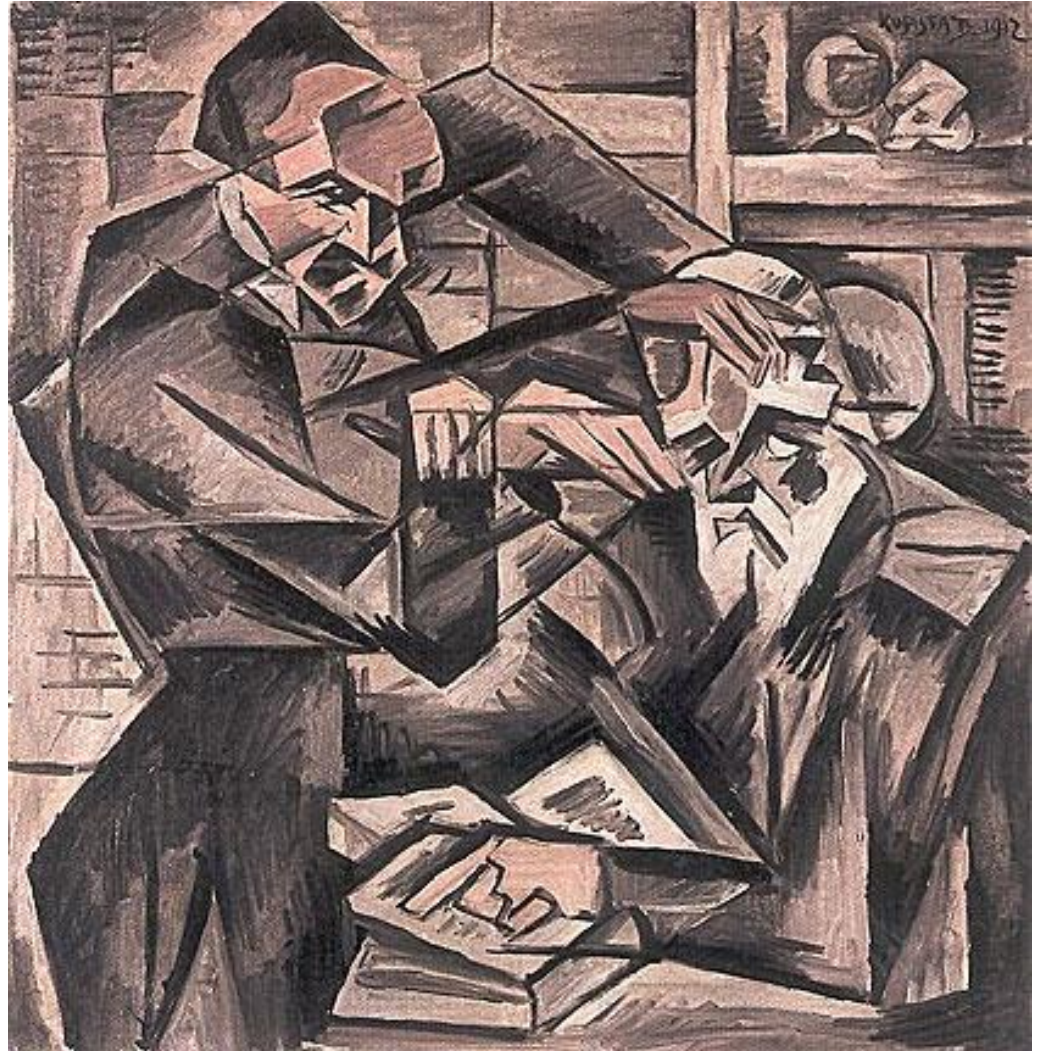
Zátiší s podnosem, 1914



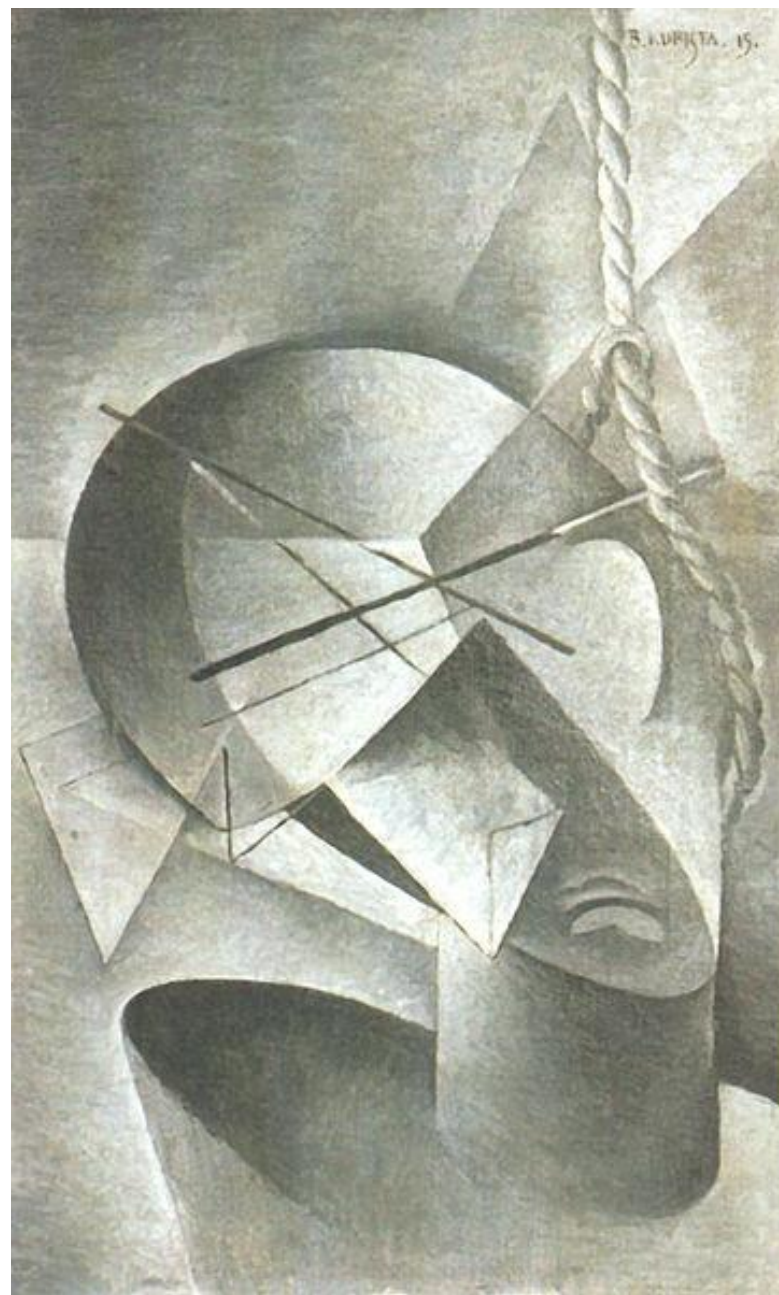
Bohumil Kubišta*

Hypnotizér, 1912

Kuřák, 1910



*Oběšený, 1915





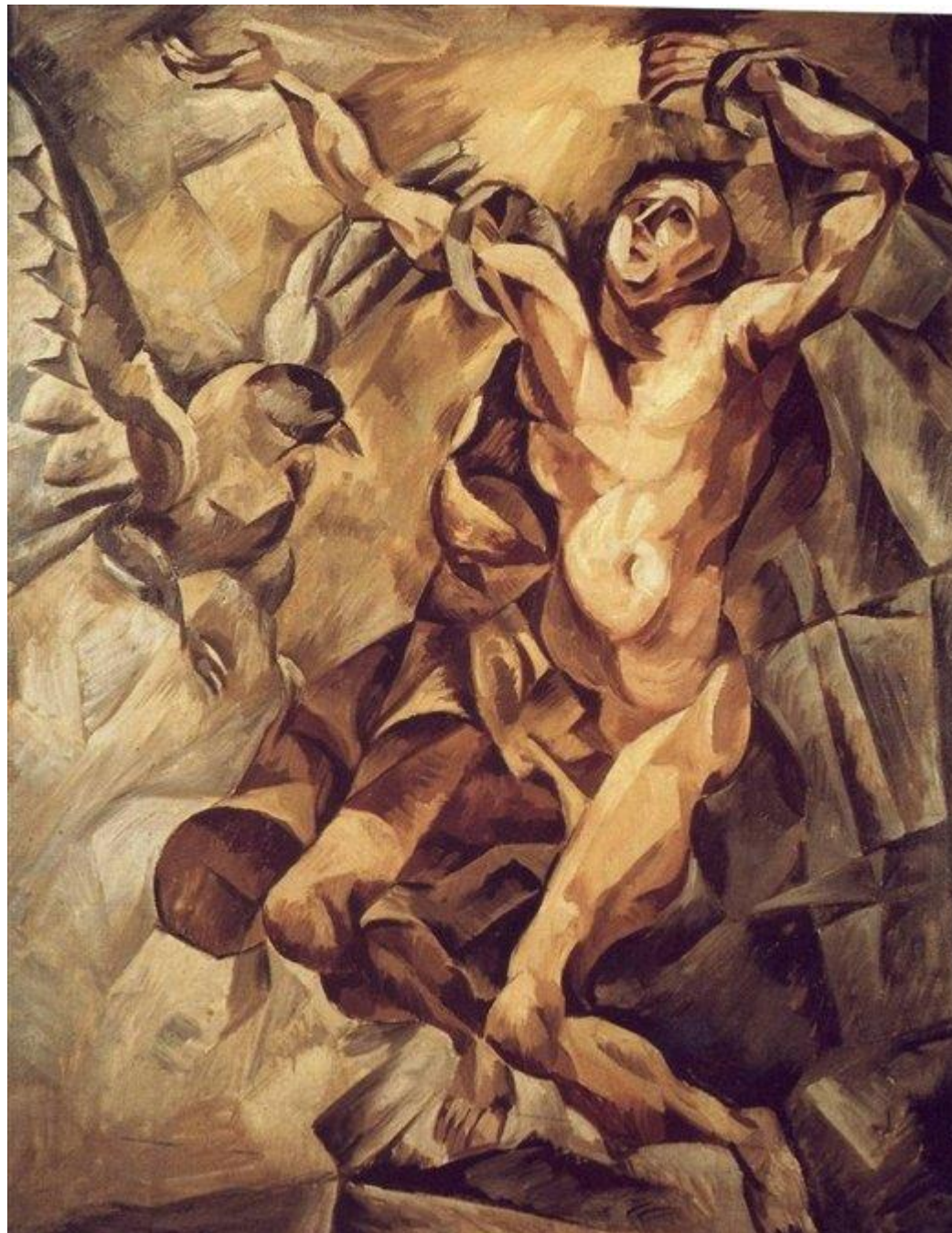
Vlak v horách, 1912

Pobřežní děla v boji s loďstvem, 1913



***Antonín Procházka**

***Prométheus 1910**





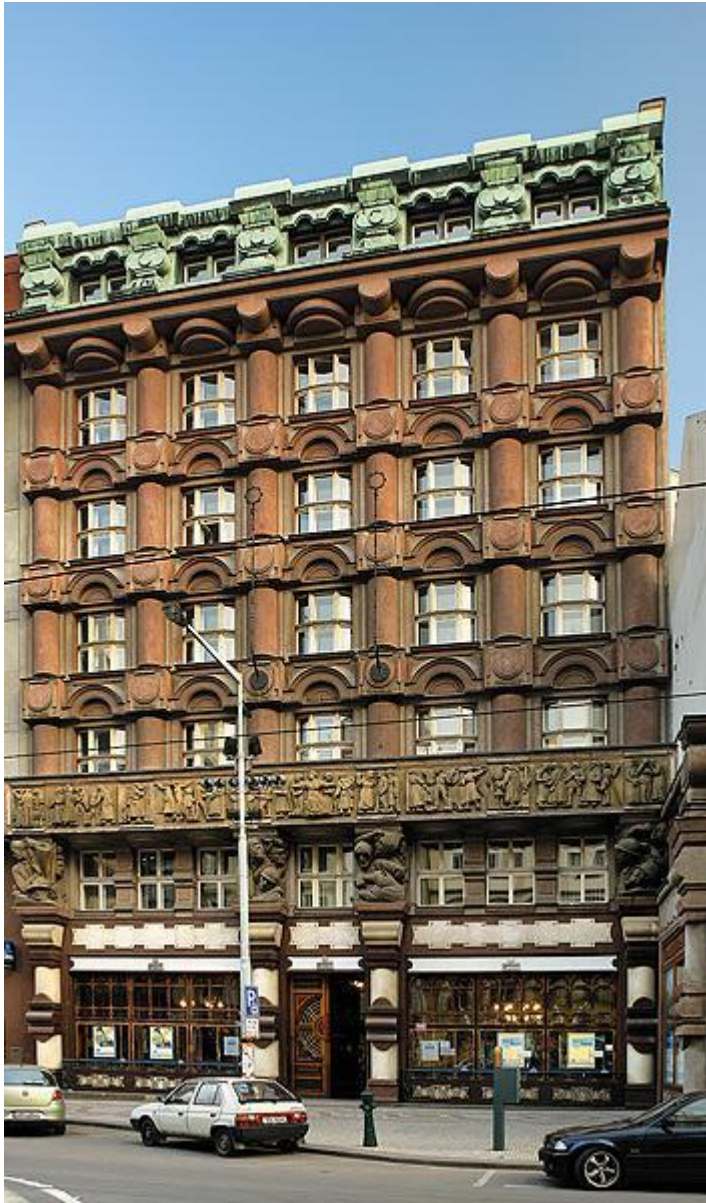
Josef Gočár*



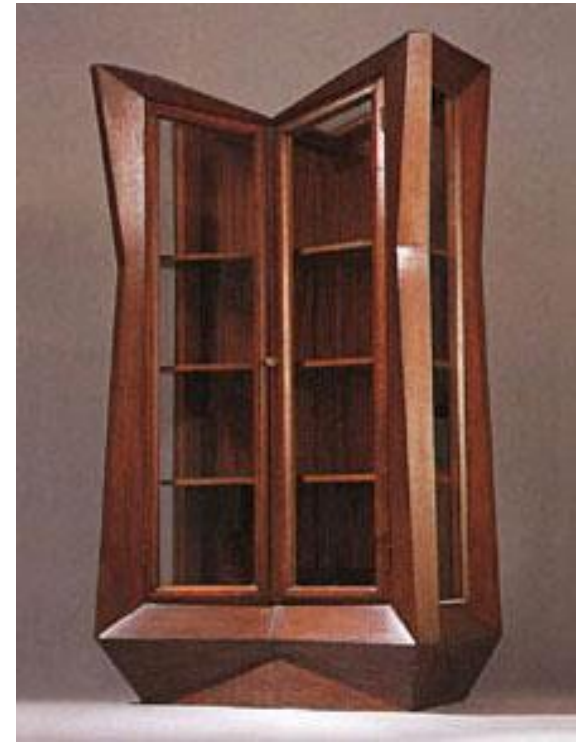
Dům U Černé Matky
Boží, 1911-12*

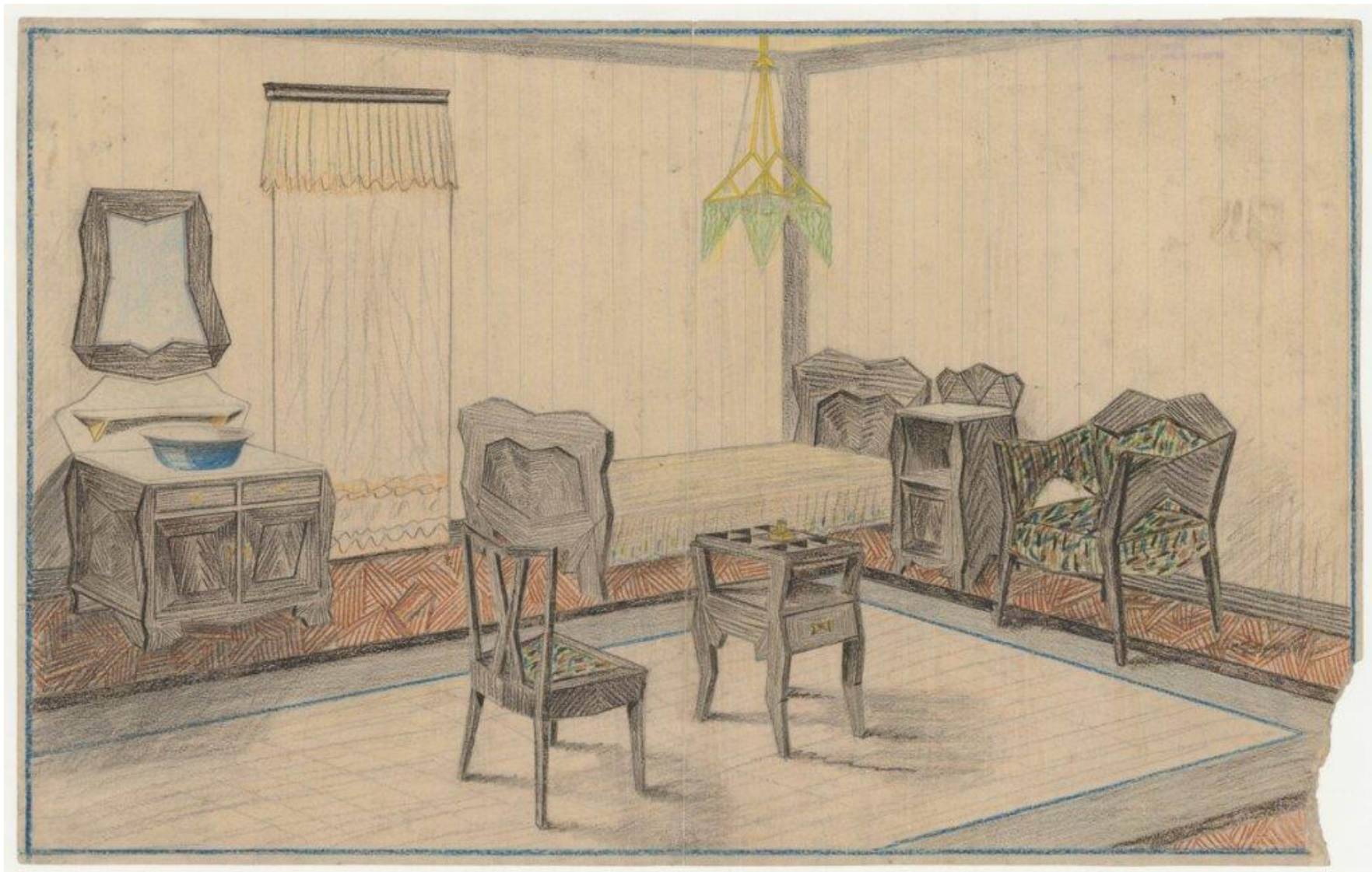
Lázně Bohdaneč, 1913





Legiobanka, 1921 - 23





Pokoj Otto Bolešky

Pavel Janák*



Fárův dům v Pelhřimově (štít), 1912

Palác Adria, 1922-25



Národní

Krematorium v Pardubicích, 1921-23



Josef Chochol*



Kovařovicova vila v Praze / 1912 – 13

Dům v Neklanově ulici v Praze / 1913-14*

Vlastislav Hofman

