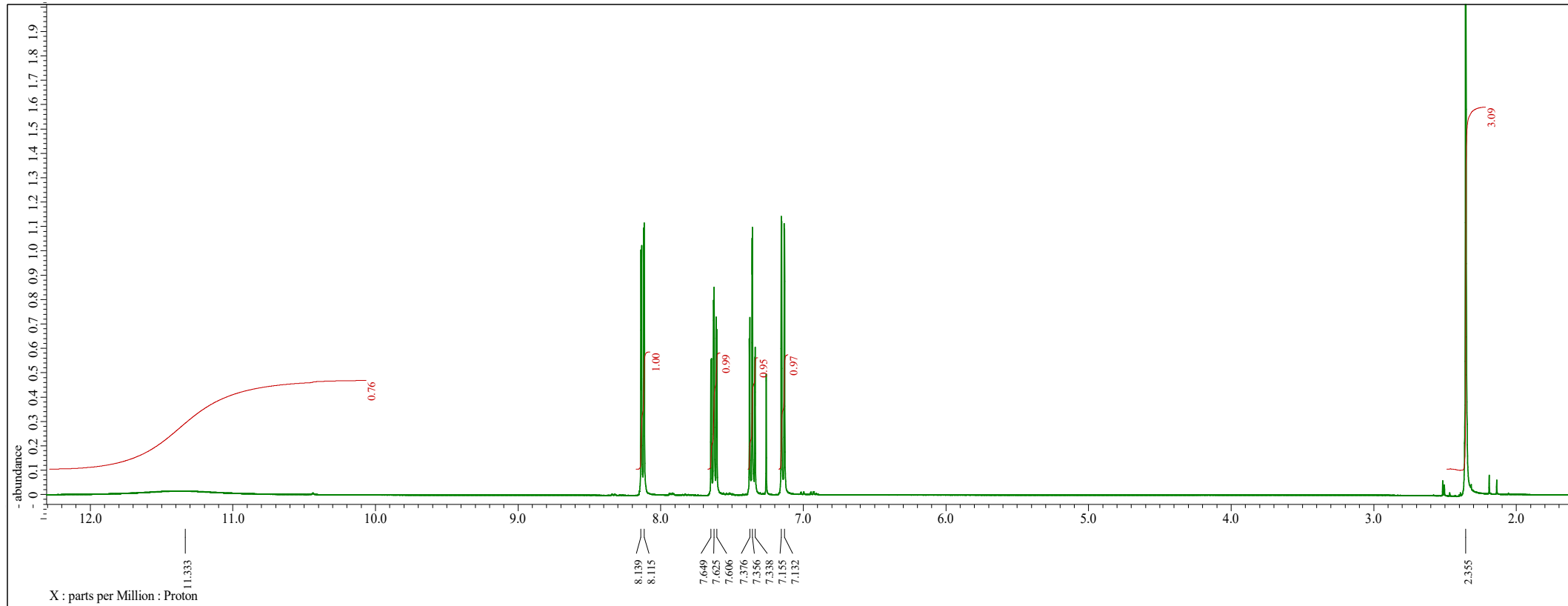
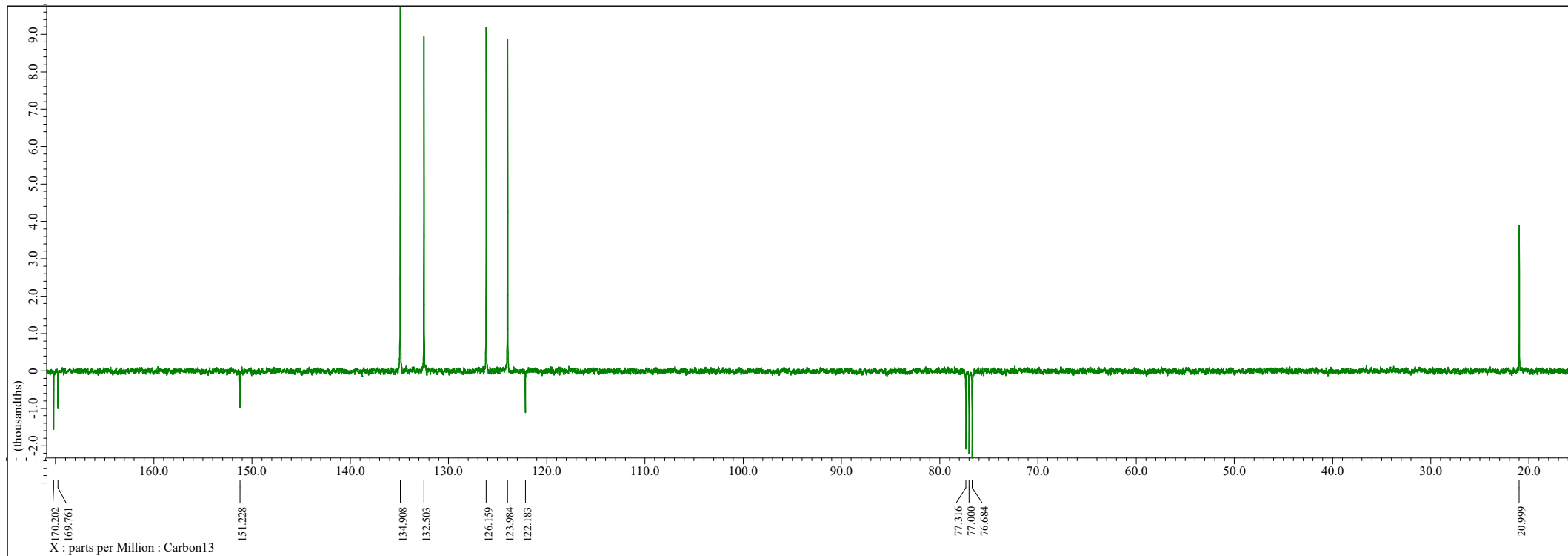


# Příklady NMR a IČ spekter k interpretaci

# Acetylsalicylová kyselina, $^1\text{H}$ , $\text{CDCl}_3$ , 400MHz

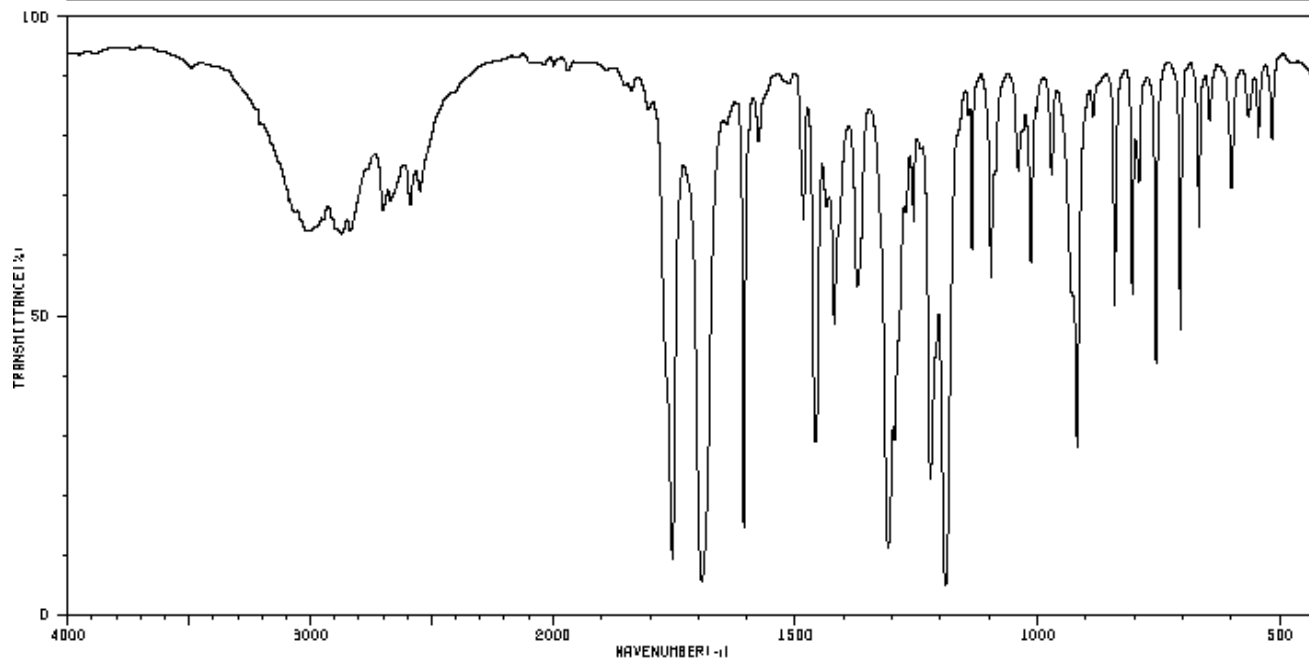


Acetylsalicylová kyselina,  $^{13}\text{C}$  - apt,  $\text{CDCl}_3$ , 100MHz

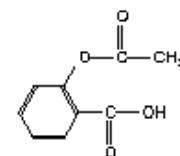


# Acetylsalicylová kyselina, IČ, KBr tableta

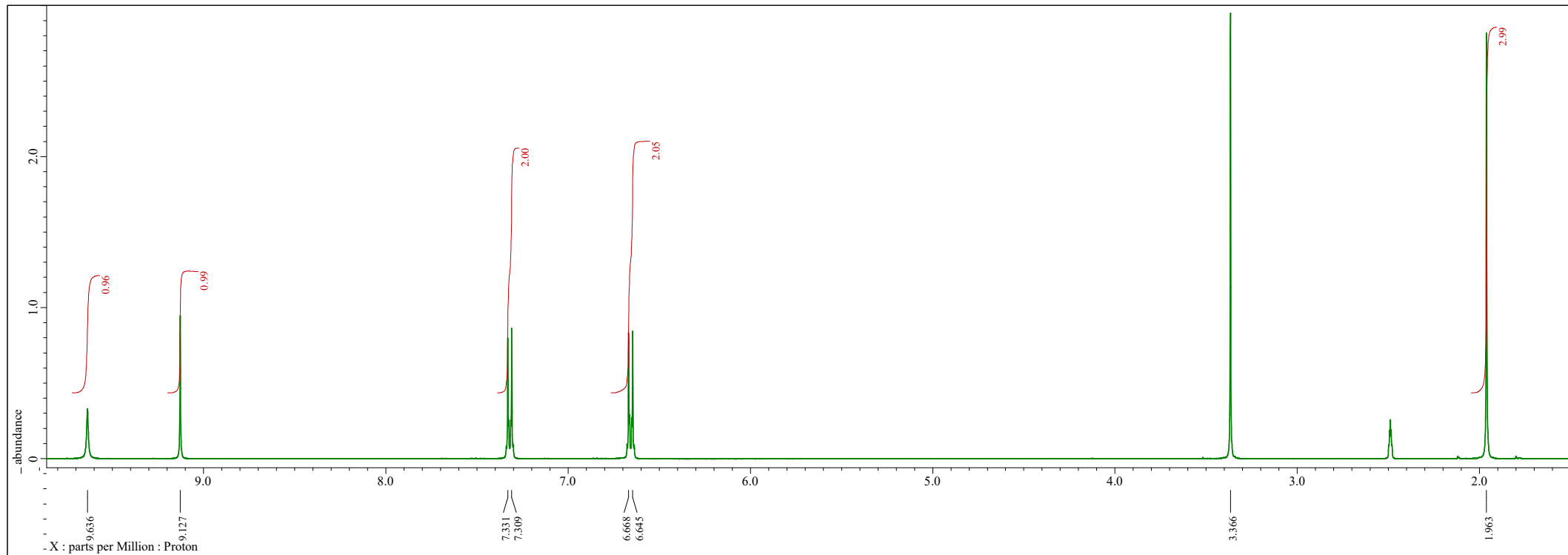
HIT-NO=1022	SCORE= ( )	SDBS-NO=532	IR-NIDA-63853 : KBR DISC
O-ACETOXYBENZOIC ACID			
C <sub>9</sub> H <sub>8</sub> O <sub>4</sub>			



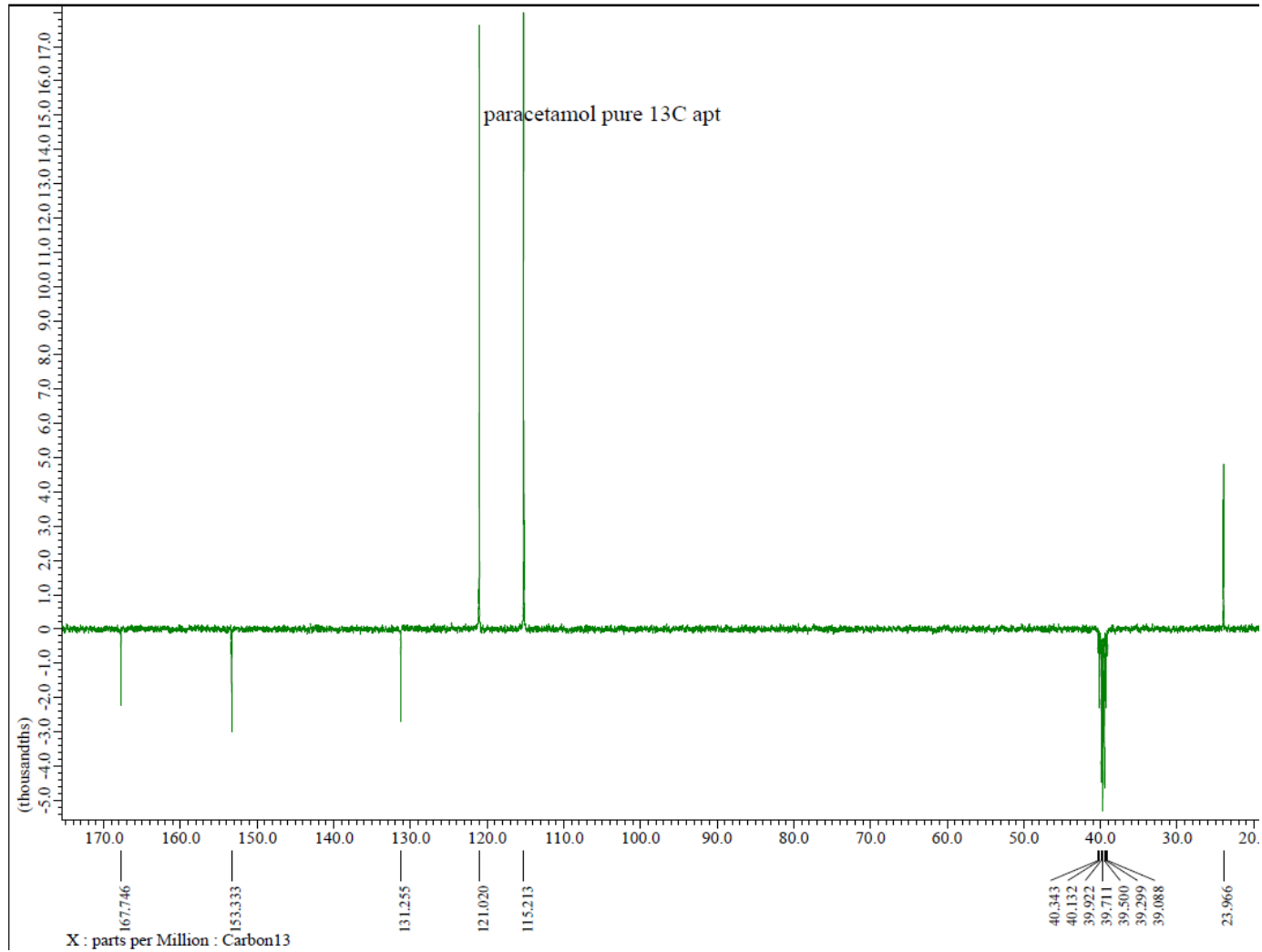
3006	62	2589	66	1436	66	1222	21	918	26
2983	62	2548	68	1420	47	1190	4	841	50
2891	82	1754	9	1372	53	1136	58	805	52
2872	62	1693	6	1308	10	1096	56	766	41
2834	62	1606	14	1295	28	1014	57	706	46
2701	66	1483	64	1272	84	971	70	667	62
2670	66	1459	27	1257	64	928	62	600	68



# Paracetamol, $^1\text{H}$ , 400 MHz, $\text{DMSO-D}_6$

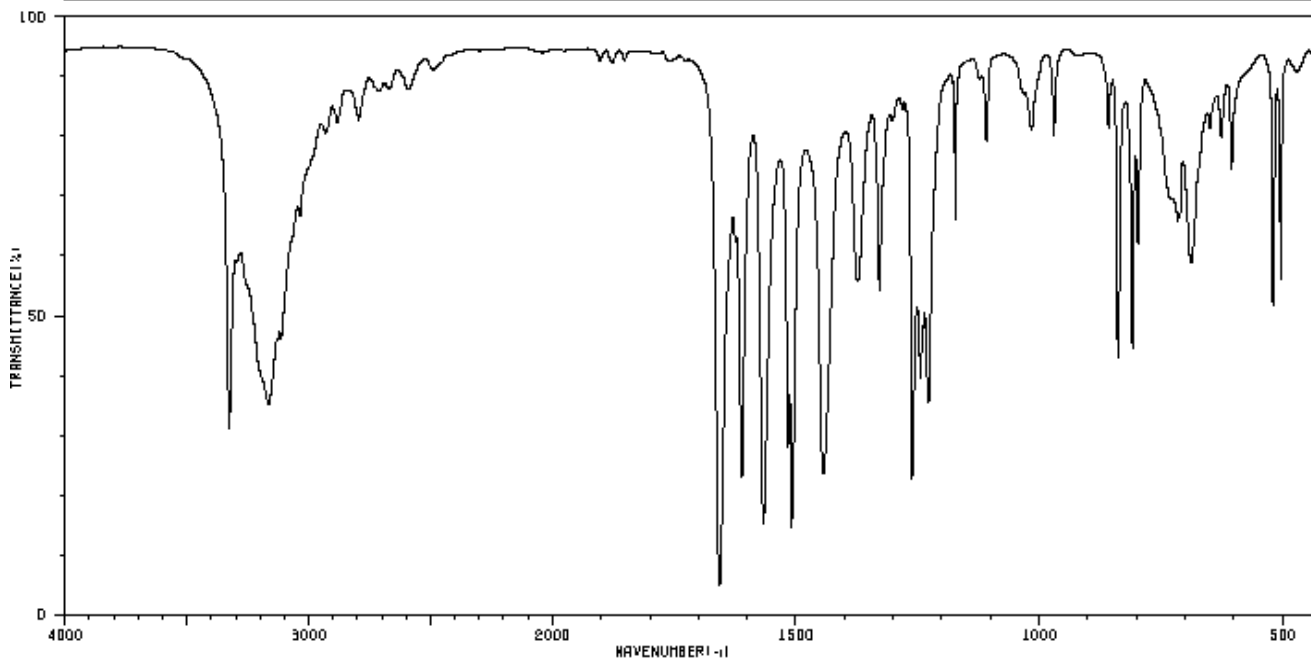


# Paracetamol, $^{13}\text{C}$ -apt, 100 MHz, DMSO- $\text{D}_6$

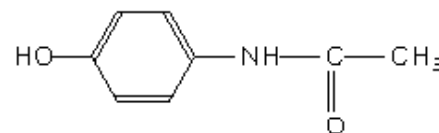


# Paracetamol, IČ, KBr tableta

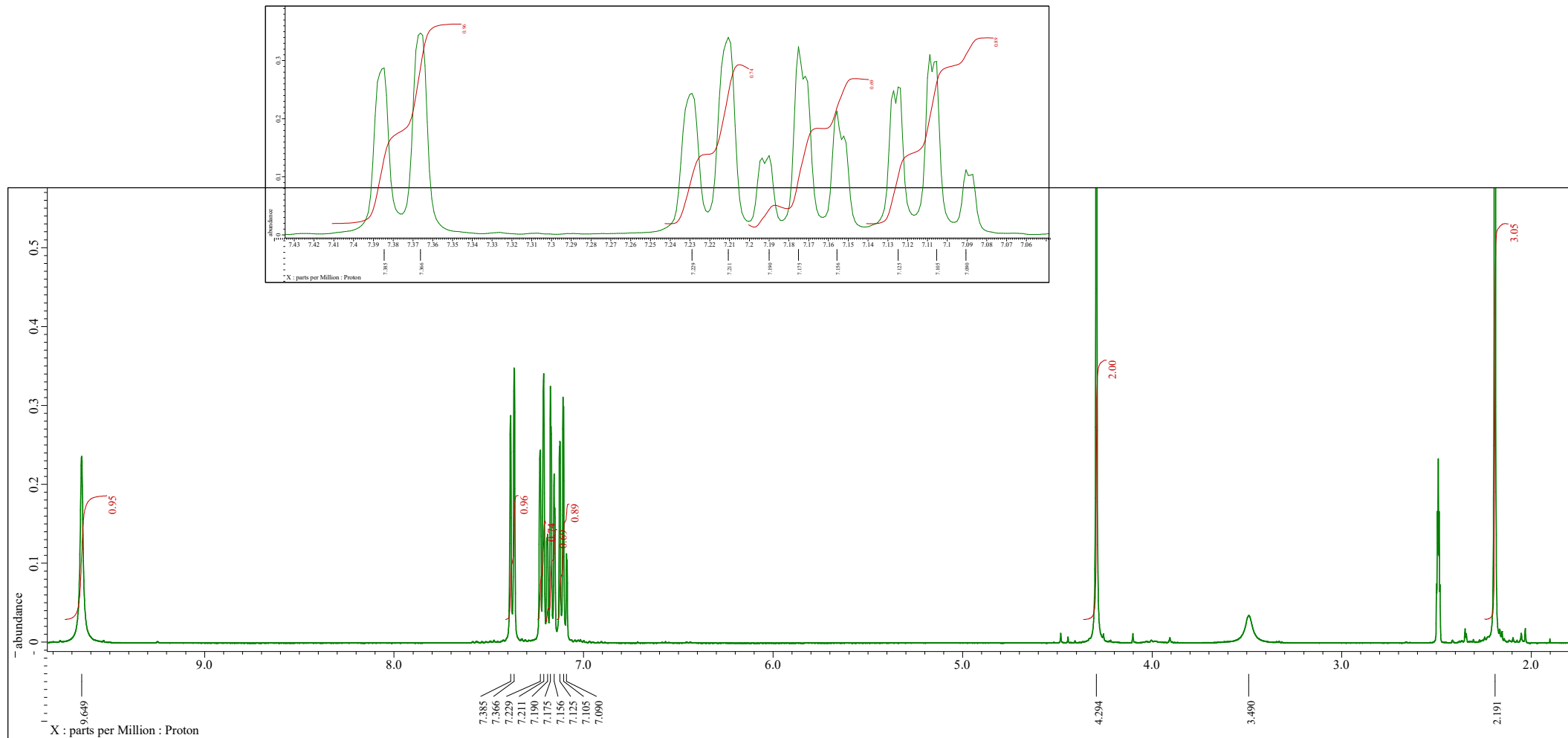
HIT-NO=2434	SCORE= ( )	SDS-NO=3290	IR-NIDA-61329 : KBR DISC
4'-HYDROXYACETANILIDE			
C <sub>8</sub> H <sub>9</sub> NO <sub>2</sub>			



3326	30	1657	4	1373	63	1108	77	716	62
3165	33	1624	60	1329	52	970	77	689	57
3149	37	1611	21	1261	21	858	79	650	79
3114	44	1567	14	1244	37	839	41	626	77
3036	64	1516	26	1238	46	809	42	605	72
2930	77	1509	19	1228	34	797	60	521	49
2795	79	1444	22	1173	64	729	66	504	63

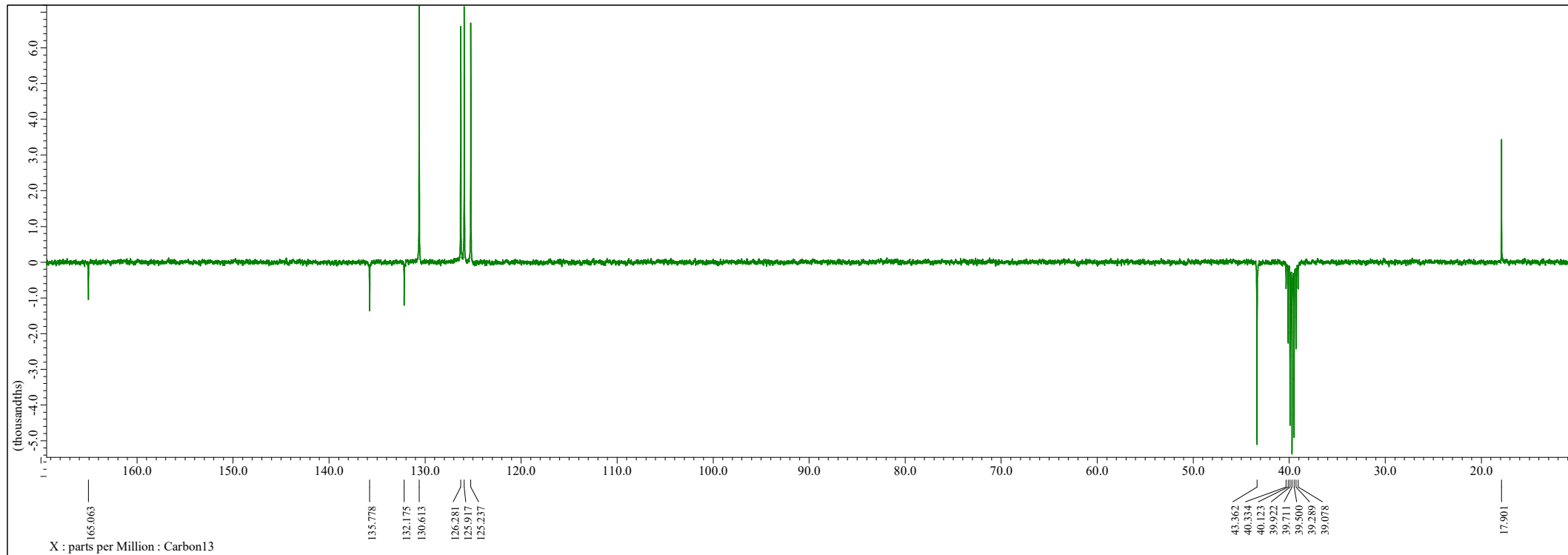


*N*-(2-methoxyphenyl)-2-chloracetamid,  $^1\text{H}$ , 400 MHz,  $\text{DMSO-D}_6$

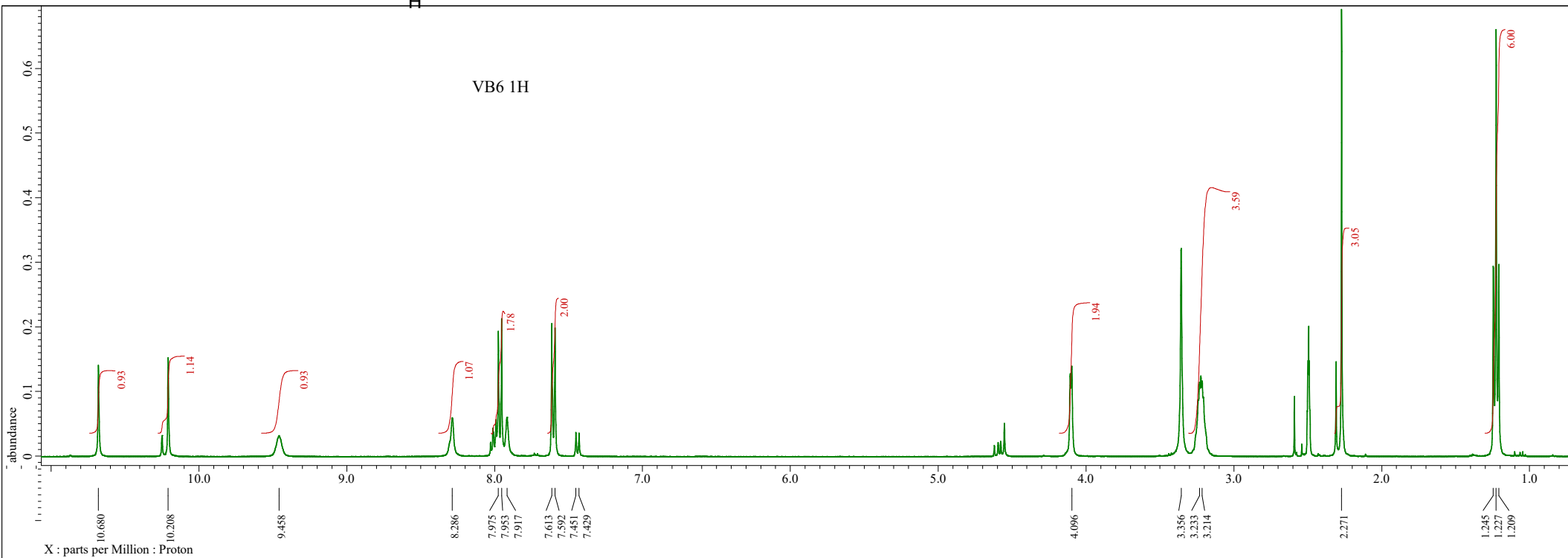
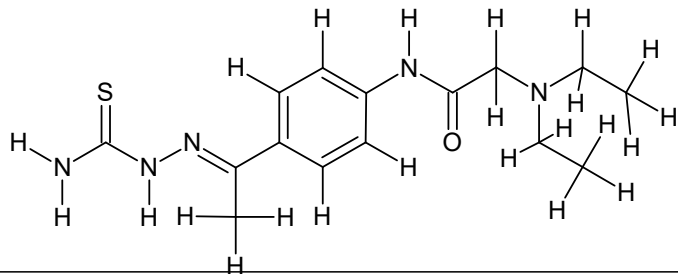




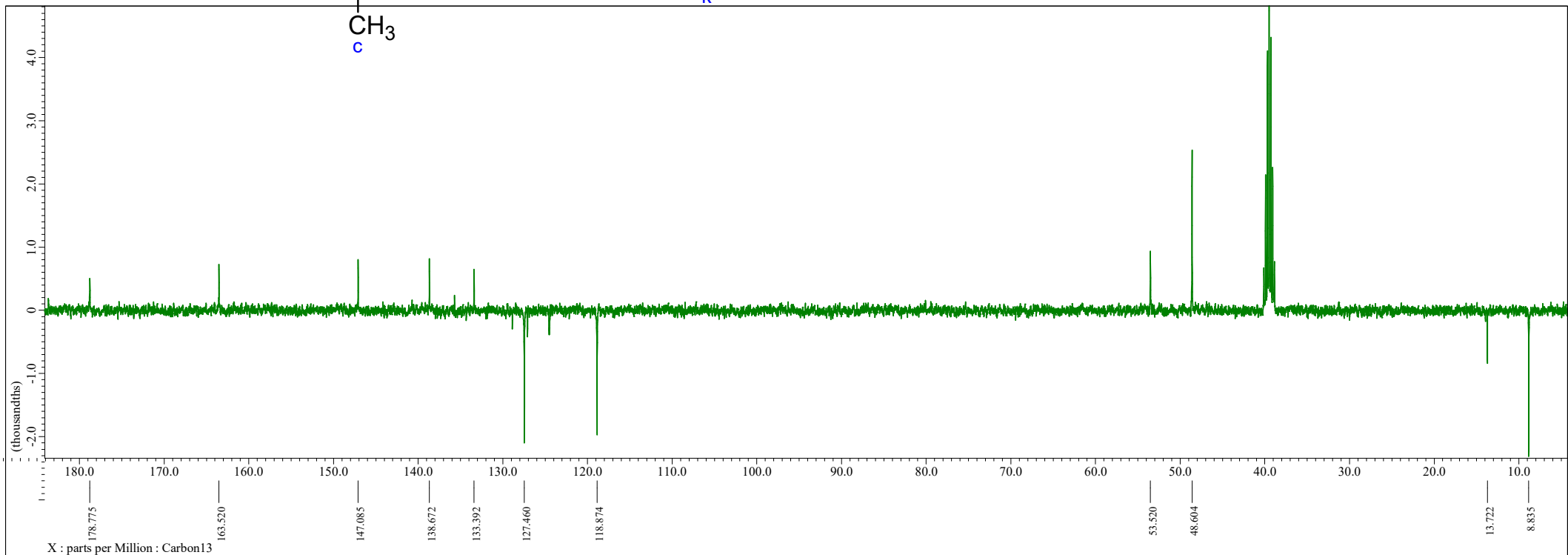
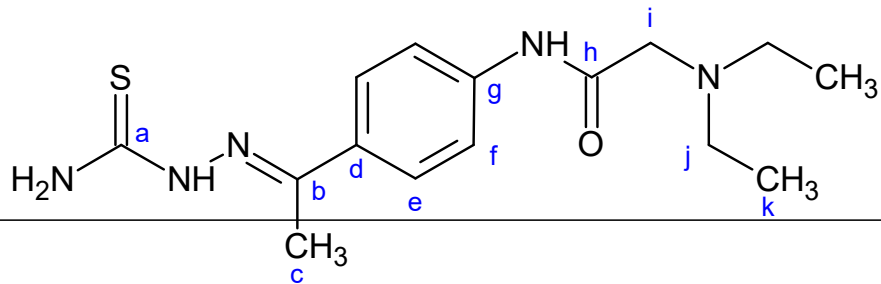
*N*-(2-methoxyphenyl)-2-chloracetamid,  $^{13}\text{C}$ -apt, 100 MHz,  $\text{DMSO-D}_6$



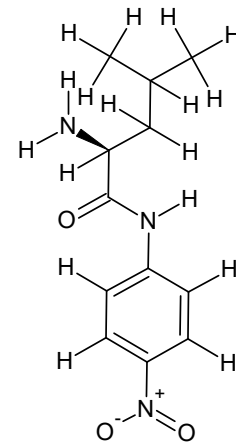
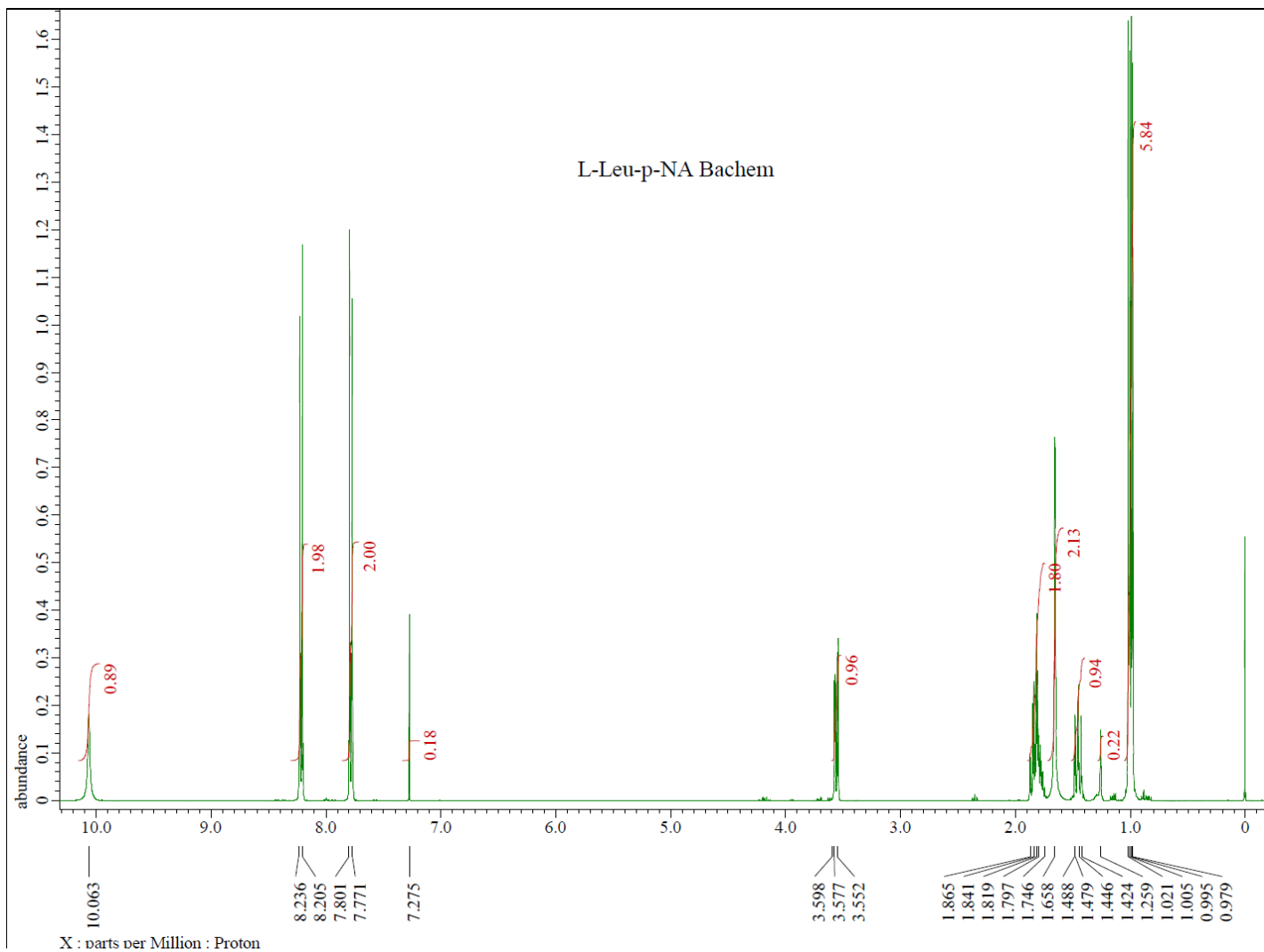
# 4-[2-(diethylamino)fenyl]acetofenon-thiosemikarbazon, $^1\text{H}$ , 400 MHz, DMSO- $\text{D}_6$



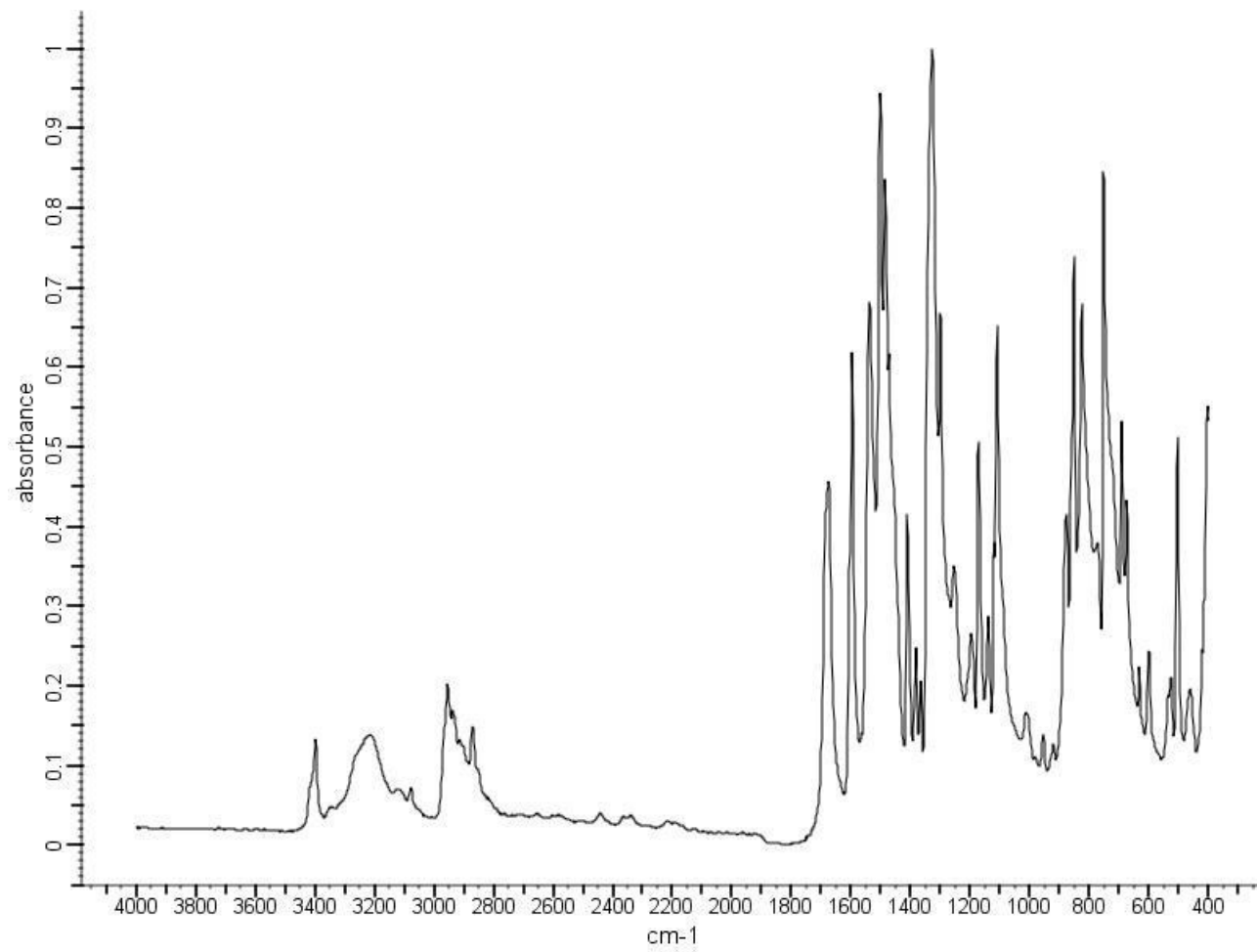
4-[2-(diethylamino)fenyl]acetofenon-thiosemikarbazon,  $^{13}\text{C}$ -apt, 100 MHz, DMSO-D<sub>6</sub>



# L-leucin-*p*-nitroanilid, $^1\text{H}$ , $\text{DMSO-D}_6$ , 400 MHz



# L-leucin-*p*-nitroanilid, IČ



# L-leucin-*p*-nitroanilid, H-H cosy, DMSO-D<sub>6</sub>, 400 MHz

