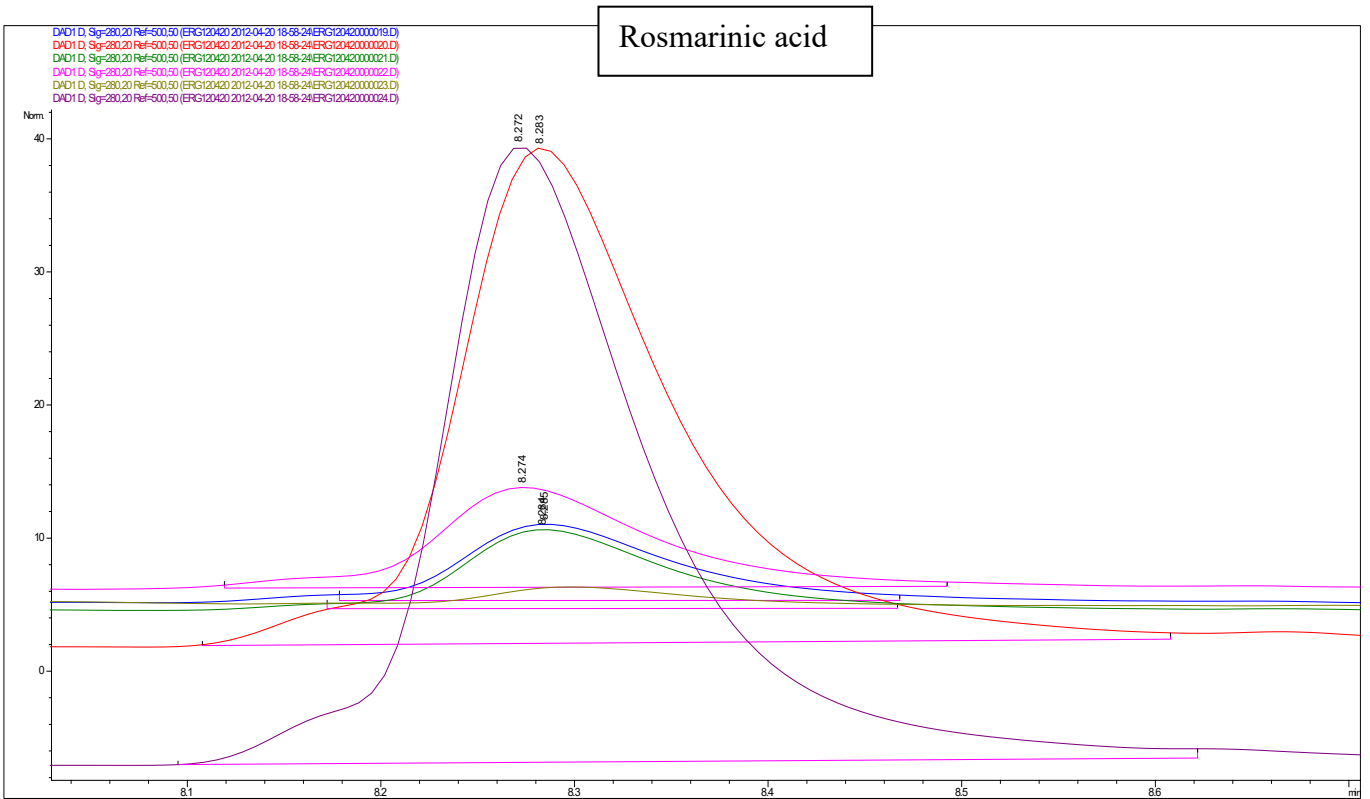
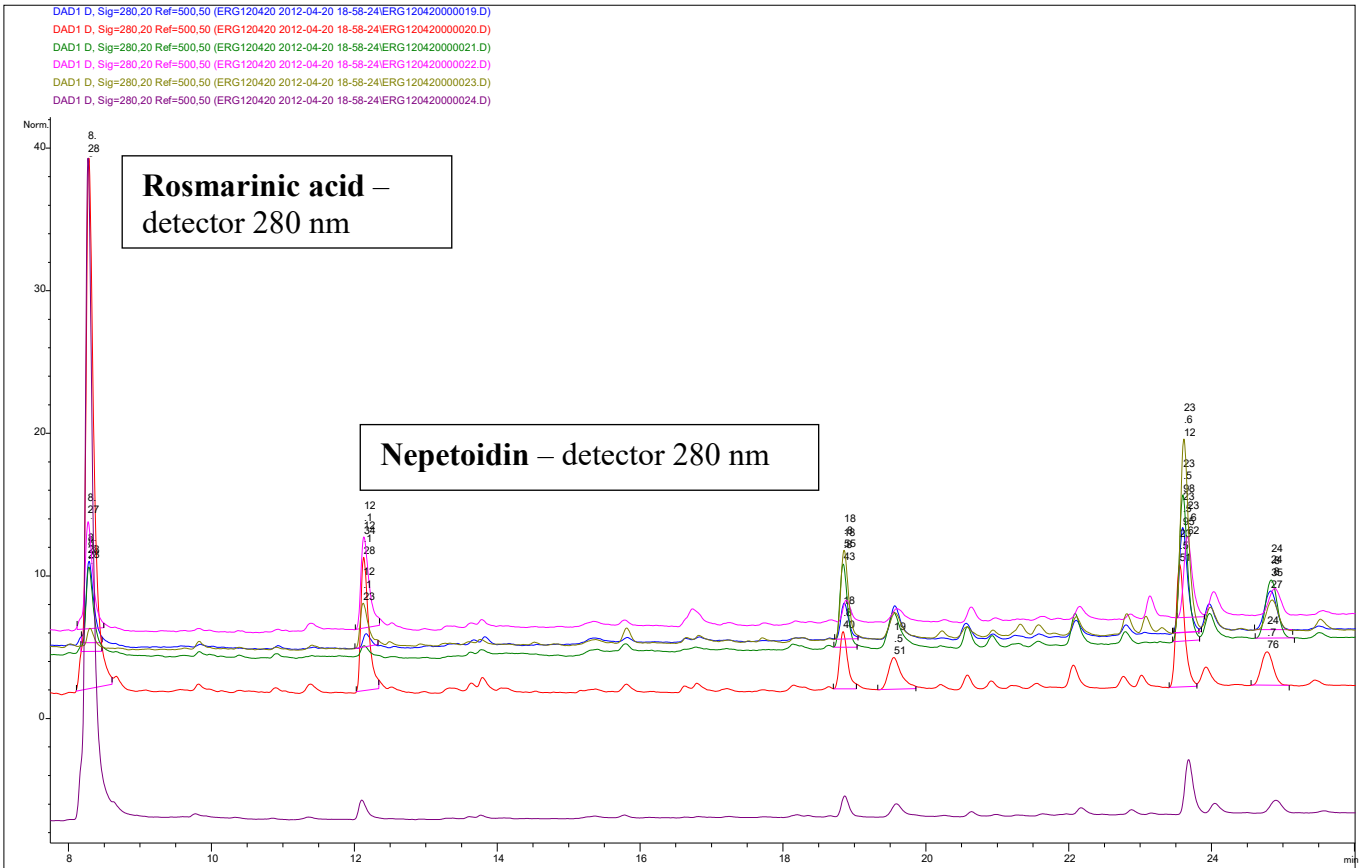
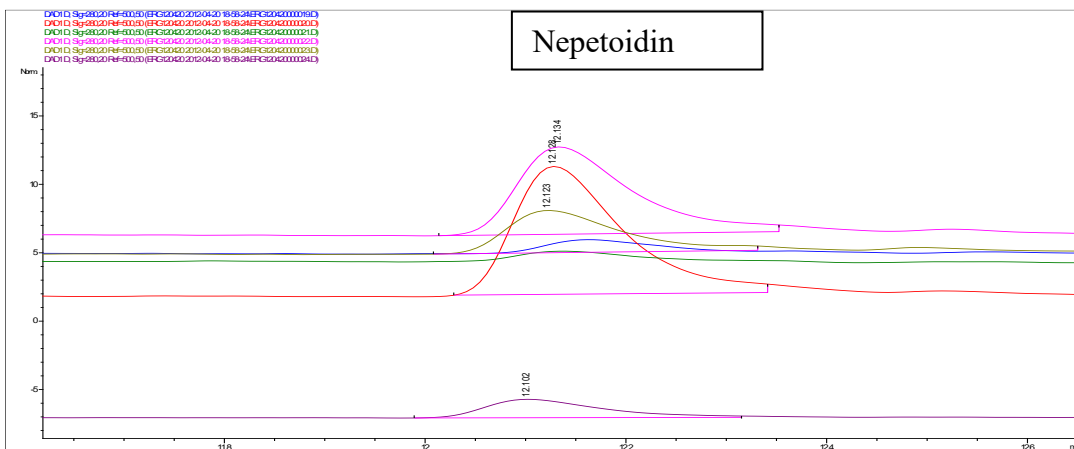
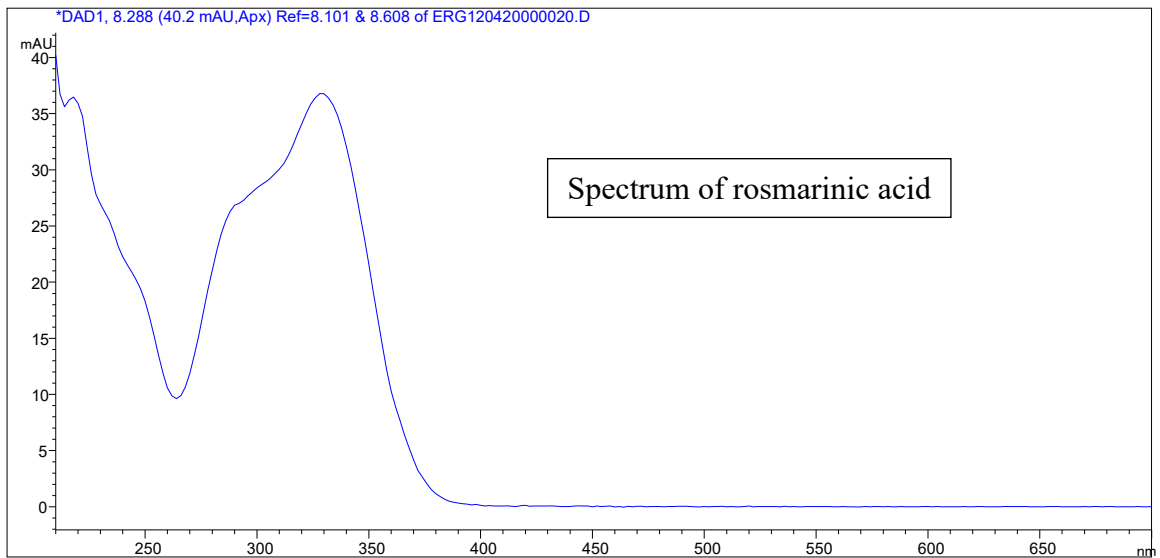


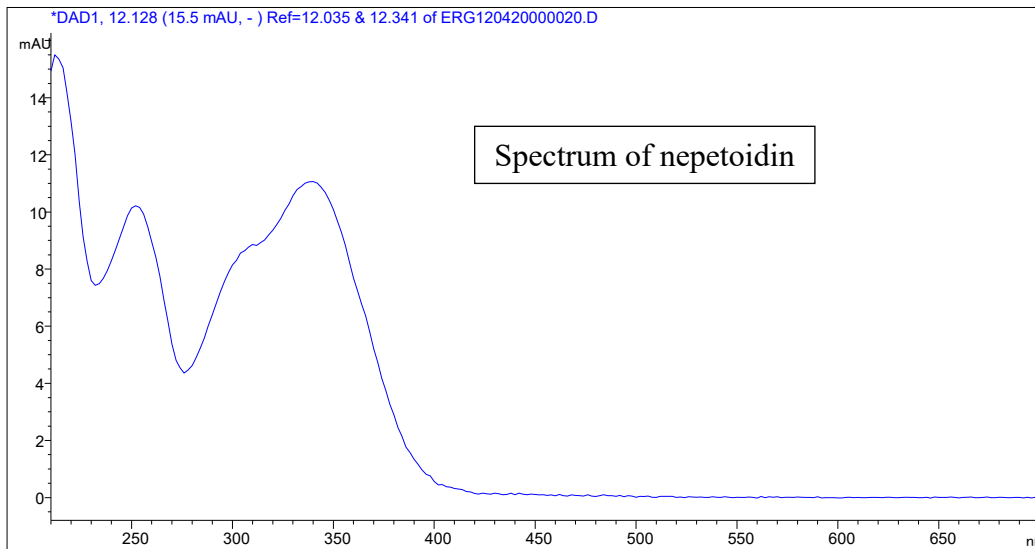
# Plectranthus forsteri – influence of different soil types



soil	Rosmarinic acid – peak areas – fresh material.
1	16,1
2	160,9
3	17,5
4	25,3
5	0
6	359,4



soil		Nepetoidin – peak areas – fresh material
	1	0
	2	39,1
	3	0
	4	21,4
	5	10,6
	6	10,9



**SUMMARY:** Production of secondary metabolites can be caused by stress (e.g. extreme pH, lack of hummus,...)

**TASK:** Calculate the relative concentration of rosmarinic acid and nepetoidin in dry mass and expressed it graphically.