

4.5 Bílá menzurální notace

Teoretické prameny:

Libellus cantus mensurabilis secundum Johannem de Muris (CS III, 58)

Prosdocimus de Beldemandis: Tractatus practice cantus mensurabilis (CS III,200)

Notační znaky

Menzura

Color

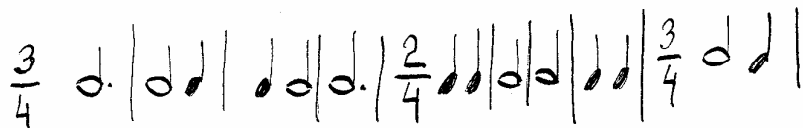
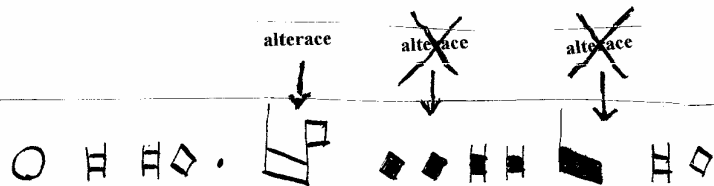
(color temporis, color prolotionis, poloviční color, color minor, color courantový, hemiola maior)

Proporce

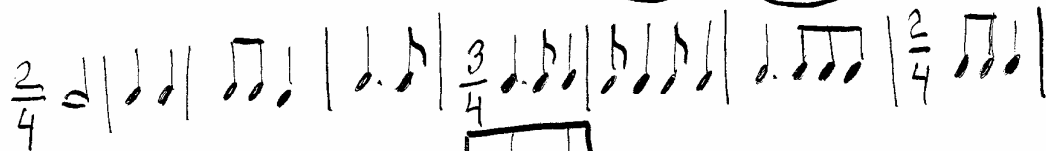
integer valor, genus multiplex, genus superparticulare, genus superpartiens, genus multiplex superparticulare, genus multiplex superpartiens, proportio dupla, proportio tripla, alla breve, diminuce, proportio quadrupla, proportio sesquialtera, proportio quintupla, proportio sesquitercia, menzurní kánon, proporční kánon)

Color 1

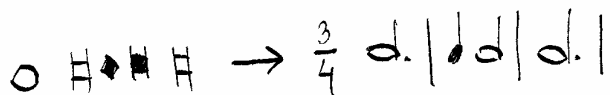
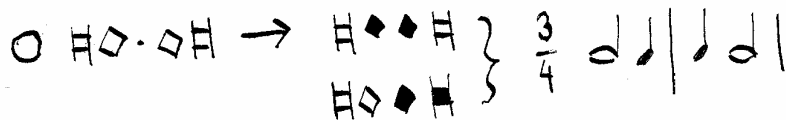
1)



2)

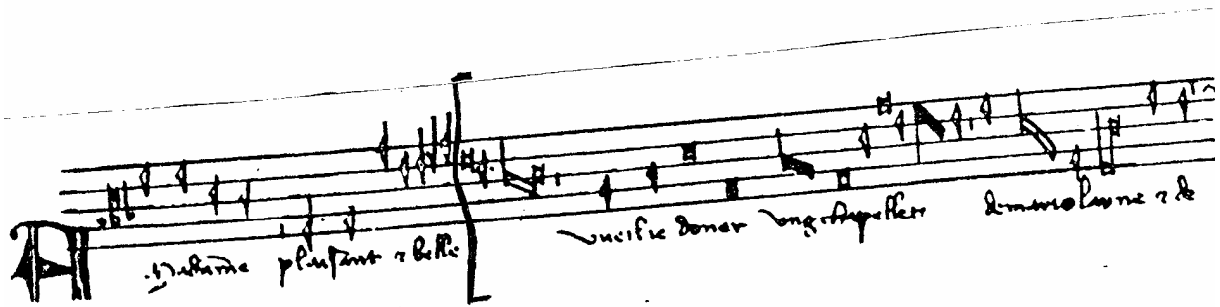


3)




Color 2

1.



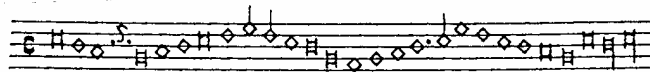
Handwritten musical notation on a five-line staff. The notation includes a treble clef, a key signature of one flat (B-flat), and a common time signature (C). The music consists of a series of notes and rests, with some notes beamed together. Below the staff, there are two lines of handwritten text in a cursive script: "Machina pluviana et bellis" and "vucifia doner unger. Apeller amano lorne et de".

2.



Handwritten musical notation on a five-line staff. The notation includes a treble clef, a key signature of one flat (B-flat), and a common time signature (C). The music consists of a series of notes and rests, with some notes beamed together.

3.



Handwritten musical notation on a five-line staff. The notation includes a treble clef, a key signature of one flat (B-flat), and a common time signature (C). The music consists of a series of notes and rests, with some notes beamed together.

Ex una uoce tres, ex eiusdē Io

docī Missa Lhomearme super uoces musicales.



Agnus Dei qui tolles peccata mundi nostri.

The image shows a musical score for guitar. It consists of three staves. The first staff begins with a large capital letter 'A' and contains the lyrics 'Agnus Dei qui tolles'. The second staff continues with 'lis peccata mundi' and 'miserere'. The third staff ends with 'no stri.' The music is written in treble clef with a key signature of one sharp (F#) and a 3/4 time signature. The notes are primarily quarter and eighth notes, with some rests. The lyrics are printed below the notes.

Authore Carolo Luyton.

II.

CANTVS II.

Yrie elei fon, Kyri-
c e leifon, Kyrie eleifon.

ALTVS I.

Yrie elei fon, Ky-
rie elei fon, Kyrie e-
lei fon, eleifon.

ALTVS II.

Yrie eleifon, Ky rie eleifon,
Kyrie elei fon.

BASSVS.

Yrie eleifon, Kyrie elei fon,
Kyrie elei fon, Kyrie eleifon.