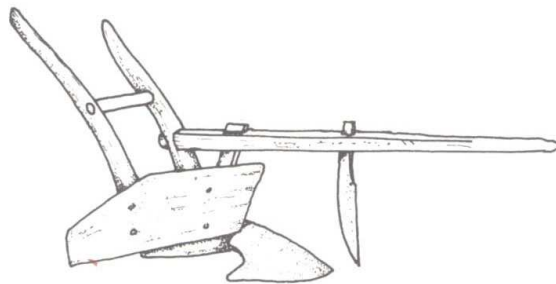
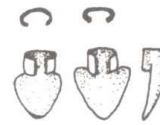
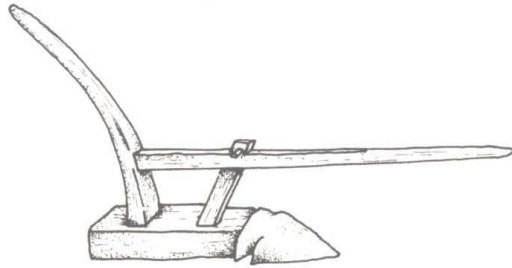
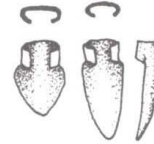
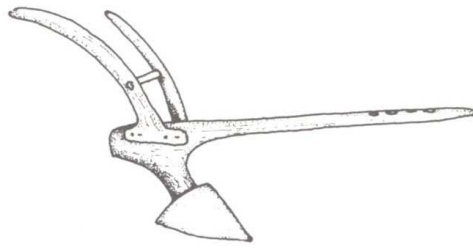


OREBNÍ NÁRADÍ

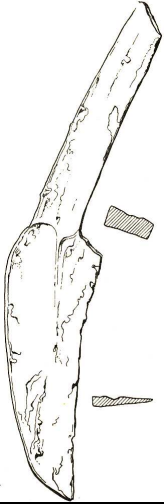
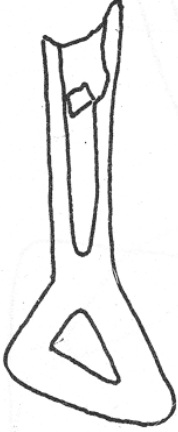
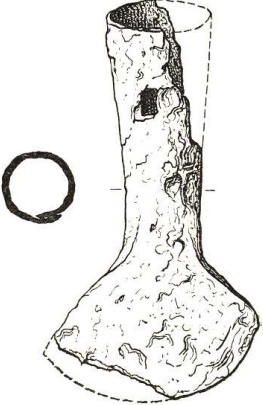


RADLICE

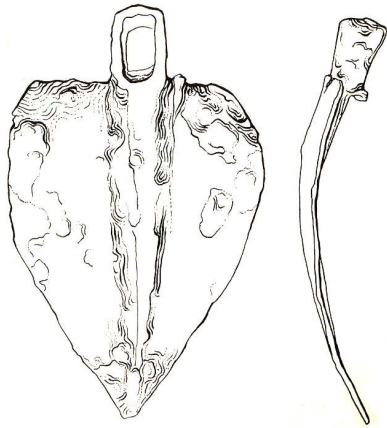


SYMETRICKÁ

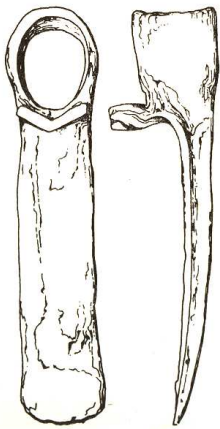
	<p>8. – 12. stol.</p>
	<p>ASYMETRICKÁ Počátek 14. století</p>
	<p>KOPINATÁ 15. století</p>
	<p>VESLOVITÁ 11. století</p>
<p>KROJIDLO</p>	

	<p>počátek 14. století</p>
<p>OTKA</p>	
	<p>Počátek 14. století</p>
	<p>15./16. století</p>

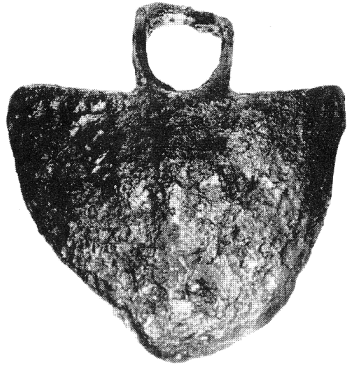
MOTYKA



**2. pol. 13. století
kratec**

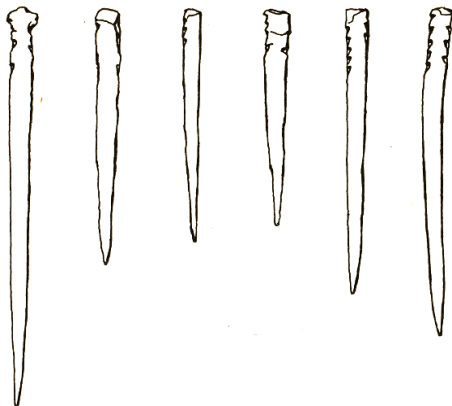


**poč. 14. století
klučovnice**

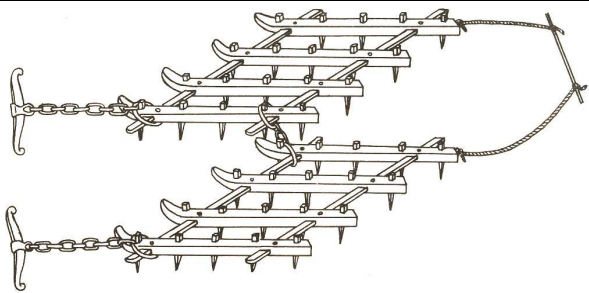


15. století

BRÁNY NA VLAČENÍ



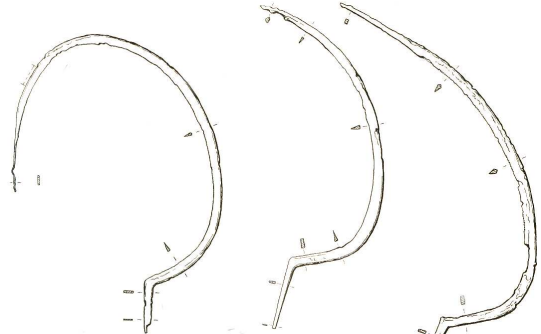



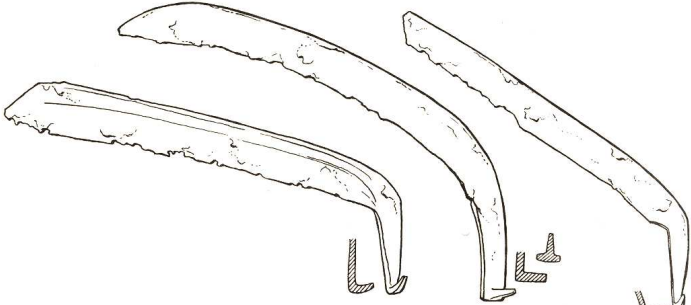
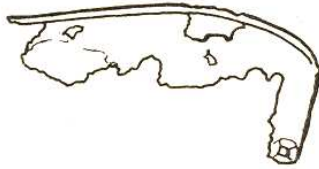
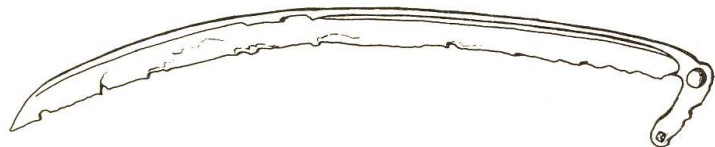
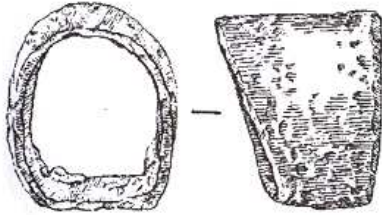
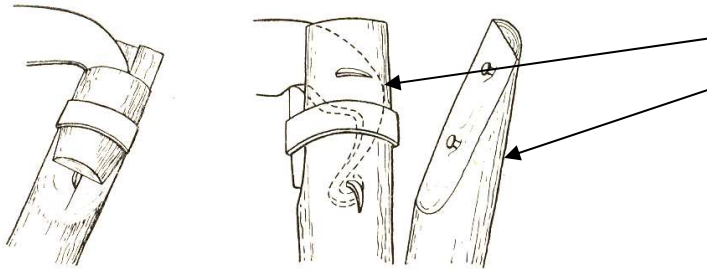
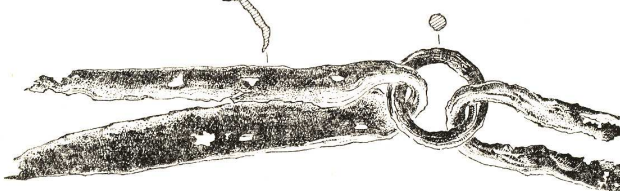
**Zub brány
Záseky v horní části těla proti
vypadnutí z konstrukce**



– funkční stav – vláčení pole

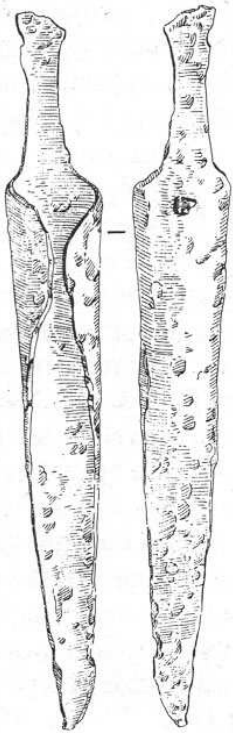
brány

SRP (části – rukojeť (- trn) a čepel (ostří, hrot))	datace
	<p>9. století</p>
	<p>11.-12.století</p>
	<p>13./14. stol.</p>
	<p>1. pol. 15. stol</p>

KOSA	datace
	9.stol.
	1. pol. 14. stol.
	15. stol.
Způsob nasazení kosa na kosiště	
	objímka kosa
	Nasazení kosa na kosiště trn kosiště
CEP	
	kování cepu

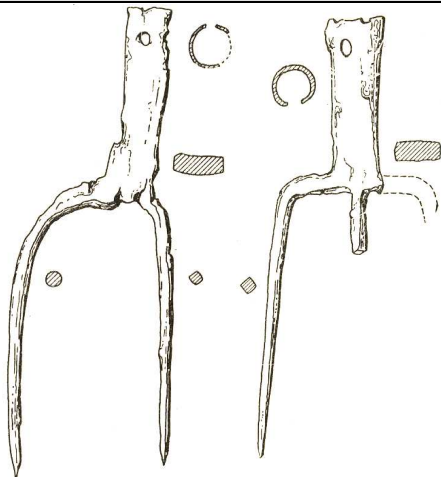
VIDLE

HROTY VIDLÍ



15. století

Celokovové vidle

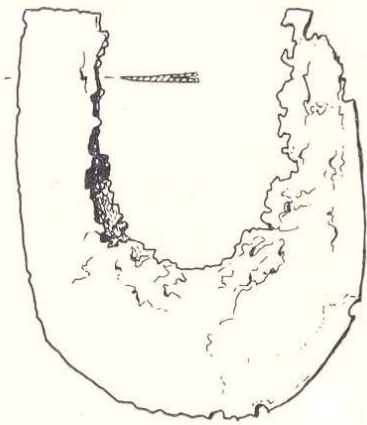


poč. 14. století



15. století

Rýč - lopata

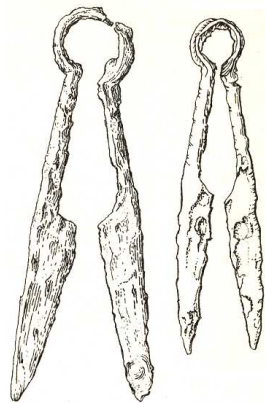


Poč. 14. století

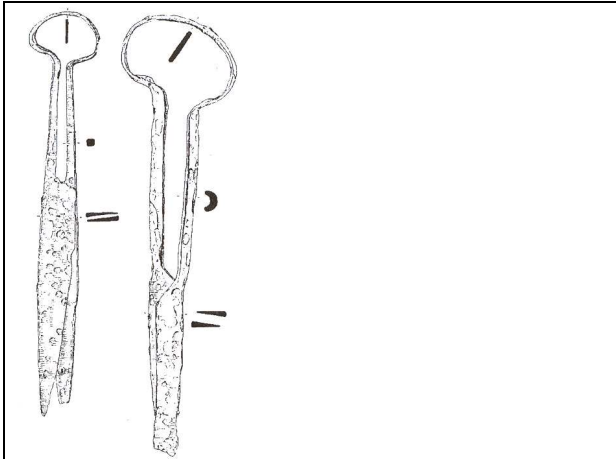
Pružinové nůžky - ovčácké



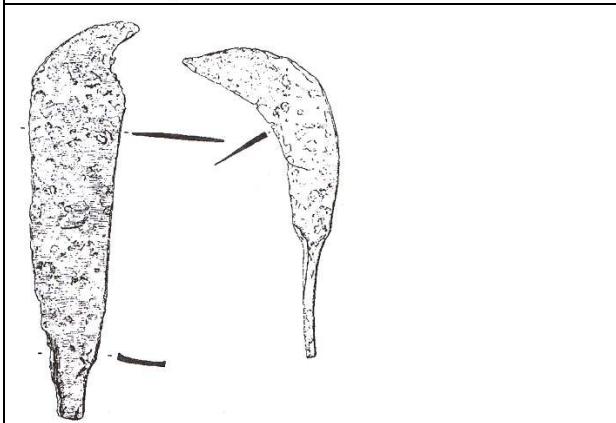
11. – 12. století



2. pol. 13. století



15. století



Vinařský nůž
14. – 15. století