

# Polsko a architektura renesance

# Vladislav Jagellonský v Budě a Visegrádu i Nyéku



Abb. 5 Buda, Burg, Balusterpfeiler mit dem Jagiellonen-Wappen (ex: Ausst.-Kat. Braunschweig 262).



Abb. 7 Nyék, Schloss, Fries mit dem Jagiellonen-Wappen

Pešť, Belvárošský kostel, tzv.  
Nagyrévi tabernákl, 1503-  
1506





Wrocław, katedrála,  
portál sakristie, objed.  
Jan V. Thurzo, 1517



Wrocław, Katedrála, náhrobek Jana V. Thurza, Andreas  
Walter st., 1537



Andrea Sansovino, náhrobek Ascania Sforzy, 1479,  
Řím, S. Maria del Popolo

Vídeň,  
Salvatorkirche, 1520



# Olomouc, radnice, portál, 1534





# Italové na polském královském dvoře

Franciscus Florentinus či Italus  
(od 1502 – do 1516)

Mistr Benedikt  
od 1516

Bartolomeo Berrecci z Pontassieve u Florencie –  
1517 - 1537

# Polsko-litevská unie: 1569-1795



Hrobka krále Jana Olbrachta  
Jagiella – 1502-05 na Wawelu





Benedetto da Rovezzano – hrobka  
Gonfaloniera Soderiniho,  
Firence, S. Maria del Carmine, kolem  
1509



- hrobka krále Jana Olbrachta Jagiella – 1502-05 na Wawelu,
- detail vlysu pilastru

Benedetto da Rovezzano – hrobka Ganfaloniera Soderiniho,  
Firencie, S. Maria del Carmine, kolem 1509

Hrobka krále Jana Olbrachta Jagiella – 1502-05 na Wawelu



Tarnów, náhrobek matky Jana  
Tarnowského – Barbary z Roznówa –  
po 1517

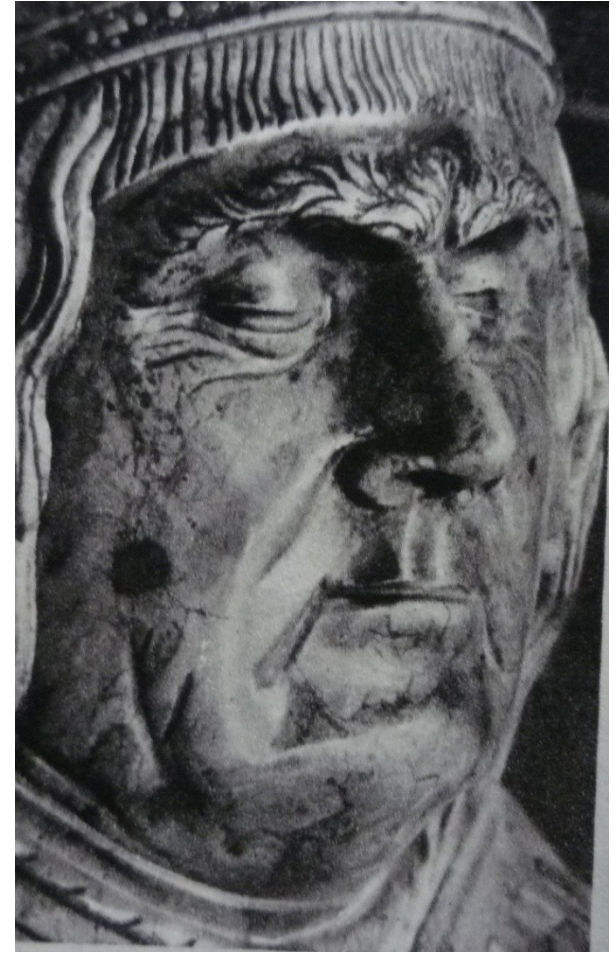


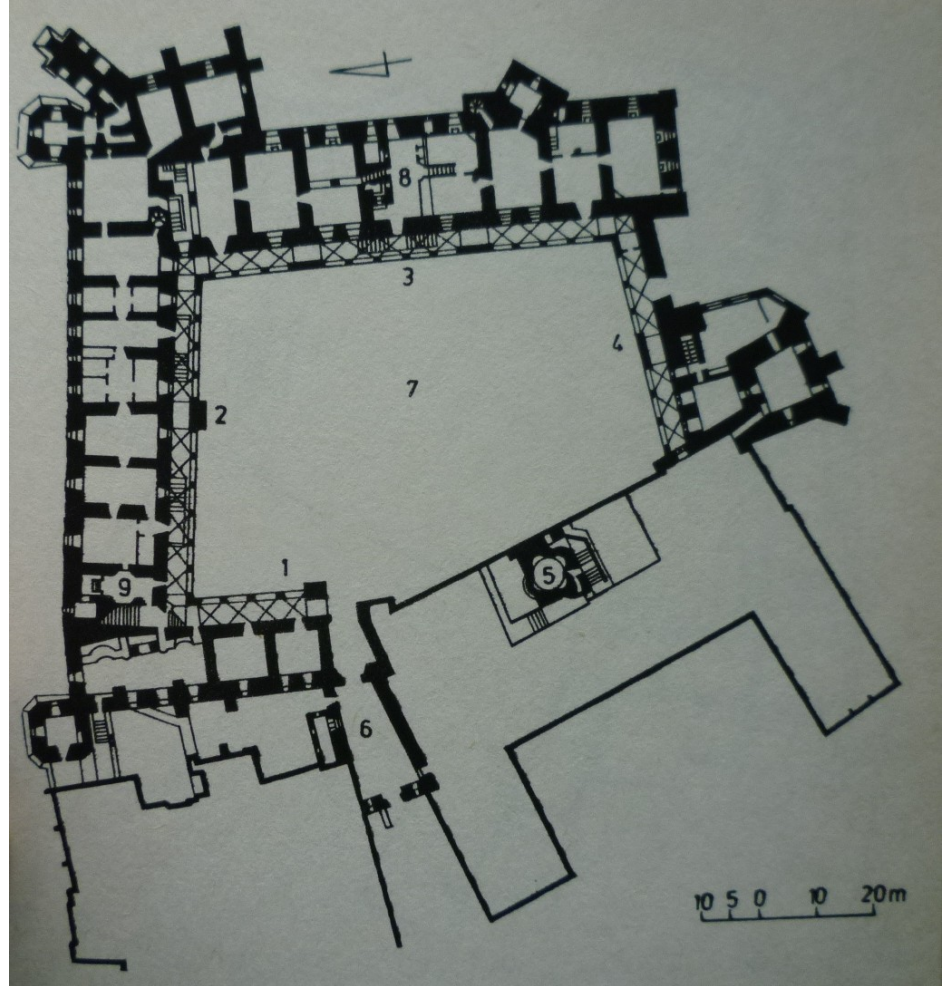
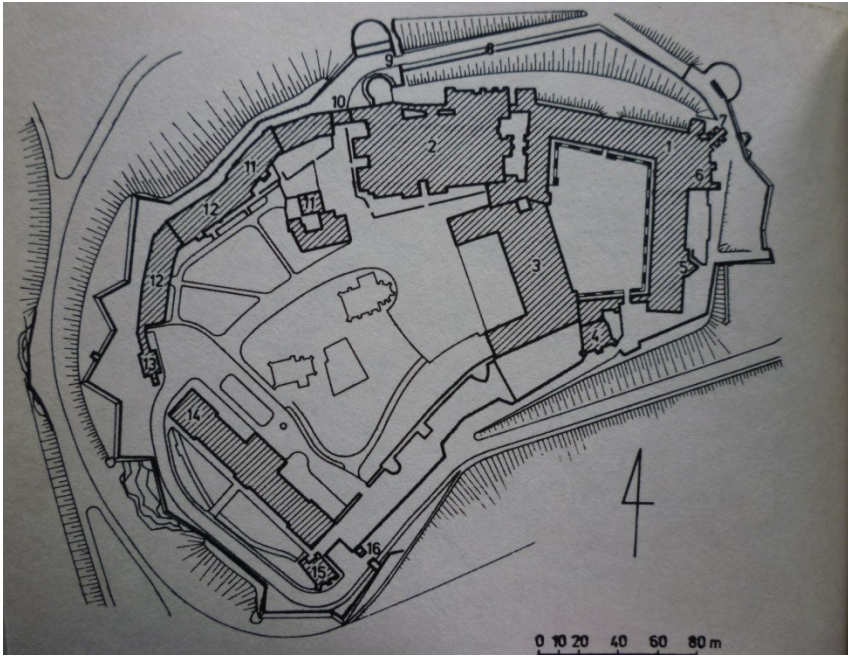
# Krakov, Wawel





# Zikmund Jagellonský





Krakov, Wawel, královský palác, 1507-1536



## Palác královny Alžběty, 1502-1506



Tabernákly z Pécse,  
po 1500  
(katedrála, farní kostel)

a

vlys z dílny Francesca Fiorentona z Wawelu



13 Tabernacle of George Szathmáry. Pécs, Cathedral

53 Franciscus Florentinus's workshop: Tendril ornament from a window frame. Cracow, Wawel State Art Collections (Lapidarium)



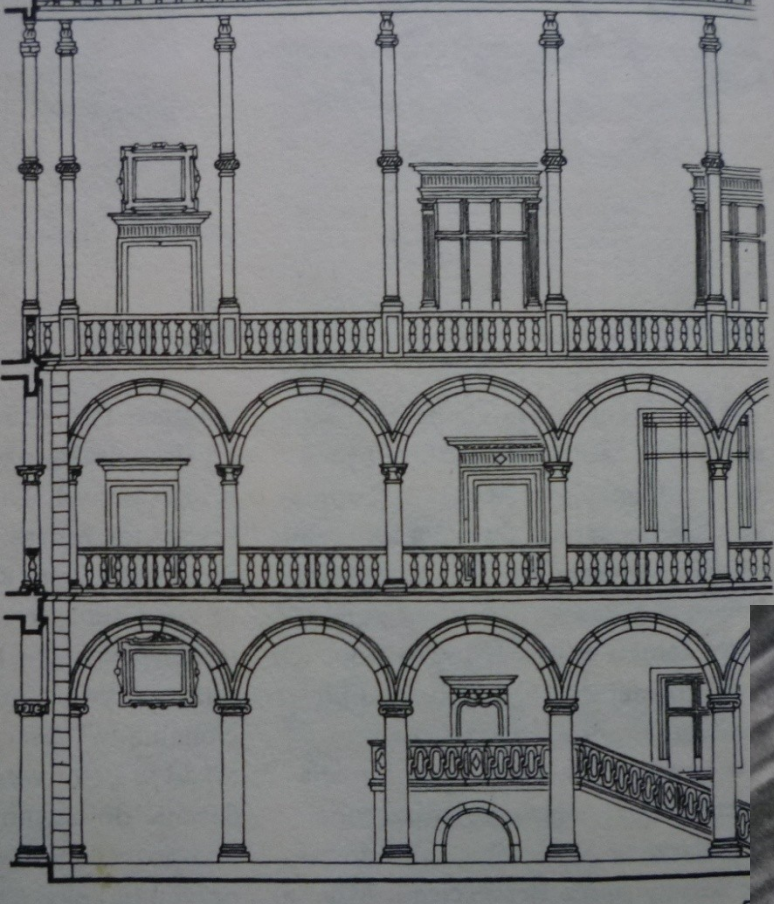
Wawel, královský  
palác, přestavba a  
arkády  
1502-1540











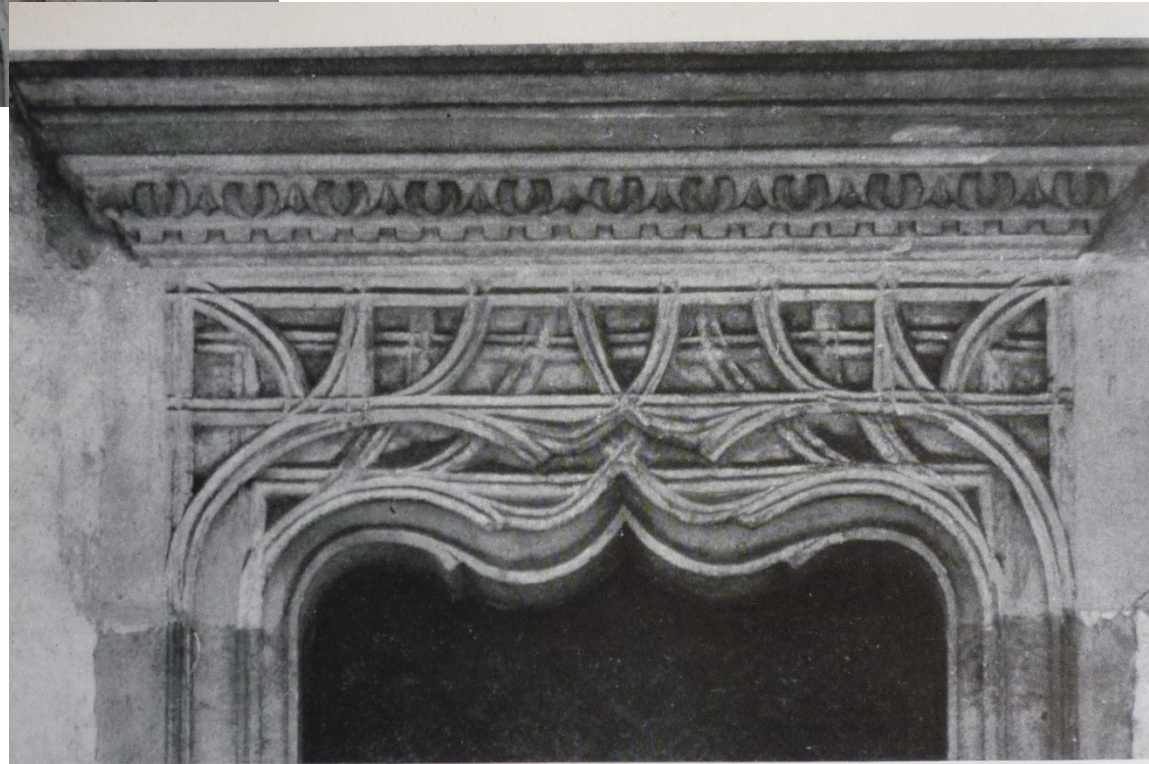


63 Portal of the 'Wawel-type' combined with the window. Cracow, Wawel Castle

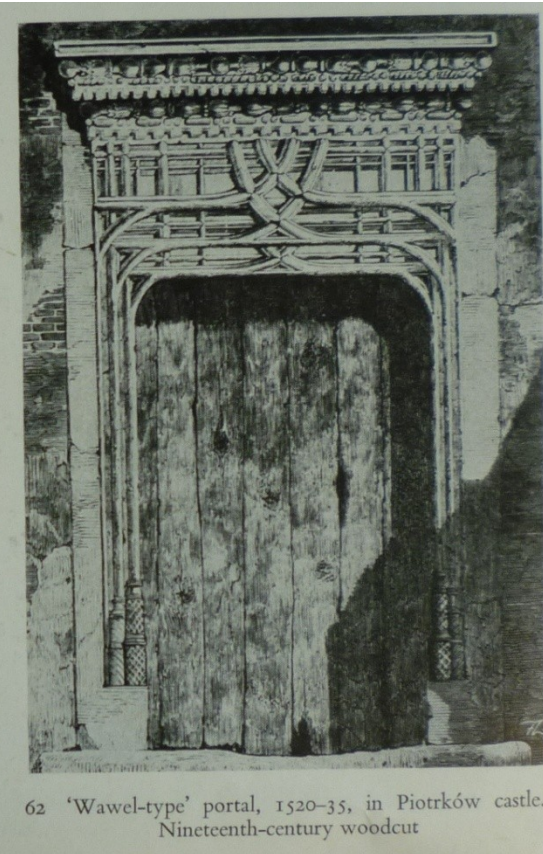
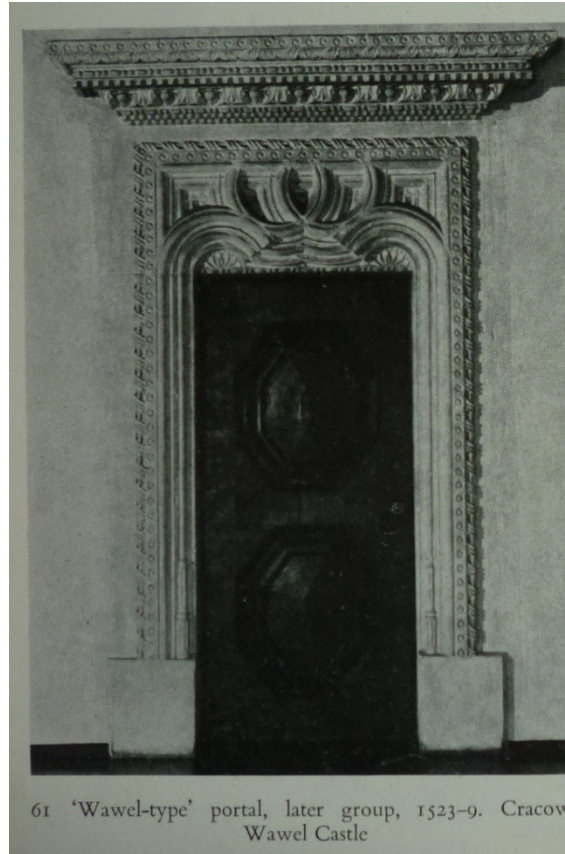
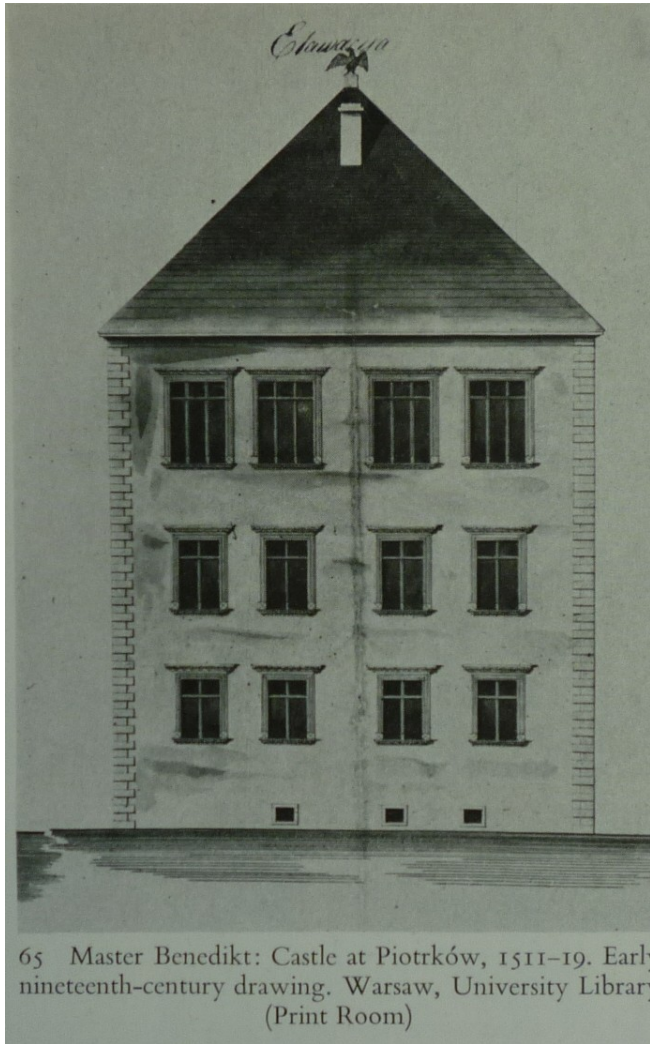


64 Columns of the upper floor arcade, capitals and coffered ceiling. Cracow, Wawel Castle





# Mistr Benedikt – Piotrków – rezidence pro krále Zikmunda 1511-19









5. Praha, Hrad, Ludvíkovo křídlo, portál; před 1509



6. Praha, Hrad, Ludvíkovo křídlo, portál v prvním patře; před 1509



# Wawel, audienční sál, po 1518





# Hans Dürer



Zámek Brzeg (Břeh)  
Frederick II. a Jiří II. vévoda lehnicko-březský  
Georg z Ambergu; rodina Parrů či Parrio, Andreas Walther



## Brzeg, portály, po 1536



80 Portal between the rooms of the ground floor, 1536, of the castle at Brzeg (Brieg)



81 Portal between the rooms of the ground floor, 1536, of the castle at Brzeg (Brieg)



Legnica, brána zámku lehnických  
Piastovců,  
Georg (Jerzy) z Ambergu, 1533

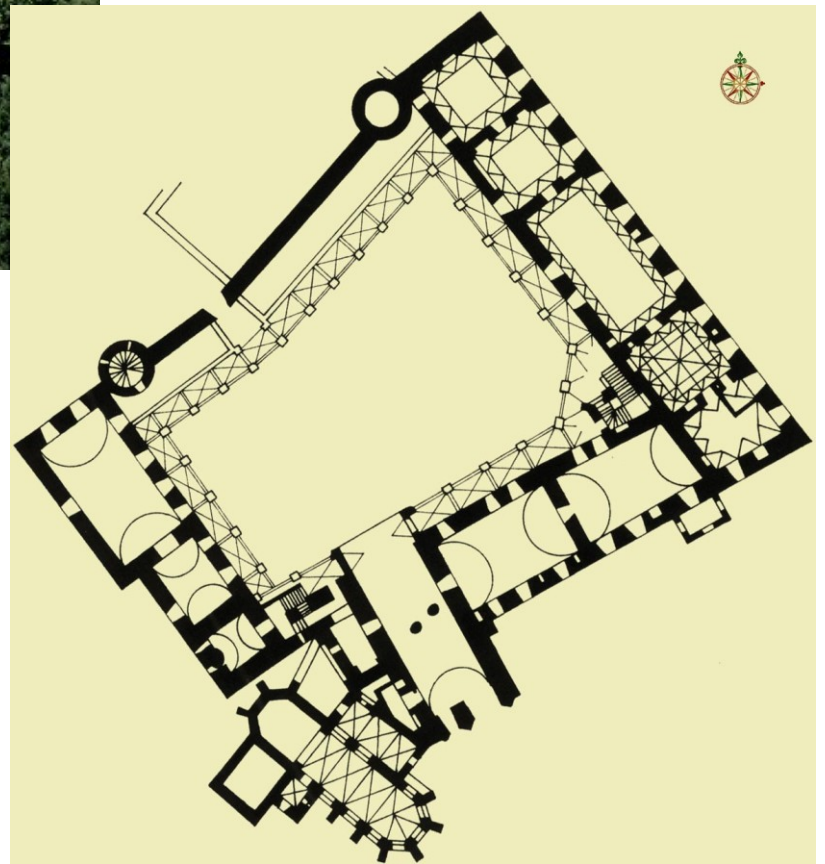


fot. Bartosz Jastrzębski, 2006



Brzeg - zámek











© Bartosz Jastrzębski, 2005

Chojnów, zámek, vstup, pro Fredericka III  
– 1546-57, Andreas Walther



86 Castle façade, 1546-7. Chojnów (Haynau)



87 Allegorical figure of Water. Detail of decoration on the gatehouse (Fig. 84) of

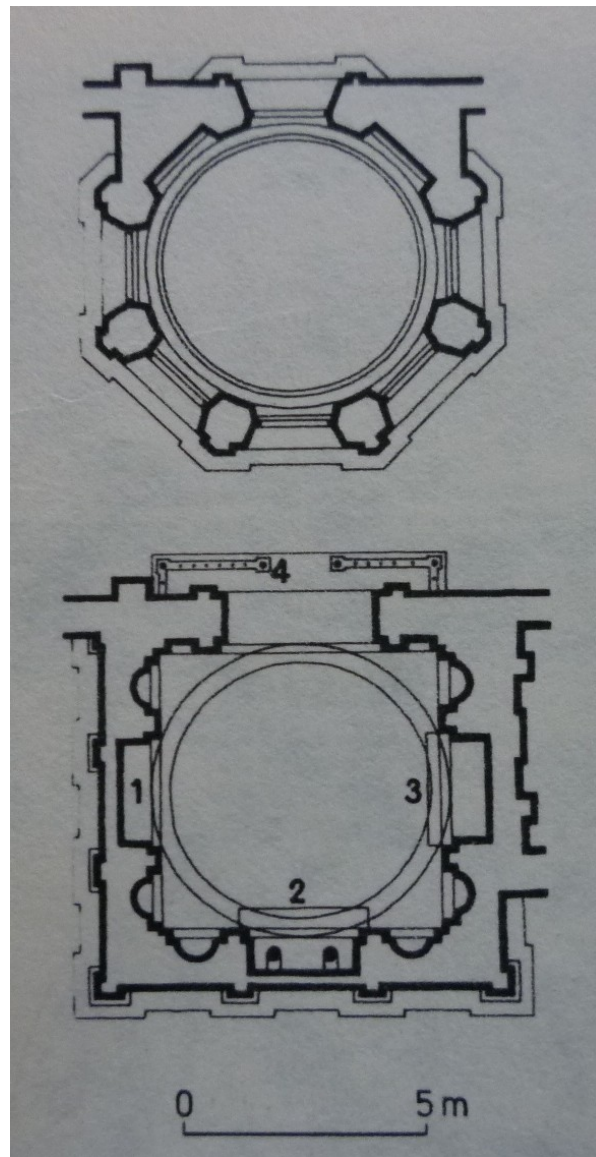
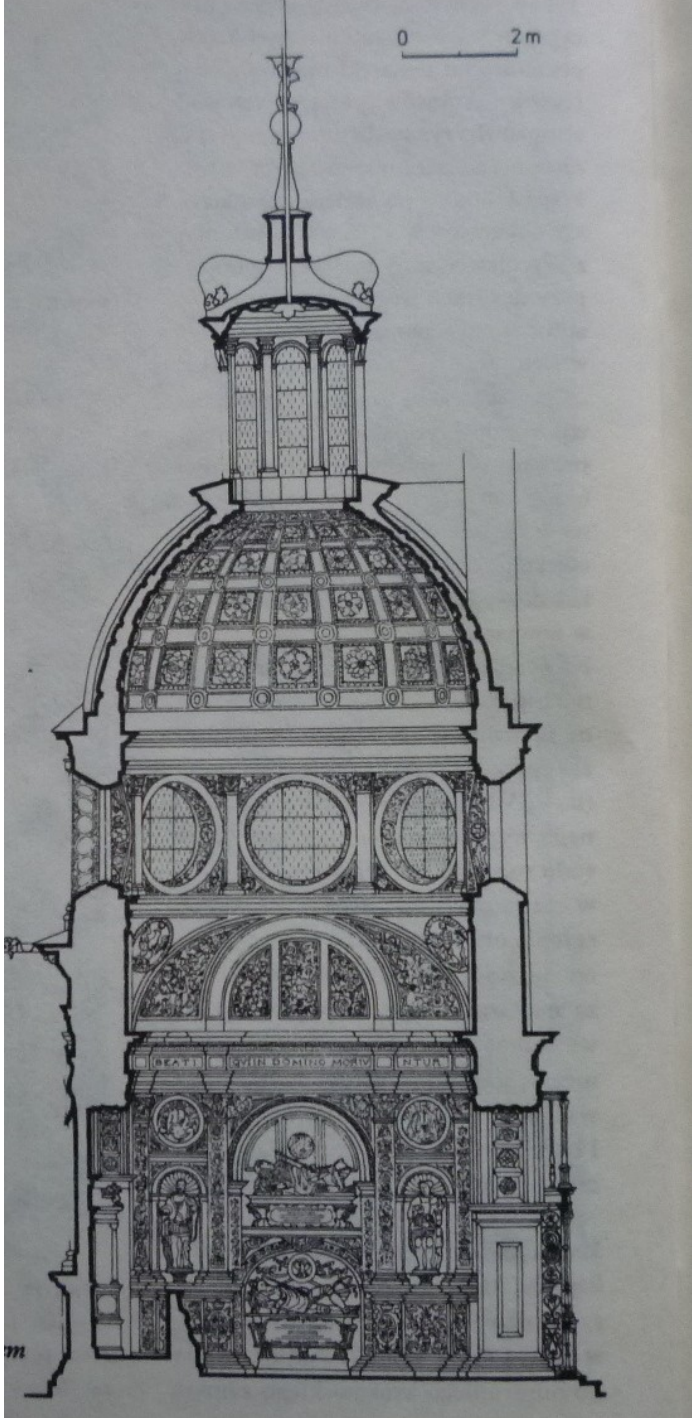
# Jezuitský kostel sv. Michala v Mnichově, po 1580

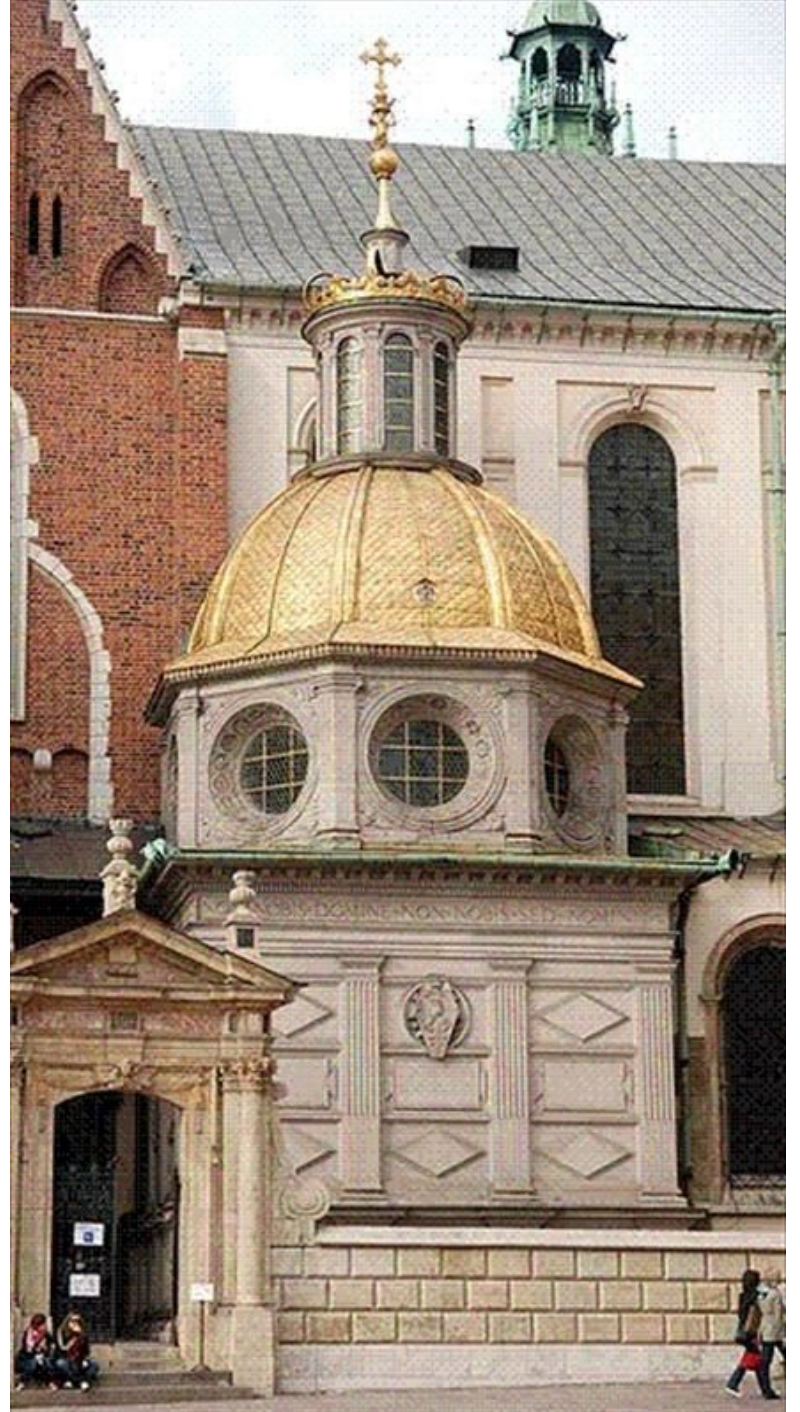


Krakov, Wawel, Zikmundova kaple, Bartolomeo Berecci,  
1517-1533



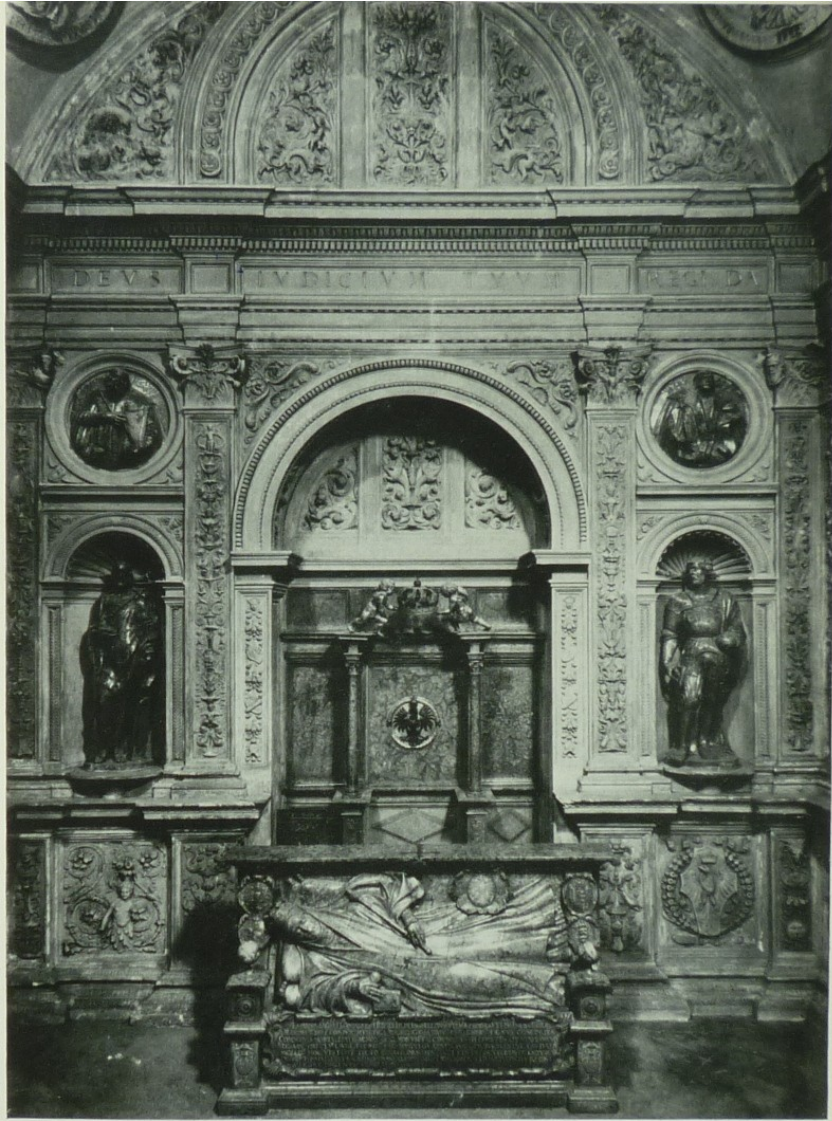










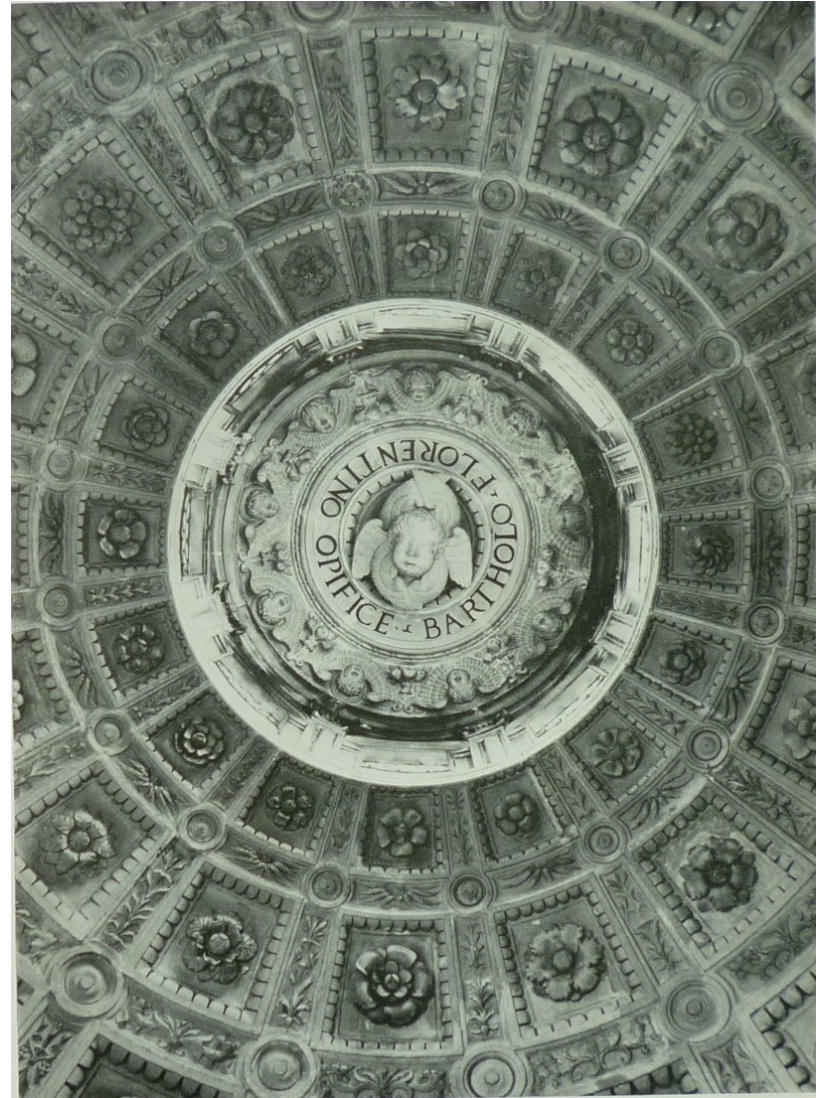
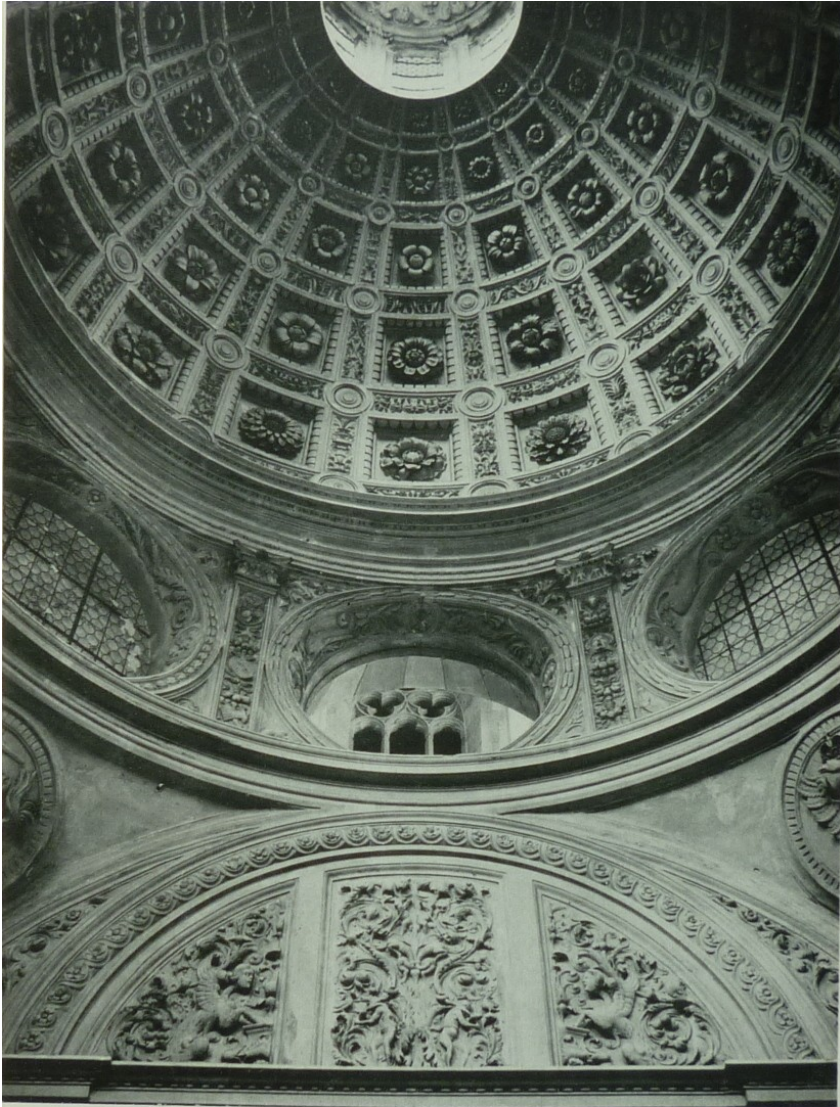


103 Bartolommeo Berrecci: Sigismund Chapel. Interior towards the royal throne. Cracow, Wawel Cathedral



104 Bartolommeo Berrecci: Sigismund Chapel. Corner of the royal throne wall and the tomb wall.







107 Bartolommeo Berrecci or his workshop: King Solomon relief. Cracow, Wawel Cathedral, Sigismund Chapel

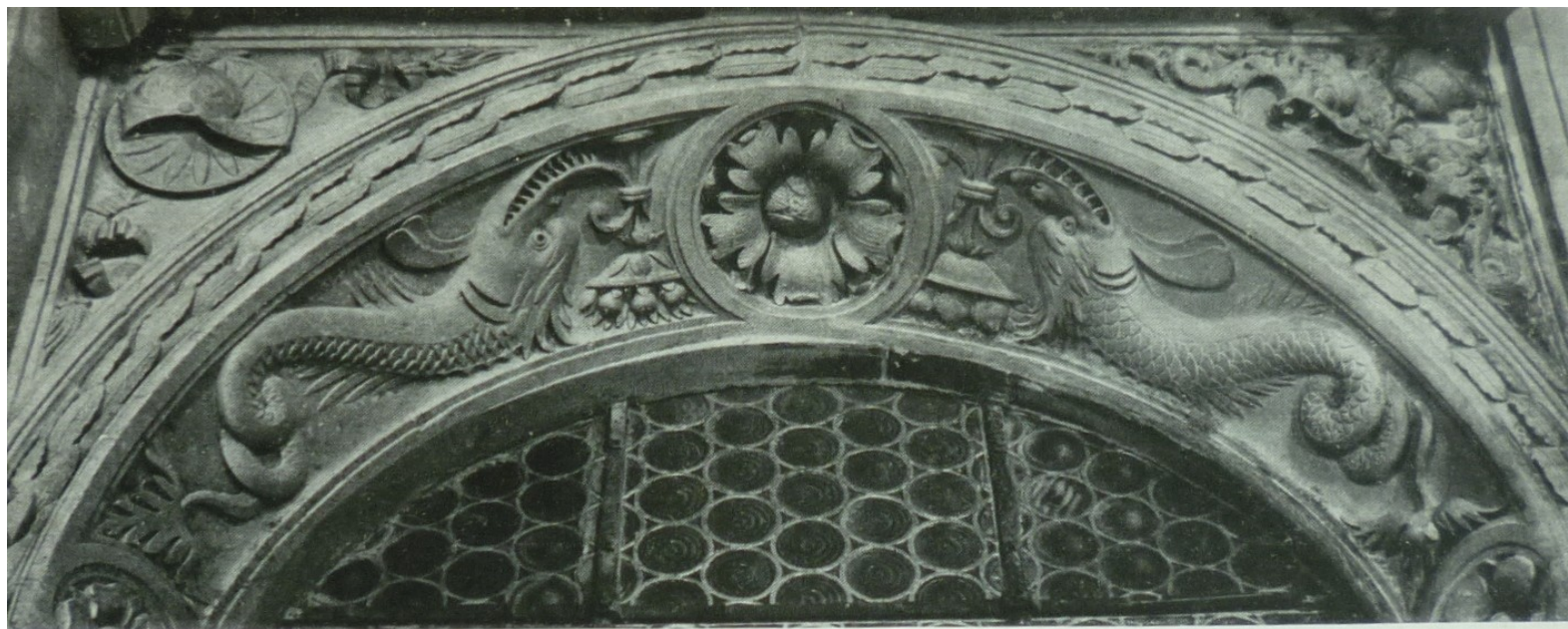


his workshop: King David relief. Cracow, Wawel Cathedral, Sigismund Chapel





109 Bartolommeo Berrecci and his workshop: Tympanum above the entrance wall (with Adam and Eve). Cracow, Wawel Cathedral, Sigismund Chapel





112 Bartolommeo Berrecci and his workshop: Triton and nereid. Field to the right in the tympanum above the throne wall. Cracow, Wawel Cathedral, Sigismund Chapel



115 Roman sarcophagus with tritons and nereids, beginning of third century A.D. Rome, National Museum



116 Roman sarcophagus with tritons and nereids, first to second century A.D. Boston, Museum of Fine Arts





118 Bartolommeo Berrecci: Venus Anadyomene (?). Tympanum above the altar wall. Cracow, Wawel Cathedral, Sigismund Chapel







Hrobka Sigmunda Vasy, kolem 1610





B. Berrecci, kaple Piotra  
Tomického na Wawelu, kolem  
1539

# biskup Andrzej Krzycki – přestavba katedrály v Płocku, po 1530 Italové z okruhu wawelské huti

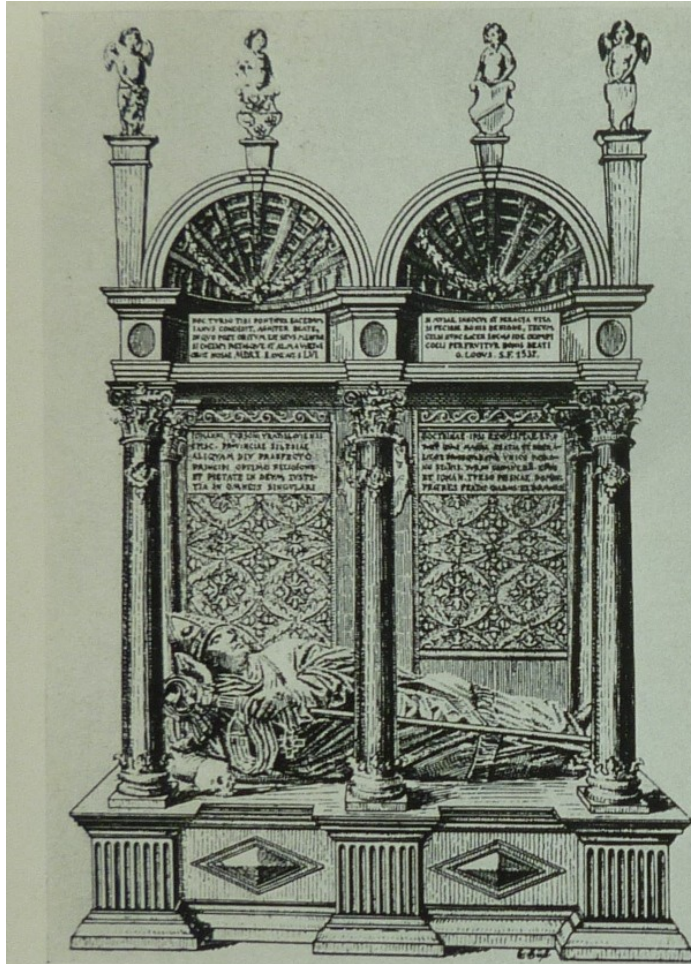


Náhrobek Jana Rybische ve  
Wroclawi. kostel sv. Alžběty, 1539



Náhrobek biskupa Jana Thurza ve wroclawské katedrále, 1537 Andreas Walther -architektura

Náhrobek biskupa Balthasara von Promnitz, 1562, Nisa, sv. Jakub



142 Tomb of Jan V Turzo, Bishop of Wroclaw, 1537. Figure by an unknown artist, architecture by Andreas Walther I. Wroclaw, Cathedral (after H. Lutsch)

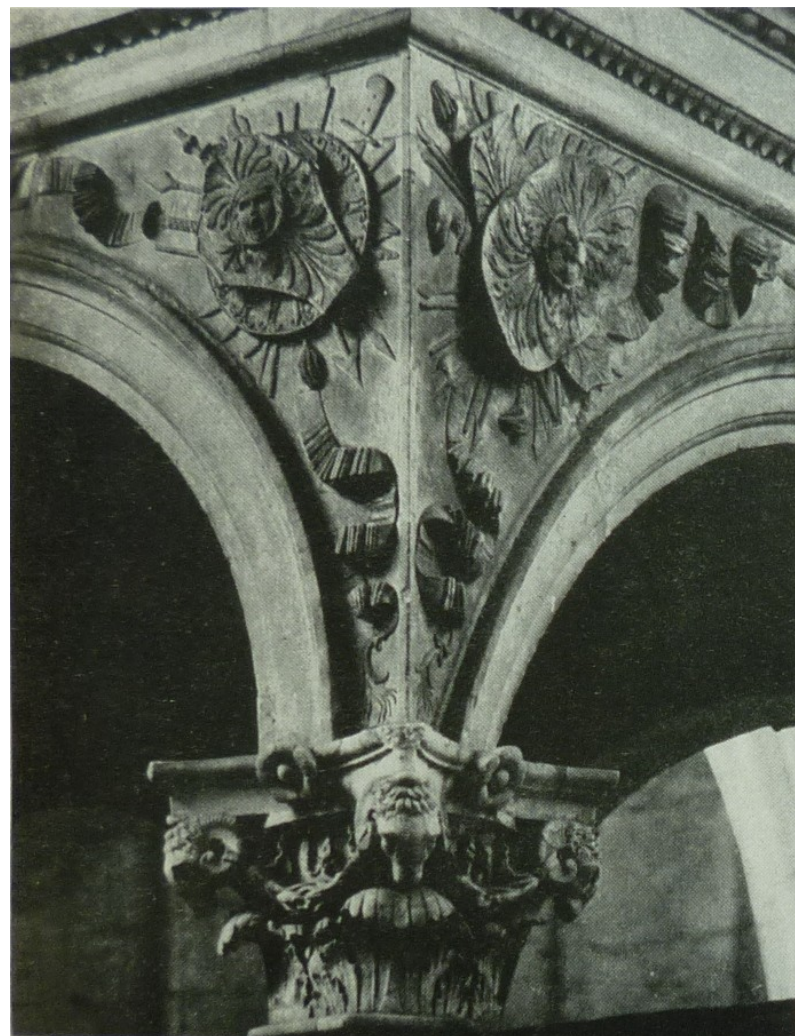


143 Tomb of Balthasar of Promnitz, after 1562. Nysa (Neisse), St Jacob's Church

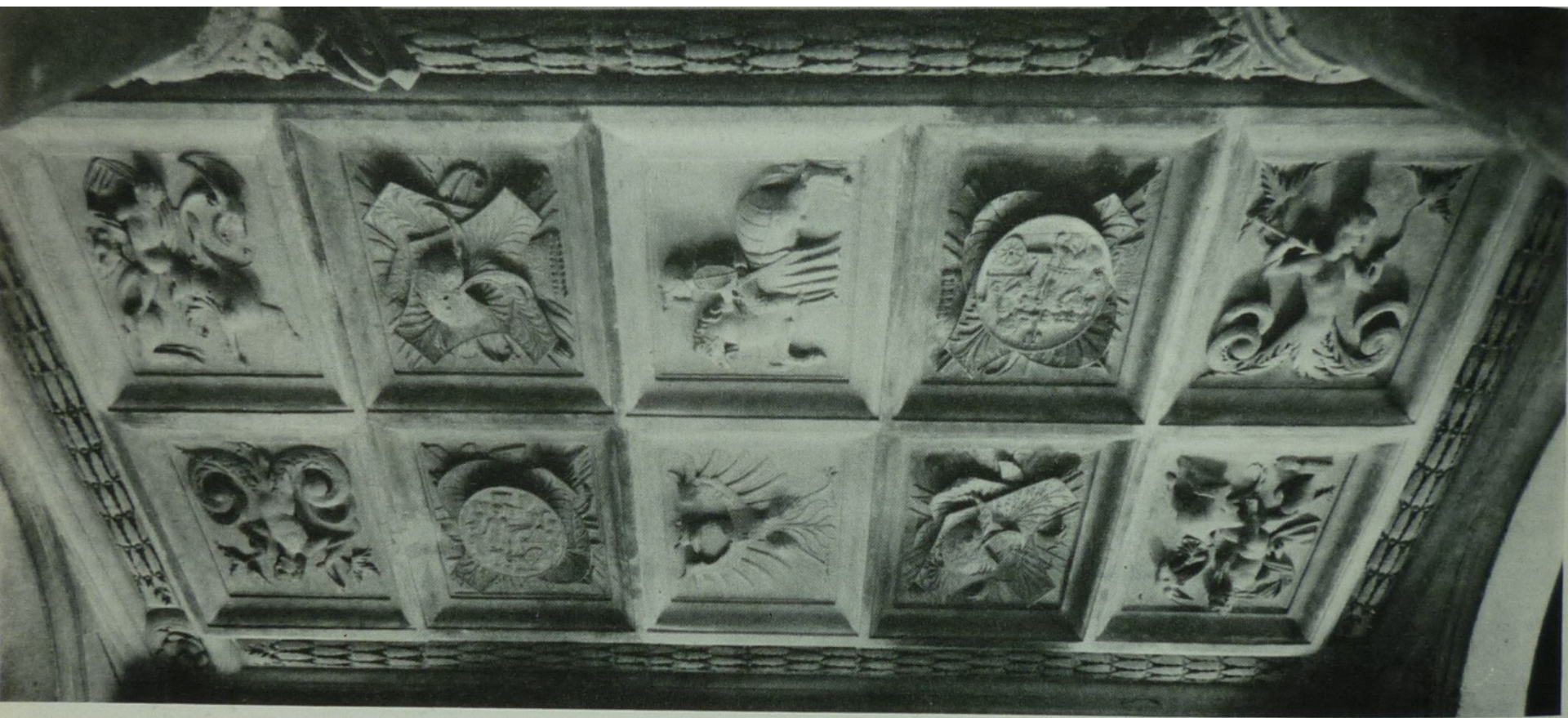
# B. Berrecci, baldachýn náhrobku Vladislava Jagellonského, katedrála, Wawel, 1519-1524



145 Bartolommeo Berrecci, Giovanni Cini and assistants: Canopy above the Gothic tomb of King Wladyslaw Jagiello, 1519-24. Cracow, Wawel Cathedral







146 Ceiling of the canopy of the Władysław Jagiełło tomb (detail of Fig. 145)

B. Berrecci, náhrobek biskupa Jana Konarskiho, 1525 Wawel, katedrála



149 Bartolommeo Berrecci (?): Tomb of Jan Konarski (1521). Cracow, Wawel Cathedral



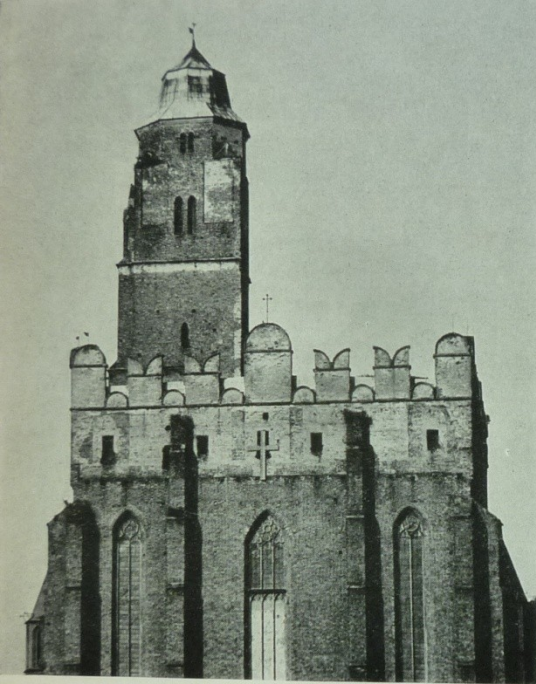
Jan Michalowicz, náhrobek biskupa  
Andrzeje Zebrzydowského, 1563 –  
Wawel

Dům u Zlaté Koruny ve  
Wroclawi, 1521-28

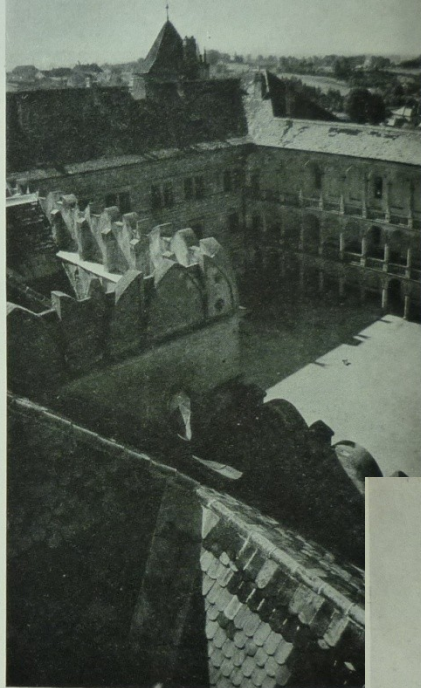




229 Benedikt Ried: Castle at Ząbkowice (Frankenštejn), 1522–32

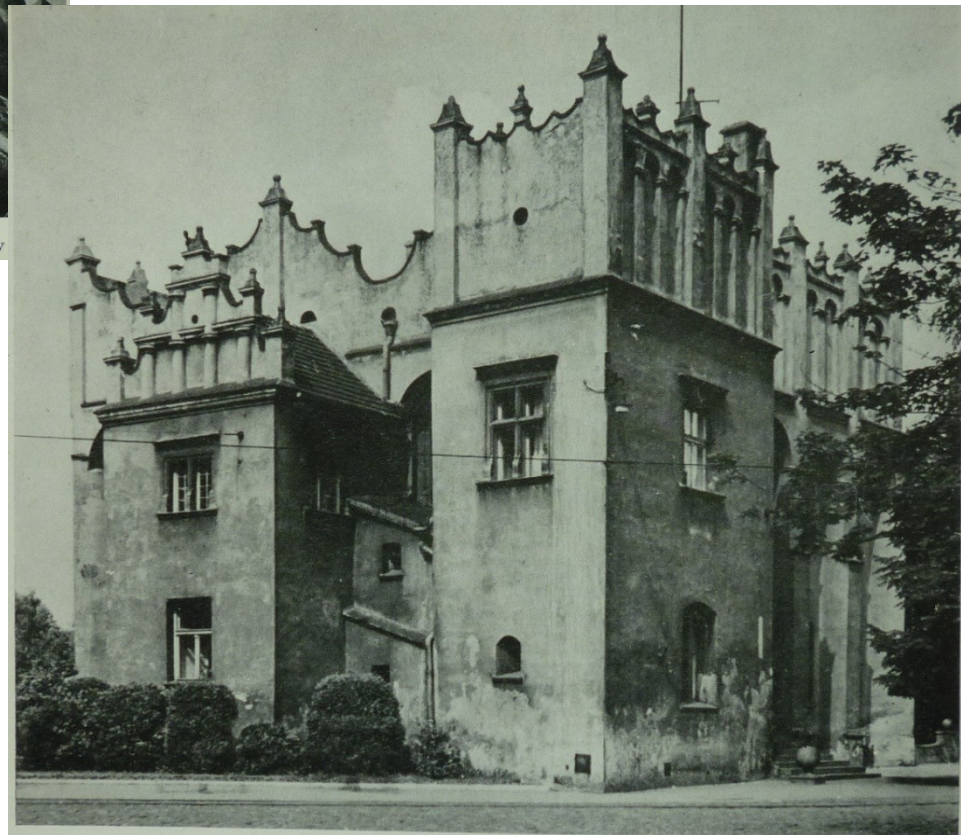


230 Parish church with parapet, 1529. Paczków (Patschkau)



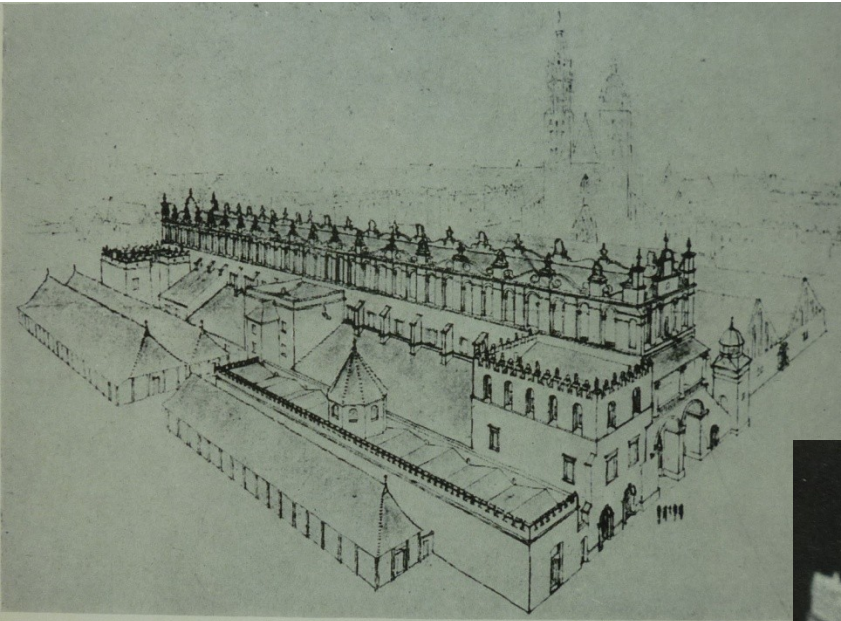
231 Cresting of the castle wing at Jindřichův

Paczków, farní kostel, 1529, atika,  
Vavřinec Lorek, Pabianice, 1571



238 Wawrzyniec Lorek: Manor, 1565-71. Bohemian gable and Polish parapet. Pabianice

# Krakov – Sukenice – 14. stol. – přestavba 1556, Giovanni Maria Padovano



239 Market square with cloth hall. Reconstruction drawing. Cracow







Prawa autorskie

Come **2** Europe.eu



Kraków - zwiedzanie  
**Stare Miasto - Sukiennice**

# Santi Gucci



241 Cloth Hall. Short side from the south, probably by Gian Maria Mosca il Padovano. Some alterations of 1875-9. Cracow



G. M. Padovano, radnice v Tarnówě, pol. 16. stol

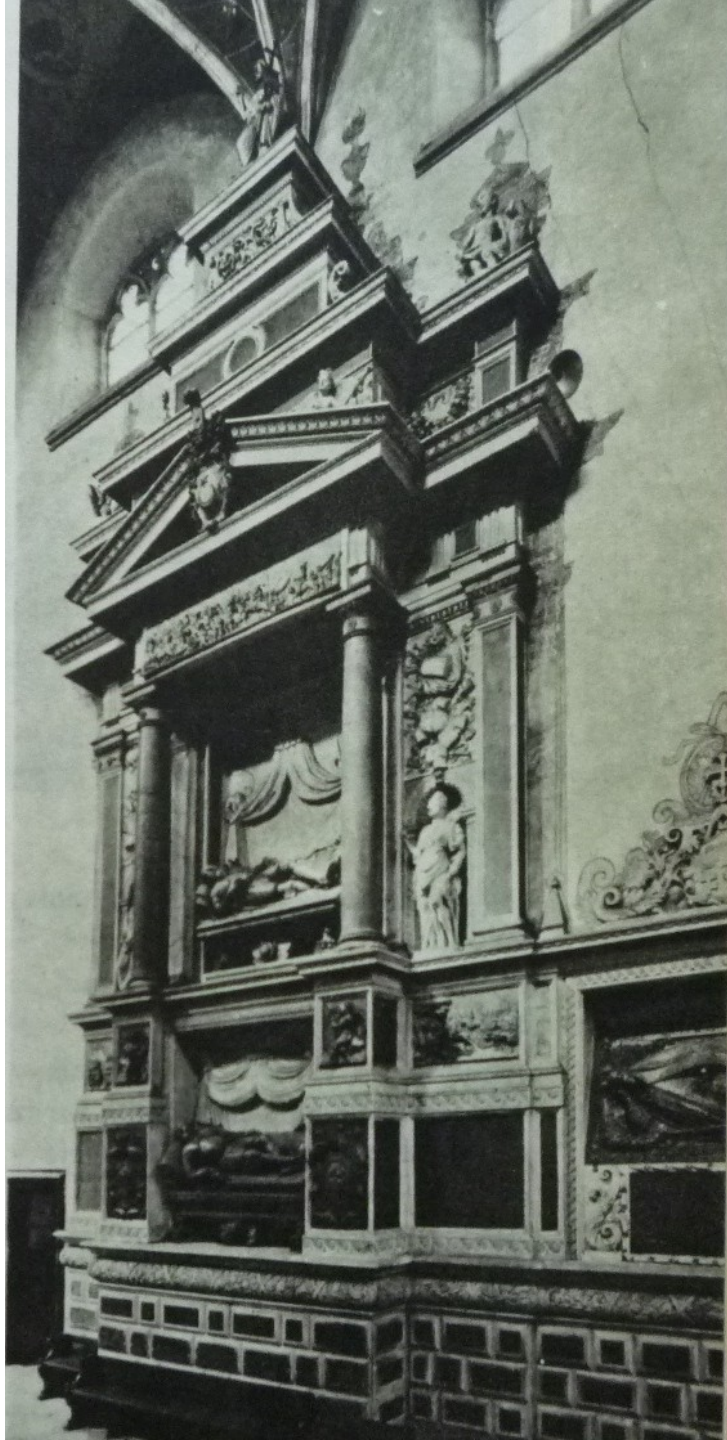


# G. M. Padovano, Luboml, synagoga

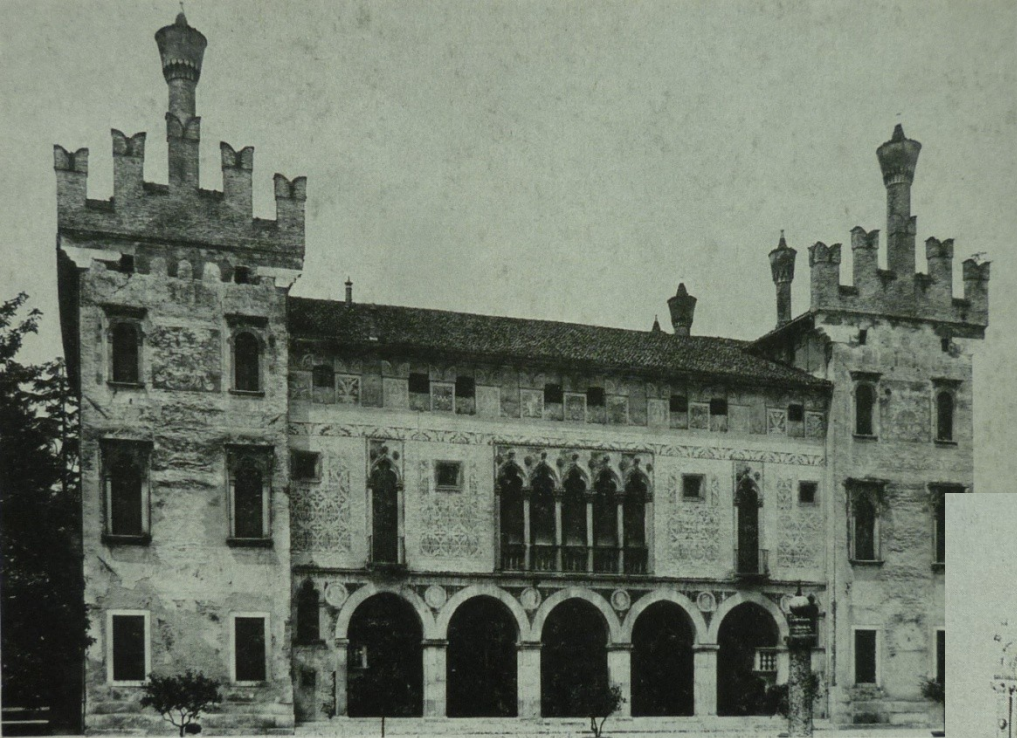




246 Synagogue with parapet of the Polish type. Luboml



Giovanni Maria Padovano –  
náhrobek Jana a Jan Krzysztofa  
Tarnowských v Tarnówě, katedrála  
1561-70



258 Villa Porto Colleoni, 1490-1500. Thiene, near Vicenza



# Poznań, radnice, Giovanni Battista Quadro z Lugana – 1551 – 1560



269 Giovanni Battista Quadro: Façade of the town hall, Poznań (see Fig. 265)



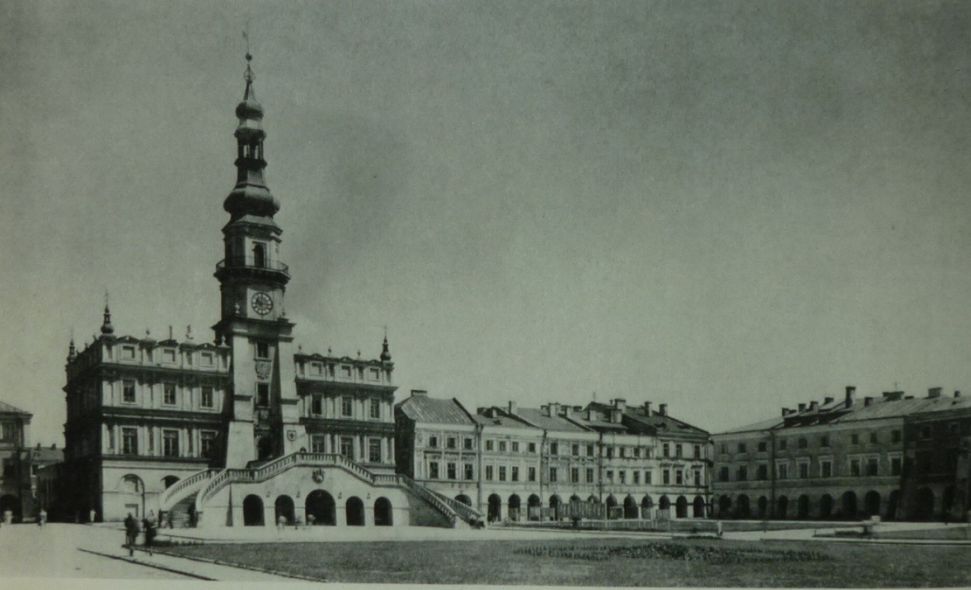


*Le grand vestibule de l'Hôtel de Ville*

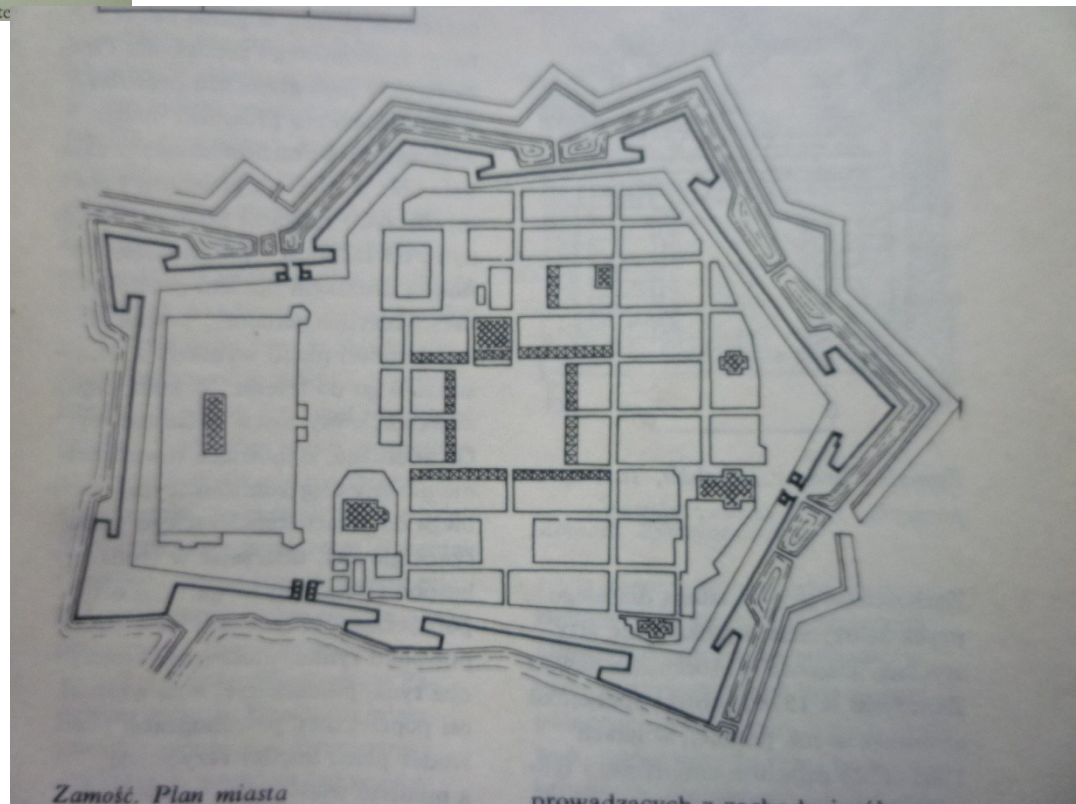
# Jakub Pario (Parr), Brzeg, radnice, 1570-72



## Zamość a kanclerz Jan Zamojski



276 General view of the main square of Zamość with town hall, 1591-1600, 1639-51 and late



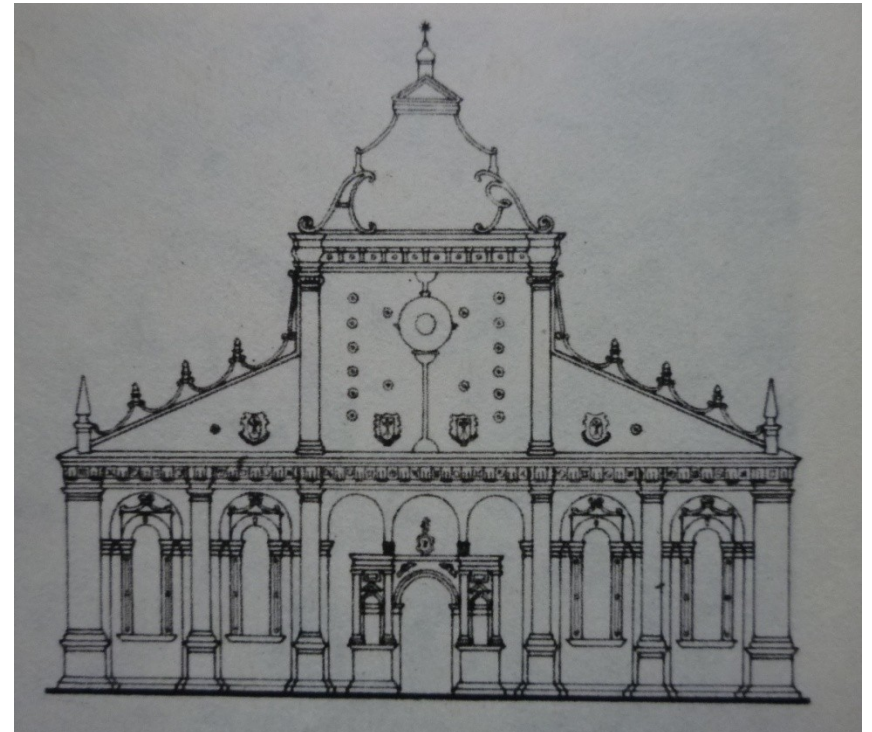
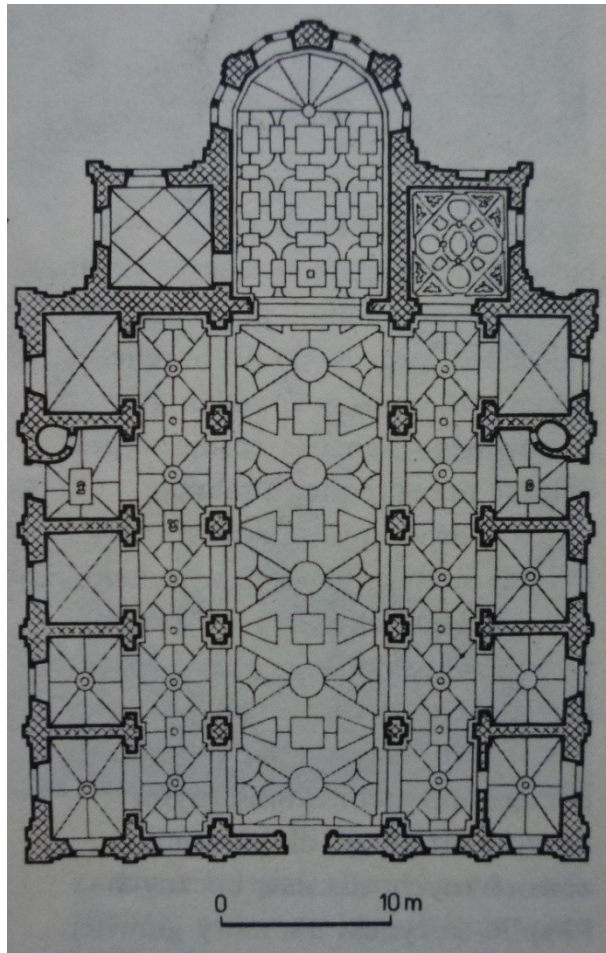
Bernardo Morando – projekt Zamość, od 1581  
(radnice: po 1639)







# Bernardo Morando, Zamość, kolegiáta, 1587-1600









## Zamość, synagoga

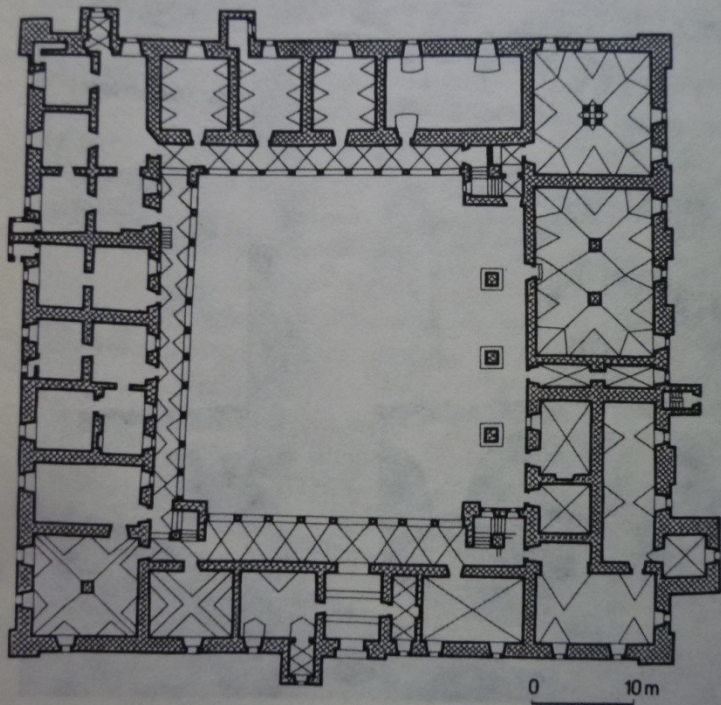


Vila Josta Ludwiga Decia ve Wola Justovska u Krakova – první polovina 16. stol. (poč.17. stol. přestavěno)

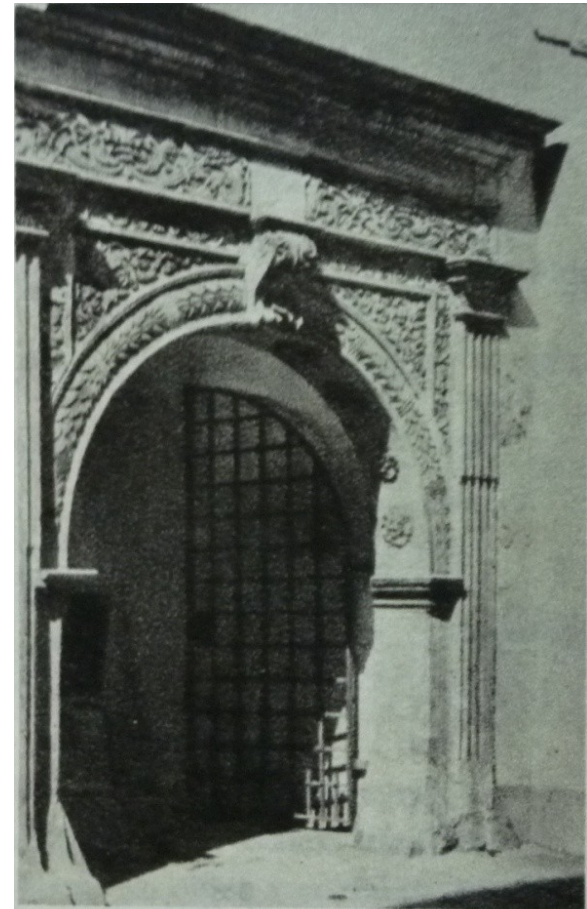


Marek i Ewa Wojciechowscy  
<http://www.poczta-polska.pl/mw> GNU FDL  
Krakow-Wola Justowska'2008 #3

Niepolomice u Krakova -1550-1571  
(Tomasz Grzymała )



*Niepolomice. Zamek; plan przyziemia*



NIEPOŁOMICE, zamek, 1550-71:





# Szymbark u Gorlic – zámek rodiny Gladyszowů – do 1571









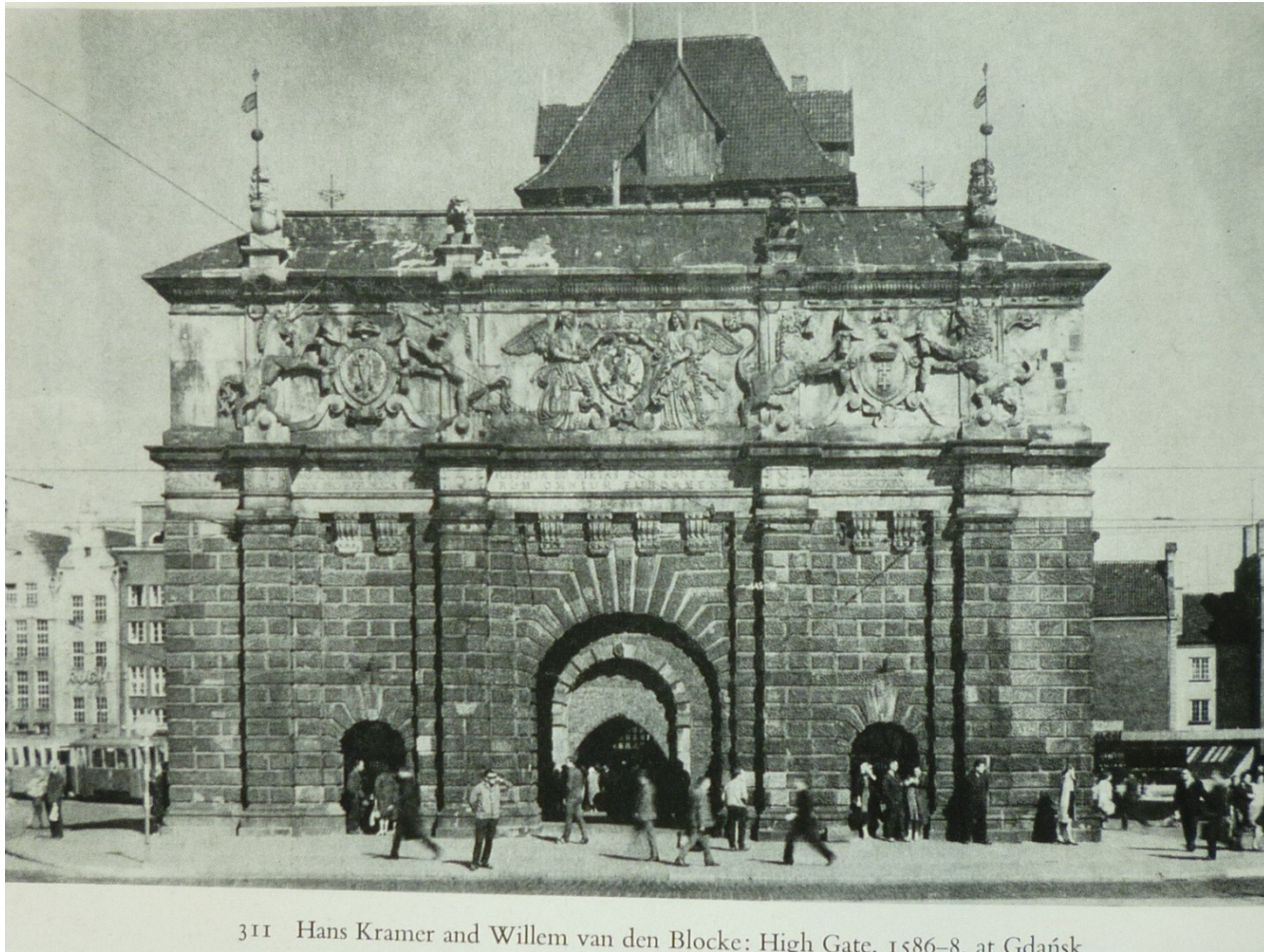
Pieskowa Skala, zamek,  
koniec 16. stol.  
rodzina Szafranców



Pieskowa Skala, zámek,  
konec 16. stol.  
rodina Szafranców



Městská brána v Gdaňsku, Hans Kramer z Drážďan – 1586-88  
fasádu navrhl Wilhelm van de Blocke



311 Hans Kramer and Willem van den Blocke: High Gate, 1586-8, at Gdańsk



# Abraham van de Blocke, Zlatá brána v Gdaňsku, 1612-14





# Anthonis van Opbergen, Arsenal, Gdańsk, 1605



313 Anthonis van Opbergen: Arsenal, 1602–5. South-east front. Gdańsk



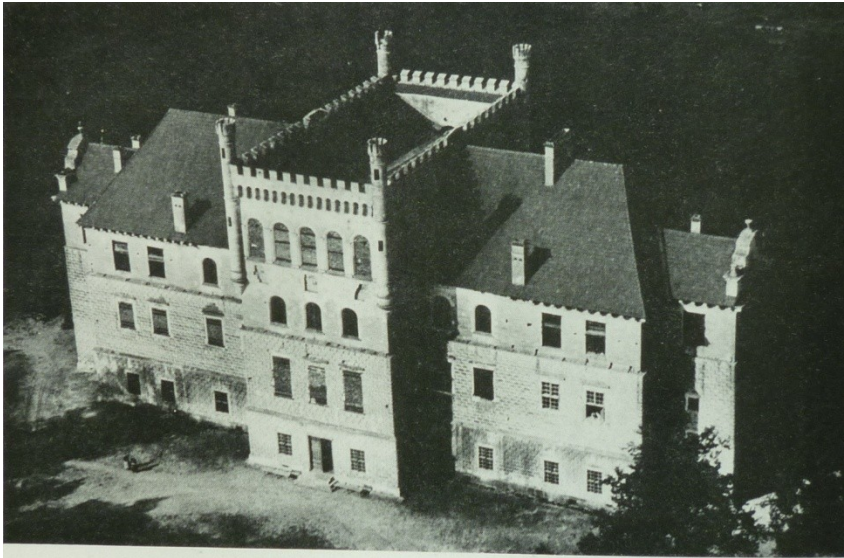
314 Anthonis van Opbergen: Arsenal, 1602–5. North-west front. Gdańsk



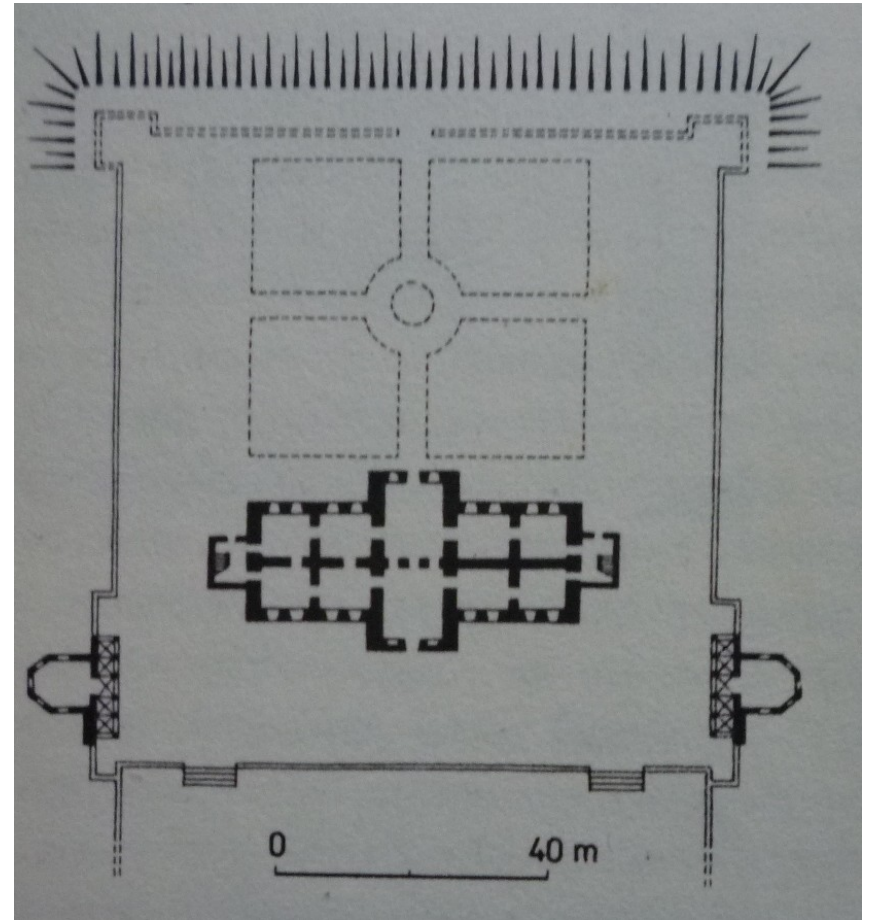


Santi Gucci

Palác Piotra Myszkowského v Książu Wielkim (Mirow)– 1585-95



305 Santi Gucci: Castle, 1585-95; remodelled 1841-6. Książ Wielki











Santi Gucci,  
kaple Myszkowských  
v Krakově u dominikánů 1603

# Santi Gucci, Kapitulní palác v Krakově – 1592



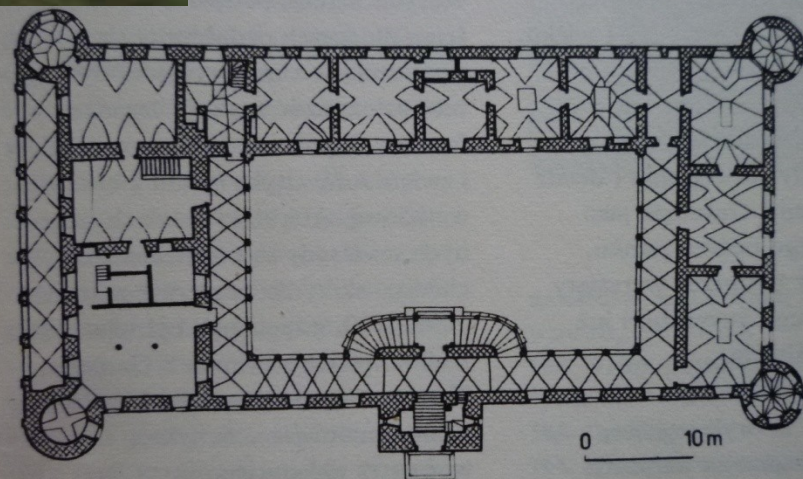


Santi Gucci, lavice v kapli  
P. Marie v krakovské  
katedrále, 1594



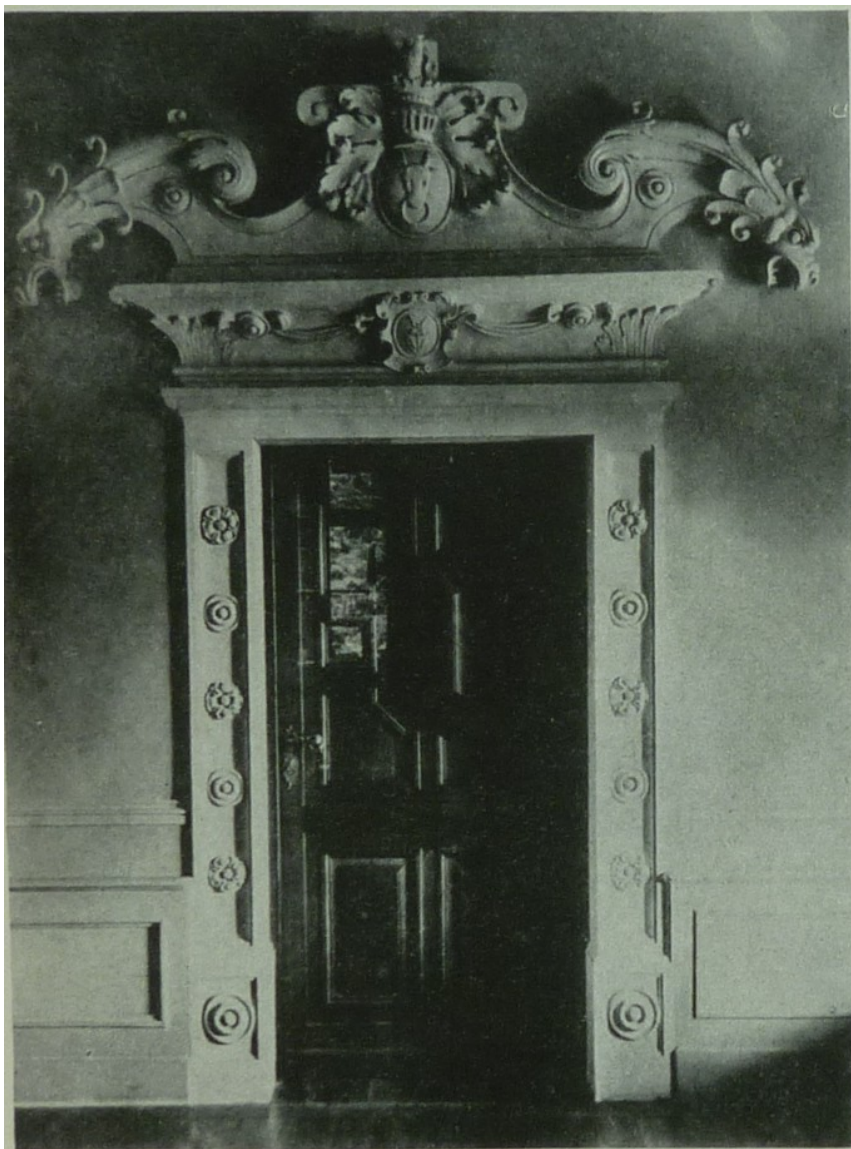


Zámek v Baranówě  
(Sandoměřsko)  
rodina Leszczyńských –  
1591-1606

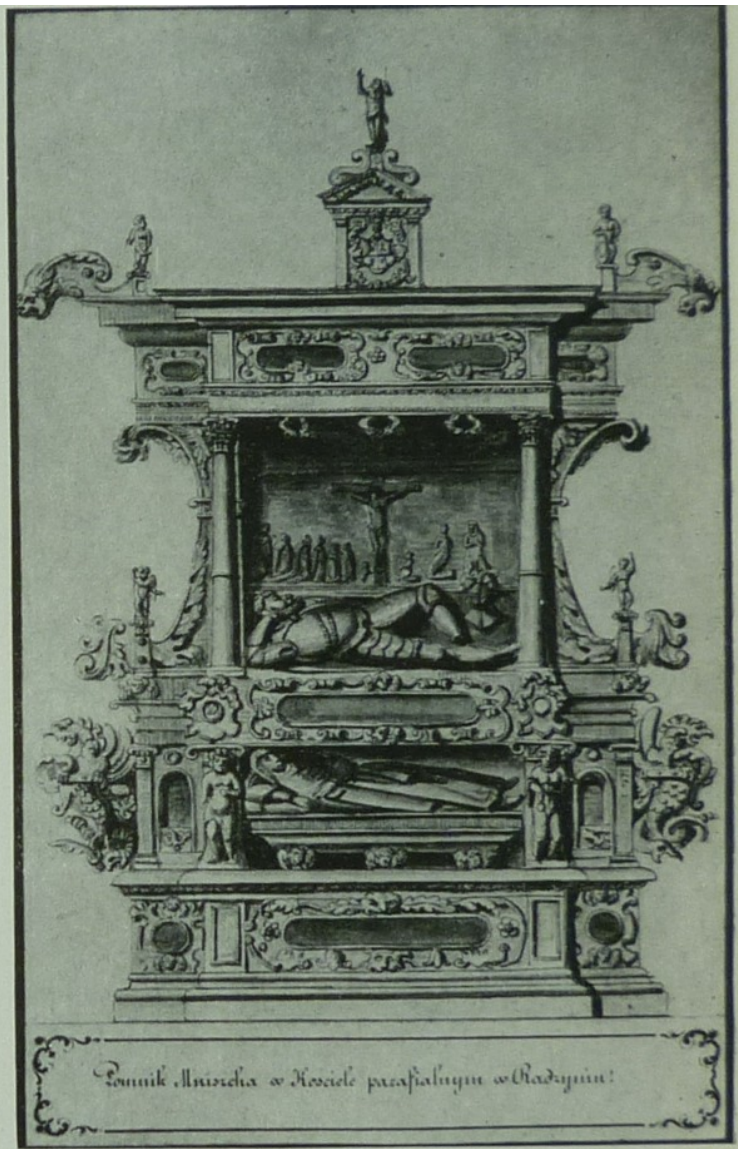




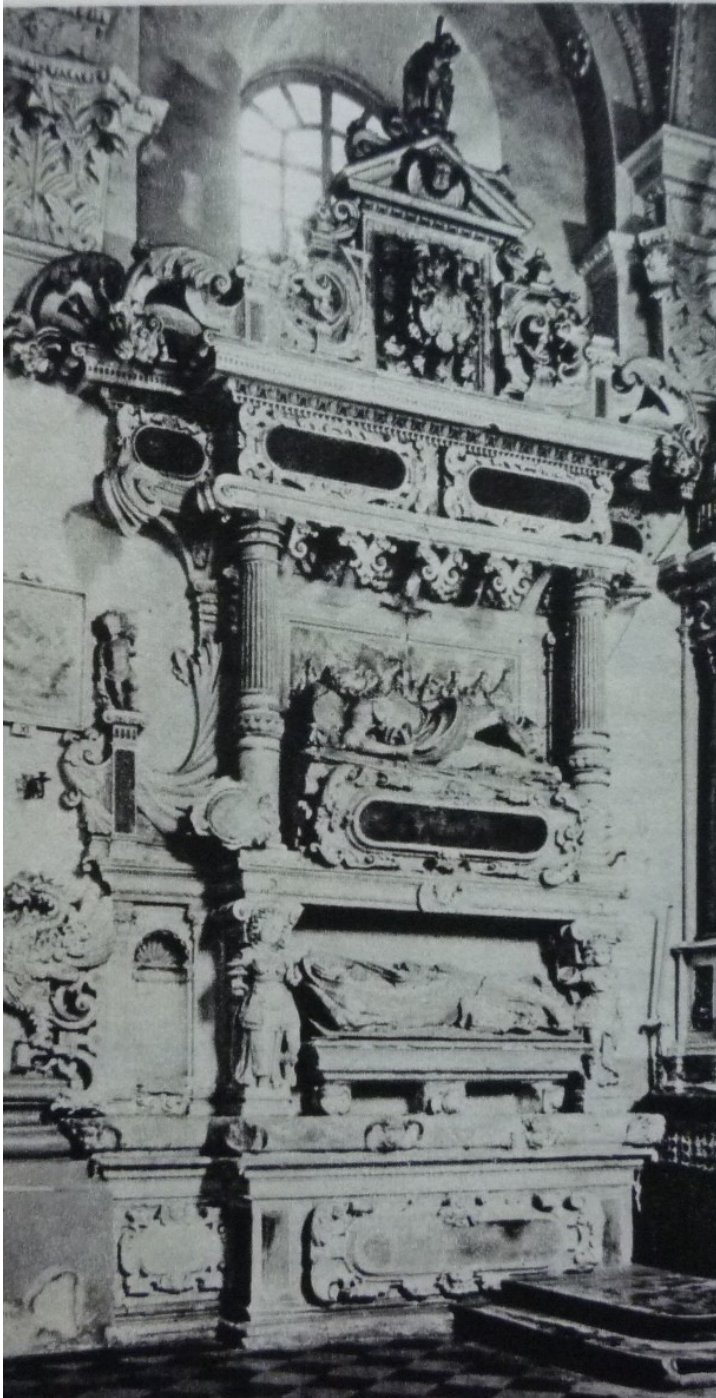




341 Portal with dragon heads, arcade of the castle at Baranów



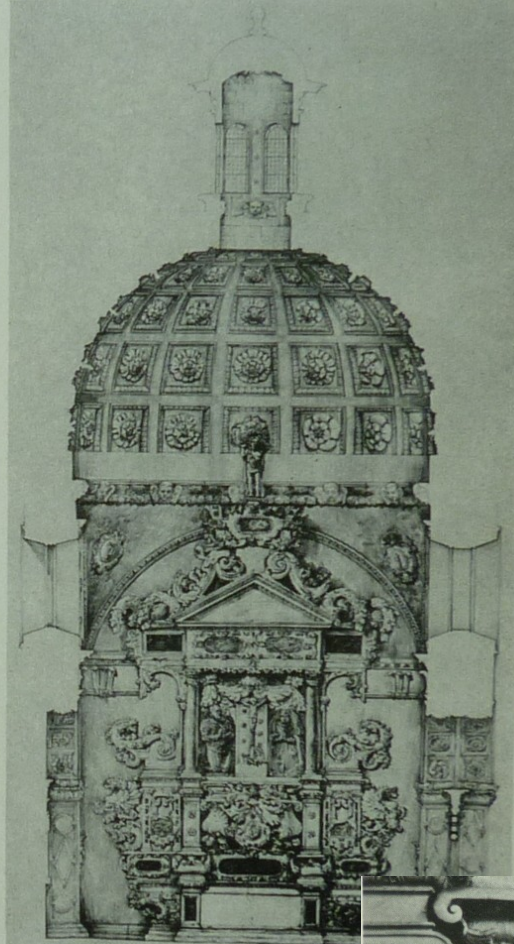
342 Tomb of Zofia and Mikołaj Mniszech. Radzyń.  
After a nineteenth-century drawing, Warsaw,  
University Library



Náhrobek belského  
vojvody Pawła  
Uchanského, Uchanie,  
poč. 17. stol.

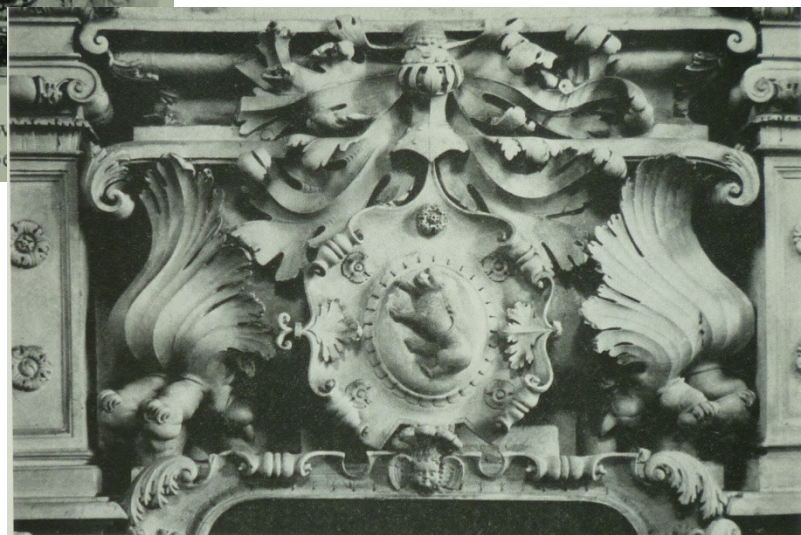


Náhrobek rodiny Uchanskich  
v Uchanie, kolem 1600



344-345 Workshop of Samuel Świątkowicz: Chapel of the Firlej family, 1593-1601. Doorway between the chapel and the church, and modern drawing of the interior with the tomb of the Firlej family. Bejce

Samuel Świątkowicz, Bejce,  
kaple rodziny Firlejów, do 1601



346 Workshop of Samuel Świątkowicz: Chapel of the Firlej family, 1593-1601. Detail of the decoration. Bejce

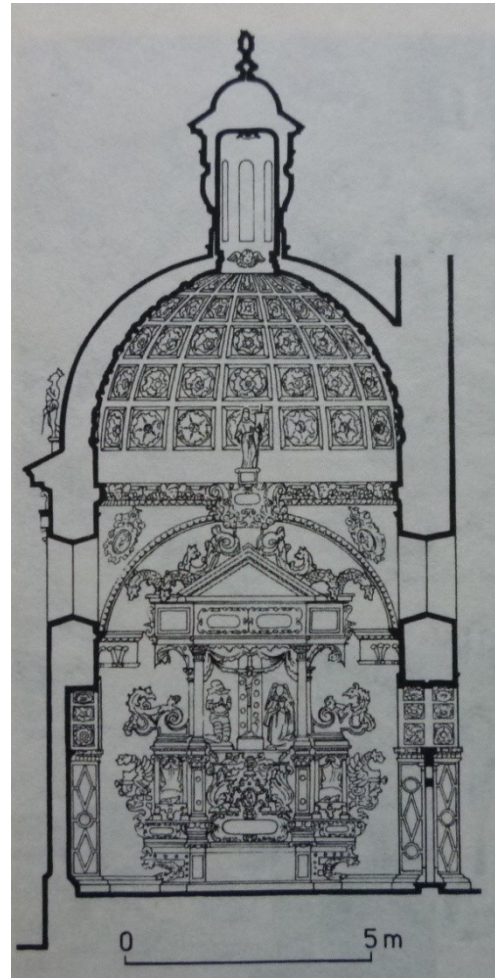
# Dílna Samuela Światkowicz: Bejsce, kaple rodiny Firlejů, 1601







# Bejsce

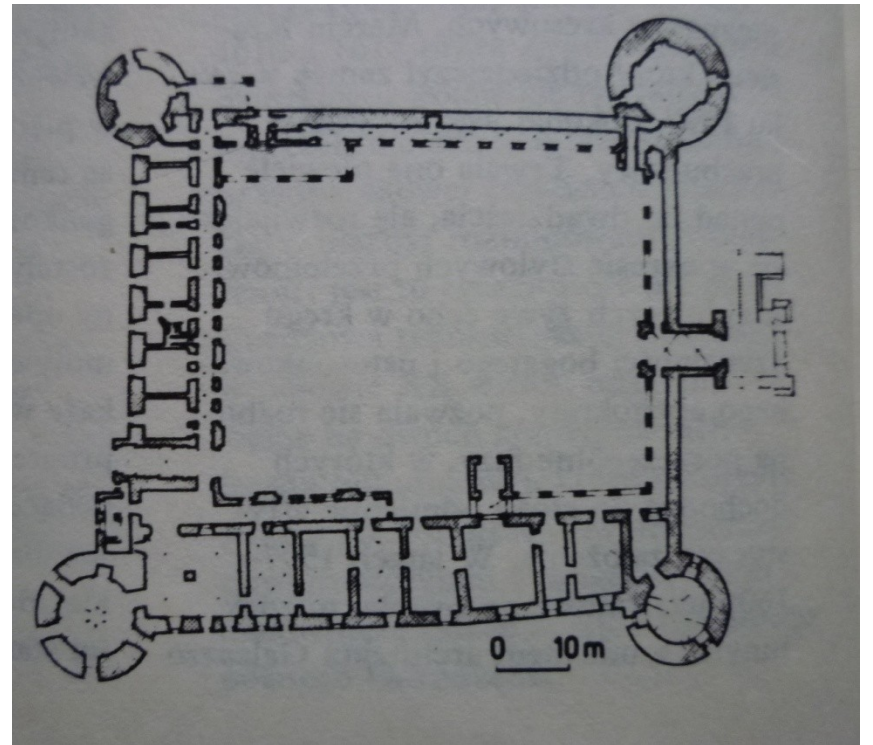




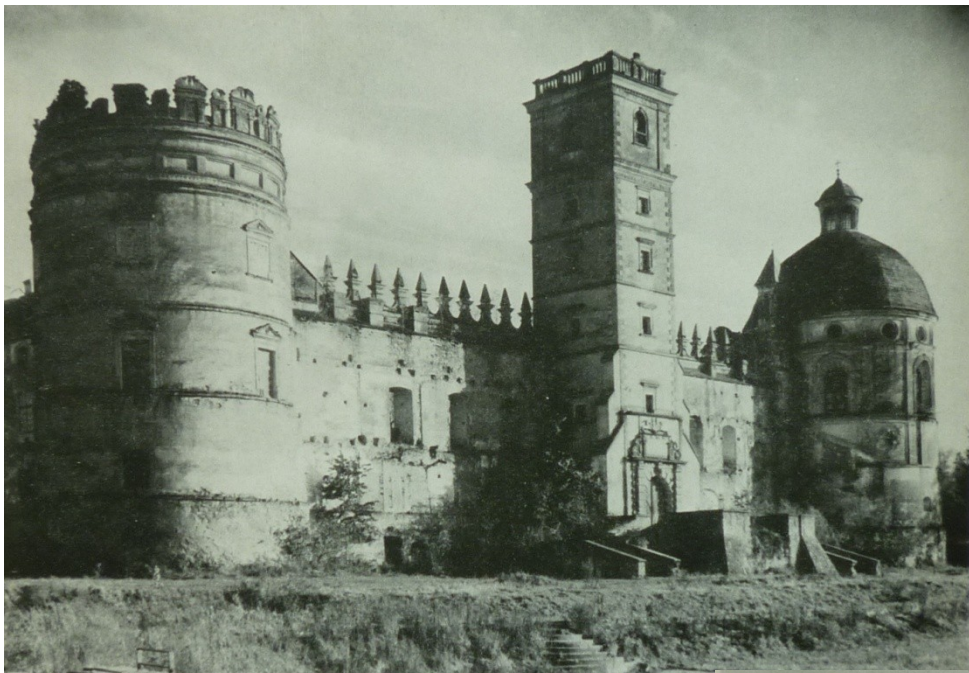


# zámek v Krasiczyně, 1598-1633

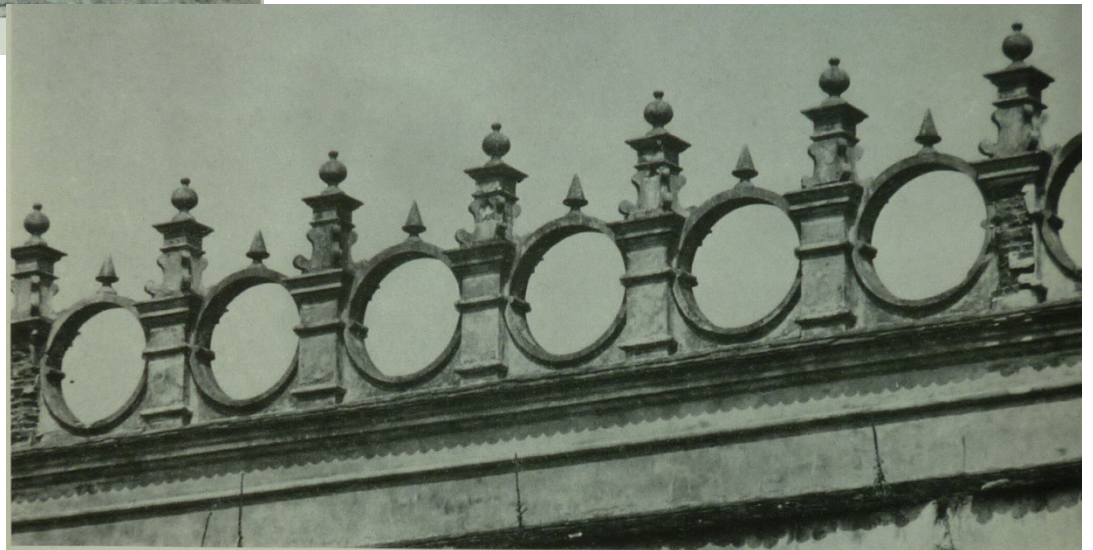








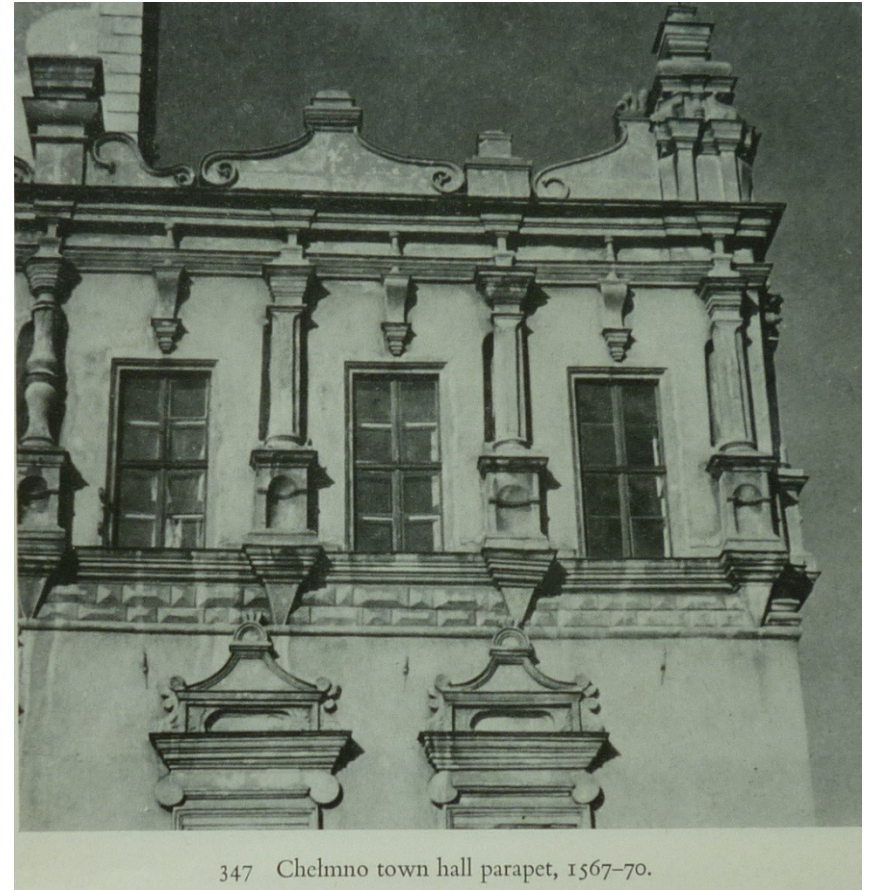
338 Castle, last remodelling 1598–1633, at Krasiczyn



339 Parapet of the south wing of the castle at Krasiczyn (extensively restored early twentieth century)



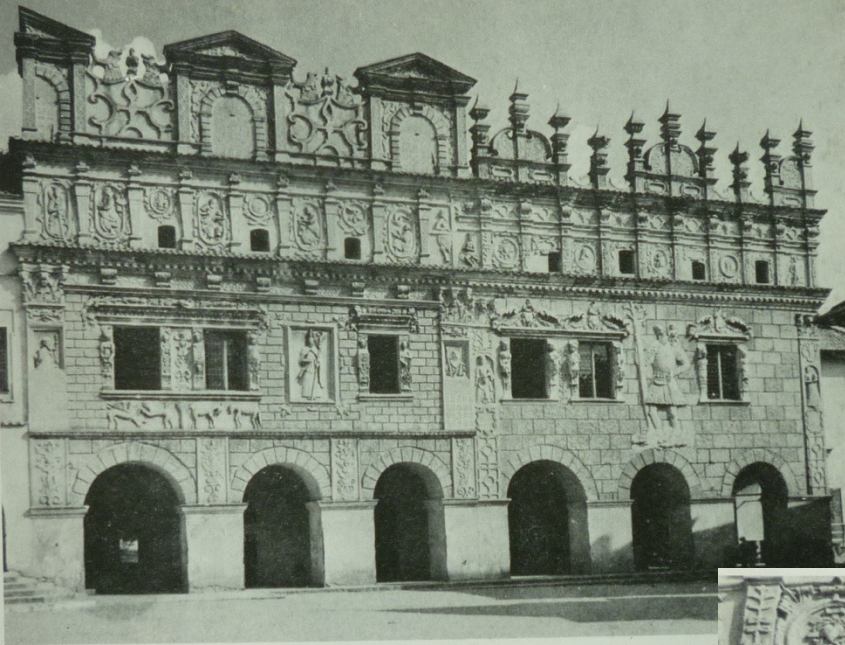
# Chelmno v Pomořansku – radnice 1567-70



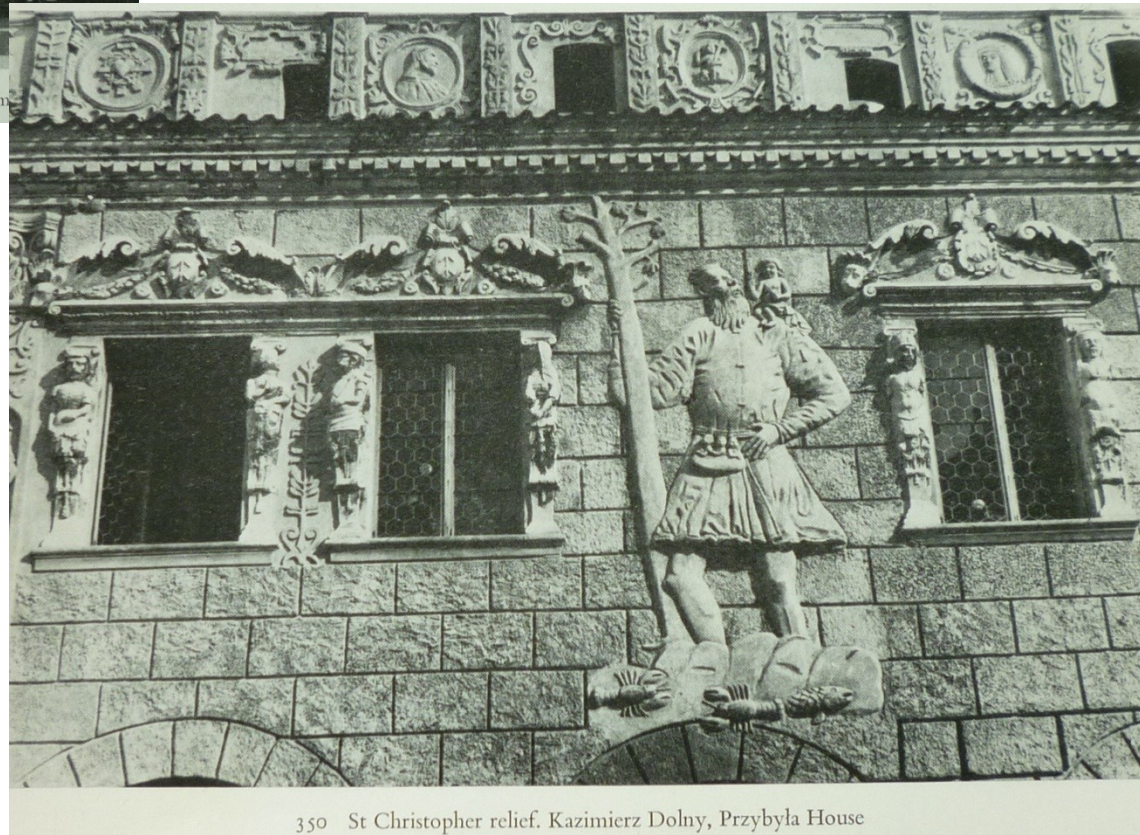
347 Chelmno town hall parapet, 1567-70.

# Kazimierz Dolny





349 Houses of the Przybyła (St Nicholas and St Christopher Houses, 1615) Kazimierz Dolny

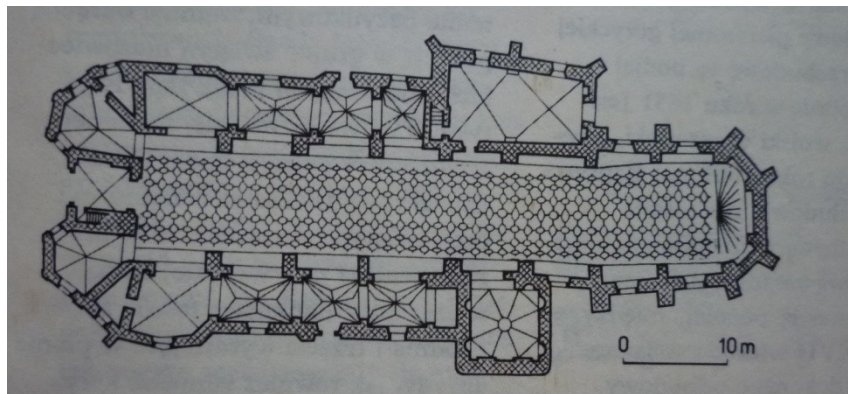


350 St Christopher relief. Kazimierz Dolny, Przybyła House

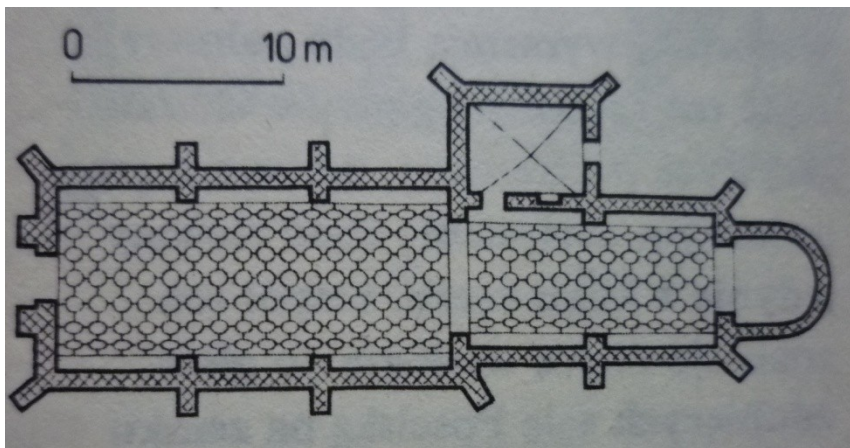
Kazimierz Dolny, dům Celejowských,  
kolem 1635



# Puštusk – kolegiátní kostel - pro plockého biskupa Jan Baptista z Benátek, kol. 1560



Brok – f. kostel, 1560, "Jan baptista z benátek, 1561



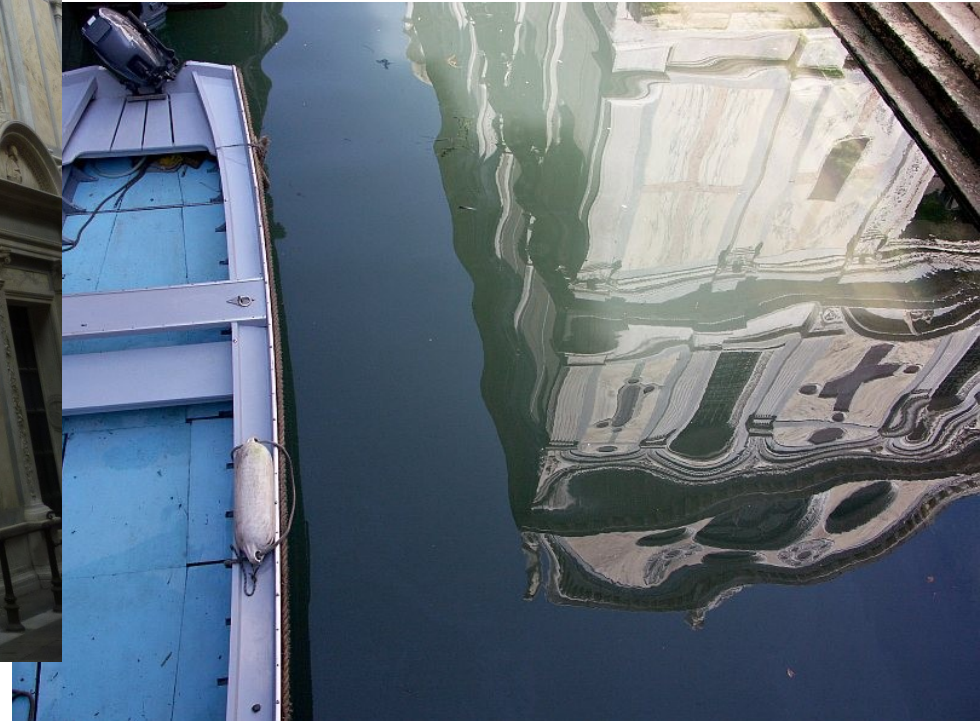
# Brochów, sv. Roch, Jan Patista z Benátek, 1551-1561







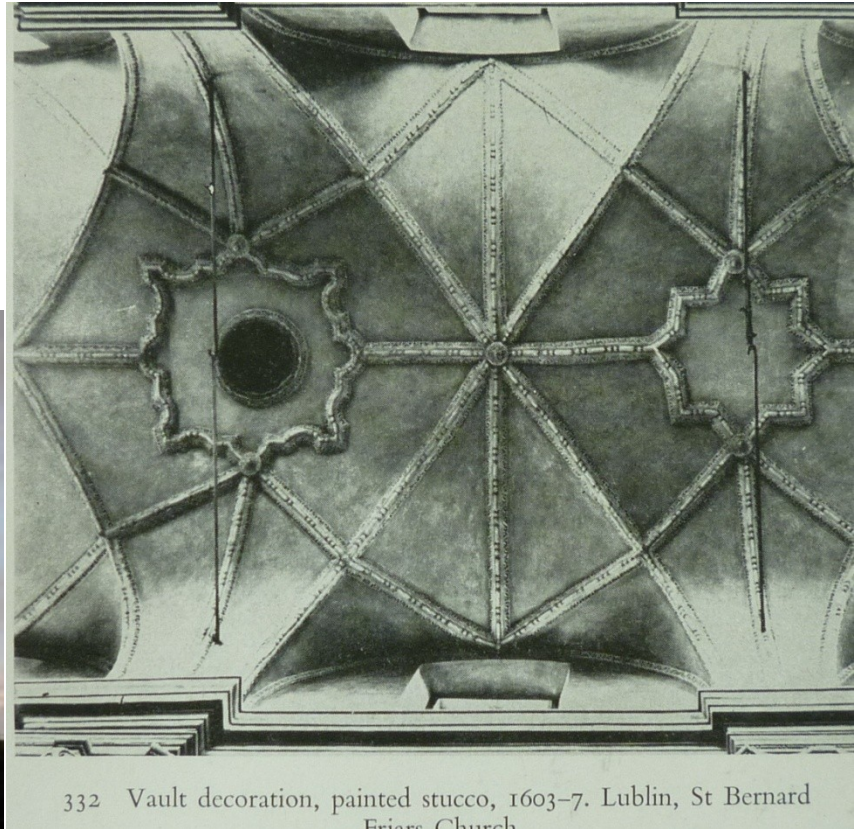
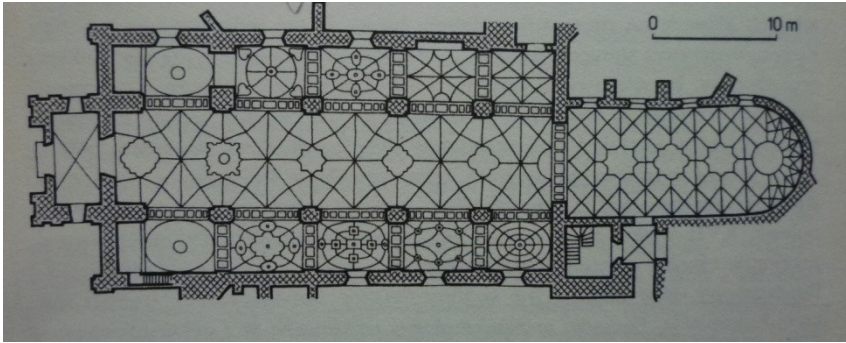
S. Maria dei Miracoli,  
1481-1489:  
Pietro Lombardo (1435-1515)





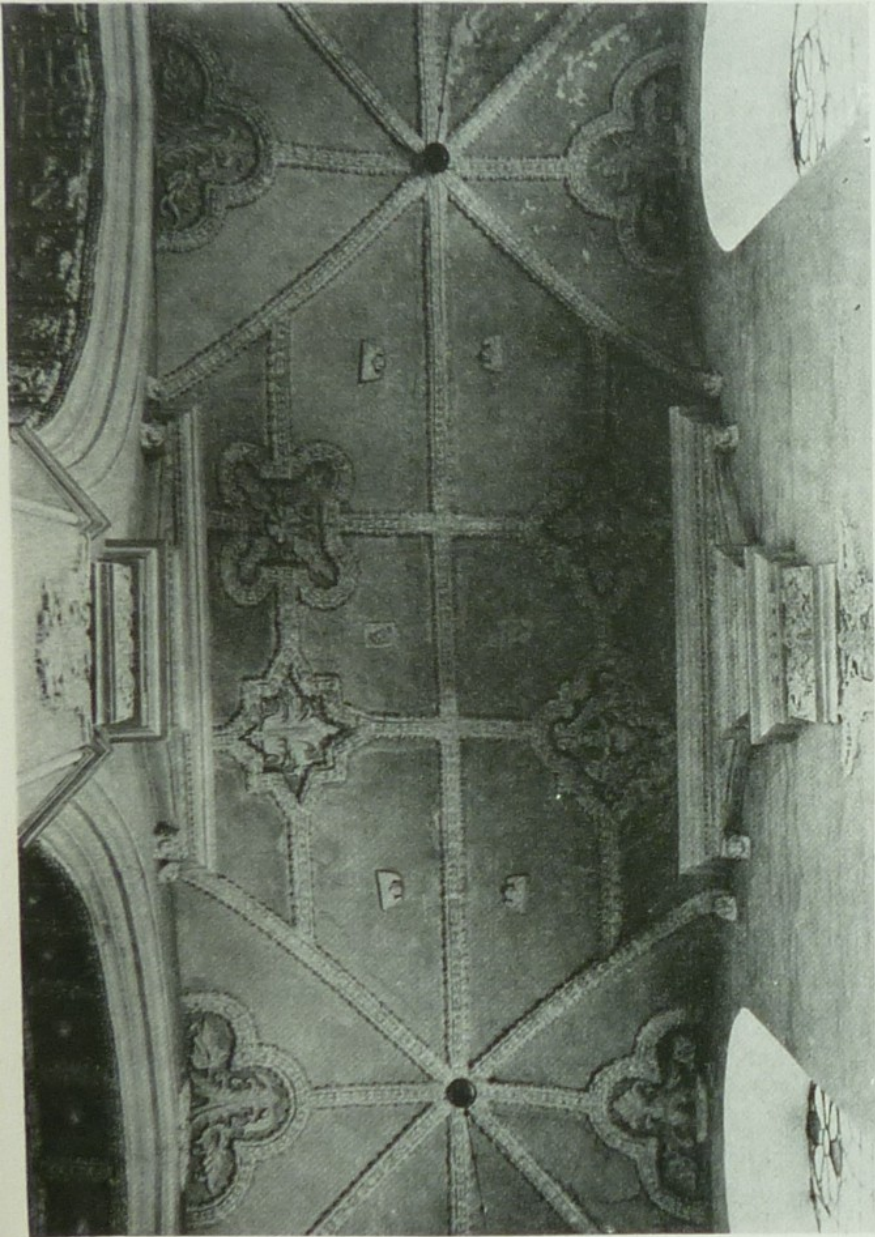


# Lublin, kostel bernardinů, 1603-07



332 Vault decoration, painted stucco, 1603-7. Lublin, St Bernard Friars Church





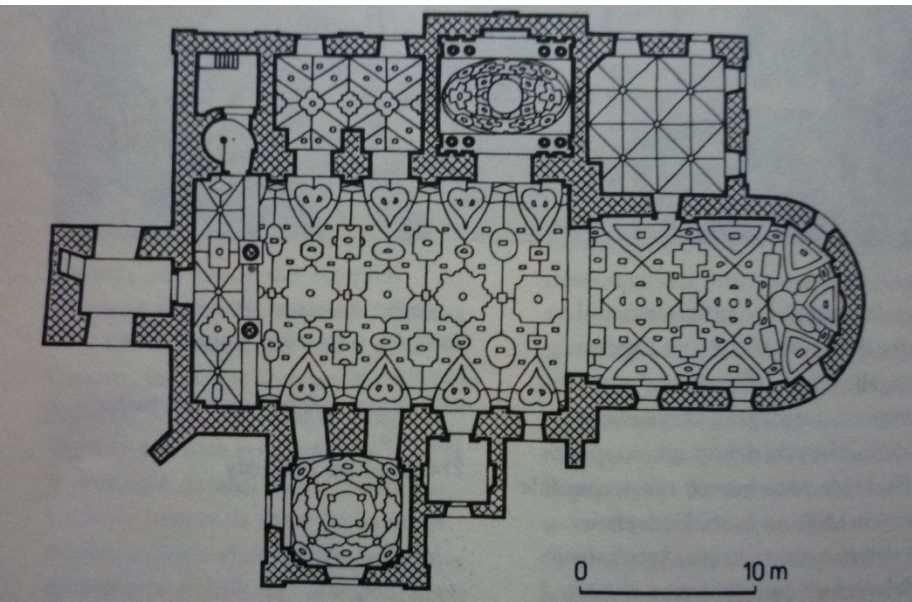
333 Albin Fontana: Vault decoration, painted stucco, 1599-1632. Kalisz, Franciscan Friars Church



334 Jan Jaroszewicz and Jan Wolff: Vault decoration, painted stucco, about 1625. Uchanie, Parish Church

Kazimierz Dolny, farní kostel, 1589, Jakub Balin





Krakov, jezuitský kostel sv. Petra a Pavla, 1612 (Giovanni de Rossi, Matteo Castello)

























Nieśwież , jezuitský kostel, kol. 1590  
Řím, Il Gesú, fasáda 1571-1584



Krakov, jezuitský kostel sv. Petra a Pavla;  
Řím, S. Cecilia; S. Susanna (C. Maderna); Il Gesú



Lvov, jezuitský  
kostel, 1629  
(Giacomo Briano)

