



www.priniatikos.net



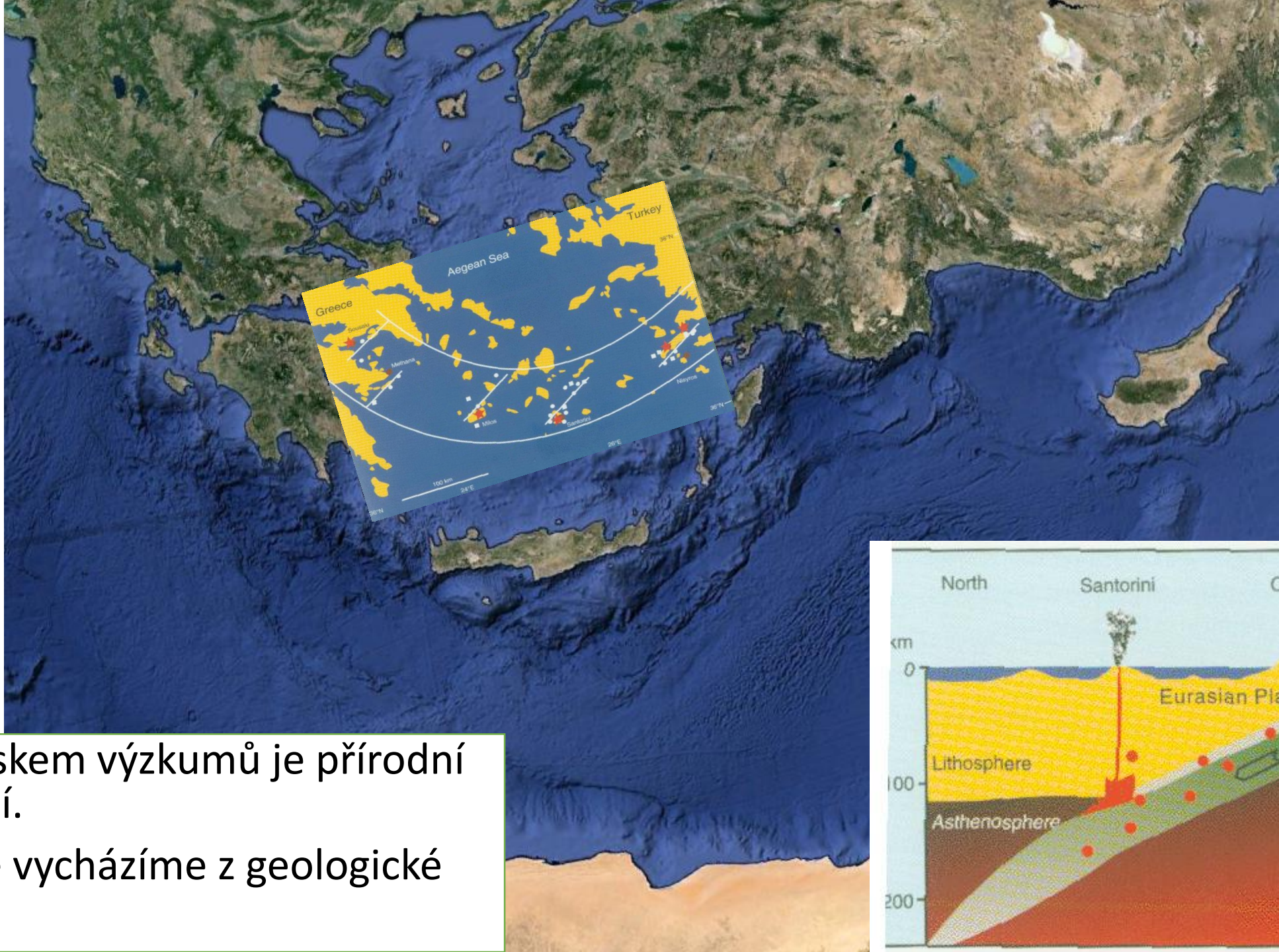
Priniatikos Pyrgos a Oxa (Kréta): 5000 let sídlení



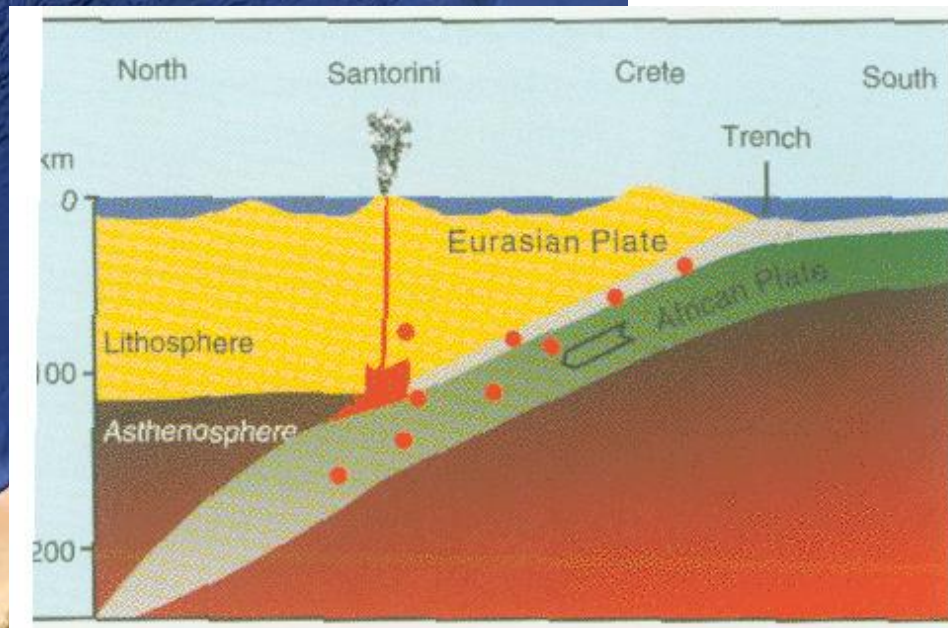
vera.klontza@gmail.com

- Klasická archeologie si klade stejné otázky jako prehistorická nebo středověká archeologie.
- Jejím cílem **NENÍ** získávat umělecké předměty a studovat jejich styl.
- Nebylo tomu tak vždy.
- Dnes jsou v Egeidě aplikovány dva způsoby exkavace:
 - Postup po mechanických vrstvách kombinovaných s daty čtenými na kontrolních profilech (americké a německé výzkumy)
 - Kontextuální archeologie (britské výzkumy)

Na našich projektech postupujeme kontextuálně.



- Východiskem výzkumů je přírodní prostředí.
- V Egeidě vycházíme z geologické situace.



Základní příručka pro egejskou archeo-enviromentalistiku:

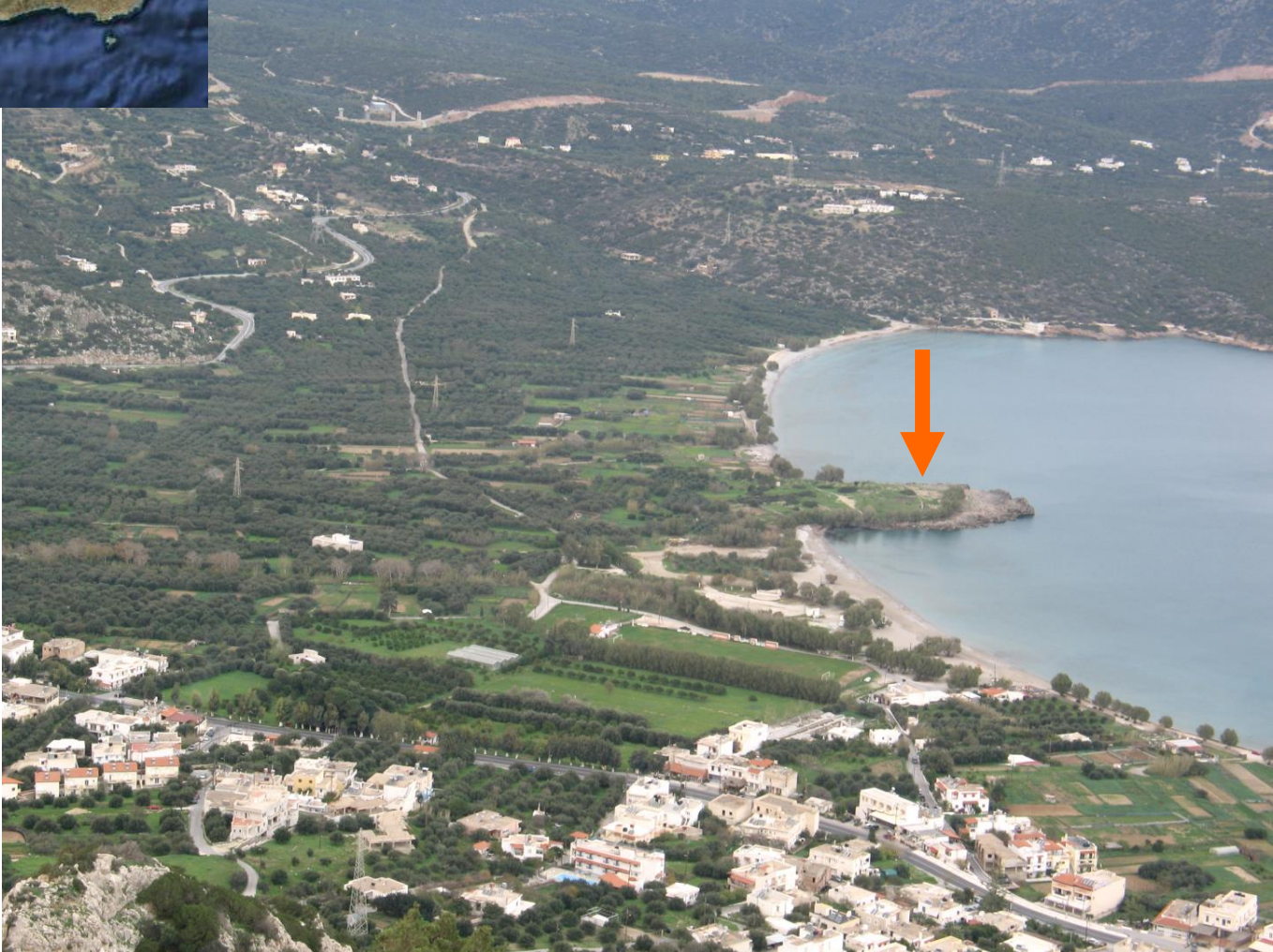
✓ **Rackham, O. and J. Moody, 1996: The making of the Cretan Landscape.** Manchester University Press, Manchester and London



Region našeho
zájmu: záliv Mirabello



Priniatikos Pyrgos



Priniatikos Pyrgos je vápencový blok vystupující do moře z písčného aluvia.



Edith Dohan Hall

(1877 – 1943)



První výzkumy na lokalitě: 1913

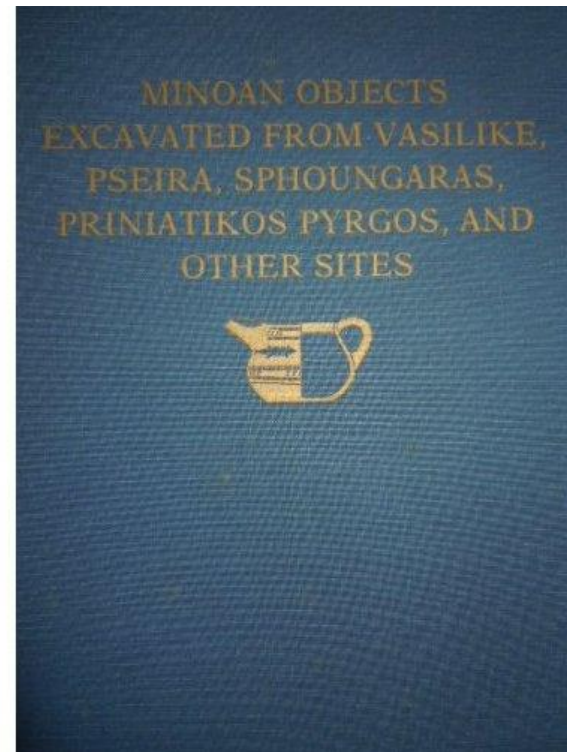


Costis Davaras

- V 50. letech nechal prohlásit Priniatikos pyrgos za archeologickou zónu 1. kategorie, kde je zakázána veškerá stavební i zemědělská činnost.

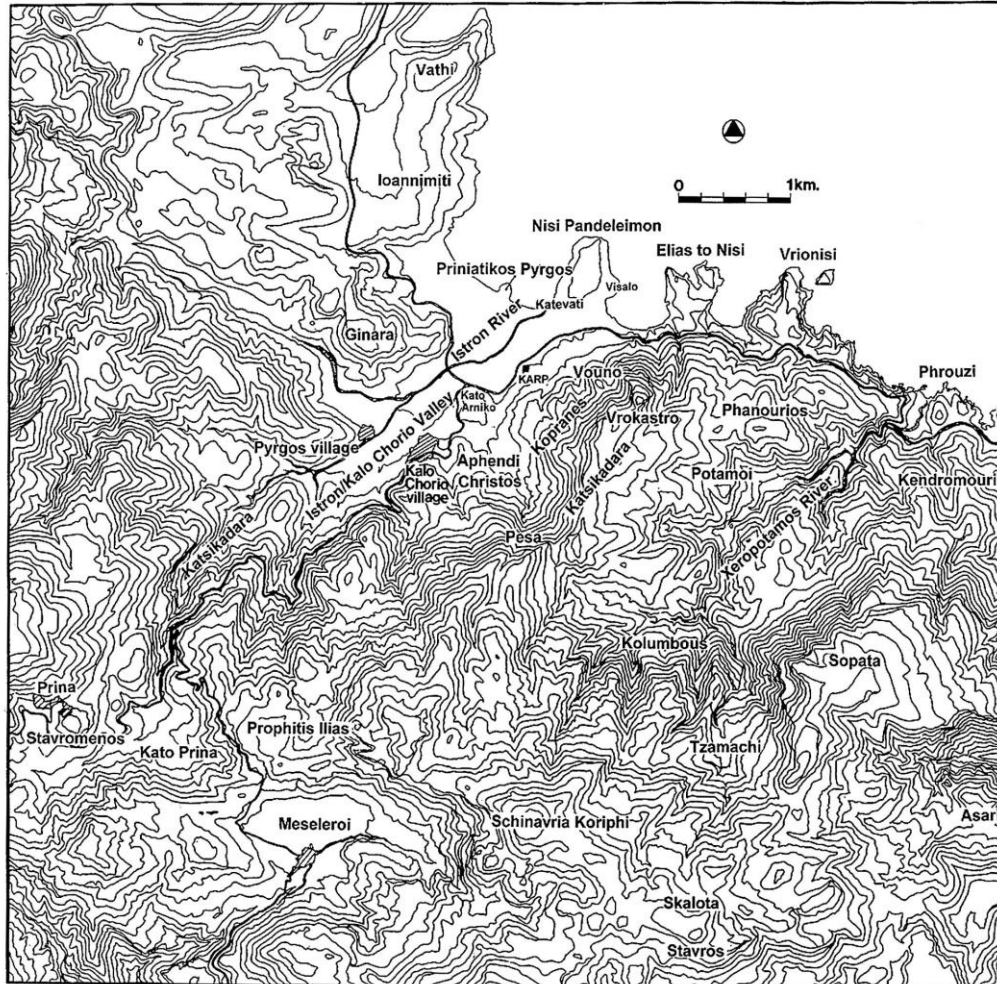


Betancourt, P. P. 1983: The Cretan Collection in the University Museum, University of Pennsylvania I: Minoan Objects Excavated from Vasilike, Pseira, Sphoungaras, Priniatikos Pyrgos, and Other Sites



- Revize starých amerických výzkumů

Barbara Hayden – Vrokastro survey



Hayden, B. et al. 2003 – 2005: Reports on the Vrokastro Area, Eastern Crete. Volume 1 – 3.



2005 – 2006 Rescue project

- ✓ **Hayden, B. Tsipopoulou, M.**
2012: The Priniatikos Pyrgos:
Preliminary report on the Rescue
Excavation of 2005-2006. *Hesperia*.
The Journal of the American School of
Classical Studies at Athens. Vol. 81, No. 4.
507 – 584.





Barry Molloy

- Since 2007: Irish Institute of Hellenistic studies in Athens
- Since 2012: cooperation with UAM Brno



- **Molloy, B. P.C. Duckworth, C. N. (eds.) 2014: A Cretan Landscape through Time: Priniatikos Pyrgos and Environs.** British Archaeological Reports IS 2634. Oxford.

Field work



Postexcavation activities



Team approach



New methods



New archaeological generation



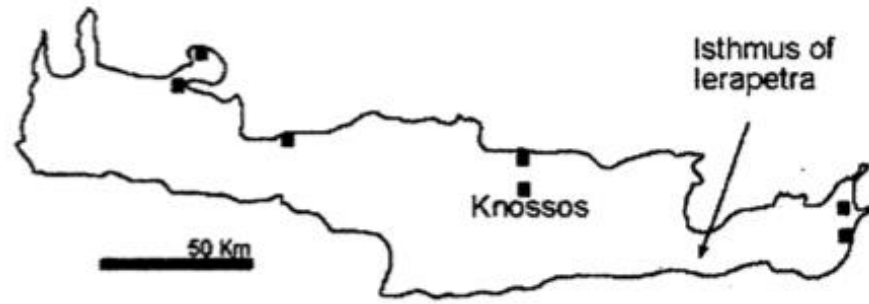
Field school



- **Priniatikos Pyrgos je polykulturní lokalita s téměř kontinuálním osídlením od pozdního neolitu:**

- pozdní neolit
- raná doba bronzová – Early Minoan
- střední doba bronzová – Middle Minoan I – II (Protopalatial)
- pozdní doba bronzová – Late Minoan IA (Neopalatial)
 - LM IB – LM IIIC – chybí
- Doba železná – Orientalizující období – archaické
- Klasické a helénistické období
 - Doba římská – chybí
- Byzantská perioda konec 6. – 9. století, 11. – poč. 13. století
- Benátské období (poč. 13. – pol. 17. stol.)
- Osmanské období (pol. 17. – konec 19. stol.)
- Současnost

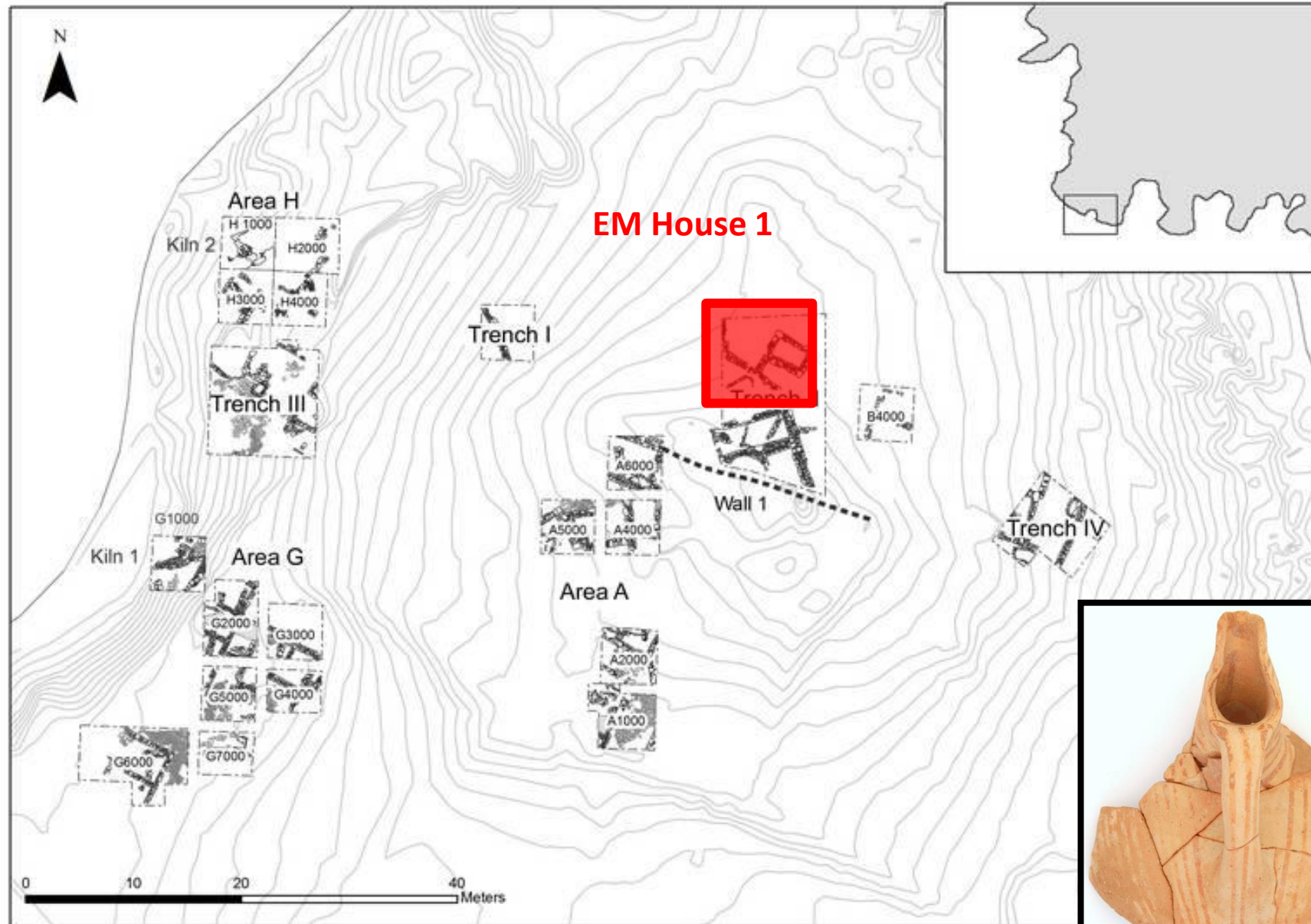
Neolithic Mirabello



MAP. Crete showing EN sites and the Mirabello Bay.



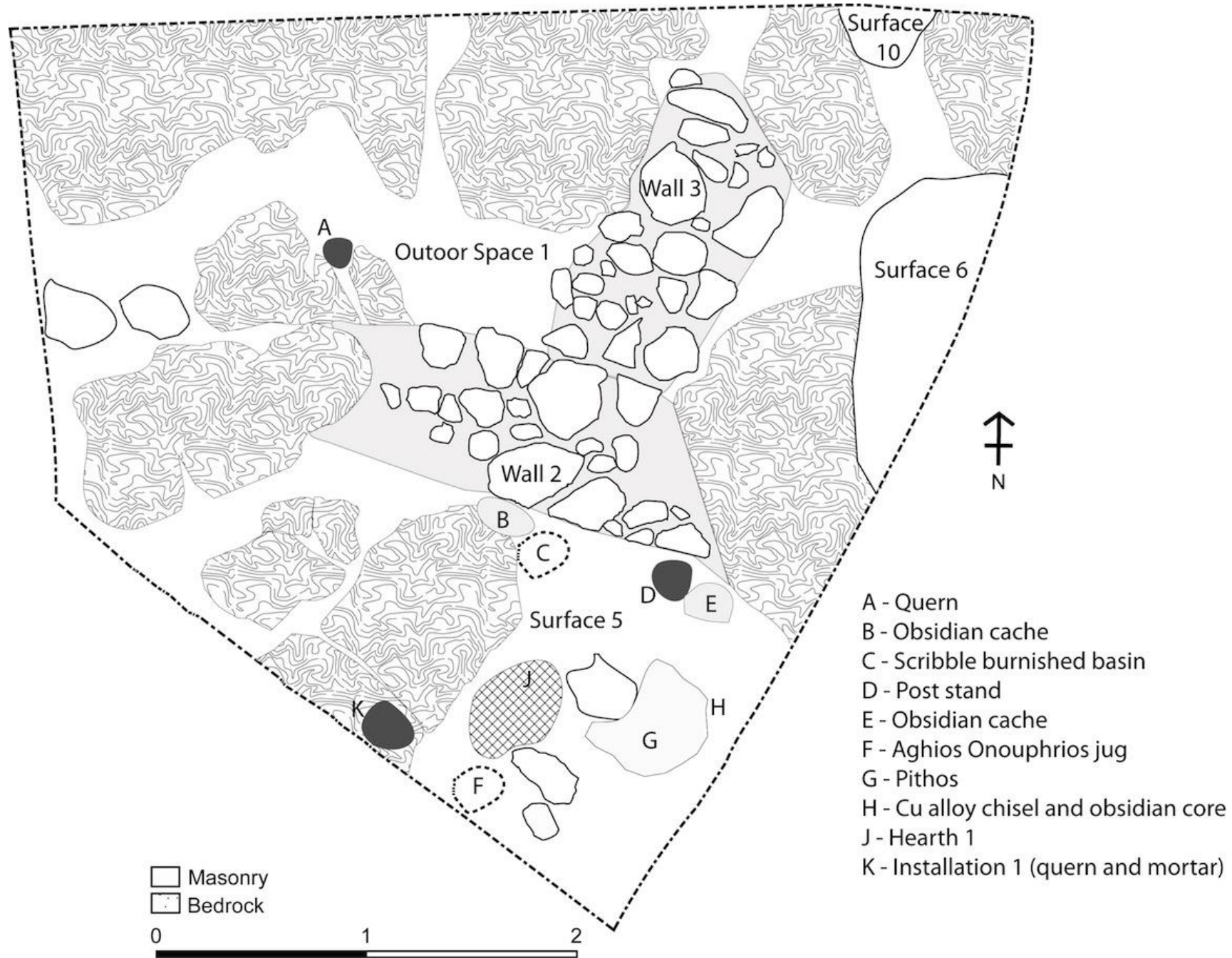
Early Bronze Age PP



Jo Day









PP10 11/8/10
TR II
C. 766
PUC EXCAVATION





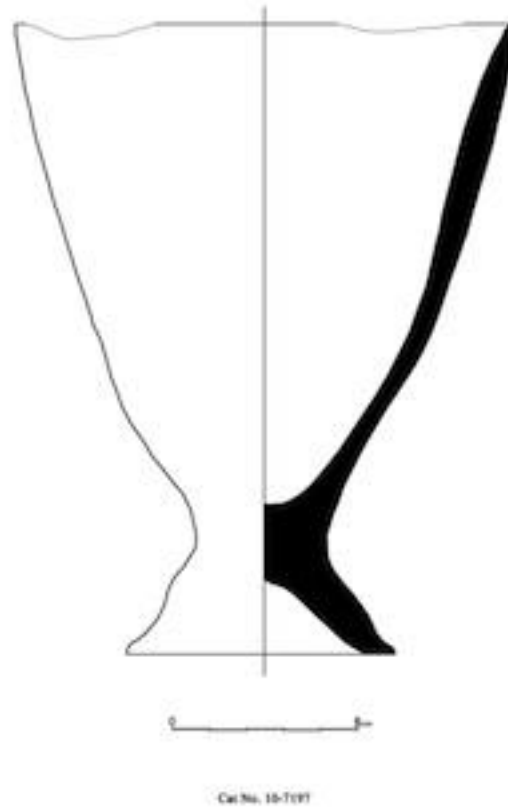


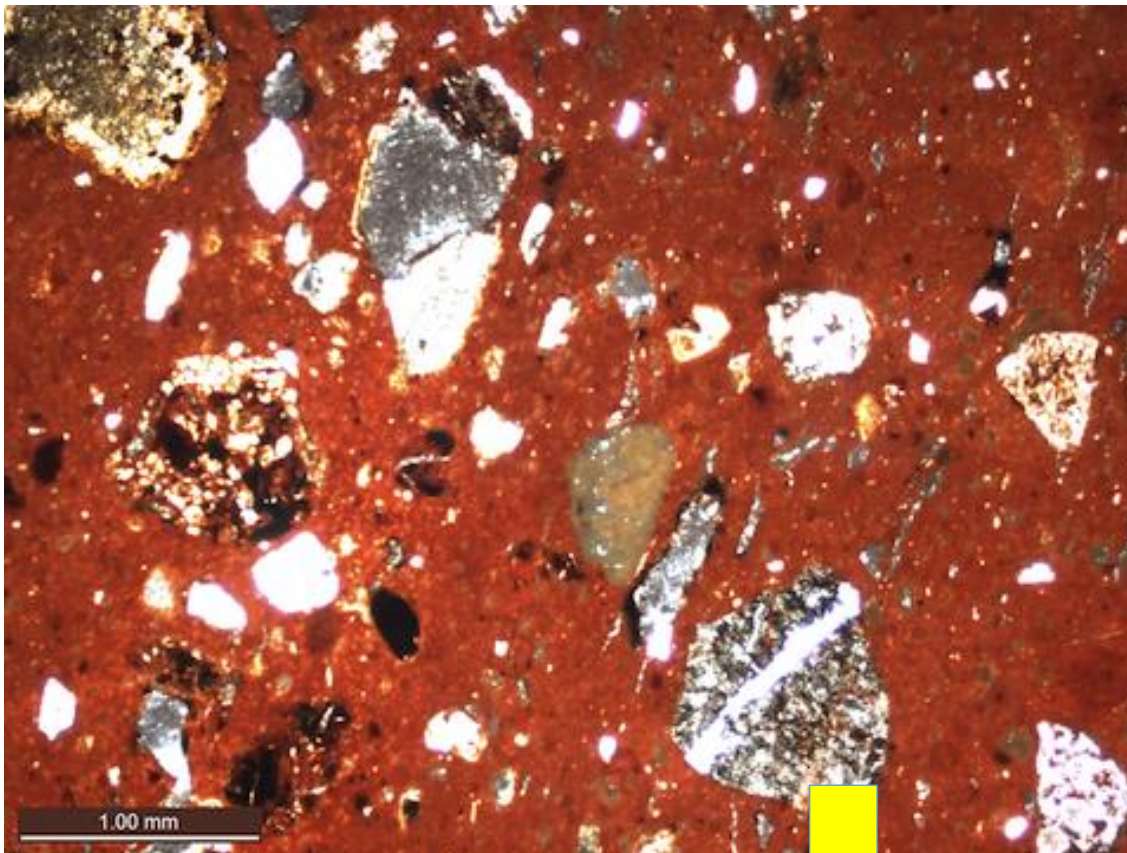








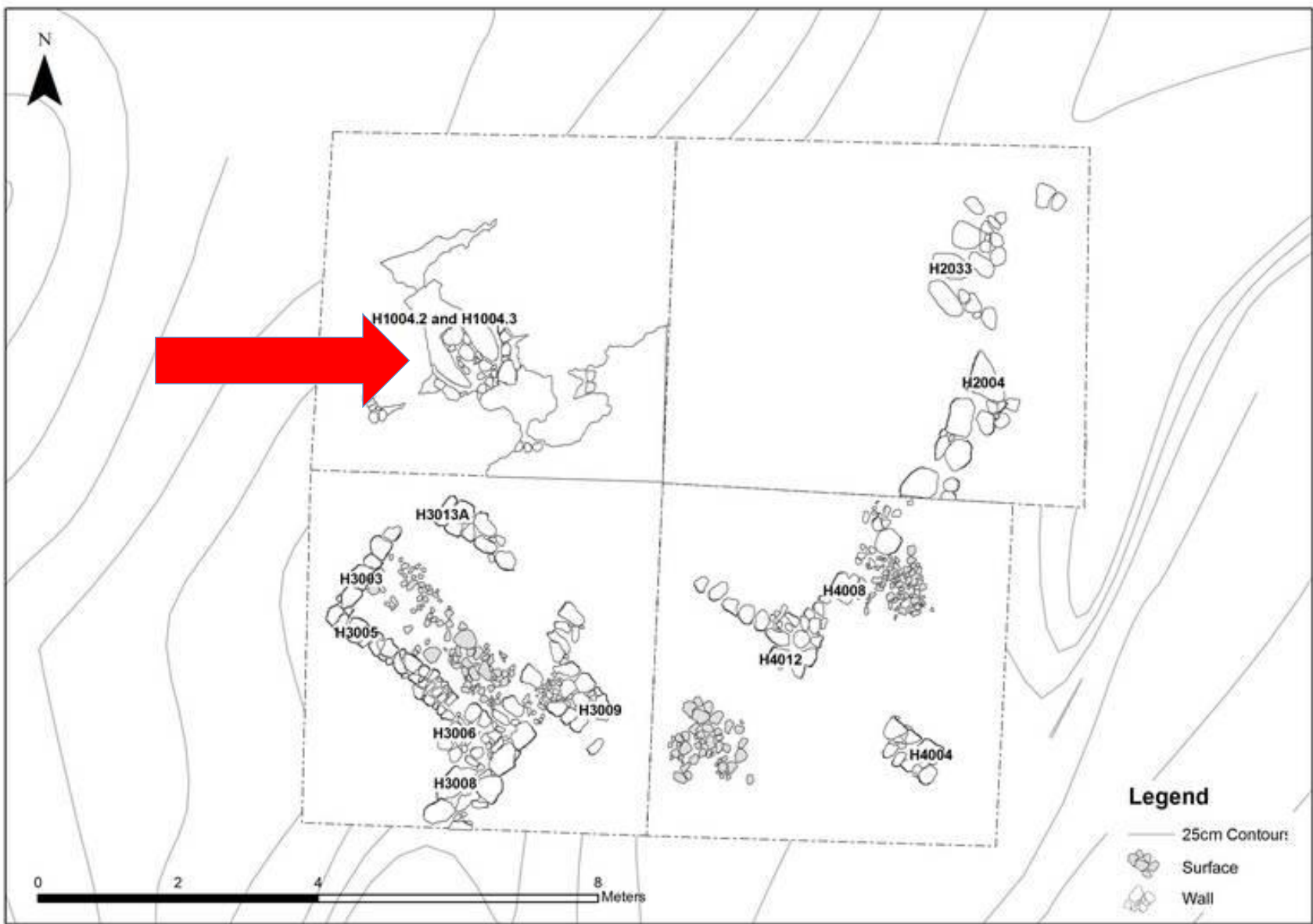




Jednou ze základních keramologických metod v Egeidě je **PETROGRAFICKÁ ANALÝZA**. Typologie je až na druhém místě.

Prepalatial Crete













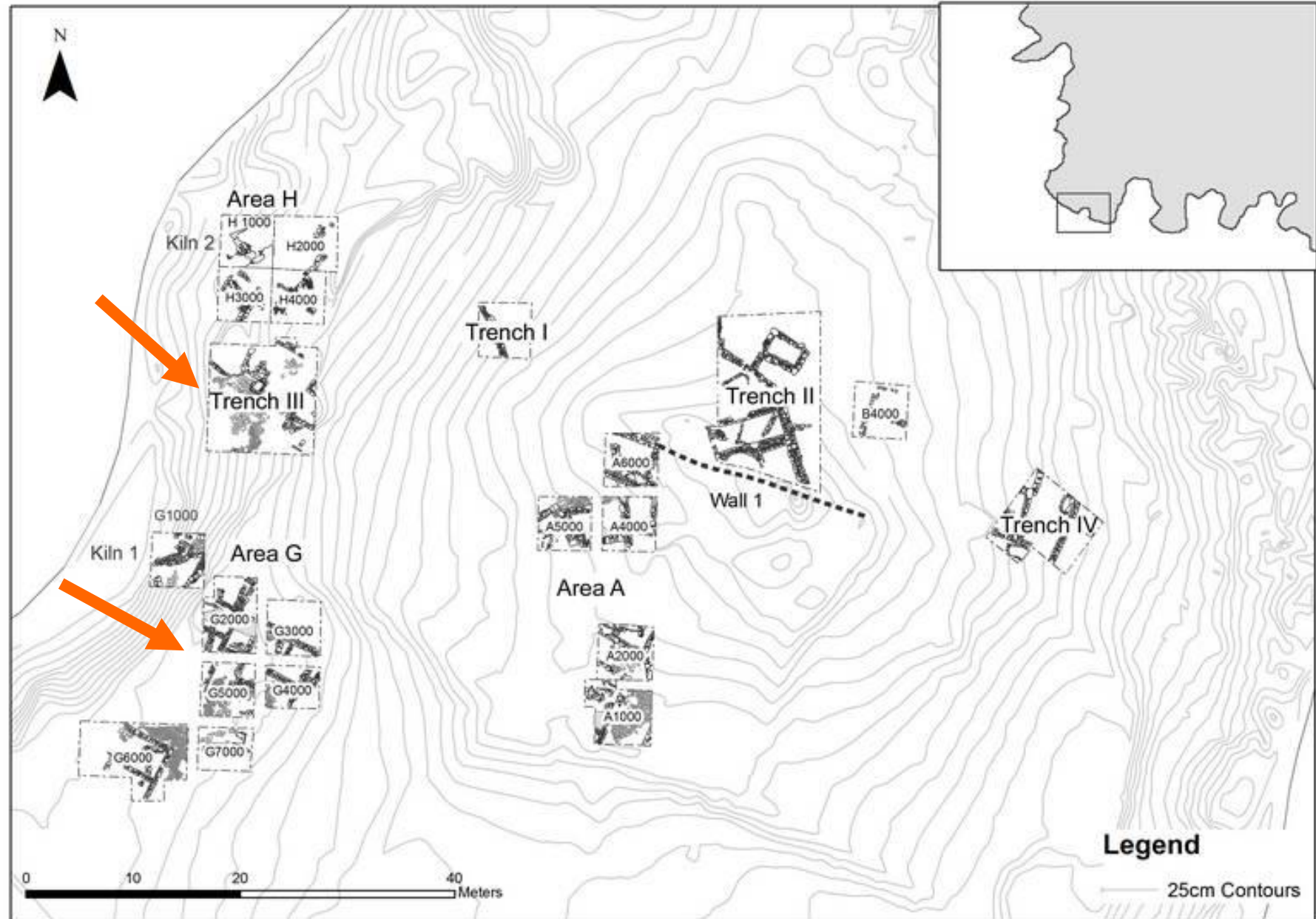
David Breeckner
Protopalácové období



Matěj Pavlacký
Předpalácové období

Neopalatial period

Rebecca Megarry



Nádvoří novopalácového víceprostorového domu byl překryt tzv. tsunami depozitem. V některých částech domu byl nalezen také popílek ze santorinské sopky, jejíž erupce přerušila osídlení na lokalitě.





Součást kanalizačního systému

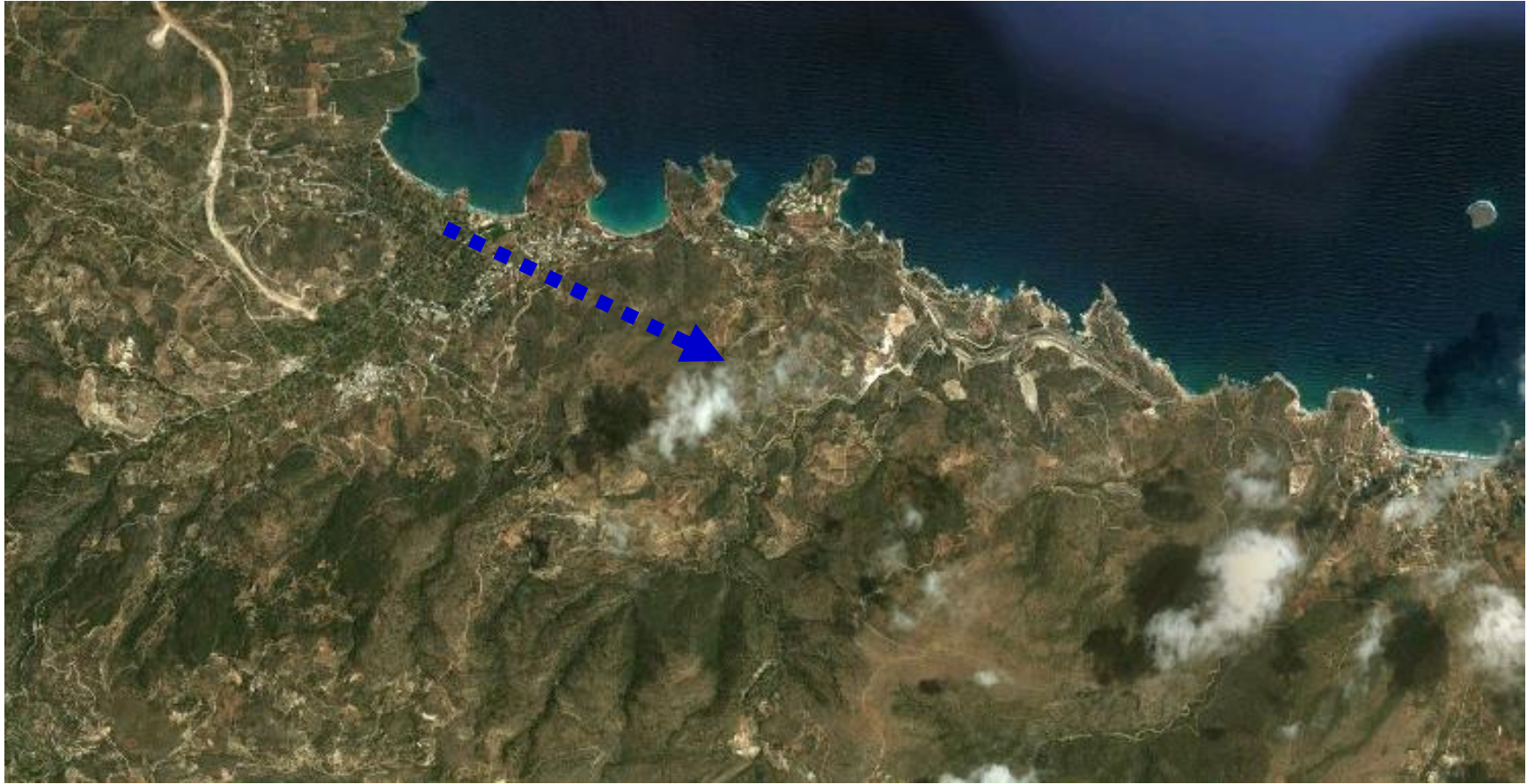




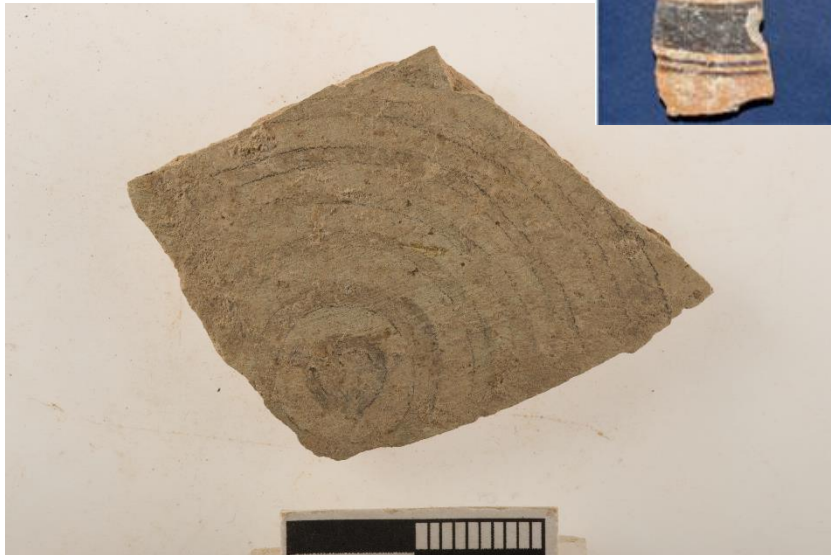
3-D scann rythonu identifikujícího prezenci svatyně

Rozsah novopalácové aglomerace





Early Iron Age



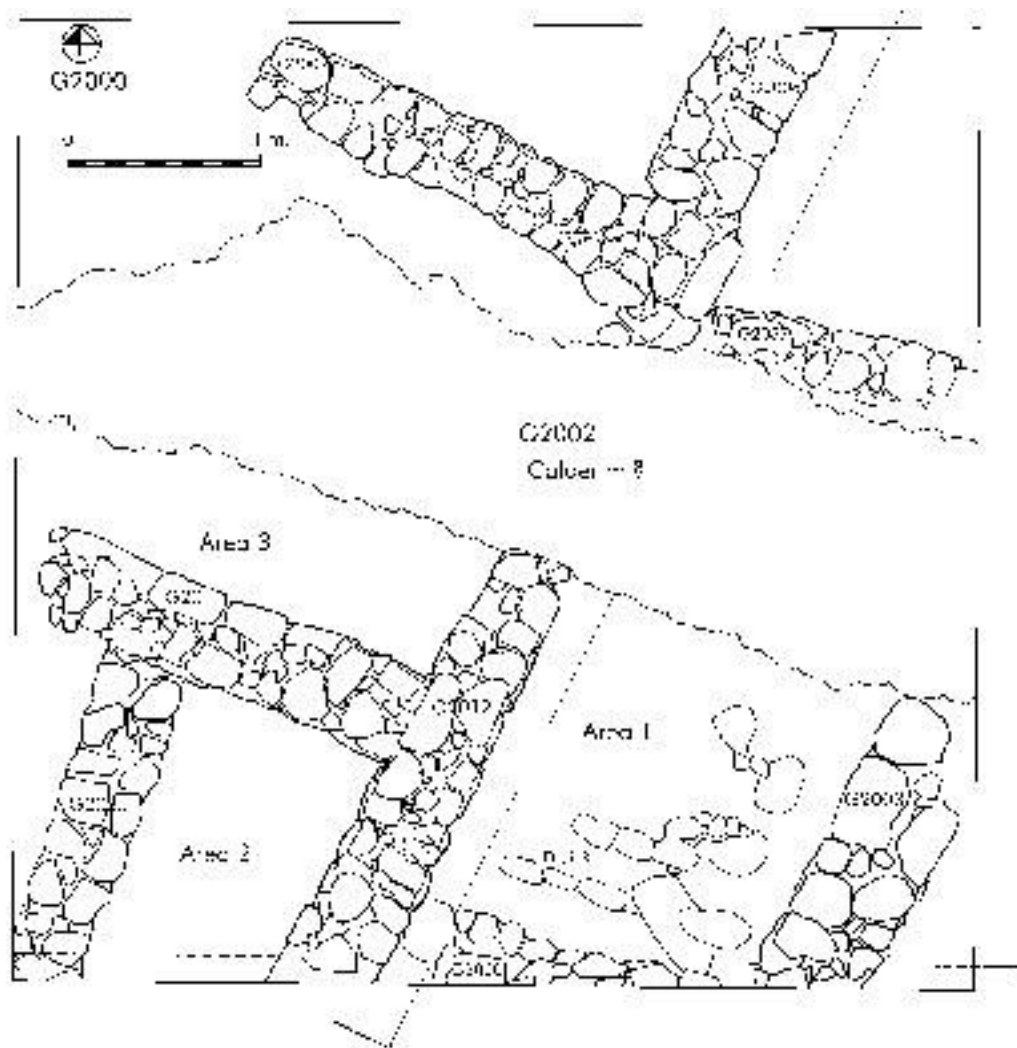


Classical Greece

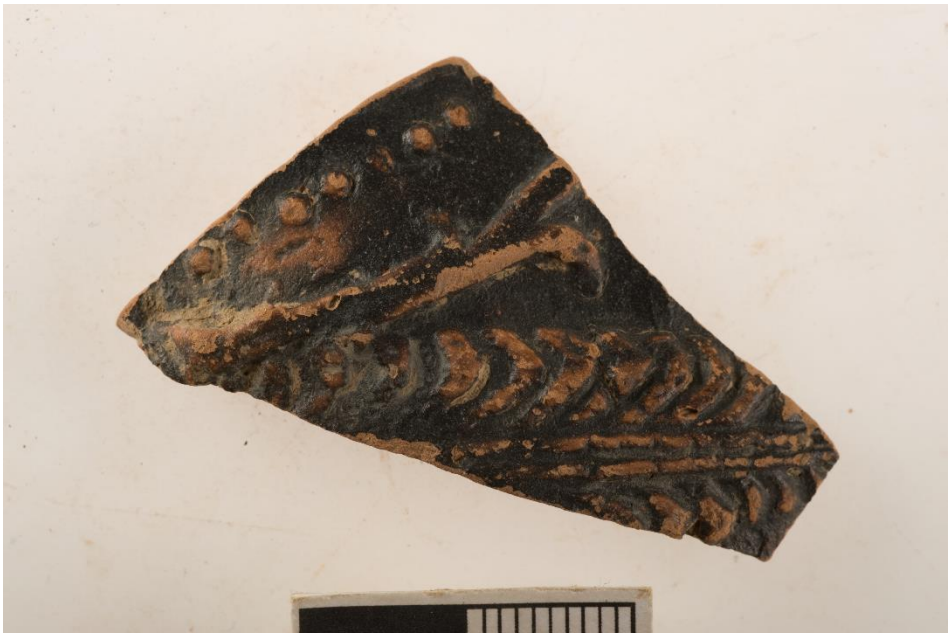


Brice Ericson

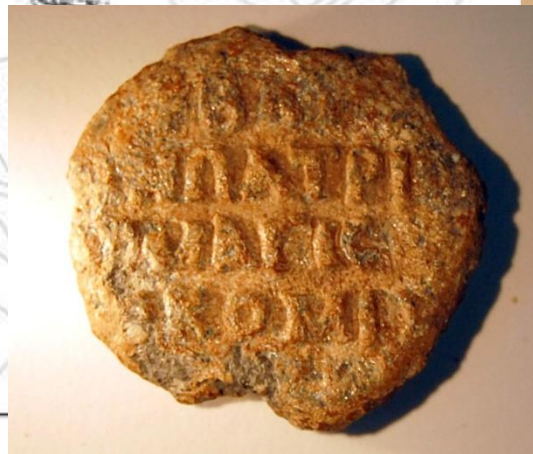
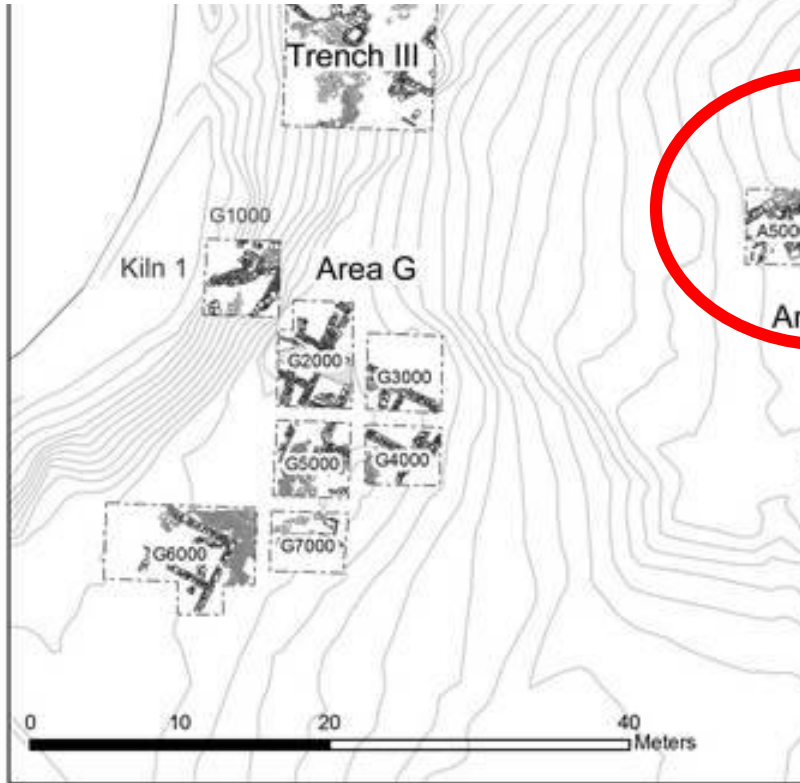
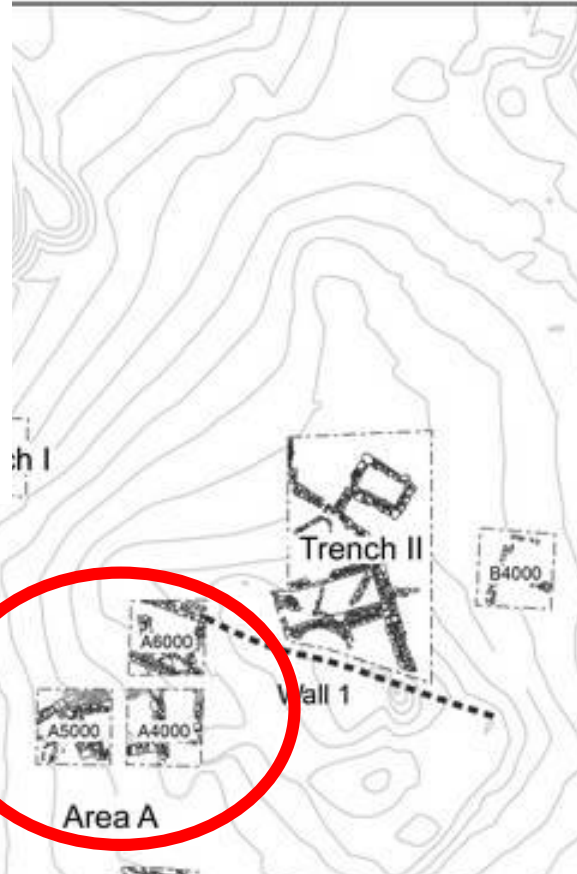
Hellenistic city (Istrona)



Ivett Navratilova



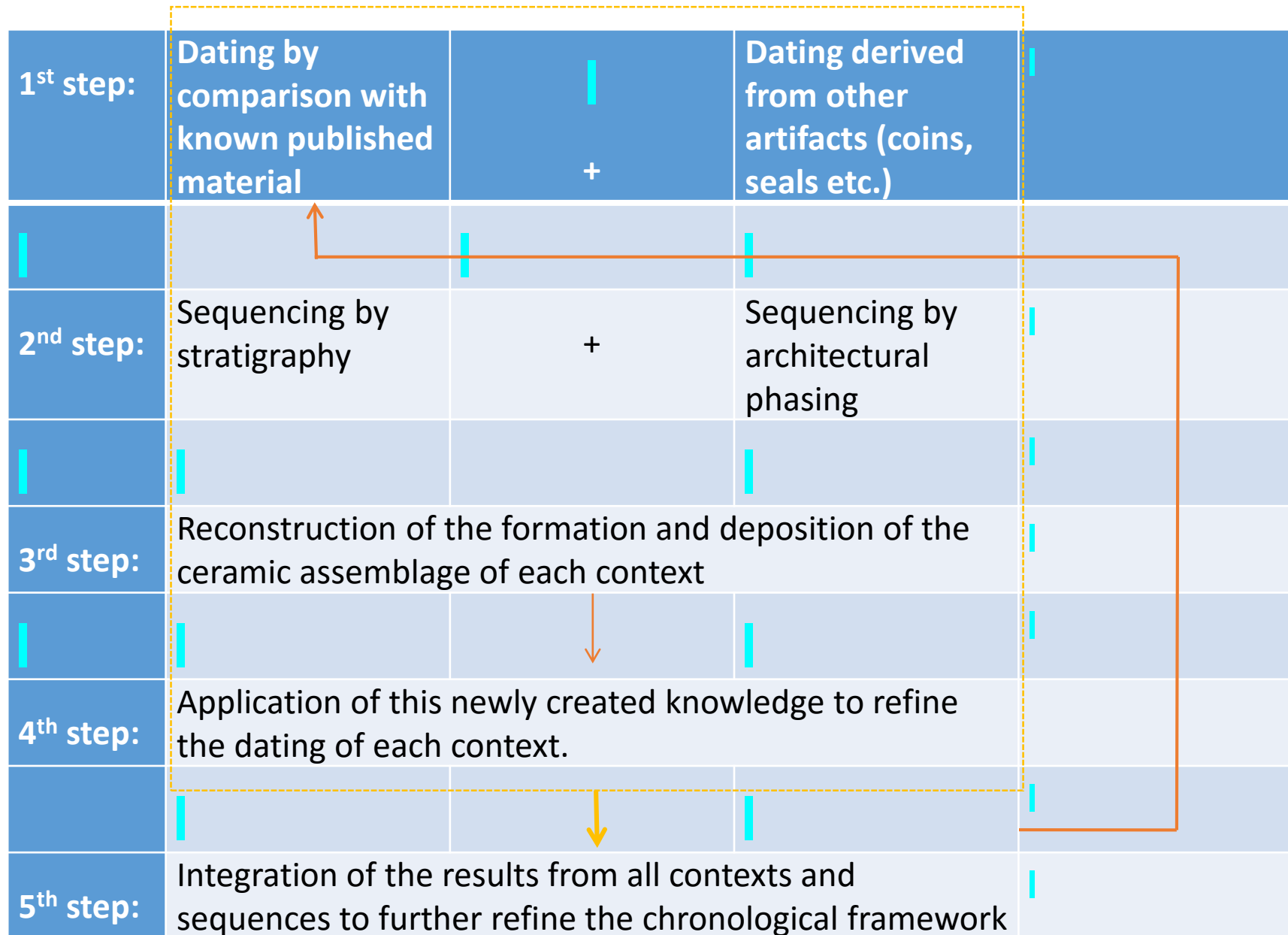
Raná byzantská perioda



- Priniatikos Pyrgos je jednou z nejdůležitějších byzantských lokalit na Krétě (vedle Gortýny, Itanu a Pseiry)

Byzantine archaeology

- The regional archaeology of the Byzantine period is a relatively new research field, at least by comparison with Aegean prehistory and Classical archaeology. Some archaeological studies were undertaken during the nineteenth and early twentieth centuries, but systematic excavation, study and publication of Byzantine remains in Crete effectively only began around 1980 (Gortyn, Elevation, Pseira, Chania).
- Even when major ecclesiastical structures (mainly Early Byzantine basilicas) were excavated on multi-period sites, the pottery and other finds were often neither studied nor mentioned in contemporary publications.

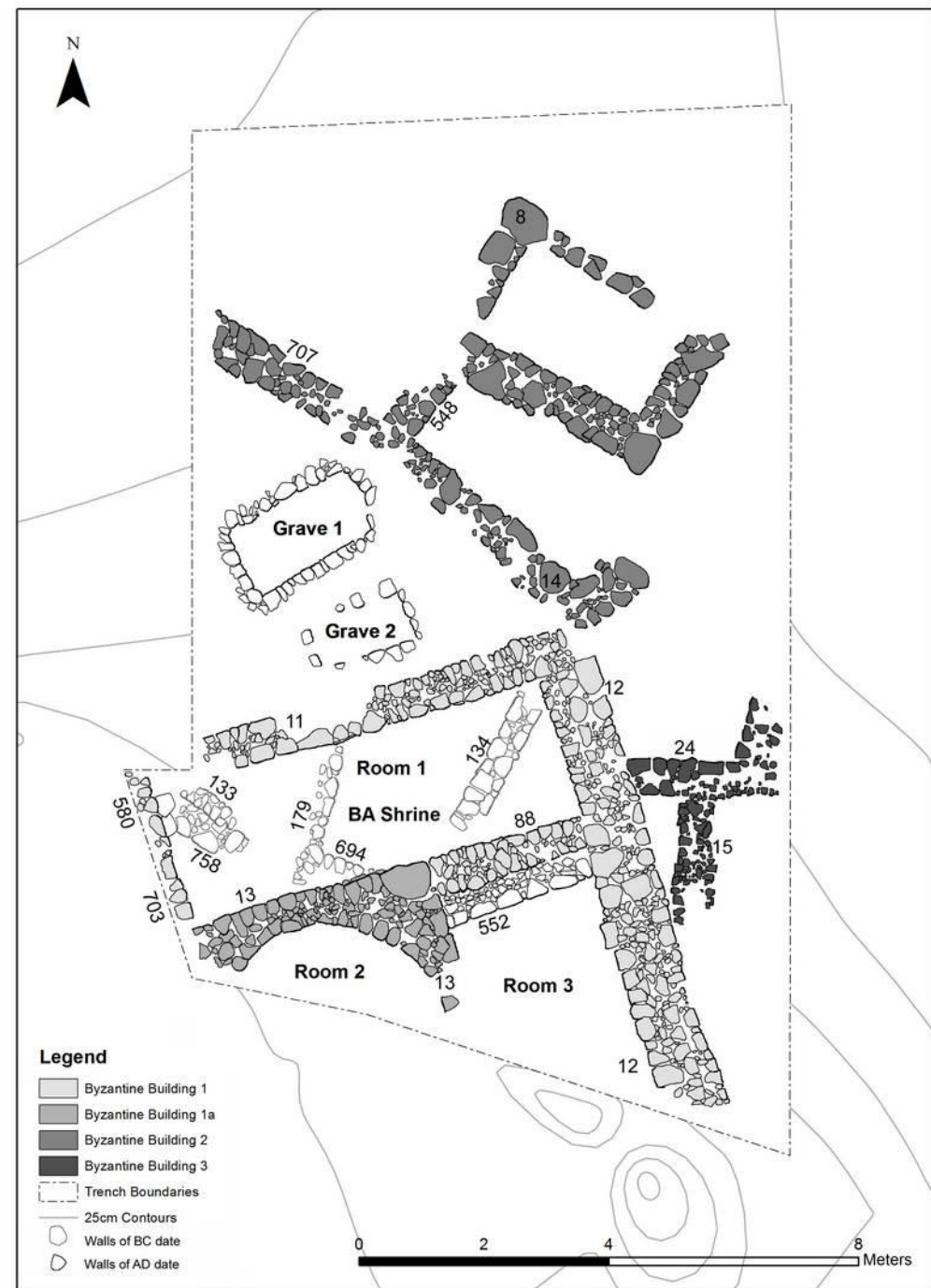


Roman Empire, Identity and Arabs...





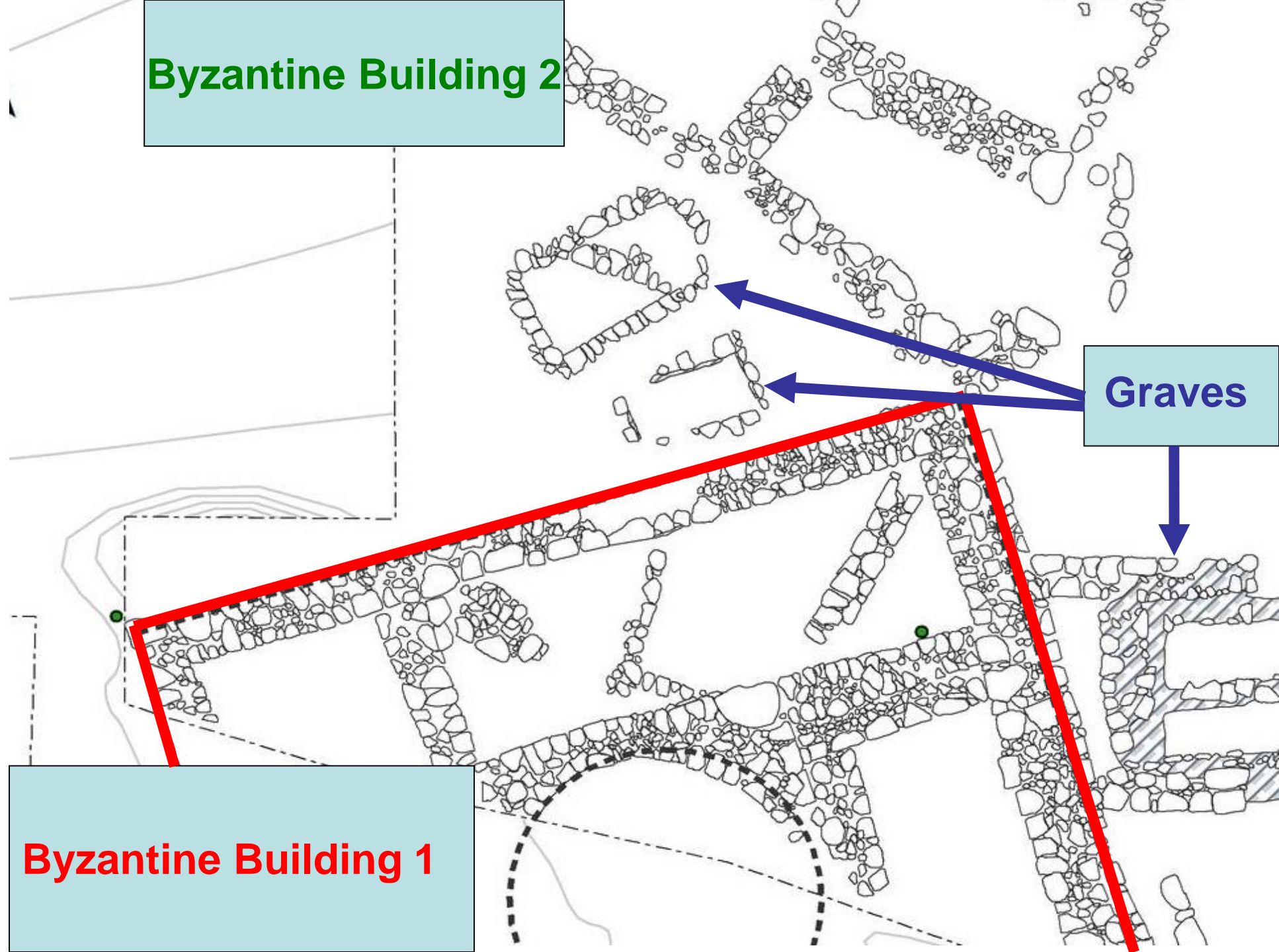
Trench II



Byzantine Building 2

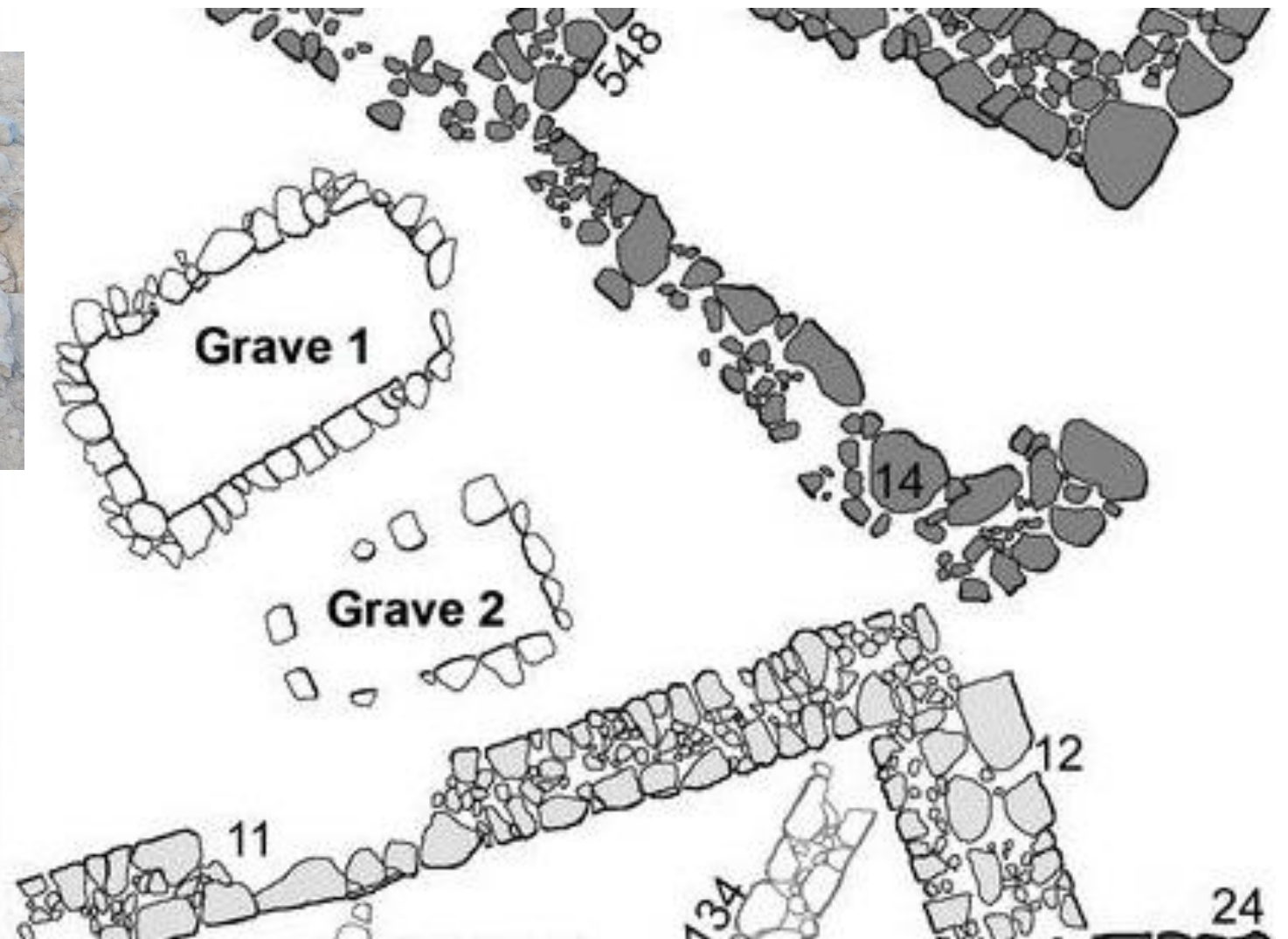
Graves

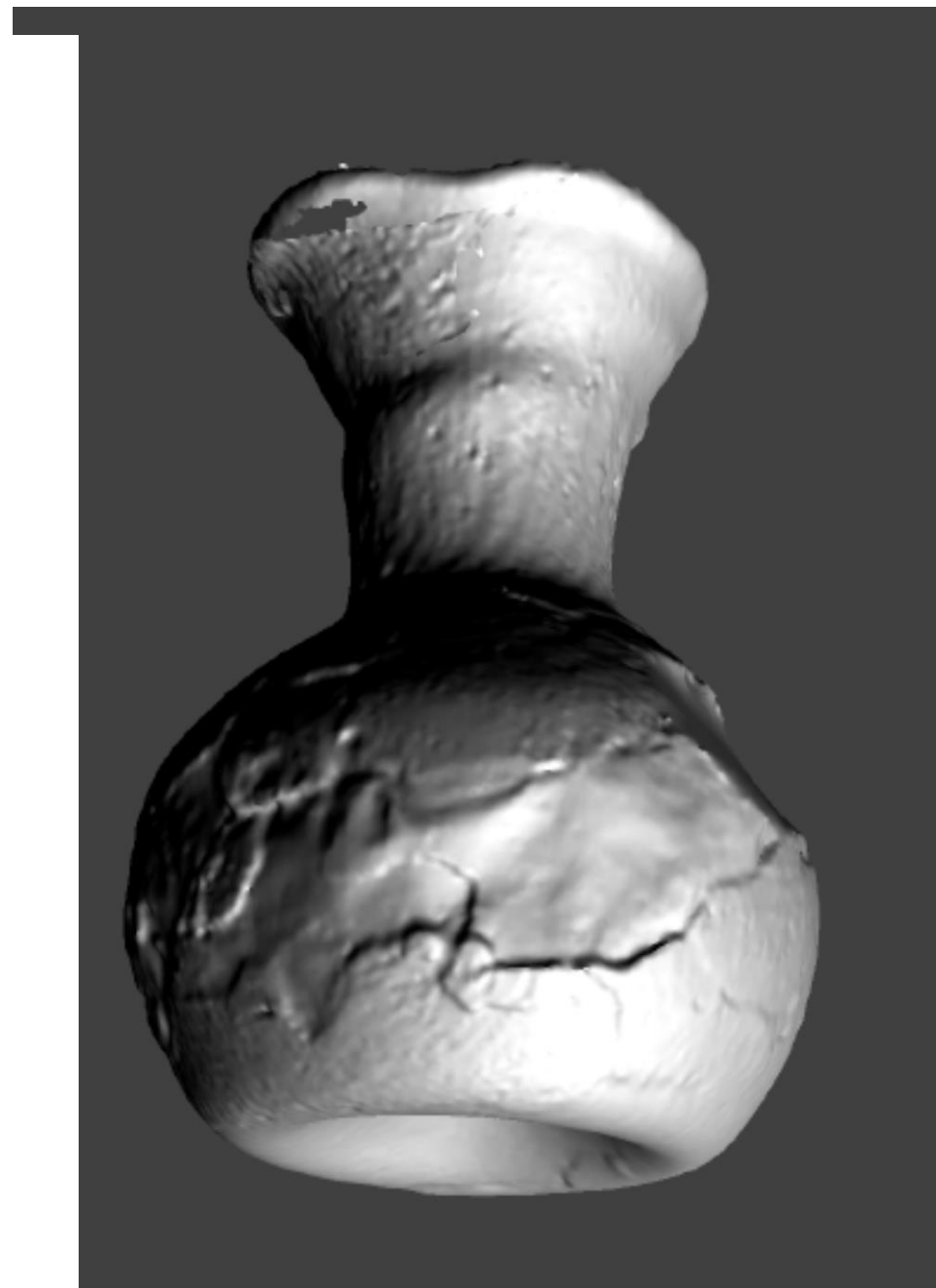
Byzantine Building 1





Grave 1







Room 1

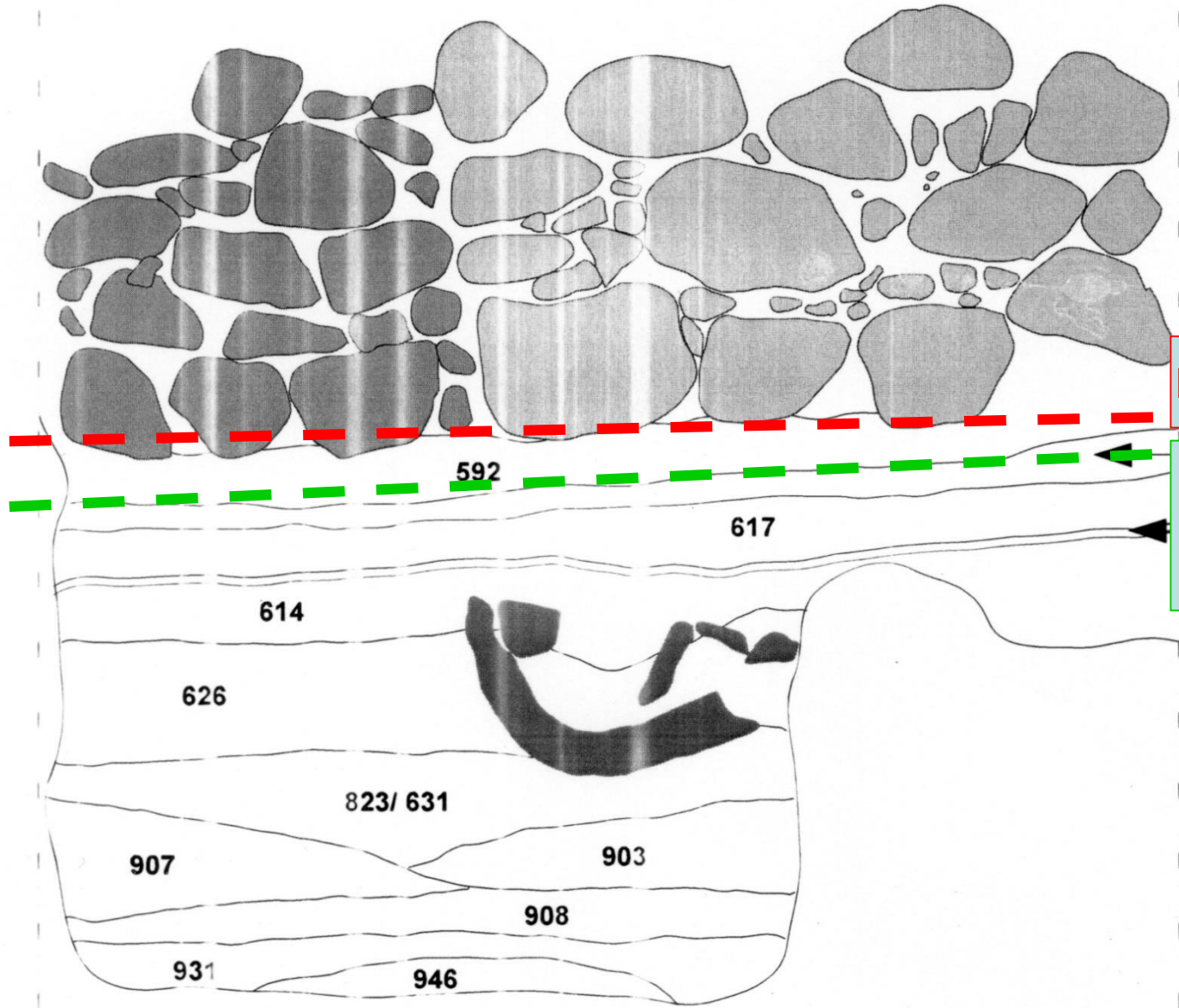


Floor deposits C26 and 87:

- Area: 2,2m X 6m
- Fill: ca 5 m³
- ca 10.000 sherds
- ca 100kg

N

S

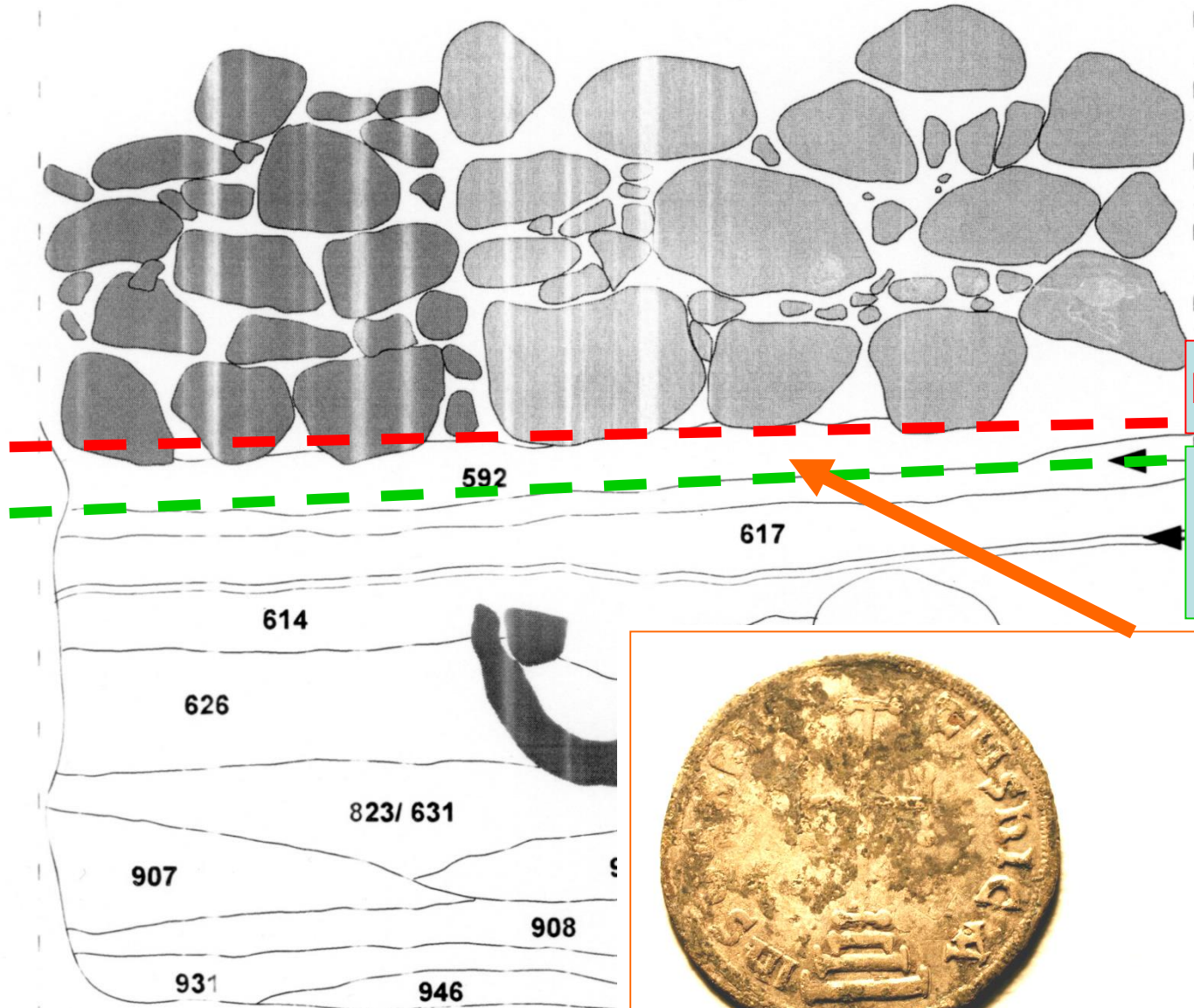


Floor level of C26(592)

Floor level of C 87
(616,617)

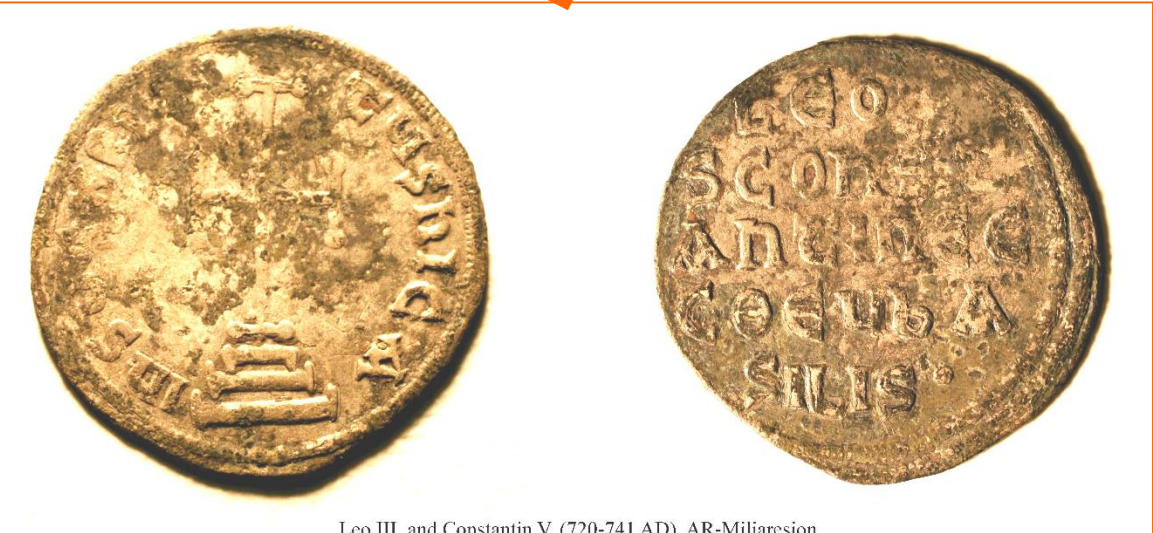
N

S



Floor level of C26(592)

Floor level of C 87 (616,617)



Leo III. and Constantin V. (720-741 AD). AR-Miliaresion

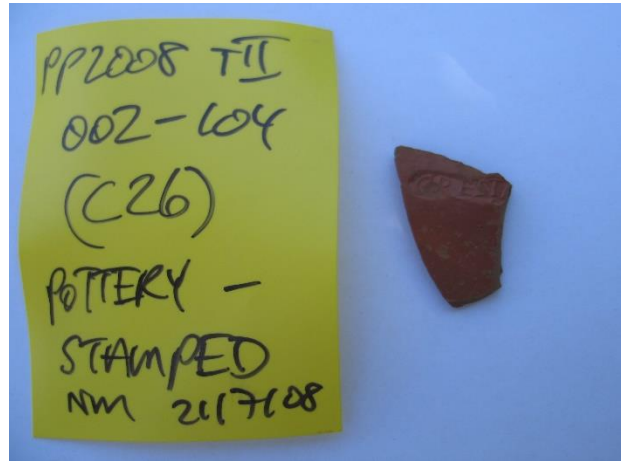
Floor C26(592) level

PP009 8/7
C582 post
exc.
C592 pre
exc.





2)







[+] ΙΩΑΝΝ
Η ΠΑΤΡΚΕ.
ΙΩΜΑΓΙΣΤΡ(Ο)
Σ ΚΟΜΙΤΗ
Τ ΚΟΡΤΗΣ

may be another line

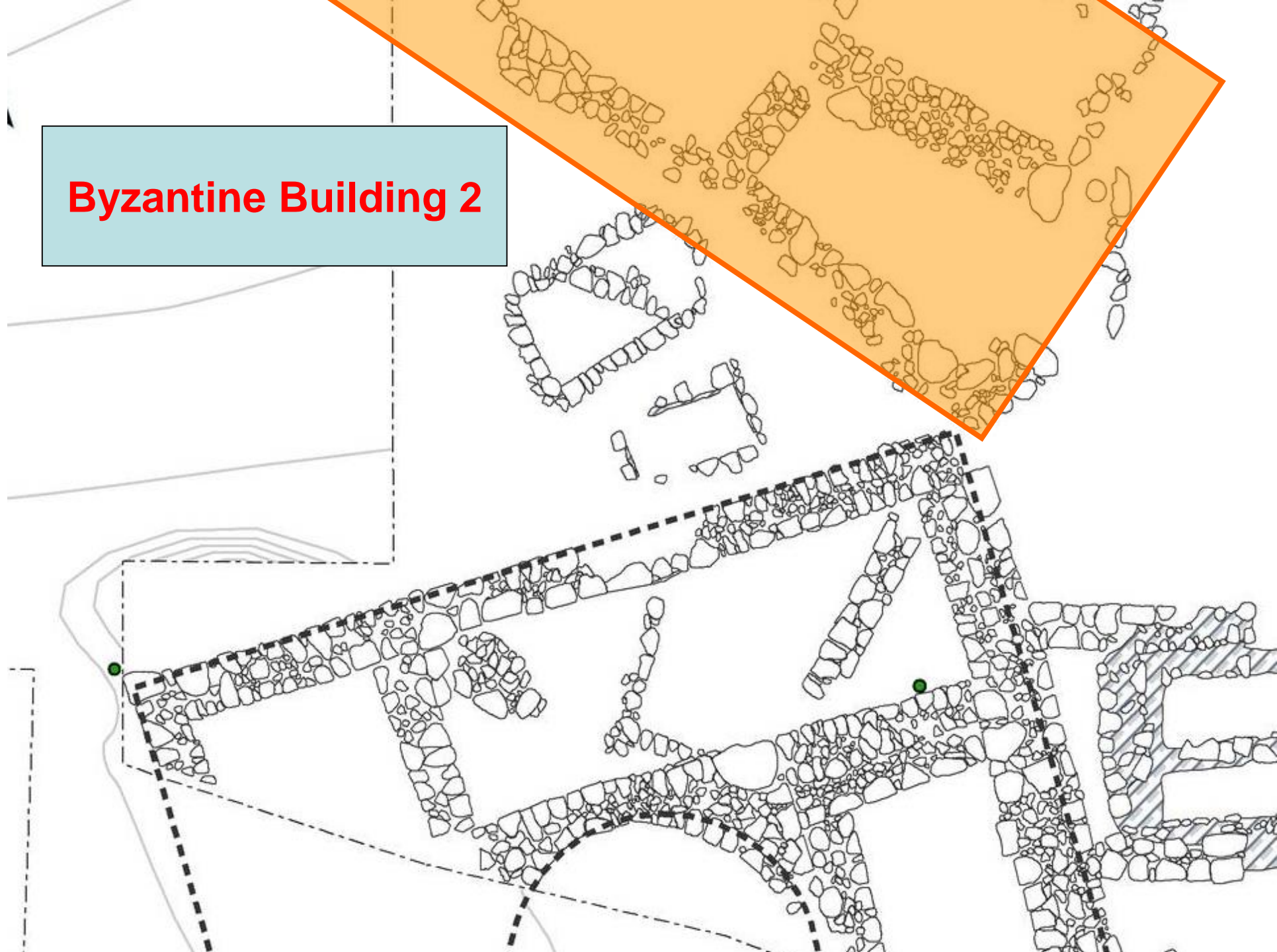
mid 9th c.?

John Petrikios

Magistros

Count of the
Tent

Byzantine Building 2



Byzantine Building 2

Room 101





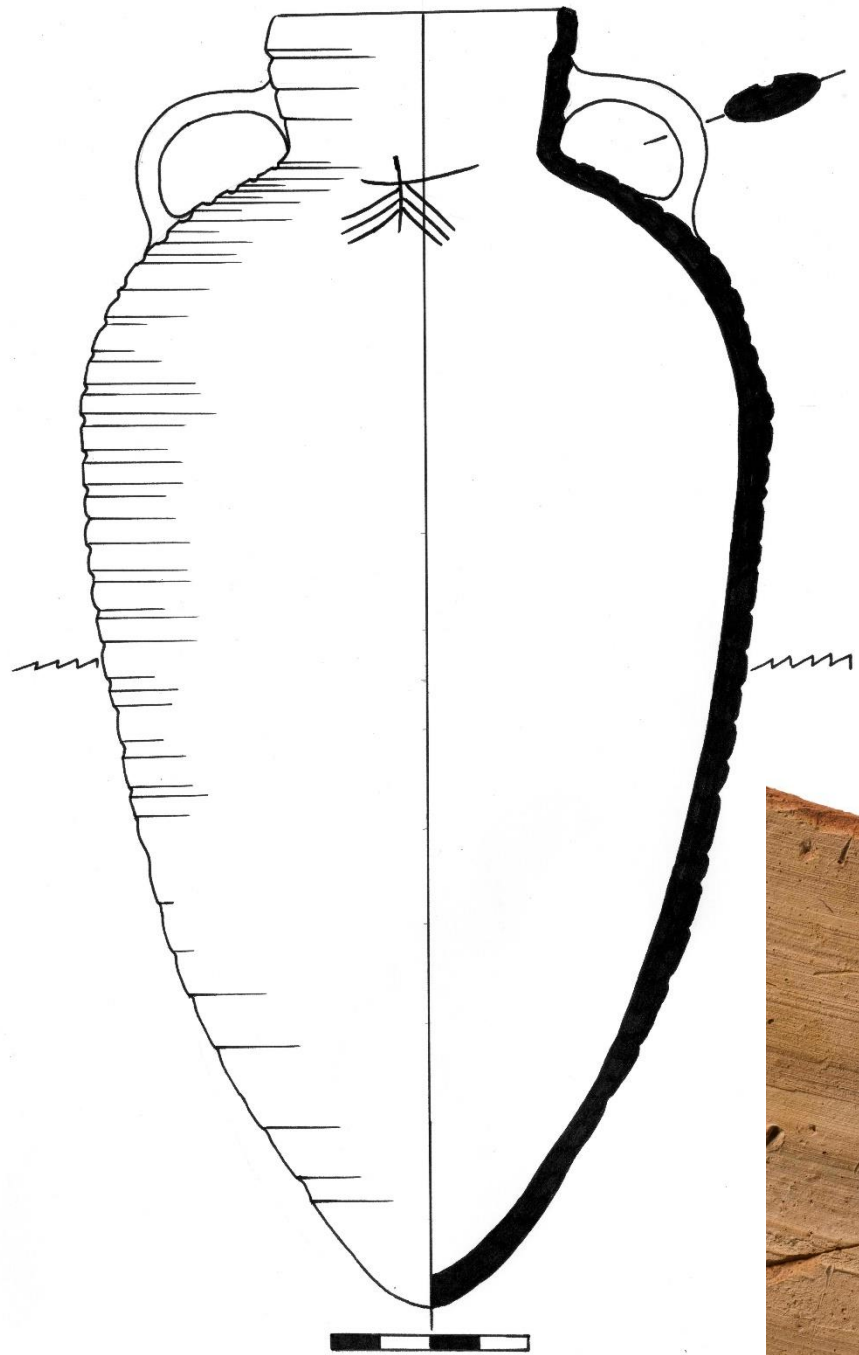


PP 09 1/7
C544
C545
II
002-462
post-ex











Elevation

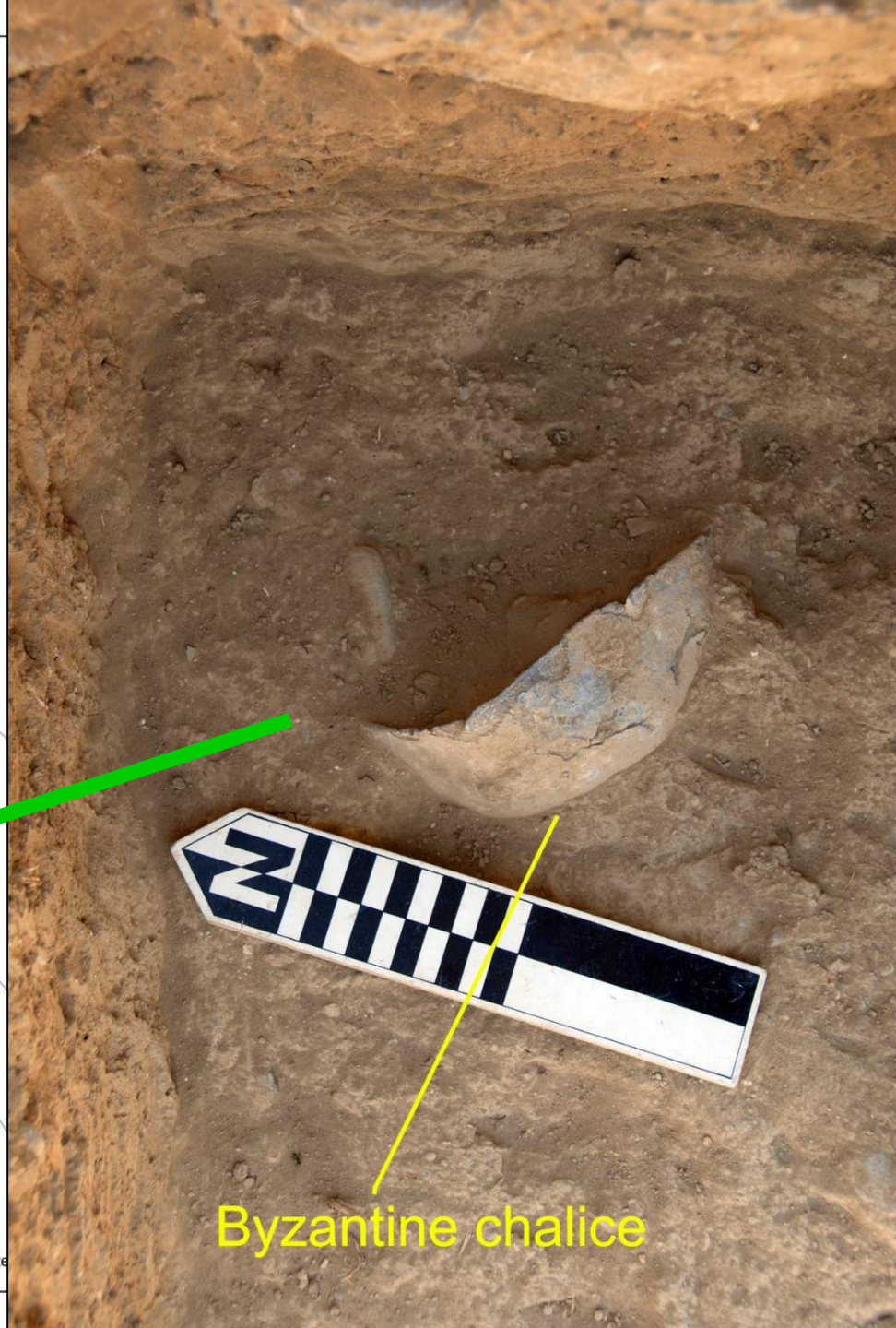
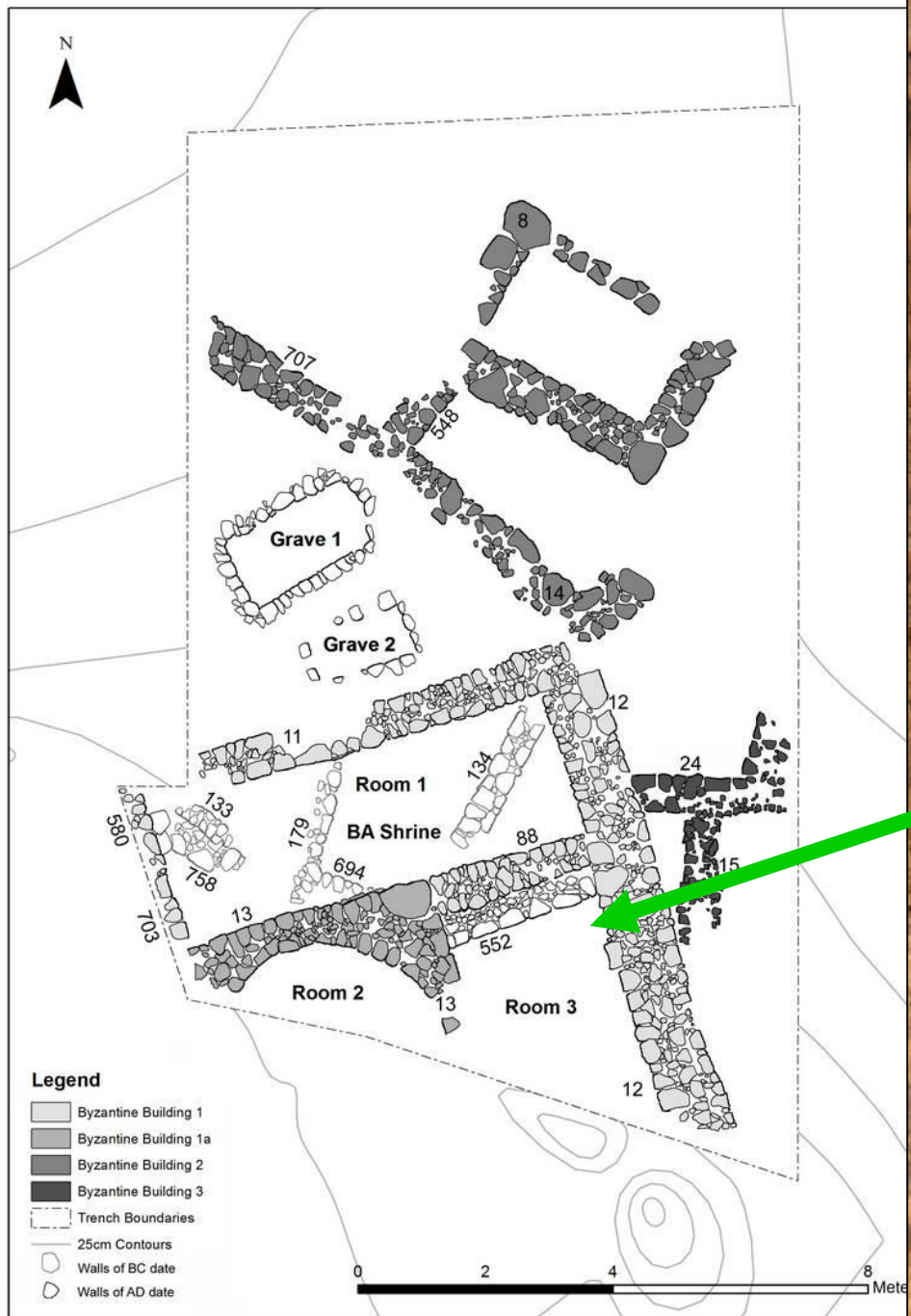


1st C B.C. (Italy)



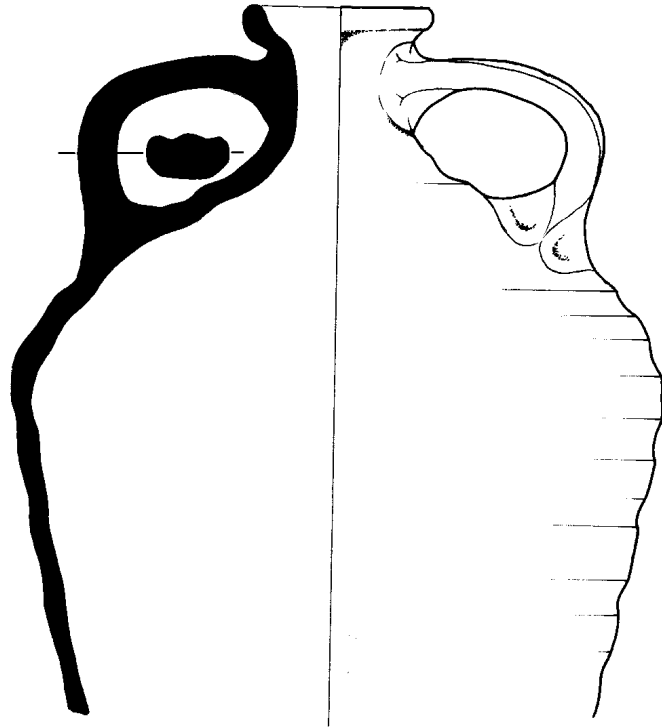
Icaria







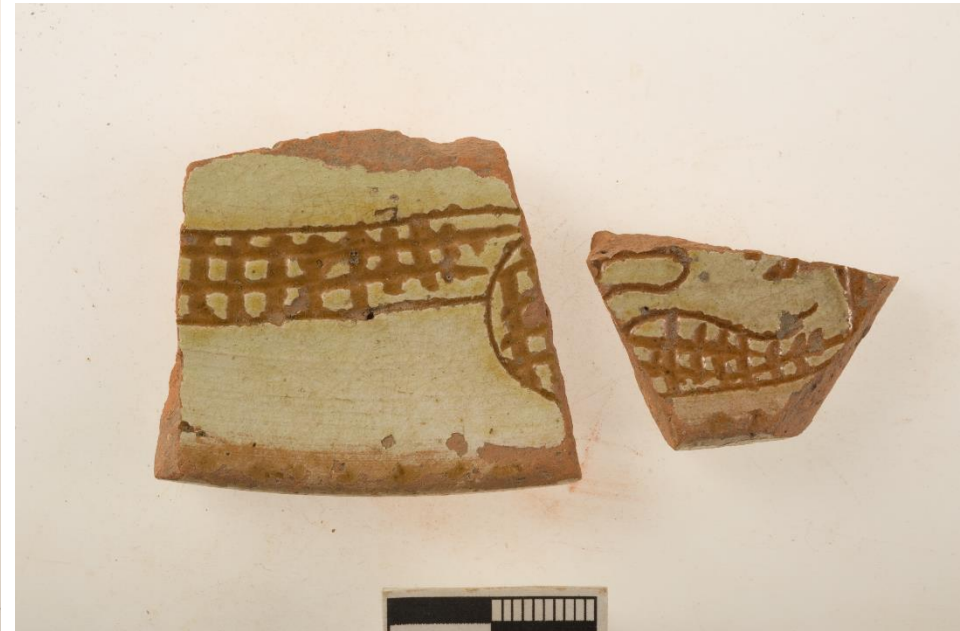
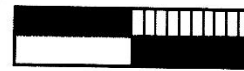
9 – 10th C amphora



08-5222
1:2



10th – 12/13th C AD



Coastal settlements of Mirabello bay



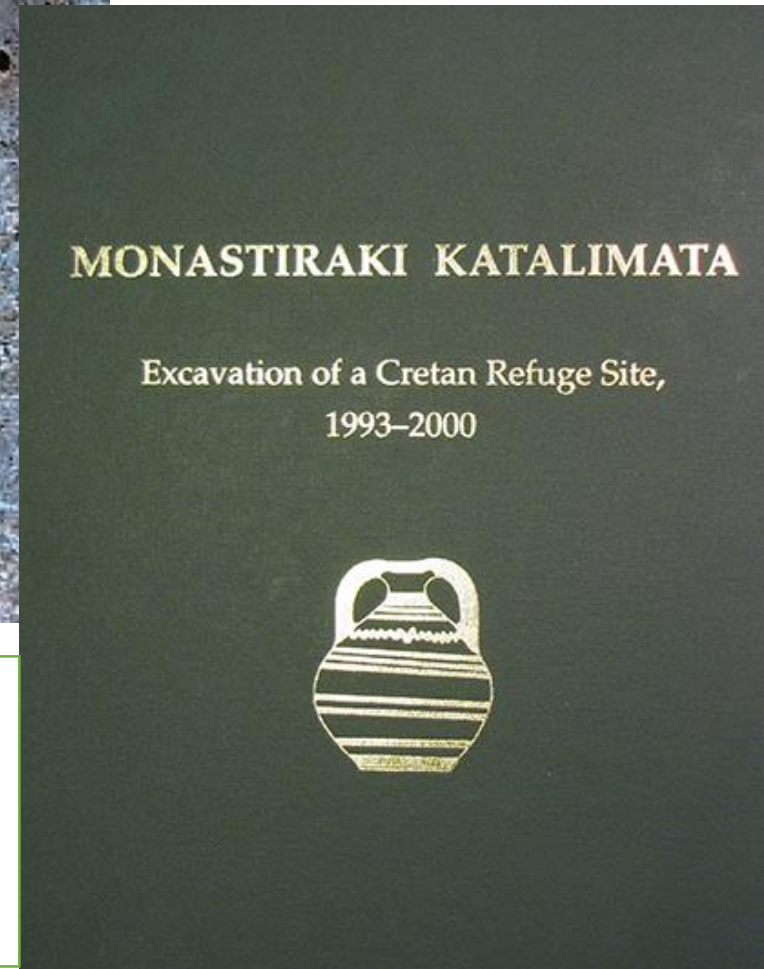
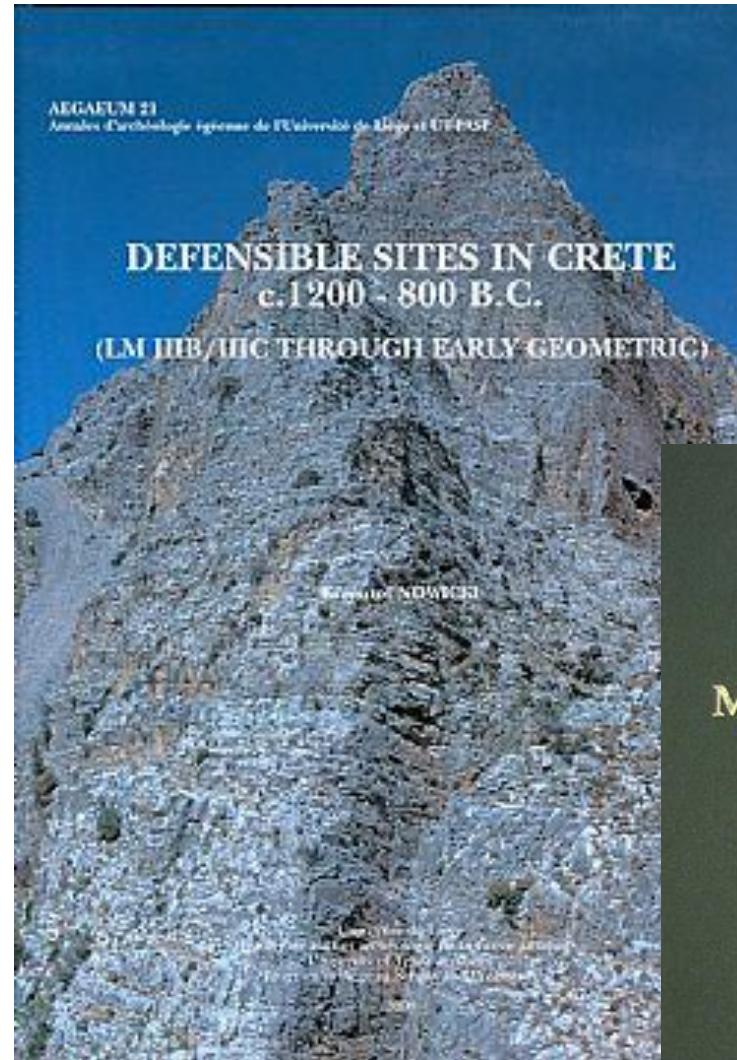
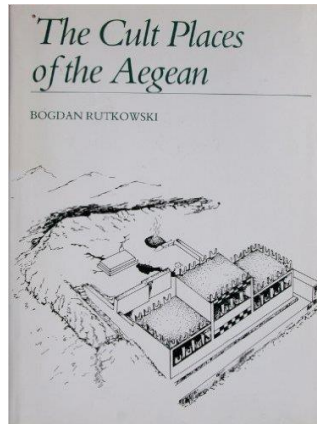
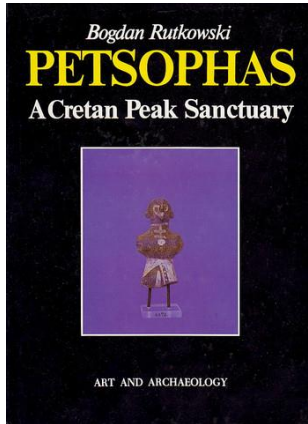
- traditionally dated up to mid 7th C AD

In general the written sources about Crete are very poor especially for the Early Byzantine period and the period of Arab conquest. Information about east Crete almost doesn't exist, although the previous periods offer a considerable amount of information.

The 5th C AD marks the beginning of an era of "silence and obscurity"), which lasted until the beginning of 13th C AD.

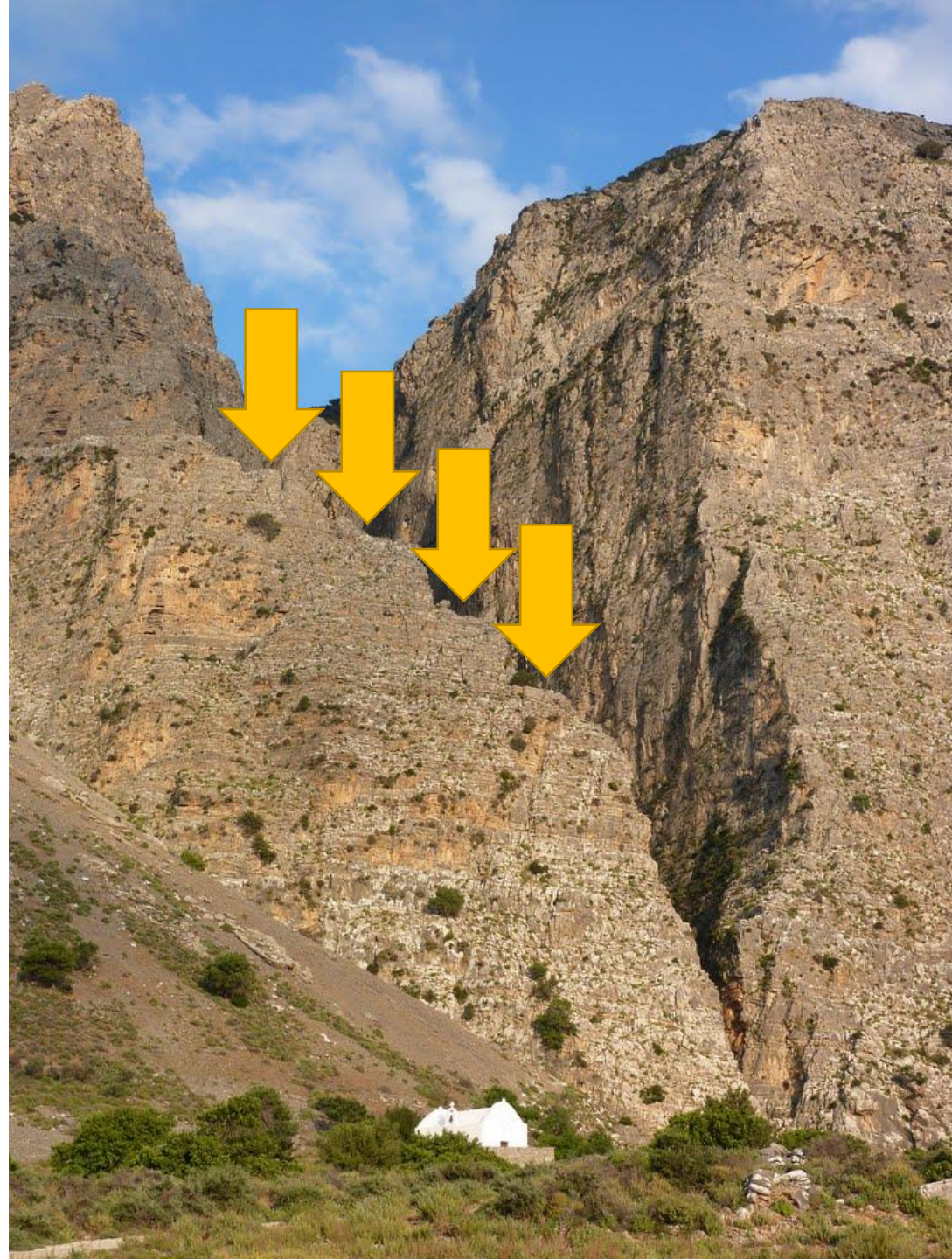
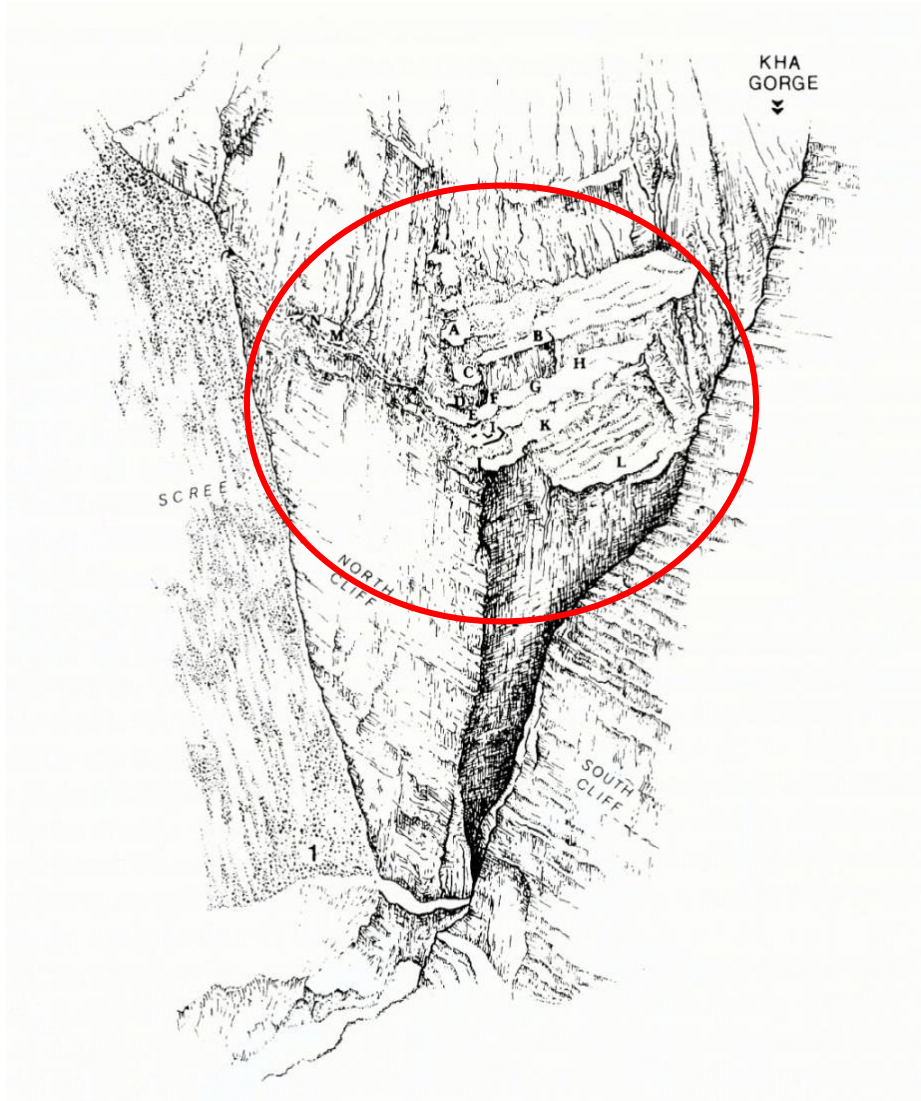
The main source for this period – **Synekdemos** - written by Hierocles Grammaticos (535) describes Crete as a self-governing province, ruled by a governor, bearing the title Consularius. The administrative, military centre and the residence of the Cretan Church was Gortyn. Synekdemos mentioned 22 cities in Crete and whose location is impossible for majority of them.

Krzysztof Nowicki



V LM IIIB se osídlení z pobřeží přesunulo do horských pásem. Předpokládáme podobný efekt i v 8. století n.l., v době ohrožení Kréty Araby.

Cha Gorge (Monastiraki – Katalimata)





Varipetro

















Malathyros













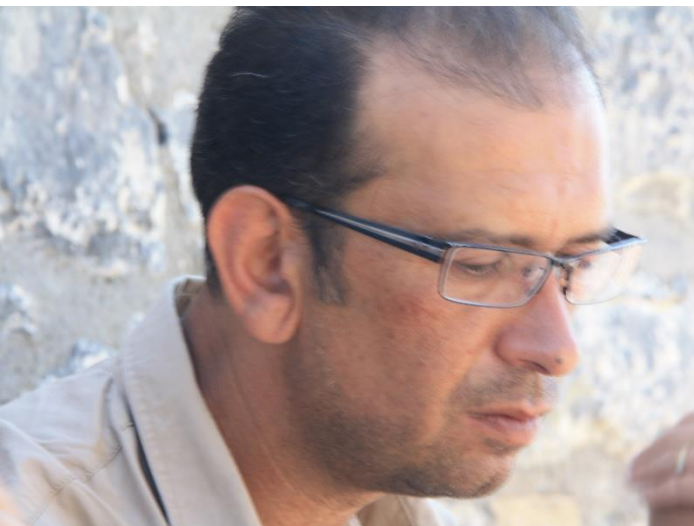
Topographical criteria of the Byzantine forts

1. Extremely difficult access from the coast
2. Particularly good view to the coast: possibility to control large part of coast
3. Accessible agricultural background
4. Display of the own position

- Different situation was in central Crete (Chandax and Messara)



Oxa



Manolis Klontzas

Projekt OXA navazuje na Priniatikos Pyrgos. OXA byla osídlena v těch obdobích, kdy osídlení na PP chybí.





Data SIO, NOAA, U.S. Navy, NGA, GEBCO
Image © 2013 DigitalGlobe
Image © 2013 TerraMetrics

Google earth















Data SIO, NOAA, U.S. Navy, NGA, GEBCO
Image © 2013 DigitalGlobe
Image © 2013 TerraMetrics

Google earth

Pre-Byzantine habitation

- Middle Minoan Peak Sanctuary
- Late Minoan IIIC – PG Refugee
- GP an Archaic periods
- Hellenistic Period



































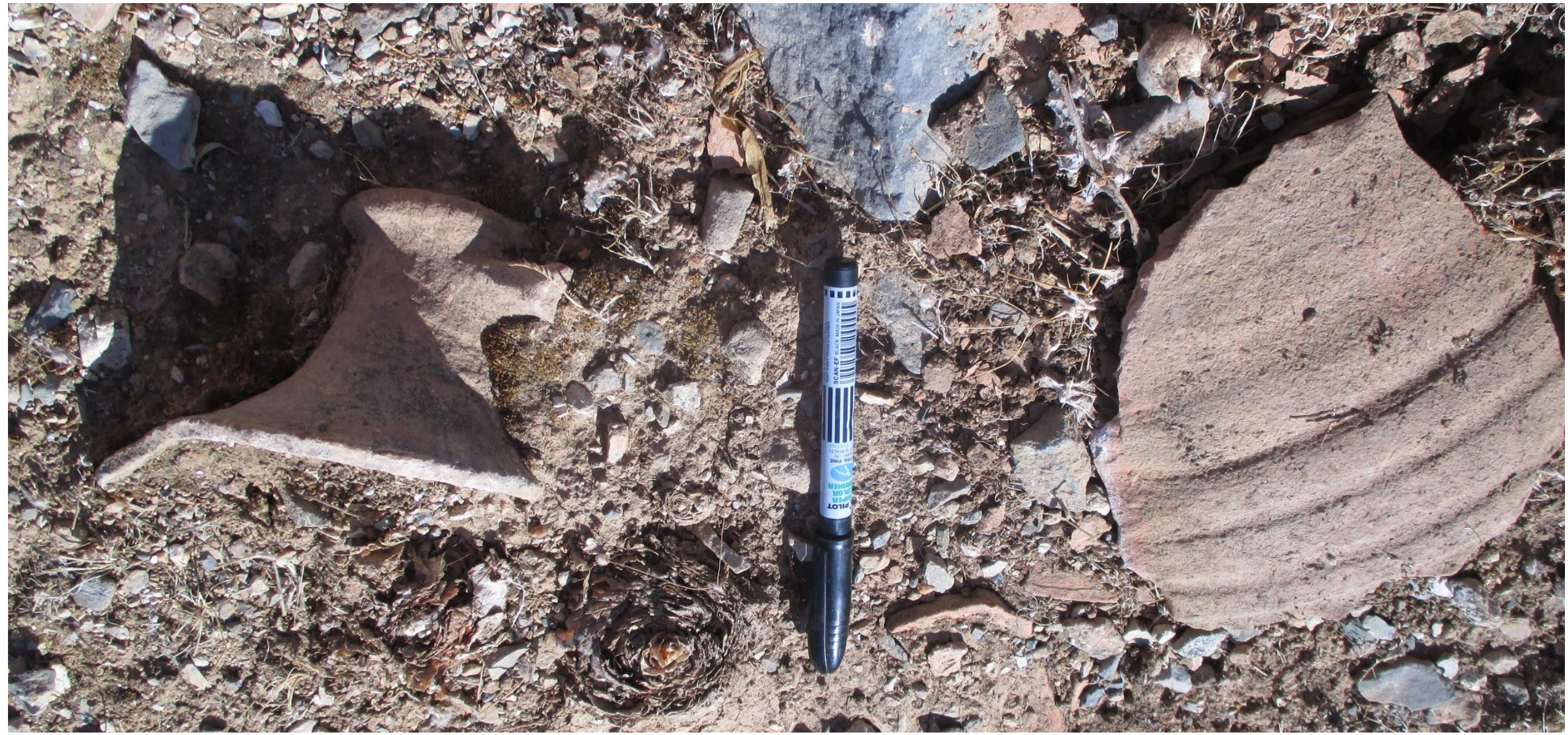


OXA CAT 028



OXA CAT 076

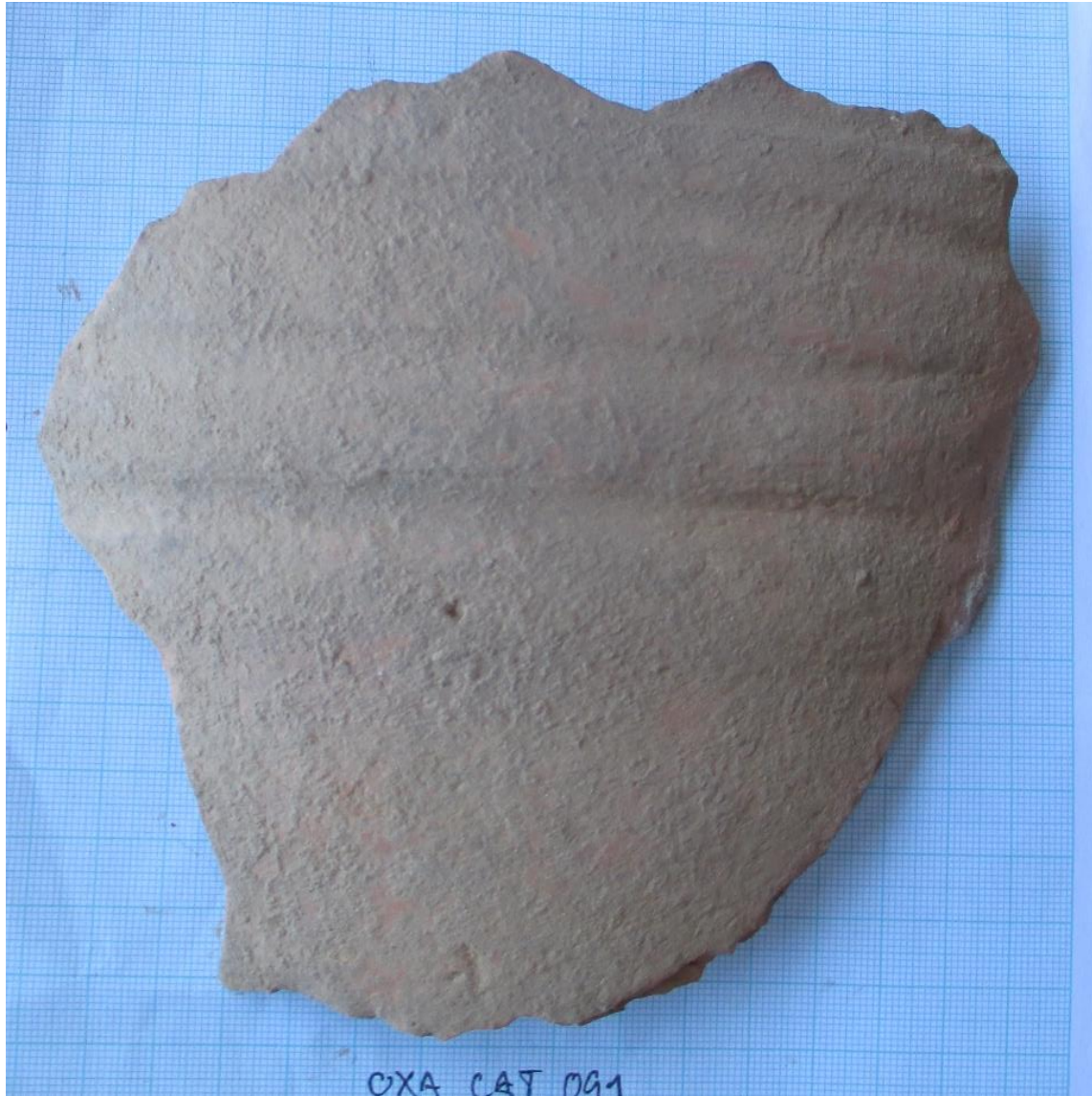






OXACAT 044





OXA CAT 091



OXA CAT 089

OXA CAT 091

~~CAT 038~~

oxa CAT 039





Conclusions:

- Is Oxa a typical site or an exception?
- When exactly was it founded?
- Who has initiated its foundation?
- What position had Oxa within the empire, or in Crete and in the above described process?
- How was it organized?
- How and why the function of the site was changing in the pass of time?
- It is clear that these and many others – both more detailed and more general – questions can be construed as evidence that archaeology is a crucial historical discipline in this case. Every human activity was historically conditioned and dependent. Garbage, plain pottery, small, non-elite, or nameless communities all played their role in the historical process. Their study is real contribution to general historical study.
- The study of the Byzantine archaeology of Crete is at a much earlier stage than that of Cretan prehistory, for which more than 100 years of intensive research, many excavated sites, publications, expertise and considerable financial investment successfully balances the lack of written information. Today we cannot conclude that the silence of literary sources excludes the possibility of further information and understanding. We face the challenge of investigating Late Roman and Byzantine Crete equipped with new methods, options and approaches.

Perspectives and goals for the further seasons

- Combination of different type of data:
 - Excavation of Priniatikos Pyrgos, Oxa
 - Survey in large region
 - Study of similar sites in other parts of East Mediterranean (Cyprus, SW Turkey)



**Acknowledgment to both teams'
members**



**Thank you for your
kind attention!**

