

Keltische Münzproduktion in Böhmen und Mähren

(LT C2/D1-D1/D2)



Münzproduktion der Boier in LT D nördlich von Donau



Stradonice



Třisov



Hrazany



Závist



České
Lhotice



Staré
Hradisko



Bratislava



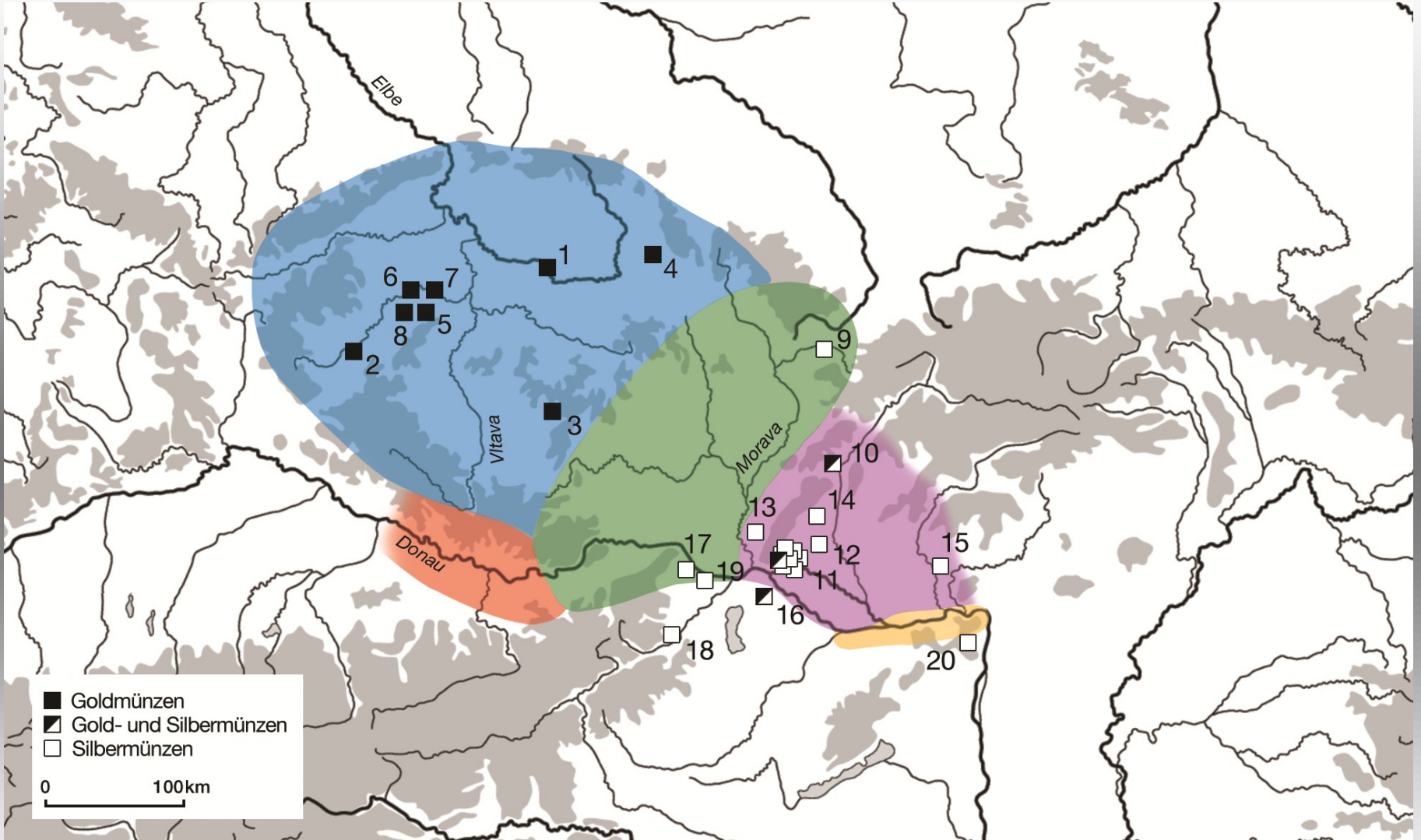
Oberleiserberg

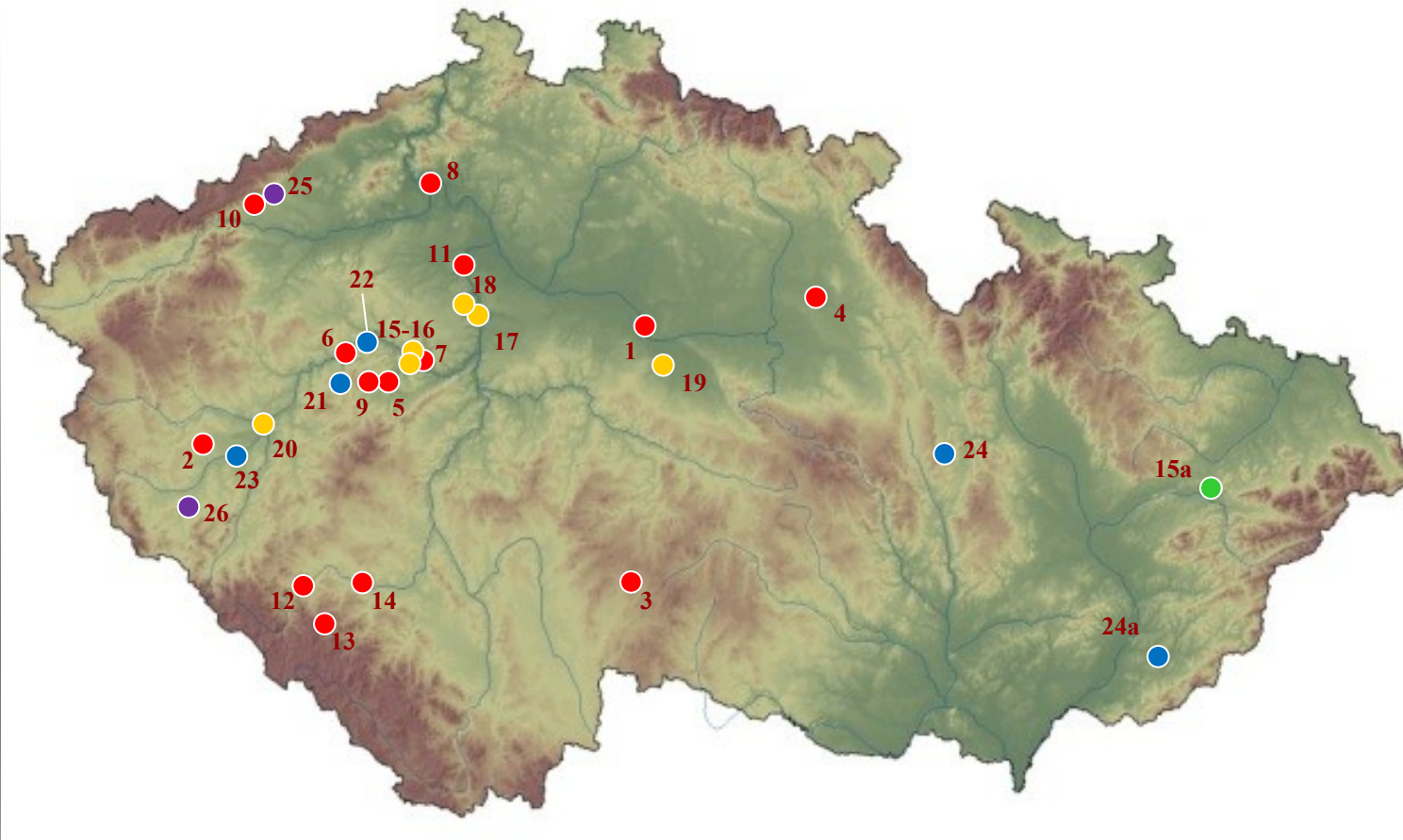
Keltische Oppida in Böhmen

(LT C2/D1-D1/D2)



- 20) Stradonice
- 9) Závist
- 7) Hrazany
- 11) Nevězice
- 23) Třisov
- 4) České Lhotice





Hortfunde - LT D1-D2:

- **Boier (AV):** 1. Starý Kolín; 2. Westböhmen; 3. Leskovice; 4. Ledce; 5. Osov; 6. Podmokly; 7. Stradonice; 8. Litoměřice; 9. Broumy. 10. Černovice; 11. Vepřek; 12. Sušice; 13. Kašperské Hory; 14. Novosedly; 15. Vrbičany; ● **Boier (AR):** 15a. Brumov;
- **Südbayern und Thüringen (AV+AR):** 15.-16. Stradonice; 17. Praha 3-Žižkov; 18. Chýnov; 19. Kutná Hora; 20. Plzeň;
- **Noricum und Ostkelten (AR):** 21. Zbiroh; 22. Křivoklát; 23. Holýšov; 24. Jevíčko; 24a. Hodonín
- **Galien (potin):** 25. Chomutov; 26. Domažlice.

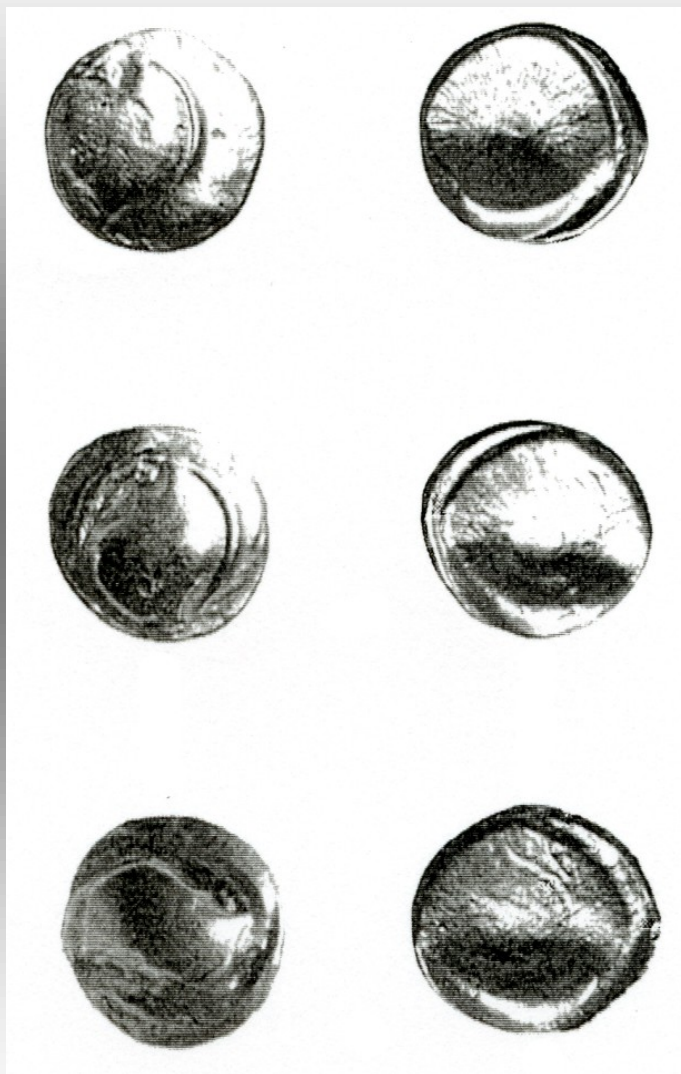


STARÝ KOLÍN – 197 + 107 St.

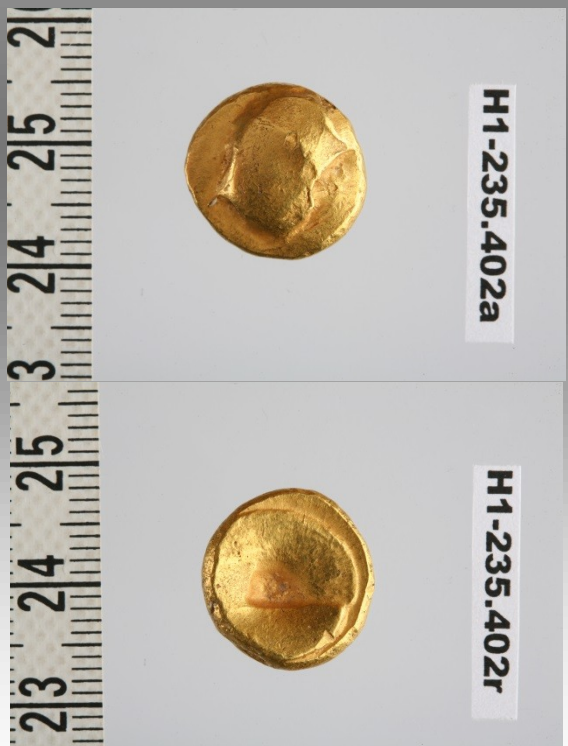
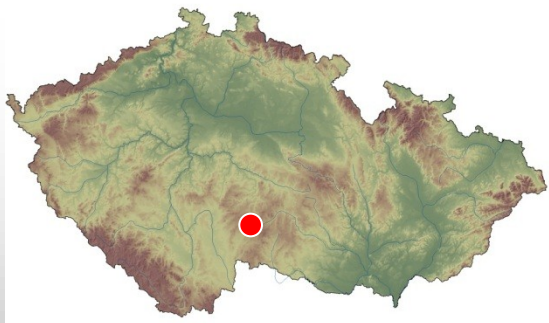
STARÝ KOLÍN



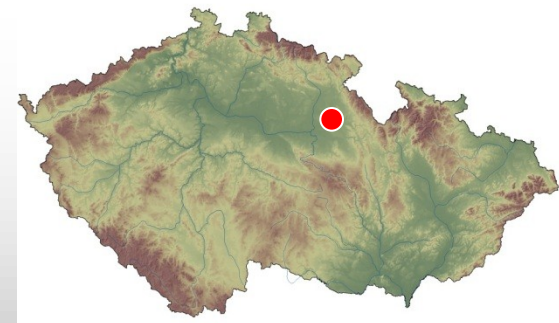
Westböhlen, vor 1900 (38 + XX St.)



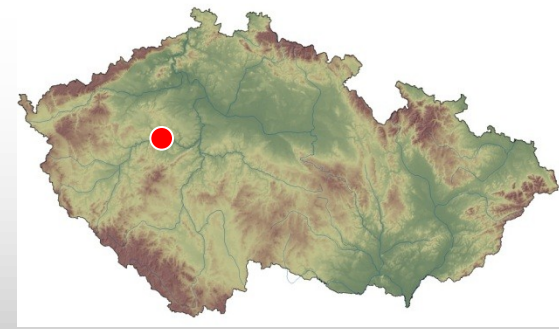
LESKOVICE 1923 (27 + X St.)



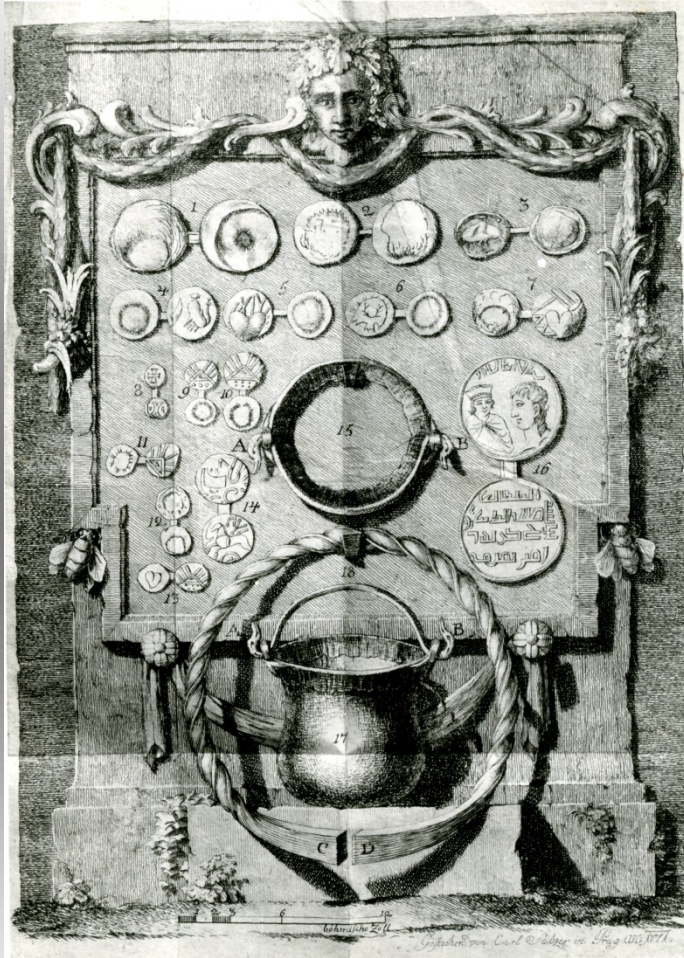
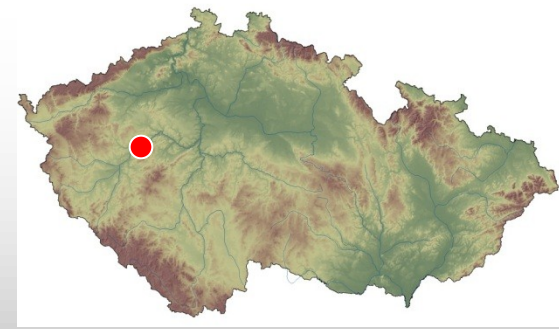
LEDCE 2012-2013 (5 St.)



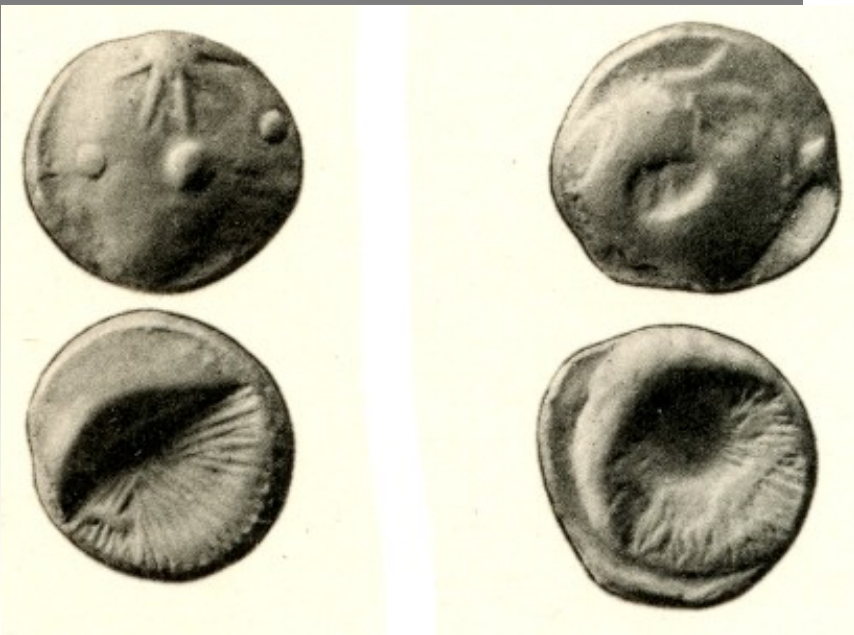
OSOV 1 – Schatzfund, um 1860 (3 + XX St.)



PODMOKLY 1771 (um 7000-10000 St.)



Podmokly 1771



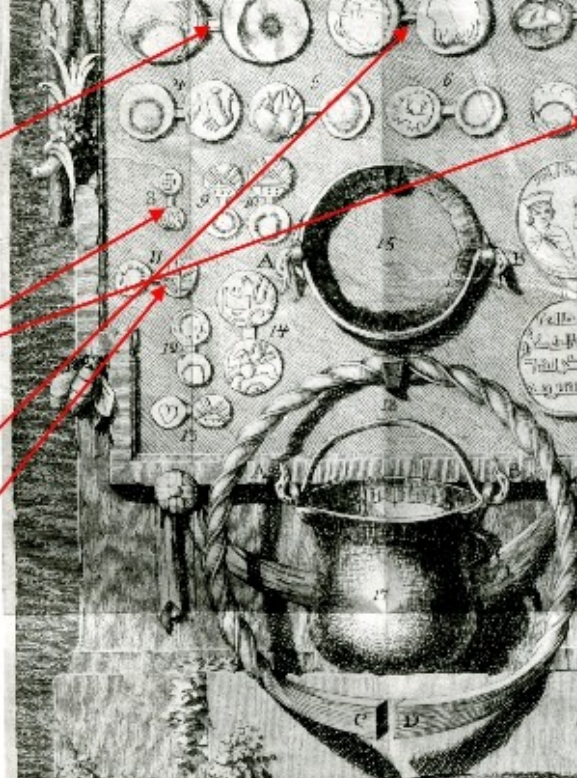
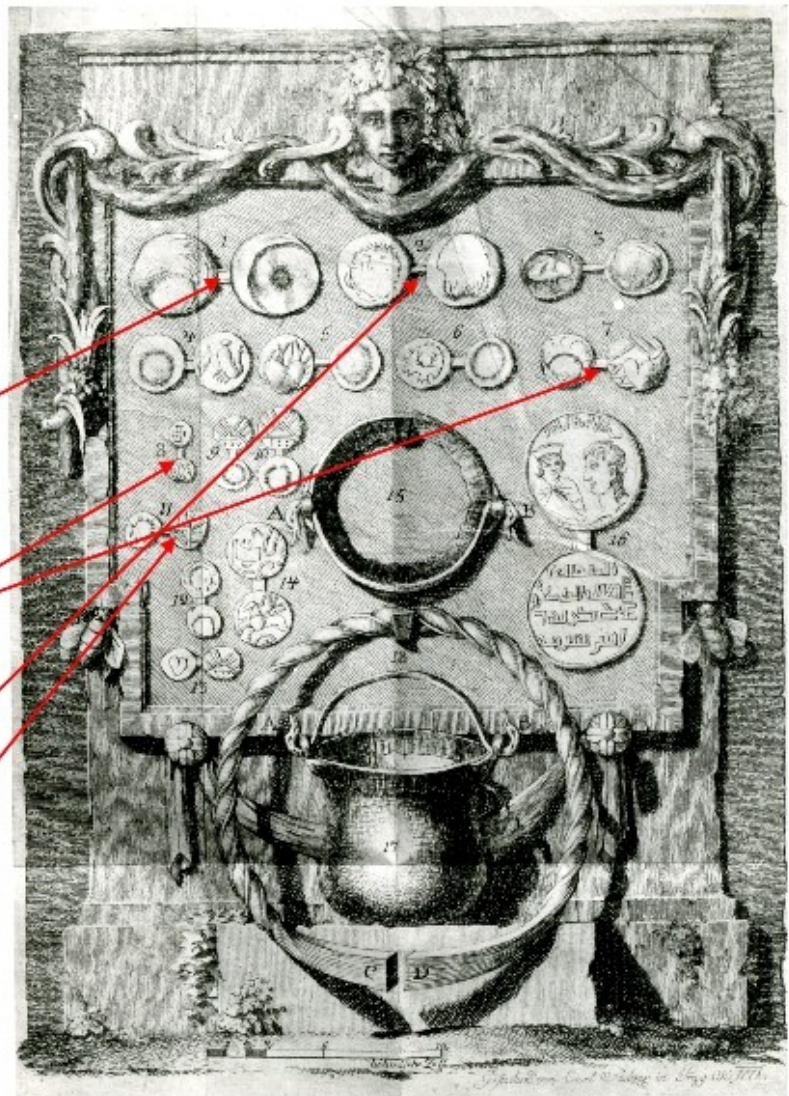


Marcomanus

Quadus



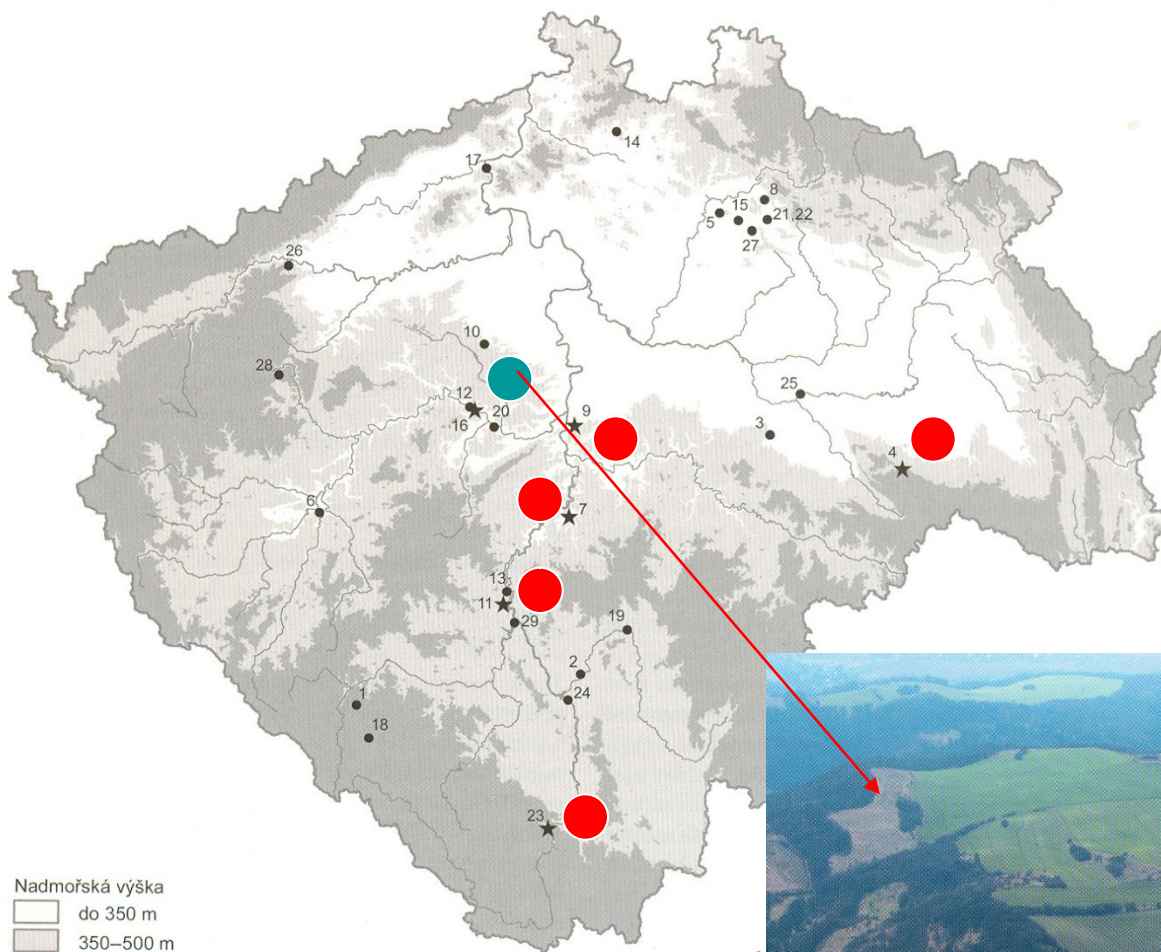
Salvator Frater Salvatoris: Page 2



Keltische Oppidum

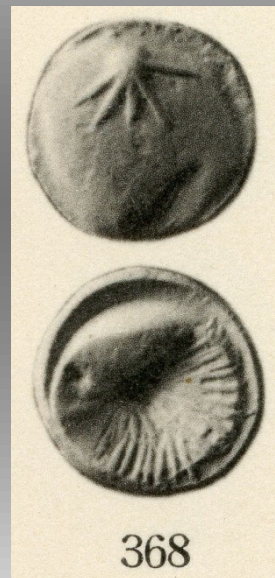
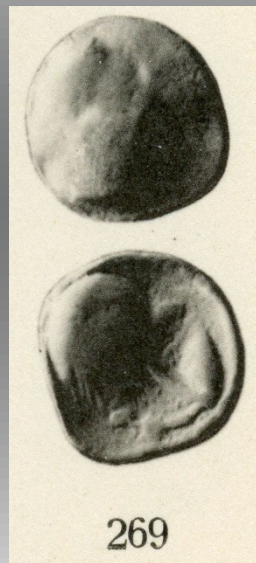
STRADONICE

(LT C2/D1-D1/D2)



STRADONICE

Depot 1877 (um 700 St.)

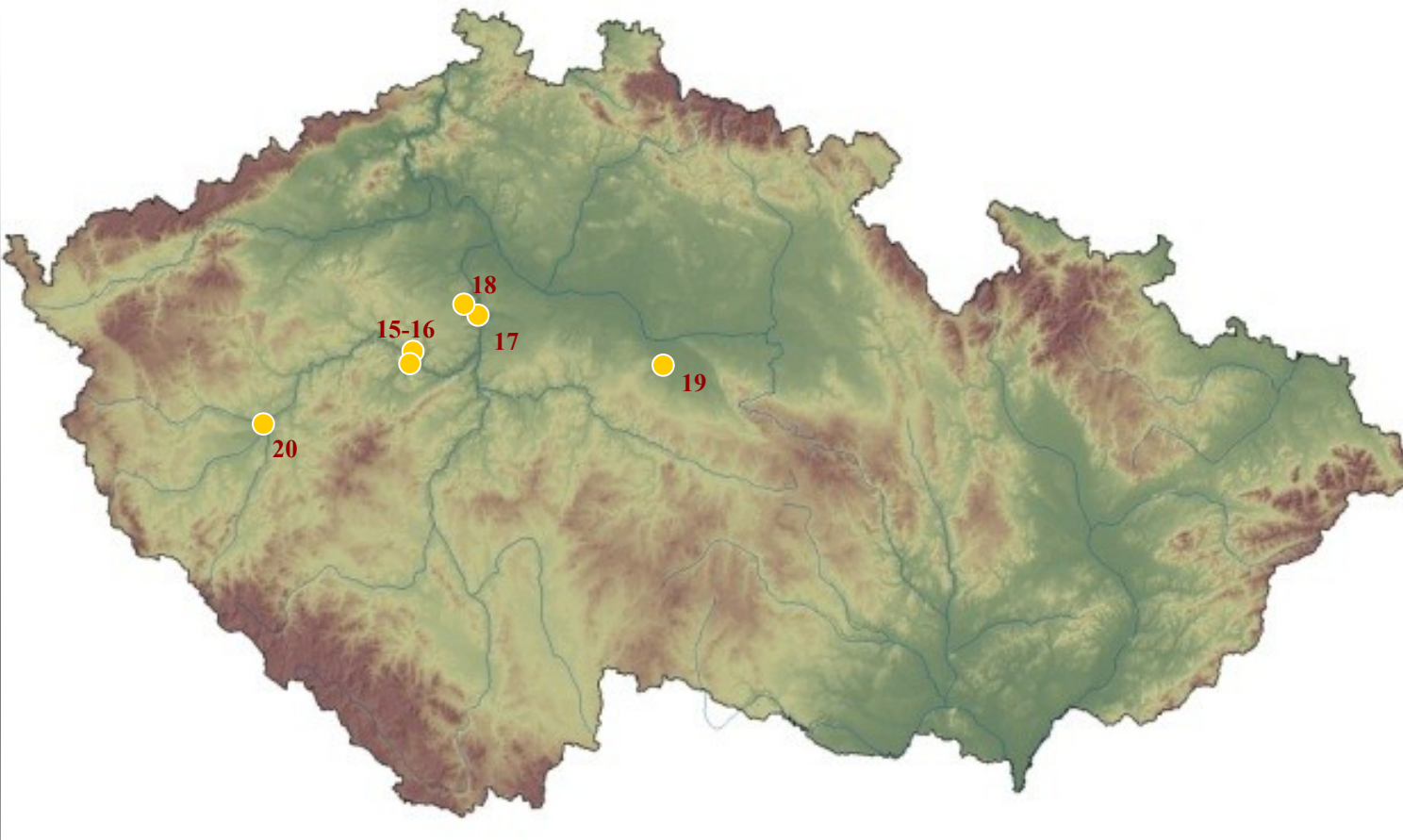


STRADONICE

Depot 1877



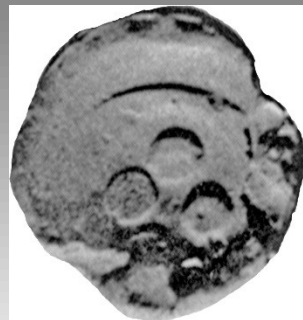




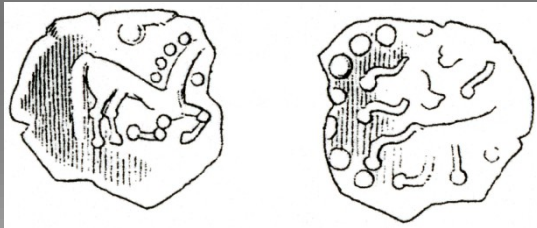
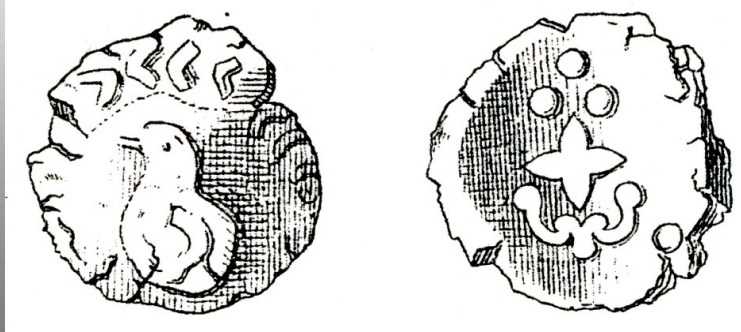
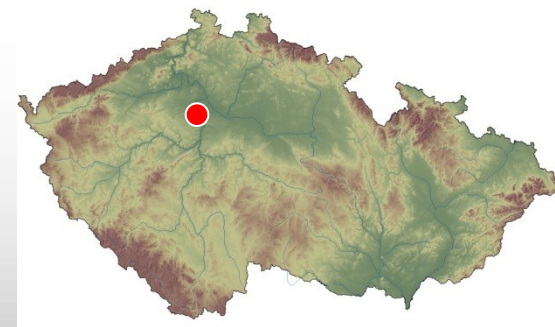
Importierte Hortfunde - LT D1-D2:

● Südbayern und Thüringen (AV+AR): 15.-16. Stradonice; 17. Praha 3-Žižkov; 18. Chýnov;
19. Kutná Hora; 20. Plzeň;

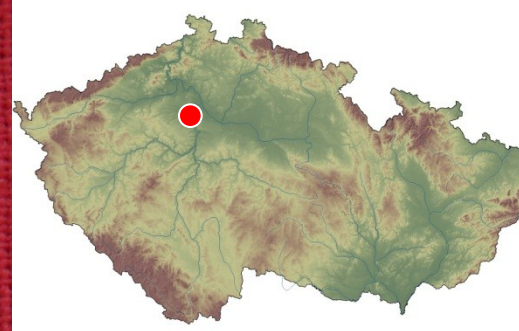
STRADONICE (okr. Beroun)
Depot před 1840 (5 St.)



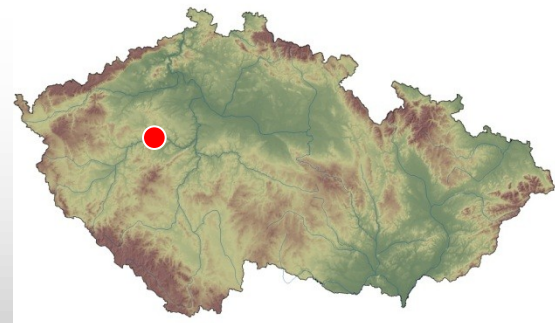
PRAHA 3-ŽIŽKOV 1872 (7 + ? St.)

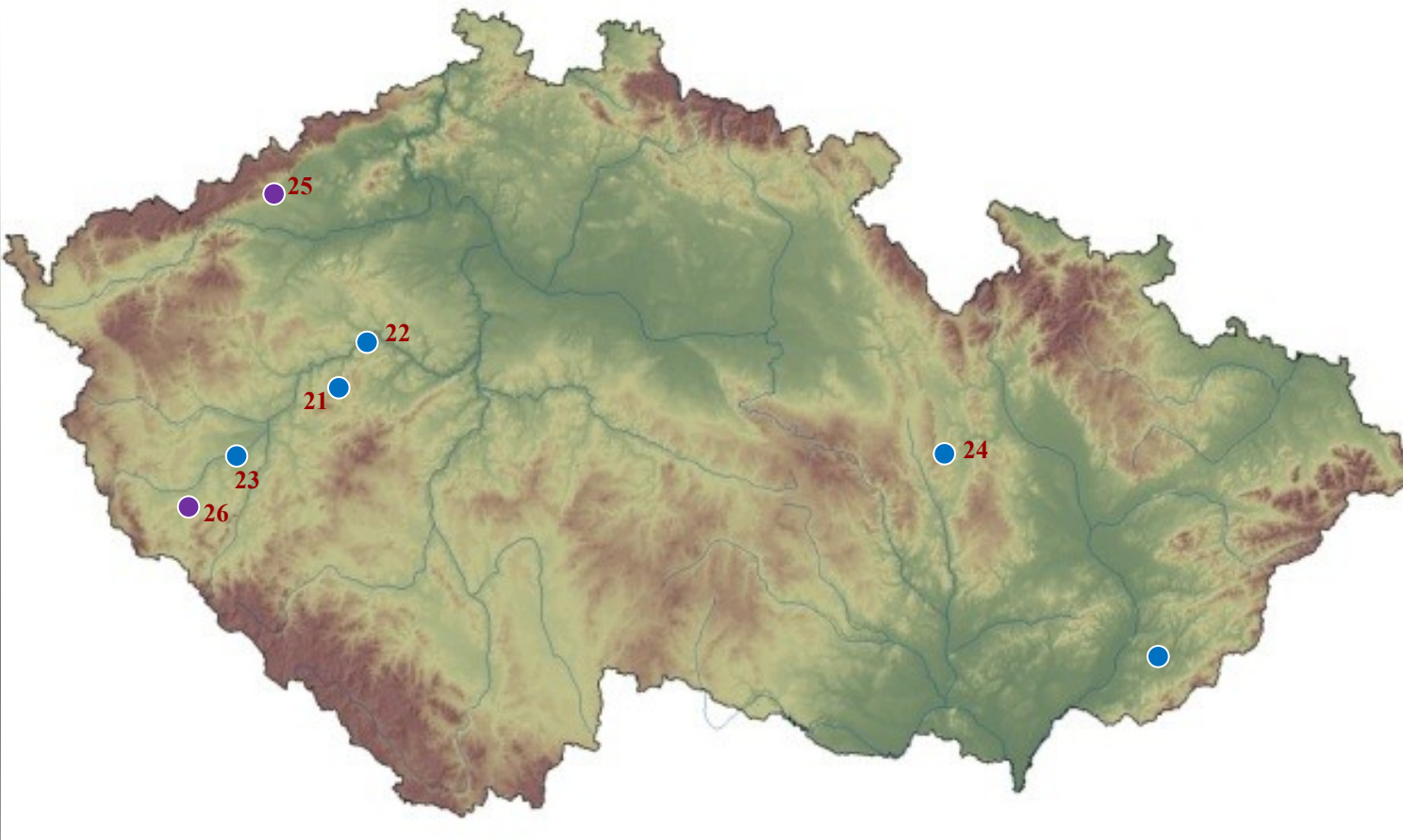


CHÝNOV 2012 (11 St.)



STRADONICE 1862 (1 + XX St.)

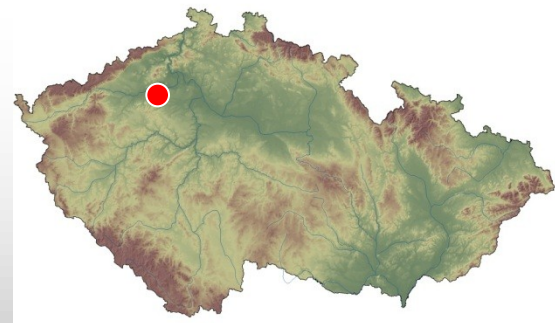




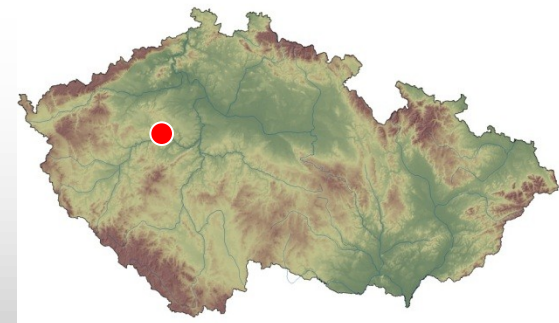
Importierte Hortfunde - LT D1-D2:

- **Noricum und Ostkelten (AR):** 21. Zbiroh; 22. Křivoklát; 23. Holýšov; 24. Jevíčko;
- **Galien (potin):** 25. Chomutov; 26. Domažlice.

CHOMUTOV 1830 (3 + XX/XXX St.)



Křivoklát vor 1915 (1 + XX St.)

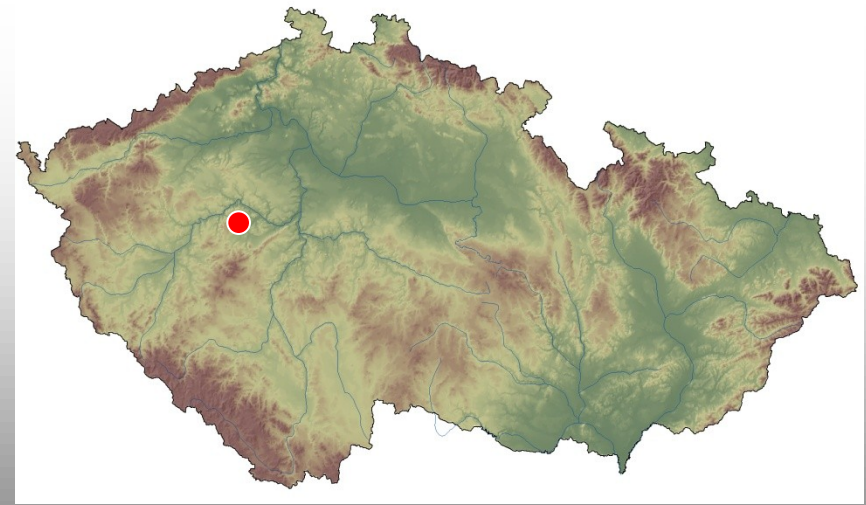


ZBIROH 1856 (2 + XX St.)

WESTNORIKUM

AR Obol

Typ Magdalensberg





Děkuji za Vaší pozornost!