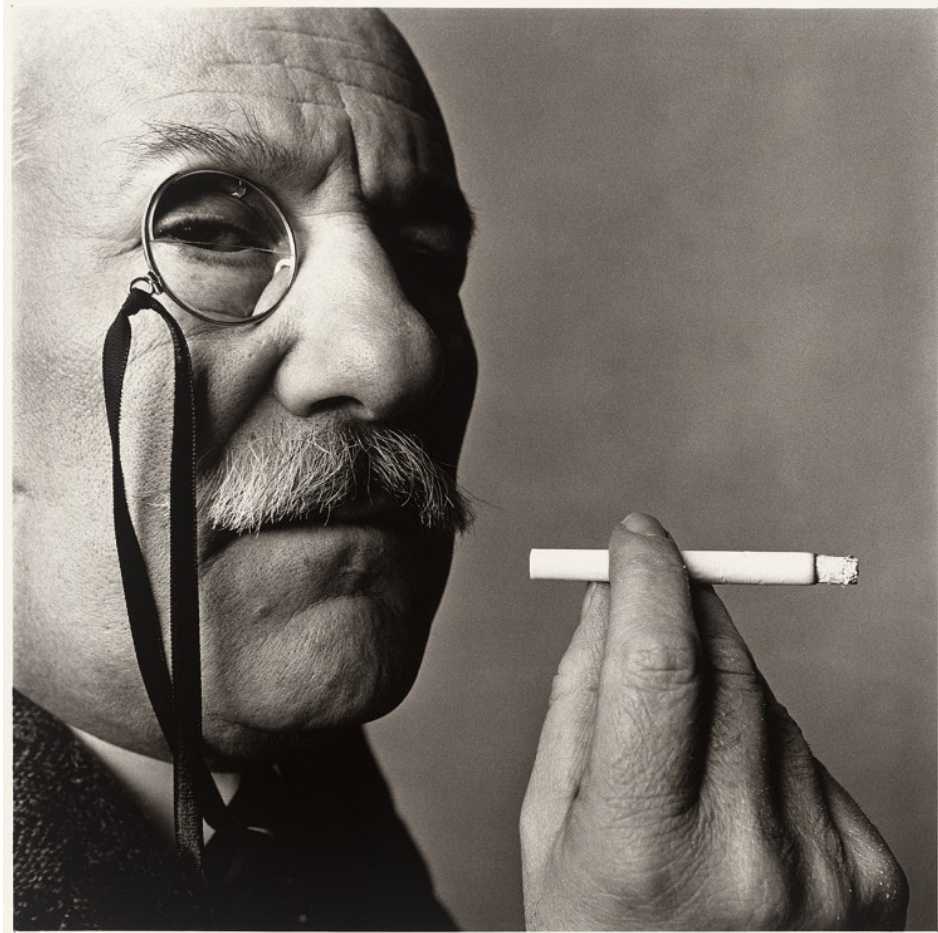


Abstraktní malířství v USA

Color-field painting

Barnett Newman 1905-1970





Command 1946



Genetic moment I 1947

Onement 1, 1948





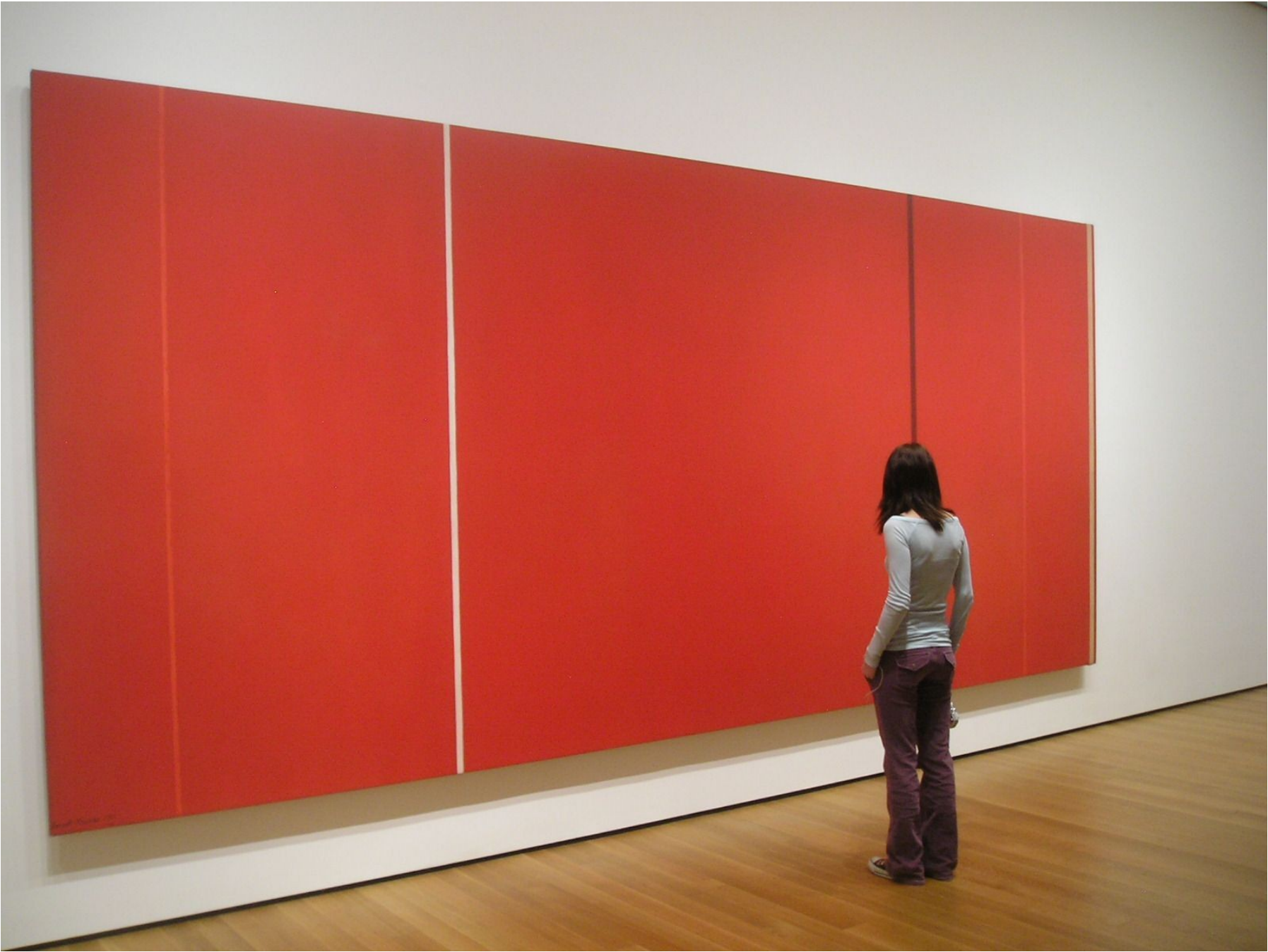
Concord 1949



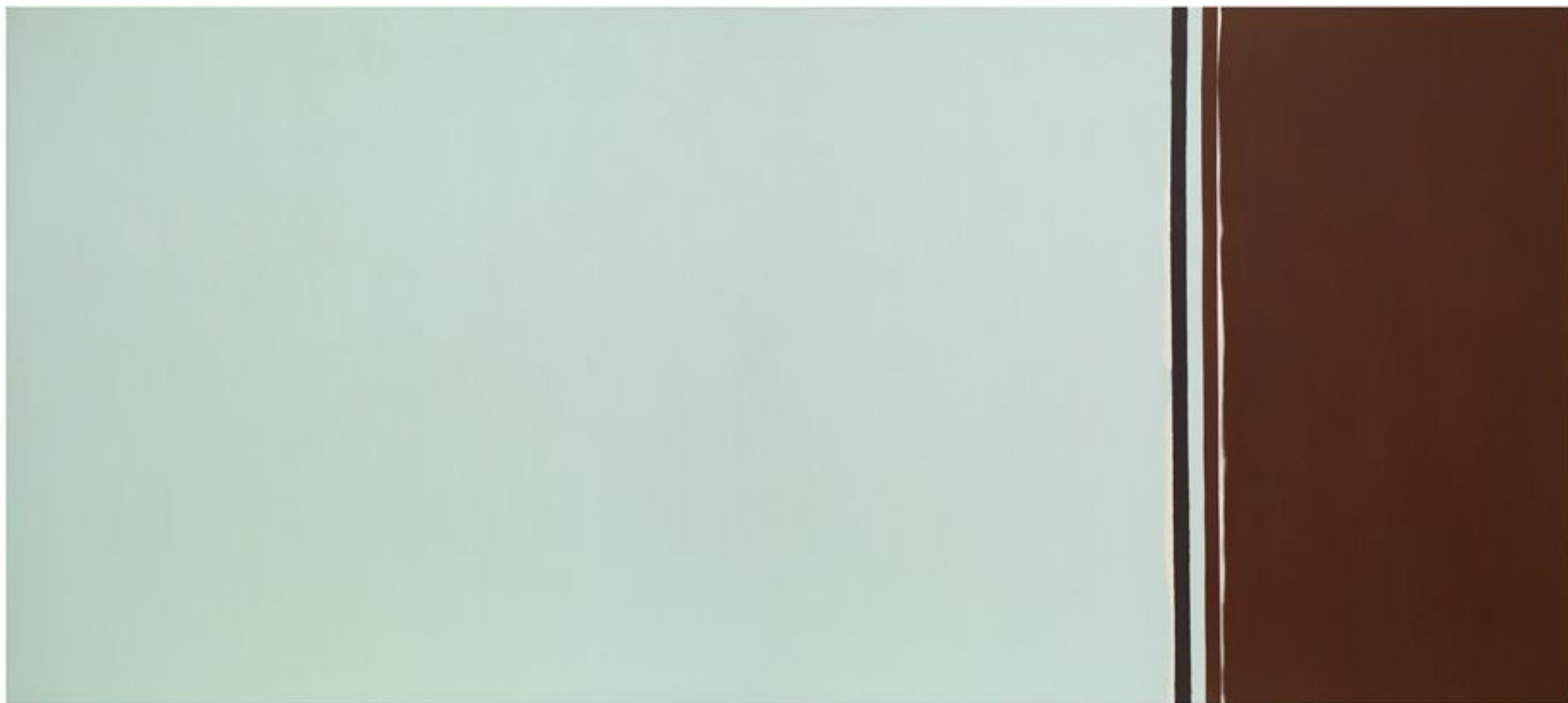
Tundra 1950



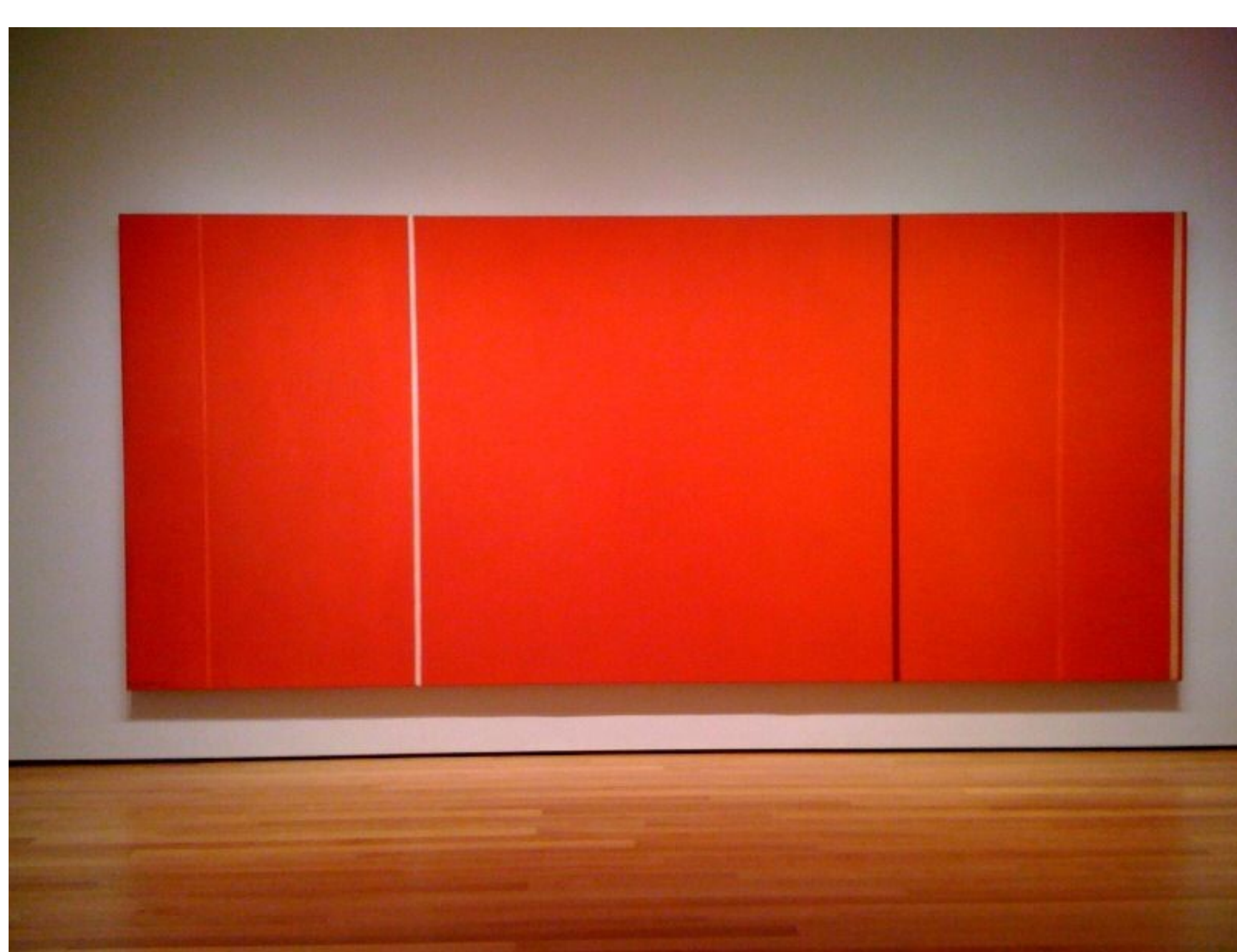
Adam 1952



Vir Heroicus Sublimis
1950-51



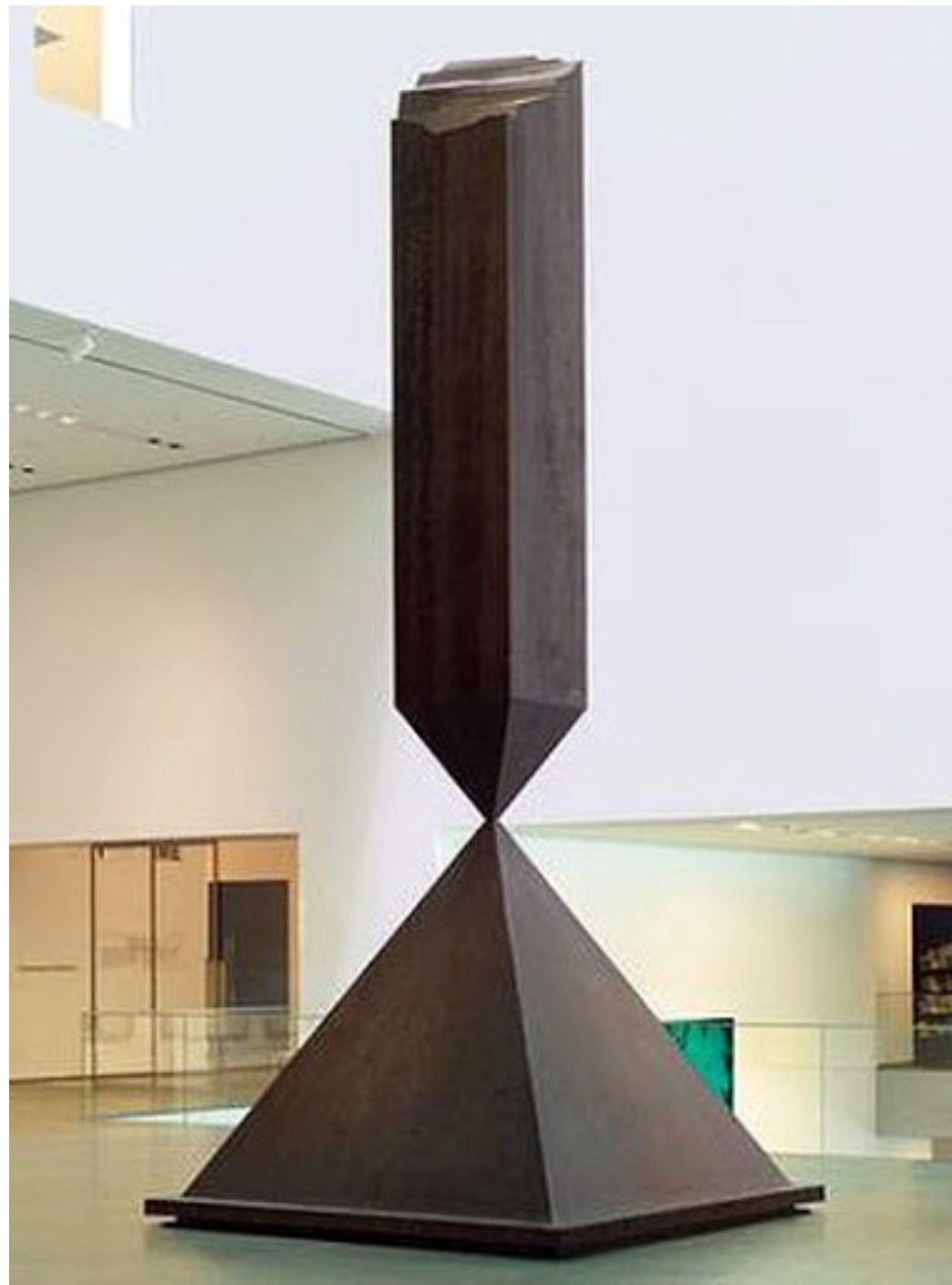
Uriel 1955



Anna's Light 1968

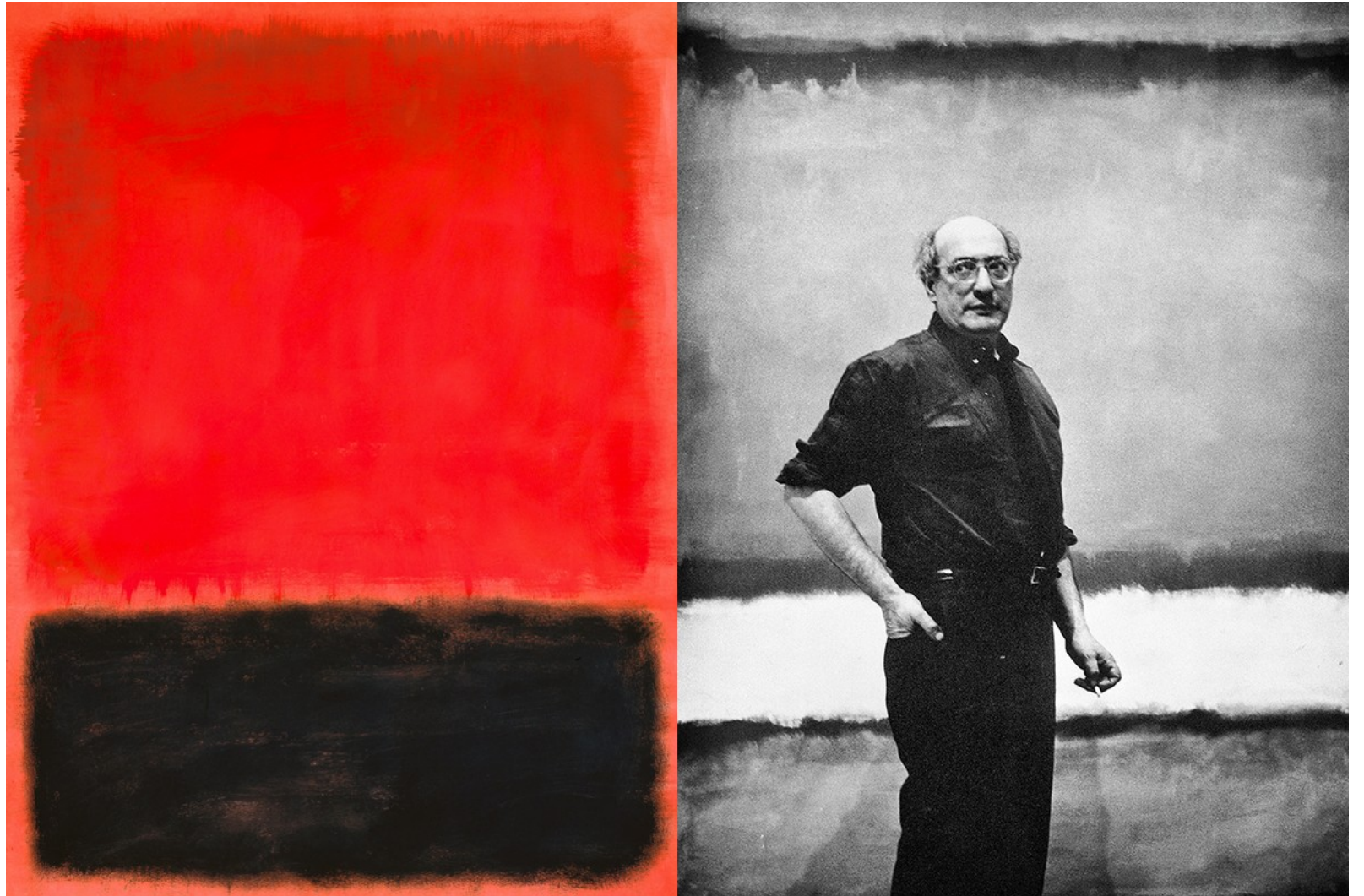


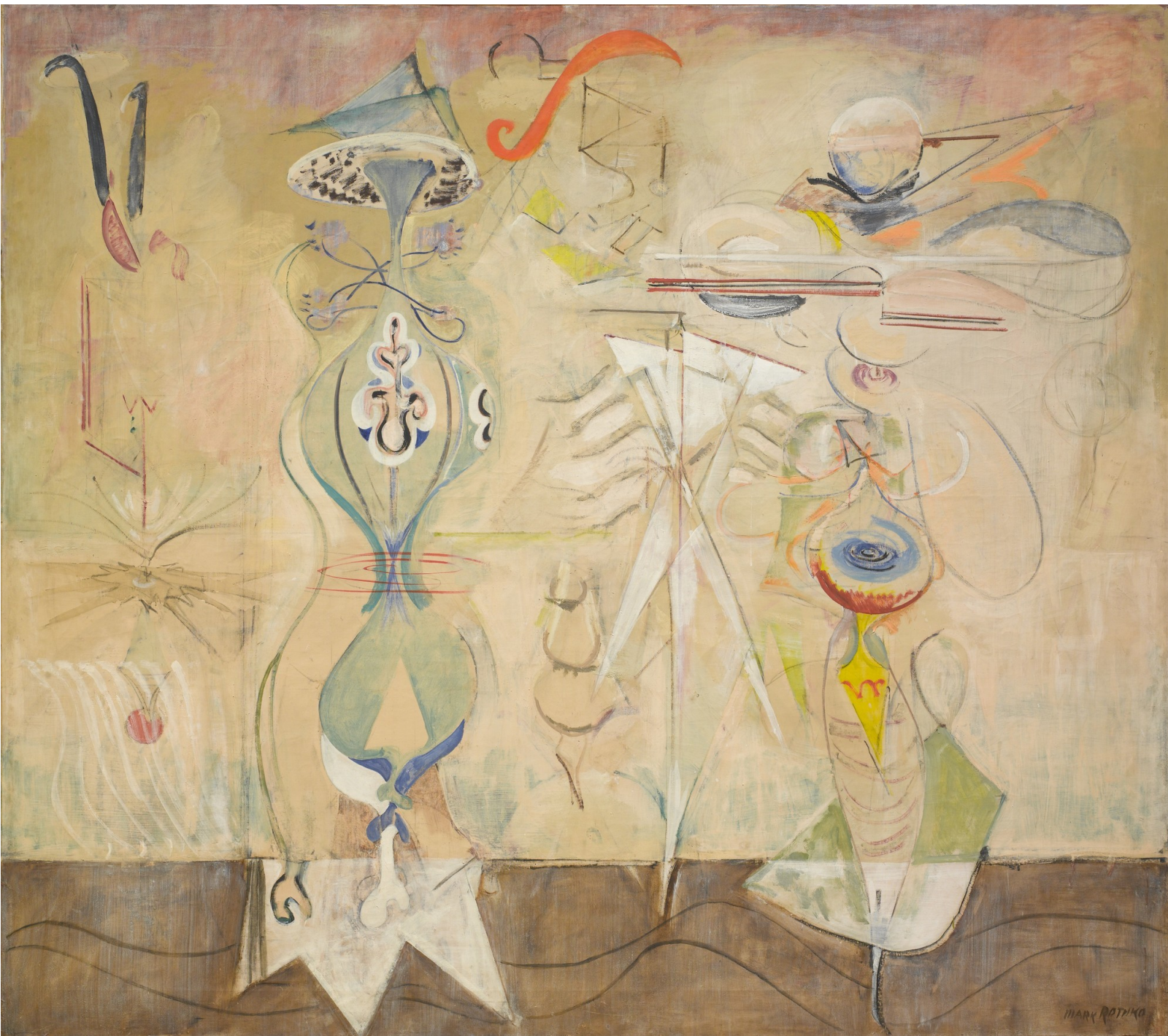
Stations of the Cross 1965-70



Broken obelisk 1963-67

Mark Rothko 1903-1970

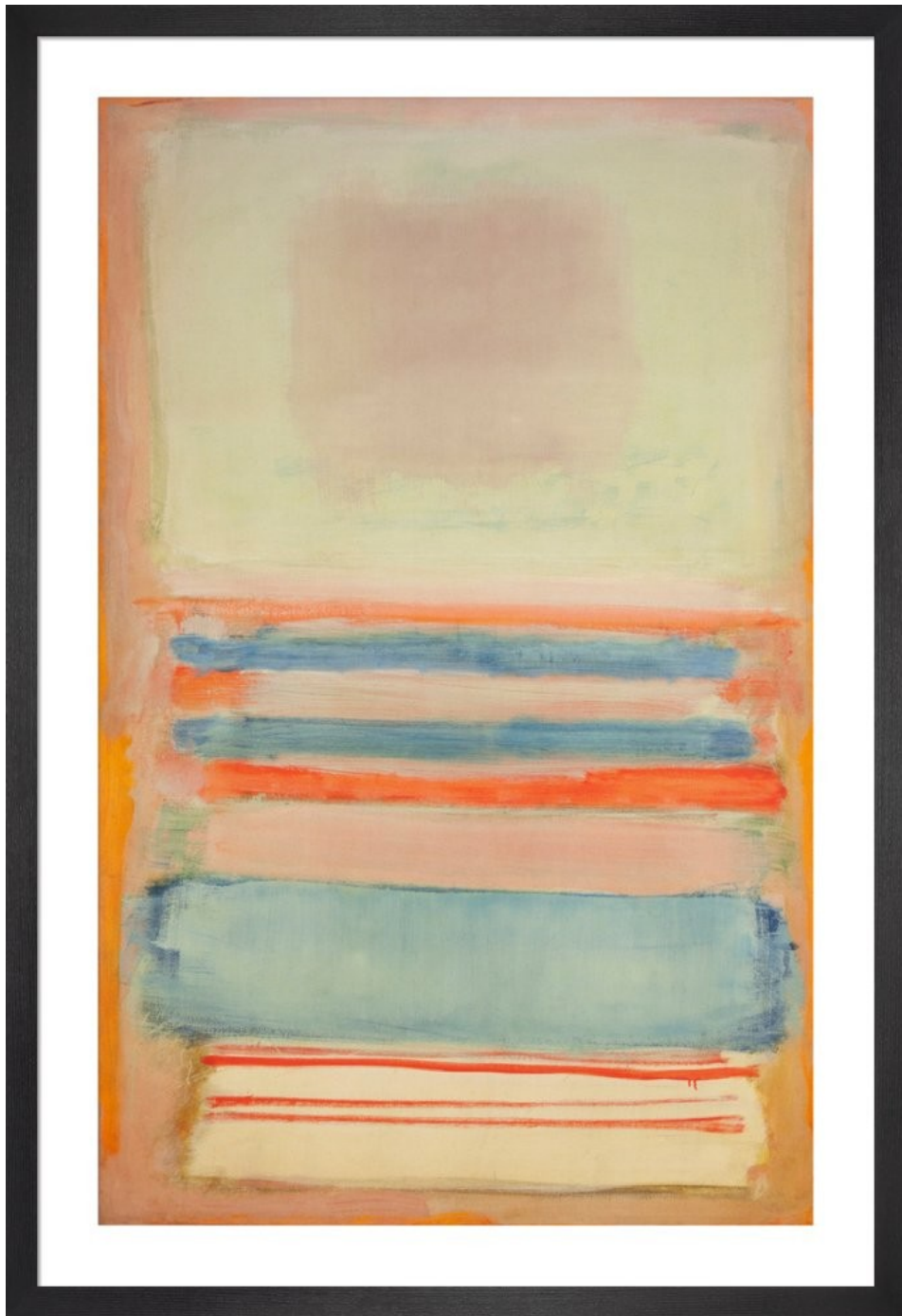




Slow Swirl at the Edge of the Sea 1944



Multiform 1947



No 11, 1949



No 16, 1949



Untitled 1949



No. 24, 1949



No. 6 (Yellow, White, Blue Over
Yellow on Gray) 1954

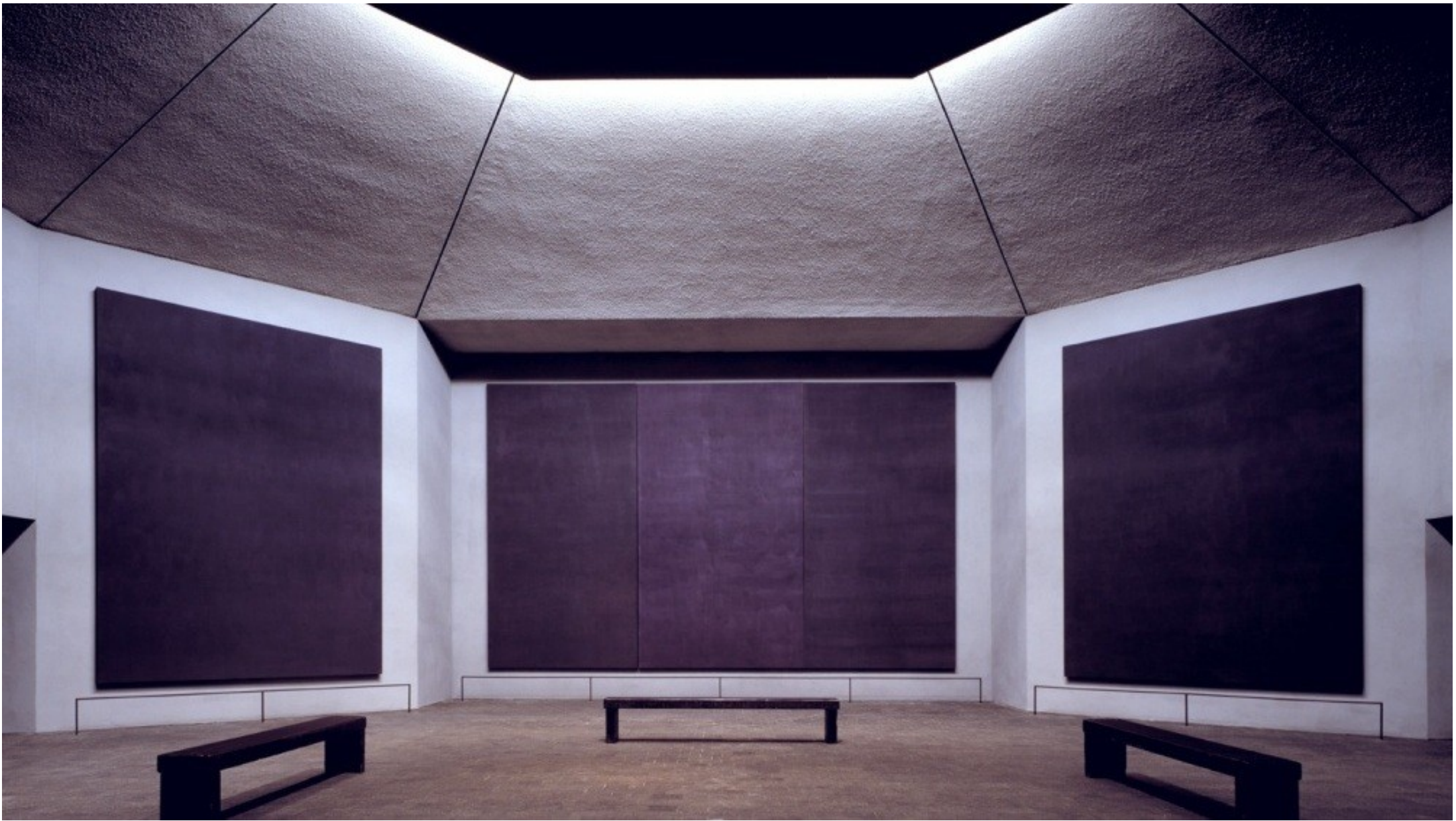




Black blue painting 1968



Black on grey 1970





Rothko's Chapel, Houston 1971

Clyfford Still 1904-80



PH 143





1936-37 no. 2 1937



1943-J, 1943



PH-233 (Self portrait), 1946



Ph 950, 1950

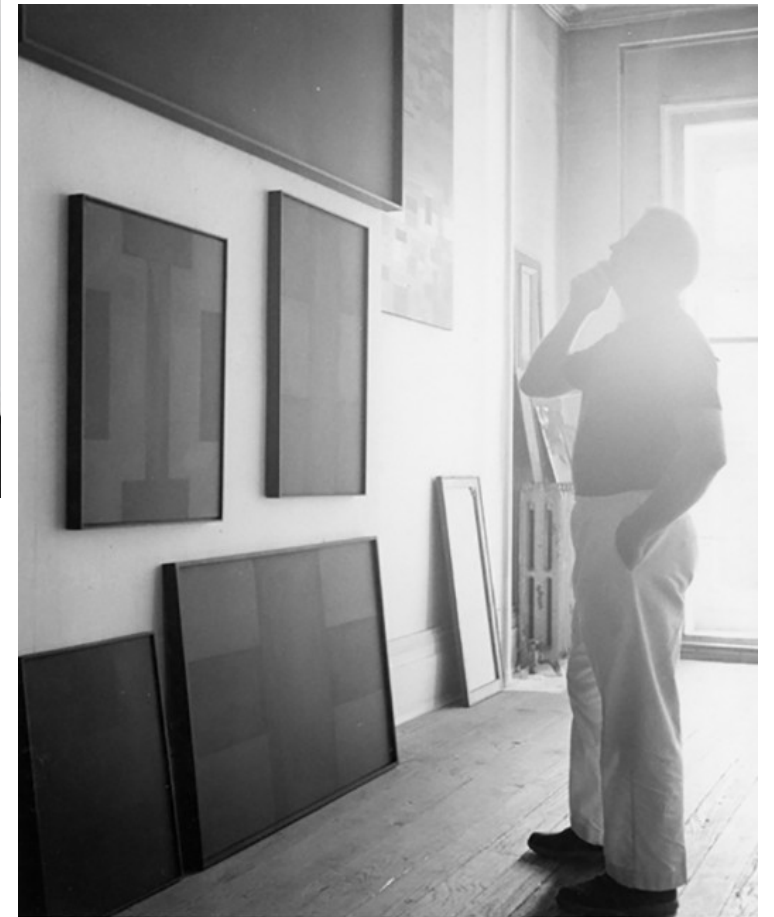


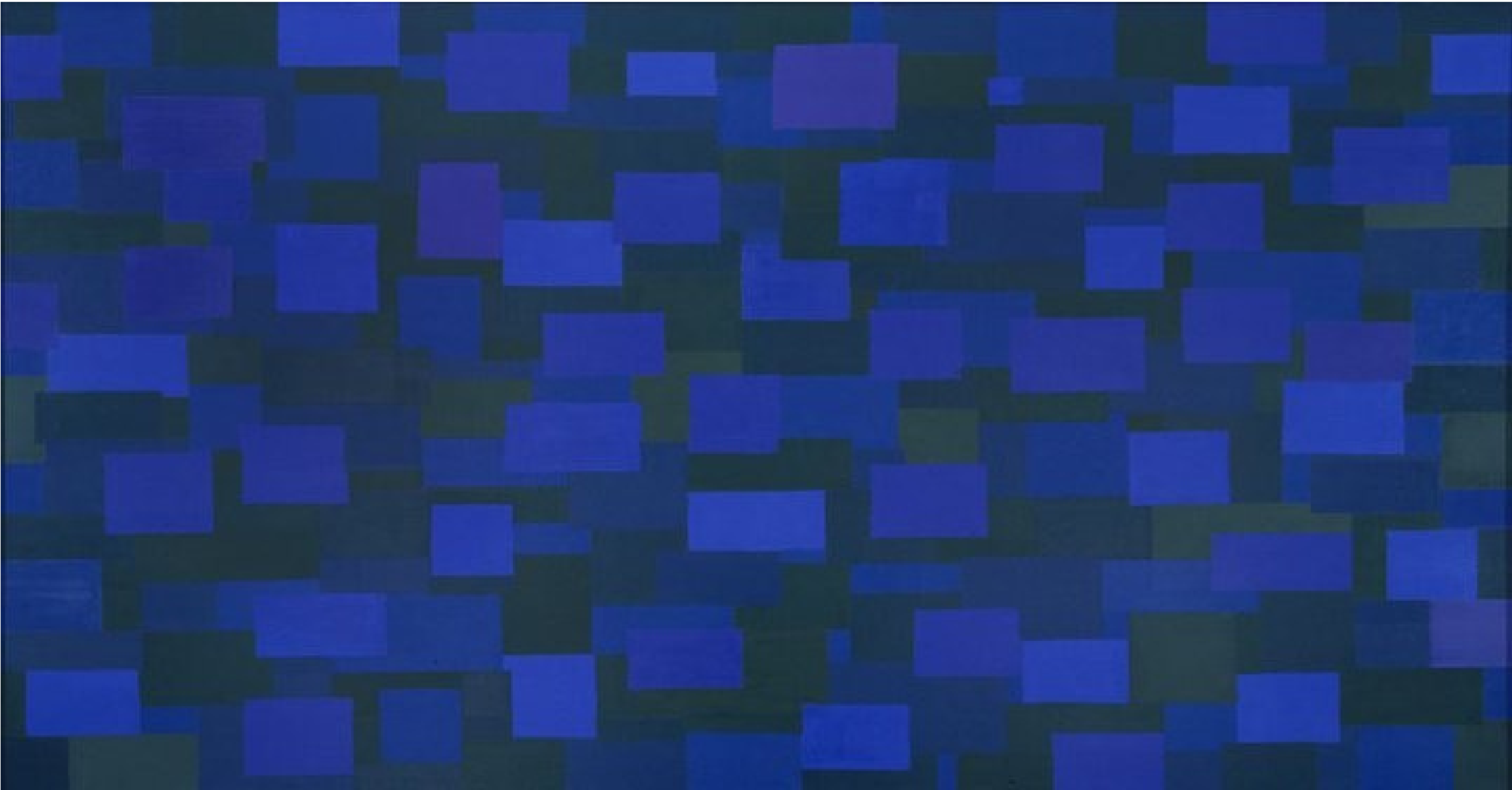
Ph 252, 1955



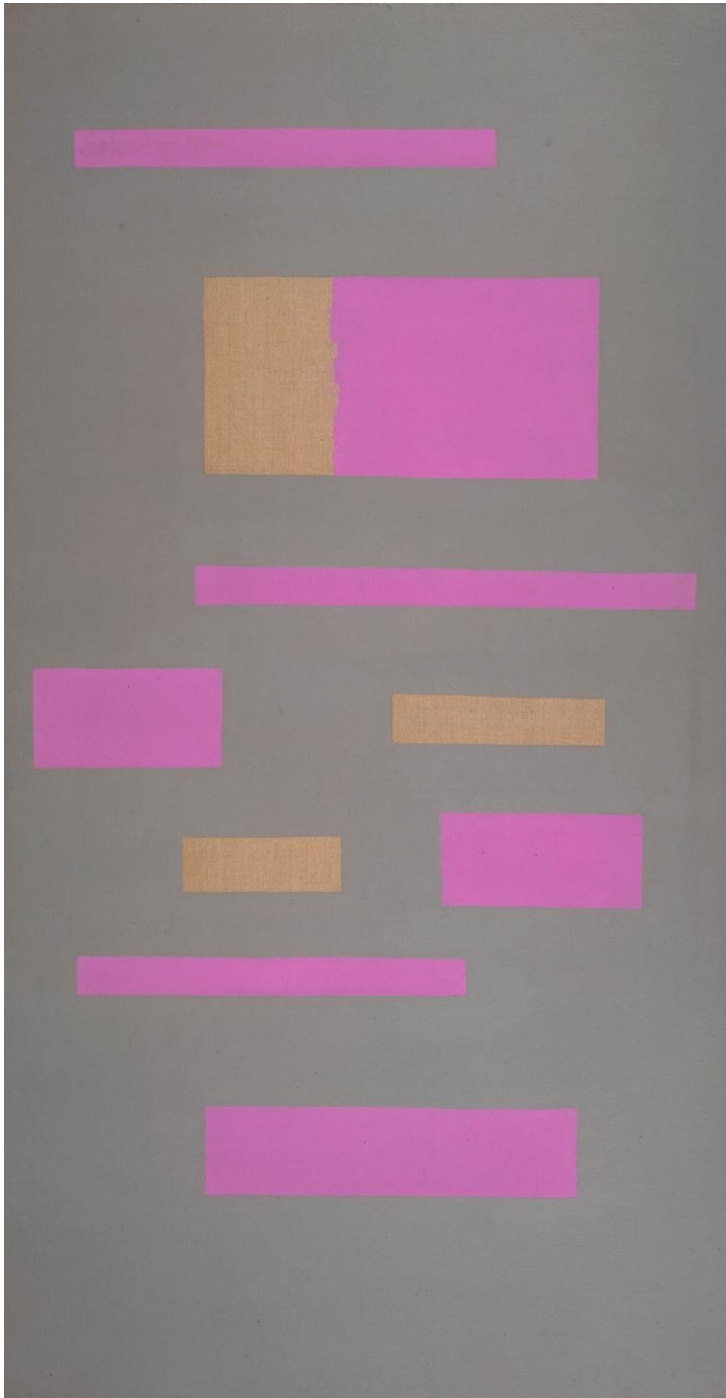
Ph 401, 1957

Ad Reinhardt 1913 - 1967

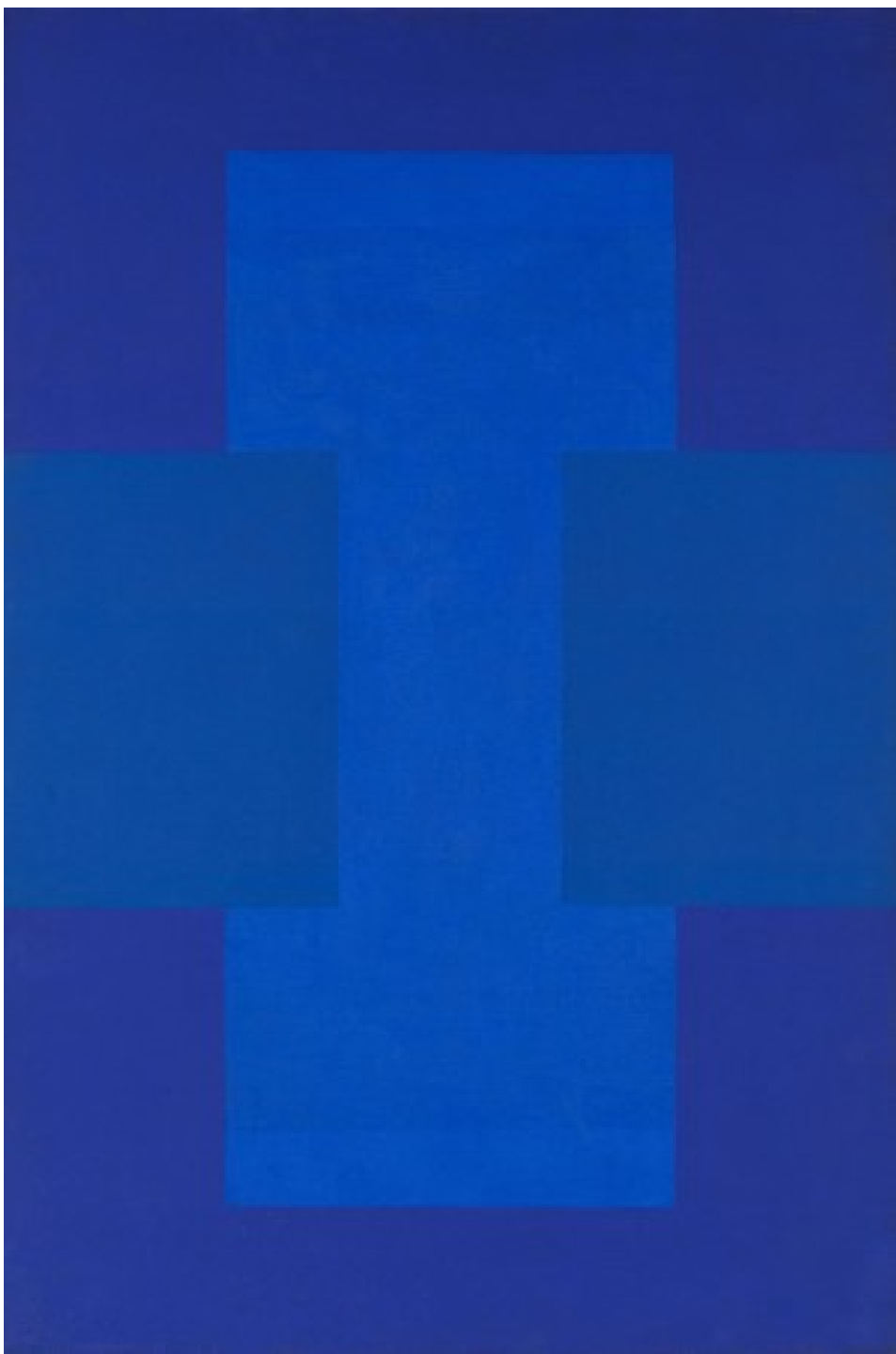




Number 88 (Blue), 1950



Abstract painting 1952



Blue-purple painting 1952



No. 17, 1953



Painting 1959



Abstract painting no. 4, 1961



Abstract painting no. 5, 1962

Cross-sections, visible illumination, 280x printed magnification (images overexposed to reveal black layers)

