

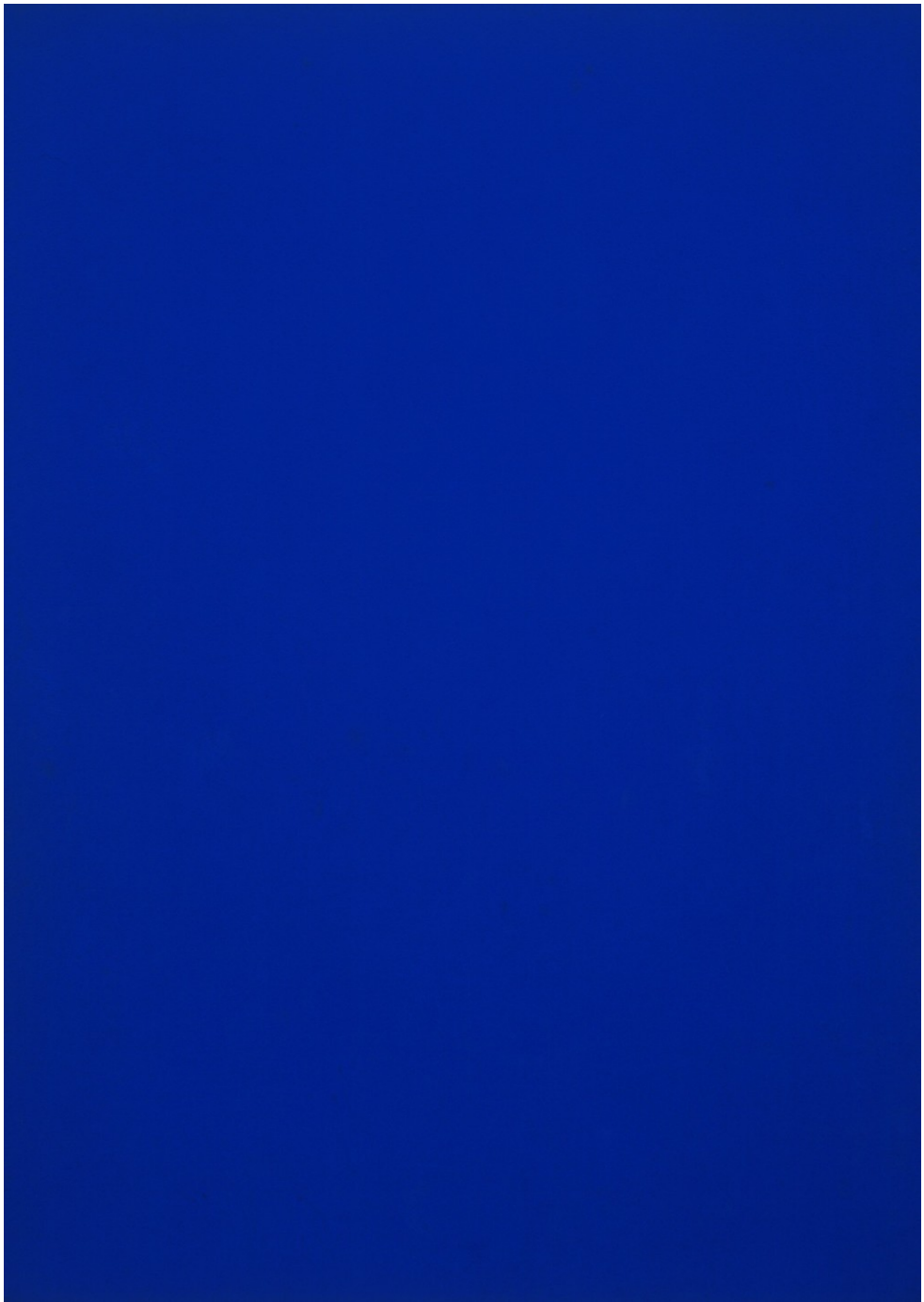
# Yves Klein 1928-1962



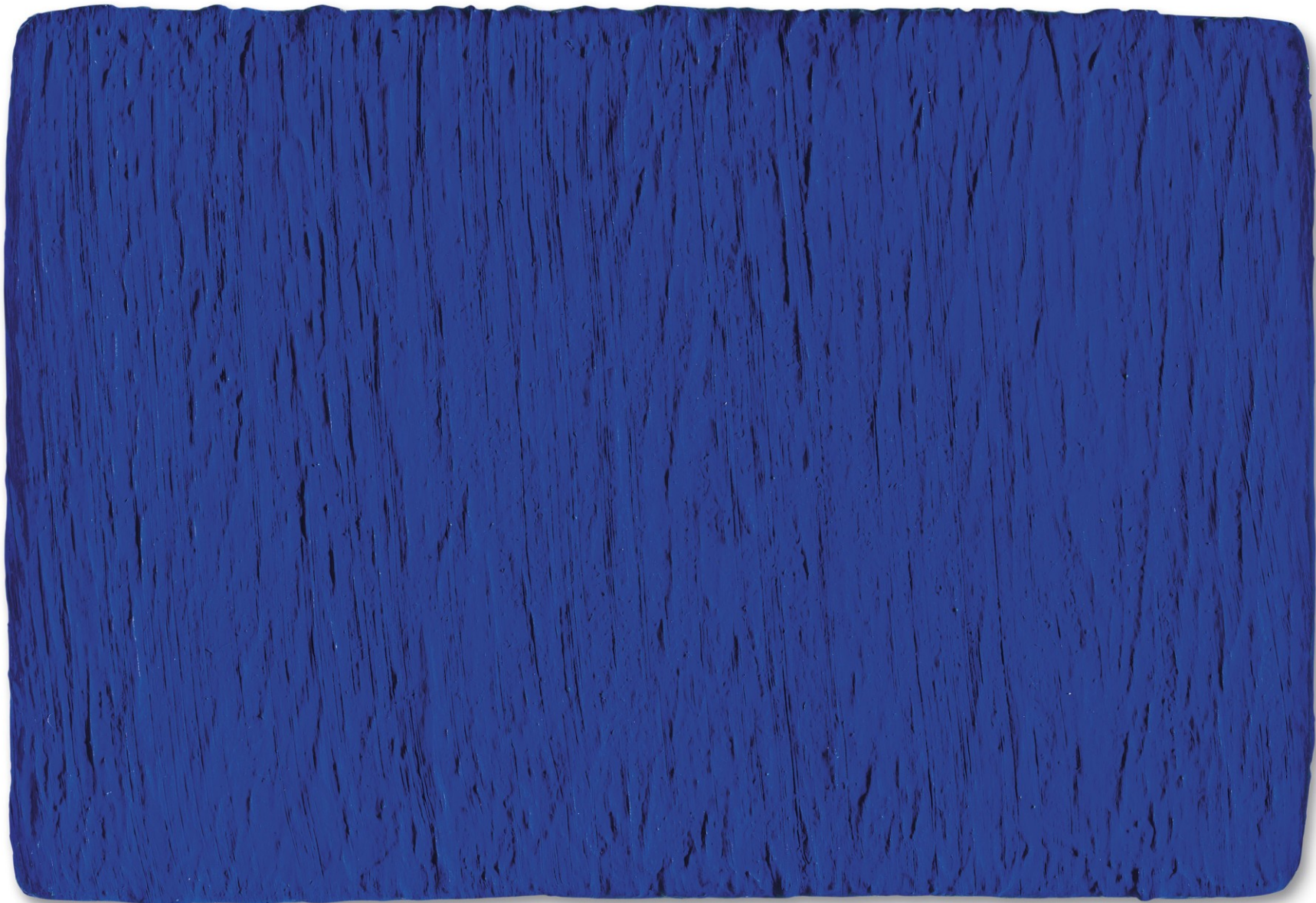


Vítězství Samothrace 1962





Blue monochrome 1961



Untitled, Blue monochrome 62

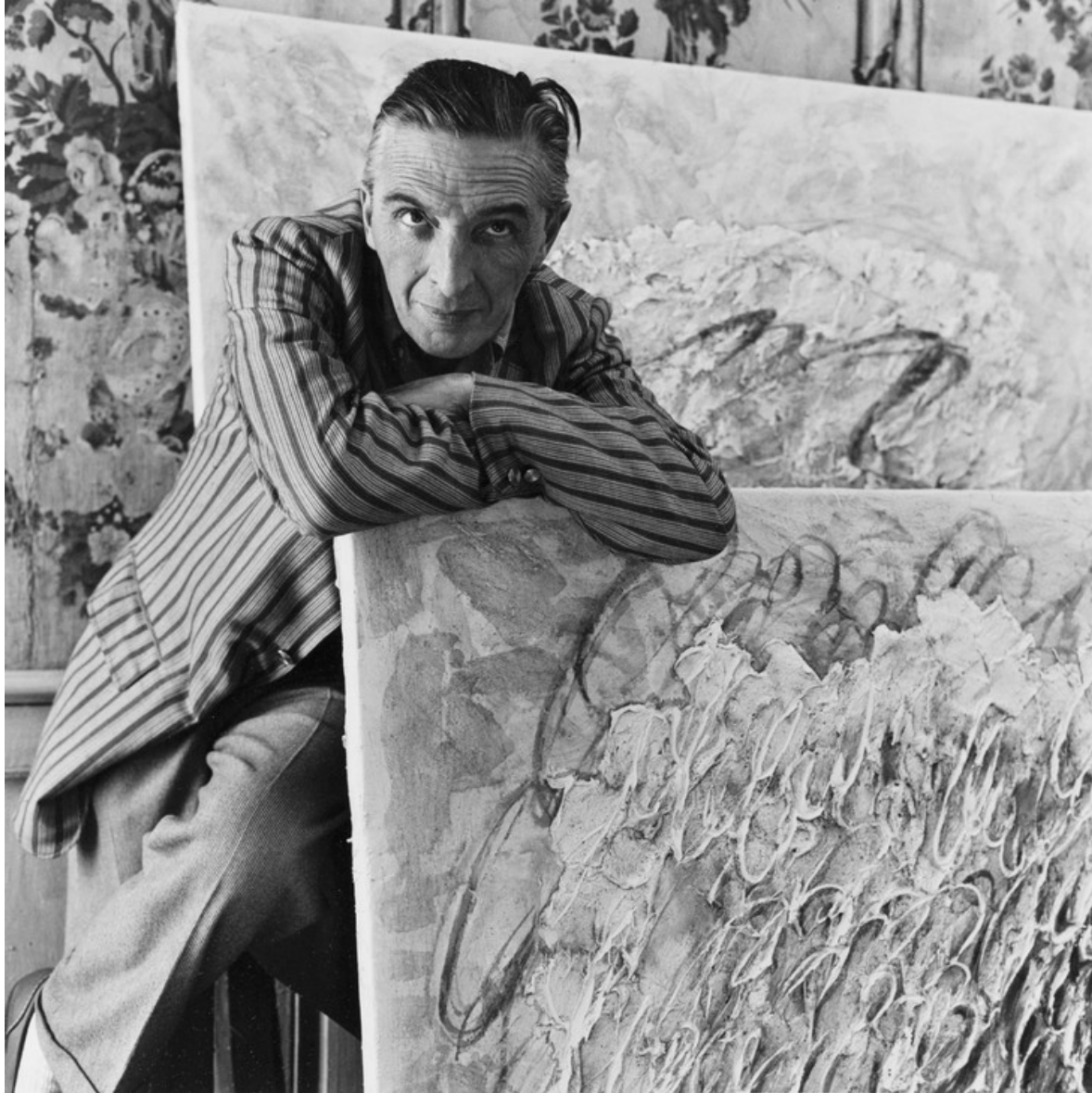


# Art informel Tašismus Lyrická abstrakce

Michel Tapié *Un art autre* 1952



# Jean Fautrier 1898-1964





Les 1928





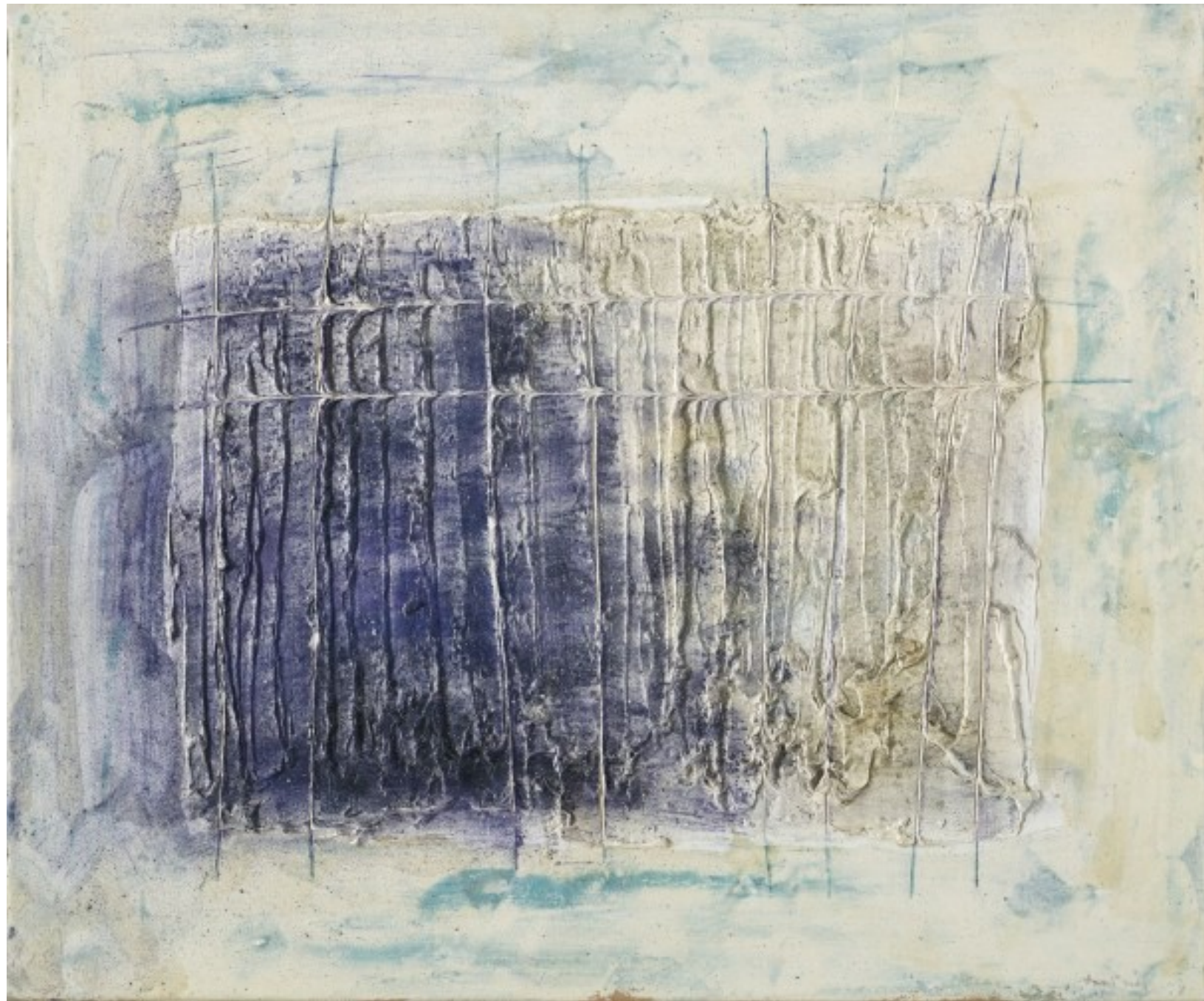
Les 1943



Holý 1945



Zelené stromy 1958



Pravouhlá konstrukce 1958

# Wols (Alfred Otto Wolfgang Schulze) 1913-1951





Bez názvu 1946-47



Manhattan 1948-49

# Henri Michaux 1899-1984







Bez názvu 1961

# Serge Poliakoff 1900- 1969



Composition grise et rouge 1964



Abstraktní kompozice tate 1954



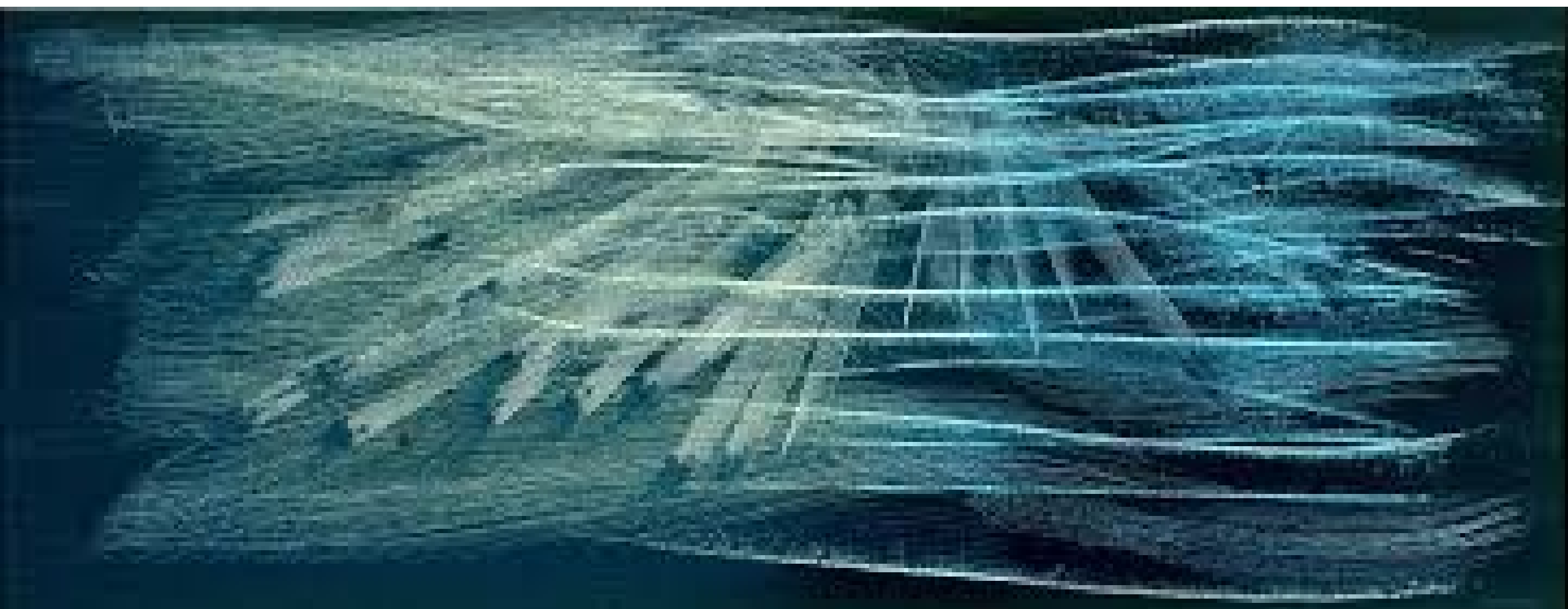
Abstraktní kompozice 1959

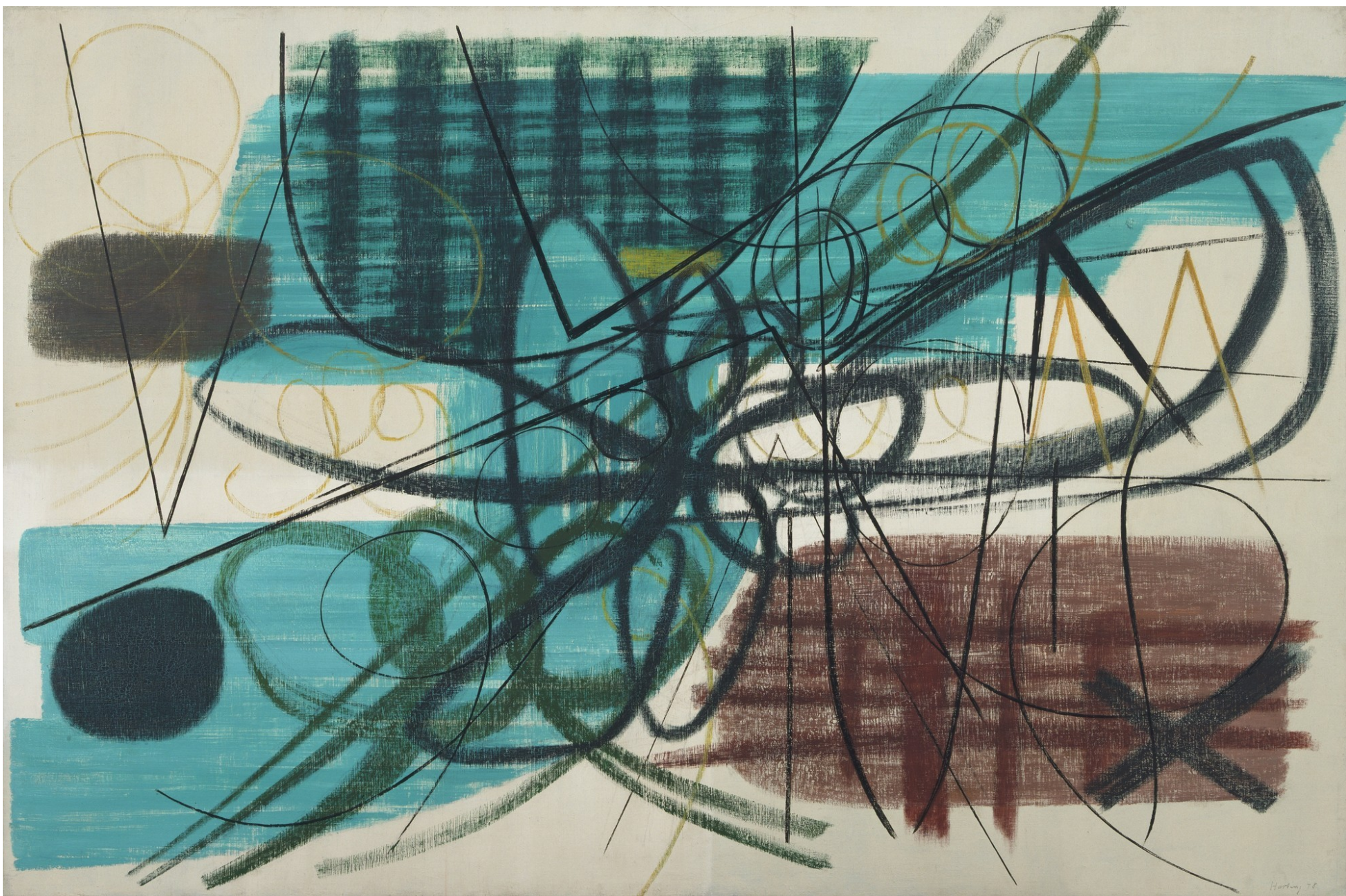
# Hans Hartung 1904-1989





[T1963-R6', Hans Hartung, 1963 | Tate](#)





Obraz 1948





# Jean Bazaine 1904- 2001

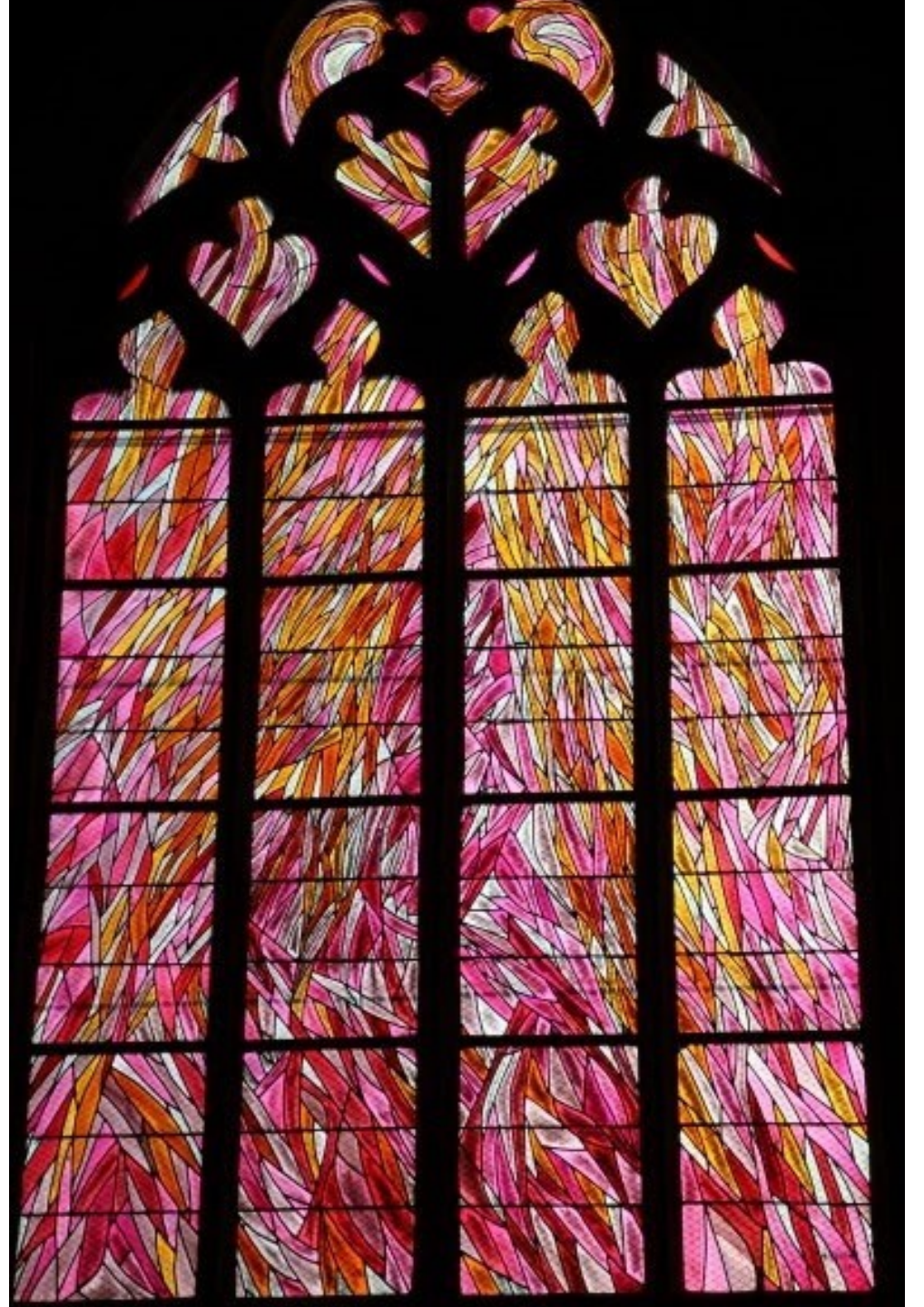




Strom a nebe 1950



Stromy a planiny 1947



Jean-Paul Riopelle 1923-  
2002



Bez názvu 1948



Karneval 1953



Bez názvu 1957



# Alfred Manessier 1911-1993



Offrande du soir or Litanies, 1960



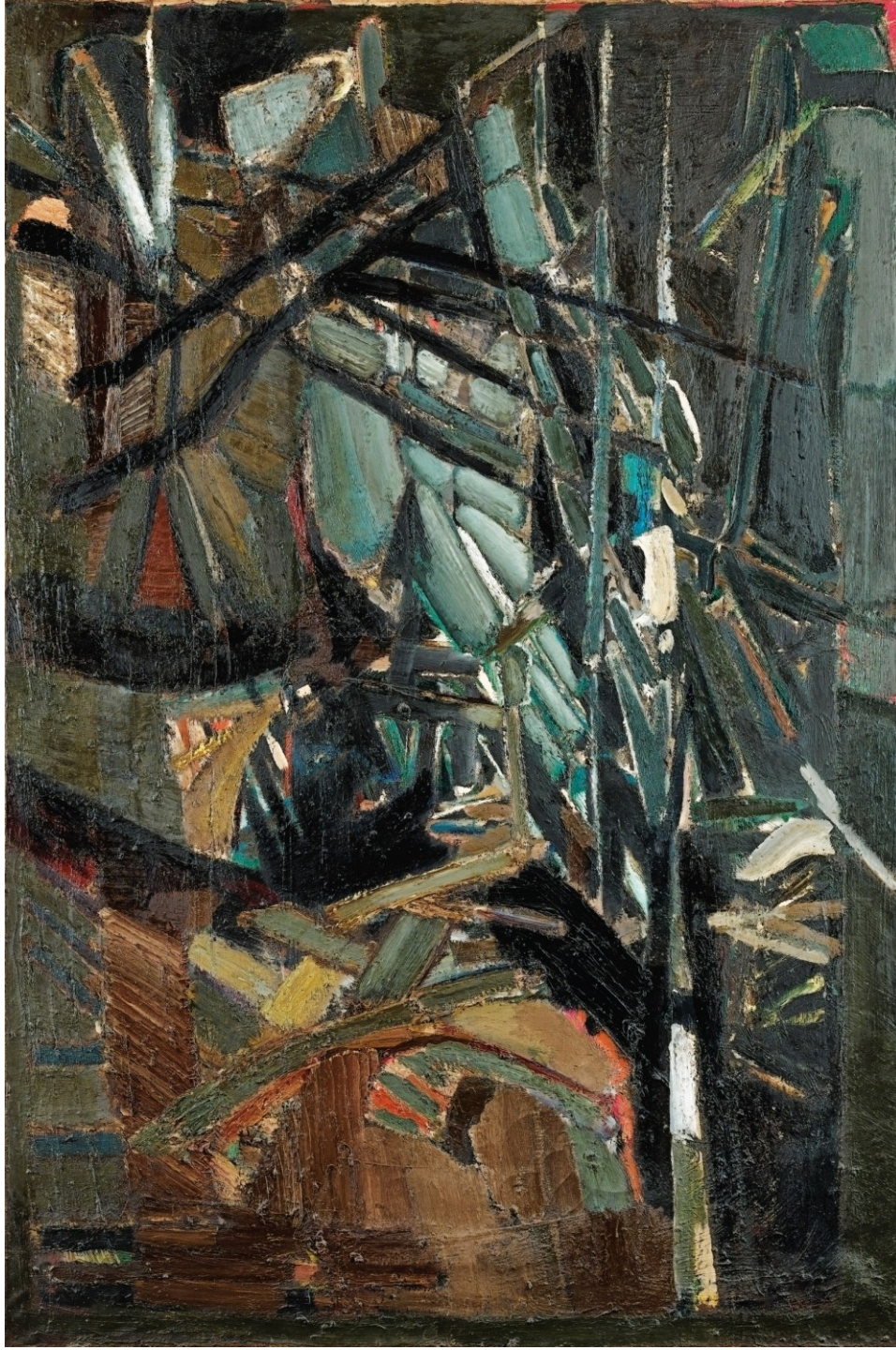
Trnová koruna 1954



Míza 1963

# Nicolas de Staël 1914-1955

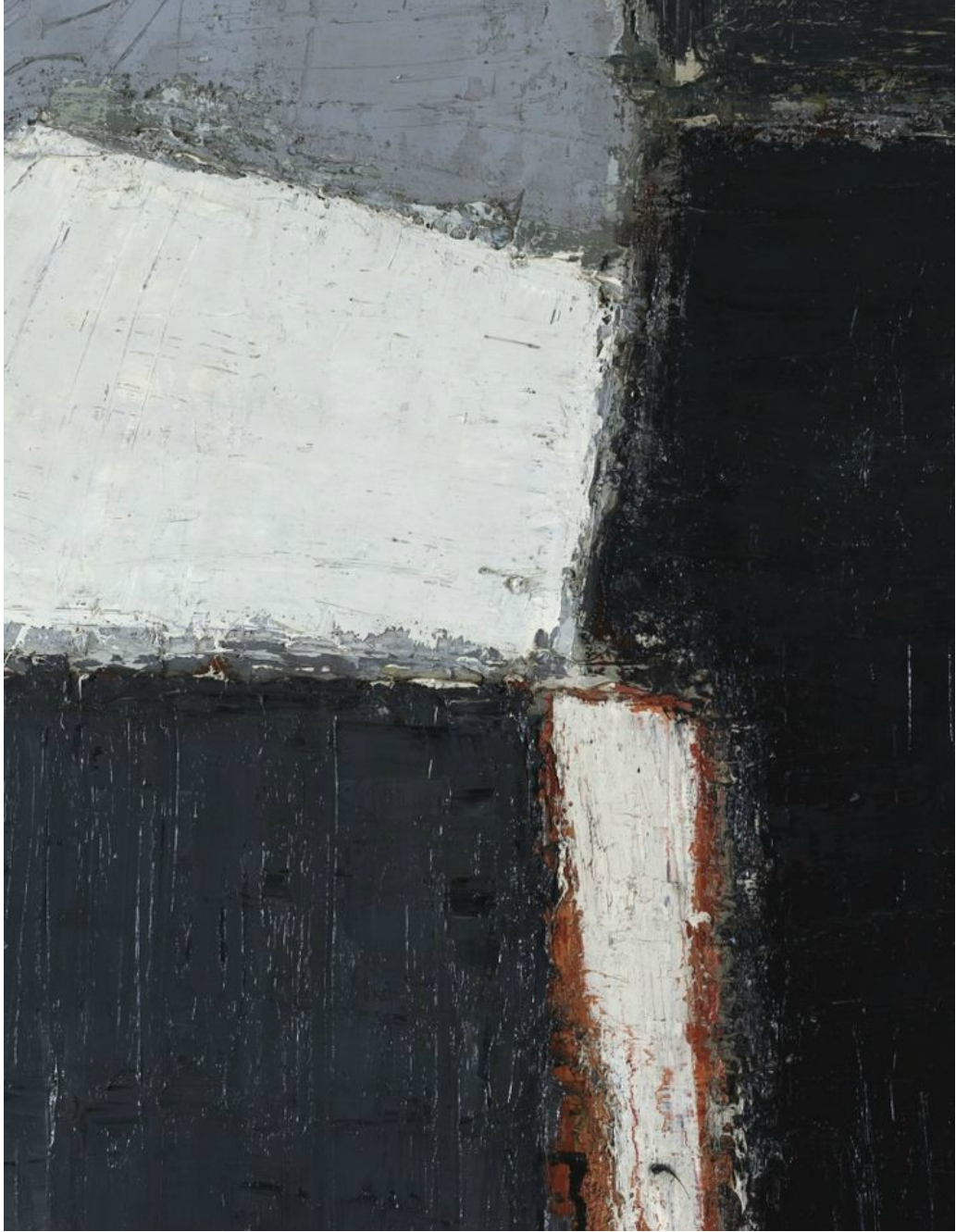




Abstraktní kompozice 1947



Kompozice 1950





Vilerville 1952





Střechy 1952



Středomořská krajina 1953



Lahve 1952



Antibes 1954



Agrigento 1954



Fotbalisté 1952

# Zao wou-ki 1921-2013





Juin-Octobre 1985

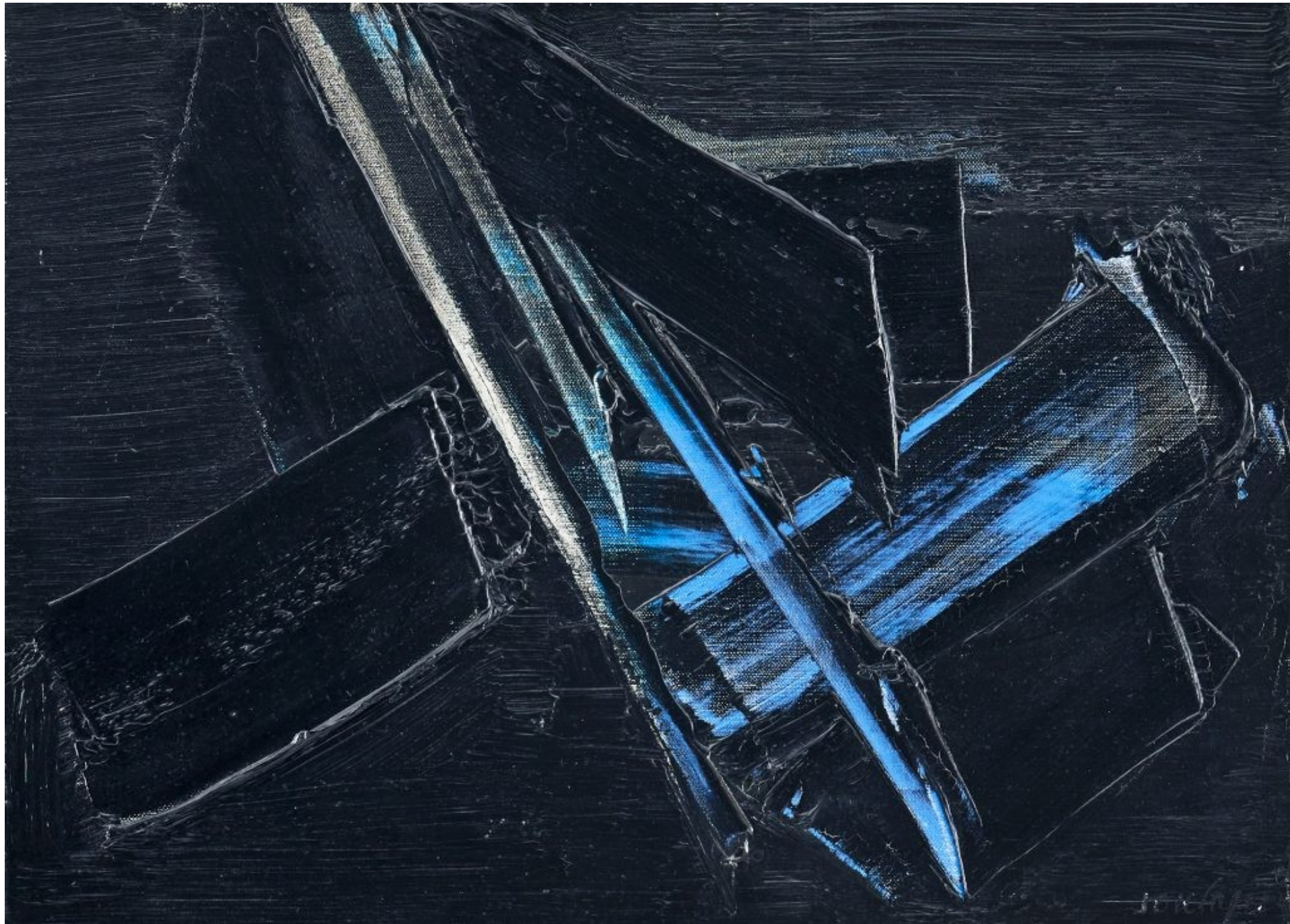


- In 3.12.67 we see the influence of Chinese ink painters and the typical Chinese split composition representing the sky and the earth, but we also see the painterly qualities of a Jackson Pollock or Franz Kline. Wou-Ki never titled his works as he felt this would influence the viewer with pre-conceptions, so whether this is a study of mist, wind, or the elemental properties of the earth, the matter and voids of the universe, it is up to the viewer to decide, but we do see a fusion of Chinese and Western art and a boldness of application and colour.



# Pierre Soulages 1919-





Peinture 33x46cm, 1959



Peinture 200x162cm, 1960

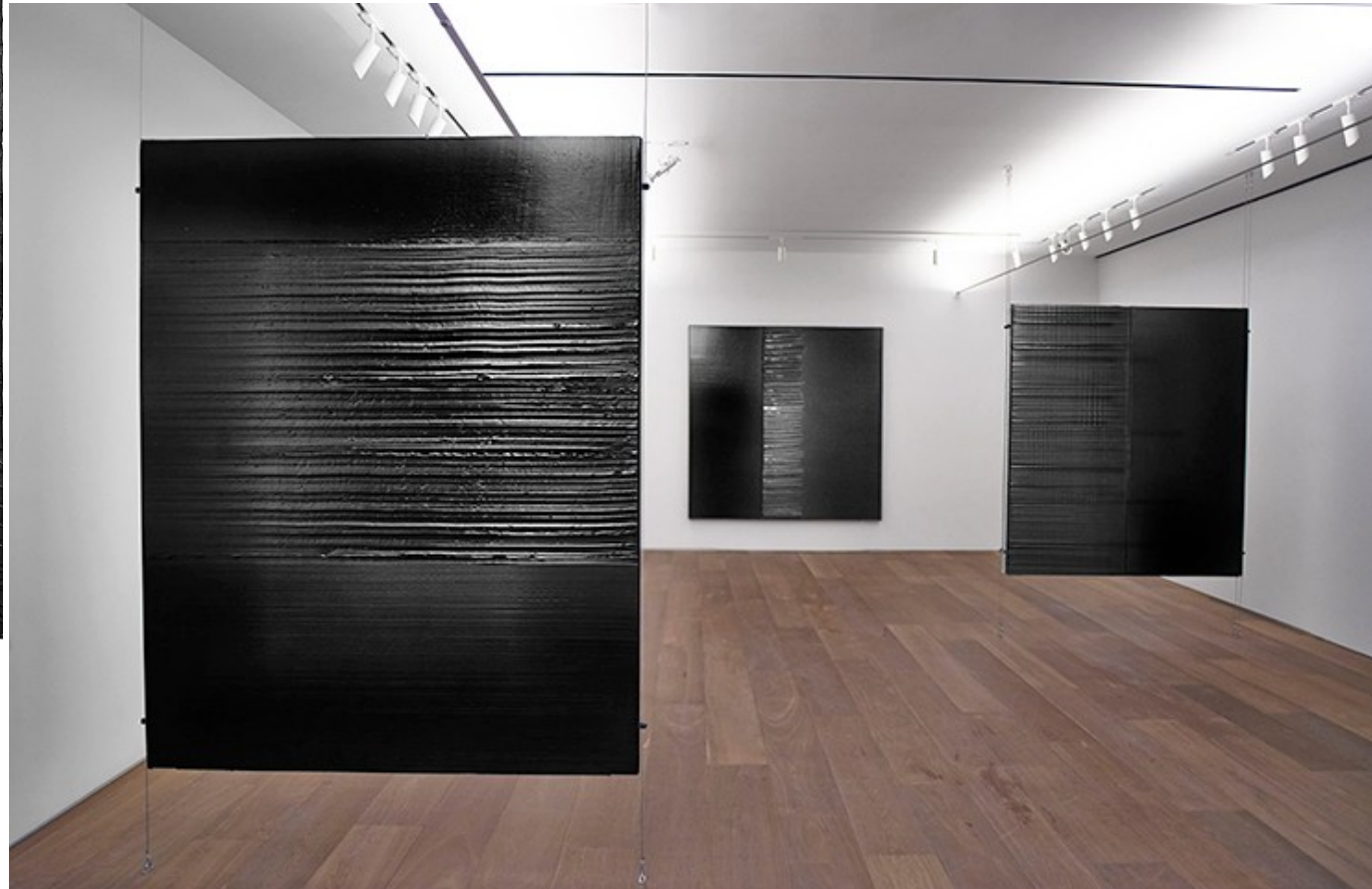
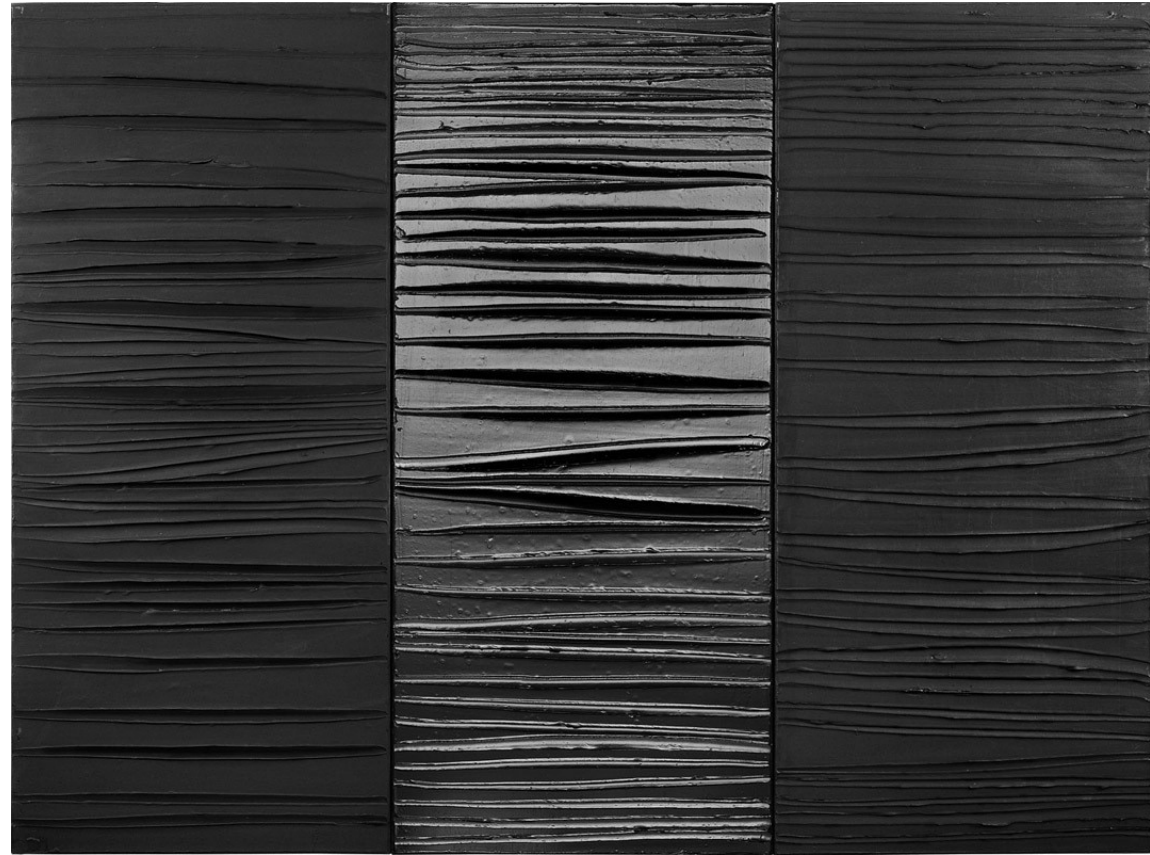


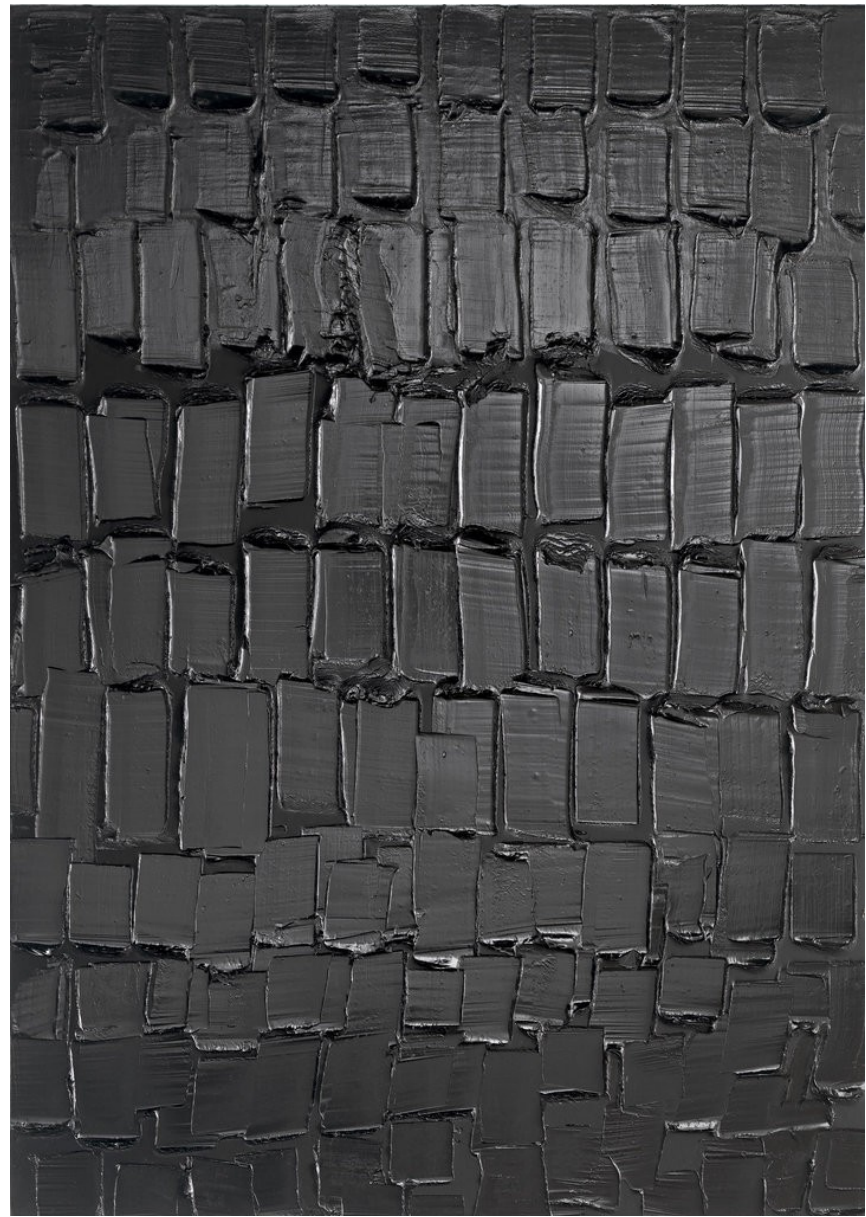
Peinture 125x202cm, 1958



Peinture 195x130cm, 1957

Outrenoir 1970 -





Peinture 202x143, 2019

# Alberto Burri 1915- 1995







Sacco – Composizione 1953



Sacco 1954



Red Plastic 1962



# Emilio Vedova 1919-2006





Tensione N 4 V, 1959





Il disco è un corpo vivo, inanimato... Non ha né labbra, né occhi, e non emette suoni, né odori, né sapori.

# Americká lyrická abstrakce





Jules Olitski

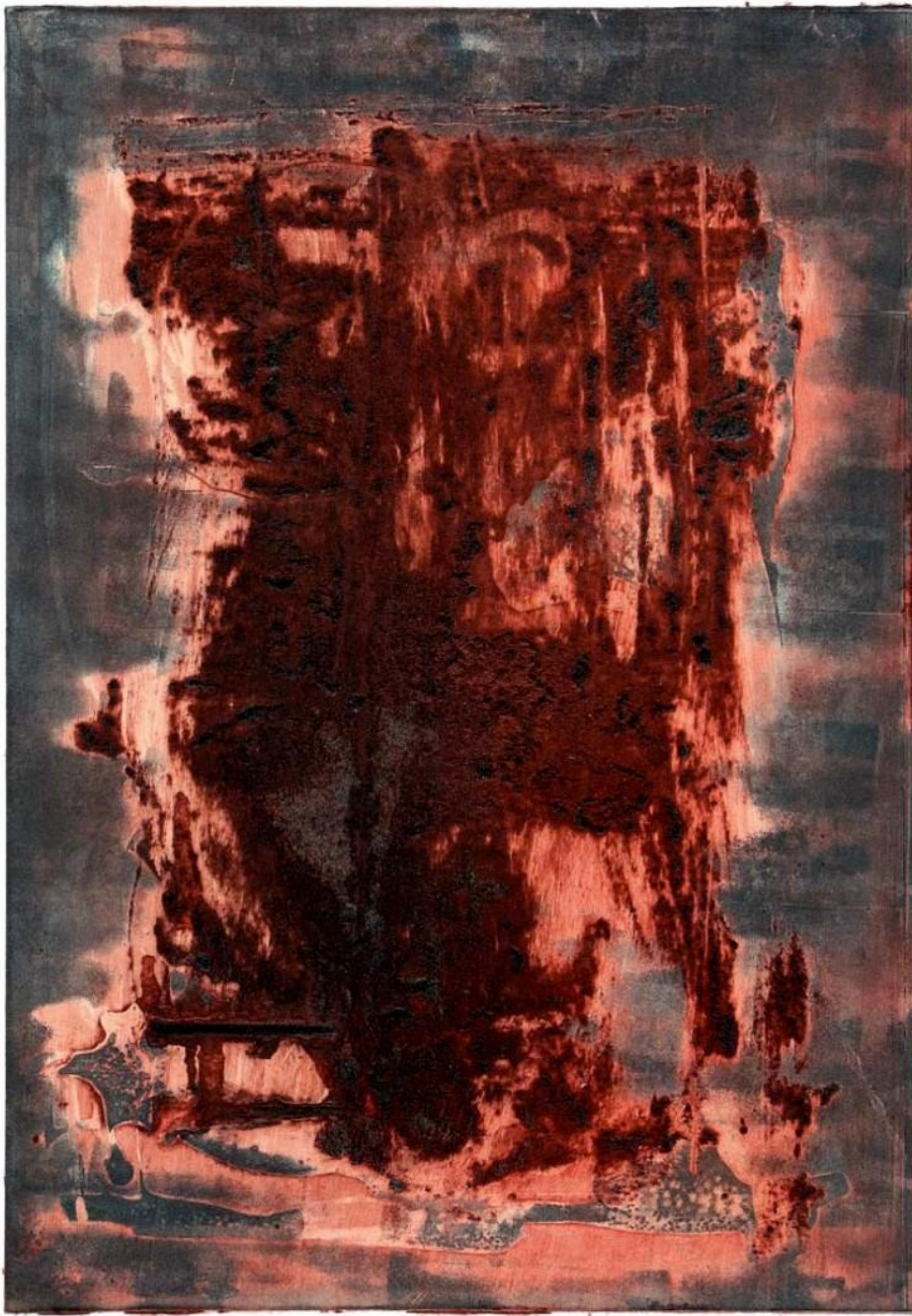


Larry Poons

Český informel

# Vladimír Boudník 1924-1968





Strukturální grafika XXI 1963



В. Зановић 1965

# Robert Piesen 1921-1977





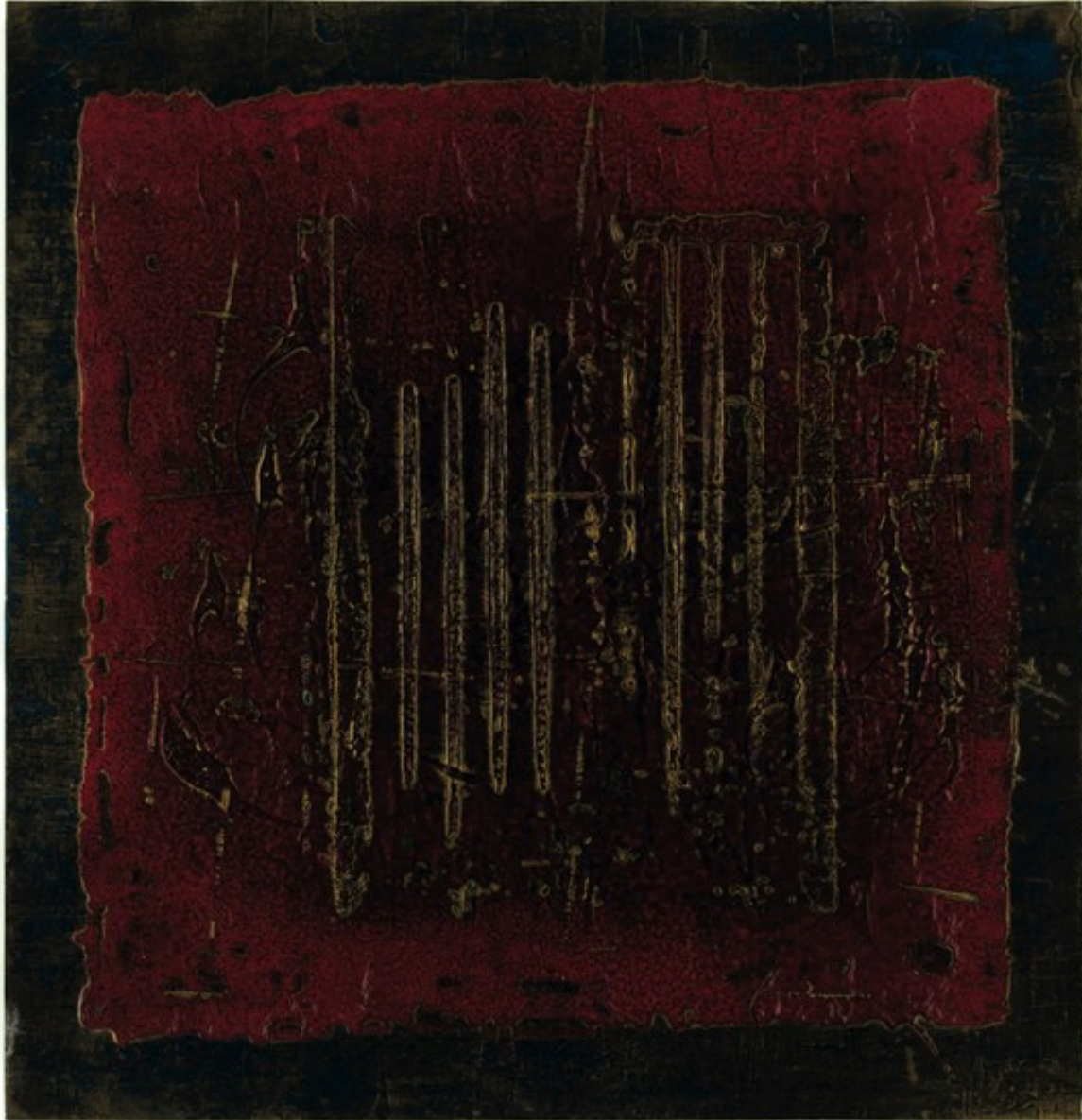
Magma 1961





Gehinnom 1963

# Pavla Mautnerová 1919 -



Bez názvu 1961

# Jan Koblasa 1932- 2017



Co je dole je i nahoře