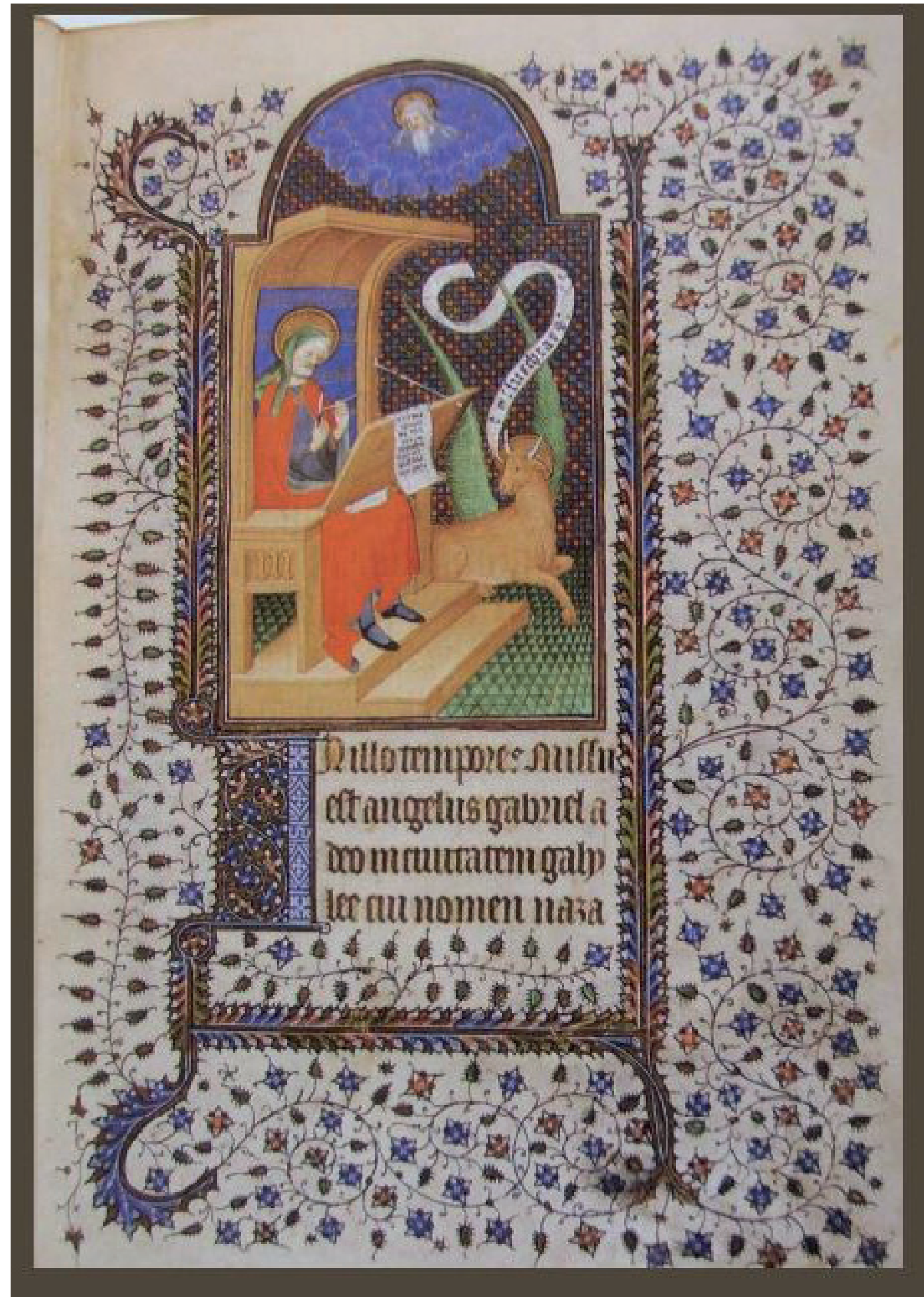
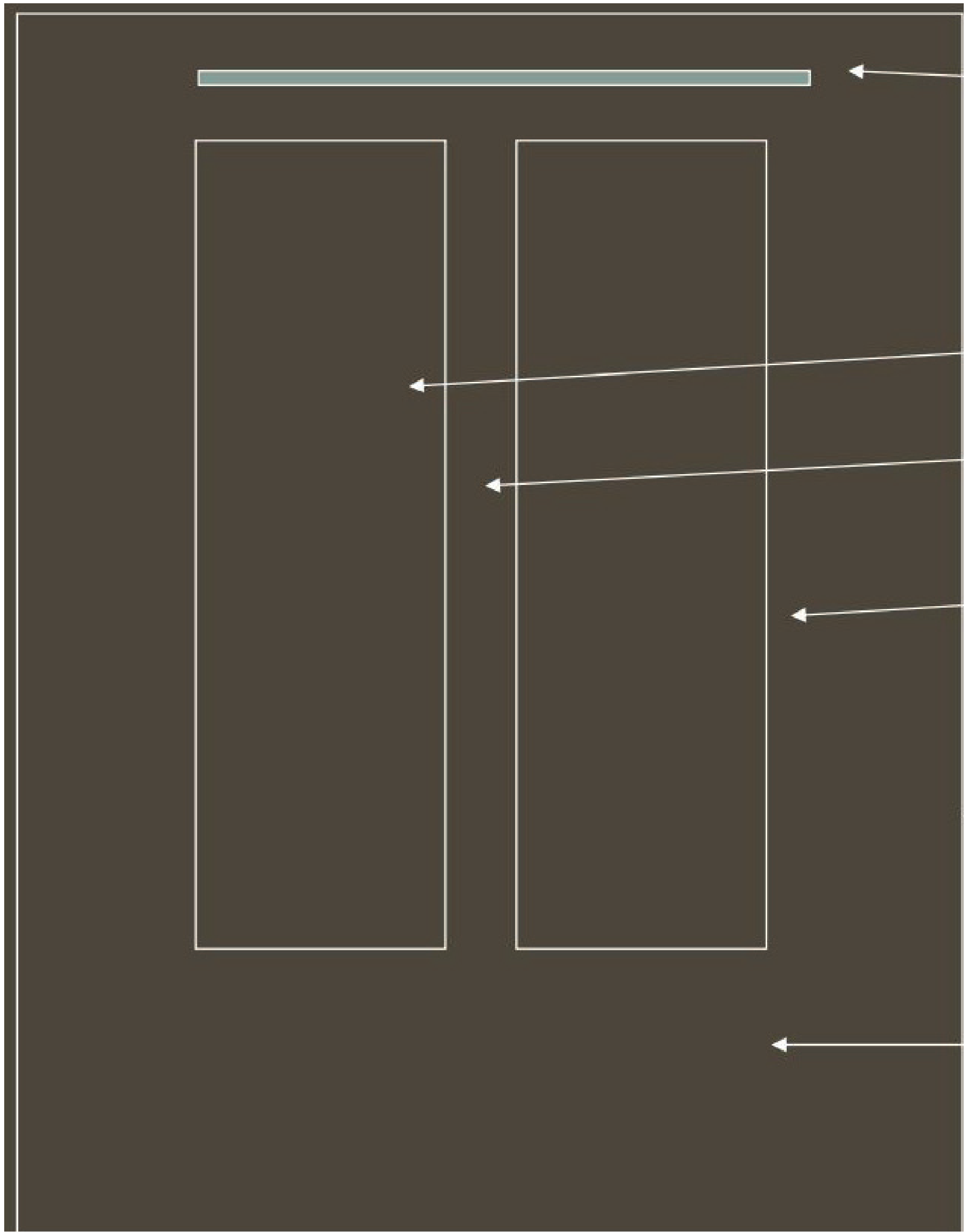


Bookillumination - technique



Writing and Layout



Headline

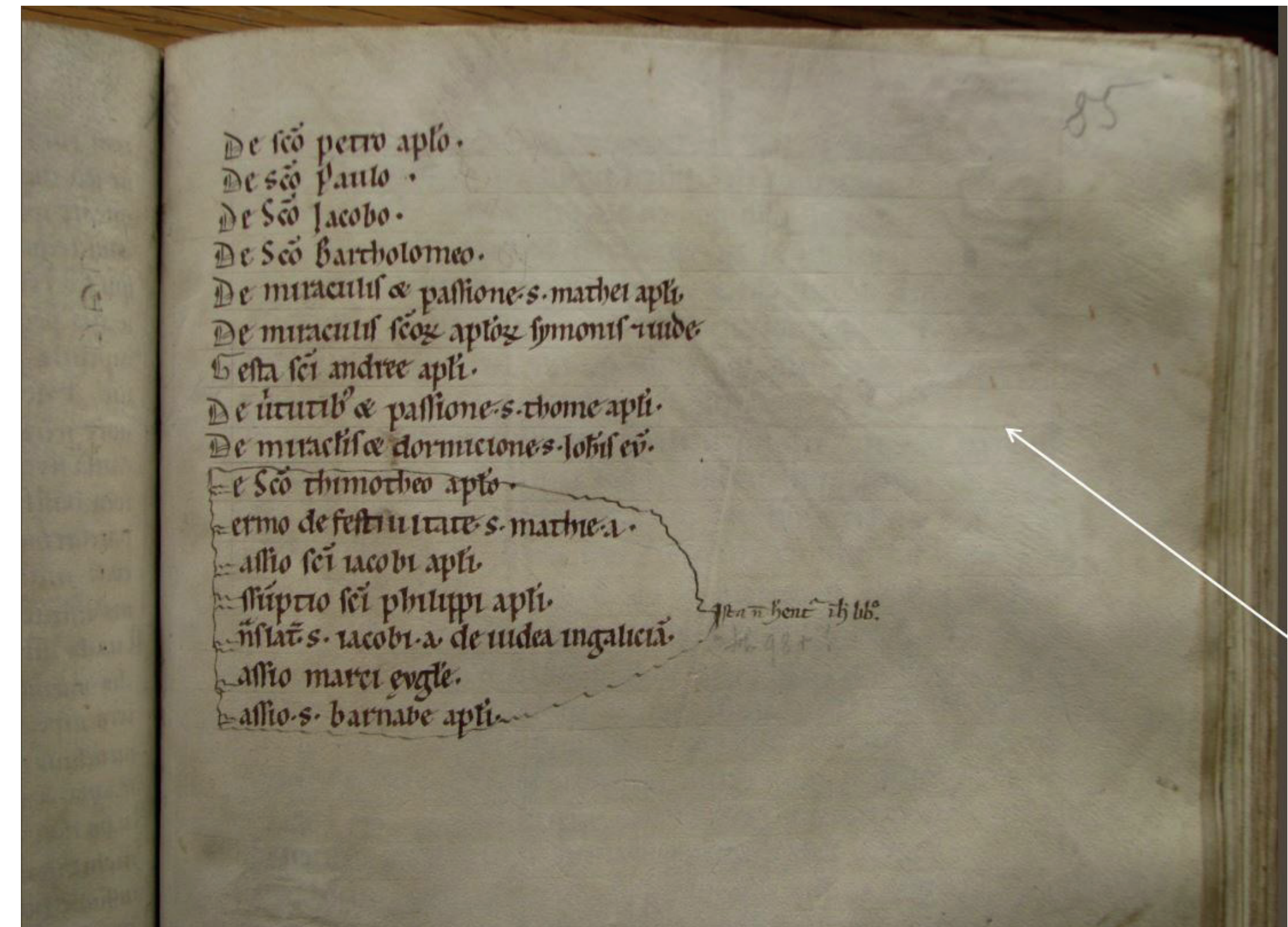
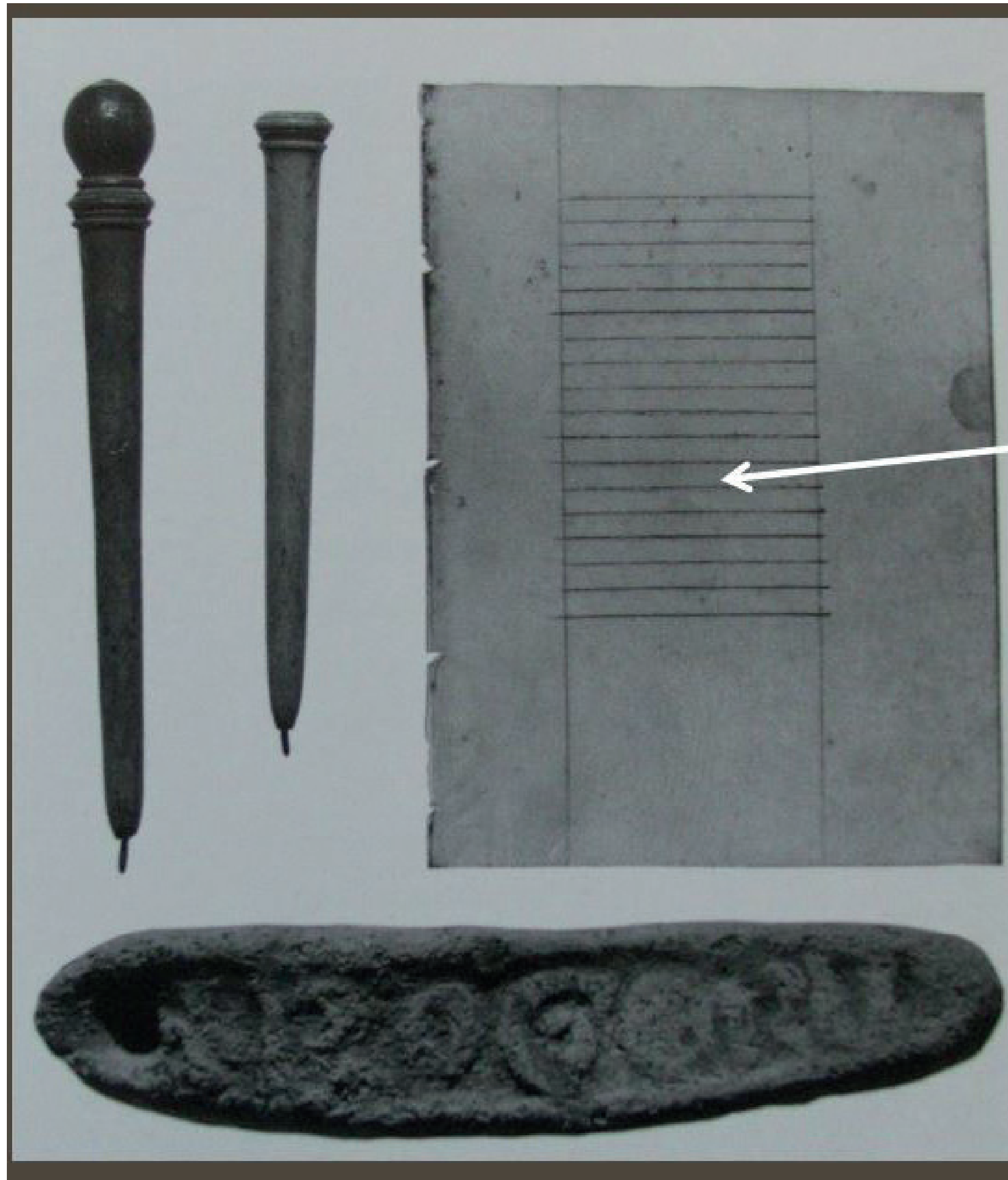
column (a, b)

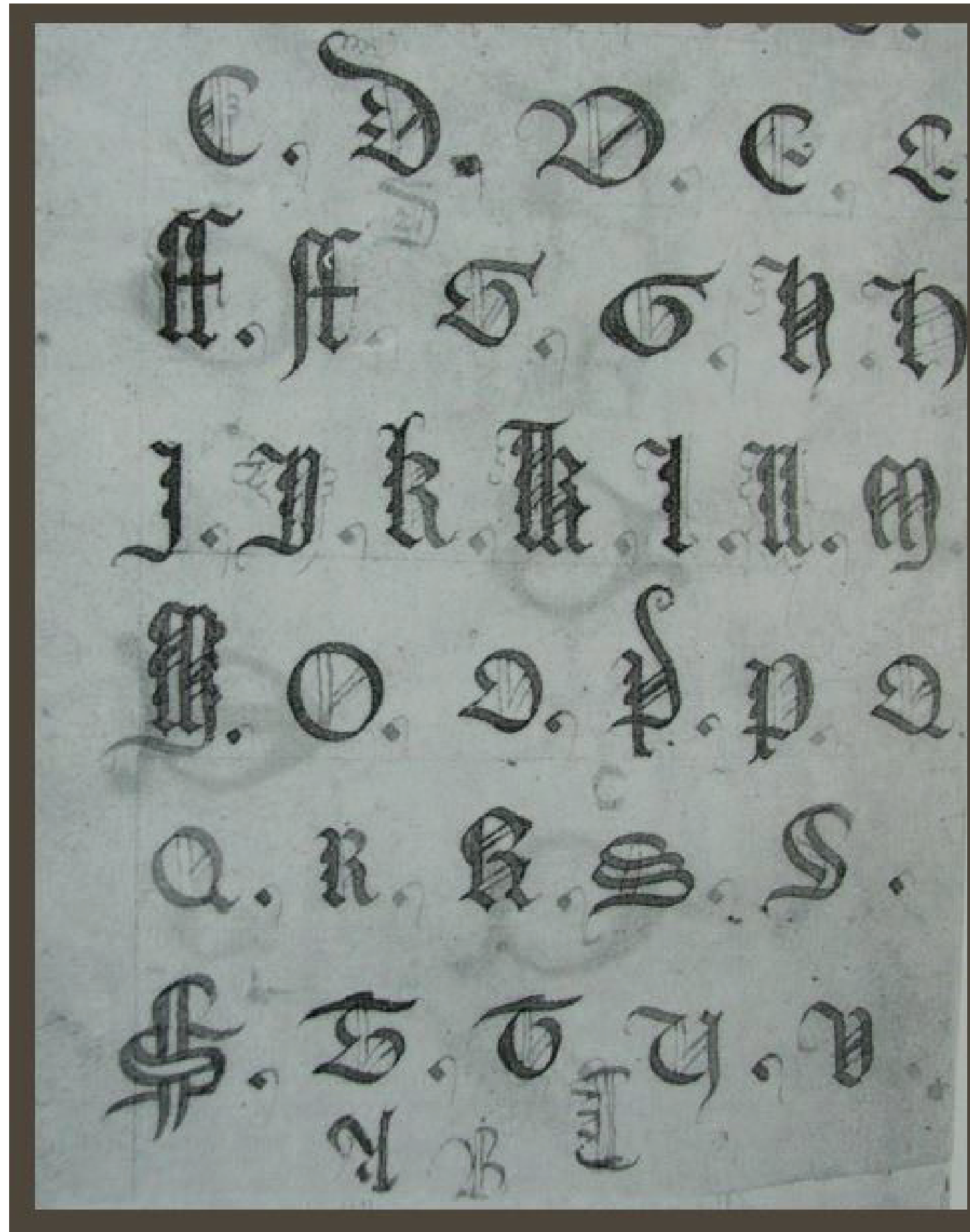
intercolumnium

margin

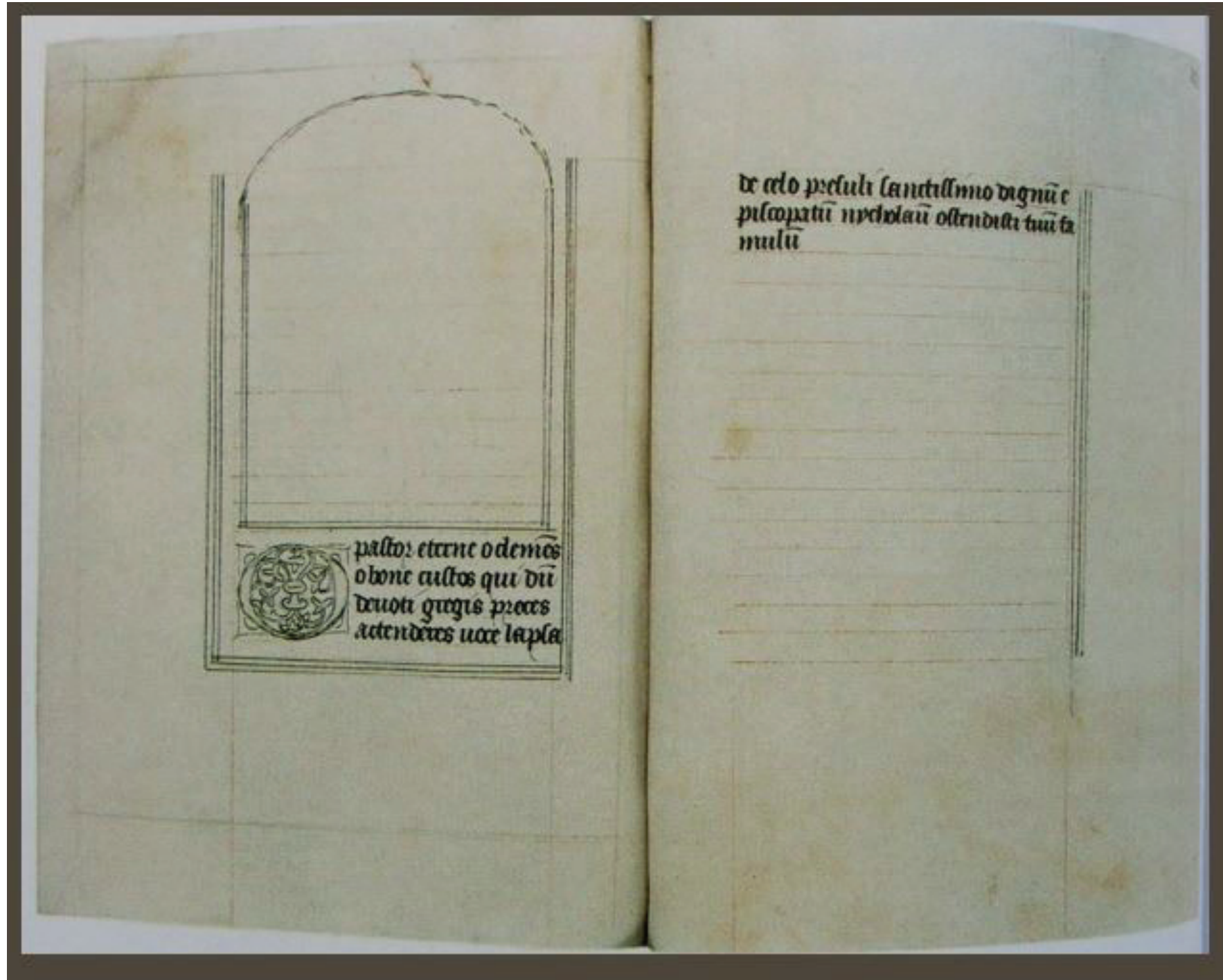
Bas-de-page

Preparations before writing

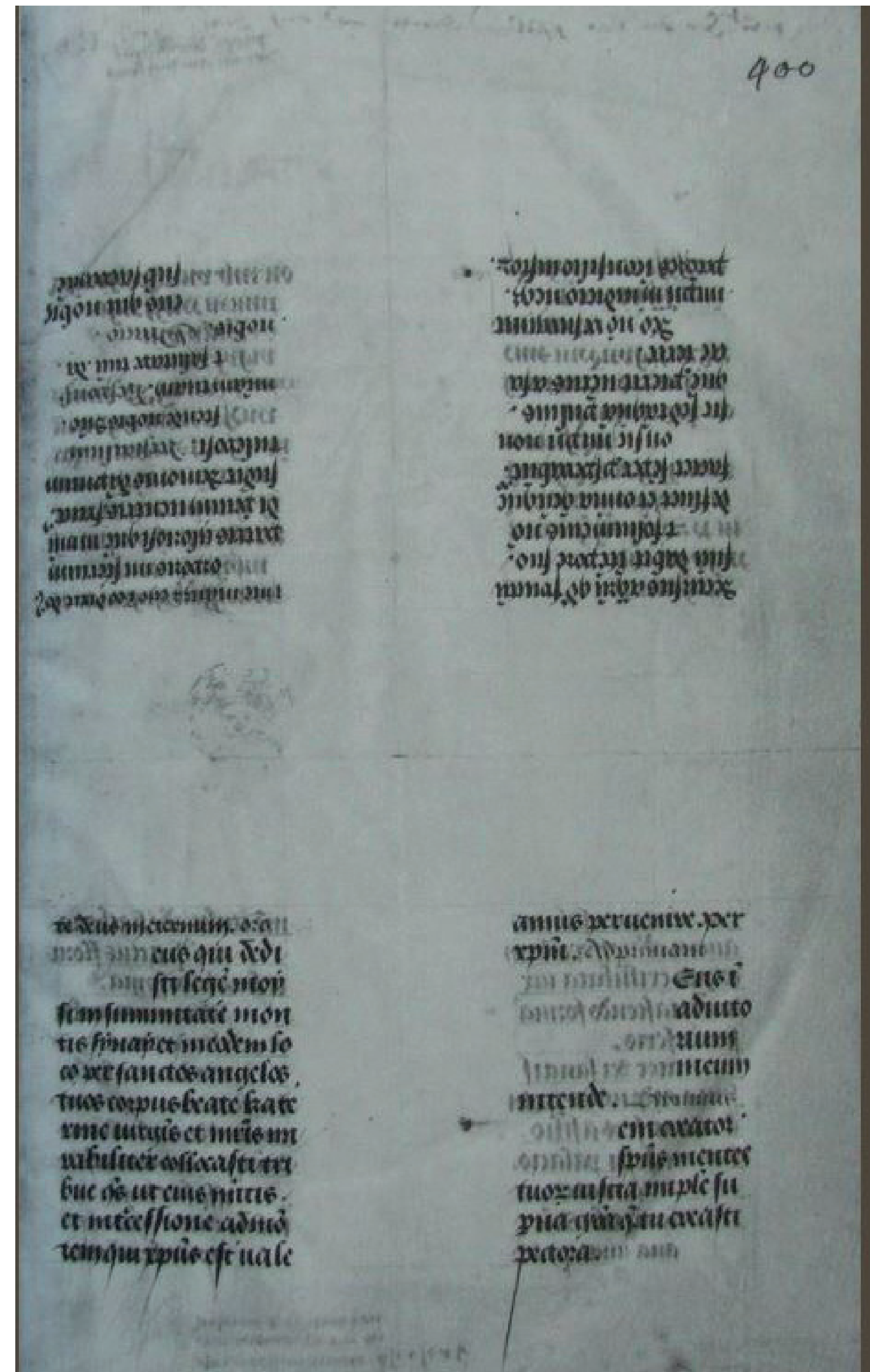


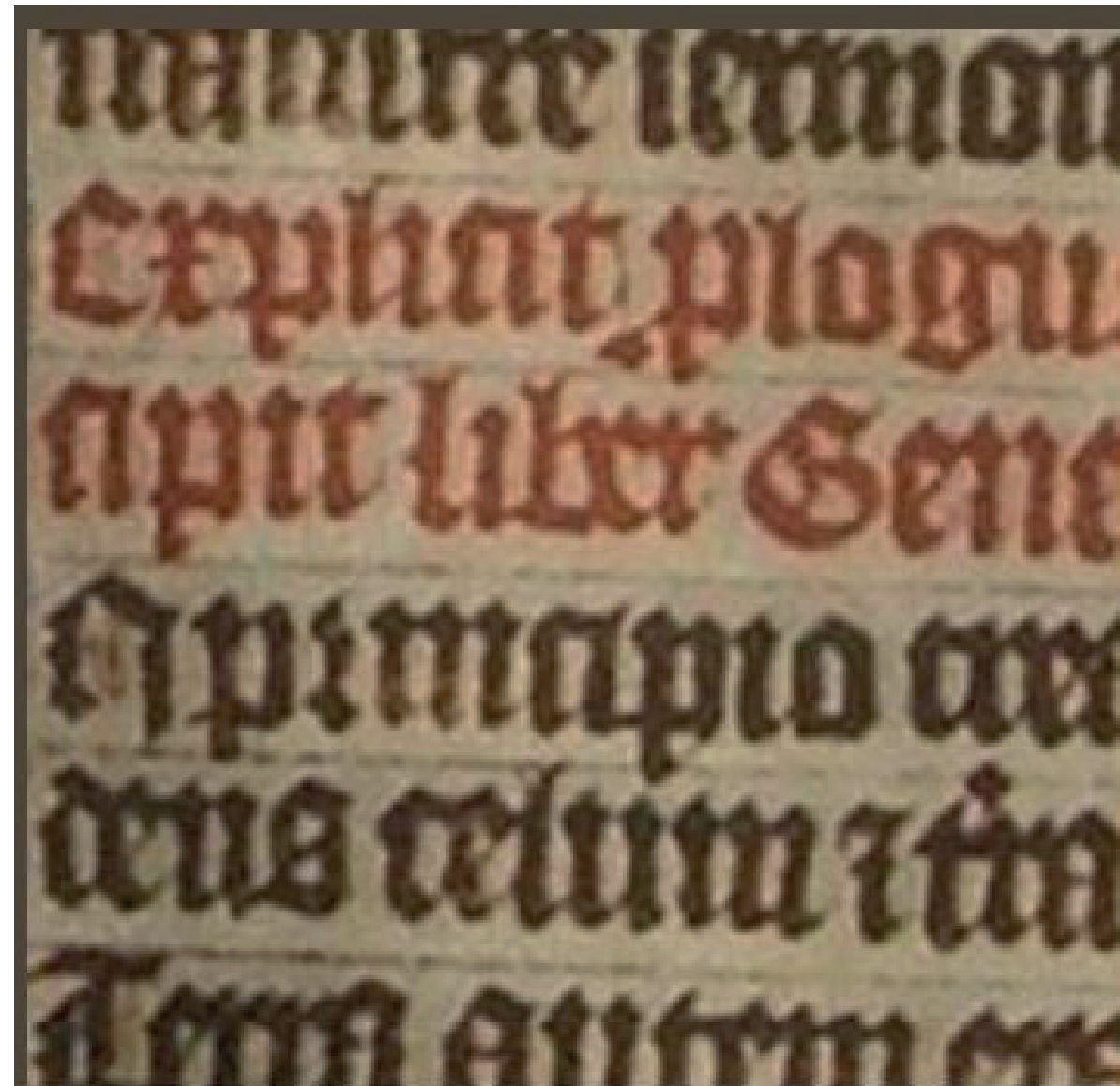


Lettertype samples and sample sheets for customers



Distribution of the text in consideration of future book illumination





Rubrication with Minium red, insertion of the initials and lombards

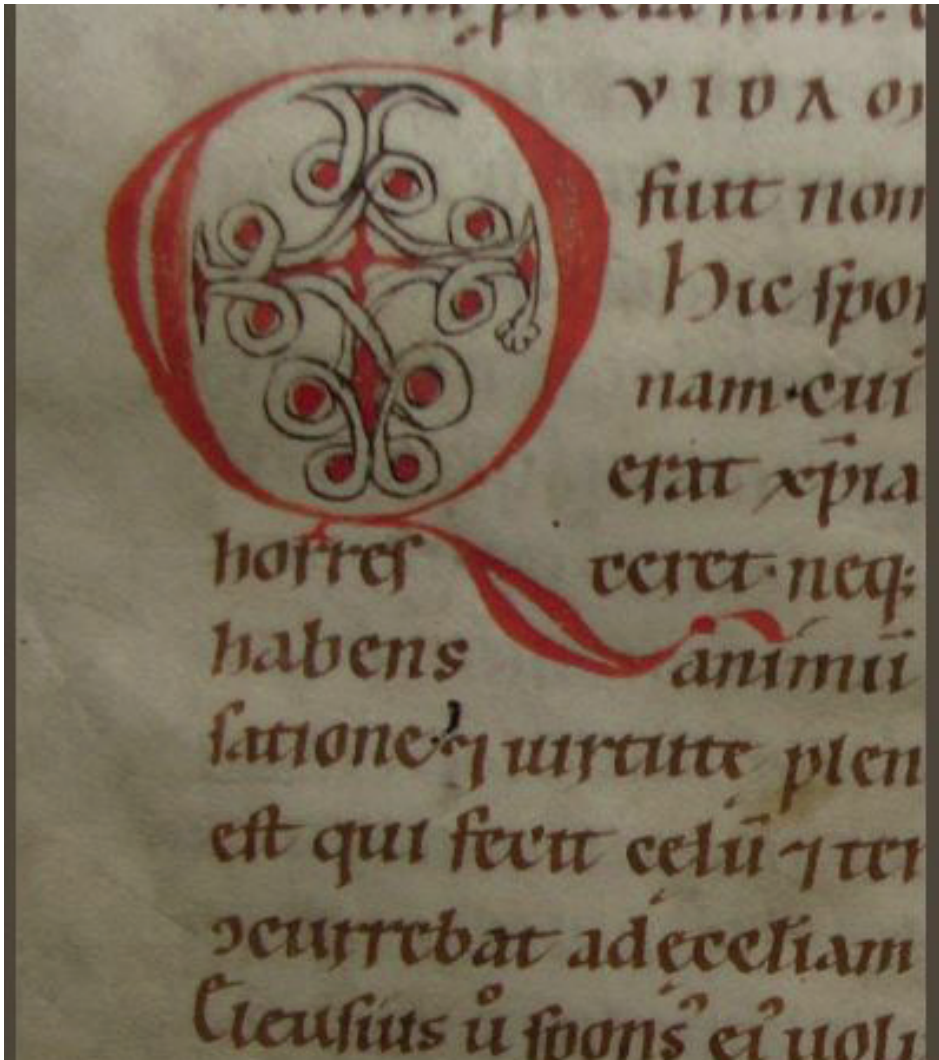


In use since the 12th century: decoration of the letters with so-called penwork-decoration („lettre fleuronnée“).

Hierarchy of letters



Cadelles



Lombard

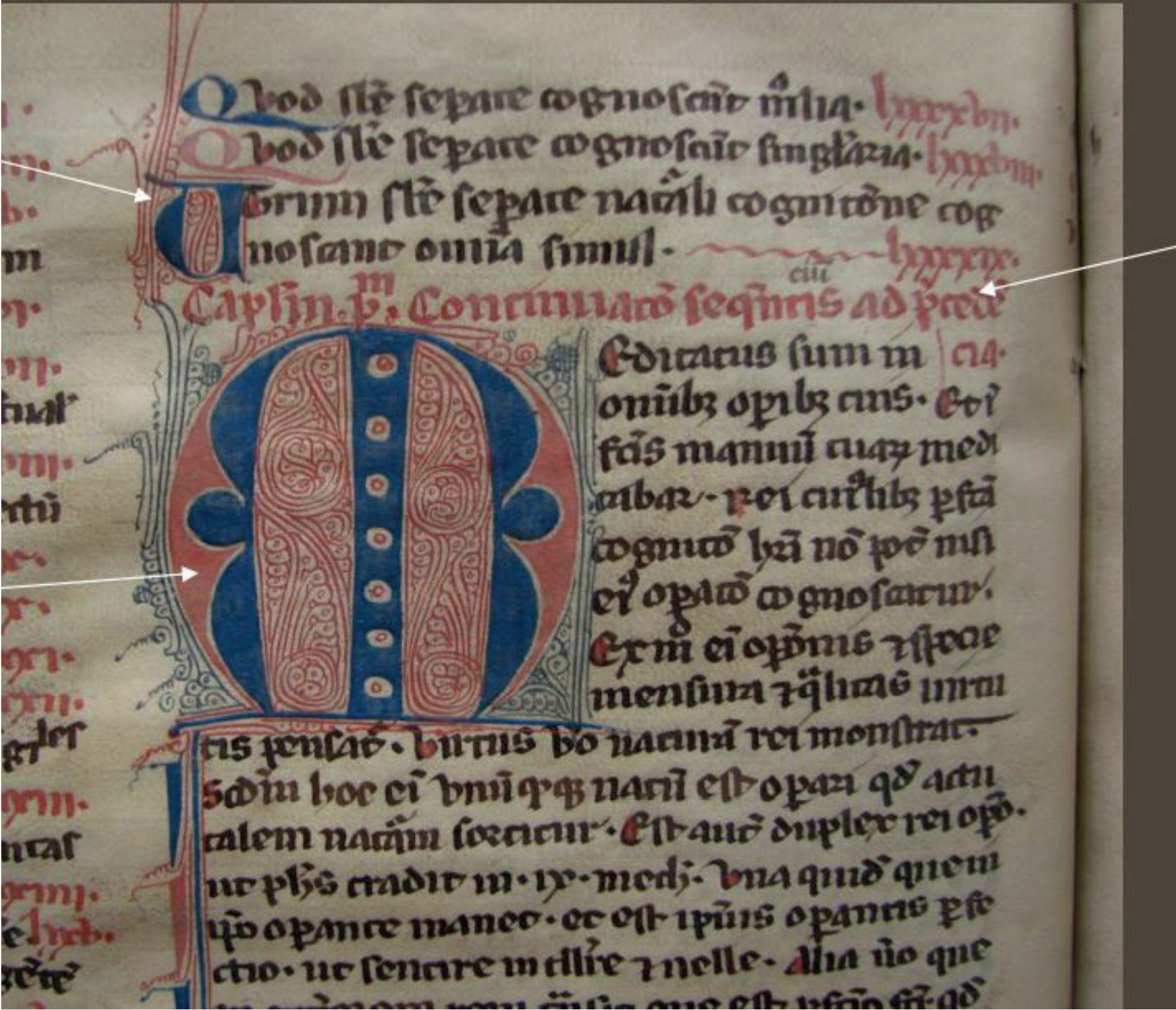


Initial

Clarification of the sections of contents

Paragraph:
small
„lombard“

Chapter:
larger
„initial“



Rubric introduces
the chapter

(„rubrum“: red)



washed pen and ink drawing



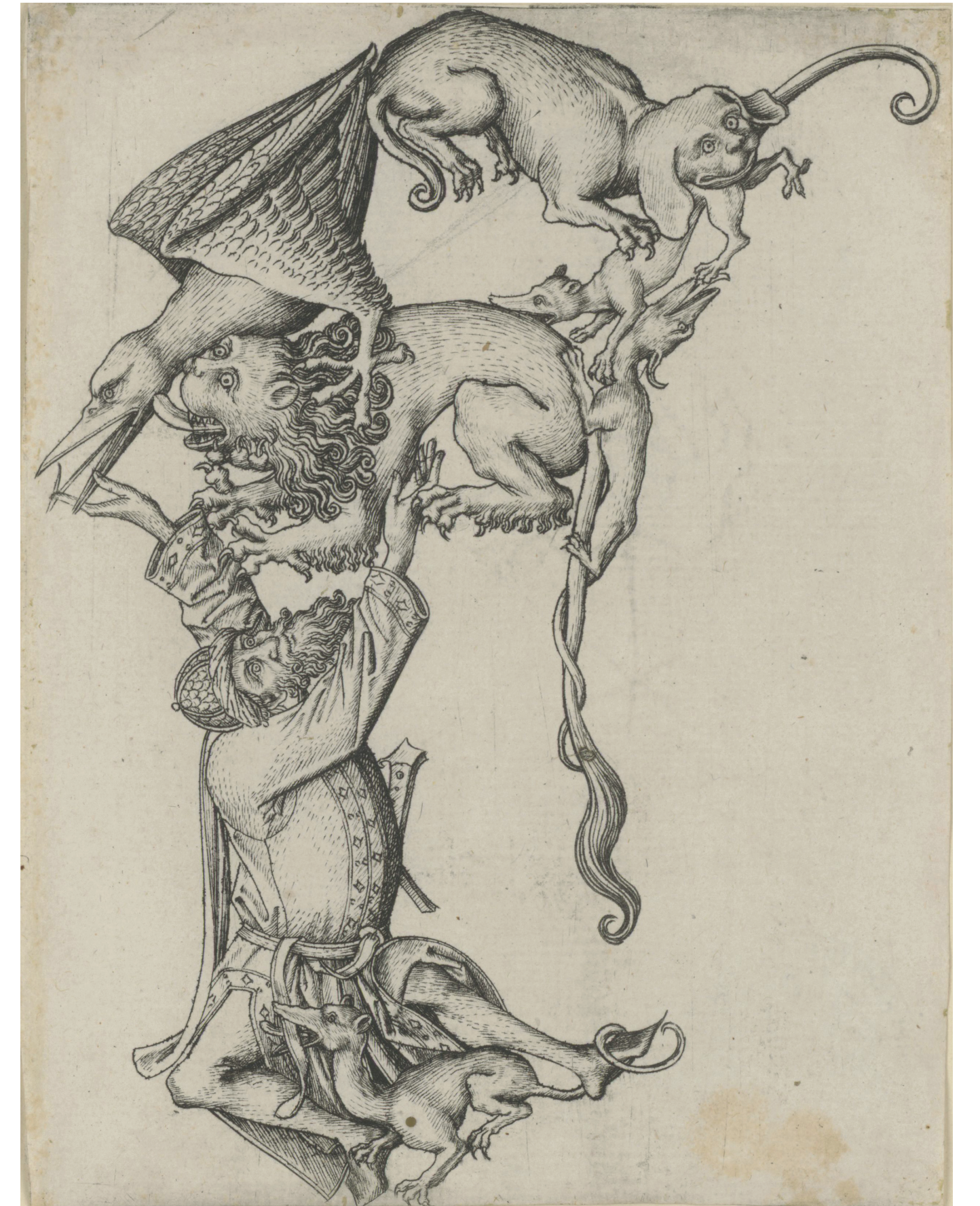
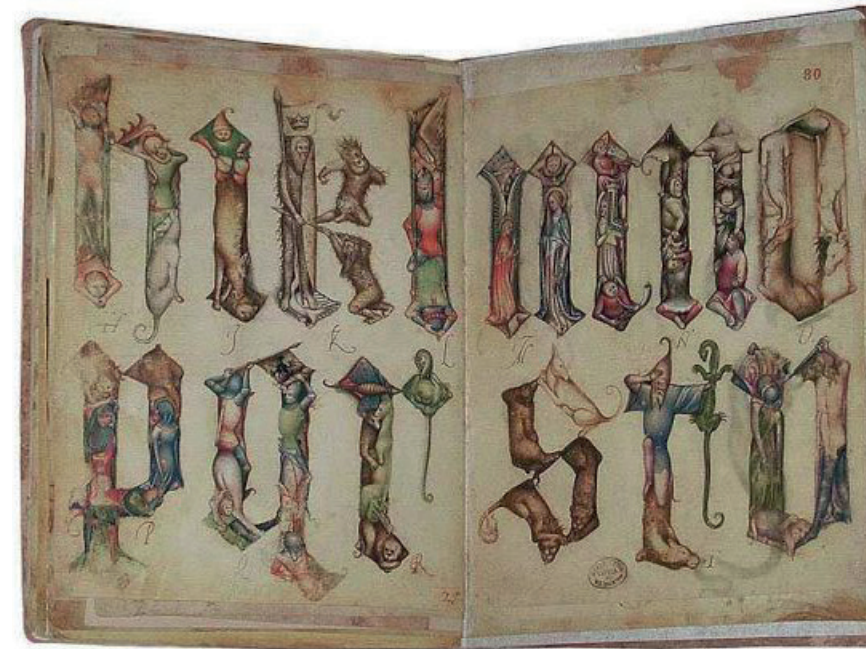
Göttingen pattern book (15th century) with detailed instructions for painting in five layers of coloured opaque paint: e.g. leaves, tendrils



Viennese Presentation Booklet, c. 1400 (KHM) Figures

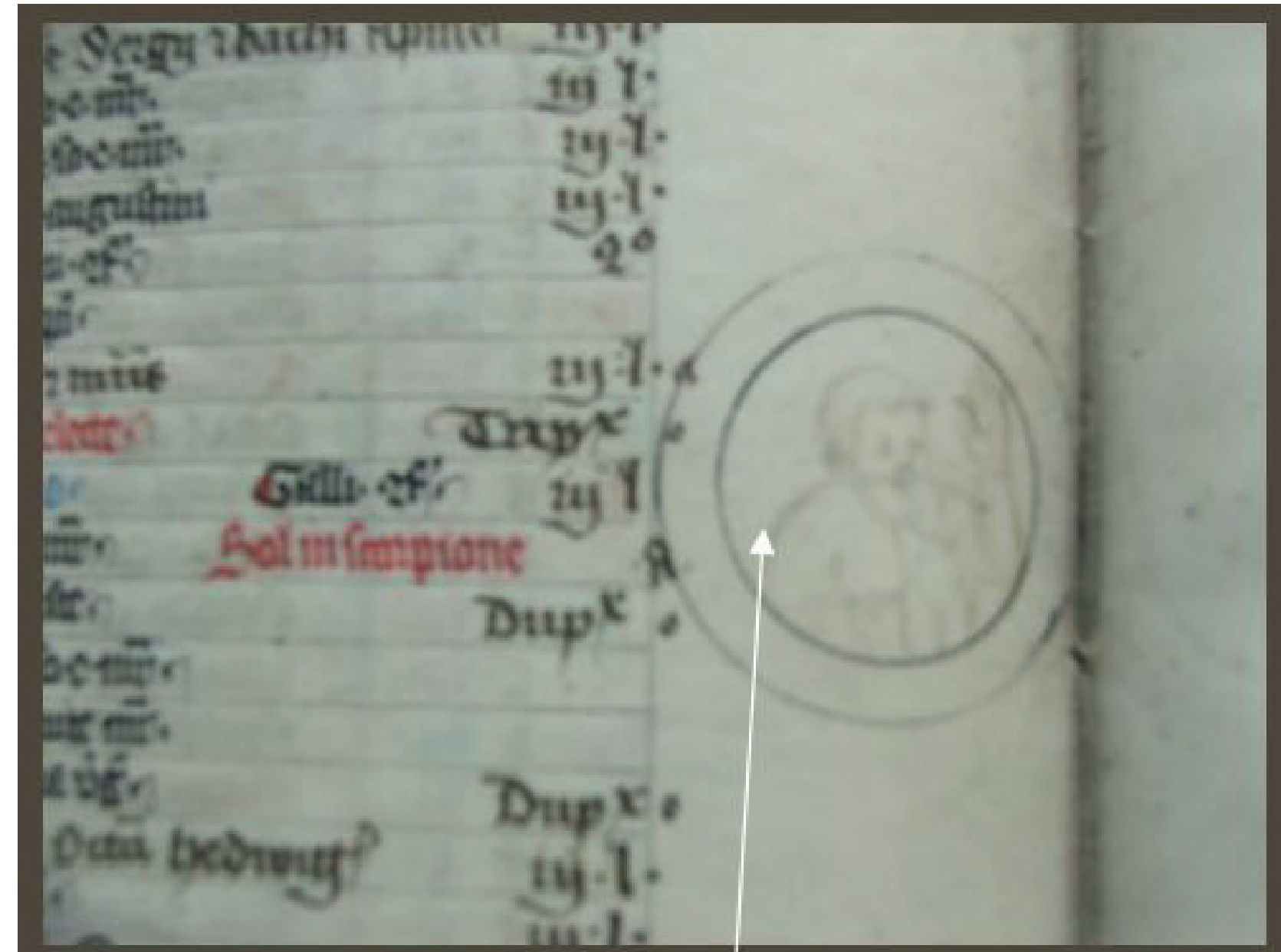


Engraving: Playing Cards („Bird Three“) by the Master of Playing Cards c. 1450



figurative initials

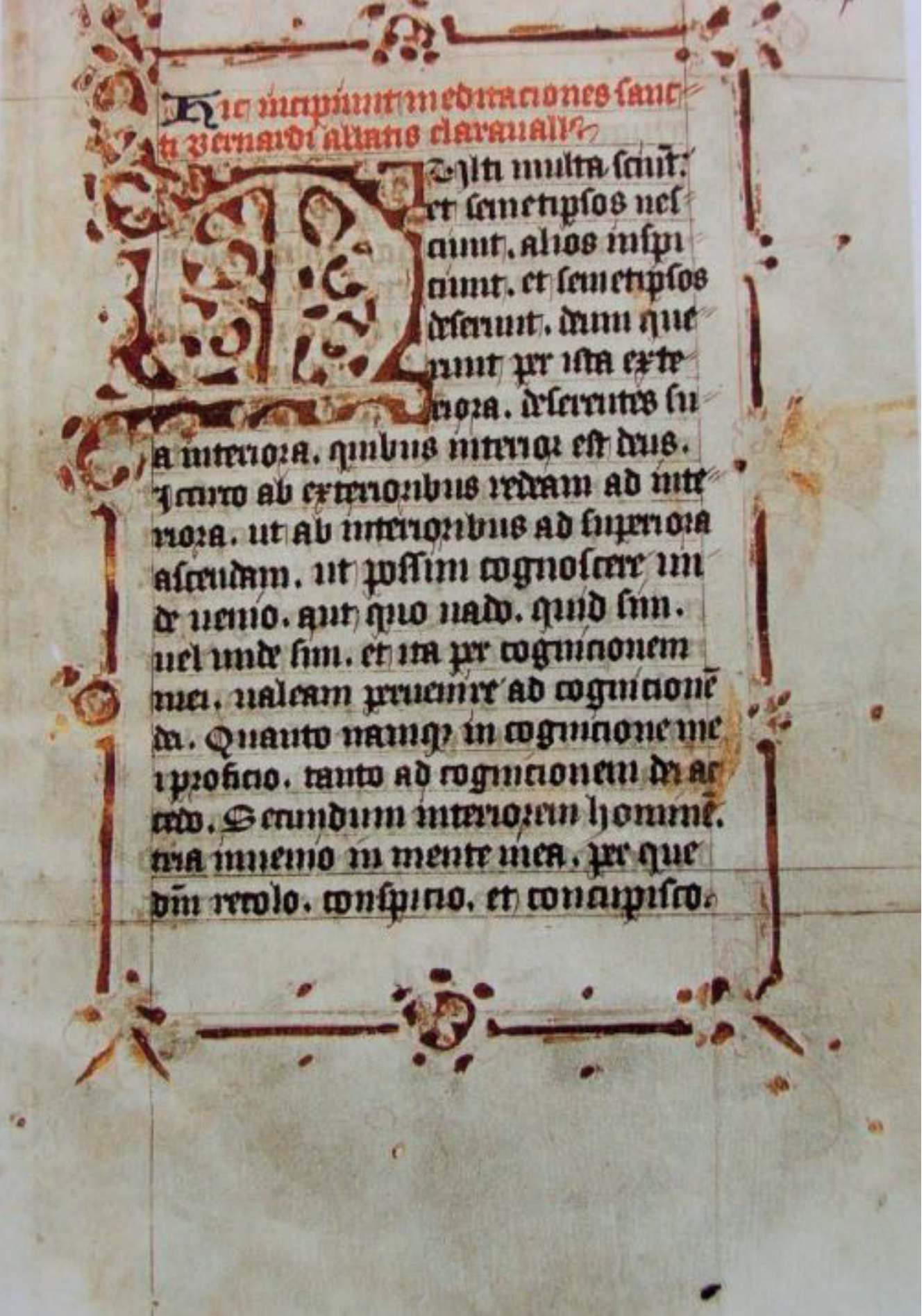
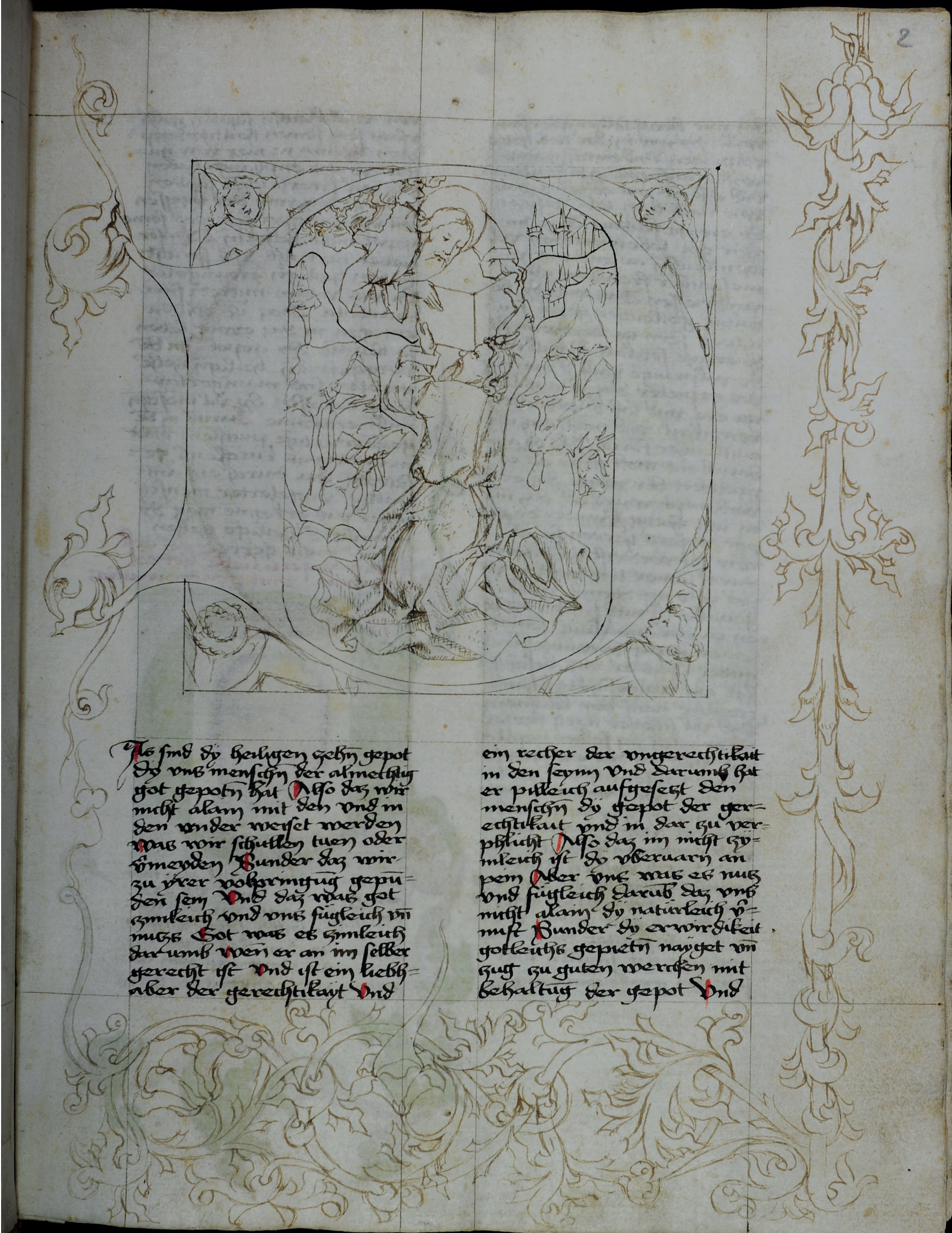
Sketching figures and ornaments



Transfer of
ornamental
forms and
sometimes even
figures by means of
stencils

Tracing (with stencil and charcoal dust)

Sketching



Preparation for gilding:
 Bolus primer

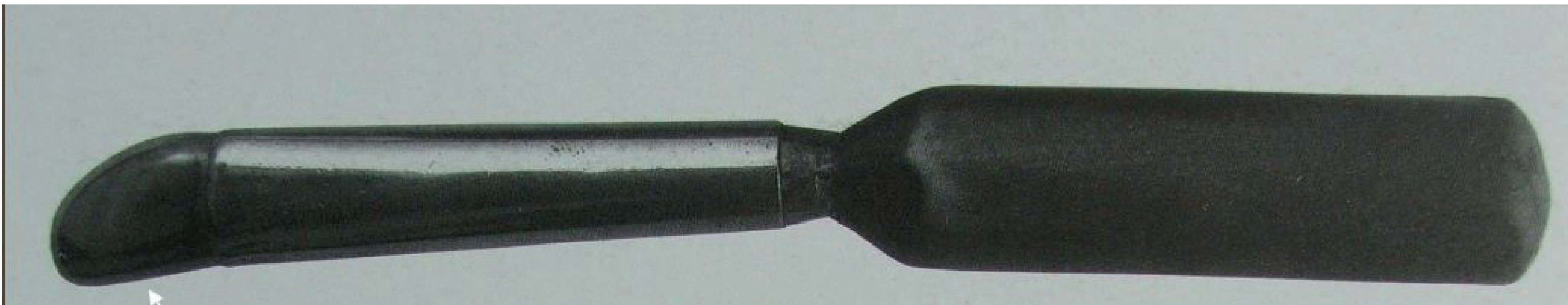


Gold leaf



Shell gold

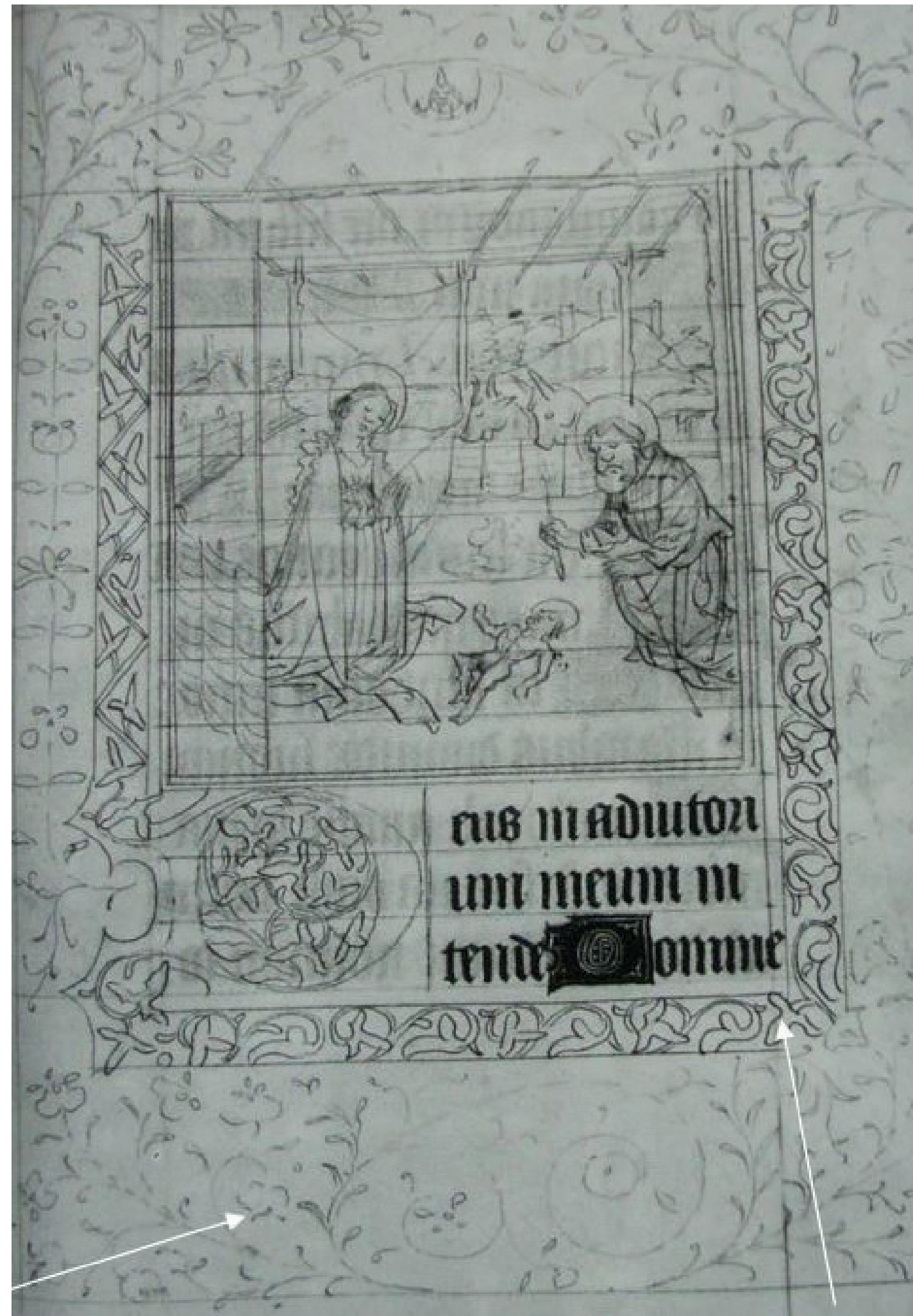
Shell gold is applied with the brush



Agate for polishing the gold leaf

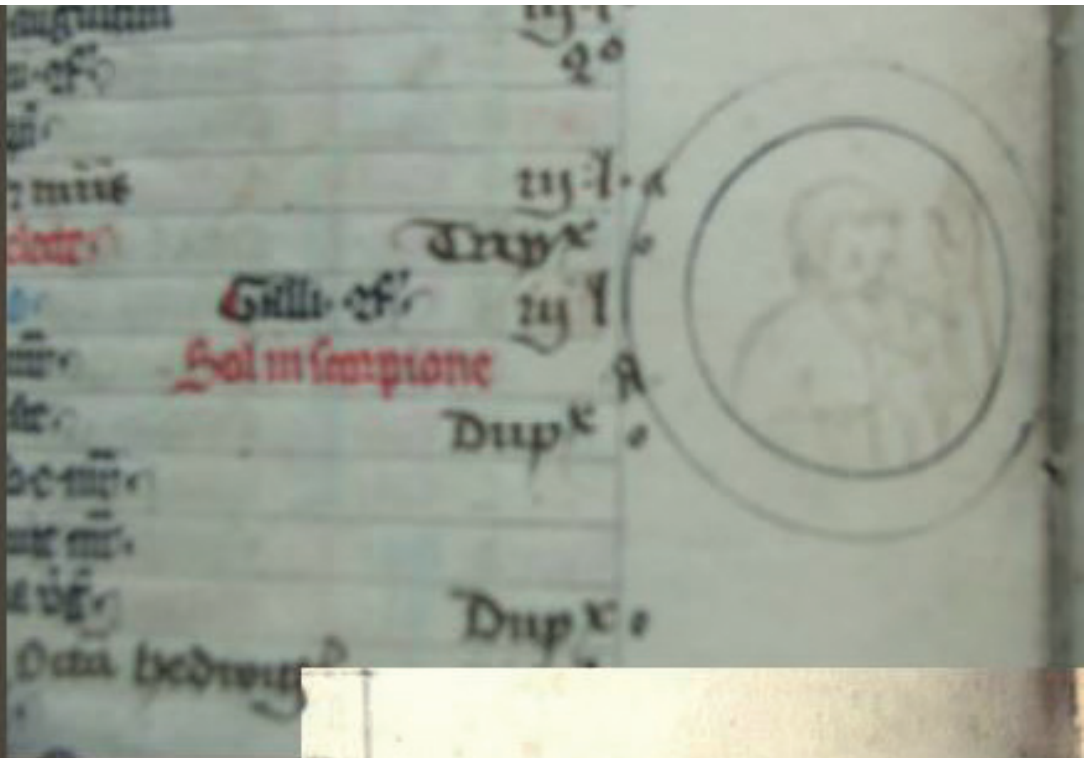
Additional decoration by embossing the gildings



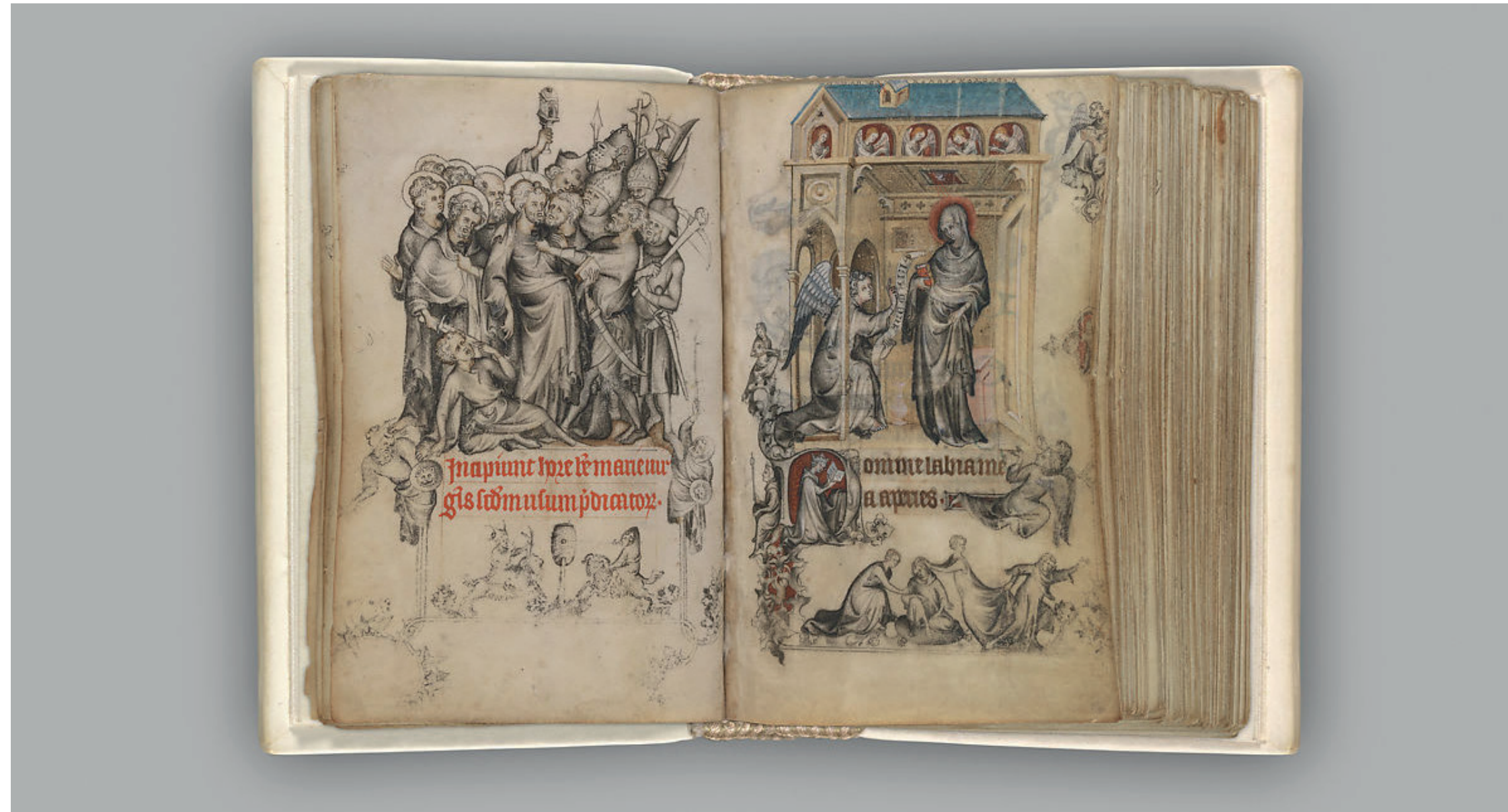


Gilding of lancet leafs

Painting in layers



Grisaille: Shades of grey



Demi-grisaille of Jean Pucelle in the
Book of Hours of Queen Jeanne d' Evreux.
Paris, 1325/28



<https://www.metmuseum.org/art/collection/search/470309>



Camaieu: tone on tone painting, coloured



historiated initial

drolerie

acanthus vines / tendrils

golden penwork