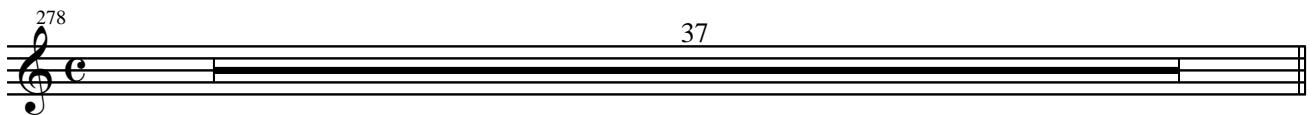
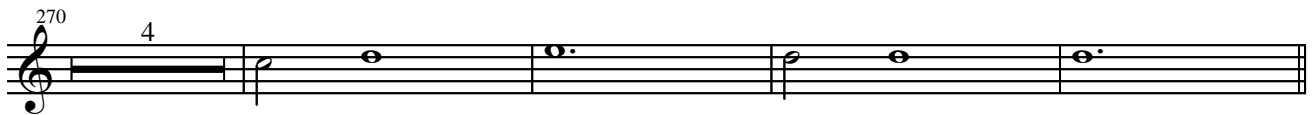
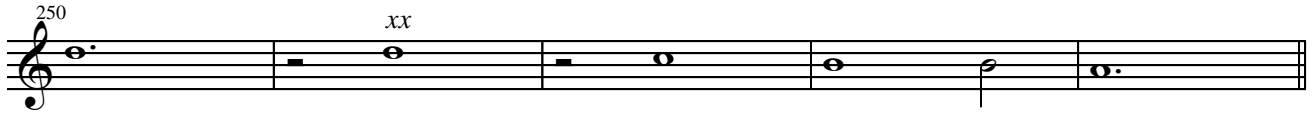


Regina Hester

This image displays the Violin I part of the score for 'Regina Hester' by J. Carissimi. The score is written on a single staff in treble clef, with a common time signature (C) at the beginning. The music is divided into measures, with measure numbers 7, 13, 18, 23, 29, 126, 132, 140, 149, 159, 172, and 179 marked at the start of their respective lines. The score includes various musical notations such as notes, rests, and accidentals. There are several instances of repeat signs with first and second endings, and some measures contain fermatas. The key signature is one sharp (F#), and the time signature changes to 3/4 in measure 29 and back to common time in measure 126. The score concludes with a double bar line at the end of the final line.



331 13 9 26 3 8

390 7

400 5

409 3 2

417

421

425 9 4 2

442 3

449 3

456 2

462

467

472 7

484 4

492

497

502

507 5

516

521 10

535

540 10

554

559

564