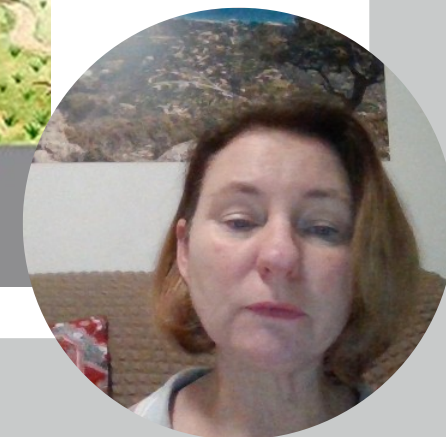
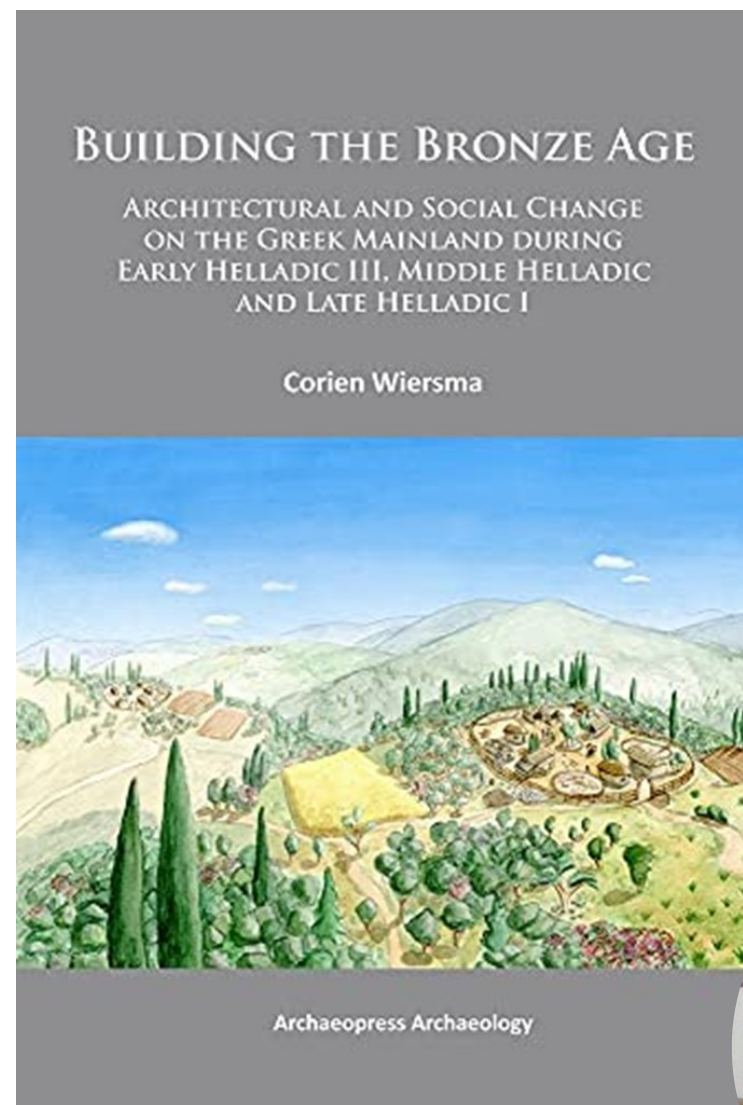


Early Helladic III

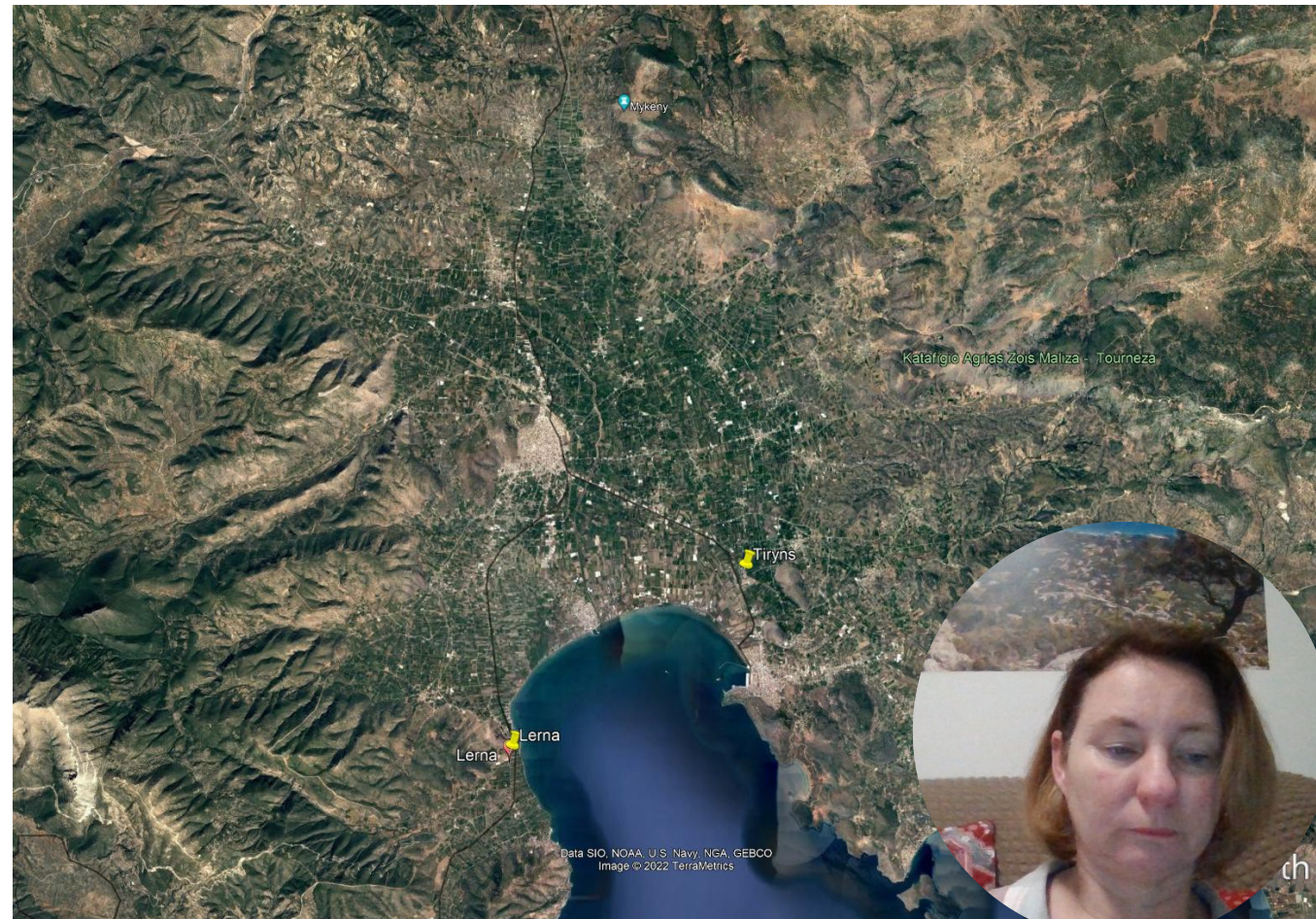
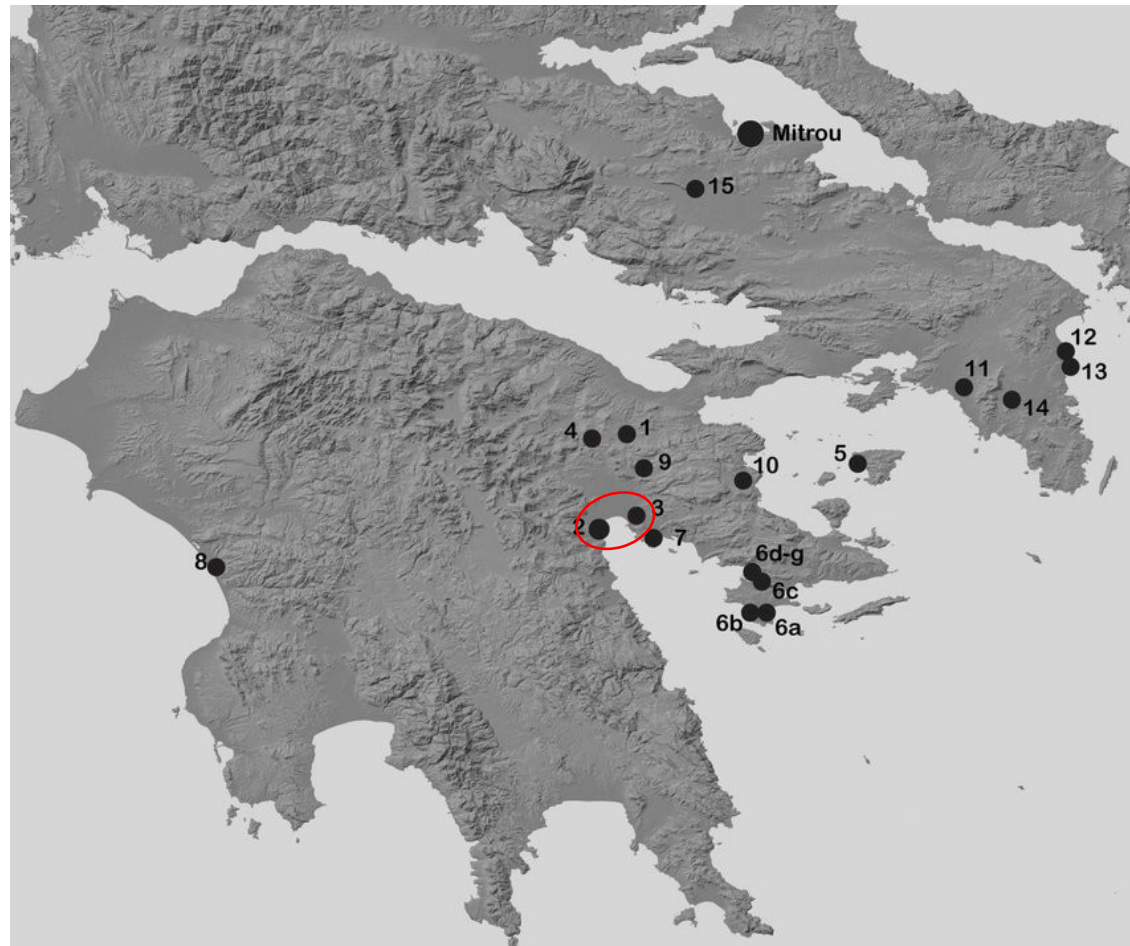
Doplnění



- Krátké období (2200 – 2000 B.C.)
- Těžko rozpoznatelná keramika
- Málo známé
- Trvající diskuse (AJA 2013 – celý svazek věnovaný tomuto období v Egeidě – Minding the gap)
- Dříve se považovalo za období výrazných změn – dnes není tak jednoznačné (rozvoj – stagnace – kontinuita – diskontinuita)



- Řecká pevnina a severní Kyklady: destrukce, opuštěné lokality, úbytek obyvatelstva
- Lerna EH III(D) a Tiryns
 - Erika Weiberg, & Michael Lindblom. (2014). The Early Helladic II–III Transition at Lerna and Tiryns. Revisited: Chronological Difference or Synchronous Variability? *Hesperia: The Journal of the American School of Classical Studies at Athens*, 83(3), 383–407. <https://doi.org/10.2972/hesperia.83.3.0383>



Rozdíly

Tyrins

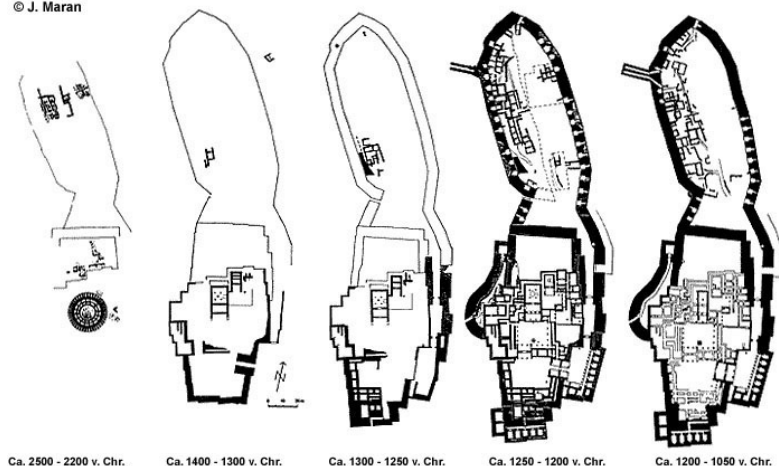
- Rošíření Dolní citadely a kontinuita

Lerna

- Destrukce
- Vylidnění
- Speciální úpravy pozůstatků

Odlišné keramické sekvence

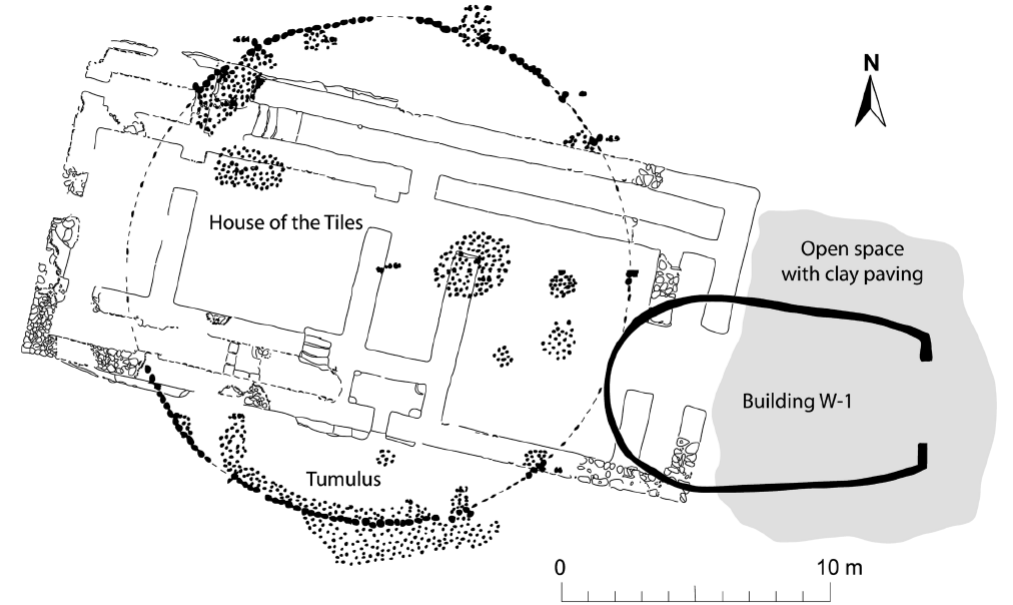
© J. Maran



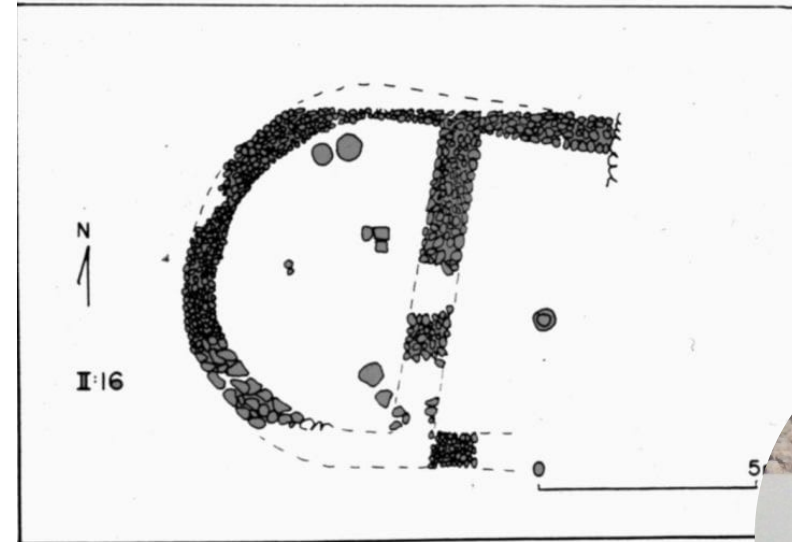
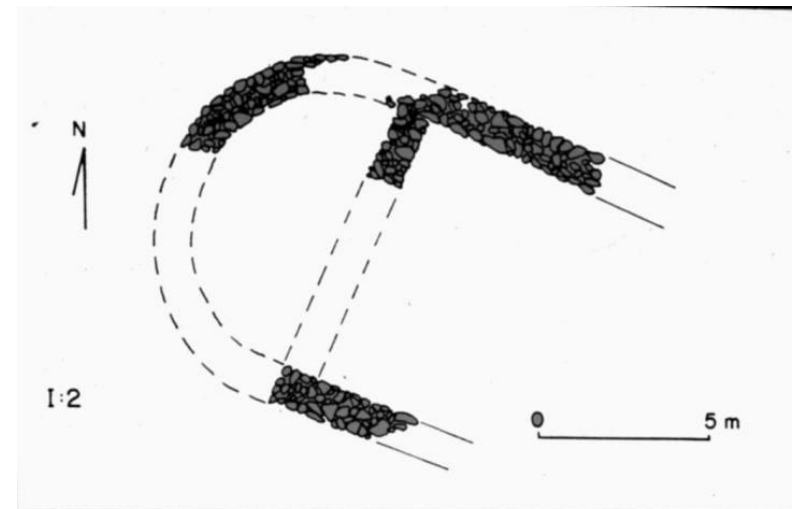
Tyrins



Lerna



Théby – apsidální stavba

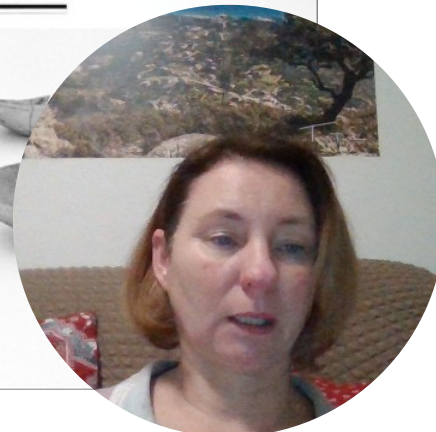
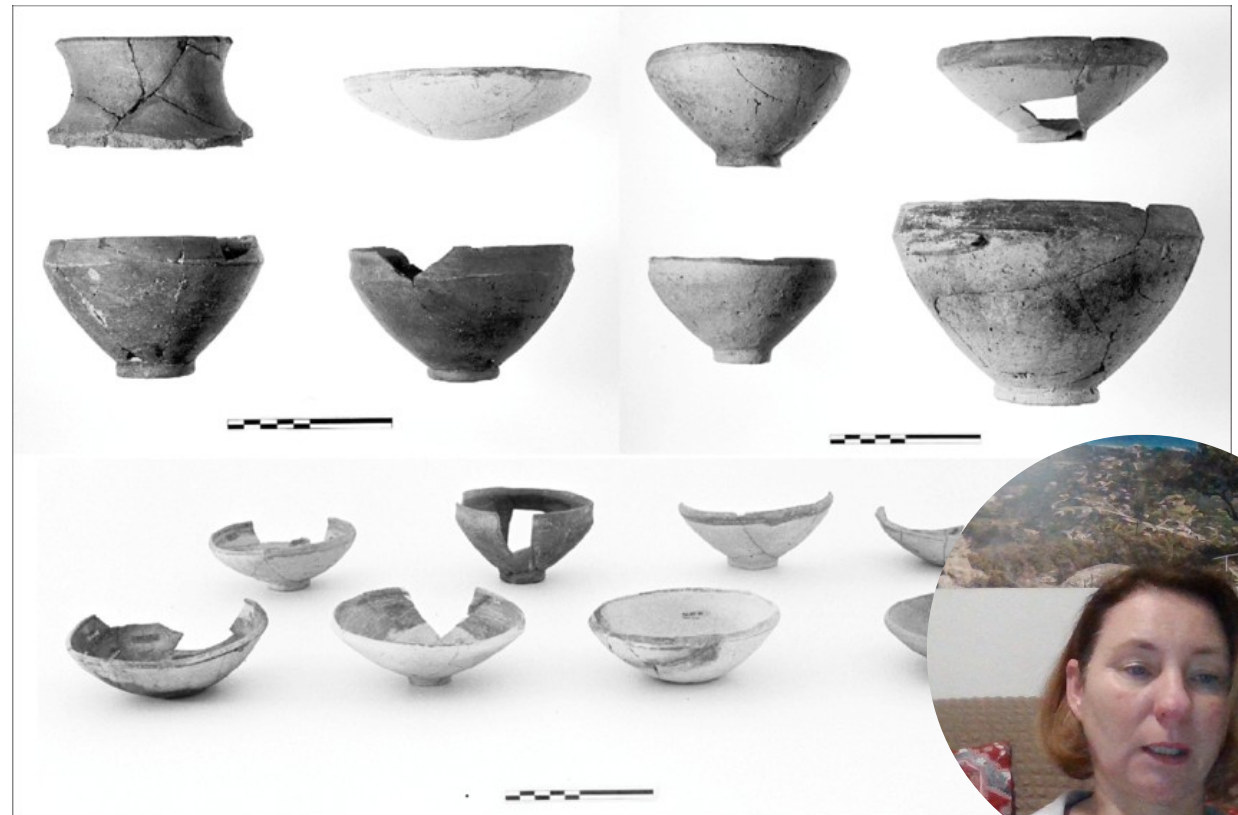
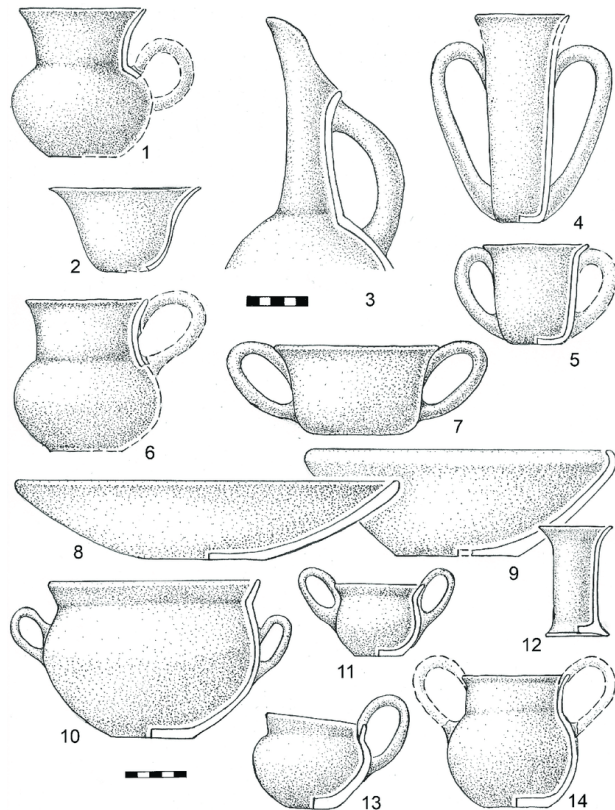


Thebes. Early Bronze Age apsidal buildings



Lerna

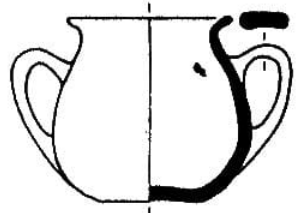
- Lerna III a IV = EH III
- Výzkum a stratigrafie = model pro ostatní lokality
- Destrukce domu, požárová vrstva, speciální úprava ozústatků
- Lerna IV (konec EH III) – nové keramické tvary



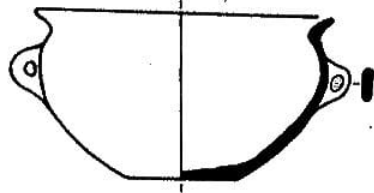
Tyrins

- Kontinuita místních keramických tvarů
- Nové prvky: Urfirnis, tzv. fajánsová keramika

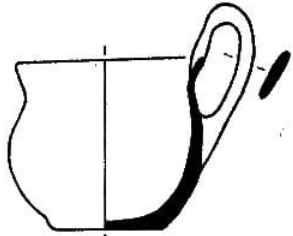




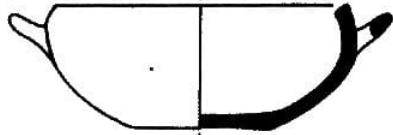
III.2



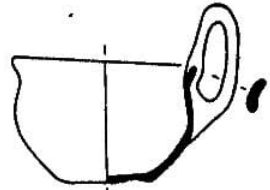
XII.1



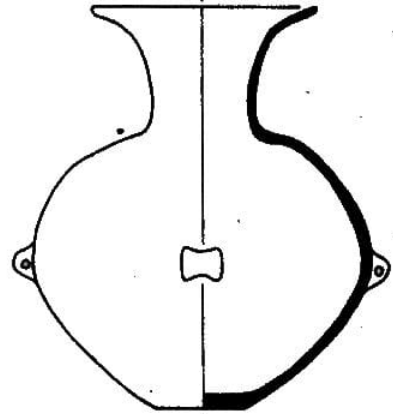
IV.1a



XIII.1



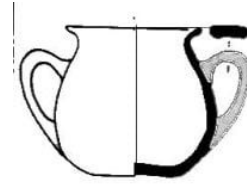
IV.1b



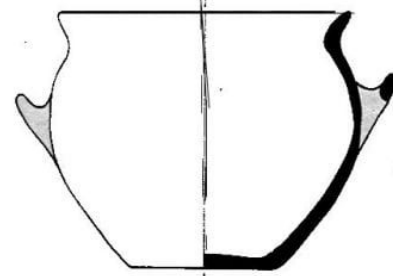
XVII.2b



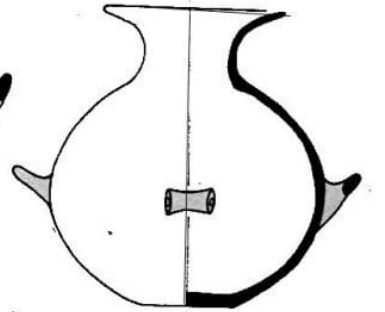
VIII.1



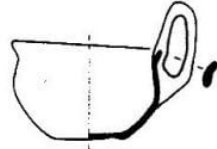
III.2



XIII.3



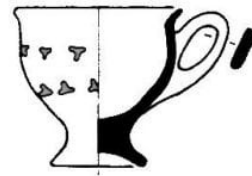
XVII.2a



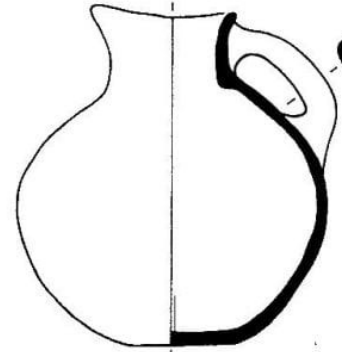
IV.1b



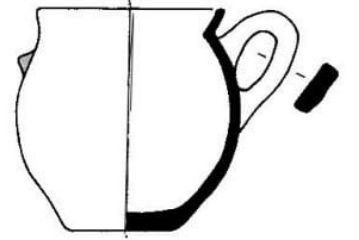
XVIII.1



VII.1



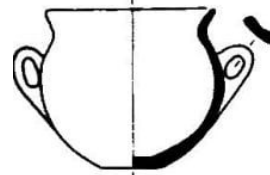
XV.2



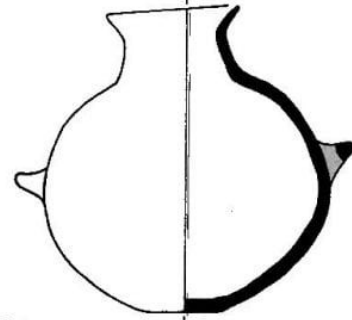
XXI.2



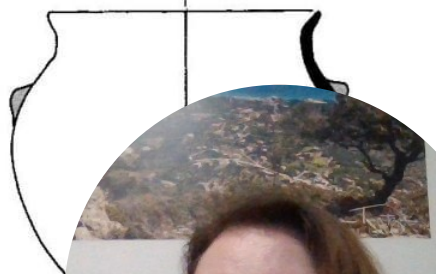
VIII.1



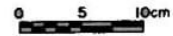
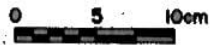
XII.2

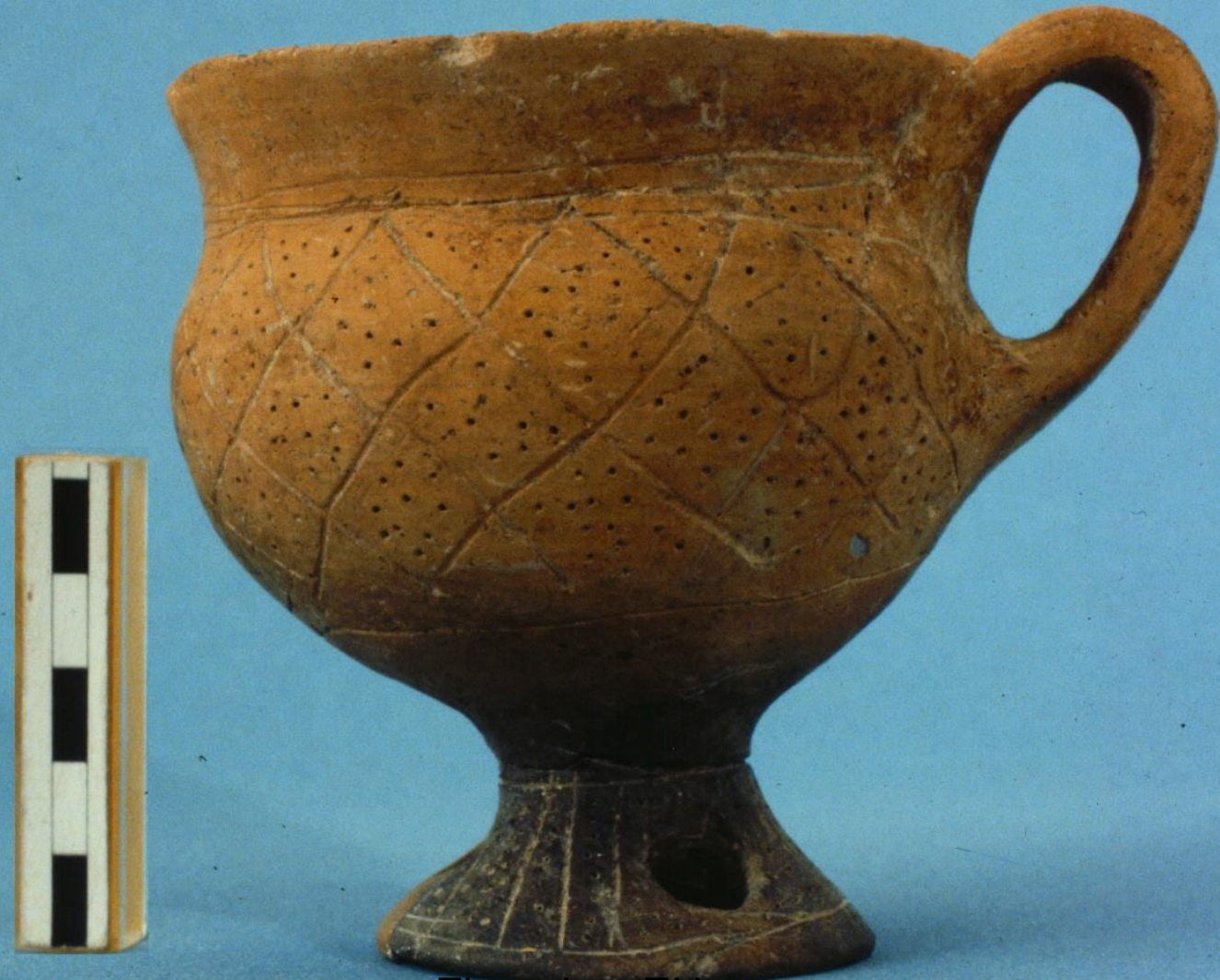


XVII.1



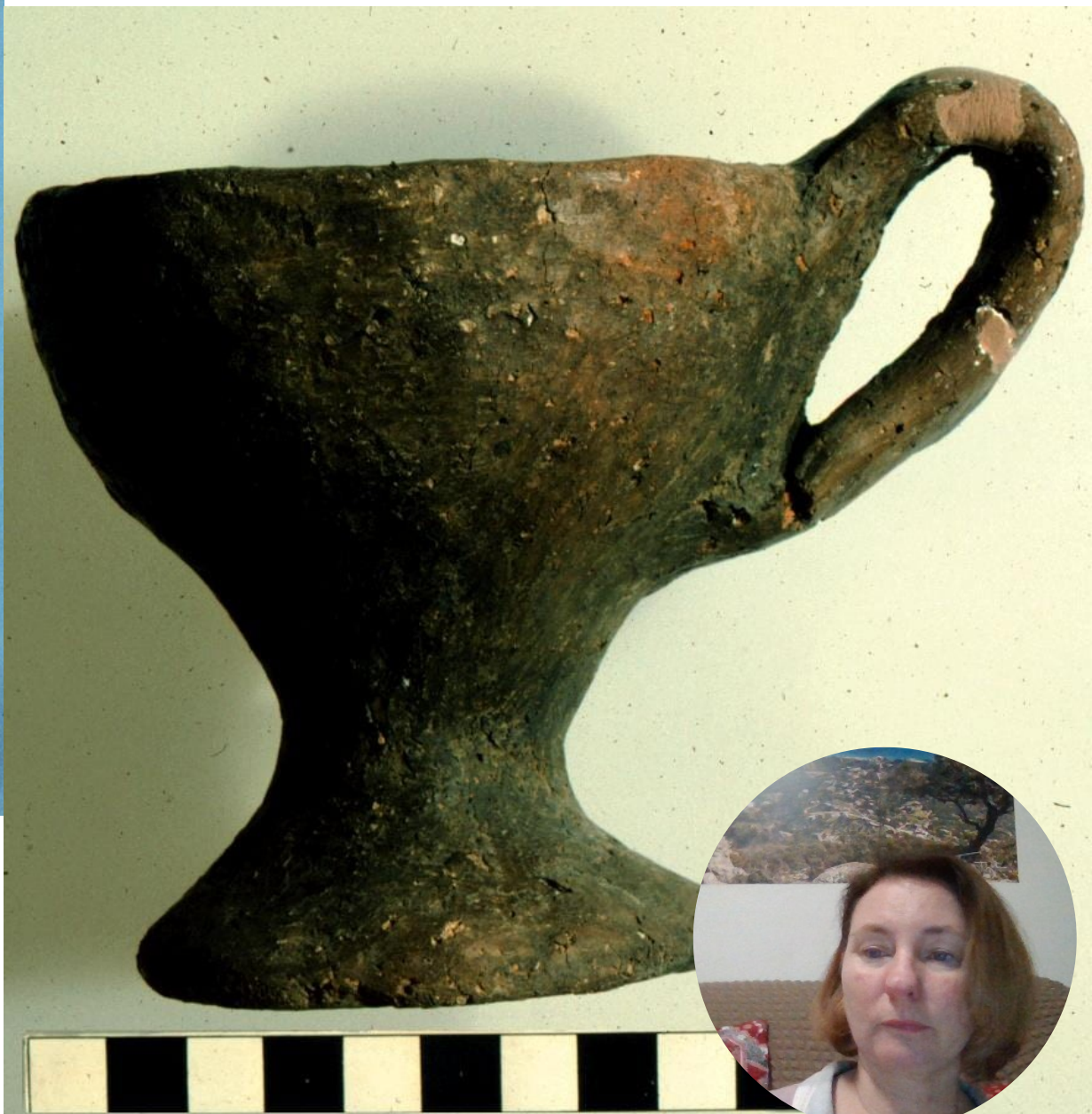
IX.1





Zigouries, EH
III

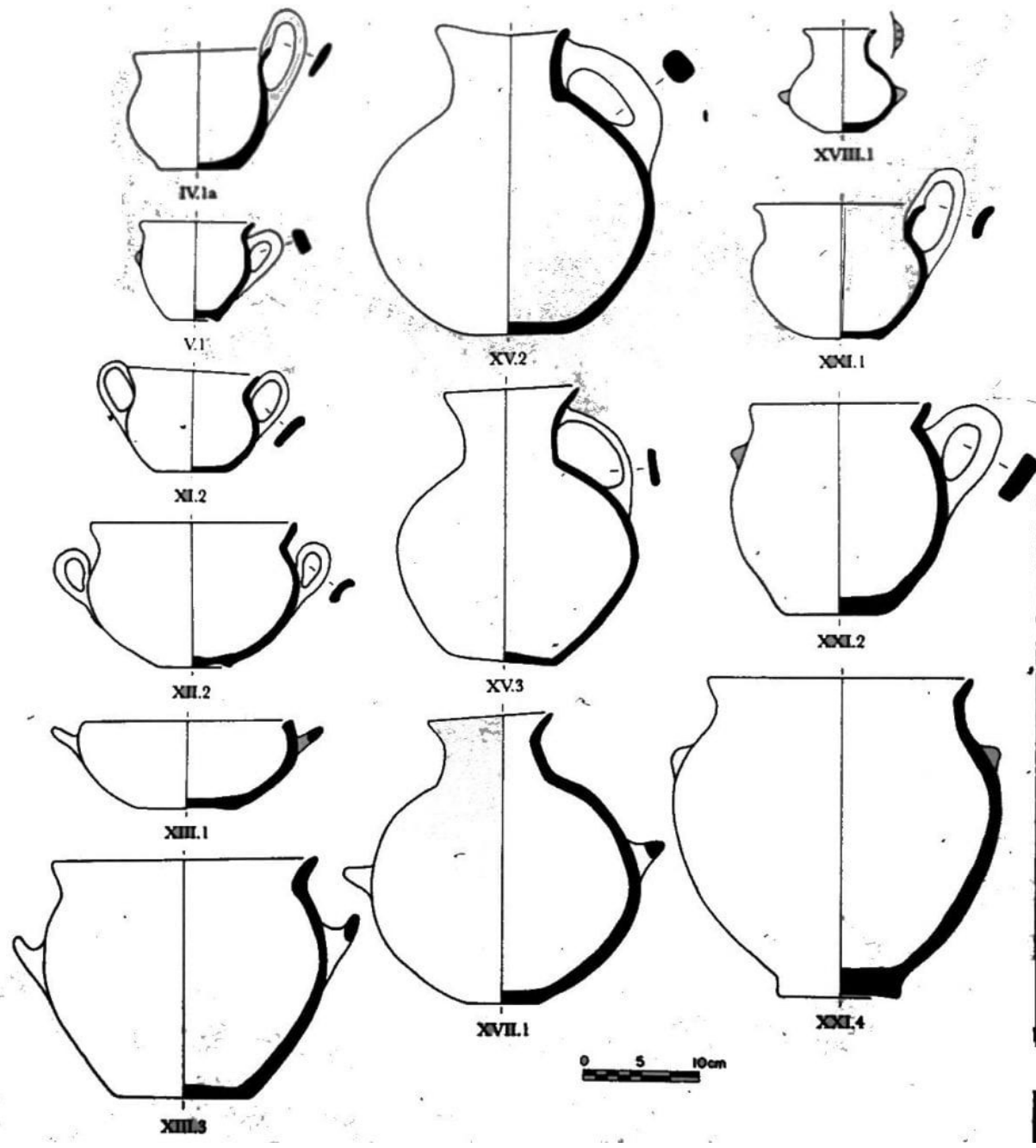
Lerna III-IV

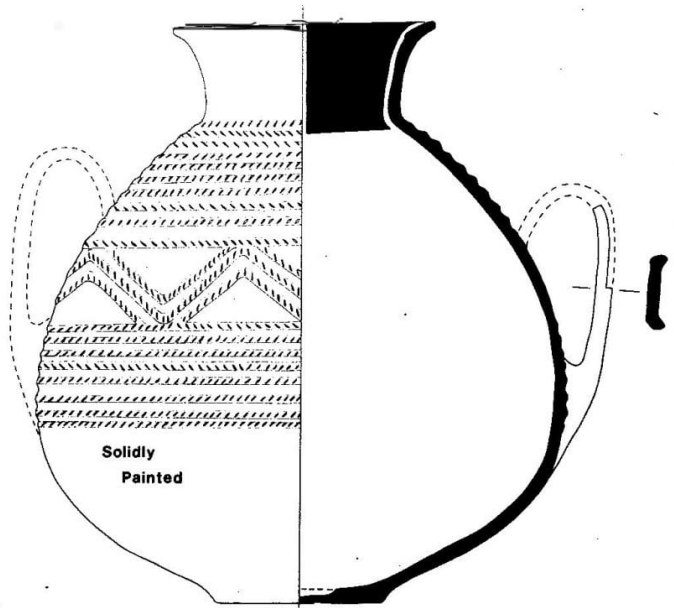




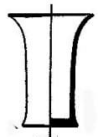
Tsougiza







421



484

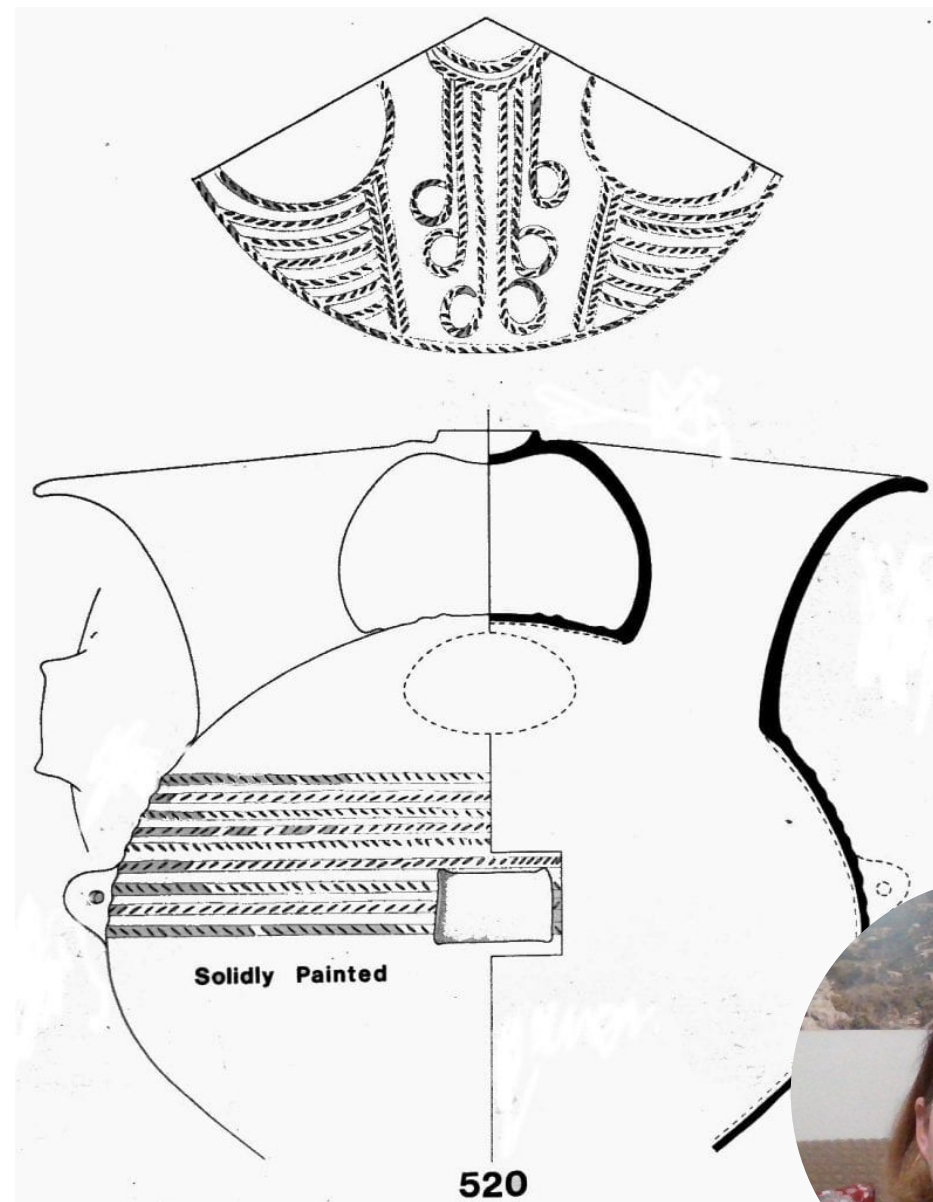
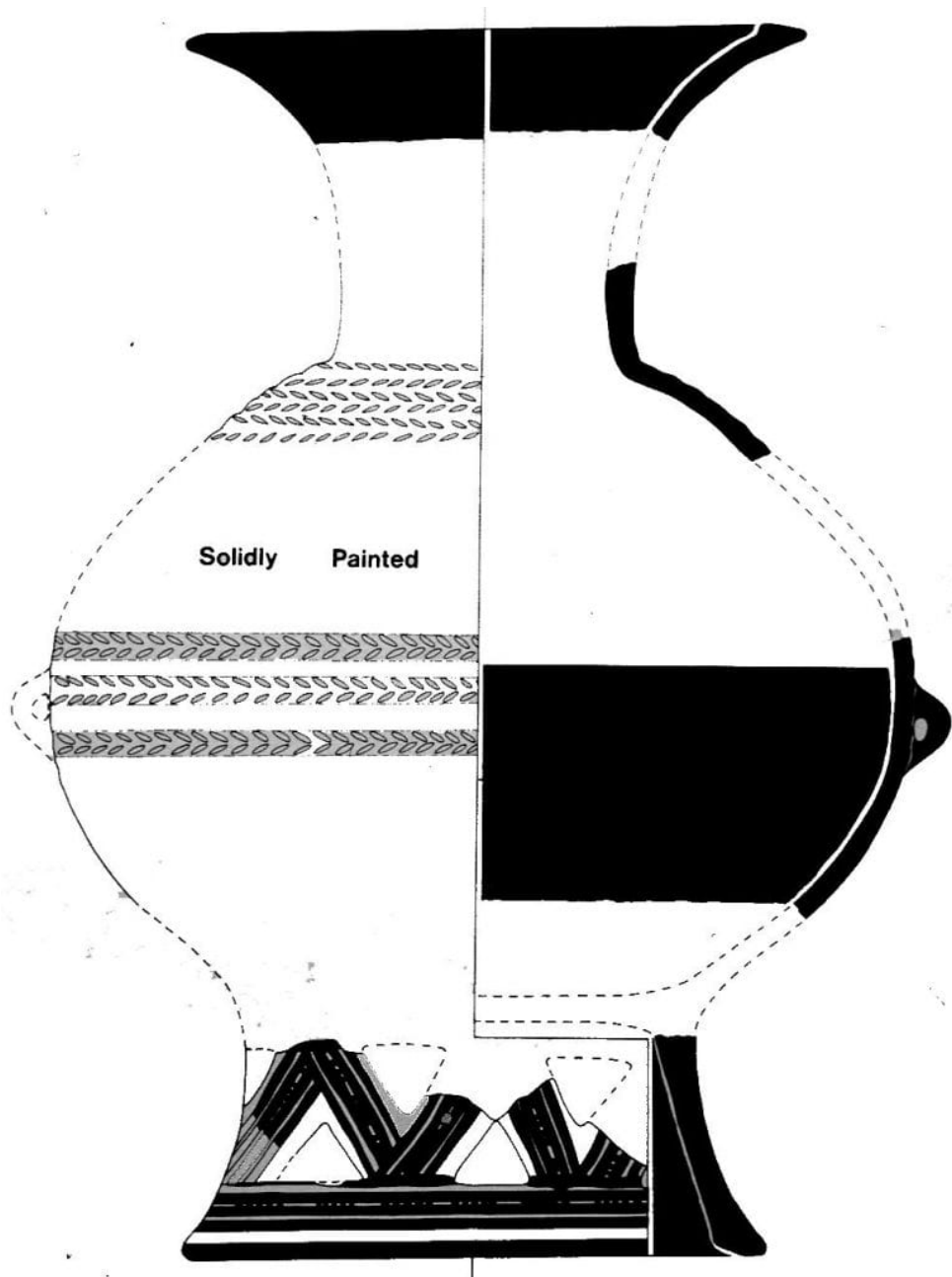


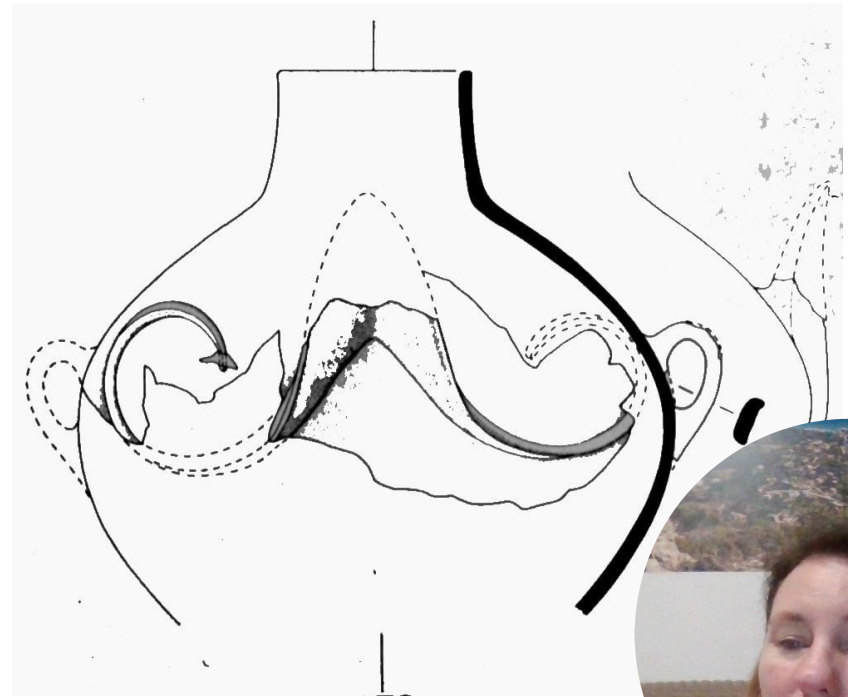
485



487



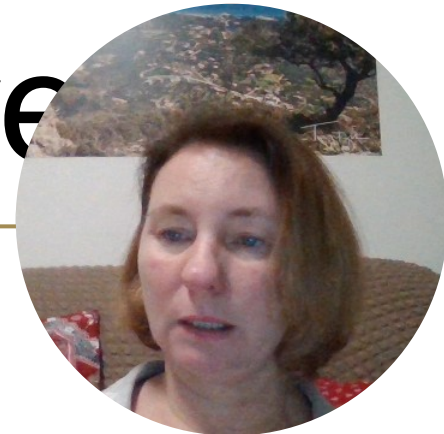






Fine grey burnished ware

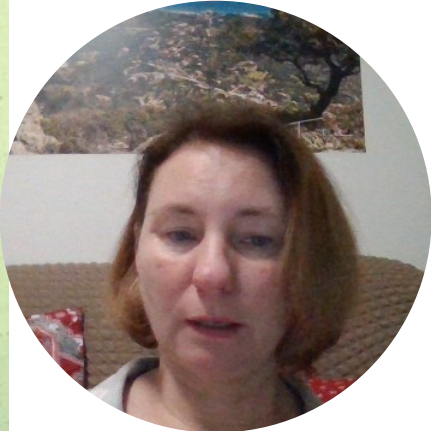
Lerna IV – 2. fáze









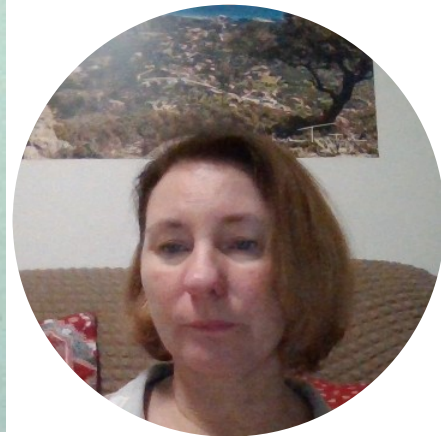




Nafplio





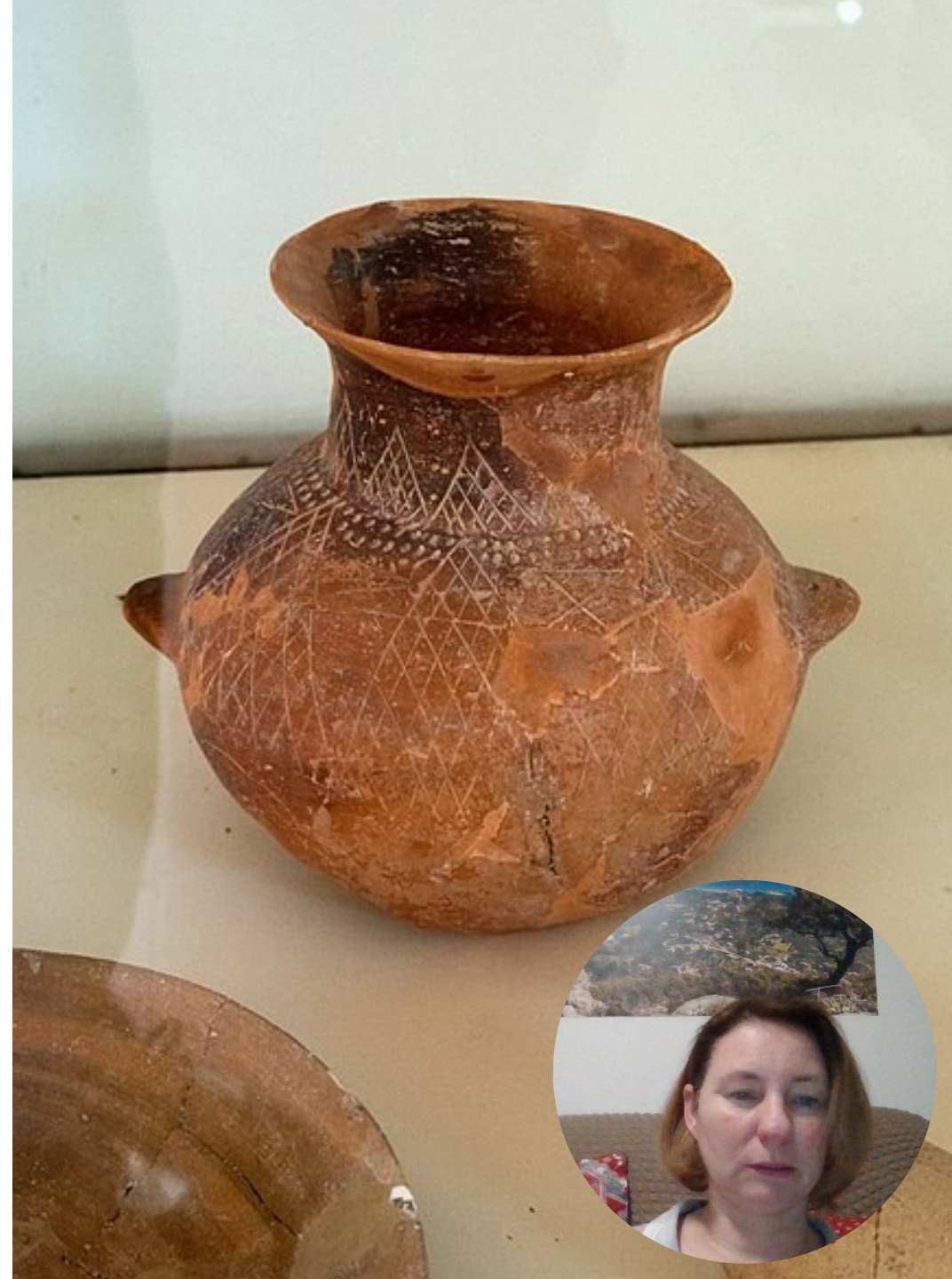






0 10





Aegina



Tyrins: „light
on dark“,
„faience
pottery“



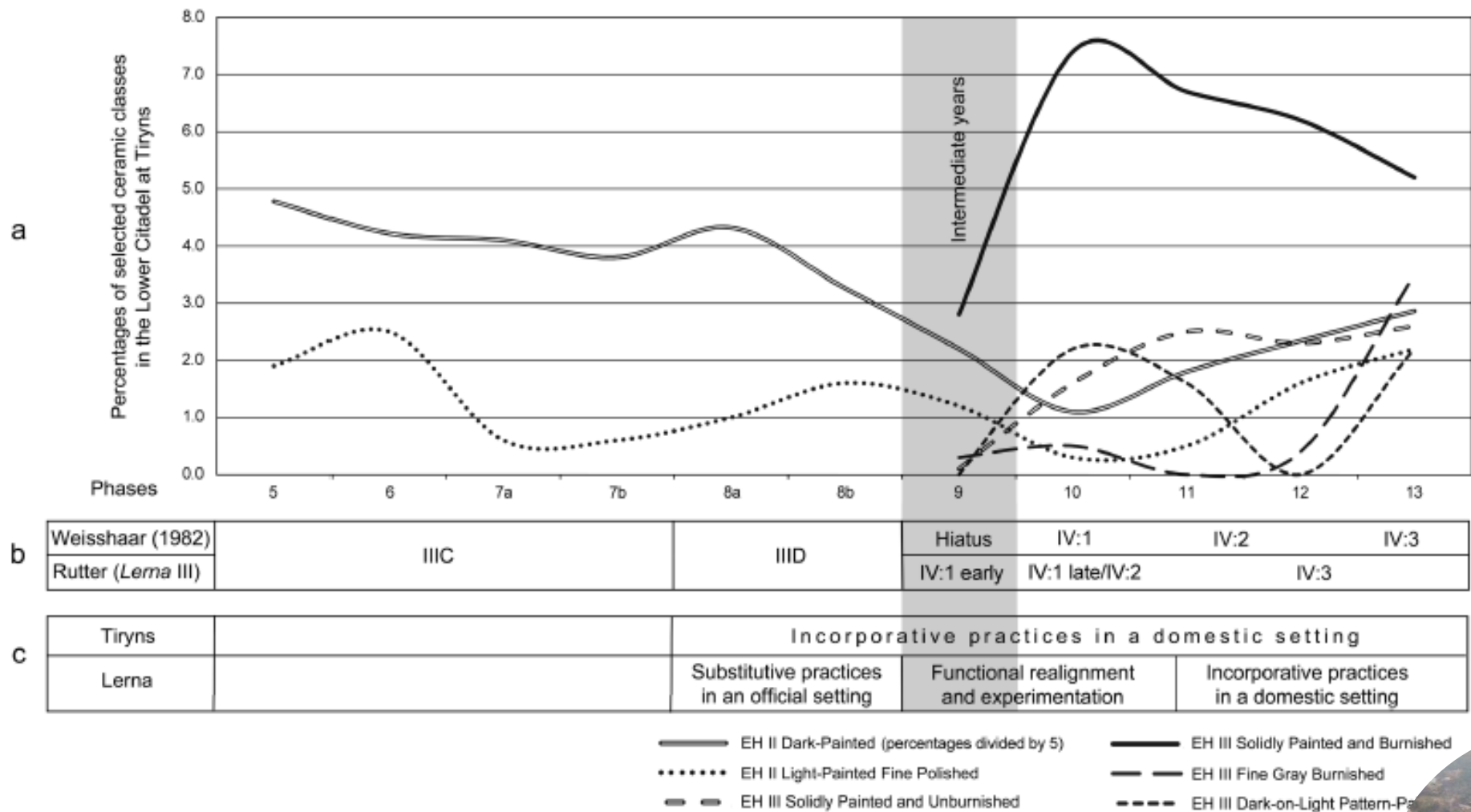
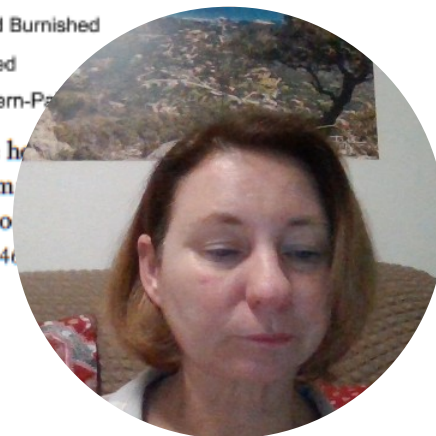


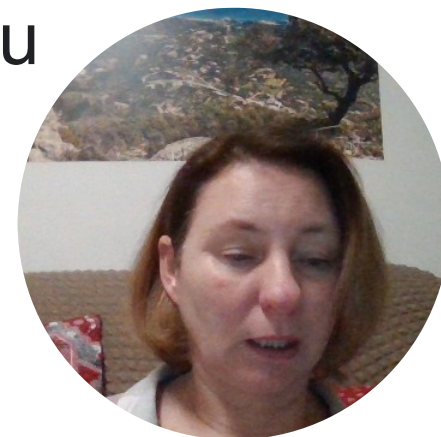
Figure 1. Overview of different interpretations of the late EH II–III ceramic records in the Lower Citadel at Tiryns and at Lerna. The time period at issue here is called the “intermediate years,” is marked in gray. (a) Percentages of selected ceramic classes during phases 5–13 in the Lower Citadel at Tiryns; (b) two common chronological interpretations of the settlement sequence at Lerna III–IV arranged to correspond to the phases of the Lower Citadel at Tiryns; (c) the proposed different synchronous social contexts and practices at the Lower Citadel in Tiryns and at Lerna. (a) After Weisshaar 1983, p. 333, fig. 1; (b) after Weisshaar 1982, pp. 40–41, fig. 78; *Lerna* III, pp. 645–647





Nové obyvatelstvo?

- Řekové?
- Expanze? Útok? Imigrace?
- Lingvistické důvody (Indoevropani)
- Archeologie
- Spíše přestrukturování společnosti v nových podmínkách vyvolaných a) klimatickou změnou (4.2-kiloyear event), b) kolapsem mocenských struktur v Egyptě, c) vyčerpáním potenciálu předstátních společností
- Nutno vidět v širším (globálním) kontextu



Shrnutí

- Klimatická změna
- Přechodné období
- Hierarchizace společnosti
- Krystalizace pozdějších urbánních center
- Krystalizace státních struktur

- Destrukce x opuštění x kontinuita
- Apsidální dům
- Nové keramické typy

