

**03 - RAGTIME****An der schönen, blauen Donau – Walzer, op. 314 (Johann Strauss, Jr., 1825-1899)**

Wiener Philharmoniker, Carlos Kleiber. Musikverein Wien, 1. 1. 1989. CD Sony 45 938, 1989.

1	intro		A	1:38
2	A	32	D	0:41
3	B	16	A	0:15
4	B	16		0:15
5	C	16	D	0:15
6	C	16		0:15
7	D	16	Bb	0:16
8	C	16	D	0:15
9	E	16	G	0:15
10	E	16		0:15
11	F	16	G	0:13
12	F	16		0:13
13	modul. 4		► F	0:04
14	G	16	F	0:19
15	G	16		0:18
16	H	16	F	0:14
17	H	16		0:14
18	modul. 10+1		► A	0:10
19	I	16	A	0:17
20	I	16		0:16
21	J	16	A	0:13
22	J	16		0:13
23	modul. 16+2		► D	0:16
24	C	16	D	0:15
25	modul. 16		► F	0:15
26	G	14	F	0:17
27	modul. 11		► D	0:10
28	A	31+1	D	0:39
29	A1	16	D	0:16
30	A2	13	D	0:12
31	stretta	11	D	0:10

**The Entertainer (Scott Joplin)**

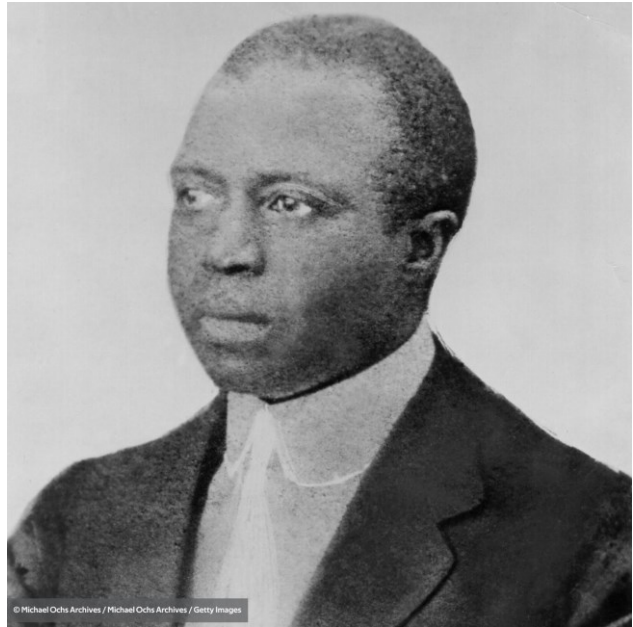
Copyright John Stark & Son, Sedalia, 29. 12. 1902.

Piano roll Classics of Ragtime 0108; LP Biograph BLP 1013 Q, 1974.

32	intro	4	C	0:06
33	A	16		0:23
34	A	16		0:23
35	B	16		0:23
36	B	16		0:23
37	A	16		0:23
38	C	16	F	0:22
39	C	16		0:22
40	modul. 4		► C	0:05
41	D	16		0:22
42	D	16		0:23



Johann Strauss, Sohn (1825 – 1899)



Scott Joplin (1867 – 1917)



Johann Strauss Orchester



pianola (player piano)



From *The Sting* (1973)  
**The Entertainer**  
(A Ragtime Two Step)

Scott Joplin

Intro. - not fast

Musical score for the first system of 'The Entertainer'. It consists of two staves (treble and bass clef) in 2/4 time. The piece begins with an introduction marked 'Intro. - not fast' and a forte (*f*) dynamic. The first system contains measures 1 through 4. The second system (measures 5-8) features a piano (*p*) dynamic in the right hand and a forte (*f*) dynamic in the left hand. The third system (measures 9-12) continues with piano (*p*) in the right hand and forte (*f*) in the left. The fourth system (measures 13-16) has piano (*p*) in the right hand and forte (*f*) in the left. The fifth system (measures 17-20) includes first and second endings, with piano (*p*) in the right hand and forte (*f*) in the left. The sixth system (measures 21-24) has piano (*p*) in the right hand and forte (*f*) in the left. The seventh system (measures 25-28) features forte (*f*) in the right hand and piano (*p*) in the left. The eighth system (measures 29-32) has forte (*f*) in the right hand and piano (*p*) in the left. The ninth system (measures 33-36) has forte (*f*) in the right hand and piano (*p*) in the left. The tenth system (measures 37-40) has piano (*p*) in the right hand and forte (*f*) in the left. The eleventh system (measures 41-44) has forte (*f*) in the right hand and piano (*p*) in the left. The twelfth system (measures 45-48) has forte (*f*) in the right hand and piano (*p*) in the left. The thirteenth system (measures 49-52) has forte (*f*) in the right hand and piano (*p*) in the left. The fourteenth system (measures 53-56) has forte (*f*) in the right hand and piano (*p*) in the left. The fifteenth system (measures 57-60) has forte (*f*) in the right hand and piano (*p*) in the left. The sixteenth system (measures 61-64) has forte (*f*) in the right hand and piano (*p*) in the left. The seventeenth system (measures 65-68) has forte (*f*) in the right hand and piano (*p*) in the left. The eighteenth system (measures 69-72) has forte (*f*) in the right hand and piano (*p*) in the left. The nineteenth system (measures 73-76) has forte (*f*) in the right hand and piano (*p*) in the left. The twentieth system (measures 77-80) has forte (*f*) in the right hand and piano (*p*) in the left. The twenty-first system (measures 81-84) has forte (*f*) in the right hand and piano (*p*) in the left. The twenty-second system (measures 85-88) has forte (*f*) in the right hand and piano (*p*) in the left. The twenty-third system (measures 89-92) has forte (*f*) in the right hand and piano (*p*) in the left. The twenty-fourth system (measures 93-96) has forte (*f*) in the right hand and piano (*p*) in the left. The twenty-fifth system (measures 97-100) has forte (*f*) in the right hand and piano (*p*) in the left.

Musical score for the second system of 'The Entertainer'. It consists of two staves (treble and bass clef) in 2/4 time. The piece begins with a 'Repeat *Sua*' instruction and a forte (*f*) dynamic. The first system (measures 21-24) has forte (*f*) in the right hand and piano (*p*) in the left. The second system (measures 25-28) has forte (*f*) in the right hand and piano (*p*) in the left. The third system (measures 29-32) has forte (*f*) in the right hand and piano (*p*) in the left. The fourth system (measures 33-36) has forte (*f*) in the right hand and piano (*p*) in the left. The fifth system (measures 37-40) has piano (*p*) in the right hand and forte (*f*) in the left. The sixth system (measures 41-44) has piano (*p*) in the right hand and forte (*f*) in the left. The seventh system (measures 45-48) has piano (*p*) in the right hand and forte (*f*) in the left. The eighth system (measures 49-52) has piano (*p*) in the right hand and forte (*f*) in the left. The ninth system (measures 53-56) has piano (*p*) in the right hand and forte (*f*) in the left. The tenth system (measures 57-60) has piano (*p*) in the right hand and forte (*f*) in the left. The eleventh system (measures 61-64) has piano (*p*) in the right hand and forte (*f*) in the left. The twelfth system (measures 65-68) has piano (*p*) in the right hand and forte (*f*) in the left. The thirteenth system (measures 69-72) has piano (*p*) in the right hand and forte (*f*) in the left. The fourteenth system (measures 73-76) has piano (*p*) in the right hand and forte (*f*) in the left. The fifteenth system (measures 77-80) has piano (*p*) in the right hand and forte (*f*) in the left. The sixteenth system (measures 81-84) has piano (*p*) in the right hand and forte (*f*) in the left. The seventeenth system (measures 85-88) has piano (*p*) in the right hand and forte (*f*) in the left. The eighteenth system (measures 89-92) has piano (*p*) in the right hand and forte (*f*) in the left. The nineteenth system (measures 93-96) has piano (*p*) in the right hand and forte (*f*) in the left. The twentieth system (measures 97-100) has piano (*p*) in the right hand and forte (*f*) in the left. The twenty-first system (measures 101-104) has piano (*p*) in the right hand and forte (*f*) in the left. The twenty-second system (measures 105-108) has piano (*p*) in the right hand and forte (*f*) in the left. The twenty-third system (measures 109-112) has piano (*p*) in the right hand and forte (*f*) in the left. The twenty-fourth system (measures 113-116) has piano (*p*) in the right hand and forte (*f*) in the left. The twenty-fifth system (measures 117-120) has piano (*p*) in the right hand and forte (*f*) in the left. The twenty-sixth system (measures 121-124) has piano (*p*) in the right hand and forte (*f*) in the left. The twenty-seventh system (measures 125-128) has piano (*p*) in the right hand and forte (*f*) in the left. The twenty-eighth system (measures 129-132) has piano (*p*) in the right hand and forte (*f*) in the left. The twenty-ninth system (measures 133-136) has piano (*p*) in the right hand and forte (*f*) in the left. The thirtieth system (measures 137-140) has piano (*p*) in the right hand and forte (*f*) in the left. The thirty-first system (measures 141-144) has piano (*p*) in the right hand and forte (*f*) in the left. The thirty-second system (measures 145-148) has piano (*p*) in the right hand and forte (*f*) in the left. The thirty-third system (measures 149-152) has piano (*p*) in the right hand and forte (*f*) in the left. The thirty-fourth system (measures 153-156) has piano (*p*) in the right hand and forte (*f*) in the left. The thirty-fifth system (measures 157-160) has piano (*p*) in the right hand and forte (*f*) in the left. The thirty-sixth system (measures 161-164) has piano (*p*) in the right hand and forte (*f*) in the left. The thirty-seventh system (measures 165-168) has piano (*p*) in the right hand and forte (*f*) in the left. The thirty-eighth system (measures 169-172) has piano (*p*) in the right hand and forte (*f*) in the left. The thirty-ninth system (measures 173-176) has piano (*p*) in the right hand and forte (*f*) in the left. The fortieth system (measures 177-180) has piano (*p*) in the right hand and forte (*f*) in the left. The forty-first system (measures 181-184) has piano (*p*) in the right hand and forte (*f*) in the left. The forty-second system (measures 185-188) has piano (*p*) in the right hand and forte (*f*) in the left. The forty-third system (measures 189-192) has piano (*p*) in the right hand and forte (*f*) in the left. The forty-fourth system (measures 193-196) has piano (*p*) in the right hand and forte (*f*) in the left. The forty-fifth system (measures 197-200) has piano (*p*) in the right hand and forte (*f*) in the left. The forty-sixth system (measures 201-204) has piano (*p*) in the right hand and forte (*f*) in the left. The forty-seventh system (measures 205-208) has piano (*p*) in the right hand and forte (*f*) in the left. The forty-eighth system (measures 209-212) has piano (*p*) in the right hand and forte (*f*) in the left. The forty-ninth system (measures 213-216) has piano (*p*) in the right hand and forte (*f*) in the left. The fiftieth system (measures 217-220) has piano (*p*) in the right hand and forte (*f*) in the left. The fifty-first system (measures 221-224) has piano (*p*) in the right hand and forte (*f*) in the left. The fifty-second system (measures 225-228) has piano (*p*) in the right hand and forte (*f*) in the left. The fifty-third system (measures 229-232) has piano (*p*) in the right hand and forte (*f*) in the left. The fifty-fourth system (measures 233-236) has piano (*p*) in the right hand and forte (*f*) in the left. The fifty-fifth system (measures 237-240) has piano (*p*) in the right hand and forte (*f*) in the left. The fifty-sixth system (measures 241-244) has piano (*p*) in the right hand and forte (*f*) in the left. The fifty-seventh system (measures 245-248) has piano (*p*) in the right hand and forte (*f*) in the left. The fifty-eighth system (measures 249-252) has piano (*p*) in the right hand and forte (*f*) in the left. The fifty-ninth system (measures 253-256) has piano (*p*) in the right hand and forte (*f*) in the left. The sixtieth system (measures 257-260) has piano (*p*) in the right hand and forte (*f*) in the left. The sixty-first system (measures 261-264) has piano (*p*) in the right hand and forte (*f*) in the left. The sixty-second system (measures 265-268) has piano (*p*) in the right hand and forte (*f*) in the left. The sixty-third system (measures 269-272) has piano (*p*) in the right hand and forte (*f*) in the left. The sixty-fourth system (measures 273-276) has piano (*p*) in the right hand and forte (*f*) in the left. The sixty-fifth system (measures 277-280) has piano (*p*) in the right hand and forte (*f*) in the left. The sixty-sixth system (measures 281-284) has piano (*p*) in the right hand and forte (*f*) in the left. The sixty-seventh system (measures 285-288) has piano (*p*) in the right hand and forte (*f*) in the left. The sixty-eighth system (measures 289-292) has piano (*p*) in the right hand and forte (*f*) in the left. The sixty-ninth system (measures 293-296) has piano (*p*) in the right hand and forte (*f*) in the left. The seventieth system (measures 297-300) has piano (*p*) in the right hand and forte (*f*) in the left. The seventy-first system (measures 301-304) has piano (*p*) in the right hand and forte (*f*) in the left. The seventy-second system (measures 305-308) has piano (*p*) in the right hand and forte (*f*) in the left. The seventy-third system (measures 309-312) has piano (*p*) in the right hand and forte (*f*) in the left. The seventy-fourth system (measures 313-316) has piano (*p*) in the right hand and forte (*f*) in the left. The seventy-fifth system (measures 317-320) has piano (*p*) in the right hand and forte (*f*) in the left. The seventy-sixth system (measures 321-324) has piano (*p*) in the right hand and forte (*f*) in the left. The seventy-seventh system (measures 325-328) has piano (*p*) in the right hand and forte (*f*) in the left. The seventy-eighth system (measures 329-332) has piano (*p*) in the right hand and forte (*f*) in the left. The seventy-ninth system (measures 333-336) has piano (*p*) in the right hand and forte (*f*) in the left. The eightieth system (measures 337-340) has piano (*p*) in the right hand and forte (*f*) in the left. The eighty-first system (measures 341-344) has piano (*p*) in the right hand and forte (*f*) in the left. The eighty-second system (measures 345-348) has piano (*p*) in the right hand and forte (*f*) in the left. The eighty-third system (measures 349-352) has piano (*p*) in the right hand and forte (*f*) in the left. The eighty-fourth system (measures 353-356) has piano (*p*) in the right hand and forte (*f*) in the left. The eighty-fifth system (measures 357-360) has piano (*p*) in the right hand and forte (*f*) in the left. The eighty-sixth system (measures 361-364) has piano (*p*) in the right hand and forte (*f*) in the left. The eighty-seventh system (measures 365-368) has piano (*p*) in the right hand and forte (*f*) in the left. The eighty-eighth system (measures 369-372) has piano (*p*) in the right hand and forte (*f*) in the left. The eighty-ninth system (measures 373-376) has piano (*p*) in the right hand and forte (*f*) in the left. The ninetieth system (measures 377-380) has piano (*p*) in the right hand and forte (*f*) in the left. The ninety-first system (measures 381-384) has piano (*p*) in the right hand and forte (*f*) in the left. The ninety-second system (measures 385-388) has piano (*p*) in the right hand and forte (*f*) in the left. The ninety-third system (measures 389-392) has piano (*p*) in the right hand and forte (*f*) in the left. The ninety-fourth system (measures 393-396) has piano (*p*) in the right hand and forte (*f*) in the left. The ninety-fifth system (measures 397-400) has piano (*p*) in the right hand and forte (*f*) in the left. The ninety-sixth system (measures 401-404) has piano (*p*) in the right hand and forte (*f*) in the left. The ninety-seventh system (measures 405-408) has piano (*p*) in the right hand and forte (*f*) in the left. The ninety-eighth system (measures 409-412) has piano (*p*) in the right hand and forte (*f*) in the left. The ninety-ninth system (measures 413-416) has piano (*p*) in the right hand and forte (*f*) in the left. The hundredth system (measures 417-420) has piano (*p*) in the right hand and forte (*f*) in the left.

*Pár zajímavých odkazů ke shlédnutí a sslechnutí:*

<https://www.youtube.com/watch?v=il65hA2ghjA>

**1928 Themola London Pianola - The Blue Danube**

Roll: QRS XP-436-C / Played by: Arden & Kortlander

<https://www.youtube.com/watch?v=4iymj0gZpj4>

**RagTime Scott Joplin Pianola Autoleon Triumph Auto London 1924**

<https://www.youtube.com/watch?v=jRcFGdeFDmg>

**Radek Janoušek - pianola**

<https://www.svetklaviru.cz/klavir/aeolian-pianola>

**Aeolian Pianola | Svět klavírů**

<https://ostrava.rozhlas.cz/pianola-jediny-klavir-ze-ktereho-neboli-ruce-ale-nohy-6953990>

**Pianola. Jediný klavír, ze kterého nebolí ruce, ale nohy**

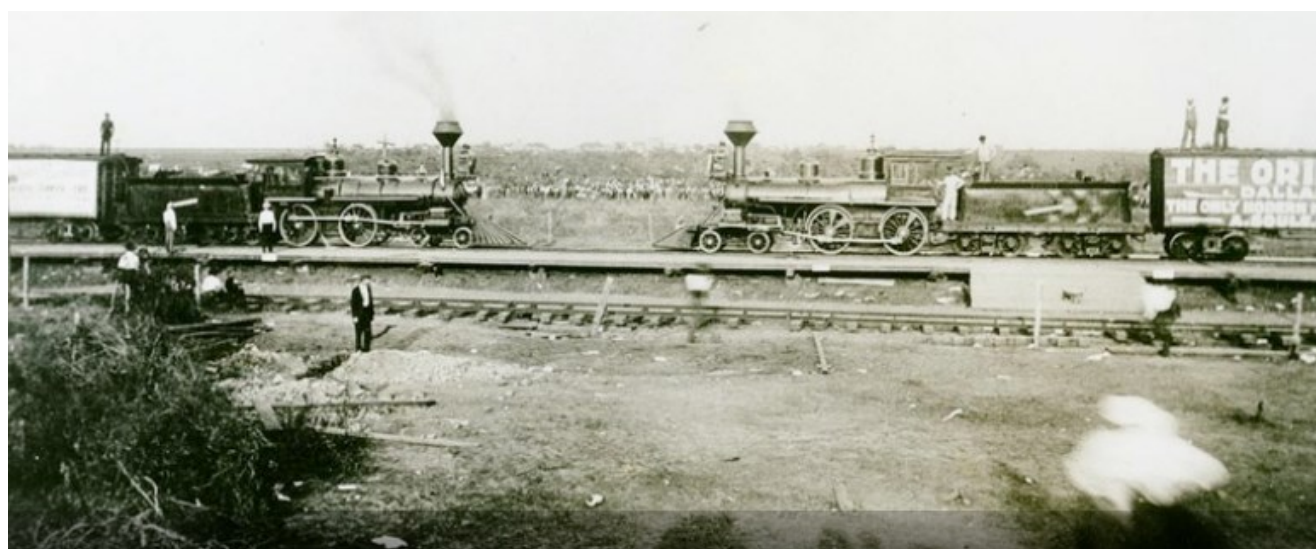
S varhanářem a sběratelem Zdeňkem Hromádkou z Frýdku-Místku hovořila Romana Kubicová.

**43 The Crush Collision March** (*Scott Joplin, 1867/68-1917*)

4:09

Copyright J. R. Fuller, Temple, TX, 15. 10. 1896.

Piano roll Classics of Ragtime 0114; LP Biograph BLP 1013 Q, 1974.



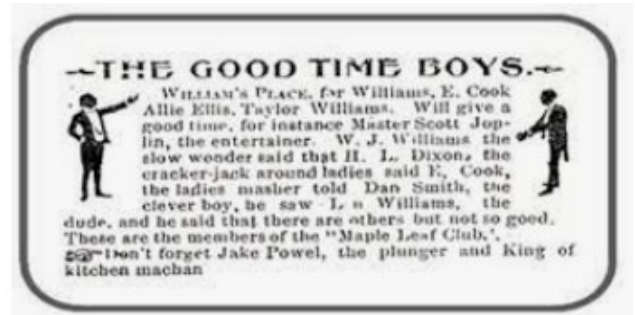
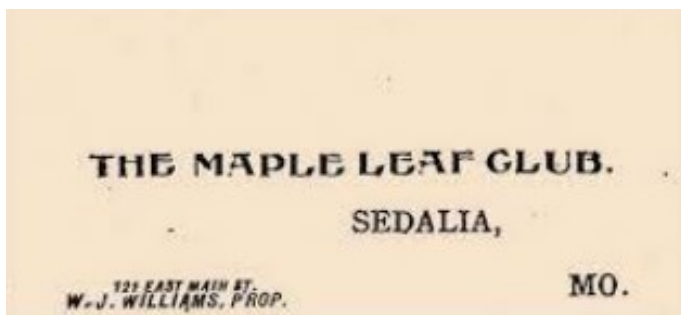


44 **Maple Leaf Rag** (Scott Joplin)  
 played by **Scott Joplin**, April, 1916  
 Copyright John Stark, 18. 9. 1899.  
 Piano roll ConnORIZED 10265; LP Biograph BLP 1006 Q, 1971.

3:14



Site of the Maple Leaf Club and Marker in Sedalia, Missouri

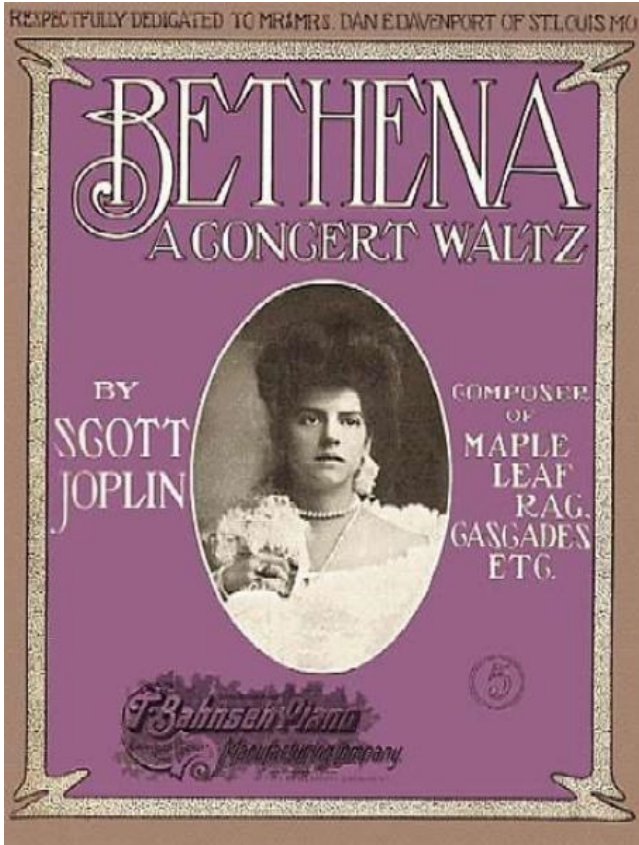




First edition cover of the "Maple Leaf Rag" (1899), published by John Stark & Son

45 **Bethena – A Concert Waltz** (*Scott Joplin*) 4:30  
 Copyright Bahnsen, 6. 3. 1905.  
 Piano roll Classics of Ragtime 0062; LP Biograph BLP 1013 Q, 1974.

46 **Stoptime Rag** (*Scott Joplin*) 2:58  
 Copyright Stern, 1910.  
 Piano roll QRS 30786; LP Biograph BLP 1008 Q, 1971.



**“BETHENA”**  
 A CONCERT WALTZ

By **SCOTT JOPLIN**,  
 Composer of “Maple Leaf Rag”

*Valse Tempo.*

*Tema.*  
*mp* *rit.* *poco a poco*

*Valse cantabile.*  
*mp*  
*a tempo.*

Bethena. Public Domain 1/6

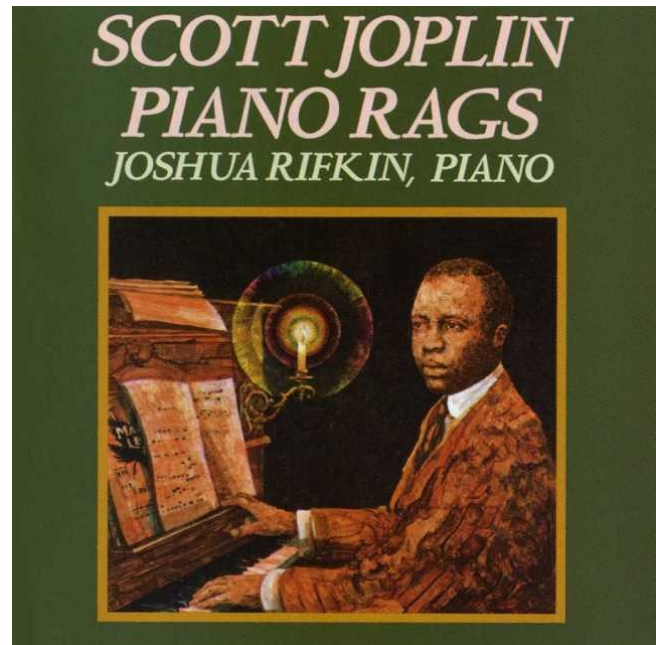
**The Entertainer** (*Scott Joplin*) played by:

- 47 **Joshua Rifkin**-solo piano  
New York, 1970.  
LP Nonesuch H-71248, 1970

4:59



Joshua Rifkin (\*1944)



1970

- 48 **Myron Romanul**-solo piano 3:48  
49 **The New England Conservatory Ragtime Ensemble**: Charles Lewis-tp; Ray Cutler-tb; Gary Ofenloch-tu; David Reskin-fl, picc; Victor Sawa-cl; Myron Romanul-p; Michael Singer-b; Mark Belair-dr; Juan Ramirez-Hernandez, Tibor Pusztai-vio; Juan Dandridge-vla; Bruce Coppock-vcl; D. S. De Lisle-arr; Gunther Schuller-cond. 4:16  
Jordan Hall, New England Conservatory, Boston, Massachusetts, February 12-13, 1973.  
LP Angel S 36060, 1973; Supraphon 1115 2935, 1981.



Myron Romanul (\*1954)



New England Conservatory Ragtime Ensemble (ca. 1973)



**50** „*Rahsaan*“ *Roland Kirk*

6:12

**51** Done in the style of the Blues (dtto)

5:58

Rahsaan Roland Kirk-ts, bass sax, fl, tp, manzello, arr (50); Pat Patrick-bs; Arthur Jenkins, Hilton Ruiz, Richard Tee-kb; Cornell Dupree, Hugh McCracken, Keith Loving-g; Francisco Centeno, Metathias Pearson, Bill Salter-b; John Goldsmith, Sonny Brown, Steven Gadd-dr; Lawrence Killian, Ralph MacDonald-congas, perc; Tom Clack-sound effects; William Eaton-arr (51).

New York, May 14, 1975.

LP Atlantic SD 1674, 1975.



Rahsaan Roland Kirk (1935 – 1977)



Marcus Roberts (1963)

**52** *Marcus Roberts*-piano

3:40

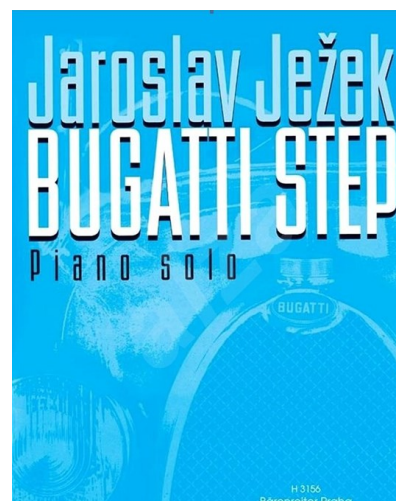
Main Street Music, Tallahassee, Florida, January 31 – February 5, 1998.  
CD Sony Classical SK 60554, 1998.

**53** *Bugatti step* (*Jaroslav Ježek, 1906-1942*)

2:37

Harry von Noe-klavír, Ježkův orchestr Osvobozeného divadla, řídí Jaroslav Ježek.  
Praha, prosinec 1930.

standardní deska Ultraphon A-10166/matr. číslo 15767; CD Ultraphon 11 2550-2 801, 1994.



**Treemonisha** – Opera (*words & music by Scott Joplin*)

54 Overture [*fade out*]

4:15

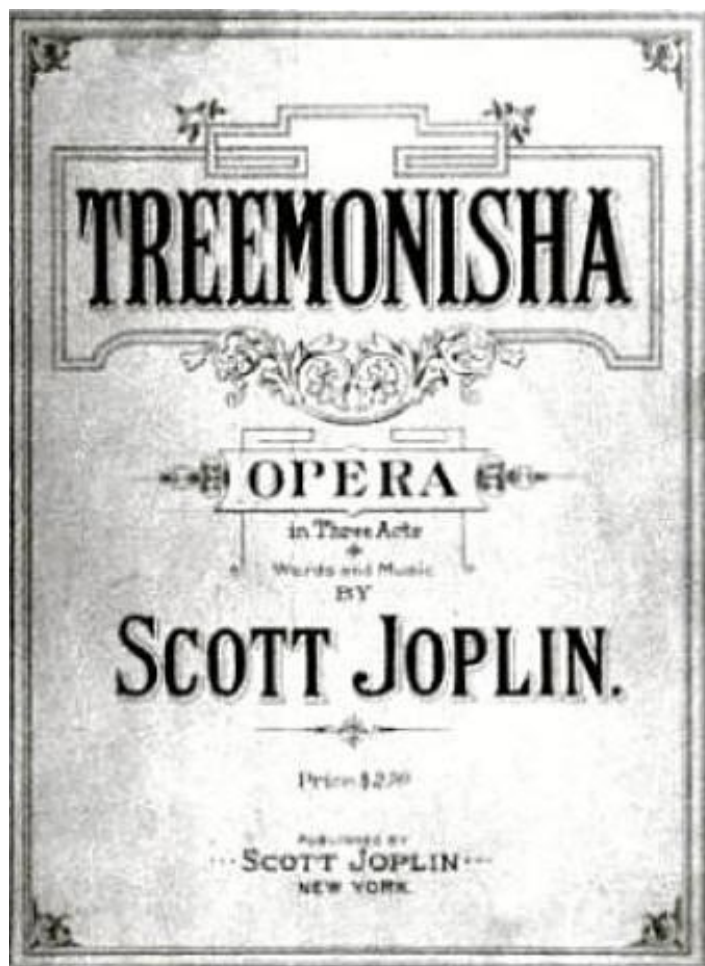
55 The Bag of Luck

6:33

Carmen Balthrop-Treemonisha, Betty Allen-Monisha, Curtis Rayam-Curtis, WillardWhite-Ned, Ben Harney-Zodzetrick; orchestra & chorus, Gunther Schuller-Arranger, Orchestrator, Music Supervisor & Conductor.

New York, October, 1975.

CD Deutsche Grammophon 435 709-2, 1976.



Gunther Schuller (1925 – 2015)



ORIGINAL CAST RECORDING

Adela Holzer, James Nederlander and Victor Lurie  
 present  
 The Houston Grand Opera Production  
 of  
**Scott Joplin's  
 TREEMONISHA**  
 Arrangements, Orchestration and Music Supervision by  
**GUNTHER SCHULLER**  
 Conducting the Original Cast Orchestra and Chorus

starring  
**CARMEN BALTHROP** **BETTY ALLEN** **CURTIS RAYAM**  
 Treemonisha Monisha Remus

also starring  
**WILLARD WHITE**  
 Ned

with  
**Ben Harney** **Cora Johnson** **Kenneth Hicks**  
 Zdzetrick Lucy Andy

**Dorceal Duckens** **Dwight Ransom** **Raymond Bazemore**  
 Luddad Cephus Simon

and  
**Edward Pierson**  
 Parson Altalk

Music Director **Chris Nance** Sets and Costumes **Franco Colavecchia** Lighting **Nananne Porcher**  
 Artistic Consultant **Vera Brodsky Lawrence** Assistant Director **David Drisin**

Choreographed by  
**Louis Johnson**  
 Production Conceived and Directed by  
**Frank Corsaro**

presented by Arrangement with the Dramatic Publishing Company,  
 Chicago and Westport

Producer  
**THOMAS MOWREY**  
 Sound Engineers  
**PETER BURKOWITZ** **GERNOT WESTHAUSER**  
 Recording Engineers  
**BARNEY KEVILLE** **MIKE HARTRY**

**2 LP - STEREO 2787 083**  
 Printed in Germany by Schwanen & Schanz KG, Berlin



TREMONISHA Scott Joplin

orchestration by Gunther Schuller

I. - Overture

Allegretto (♩ = 92)

2/4

Flute (Picc.) - Picc. p

Oboe - p

2 Clar. in B♭ - p

Bsn. - p

2 Hrn. - p

2 Trpts (E♭) - p

Trb. - p

Tuba - p

Pno - p

Drums - *zessero*

1. Vln. - p

2. Vln. - p

Va. - p

Vc. - p

Cb. - p

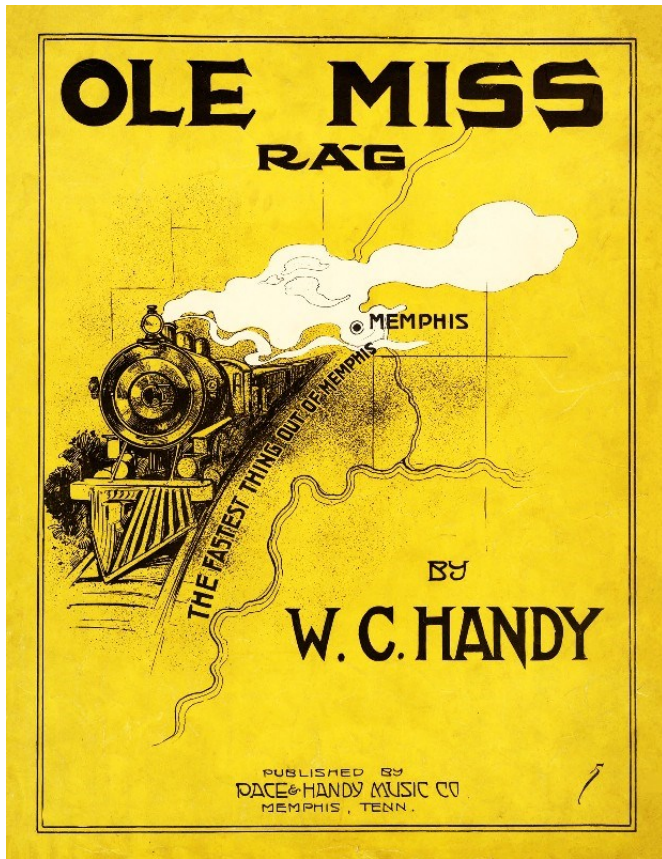
56 **Ole Miss Rag** (*William Christopher Handy, 1873-1958*)

3:01

*played by Scott Joplin, June, 1916*

Copyright Pace & Handy Music Co., Memphis, 1916.

Piano roll Connorized 10304; LP Biograph BLP 1006 Q, 1971.



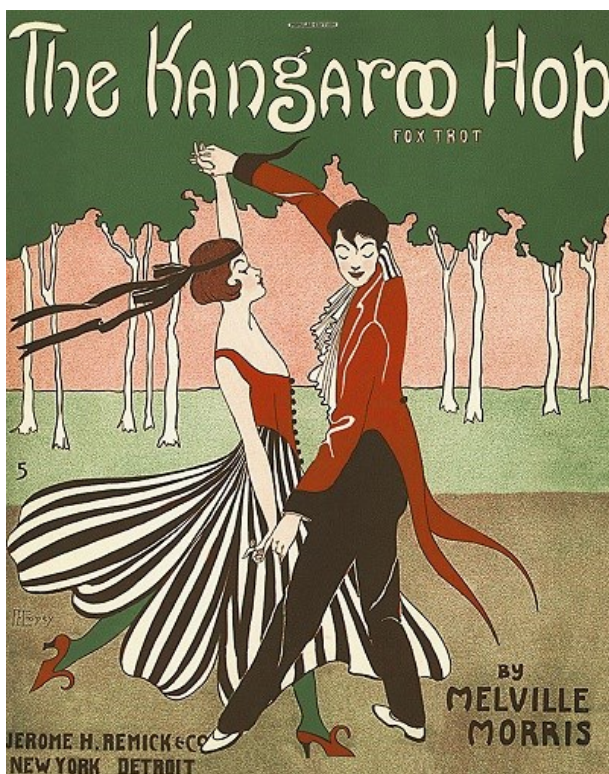
William Christopher Handy (1873 – 1958)

57 **Kangaroo Hop** – Fox-trot (*Melville Morris, 1888-1987!!!*)

1:54

*played by George Gershwin, January, 1916*

Piano roll Perfection 86595; CD Nonesuch 7559-79287-2, 1993.





**Melville Morris**  
(October 5, 1888 to February 10, 1987)

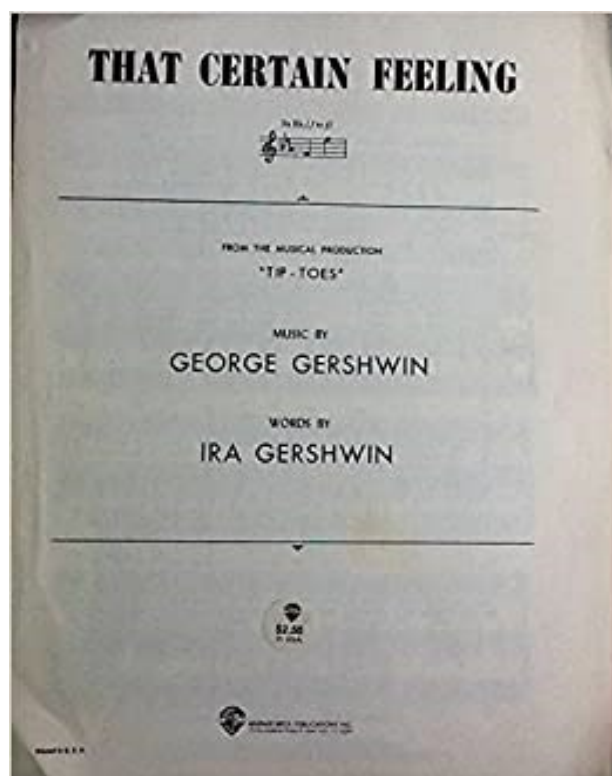
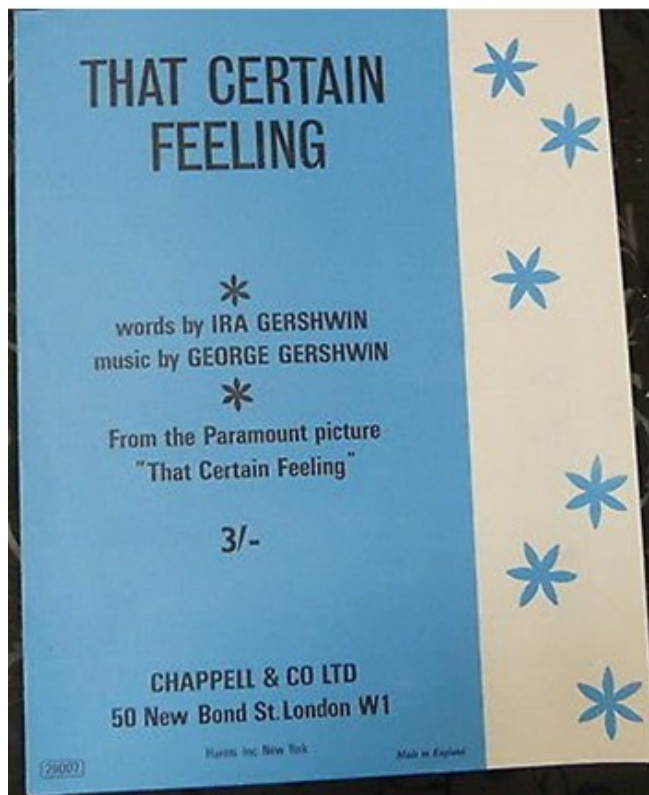
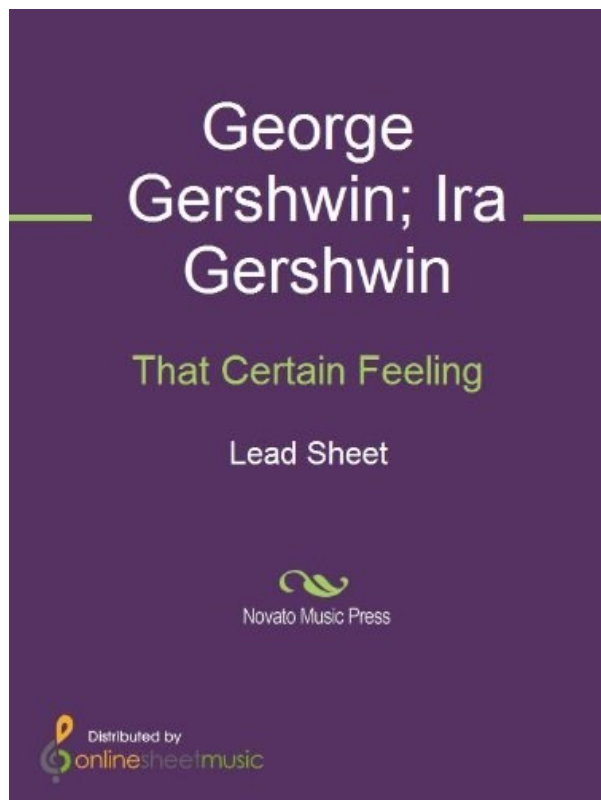
Compositions	
1911 That Ragtime Regimental Band [1]	1922 <a href="#">The Big Fun Show: Revue</a>
1914 Kewpie Doll [2]	<a href="#">Folly Town: Revue</a>
1915 On the Bay of Old Bombay Kangaroo Hop	<a href="#">Maids of America: Revue</a>
1916 Kangaroo Hop (Song) [3] Tiddle-De-Winks	1923 <a href="#">Americans Abroad: Revue</a>
1917 Cute and Pretty: Fox Trot Who's Who	<a href="#">The Peek Inn Revue</a>
1919 Down Around the River at the Dixie Jubilee [4]	<a href="#">Pepper Box: Revue</a>
	<a href="#">Bubble, Bubble: Revue</a>
	1924 <a href="#">Peek-A-Boo: Revue</a>
	1. w/A. Seymour Brown
	2. w/Edward Madden & Albert Gumble
	3. w/Gus Kahn
	4. w/Jack Yellen
Selected Rollography	
1913 Mammy Jinny's Jubilee	Matrix
Somebody Loves You	[Rythmodik ?]
Ragtime Regimental Band	[Rythmodik ?]

**58** **That Certain Feeling** (*George Gershwin, 1898-1937*)

2:43

*played by George Gershwin, April, 1926*

Piano roll Duo-Art 713216; CD Nonesuch 7559-79287-2, 1993.



Zde vzorná vydání Gershwinem nahraných klavírních válců se všemi detaily:  
<https://www.discogs.com/release/9394032-Gershwin-Plays-Gershwin-The-Piano-Rolls>



<https://www.discogs.com/release/5388587-George-Gershwin-The-Piano-Rolls-Vol-Two>



Znovu od začátku, odkazy k některým dalším nahrávkám

**An der schönen, blauen Donau – Walzer, op. 314 (Johann Strauss, Jr., 1825-1899)**

"The Blue Danube" is the common English title of "An der schönen blauen Donau", Op. 314, a waltz composed in 1866. Originally performed in February, 1867 at a concert of the "Wiener Männergesangsverein" it has been one of the most consistently popular pieces of music in the classical repertoire.

4th in 1898 – 57 versions

<https://secondhandsongs.com/performance/760368>

**Columbia Orchestra 1896**

Cylinder

2:27

Release date - 1898 (estimated)

Label - Columbia Phonograph Company

Catalog number – 15162

<https://secondhandsongs.com/performance/528051>

**Philadelphia Symphony Orchestra conducted by Leopold Stokowski**

4:22

Shellac disc 78 rpm

Release date - 1927

Label - His Master's Voice

Catalog number - D 1218



**Philharmonia Orchestra - Herbert von Karajan (commercially released recording)**

LP disc (long play) 33 1/3 rpm

Release date - 1958

Label - Angel

Catalog number - 35342



	<i>část</i>	<i>počet taktů</i>	<i>tónina</i>	<i>začíná časem</i>
1	intro	mnoho	A	0:04
2	A	32	D	1:42
3	B*	16	A	2:23
4	C*	16	D	2:39
5	D	16	Bb	2:54
6	C	16	D	3:11
7	E	16	G	3:26
8	E	16		3:42
9	F	16	G	3:58
10	F	16		4:12
11	modul.	4	► F	4:28
12	G	16	F	4:33
13	G	16		4:59
14	H	16	F	5:24
15	H	16		5:40
16	modul.	10+1	► A	5:55
17	I	16	A	6:06
18	I	16		6:24
19	J	16	A	6:41
20	J	16		6:56
21	modul.	16+2	► D	7:11
22	C	16	D	7:28
23	modul.	16	► F	7:44
24	G	14	F	8:02
25	modul.	11	► D	8:24
26	A	31+1	D	8:36
27	A1	16	D	9:18
28	A2	13	D	9:40
29	stretta	11	D	9:57
	applause			10:10
	Fine			10:33

**The Entertainer** (*Scott Joplin*) 5th in 1902 – 191 versions

Copyright John Stark &amp; Son, Sedalia, 29. 12. 1902.

Piano roll Classics of Ragtime 0108; LP Biograph BLP 1013 Q (released 1974)

	<i>část</i>	<i>počet taktů</i>	<i>tónina</i>	<i>začíná časem</i>
1	intro	4	C	0:00
2	A	16		0:06
3	A	16		0:29
4	B	16		0:52
5	B	16		1:16
6	A	16		1:39
7	C	16	F	2:02
8	C	16		2:25
9	modul.	4	► C	2:47
10	D	16		2:53
11	D	16		3:15
	Fine ( <i>fade-out</i> )			3:35

**The Entertainer by Mutt Carey and His New Yorkers**

Mutt Carey [trumpet], Edmund Hall [clarinet], James Archey [trombone], Cliff Jackson [piano],  
Pops Foster [bass], Danny Barker [guitar], Baby Dodds [drums]

Recorded November 27, 1947

Release date - February 1948

Label - Century

Catalog number – 4007



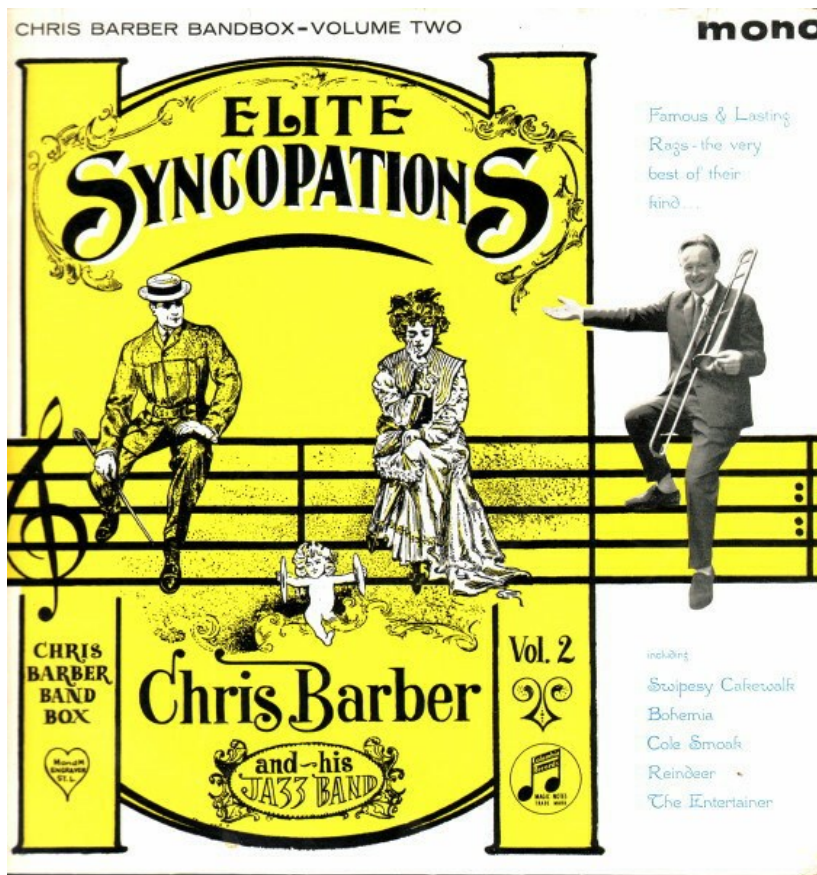
**Thomas „Mutt“ Carey**  
Born September 17, 1888  
Died September 3, 1948

# The Entertainer by Chris Barber's Jazzband

Pat Halcox (tp,vcl) Chris Barber (tb) Monty Sunshine (cl) Eddie Smith (bj) Dick Smith (b,g) Graham Burbidge (d)

London, January 25, 1960

Columbia (E) 33SX 1245





**Chris Barber** (April 17, 1930 – March 2, 2021)

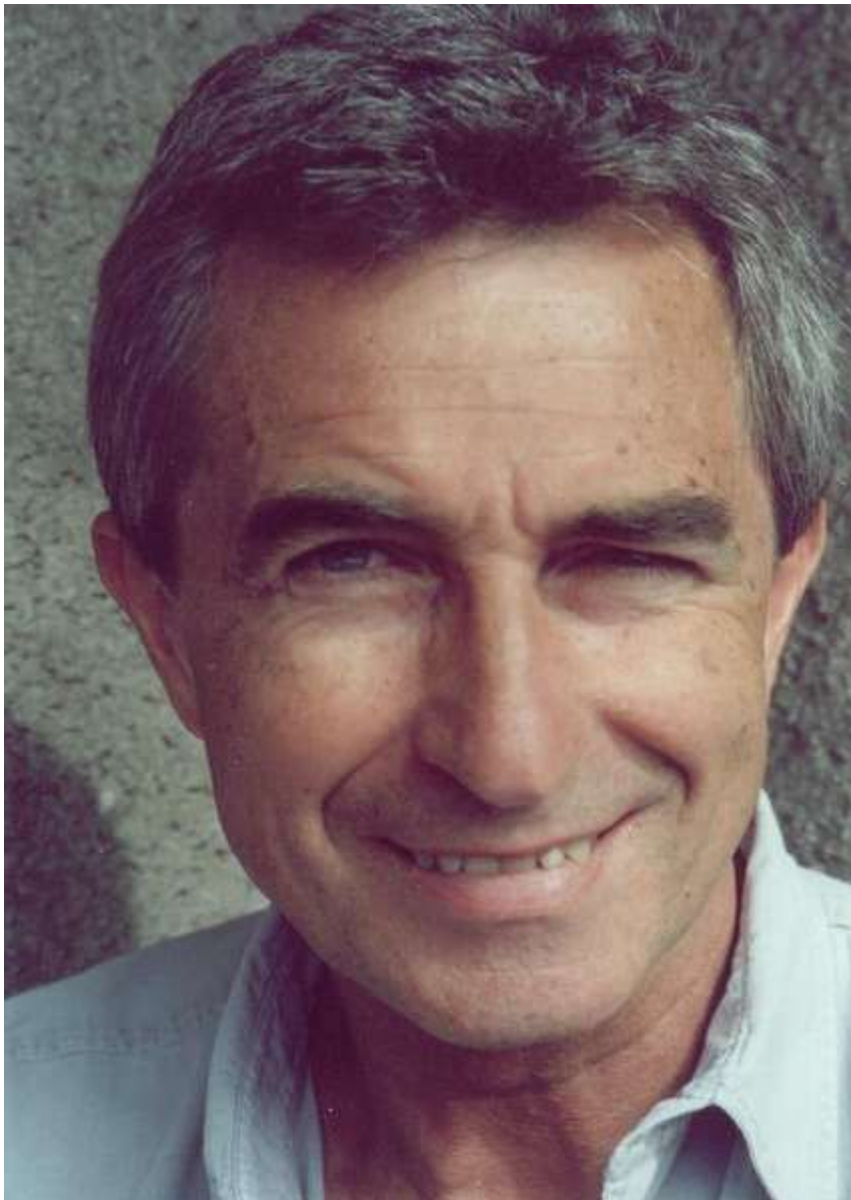
<https://www.youtube.com/watch?v=6pPP-FPJ7Ro>

**Jak to chodí** written by Zdeněk Borovec Czech

Jiří Štědroň (1976) SP Supraphon 1 43 1971

Orchestr Čs. televize, Václav Zahradník





**Jiří Štědroň** (\* May 23, 1942)

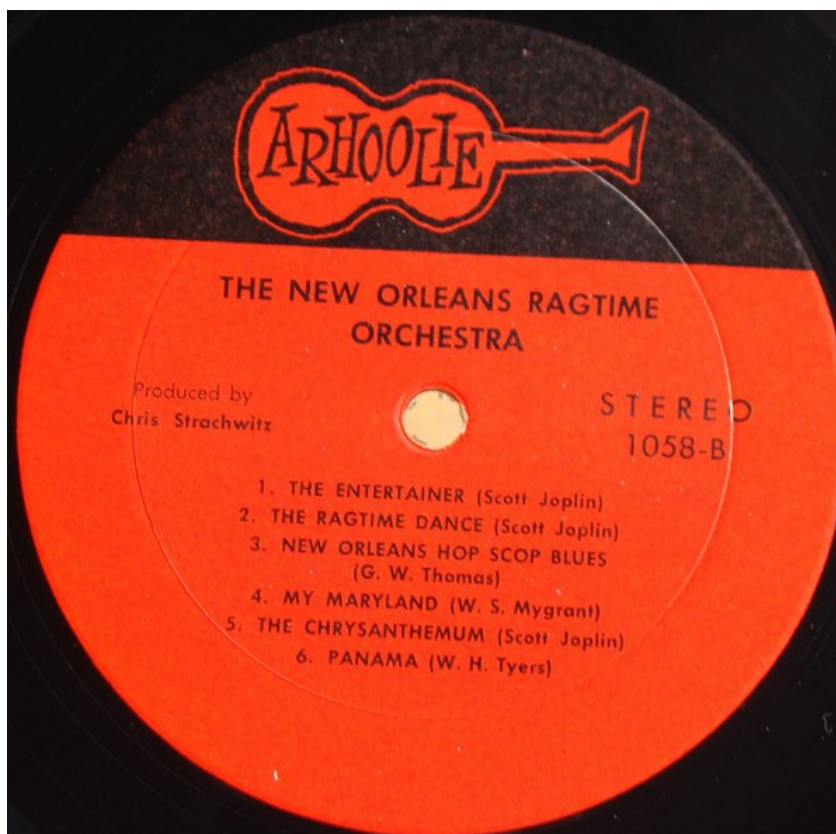
<https://secondhandsongs.com/performance/1003150>

**The Entertainer by New Orleans Ragtime Orchestra**

Trumpet – Lionel Ferbos, Trombone – Paul Crawford, Clarinet – Orange Kellin, Violin – William Russell, Leader, Piano – Lars Ivar Edegran, Bass – Frank Fields, Drums – John Robichaux

New Orleans, La. on May 19, 1971

LP Arhoolie 1058





**THE NEW ORLEANS  
RAGTIME ORCHESTRA**

*Photo by Dan Leyrer*



Records, Inc.  
Box 9195, Berkeley, Ca. 94719



**John Robichaux** (Born May 16, 1915 – Died August 29, 2005)  
Jazz drummer and vocalist. Robichaux was a drowning victim of Hurricane Katrina related levee failures and subsequent flooding.



<https://secondhandsongs.com/performance/944038>

**The Entertainer by New England Conservatory Ragtime Ensemble**

Trumpet – Charles Lewis, Trombone – Ray Cutler, Clarinet – Victor Sawa, Flute, Piccolo – David Reskin,  
Violin [1st] – Juan Ramirez-Hernandez, Violin [2nd] – Tibor Pusztai, Viola – Juan Dandridge, Cello –  
Bruce Coppock, Bass – Michael Singer, Piano – Myron Romanul,  
Conductor – Gunther Schuller (v bílém saku uprostřed snímku)

Drums – Mark Belair

Tuba – Gary Ofenloch

Arranged By – D.S. De Lisle (tracks: A2, A5, B3), E.J. Stark (tracks: A1)



angel

**Scott Joplin: The Red Back Book**

The Cascades • Sun Flower Slow Drag  
The Chrysanthemum • The Entertainer (piano solo)  
The Rag Time Dance

**1**

S-1-36060  
STEREO  
33 $\frac{1}{3}$

**NEW ENGLAND CONSERVATORY  
RAGTIME ENSEMBLE**  
conducted by **GUNTHER SCHULLER**

Recorded in the U.S.A.  
© 1973 Capitol Records, Inc.

