

Using GIS

for Visualizing Historical Data from Building Management System



Petr Glos

Masaryk University

Institute of Computer Science

GIS Department

Botanická 68a, 602 00 Brno, Czech Republic

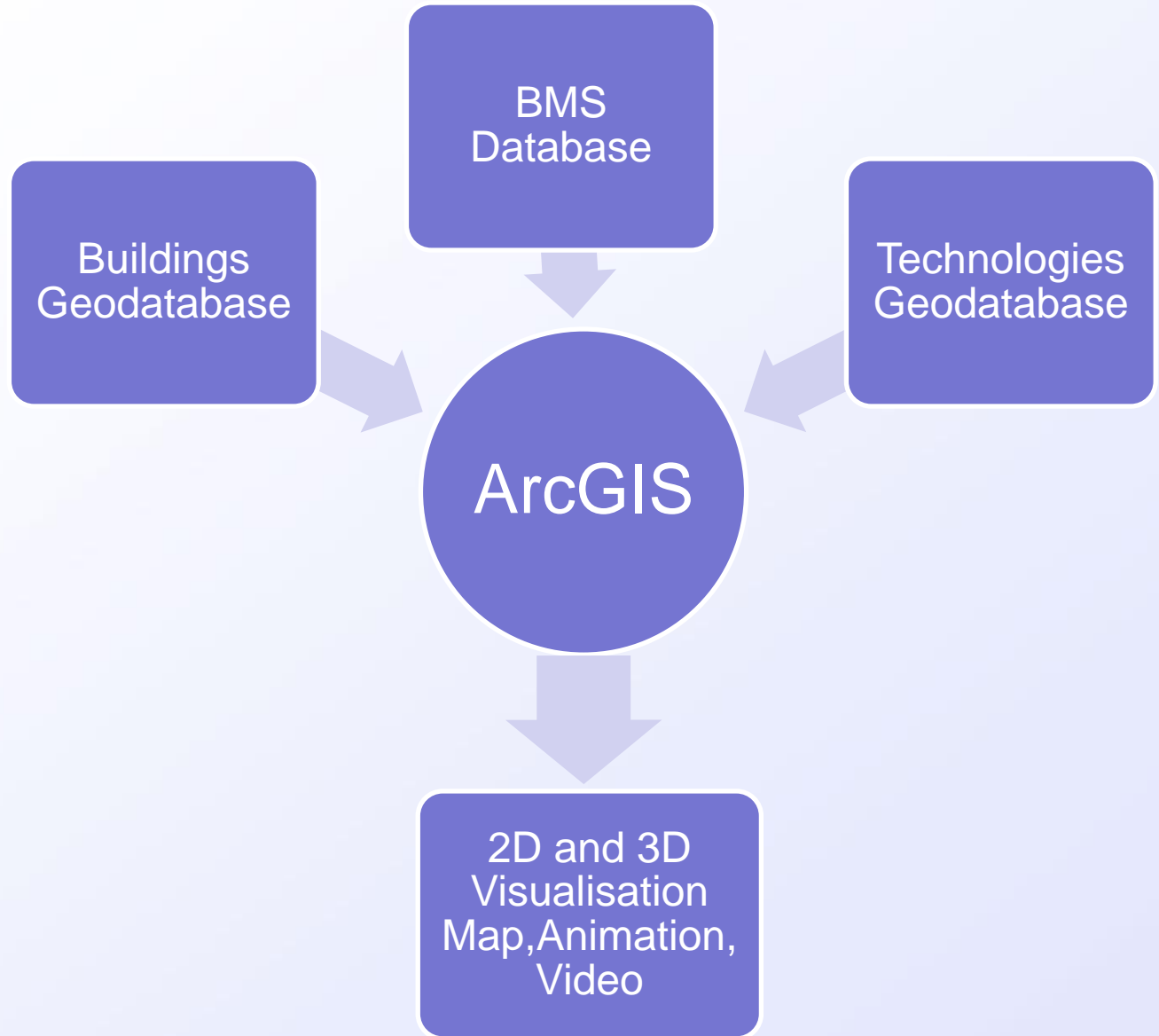
glos@ics.muni.cz

<http://maps.muni.cz>, <http://www.muni.cz>, <http://ics.muni.cz>

Outline



- GIS and ArcGIS
- Buildings
- Technologies
- BMS
- Historical Data from BMS
- 2D and 3D visualization
- Questions



GIS

Geographic Information System



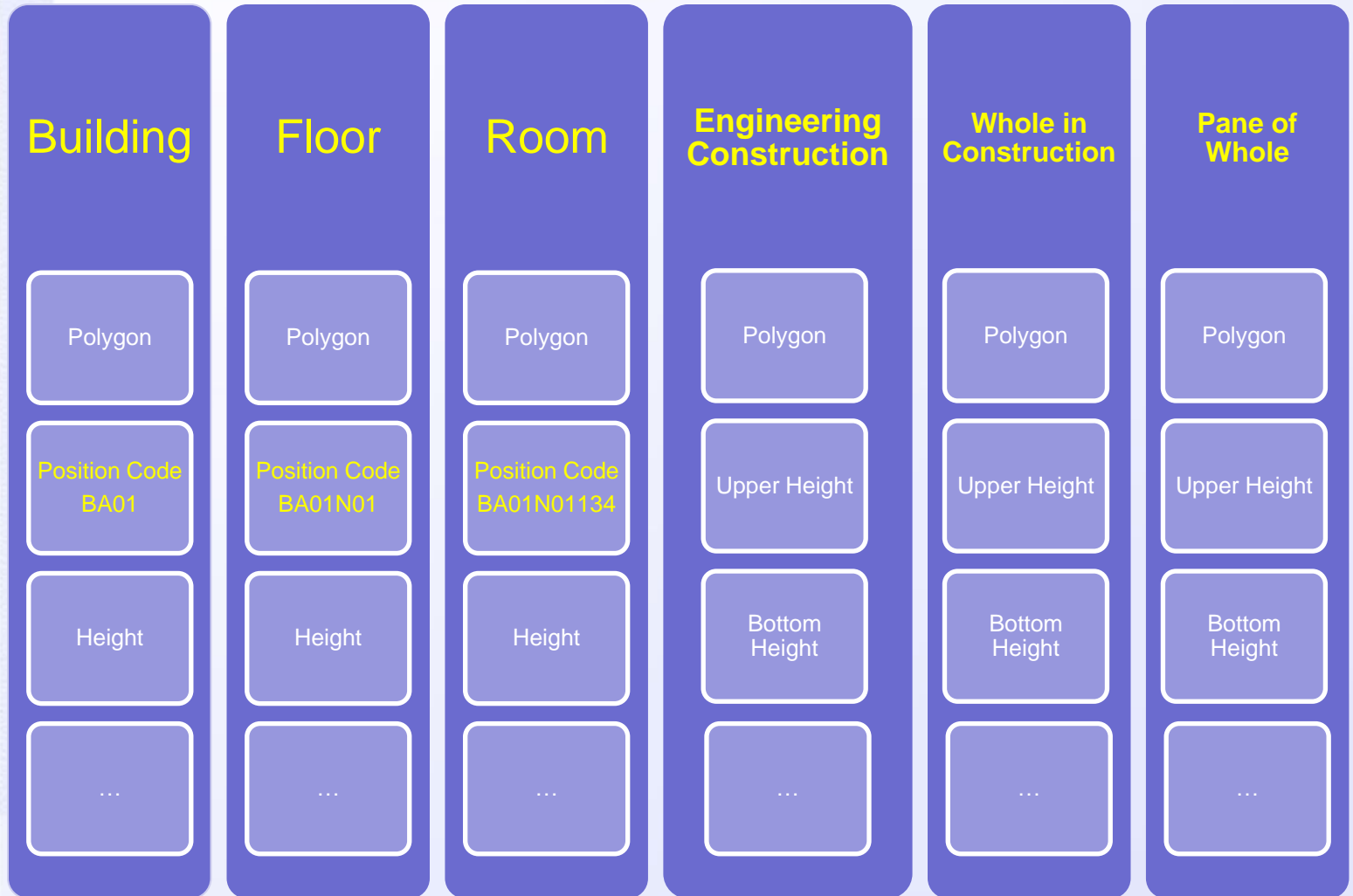
- $GIS = G + IS$
- $G = \text{Spatial context}$
 - Shape / What
 - Geometry
 - Point, Line, Polygon, 3D shape
 - Position / Where
 - Coordinates
 - WGS, S-JTSK,...
- $\text{GeoDatabase} = \text{Geo} + \text{Database}$
- Spatial relationships
- Topology rules
- Digital cartography
- Internet maps
- GPS
- ...

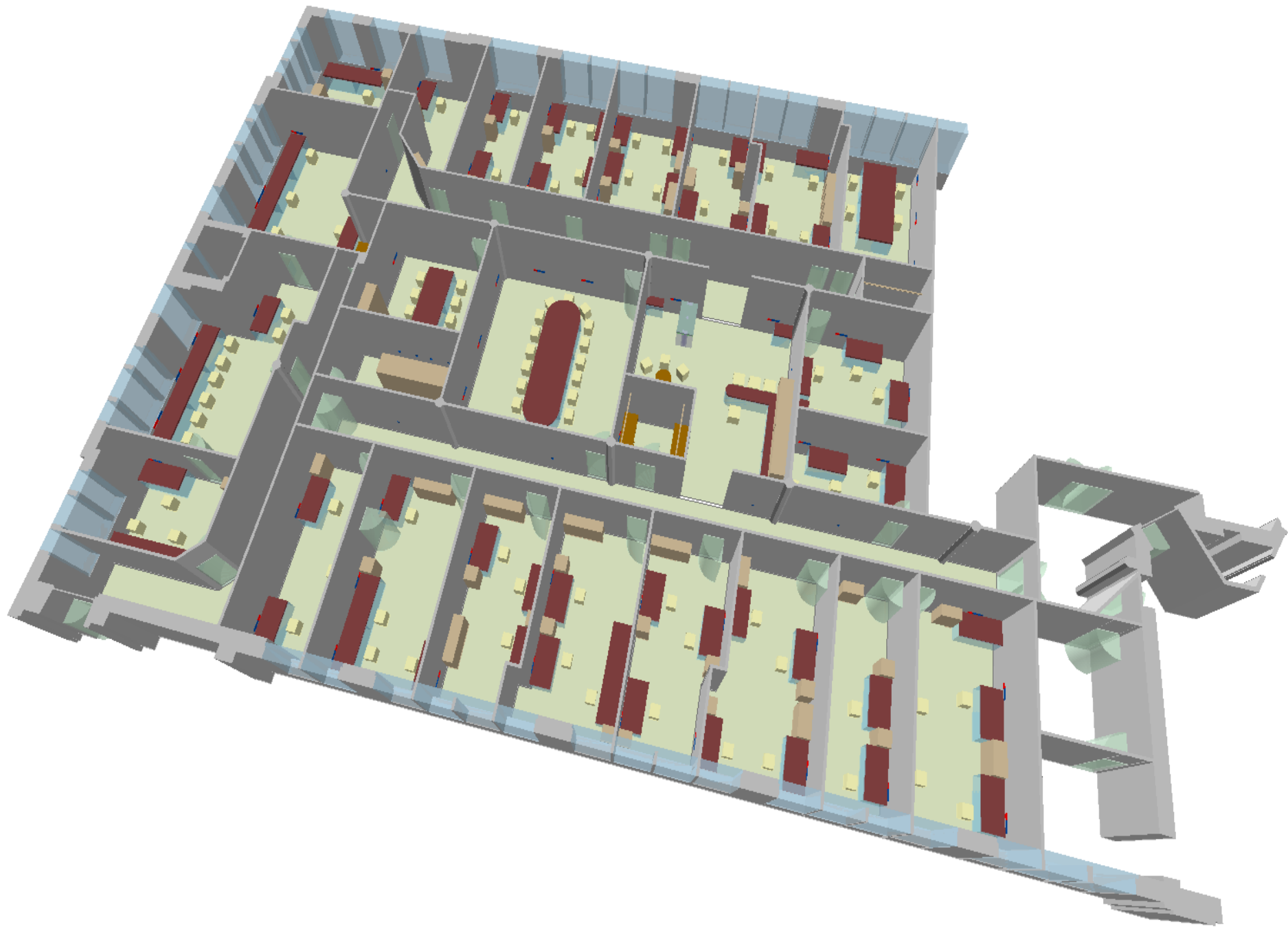
ArcGIS



- **Server**
 - ArcGIS Server
 - Map Services
 - ArcSDE
 - GeoDatabase
- **Desktop**
 - ArcCatalog
 - Data management
 - Metadata management
 - **ArcMap**
 - Data editing
 - Map authoring
 - **ArcScene**
 - 3D visualization
- **Mobile**
 - ArcPad
 - Mobile phone,
 - PDA

Buildings







Zetolnovo nam. 11

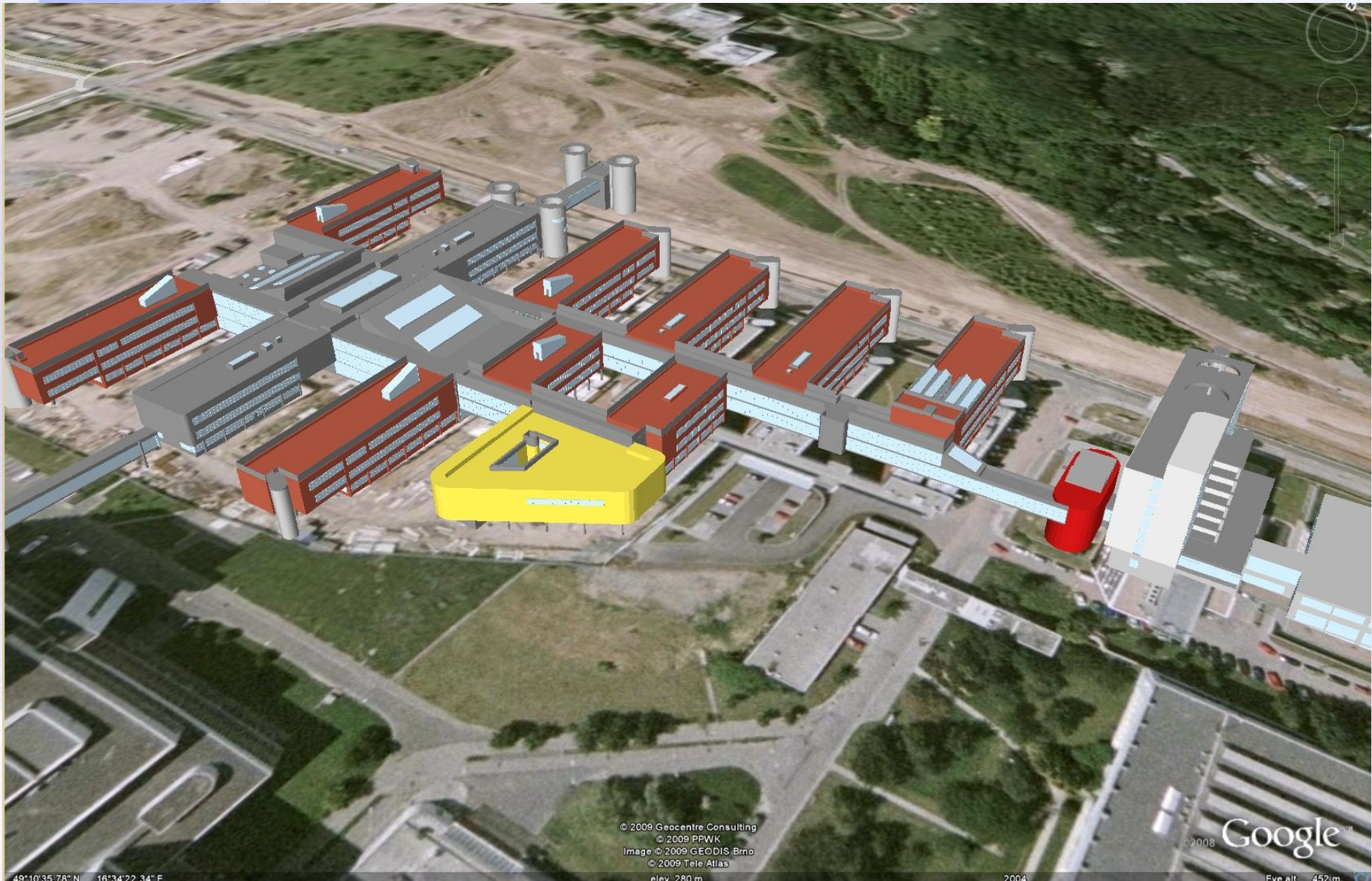
Brandlova



Image © 2007 DigitalGlobe
© 2007 Tele Atlas

© 2007 Europa Technologies

© 2007 Google™



© 2009 Geocentre Consulting
© 2009 PPWK
Image © 2009 GEODIS, Brno
© 2009 Teie Atlas
elev. 280 m

© 2008 Google™

49°10'35.78"N 16°34'22.34"E

2004

Elev. alt. 452 m

Technologies

HVAC, Fire alarm system , Access control, Intrusion system,...



System

Position
Code

Technology
Code

...

Device

Polygon, Line, Point

Position Code

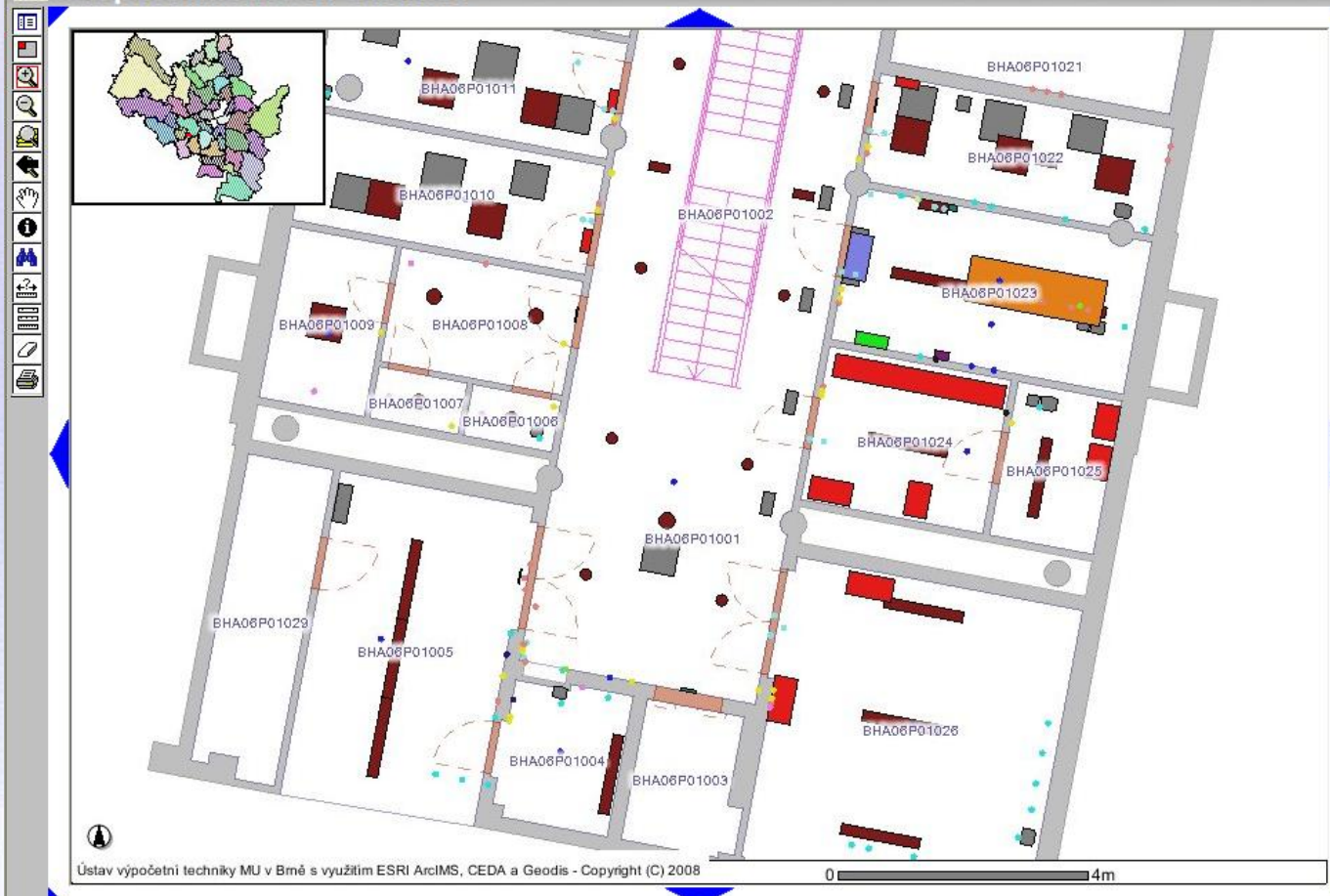
Technology Code

Upper Height

Bottom Height

...

Pasport místností a budov

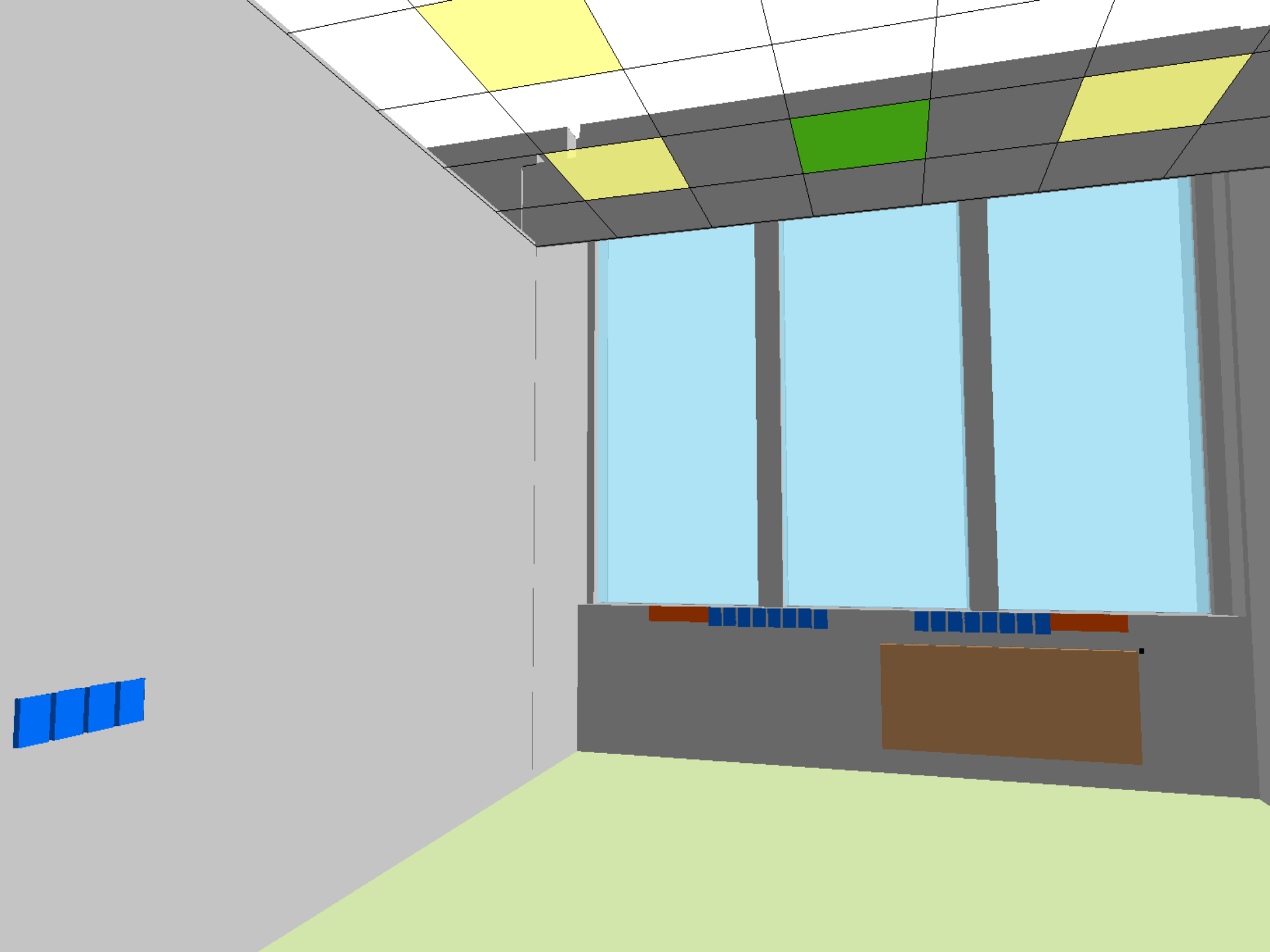


- B-poznámka
- Dveře
- Kóta-Poznámka
- Kóty
- Okna
- Orientační schodiště
- Otevírání dveří
- Půdorys budovy
- Půdorys budovy ISKN
- Půdorys místnosti
- Půdorys podlaží
- P-poznámka
- Stavební konstrukce
- Technologický pasport
 - Datovka
 - DAT
 - SLB_DAT_POINT
 - SLB_DAT_POLYGON
 - Silnoproud
 - ROZVADEC
 - SPOTREBIC
 - SVITIDLO
 - SLN_VYPINAC_POINT
 - SLN_ZASUJKA_POINT
 - Slaboproud
 - EPS
 - EZS
 - SLB_CCTV_POINT
 - SLB_DT_POINT
 - SLB_EKV_POINT
 - SLB_JC_POLYGON
 - SLB_STA_POINT
 - SLB_TEL_POLYGON
 - Vzduchotechnika
 - VZT
 - VZT_POINT
 - VZT_POLYGON
 - Patch panely
 - Zařizení

Ústav výpočetní techniky MU v Brně s využitím ESRI ArcIMS, CEDA a Geodis - Copyright (C) 2008

0 4m

Zvětšení

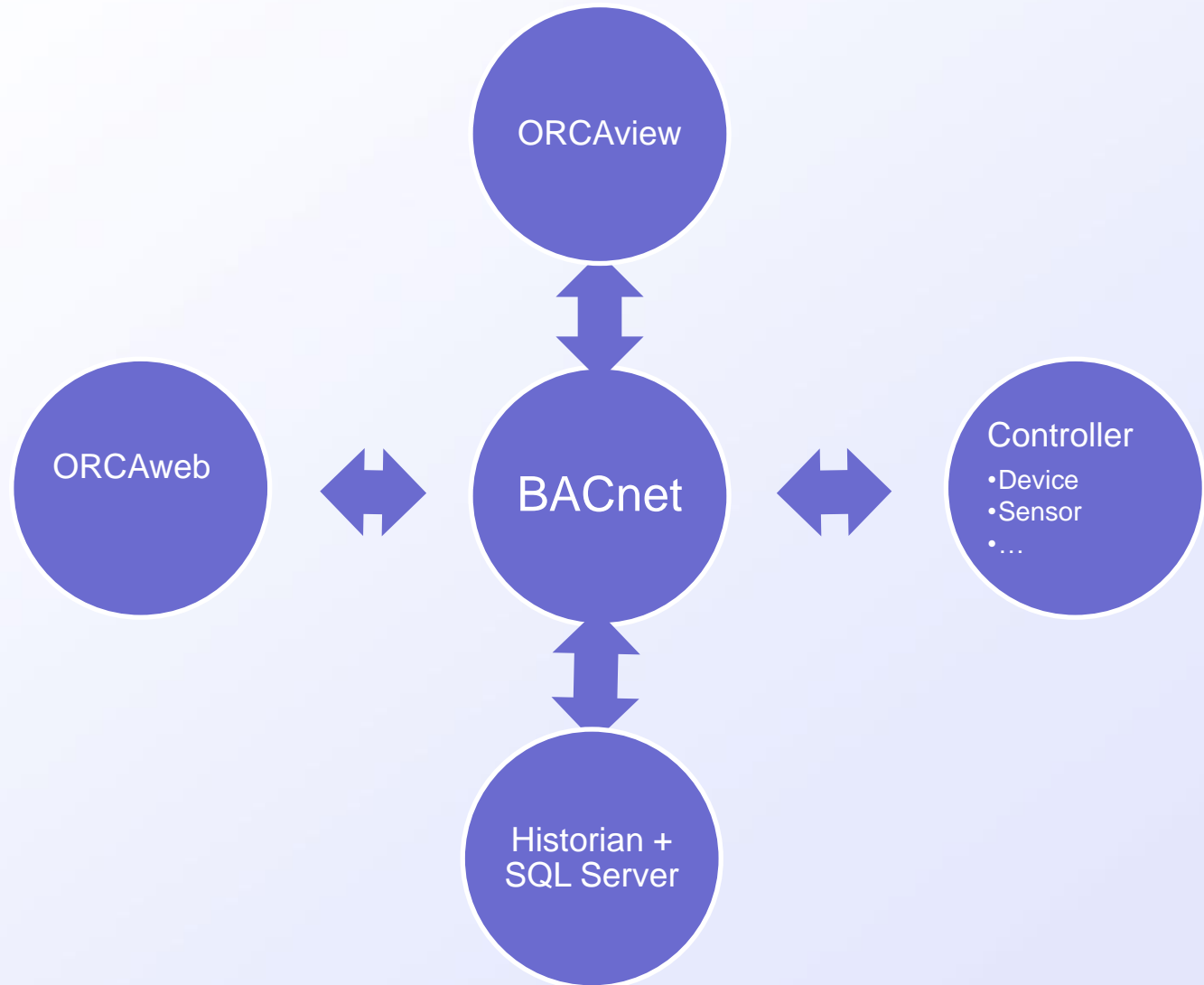


Building Management System

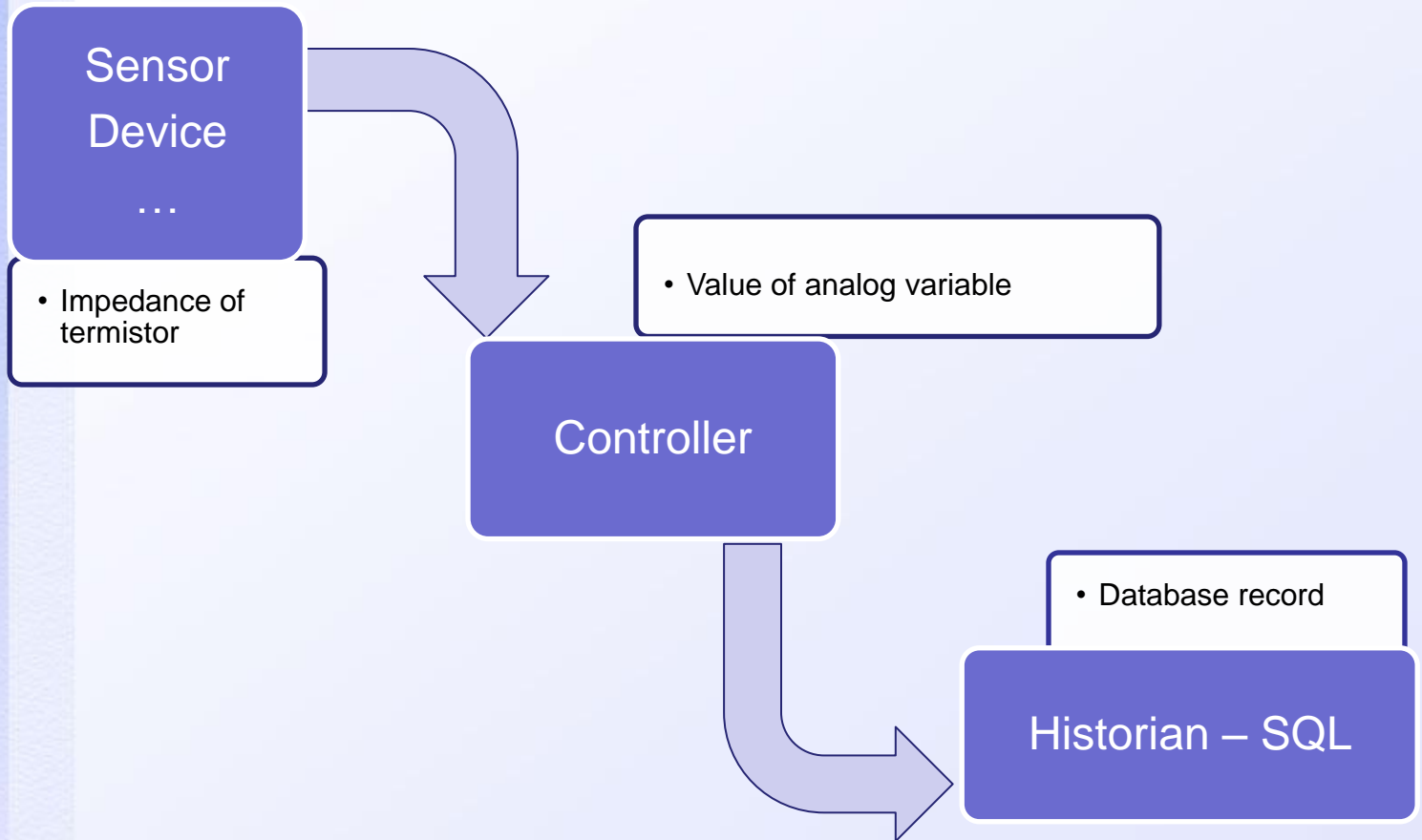
- Integrated environment for building operation and management
 - BACnet
 - Open Standard
 - IT x Building Technologies
- ONLY ONE application for all buildings of University Campus Bohunice
- Desktop version for problem resolving
 - Anywhere on Technology Network
 - ORCAView - DELTA Controls
- Web version for building operation
 - 2 servers
 - Anywhere on Data Network
 - ORCAWeb - DELTA Controls
- Historical Data
 - 2 servers
 - Historian - DELTA Controls
 - MS SQL Server



Building Management System



Collecting and Archiving Data from BMS



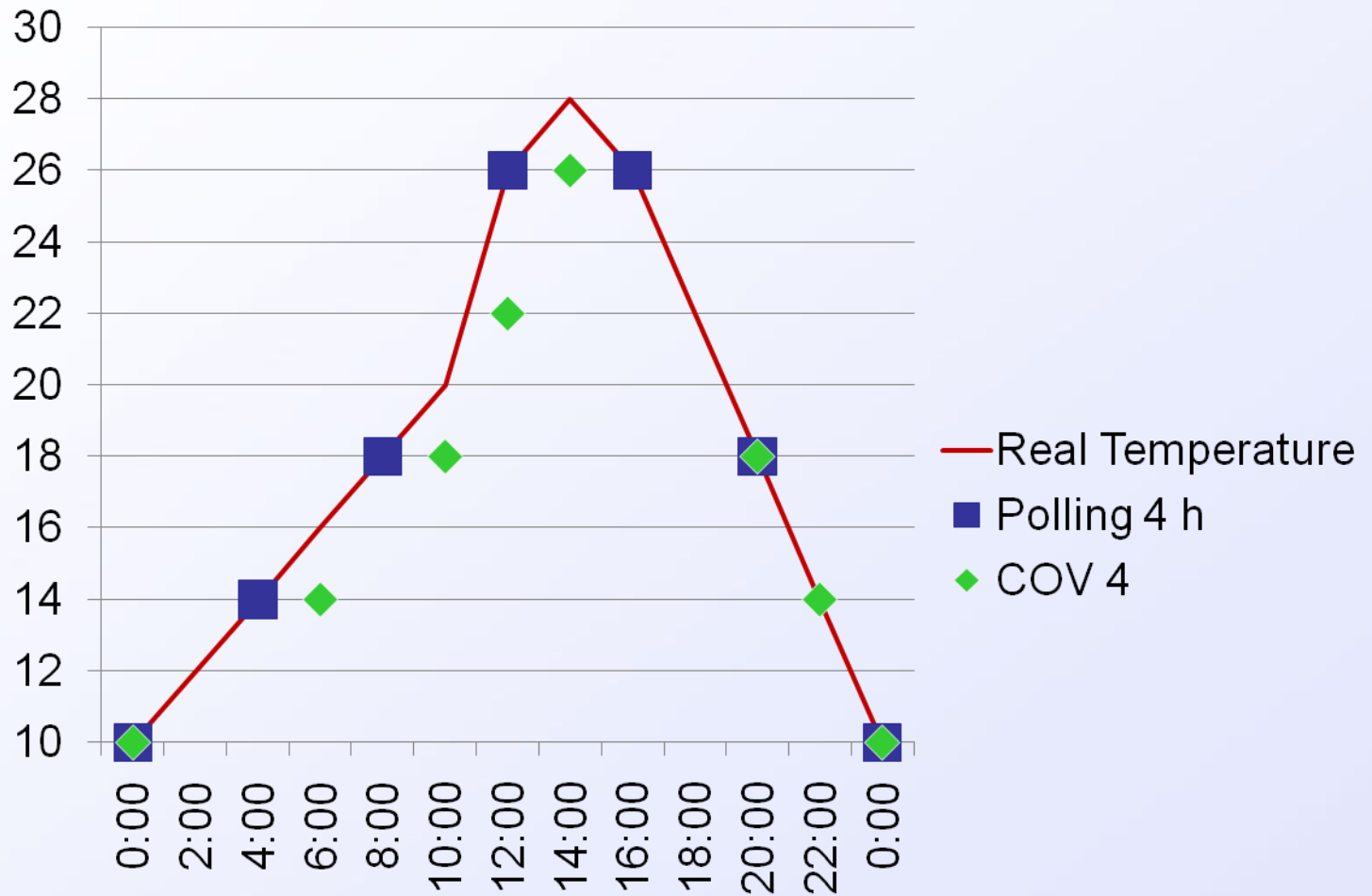
Trendlog

object for collecting and archiving data from BMS



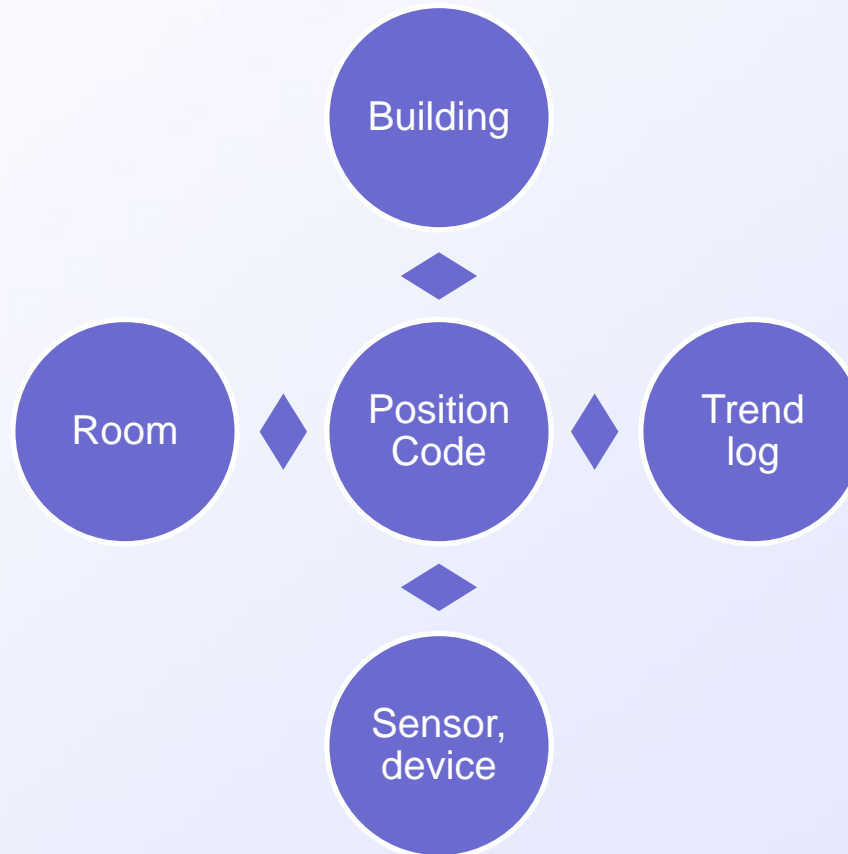
- **Attributes**
 - Position code,
 - Technology code
 - Time
 - Value
- **Polling - Time Interval**
 - 1 h = 1 value each our is registered
- **Change of Value**
 - 2 °C = next value is registered if temperature changes for 2 °C from previous stored value
- **Controllers have buffers for data of trendlogs.**
- **Historian store data to SQL Server database.**

Historical Data from BMS



Visualization

- Position Code - key item for data integration



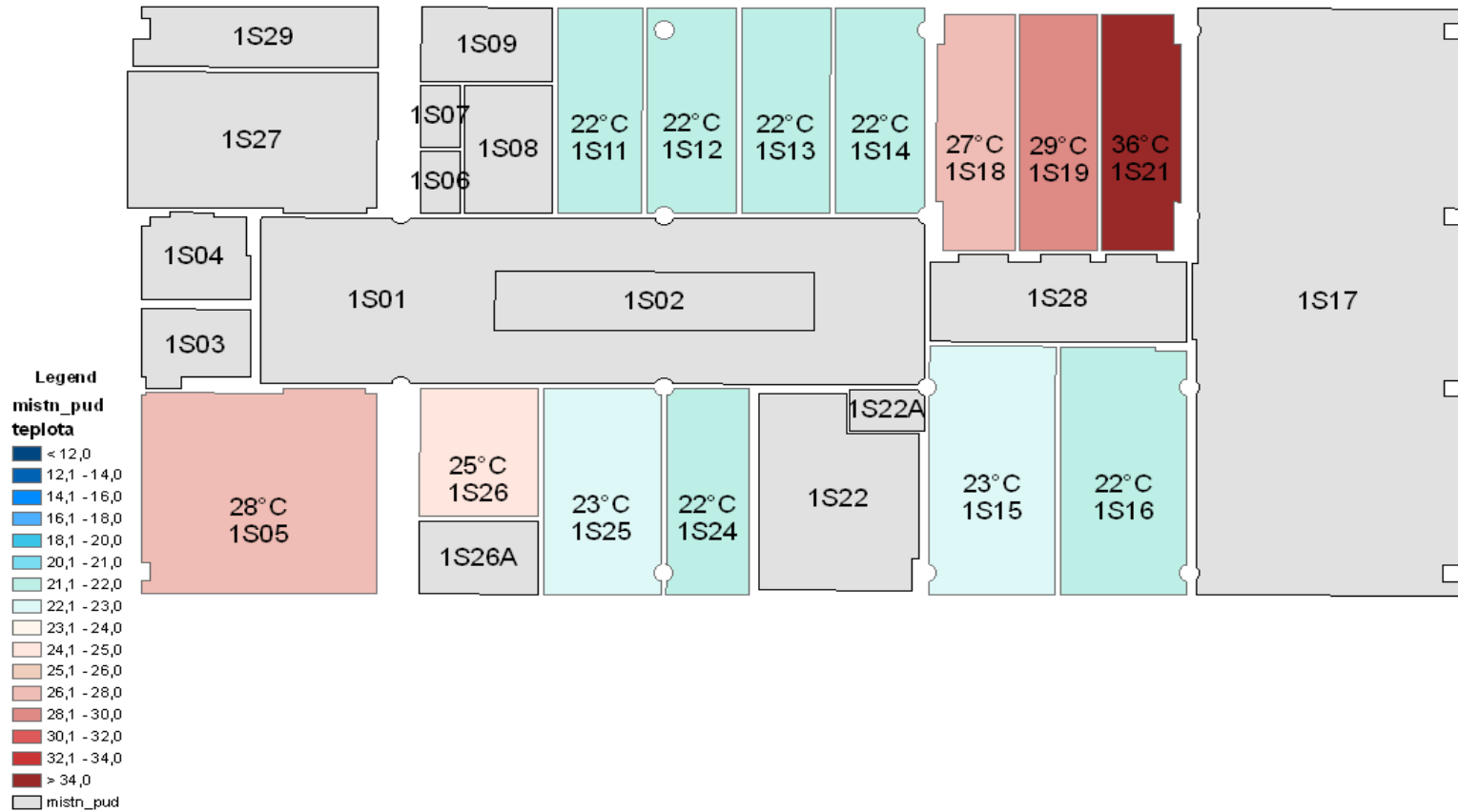
Visualization



- ArcMap
- ArcScene
- 2D and 3D Thematic Map
 - Values for given instant of time
 - Average, minimum, maximum values ... for time period
- 2D and 3 D Animation
 - Values for given time period
 - Video
- Examples
 - Room temperatures
 - Electric energy consumption

2D Thematic Maps

Room Temperatures



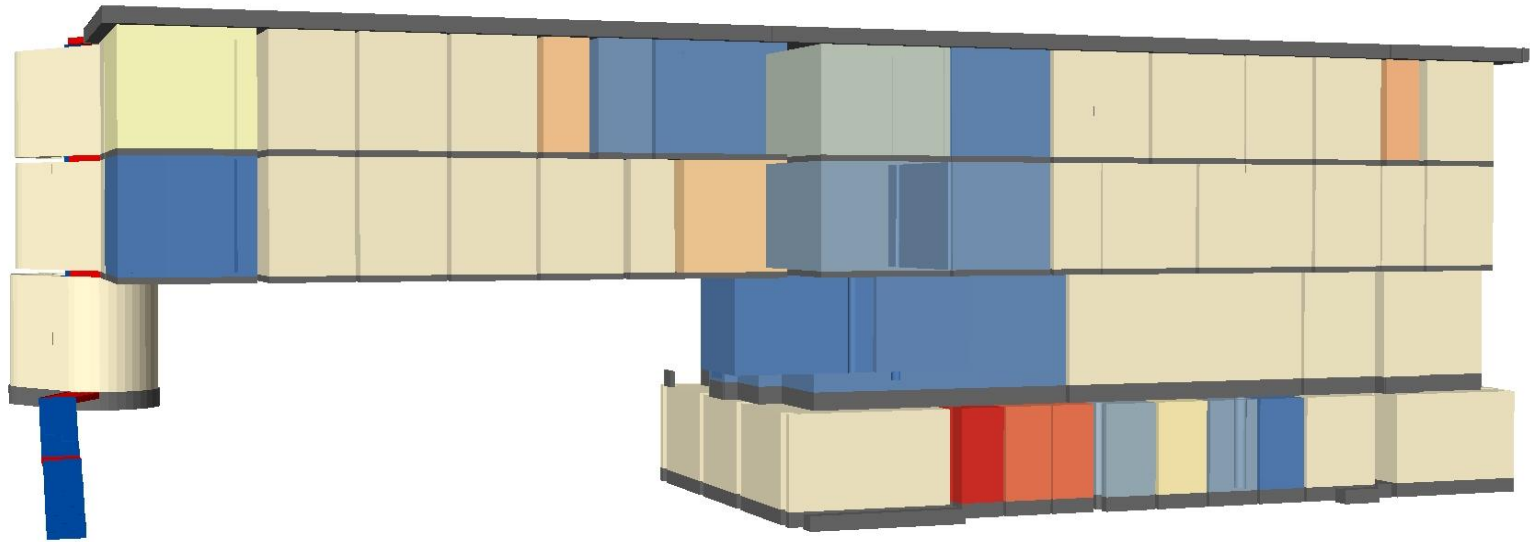
2D Thematic Maps

Electric Energy Year Consumption



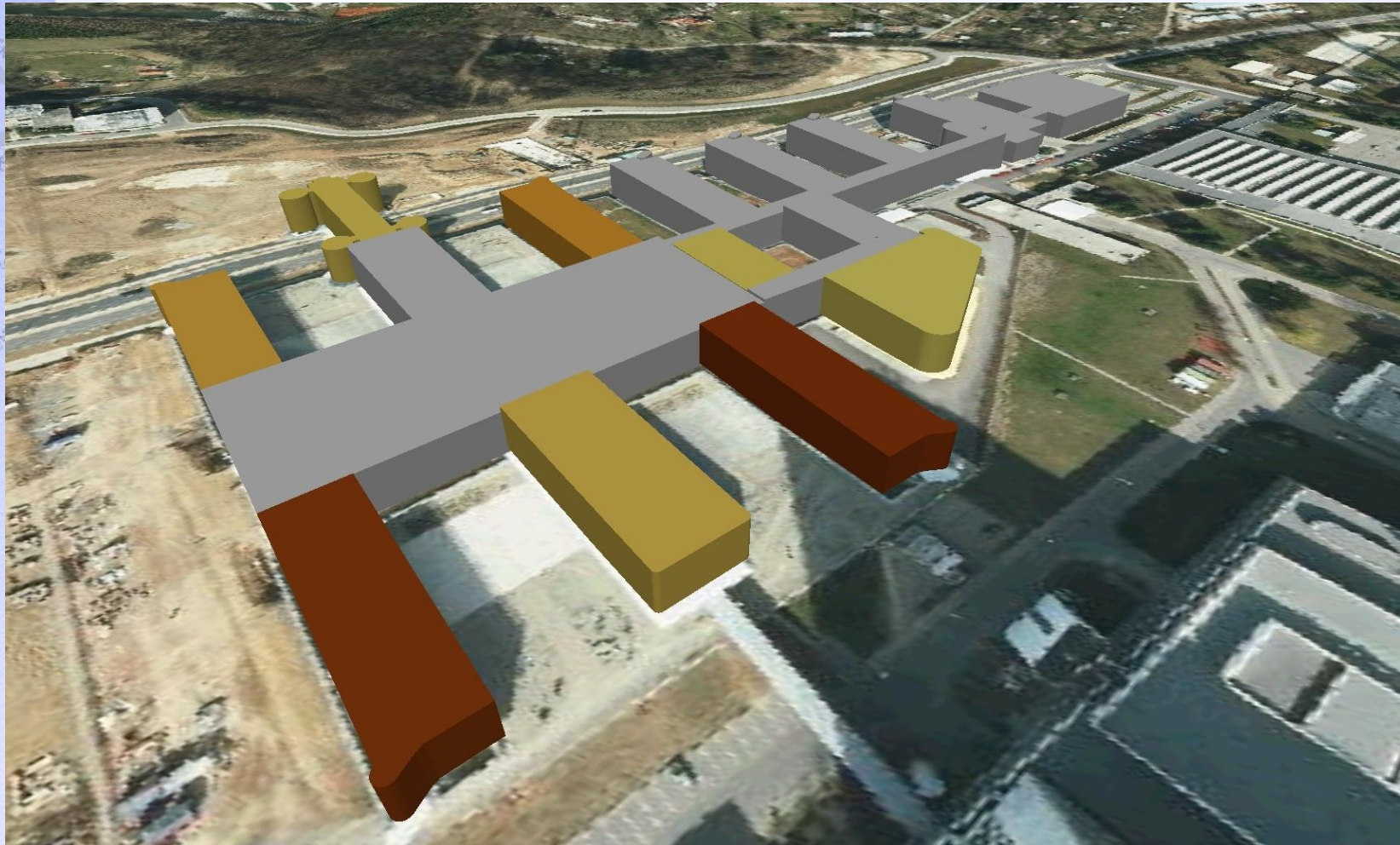
3D Thematic Maps

Room Temperatures

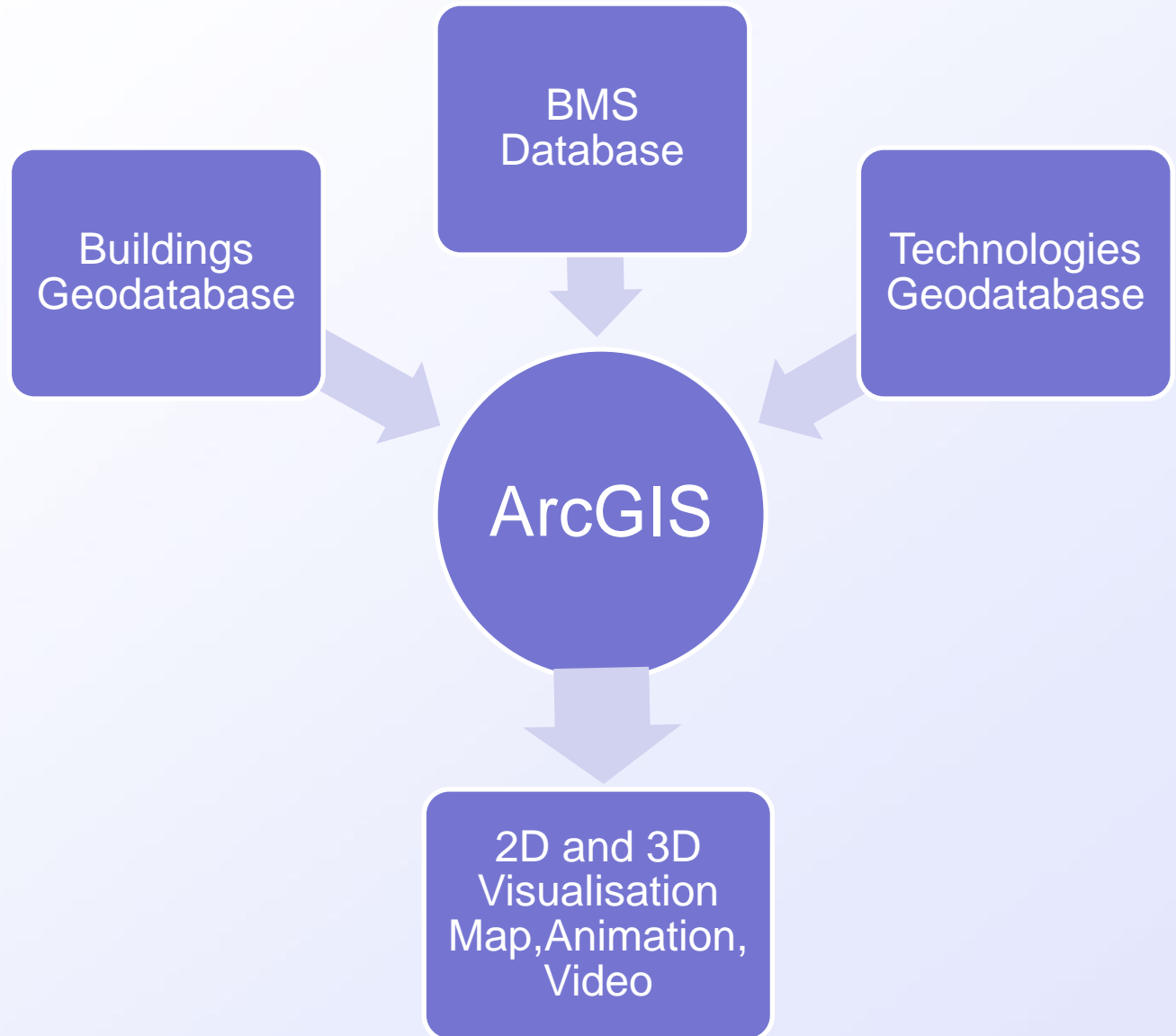


3D Thematic Maps

Electric Energy Consumption



Summary





Questions ?

Thank you for your attention.

Petr Glos
Institute of Computer Science
Masaryk University
Botanická 68 a, 602 00 Brno
glos@ics.muni.cz
<http://www.muni.cz>
<http://ics.muni.cz>
<http://maps.muni.cz>