

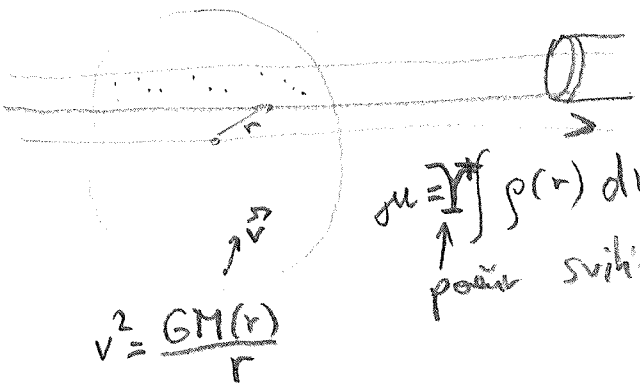
Plôška' fotometrie galaxií

- co jsou faloxyál → svítí tam hvězdy
- zjistíme počet hvězd $\approx 10''$
- dynamika galaxií:

$$\nabla^2 \varphi(r) = 4\pi G \rho(r), \quad \varphi(r) = \int \frac{\rho(r')}{r} dV' \quad \text{koncentrace}$$

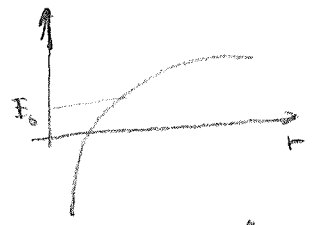
$$\int_{\mathbb{R}^3} f(\vec{r}, \vec{v}, t) d\vec{p} = \frac{h}{N}$$

→ rozložení funkce (histogram)
 $f \sim e^{-E/E_0}$



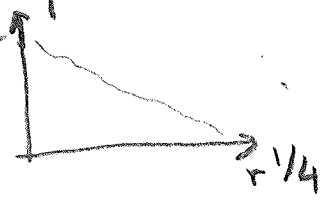
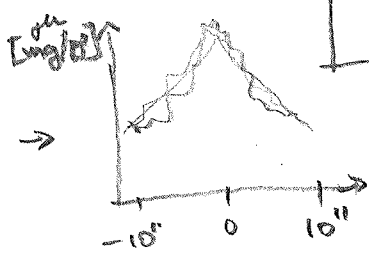
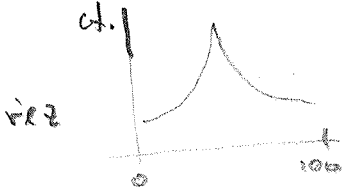
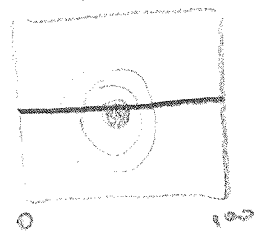
$$\mu = \int \rho(r) dr$$

↑
počet svítka $\frac{L}{M} > \alpha$



Typický profil de Vaucoullera

- postup na snímku:



- převést ct. na mag...
- určíme měřítko
- postup