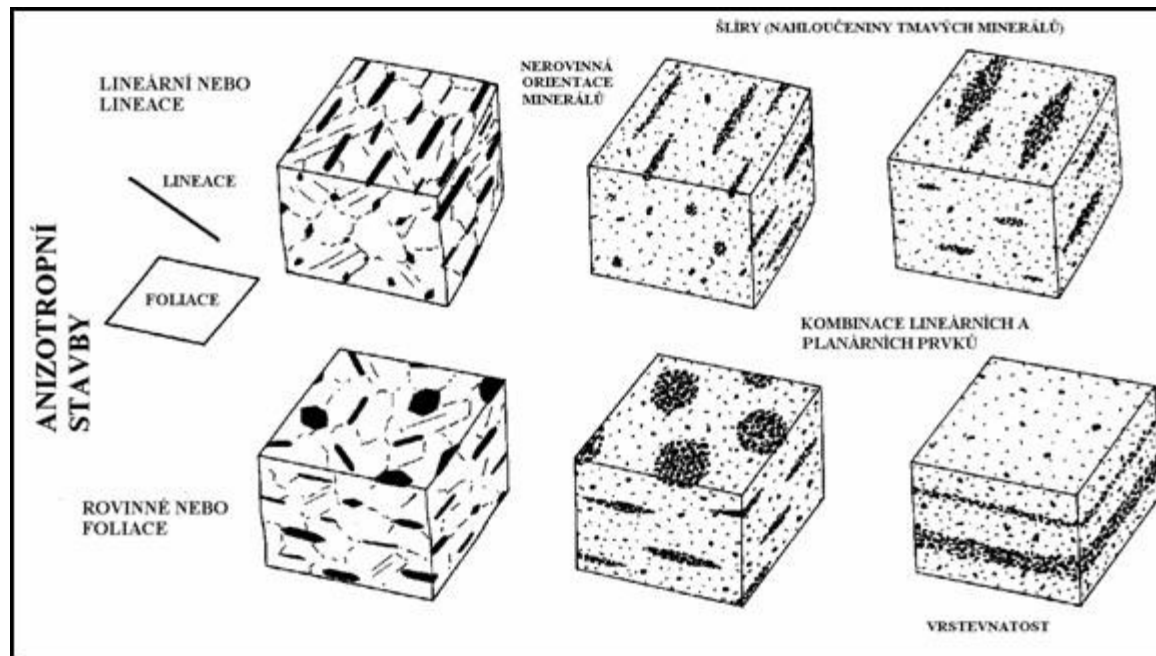
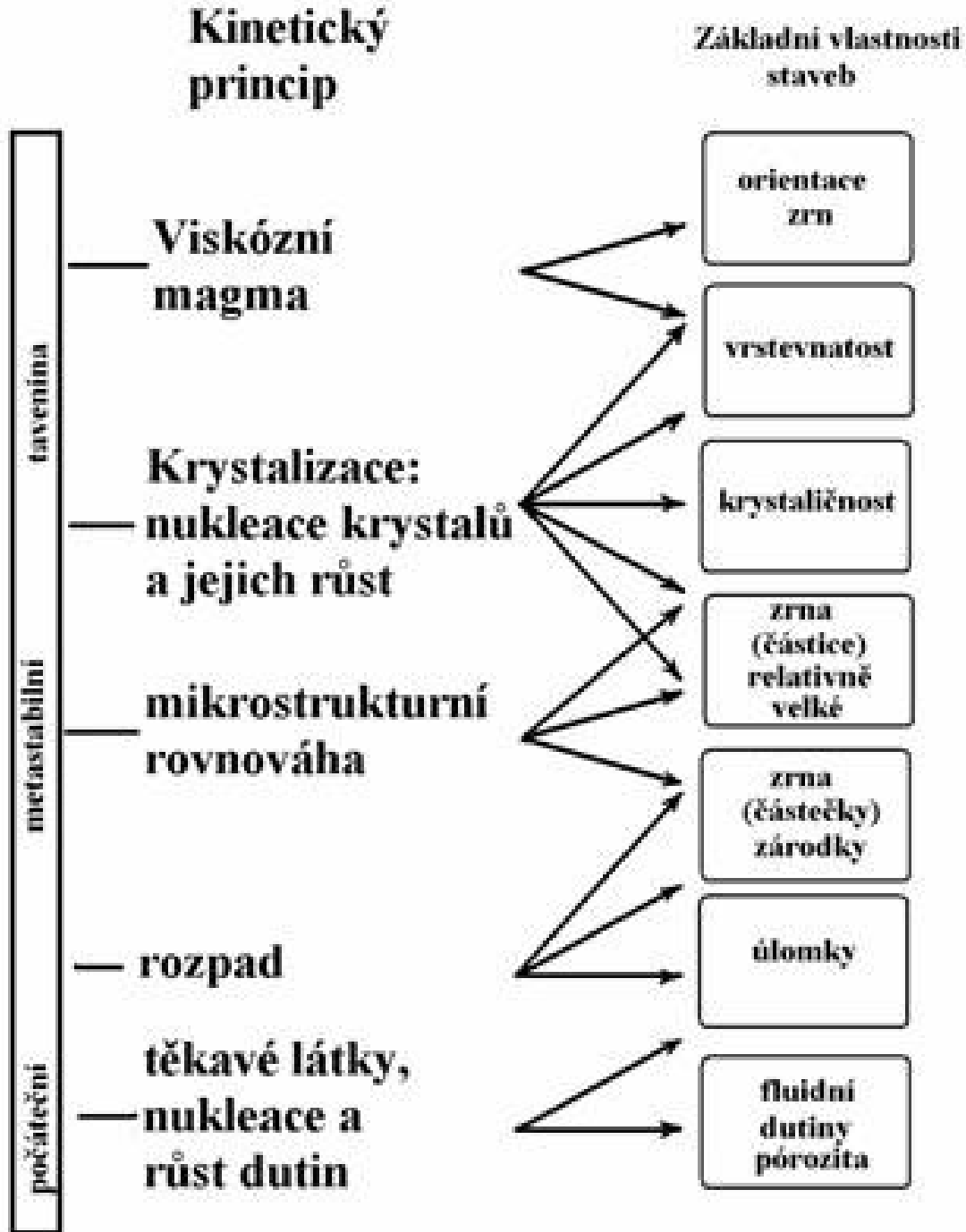


# Kinetika stavby magmatických hornin

- Stavba
  - Struktura - Strukturou se zpravidla rozumí prostorové uspořádání součástí.
  - Mikrostruktura - Mikrostruktury magmatických hornin můžeme rozčlenit do několika skupin podle zvolených znaků:
    - způsobu krystalizace (stupně krystaličnosti);
    - absolutní a relativní velikosti součástí;
    - podle tvaru součástí, vývoje krystalů a jejich omezení (automorfie - omezení součástí, změny tvaru před ukončením procesu tuhnutí, změny tvaru vyvolané i v pevné hornině apod.).
  - Odráží tedy vzájemné vztahy mezi jednotlivými horninovými složkami.
- Rozdíl v terminologii české a anglické

# Best a Christiansen (2001)

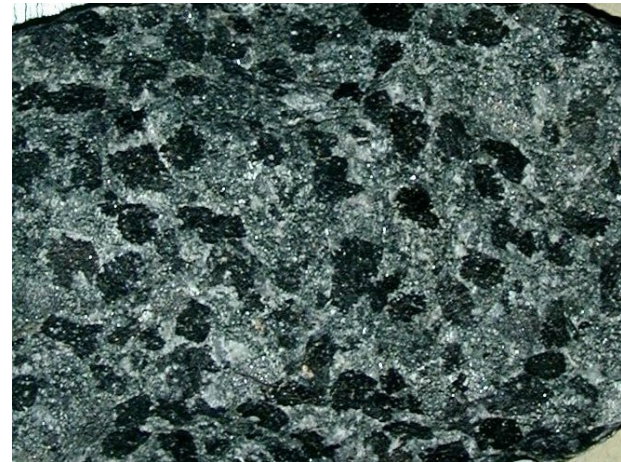




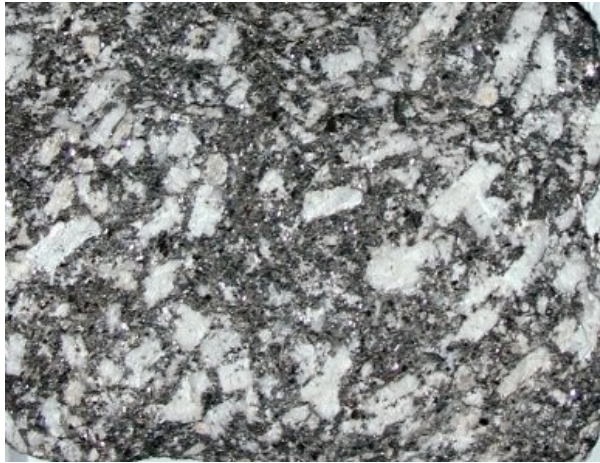
Rozdíl mezi plutonickou a vulkanickou horninou světlou a tmavou - na základě velikosti zrna



# Všesměrně zrnité struktury hornina leukokratická - melanokratická



Lineárně paralelní – smouhovitá  
(plutonity)



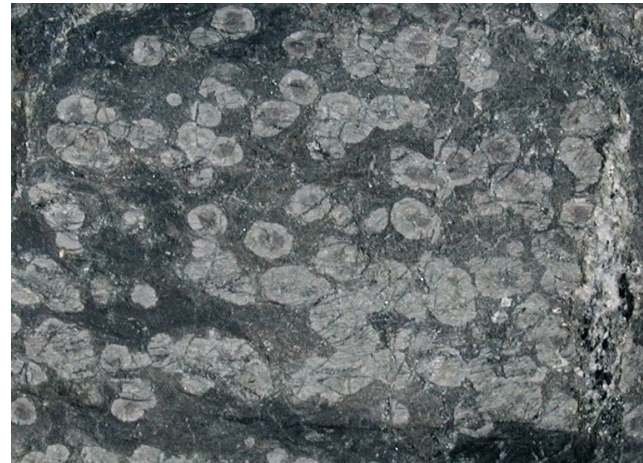
Lineárně paralelní (fluidální)  
- kompaktní (vulkanity)



# Kontakt plutonit - vulkanit

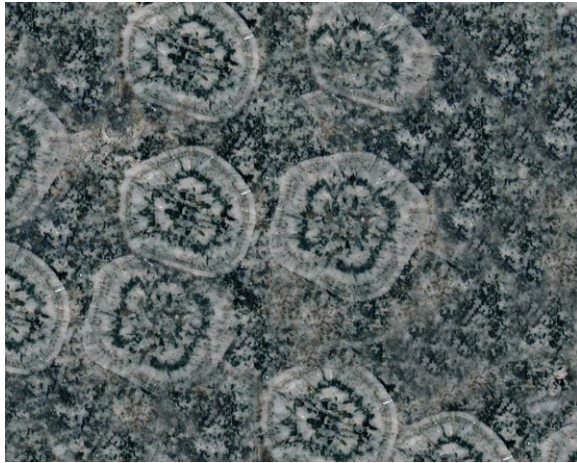


# Pórovité – otevřené mandlovcovitá - sférolitická

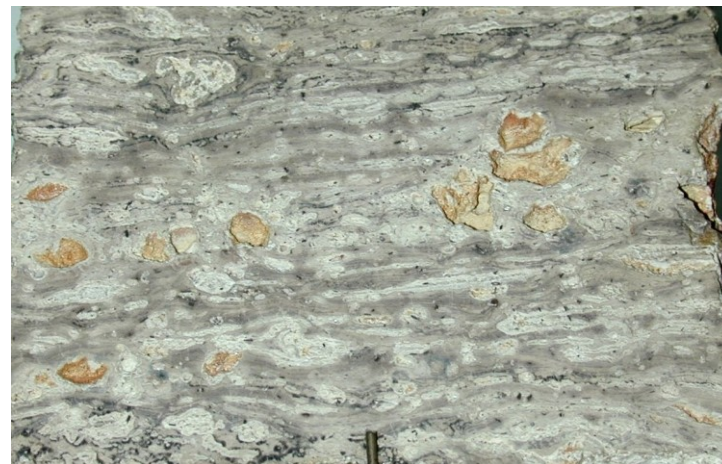




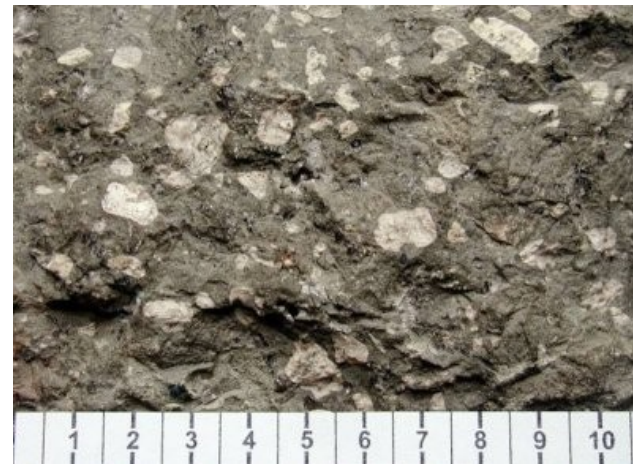
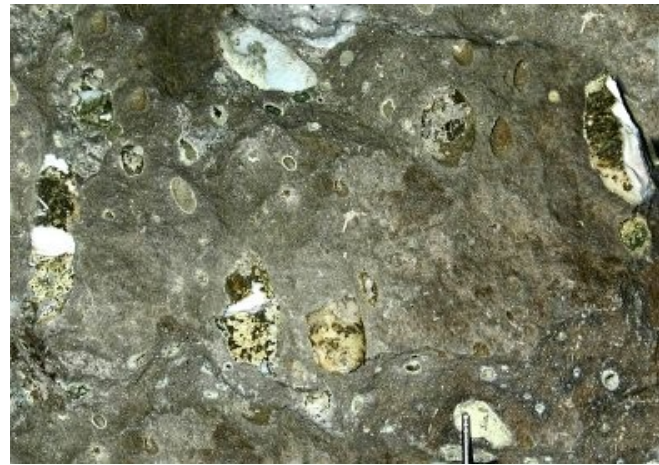
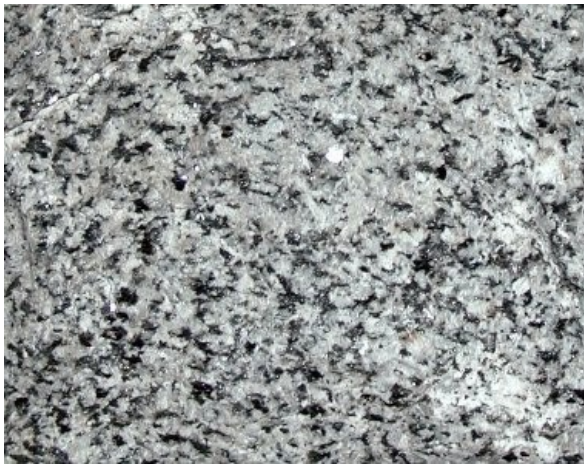
Orbikuly – plutonit (diority) – andezit  
rapakiwi



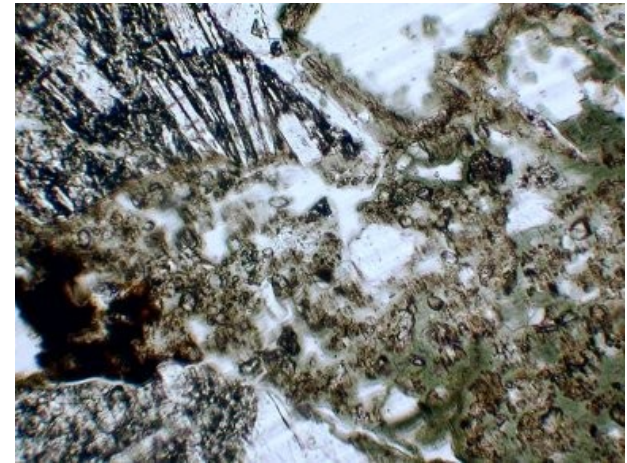
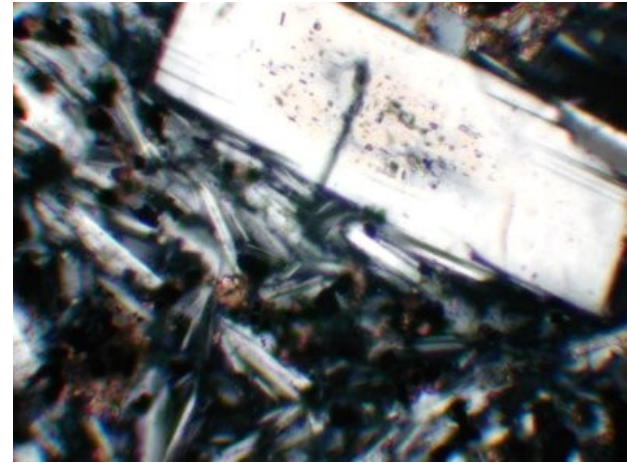
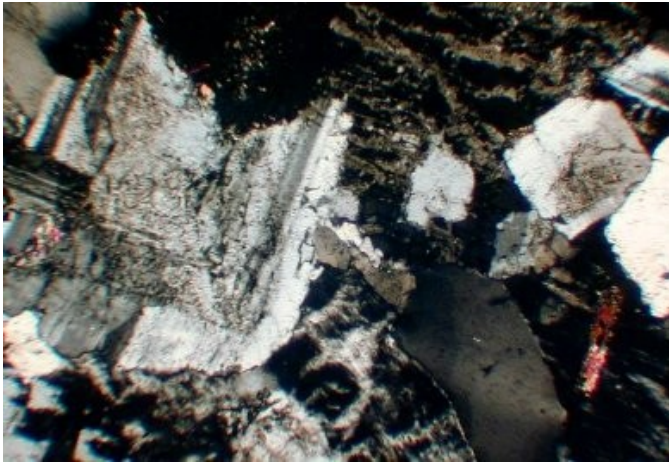
# Sklovitá, hemikrystalická, štěpení magmatu, asimilace



# Fanerit - afanit porfyrický fanerit – porfyrický afanit



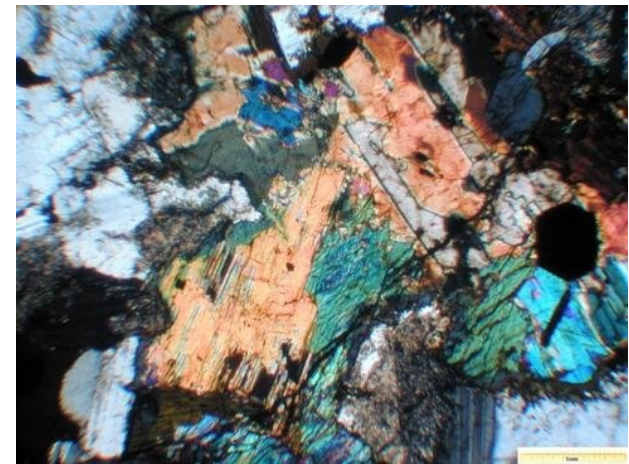
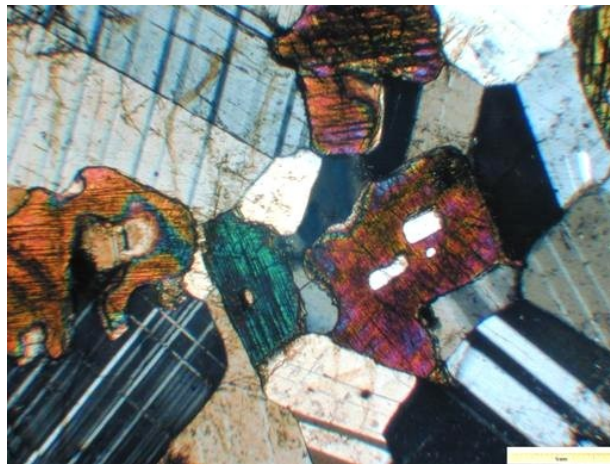
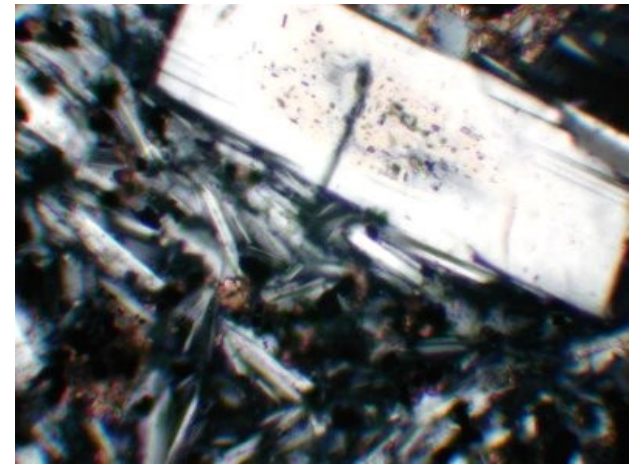
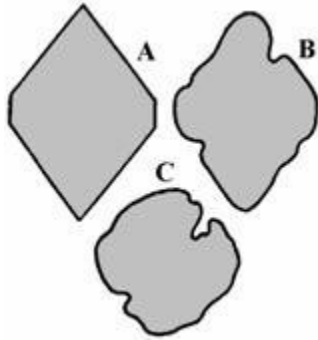
# Stupeň krystaličnosti holokrystalická – hemikrystalická - sklovitá



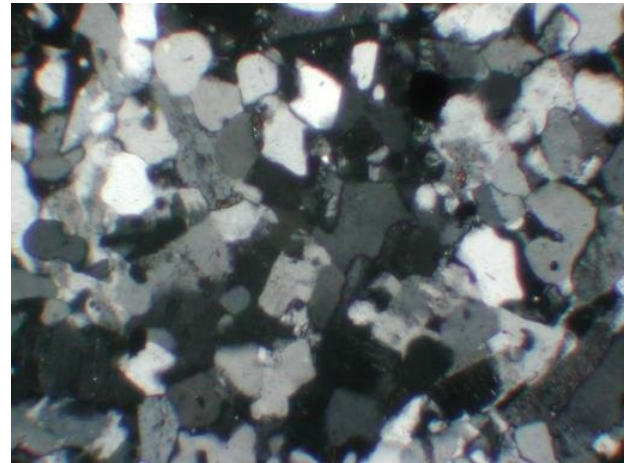
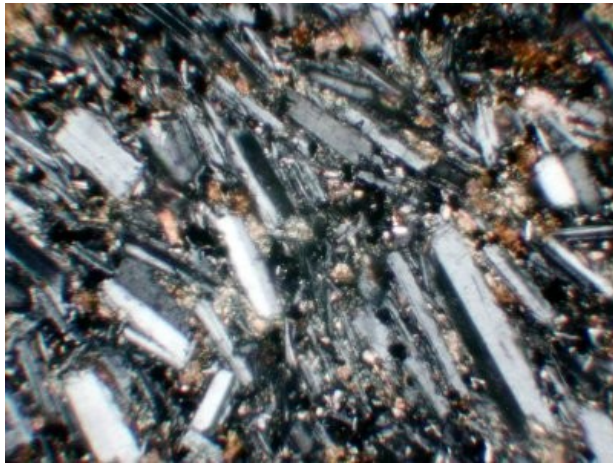
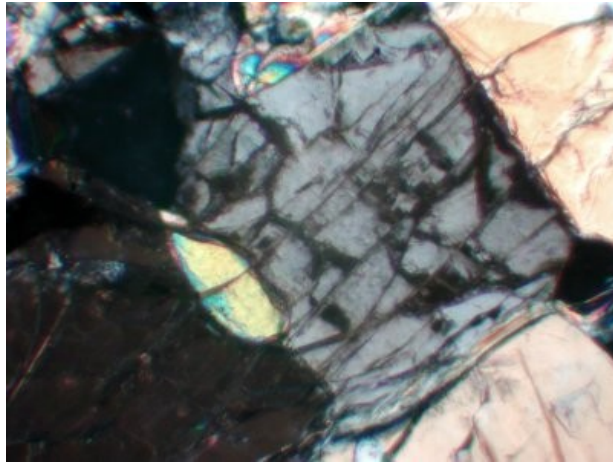
# Porfyrická vyrostlice – základní hmota



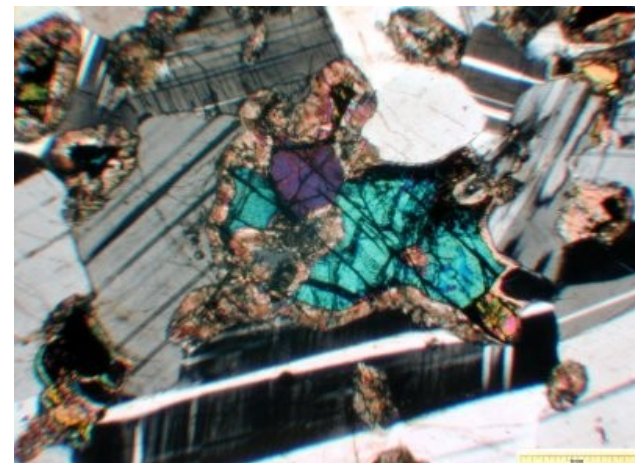
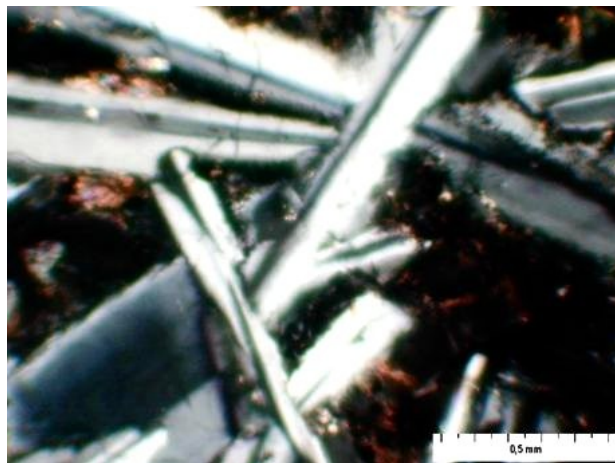
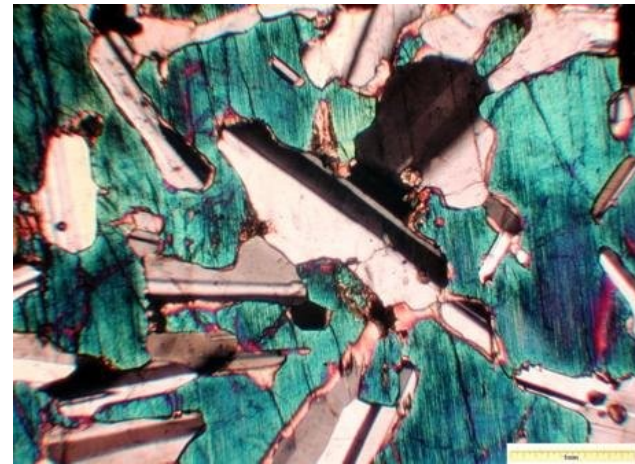
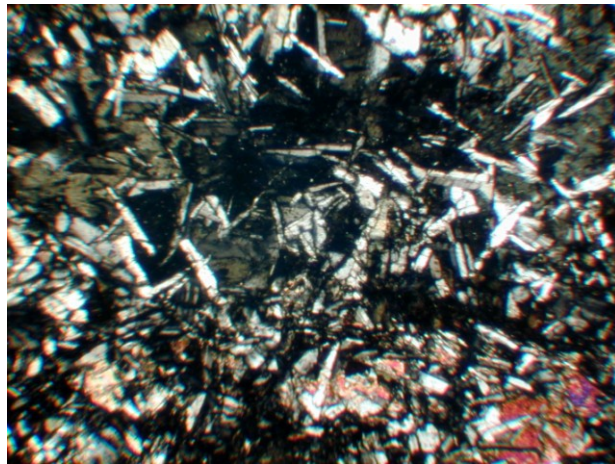
# Omezení minerálů: automorfní, hypautomorfní, xenomorfní omezení minerálů



Mikrostruktura panautomorfně zrnitá, hypautomorfně zrnitá,  
hypautomorfně prismaticky zrnitá, panxenomorfně zrnitá

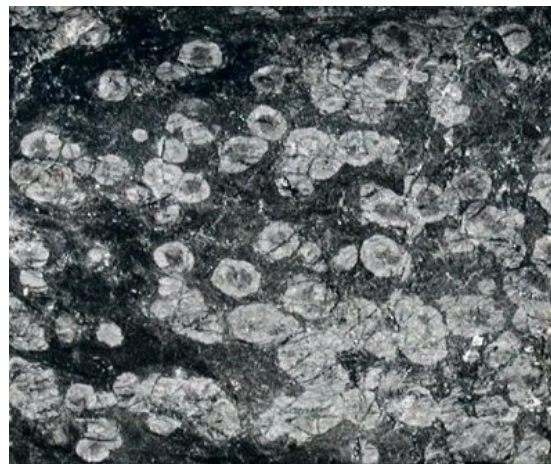
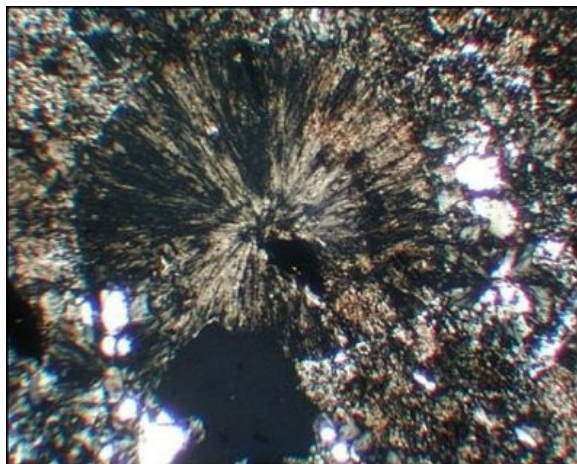


# Hypautomorfně zrnitá – ofitická, hyaloofitická, poikiloofitická, granuloofitická

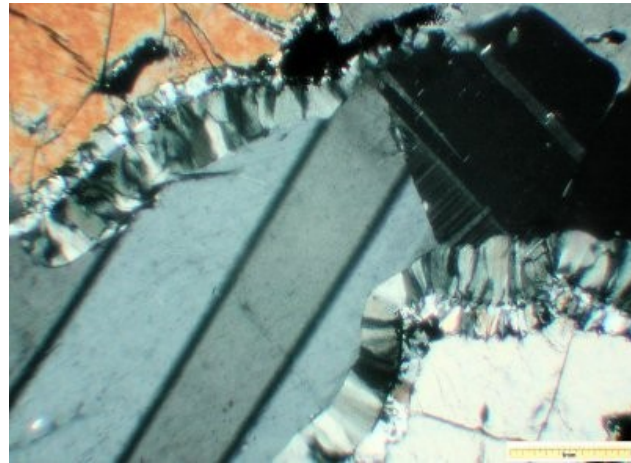
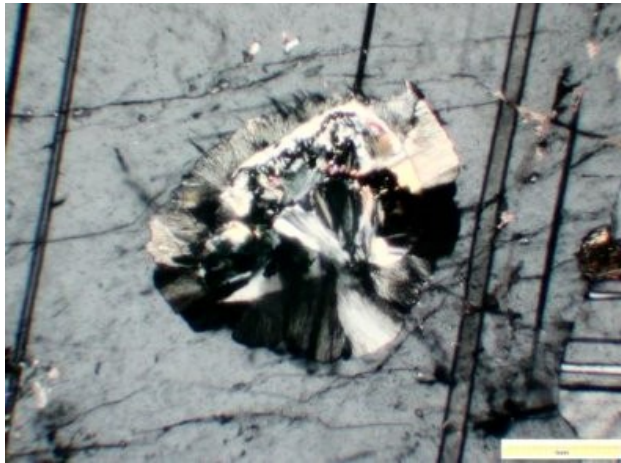
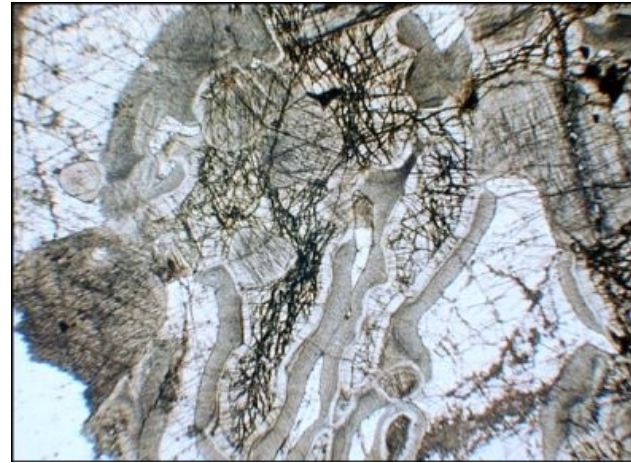




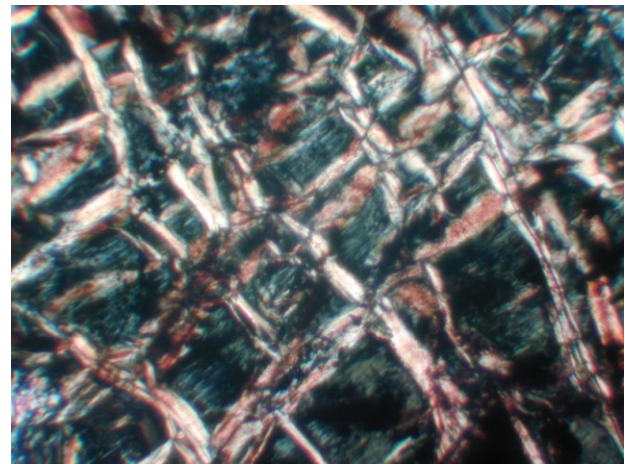
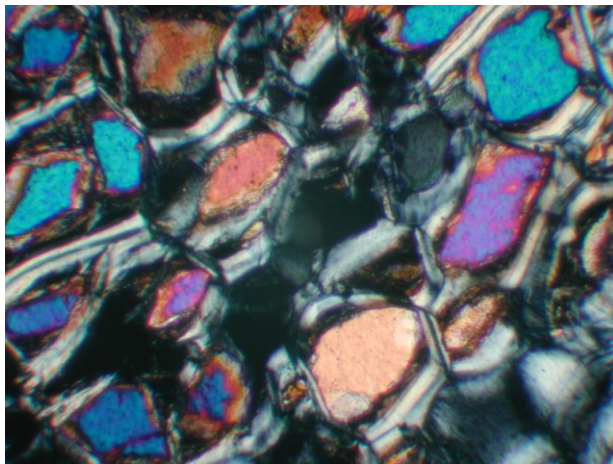
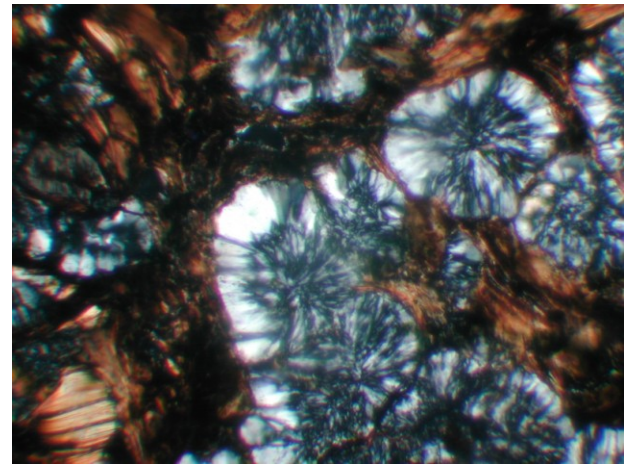
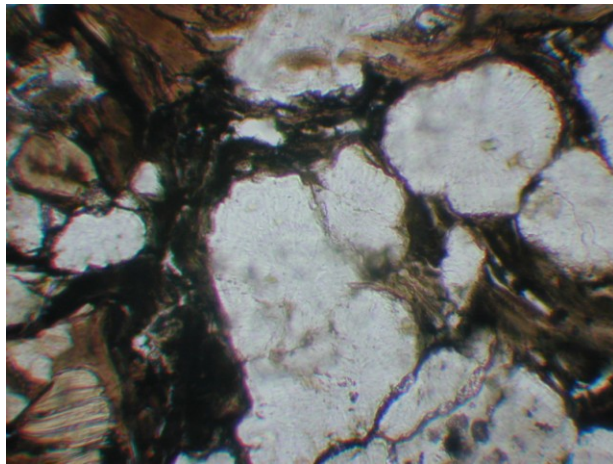
Sférolitická,  
porfyrická s holokrystalickou a hemikrystalickou z.h.



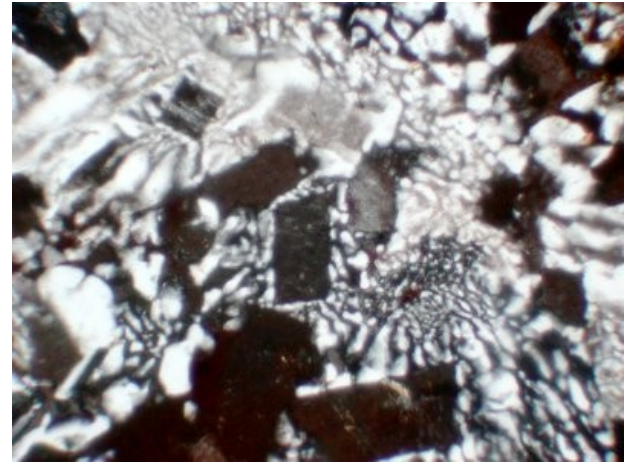
# Mikrostruktury kelyfytické – kolem granátu na styku plagioklasu s olivínem



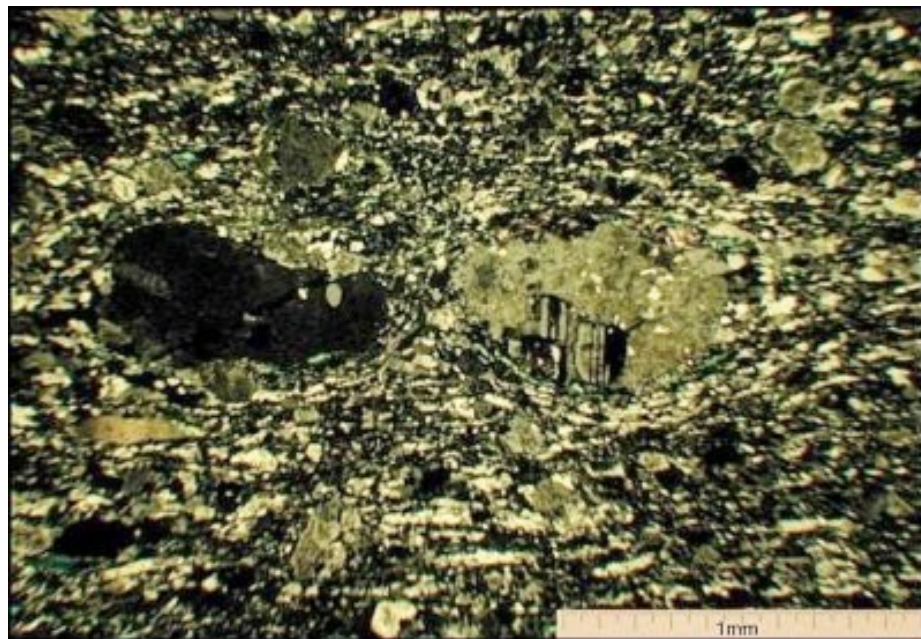
# Sférolitická mikrostruktura, smyčková, mřížovitá



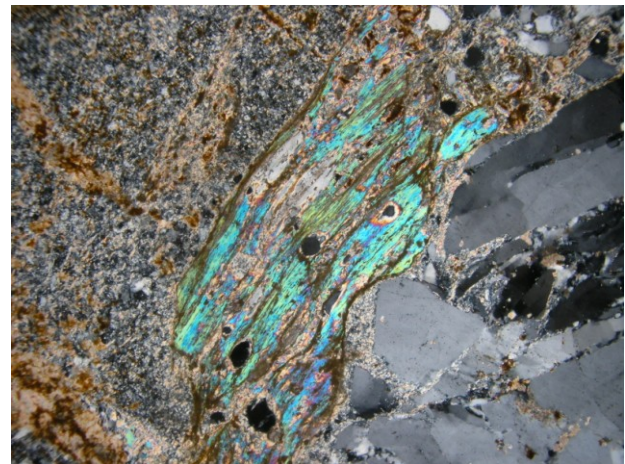
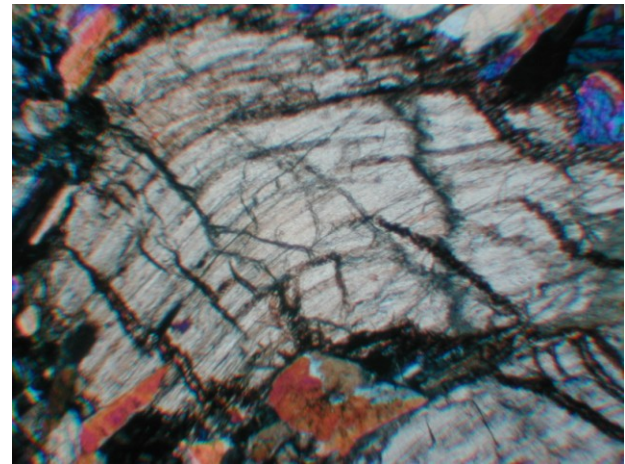
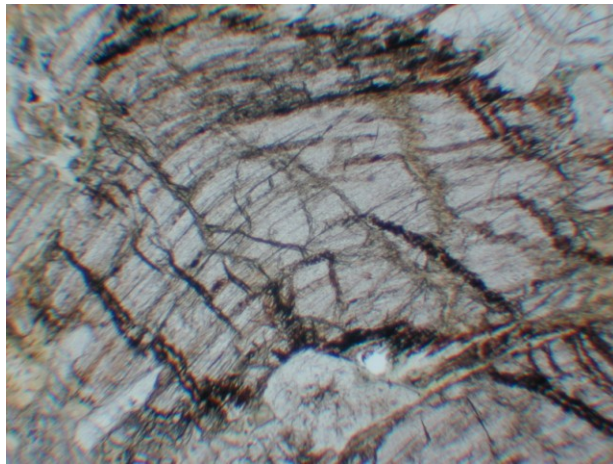
# Symplektity



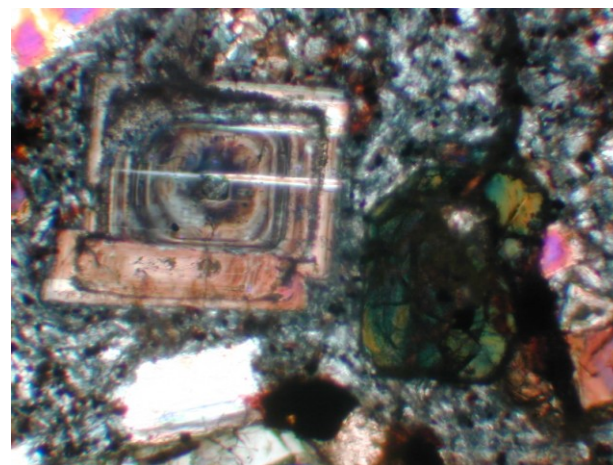
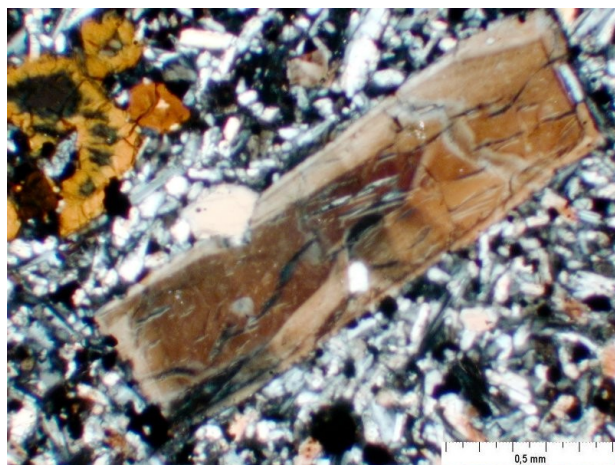
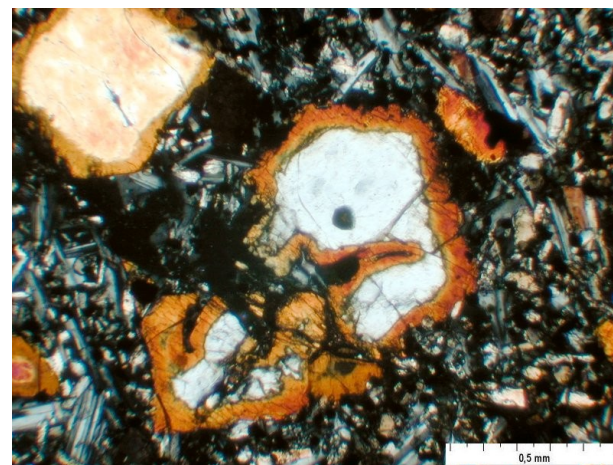
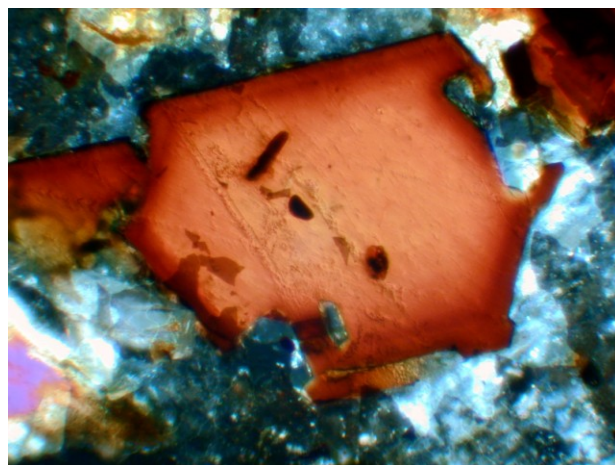
# Kataklastická (mylonit) – reliktní (uralitizované gabro)



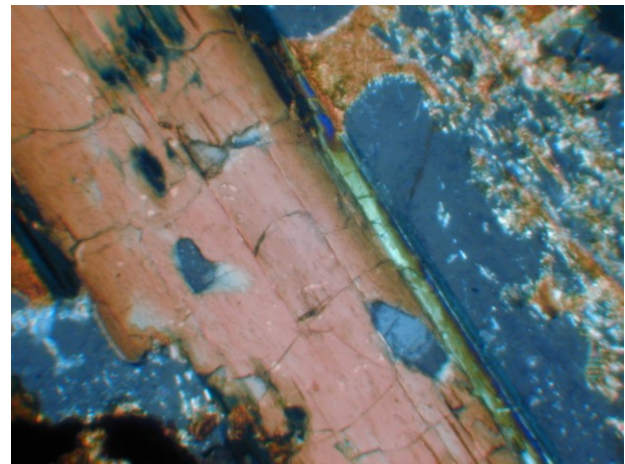
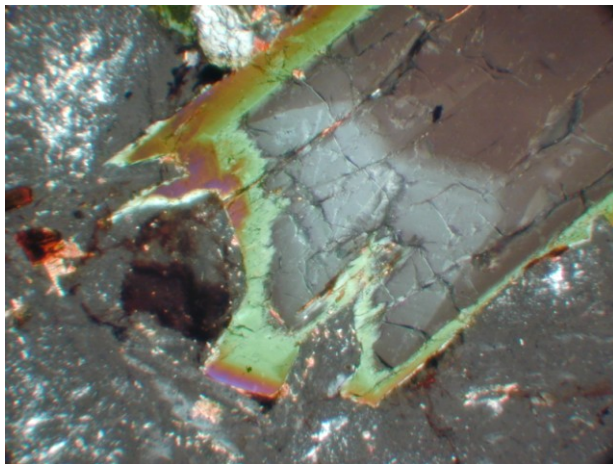
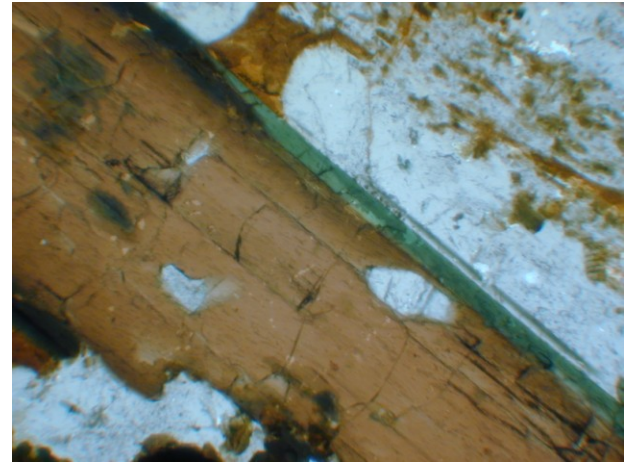
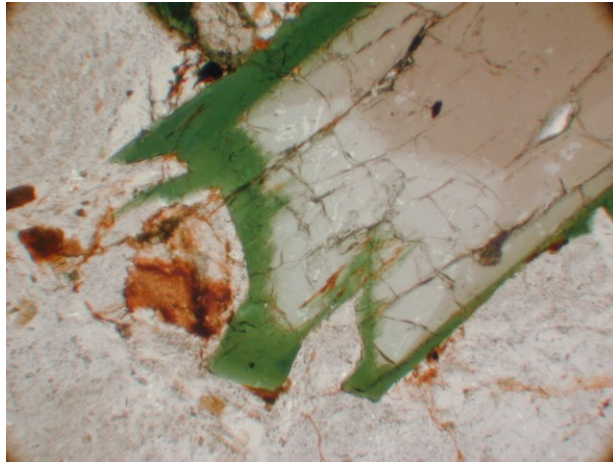
# Plastické deformace pyroxenu, přeměna živců, tlakové deformace slíd



# Magmatická koroze, sektorová zonálnost, osilační zonálnost



# Přeměny pyroxenu a amfibolu





# serpentinizace

