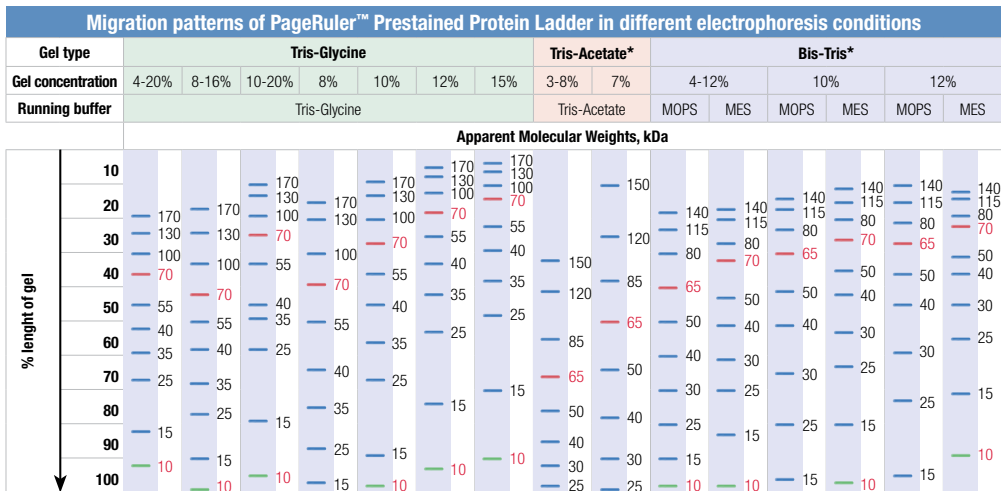




PageRuler™ Prestained Protein Ladder (10 – 170 kDa)

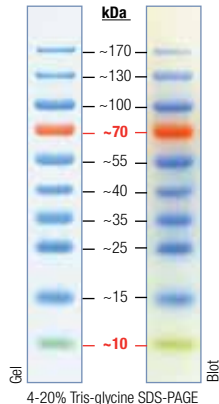


* Migration patterns were determined using respective NuPAGE® precast gels.

Note. The apparent molecular weight of each protein (kDa) has been determined by calibration against an unstained protein ladder in each electrophoresis conditions.

PageRuler™ Prestained Protein Ladder (10 – 170 kDa)

PageRuler™ Prestained Protein Ladder, #SM0671



Features

- **Sharp bands**
- **Stable colors**
- **Bright reference bands**
- **Broad range**
- **Ready-to-use** – supplied in a loading buffer for direct loading on gels

Applications

- Monitoring protein migration during SDS-polyacrylamide gel electrophoresis
- Monitoring protein transfer onto membranes after Western blotting
- Sizing of proteins on SDS-polyacrylamide gels and Western blots

Recommendations for Loading:

Step1: Thaw the Ladder either at room temperature or at 37°C for a few minutes to dissolve precipitated solids.

Step2: Mix gently, but thoroughly, to ensure that the solution is homogeneous.

Step3: Load on SDS-polyacrylamide gel
for mini-gels with a thickness of 0.75-1 mm: 5 µl/well*
for large gels with a thickness of 0.75-1 mm: 10 µl/well*

* For thicker gels, the loading volume should be increased.

Product	Cat. #	Amount	Applications		MW range, kDa	PageBlue™ staining (#R0571)	PageSilver™ staining (#K0681)
			mini-gels, 5 µl/well	large gels, 10 µl/well			
PageRuler™ Prestained Protein Ladder	SM0671	2x250 µl	100	50	10-170	compatible	compatible

LabAid™, PageBlue™, PageRuler™, PageSilver™ are Fermentas trademarks. NuPAGE® is registered trademark of Invitrogen Corporation.