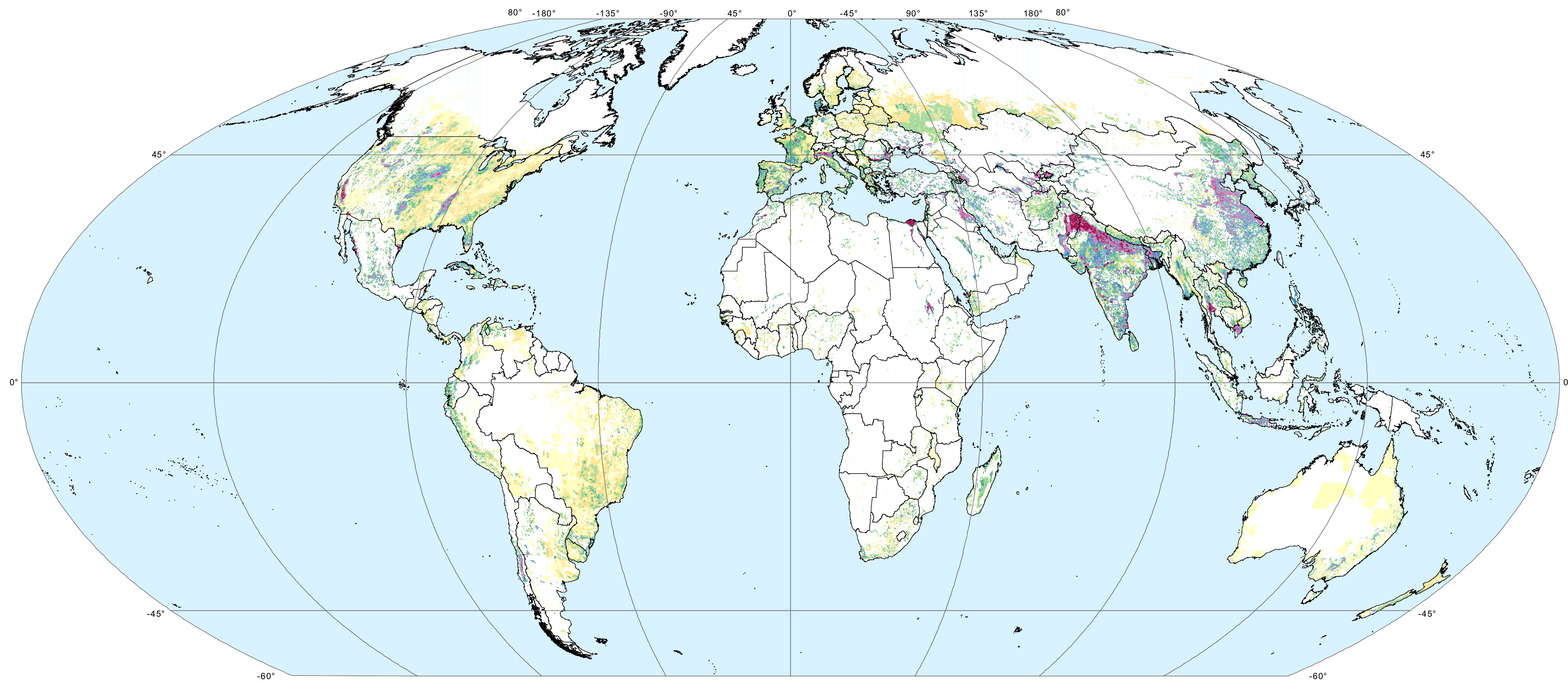
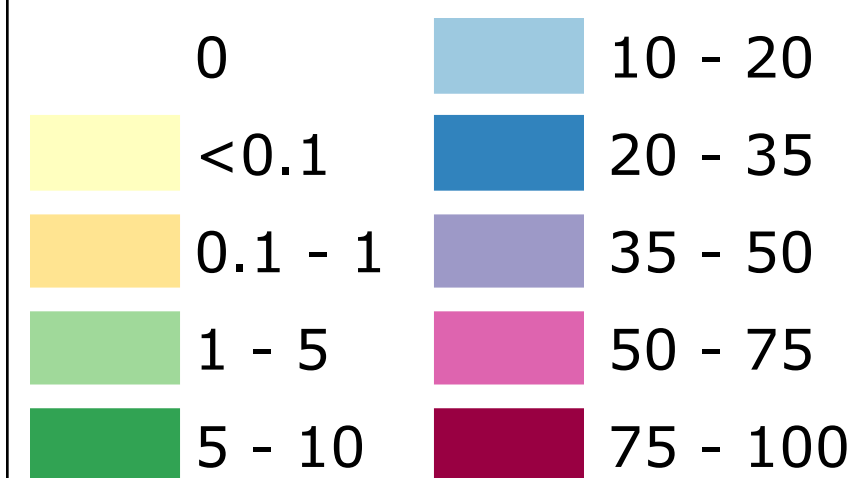


# The digital global map of irrigation areas

February, 2007



**Area under irrigation in percentage of land area**



The map depicts the area equipped for irrigation in percentage of cell area.  
For the majority of countries the base year of statistics is in the period 1997 - 2002.

Projection: Mollweide

<http://www.fao.org/ag/agl/aglw/aquastat/irrigationmap/index.stm>

Stefan Siebert, Petra Döll, Sebastian Feick (Institute of Physical Geography, University of Frankfurt/M., Germany) and  
Jippe Hoozeveld, Karen Frenken (Land and Water Development Division, Food and Agriculture Organization of the United Nations, Rome, Italy)

