

Images of Clay

<http://www.minersoc.org/pages/gallery/claypix/>

A joint initiative of the Clay Minerals Society and The Clay Minerals Group



[Return to Clay Minerals Society Home Page](#)

This archive of 'Images of Clay' is an ongoing project of the MinSoc's [Clay Minerals Group](#) and the [Clay Minerals Society](#) (USA). The idea behind this project is to build a collection of high quality images that are freely available to all to download for non-profit purposes, such as the teaching of clay mineralogy. Suitable images include electron micrographs of clay minerals, or indeed any image associated with the study of clay mineralogy.

Index to Images of Clay

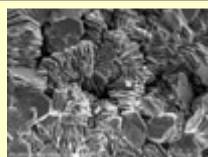
Click on image or caption to see a larger version with further details - including scale, origin of sample etc., and a link to a full-sized .jpg file



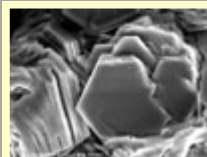
[Alunite](#)



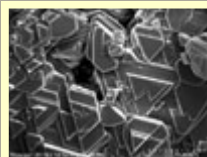
[Chlorite 1](#)
Fe rich



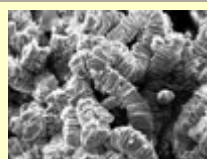
[Chlorite 2](#)
Fe rich



[Chlorite 3](#)
Fe rich



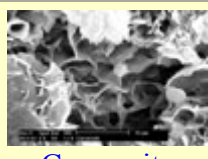
[Chlorite](#)
Fe-Al rich



[Chlorite](#)
Fe-Al rich,
vermiform



[Chlorite](#)
Mg rich



[Corrensite](#)



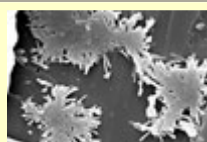
[Dickite](#)



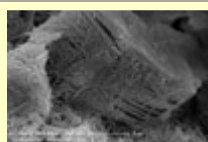
[Gibbsite](#)



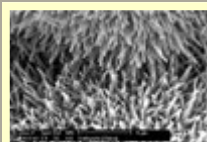
[Glauconite](#)



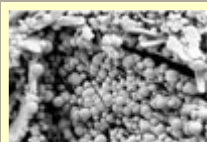
[Halloysite](#)
on K feldspar



[Halloysite](#)
on mica



[Halloysite](#)
tubular



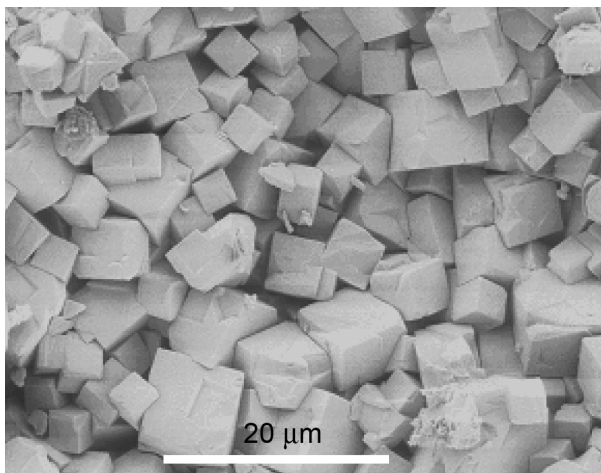
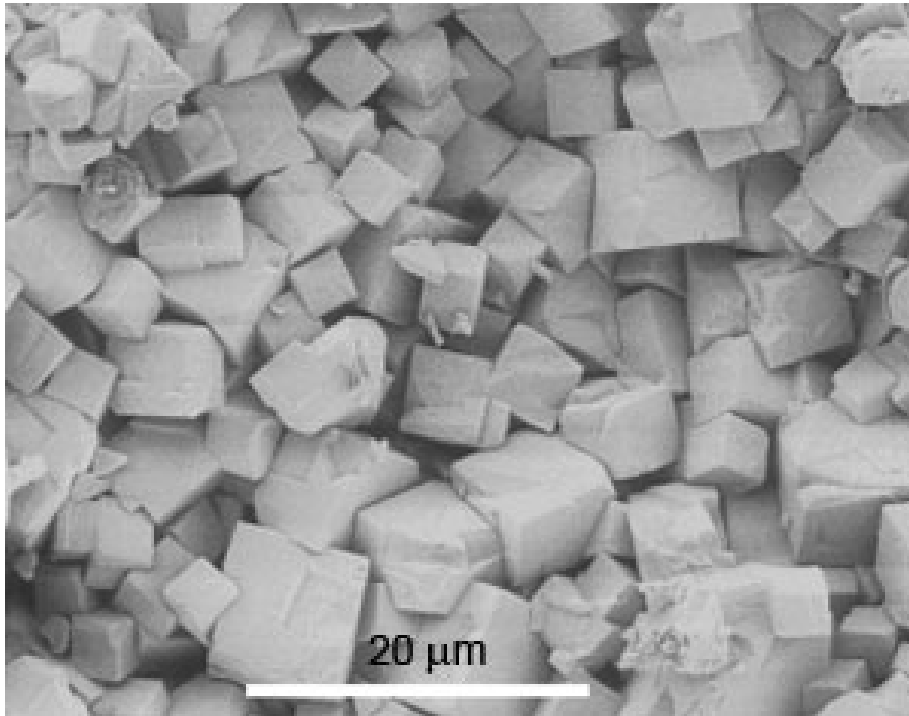
[Halloysite](#)
spheroidal



Anyone wishing to contribute images to this archive should e-mail them to Steve Hillier, at S.Hillier@macaulay.ac.uk or Ray Ferrell at rferrell@lsu.edu . Please also download and complete the [copyright form](#) (.pdf format) and send a hard copy, by post, to:

Dr Steve Hillier, Environmental Science Group, Macaulay Institute, Craigiebuckler, Aberdeen, AB15 8QH. Scotland.

Alunite From Turplu Mine, Balikesir, Turkey



Rhombohedral structure of alunites displaying casts of step growth features

Field of view approx. 52.0 microns wide

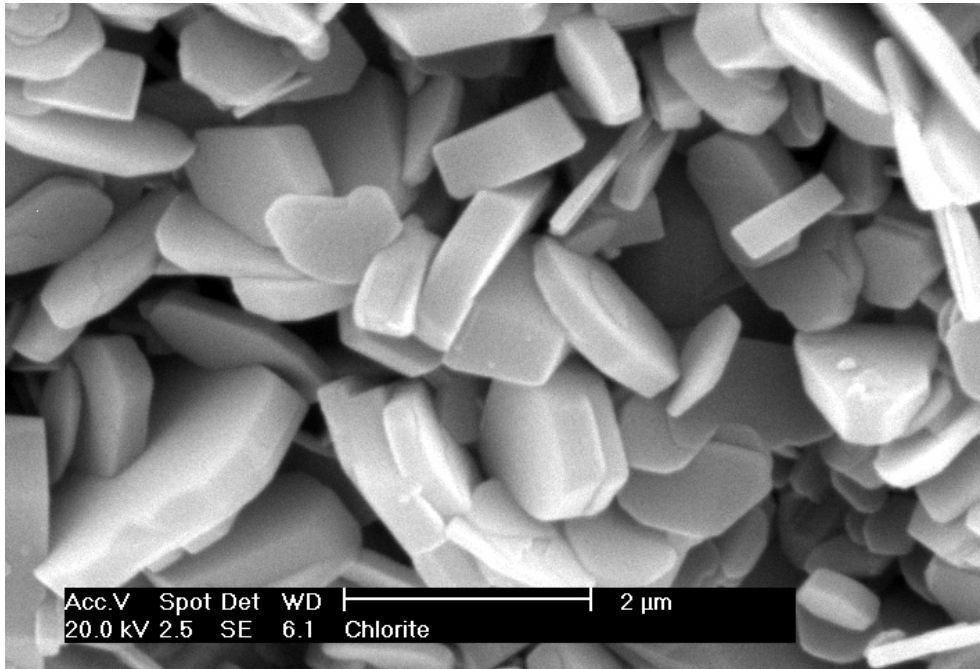
Photo courtesy Ömer Işık Ece, Istanbul Technical University

986 x 722 pixel file

(720 KB)

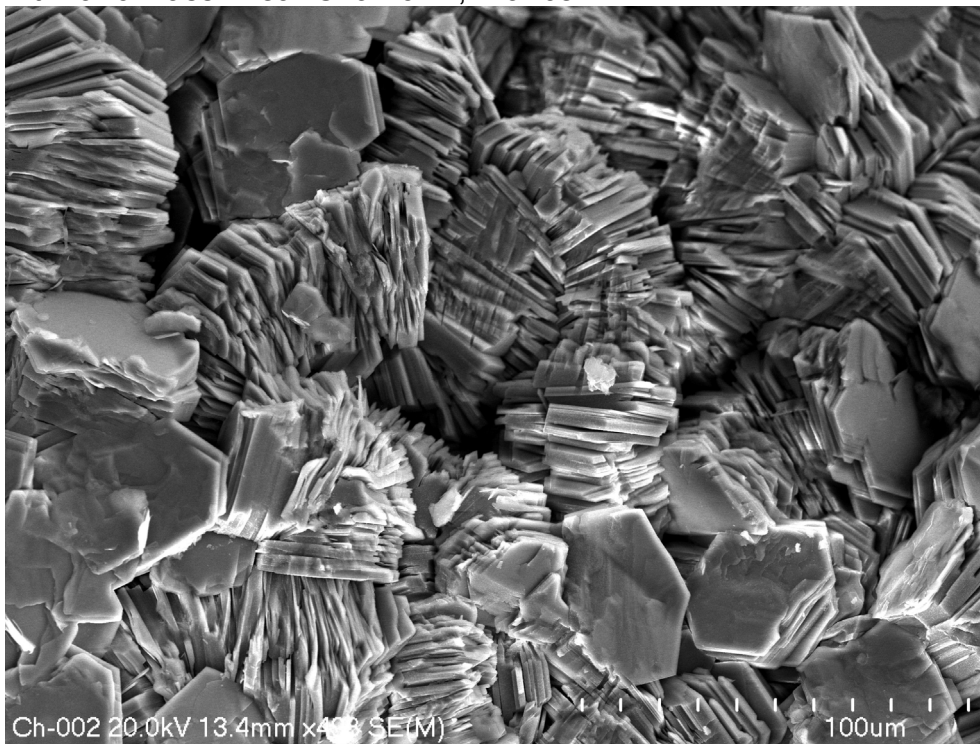
- opens in a new window

Chlorite 1 - Fe-rich chlorite, Spiro Sandstone, Arkoma Basin, Oklahoma, USA



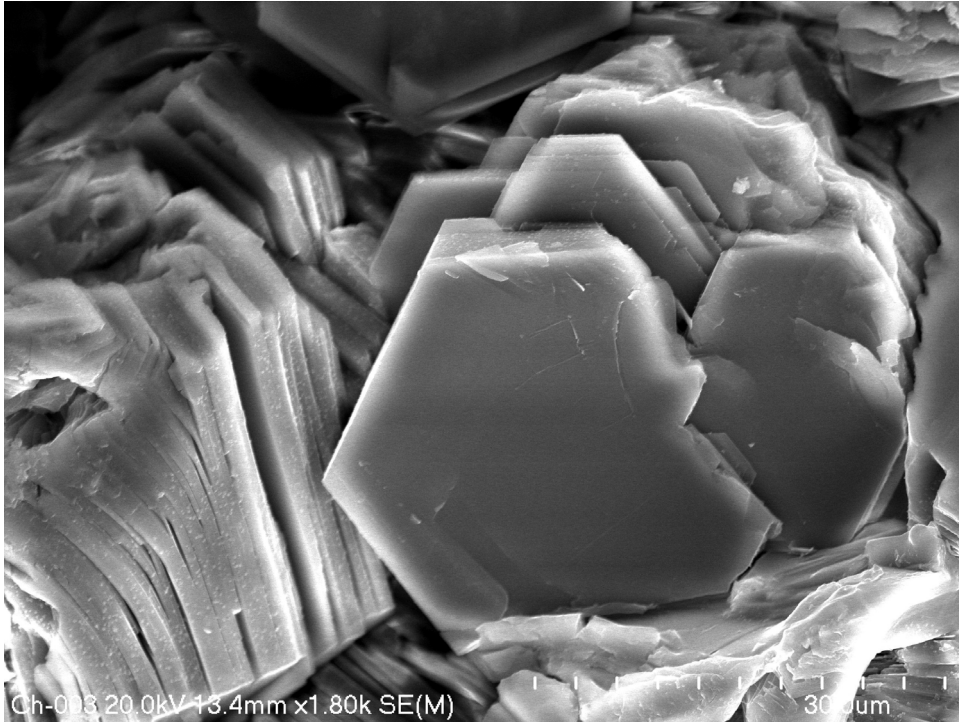
Field of view approx. 8 microns wide
(Photo courtesy of M. Roe, Macaulay Institute. Sample 'Chlo-28', Macaulay Colln., sample obtained from Christoph Spötl)

Chlorite 2 Fe-rich chlorite from alpine fissure collected within the Mt Blanc massif near Chamonix, France



Field of view approx. 250 microns wide
Photo courtesy Michal Skiba, Institute of Geological Sciences, Jagiellonian University, Kraków

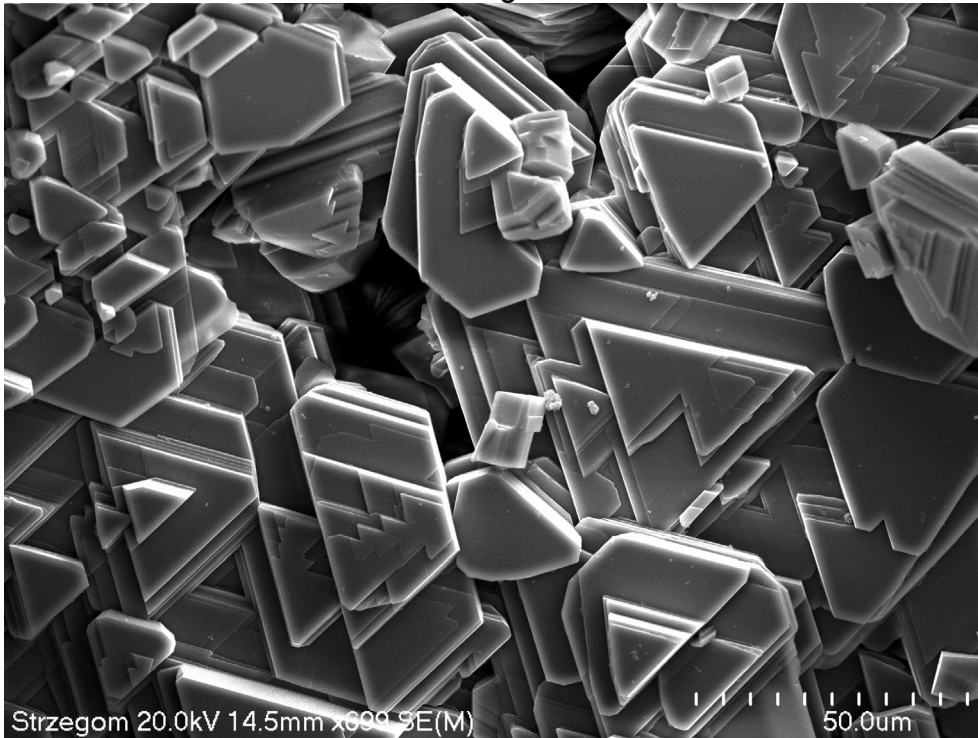
Chlorite 3 Fe-rich chlorite from alpine fissure collected within the Mt Blanc massif near Chamonix, France



Field of view approx. 70 microns wide

Photo courtesy Michal Skiba, Institute of Geological Sciences, Jagiellonian University, Kraków

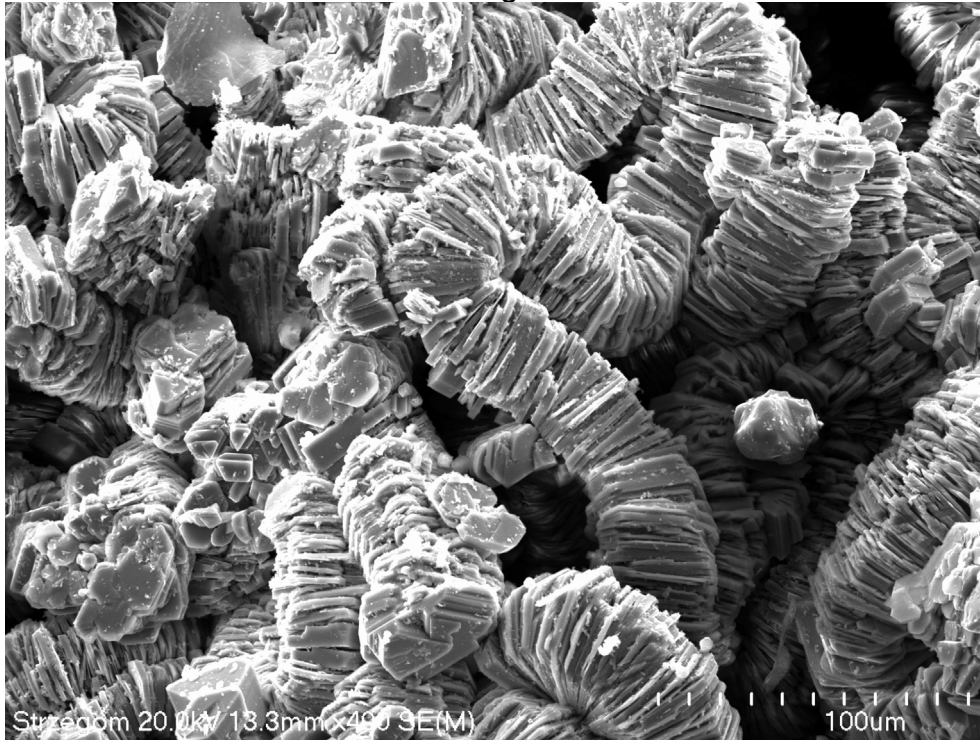
Chlorite Fe and Al rich chlorite from Strzegom pegmatite (Poland).
Local name for this mineral is strzegomite



Field of view approx. 180 microns wide Photo courtesy Michal Skiba, Institute of Geological Sciences, Jagiellonian University, Kraków

Chlorite Fe-Al rich, vermiform Fe and Al rich chlorite from Strzegom pegmatite (Poland).

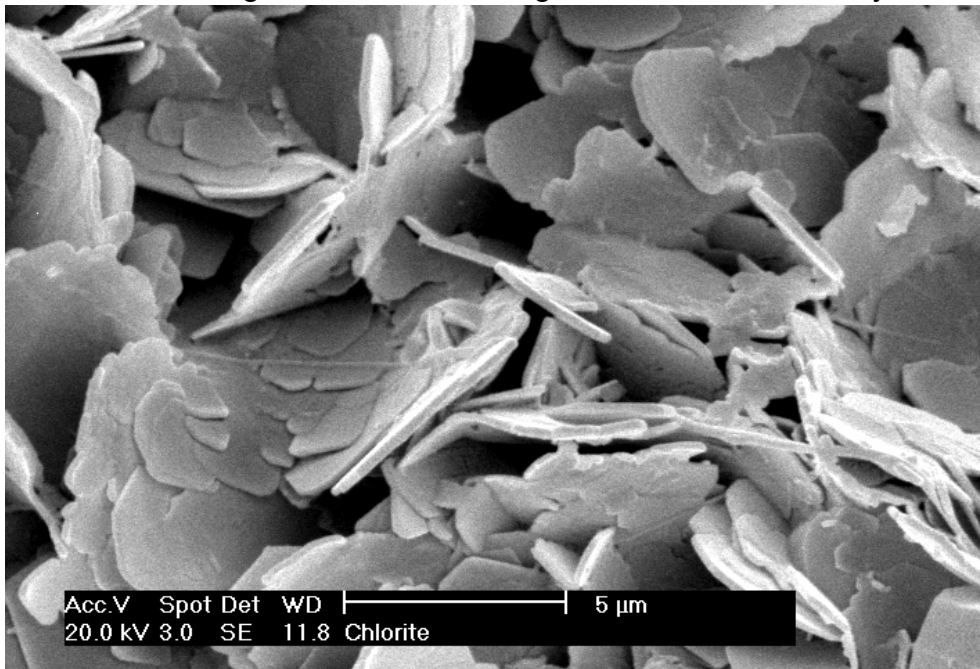
Local name for this mineral is strzegomite



Field of view approx. 315 microns wide

Photo courtesy Michal Skiba, Institute of Geological Sciences, Jagiellonian University, Kraków

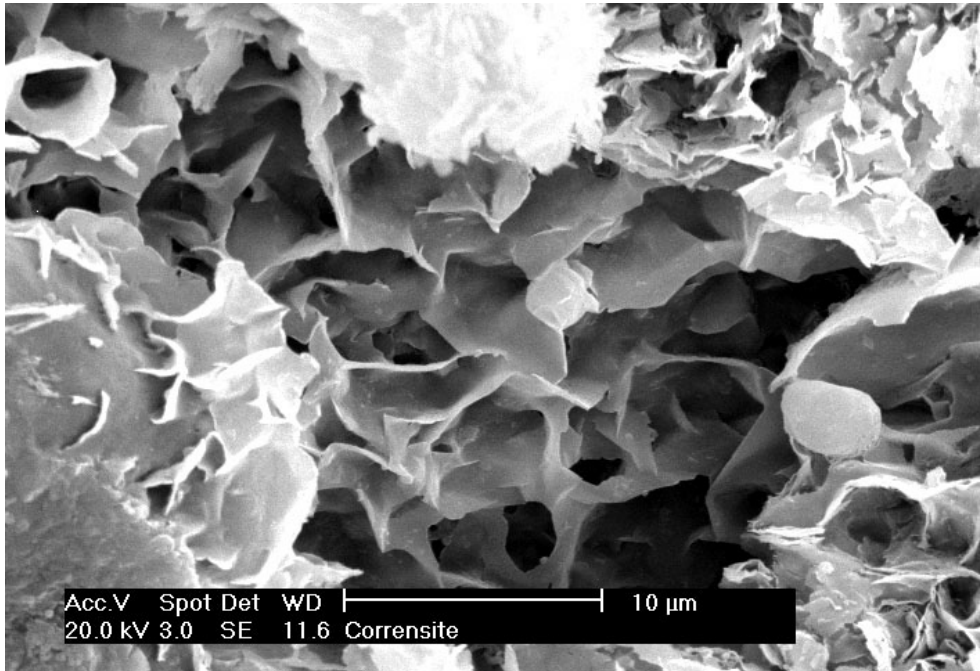
Chlorite - Mg-rich chlorite, Rotliegend, Northern Germany



Field of view approx. 23 microns wide

(Photo courtesy of M. Roe, Macaulay Institute. Sample 'Chlo-30', Macaulay Colln.)

Corrensite Permian, Yates Formation, Texas



Field of view approx. 42 microns wide

(Photo courtesy of M. Roe, Macaulay Institute. Sample 'Y2', Macaulay Colln.)