

Document Name: sk.1
 Plate Type: Standard Curve
 User: Student

Document Information

Operator: Administrator
 Run Date: Tuesday May 17 2016 11:11:50
 Last Modified: Tues May 17 2016 13:05:16
 Instrument Type: Applied Biosystems 7500 Real-Time PCR System

Comments:
 SDS v1.4

Thermal Cycler Profile

Stage	Repetitions	Temperature	Time	Ramp Rate
	1	50.0 °C		2:00
	2	95.0 °C	10:00	100
	3	95.0 °C	0:15	100
		60.0 °C	1:00	100

Standard 7500 Mode
 Data Collection : Stage 3 Step 2
 PCR Volume: 25 µL

Standard Curve Information

Detector Name	Slope	Intercept	R2	Number of Standards
CCND1	-3.367248	40.292183	0.995044	16
GAPDH_VIC	-3.404152	36.660984	0.997967	36

Well	Sample Name	Detector	Task	Ct
A1	CCND1	CCND1	Standard	22.4806
A1	CCND1	GAPDH_VIC	Standard	19.1771
A2	CCND1	CCND1	Standard	26.2301
A2	CCND1	GAPDH_VIC	Standard	22.1689
A3	CCND1	CCND1	Standard	29.8506
A3	CCND1	GAPDH_VIC	Standard	25.7964
A4	CCND1	CCND1	Standard	33.2285
A4	CCND1	GAPDH_VIC	Standard	29.2761
A5	CCND1	CCND1	Standard	36.5361
A5	CCND1	GAPDH_VIC	Standard	32.6891
A6	CCND1	CCND1	Standard	Undetermined
A6	CCND1	GAPDH_VIC	Standard	36.0633
A7	FOS	FOS	Standard	Undetermined
A7	FOS	GAPDH_VIC	Standard	19.0457
A8	FOS	FOS	Standard	Undetermined
A8	FOS	GAPDH_VIC	Standard	21.9628
A9	FOS	FOS	Standard	Undetermined
A9	FOS	GAPDH_VIC	Standard	25.7167
A10	FOS	FOS	Standard	Undetermined
A10	FOS	GAPDH_VIC	Standard	29.3319

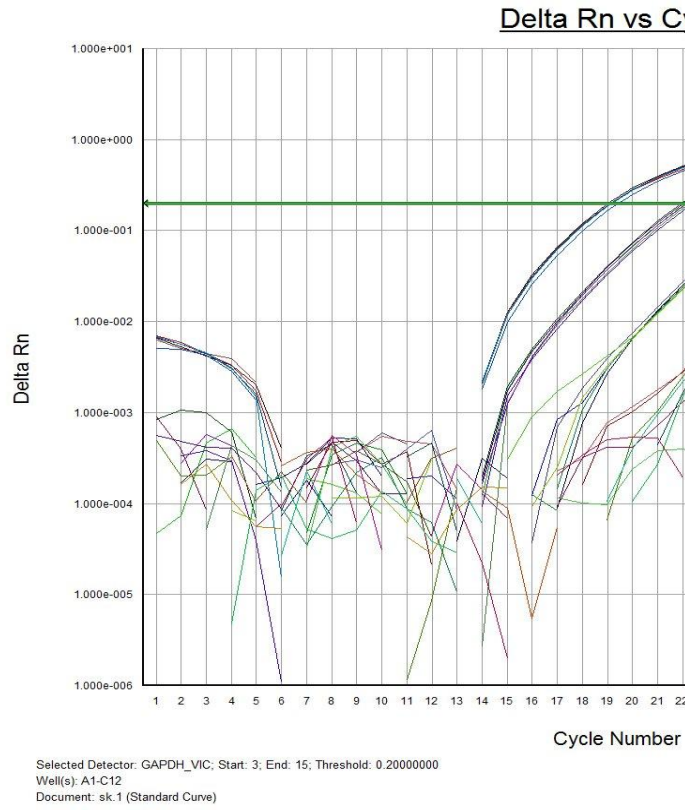
A11	FOS	FOS	Standard	Undetermined
A11	FOS	GAPDH_VIC	Standard	32.9755
A12	FOS	FOS	Standard	Undetermined
A12	FOS	GAPDH_VIC	Standard	37.0459
B1	CCND1	CCND1	Standard	22.4691
B1	CCND1	GAPDH_VIC	Standard	19.1223
B2	CCND1	CCND1	Standard	26.2768
B2	CCND1	GAPDH_VIC	Standard	22.2761
B3	CCND1	CCND1	Standard	29.546
B3	CCND1	GAPDH_VIC	Standard	25.7149
B4	CCND1	CCND1	Standard	33.2655
B4	CCND1	GAPDH_VIC	Standard	29.2897
B5	CCND1	CCND1	Standard	36.1893
B5	CCND1	GAPDH_VIC	Standard	32.8098
B6	CCND1	CCND1	Standard	Undetermined
B6	CCND1	GAPDH_VIC	Standard	36.3063
B7	FOS	FOS	Standard	Undetermined
B7	FOS	GAPDH_VIC	Standard	19.1185
B8	FOS	FOS	Standard	Undetermined
B8	FOS	GAPDH_VIC	Standard	22.0305
B9	FOS	FOS	Standard	Undetermined
B9	FOS	GAPDH_VIC	Standard	25.8993
B10	FOS	FOS	Standard	Undetermined
B10	FOS	GAPDH_VIC	Standard	29.4035
B11	FOS	FOS	Standard	Undetermined
B11	FOS	GAPDH_VIC	Standard	32.1342
B12	FOS	FOS	Standard	Undetermined
B12	FOS	GAPDH_VIC	Standard	36.659
C1	CCND1	CCND1	Standard	22.6627
C1	CCND1	GAPDH_VIC	Standard	19.4312
C2	CCND1	CCND1	Standard	26.3222
C2	CCND1	GAPDH_VIC	Standard	22.3927
C3	CCND1	CCND1	Standard	29.9768
C3	CCND1	GAPDH_VIC	Standard	26.0349
C4	CCND1	CCND1	Standard	33.4683
C4	CCND1	GAPDH_VIC	Standard	29.5394
C5	CCND1	CCND1	Standard	36.5321
C5	CCND1	GAPDH_VIC	Standard	32.8287
C6	CCND1	CCND1	Standard	39.2198
C6	CCND1	GAPDH_VIC	Standard	36.3923
C7	FOS	FOS	Standard	Undetermined
C7	FOS	GAPDH_VIC	Standard	19.1642
C8	FOS	FOS	Standard	Undetermined
C8	FOS	GAPDH_VIC	Standard	22.1297
C9	FOS	FOS	Standard	Undetermined
C9	FOS	GAPDH_VIC	Standard	25.9549
C10	FOS	FOS	Standard	Undetermined
C10	FOS	GAPDH_VIC	Standard	29.5869
C11	FOS	FOS	Standard	Undetermined
C11	FOS	GAPDH_VIC	Standard	33.2499

C12	FOS	FOS	Standard	Undetermined
C12	FOS	GAPDH_VIC	Standard	36.7203
D1	20 % FBS	CCND1	Unknown	27.0304
D2	20 % FBS	CCND1	Unknown	27.1924
D3	20 % FBS	CCND1	Unknown	27.2013
D4	bez FBS	CCND1	Unknown	28.0167
D5	bez FBS	CCND1	Unknown	27.9617
D6	bez FBS	CCND1	Unknown	27.9128
D9	noRT	CCND1	Unknown	Undetermined
D9	noRT	GAPDH_VIC	Unknown	Undetermined
D10	noRT	FOS	Unknown	Undetermined
D10	noRT	GAPDH_VIC	Unknown	Undetermined
D11	NK	CCND1	Unknown	Undetermined
D11	NK	GAPDH_VIC	Unknown	Undetermined
D12	NK	FOS	Unknown	Undetermined
D12	NK	GAPDH_VIC	Unknown	Undetermined
E1	20 % FBS	FOS	Unknown	Undetermined
E2	20 % FBS	FOS	Unknown	Undetermined
E3	20 % FBS	FOS	Unknown	Undetermined
E4	bez FBS	FOS	Unknown	Undetermined
E5	bez FBS	FOS	Unknown	Undetermined
E6	bez FBS	FOS	Unknown	Undetermined
E9	noRT	CCND1	Unknown	Undetermined
E9	noRT	GAPDH_VIC	Unknown	Undetermined
E10	noRT	FOS	Unknown	Undetermined
E10	noRT	GAPDH_VIC	Unknown	Undetermined
E11	NK	CCND1	Unknown	Undetermined
E11	NK	GAPDH_VIC	Unknown	Undetermined
E12	NK	FOS	Unknown	Undetermined
E12	NK	GAPDH_VIC	Unknown	Undetermined
F1	20 % FBS	GAPDH	Unknown	21.2632
F2	20 % FBS	GAPDH	Unknown	21.3701
F3	20 % FBS	GAPDH	Unknown	21.3485
F4	bez FBS	GAPDH	Unknown	21.8278
F5	bez FBS	GAPDH	Unknown	21.8054
F6	bez FBS	GAPDH	Unknown	21.6744
G1	20 % FBS	CCND1	Unknown	26.7425
G1	20 % FBS	GAPDH_VIC	Unknown	23.4736
G2	20 % FBS	CCND1	Unknown	26.8596
G2	20 % FBS	GAPDH_VIC	Unknown	23.477
G3	20 % FBS	CCND1	Unknown	26.7647
G3	20 % FBS	GAPDH_VIC	Unknown	23.36
G4	bez FBS	CCND1	Unknown	27.5215
G4	bez FBS	GAPDH_VIC	Unknown	23.9195
G5	bez FBS	CCND1	Unknown	27.5213
G5	bez FBS	GAPDH_VIC	Unknown	23.8862
G6	bez FBS	CCND1	Unknown	27.6722
G6	bez FBS	GAPDH_VIC	Unknown	23.8818
G7	1 ul EtOH	CCND1	Unknown	27.7152
G7	1 ul EtOH	GAPDH_VIC	Unknown	24.8987

G8	1 ul EtOH	CCND1	Unknown	28.5036
G8	1 ul EtOH	GAPDH_VIC	Unknown	26.3069
G9	1 ul EtOH	CCND1	Unknown	28.4017
G9	1 ul EtOH	GAPDH_VIC	Unknown	26.5516
G10	1 ul EtOH	FOS	Unknown	Undetermined
G10	1 ul EtOH	GAPDH_VIC	Unknown	26.7852
G11	1 ul EtOH	FOS	Unknown	Undetermined
G11	1 ul EtOH	GAPDH_VIC	Unknown	26.3738
G12	1 ul EtOH	FOS	Unknown	Undetermined
G12	1 ul EtOH	GAPDH_VIC	Unknown	26.4682
H1	20 % FBS	FOS	Unknown	Undetermined
H1	20 % FBS	GAPDH_VIC	Unknown	23.0579
H2	20 % FBS	FOS	Unknown	Undetermined
H2	20 % FBS	GAPDH_VIC	Unknown	23.4328
H3	20 % FBS	FOS	Unknown	Undetermined
H3	20 % FBS	GAPDH_VIC	Unknown	23.3075
H4	bez FBS	FOS	Unknown	Undetermined
H4	bez FBS	GAPDH_VIC	Unknown	23.8761
H5	bez FBS	FOS	Unknown	Undetermined
H5	bez FBS	GAPDH_VIC	Unknown	23.7271
H6	bez FBS	FOS	Unknown	Undetermined
H6	bez FBS	GAPDH_VIC	Unknown	23.8236
H7	2 ul EtOH	CCND1	Unknown	Undetermined
H7	2 ul EtOH	GAPDH_VIC	Unknown	Undetermined
H8	2 ul EtOH	CCND1	Unknown	Undetermined
H8	2 ul EtOH	GAPDH_VIC	Unknown	Undetermined
H9	2 ul EtOH	CCND1	Unknown	Undetermined
H9	2 ul EtOH	GAPDH_VIC	Unknown	Undetermined
H10	2 ul EtOH	FOS	Unknown	Undetermined
H10	2 ul EtOH	GAPDH_VIC	Unknown	Undetermined
H11	2 ul EtOH	FOS	Unknown	Undetermined
H11	2 ul EtOH	GAPDH_VIC	Unknown	Undetermined
H12	2 ul EtOH	FOS	Unknown	Undetermined
H12	2 ul EtOH	GAPDH_VIC	Unknown	Undetermined

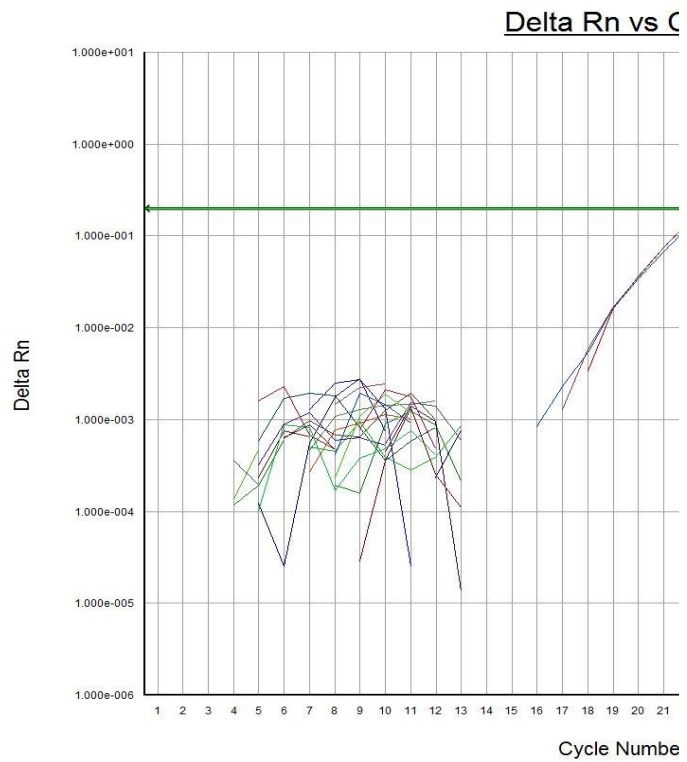
Kalibrační křivky

GAPDH



	Qty
	150
	150
	15
	15
	1.5
	1.5
	0.15
	0.15
	0.015
	0.015
	0.0015
	0.0015
	150
	150
	15
	15
	1.5
	1.5
	0.15
	0.15

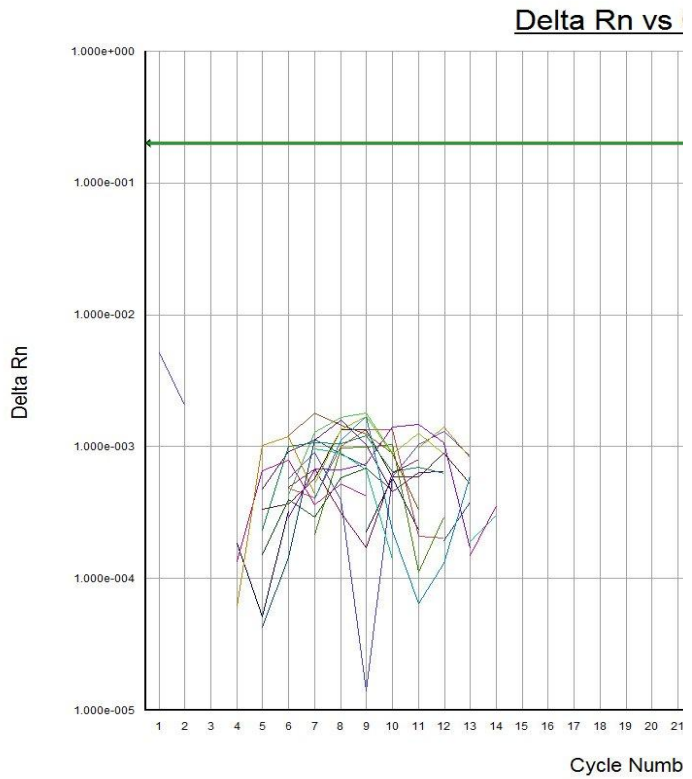
CCND1



	0.015
	0.015
	0.0015
	0.0015
	150
	150
	15
	15
	1.5
	1.5
	0.15
	0.15
	0.015
	0.015
	0.0015
	0.0015
	150
	150
	15
	15
	1.5
	1.5
	0.15
	0.15
	0.015
	0.015
	0.0015
	0.0015
	150
	150
	15
	15
	1.5
	1.5
	0.15
	0.15
	0.015
	0.015
	0.0015
	0.0015
	150
	150
	15
	15
	1.5
	1.5
	0.15
	0.15
	0.015
	0.015

Selected Detector: CCND1; Start: 3; End: 15; Threshold: 0.20000000
Well(s): A1-A6,B1-B6,C1-C6
Document: sk.1 (Standard Curve)

FOS

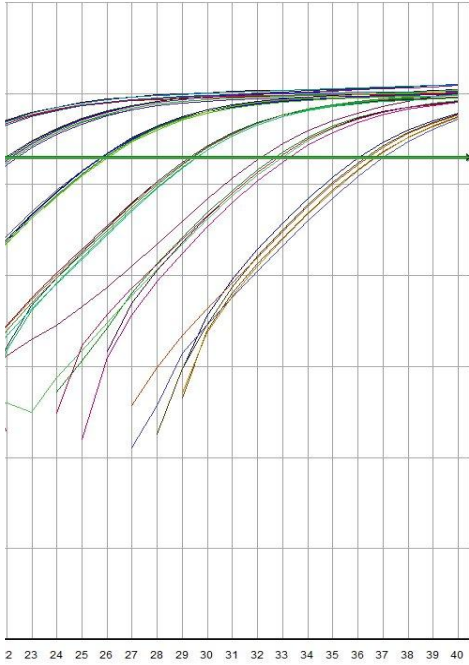


Selected Detector: FOS; Start: 3; End: 15; Threshold: 0.20000000
Well(s): A7-A12,B7-B12,C7-C12
Document: sk.1 (Standard Curve)

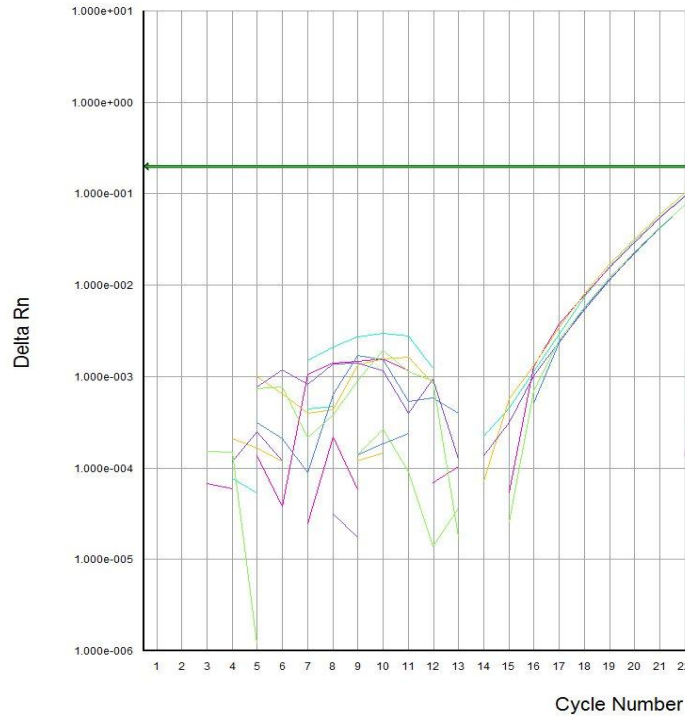
Relativní kvantifikace - duplex

20 % FBS vs. no FBS CCND1 a GAPDH

ycle



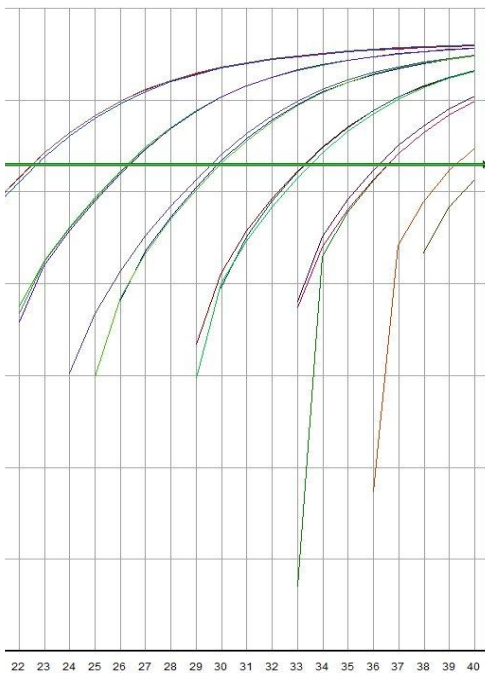
Delta Rn vs C



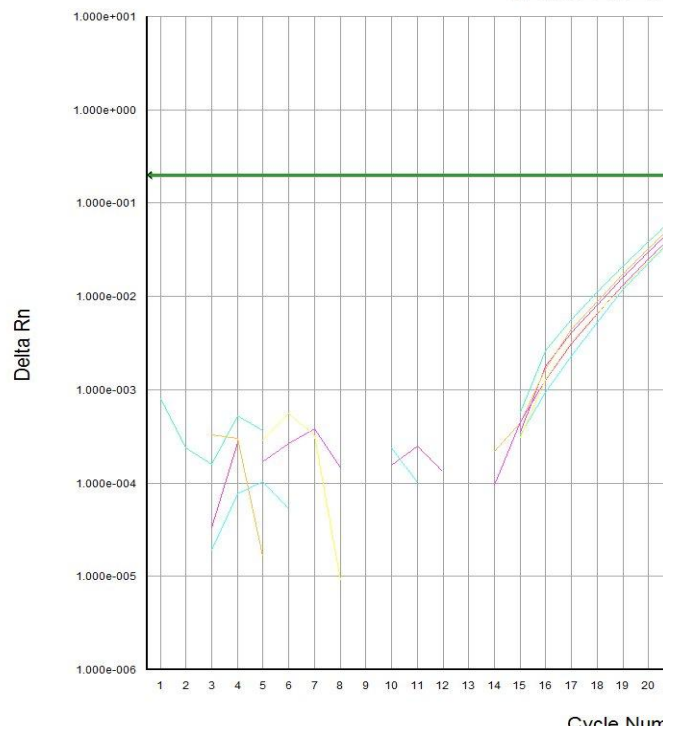
Selected Detector: All
Well(s): G1-G6
Document: sk.1 (Standard Curve)

20 % FBS vs. no FBS FOS a GAPDH

Cycle



Delta Rn vs



Selected Detector: GAPDH_VIC; Start: 3; End: 15; Threshold: 0.20000000
Well(s): H1-H6
Document: sk.1 (Standard Curve)

Relativní kvantifikace - singlelex

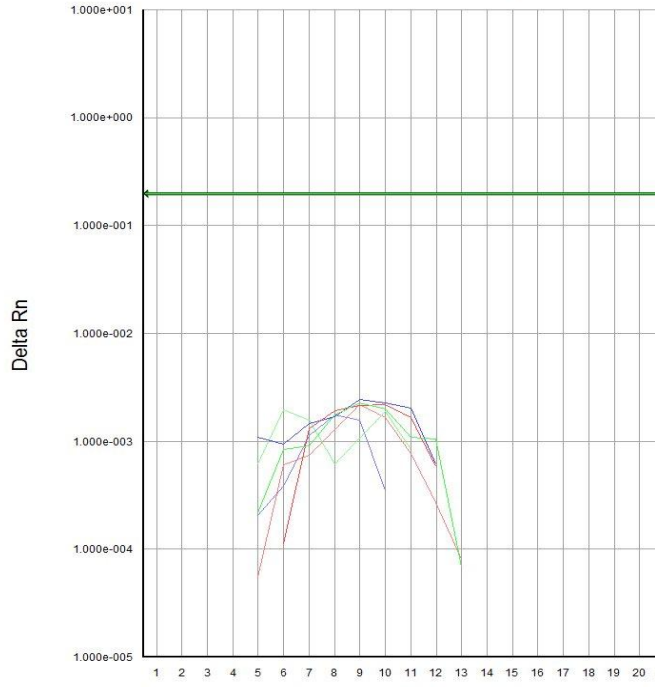
20 % FBS vs. no FBS CCND1

Cycle



er

Delta Rn vs

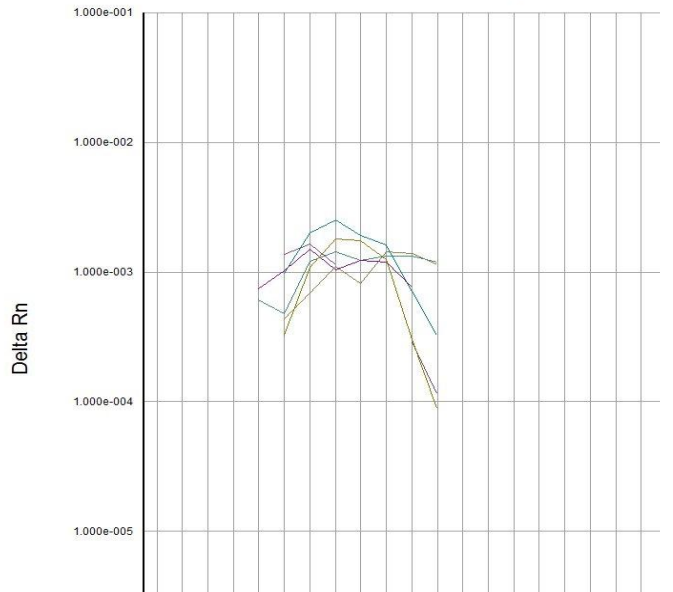


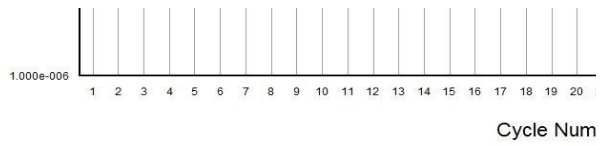
Cycle Num

Selected Detector: All
Well(s): D1-D6
Document: sk.1 (Standard Curve)

20 % FBS vs. no FBS FOS

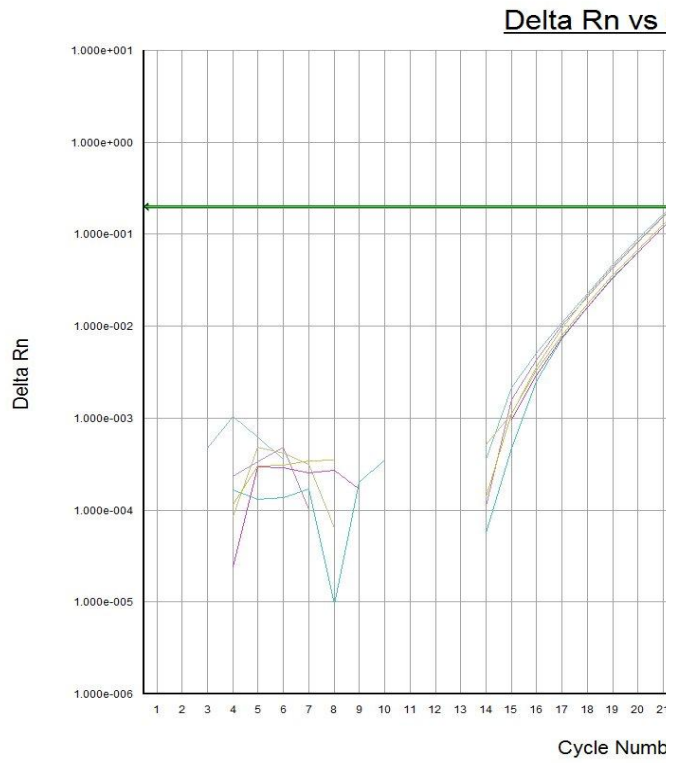
Delta Rn vs





Selected Detector: All
 Well(s): E1-E6
 Document: sk.1 (Standard Curve)

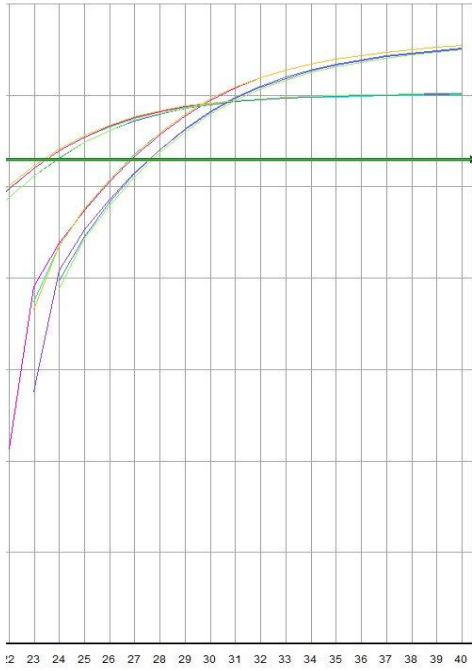
20 % FBS vs. no FBS GAPDH-FAM



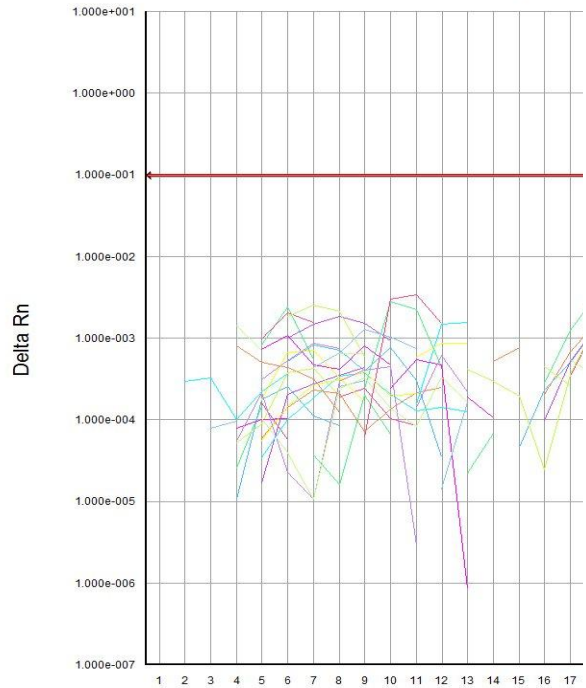
Selected Detector: All
 Well(s): F1-F6
 Document: sk.1 (Standard Curve)

Vliv inhibitorů

ycle



Delta



C:

Selected Detector: All
Well(s): G7-G12,H7-H12
Document: sk.1 (Standard Curve)

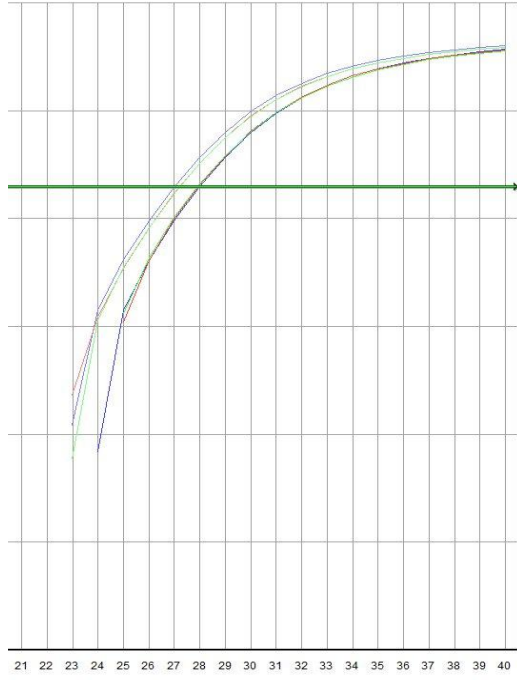
s Cycle



ber

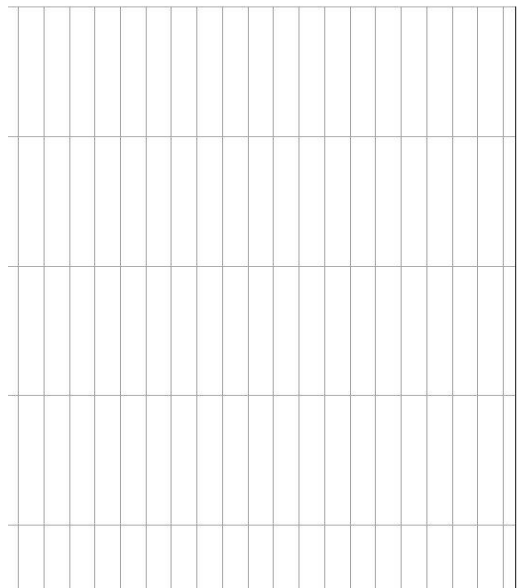
number

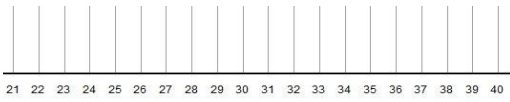
3 Cycle



number

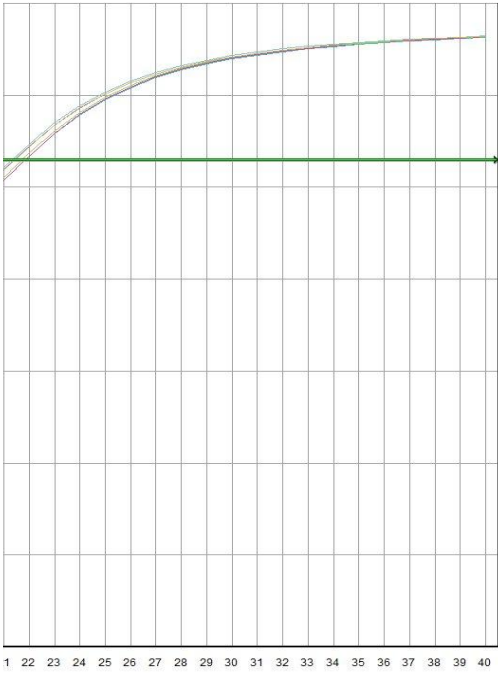
3 Cycle





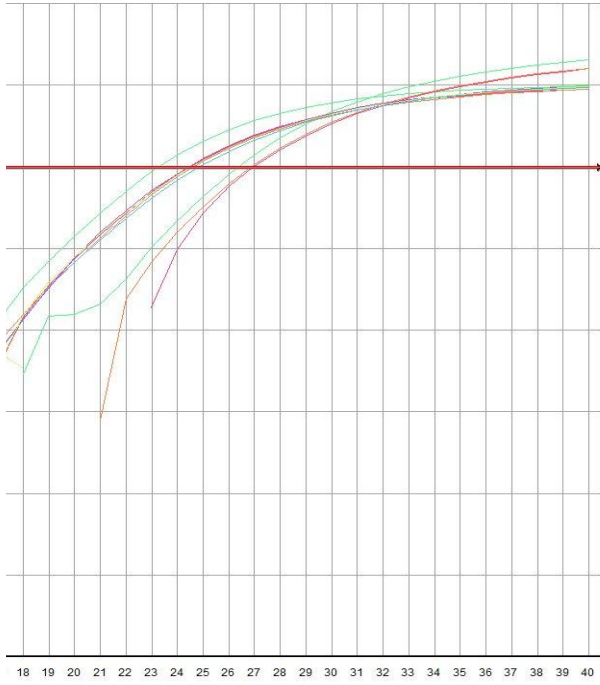
ber

Cycle



ber

Rn vs Cycle



ycle Number

Document Name: Skupina 2
 Plate Type: Standard Curve
 User: Student

Document Information

Operator: Administrator
 Run Date: Tuesday May 17 2016 15:16:59
 Last Modified: Tue: May 17 2016 16:41:44
 Instrument Type: Applied Biosystems 7500 Real-Time PCR System

Comments:
 SDS v1.4

Thermal Cycler Profile

Stage	Repetitions	Temperature	Time	Ramp Rate
	1	1 50.0 °C		2:00 100
	2	1 95.0 °C		10:00 100
	3	40 95.0 °C		0:15 100
		60.0 °C		1:00 100

Standard 7500 Mode
 Data Collection : Stage 3 Step 2
 PCR Volume: 25 µL

Standard Curve Information

Detector Name	Slope	Intercept	R2	Number of Standar
CDK4	-3.407207	40.353374	0.982914	16
GAPDH_VIC	-3.091311	38.382717	0.947460	35
CCND2	-3.016829	37.221371	0.967059	18

Well	Sample Name	Detector	Task	Ct
A1	CDK4	CDK4	Standard	22.665
A1	CDK4	GAPDH_VIC	Standard	21.4199
A2	CDK4	CDK4	Standard	26.0398
A2	CDK4	GAPDH_VIC	Standard	24.8129
A3	CDK4	CDK4	Standard	29.3405
A3	CDK4	GAPDH_VIC	Standard	28.281
A4	CDK4	CDK4	Standard	33.3199
A4	CDK4	GAPDH_VIC	Standard	32.0276
A5	CDK4	CDK4	Standard	37.3546
A5	CDK4	GAPDH_VIC	Standard	35.8448
A6	CDK4	CDK4	Standard	Undetermined
A6	CDK4	GAPDH_VIC	Standard	39.5989
A7	CCND2	CCND2	Standard	20.9429
A7	CCND2	GAPDH_VIC	Standard	22.3339
A8	CCND2	CCND2	Standard	24.2358
A8	CCND2	GAPDH_VIC	Standard	25.4855
A9	CCND2	CCND2	Standard	27.8622
A9	CCND2	GAPDH_VIC	Standard	29.1169
A10	CCND2	CCND2	Standard	31.514

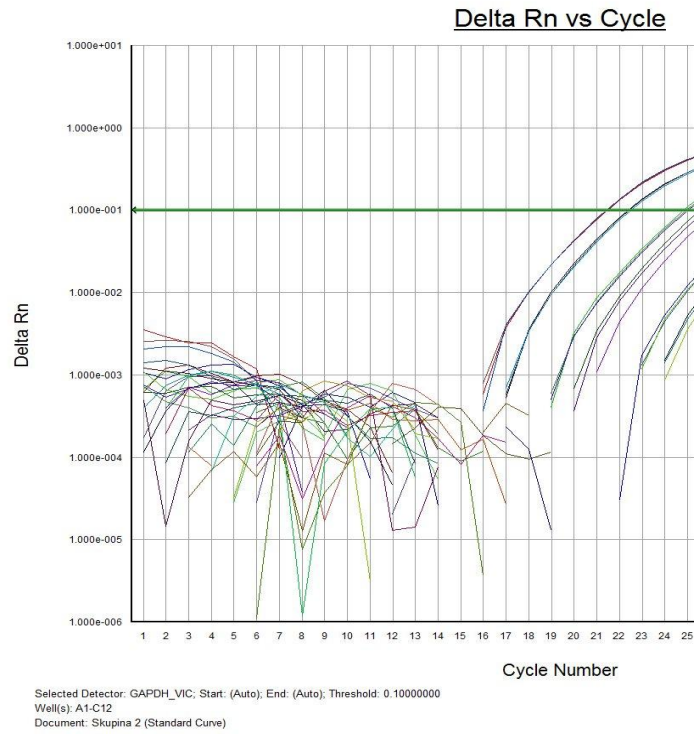
A10	CCND2	GAPDH_VIC	Standard	32.4865
A11	CCND2	CCND2	Standard	34.8769
A11	CCND2	GAPDH_VIC	Standard	34.751
A12	CCND2	CCND2	Standard	35.351
A12	CCND2	GAPDH_VIC	Standard	34.7154
B1	CDK4	CDK4	Standard	22.5856
B1	CDK4	GAPDH_VIC	Standard	21.3815
B2	CDK4	CDK4	Standard	26.0939
B2	CDK4	GAPDH_VIC	Standard	24.9349
B3	CDK4	CDK4	Standard	29.456
B3	CDK4	GAPDH_VIC	Standard	28.4204
B4	CDK4	CDK4	Standard	33.3287
B4	CDK4	GAPDH_VIC	Standard	32.2399
B5	CDK4	CDK4	Standard	37.4228
B5	CDK4	GAPDH_VIC	Standard	36.1712
B6	CDK4	CDK4	Standard	37.5216
B6	CDK4	GAPDH_VIC	Standard	Undetermined
B7	CCND2	CCND2	Standard	21.0378
B7	CCND2	GAPDH_VIC	Standard	22.3786
B8	CCND2	CCND2	Standard	24.3462
B8	CCND2	GAPDH_VIC	Standard	25.7679
B9	CCND2	CCND2	Standard	27.9105
B9	CCND2	GAPDH_VIC	Standard	29.2225
B10	CCND2	CCND2	Standard	31.3845
B10	CCND2	GAPDH_VIC	Standard	32.7147
B11	CCND2	CCND2	Standard	35.1516
B11	CCND2	GAPDH_VIC	Standard	34.3437
B12	CCND2	CCND2	Standard	35.223
B12	CCND2	GAPDH_VIC	Standard	34.679
C1	CDK4	CDK4	Standard	22.4748
C1	CDK4	GAPDH_VIC	Standard	21.3485
C2	CDK4	CDK4	Standard	26.0963
C2	CDK4	GAPDH_VIC	Standard	25.0044
C3	CDK4	CDK4	Standard	29.3708
C3	CDK4	GAPDH_VIC	Standard	28.4204
C4	CDK4	CDK4	Standard	32.9307
C4	CDK4	GAPDH_VIC	Standard	32.2891
C5	CDK4	CDK4	Standard	36.729
C5	CDK4	GAPDH_VIC	Standard	35.6028
C6	CDK4	CDK4	Standard	Undetermined
C6	CDK4	GAPDH_VIC	Standard	39.811
C7	CCND2	CCND2	Standard	21
C7	CCND2	GAPDH_VIC	Standard	22.4595
C8	CCND2	CCND2	Standard	24.6767
C8	CCND2	GAPDH_VIC	Standard	26.2081
C9	CCND2	CCND2	Standard	27.9771
C9	CCND2	GAPDH_VIC	Standard	29.4567
C10	CCND2	CCND2	Standard	31.8735
C10	CCND2	GAPDH_VIC	Standard	33.0923
C11	CCND2	CCND2	Standard	34.5189

C11	CCND2	GAPDH_VIC	Standard	34.6886
C12	CCND2	CCND2	Standard	34.7826
C12	CCND2	GAPDH_VIC	Standard	34.6147
D1	20% FBS	CDK4	Unknown	23.2488
D2	20% FBS	CDK4	Unknown	23.3523
D3	20% FBS	CDK4	Unknown	23.4358
D4	bez FBS	CDK4	Unknown	24.2256
D5	bez FBS	CDK4	Unknown	24.1498
D6	bez FBS	CDK4	Unknown	24.0953
D9	noRT	CDK4	Unknown	Undetermined
D9	noRT	GAPDH_VIC	Unknown	Undetermined
D10	noRT	CCND2	Unknown	36.0978
D10	noRT	GAPDH_VIC	Unknown	37.1215
D11	NK	CDK4	Unknown	Undetermined
D11	NK	GAPDH_VIC	Unknown	Undetermined
D12	NK	CCND2	Unknown	35.6778
D12	NK	GAPDH_VIC	Unknown	35.0815
E1	20% FBS	CCND2	Unknown	21.4455
E2	20% FBS	CCND2	Unknown	21.4271
E3	20% FBS	CCND2	Unknown	21.4492
E4	bez FBS	CCND2	Unknown	22.3928
E5	bez FBS	CCND2	Unknown	22.7313
E6	bez FBS	CCND2	Unknown	22.3888
E9	noRT	CDK4	Unknown	Undetermined
E9	noRT	GAPDH_VIC	Unknown	Undetermined
E10	noRT	CCND2	Unknown	35.2706
E10	noRT	GAPDH_VIC	Unknown	36.7261
E11	NK	CDK4	Unknown	Undetermined
E11	NK	GAPDH_VIC	Unknown	Undetermined
E12	NK	CCND2	Unknown	35.4738
E12	NK	GAPDH_VIC	Unknown	34.7101
F1	20% FBS	GAPDH	Unknown	20.5752
F2	20% FBS	GAPDH	Unknown	20.7305
F3	20% FBS	GAPDH	Unknown	20.5455
F4	bez FBS	GAPDH	Unknown	21.7196
F5	bez FBS	GAPDH	Unknown	21.531
F6	bez FBS	GAPDH	Unknown	21.4658
G1	20% FBS	CDK4	Unknown	23.4688
G1	20% FBS	GAPDH_VIC	Unknown	23.0739
G2	20% FBS	CDK4	Unknown	23.3199
G2	20% FBS	GAPDH_VIC	Unknown	22.9466
G3	20% FBS	CDK4	Unknown	23.4103
G3	20% FBS	GAPDH_VIC	Unknown	22.9074
G4	bez FBS	CDK4	Unknown	24.296
G4	bez FBS	GAPDH_VIC	Unknown	23.9272
G5	bez FBS	CDK4	Unknown	24.2677
G5	bez FBS	GAPDH_VIC	Unknown	24.0036
G6	bez FBS	CDK4	Unknown	24.3746
G6	bez FBS	GAPDH_VIC	Unknown	24.0781
G7	20% FBS 1 ul EtOH	CDK4	Unknown	23.3002

G7	20% FBS 1 ul EtOH	GAPDH_VIC	Unknown	22.8017
G8	20% FBS 1 ul EtOH	CDK4	Unknown	23.2661
G8	20% FBS 1 ul EtOH	GAPDH_VIC	Unknown	22.7362
G9	20% FBS 1 ul EtOH	CDK4	Unknown	23.3593
G9	20% FBS 1 ul EtOH	GAPDH_VIC	Unknown	22.8891
G10	bez FBS 1 ul EtOH	CDK4	Unknown	24.3977
G10	bez FBS 1 ul EtOH	GAPDH_VIC	Unknown	24.2269
G11	bez FBS 1 ul EtOH	CDK4	Unknown	24.1755
G11	bez FBS 1 ul EtOH	GAPDH_VIC	Unknown	23.776
G12	bez FBS 1 ul EtOH	CDK4	Unknown	24.3171
G12	bez FBS 1 ul EtOH	GAPDH_VIC	Unknown	23.8551
H1	20% FBS	CCND2	Unknown	21.3678
H1	20% FBS	GAPDH_VIC	Unknown	22.9654
H2	20% FBS	CCND2	Unknown	21.5359
H2	20% FBS	GAPDH_VIC	Unknown	23.1585
H3	20% FBS	CCND2	Unknown	21.3107
H3	20% FBS	GAPDH_VIC	Unknown	22.6663
H4	bez FBS	CCND2	Unknown	22.2496
H4	bez FBS	GAPDH_VIC	Unknown	23.7825
H5	bez FBS	CCND2	Unknown	22.225
H5	bez FBS	GAPDH_VIC	Unknown	23.6861
H6	bez FBS	CCND2	Unknown	22.2228
H6	bez FBS	GAPDH_VIC	Unknown	23.8479
H7	20% FBS 2 ul EtOH	CCND2	Unknown	21.1505
H7	20% FBS 2 ul EtOH	GAPDH_VIC	Unknown	23.0562
H8	20% FBS 2 ul EtOH	CCND2	Unknown	21.1193
H8	20% FBS 2 ul EtOH	GAPDH_VIC	Unknown	22.7694
H9	20% FBS 2 ul EtOH	CCND2	Unknown	21.1879
H9	20% FBS 2 ul EtOH	GAPDH_VIC	Unknown	22.8954
H10	bez FBS 2 ul EtOH	CCND2	Unknown	22.0949
H10	bez FBS 2 ul EtOH	GAPDH_VIC	Unknown	23.9774
H11	bez FBS 2 ul EtOH	CCND2	Unknown	22.0481
H11	bez FBS 2 ul EtOH	GAPDH_VIC	Unknown	24.027
H12	bez FBS 2 ul EtOH	CCND2	Unknown	21.9176
H12	bez FBS 2 ul EtOH	GAPDH_VIC	Unknown	23.8864

Kalibrační křivky

GAPDH

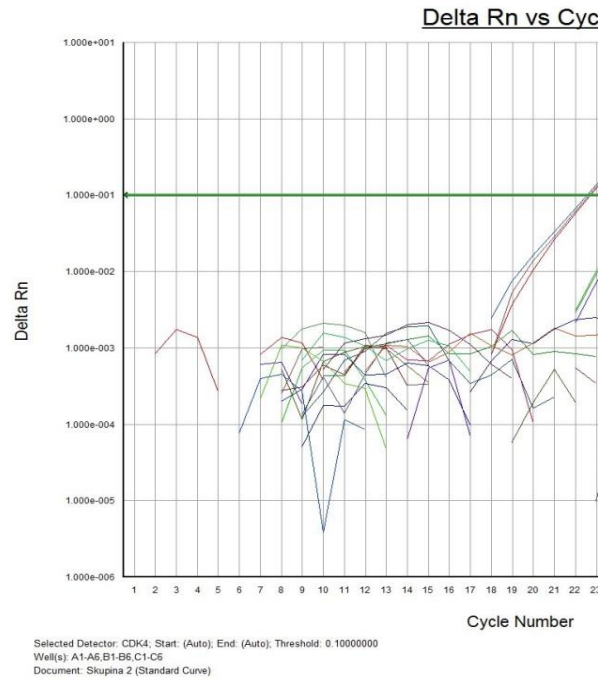


ds

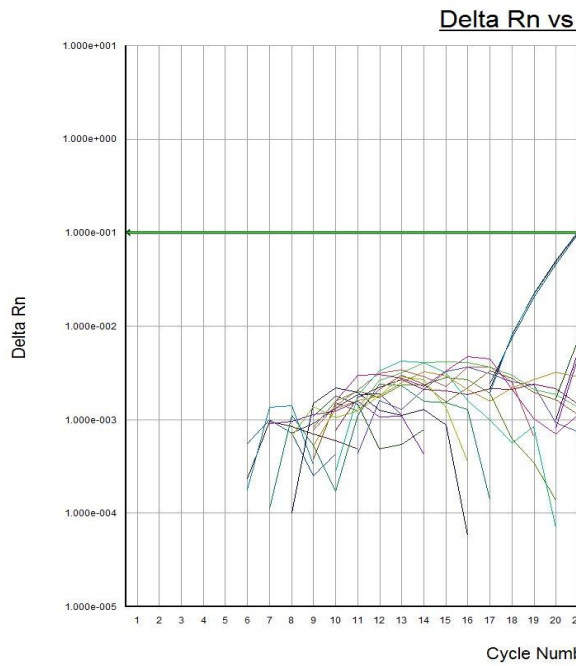
CDK4

	Qty
	150
	150
	15
	15
	1.5
	1.5
	0.15
	0.15
	0.015
	0.015
	0.0015
	0.0015
	150
	150
	15
	15
	1.5
	1.5
	0.15

CCND2



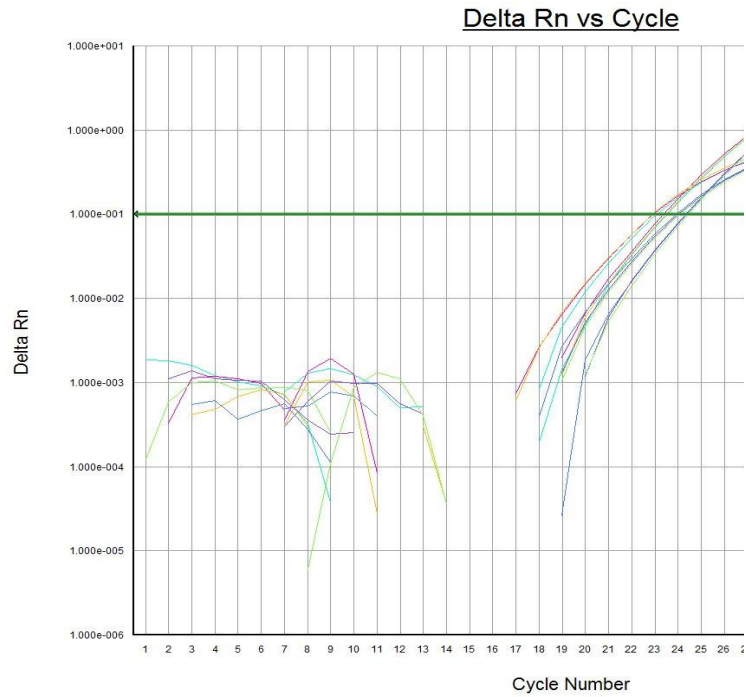
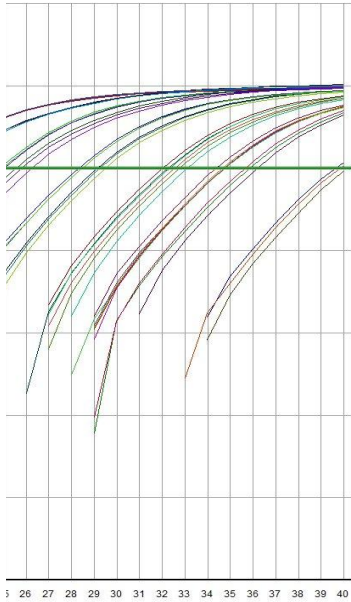
	0.15
	0.015
	0.015
	0.0015
	0.0015
	150
	150
	15
	15
	1.5
	1.5
	0.15
	0.15
	0.015
	0.015
	0.0015
	0.0015
	150
	150
	15
	15
	1.5
	1.5
	0.15
	0.15
	0.015
	0.015
	0.0015
	0.0015
	150
	150
	15
	15
	1.5
	1.5
	0.15
	0.15
	0.015
	0.015
	0.0015



Selected Detector: CCND2; Start: (Auto); End: (Auto); Threshold: 0.10000000
Well(s): A7-A12,B7-B12,C7-C12
Document: Skupina 2 (Standard Curve)

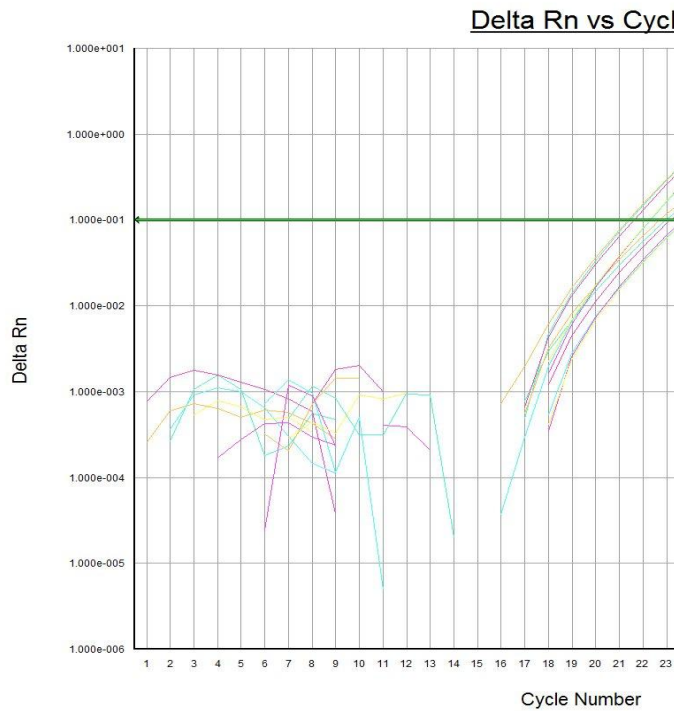
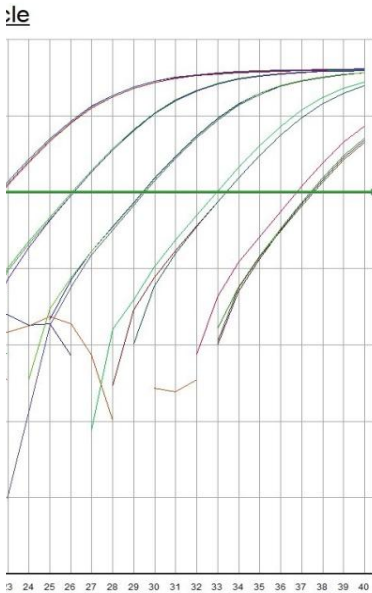
Relativní kvantifikace - duplex

20 % FBS vs. no FBS CDK4 a GAPDH



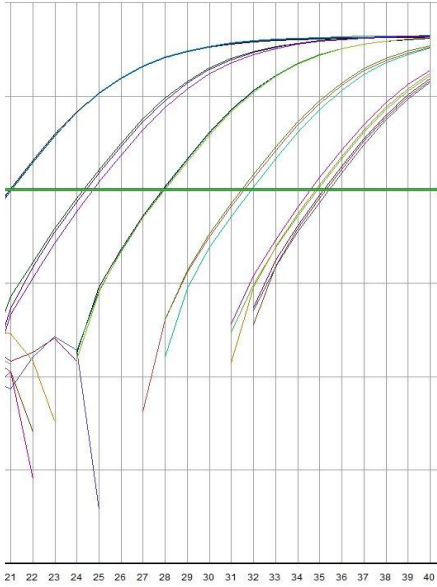
Selected Detector: All
Well(s): G1-G6
Document: Skupina 2 (Standard Curve)

20 % FBS vs. no FBS CCND2 a GAPDH



Selected Detector: All
Well(s): H1-H6
Document: Skupina 2 (Standard Curve)

Cycle

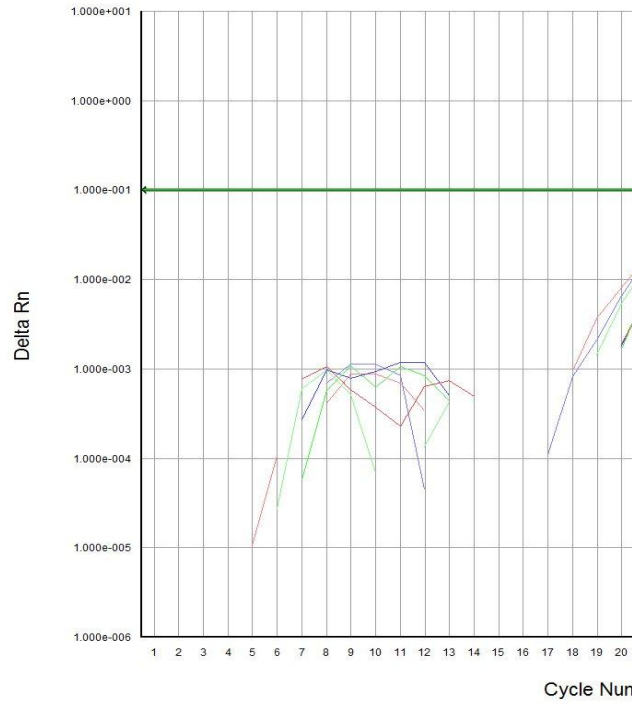


ber

Relativní kvantifikace - singlelex

20 % FBS vs. no FBS CDK4

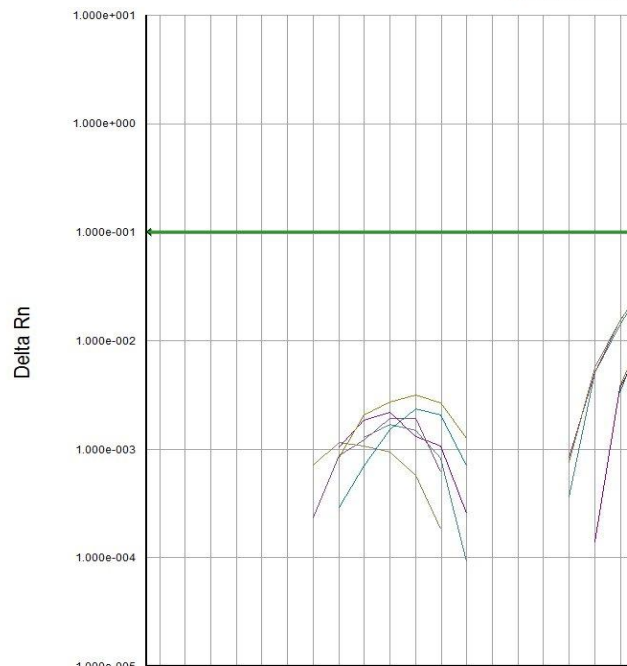
Delta Rn vs



Selected Detector: All
Well(s): D1-D6
Document: Skupina 2 (Standard Curve)

20 % FBS vs. no FBS CCND2

Delta Rn

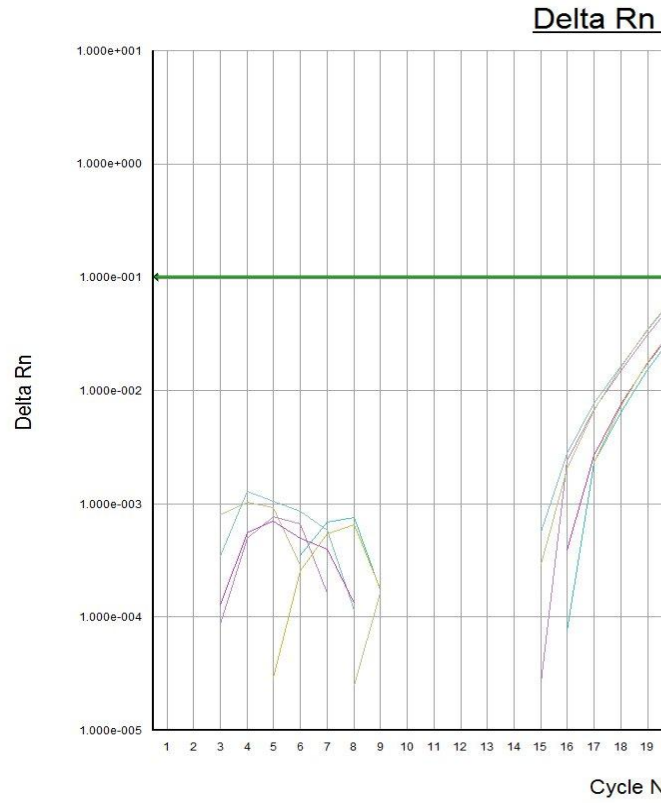


1.000e-005 1 2 3 4 5 6 7 8 9 10 11 12 13 14 15 16 17 18 19

Cycle N

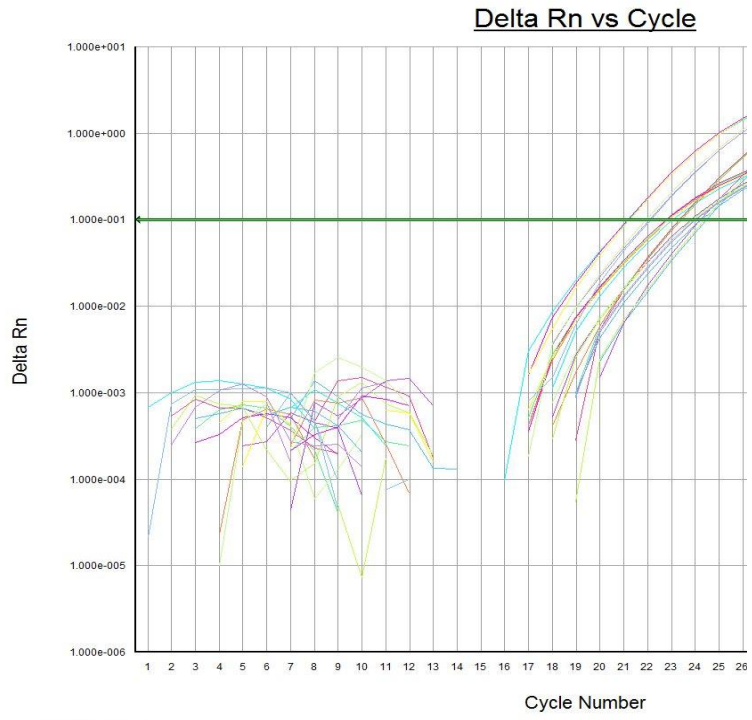
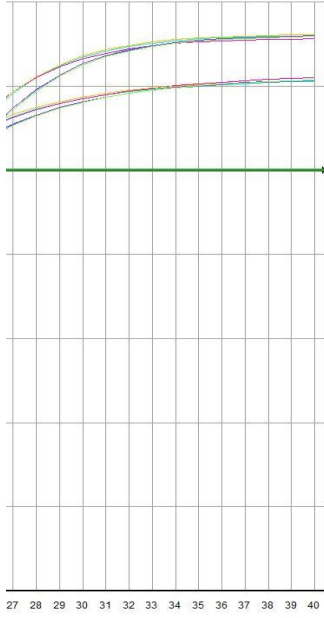
Selected Detector: All
Well(s): E1-E6
Document: Skupina 2 (Standard Curve)

20 % FBS vs. no FBS GAPDH-FAM



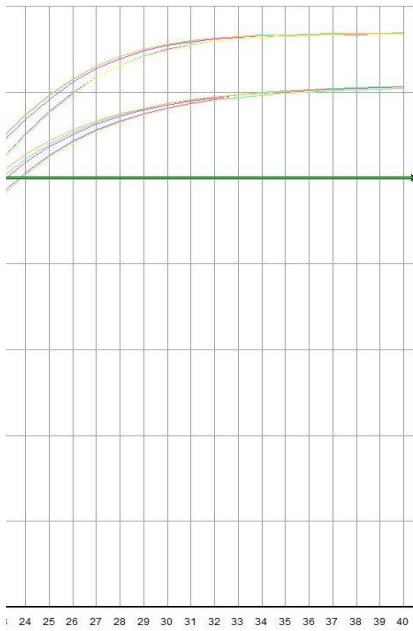
Selected Detector: All
Well(s): F1-F6
Document: Skupina 2 (Standard Curve)

Vliv inhibitorů



Selected Detector: All
Well(s): G7-G12,H7-H12
Document: Skupina 2 (Standard Curve)

le



s Cycle



nber

vs Cycle



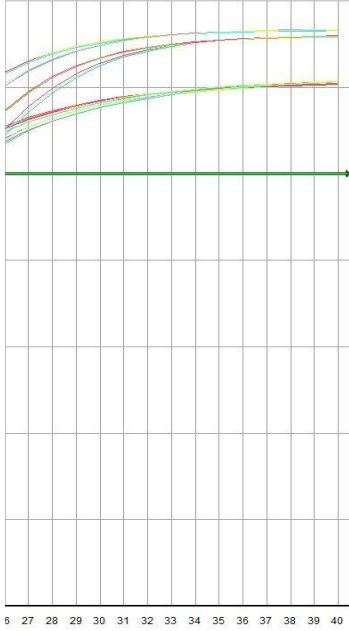
20 21 22 23 24 25 26 27 28 29 30 31 32 33 34 35 36 37 38 39 40

Number

vs Cycle



Number



Document Name: sk.3
 Plate Type: Standard Curve
 User: Student

Document Information

Operator: Administrator
 Run Date: 1 May 17 2016 13:30:12
 Last Modified: May 17 2016 15:13:43
 Instrument Type: Applied Biosystems 7500 Real-Time PCR System

Comments:
 SDS v1.4

Thermal Cycler Profile

Stage	Repetitions	Temperature	Time	Ramp Rate
1	1	50.0 °C		2:00
2	1	95.0 °C		10:00
3	40	95.0 °C		0:15
		60.0 °C		1:00

Standard 7500 Mode
 Data Collection : Stage 3 Step 2
 PCR Volume: 25 µL

Standard Curve Information

Detector	N Slope	Intercept	R2	Number of Standards
CCND3	-1.802252	41.689342	0.893183	13
GAPDH_VIC	-1.049586	38.653770	0.601892	31
Jun	-1.200780	40.539257	0.787141	13

Well	Sample Name	Detector	Task	Ct
A1	CCND3	CCND3	Standard	31.6822
A1	CCND3	GAPDH_VIC	Standard	31.2193
A2	CCND3	CCND3	Standard	34.2619
A2	CCND3	GAPDH_VIC	Standard	32.531
A3	CCND3	CCND3	Standard	35.58
A3	CCND3	GAPDH_VIC	Standard	33.9668
A4	CCND3	CCND3	Standard	38.0064
A4	CCND3	GAPDH_VIC	Standard	36.0252
A5	CCND3	CCND3	Standard	38.1908
A5	CCND3	GAPDH_VIC	Standard	37.1914
A6	CCND3	CCND3	Standard	Undetermined
A6	CCND3	GAPDH_VIC	Standard	36.9226
A7	JUN	Jun	Standard	33.0414
A7	JUN	GAPDH_VIC	Standard	34.2212
A8	JUN	Jun	Standard	35.3403
A8	JUN	GAPDH_VIC	Standard	34.5012
A9	JUN	Jun	Standard	37.6681
A9	JUN	GAPDH_VIC	Standard	35.796
A10	JUN	Jun	Standard	37.694

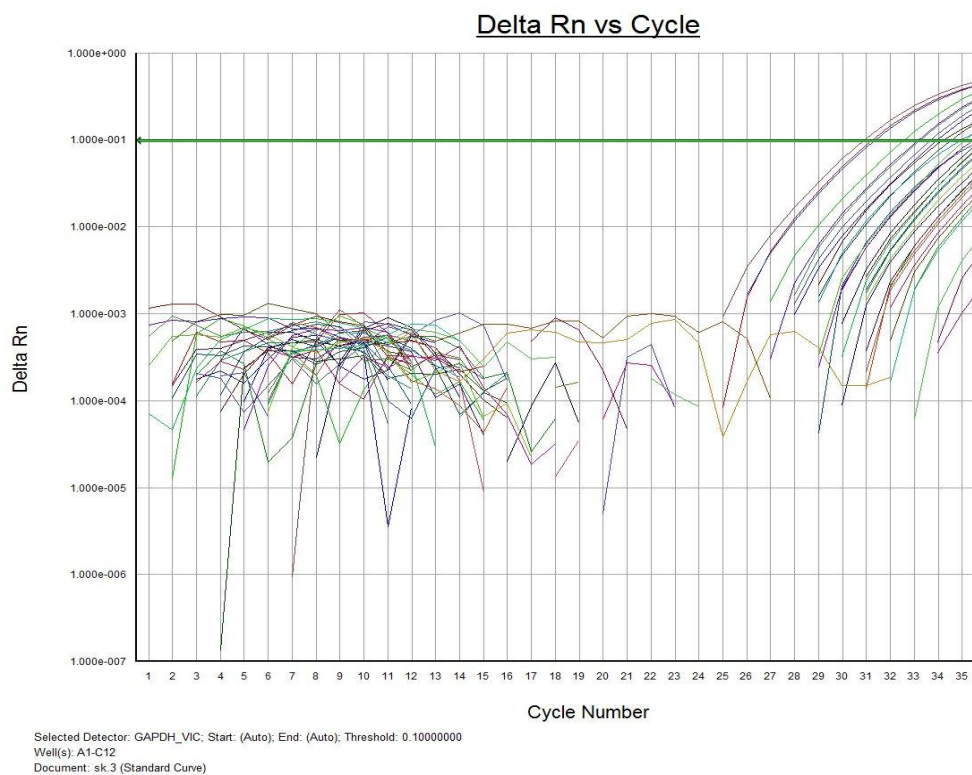
A10	JUN	GAPDH_VIC	Standard	37.4266	
A11	JUN	Jun	Standard	Undetermined	
A11	JUN	GAPDH_VIC	Standard	39.7174	
A12	JUN	Jun	Standard	39.2729	
A12	JUN	GAPDH_VIC	Standard	Undetermined	
B1	CCND3	CCND3	Standard	31.7389	
B1	CCND3	GAPDH_VIC	Standard	30.8939	
B2	CCND3	CCND3	Standard	35.5064	
B2	CCND3	GAPDH_VIC	Standard	33.2039	
B3	CCND3	CCND3	Standard	35.4625	
B3	CCND3	GAPDH_VIC	Standard	33.6483	
B4	CCND3	CCND3	Standard	38.7849	
B4	CCND3	GAPDH_VIC	Standard	36.2499	
B5	CCND3	CCND3	Standard	Undetermined	
B5	CCND3	GAPDH_VIC	Standard	37.2062	
B6	CCND3	CCND3	Standard	Undetermined	
B6	CCND3	GAPDH_VIC	Standard	38.0236	
B7	JUN	Jun	Standard	33.1511	
B7	JUN	GAPDH_VIC	Standard	35.7929	
B8	JUN	Jun	Standard	36.4143	
B8	JUN	GAPDH_VIC	Standard	35.4382	
B9	JUN	Jun	Standard	37.1011	
B9	JUN	GAPDH_VIC	Standard	36.4125	
B10	JUN	Jun	Standard	37.8457	
B10	JUN	GAPDH_VIC	Standard	38.1061	
B11	JUN	Jun	Standard	Undetermined	
B11	JUN	GAPDH_VIC	Standard	Undetermined	
B12	JUN	Jun	Standard	Undetermined	
B12	JUN	GAPDH_VIC	Standard	Undetermined	
C1	CCND3	CCND3	Standard	31.6313	
C1	CCND3	GAPDH_VIC	Standard	31.3165	
C2	CCND3	CCND3	Standard	35.2218	
C2	CCND3	GAPDH_VIC	Standard	33.1292	
C3	CCND3	CCND3	Standard	36.561	
C3	CCND3	GAPDH_VIC	Standard	35.1207	
C4	CCND3	CCND3	Standard	37.7107	
C4	CCND3	GAPDH_VIC	Standard	36.0381	
C5	CCND3	CCND3	Standard	Undetermined	
C5	CCND3	GAPDH_VIC	Standard	37.7974	
C6	CCND3	CCND3	Standard	Undetermined	
C6	CCND3	GAPDH_VIC	Standard	37.3094	
C7	JUN	Jun	Standard	33.6049	
C7	JUN	GAPDH_VIC	Standard	34.9433	
C8	JUN	Jun	Standard	37.3182	
C8	JUN	GAPDH_VIC	Standard	35.4424	
C9	JUN	Jun	Standard	37.177	
C9	JUN	GAPDH_VIC	Standard	36.72	
C10	JUN	Jun	Standard	38.4114	
C10	JUN	GAPDH_VIC	Standard	38.417	
C11	JUN	Jun	Standard	Undetermined	

C11	JUN	GAPDH_VIC	Standard	Undetermined	
C12	JUN	Jun	Standard	Undetermined	
C12	JUN	GAPDH_VIC	Standard	Undetermined	
D1	20 % FBS	CCND3	Unknown	26.7697	
D1	20 % FBS	GAPDH_VIC	Unknown	23.0116	
D2	20 % FBS	CCND3	Unknown	27.0439	
D2	20 % FBS	GAPDH_VIC	Unknown	23.0084	
D3	20 % FBS	CCND3	Unknown	27.5073	
D3	20 % FBS	GAPDH_VIC	Unknown	24.6365	
D4	bez FBS	Jun	Unknown	32.6336	
D4	bez FBS	GAPDH_VIC	Unknown	21.042	
D5	bez FBS	Jun	Unknown	32.372	
D5	bez FBS	GAPDH_VIC	Unknown	21.3152	
D6	bez FBS	Jun	Unknown	32.2304	
D6	bez FBS	GAPDH_VIC	Unknown	21.1841	
D9	noRT	CCND3	Unknown	Undetermined	
D9	noRT	GAPDH_VIC	Unknown	37.295	
D10	noRT	Jun	Unknown	32.7535	
D10	noRT	GAPDH_VIC	Unknown	Undetermined	
D11	NK	CCND3	Unknown	Undetermined	
D11	NK	GAPDH_VIC	Unknown	37.9088	
D12	NK	Jun	Unknown	Undetermined	
D12	NK	GAPDH_VIC	Unknown	Undetermined	
E1	20 % FBS	CCND3	Unknown	27.1451	
E1	20 % FBS	GAPDH_VIC	Unknown	23.44	
E2	20 % FBS	CCND3	Unknown	26.8919	
E2	20 % FBS	GAPDH_VIC	Unknown	22.9904	
E4	bez FBS	Jun	Unknown	32.7407	
E4	bez FBS	GAPDH_VIC	Unknown	21.4883	
E5	bez FBS	Jun	Unknown	33.422	
E5	bez FBS	GAPDH_VIC	Unknown	22.2677	
E9	noRT	CCND3	Unknown	39.0647	
E9	noRT	GAPDH_VIC	Unknown	37.518	
E10	noRT	Jun	Unknown	32.7313	
E10	noRT	GAPDH_VIC	Unknown	Undetermined	
E11	NK	CCND3	Unknown	Undetermined	
E11	NK	GAPDH_VIC	Unknown	38.5889	
E12	NK	Jun	Unknown	Undetermined	
E12	NK	GAPDH_VIC	Unknown	Undetermined	
F1	20 % FBS	CCND3	Unknown	27.0163	
F1	20 % FBS	GAPDH_VIC	Unknown	23.2268	
F2	20 % FBS	CCND3	Unknown	26.9301	
F2	20 % FBS	GAPDH_VIC	Unknown	23.1804	
F4	bez FBS	Jun	Unknown	33.2588	
F4	bez FBS	GAPDH_VIC	Unknown	21.5904	
F5	bez FBS	Jun	Unknown	33.5547	
F5	bez FBS	GAPDH_VIC	Unknown	22.2412	
F7	20 % FBS	CCND3	Unknown	27.0737	
F8	20 % FBS	CCND3	Unknown	27.0051	
F9	20 % FBS	CCND3	Unknown	26.8199	

F10	20 % FBS	Jun	Unknown	33.7437	
F11	20 % FBS	Jun	Unknown	33.9659	
F12	20 % FBS	Jun	Unknown	33.7599	
G1	EtOH 2 ul	CCND3	Unknown	Undetermined	
G1	EtOH 2 ul	GAPDH_VIC	Unknown	Undetermined	
G2	EtOH 2 ul	CCND3	Unknown	Undetermined	
G2	EtOH 2 ul	GAPDH_VIC	Unknown	38.1705	
G3	EtOH 2 ul	CCND3	Unknown	Undetermined	
G3	EtOH 2 ul	GAPDH_VIC	Unknown	Undetermined	
G4	EtOH 2 ul	Jun	Unknown	Undetermined	
G4	EtOH 2 ul	GAPDH_VIC	Unknown	Undetermined	
G5	EtOH 2 ul	Jun	Unknown	Undetermined	
G5	EtOH 2 ul	GAPDH_VIC	Unknown	Undetermined	
G6	EtOH 2 ul	Jun	Unknown	Undetermined	
G6	EtOH 2 ul	GAPDH_VIC	Unknown	Undetermined	
G7	bez FBS	CCND3	Unknown	25.0844	
G8	bez FBS	CCND3	Unknown	25.5685	
G9	bez FBS	CCND3	Unknown	25.8599	
G10	bez FBS	Jun	Unknown	32.7212	
G11	bez FBS	Jun	Unknown	32.0021	
G12	bez FBS	Jun	Unknown	31.3697	
H1	EtOH 1 ul	CCND3	Unknown	25.9335	
H1	EtOH 1 ul	GAPDH_VIC	Unknown	22.4354	
H2	EtOH 1 ul	CCND3	Unknown	26.1301	
H2	EtOH 1 ul	GAPDH_VIC	Unknown	22.3416	
H3	EtOH 1 ul	CCND3	Unknown	26.1328	
H3	EtOH 1 ul	GAPDH_VIC	Unknown	23.2082	
H4	EtOH 1 ul	Jun	Unknown	Undetermined	
H4	EtOH 1 ul	GAPDH_VIC	Unknown	26.0033	
H5	EtOH 1 ul	Jun	Unknown	Undetermined	
H5	EtOH 1 ul	GAPDH_VIC	Unknown	25.7224	
H6	EtOH 1 ul	Jun	Unknown	Undetermined	
H6	EtOH 1 ul	GAPDH_VIC	Unknown	23.7337	
H7	20 % FBS	GAPDH	Unknown	21.0077	
H8	20 % FBS	GAPDH	Unknown	20.6605	
H9	20 % FBS	GAPDH	Unknown	20.3281	
H10	bez FBS	GAPDH	Unknown	19.9743	
H11	bez FBS	GAPDH	Unknown	19.3953	
H12	bez FBS	GAPDH	Unknown	18.4614	

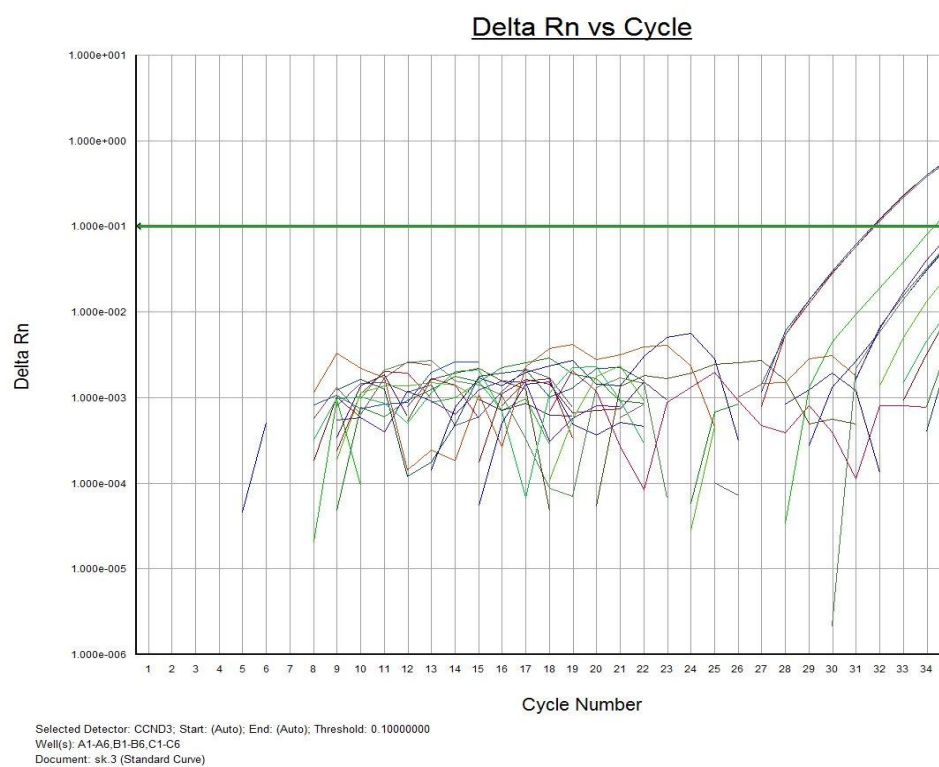
Kalibrační křivky

GAPDH



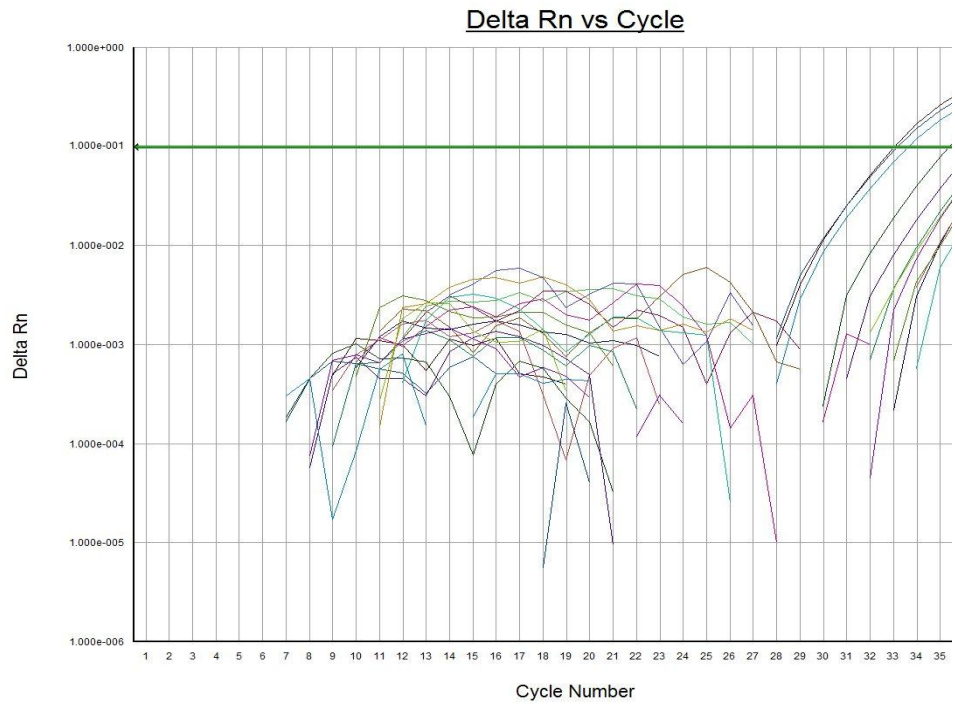
CCND3

Qty
150
150
15
15
1.5
1.5
0.15
0.15
0.015
0.015
0.0015
0.0015
150
150
15
15
1.5
1.5
0.15



0.15
0.015
0.015
0.0015
0.0015
150
150
15
15
1.5
1.5
0.15
0.15
0.015
0.015
0.0015
0.0015
150
150
15
15
1.5
1.5
0.15
0.15
0.015
0.015
0.0015
0.0015
150
150
15
15
1.5
1.5
0.15
0.15
0.015

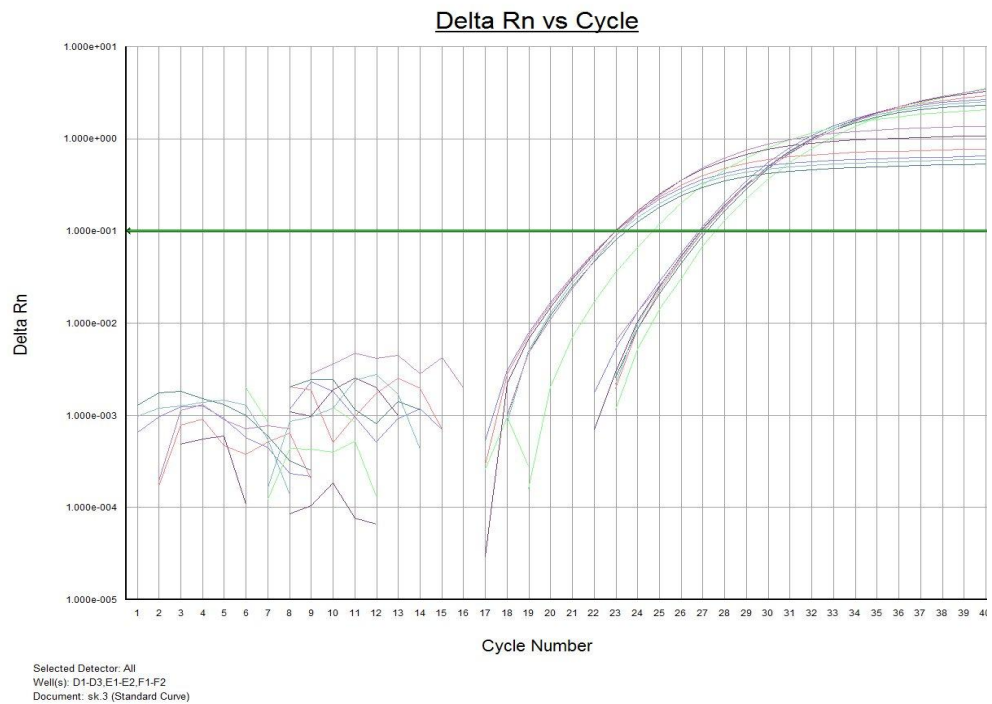
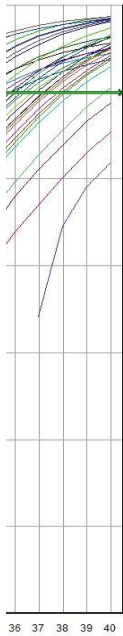
JUN



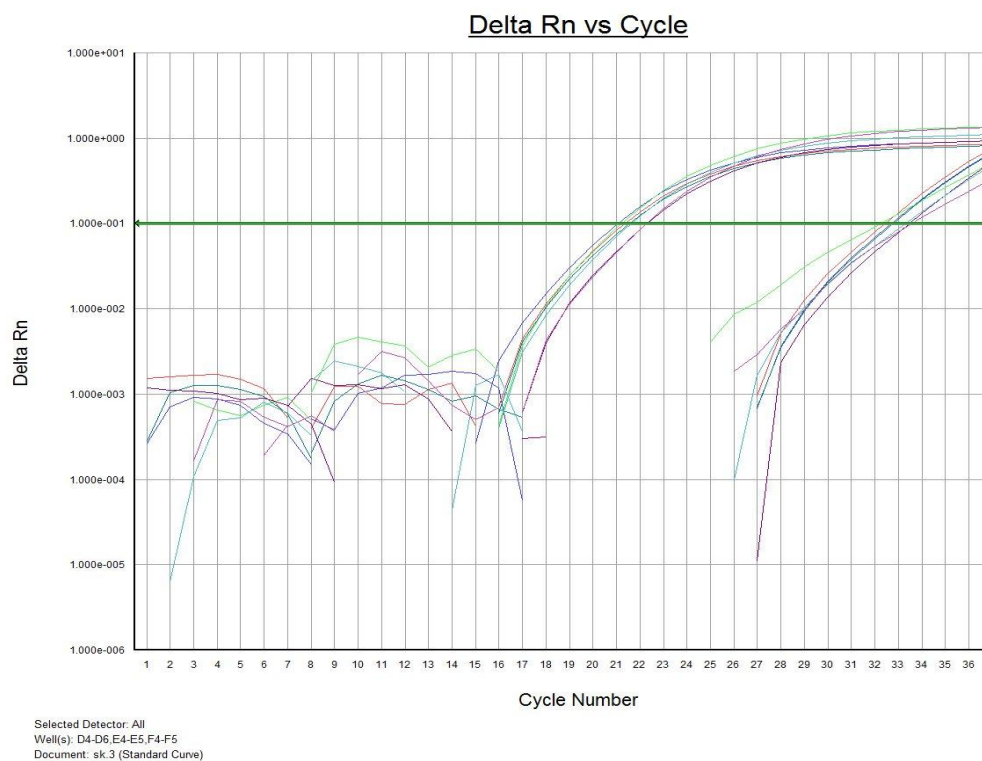
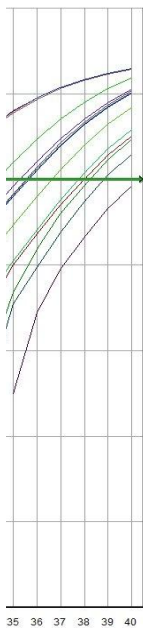
Selected Detector: Jun; Start: (Auto); End: (Auto); Threshold: 0.10000000
 Well(s): A7-A12,B7-B12,C7-C12
 Document: sk.3 (Standard Curve)

Relativní kvantifikace - duplex

20 % FBS vs. no FBS CCND3 a GAPDH

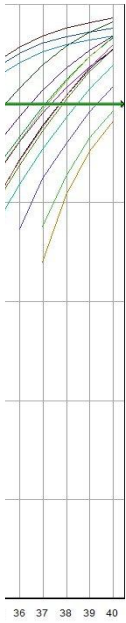


20 % FBS vs. no FBS JUN a GAPDH



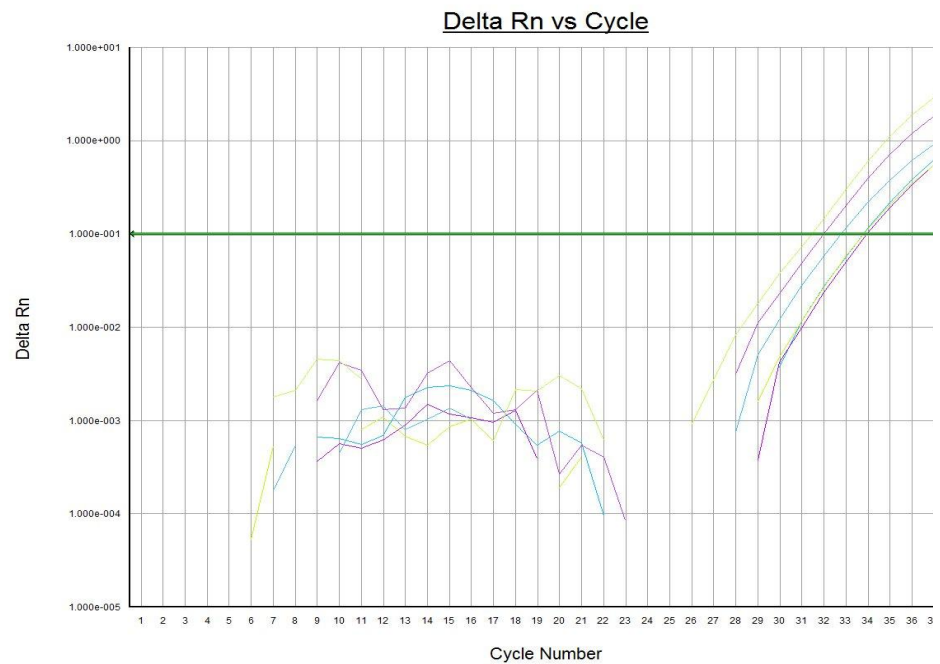
Relativní kvantifikace - singlelex

20 % FBS vs. no FBS CCND3



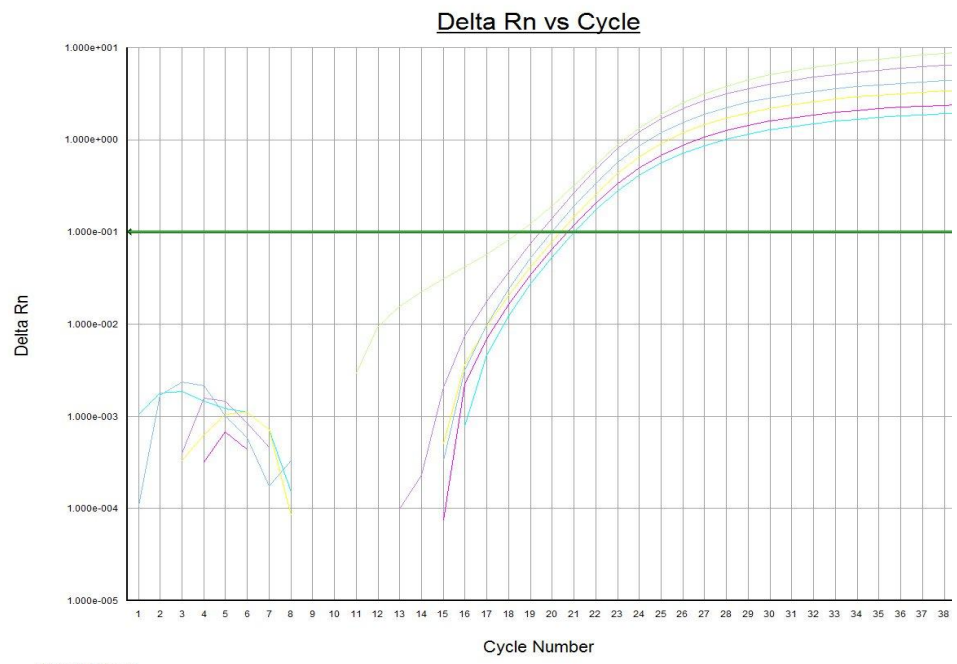
Selected Detector: All
Well(s): F7-F9,G7-G9
Document: sk.3 (Standard Curve)

20 % FBS vs. no FBS JUN



Selected Detector: All
Well(s): F10-F12,G10-G12
Document: sk.3 (Standard Curve)

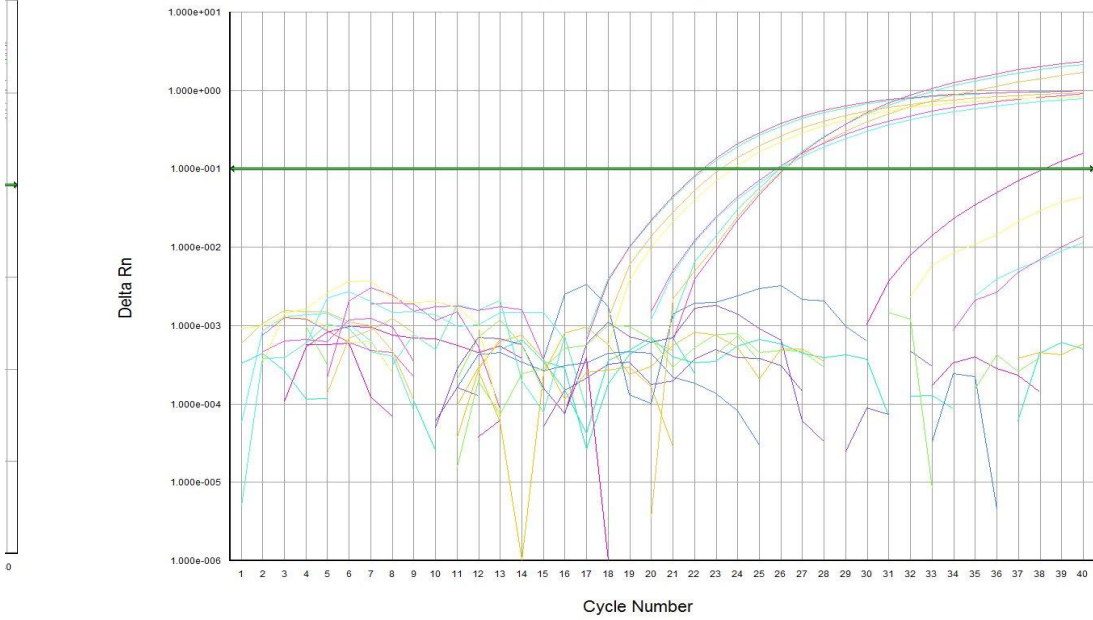
20 % FBS vs. no FBS GAPDH-FAM



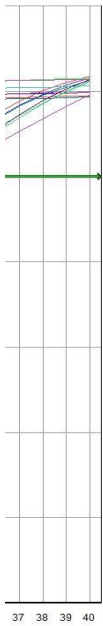
Selected Detector: All
Well(s): H7-H12
Document: sk.3 (Standard Curve)

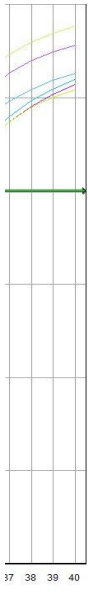
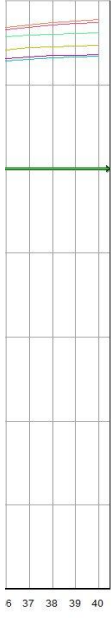
Vliv inhibitorů

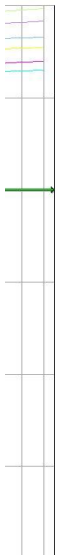
Delta Rn vs Cycle



Selected Detector: All
Well(s): G1-G6,H1-H6
Document: sk.3 (Standard Curve)







Document Name: skupina 3
 Plate Type: Standard Curve
 User: Student

Document Information

Operator: Administrator
 Run Date: Tuesday May 19 2015 15:28:19
 Last Modified: Tuesday May 19 2015 16:57:56
 Instrument Type: Applied Biosystems 7500 Real-Time PCR System

Comments:
 SDS v1.4

Thermal Cycler Profile

Stage	Repetitions	Temperature	Time	Ramp Rate
	1	50.0 °C		2:00
	2	95.0 °C		10:00
	3	95.0 °C		0:15
		60.0 °C		1:00
4 (Dissociation)	1	95.0 °C		0:15 Auto
		60.0 °C		1:00 Auto
		95.0 °C		0:15 Auto
		60.0 °C		0:15 Auto

Standard 7500 Mode

Data Collection : Stage 3 Step 2
 PCR Volume: 25 µL

Well	Sample Name	Detector	Task	Ct
A1		GAPDH_VIC	Standard	19.4175
A1		CCND3	Standard	23.4349
A2		GAPDH_VIC	Standard	21.6803
A2		CCND3	Standard	25.8999
A3		GAPDH_VIC	Standard	25.0957
A3		CCND3	Standard	29.2836
A4		GAPDH_VIC	Standard	28.4504
A4		CCND3	Standard	32.4464
A5		GAPDH_VIC	Standard	31.8103
A5		CCND3	Standard	35.3045
A6		GAPDH_VIC	Standard	35.3691
A6		CCND3	Standard	Undetermined
A7	NK	GAPDH_VIC	Unknown	39.5253
A7	NK	CCND3	Unknown	Undetermined
A8	noRT	GAPDH_VIC	Unknown	Undetermined
A8	noRT	CCND3	Unknown	Undetermined
A9	noRT	GAPDH_VIC	Unknown	39.3293
A9	noRT	CCND3	Unknown	Undetermined
A10	bez FBS	GAPDH_VIC	Unknown	22.2828
A10	bez FBS	CCND3	Unknown	26.3634

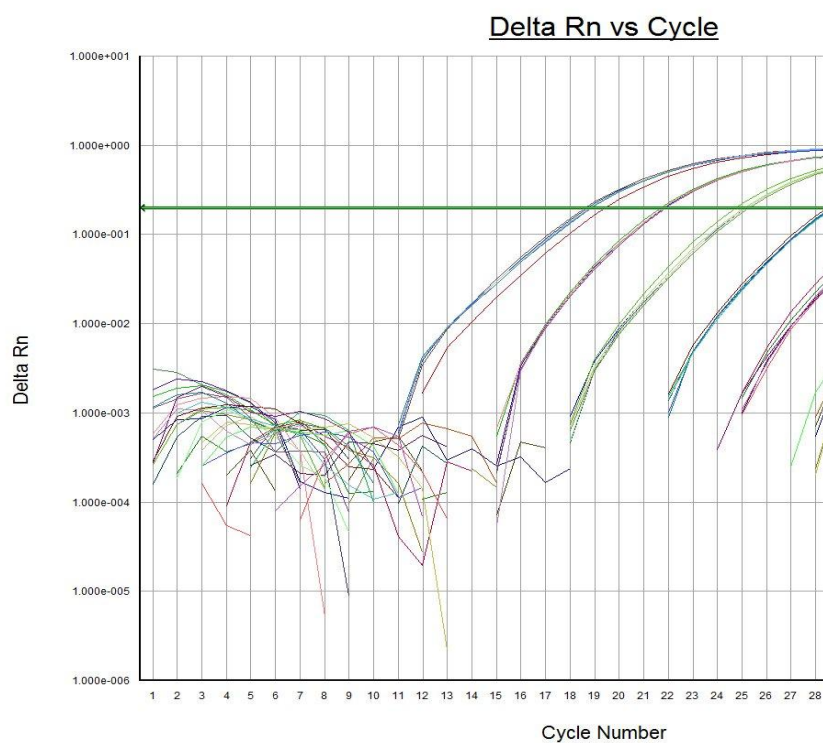
A11	bez FBS	GAPDH_VIC	Unknown	22.3949
A11	bez FBS	CCND3	Unknown	26.3719
A12	bez FBS	GAPDH_VIC	Unknown	23.0142
A12	bez FBS	CCND3	Unknown	26.2957
B1		GAPDH_VIC	Standard	18.6189
B1		CCND3	Standard	22.6283
B2		GAPDH_VIC	Standard	21.8138
B2		CCND3	Standard	26.0068
B3		GAPDH_VIC	Standard	25.1659
B3		CCND3	Standard	29.3774
B4		GAPDH_VIC	Standard	28.6282
B4		CCND3	Standard	32.7353
B5		GAPDH_VIC	Standard	32.064
B5		CCND3	Standard	36.8365
B6		GAPDH_VIC	Standard	35.2233
B6		CCND3	Standard	39.7392
B7	NK	GAPDH_VIC	Unknown	Undetermined
B7	NK	JunD	Unknown	Undetermined
B8	noRT	GAPDH_VIC	Unknown	Undetermined
B8	noRT	JunD	Unknown	Undetermined
B9	noRT	GAPDH_VIC	Unknown	Undetermined
B9	noRT	JunD	Unknown	Undetermined
B10	bez FBS	GAPDH_VIC	Unknown	22.259
B10	bez FBS	JunD	Unknown	26.3573
B11	bez FBS	GAPDH_VIC	Unknown	22.3422
B11	bez FBS	JunD	Unknown	26.3632
B12	bez FBS	GAPDH_VIC	Unknown	22.0592
B12	bez FBS	JunD	Unknown	26.3279
C1		GAPDH_VIC	Standard	18.7298
C1		CCND3	Standard	22.7195
C2		GAPDH_VIC	Standard	21.8245
C2		CCND3	Standard	25.9791
C3		GAPDH_VIC	Standard	24.7397
C3		CCND3	Standard	29.0607
C4		GAPDH_VIC	Standard	28.6941
C4		CCND3	Standard	32.5152
C5		GAPDH_VIC	Standard	31.4033
C5		CCND3	Standard	35.5964
C6		GAPDH_VIC	Standard	35.2178
C6		CCND3	Standard	Undetermined
C10	20 % FBS	GAPDH_VIC	Unknown	22.2913
C10	20 % FBS	CCND3	Unknown	26.4279
C11	20 % FBS	GAPDH_VIC	Unknown	22.2198
C11	20 % FBS	CCND3	Unknown	26.4324
C12	20 % FBS	GAPDH_VIC	Unknown	22.1536
C12	20 % FBS	CCND3	Unknown	26.2809
D1		GAPDH_VIC	Standard	18.8789
D1		JunD	Standard	24.5394
D2		GAPDH_VIC	Standard	21.8041
D2		JunD	Standard	26.1271

D3		GAPDH_VIC	Standard	25.1906
D3		JunD	Standard	28.7587
D4		GAPDH_VIC	Standard	28.6436
D4		JunD	Standard	31.8381
D5		GAPDH_VIC	Standard	32.1099
D5		JunD	Standard	35.0348
D6		GAPDH_VIC	Standard	34.9345
D6		JunD	Standard	37.8332
D10	20 % FBS	GAPDH_VIC	Unknown	22.4276
D10	20 % FBS	JunD	Unknown	26.2645
D11	20 % FBS	GAPDH_VIC	Unknown	22.3302
D11	20 % FBS	JunD	Unknown	26.0897
D12	20 % FBS	GAPDH_VIC	Unknown	22.185
D12	20 % FBS	JunD	Unknown	27.5725
E1		GAPDH_VIC	Standard	18.8997
E1		JunD	Standard	24.6273
E2		GAPDH_VIC	Standard	21.9112
E2		JunD	Standard	25.7467
E3		GAPDH_VIC	Standard	25.2805
E3		JunD	Standard	28.993
E4		GAPDH_VIC	Standard	28.6066
E4		JunD	Standard	31.1467
E5		GAPDH_VIC	Standard	32.1377
E5		JunD	Standard	34.094
E6		GAPDH_VIC	Standard	35.5773
E6		JunD	Standard	37.705
E10	EtOH 1 ul	GAPDH_VIC	Unknown	29.5014
E10	EtOH 1 ul	CCND3	Unknown	28.439
E11	EtOH 1 ul	GAPDH_VIC	Unknown	Undetermined
E11	EtOH 1 ul	CCND3	Unknown	Undetermined
E12	EtOH 1 ul	GAPDH_VIC	Unknown	Undetermined
E12	EtOH 1 ul	CCND3	Unknown	Undetermined
F1		GAPDH_VIC	Standard	18.8186
F1		JunD	Standard	24.312
F2		GAPDH_VIC	Standard	21.8637
F2		JunD	Standard	26.2044
F3		GAPDH_VIC	Standard	25.0908
F3		JunD	Standard	28.8951
F4		GAPDH_VIC	Standard	28.7065
F4		JunD	Standard	31.8502
F5		GAPDH_VIC	Standard	32.008
F5		JunD	Standard	36
F6		GAPDH_VIC	Standard	35.536
F6		JunD	Standard	39.2465
F10	EtOH 1 ul	GAPDH_VIC	Unknown	Undetermined
F10	EtOH 1 ul	JunD	Unknown	Undetermined
F11	EtOH 1 ul	GAPDH_VIC	Unknown	Undetermined
F11	EtOH 1 ul	JunD	Unknown	Undetermined
F12	EtOH 1 ul	GAPDH_VIC	Unknown	Undetermined
F12	EtOH 1 ul	JunD	Unknown	Undetermined

G10	EtOH 2 ul	GAPDH_VIC	Unknown	Undetermined
G10	EtOH 2 ul	CCND3	Unknown	Undetermined
G11	EtOH 2 ul	GAPDH_VIC	Unknown	Undetermined
G11	EtOH 2 ul	CCND3	Unknown	Undetermined
G12	EtOH 2 ul	GAPDH_VIC	Unknown	Undetermined
G12	EtOH 2 ul	CCND3	Unknown	Undetermined
H10	EtOH 2 ul	GAPDH_VIC	Unknown	Undetermined
H10	EtOH 2 ul	JunD	Unknown	Undetermined
H11	EtOH 2 ul	GAPDH_VIC	Unknown	Undetermined
H11	EtOH 2 ul	JunD	Unknown	Undetermined
H12	EtOH 2 ul	GAPDH_VIC	Unknown	Undetermined
H12	EtOH 2 ul	JunD	Unknown	Undetermined

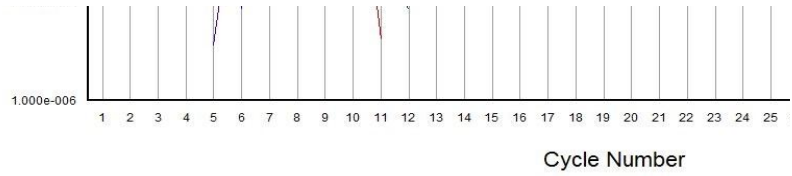
GAPDH

StdDev Ct	Qty
	150
	150
	15
	15
	1.5
	1.5
	0.15
	0.15
	0.015
	0.015
	0.0015
	0.0015

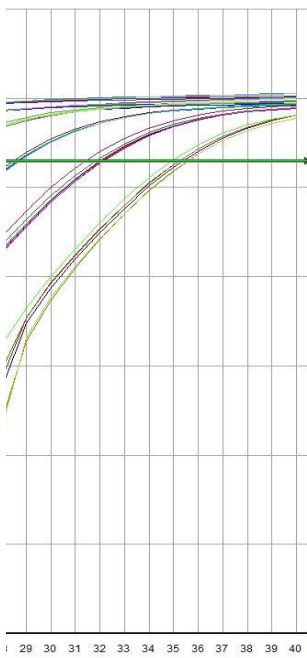


Selected Detector: GAPDH_VIC; Start: (Auto); End: (Auto); Threshold: 0.20000000
Well(s): A1-A6,B1-B6,C1-C6,D1-D6,E1-E6,F1-F6
Document: skupina 3 (Standard Curve)

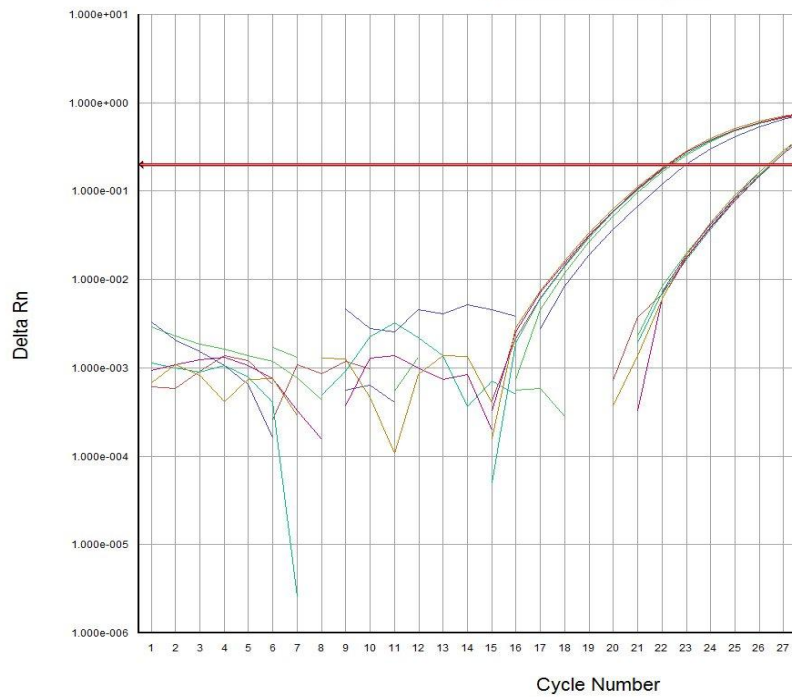
	1.5
	1.5
	0.15
	0.15
	0.015
	0.015
	0.0015
	0.0015
	150
	150
	15
	15
	1.5
	1.5
	0.15
	0.15
	0.015
	0.015
	0.0015
	0.0015
	150
	150
	15
	15
	1.5
	1.5
	0.15
	0.15
	0.015
	0.015
	0.0015
	0.0015



FBS vs. no FBS GAPDH a CCND3

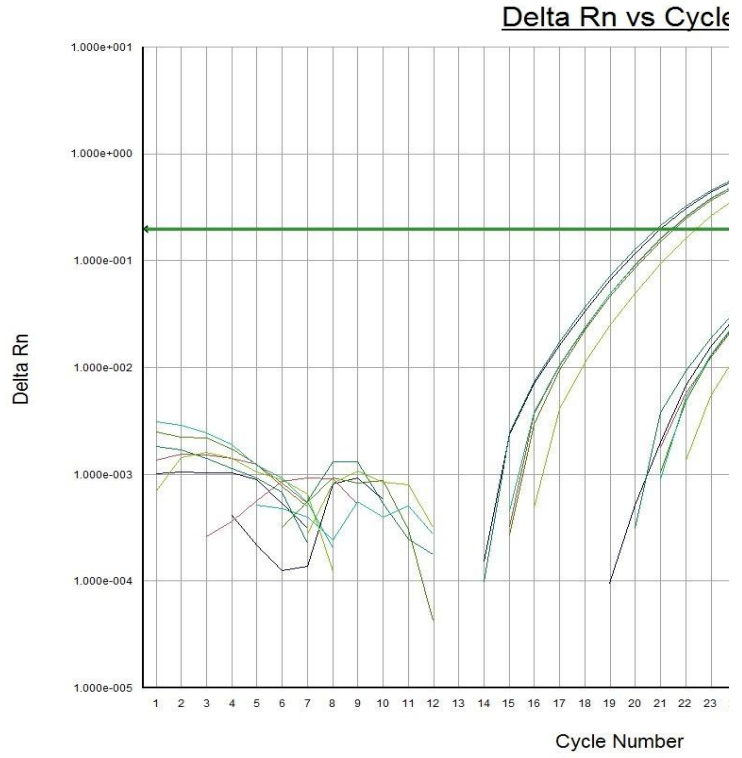
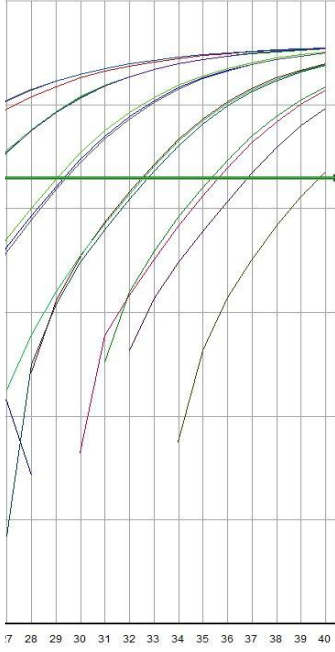


Delta Rn vs Cycle

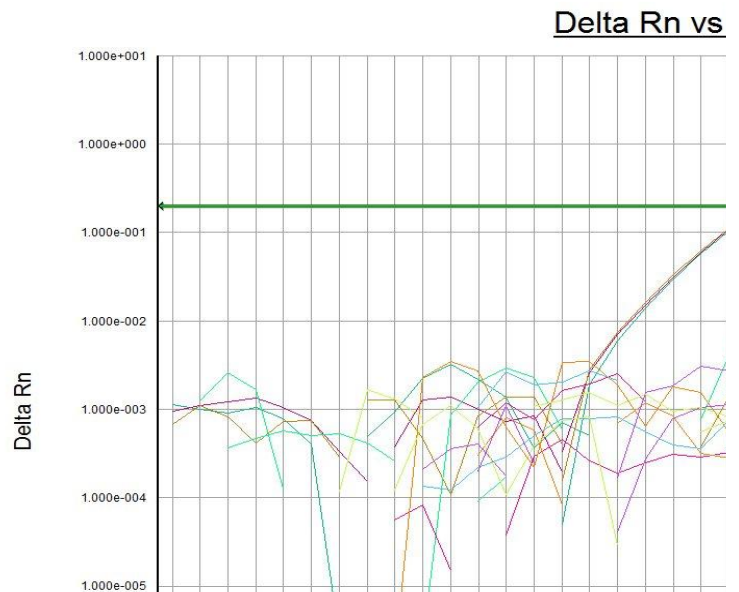
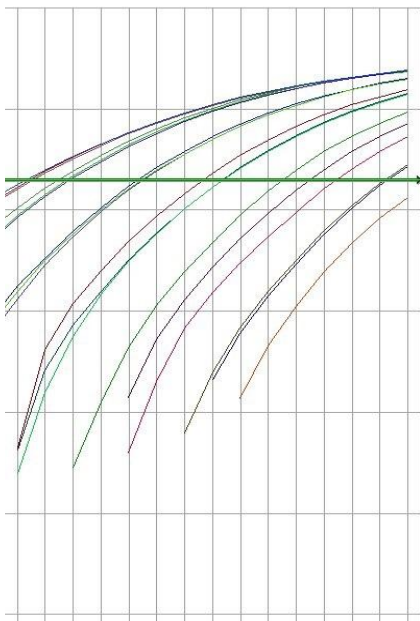


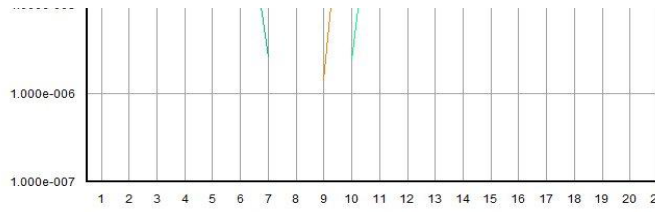
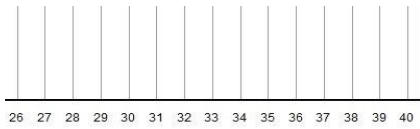
Selected Detector: All
Well(s): A10-A12,C10-C12
Document: skupina 3 (Standard Curve)

FBS vs. no FBS GAPDH a JunD



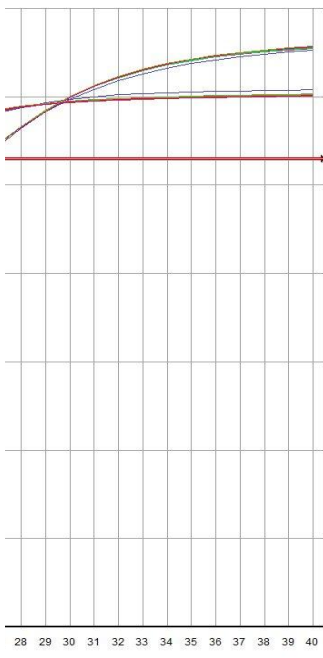
Vliv inhibitorů



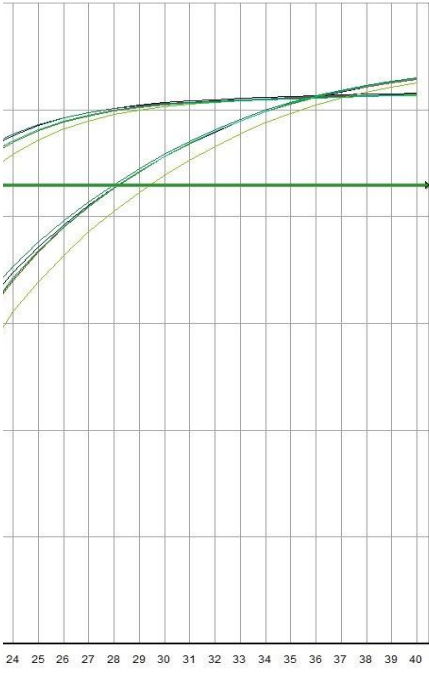


Selected Detector: All
Well(s): C10-C12,E10-E12,G10-G12
Document: skupina 3 (Standard Curve)

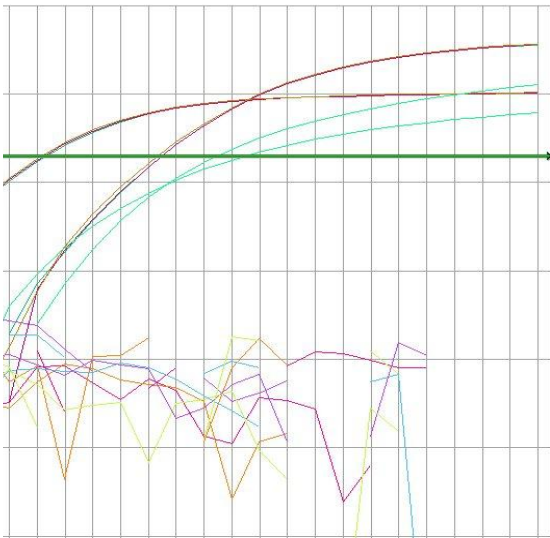
Cycle Numl

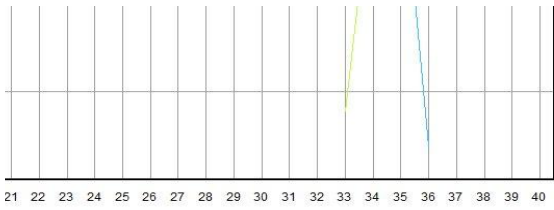


100



Cycle





ber