

Model Builder

Aplikovaná geoinformatika, jaro 2016

Lukáš HERMAN

Vytvoření nového modelu

The image illustrates the steps to create a new model in ArcGIS. It shows the 'Add Toolbox' dialog box, the 'ArcToolbox' panel, and a context menu for the 'cviceni_3' toolbox.

Left Panel (Toolboxes):

- Data Interoperability Tools
- Data Management Tools
- Editing Tools
- Geocoding Tools
- Geostatistical Analyst Tools
- Linear Referencing Tools
- Multidimension Tools
- Network Analyst Tools
- Parcel Fabric Tools
- Server Tools
- Schematics Tools
- Spatial Analyst Tools
- Spatial Statistics Tools
- Tracking Analyst Tools

Center Dialog (Add Toolbox):

- Look in: Data_cv3
- File list: cviceni_3.tbx
- Name: [Empty]
- Show of type: Toolboxes
- Buttons: Open, Cancel

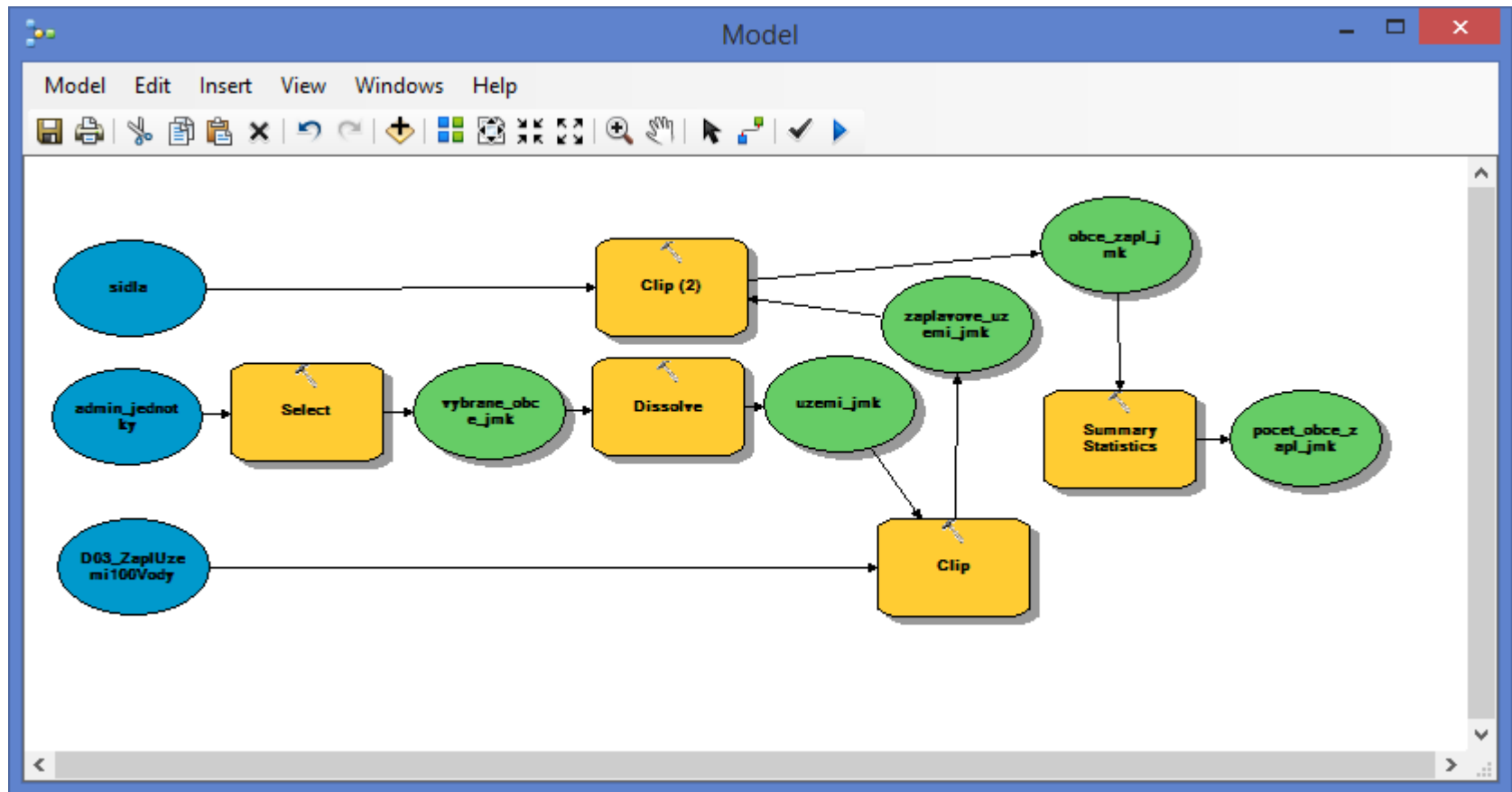
Right Panel (ArcToolbox):

- ArcToolbox
- 3D Analyst Tools
- Analysis Tools
- Cartography Tools
- Conversion Tools
- cviceni_3** (Selected)
- Model
- Data Interoperability Tools
- Data Management Tools
- Editing Tools
- Geocoding Tools
- Geostatistical Analyst Tools
- Linear Referencing Tools
- Multidimension Tools
- Network Analyst Tools
- Parcel Fabric Tools
- Server Tools
- Schematics Tools
- Spatial Analyst Tools
- Spatial Statistics Tools
- Tracking Analyst Tools

Context Menu (Over cviceni_3):

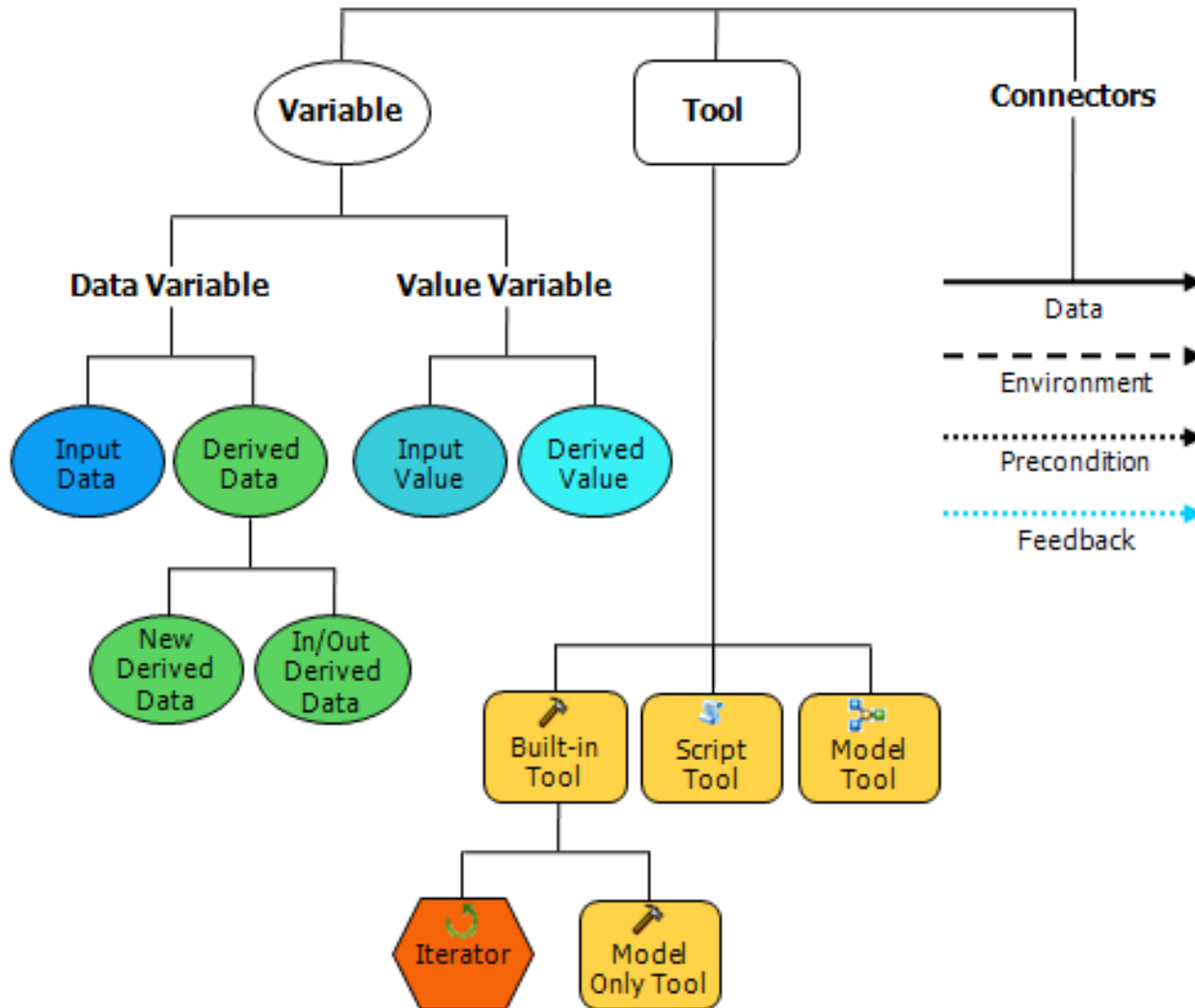
- Copy
- Paste
- Remove
- Rename
- Refresh
- Edit...
- Check Syntax...
- New** (Selected)
 - Toolset
 - Model...** (Selected)
 - New Model** (Selected)
 - Creates a new model tool
 - Add
 - Save As
 - Item Description...
 - Properties...

Model Builder - rozhraní

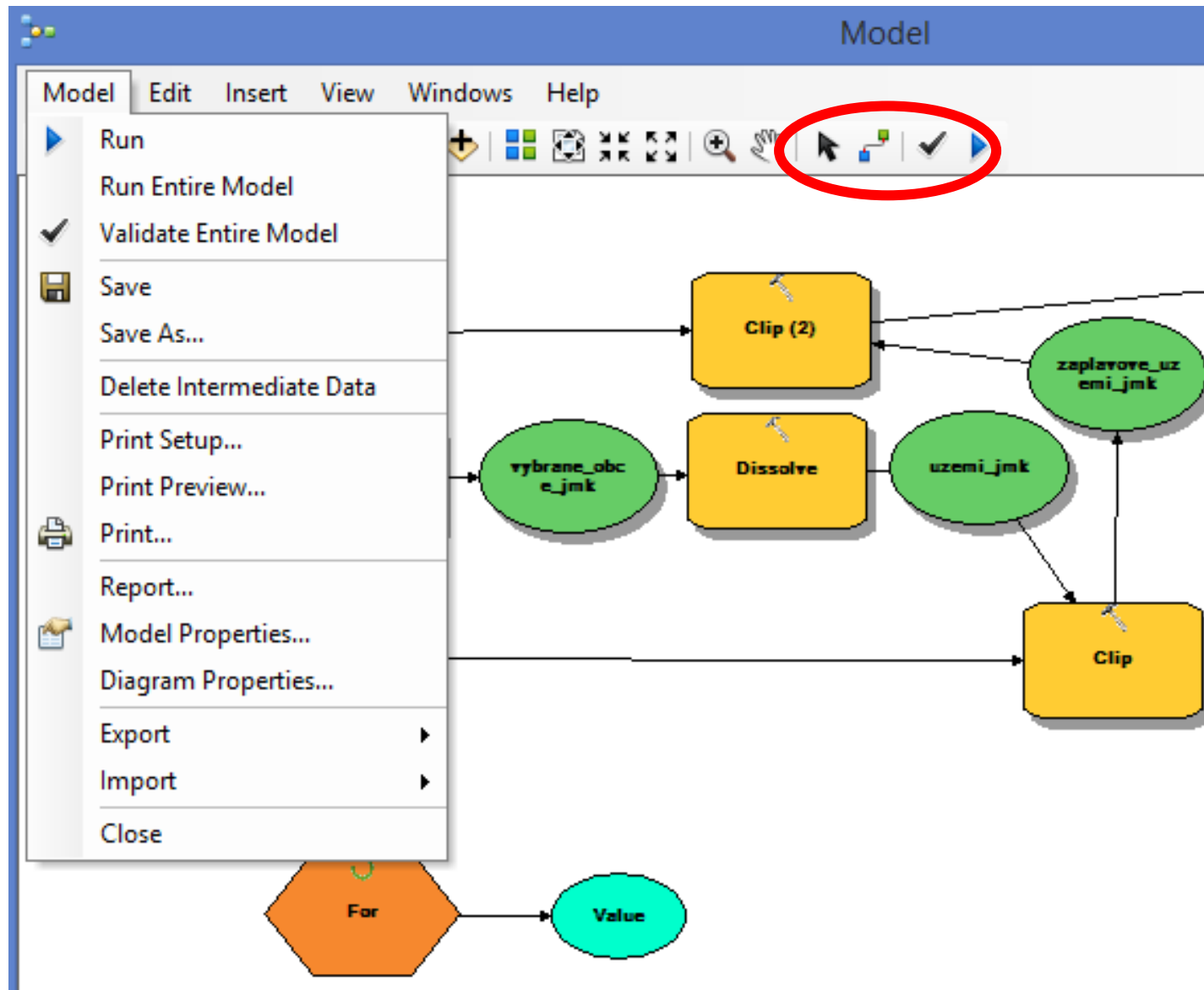


Funkce (Tools) i data (Variables) lze přetáhnout z Table of Content, respektive ze seznamu „ArcToolbox“. Rovněž lze jednotlivé prvky vkládat přes menu „Insert“

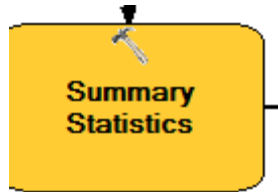
Model Builder - prvky



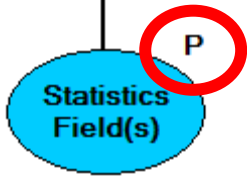
Propojení prvků a spuštění modelu



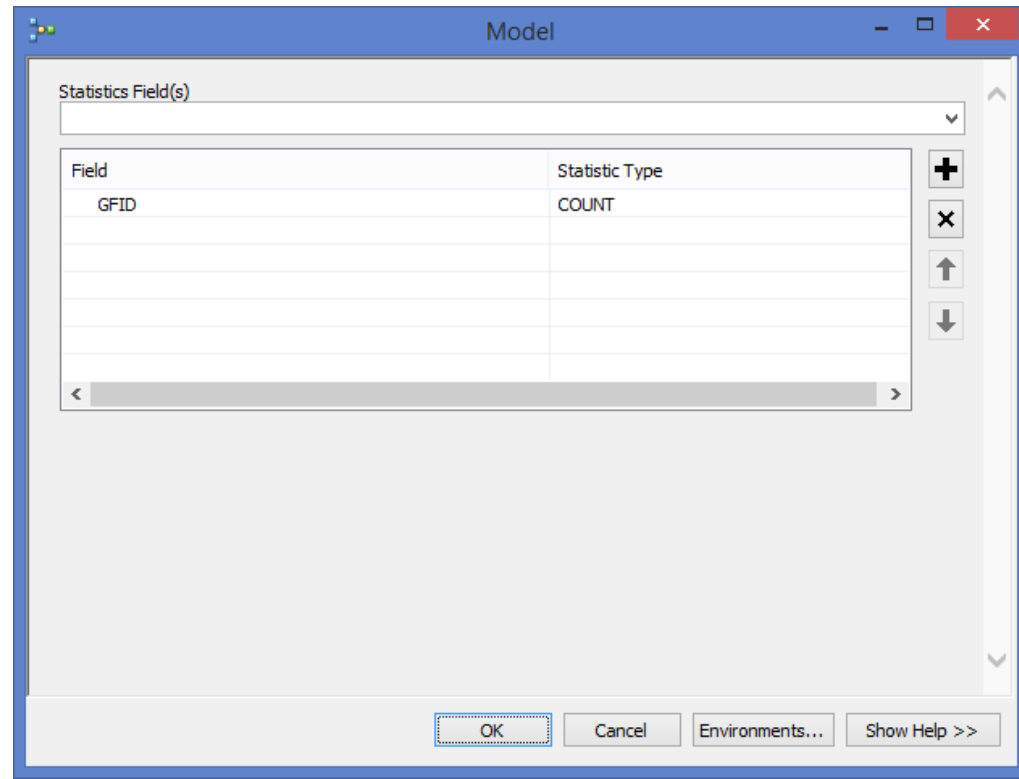
Parametry



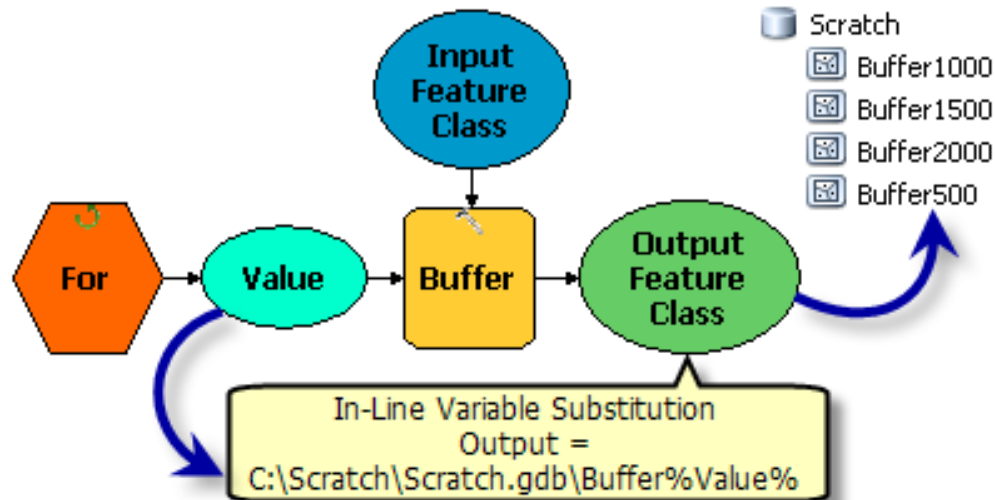
PTM – Make Variable – From Parameter



PTM – Model Parameter (check)



Iterace I.

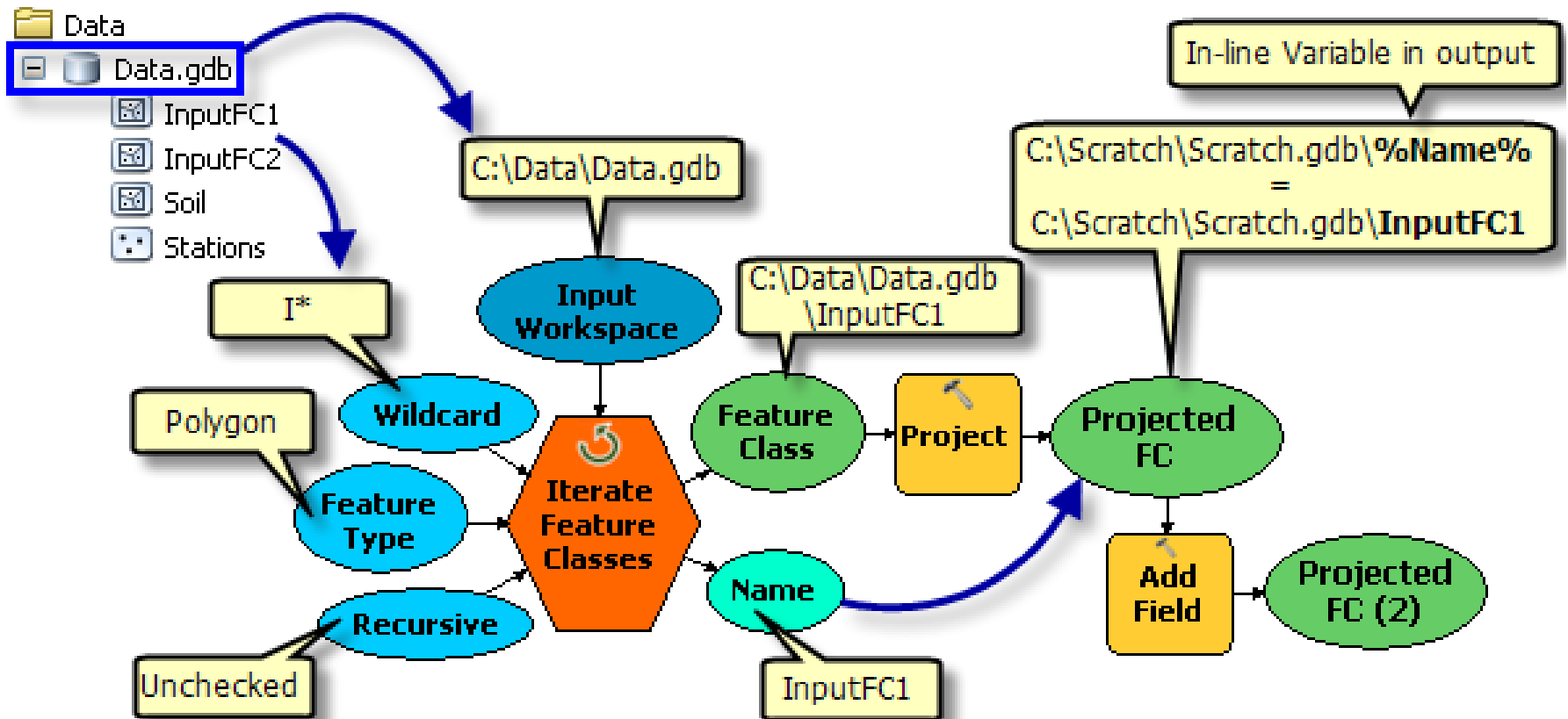


The screenshot shows the 'For' dialog box with the following fields:

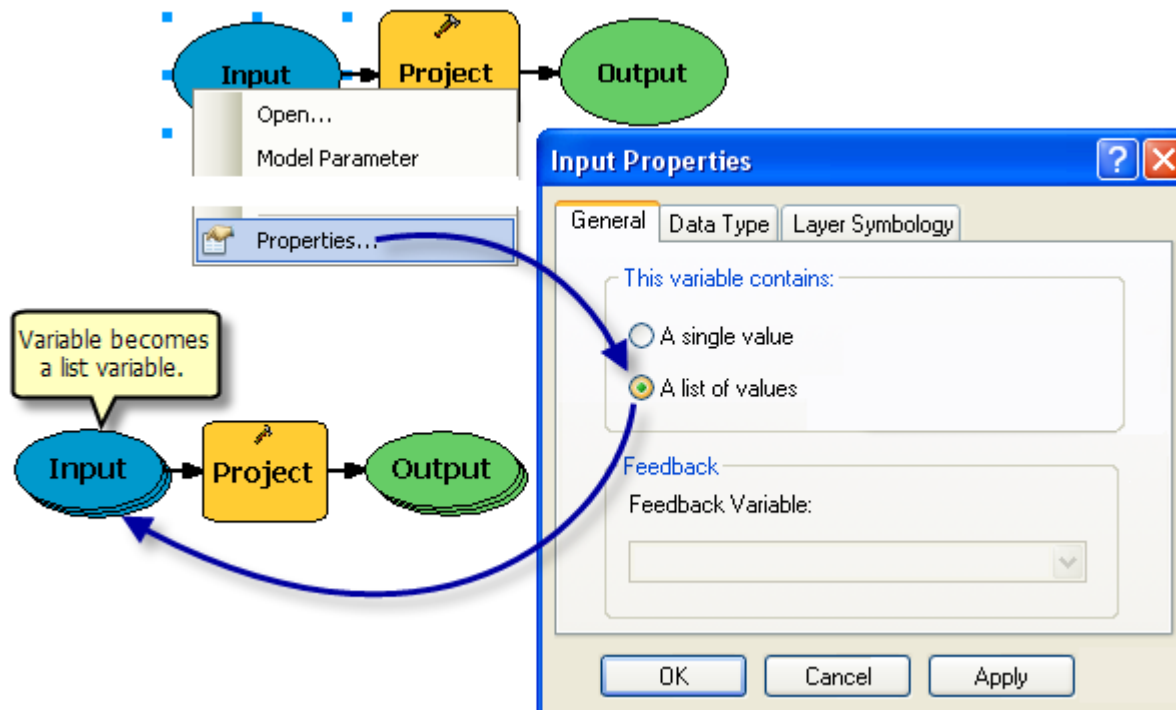
- From Value: 500
- To Value: 2000
- By Value: 500

Buttons at the bottom: OK, Cancel, Apply, Show Help >>

Iterace II.



Práce s více vrstvami



Podmínky

