



Research centre
for toxic compounds
in the environment

Ecotoxicology

Part 2 - HAZARDS & RISKS

Ludek Blaha + ecotox colleagues

cecoen



EUROPEAN UNION
EUROPEAN REGIONAL DEVELOPMENT FUND
INVESTING IN YOUR FUTURE



OP Research and
Development for Innovation



Ecotoxicology

Science of doses /
concentrations

HAZARDS vs RISKS



Research centre
for toxic compounds
in the environment

cetocoen



EUROPEAN UNION
EUROPEAN REGIONAL DEVELOPMENT FUND
INVESTING IN YOUR FUTURE

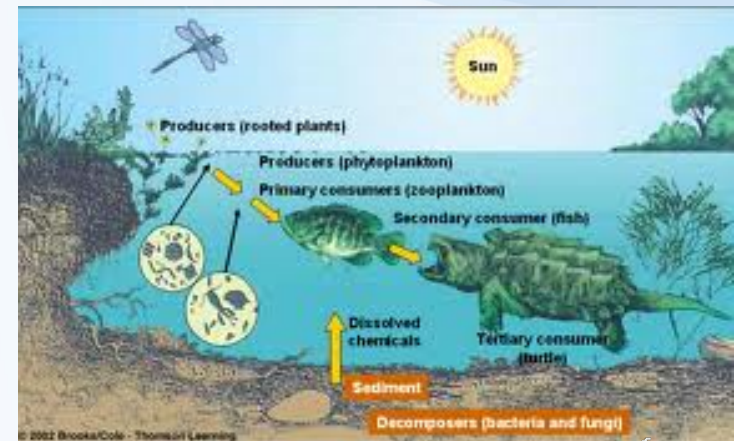


Assessment of chemical hazards

...to...

Humans
(TOXICOLOGY)

Other organisms
(ECOTOXICOLOGY)



Research centre
for toxic compounds
in the environment

cetocoen

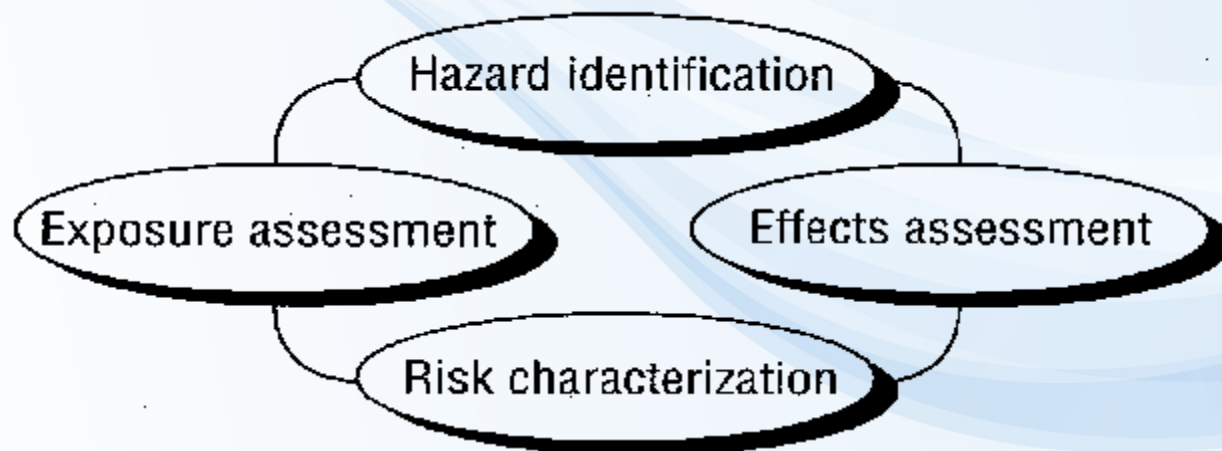


EUROPEAN UNION
EUROPEAN REGIONAL DEVELOPMENT FUND
INVESTING IN YOUR FUTURE



ASSESSMENT and MANAGEMENT of RISKS

risk ASSESSMENT →



MANAGEMENT →

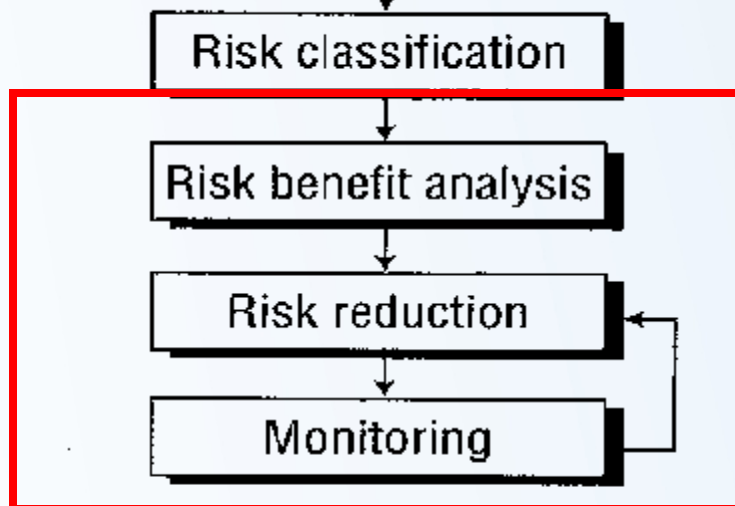


Figure 1.3. Steps in the risk management process.



WHAT IS HAZARD ? RISK?

RISKS

(**Probability** of the actual occurrence of hazard **under specific situation**)

HAZARDS

(**Inherited properties** of stressors ... including chemicals)

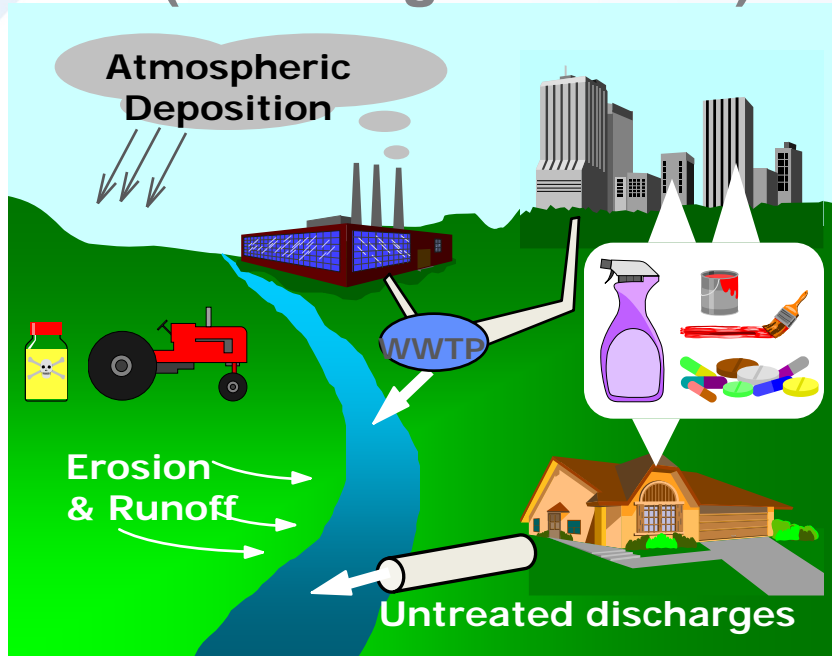
Table 1.5. Annual mortality rate associated with certain occurrences and activities in the Netherlands [23]

Activity/occurrence	Annual mortality rate	
Drowning as a result of dike collapse	10^{-7}	1 in 10 million
Bee sting	2×10^{-7}	1 in 5 million
Struck by lightning	5×10^{-7}	1 in 2 million
Flying	1.23×10^{-6}	1 in 814,000
Walking	1.85×10^{-5}	1 in 54,000
Cycling	3.85×10^{-5}	1 in 26,000
Driving a car	1.75×10^{-4}	1 in 5,700
Riding a motorbike	2×10^{-4}	1 in 1,000
Smoking cigarettes (1 packet a day)	5×10^{-3}	1 in 200

Cause – effect → Risk assessment

Exposure

(resulting from load)



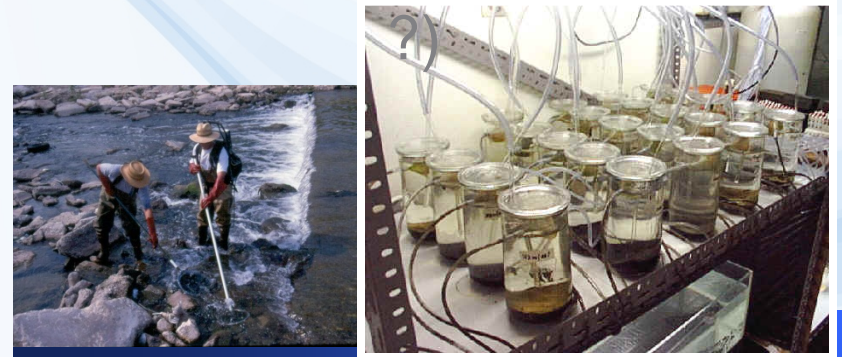
Predicted Environmental Concentration (PEC)



Research centre
for toxic compounds
in the environment

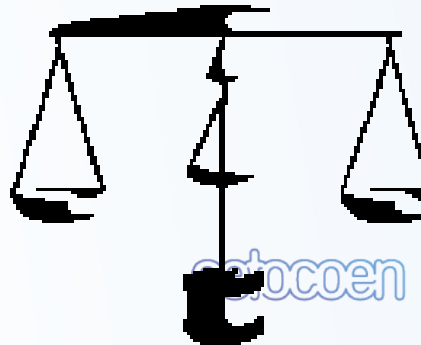
Effects

(what exposures cause effects)



Laboratory (and field) studies
Ecotoxicity tests

effective concentrations
(PNEC)



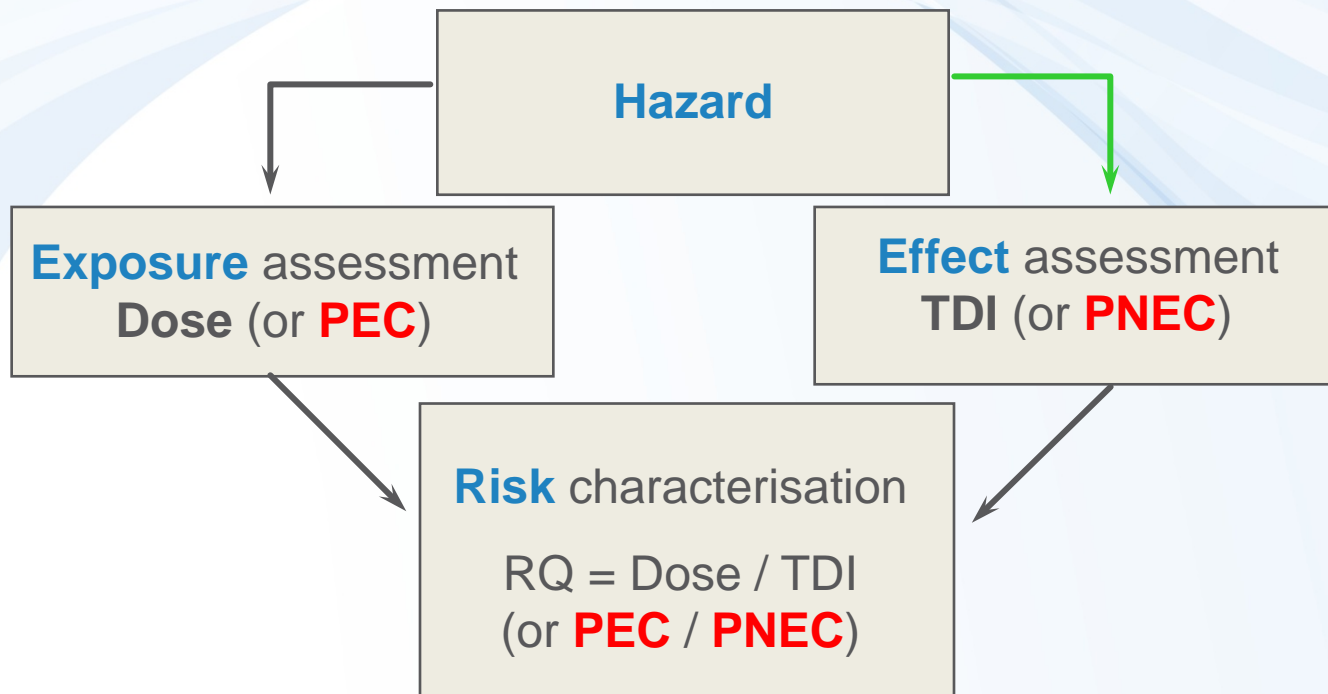
ecobcoen



EUROPEAN UNION
EUROPEAN REGIONAL DEVELOPMENT FUND
INVESTING IN YOUR FUTURE



Regulatory approach: risk assessment and management



RQ < 1

RQ > 1



Risk **management**

Regulatory approach: risk assessment and management

§ EU Directive 98/83/EC
(in addition to others)
pesticide in drinking water



No pesticide
in DW
>0.1 µg/L



Hazard

Exposure assessment
Dose (or PEC)

Effect assessment
TDI (or PNEC)

Risk characterisation
RQ = Dose / TDI
(or PEC / PNEC)



DW in city of Bruno ...
atrazine 0.15 µg/L

RQ < 1

RQ > 1

$$RQ = 0.15 / 0.1 = 1.5$$



Risk **management**

DWTP company
\$\$ for penalty
\$\$ for DWTP improvement
\$\$ lobbying to affect
legislation



Research centre
for toxic compounds
in the environment

cetocoen



EUROPEAN UNION
EUROPEAN REGIONAL DEVELOPMENT FUND
INVESTING IN YOUR FUTURE



„magnitude“ or „impact“ of actual risk



Vs.



Example - „P“ (probability) is the same for both events
- impact is very different

In ecotoxicology – e.g. fish species:

10% risks of malformations ... is compensated by large numbers of eggs
10% risks of feminization → much large impact on population



Research centre
for toxic compounds
in the environment

cetocoen



EUROPEAN UNION
EUROPEAN REGIONAL DEVELOPMENT FUND
INVESTING IN YOUR FUTURE



(Eco)Toxicology – science of „doses“

Paracelsus (1493 - 1541)



‘What is there which is not a poison?’

„Cause-effect paradigm“

- *All things are poison and nothing without poison.*
- *Solely **the dose determines** that a thing is not a **poison**.*



Research centre
for toxic compounds
in the environment

cetocoen



EUROPEAN UNION
EUROPEAN REGIONAL DEVELOPMENT FUND
INVESTING IN YOUR FUTURE



Toxicology – ultimate goal ?

To identify (or predict)
safe vs hazardous levels



Research centre
for toxic compounds
in the environment

cetocoen

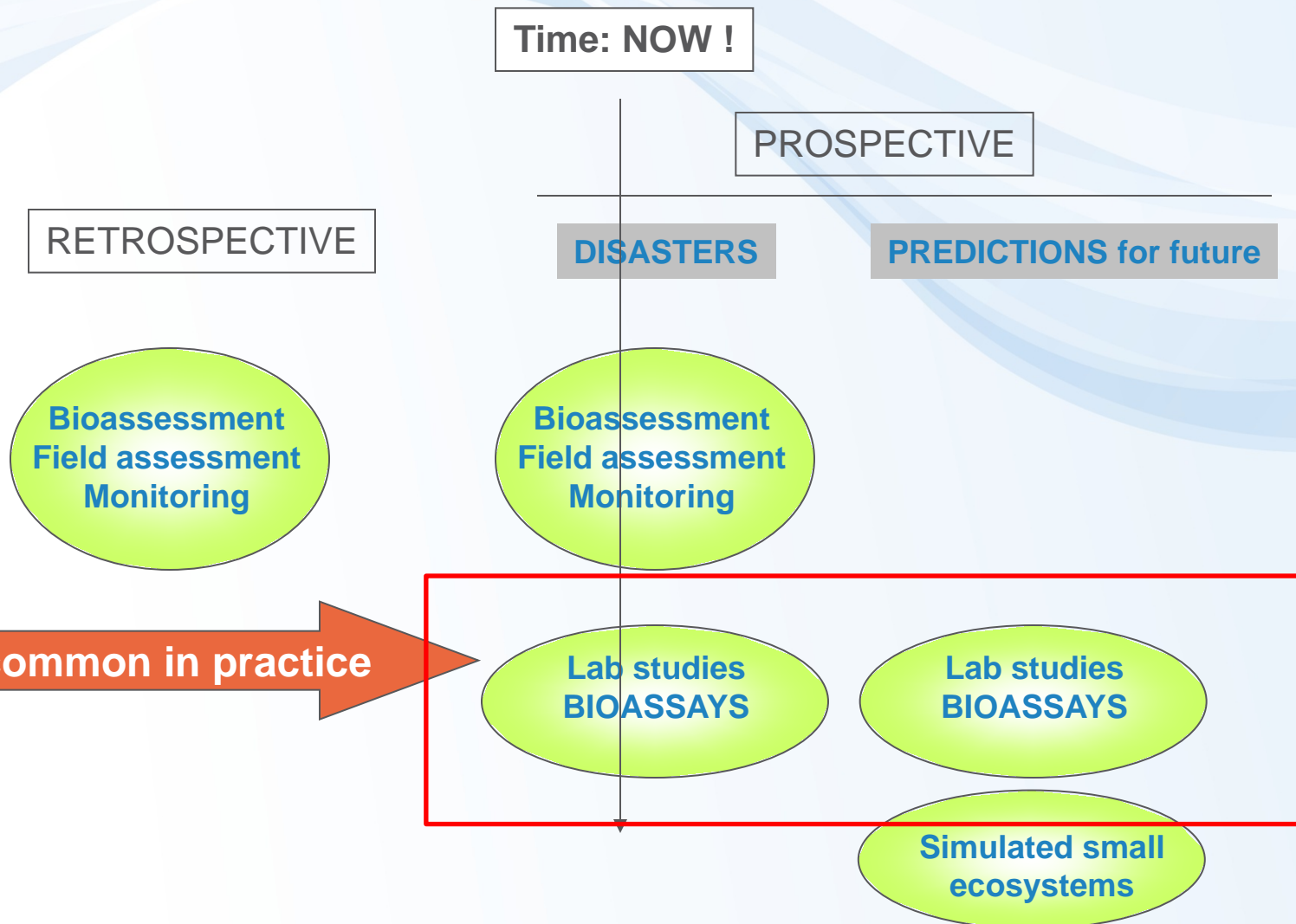


EUROPEAN UNION
EUROPEAN REGIONAL DEVELOPMENT FUND
INVESTING IN YOUR FUTURE



OP Research and
Development for Innovation

Ecotoxicology: what approaches are available?

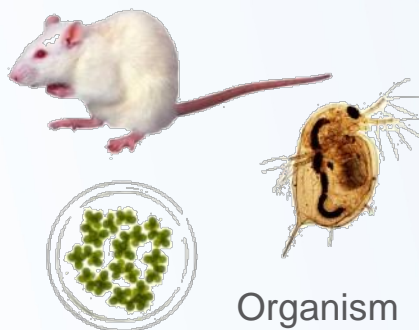


Hazard assessment

Traditionally – Evaluation of adverse effects using the whole organism models



Chemical



Organism



Adverse Effects

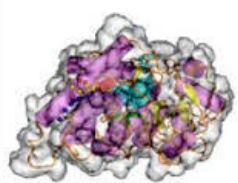
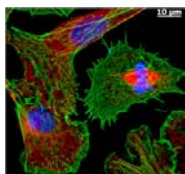
Death
Altered Reproduction
Inhibition of Growth

Tumorigenicity
Skin irritation

...



**REGULATORY FOCUS
(APICAL ENDPOINTS)**



Research centre
for toxic compounds
in the environment

cetocoen



EUROPEAN UNION
EUROPEAN REGIONAL DEVELOPMENT FUND
INVESTING IN YOUR FUTURE

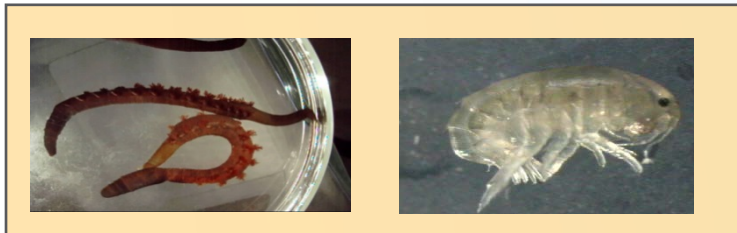


OP Research and
Development for Innovation

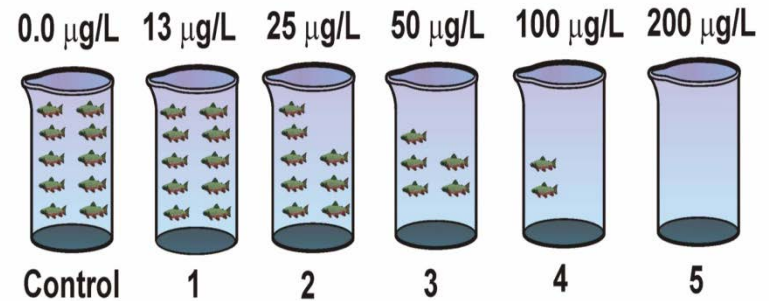
(Eco)Toxicology methods 1 - standardized assays



Exposure
to toxicant (for defined time)



Concentration:



96-hour LC50 = 50 µg/L

Effective doses
Effective concentrations



Research centre
for toxic compounds
in the environment

cetocoen



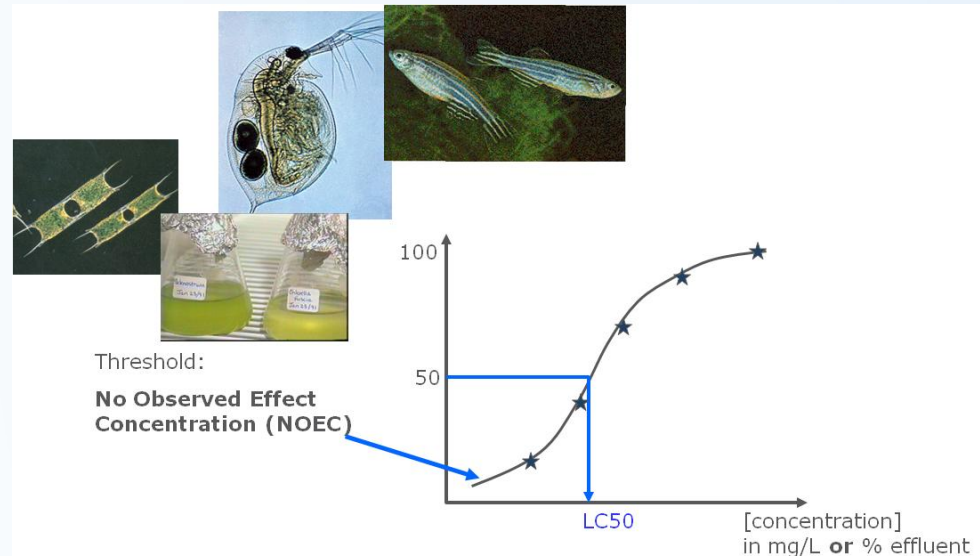
EUROPEAN UNION
EUROPEAN REGIONAL DEVELOPMENT FUND
INVESTING IN YOUR FUTURE



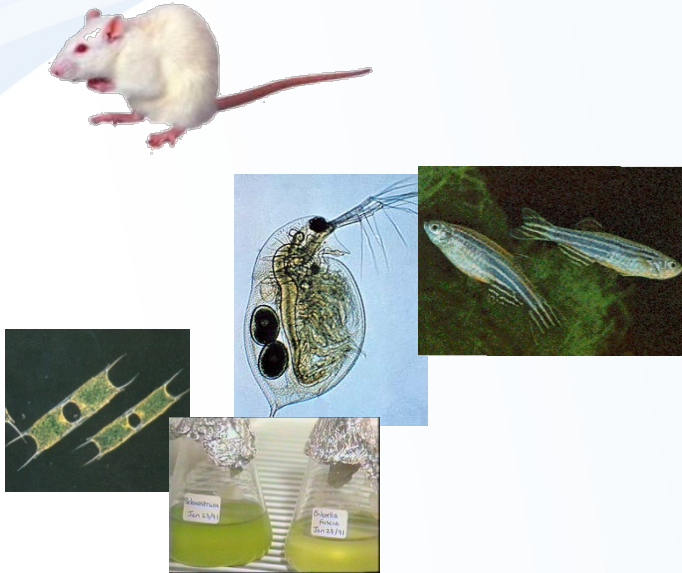
Ecotoxicology in current practice

- Most legislations on chemicals) (e.g. REACH, Pharmaceuticals, Pesticides) have very simple (basic) requirements
 - EC50 from acute toxicity
 - Of 3 basic assays
 - Algae
 - Daphnia
 - Fish

Ecotox database:
www.epa.gov/ecotox



Laboratory data and results

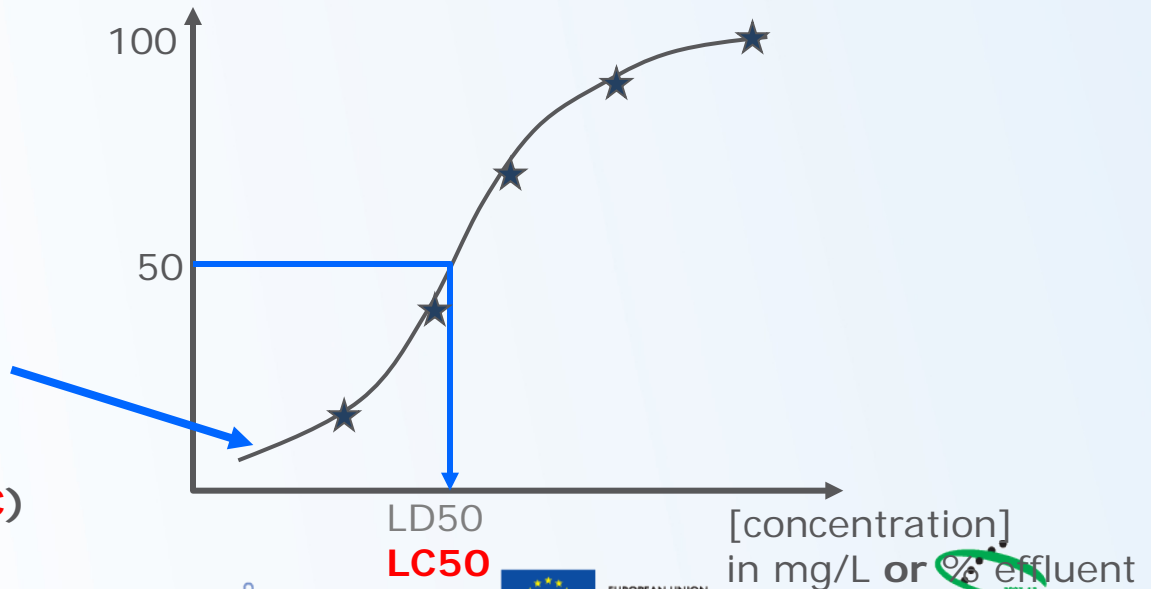


How are
LC50 from
ecotox assays
used ?

Threshold:

TOXICOLOGY No
Observable Adverse
Effect Level (NOAEL)

ECOTOXICOLOGY No
Observed Effect
Concentration (**NOEC**)



Ecotoxicology in current practice

- How to extrapolate 3 (or few more) EC50 values to get legally binding safe concentration, which is protecting virtually all organisms?



PNEC

(Predicted No Effect Concentration)

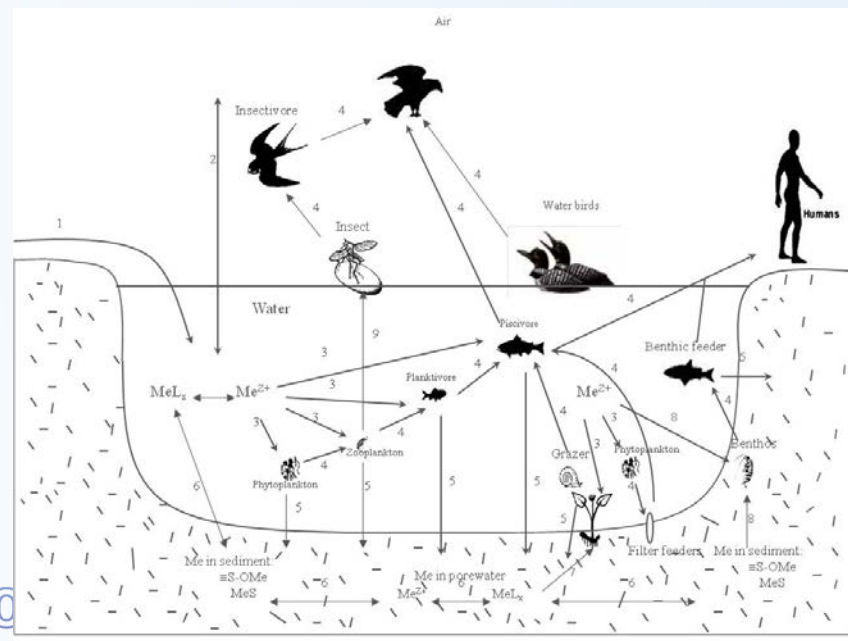
“value recommended by scientists”



EQS

(Environmental Quality Standard)

“value that occurs in legislation”



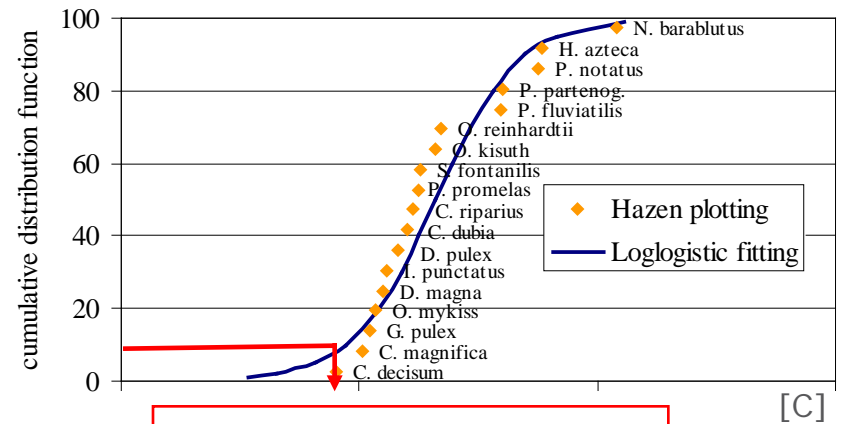
Extrapolation for Risk Assessment

(Eco)Toxicological data

Assessment / Extrapolation factors

Data	Assessment factor
L(E)C50 short-term toxicity tests	1000
NOEC for 1 long-term toxicity test	100
NOEC for additional long-term toxicity tests of 2 trophic levels	50
NOEC for additional long-term toxicity tests of 3 species of 3 trophic levels	10

Species sensitivity distribution (SSD)



PNEC



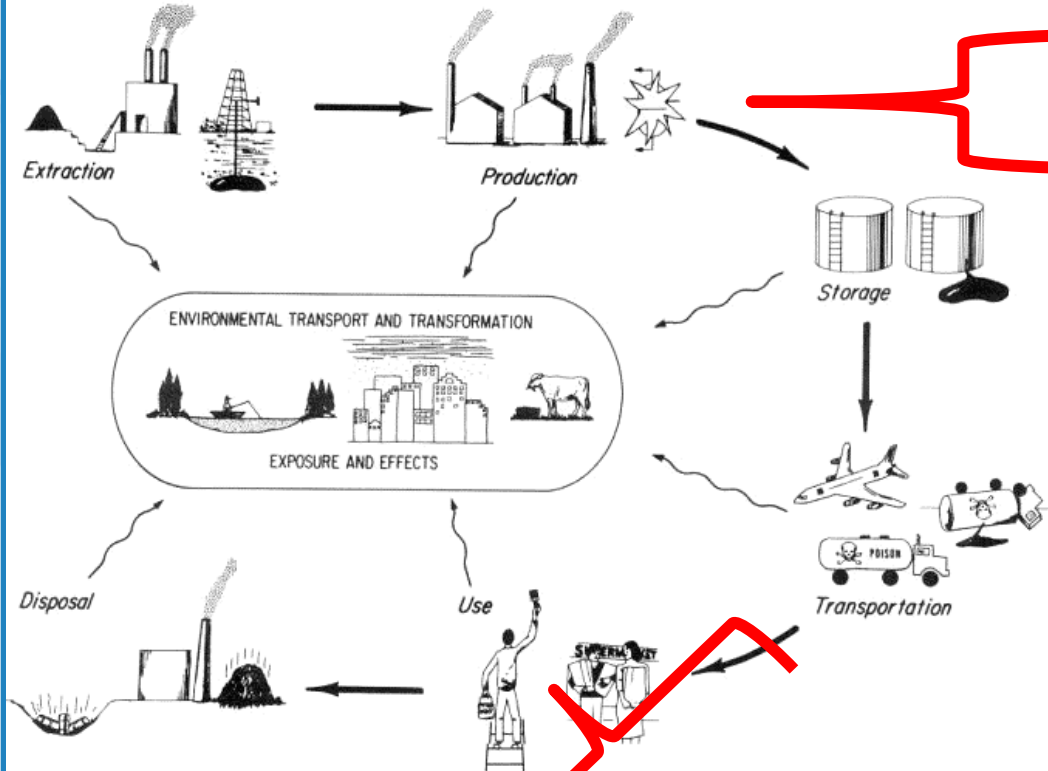
Research centre
for toxic compounds
in the environment

cetocoen



EUROPEAN UNION
EUROPEAN REGIONAL DEVELOPMENT FUND
INVESTING IN YOUR FUTURE





Chemical laws („bulk“)

- Industrial chemicals
- Cosmetics
- PPP (pesticides)
- Biocides
- Human pharmaceuticals
- Veterinary pharmaceuticals

nano
nano
nano
nano

§§

REACH (ECHA)

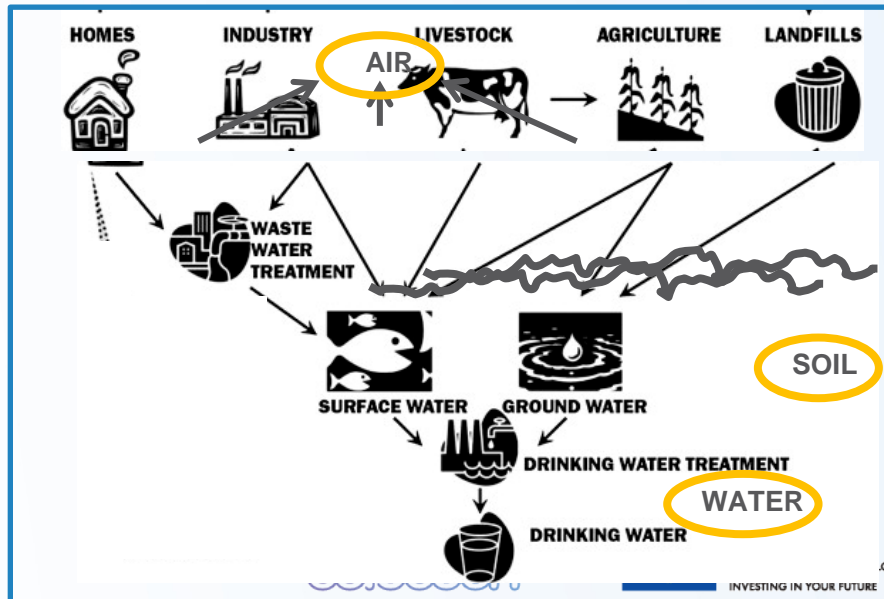
PPP (EFSA)

MPs (EMA)

MIXTURES!

Two §§ approaches:

- Prospective (chemicals...)
- Retrospective (mixtures ...)



§§

WFD – surface w.
GWD – ground w.

Air quality

Food and feed

Soil & Sediments

Wastes
OP Research and Development for Innovation



Research centre for toxic compounds in the environment

Notes on practical testing

- Testing chemicals
 - Traditional / bioassays developed to assess **individual chemicals**
 - **Advantages**: Standardized approaches
 - **Disadvantage**: Limited ecological relevance
 - often **acute** tests only
 - „too standardized...“ (? Less representative ?)
 - does not assess/consider bioavailability
 - no consideration of mixture effects
 - no consideration of specific modes of action
 - no consideration of ecological situation
- Example: Acute (96h) fish toxicity assay with ethanol
 - No deaths (but fish are passive – slow swimming) → OK ?
 - Real life: easy prey → population decline



Notes on practical testing

- Testing toxicity of natural **contaminated matrices**
 - Rather new in ecotoxicology – many open challenges
 - Whole effluent toxicity testing (WET)
 - Contact soil toxicity assays
 - More complex and more complicated
 - „cause-effects“ often not clear
 - Natural variability in matrices
 - Algal tests - nutrients (Nitrogen, Phosphorus) >> Toxic compounds



Results of ecotoxicology

WHAT IS IT GOOD FOR ?

SOLVING PRACTICAL PROBLEMS



Research centre
for toxic compounds
in the environment

cetocoen



EUROPEAN UNION
EUROPEAN REGIONAL DEVELOPMENT FUND
INVESTING IN YOUR FUTURE



Example 1

Application of ecotoxicity results (EC_x → EQs) in regulatory context

European Water FrameworkDIRECTIVE



Research centre
for toxic compounds
in the environment

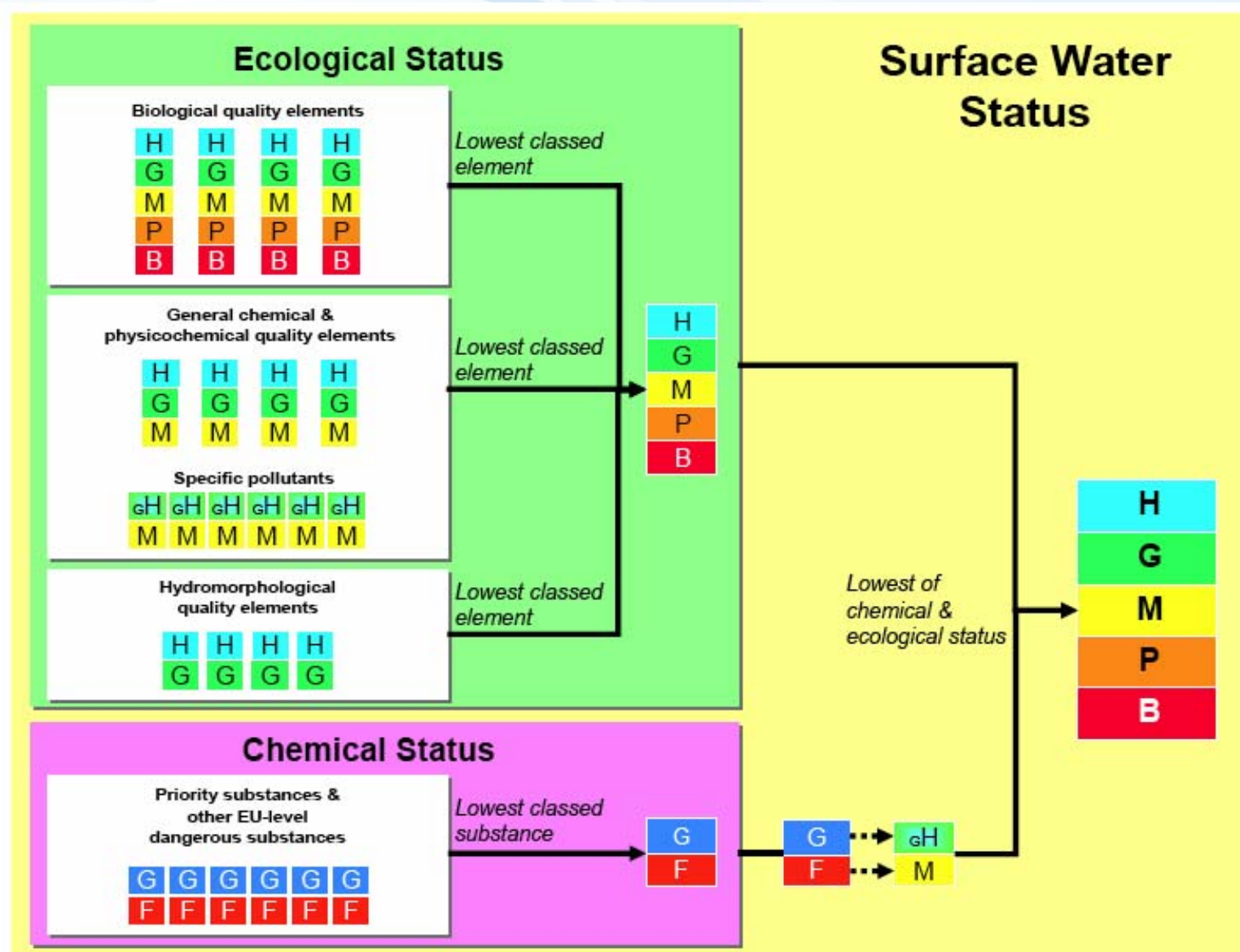
cetocoen



EUROPEAN UNION
EUROPEAN REGIONAL DEVELOPMENT FUND
INVESTING IN YOUR FUTURE



EQS in reality – example EU Water Framework Directive



List of priority compounds EU WFD (selection/examples)

Most recent (2015)

44 priority compounds (table here)

+ additional “watch list” → see further

AA: annual average;

MAC: maximum allowable concentration.

Unit: [µg/l]

PRACTICE:

Chemical measurements vs limits (EQs)

(1)	(2)	(3)	(4)	(5)	(6)	(7)
No	Name of substance	CAS number ⁽¹⁾	AA-EQS ⁽²⁾ Inland surface waters ⁽³⁾	AA-EQS ⁽²⁾ Other surface waters	MAC-EQS ⁽⁴⁾ Inland surface waters ⁽³⁾	MAC-EQS ⁽⁴⁾ Other surface waters
(1)	Alachlor	15972-60-8	0,3	0,3	0,7	0,7
(2)	Anthracene	120-12-7	0,1	0,1	0,4	0,4
(3)	Atrazine	1912-24-9	0,6	0,6	2,0	2,0
(4)	Benzene	71-43-2	10	8	50	50
(5)	Brominated diphenylether ⁽⁵⁾	32534-81-9	0,0005	0,0002	not applicable	not applicable
(6)	Cadmium and its compounds (depending on water hardness classes) ⁽⁶⁾	7440-43-9	≤ 0,08 (Class 1) 0,08 (Class 2) 0,09 (Class 3) 0,15 (Class 4) 0,25 (Class 5)	0,2	≤ 0,45 (Class 1) 0,45 (Class 2) 0,6 (Class 3) 0,9 (Class 4) 1,5 (Class 5)	≤ 0,45 (Class 1) 0,45 (Class 2) 0,6 (Class 3) 0,9 (Class 4) 1,5 (Class 5)
(6a)	Carbon-tetrachloride ⁽⁷⁾	56-23-5	12	12	not applicable	not applicable

Watch list of substances for Union-wide monitoring as set out in Article 8b of Directive 2008/105/EC

Name of substance/group of substances	CAS number ⁽¹⁾	EU number ⁽²⁾	Indicative analytical method ⁽³⁾ ⁽⁴⁾ ⁽⁵⁾	Maximum acceptable method detection limit (ng/l)
17-Alpha-ethinylestradiol (EE2)	57-63-6	200-342-2	Large-volume SPE — LC-MS-MS	0,035
17-Beta-estradiol (E2), Estrone (E1)	50-28-2, 53-16-7	200-023-8	SPE — LC-MS-MS	0,4
Diclofenac	15307-86-5	239-348-5	SPE — LC-MS-MS	10
2,6-Ditert-butyl-4-methylphenol	128-37-0	204-881-4	SPE — GC-MS	3 160
2-Ethylhexyl 4-methoxycinnamate	5466-77-3	226-775-7	SPE — LC-MS-MS or GC-MS	6 000
Macrolide antibiotics ⁽⁶⁾			SPE — LC-MS-MS	90
Methiocarb	2032-65-7	217-991-2	SPE — LC-MS-MS or GC-MS	10
Neonicotinoids ⁽⁷⁾			SPE — LC-MS-MS	9
Oxadiazon	19666-30-9	243-215-7	LLE/SPE — GC-MS	88
Tri-allate	2303-17-5	218-962-7	LLE/SPE — GC-MS or LC-MS-MS	670

Another example where
ecotoxicology results are used

**European strategy
how to deal with chemicals
REACH**



Research centre
for toxic compounds
in the environment

cetocoen



EUROPEAN UNION
EUROPEAN REGIONAL DEVELOPMENT FUND
INVESTING IN YOUR FUTURE



REACH

Registration, Evaluation and Authorisation of Chemicals

- 27-2-2001: White Paper on the Strategy for Future Chemicals Policy
- 23-10-2003: Commission's proposal REACH
- December 2008: Pre-registration mandatory (all chemicals in EU must be registered at ECHA)


 An agency of the European Union [Document library](#) | [News and Even](#)

ECHA
EUROPEAN CHEMICALS AGENCY

[About Us](#) | [Regulations](#) | [Addressing Chemicals of Concern](#) | [Information on Chemicals](#)

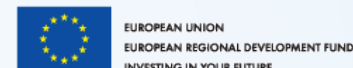
ECHA > Homepage

European Chemicals
Agency
(<http://echa.europa.eu>)

 15/06/2015 - Press release
Two new substances of very high concern (SVHCs) added to the Candidate List

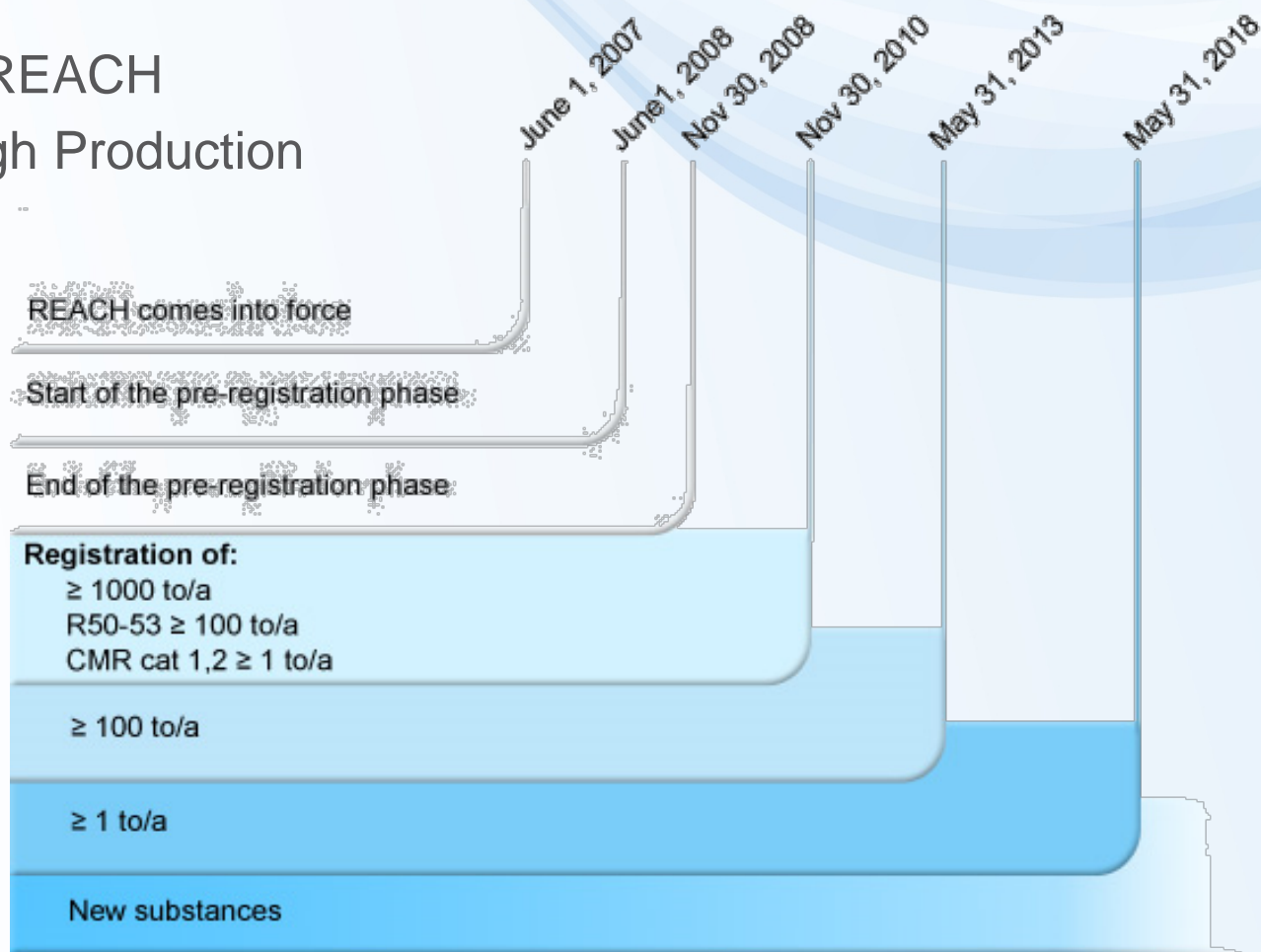
ECHA took the decision to include two substances on the Candidate List based on proposals by Sweden and the Netherlands respectively, following the SVHC identification process with involvement of the Member State Committee. The Candidate List now contains 163 substances. Of those, 31 have subsequently been included in the Authorisation List.

tocon



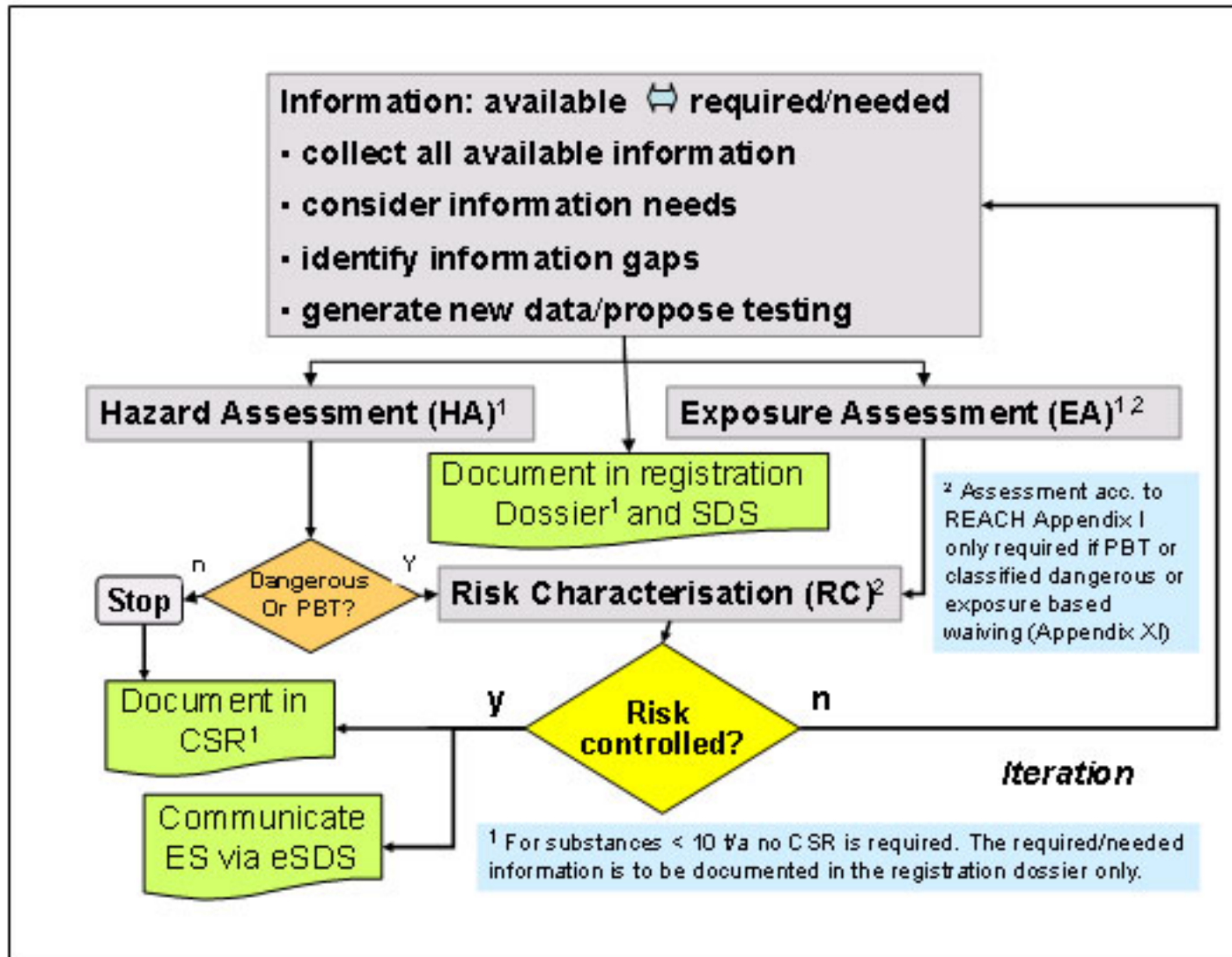
Existing substances and REACH

- > 95,000,000 known chemicals
(...and counting <http://www.cas.org/>)
- 100,000 substances in EINECS (i.e. commercial use)
- 30,000 relevant for REACH
- cc 3000 HPVCs (High Production Volume Chemicals)



REACH legislation in EU

Registration, Evaluation and Authorisation and Restriction of Chemicals



REACH: what data type must be registered?



- **Physico-chemical properties, e.g.:**
 - Vapour pressure, boiling point, Kow,...
- **Human toxicology, e.g.:**
 - Acute and chronic toxicity, skin irritation, carcinogenicity,...
- **Environment/ Ecotoxicological information, e.g.:**
 - Acute and/or chronic toxicity for aquatic organisms, biodegradation, ...



REACH: testing



Classification categories	Test requirements in REACH			
	>1t		>10t	>100t
	New or prioritised substance			
Reproductive toxicity (a generation test)	no	no	no	no
Chronic toxicity and cancer	no	no	no	(yes)
90-day study	no	no	no	(yes)
28-day study	no	no	(yes)	yes
Acute toxicity (a second route of exposure)	no	no	yes	yes
Acute toxicity	no	yes	yes	yes
Skin allergy	no	yes	yes	yes
Skin and eye irritation	no	yes	yes	yes
Mutagenicity (in vitro)	no	yes	yes	yes
Further ecotoxicity studies (incl long term tests)	no	no	no	yes
Acute toxicity: fish	no	no	yes	yes
Acute toxicity: algae	no	yes	yes	yes
Acute toxicity: Daphnia	no	yes	yes	yes
Biotic degradation	no	yes	yes	yes

- Total costs: 2,8 to 5,6 billion € (industry pays)
- Testing costs (50-60% of total): 86% for Human, 14% Ecotox



What assays and how exactly?

Depends on legislation (... of course !)

... but current EU legislations tend to be harmonized
(use similar approaches)

→ **example of REACH**



Assays must be **STANDARDIZED**

for REACH should follow **OECD Guidelines**

Other standardization agencies

(also include toxicity tests) e.g. ISO, ASTM



Research centre
for toxic compounds
in the environment

cetocoen



EUROPEAN UNION
EUROPEAN REGIONAL DEVELOPMENT FUND
INVESTING IN YOUR FUTURE



OP Research and
Development for Innovation

OECD guidelines for testing of chemicals

- 5 main sections
 - Section 1: Physical Chemical Properties
 - Section 2: **Effects on Biotic Systems**
(i.e. Ecotoxicity)
 - Section 3: Degradation and Accumulation
 - Section 4: **Health Effects**
(i.e. Toxicity)
 - Section 5: Other Test Guidelines



SECTION 2 - Aquatic organisms

Test No. 201: Alga, Growth Inhibition Test	11 July 2006
Test No. 221: Lemna sp. Growth Inhibition Test	11 July 2006
Test No. 202: Daphnia sp. Acute Immobilisation Test	23 Nov 2004
Test No. 211: Daphnia magna Reproduction Test	16 Oct 2008
Test No. 203: Fish, Acute Toxicity Test	17 July 1992
Test No. 204: Fish, Prolonged Toxicity Test: 14-Day Study	04 Apr 1984
Test No. 210: Fish, Early-Life Stage Toxicity Test	17 July 1992
Test No. 212: Fish, Short-term Toxicity Test on Embryo and Sac-Fry Stages	21 Sep 1998
Test No. 215: Fish, Juvenile Growth Test	21 Jan 2000
Test No. 229: Fish Short Term Reproduction Assay	08 Sep 2009
Test No. 230: 21-day Fish Assay	08 Sep 2009
Test No. 231: Amphibian Metamorphosis Assay	08 Sep 2009

SECTION 4 – Human health effects

Test No. 401: Acute Oral Toxicity

Test No. 402: Acute Dermal Toxicity

Test No. 403: Acute Inhalation Toxicity

Test No. 404: Acute Dermal Irritation/Corrosion

Test No. 405: Acute Eye Irritation/Corrosion

Test No. 406: Skin Sensitisation

Test No. 407: Repeated Dose 28-day Oral Toxicity Study in Rodents

Test No. 408: Repeated Dose 90-Day Oral Toxicity Study in Rodents

Test No. 409: Repeated Dose 90-Day Oral Toxicity Study in Non-Rodents

Test No. 410: Repeated Dose Dermal Toxicity: 21/28-day Study

Test No. 411: Subchronic Dermal Toxicity: 90-day Study

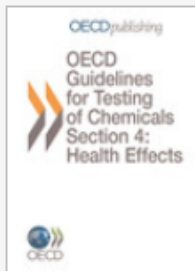
Test No. 412: Subacute Inhalation Toxicity: 28-Day Study



OECD Guidelines for the Testing of Chemicals, Section 4

Health Effects

[Hide](#) / [Show Abstract](#)



The *OECD Guidelines for the Testing of Chemicals* is a collection of about 150 of the most relevant internationally agreed testing methods used by government, industry and independent laboratories to identify and characterise potential hazards of chemicals. They are a set of tools for professionals, used primarily in regulatory safety testing and subsequent chemical and chemical product notification, chemical registration and in chemical evaluation. They can also be used for the selection and ranking of candidate chemicals during the development of new chemicals and products and in toxicology research. This group of tests covers health effects.









Also available in [French](#)

English

ISSN: 2074-5788 (online)

DOI: 10.1787/20745788

[Hide](#) / [Show all Abstracts](#)

Mark	Date	Title	Click to Access
<input type="checkbox"/>	11 Sep 2006	Summary of Considerations in the Report from the OECD Expert Groups on Short Term and Long Term Toxicology OECD	 PDF  READ
<input type="checkbox"/>	24 Feb 1987	Test No. 401: Acute Oral Toxicity OECD	 PDF  READ
<input type="checkbox"/>	24 Feb 1987	Test No. 402: Acute Dermal Toxicity OECD	 PDF  READ
<input type="checkbox"/>	08 Sep 2009	Test No. 403: Acute Inhalation Toxicity OECD	 PDF  READ



Try it! ... download and study your guideline for free!



Research centre
for toxic compounds
in the environment

ecotoxcoen



EUROPEAN UNION
EUROPEAN REGIONAL DEVELOPMENT FUND
INVESTING IN YOUR FUTURE



Risks of chemicals: a balancing act

between perception, uncertainties, science and pragmatism?

Final considerations



Research centre
for toxic compounds
in the environment

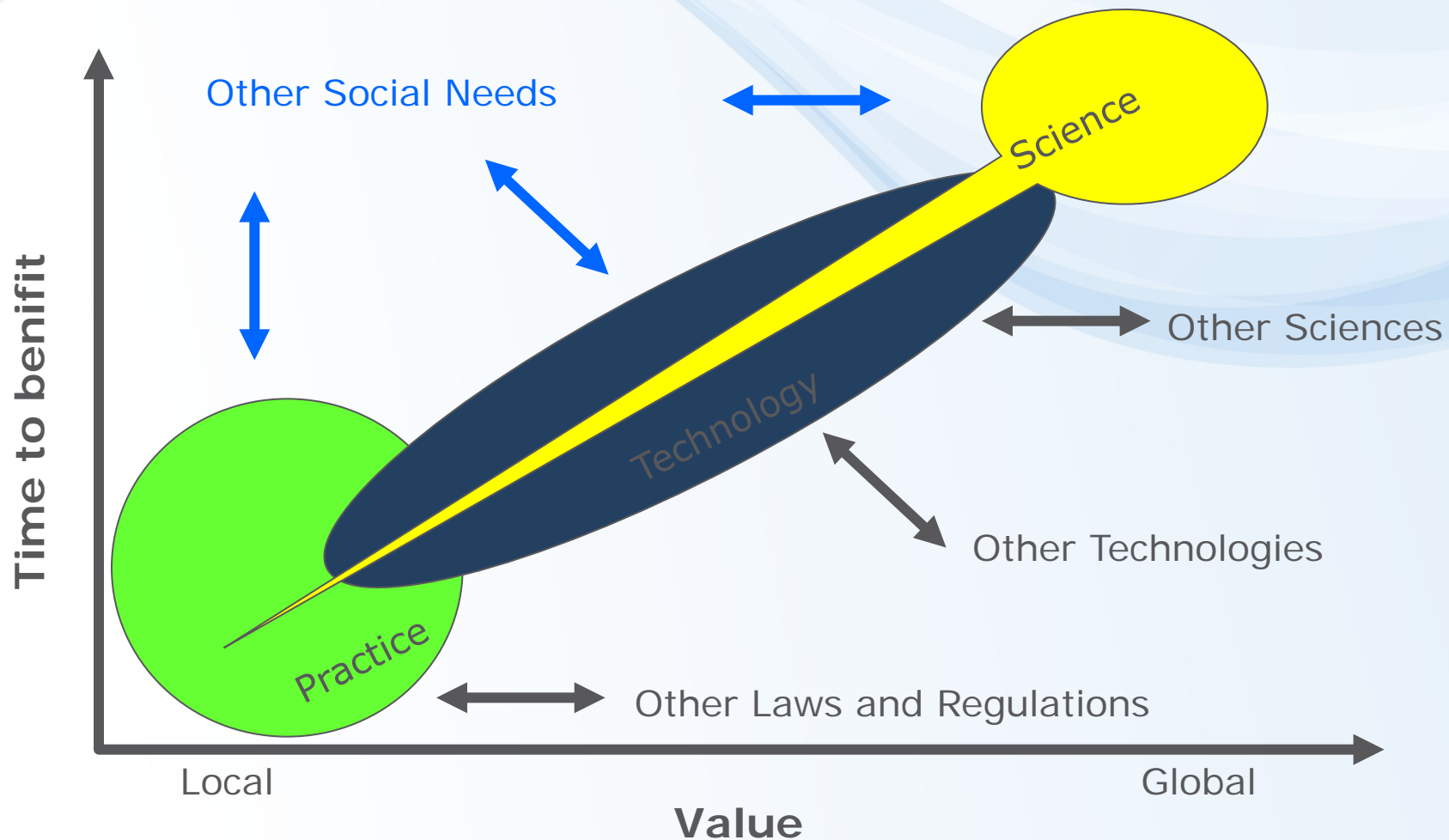
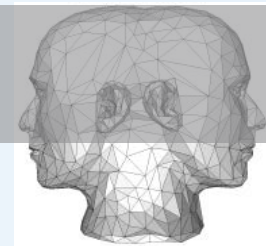
cetocoen



EUROPEAN UNION
EUROPEAN REGIONAL DEVELOPMENT FUND
INVESTING IN YOUR FUTURE

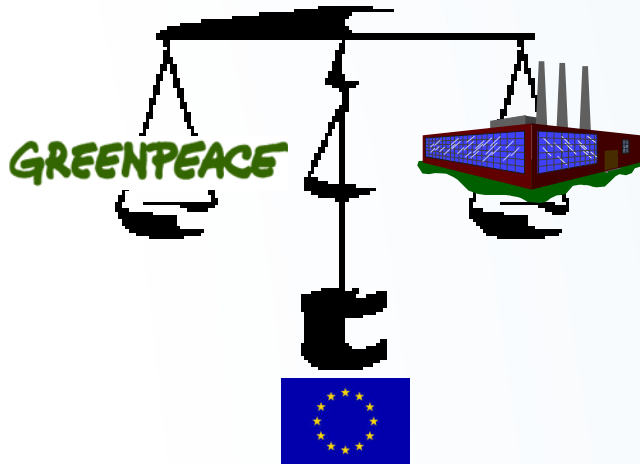


SOCIETY – RISKS vs BENEFITS (!)



Society is a balancing act ...

Scientists should
contribute (provide valid data)
for decision making



Scientists



Research centre
for toxic compounds
in the environment

cetocoen



EUROPEAN UNION
EUROPEAN REGIONAL DEVELOPMENT FUND
INVESTING IN YOUR FUTURE



WRAP UP and take home message – part 2

- What are hazards vs risks?
 - Risk assessment and management?
 - IMPACTS of risks? Risks vs benefits?
- How are the risks calculated
 - By comparing EXPOSURES (PEC) with HAZARDS (PNEC)
- How are hazards assessed?
 - By toxicity assays
 - there are 3 most widely used!
 - They must be done by standardized approaches (OECD guidelines)
 - What are results of toxicity assays (IC_x, NOEC, LOEC)?
 - How are the results used?
 - Predictions of PNEC (by application of AFs)
 - Regulatory acceptance → EQS
- Know examples of ecotox applications
 - PNEC (EQs) in Water framework directive
 - Predictive risk assessment in REACH regulation

