

Cross-Border Cooperation Südböhmen/Waldviertel Jihočeský kraj/Waldviertel

Armin Schneilinger, Tim Hunger

Regions involved



http://2007-2013.at-cz.eu/at-cz/img/Basemap_mod_metis_V1.jpg

Historical Facts

- 1989 Fall of the Iron Curtain
- 1992 Dissolution into Czech Republic and Slovak Republic
- 1995 Austria joined the EU
- 2004 Czech Republic joined the EU
- 2008 Czech Republic signed the Schengen Agreement

Financing instruments

- Europäischer Struktur- und Investitionsfonds (ESI)

Objectives: ...improving the economic well-being of regions

...avoid and reduce regional disparities

EFRE, ESF, ELER, EMFF

Support program

- LEADER (ELER) → Support local development and local programs
- Interreg (EFRE) → EUREGIO
- Silvanortica → Kleinprojektfonds

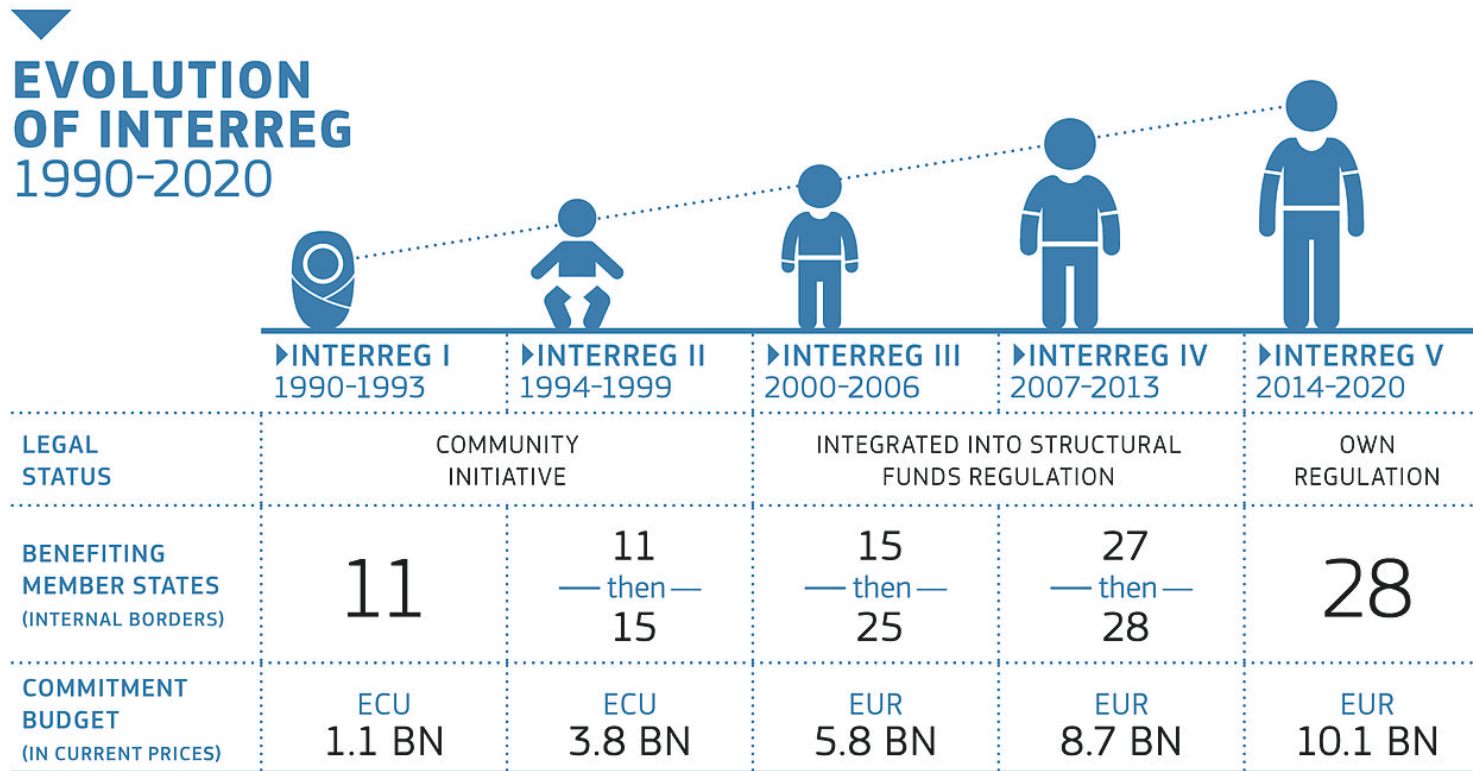
INTERREG

- Sponsored by EFRE and involved in ETZ
- Objectives: reducing regional disparities and convergence
infrastructure, environmental protection, land-use-planning

3 orientations: A – cross-border cooperation
 B – transnational cooperation
 C – interregional cooperation



History of INTERREG



https://en.wikipedia.org/wiki/Interreg#/media/File:Evolution_of_INTERREG_1990-2020.jpg

Economic Projects

- Wirtschaftsplattform ERSN (silvanortica, 2010 - 2013)
- Glasherstellung in AT und CZ (Waldviertelakademie, 2014)
- Tourismuszentrale Südmähren (Iron Curtain Trail, Euro Velo 13)



<https://www.google.de/search?q=iron+curtain+trail+velo+13&biw=1366&bih=638>

Research Projects

- ETZ – Projekt Stories (Waldviertelakademie, 2007-2013)
- Historikertage (Waldviertelakademie, 2016 – Neuorganisation)
- Demographical change Waldviertel – Vysocina, 2013 NÖ
Landesakademie + Wallenberger und Linhard)

Infrastructure Projects

- Mobi (silvanortica, 2008-2011; interregional mobility)
- QUALIST (silvanortica +Wallenberger und Linhard, 2010-2013)
- ConnReg AT-CZ (connecting Regions and programs due to improve cross-border activities)

Health Care Projects

- Health Across (cooperation in national health systems)



<http://www.healthacross.eu/en/healthacross/starting-point.html>

Cultural and environmental projects

- NÖ Landesaustellung 2009 gem. mit CZ (Waldviertelakademie, 2009)
- 25 years open borders (W.-Akademie + IDL Regionalentw.; 2014)
- Viadonau, Thaya 2020 (renaturation of the Thaya, environmental protection)
- NÖ Landesregierung, BIG (supporting bilingual abilities)

Analysis of the structural data of CZ-AT border region

Focus: Economy and labour market

Martin Meusburger
Max Strohmeier

Content

- Economic history of the region
- Current economic situation
 - Enterprises and workplaces
 - Average income
 - Foundations of enterprises
- Job market
 - Employment data
 - Commuter data and linkages

Economic history of the region

- General overview
- Theories of causes of peripherisation
- Industrialisation in Waldviertel
 - Textile industry
 - Timber and stone industry
 - Glass and clock industry
- The region after 1918
- „Doubled outskirts“

Enterprises and workplaces

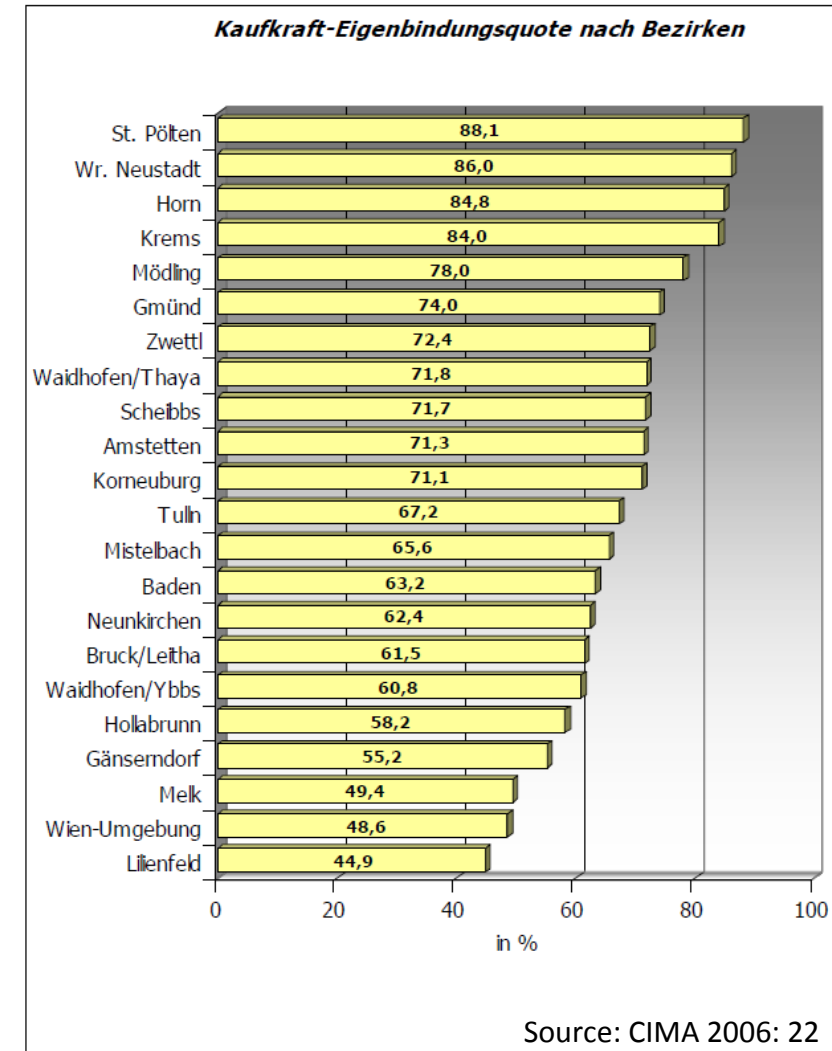
- Austria: 629.898 Enterprises, 20% in Niederösterreich (122.000).
- Percentage of enterprises in the regions:
 - Horn (2,3%)
 - Gmünd (2,2%)
 - Waidhofen a.T. (1,8%).
- Employees:
- Horn: 2,1% of the employees of Niederösterreich
- Gmünd: 2,4%
- Waidhofen a.T.: 1,7%

Average income (2015)

- Österreich: 2078€
- Niederösterreich: 2014€
 - Horn: 1811€ (87% von Ö, 10% unter NÖ-Niveau)
 - Waidhofen a.T.: 1940€ (87%, 3,1% unter NÖ)
 - Gmünd: 2103€ (100,2% v. Ö, 3,7% über NÖ)

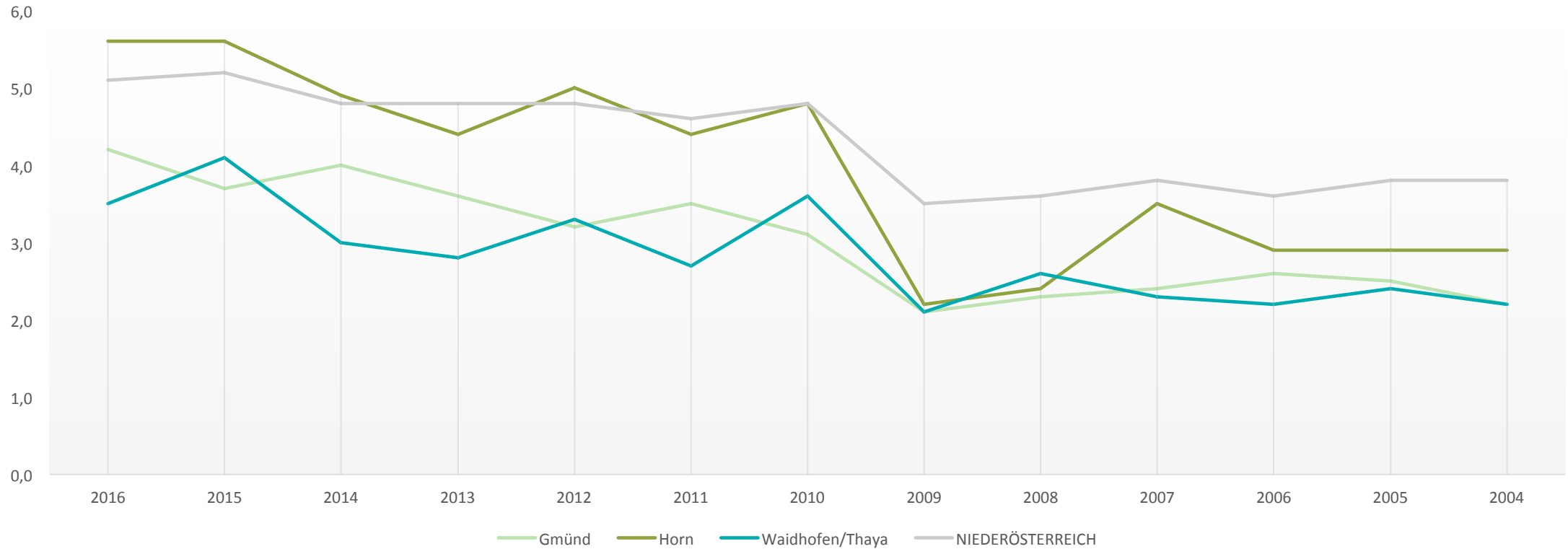
Purchasing power

- Niederösterreich 2006: 7,1 billion €
- Waldviertel 0,964 bn €
- Mostviertel: 0,962; central NÖ: 1,600;
Weinviertel: 1,299; NÖ-south: 2,305.
- Annually effective purchasing power:
- Waidhofen/Thaya: 116 million €
- Gmünd: 167m €
- Horn: 138m €



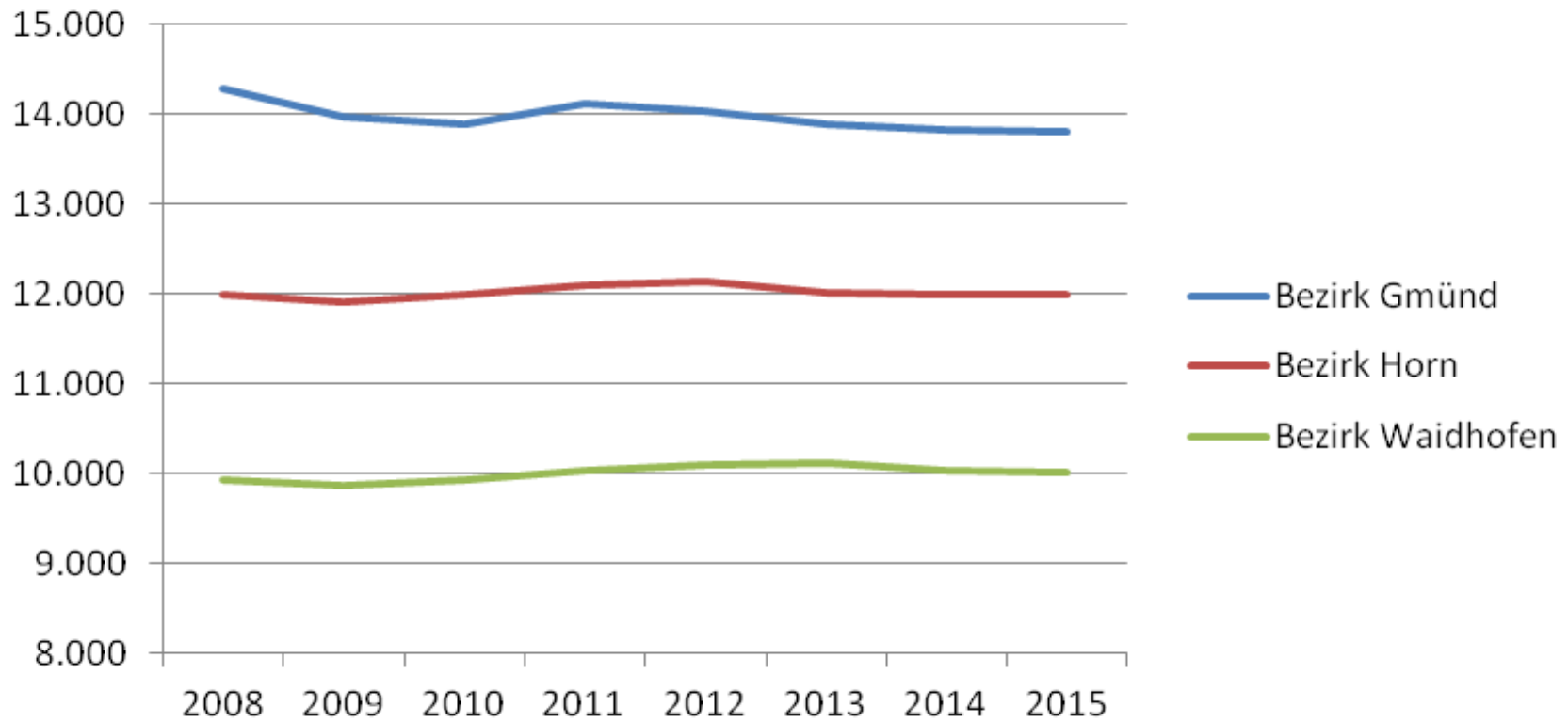
Foundations of enterprises

Unternehmensneugründungen pro 1.000 Einwohner

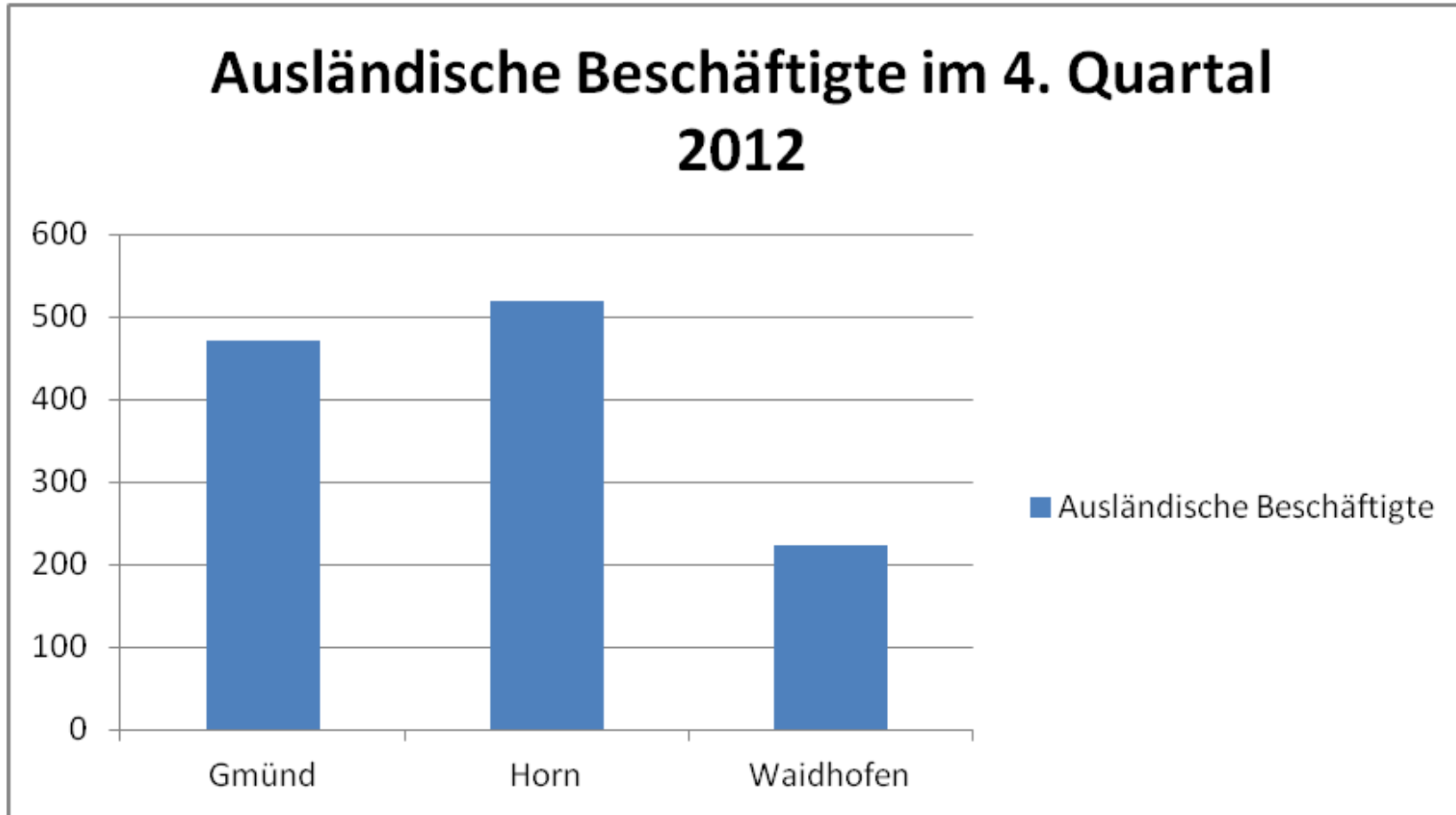


Source: WKO

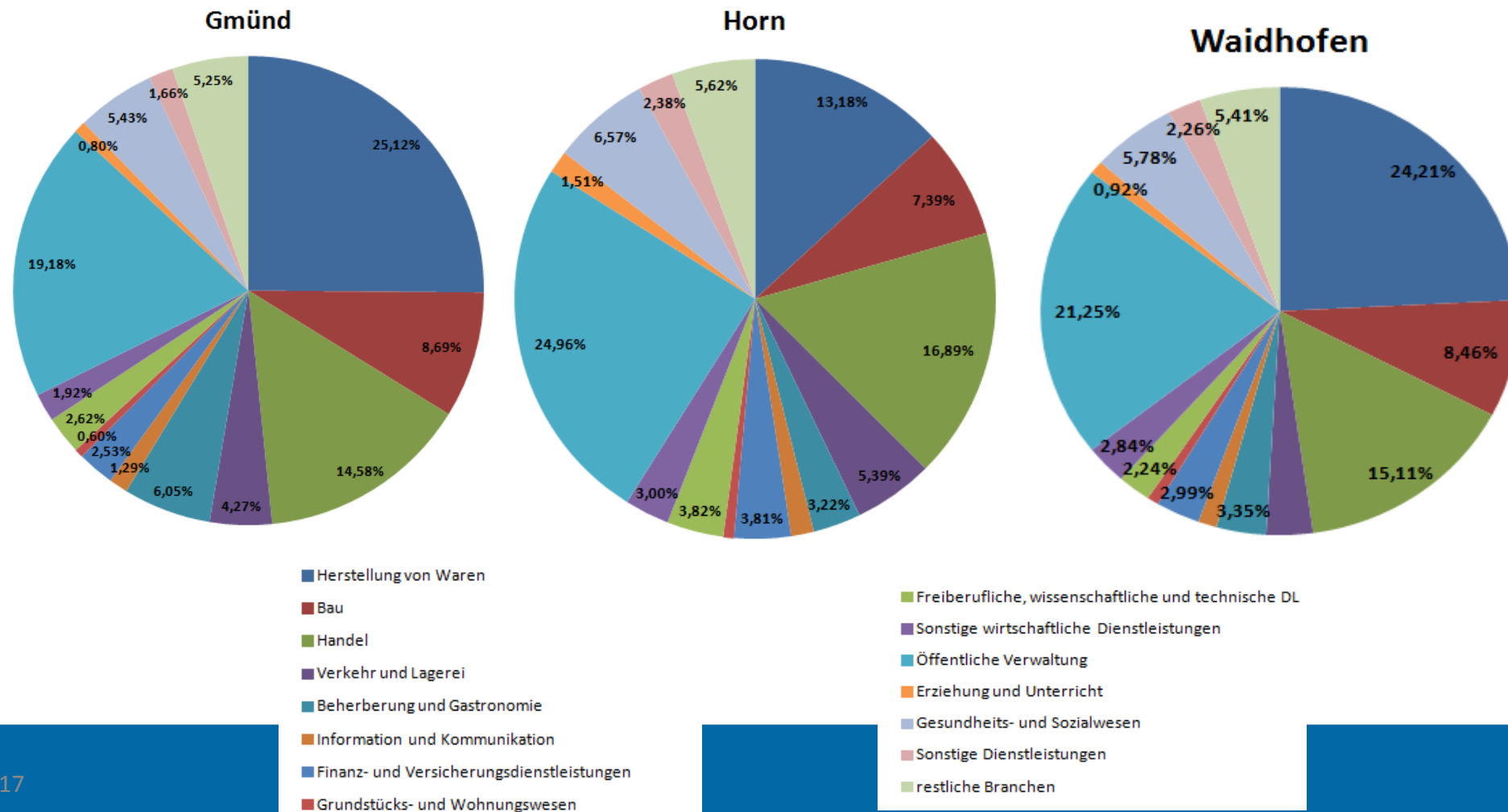
Development of the non-independent employees 2008-2015

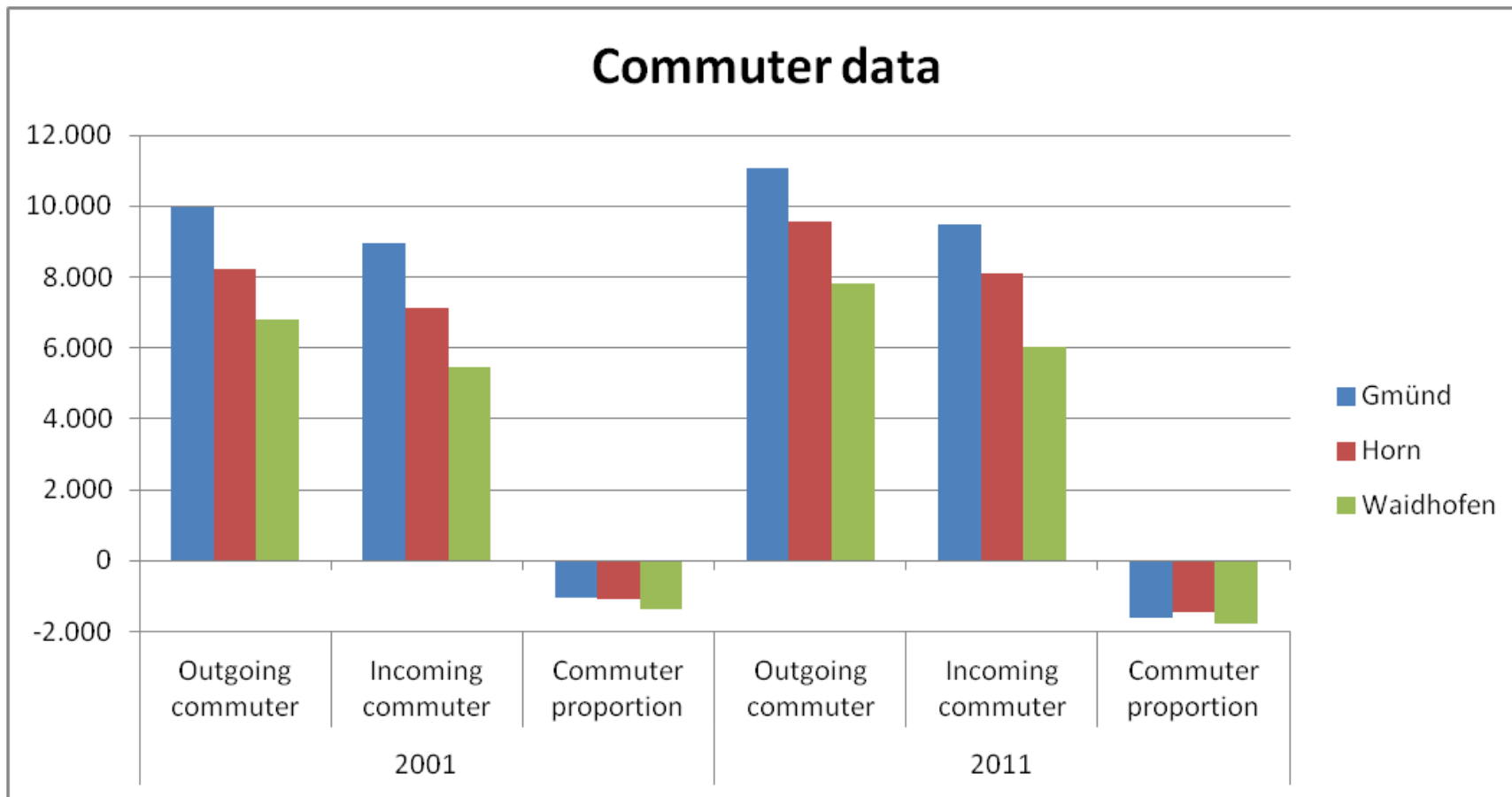


Ratio national/foreign employees



Employees differed by economic branches (2014)



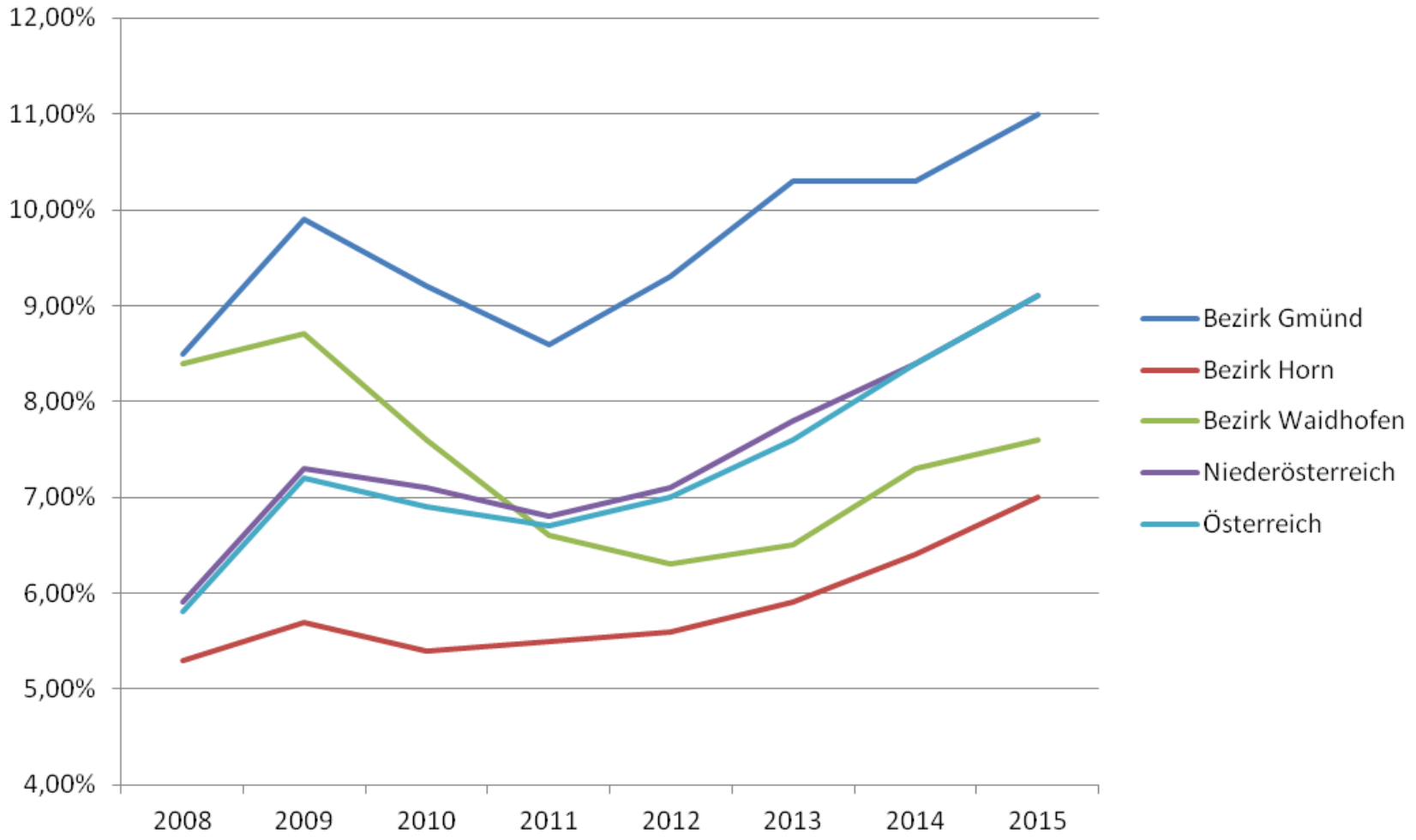


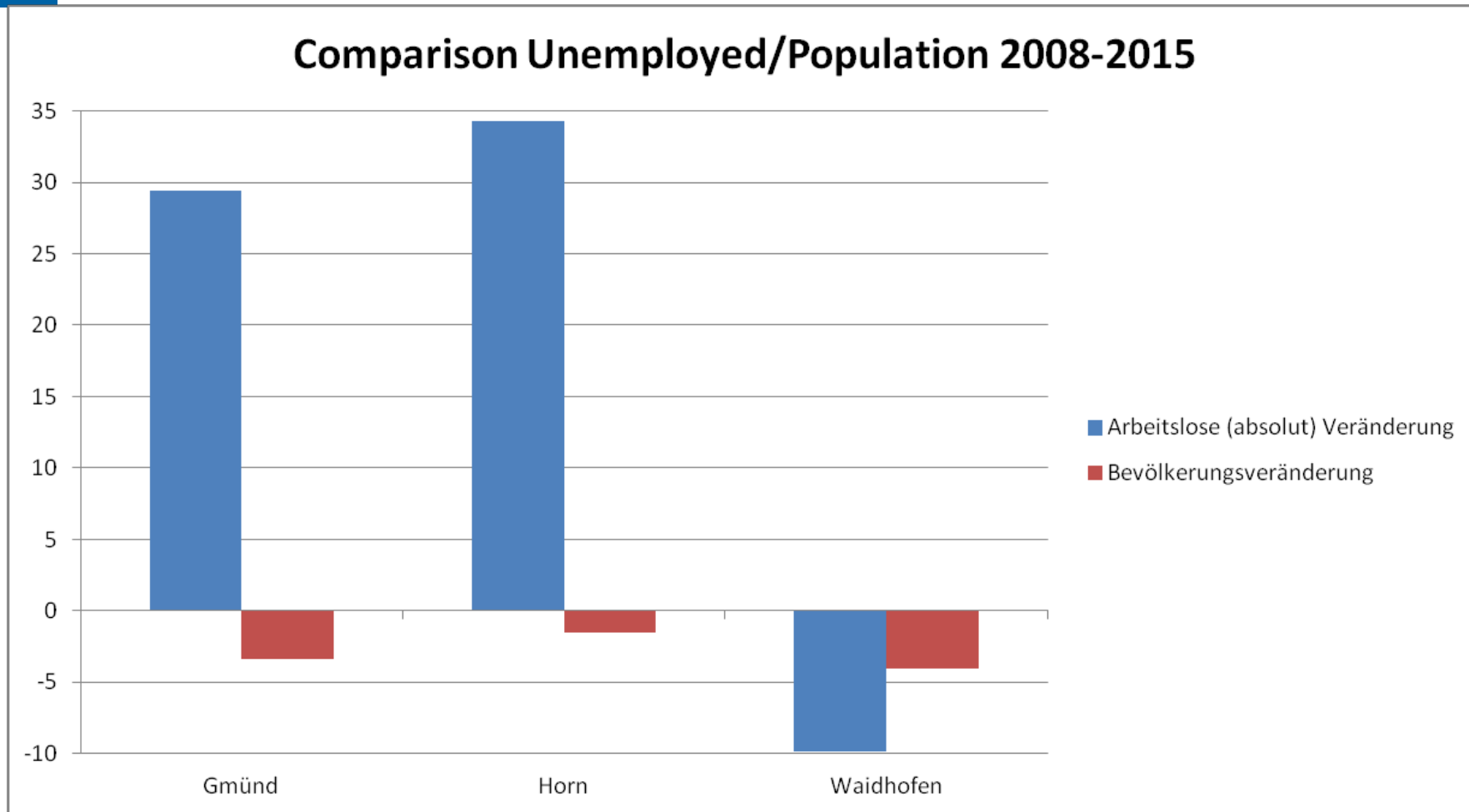
Commuting linkages Waldviertel

- Strong linkages with neighbouring districts, e.g.
 - Horn with Hollabrunn
 - 70% of the incoming commuters in Gmünd are from Waidhofen and Zwettl
- 22,2% of the outgoing commuters are going to Vienna
 - Horn has above average outgoing commuters to Vienna (37,4%)
 - Gmünd 18,02%; 19,59% Waidhofen
- 7,6% of all outgoing commuters go to St. Pölten
 - 7% from Waidhofen
 - 8% from Horn and Gmünd
- 763 employees from abroad commute to the Waldviertel
 - Highest share: 9,8% Gmünd
 - Horn 6,12%; Waidhofen 5,94%



Development of the unemployment rate between 2008-2015





Sources

- AMS Arbeitsmarktdatenprofile
- CIMA Austria (2006): Kaufkraftstrom- und Einzelhandelsstrukturuntersuchung Niederösterreich
- Land NÖ
- <http://www.job-czat.eu/de/analyzy/statistik/arbeitsmarktdaten-gesamtuebersicht/>
- https://media.arbeiterkammer.at/noe/pdfs/Pendleranalyse_2014.pdf
- <http://wko.at/wknoe/stat/>
- Statistik Austria

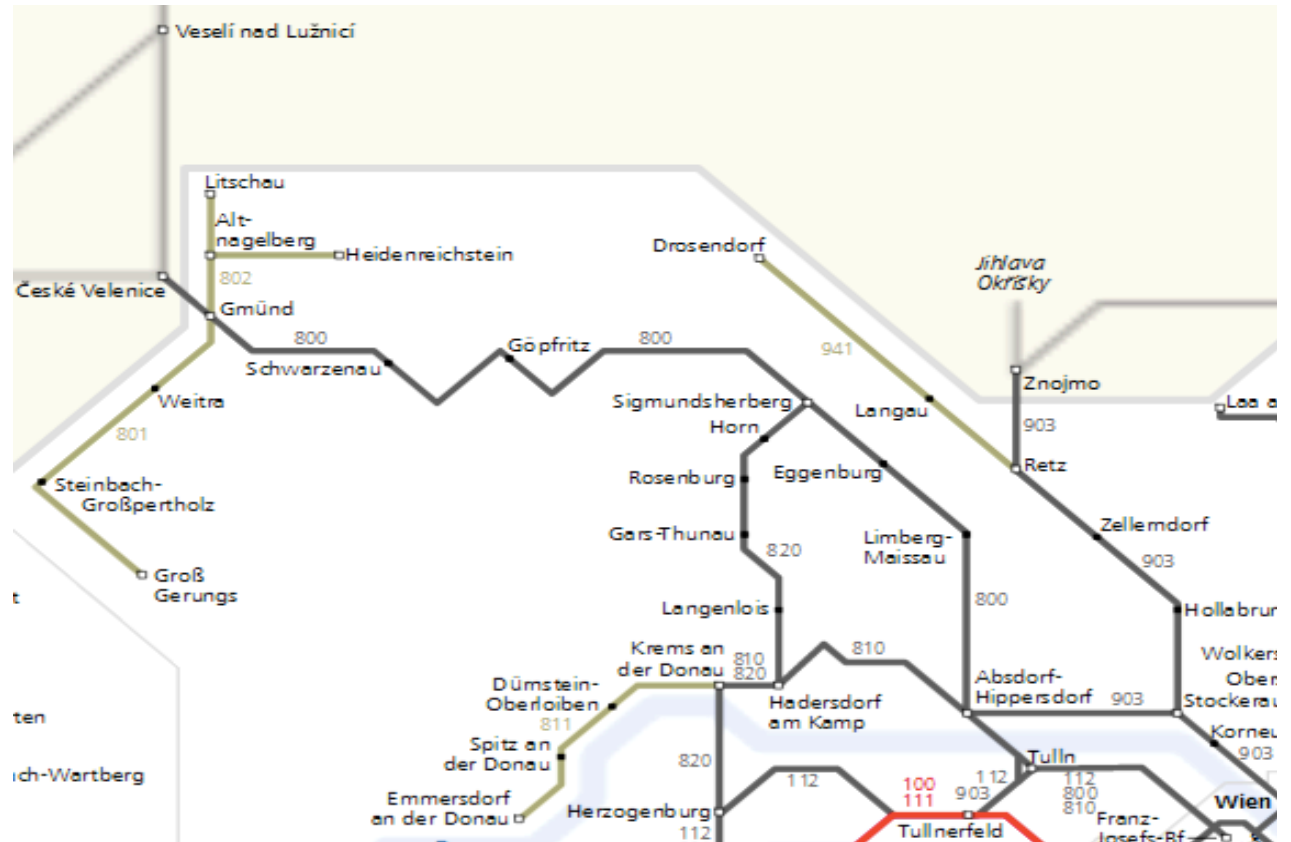
Tourism and Infrastructure

Alexandra Prinz, Elina Zoppoth

Infrastructure

Infrastructure

- 3 Railway Lines (Franz- Josefs Bahn, Waldviertelbahn, Reblausexpress)
- 23 Buslines
- N8BUZZ
- 9 Park & Ride Locations
- No Motorways



http://www.oebb.at/file_source/reiseportal/streckenfahrplaninfos/Fahrplanbilder/Bahnnetz.pdf

Border crossing

- 12 Border crossings for cars and/or pedestrians
- 1 for trains (Gmünd- České Velenice)

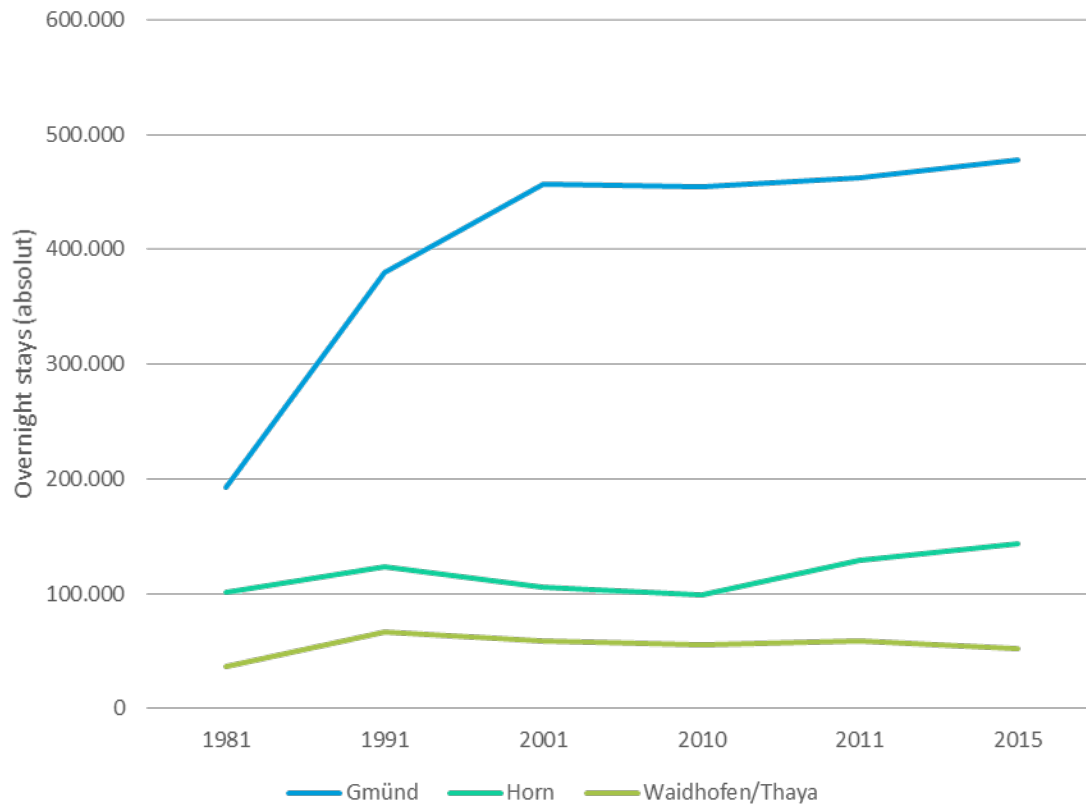
Social Infrastructure

- 3 Hospitals (LK Gmünd, LK Waidhofen, LK Horn- Allentsteig)
- Secondary Schools: - Gmünd: 5
 - Horn: 4
 - Waidhofen/ Thaya: 3
- Vocational Schools: - Gmünd: 1
 - Horn: 2
 - Waidhofen/ Thaya: 1

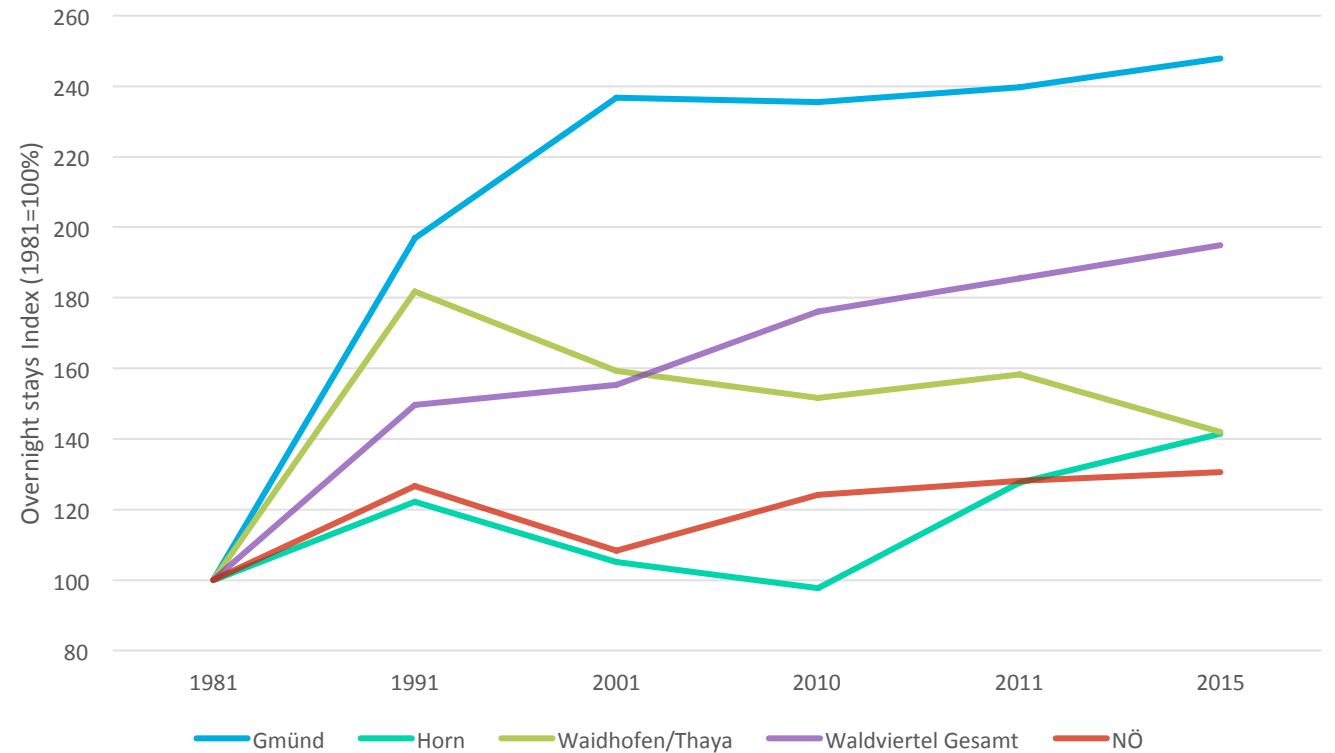
Tourism

Development of overnight stays

Development of overnight stays 1981-2015



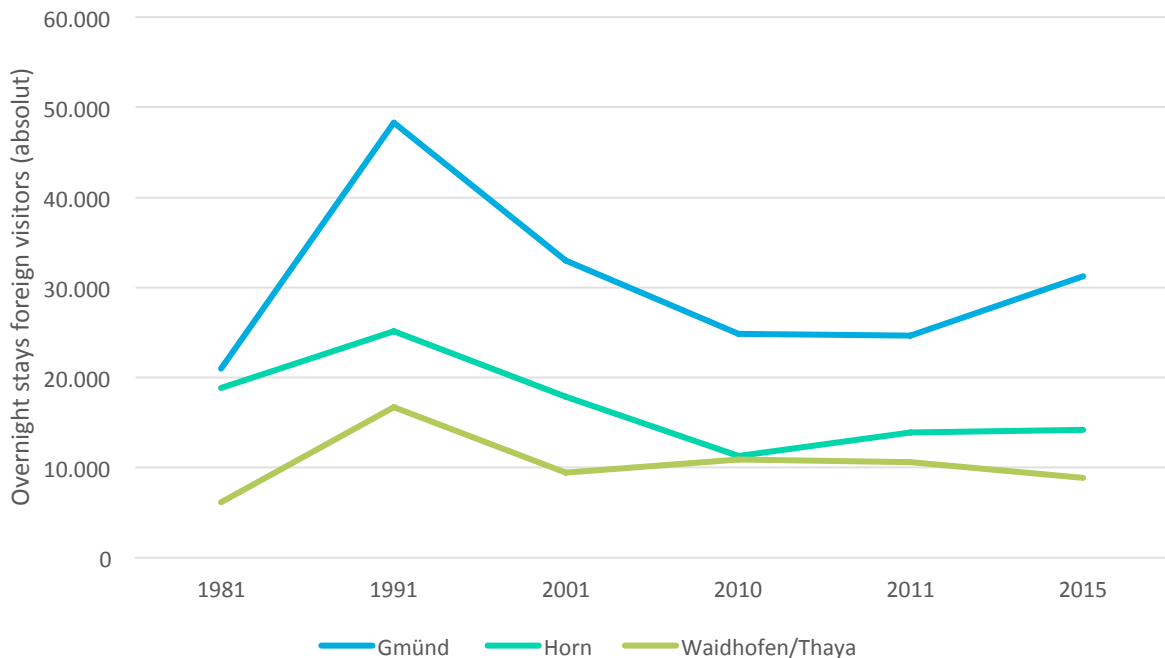
Development of overnight stays 1981-2015 (Index)



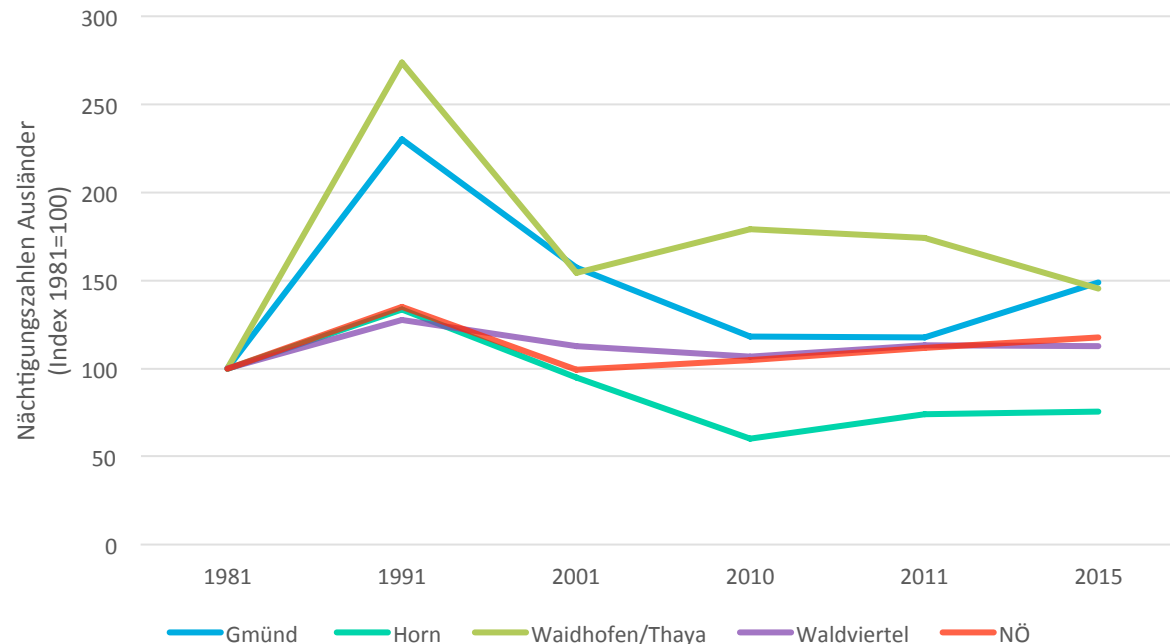
Data basis: Statistik Austria 2011, Land NÖ

Development of overnight stays of foreign visitors

Development of overnight stays of foreign visitors
1981-2015



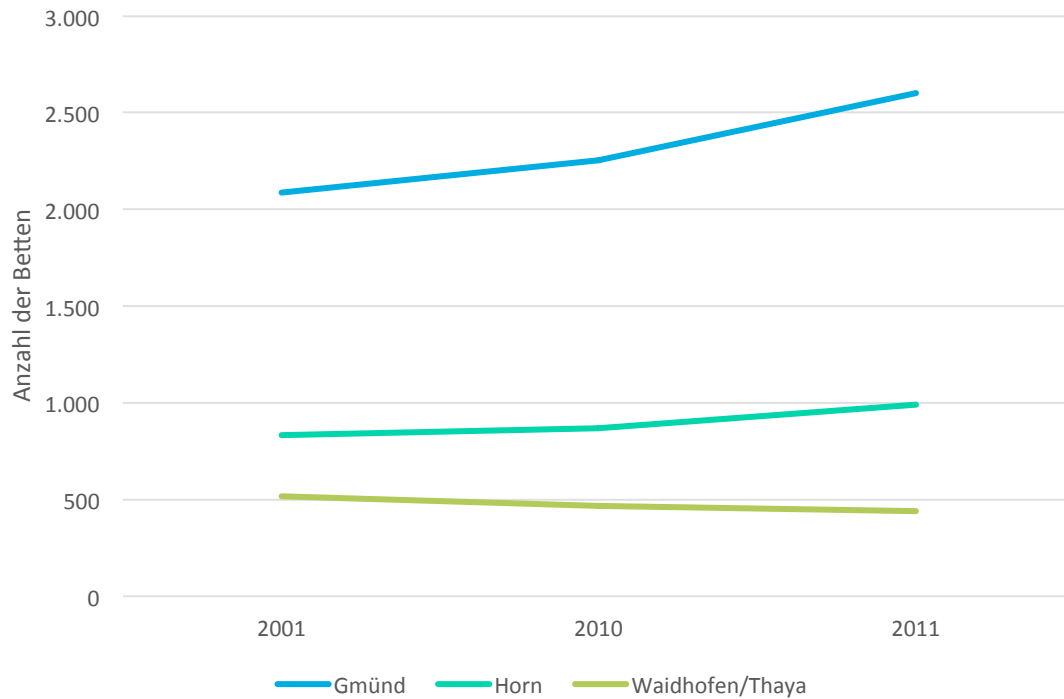
Development of overnight stays of foreign visitors
1981-2015 Index



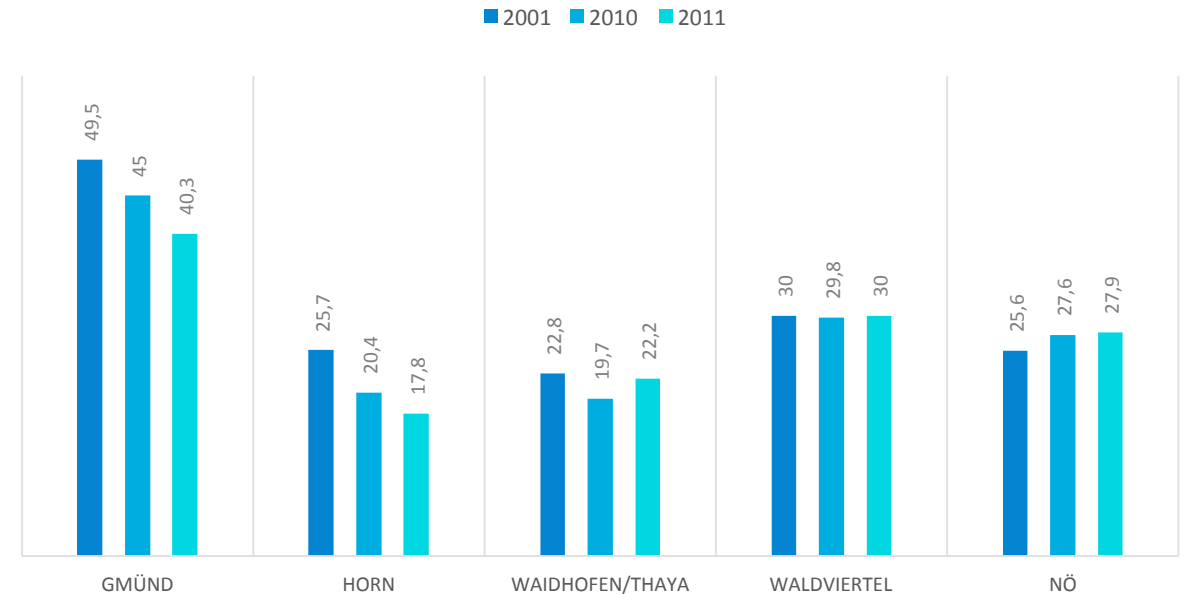
Data basis: Statistik Austria 2011, Land NÖ

Development of amount of beds and occupancy rate

Development amount of beds 2001- 2011

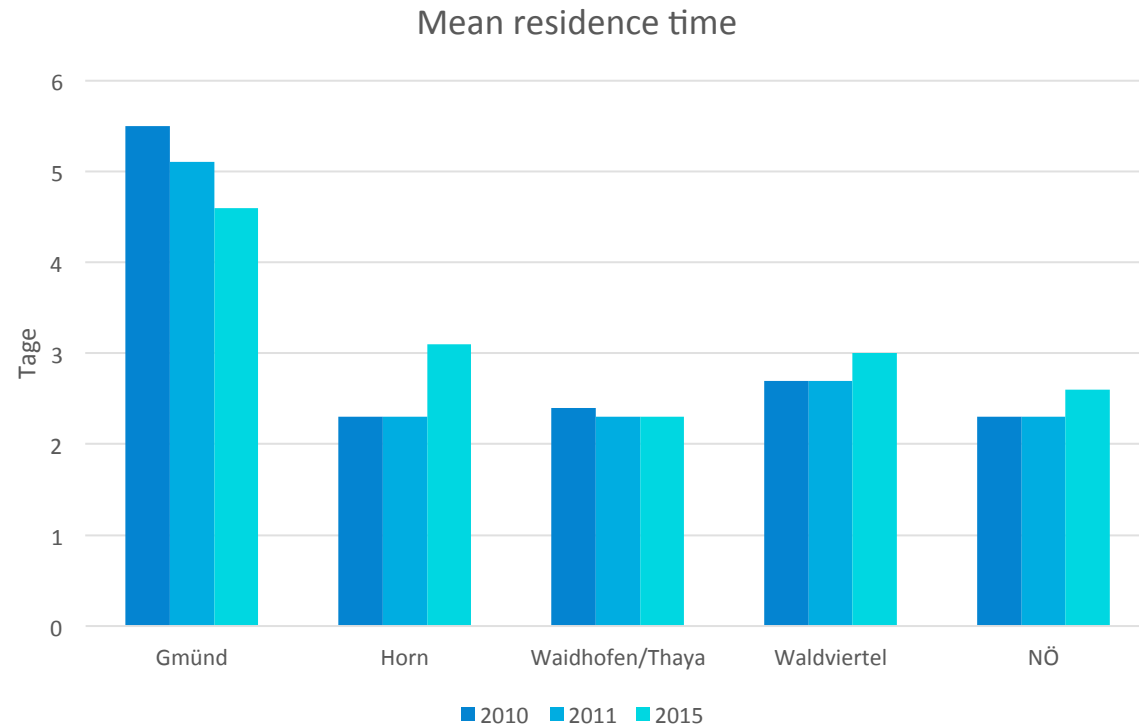


bed occupancy rate in %



Data basis: Statistik Austria 2011, Land NÖ

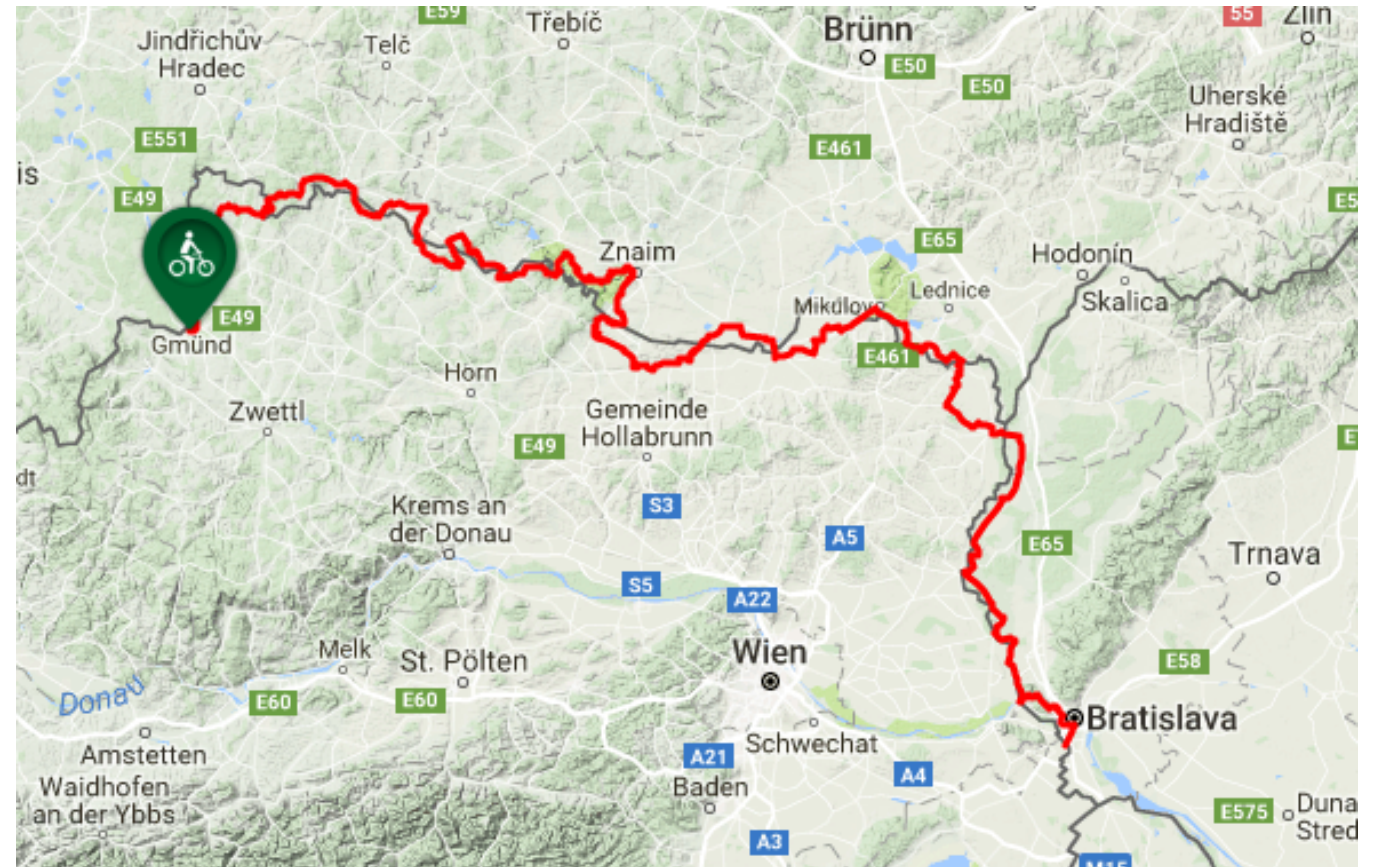
Mean residence time



Data basis: Statistik Austria 2011, Land NÖ

Iron Curtain Trail

- 406,3 km
- 10 stages
- Further trails:
 - Kamp-Thaya-March Radroute
 - Thayarunde



Source: Weinviertel Tourismus GmbH

Natural Parks



Naturpark Geras
www.naturparkgeras.at



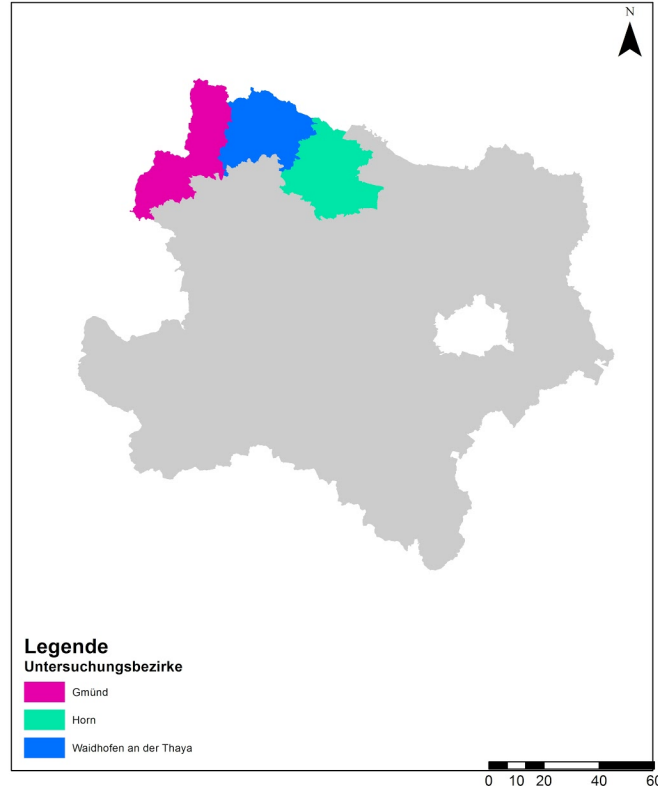
Naturpark Nordwald

Strukturdatenanalyse der Bezirke Gmünd, Waidhofen a.d. Thaya & Horn

Eine Einschätzung der soziodemographischen Situation

Hrach Michael & Pühringer Marie-Sophie

Basics



Population

Gmünd 37.557 (2016)

Horn 31.452 (2016)

Waidhofen a.d. Thaya 26.407 (2016)

(5,77% der niederösterreichischen Bevölkerung)

Area of total 2.239,8 km²

(11,67% der Fläche Niederösterreichs)

Central Research Issues

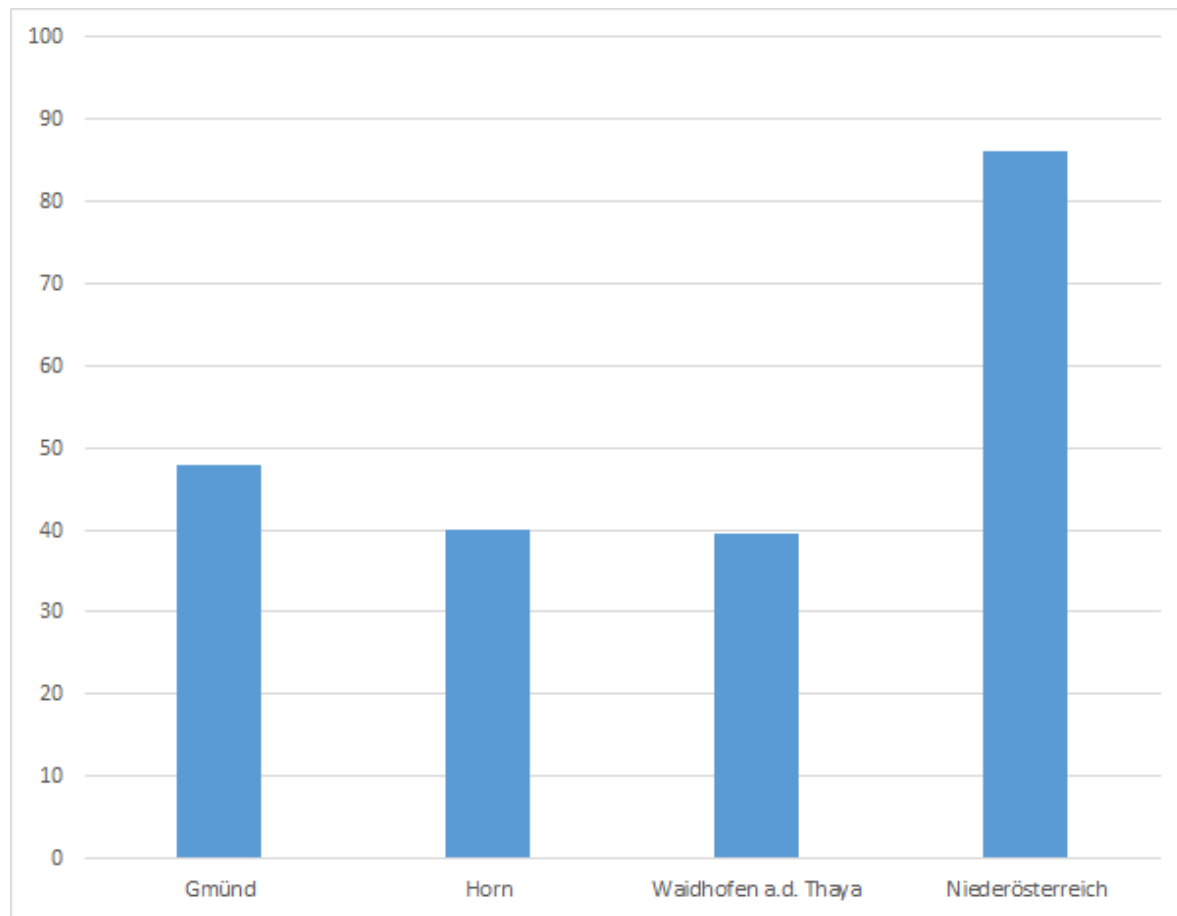
- Population Development
 - Birthrate
 - Migration
- Population Composition
 - Age
 - Sex
 - Immigrant Background
 - Education

Are there any structural differences between the three districts?

Are there any spatial differences within the districts?

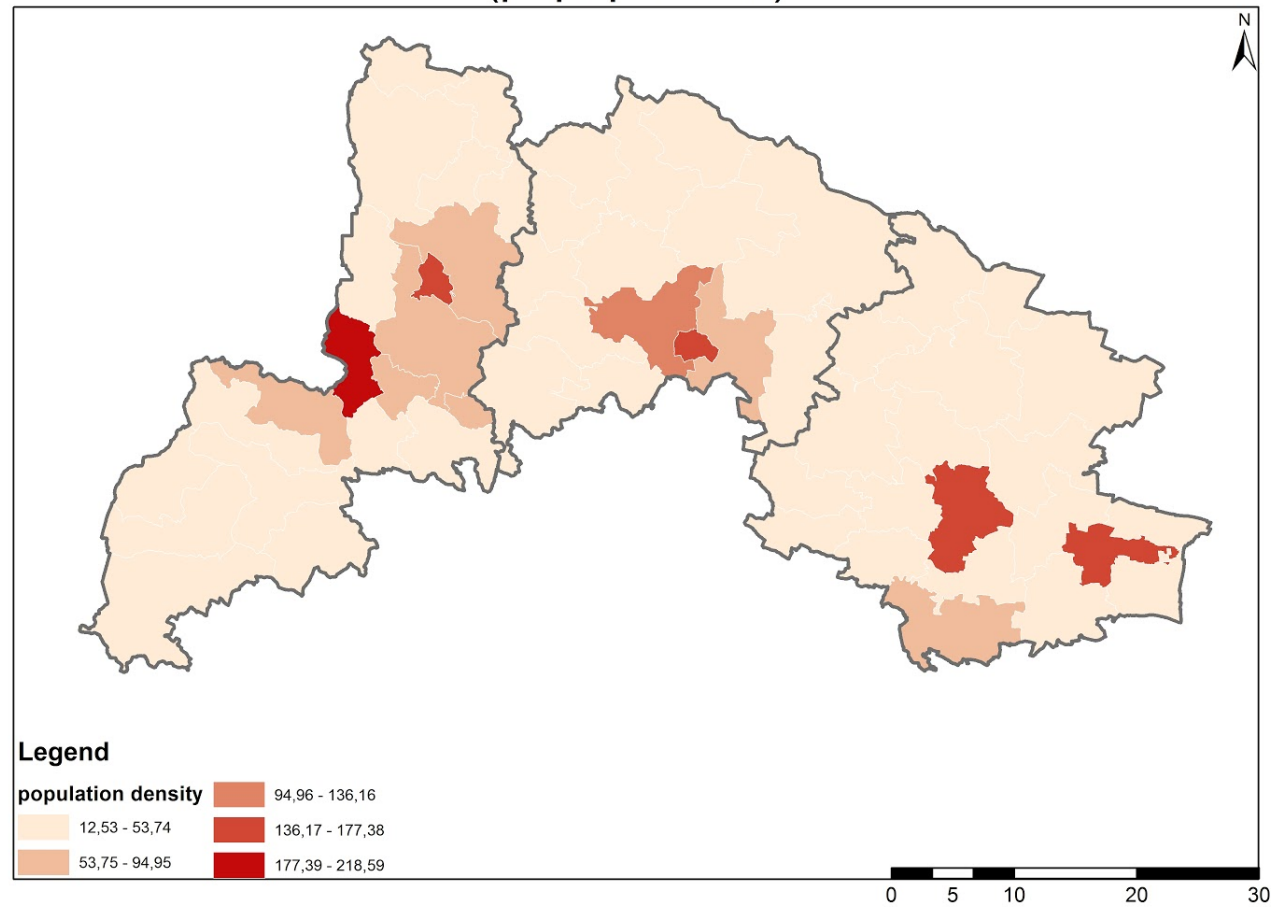
Is a spatial relationship between the border and the sociodemographic structure observable?

Population Density



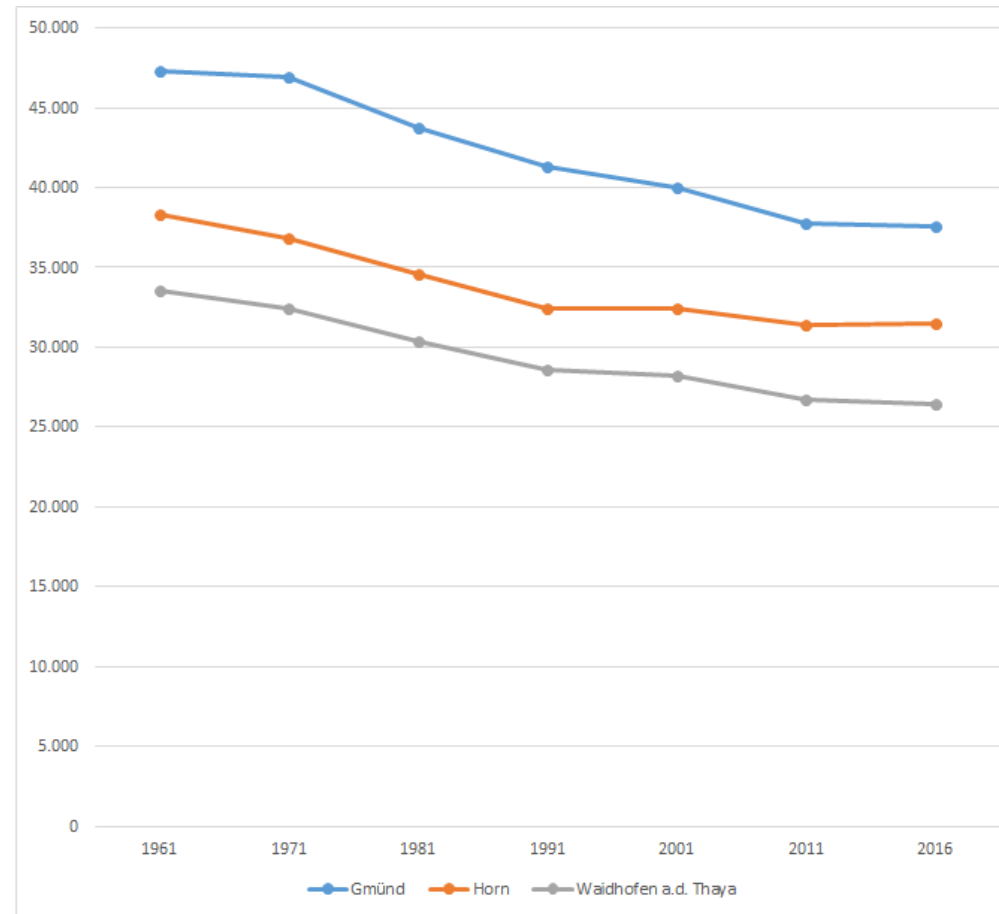
(own diagram, source: Statistik Austria 2017)

Population Density in the Municipalities in 2016 (pop. per km²)



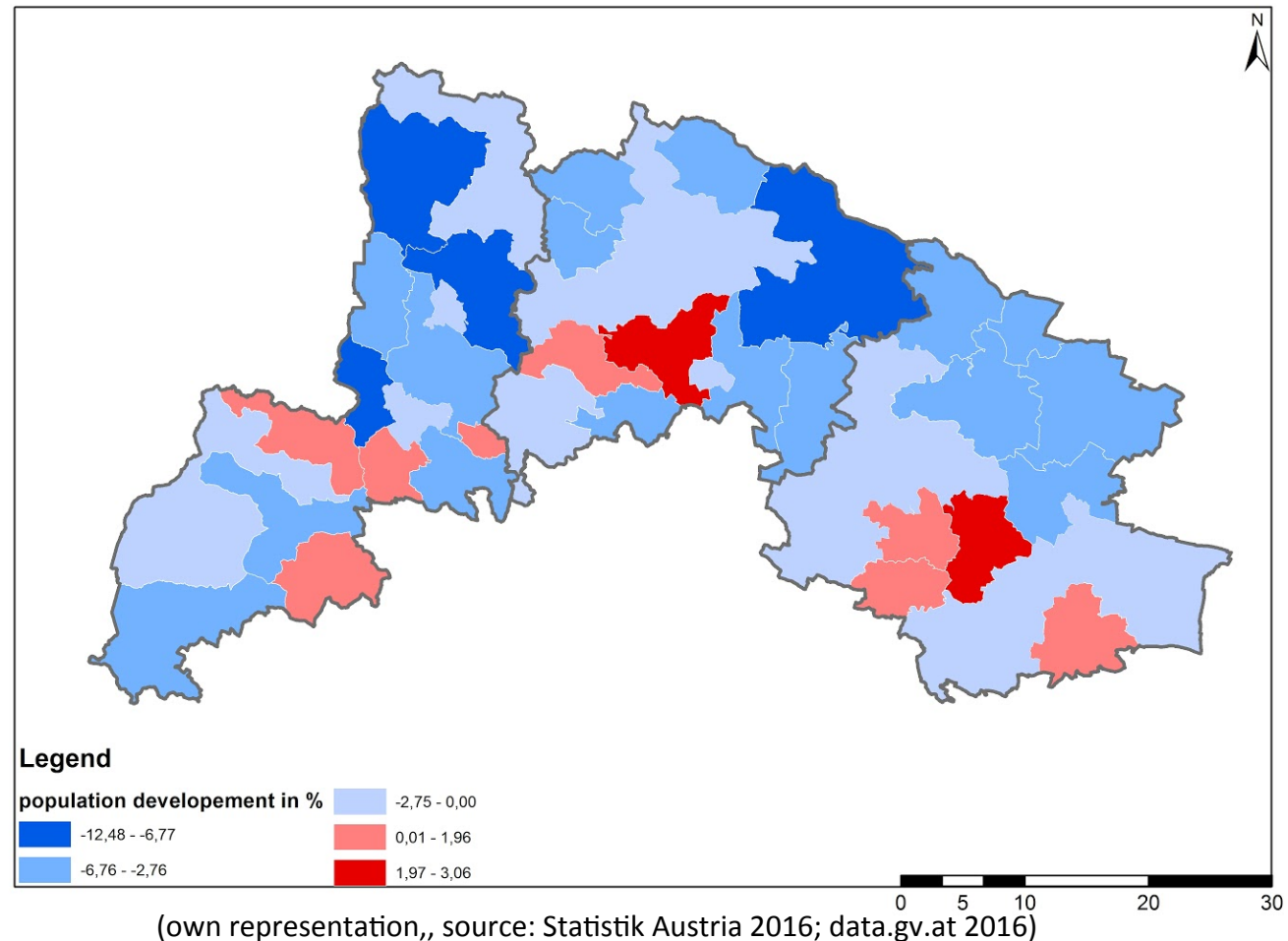
(own representation, source: Statistik Austria 2016; data.gv.at 2016)

Population Development (1961 - 2016)



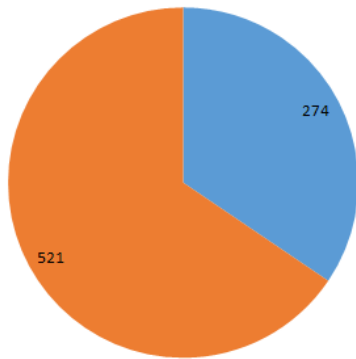
(own diagram, source: Statistik Austria 2017)

Population Development in Percent (1981-2016)

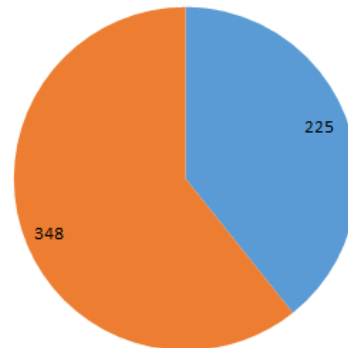


Proportion Births & Deaths (2015)

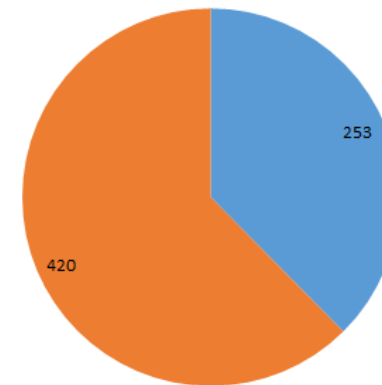
The Proportion in the District Gmünd



The Proportion in the District Waidhofen a.d. Thaya



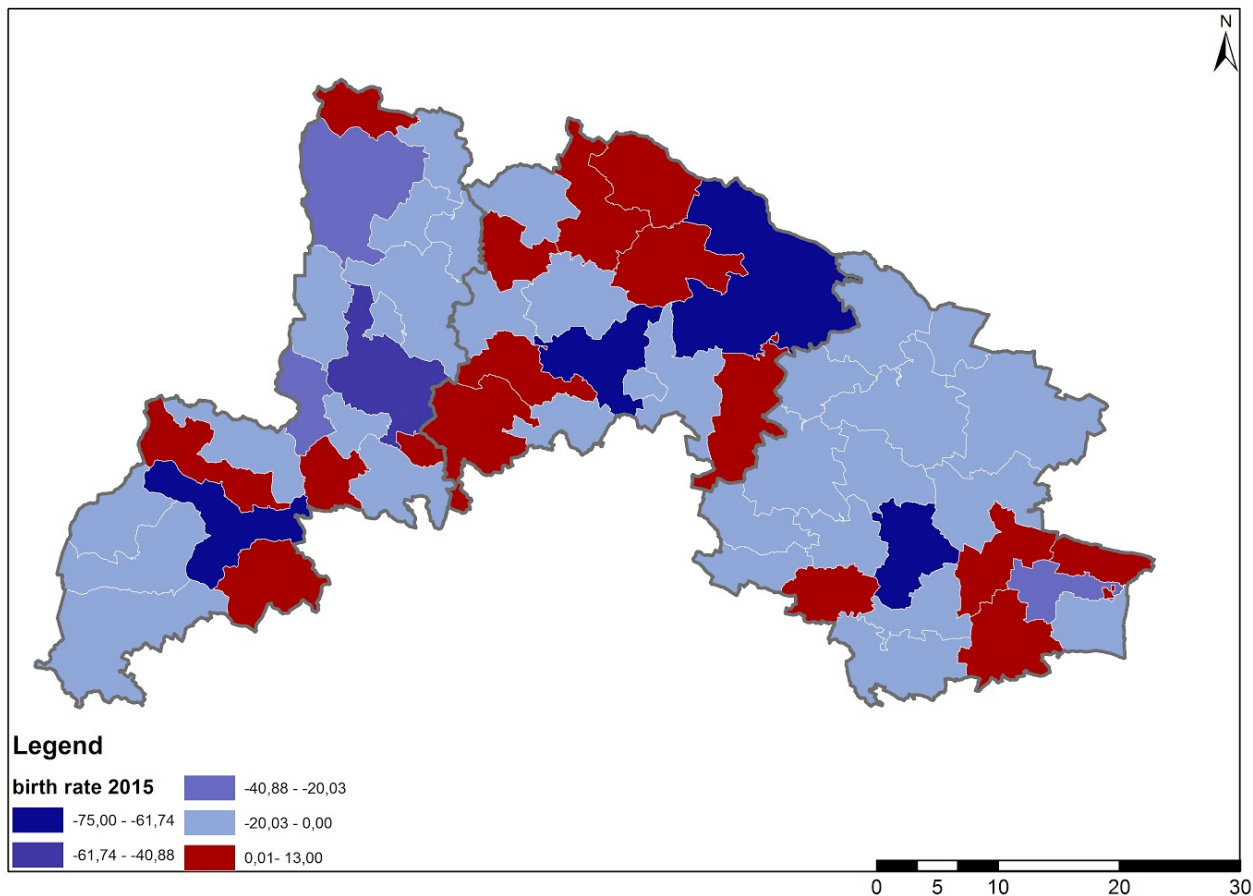
The Proportion in the District Bezirk Horn



■ Lebendgeborene
■ Gestorbene

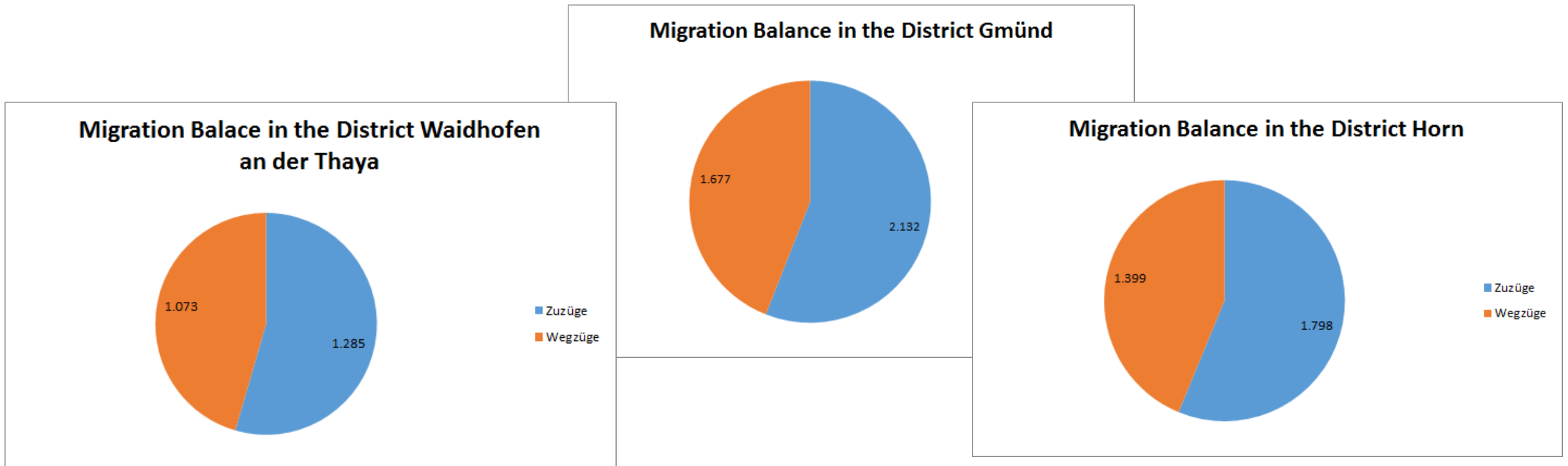
(own diagrams, source: Statistik Austria 2016)

The birth rate of the communities (2015)

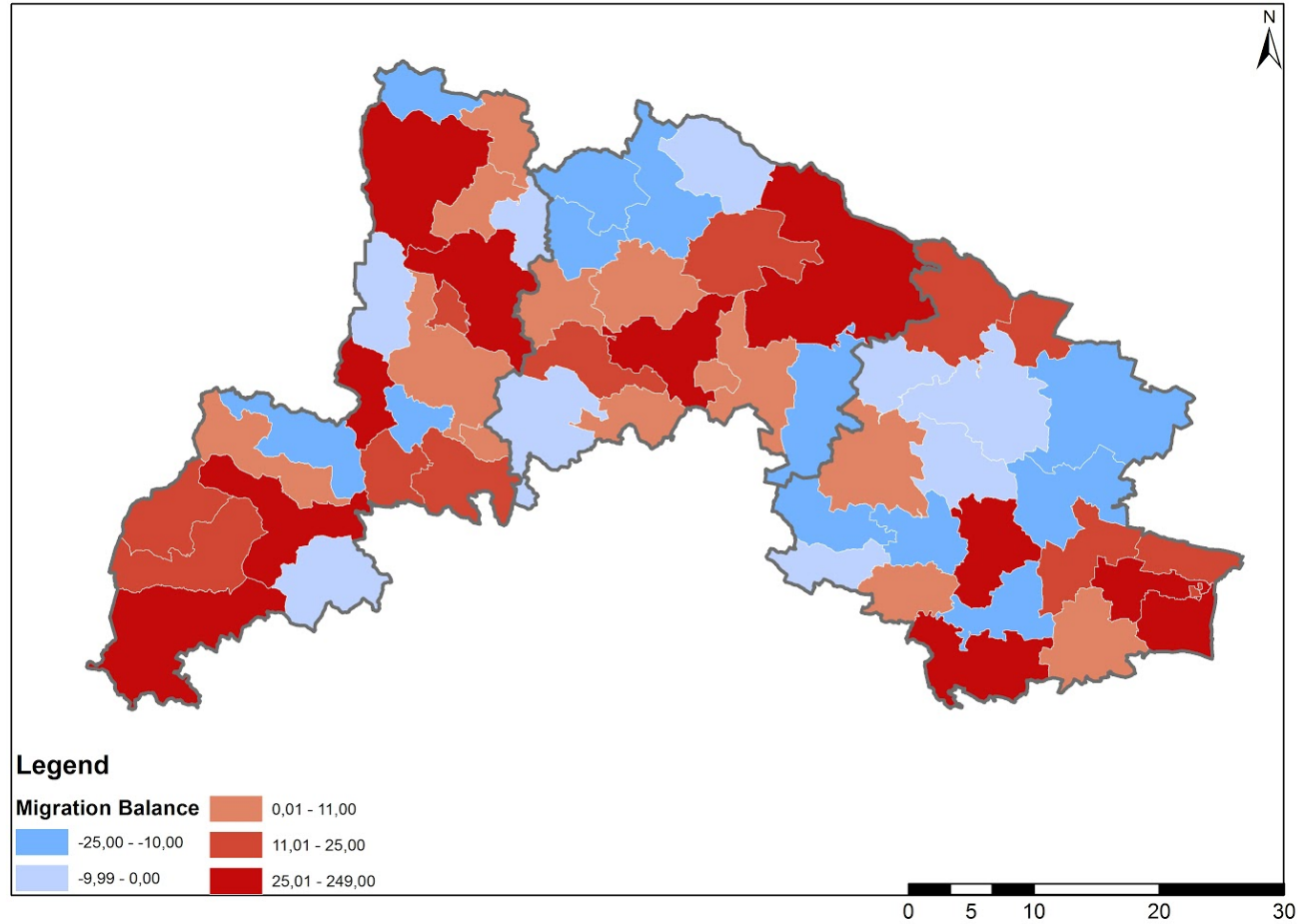


(own representation,, source: Statistik Austria 2016; data.gv.at 2016)

Migration Balance in the Districts (2014-2015)

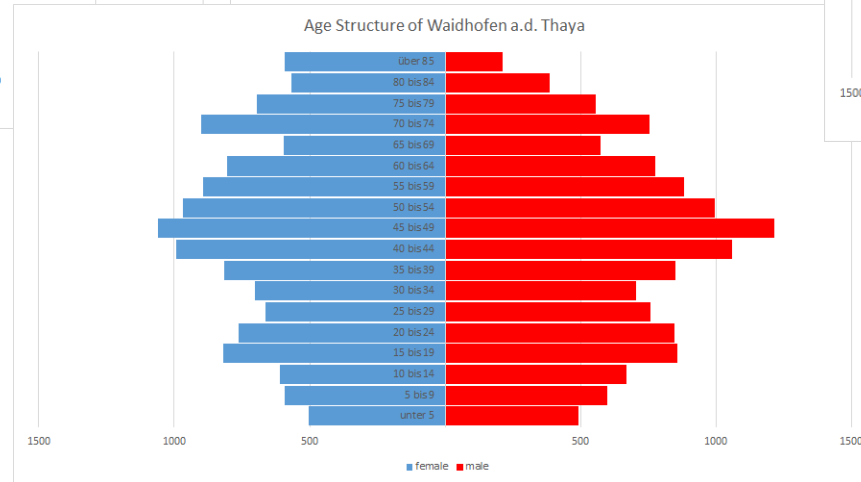
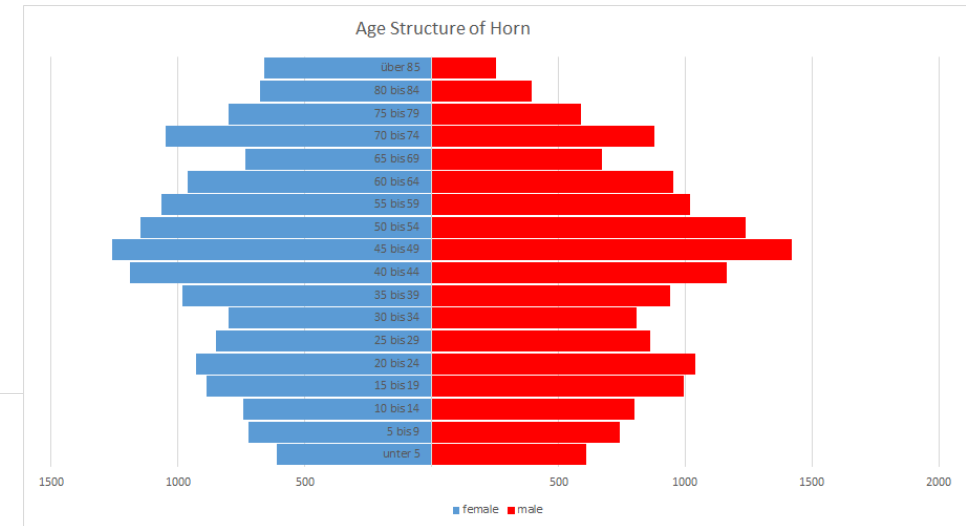
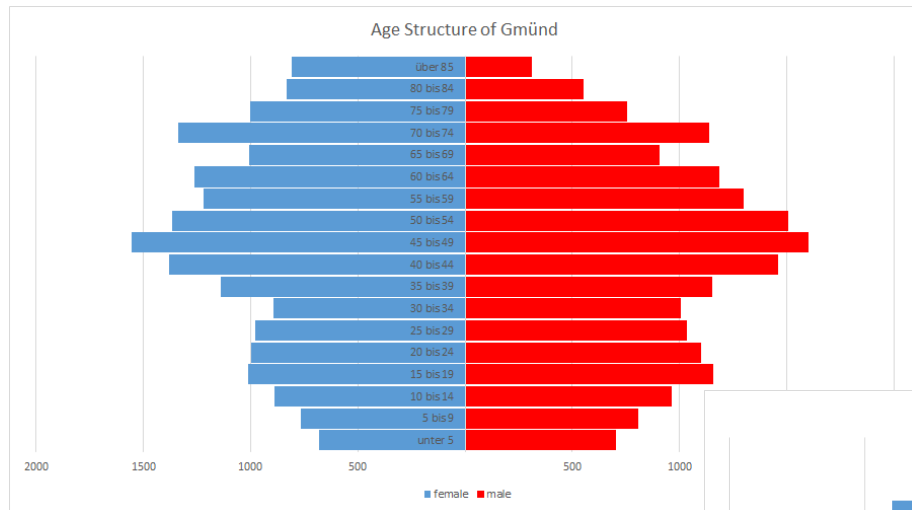


Migration Balance of the communities (2014 - 2015)



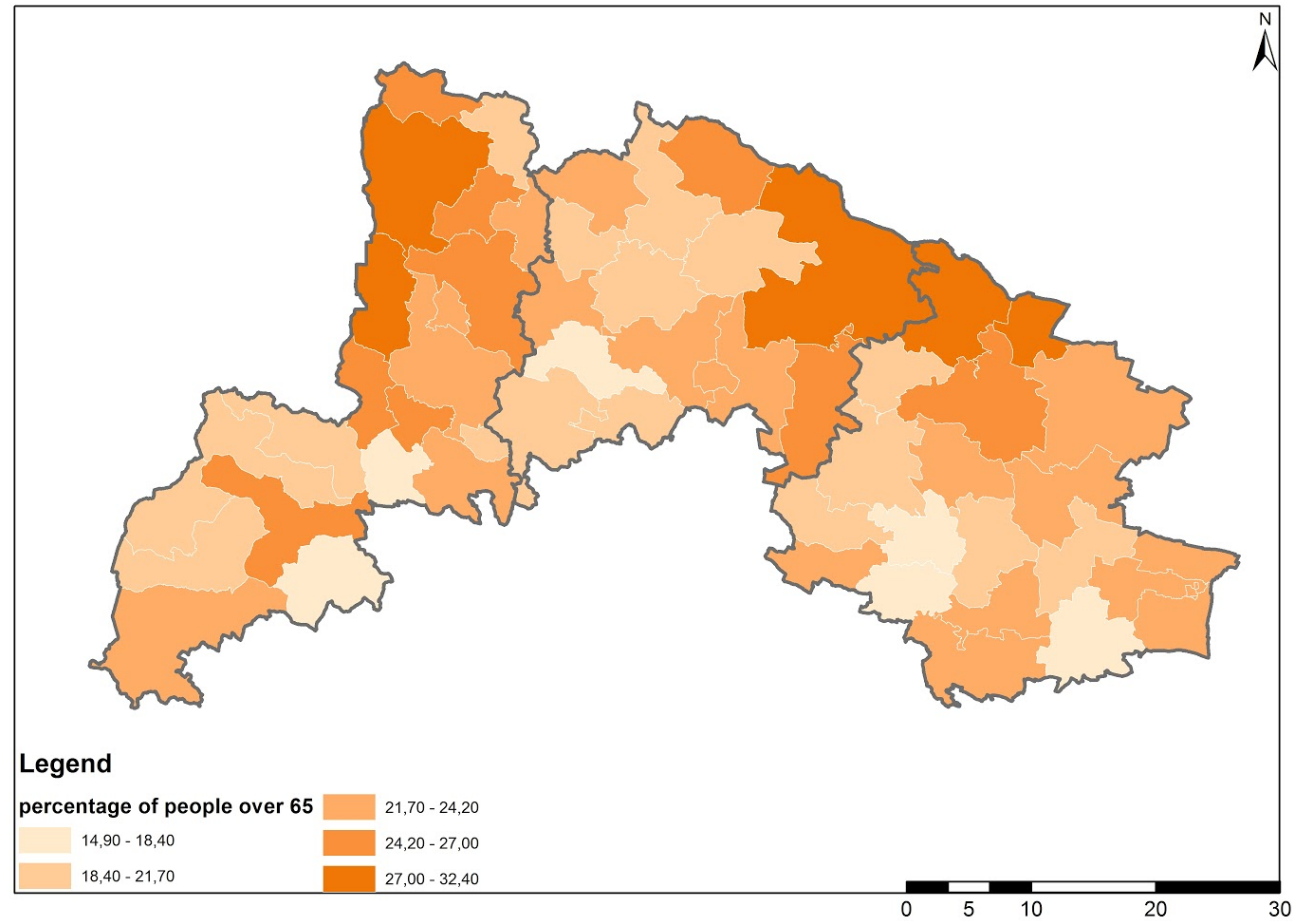
(own representation, source: Amt der Niederösterreichischen Landesregierung 2015; data.gv.at 2016)

Age Structure in the Districts (2011)



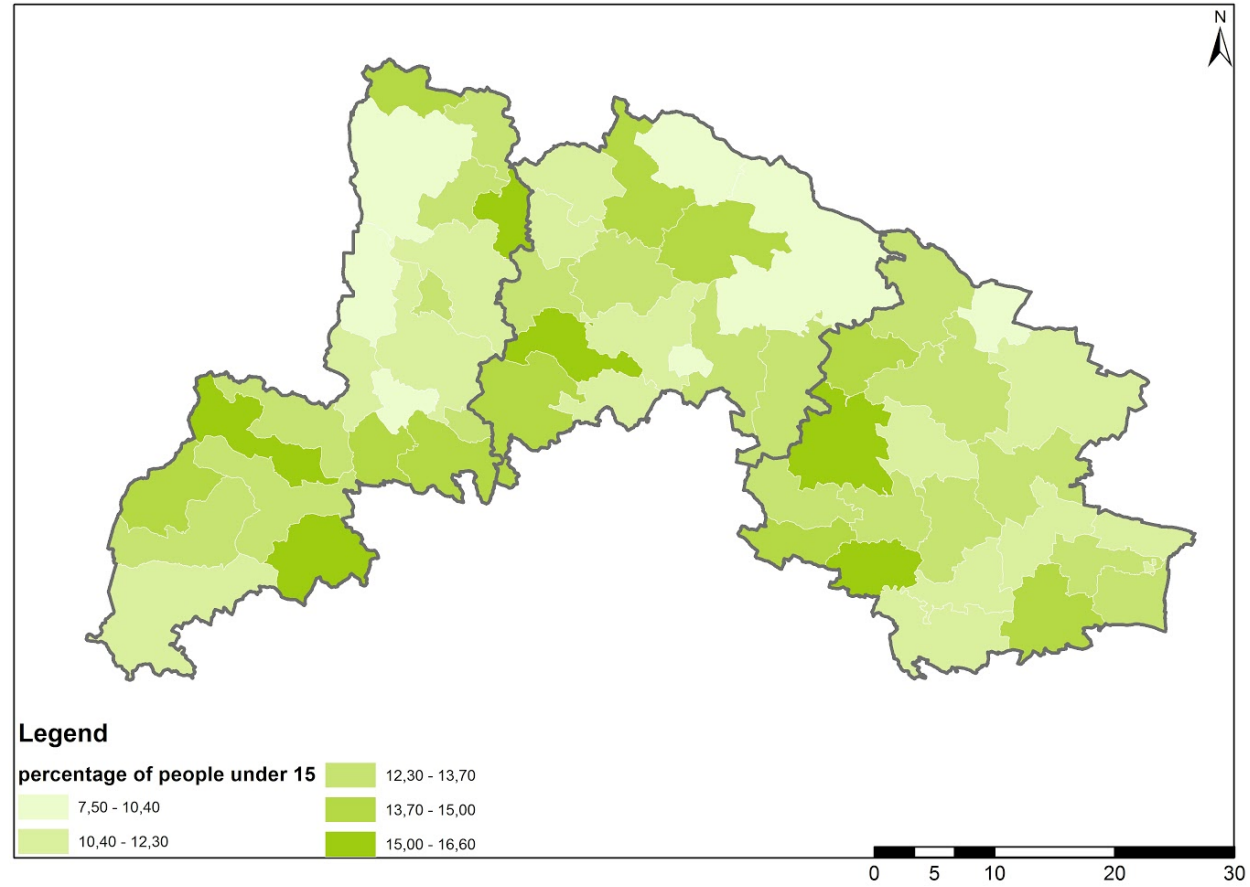
(own diagrams,, source: Wirtschaftskammer Österreich 2011)

Ratio of People over 65 (2014)



(own representation, source:Statistik Austria 2014; data.gv.at 2016)

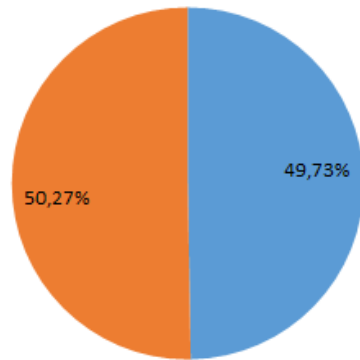
Ratio of People under 15 (2014)



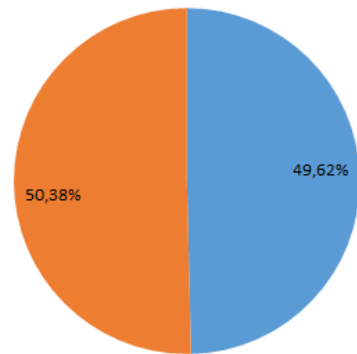
(own representation, source: Statistik Austria 2014; data.gv.at 2016)

Men & Women in the Districts (2014)

The Gender Ratio in the District Gmünd

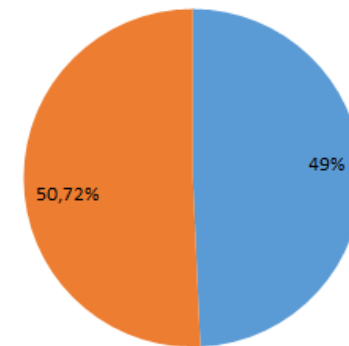


The Gender Ratio in the District
Waidhofen an der Thaya



■ male
■ female

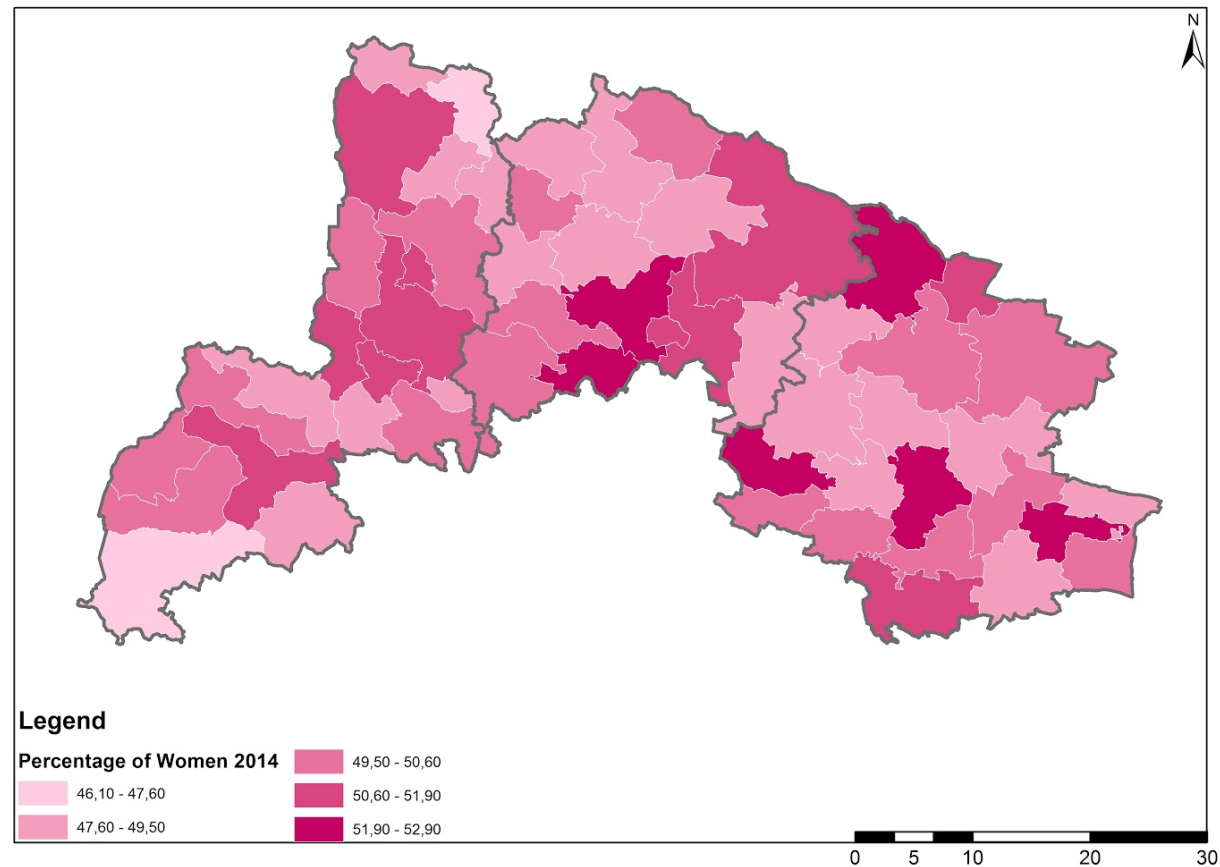
The Gender Ratio in the District Horn



■ male
■ female

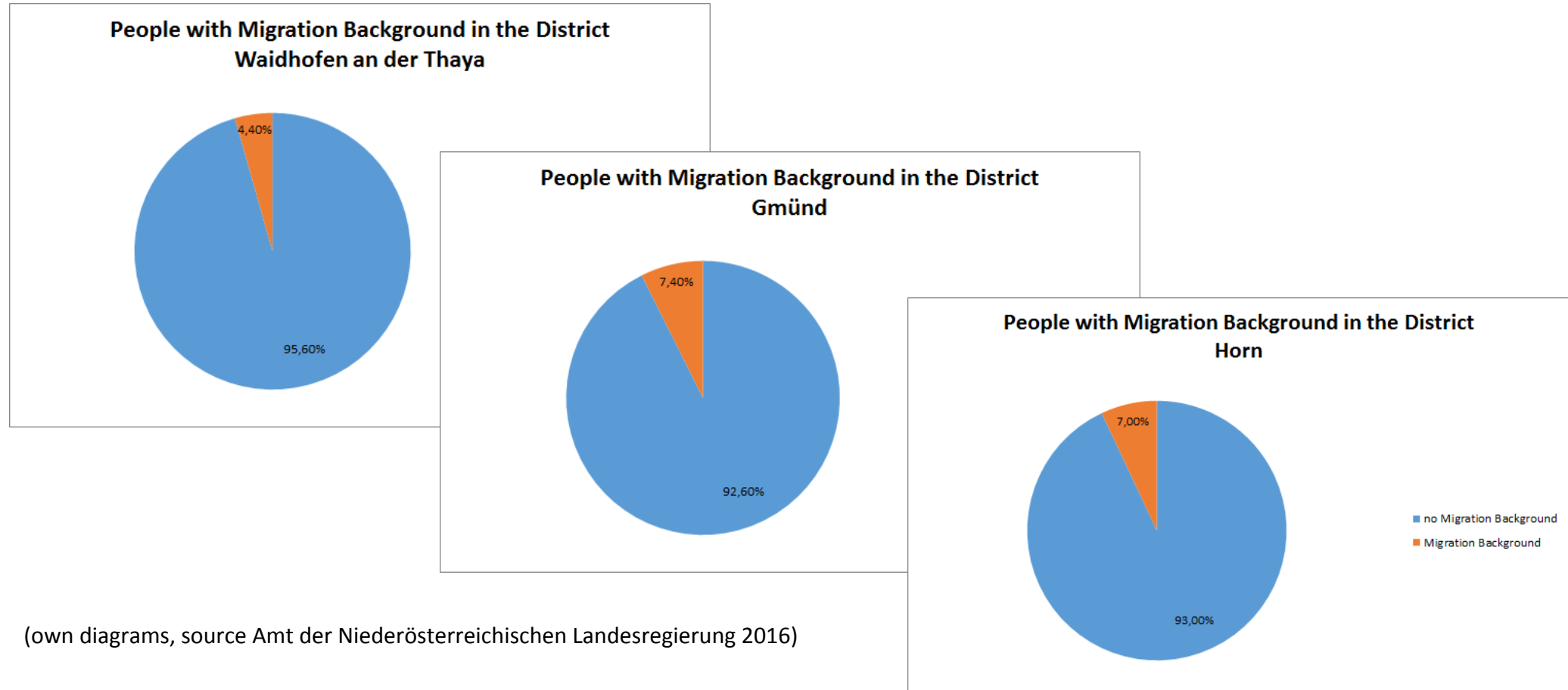
(own diagrams, source: Statistik Austria 2016)

Percentage of Women (2014)

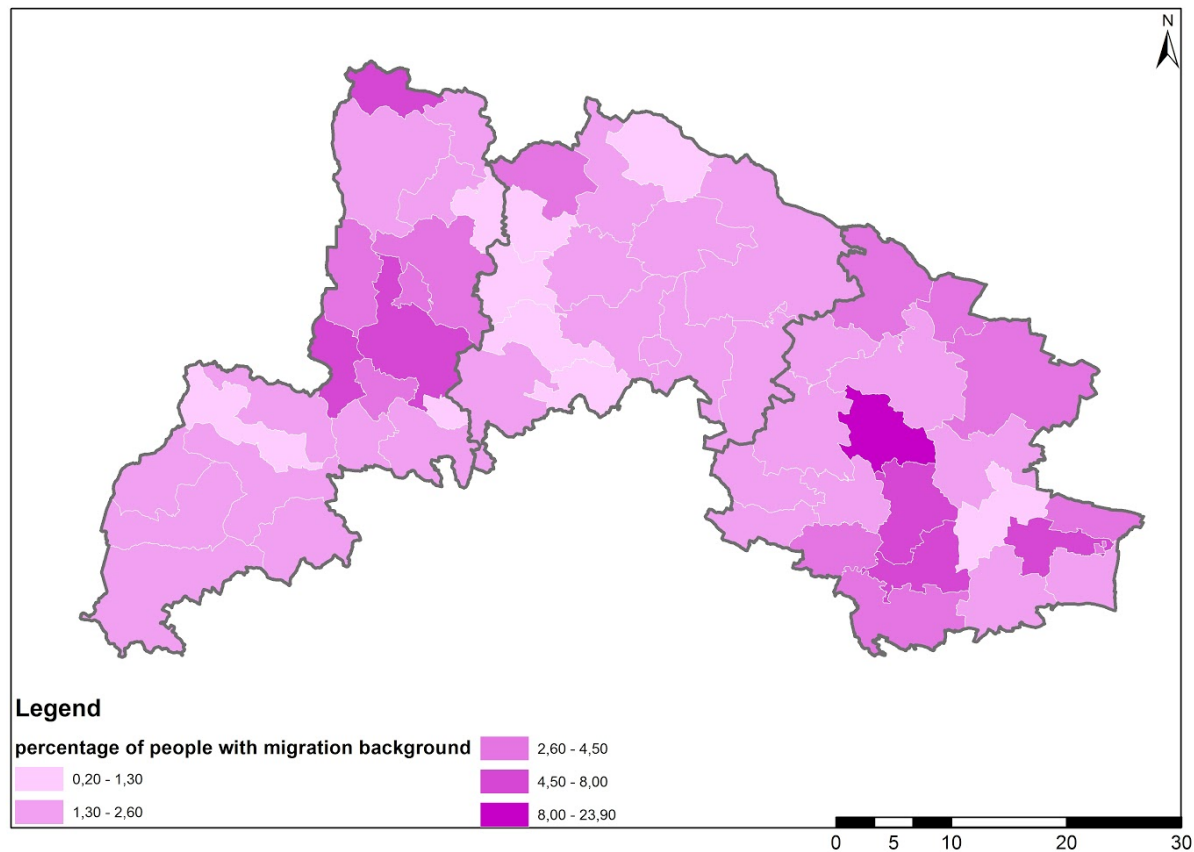


(own representation, source: Statistik Austria 2014; data.gv.at 2016)

Ratio of People with Migration Background

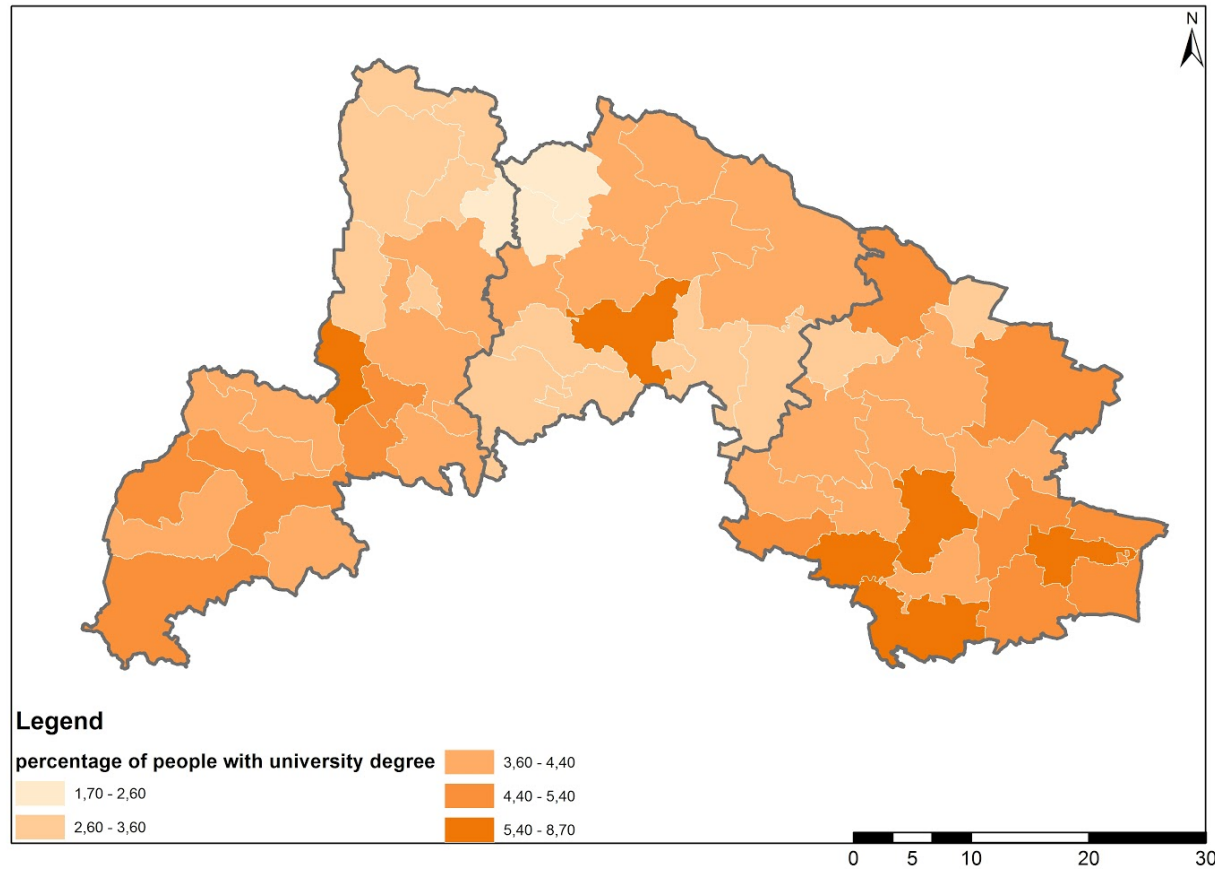


Ratio of People with Migration Background (2014)



(own representation, source:Statistik Austria 2014; data.gv.at 2016)

Ratio of People with University Degree (2016)



(own representation, source: Statistik Austria 2016; data.gv.at 2016)

Ratio of People with only Graduation of Compulsory Schooling (2016)

