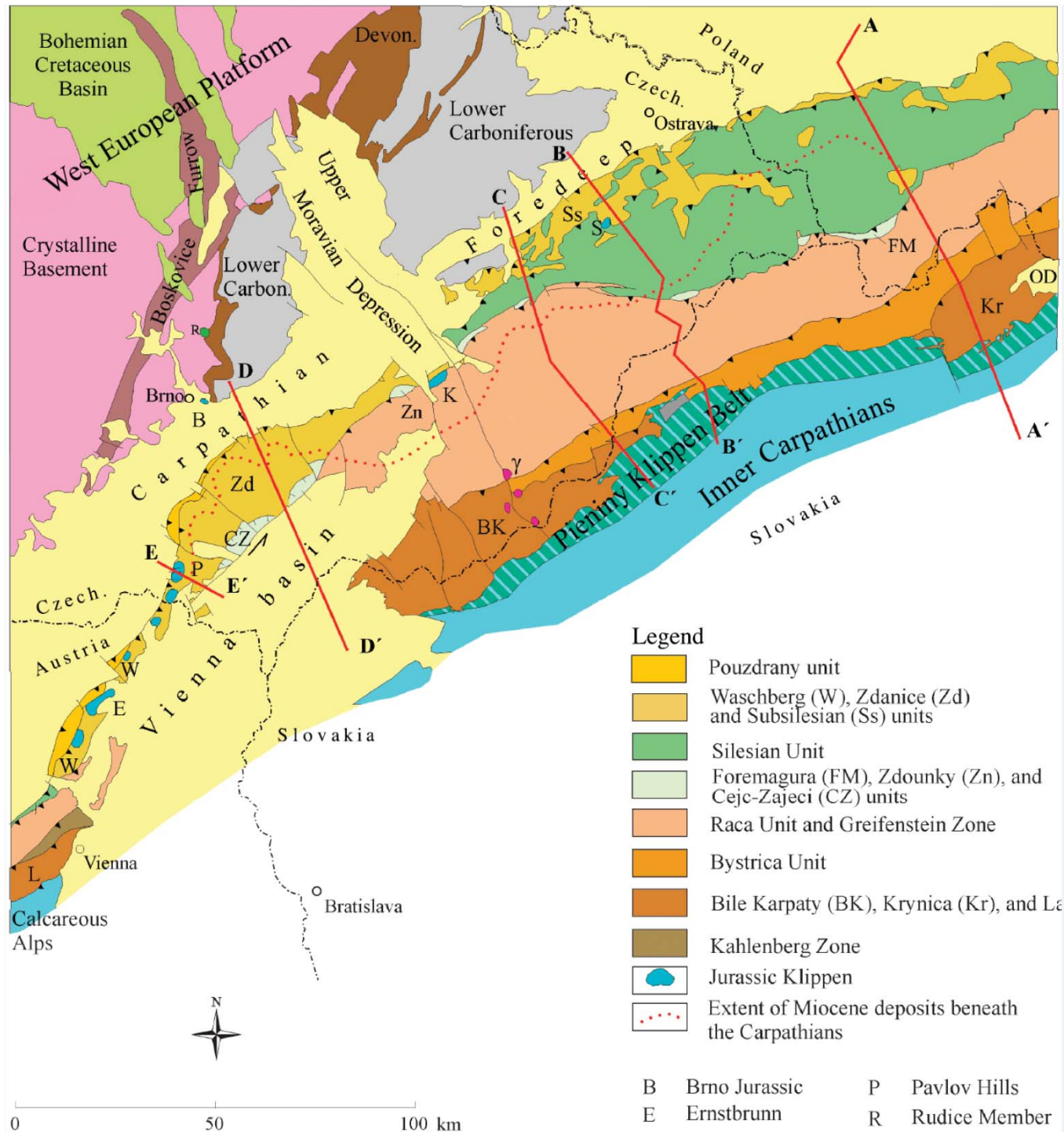


13. Ložiska ropy a plynu v ČR



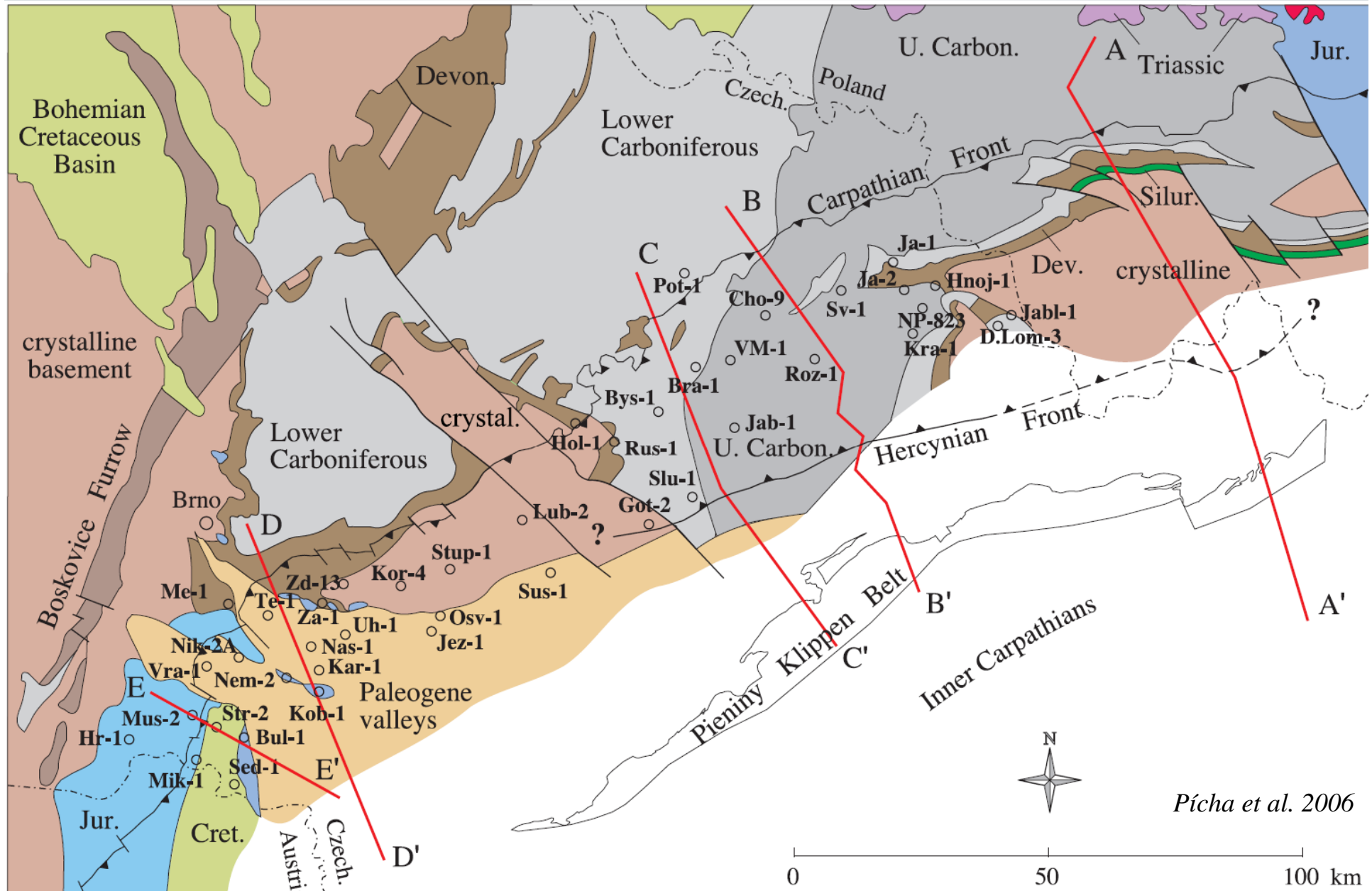
Geologická stavba východního okraje Českého masívu a Západních karpát

Hlavní seismická linie

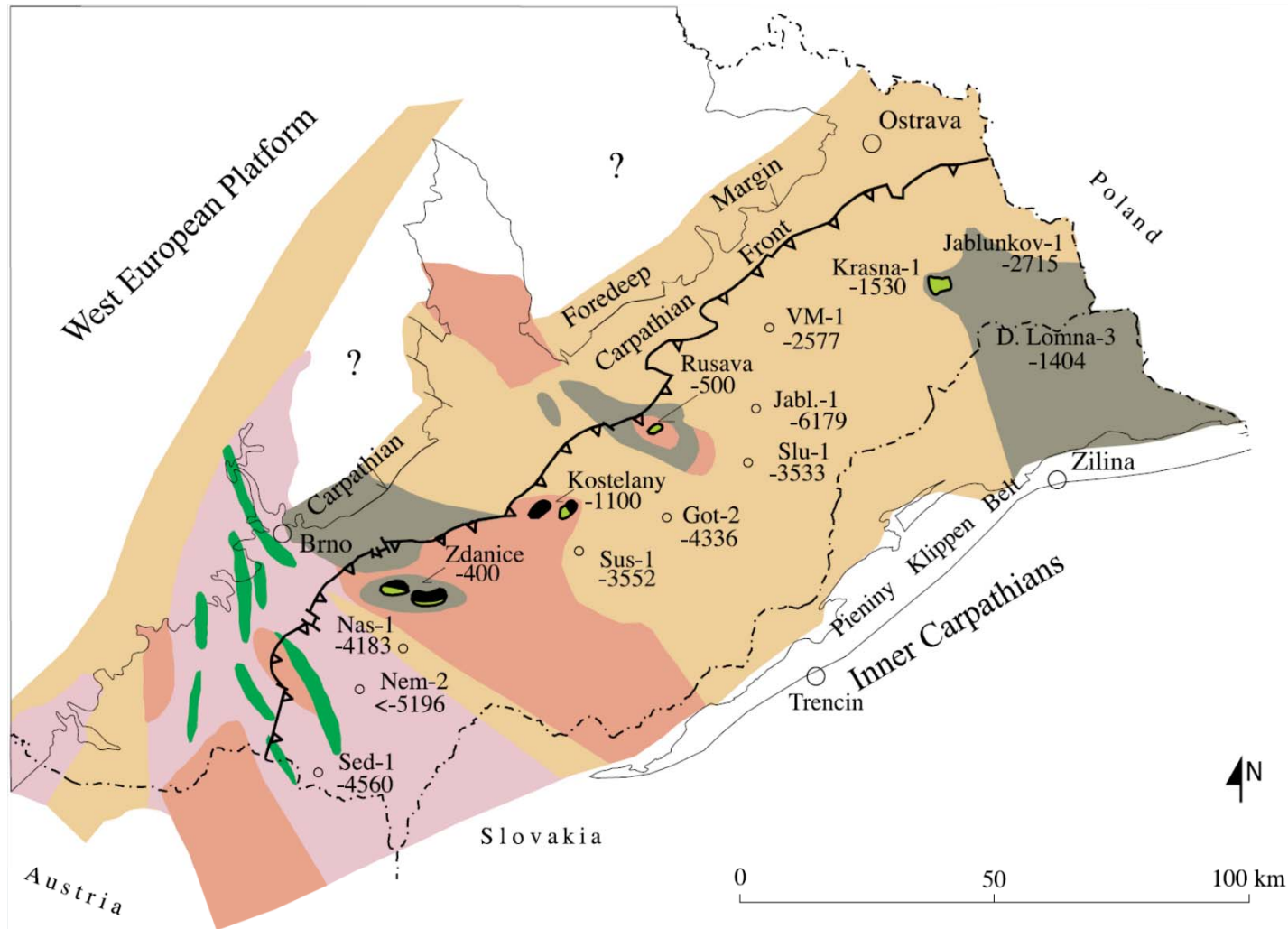


Pícha et al. 2006





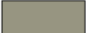
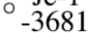


Geologická stavba Čes. masívu pod příkrovy Záp. Karpat



Ložiska ropy v krystaliniku pod neogénem a příkrovy





Legend

- | | | | |
|---|--|--|--|
|  | phyllite, paragneiss, greenschist, amphibolite |  | hornblendite |
|  | granite, granodiorite, syenite |  | -400 oil (green) and gas (red) fields, depth in meters below sea level to crystalline basement |
|  | diorite, tonalite, gabbro |  | Je-1 well depth in meters below sea level to crystalline basement |
|  | biotite granodiorite |  | front of Carpathian thrust belt |

Pícha et al. 2006

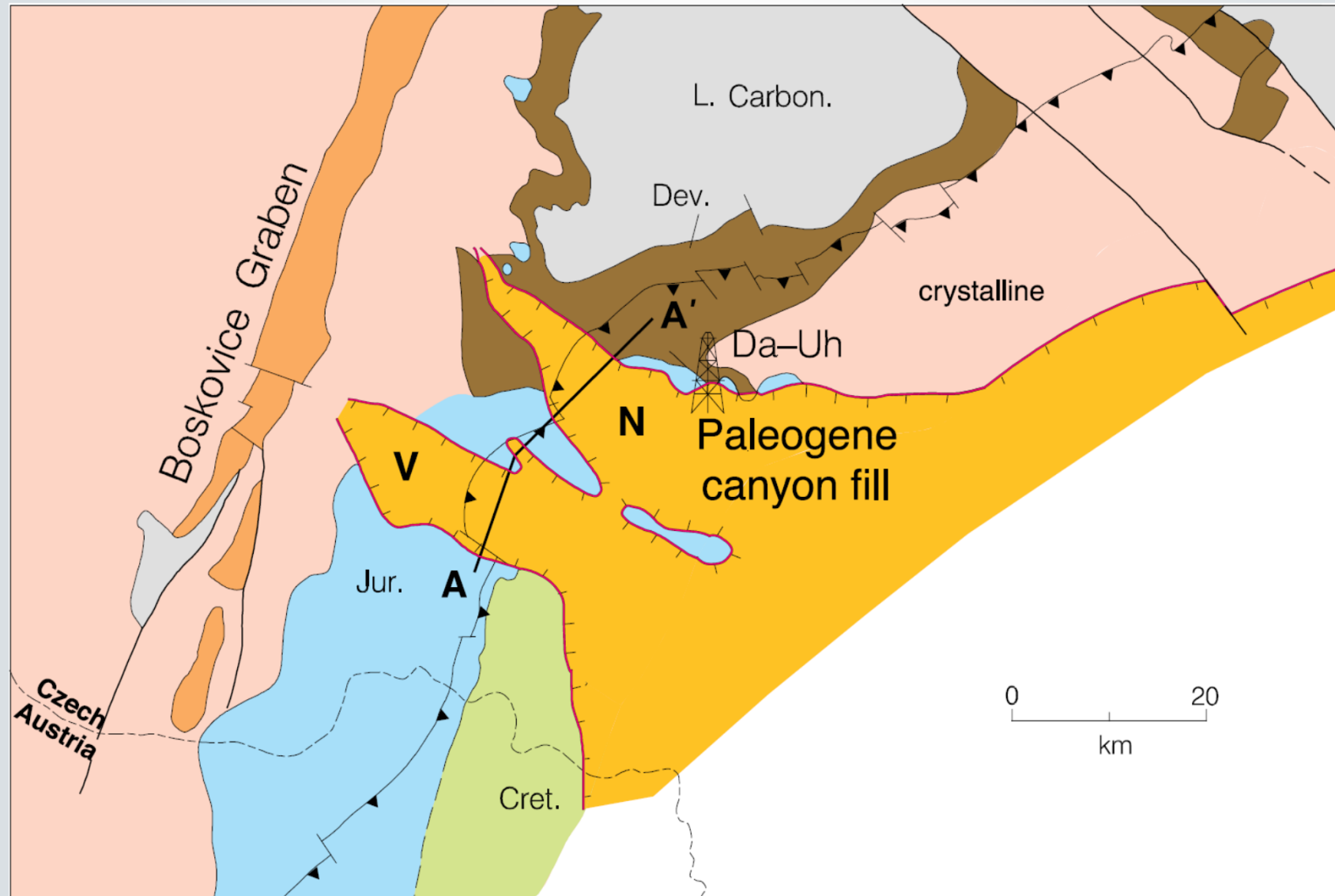
Stratigrafie

Uhlovodíkové systémy

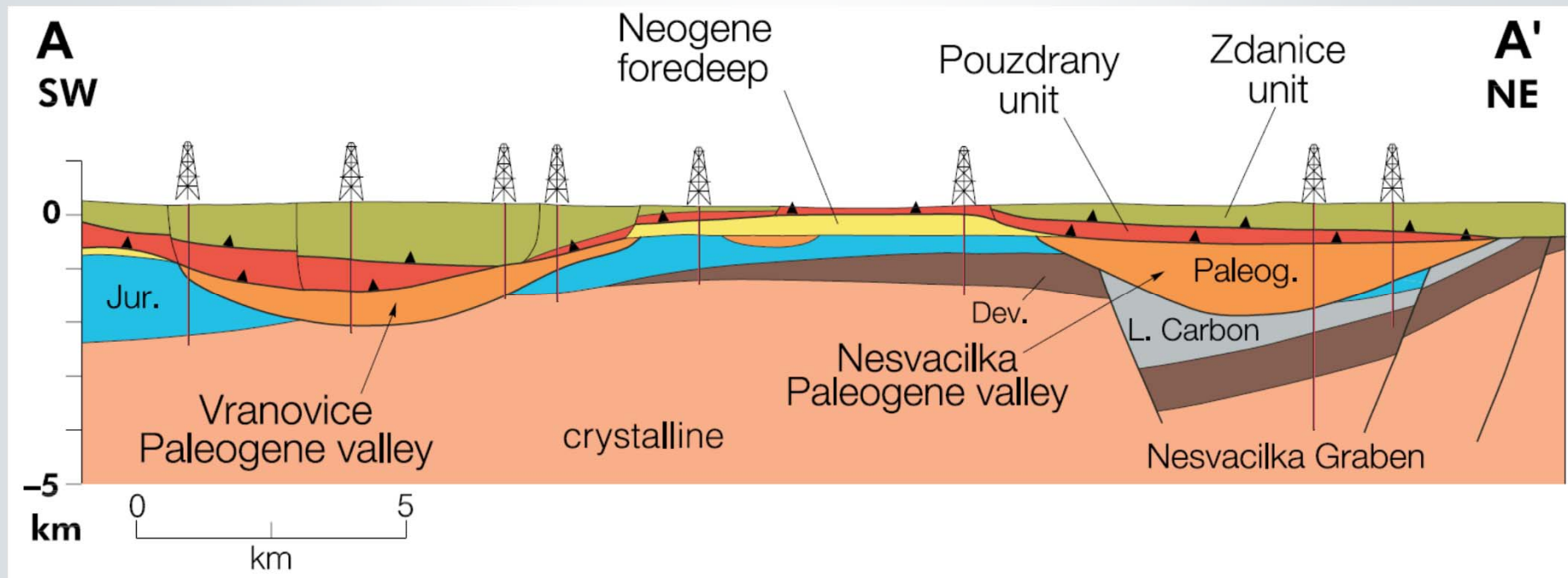
			Source Rock	Reservoir	Hydro-carbons		
Cenozoic	Quaternary	Alpine System					
	Neogene	molasse	active margins		(R)	● ☀	 sands
	Paleogene			valleys	II-III (type)	(R)	● ☀
Mesozoic	Cretaceous	passive margins	synrift		(R)		 marls
	Jurassic				II-III	(R)	●
	Triassic	Hercynian System					
	Permian	Hercynian System					
Paleozoic	Carboniferous	molasse	active margins			☀	
				flysch	II-III		●
		passive margins		(R)	●	gas	
	Devonian	synrift		=			
	Silurian						
Ordovician							
Cambrian							
Precambrian		crystal. rocks		(R)	●		

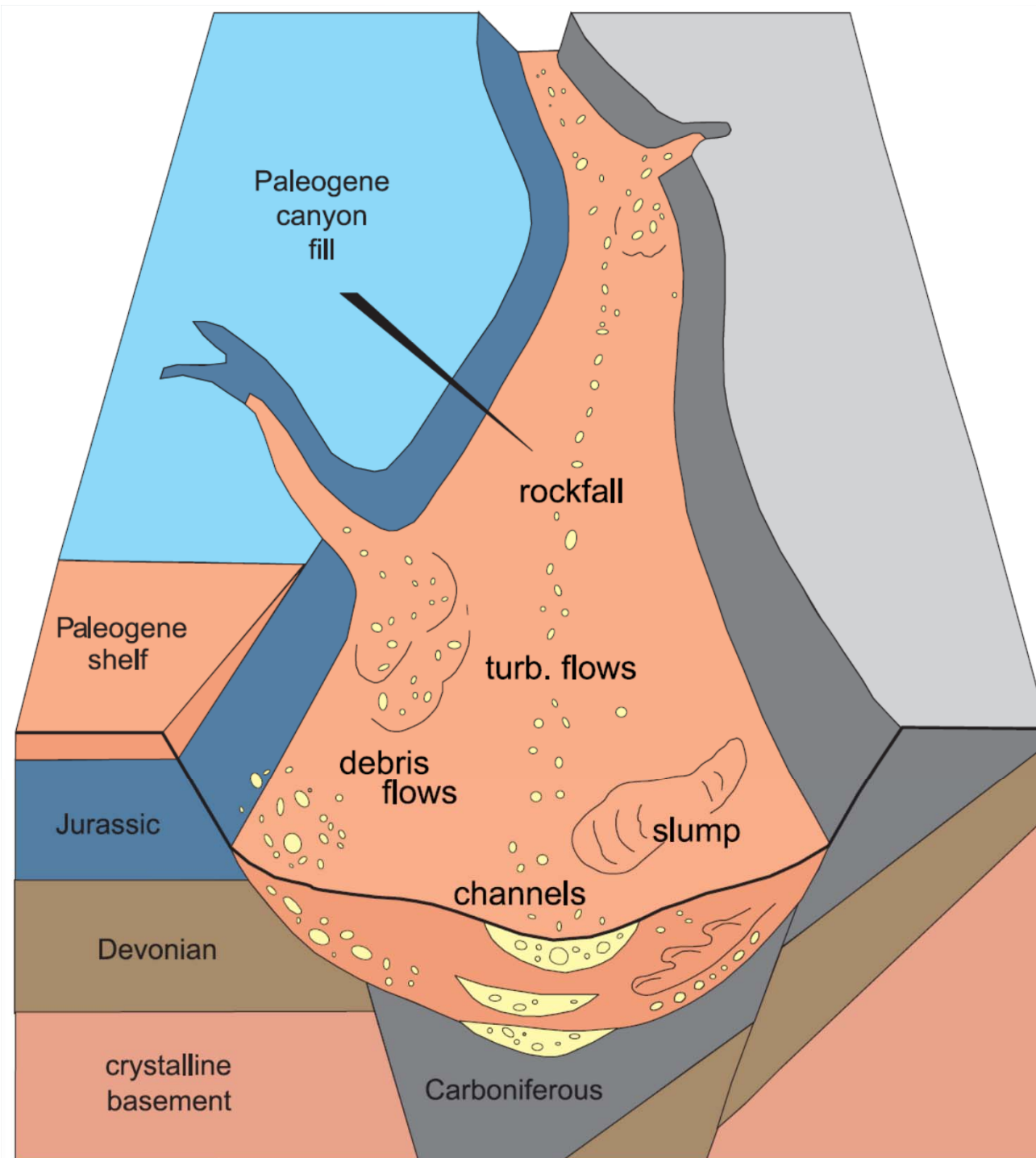
Litologie - facie

Odkrytá geol. mapa nesvačilského a vranovického příkopu



JZ - SV řez napříč vranovickým a nesvačilským příkopem



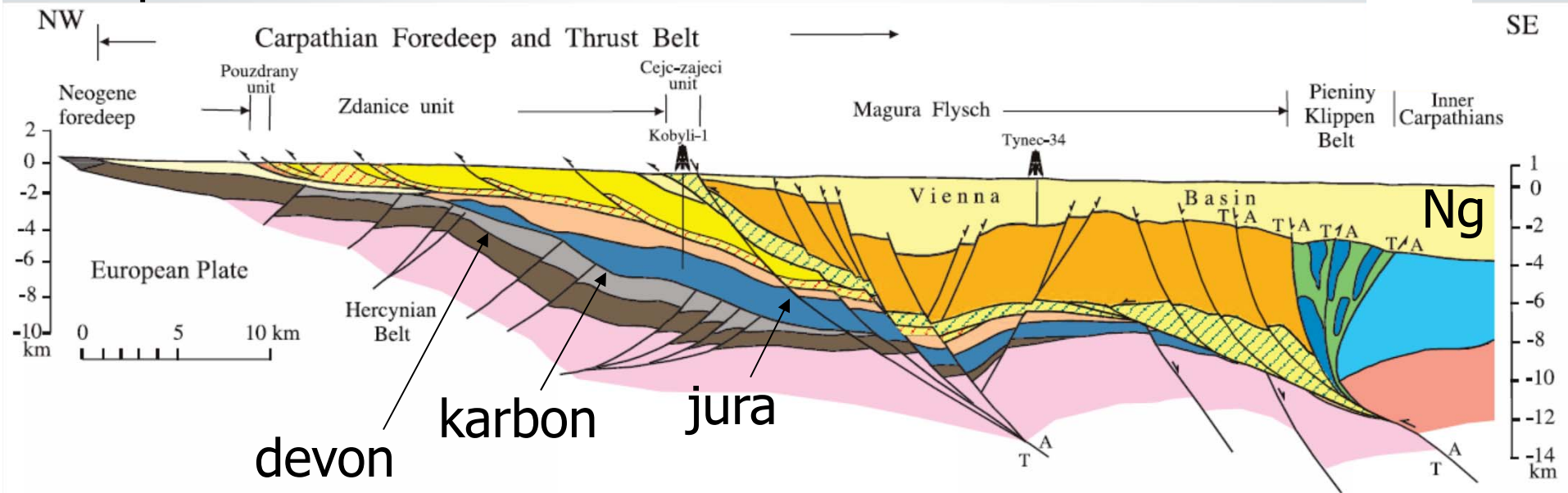


Depoziční systémy nesvačilského kaňonu

Pícha et al. 2006

Vnější skupina příkrovů flyšového pásma Západních Karpat

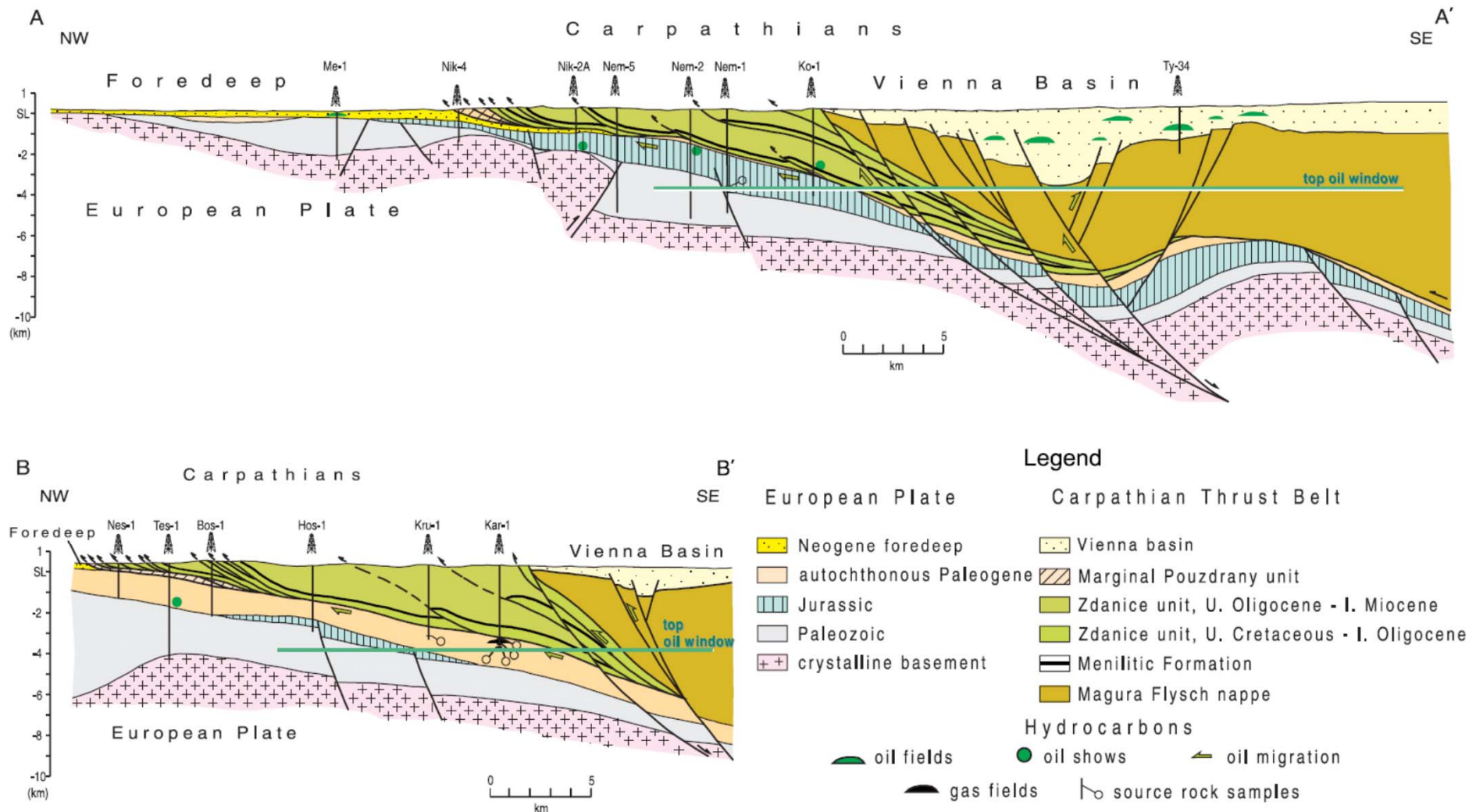
ždánická j.
pozdřanská



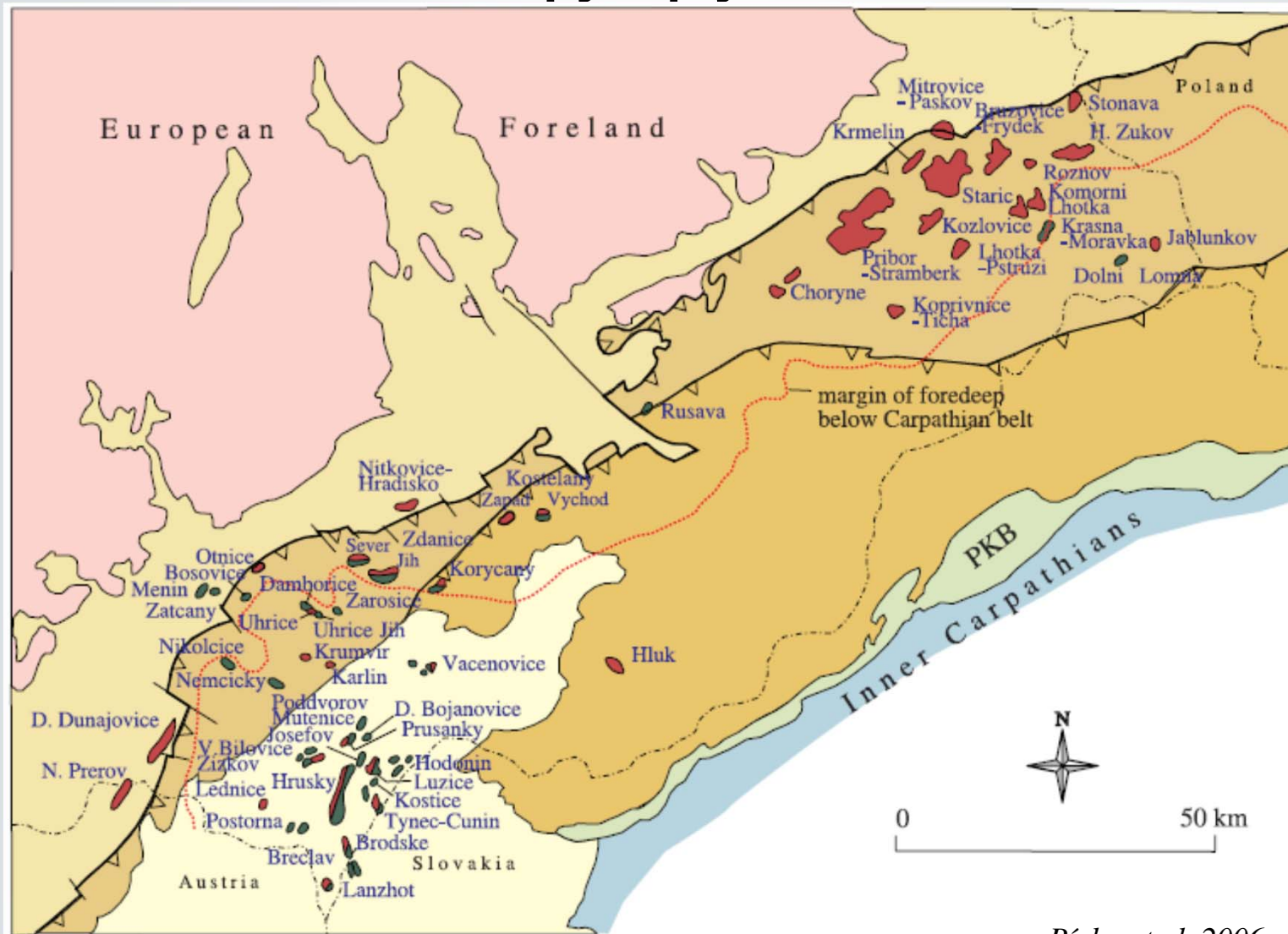
Magurská
jednotka

Bradlové
pásmo

Ložiska ropy a plynu v regionálních řezech



Ložiska ropy a plynu v ČR



Pícha et al. 2006

Legend

- | | | | | | |
|---|------------------------------|---|------------------------|---|--------------------|
|  | Neogene Foredeep |  | Magura group of nappes |  | oil fields |
|  | External units of Flysč belt |  | Vienna basin |  | gas fields |
| | | | |  | oil and gas fields |