

MUNI
SCI



HR EXCELLENCE IN RESEARCH

A STORY OF TEETH



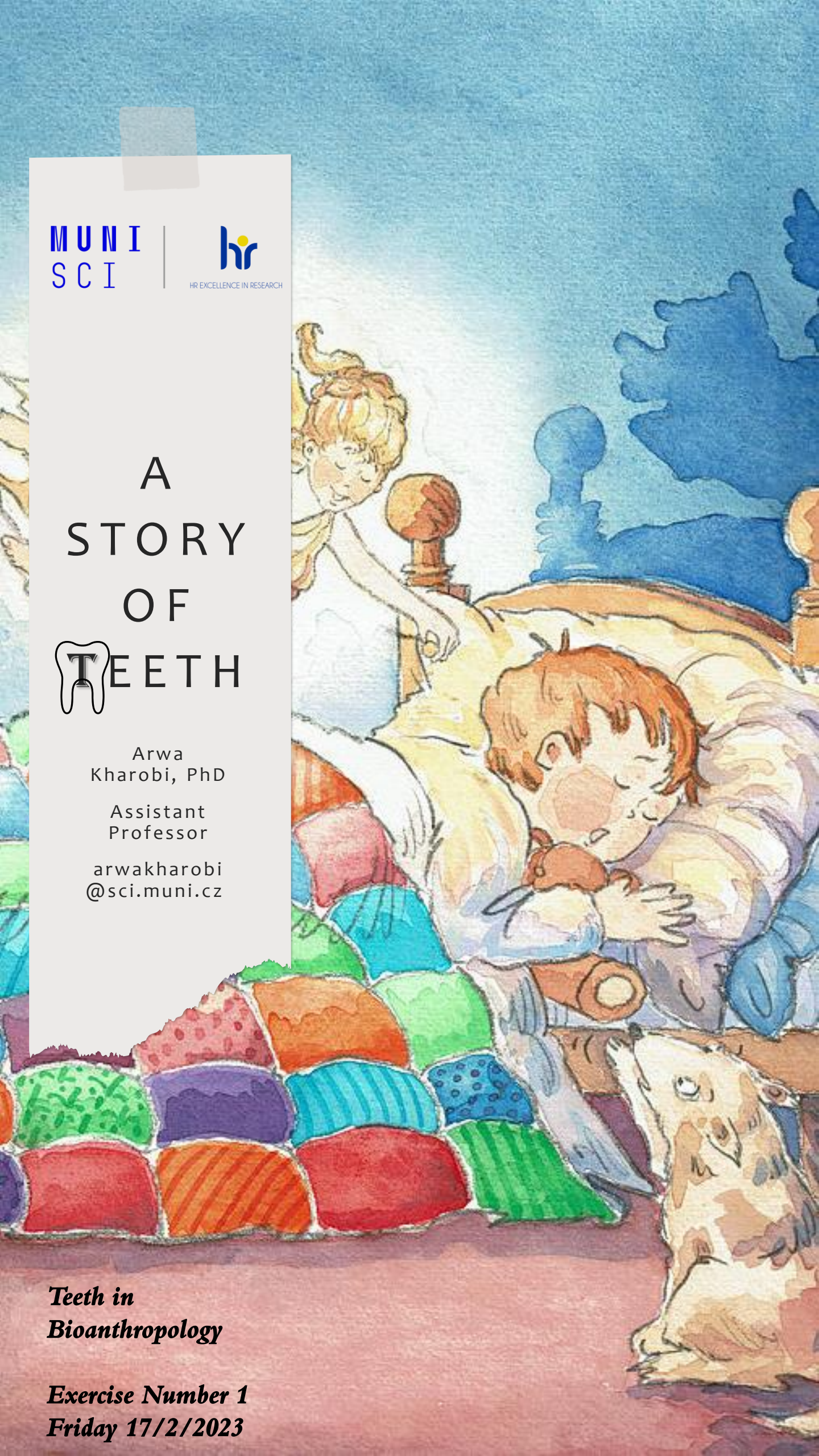
Arwa
Kharobi, PhD

Assistant
Professor

arwaxharobi
@sci.muni.cz

***Teeth in
Bioanthropology***

***Exercise Number 1
Friday 17/2/2023***





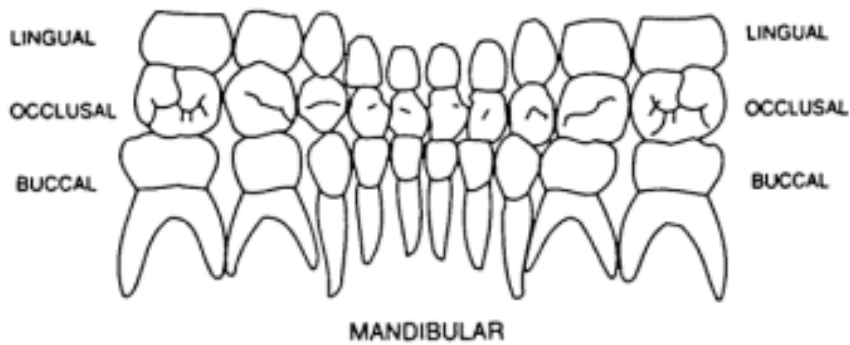
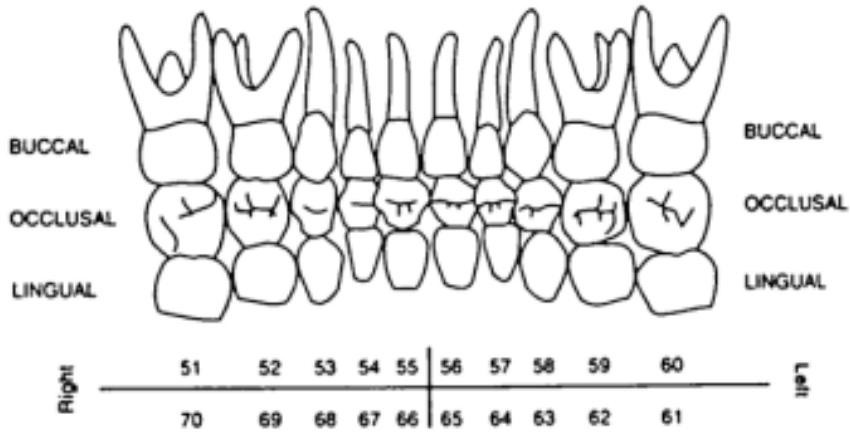
THE UNIVERSITY OF ARIZONA

ARIZONA STATE MUSEUM

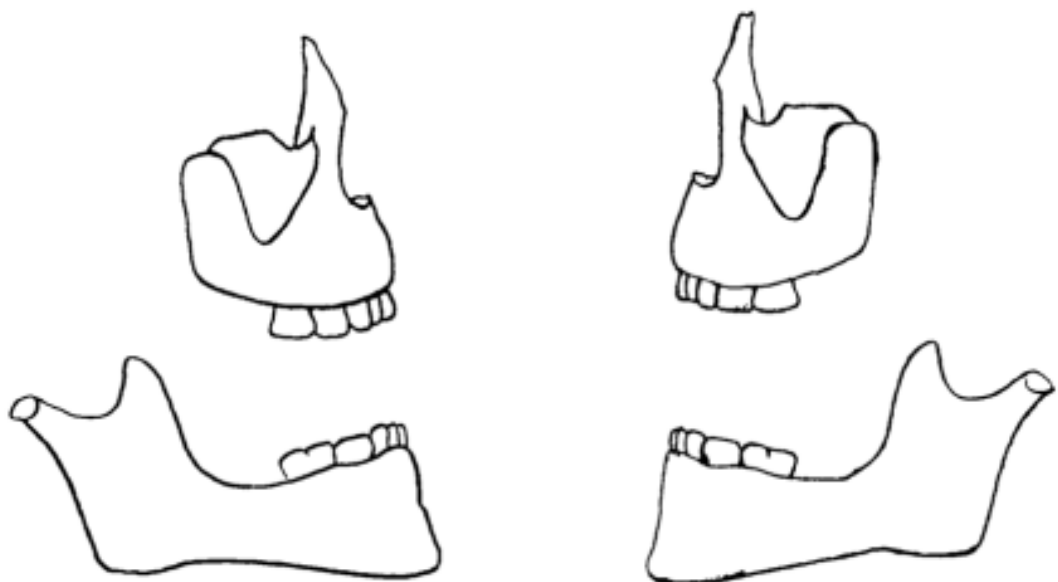
DENTAL INVENTORY & PATHOLOGY RECORDING FORM

Note pathology locations and severity, wear, and any additional observations.

MAXILLARY



MANDIBULAR



Buccal View

Additional observations:

Blank area for additional observations.

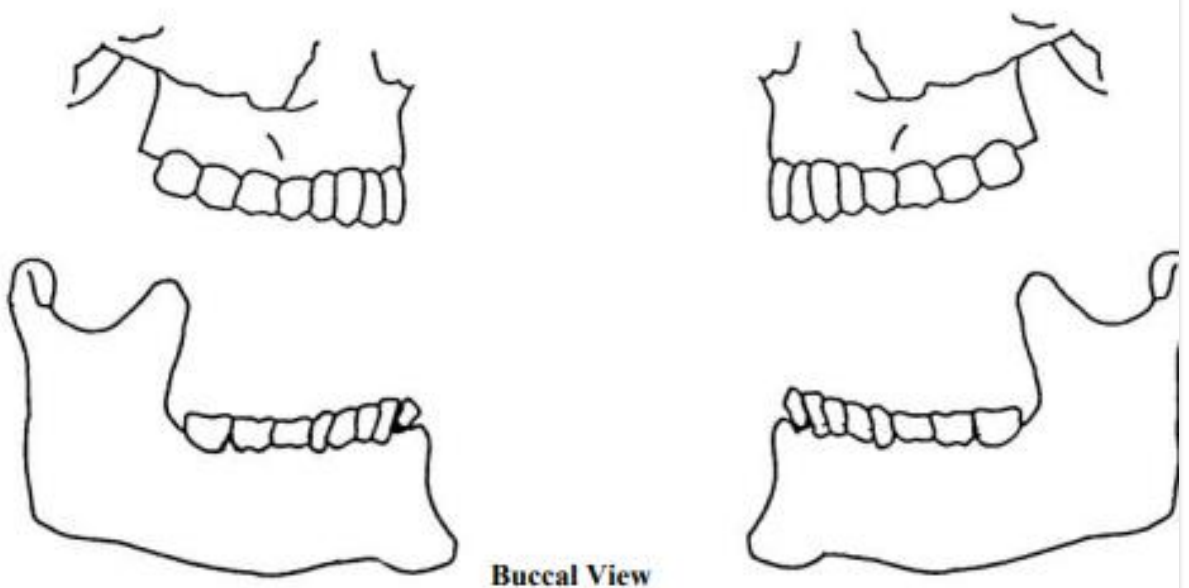
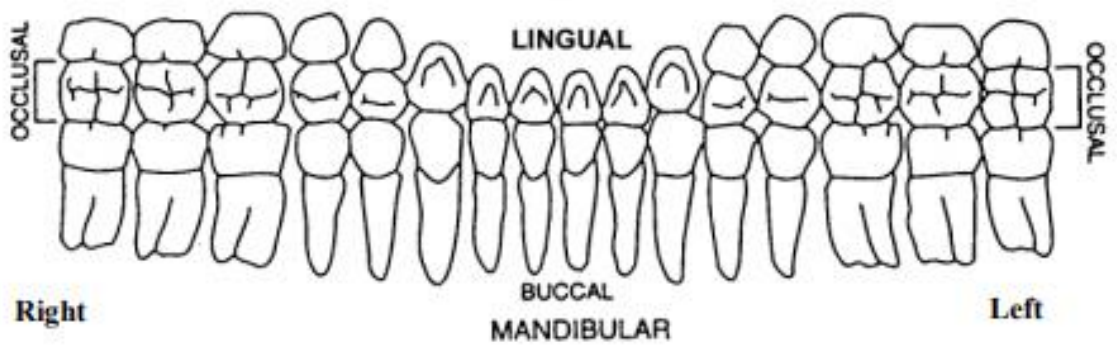
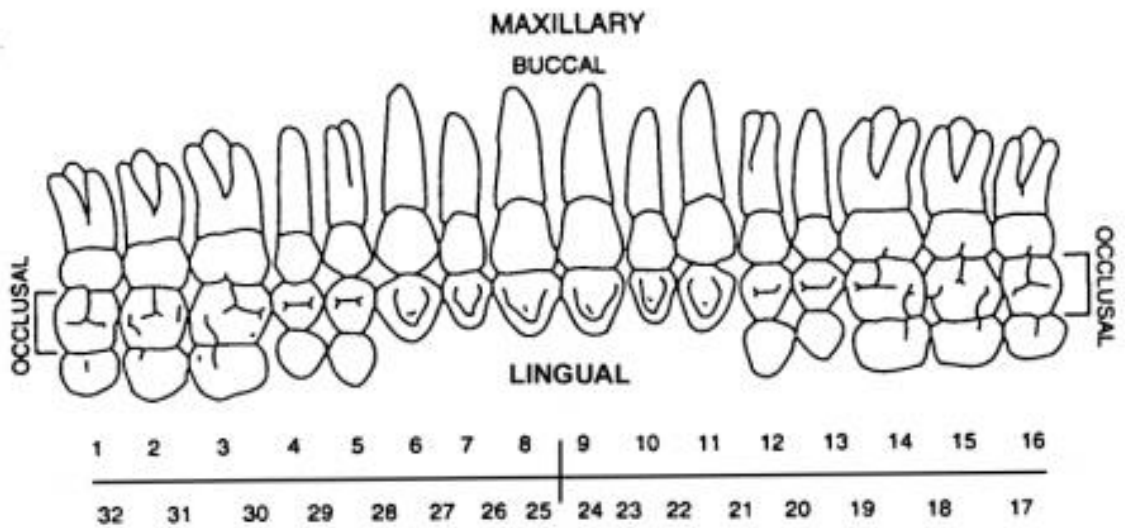


THE UNIVERSITY OF ARIZONA

ARIZONA STATE MUSEUM

DENTAL INVENTORY & PATHOLOGY RECORDING FORM PERMANENT - RECORDING FORM

Note pathology locations and severity, wear, and any additional observations.



Additional observations: