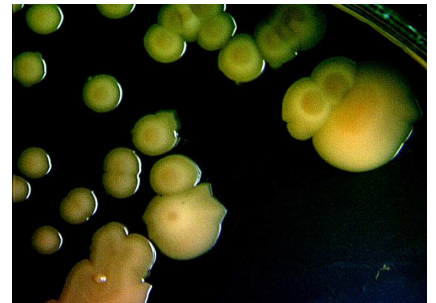
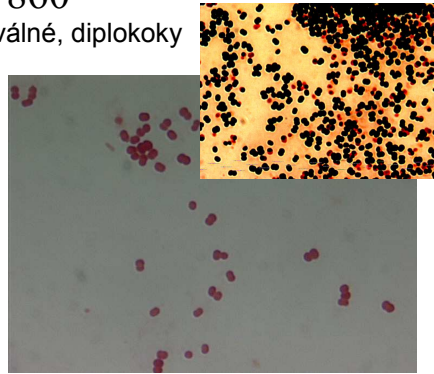
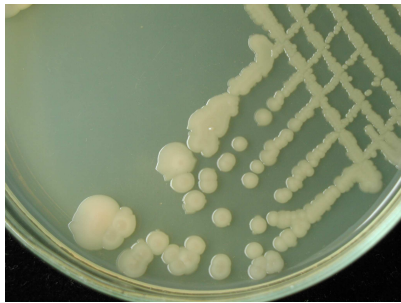


Tvar bakteriální buňky a kolonie – okraje, povrch, barva

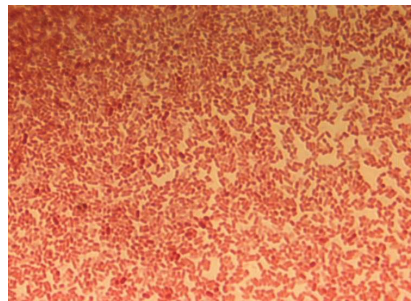
Sporosarcina ureae CCM 860

•Planococcaceae, G+, •kulaté nebo oválné, diplokoky



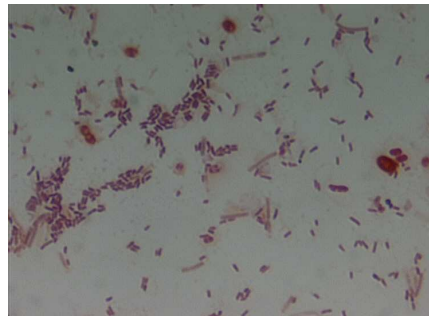
Serratia marcescens CCM 303

Enterobacteriaceae, G-, vyvýšené středy kolonií



Azotobacter vinelandii CCM 289

Pseudomonadaceae, krátké G- tyčky



Bacillus thuringiensis CCM 19

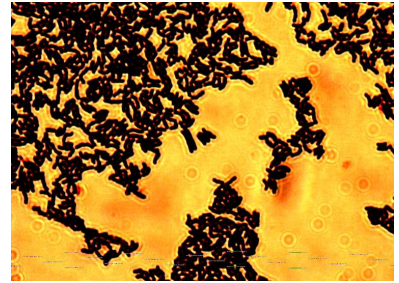
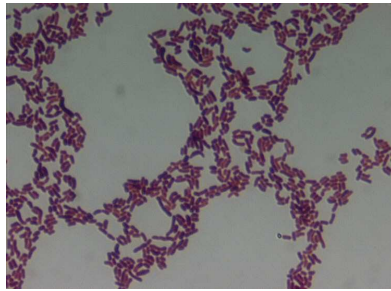
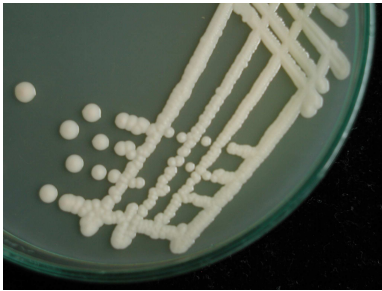
Bacillaceae, G+ tyčky, vláknitý okraj kolonie



Arthrobacter crystallopoietes CCM 2386

Actinobacteria, čeleď *Micrococcaceae*

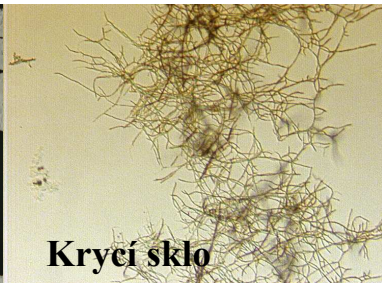
třída *Actinobacteria*, čeleď *Micrococcaceae*, G+ tyčky, kokotyčky až koky
hladký okraj, pravidelný kruhový tvar



Streptomyces griseus CCM 3362

Actinobacteria, čeleď *Streptomycetaceae*

dlouhá vlákna, kulaté spory v řetízích, substrátové a vzdušné mycélium, G+, drsný povrch



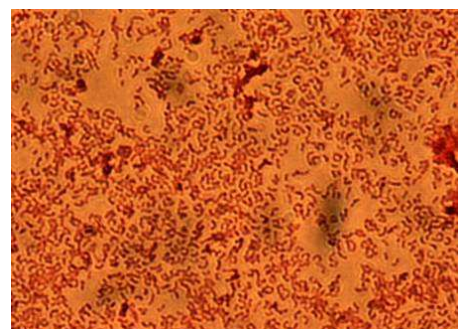
Nocardia carnea CCM 2756

Nocardiaceae, tyčky, vlákna, grampozitivní nebo variabilní



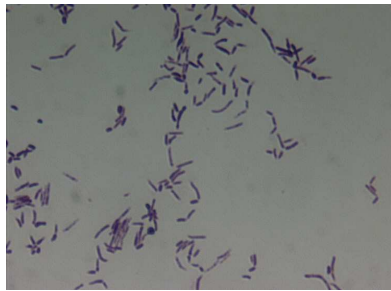
Ancylobacter aquaticus CCM 2549

Alphaproteobacteria, *Xanthobacteraceae*, G- rohlíčkovitě zakřivené tyčky, drobné kolonie

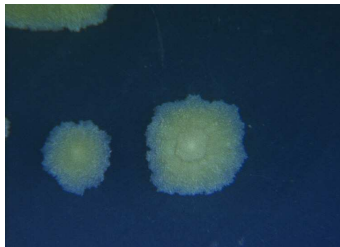


Rhodococcus erythropolis CCM 277

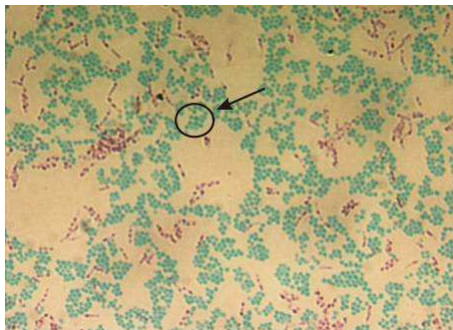
G+ tyčky, netvoří vzdušné mycélium, hladké, vypouklé kolonie



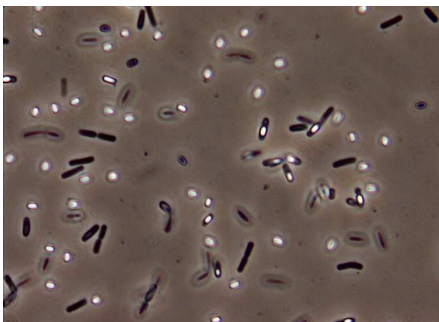
Mycobacterium phlei CCM 5639



Micrococcus luteus CCM 169 – Ziehl Nielsenovo zbarvení



B. subtilis CCM 2216, G+, tyčky, dvojice, i spory, nativní barvení, fázový kontrast



Pseudomonas fluorescens CCM 2115
Serratia marcescens CCM 303
Micrococcus luteus CCM 169
Kocuria rosea CCM 339
Mycobacterium phlei CCM 5639
Nocardia carnea CCM 2756
Sterptomyces griseus ssp. griseus CCM 2386
Bacillus thuringiensis CCM 19
Bacillus cereus CCM 2010
Bacillus megaterium CCM 2007
Sporosarcina ureae CCM 860