

Detector	Reporter	Start	End	Threshold			
SYBR	SYBR		2	12	0.319573		
Well	SampleName	Ct			delta Ct	deltadelta Ct	2^-deldelCt
1	STDPR5	16.08					
2	STDPR1a	17.96					
3	STDEF1	23.49					
4	STDNADHox	18.31					
5	PR5-0h	28.28			5.83	0.00	1.0
6	PR1a-0h	26.76					
7	EF1-0h	22.45					
8	NADHox-0h	20.30					
9	PR5	17.31					
10	PR5	28.30					
13	STDPR5	19.72					
14	STDPR1a	21.01					
15	STDEF1	24.99					
16	STDNADHox	22.63					
17	PR5-6h_a	23.87			2.91	-2.92	7.6
18	PR1a-6h_a	25.20					
19	EF1-6h_a	20.96					
20	NADHox-6h_a	20.17					
21	PR1a	18.54					
22	PR1a	30.45					
25	STDPR5	26.73					
26	STDPR1a	23.54					
27	STDEF1	28.54					
28	STDNADHox	26.14					
29	PR5-6h_b	26.68			4.95	-0.87	1.8
30	PR1a-6h_b	28.46					
31	EF1-6h_b	21.72					
32	NADHox-6h_b	23.31					
33	EF1a						
34	EF1a	18.08					
37	STDPR5	22.78					
38	STDPR1a	28.20					
39	STDEF1	31.59					
40	STDNADHox	29.44					
41	PR5-24h_c	23.50			-1.18	-7.00	128.3
42	PR1a-24h_c	25.86					
43	EF1-24h_c	24.67					
44	NADHox-24h_c	26.31					
45	NADHox	14.81					
46	NADHox	32.36					
49	STDPR5	29.42					
50	STDPR1a	31.59					
51	STDEF1	28.84					
52	STDNADHox	29.73					
53	PR5-24h_d	20.80			-1.45	-7.27	154.4
54	PR1a-24h_d	25.03					
55	EF1-24h_d	22.25					

56 NADHox-24h\_d 21.40

log

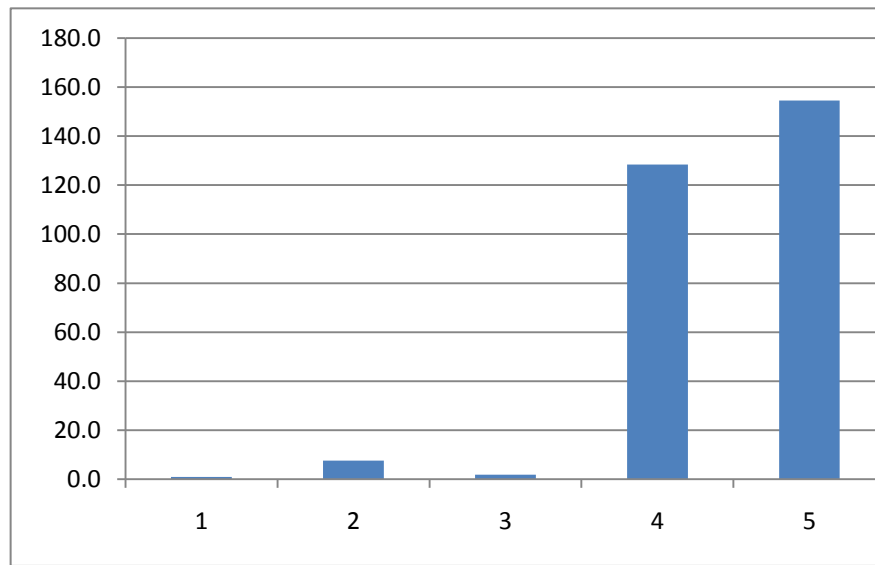
0

0.9

0.3

2.1

2.2



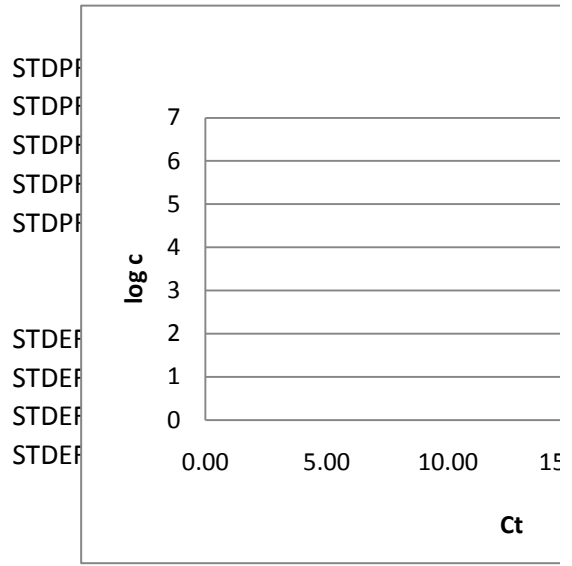


-
-
-
-
-
-
- ■ Řady1
-
-
-
-
-
-

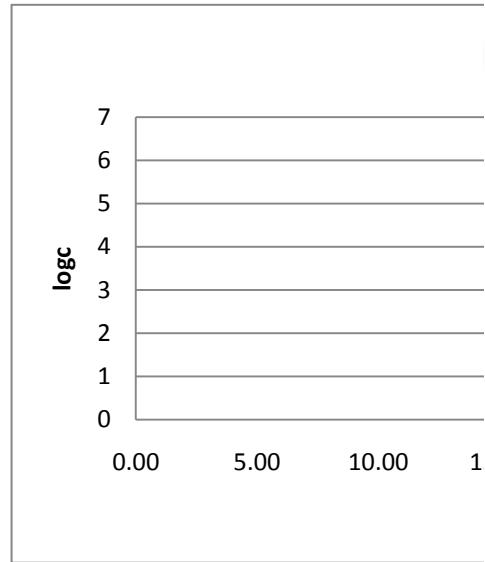
Detector	Reporter	Start	End	Threshold		
SYBR	SYBR	2	12	0.319573		
Well	SampleName	Ct			pocet kopii	pomer HK/vzorek*100 (%)
1	STDPR5	16.08				
2	STDPR1a	17.96				
3	STDEF1	23.49				
4	STDNADHox	18.31				
5	PR5-0h	28.28			265.1	0.02
6	PR1a-0h	26.76				
7	EF1-0h	22.45			1406203.744	
8	NADHox-0h	20.30				
9	PR5	17.31				
10	PR5	28.30				
13	STDPR5	19.72				
14	STDPR1a	21.01				
15	STDEF1	24.99				
16	STDNADHox	22.63				
17	PR5-6h_a	23.87			5345.5	0.11
18	PR1a-6h_a	25.20				
19	EF1-6h_a	20.96			4689207.0	
20	NADHox-6h_a	20.17				
21	PR1a	18.54				
22	PR1a	30.45				
25	STDPR5	26.73				
26	STDPR1a	23.54				
27	STDEF1	28.54				
28	STDNADHox	26.14				
29	PR5-6h_b	26.68			788.5	0.03
30	PR1a-6h_b	28.46				
31	EF1-6h_b	21.72			2532168.8	
32	NADHox-6h_b	23.31				
33	EF1a					
34	EF1a	18.08				
37	STDPR5	22.78				
38	STDPR1a	28.20				
39	STDEF1	31.59				
40	STDNADHox	29.44				
41	PR5-24h_c	23.50			6893.6	2.94
42	PR1a-24h_c	25.86				
43	EF1-24h_c	24.67			234162.7	
44	NADHox-24h_c	26.31				
45	NADHox	14.81				
46	NADHox	32.36				
49	STDPR5	29.42				
50	STDPR1a	31.59				
51	STDEF1	28.84				
52	STDNADHox	29.73				
53	PR5-24h_d	20.80			43161.5	2.60
54	PR1a-24h_d	25.03				
55	EF1-24h_d	22.25			1657601.6	

56 NADHox-24h\_d 21.40

relativni zvyseni



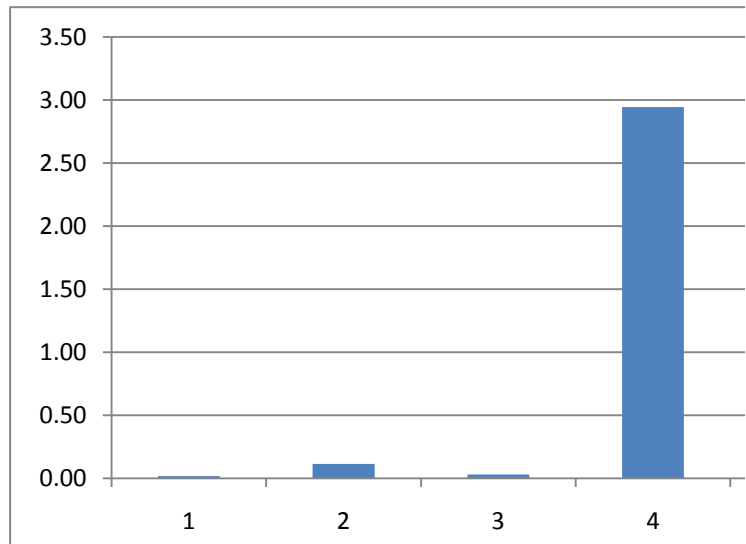
6



1.7

156.2

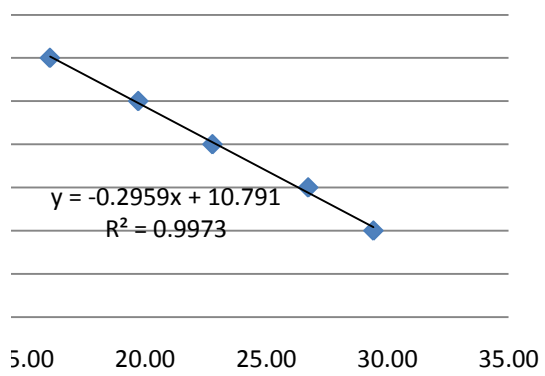
138.1







## PR5



## EF1a

