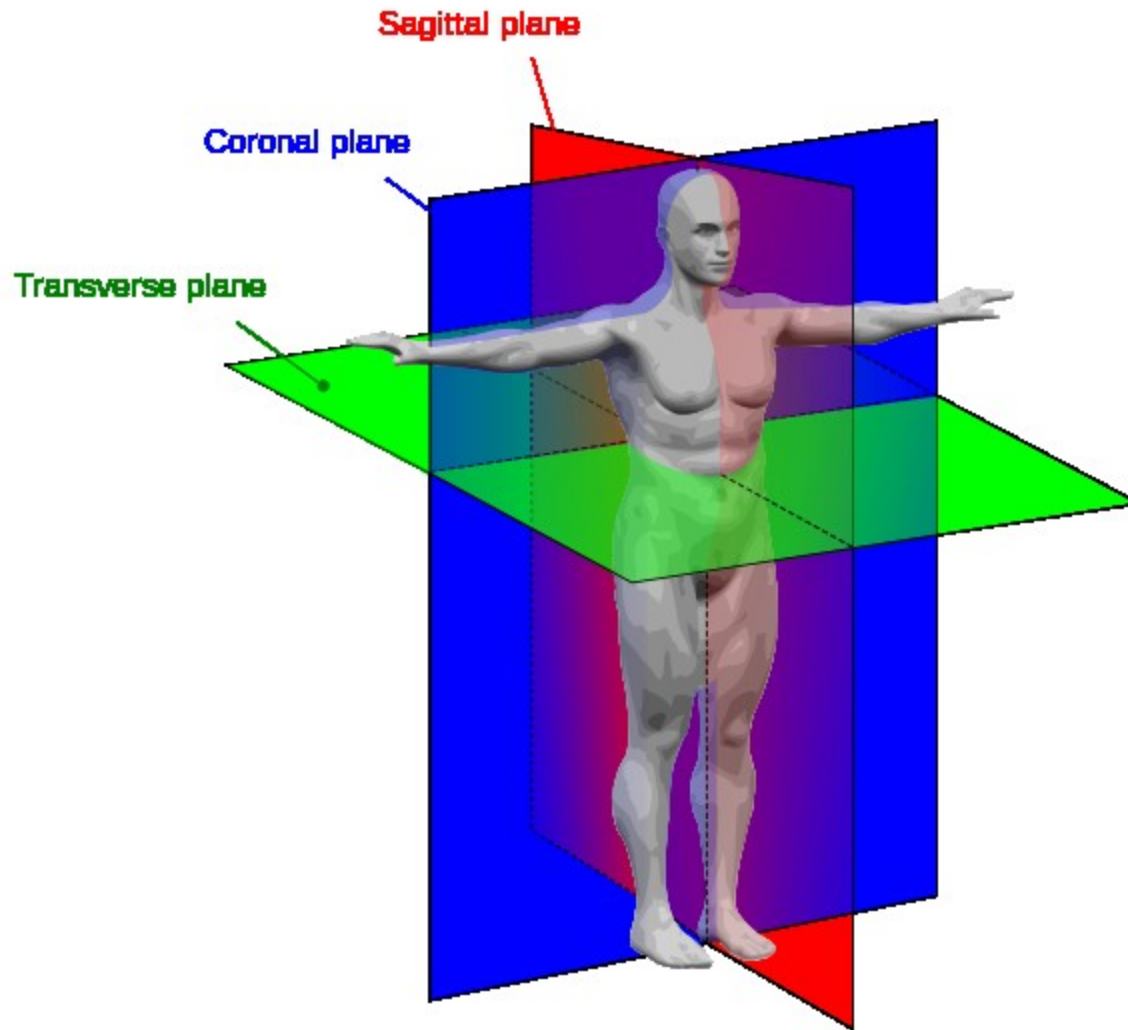
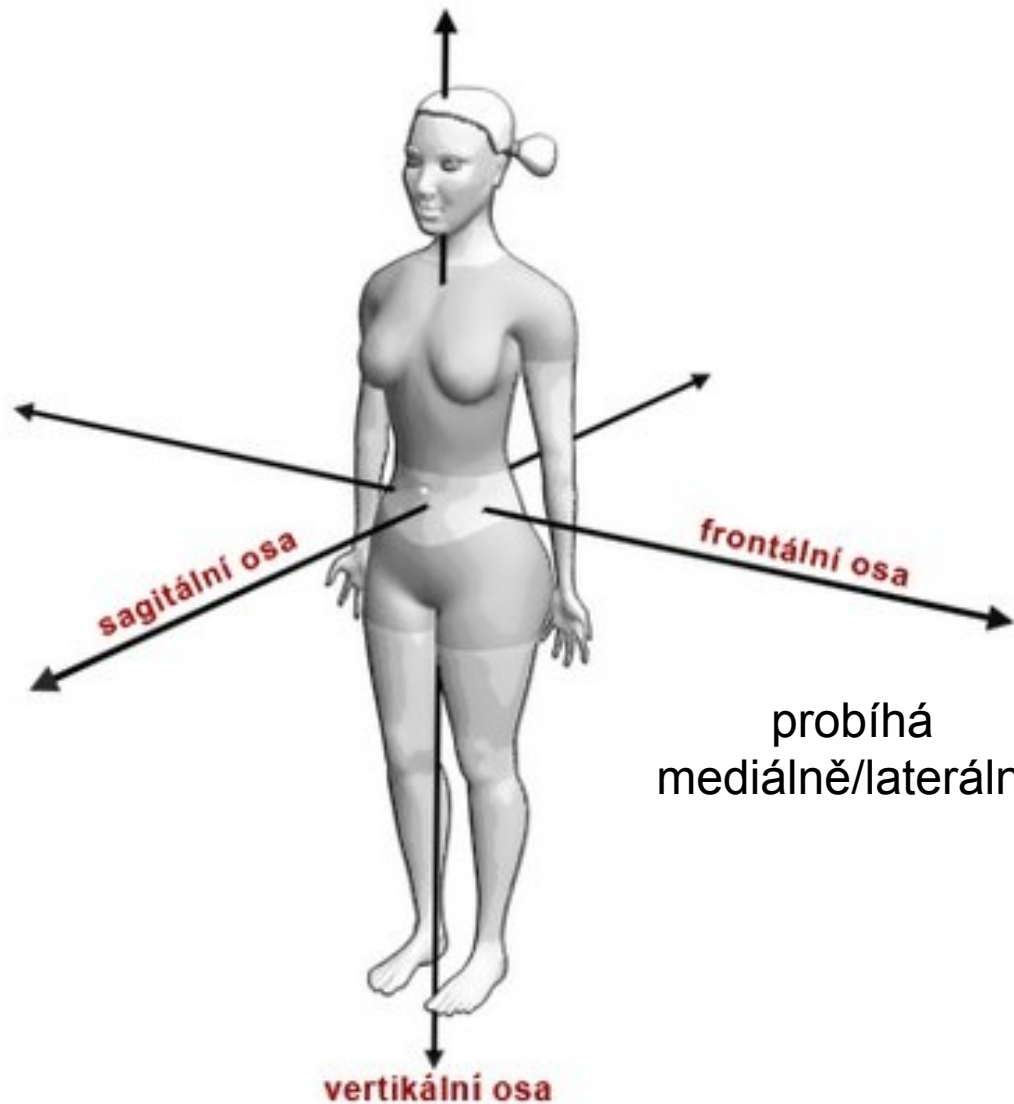


# Orientace na lidském těle

# Základní roviny:



# Osy těla:

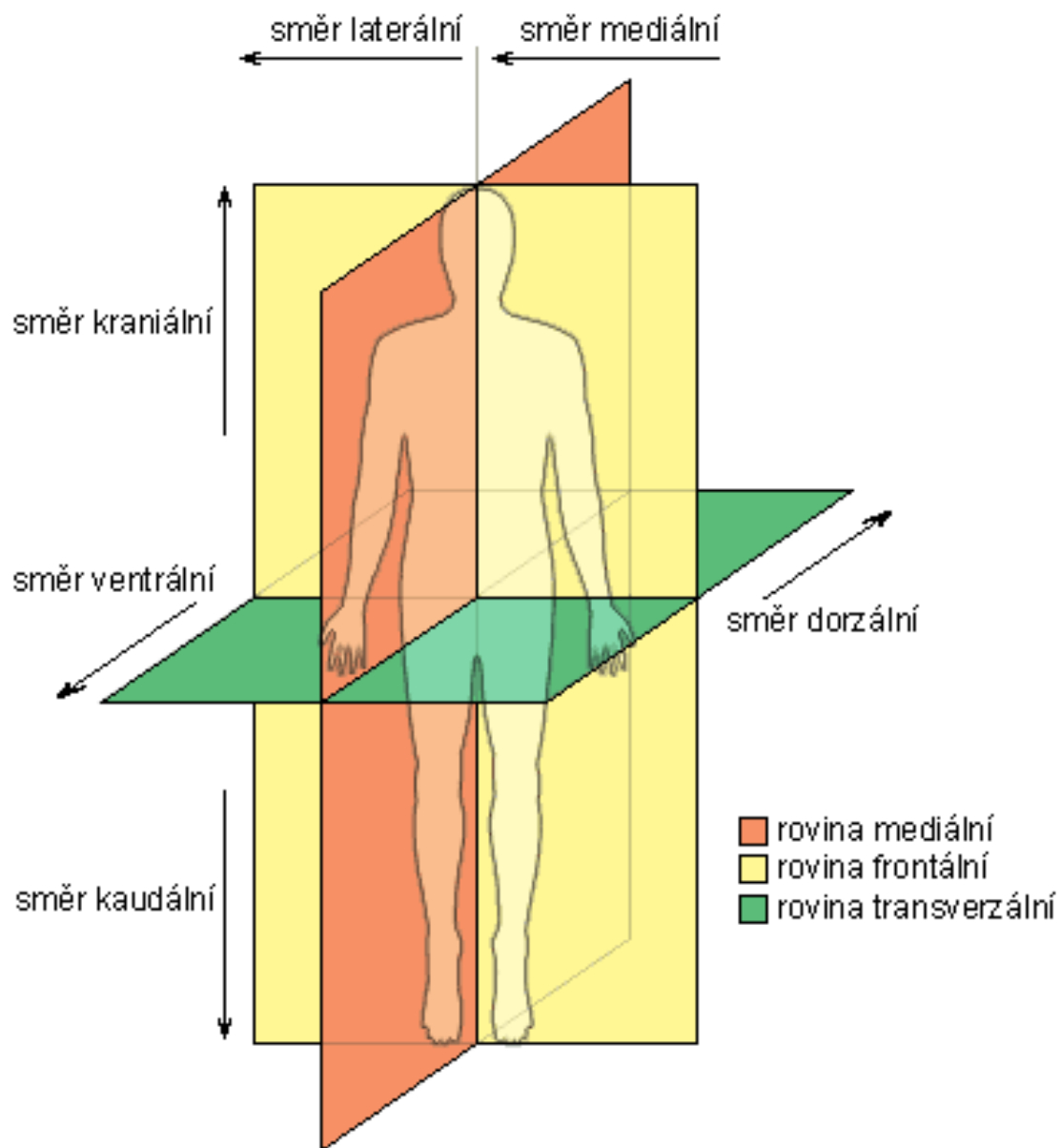


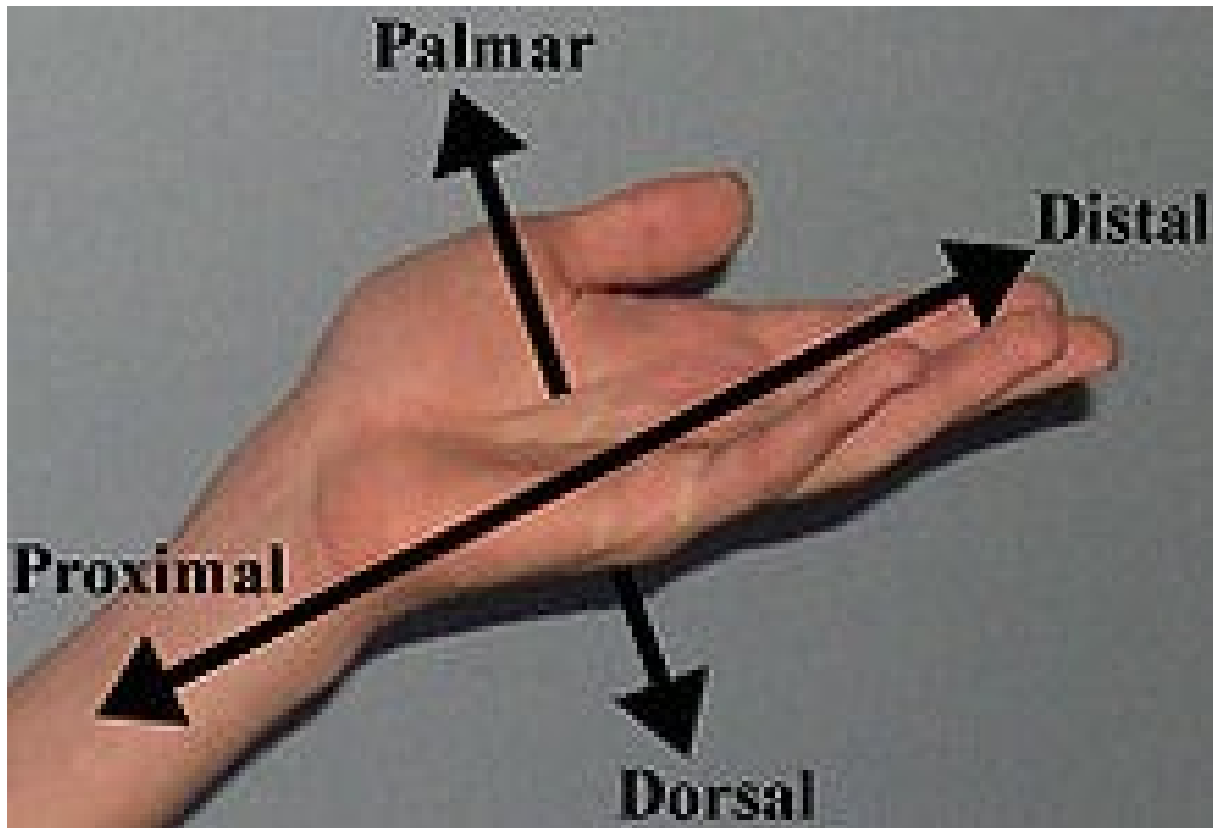
probíhá anterior/posterior

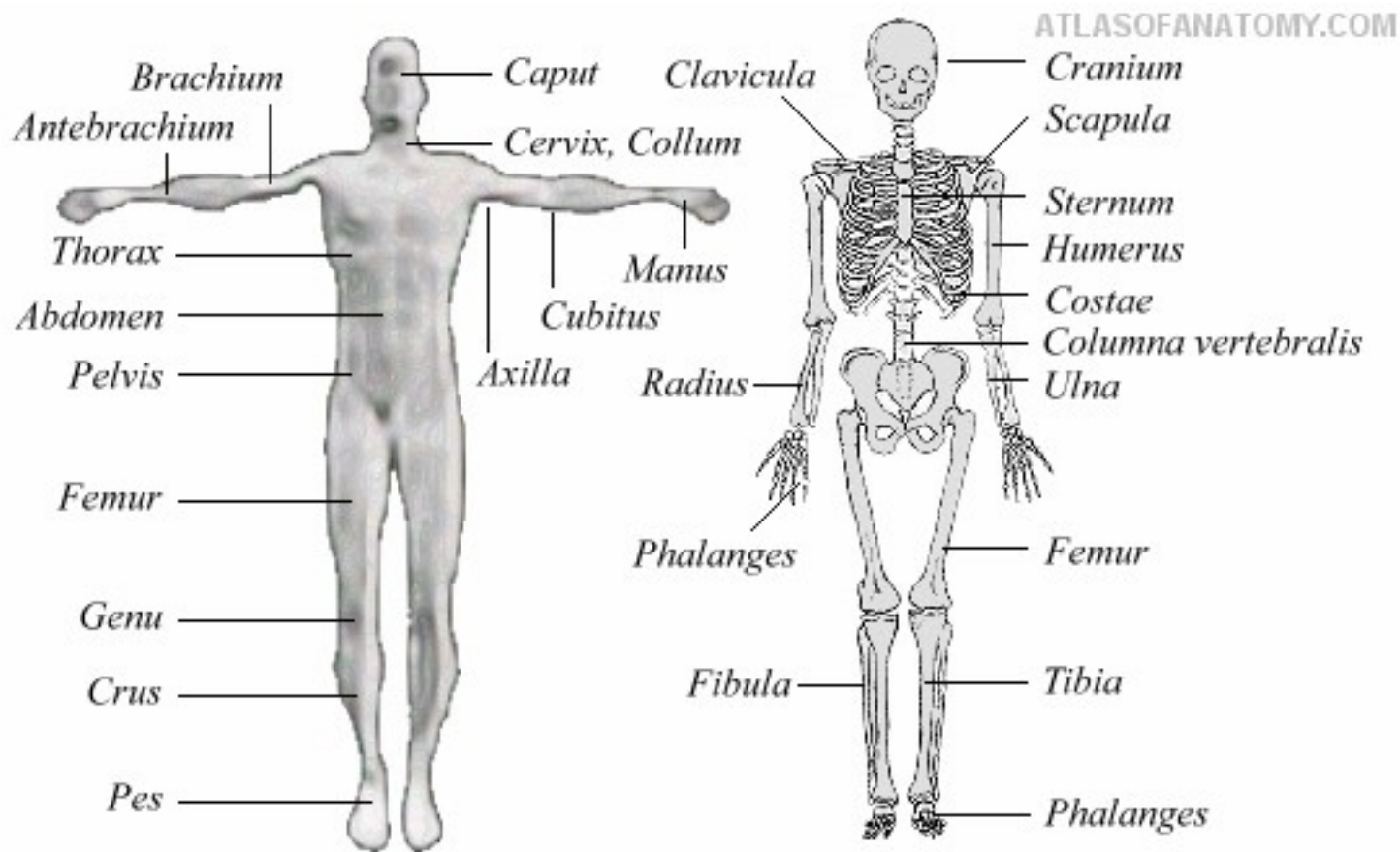
probíhá  
mediálně/laterálně

probíhá  
superior/inferior

# Směry:





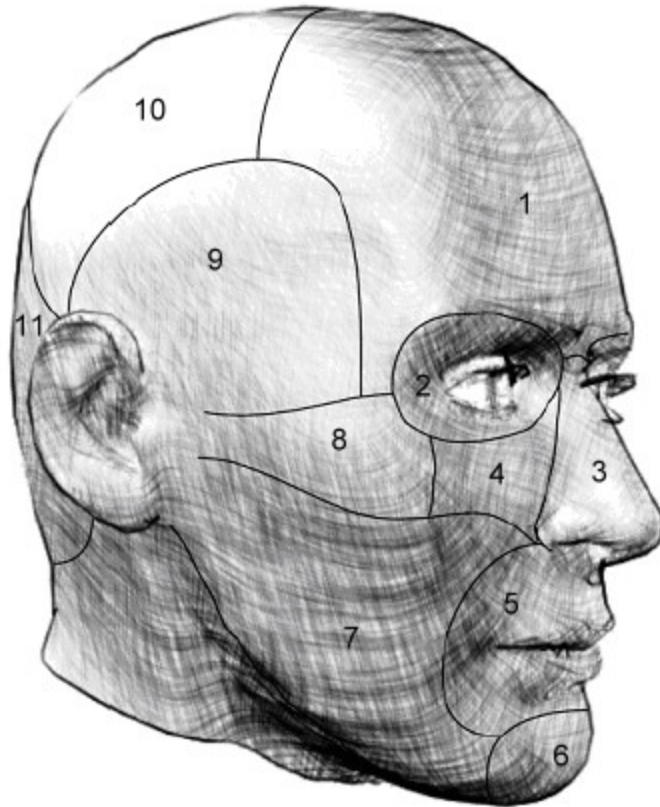


# Krajiny tělní: regiones capitis

ATLASOFANATOMY.COM

## Regiones capitis

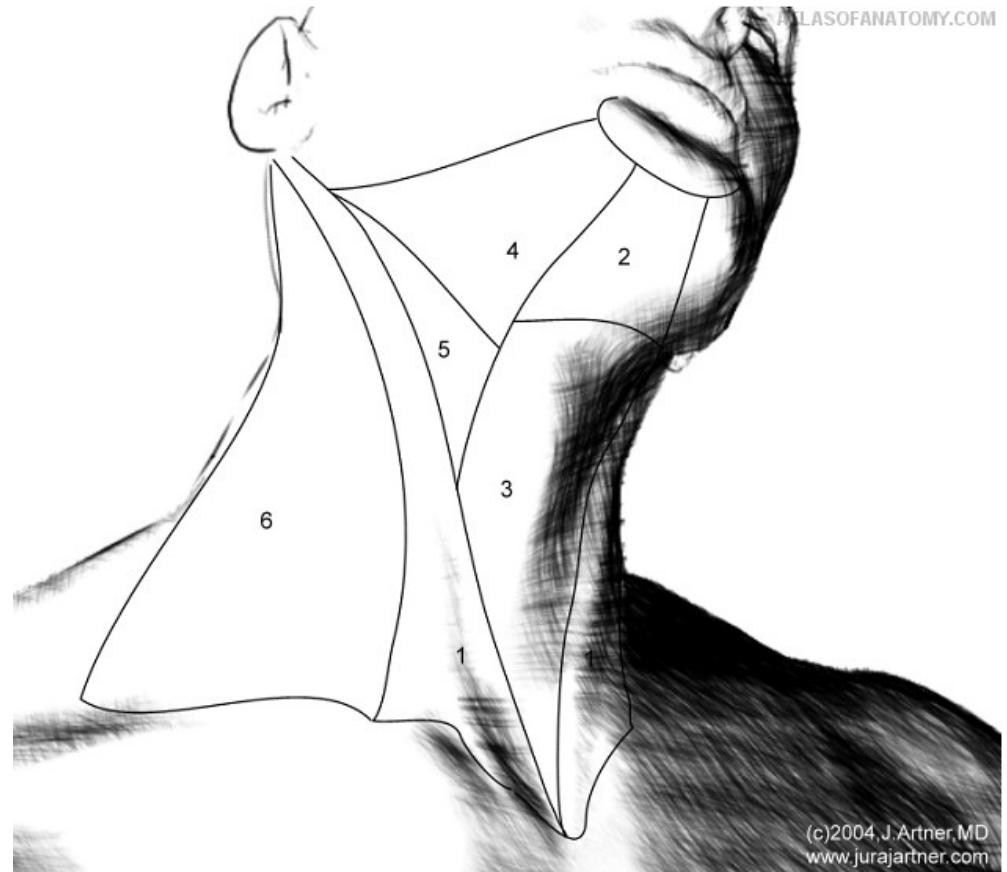
Reg. frontalis (1),  
Reg. orbitalis (2),  
Reg. nasalis (3),  
Reg. infraorbitalis (4),  
Reg. oralis (5),  
Reg. mentalis (6),  
Reg. buccalis (7),  
Reg. zygomatica (8),  
Reg. temporalis (9),  
Reg. parietalis (10),  
Reg. occipitalis (11)



(c)2004, J. Artner, MD  
www.jurajartner.com

## Regiones Colli

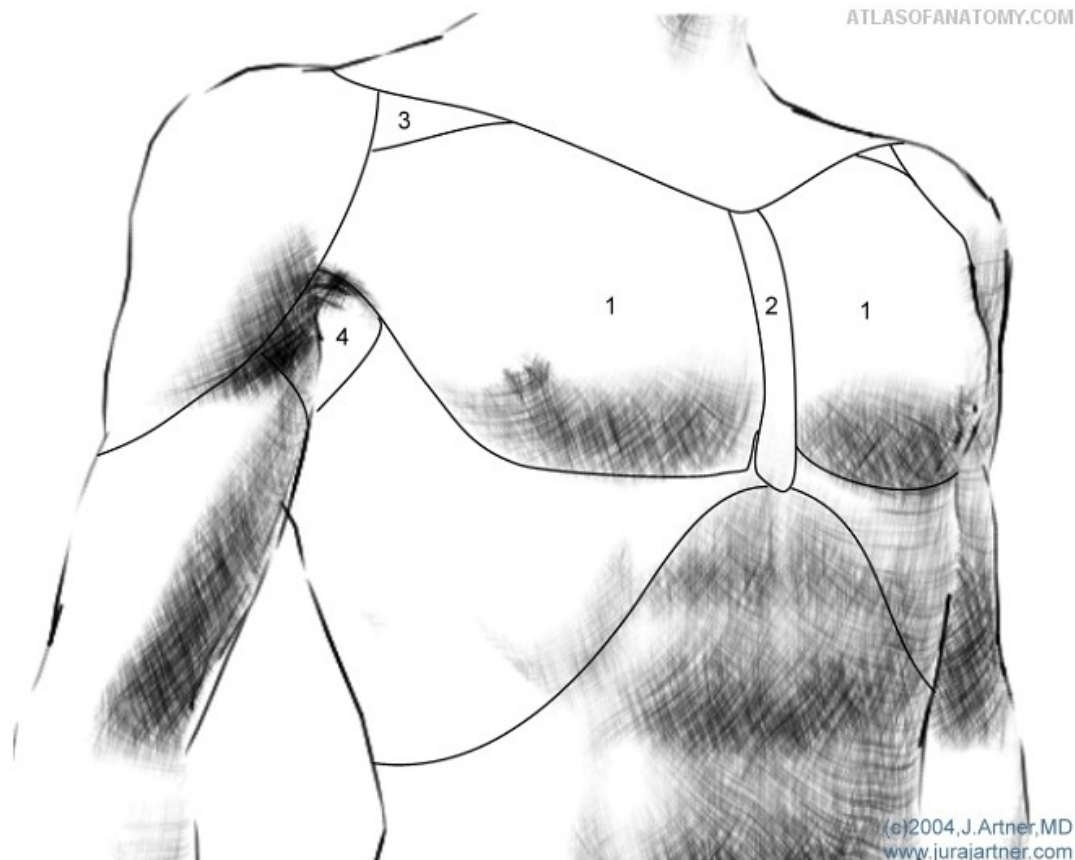
- 1 - Regio sternocleidomastoidea,
- 2 - Trigonum submentale,
- 3 - Trigonum musculare,
- 4 - Trigonum submandibulare,
- 5 - Trigonum caroticum,
- 6 - Regio cervicalis lateralis.





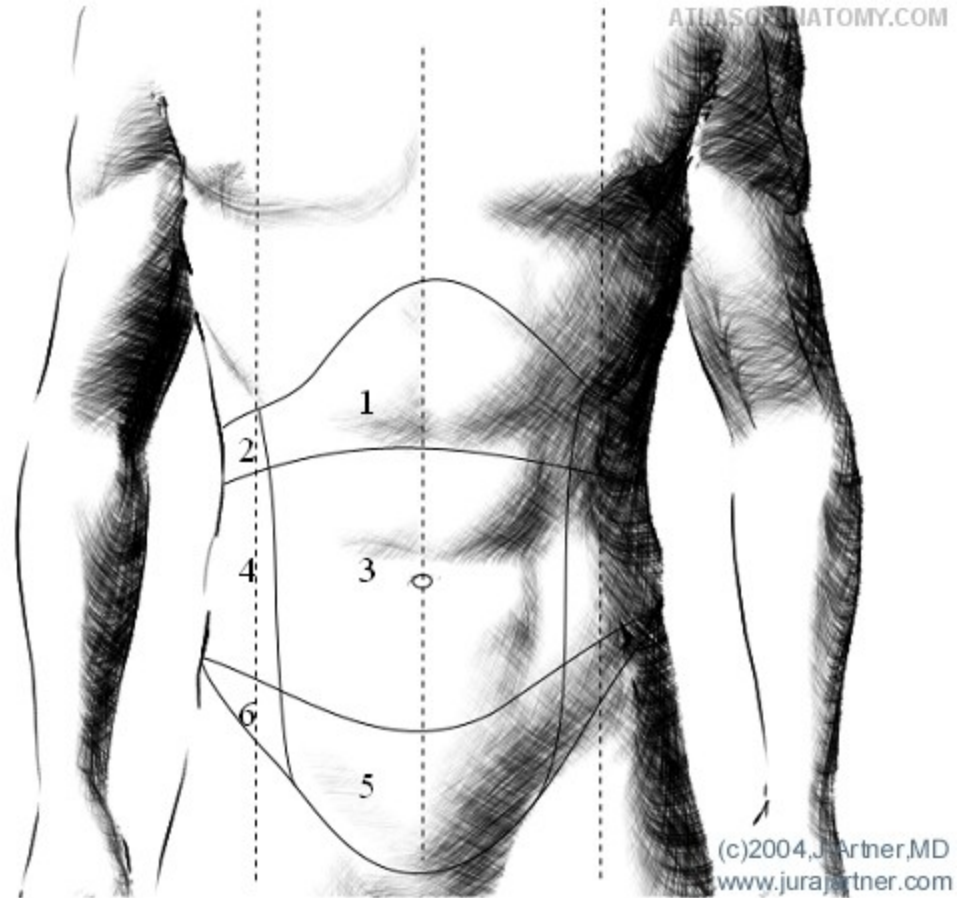
## Regiones Pectorales

- 1 - Regio pectoralis,
- 2 - Regio praesternalis,
- 3 - Trigonum clavipectorale,
- 4 - Regio axillaris.

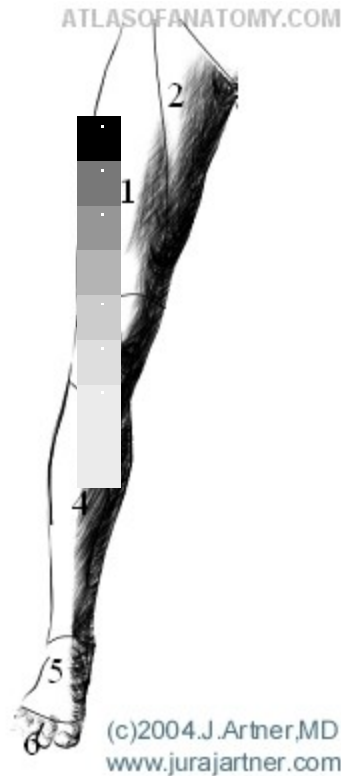


## Regiones abdominales

- 1 - Regio epigastrica,
- 2 - Regio hypochondriaca,
- 3 - Regio umbilicalis,
- 4 - Regio lateralis,
- 5 - Regio pubica,
- 6 - Regio inguinalis.

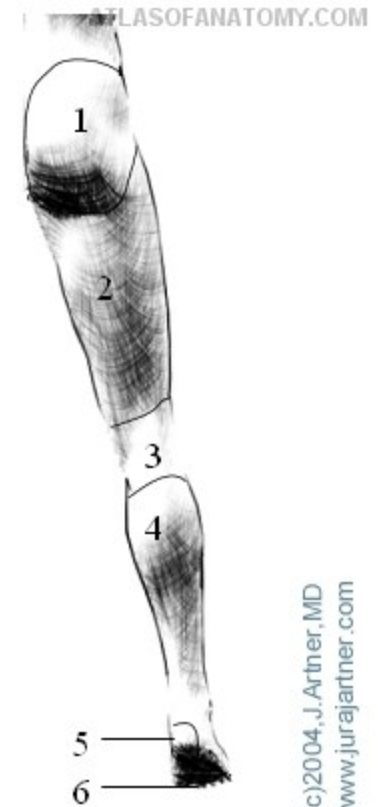


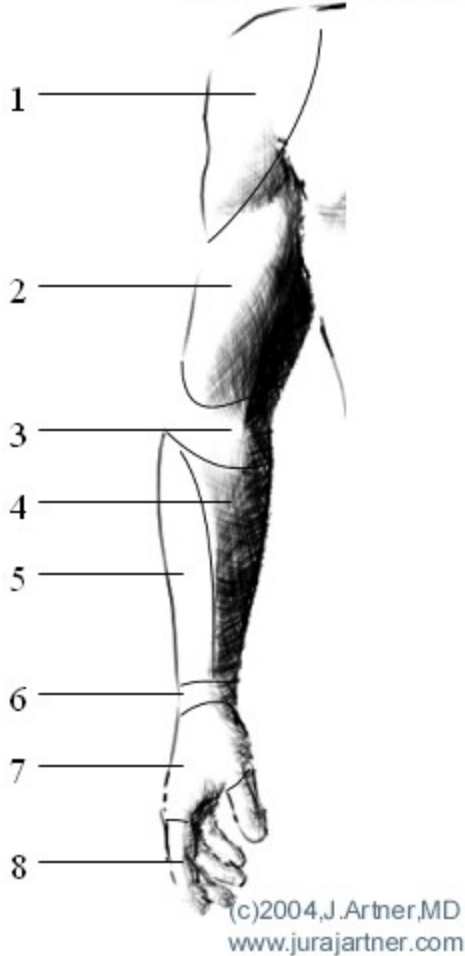
- **Regiones membri inferioris (Aspectus anterior)**
  - 1 - Regio femoralis anterior,
  - 2 - Trigonum femorale,
  - 3 - Regio genus anterior,
  - 4 - Regio cruralis anterior,
  - 5 - Dorsum pedis,
  - 6 - Digiti.



**Regiones membri inferioris (Aspectus posterior)**

- 1 - Regio glutealis,
- 2 - Regio femoralis posterior,
- 3 - Regio genus posterior,
- 4 - Regio cruralis posterior= Reg. suralis,
- 5 - Regio calcanea,
- 6 - Planta pedis.





- **Regiones membri superioris**
  - 1 - Regio deltoidea,
  - 2 - Regio brachialis anterior,
  - 3 - Regio cubitalis anterior,
  - 4 - Regio antebrachialis anterior,
  - 5 - Regio antebrachialis posterior,
  - 6 - Regio carpalis anterior et posterior,
  - 7 - Dorsum manus,
  - 8 - Digiti, in this illustration pointing at *Digitus secundus*= Index