

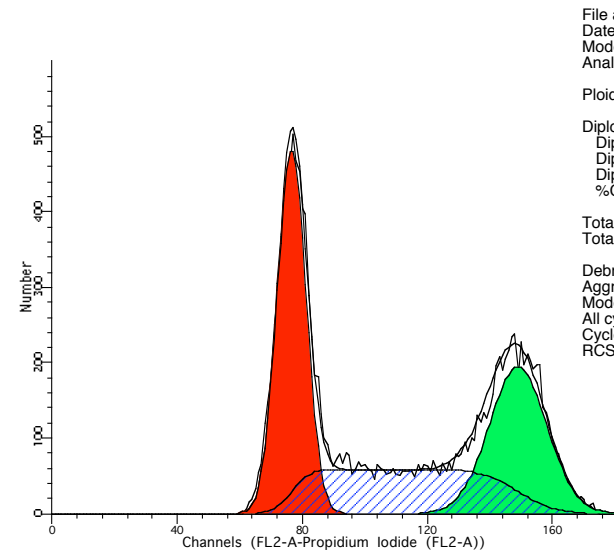
File analyzed: ctrl JB
 Date analyzed: 22-Jan-1970
 Model: 1DA0n_DSf
 Analysis type: Manual analysis

Ploidy Mode: First cycle is diploid

Diploid: 100.00 %
 Dip G1: 48.67 % at 73.93
 Dip G2: 18.96 % at 143.52
 Dip S: 32.38 % G2/G1: 1.94
 %CV: 6.50

Total S-Phase: 32.38 %
 Total B.A.D.: 0.00 %

Debris: 0.04 %
 Aggregates: 0.00 %
 Modeled events: 13692
 All cycle events: 13687
 Cycle events per channel: 194
 RCS: 1.185



File analyzed: CKI JB
 Date analyzed: 22-Jan-1970
 Model: 1DA0n_DSf
 Analysis type: Manual analysis

Ploidy Mode: First cycle is diploid

Diploid: 100.00 %
 Dip G1: 39.11 % at 76.55
 Dip G2: 31.41 % at 148.99
 Dip S: 29.48 % G2/G1: 1.95
 %CV: 6.00

Total S-Phase: 29.48 %
 Total B.A.D.: 0.00 %

Debris: 0.00 %
 Aggregates: 0.00 %
 Modeled events: 14240
 All cycle events: 14240
 Cycle events per channel: 194
 RCS: 1.380

