

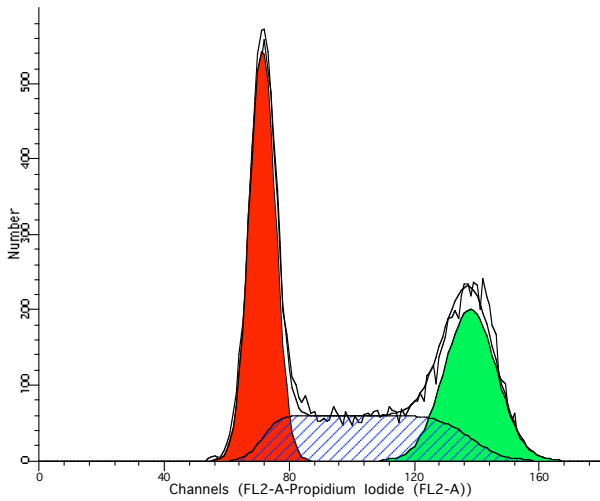
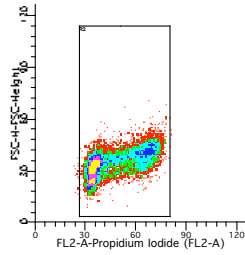
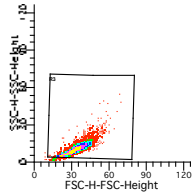
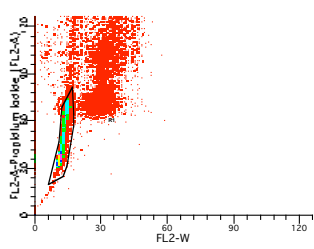
File analyzed: JV_K
 Date analyzed: 17-Jan-1970
 Model: 1DA0n_DSf
 Analysis type: Manual analysis

Ploidy Mode: First cycle is diploid

Diploid: 100.00 %
 Dip G1: 50.58 % at 69.66
 Dip G2: 18.01 % at 134.97
 Dip S: 31.42 % G2/G1: 1.94
 %CV: 6.40

Total S-Phase: 31.42 %
 Total B.A.D.: 0.00 %

Debris: 0.03 %
 Aggregates: 0.00 %
 Modeled events: 13769
 All cycle events: 13764
 Cycle events per channel: 208
 RCS: 1.148



File analyzed: JV_IN
 Date analyzed: 17-Jan-1970
 Model: 1DA0n_DSf
 Analysis type: Manual analysis

Ploidy Mode: First cycle is diploid

Diploid: 100.00 %
 Dip G1: 41.09 % at 71.35
 Dip G2: 30.17 % at 137.91
 Dip S: 28.74 % G2/G1: 1.93
 %CV: 5.80

Total S-Phase: 28.74 %
 Total B.A.D.: 0.00 %

Debris: 0.08 %
 Aggregates: 0.00 %
 Modeled events: 13807
 All cycle events: 13795
 Cycle events per channel: 204
 RCS: 1.373

