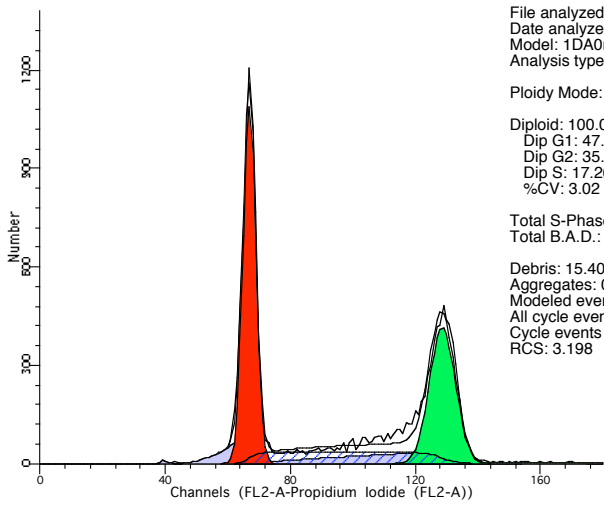


File analyzed: CC_K_KN
 Date analyzed: 16-Jan-1970
 Model: 1DA0n_DSF
 Analysis type: Manual analysis
 Ploidy Mode: First cycle is diploid
 Diploid: 100.00 %
 Dip G1: 42.51 % at 62.91
 Dip G2: 19.69 % at 122.10
 Dip S: 37.81 % G2/G1: 1.94
 %CV: 3.08
 Total S-Phase: 37.81 %
 Total B.A.D.: 0.03 %
 Debris: 0.16 %
 Aggregates: 0.40 %
 Modeled events: 13867
 All cycle events: 13790
 Cycle events per channel: 229
 RCS: 2.882



File analyzed: CC_INH_KN
 Date analyzed: 16-Jan-1970
 Model: 1DA0n_DSF
 Analysis type: Manual analysis
 Ploidy Mode: First cycle is diploid
 Diploid: 100.00 %
 Dip G1: 47.04 % at 66.93
 Dip G2: 35.70 % at 128.64
 Dip S: 17.26 % G2/G1: 1.92
 %CV: 3.02
 Total S-Phase: 17.26 %
 Total B.A.D.: 14.37 %
 Debris: 15.40 %
 Aggregates: 0.93 %
 Modeled events: 14160
 All cycle events: 11846
 Cycle events per channel: 189
 RCS: 3.198