

Arachnological Lab



Úvod do studia systematické biologie

Stano Pekár

Spiders as bioagents

Aims

- winter activity of spiders
- biological control of pests
- intraguild predation



Philodromus



Anyphaena

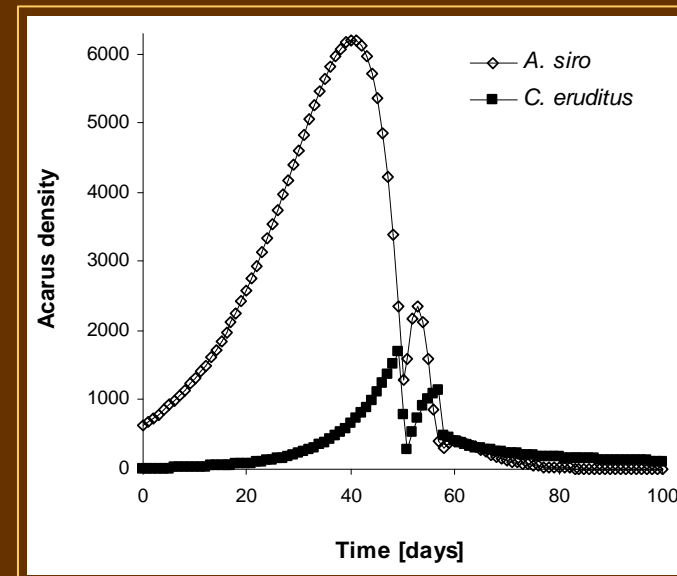
Biological control of stored products

Aims

- predator-prey population model (*Cheyletus-Acarus*)
- use of mite predators to control mite pests



Cheyletus



Trophic behavioural adaptations

Aims

- identification of prey-specificity
- morphological, behavioural and physiological adaptations



Evolution of myrmecomorphic spiders

Aims

- forces driving evolution of inaccurate ant-mimics



Host-manipulation by parasitoids

Aims

- life-history of parasitoids
- host- specificity of parasitoids



Forced copulation

Aims

- identification of forced copulation in arachnids
- evolution of forced copulation





Potential topics

Magnetoreception in spiders

- Is spider behaviour affected by the magnetic field?



Araniella



Drassodes

Predatory behaviour of specialised spiders

- behavioural adaptations
- morphological adaptations



Tmarus

Trophic niche

- identification of prey using molecular methods



Zodarion

Assessment of mimetic accuracy

- image analysis of ant models and spider mimics



Synemosyna