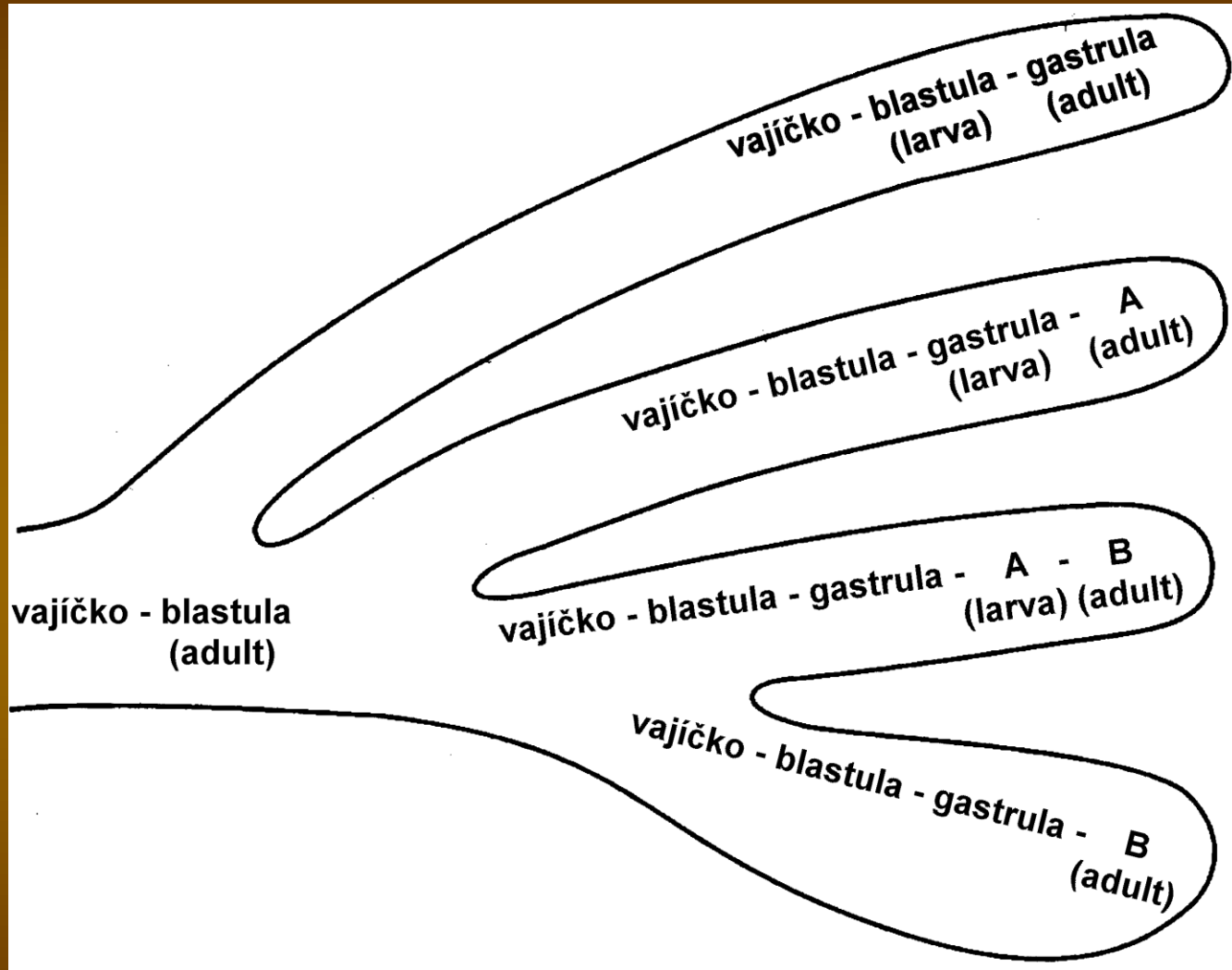


# Vývojová morfologie živočichů

10.

Morfologie larev

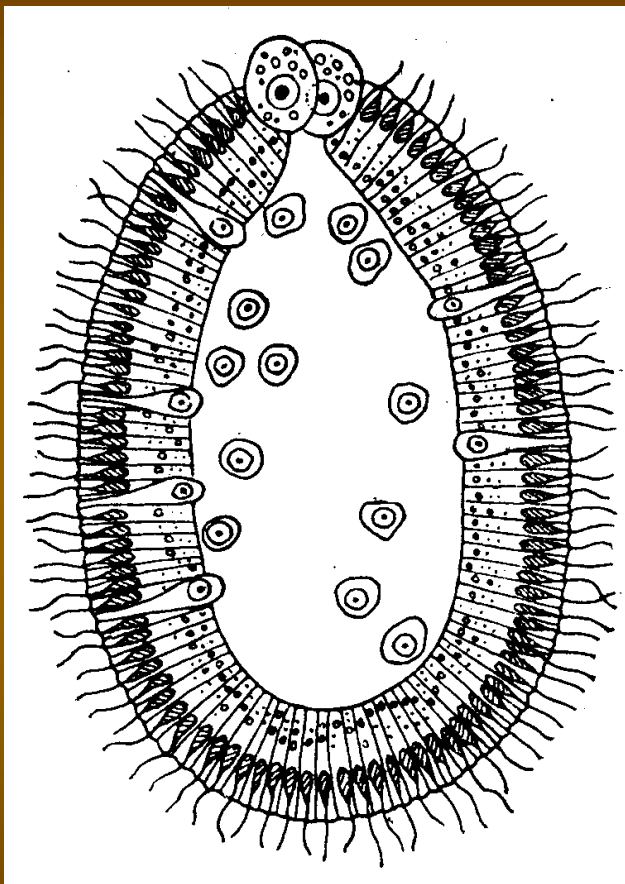
# Morfologie larev



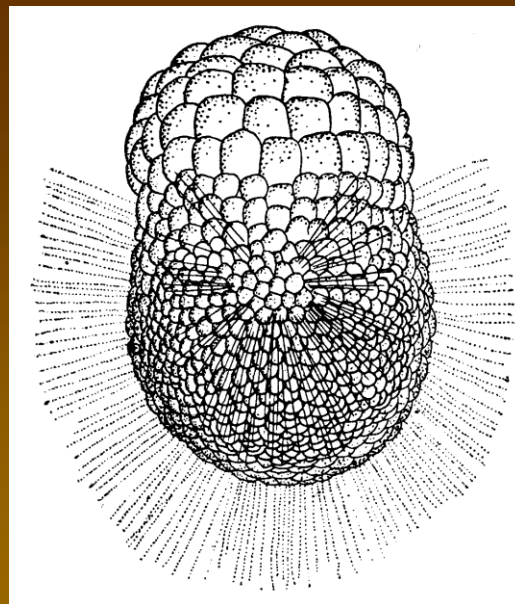
Morfologická diferenciacie ontogenetického vývoje

# Morfologie larev

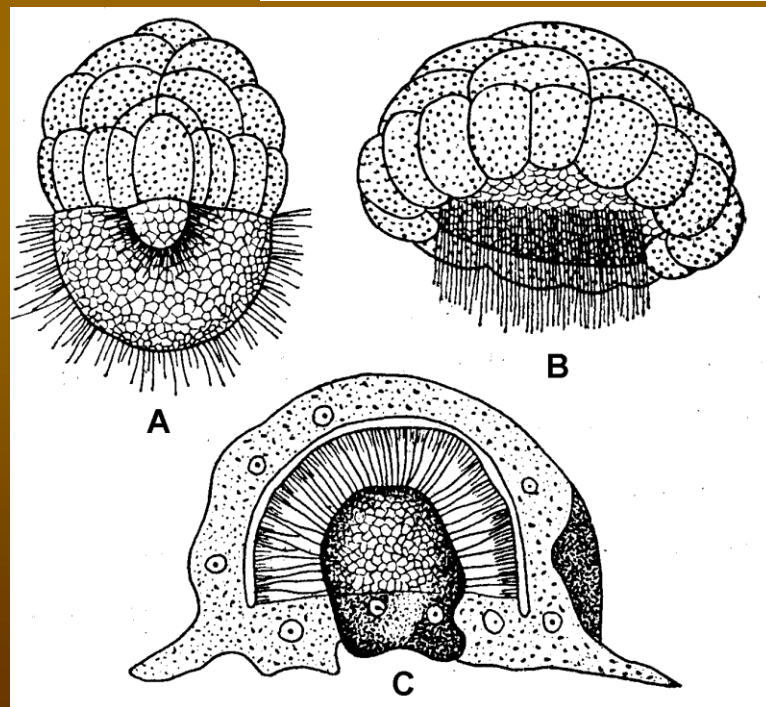
## Živočišné houby - blastula



Coeloblastula (přechod k parenchymule)



Amfiblastula

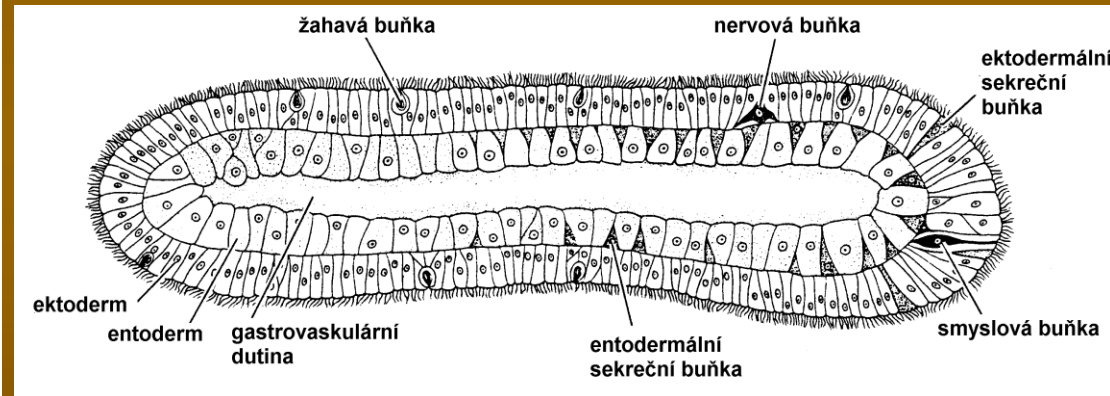
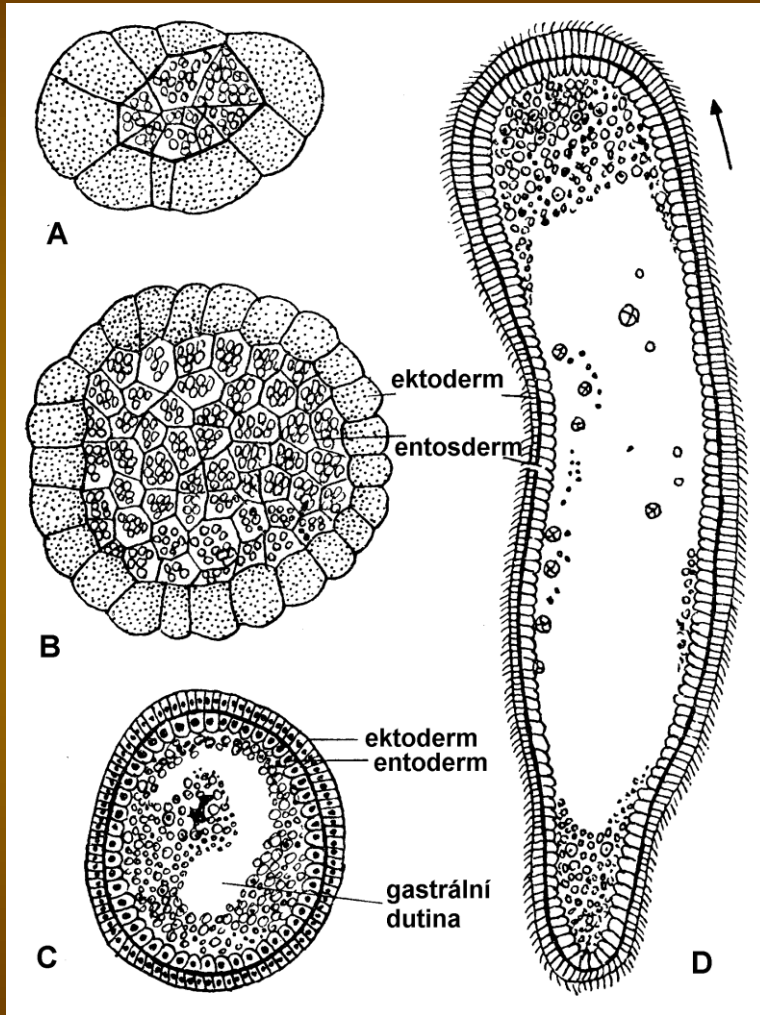


# Morfologie larev

## Žahavci - planula

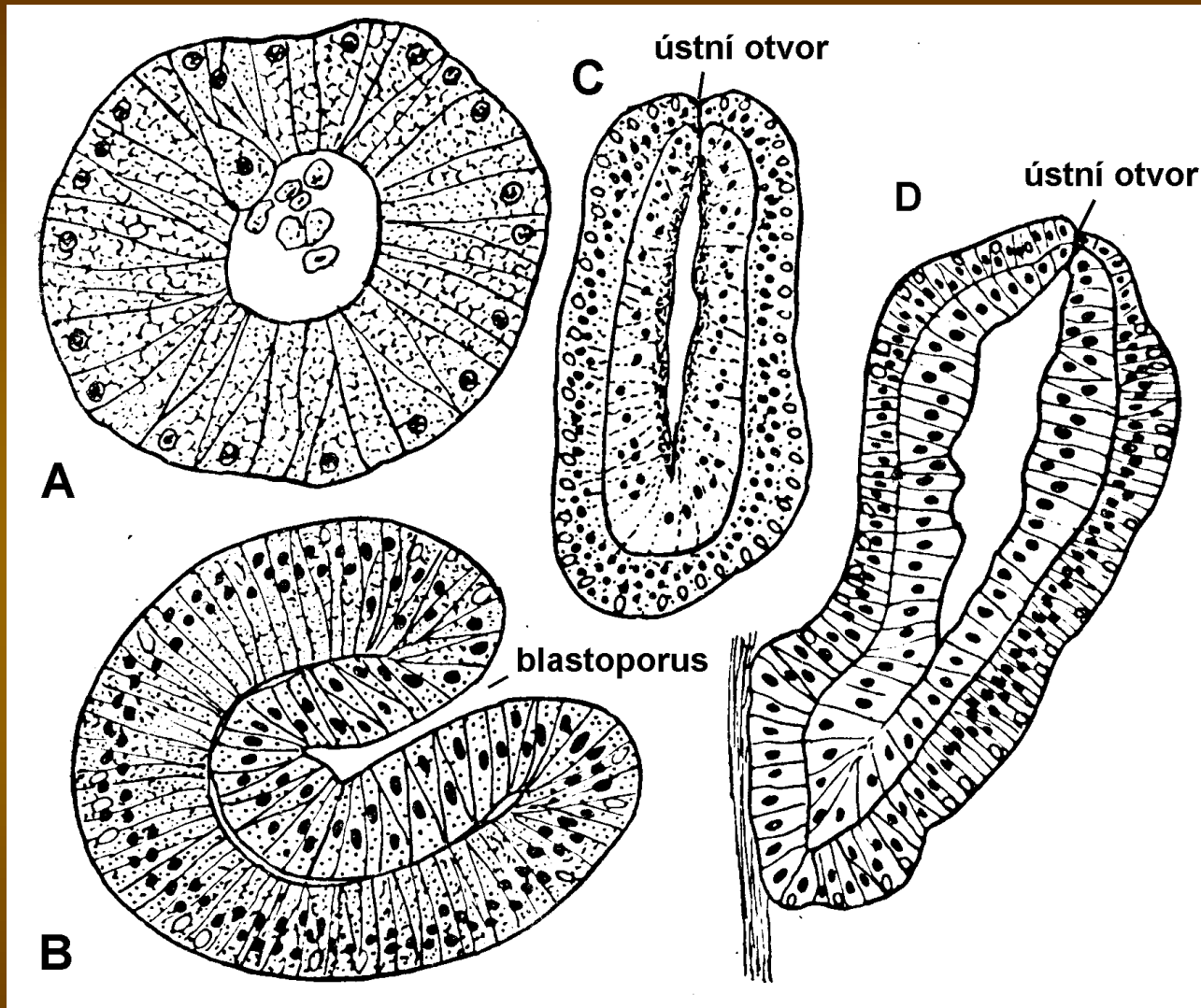
Planula = gastrula

(bez ústního otvoru  
nebo  
s ústním otvorem)



Planula ze stereoblastuly

# Morfologie larev

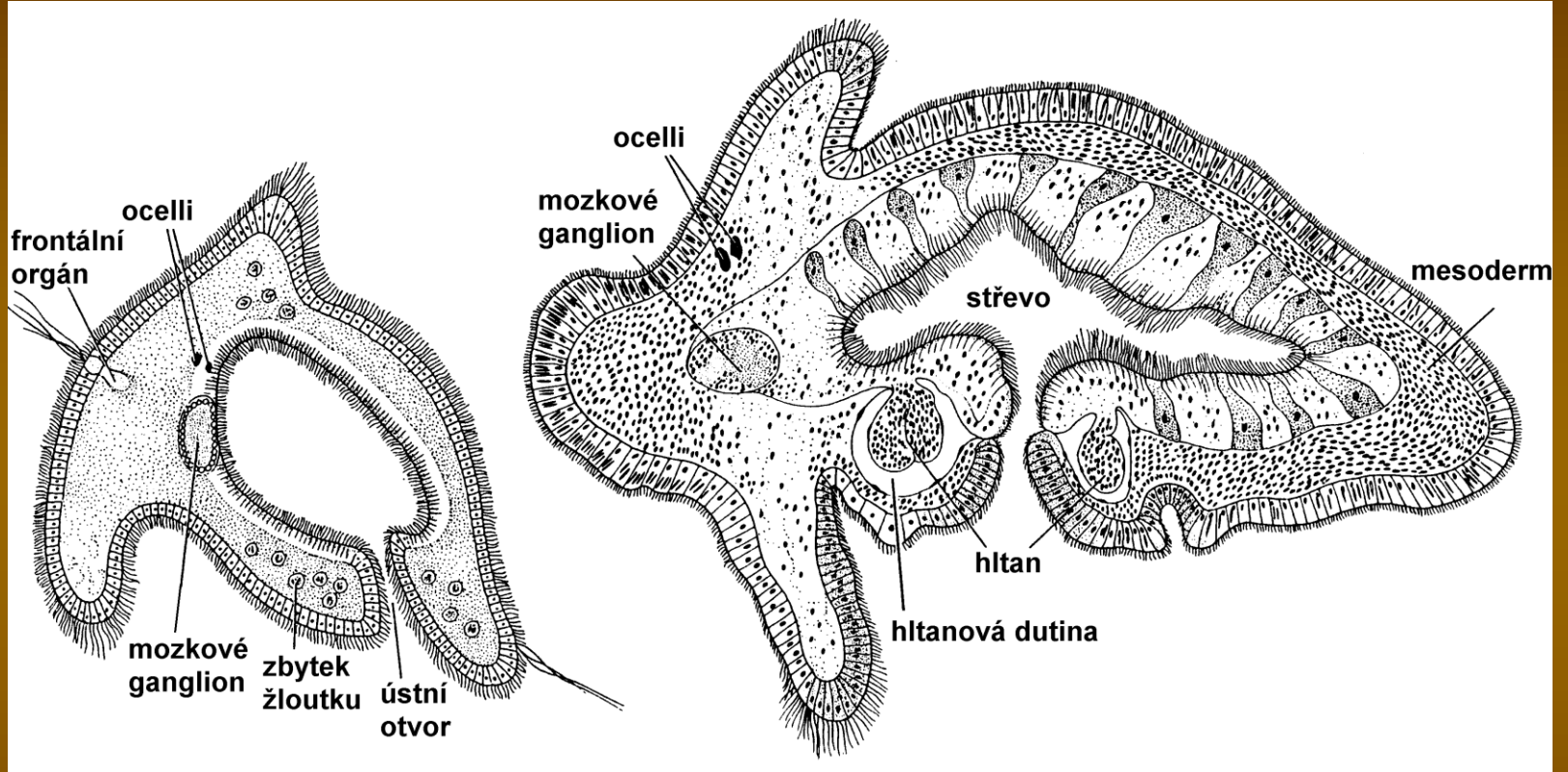


Planula z coeloblastuly

# Morfologie larev

## Ploštěnci - gastrula

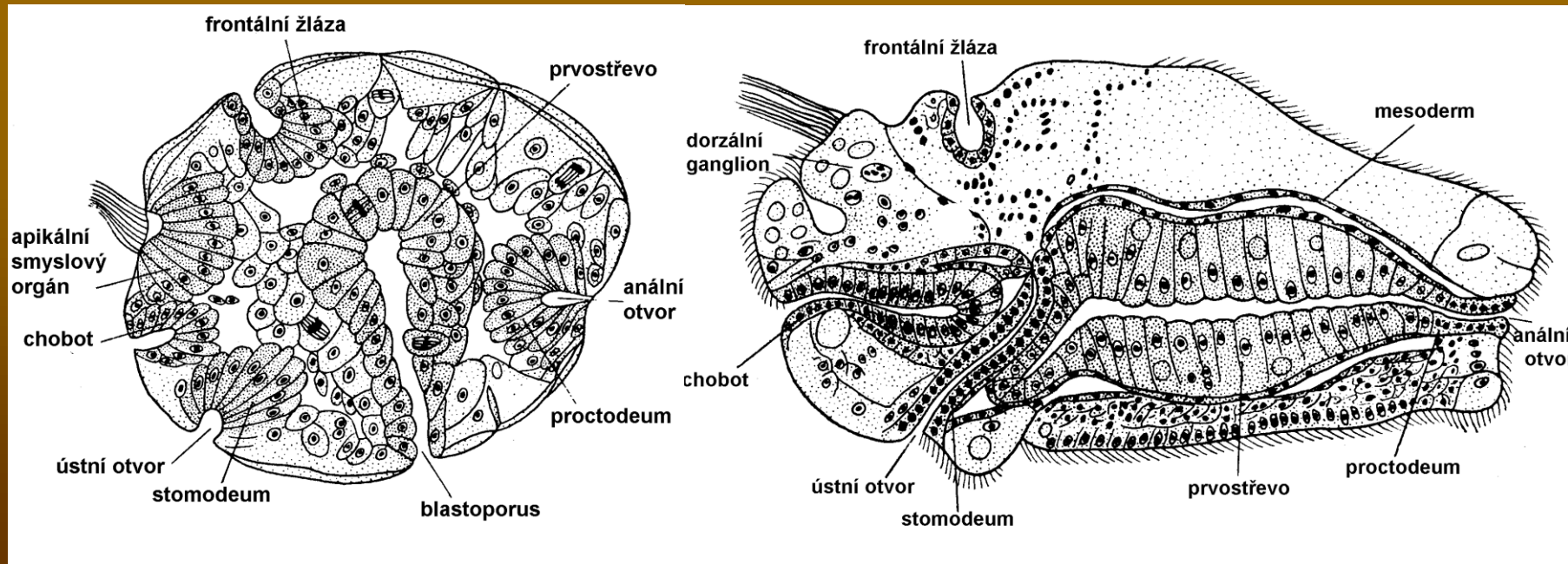
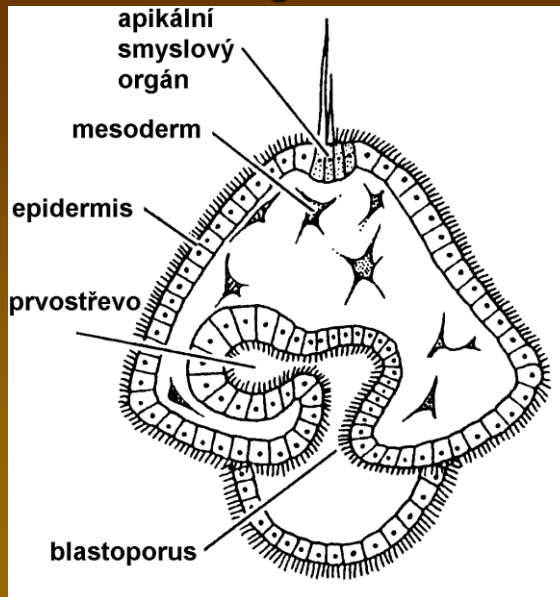
## Müllerova larva



# Pásnice - gastrula

## Morfologie larev

# pilidium

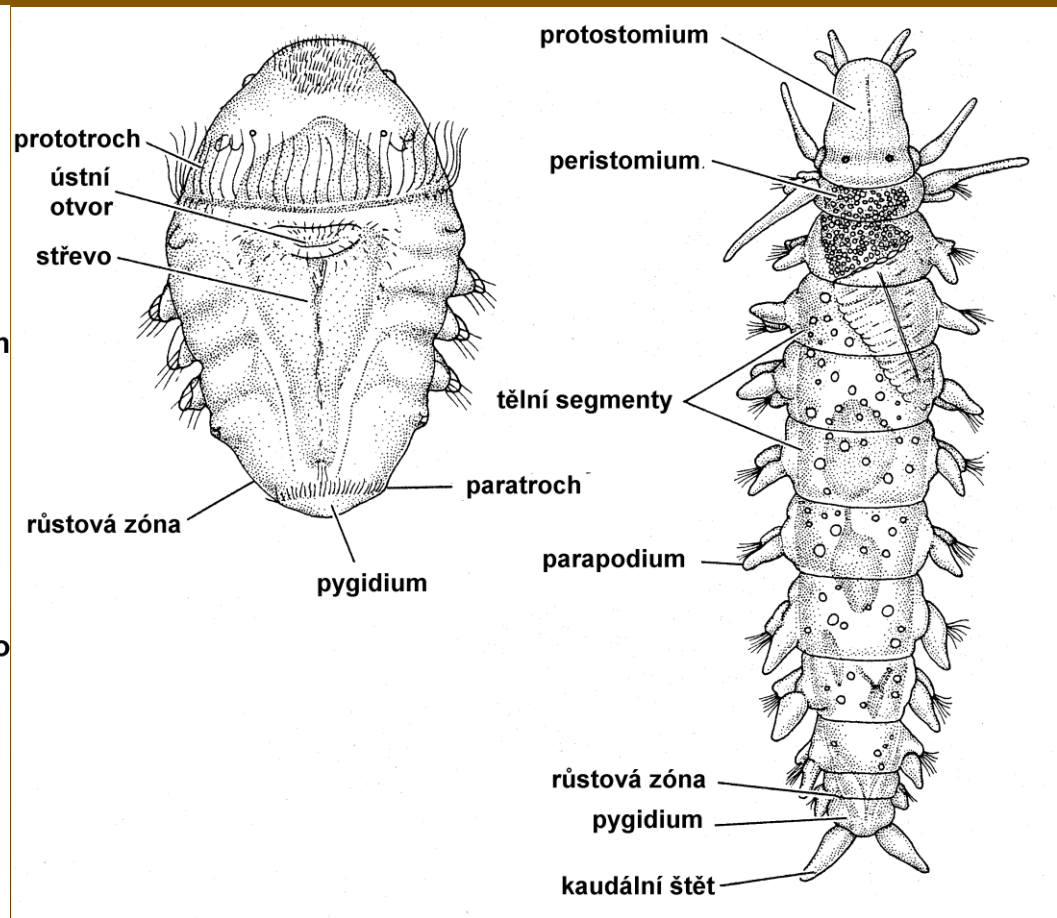
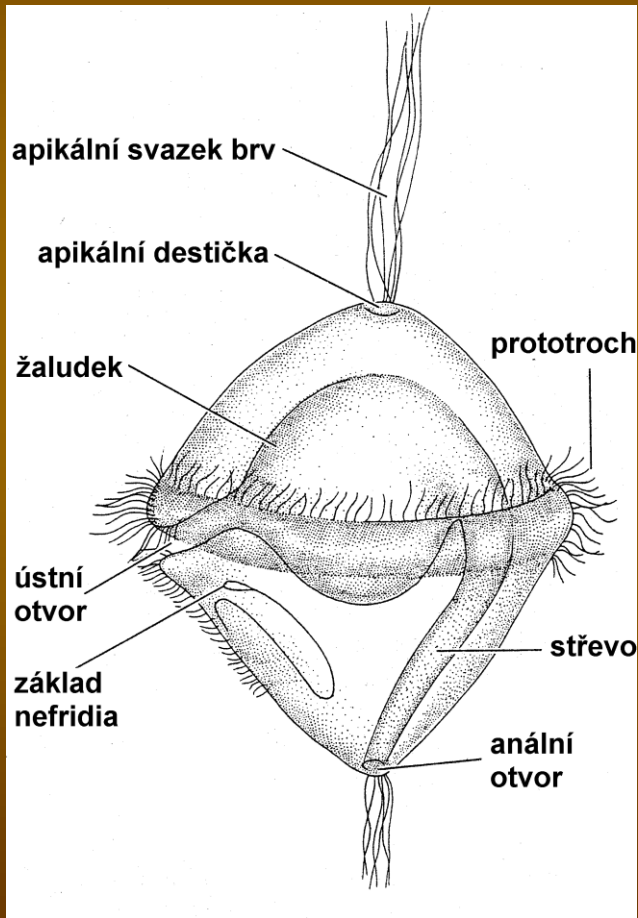


# Morfologie larev

**Kroužkovci – gastrula**  
**Měkkýši**  
**Členovci**

.....

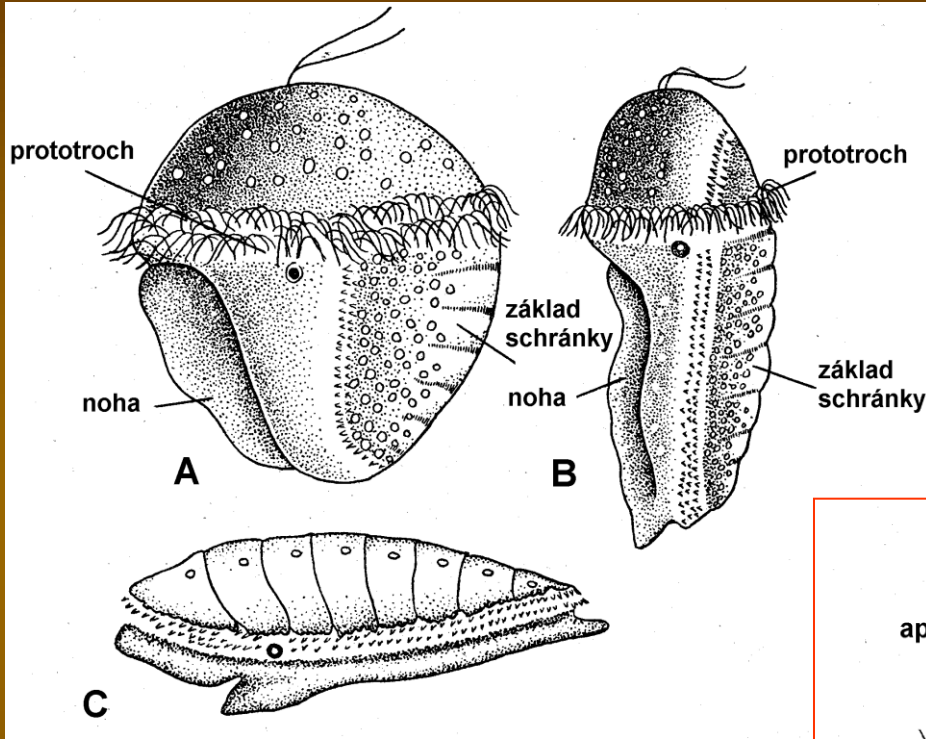
**trochofora**





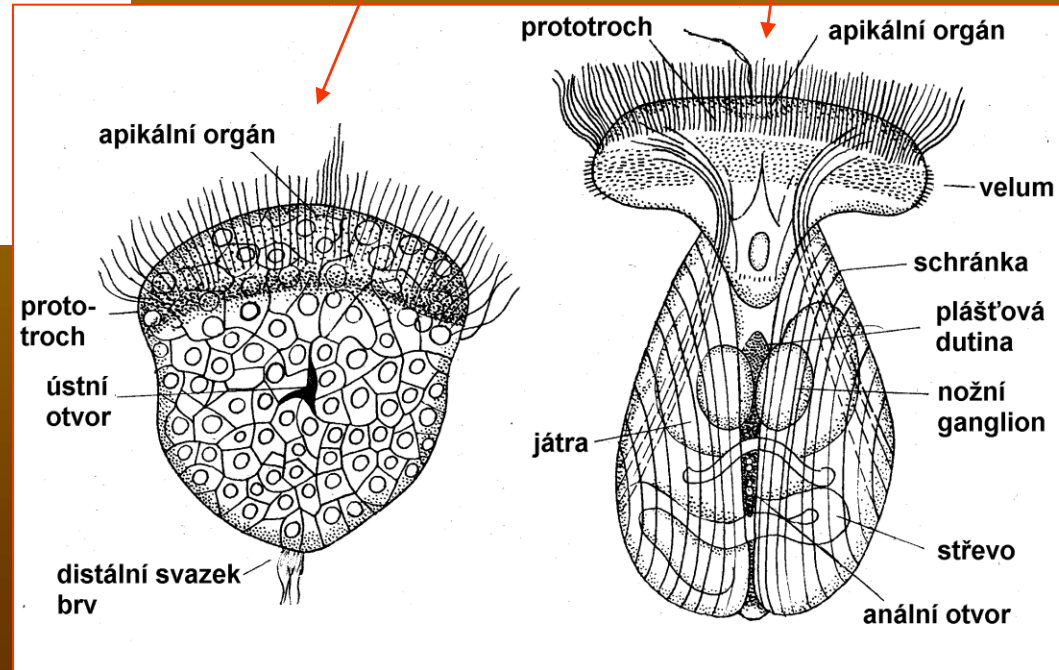
# Morfologie larev

## Měkkýši – gastrula

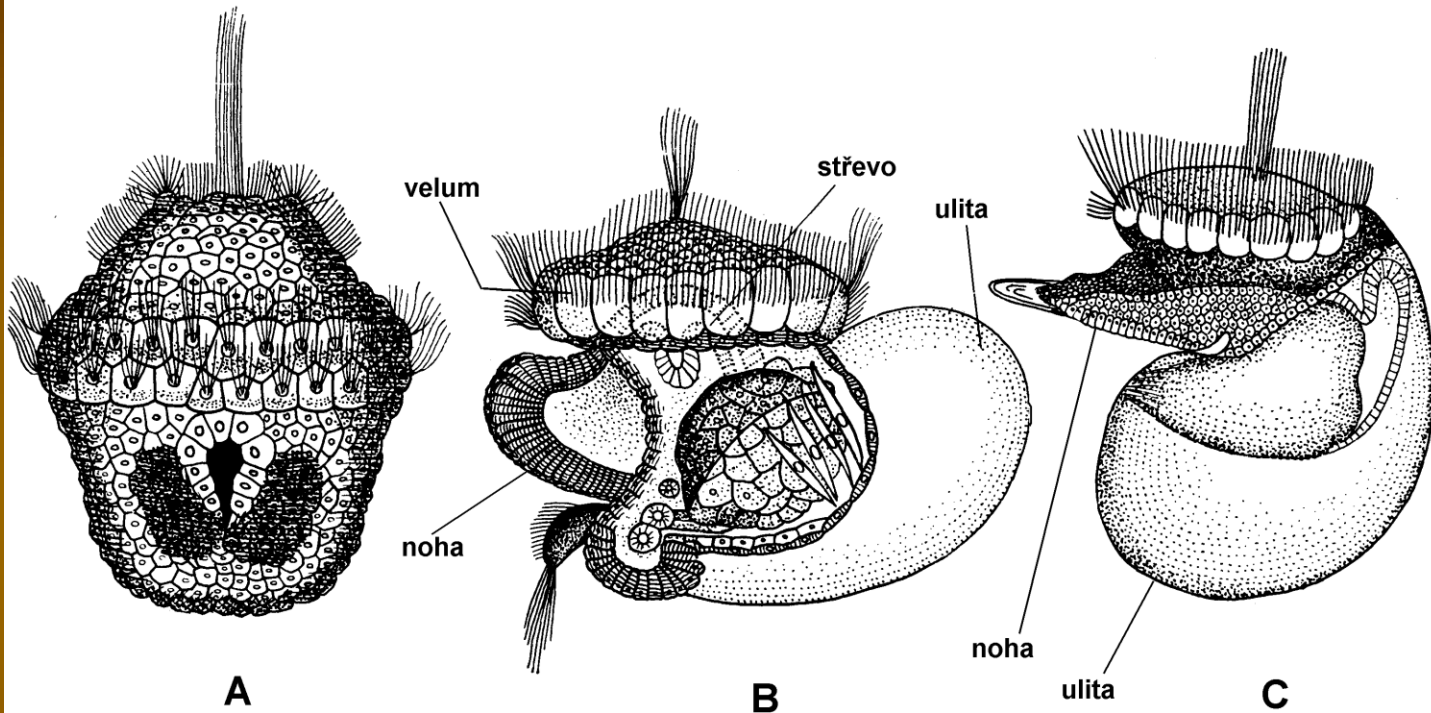


## trochofora - veliger

## trochofora - glochidium



# Morfologie larev



A

B

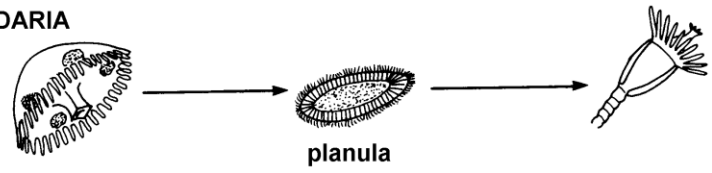
C

trochofora

raný veliger

pokročilý veliger

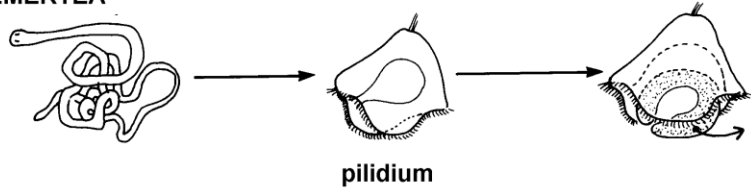
**CNIDARIA**



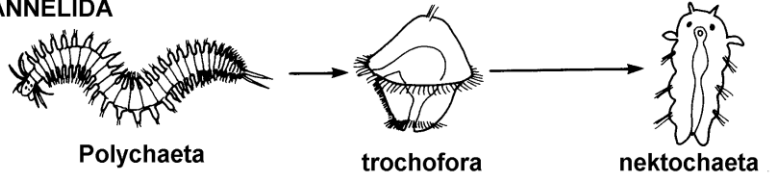
**PLATYHELMINTHES**



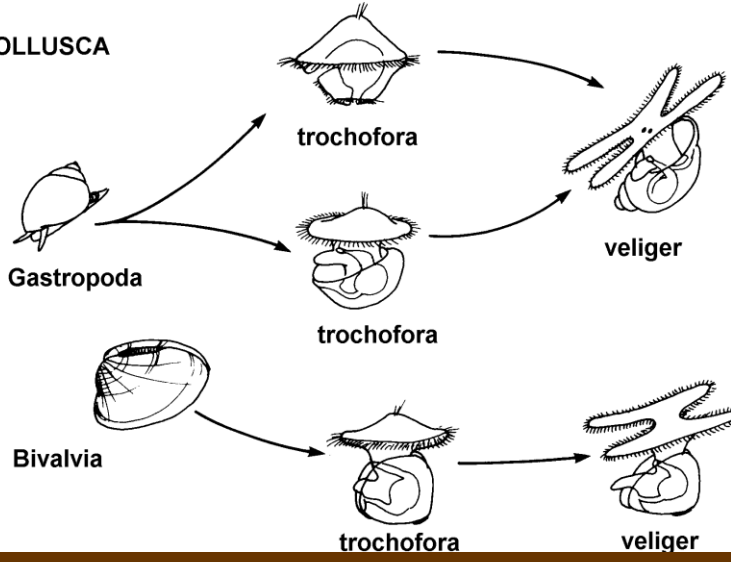
**NEMERTEA**



**ANNELIDA**



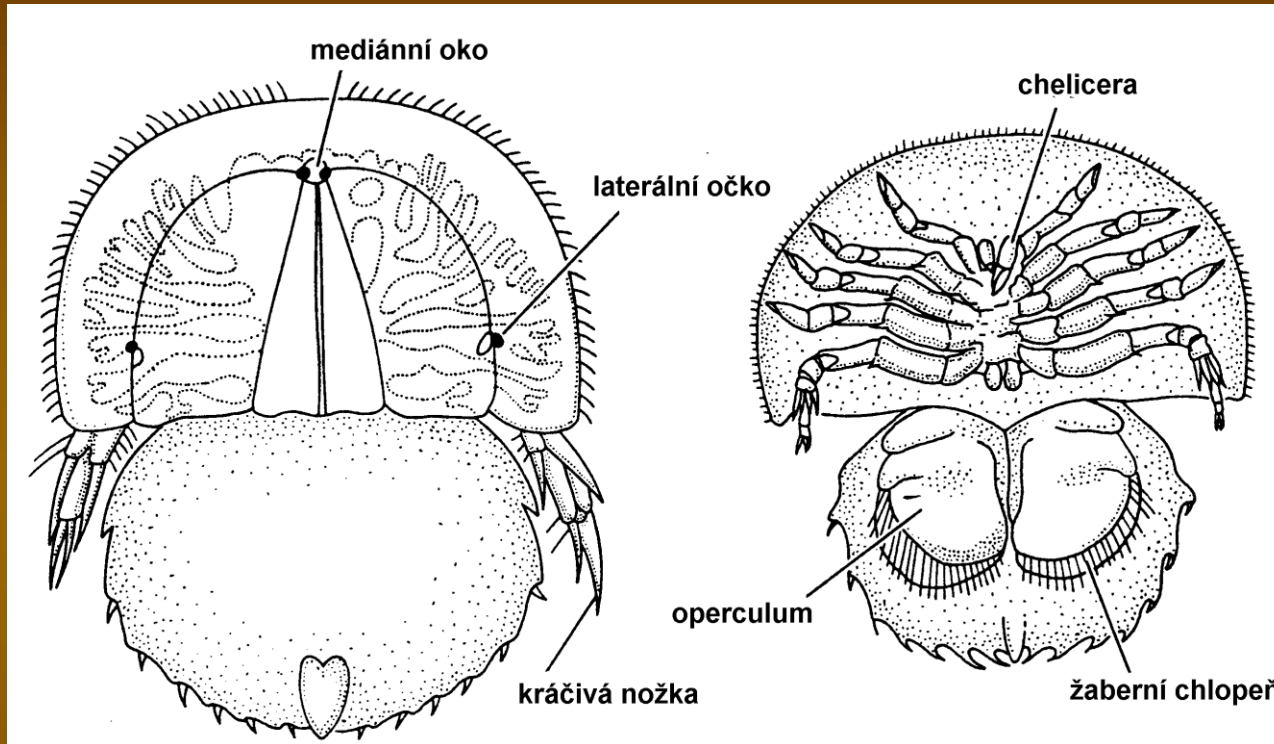
**MOLLUSCA**



Členovci - ostrorepi

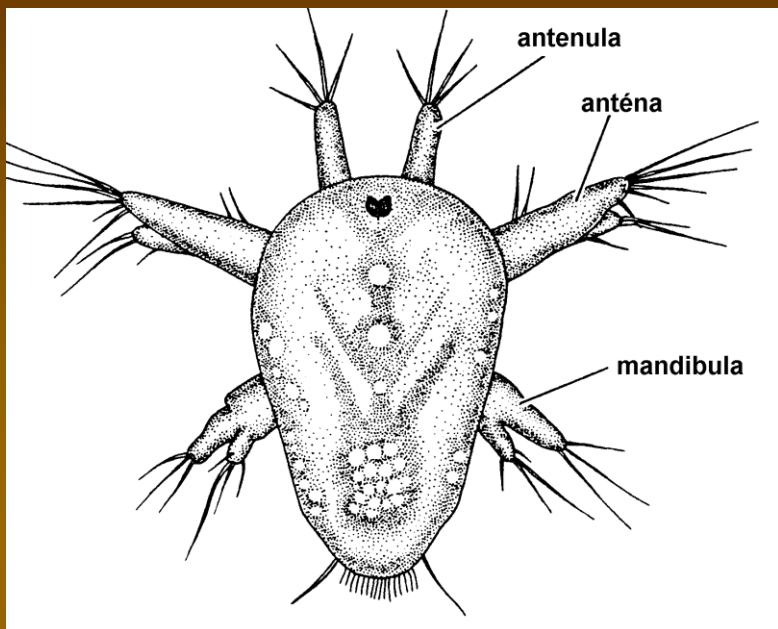
Morfologie larev

~~trochofora - euproöps~~



# Členovci - korýši

## Morfologie larev

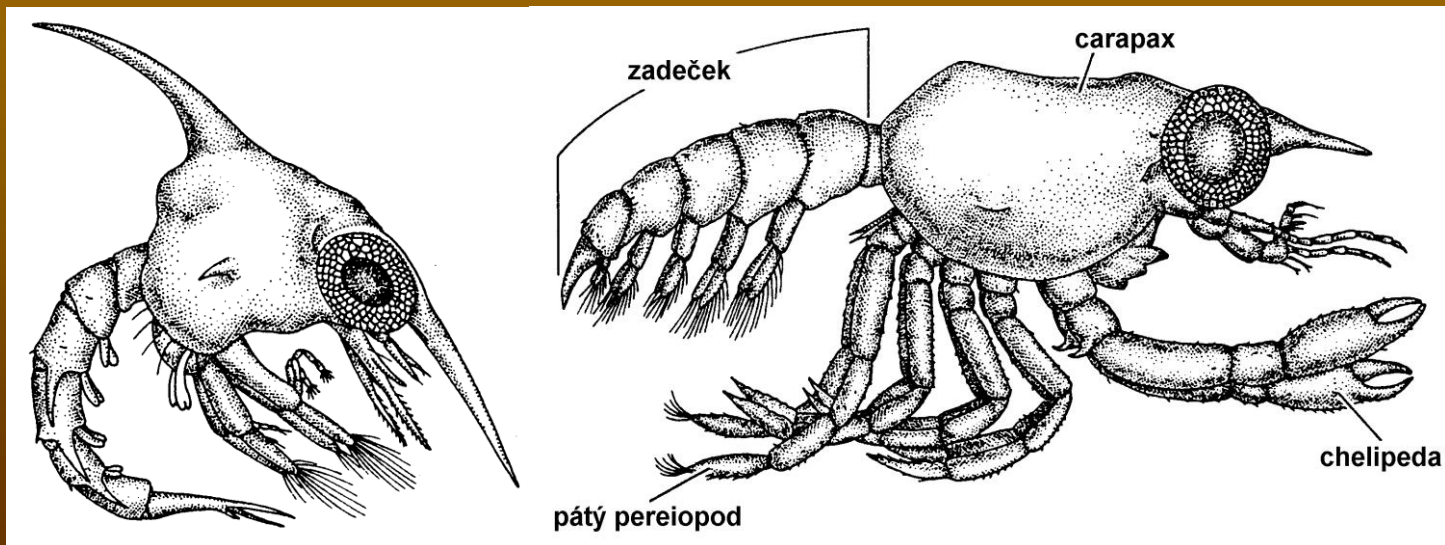


~~trochofora – nauplius~~

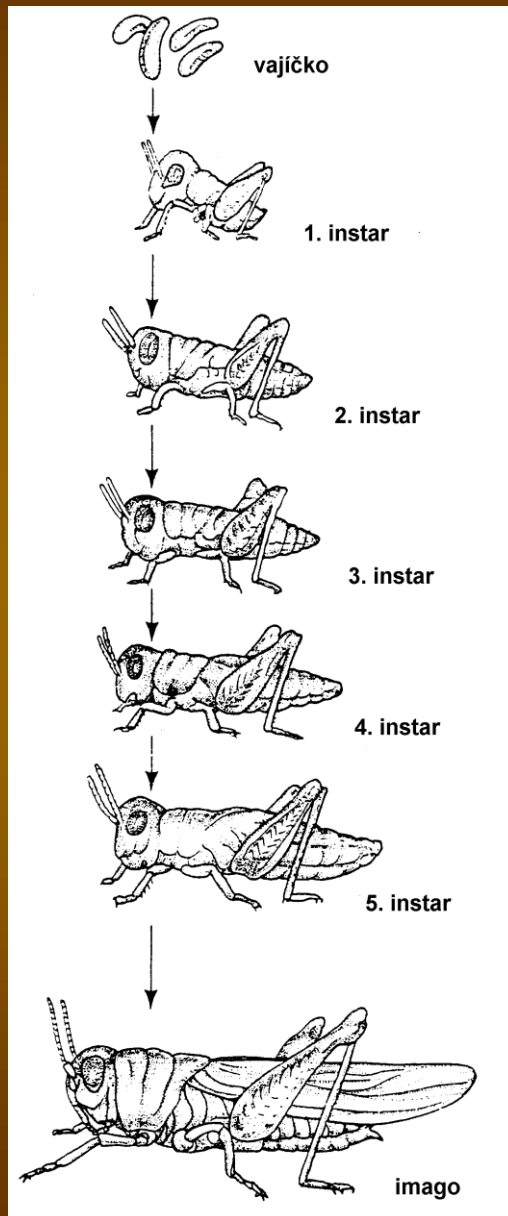
~~trochofora – metanauplius~~

metanauplius – protozoa – zoea

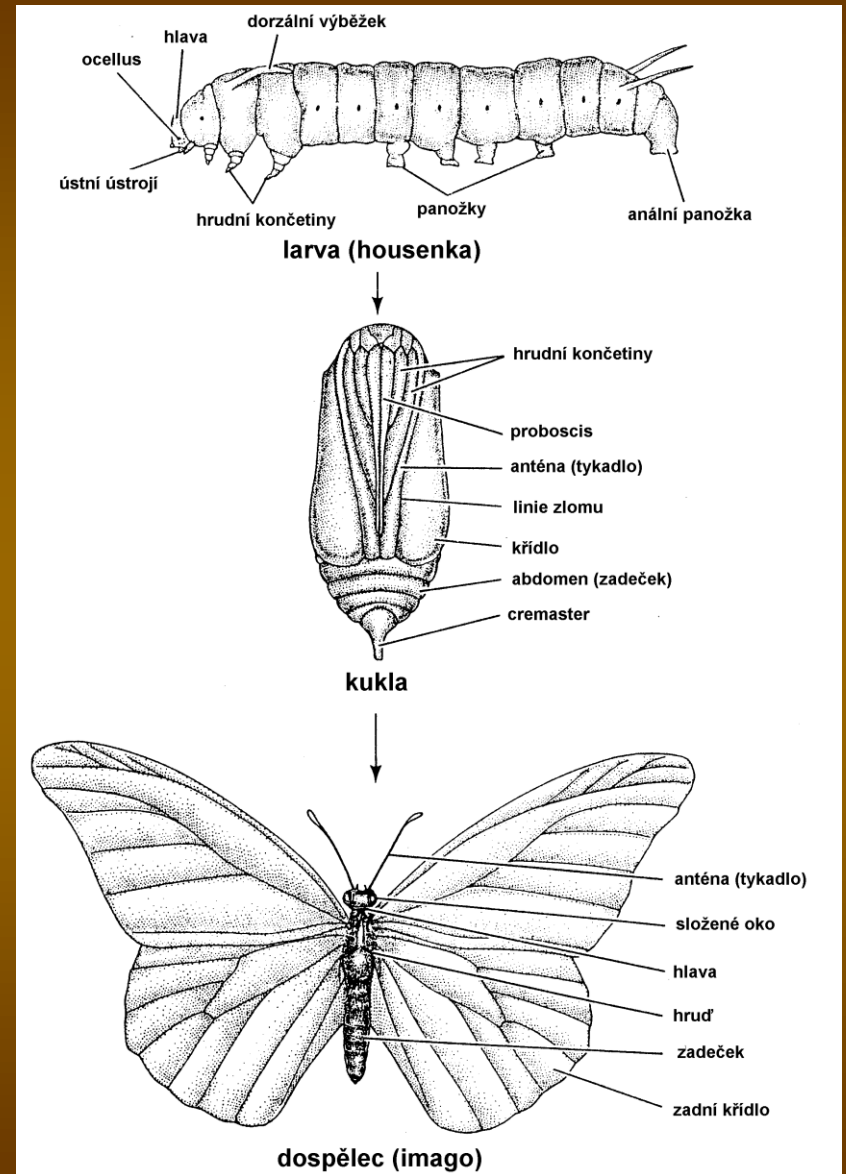
metazoea – megalopa



# Hmyz



# Morfologie larev



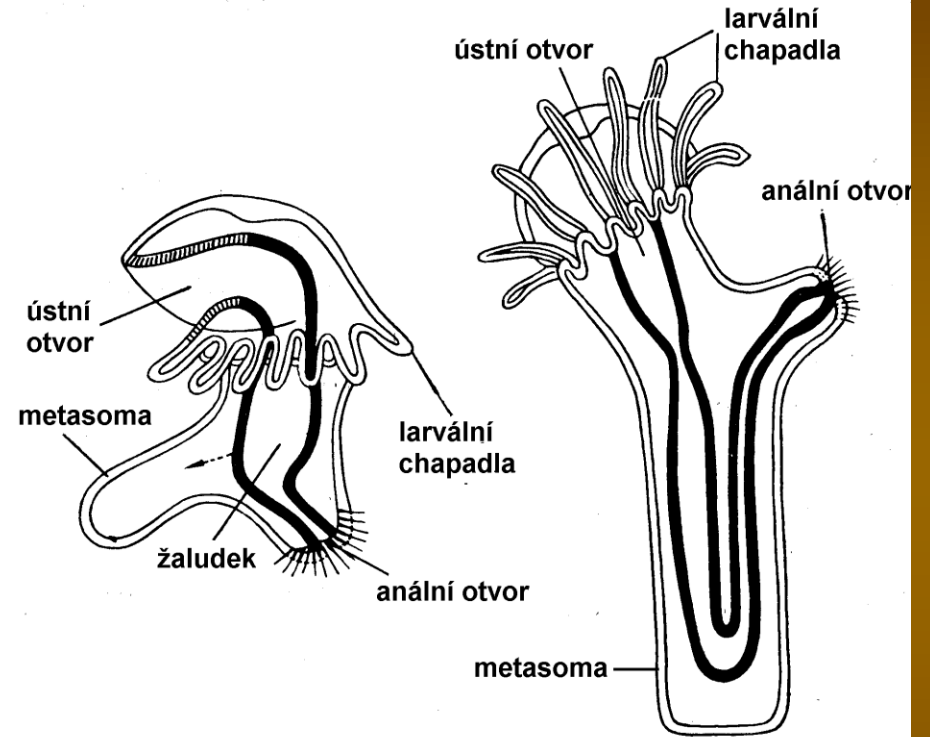
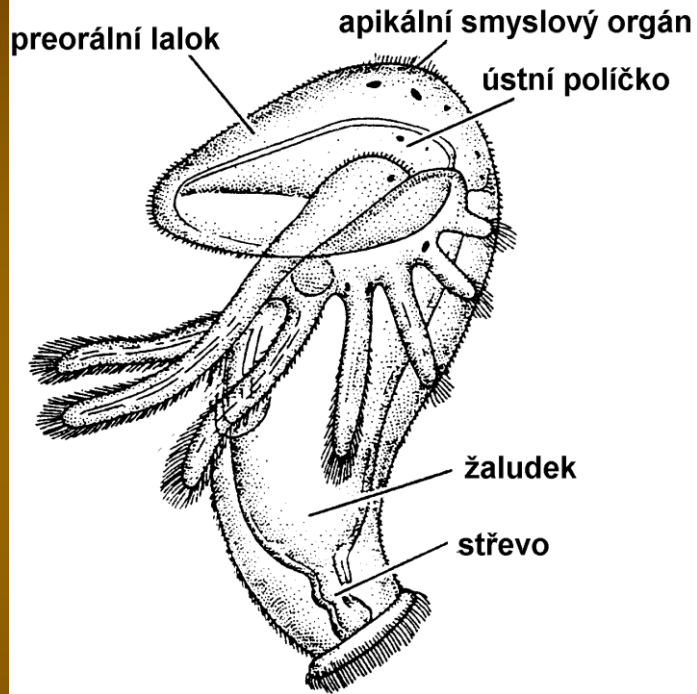
hemimetabolický vývoj

holometabolický vývoj

# Chapadlovky

## Morfologie larev

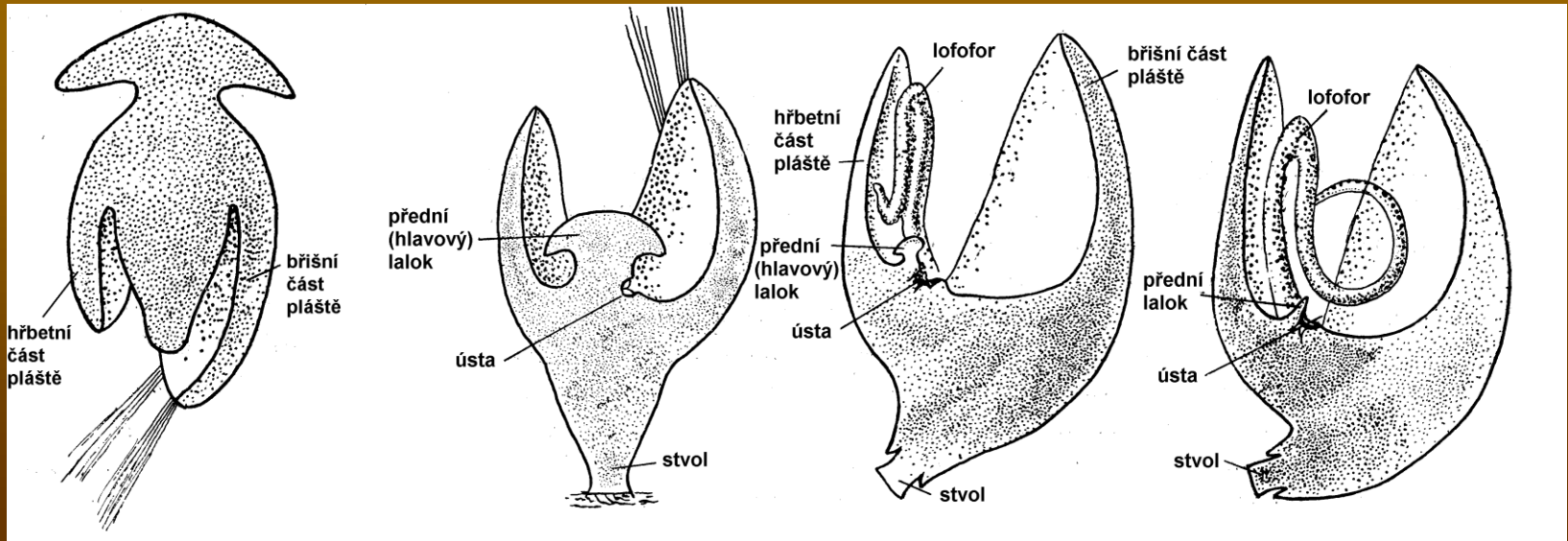
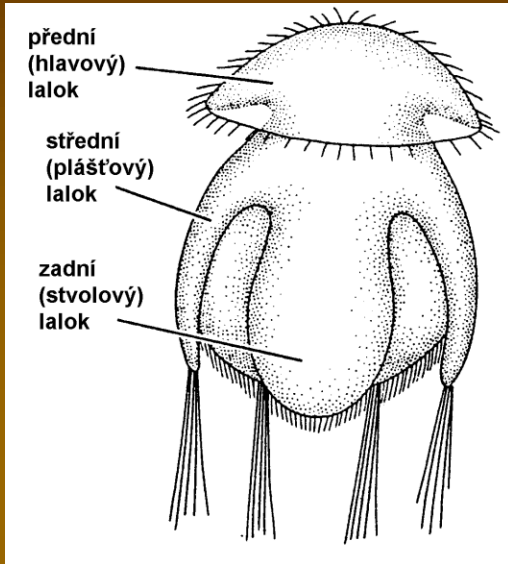
# actinotrocha



# Ramenonožci

# Morfologie larev

# cyphonautes

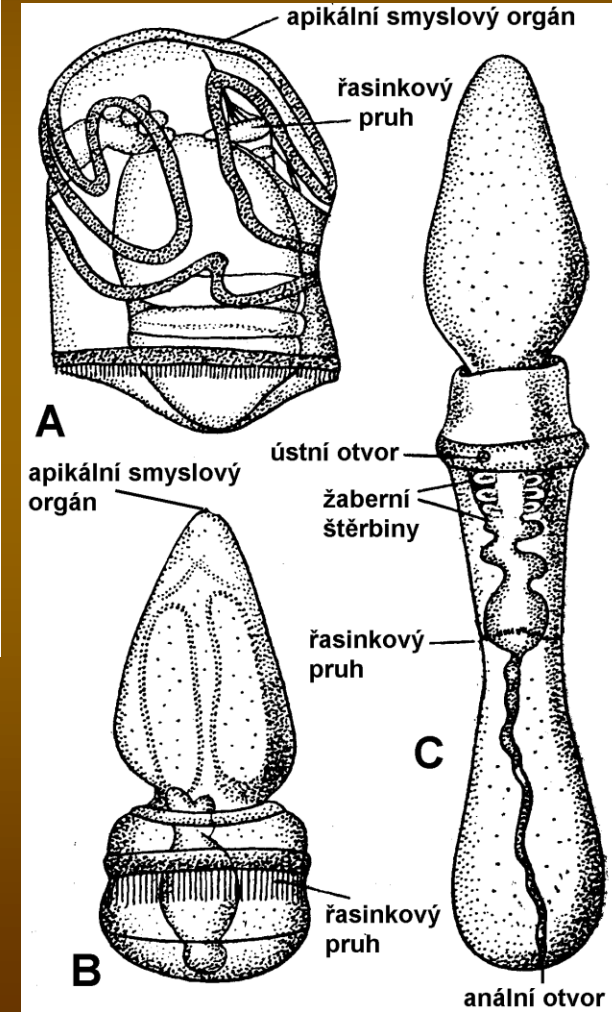
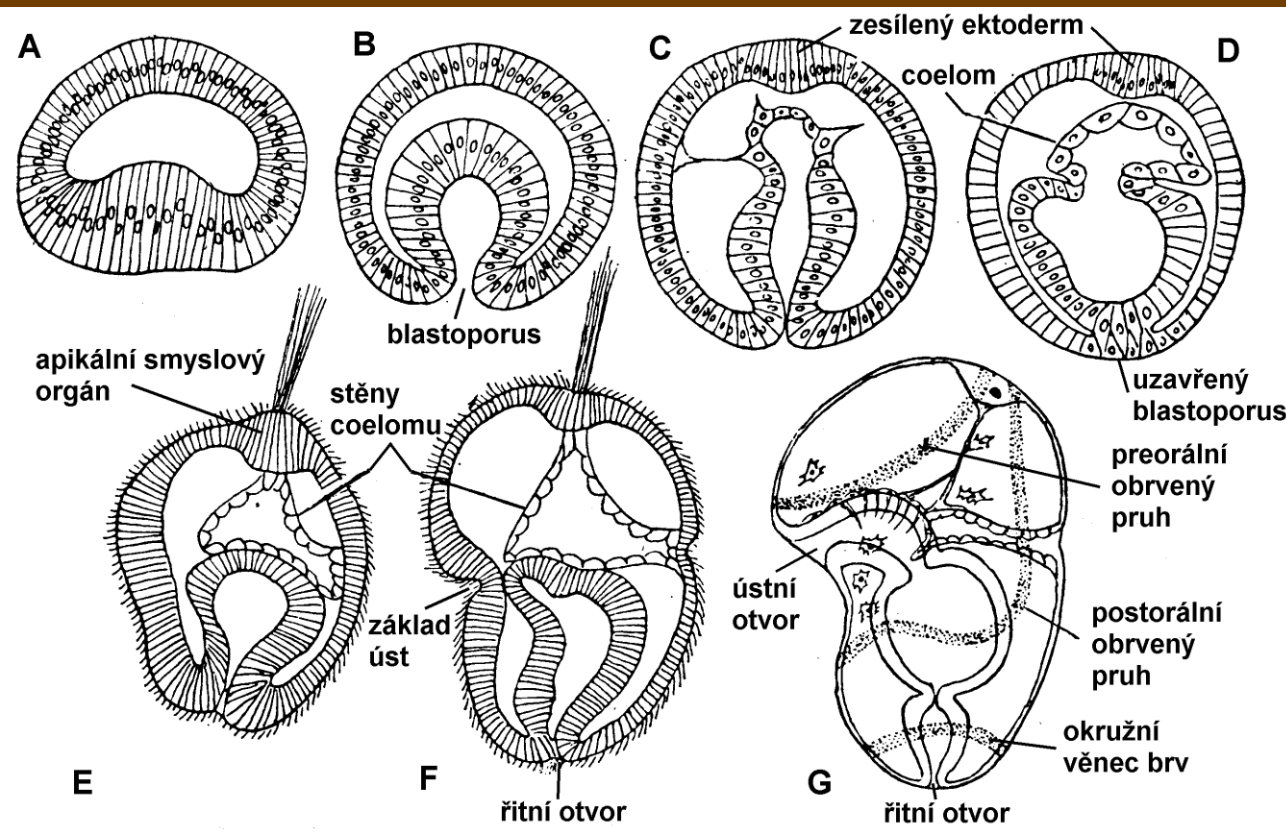




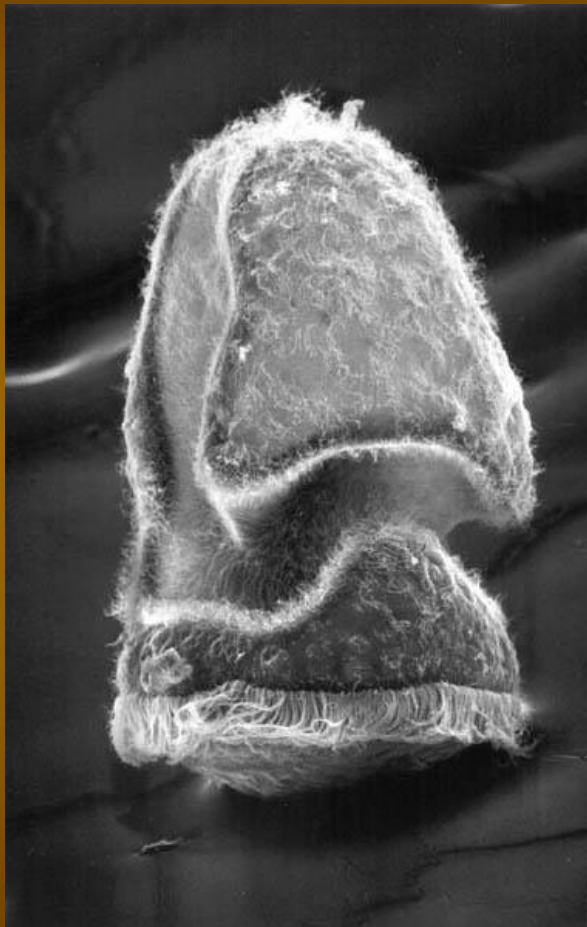
# Žaludovci

# Morfologie larev

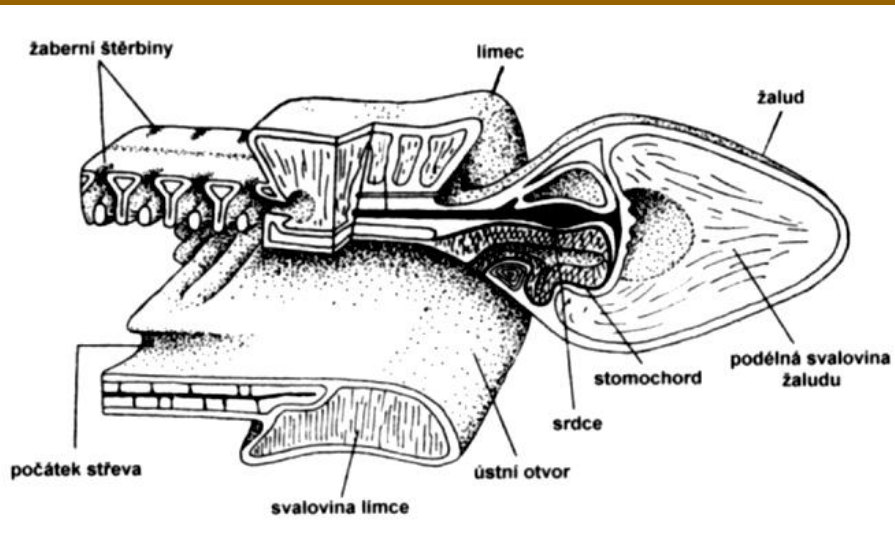
# tornaria



# Morfologie larev

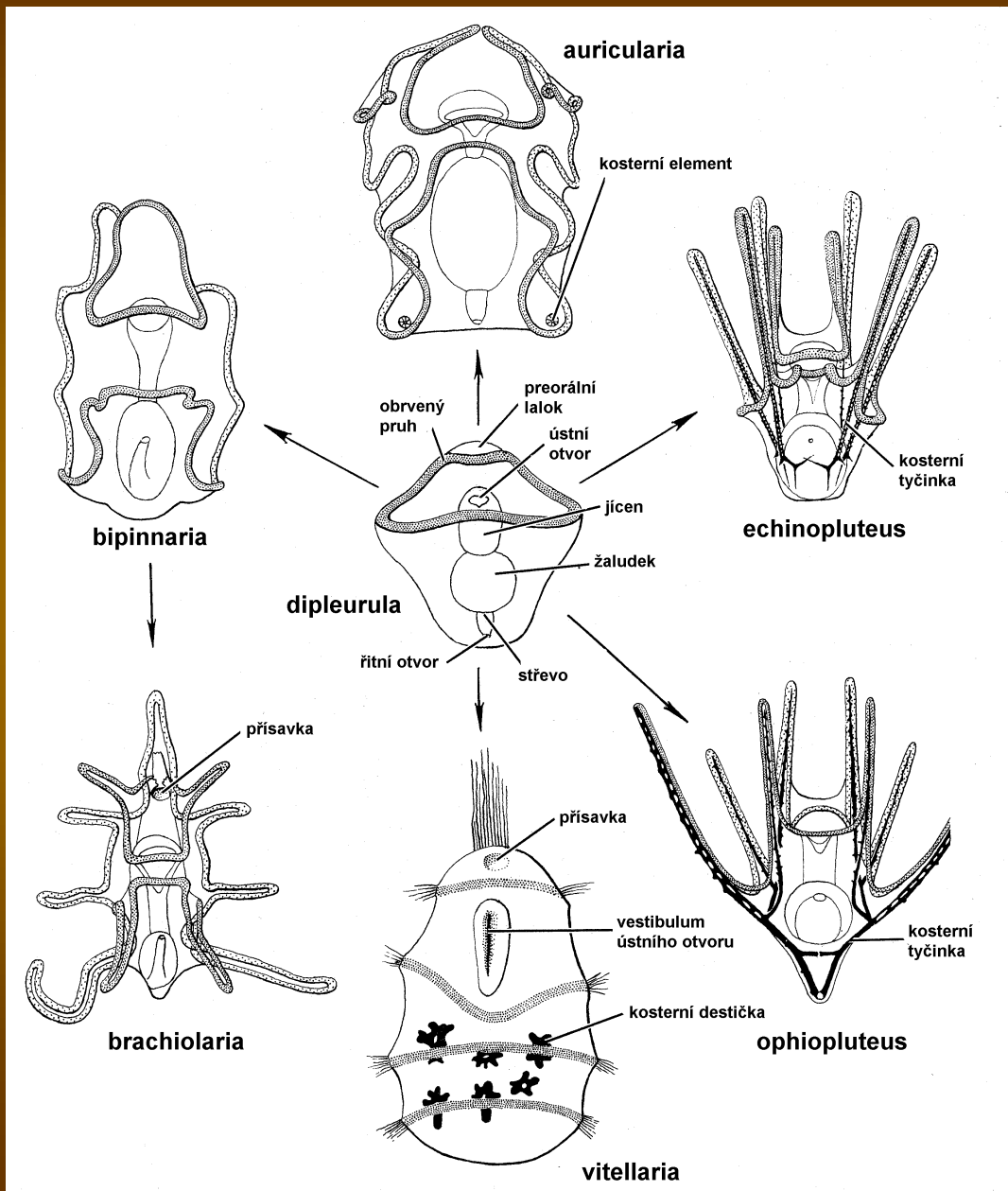


# Morfologie larev



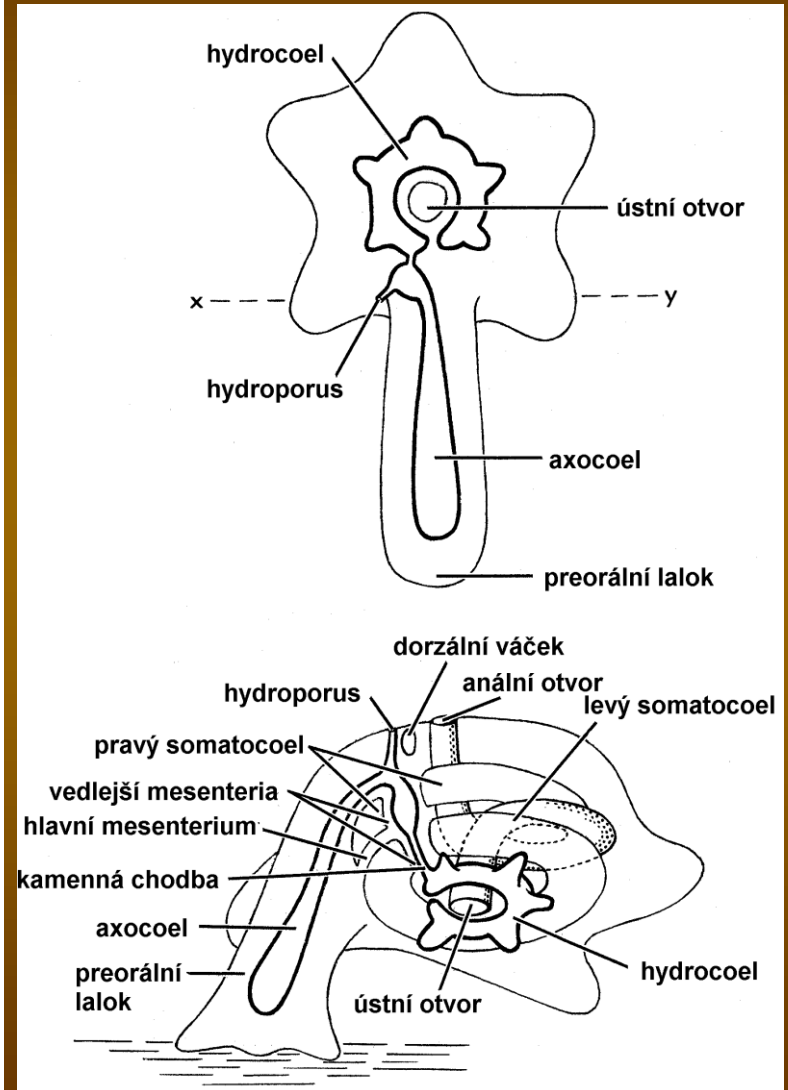
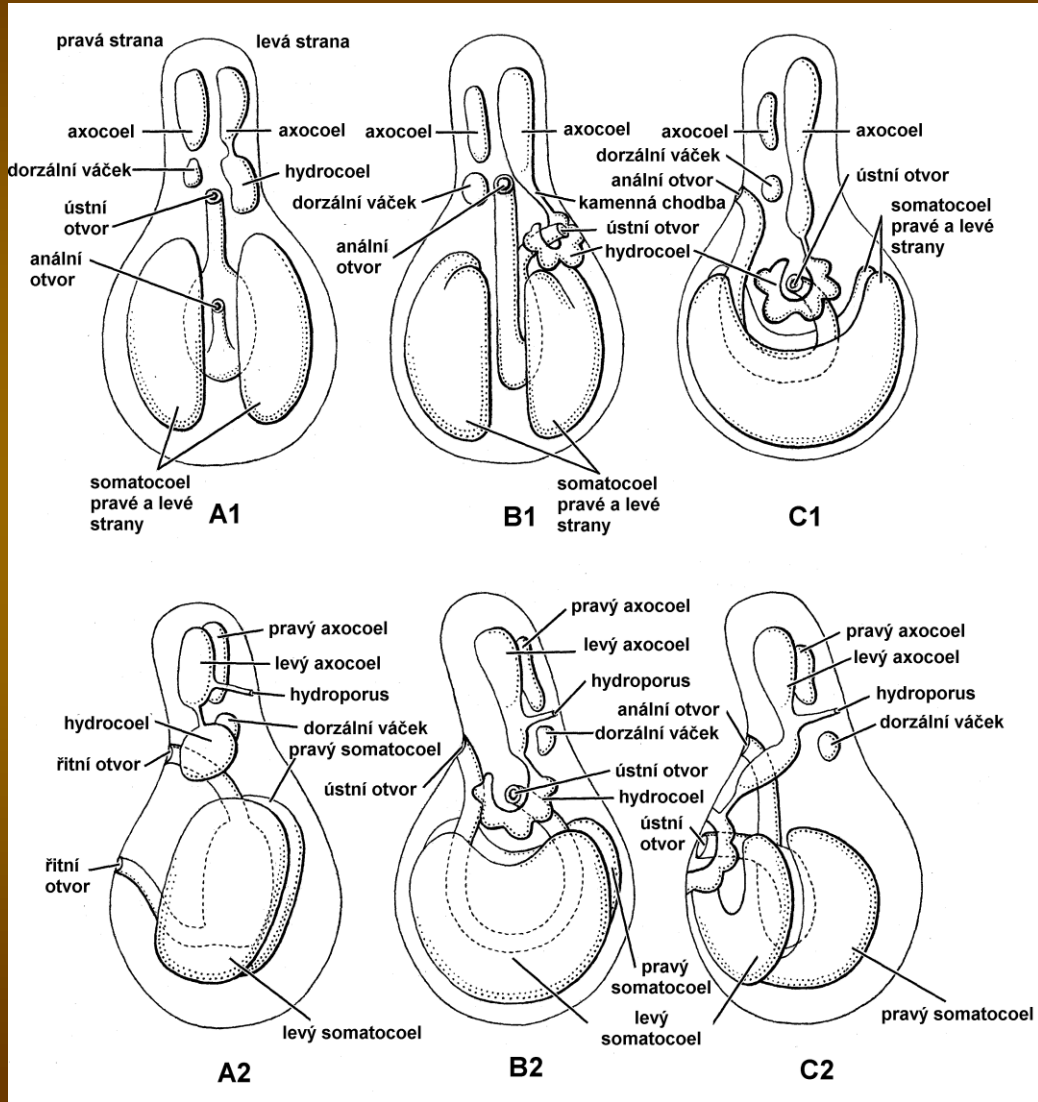
# Ostnokožci

## Morfologie larev



# Ostnokožci

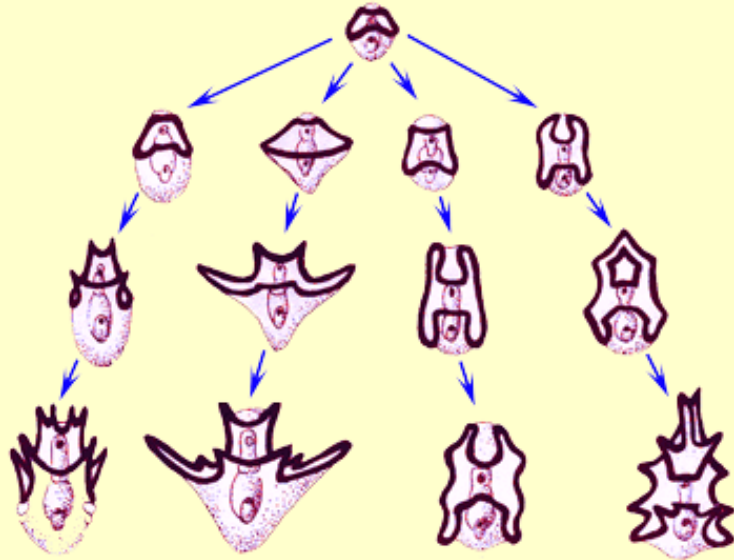
## Morfologie larev



# Ostnokožci

## Morfologie larev

Dipleurula

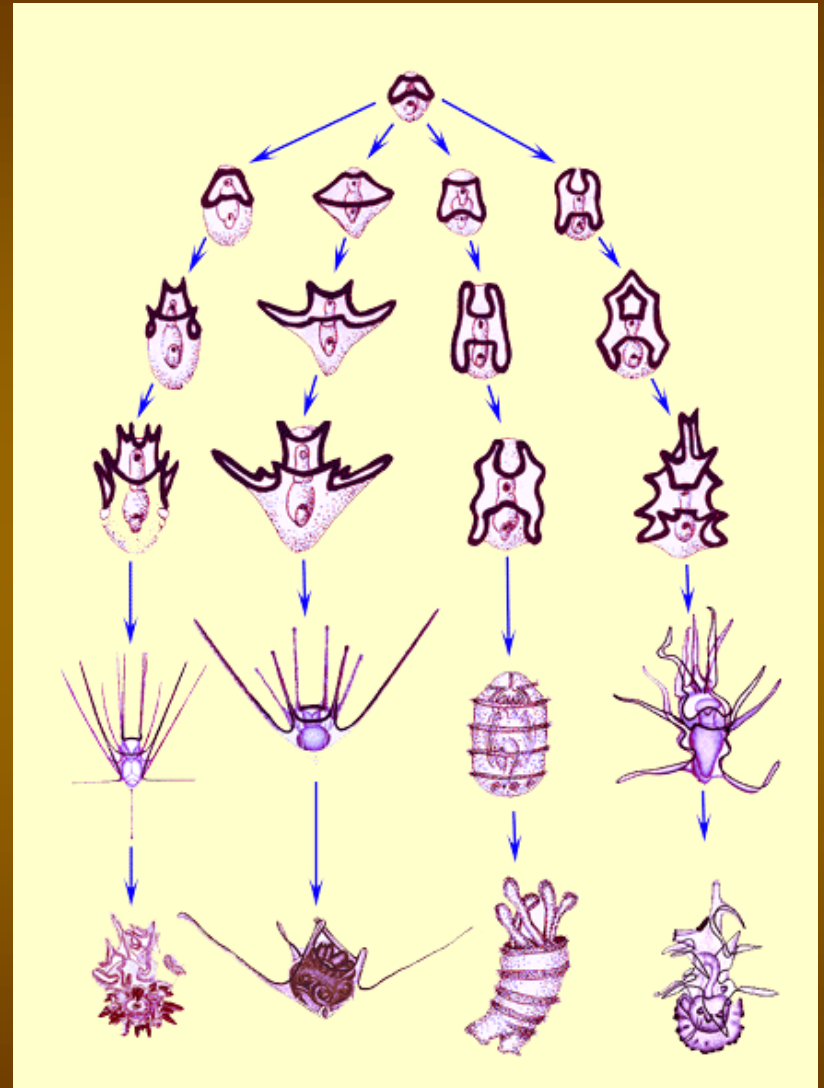


Echinopluteus

Ophiopluteus

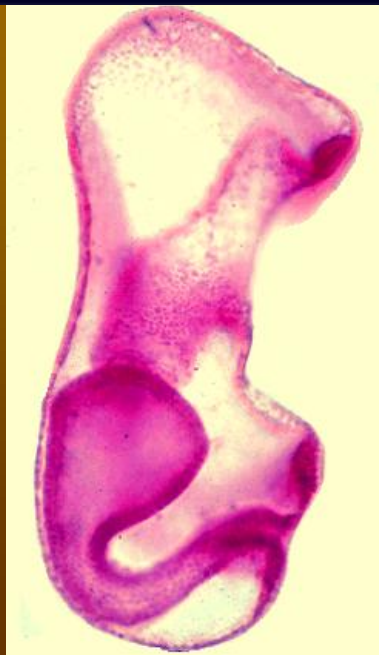
Auricularia

Brachiolaria

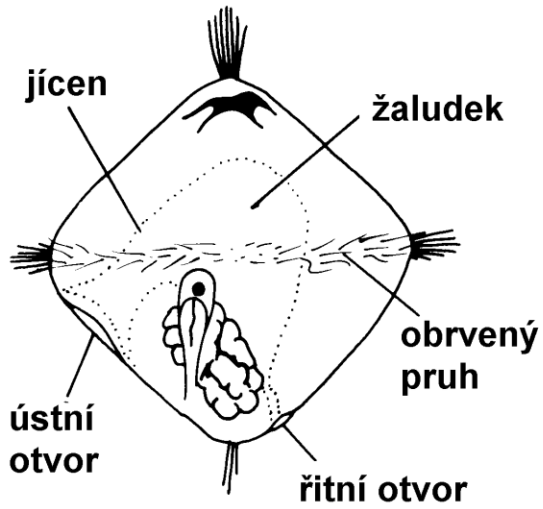


# Ostnokožci

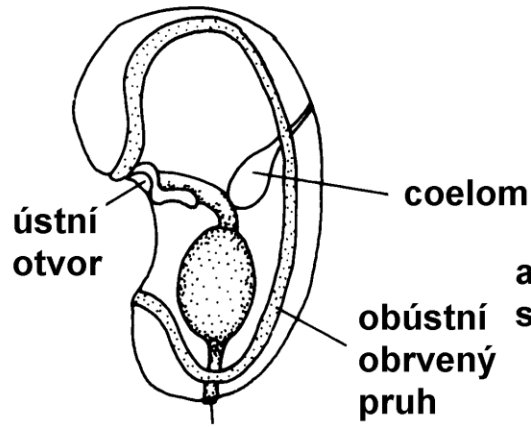
## Morfologie larev



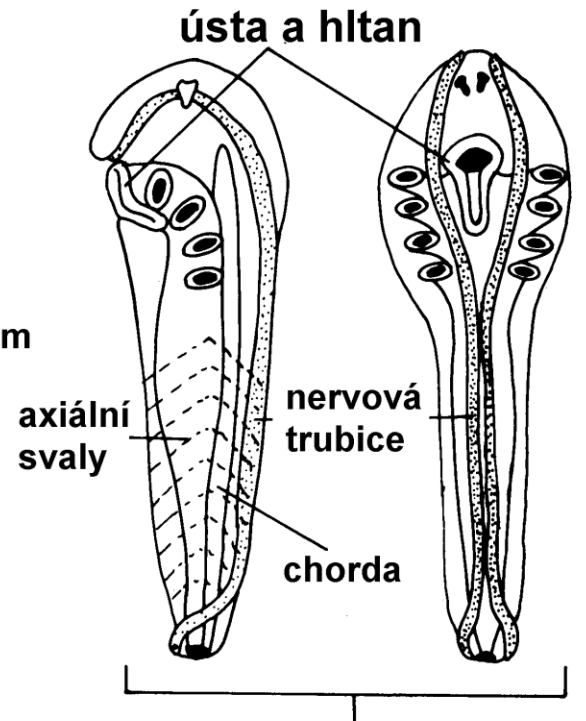
# Morfologie larev



trochofoara



tornaria

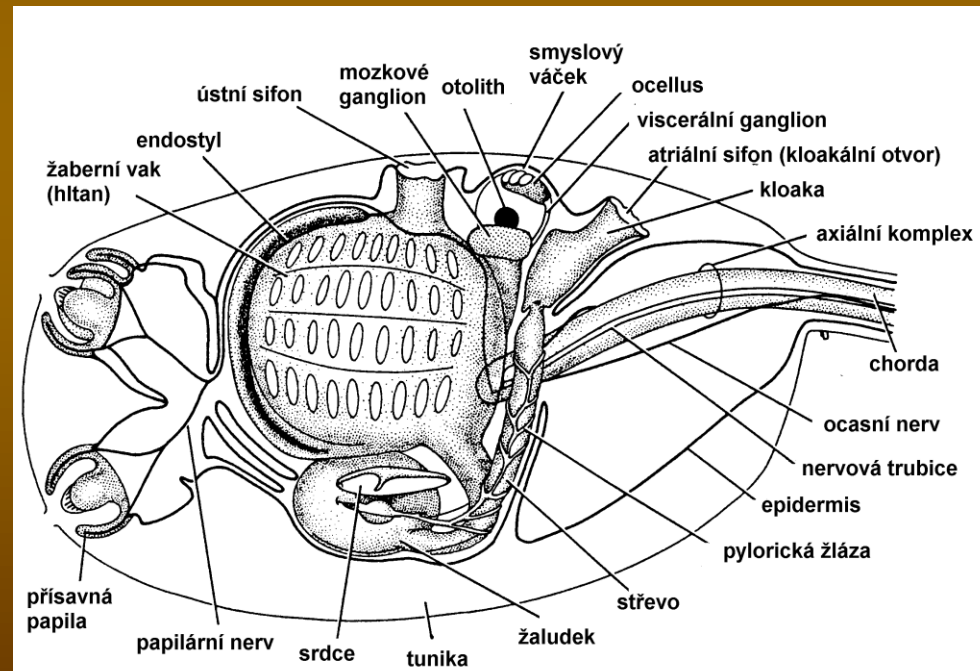
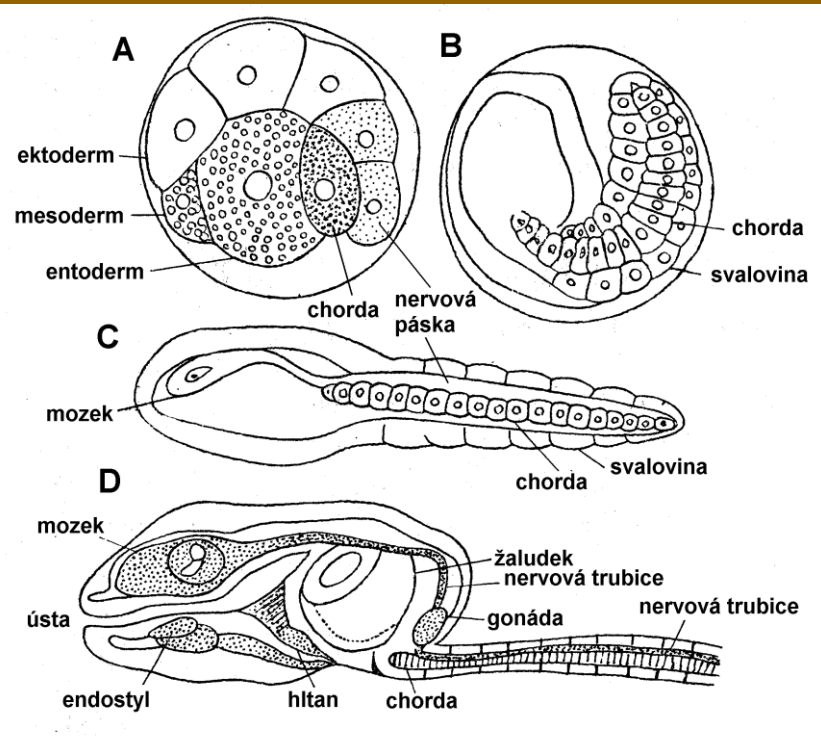
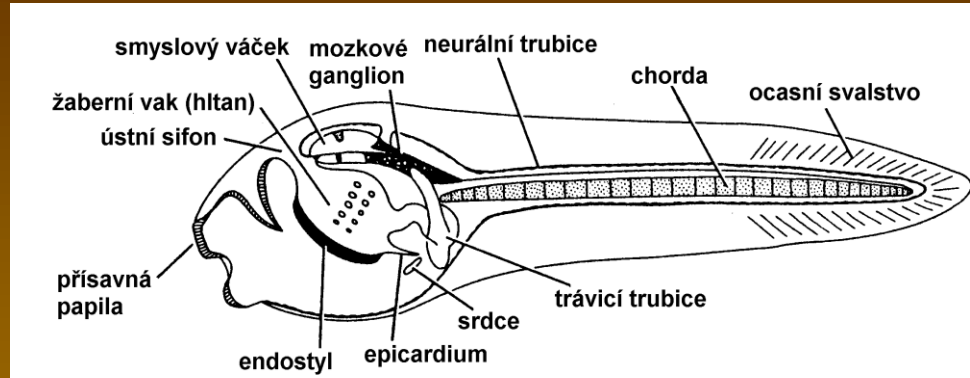


larva primitivních strunatců

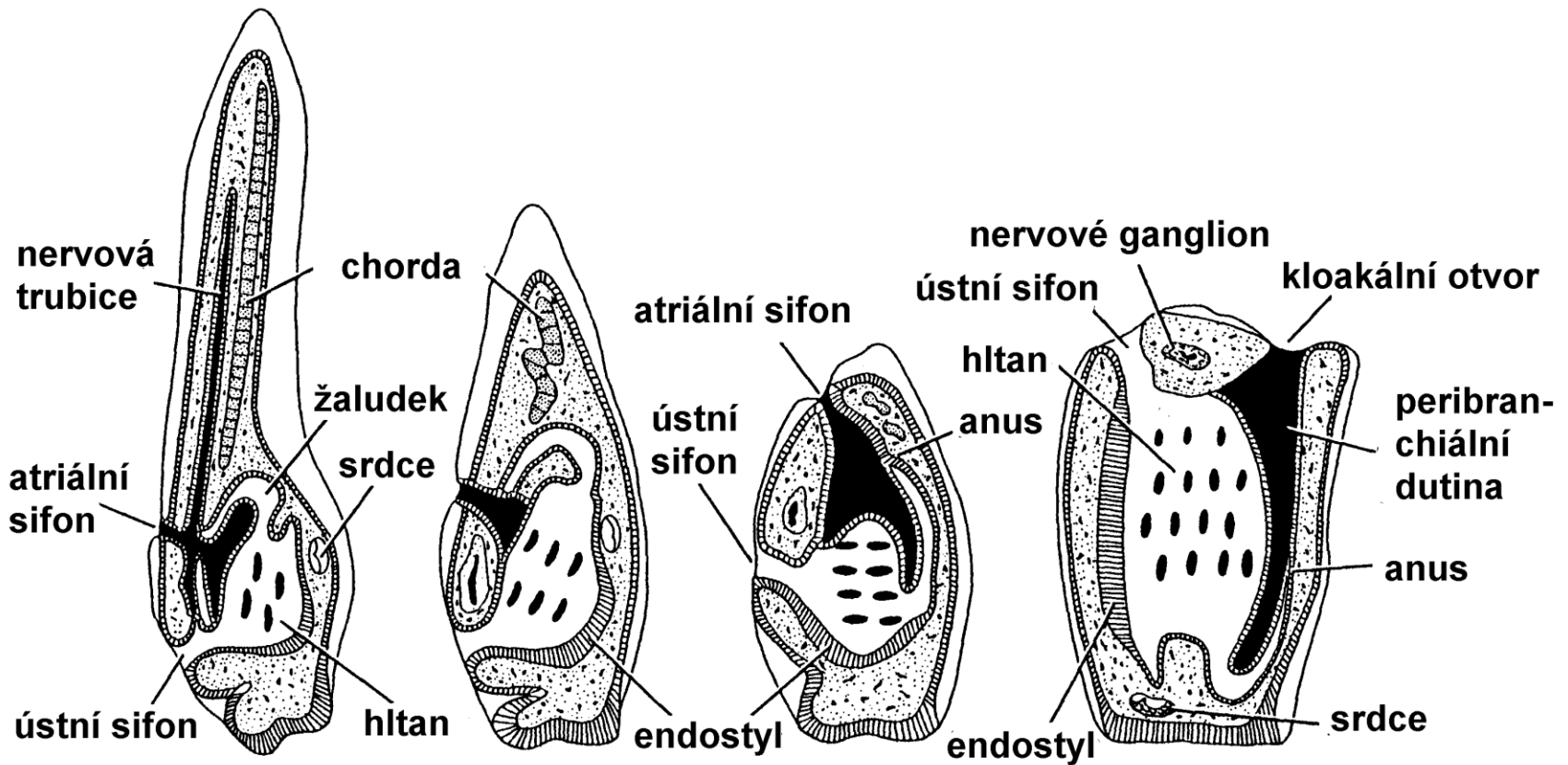


# Morfologie larev

## Pláštěnci

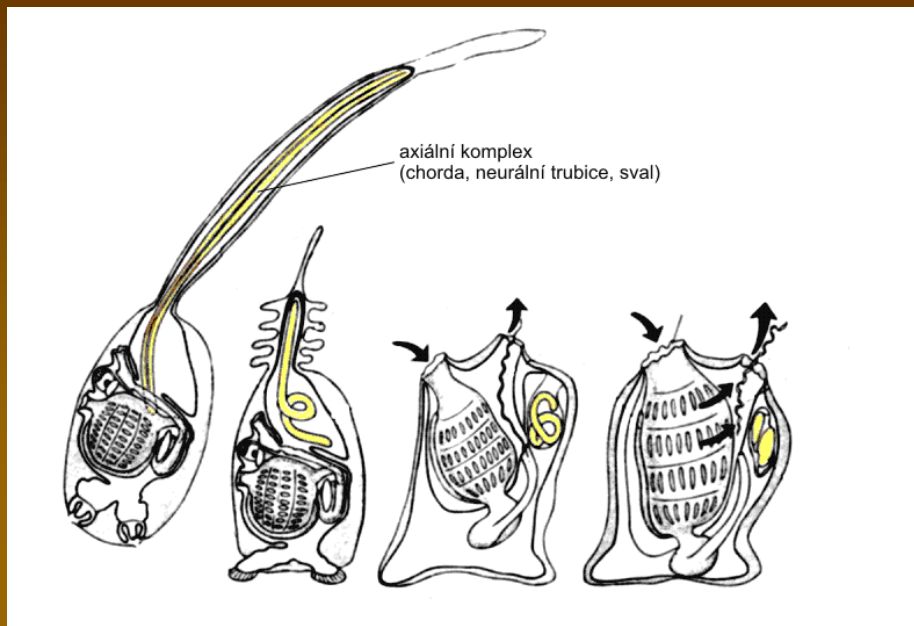


# Morfologie larev



# Pláštěnci

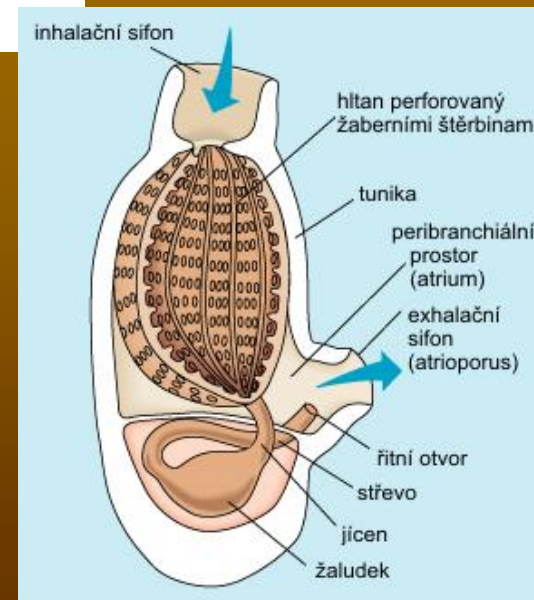
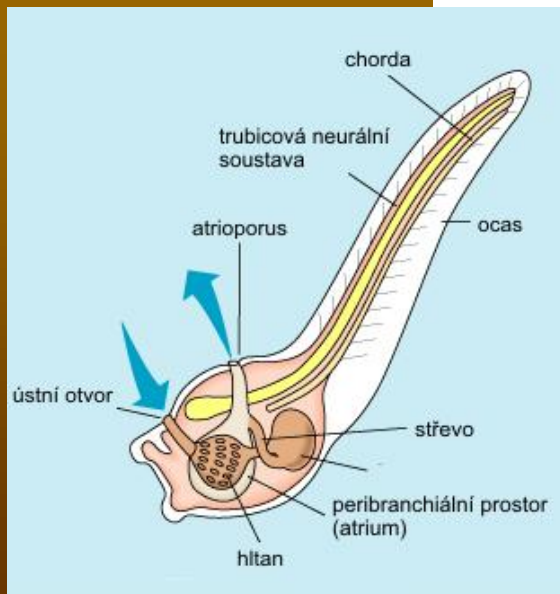
## Morfologie larev



5 minut

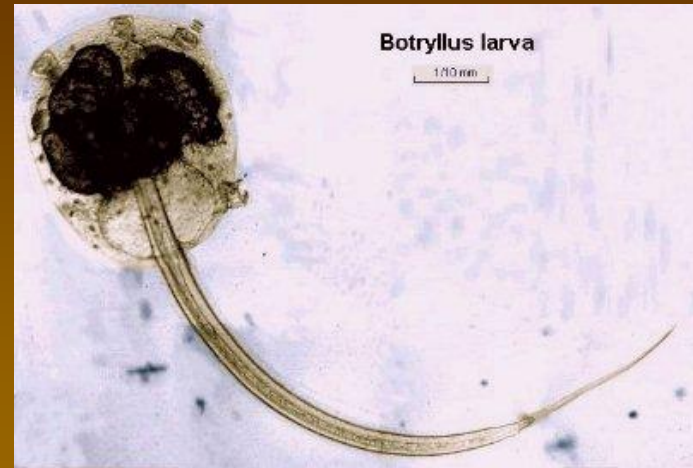
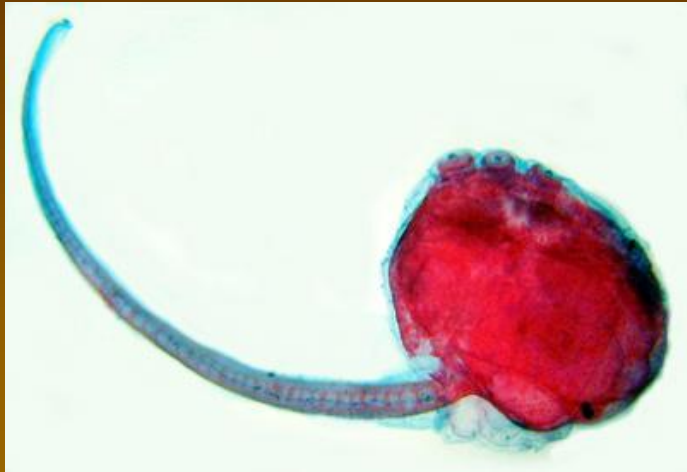
18 hodin

48 hodin



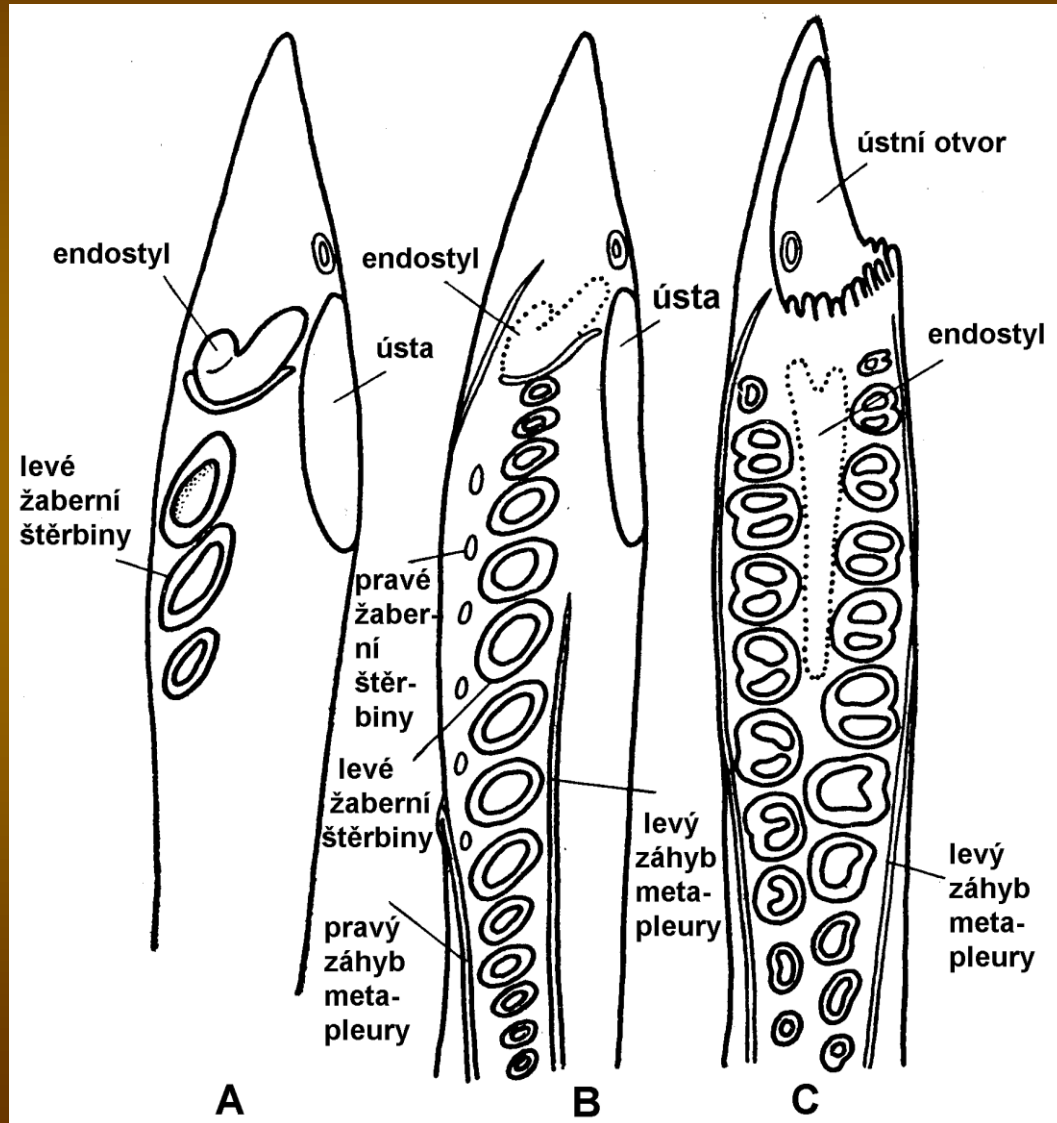
# Pláštěnci

## Morfologie larev



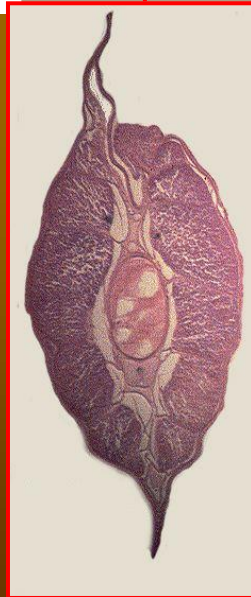
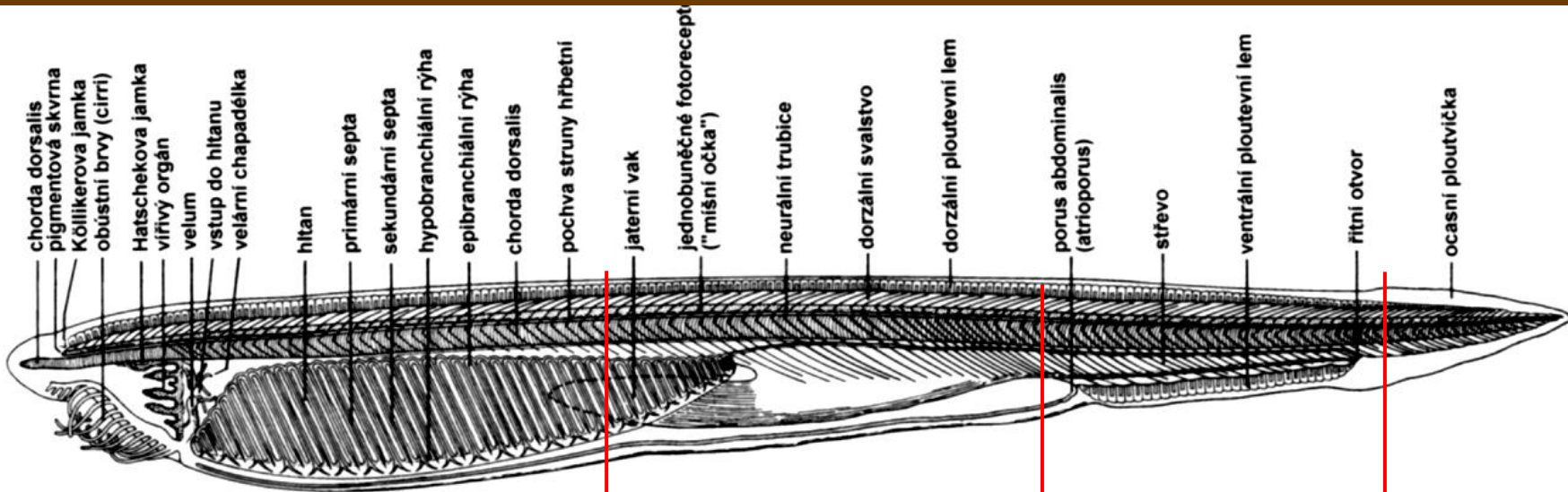
# Morfologie larev

## Bezlebeční



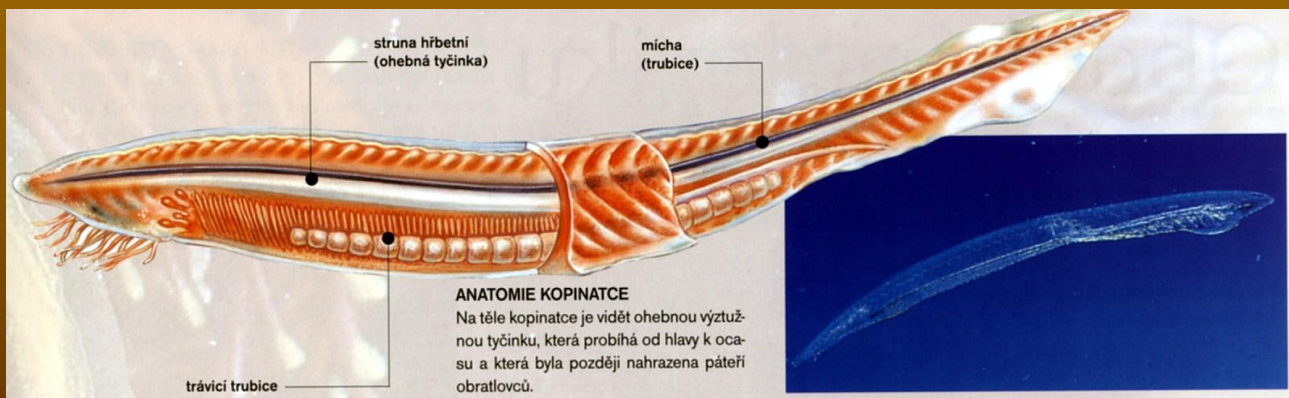
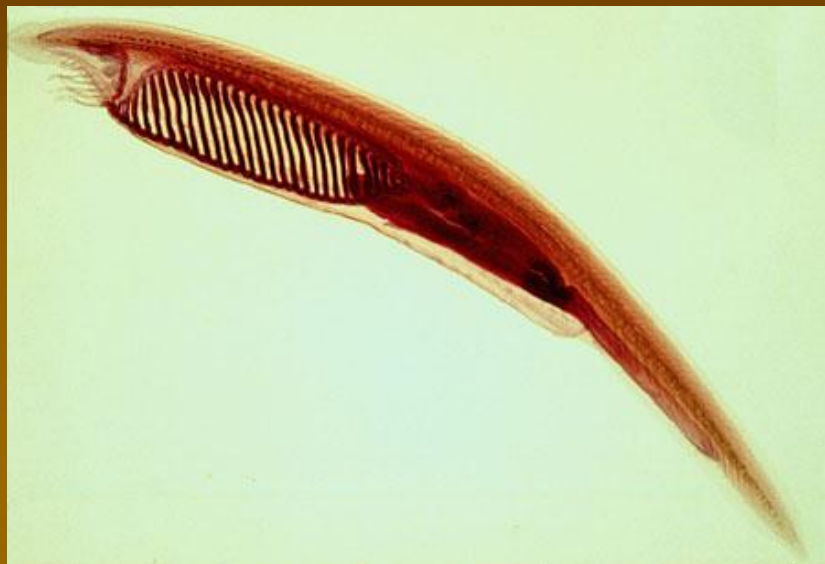
# Bezlebeční

## Morfologie larev



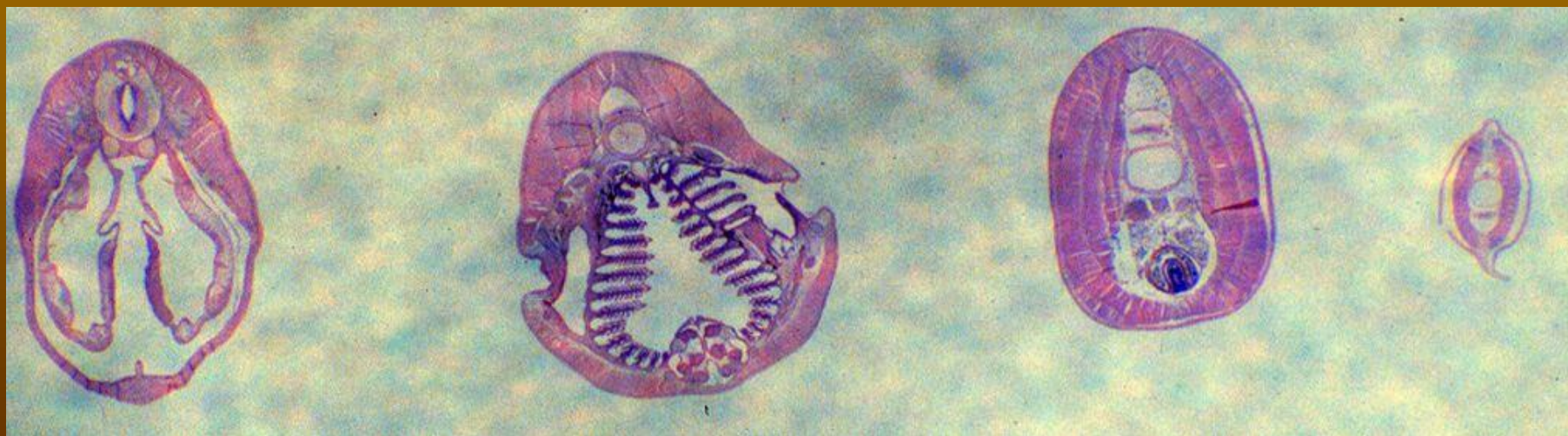
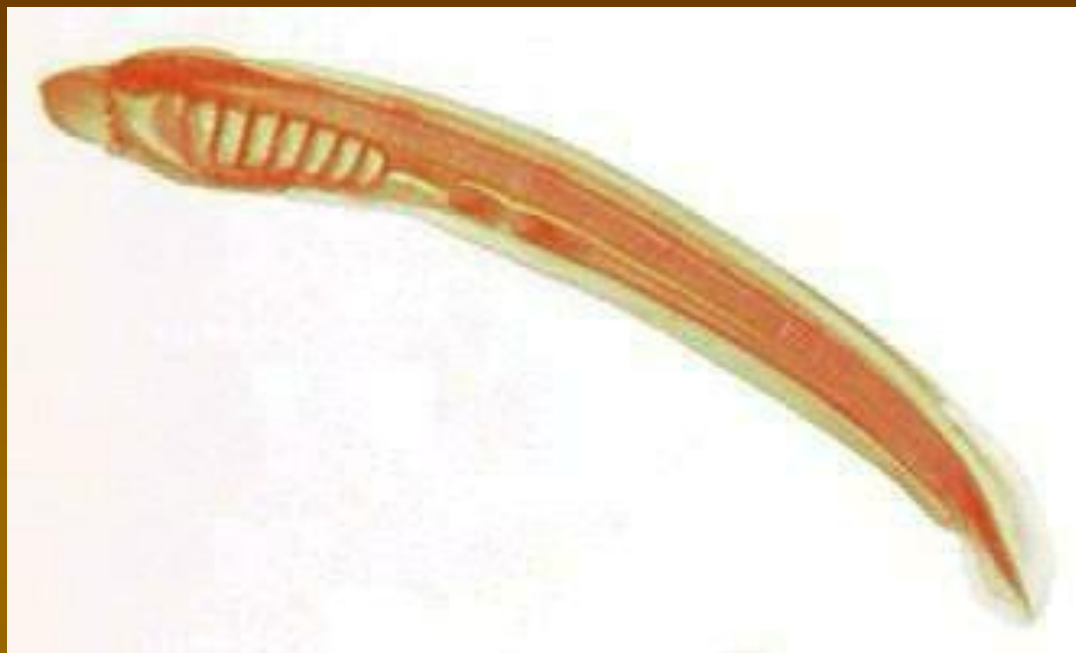
# Bezlebeční

## Morfologie larev



**Bezlebeční**

Morfologie larev





# Morfologie larev

## Bezlebeční

