

The Secondary Data Collection

Lesson 4- 15.10.2013

What are Secondary Data

‘Secondary data’ means the information which has already been collected by someone else (researchers, institutions or NGOs), for other purposes than the one currently being considered (Cnossen, 1997) . They include

- Official data collected by public bodies by spending public money.
- Data collected by firms NGOs or individuals.

Sources of Secondary Data

- Government and their various agencies, bureaus, departments (Census of population, agriculture or industries).
- Administrative Records
- Technical reports: account of work done on development projects (feasibility studies)
- Diaries
- Planning documents (EIA reports)
- Maps
- Areal photographs
- Sound recordings (Radio and TV Programmes)

National Level Secondary Data

- Demographic data (population, rural/urban, ethnic group)
- Economic data (income, poverty, subsidies)
- Social data (employment, local institutions,
- Cultural data (religion, ethnicity,
- Infrastructure

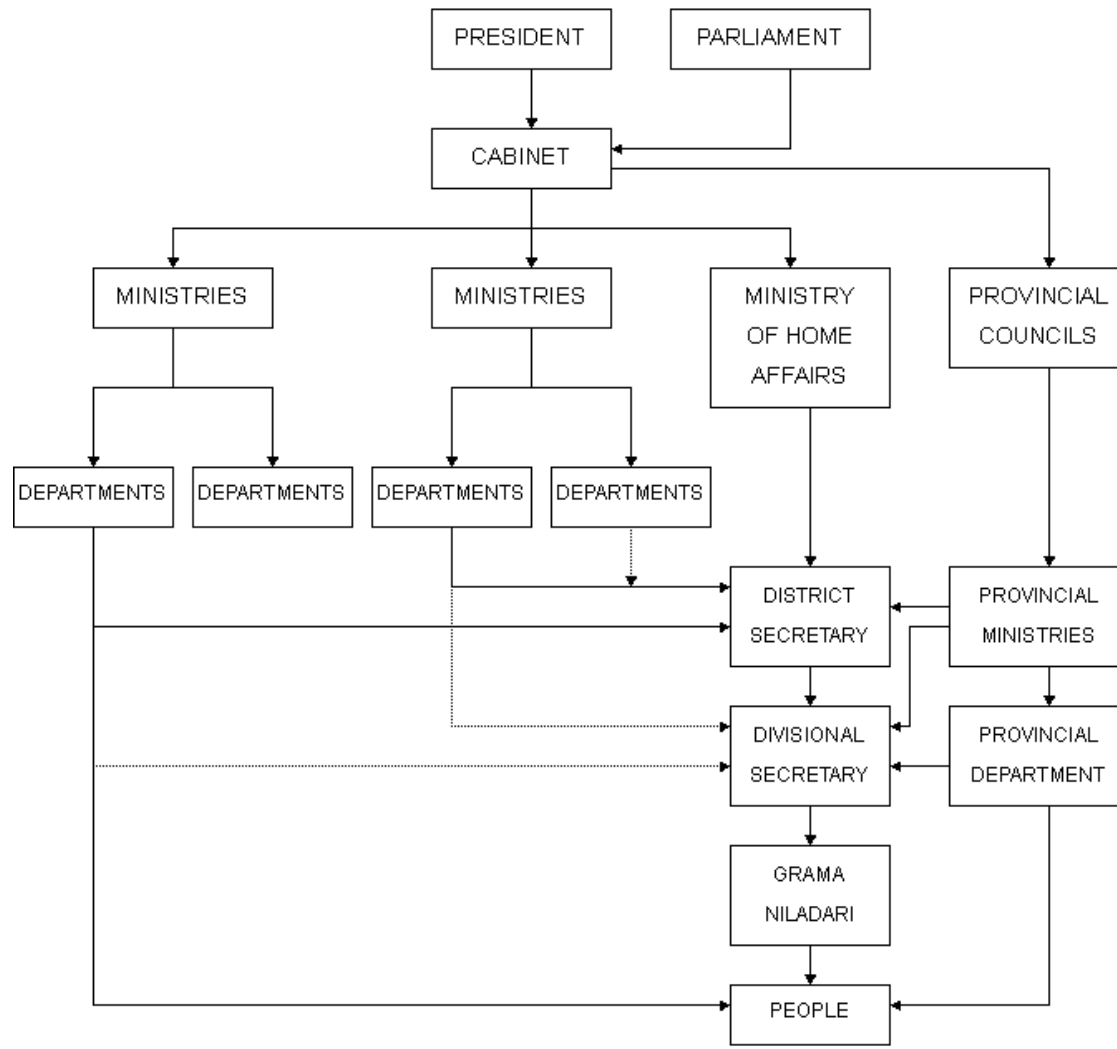
Most of such data could be at aggregate level, however, depending on the country you can go for lower levels (in Sri Lanka, the lowest unit is GN level. How much the data are realistic? (*National pride*, Data could be old, as it is taken once after a regular interval).

Sources of selected official statistical data in Developing Countries

Country	Source	Remarks
India	http://www.censusindia.net	Office of the Registrar General and Census Commissioner of India
Sri Lanka	www.statistics.gov.lk	Department of Census and Statistics of Sri Lanka
Nepal	cbs.gov.np	Government of Nepal Central Bureau of Statistics
Bangladesh	www.bbs.gov.bd	Bangladesh Bureau of Statistics

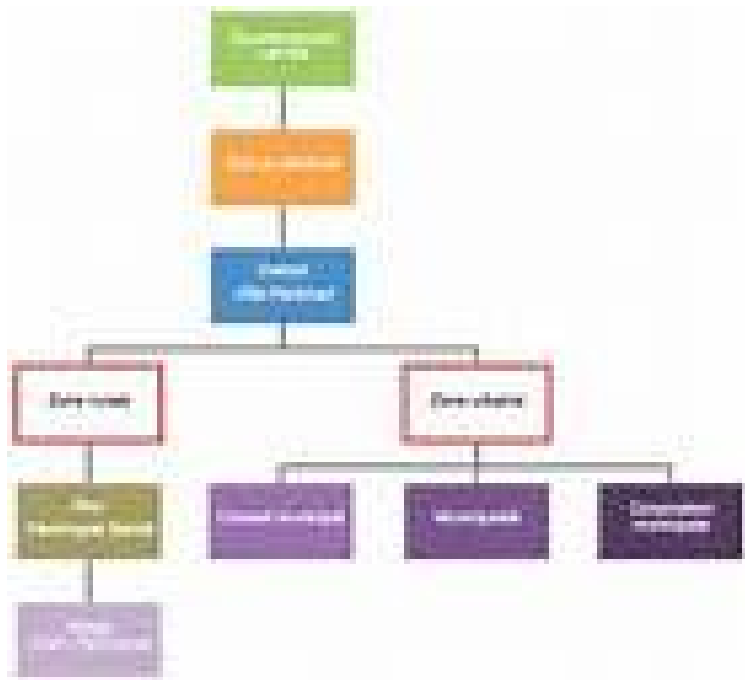
General Administrative Structure: Secondary Data Collection Point

ADMINISTRATIVE ORGANIZATION STRUCTURE IN SRI LANKA

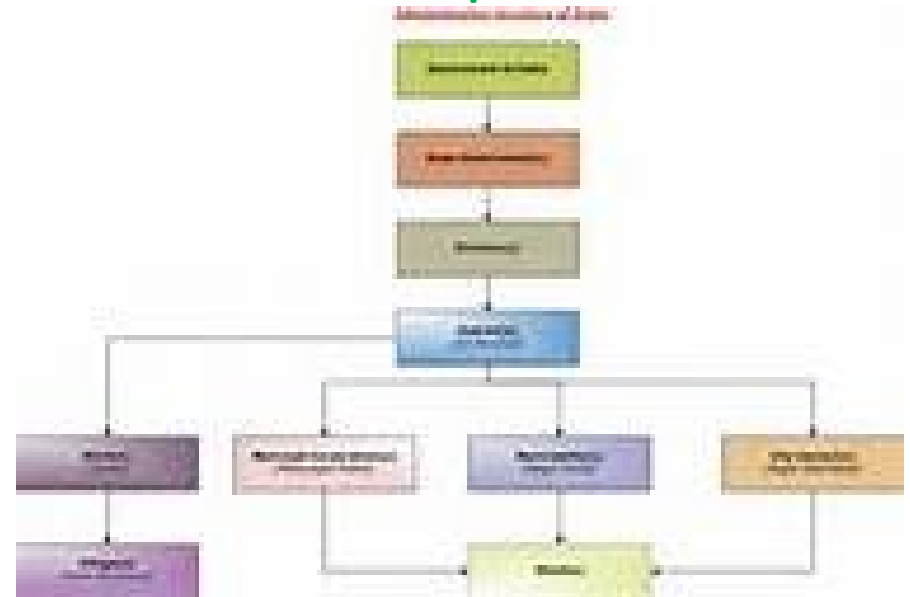


Administrative Structure

India



Nepal



Data Available at GND Level in Sri Lanka

Grama Niladari Division(GND) is the lowest Administrative Division

A Grama Niladari



Grama Niladari Office



GND Map

-Crude map of the village, most occasions no scale. But such maps can also contain some village specific additional information which are not available in the other large scale maps.



-Lists pasted on the walls of the GN's office



Resource profile of the GND

Household name list in the GND

-Agricultural land use in the GND

Advantages of Secondary Data

- Easy to build up the background of the research area. This is very important particularly for an outside researcher
- Easy to collect
- Researcher can save time and money
- Can easily be used for trend analysis as long term data is available

Disadvantages of Secondary Data

- It is not often possible to judge on quality of secondary data
- Sources may conflict with each other
- Secondary data can not reveal individual or group values, beliefs or reasons that may be underlining the currant trends (Beaulieu, 1992)
- Unit of secondary data collection (income you can have gross income, if you want disposable income, you can not get)

Quality of Secondary Data in Developing Countries

- Government official data- comprehensive, available for a long term, and generally trustable

But, at certain occasions they may characterize following problems owing to under-skilled enumerators used and lack of supervision

- Unreliability
- Data gaps
- Inaccuracies
- Mutual inconsistencies (Gill, 1993)

Evaluation of secondary data

1. Availability
2. Relevance (units of measurement and concepts used must be the same)
3. Accuracy
4. Sufficiency

Towards resolving problems

- Make use of local Experts: regarding quality of data seek advice from sector specialists, country offices, colleagues in the universities and research stations
- Yourself determine the original purpose of the data collected (Novak, 1996)
- Attempt to ascertain the credentials of the source or author (education backgrounds, past works)
- Pay skeptical attention of employment data. “It is very difficult to count on the employment data accurately, especially in developing countries” (Katherine, 2005)- Informal or unrecorded activities, such as seasonal agricultural workers, women’s agricultural labor, Child labor, primary employment, secondary or other

For the discussion on 22.10.2014

- 1. Make a list of secondary data available at the lowest level administrative unit where you live preferably with a map**
- 2. Taking into account a developing country construct a research topic for you to study a geographical problem**