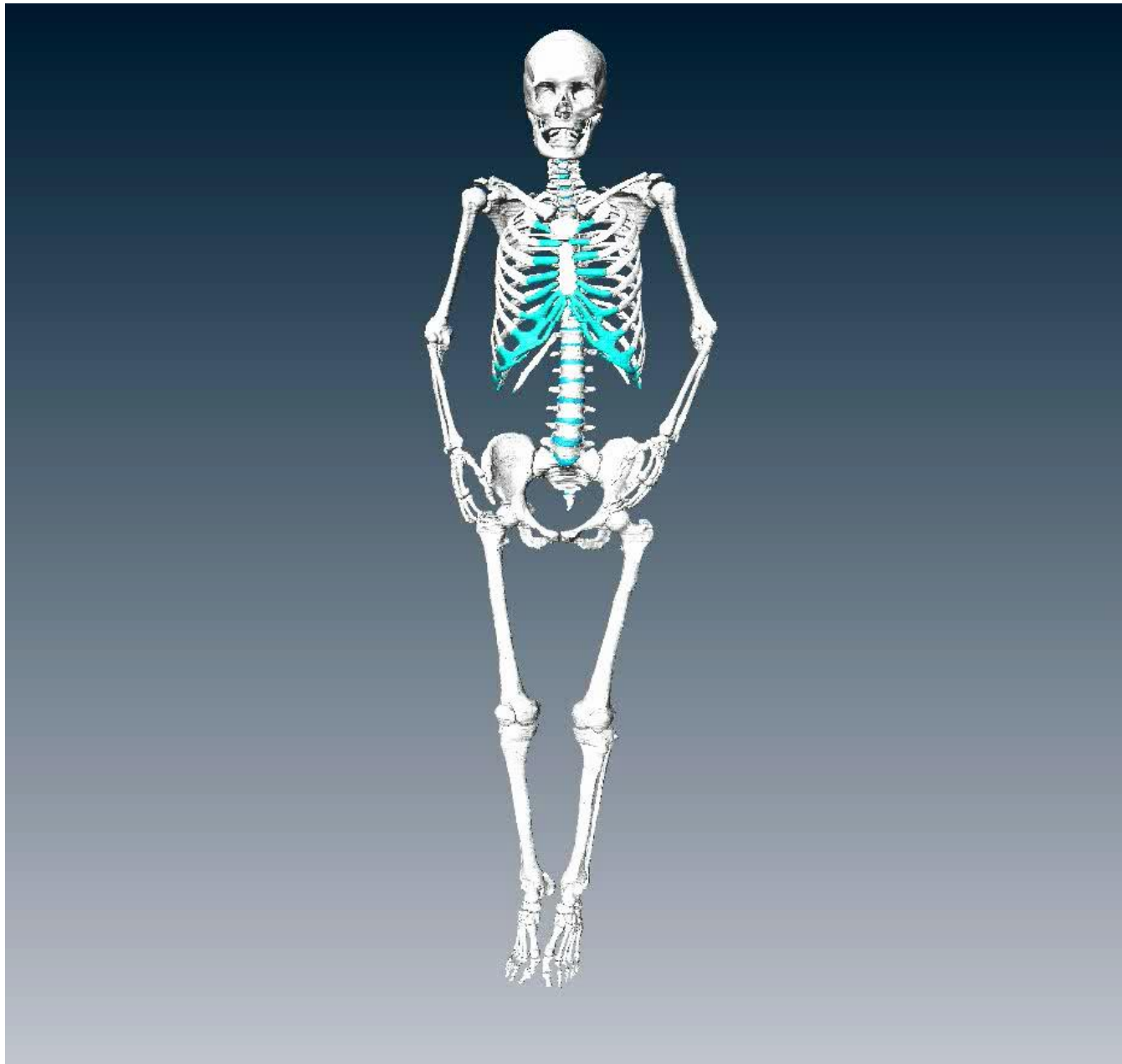
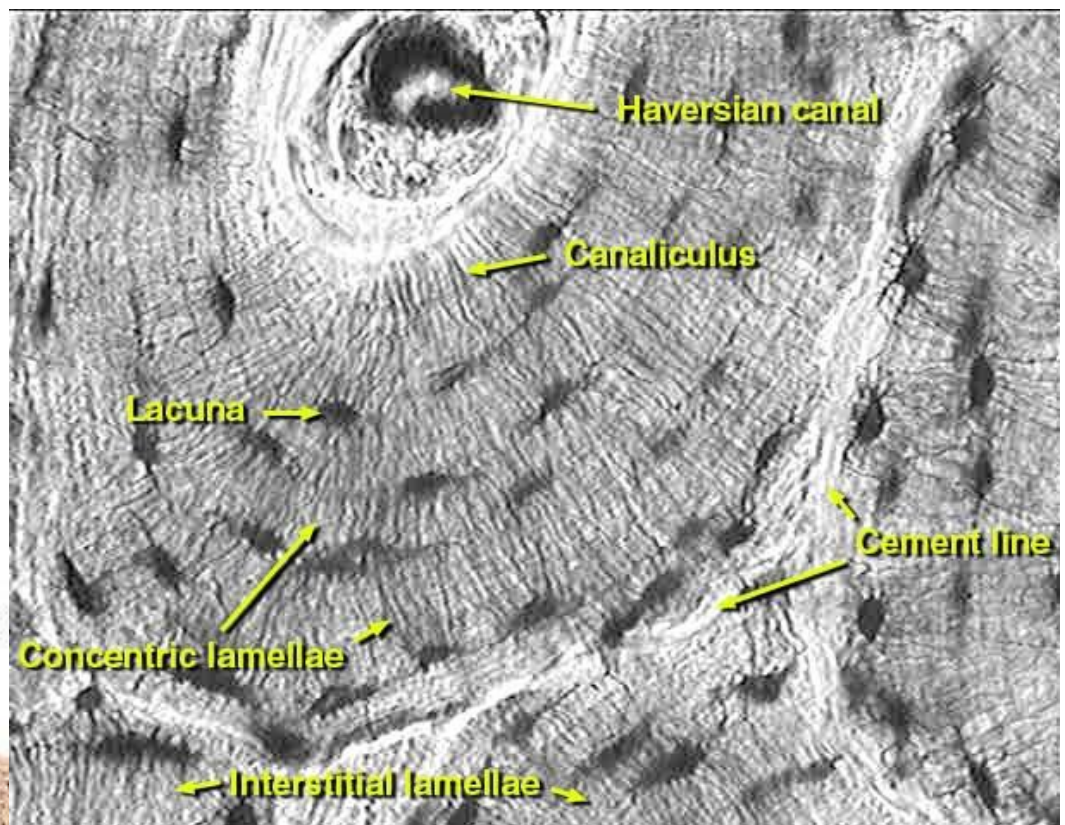


Anatomie člověka

Vertikalizace lidského těla jako klíč k
hominizaci: změny na kostře, příčiny
a důsledky



Compact Bone & Spongy (Cancellous)



Lacunae containing osteocytes

Lamellae

Canaliculi

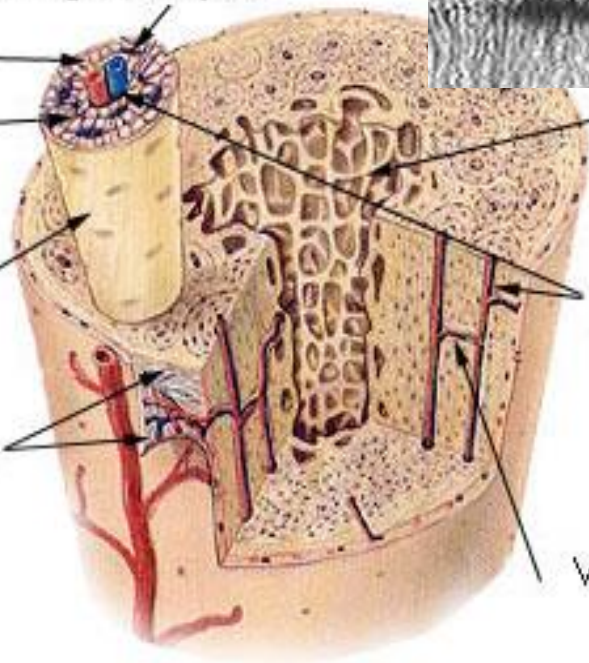
Osteon

Periosteum

bone

Haversian canal

Volkman's canal

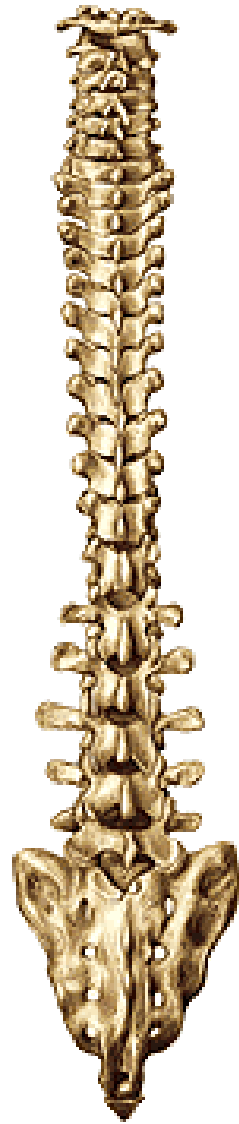
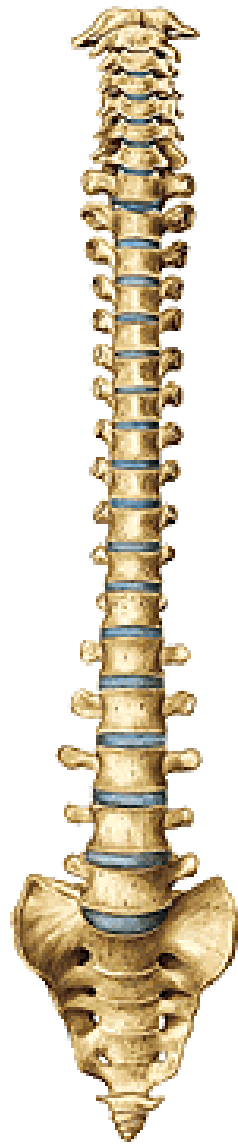


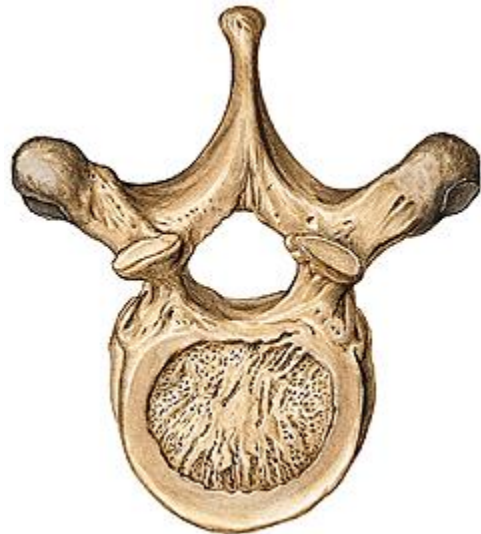


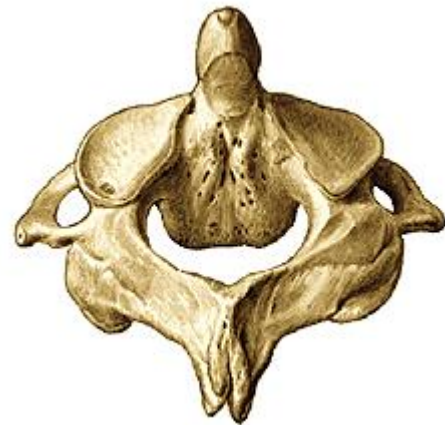
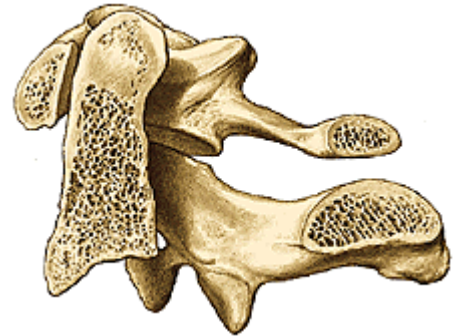
ANIMAL

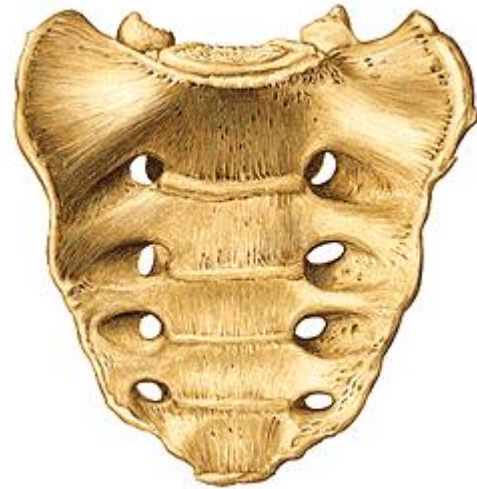


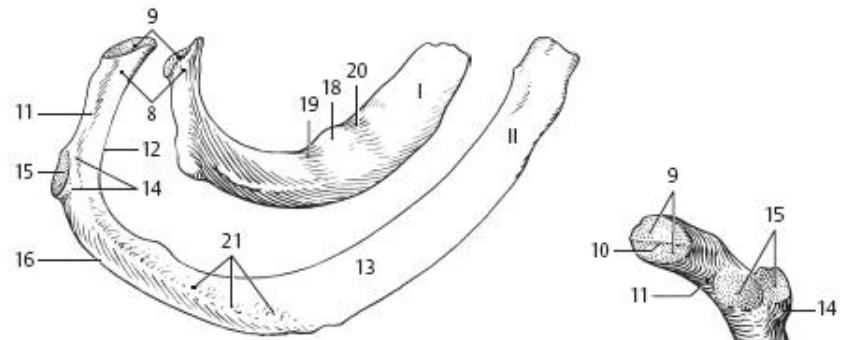
HUMAN



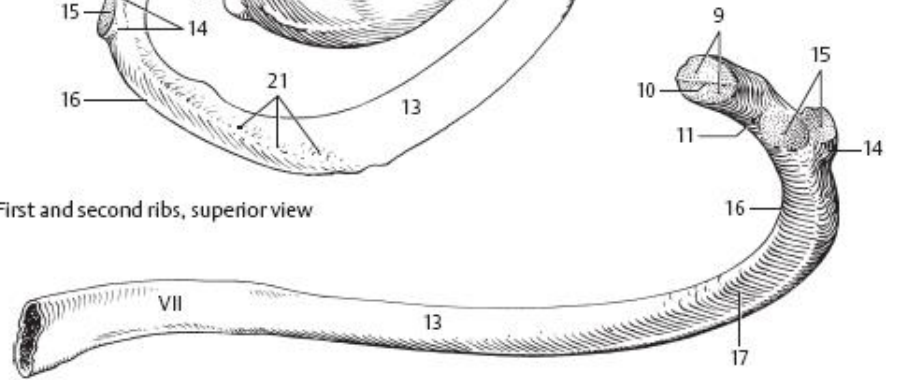




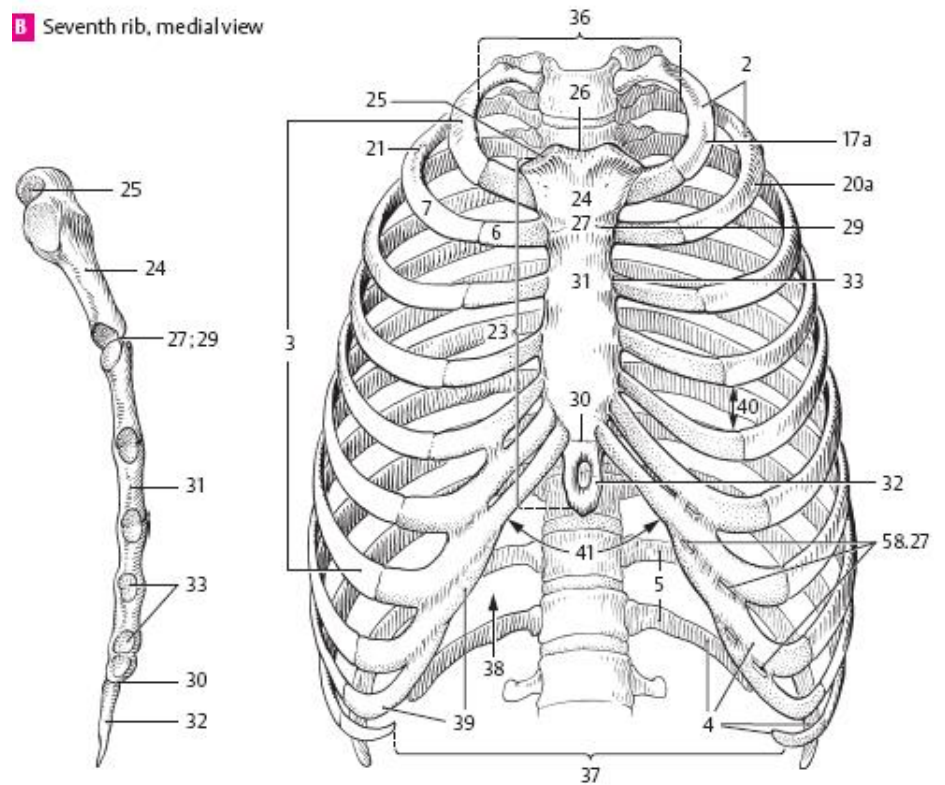




A First and second ribs, superior view



B Seventh rib, medial view



C Sternum from right

D Thoracic skeleton, anterior view

