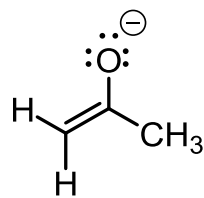
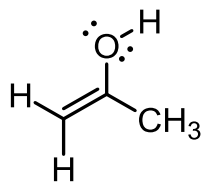
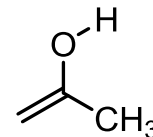
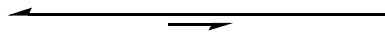
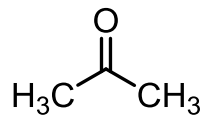


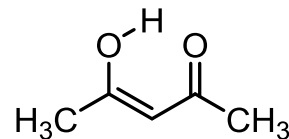
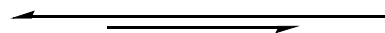
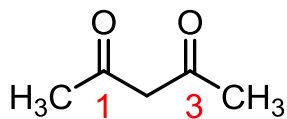
ENOLY A ENOLÁTY



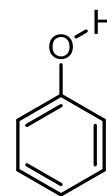
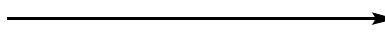
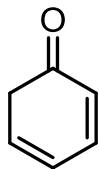
**% enolu
ve vodě**



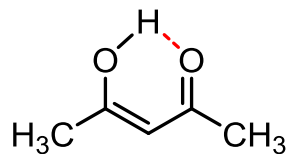
2.5×10^{-4}



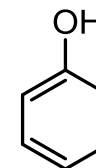
20



100

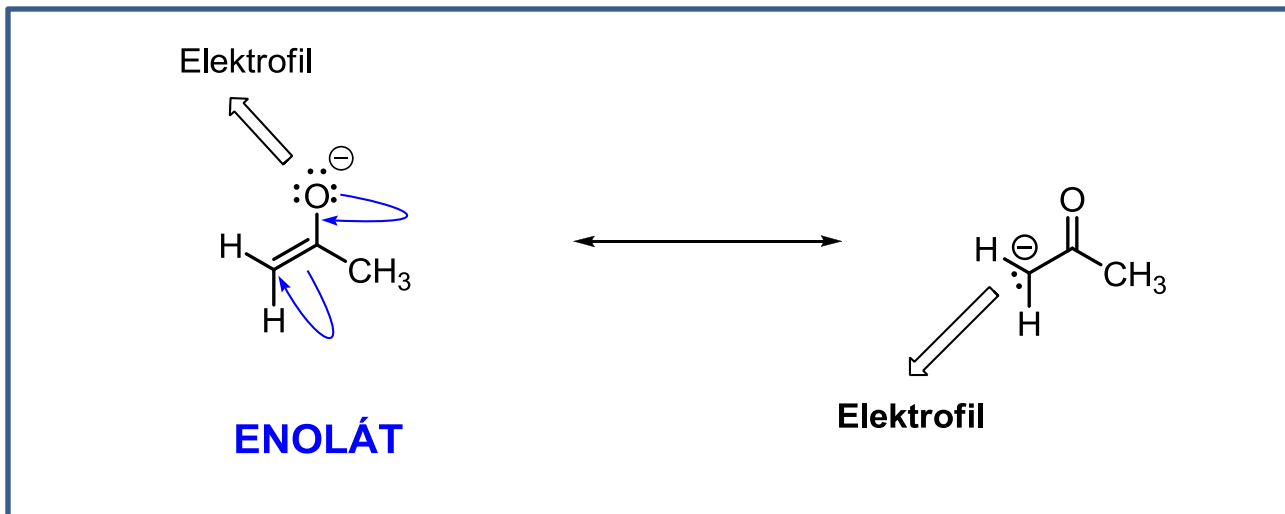
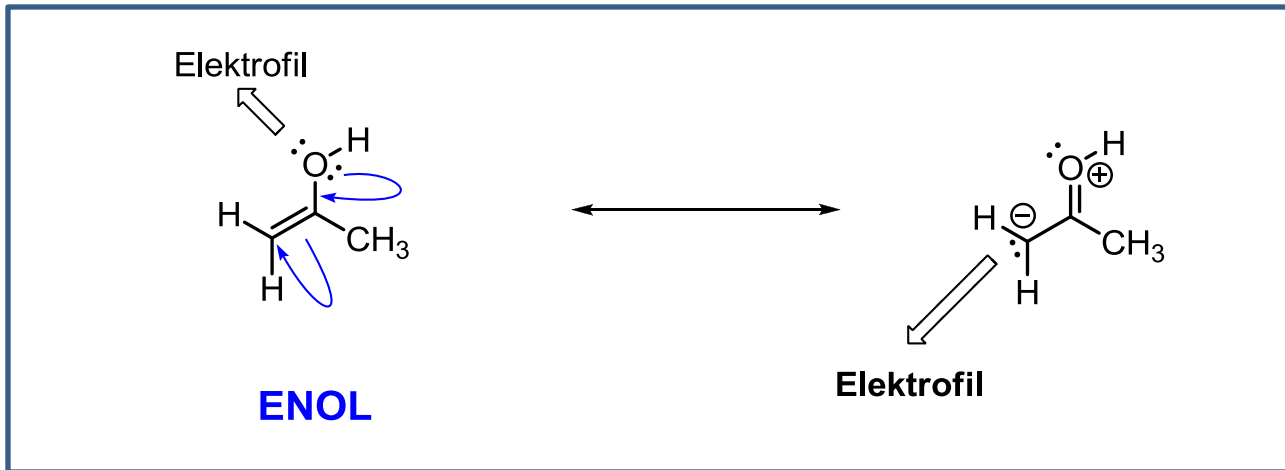


**konjugace
intramolekulární vodíková vazba**



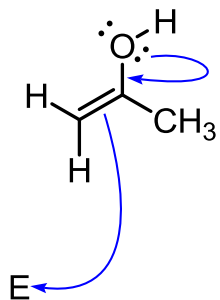
aromatický enol

ENOLY A ENOLÁTY JSOU NUKLEOFILNÍ

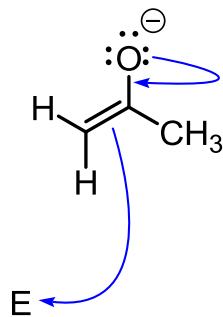


NENÍ DVOJNÁ VAZBA JAKO DVOJNÁ VAZBA

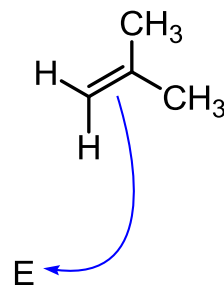
ENOL



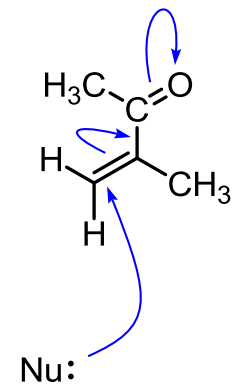
ENOLÁT



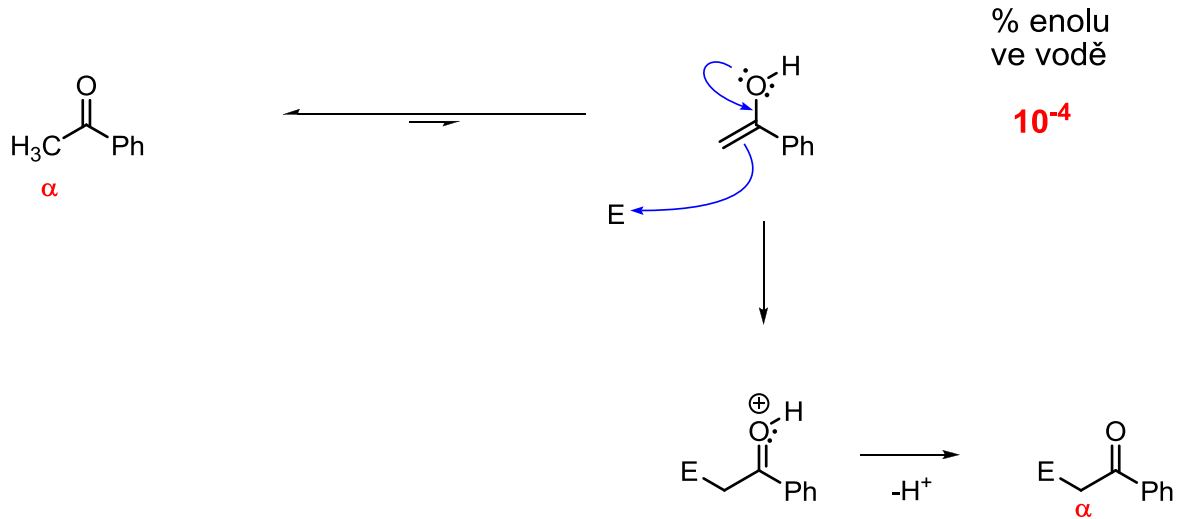
IZOLOVANÁ
DVOJNÁ VAZBA



α,β -NENASYCENÝ
KARBONYL

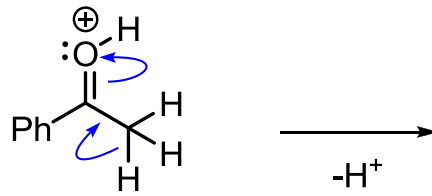
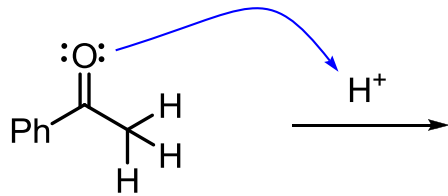


I MINORITNÍ SLOŽKA ROVNOVÁŽNÉ SMĚSI MŮŽE REAGOVAT (TŘEBAŽE POMALU)

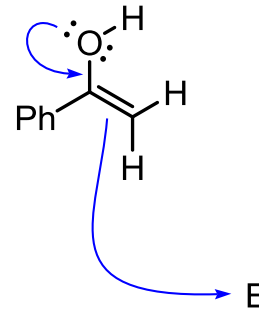


JAK ZVÝŠIT KONCENTRACI ENOLU/ENOLÁTU?

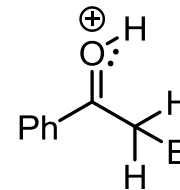
Kyselá katalýza



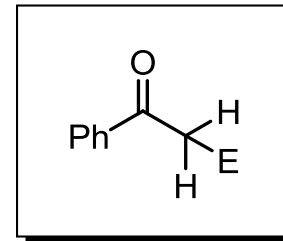
ENOL



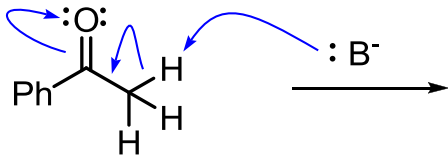
↓



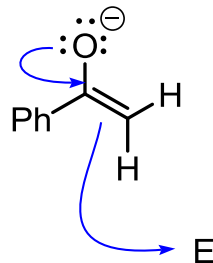
↓



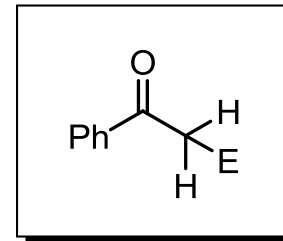
Bazická katalýza



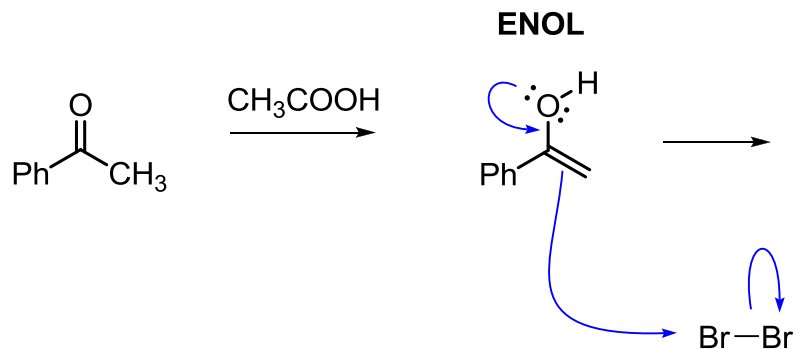
ENOLÁT



→



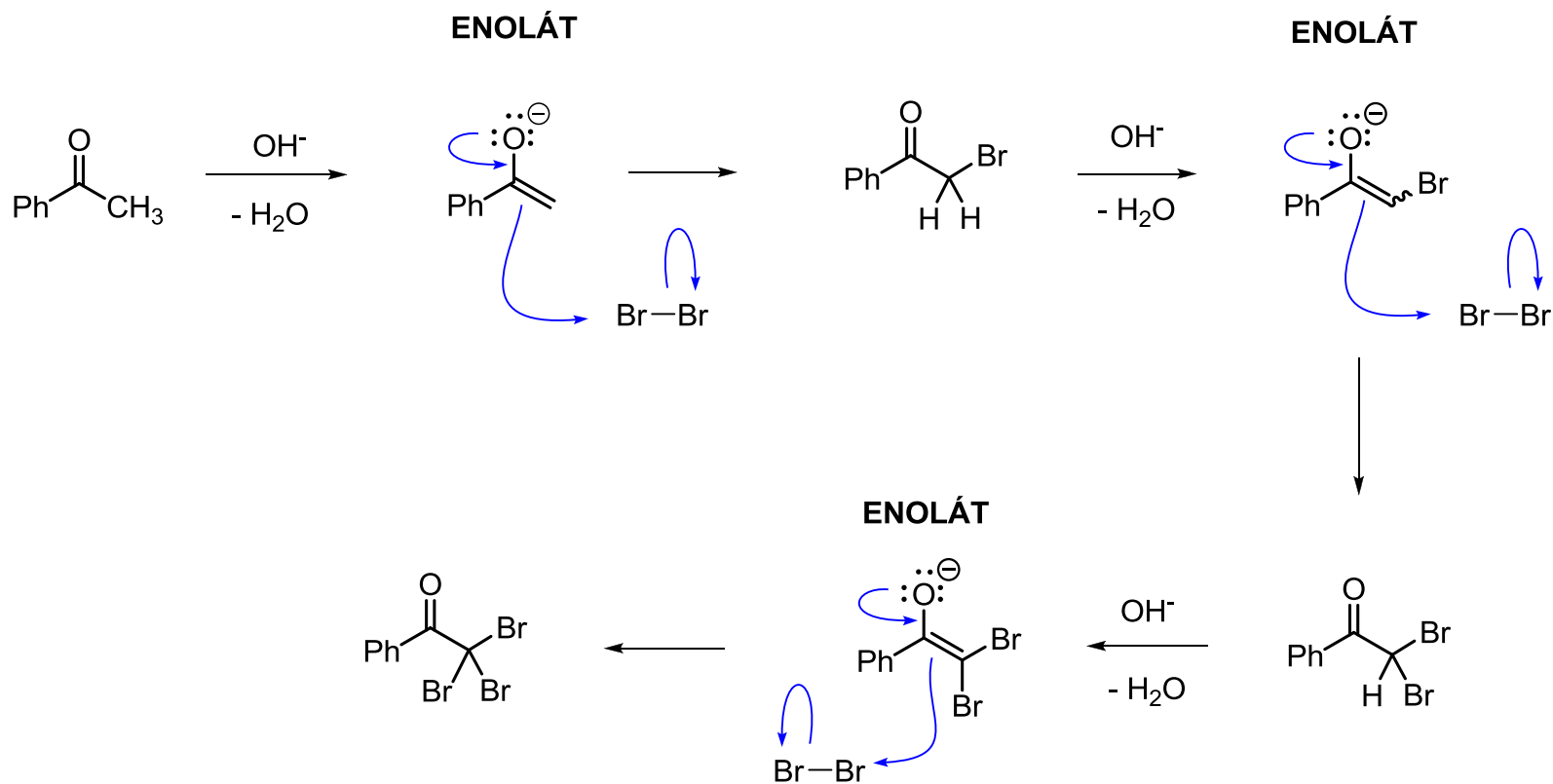
Kysele



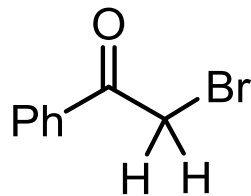
HALOGENACE

MONOHALOGENACE

Bazicky

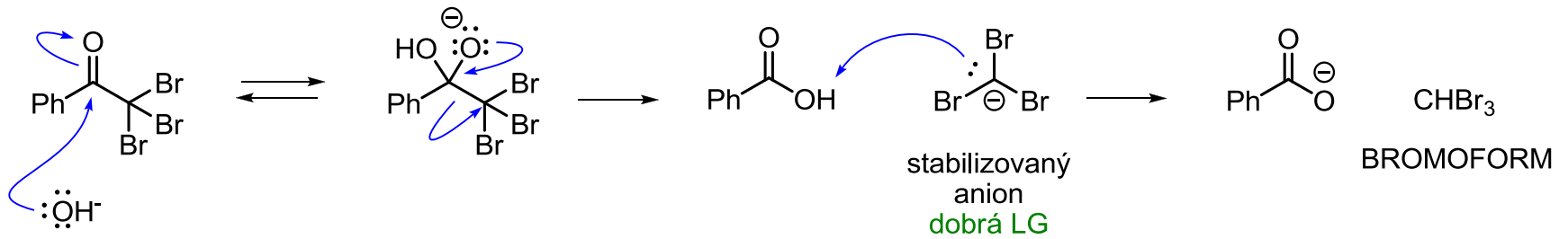


BAZICKY KATALYZOVANÁ HALOGENACE



- Halogenací alfa-polohy se (díky indukčnímu efektu) atomy vodíku, které zůstávají v této poloze, **stávají kyselejšími**.
- Je-li ve směsi **přebytek** halogenu, dojde k **úplné halogenaci** alfa polohy.
- Použijeme-li 1 ekvivalent halogenu, často získáme směs mono-, di- a trihalogenovaného produktu.
- Chceme-li do alfa polohy dostat jeden atom halogenu, je lepší kysele katalyzovaná reakce.

HALOFORMOVÁ REAKCE



srovnáme s podobnou reakcí:

