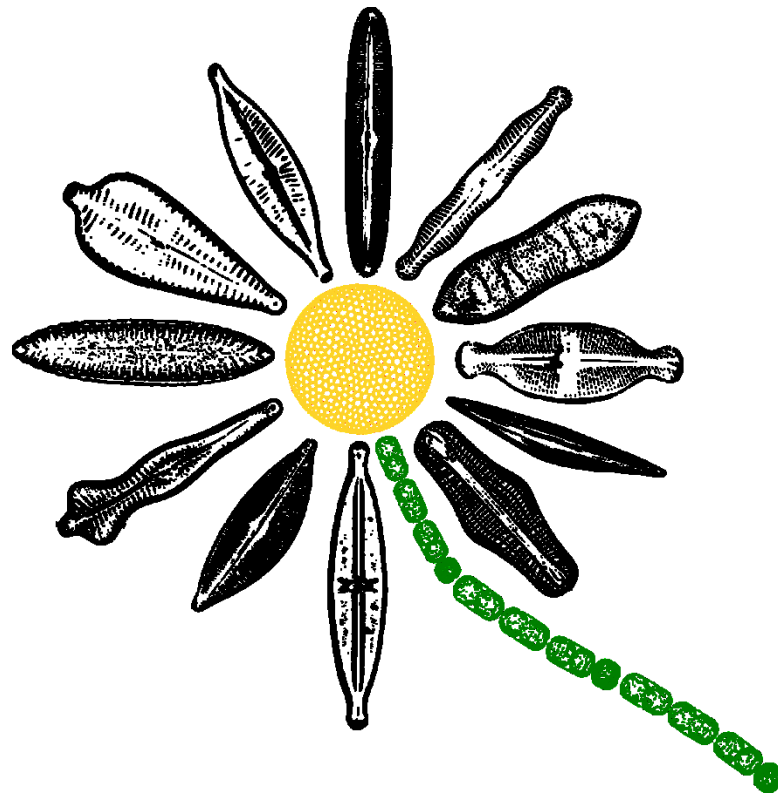


Rozsivky
Třída Bacillariophyceae

Zelené řasy
Třída Chlorophyceae

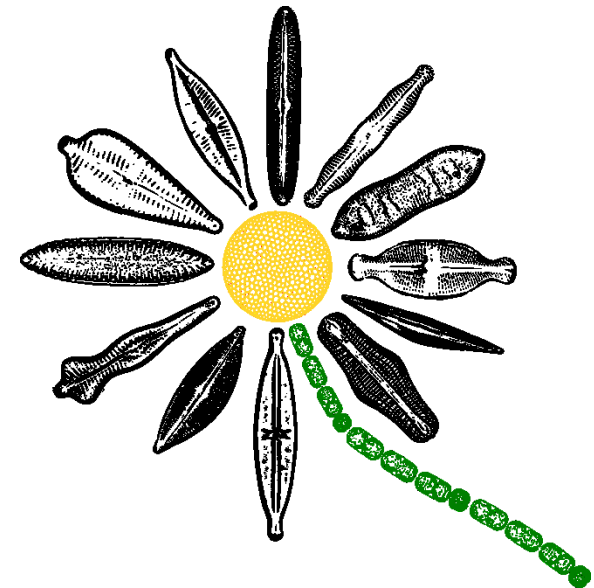


Oddělení Heterokontophyta (Stramenopila)

- Fotoautotrofní řasy
- Pleuronematický bičík (pohybový)
- Akronematický bičík
- Chromatofory se 4 membránami
- Chlorofyl a, c
- Fukoxantin, vaucheriaxantin
- Olej, polyfosfátová zrnka – volutin

Třídy:

- **Bacillariophyceae**
- Chrysophyceae
- Xanthophyceae
- Phaeophyceae



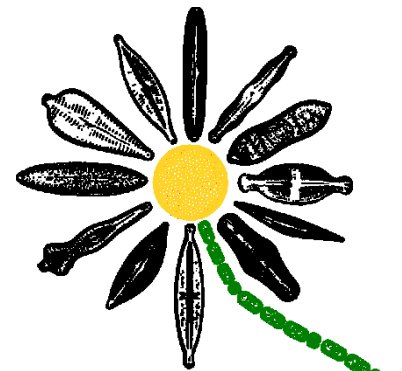
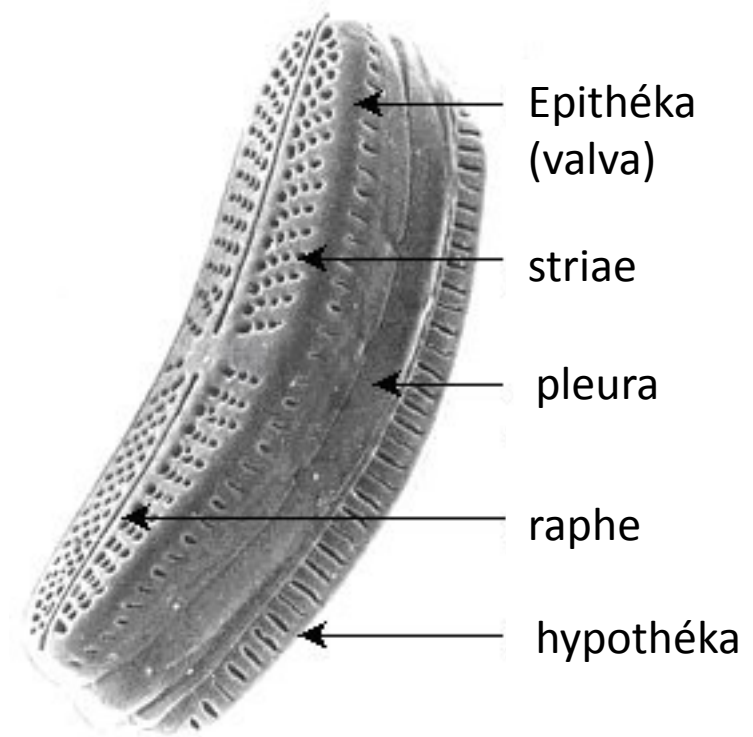


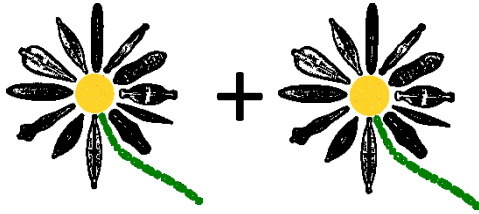
Obecná charakteristika

- Jednobuněčné
- Převážně vodní
- Žijící jednotlivé či v koloniích
- Dvoudílná křemitá frustula
- Diatotepin
- Polymer SiO_2
- Hnědé chloroplasty
- Chlorofyly a, c_1, c_2, c_3
- Xanthofyly - **fukoxantin**,
- Chrysolaminaran, olej
- Diktyozomy –produkce slizu a polysacharidů
- Pleuronematický bičík - gamety
- Diplontní životní cyklus
- Diatomit (křemelina)

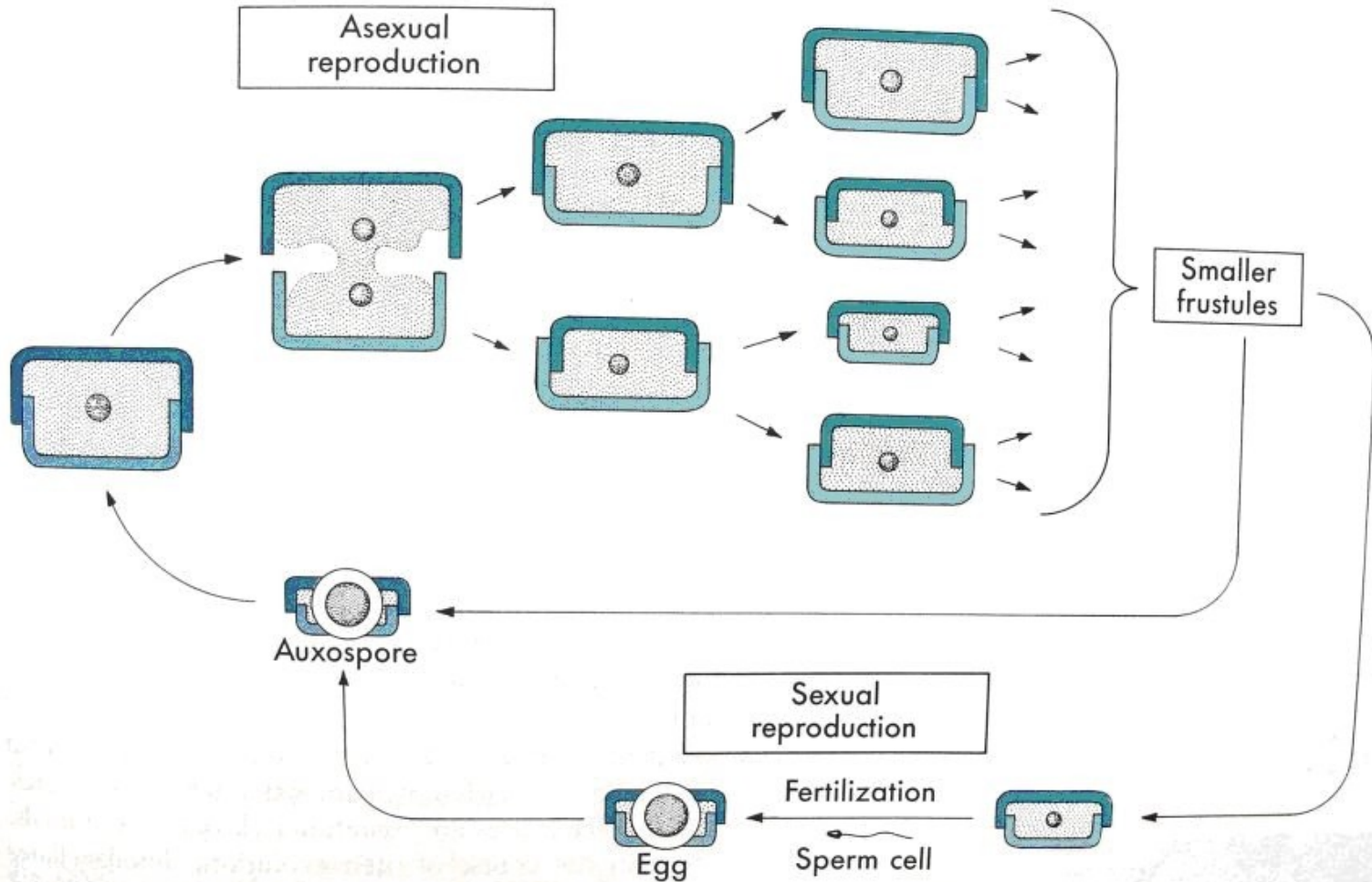
Morfologie

- Schránka- frustula
- Epithéka
- Hypothéka
- Valva
- Pleura
- Raphe
- Striae
- Centrální nodulus
- Radiálně souměrné – Centrické
- Dvoustraně souměrné – Penátní

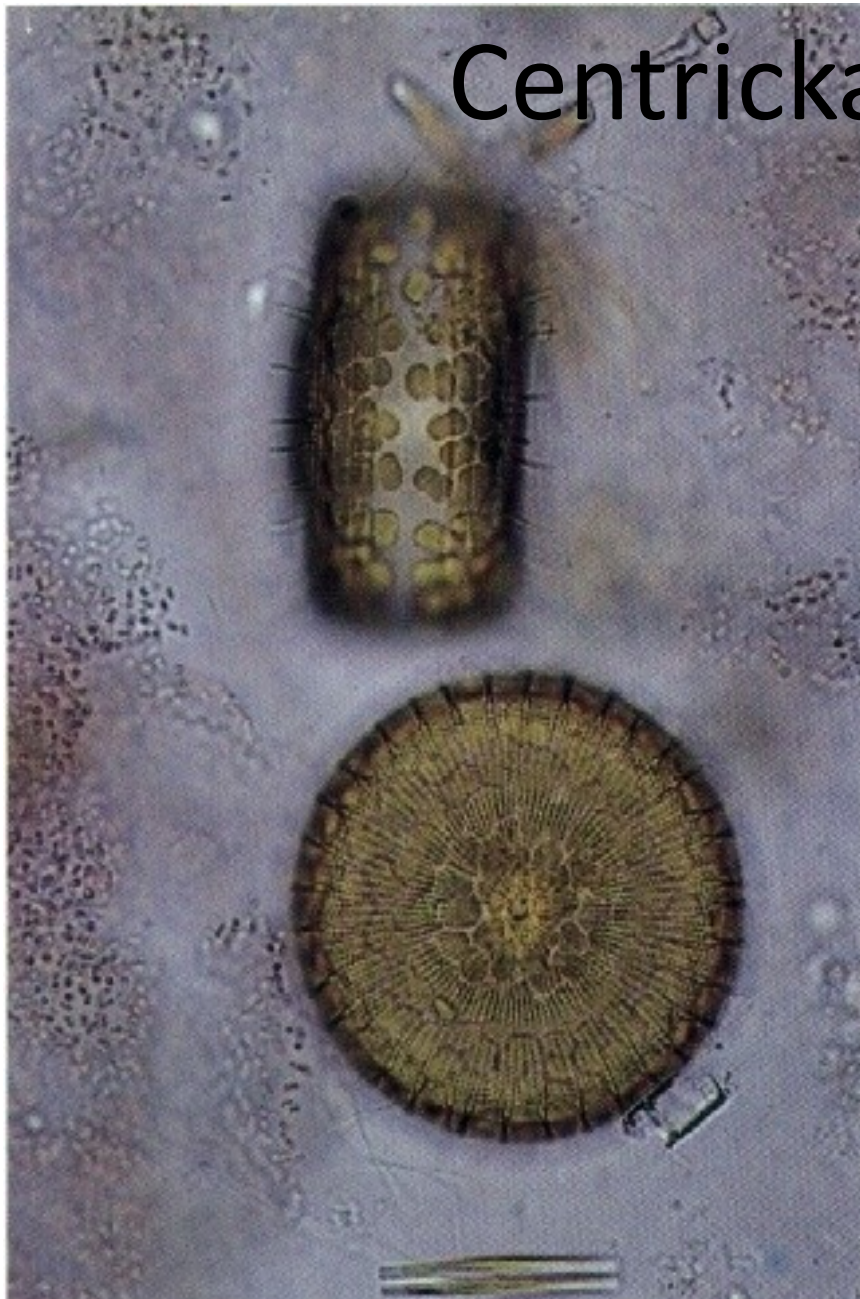




Rozmnožování

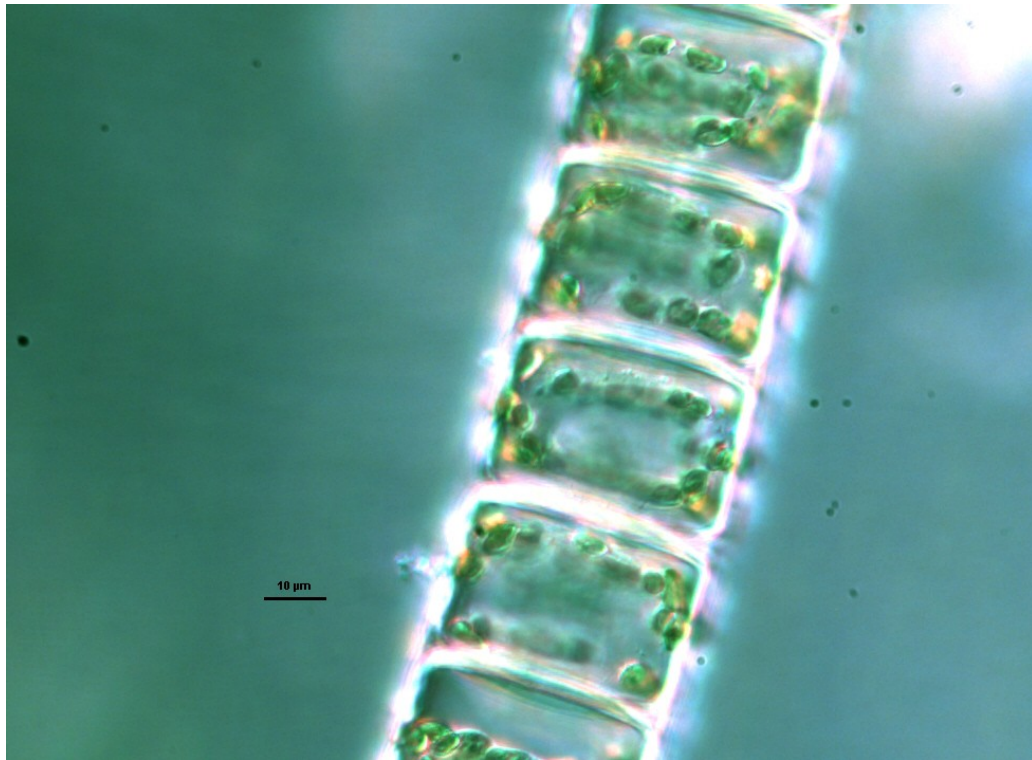


Centrická rozsivka



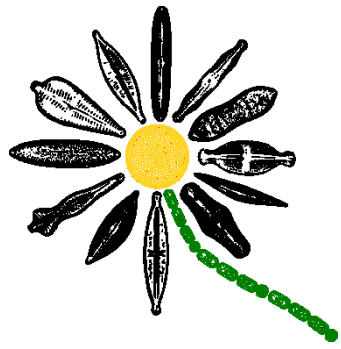
Stephanodiscus sp.

Odd.: Heterokontophyta Třída: Bacillariophyceae
Podtřída: Coscinodiscophycidae Řád: Coscinodiscales



Melosira sp.





Cyclotella sp.



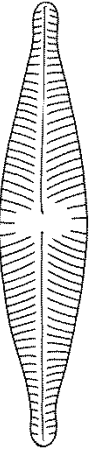
Nativní preparát



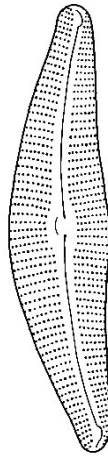
Melosira



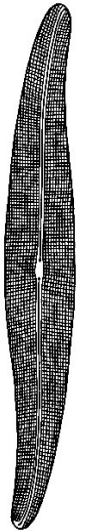
Navicula



Cymbella

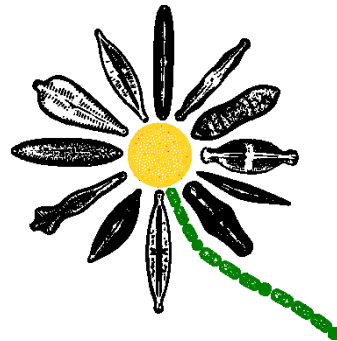
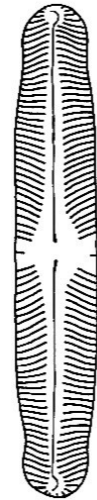
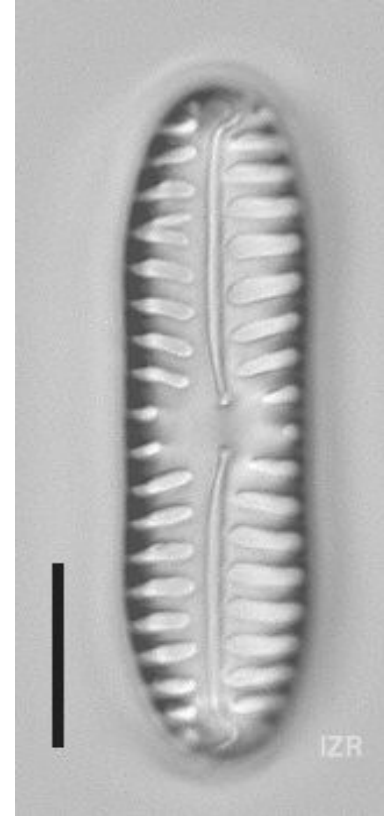
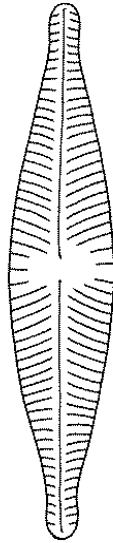
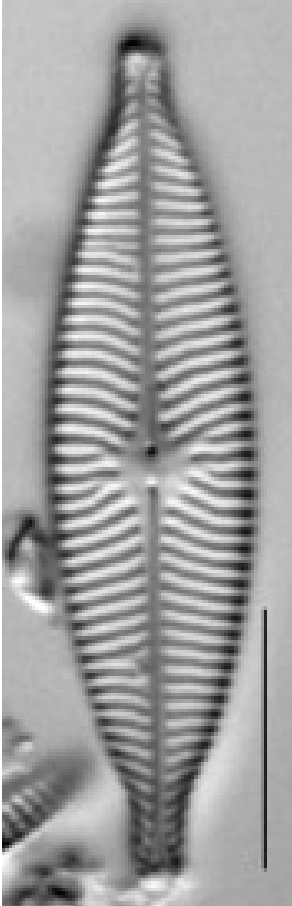


Gyrosigma

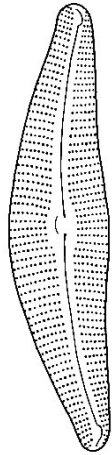
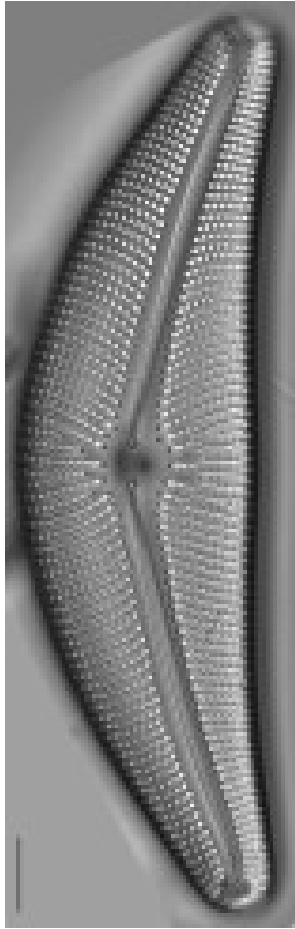


Navicula sp.

Pinnularia sp.



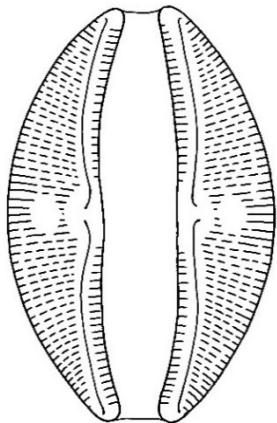
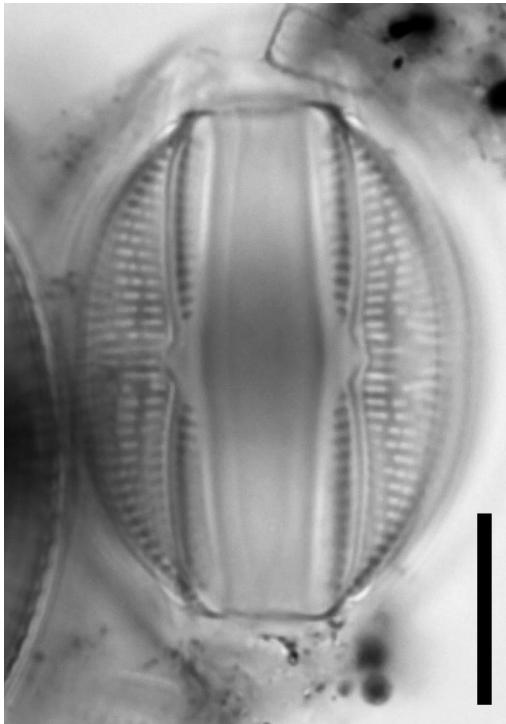
Cymbella sp.



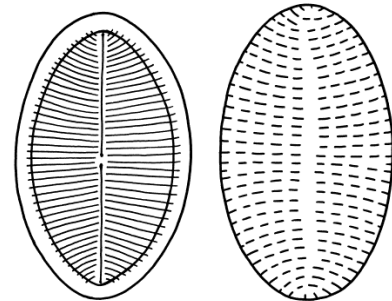
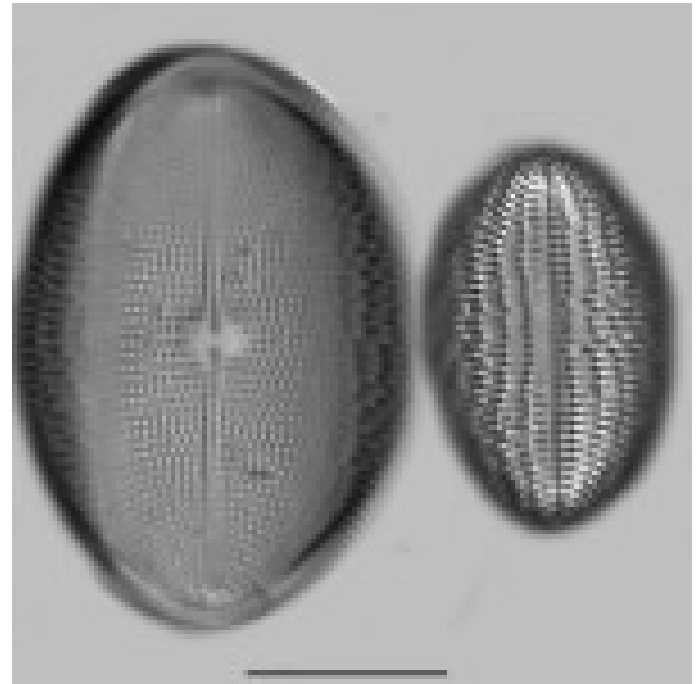
Gyrosigma sp.



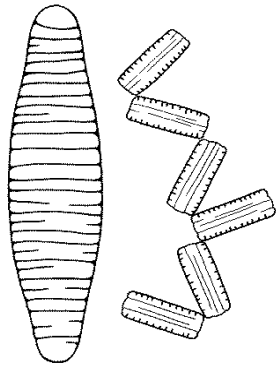
Amphora sp.



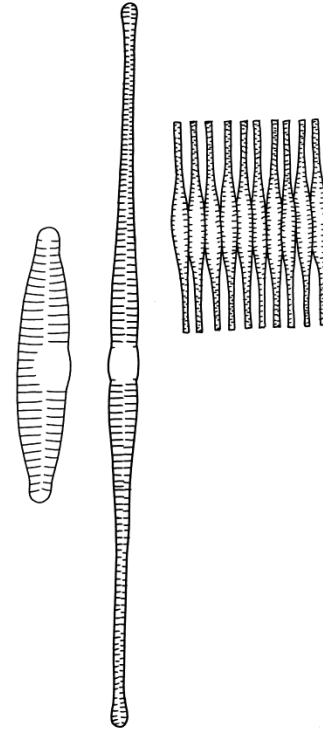
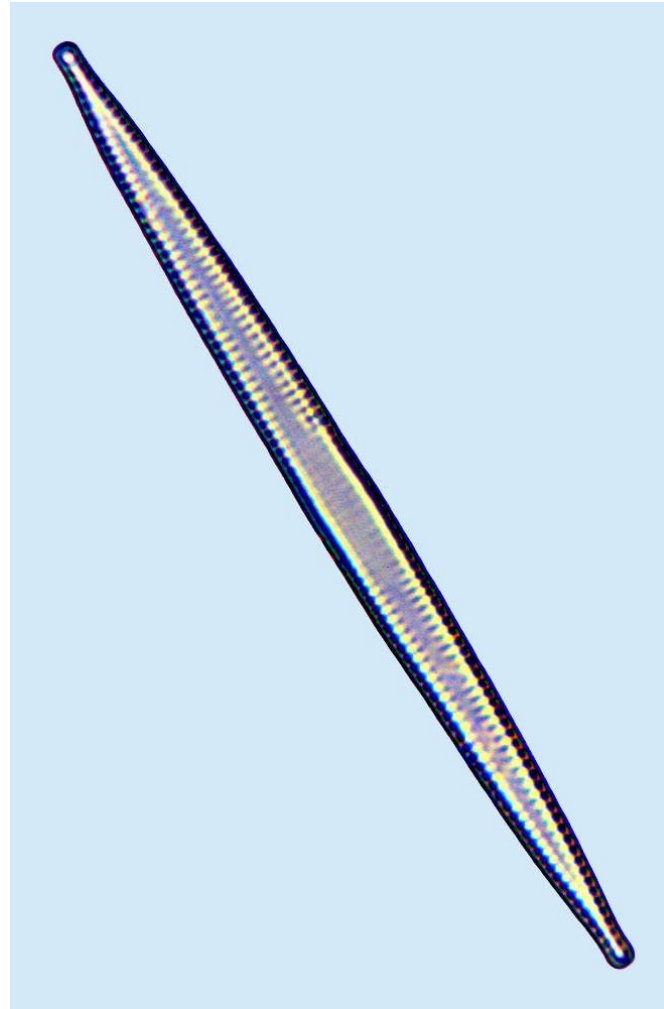
Cocconeis sp.



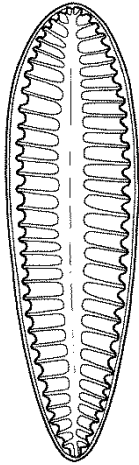
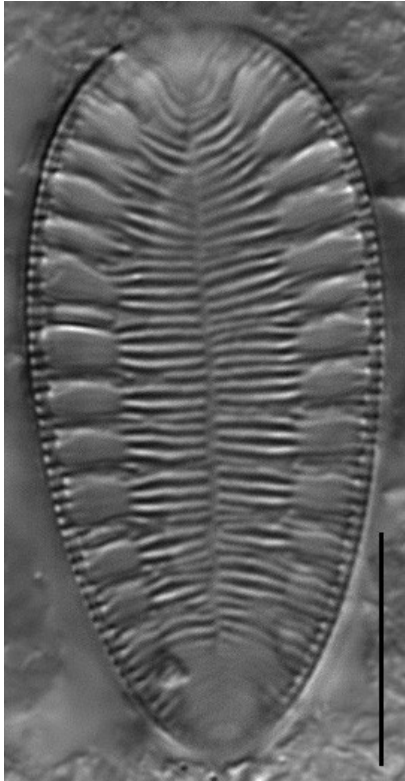
Diatoma sp.



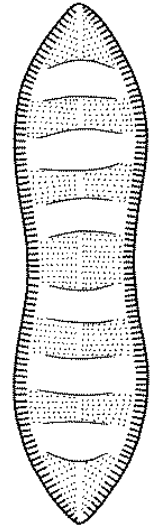
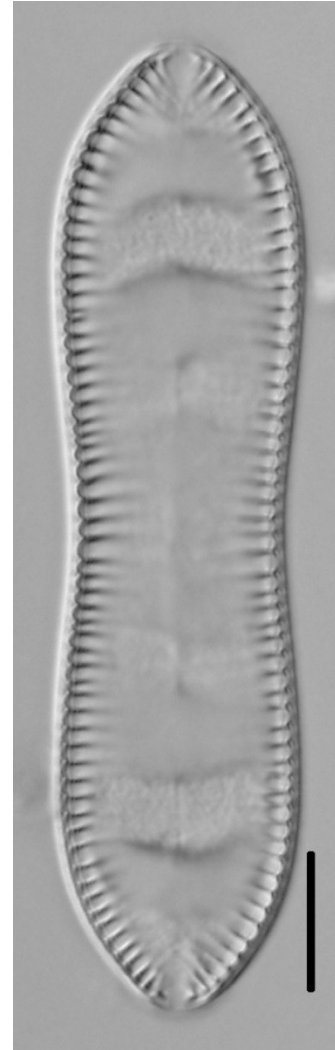
Fragilaria sp.



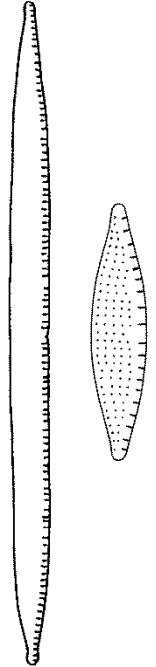
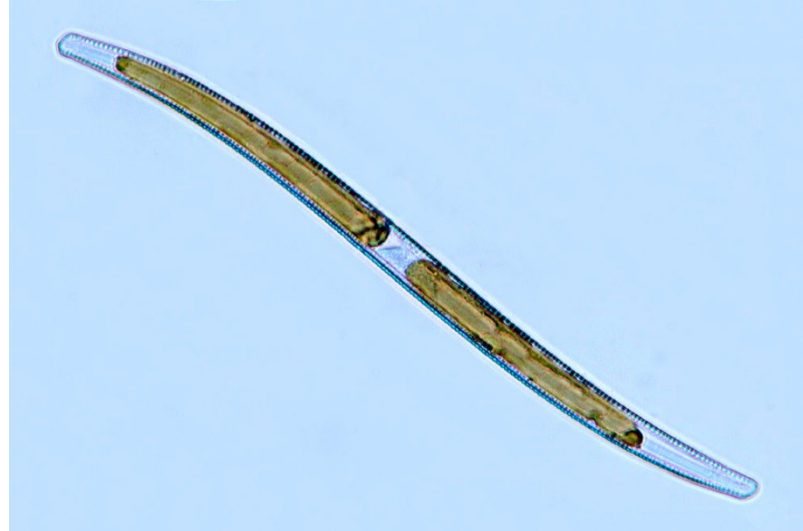
Surirella sp.



Cymatopleura sp.



Nitzschia sp.



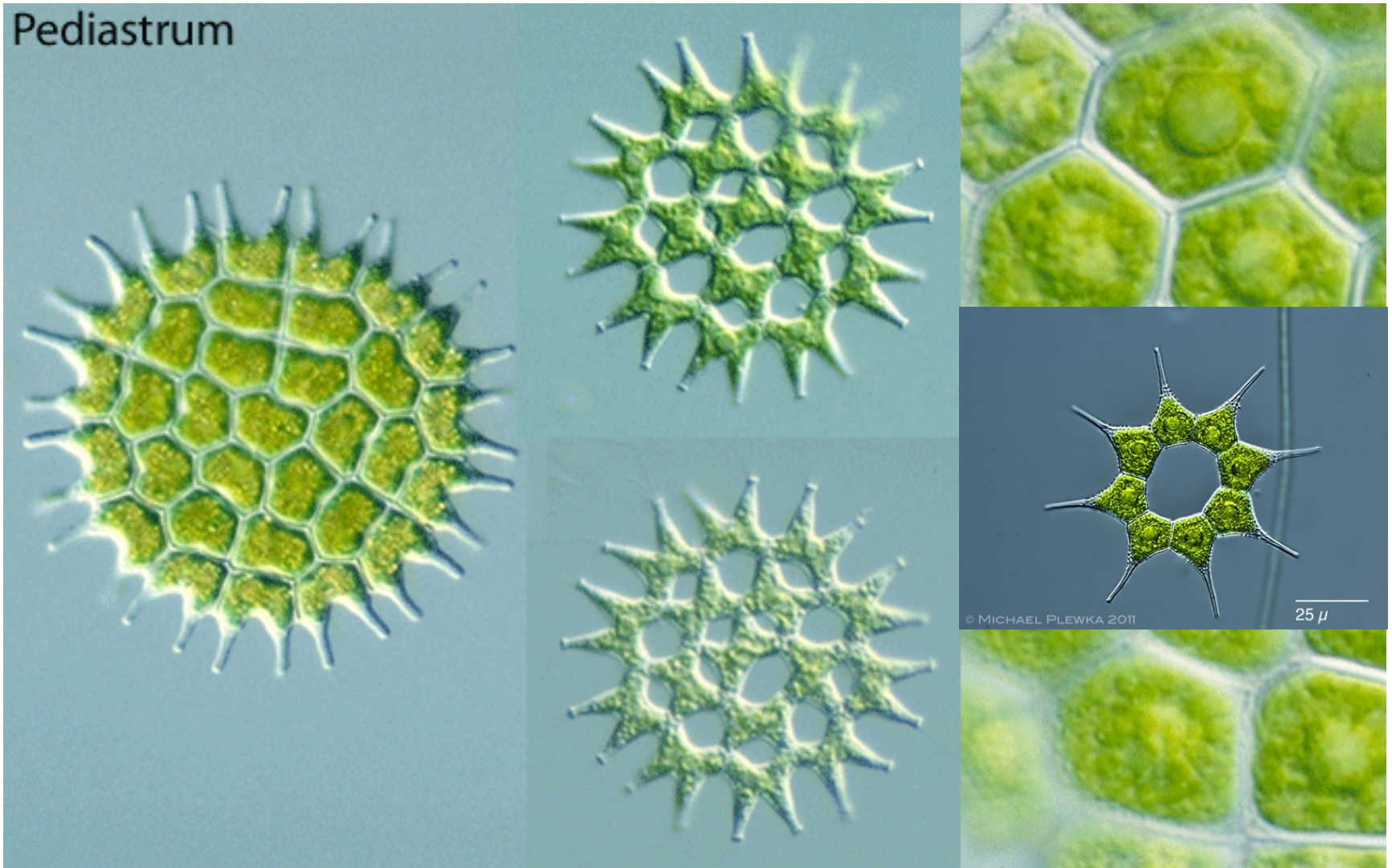
Odd.: Chlorophyta Třída: Chlorophyceae



Scenedesmus sp.

Odd.: Chlorophyta Třída: Chlorophyceae

Pediastrum



All after Entwisle et al. (1997)

Pediastrum sp.

Objekty

Třída Bacillariophyceae:

Centrické: **Melosira** (kolonie z pleurálního pohledu)

Penátní s raphe na obou valvách: **Navicula**, **Gyrosigma**, *Pinnularia*, *Cymbella*, *Amphora*

Penátní s raphe na jedné valvě: *Cocconeis*

Penátní bez raphe: *Diatoma*, *Fragilaria*

Penátní s kanálkovou raphe: *Surirella*, *Cymatopleura*, *Nitzschia*, *Hantzschia*

Melosira, Navicula, Gyrosigma + 4 další

Třída Chlorophyceae:

Pediastrum (cenobium)

Scenedesmus (cenobium)

Děkuji za pozornost!

