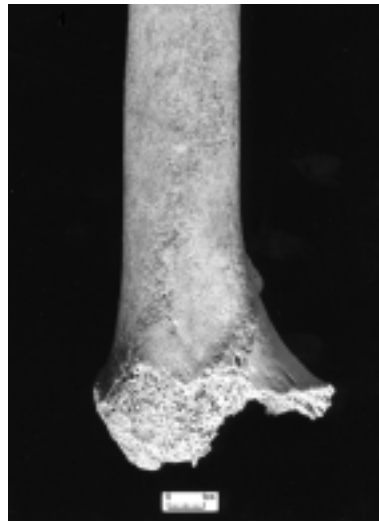




*Grade 0: Surface morphology clearly visible with fresh appearance to bone and no modifications*



*Grade 1: Slight and patchy surface erosion (in this case by root action)*



*Grade 2: More extensive surface erosion (by root action) than grade 1 with deeper surface penetration*



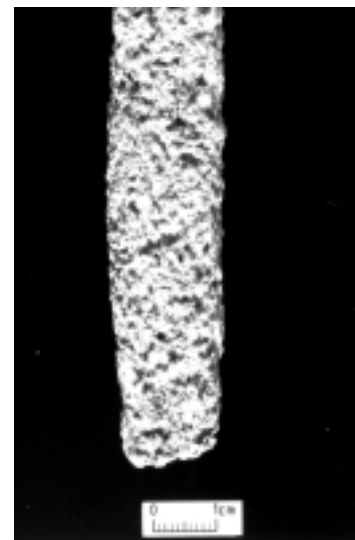
*Grade 3: Most of bone surface affected by some degree of erosion (by root action); general morphology maintained but detail of parts of surface masked by erosive action.*



*Grade 4: All of bone surface affected by erosive action (in this cases predominantly root activity); general profile maintained and depth of modification not uniform across whole surface.*



*Grade 5: Heavy erosion (in this case by root action) across whole surface, completely masking normal surface morphology, with some modification of profile.*



*Grade 5+: As grade 5 but with extensive penetrating erosion resulting in modification of profile*

*Figure 6 Grades for recording erosion/abrasion to human bone (Photographs by Elaine Wakefield, Wessex Archaeology)*