

DR. GABRIEL SANGÜESA-BARREDA (Orcid ID : 0000-0002-7722-2424)

DR. ULF BÜNTGEN (Orcid ID : 0000-0002-3821-0818)

DR. JESUS JULIO CAMARERO (Orcid ID : 0000-0003-2436-2922)

DR. GIANLUCA PIOVESAN (Orcid ID : 0000-0002-3214-0839)

Article type : Primary Research Articles

*Global Change Biology*

Article type: Primary Research Articles

## **Climate-human interactions contributed to historical forest recruitment dynamics in Mediterranean subalpine ecosystems**

Gabriel Sangüesa-Barreda<sup>1\*</sup>, Jan Esper<sup>2</sup>, Ulf Büntgen<sup>3,4,5,6</sup>, J. Julio Camarero<sup>7</sup>, Alfredo Di Filippo<sup>8</sup>, Michele Baliva<sup>8</sup> and Gianluca Piovesan<sup>8</sup>

<sup>1</sup> EifAB-iuFOR, University of Valladolid, Campus Duques de Soria, 42004 Soria, Spain.

<sup>2</sup> Department of Geography, Johannes Gutenberg University, Mainz, Germany.

<sup>3</sup> Department of Geography, University of Cambridge, Cambridge CB2 3EN, UK.

<sup>4</sup> Swiss Federal Research Institute (WSL), 8903 Birmensdorf, Switzerland.

<sup>5</sup> Global Change Research Institute of the Czech Academy of Sciences (CzechGlobe), 603 00 Brno, Czech Republic.

<sup>6</sup> Department of Geography, Faculty of Science, Masaryk University, 613 00 Brno, Czech Republic.

<sup>7</sup> Instituto Pirenaico de Ecología (IPE-CSIC), Avda. Montañana 1005, Apdo. 202, 50192 Zaragoza, Spain.

This article has been accepted for publication and undergone full peer review but has not been through the copyediting, typesetting, pagination and proofreading process, which may lead to differences between this version and the [Version of Record](#). Please cite this article as [doi: 10.1111/GCB.15246](https://doi.org/10.1111/GCB.15246)

This article is protected by copyright. All rights reserved

<sup>8</sup> DendrologyLab, Department of Agriculture and Forest Sciences (DAFNE), University of Tuscia, Viterbo, Italy.

*Running title:* Climate-human interactions on forest dynamics

\*Corresponding author:

Gabriel Sangüesa-Barreda

Universidad de Valladolid, EiFAR-iuFOR

Campus Duques de Soria s/n, 42004 Soria, Spain.

E-mail address: gbsanguesa@gmail.com

Accepted Article

## Abstract

Long-term tree recruitment dynamics of subalpine forests mainly depend on temperature changes, but little is known about the feedbacks between historical land use and climate. Here, we analyse a southern European, millennium-long dataset of tree recruitment from three high-elevation pine forests located in Mediterranean mountains (Pyrenees, northeastern Spain; Pollino, southern Italy; and Mt. Smolikas, northern Greece). We identify synchronized recruitment peaks in the late 15<sup>th</sup> and early 16<sup>th</sup> centuries, following prolonged periods of societal and climate instability. Major European population crises in the 14<sup>th</sup> and 15<sup>th</sup> centuries associated with recurrent famines, the Black Death pandemic and political turmoil are likely to have reduced the deforestation of subalpine environments and caused widespread rewilding. We suggest that a distinct cold phase in the Little Ice Age around 1450 CE could also have accelerated the cessation of grazing pressure, particularly in the Pyrenees, where the demographic crisis was less severe. Most pronounced in the Pyrenees, the enhanced pine recruitment from around 1500–1550 CE coincides with temporarily warmer temperatures associated with a positive phase of the North Atlantic Oscillation. We diagnose that a mixture of human and climate factors has influenced past forest recruitment dynamics in Mediterranean subalpine ecosystems. Our results highlight how complex human-climate interactions shaped forest dynamics during pre-industrial times and provide historical analogies to recent rewilding.

## Keywords:

Dendroecology, *Pinus uncinata*, *Pinus heildreichii*, subalpine forests, tree rings, recruitment, ecological history, rewilding.

## Introduction

Alpine and subalpine ecosystems are particularly sensitive to temperature changes (Holtmeier & Broll, 2005). As a result, recent climate warming has led to tree encroachment and upward treeline shifts (Camarero & Gutiérrez, 2004; Camarero et al., 2017; Du et al., 2018; Esper & Schweingruber, 2004; Harsch, Hulme, McGlone, & Duncan, 2009; Kirilyanov et al., 2012). In many cases, along with rising air temperatures, a reduction in human pressure has also contributed to recent forest re-colonization (Ameztegui, Coll, Brotons, & Ninot, 2015; Camarero & Gutiérrez, 2007; Gehrig-Fasel, Guisan, & Zimmermann, 2007; Harsch et al., 2009; Körner, 2012; Vitali, Camarero, Garbarino, Piermattei, & Urbinati, 2017; Vitali et al., 2019). Unravelling current forest dynamics is challenging since the impacts of climatic and anthropogenic drivers are hard to distinguish due both to the absence of precise records (Piovesan et al., 2019a, 2019b) and the presence of cascading effects resulting from climate-human feedbacks (Buma, 2015). However, disentangling the strength of each driver is key to forecasting future changes in forest structure, composition and treeline shifts (Camarero et al., 2017; Carlson et al., 2014). In addition, historical legacy effects and tree longevity must be considered when estimating changes in the global carbon budget because old-growth forests (Wirth, Messier, Bergeron, Frank, & Fankhänel, 2009) represent long-term carbon pools (Büntgen et al., 2019; Körner, 2017).

Since the mid-Holocene, human pressure in mountain systems has resulted in extensive deforestation through forest clearing, fire and livestock grazing (Kaplan, Krumhardt, & Zimmermann, 2009), particularly important in historically human-modified areas such as the Mediterranean Basin (Blondel, 2006). In the Middle Ages alone, an estimated 50-70% of European forests were deforested (Navarro & Pereira, 2012). The Medieval Warm Period (hereafter MWP) provided the opportunity to establish an extensive farming system that exploited subalpine forests and alpine grasslands for grazing, inducing rapid deforestation and forest ecosystem degradation (Schoolman, Mensing, & Piovesan, 2018; Walsh et al., 2014). In the Pyrenees, human activity and landscape transformation increased significantly during the Middle Ages (Galop, Rius, Cugny, & Mazier, 2013), and grazing became the main economic resource (Fillat, García-González, Gómez, & Reiné, 2008; Pascua Echegaray, 2012). This is confirmed by high-elevation paleoecological records (above 2000 m a.s.l.), that, through drops in arboreal pollen levels and evidence of severe paleofires, reveal intense deforestations at local to regional scales (Ejarque, 2009; Leigh, Gragson, & Coughlan, 2016; Leunda et al., 2017; Miras, Ejarque, Riera Mora, Orengo, & Palet Martinez, 2015). In the Apennines (central Italy) extensive grazing promoted a landscape transformation from primary forests and secondary woodland to grassland as many settlements ascended into high-elevation environments (Mensing et al., 2013; Piovesan, Mercuri, & Mensing, 2018a; Schoolman et al., 2018), which is also supported by palynological studies from southern Italy (Florenzano, 2019). In

northern Greece, archaeological evidence points to pastoral exploitation of upland areas in the Pindus Mountains (Chang & Tourtelotte, 1993).

European societies were struck by severe famines, wars and recurrent pandemics such as the Black Death which decimated populations from the 14<sup>th</sup> to the early 15<sup>th</sup> century (Gottfried, 1983). These demographic crises potentially reduced or even reversed deforestation and land exploitation in certain periods (Navarro & Pereira, 2012). This possible reduction in detrimental human pressure on subalpine forests may have translated into a landscape-scale rewilding (i.e. a return to natural pre-anthropogenic dynamics), although it would only have been effective in the context of long-lasting warm temperatures to promote and enhance tree establishment (Zasada, Sharik, & Nygren, 1992). Improved climatic conditions would unbalance forest dynamics towards higher tree recruitment rates and lower mortality rates in contrast to the previous situation of low recruitment rates and high mortality or a combination of both as a result of grazing practices.

Subsequent to the MWP, during the Little Ice Age (hereafter LIA) from the 15<sup>th</sup>-19<sup>th</sup> centuries, climate shifted towards cooler and more unstable conditions (Esper et al., 2018). In the Mediterranean Basin, the LIA is associated with a weaker winter North Oscillation Index (NAO), beginning ca. at the middle of 15<sup>th</sup> century (Trouet et al., 2009). The societal implications of such noteworthy climate change towards increased variability are still uncertain, although climate will have inevitably affected a society that essentially relied on local farming and the exploitation of natural resources. During the coldest periods of the LIA, persistently low temperatures and late snow melting could have limited the grazing activities in the high-elevation belt, potentially a contributing factor in reducing deforestation (Galop et al., 2013; Piovesan et al., 2019a). Overall, these findings diagnose an inter-related mixture of human and climatic disturbances occurring simultaneously during this transient period from the 14<sup>th</sup> to 15<sup>th</sup> centuries, affecting historical forest dynamics.

In this article, we analyze potential climate and human impacts on the long-term tree recruitment in Mediterranean subalpine pine forests. Local temperature records have been shown to correlate with long-term tree establishment in the Pyrenees (Sangüesa-Barreda, Camarero, Esper, Galván, & Büntgen, 2018), but the wider significance of these findings, as well as the effects of historical human practices and the role of potential synoptic climatic drivers, have not been explored (but see Piovesan et al., 2019a). We take advantage of three unique tree-ring collections from ecotones in the Pyrenees (Gerber lake; north-eastern Spain; Büntgen et al., 2019, 2017; Büntgen, Frank, Grudd, & Esper, 2008; Esper et al., 2015, 2010; Sangüesa-Barreda et al., 2018), Pollino massif (southern Italy; Piovesan et al., 2019a) and Mt. Smolikas (northern Greece; Esper et al., 2020; Klippel et al., 2017). These massively replicated, high-elevation tree ring datasets have been used to reconstruct tree establishment dynamics over the last millennium. We

analyze tree establishment pulses in the 15<sup>th</sup> and 16<sup>th</sup> centuries as potential indicators of a previous human demographic crisis and consequent reduction in grazing in high-elevation forests. We also analyze how the beginning of the LIA and local temperature patterns may have influenced tree recruitment dynamics, and discuss potential associations with anthropogenic disturbance regimes. Even though the three Mediterranean high-elevation sites are fairly remote and the access requires long hikes, documental and proxy (paleoecology) records reconstruct periods of intense human pressure during the Middle Ages at local to regional scales.

## Material and methods

### *Sites of old-living trees and sampling strategy*

Lake Gerber (42.63°N, 0.99°E) is located in the "Aigüestortes i Estany de Sant Maurici" National Park, central Spanish Pyrenees (Fig. 1). The surrounding area of the lake includes open high-elevation Mountain pine (*Pinus uncinata* Ram.) forests up to the tree-line ecotone at ca. 2400 m a.s.l. Mountain pine is a long-lived (up to ca. 1000 years old), slow-growing and shade-intolerant conifer that prevails in subalpine environments in the Spanish Pyrenees (Camarero & Gutiérrez, 2004; Galván, Camarero, & Gutiérrez, 2014). Since 2005 and in diverse field campaigns, disc and core samples from 581 living and dead Mountain pine trees were collected (Büntgen et al. 2019, 2017, 2008; Esper et al., 2015, 2010; Sangüesa-Barreda et al., 2018). From this collection, 361 trees were sampled through wood discs, and 220 with increment cores. 37.9% of the sampled trees were living and 62.1% dead. Discs from well-preserved standing and fallen dead trees were sampled close to the tree base, whereas the wood cores were collected at 1.3 m height (Fritts, 1976). More details of the site and sampling strategy are given in Sangüesa-Barreda et al. (2018).

The Pollino massif is situated in southern Italy (39.94° N, 16.13° E) and it harbours open Bosnian pine (*Pinus heldreichii* H. Christ) forests between ca. 1675 and 2267 m a.s.l. Bosnian pine is a subalpine shade-intolerant conifer with a scattered distribution in the Pollino massif and Balkans. In Pollino, Bosnian pines include the so-called *Italus*; at 1230 years currently the oldest known tree in Europe (Piovesan et al., 2018b). The high-elevation individuals in the treeline ecotone are restricted to extensive rocky and remote areas (Piovesan et al., 2019b). Between 2013 and 2016, wood cores from 177 large (with diameter at breast height, DBH > 50 cm) living trees were collected, 120 of them including the stem pith. Further details on this site can be found in Piovesan et al. (2019a).

Mt. Smolikas (40.10° N, 20.93° E) is the highest peak in the Pindus range in northern Greece. The treeline ecotone is formed by old-living Bosnian pines (Esper et al., 2020), with ages up to 1075 years such as the notable tree named *Adonis* (Konter, Krusic., Trouet, & Esper, 2017). Bosnian pines are located

between 2000 and 2200 m a.s.l. in an open forest with shallow soils. Over four field campaigns since 2013, 388 trees were sampled (208 living and 180 dead trees). Disc samples from dead standing and fallen trees were taken as close as possible to the root collar. Further information on this site can be found in Esper et al. (2020).

#### *Tree-ring analysis and tree recruitment dynamics*

All samples were air-dried and polished until tree-rings were unmistakably distinguishable. Tree-ring width (TRW) was measured at a resolution of 0.01 mm using LINTAB measuring systems and a CTRMD (Computer Controlled Tree Ring Measure Device; Aniol, 1987) controlled by the software CATRAS (Aniol, 1983). TRW data were visually (Stokes & Smiley, 1996) and statistically (Holmes, 1983) cross-dated. We established the germination year of each tree by resolving the calendar date of its pith. In those cases where the pith was missing on a sample, a pith-offset was estimated by considering the width and curvature of the innermost rings. For the trees sampled using increment cores at 1.3 m height, we added 20 years to the stem age to estimate the tree age at the root collar according to Piovesan et al. (2019a).

We assessed the long-term recruitment dynamics by reconstructing individual tree germination dates. The tree recruitment data were grouped into 30-year classes to mitigate potential uncertainties in the process of age estimation (Piovesan et al., 2019a; Sangüesa-Barreda et al., 2018), but with enough temporal resolution for assessing multi-centurial recruitment trends. Finally, we rearranged the recruitment data considering diameter thresholds (small vs. large trees in each site) and the tree status (living vs. dead trees).

To enhance the comparability between the recruitment trends of each pine population, we standardized the frequency of recruitments grouped into 30-year classes using the mean and the standard deviation of the well-replicated AD 1000–1900 period. Values higher and lower than zero represent high and low recruitment rates, respectively.

#### *Human population trends*

We gathered information on demographic trends in each of the regions of the three sites by considering the new high-resolution dataset of urban population (Reba, Reitsma, & Seto, 2016). We selected the closest cities that contained information of the period 1200–1800 CE. For Gerber these are Zaragoza and Barcelona, located at distances of 190 and 168 km respectively from the sampling site. For Pollino, we used Messina (195 km), and for Mt. Smolikas, Thessaloniki (155 km). Although the distance between the cities and the studied sites is quite substantial, the longer-term demographic trends detailed for these cities are likely to be representative at regional to inter-regional scales (Reba et al., 2016). In the case of

Pollino, we additionally used an Italian database of historical population since 1300 CE (Malanima, 2005). This repository contains information of demographic trends in relation to city size. We obtained the rural population by subtracting the urban population from the total population in southern Italy.

#### *Land use and grazing trends at site scale*

We used the KK09 Anthropogenic land use change index proposed by Kaplan et al. (2009). This dataset contains annually-resolved high-resolution time series of anthropogenic deforestation for all Europe and the period 1000 BC to AD 1850. The model integrates diverse information, such as climate and soils data and population density estimations. The land-use index is standardized from 0 to 1 and includes both cultivation and grazing. We considered the low and high uncertainty scenarios in past population estimations. The data were downloaded from Kaplan & Krunhardt (2018) PANGAEA repository considering a 5'x5' grid (ca. 85 km<sup>2</sup>). The study forests were located in the following grids: Gerber, 42.58-42.67° N, 0.92-1° E; Pollino, 39.92-40° N, 16.08-16.17° E; and Mt. Smolikas, 40.08-40.17° N, 20.92-21° E). The land-use index was extracted every 50 years during the AD 1100–1700 period. Since the model considers all major European ranges (Alps, Pyrenees and Carpathians) to be unusable due to climate limitations (Kaplan et al., 2009), the land-use index in Gerber (Pyrenees) was substantially underestimated. For this reason, we excluded this site from this analysis.

Additionally, we obtained the historical pasture area from the HYDE 3.1 dataset (Goldewijk, Beusen, Van Drecht, & De Vos, 2011). This is a spatially explicit global reconstruction (12,000 years) of grazing intensity based on the combination of satellite information and specific allocation algorithms. The model considers, among other factors: population density trends, distance to water, natural herbaceous area, soil suitability, topography and temperature. The database distinguishes between cropland and pasture activities, but we focused on the latter. The data were downloaded from the History Database of the Global Environment (<https://themasites.pbl.nl/tridion/en/themasites/hyde/index.html>) for the same 5'x5' grids and period used before. Due to the methodological differences in both datasets and the uncertainties associated with past estimations, we focused on long-term trends rather than absolute values (Gaillard et al., 2010; Goldewijk & Verburg, 2013).

#### *Climate forcings: North Atlantic Oscillation (NAO) oscillation, local temperature reconstructions, and climate-recruitment links*

The tree recruitment trends were compared to several yearly NAO index and temperature reconstructions: (i) a winter NAO reconstruction based on tree-rings and speleothems (Trouet et al., 2009), (ii) a NAO proxy based on stalagmite records (Baker, Hellstrom, Kelly, Mariethoz, & Trouet, 2015),



(iii) an ensemble of 48 annually resolved NAO proxy records combined through multivariate regressions (Ortega et al., 2015), (iv) an evolving functional network analysis of different paleoclimate proxy records (Franke, Werner, & Donner, 2017), (v) a spring–summer temperature reconstruction based on tree-ring maximum latewood density data (MXD) from the Gerber site (Büntgen et al., 2017), and (vi) a long-term summer temperature reconstruction derived from MXD data from the Mt. Smolikas site (Esper et al., 2020). The different NAO reconstructions were low-pass filtered using a 30-year moving average to allow their comparability.

In order to relate tree recruitment and local climate, we used the methodology proposed by Szeicz & MacDonald (1995). Because of the absence of climate reconstructions in Pollino, we restricted the analysis to Gerber and Mt. Smolikas. We fitted power functions to the frequency of recruitments grouped into 30-year classes as the best predictors of long-term recruitment trends (Sangüesa-Barreda et al., 2018). We focused on the AD 1300–1800 period when the peak of tree recruitment occurred. We selected the power function which provided the highest amount of explained variance. In Mt. Smolikas we did not consider recent tree recruitment, as very young trees were not sampled, and so we used the same power function in both sites. Finally, the residuals of the fitted functions were related to reconstructed local temperature.

## Results

We identified a period of high intensity tree recruitment in the late 15<sup>th</sup> and early 16<sup>th</sup> centuries, although this was most notable in Pollino and Mt. Smolikas (Fig. 2). This period of high recruitment rates was detected from tree samples regardless of species (*P. uncinata* or *P. heldreichii*), diameter (small or large trees) and current life status (living or dead trees).

Regarding the regional human population fluctuations in the three regions (north-eastern Spain, southern Italy and northern Greece), we detected a drop in the population size in the 14<sup>th</sup> and 15<sup>th</sup> centuries, especially in southern Italy and northern Greece which reached a historical low around 1400–1450 CE (Fig. 3). In southern Italy, the trend was similar whether considering the urban population (Messina city) or the rural population, although the drop in human population was more prolonged in rural areas. By contrast, human population in the Spanish cities closest to the Pyrenees did not experience such a decline. At site scale, we observed a common drop in the land-use index and the grazing area in 1400 CE (Fig. 4). The land-use change hiatus occurred after 150–200 years (ca. 1150–1350 CE) of increasing anthropogenic activity and lasted for 100–150 years (ca. 1350–1500 CE). After the 1500s the local land use began to increase while tree recruitment rates decreased.

A colder phase of the LIA, recorded in Gerber and Mt. Smolikas as severe drops in temperature, was also linked to drops in NAO in 1450 CE (Fig. 5a). However, the peak in tree recruitment (late 15<sup>th</sup> and early 16<sup>th</sup> centuries) overlapped with relatively warm phases between cold intervals associated with the LIA in Gerber (Fig. 5b,c). These warm conditions concurrent with positive NAO phases were more relevant after the 1500s. By contrast, in Mt. Smolikas low temperatures prevailed during the peak in tree recruitment. Finally, the climate-recruitment relationships in the AD 1300–1800 period were positive but not significant in Gerber (Spearman correlation coefficient,  $r_s = 0.40$ ;  $p = 0.10$ ), and negative and significant in Mt. Smolikas ( $r_s = -0.55$ ;  $p < 0.05$ ; Fig. 5d).

## Discussion

Through a long-term temporal perspective of tree recruitment at time scales beyond the Industrial Era and based on three well-preserved high-elevation forests in the Mediterranean Basin, we identified a widespread and persisting peak of tree establishment in the late 15<sup>th</sup> and early 16<sup>th</sup> centuries. This similitude in tree establishment in mountain forests located thousands of kilometres away, points towards regional and coupled human-climate interactions as drivers of forest dynamics. However, region-specific differences are also evident and can be discussed in terms of different incidences of climate and human factors in Spain with respect to southern Italy and northern Greece. Consistent with our initial hypothesis, we found different pieces of evidence that illustrate interactions between historical human practices and climate changes that resulted in an apparent landscape rewilding in subalpine southern Europe ca. 500 years ago.

The high tree recruitment intensity found in the 15<sup>th</sup> and 16<sup>th</sup> centuries, that followed a period of lower recruitment associated with widespread human activity, is evidenced by numerous paleoecological records in the Pyrenees. The alpine lake Marboré in the central Pyrenees (2612 m a.s.l. and ca. 70 km distant from Gerber) captured a reduction in the arboreal pollen during the Middle Ages and high amounts of pine pollen around 500 BP (Leunda et al., 2017). These results are in line with paleoecological studies in the eastern Pyrenees (Bassa Nera; 1891 m a.s.l. and ca. 40 km distant from the study site; Garcés-Pastor et al., 2017), and the nearest records just 24 km distant from Gerber that showed strong reductions in the arboreal pollen from ca. the 11<sup>th</sup> to 14<sup>th</sup> centuries alongside macrocharcoal remains indicating active fire regimes (Estanilles peak bog; 2200 m.a.s.l.; Pérez-Olbiol et al., 2012). In a similar manner, the pine pollen concentration in the eastern pre-Pyrenees (Estanya lake; 670 m a.s.l. and ca. 70 km distant), reached minimum and maximum values in 1350 and 1430 CE, respectively (Morellón et al., 2011). On the other hand, in central Italy, our findings agree with paleoecological evidences in the Lungo lake (371 m a.s.l. and 400 km distant from the study site; Mensing et al., 2016; Piovesan et al., 2018a)

which captured steep drops in the arboreal pollen in the Medieval times and high tree pollen amounts starting from the 15<sup>th</sup> century. Indeed, the forest taxa pollen showed a significant inverse relationship with the Italian population trends (Piovesan et al., 2018a). In southern Greece, high-resolution sedimentary records from Lake Stymphalia showed large-scale erosion into the lake during the Middle Ages, suggesting an intensive use of the landscape (Seguin et al., 2019).

Before 1400 CE, despite the favourable climate context during the MWP through positive and lasting NAO phases (Fig. 5a), the three sites showed low establishment values corresponding to low recruitment rates, high mortality rates or both (Fig. 2). According to the significant correlations between tree recruitment and temperature shown in the Pyrenees (Sangüesa-Barreda et al., 2018), but also in other cold, high-elevation sites (e.g. Du et al., 2018; Kharuk, Im, Dvinskaya, & Ranson, 2010; Liang et al., 2016), warm and stable conditions should have resulted in high tree recruitment rates. In fact, in the Pyrenees, the association between tree establishment and temperature was more intense after the 1500s (Sangüesa-Barreda et al., 2018). During Medieval times, a high human pressure on subalpine ecosystems through grazing and surface fires could have reduced forest expansion. Wood decomposition rates and the species lifespan have limited available tree records from this time, but we identified a period of 150–200 years in the 13<sup>th</sup> and 14<sup>th</sup> centuries of increasing human land-use intensity (Fig. 4), and thus a decisive influence of human practices on mountain forest dynamics.

Regional human population fluctuations and land-use changes at a local scale showed analogous trends (Figs. 3 and 4), while those trends and the reported tree recruitment data were decoupled between the 14<sup>th</sup> and 16<sup>th</sup> centuries, suggesting a cause-effect relationship with a lag time coherent with reproductive biology of mountain pines (Figs. 2 and 4). In agreement with these ideas, the greater decline in human population in northern Greece was translated into the highest tree establishment rates. In Greece, the 14<sup>th</sup> and early 15<sup>th</sup> centuries were characterized by large-scale depopulation in rural areas associated with major plague outbreaks, wars and the invasion of the Ottoman Turks (Bintliff, 2012; Seguin et al., 2019). In Italy, population was especially affected by recurring devastating plagues, most notably the Black Death in the mid 1300s (Porter, 2009; Schoolman et al., 2018). The Pyrenean case could be different since the death-toll from the Black Death pandemic in the 14<sup>th</sup> century was lower than in the rest of Europe (Álvarez-Nogal & Prados de la Escosura, 2013), as reflected in the lower loss of urban population and a more moderate increase of tree establishment at this time (Figs. 2 and 3). Some palynological records from the northern slope of the Pyrenees suggest that the consequences of the late-medieval crisis were spatially heterogeneous (Galop et al., 2013). Despite the reported epidemics and social problems in some valleys, metallurgical activities could have maintained a strong pressure on local forests (Galop et al., 2013). However, our results indicate that this was not the case in remote, high-

elevation forests, since we detected a major change in grazing intensity on Gerber (Fig. 4). Nonetheless, the different methodologies and uncertainties in the estimations of past land use and grazing intensity suggest that the absolute values should be considered with caution, and that the long-term trends are a better indicator than inter-population comparisons (Gaillard et al., 2010; Goldewijk & Verburg, 2013).

We detected a lag of ca. 50 years between the historical human population low and the peak of tree recruitment (Figs. 2 and 3). After centuries of widespread impacts by grazing practices, high-elevation forests probably needed decades to restore stands with mature, reproductive trees in the landscape and the formation of disturbed soils capable of harbouring pine seedlings. Furthermore, widespread tree recruitment requires warm and stable climatic conditions over many years to produce enough viable seeds to promote tree recruitment (Esper & Schweingruber, 2004; Zasada et al., 1992), and depending on the scale of the deforestation, the majority of seeds would need to move long distances from their source. This theory is confirmed by the gradual increase in tree recruitment until it reached maximum rates in the late 15<sup>th</sup> and early 16<sup>th</sup> centuries. In agreement with this idea, the current rewilding of the subalpine environments following the cessation of traditional land use in the second half of the 20<sup>th</sup> century, is also showing a gradual conversion of subalpine grasslands to forests by increasing seedling recruitment (Vitali et al., 2017, 2019), analogous with the situation observed in the 15<sup>th</sup> century.

The LIA was associated with negative NAO phases and cold temperatures, with a significant cold phase ca. in 1450 CE (Fig. 3). The influence of the NAO in the Mediterranean Basin is not uniform, with a decreasing incidence eastward (Hurrell & Van Loon, 1997). Negative NAO phases are associated with abundant winter-spring precipitations (Hurrell, Kushnir, Ottersen, & Visbeck, 2003), which may have more relevance in the Pyrenees than in Greece. We speculate that the beginning of the LIA could have been a further contributing factor to the cessation of grazing activities in high-elevation forests, since the snowpack accumulation and the late snow melting associated with cold and lasting winters and springs could accelerate the abandonment of grazing. This may be particularly important in the Pyrenees, where winter snow precipitations should be higher during negative NAO phases and the drop in temperature stronger than in the East (Fig. 5). While the demographic crisis was less severe in this region, the climatic component could have been decisive in reducing the grazing pressure of mountain pastures, which is in line with what Galop et al. (2013) suggested. The peak in tree recruitment was associated with relatively warm decades during positive NAO phases between cold intervals due to the LIA (Fig. 5b,c). The warm temperature oscillation in the AD 1450–1550 period was especially marked in Gerber, suggesting a prominent role in this site. However, neither in Mt. Smolikas nor in Pollino, we found an increase in temperature important enough to uniquely explain the high recruitment intensity.

We detected similarities but also differences between other simultaneous processes of subalpine forest expansion and encroachment. In the Alps, pollen records reflected a reduction of the agro-pastoral activities during the 14<sup>th</sup> and 15<sup>th</sup> centuries as a result of military conflicts, recurrent famines and epidemics, and probably the first signs of the LIA (Walsh et al., 2014). However, at least in the Alps and in central France, the recuperation after the late-medieval crisis was faster, and in the 16<sup>th</sup> century the transhumance economy was completely restored and grazing impact was as severe as in other periods in history (Servera Vives et al., 2014; Walsh et al., 2014). In contrast, in southern Europe the impact of the late-medieval crisis was probably deeper and more lasting since we did not observe a total recovery of the previous land use rates until ca. 1600 CE. Indeed, our data suggest that the late-medieval crisis was slightly longer than the period reconstructed by land-use models, since the high rates of tree recruitment lasted up to ca. 1530 CE, while models showed an increase of the land use after the second half of the 15<sup>th</sup> century. This idea is in line with the fact that the drop of human population in rural areas was more prolonged than the reported in urban population.

In conclusion, the historical peak in tree recruitment observed in the three mountain forests of southern Europe Peninsulas did not match a global temperature maximum. We provide evidence that suggests the major role of complex climate-human interactions on mountain forest dynamics before the 1500s CE, especially in the central-western Mediterranean Basin. We identify a late Medieval – Renaissance period of climatic and anthropogenic changes that could be decisive in driving past forest dynamics. This period should be more intensely studied in the future since it could be a historical analogue to recent rewilding. The time interval since then and the longevity of the studied pine species may have allowed the current abundance of old individuals and remnants of old-growth forests in these remote, high-elevation sites (Wirth et al., 2016). In addition to other science disciplines such as paleoecology or archaeology, dendroecological reconstructions could improve our understanding of the historical landscape transformation of subalpine forest ecosystems at secular timescales.

#### **Acknowledgements**

GS-B is supported by a Spanish Ministry of Economy, Industry and Competitiveness Postdoctoral grant (FJCI 2016-30121; FEDER funds). GP, ADF and MB were partially funded by Pollino National Park and FISR-MIUR Italian Mountain Lab (CIPE 71/2016). UB was partly supported by the Czech Republic Grant Agency (#17-22102S and 18-11004S), and the SustES project – Adaptation strategies for sustainable ecosystem services and food security under adverse environmental conditions (CZ.02.1.01/0.0/0.0/16\_019/0000797). JJC acknowledges the support of the project RTI2018-096884-B-C31 (Spanish Ministry of Science).

#### **Data availability**

The data that support the findings of this study are available from the corresponding author upon request.

**Conflict of interests:** The authors declare no conflict of interests.

## References

- Álvarez-Nogal, C., & Prados de la Escosura, L. (2013). The rise and fall of Spain (1270–1850). *Economic History Review*, *66*, 1-37. <https://doi.org/10.1111/j.1468-0289.2012.00656.x>
- Ameztegui, A., Coll, L., Brotons, L., & Ninot, J.M. (2015). Land-use legacies rather than climate change are driving the recent upward shift of the mountain tree line in the Pyrenees. *Global Ecology and Biogeography*, *25*, 263–273. <https://doi.org/10.1111/geb.12407>
- Aniol, R.W. (1983). Tree-ring analysis using CATRAS. *Dendrochronologia*, *1*, 45–53.
- Aniol, R.W. (1987). A new device for computer assisted measurement of tree-ring widths. *Dendrochronologia*, *5*, 135-141.
- Baker, A.C., Hellstrom, J., Kelly, B.F.J., Mariethoz, G., & Trouet, V. (2015). A composite annual-resolution stalagmite record of North Atlantic climate over the last three millennia. *Scientific Reports*, *5*, 10307. <https://doi.org/10.1038/srep10307>
- Bintliff, J.L. (2012). The complete archaeology of Greece, from hunter-gatherers to the twentieth century AD. Blackwell-Wiley. Oxford, New York.
- Blondel, J. (2006). The "design" of Mediterranean landscapes: A millennial story of humans and ecological systems during the historic period. *Human Ecology*, *34*, 713–729. <https://doi.org/10.1007/s10745-006-9030-4>
- Buma, B. (2015). Disturbance interactions: Characterization, prediction, and the potential for cascading effects. *Ecosphere*, *6*, 1–15. <https://doi.org/10.1890/ES15-00058.1>
- Büntgen, U., Krusic, P.J., Piermattei, A., Coomes, D.A., Esper, J., Myglan, V.S., Kirilyanov, A.V., Camarero, J.J., Crivellano, A., & Körner, C. (2019). Limited capacity of tree growth to mitigate the global greenhouse effect under predicted warming. *Nature Communications*, *10*, 2171. <https://doi.org/10.1038/s41467-019-10174-4>
- Büntgen, U., Krusic, P.J., Verstege, A., Sangüesa-Barreda, G., Wagner, S., Camarero, J.J., Ljungqvist, F.C., Zorita, E., Oppenheimer, C., Konter, O., Tegel, W., Gärtner, H., Cherubini, P., Reinig, F., & Esper, J. (2017). New tree-ring evidence from the Pyrenees reveals Western Mediterranean climate variability since Medieval Times. *Journal of Climate*, *30*, 5295–5318. <https://doi.org/10.1175/JCLI-D-16-0526.1>
- Büntgen, U., Frank, D., Grudd, H., & Esper, J. (2008). Long-term summer temperature variations in the Pyrenees. *Climate Dynamics*, *31*, 615–631. <https://doi.org/10.1007/s00382-008-0390-x>
- Camarero, J.J., & Gutiérrez, E. (2004). Pace and pattern of recent treeline dynamics: Response of ecotones to climatic variability in the Spanish Pyrenees. *Climatic Change*, *63*, 181–200. <https://doi.org/10.1023/B:CLIM.0000018507.71343.46>

- Camarero, J.J., Linares, J.C., García-Cervigón, A.I., Batllori, E., Martínez, I., & Gutiérrez, E. (2017). Back to the future: the responses of alpine treelines to climate warming are constrained by the current ecotone structure. *Ecosystems*, *20*, 683–700. <https://doi.org/10.1007/s10021-016-0046-3>
- Camarero, J.J., & Gutiérrez, E. (2007). Response of *Pinus uncinata* recruitment to climate warming and changes in grazing pressure in an isolated population of the Iberian system (NE Spain). *Arctic, Antarctic, and Alpine Research*, *39*, 210–217. [https://doi.org/10.1657/1523-0430\(2007\)39\[210:ROPURT\]2.0.CO;2](https://doi.org/10.1657/1523-0430(2007)39[210:ROPURT]2.0.CO;2)
- Carlson, B.Z., Georges, D., Rabatel, A., Randin, C.F., Renaud, J., Delestrade, A., Zimmermann, N.E., Choler, P. & Thuiller, W. (2014). Accounting for tree line shift, glacier retreat and primary succession in mountain plant distribution models. *Diversity and Distributions*, *20*, 1379–1391. <https://doi.org/10.1111/ddi.12238>
- Chang, C., & Tourtellotte, P.A. (1993). Ethnoarchaeological survey of pastoral transhumance sites in the Grevena region, Greece. *Journal of Field Archaeology*, *20*, 249–264. <https://doi.org/10.1179/009346993791549192>
- Du, H., Liu, J., Li, M.-H., Büntgen, U., Yang, Y., Wang, L., Wu, Z., & He, H.S. (2018). Warming-induced upward migration of the alpine treeline in the Changbai Mountains, northeast China. *Global Change Biology*, *24*, 1256–1266. <https://doi.org/10.1111/gcb.13963>
- Ejarque, A., Julià, R., Riera, S., Palet, J.M., Orengo, H.A., Miras, Y., & Gascón, C. (2009). Tracing the history of highland human management in the eastern Pre-Pyrenees: An interdisciplinary palaeoenvironmental study at the Pradell fen, Spain. *Holocene*, *19*, 1241–1255. <https://doi.org/10.1177/0959683609345084>
- Esper, J., & Schweingruber, F.H. (2004). Large-scale treeline changes recorded in Siberia. *Geophysical Research Letters*, *31*, 1-5. <https://doi.org/10.1029/2003GL019178>
- Esper, J., Frank, D.C., Battipaglia, G., Büntgen, U., Holert, C., Treydte, K., Siegwolf, R., & Saurer, M. (2010). Low-frequency noise in  $\delta^{13}\text{C}$  and  $\delta^{18}\text{O}$  tree ring data: A case study of *Pinus uncinata* in the Spanish Pyrenees. *Global Biogeochemical Cycles*, *24*, 1-11. <https://doi.org/10.1029/2010GB003772>
- Esper, J., Konter, O., Krusic, P., Saurer, M., Holzkämper, S., & Büntgen, U. (2015). Long-term summer temperature variations in the Pyrenees from detrended stable carbon isotopes. *Geochronometria*, *42*, 53-59. <https://doi.org/10.1515/geochr-2015-0006>
- Esper, J., George, S.S., Anchukaitis, K., D'Arrigo, R., Ljungqvist, F.C., Luterbacher, J., Schneider, L., Stoffel, M., Wilson, R., & Büntgen, U. (2018). Large-scale, millennial-length temperature reconstructions from tree-rings. *Dendrochronologia*, *50*, 81–90. <https://doi.org/10.1016/j.dendro.2018.06.001>



- Esper, J., Klippel, L., Krusic, P.J., Konter, O., Raible, C.C., Xoplaki, E., Luterbacher, J., & Büntgen, U. (2020). Eastern Mediterranean summer temperatures since 730 CE from Mt. Smolikas tree-ring densities. *Climate Dynamics*, *54*, 1367–1382. <https://doi.org/10.1007/s00382-019-05063-x>
- Fillat, F., García-González, R., Gómez, D., & Reiné, R. (2008). Pastos del Pirineo. Consejo Superior de Investigaciones Científicas, Premios Félix de Azara, Diputación de Huesca. Madrid, 320 pp.
- Florenzano, A. (2019). The history of pastoral activities in S Italy inferred from palynology: A long-term perspective to support biodiversity awareness. *Sustainability*, *11*, 404. <https://doi.org/10.3390/su11020404>
- Franke, J.G., Werner, J.P., & Donner, R.V. (2017). Reconstructing Late Holocene North Atlantic atmospheric circulation changes using functional paleoclimate networks. *Climate of the Past*, *13*, 1593–1608. <https://doi.org/10.5194/cp-13-1593-2017>
- Fritts, H.C. (1976). Tree rings and climate. Academic Press, London.
- Gaillard, M.J., Sugita, S., Mazier, F. et al. (2010). Holocene land-cover reconstructions for studies on land cover-climate feedbacks. *Climate of the Past*, *6*, 483–499. <https://doi.org/10.5194/cp-6-483-2010>
- Galop, D., Rius, D., Cugny, C., & Mazier, F. (2013). A history of long-term human-environment interactions in the French Pyrenees inferred from the pollen data. In: Lozny, L. (ed.) Continuity and change in cultural adaptation to mountain environments. Studies in human ecology and adaptation 7. Springer, pp. 19–30. doi: 10.1007/978-1-4614-5702-2\_3.
- Galván, J.D., Camarero, J.J., & Gutiérrez, E. (2014). Seeing the trees for the forest: Drivers of individual growth responses to climate in *Pinus uncinata* mountain forests. *Journal of Ecology*, *102*, 1244–1257. <https://doi.org/10.1111/1365-2745.12268>
- Garcés-Pastor, S., Cañellas-Boltà, N., Pèlach, A., Soriano, J-M., Pérez-Obiol, R., Pérez-Haase, A., Calero, M-A., Andreu, O., Escolà, N., & Vegas-Vilarrúbio, T. (2017). Environmental history and vegetation dynamics in response to climate variations and human pressure during the Holocene in Bassa Nera, Central Pyrenees. *Palaeogeography, Palaeoclimatology, Palaeoecology*, *479*, 48–60. <https://doi.org/10.1016/j.palaeo.2017.04.016>
- Gehrig-Fasel, J., Guisan, A., & Zimmermann, N.E. (2007). Tree line shifts in the Swiss Alps: Climate change or land abandonment?. *Journal of Vegetation Science*, *18*, 571–582. <https://doi.org/10.1111/j.1654-1103.2007.tb02571.x>
- Goldewijk, K.K., Beusen, A., Van Dreht, G., & De Vos, M. (2011). The HYDE 3.1 spatially explicit database of human-induced global land-use change over the past 12,000 years. *Global Ecology and Biogeography*, *20*, 73–86. <https://doi.org/10.1111/j.1466-8238.2010.00587.x>



- Goldewijk, K.K., & Verburg, P.H. (2013). Uncertainties in global-scale reconstructions of historical land use: An illustration using the HYDE data set. *Landscape Ecology*, 28, 861–877. <https://doi.org/10.1007/s10980-013-9877-x>
- Gottfried, R.S. (1983). *The Black Death: natural and human disaster in Medieval Europe*. Free Press, New York. ISBN: 9781439118467.
- Harsch, M.A., Hulme, P.E., McGlone, M.S., & Duncan, R.P. (2009). Are treelines advancing? A global meta-analysis of treeline response to climate warming. *Ecology Letters*, 12, 1040–1049. <https://doi.org/10.1111/j.1461-0248.2009.01355.x>
- Holmes, R.L. (1983). Computer-assisted quality control in tree-ring dating and measurement. *Tree Ring Bulletin*, 43, 69–78.
- Holtmeier, F.K., & Broll, G. (2005). Sensitivity and response of northern hemisphere altitudinal and polar treelines to environmental change at landscape and local scales. *Global Ecology Biogeography*, 14, 395–410. <https://doi.org/10.1111/j.1466-822X.2005.00168.x>
- Hurrell, J.W., & Van Loon, H. (1997). Decadal variations in climate associated with the North Atlantic Oscillation. *Climatic Change*, 36, 301–326. <https://doi.org/10.1023/A:1005314315270>
- Hurrell, J., Kushnir, Y., Ottersen, G., & Visbeck, M. (2003). An overview of the North Atlantic Oscillation. *The North Atlantic Oscillation: Climate significance and environmental impact*. Geophysical Monograph vol. 134. American Geophysical Union, USA, pp. 1–36. <https://doi.org/10.1029/134GM01>
- Kaplan, J.O., Krumhardt, K.M., & Zimmermann, N. (2009). The prehistoric and preindustrial deforestation of Europe. *Quaternary Science Reviews*, 28, 3016–3034. <https://doi.org/10.1016/j.quascirev.2009.09.028>
- Kaplan, J. O., & Krumhardt, K.M. (2018). The KK09 Anthropogenic Land Cover Change Scenarios for Europe and neighboring countries. Retrieved from PANGAEA repository at: <https://doi.org/10.1594/PANGAEA.893758>
- Kharuk, V.I., Im, S.T., Dvinskaya, M.L., & Ranson, K.J. (2010). Climate-induced mountain tree-line evolution in southern Siberia. *Scandinavian Journal of Forest Research*, 25, 446–454. <https://doi.org/10.1080/02827581.2010.509329>
- Klippel, L., Krusic, P.J., Brandes, R., Hartl-Meier, C., Trouet, V., Meko, M., & Esper, J. (2017). High-elevation inter-site differences in Mount Smolikas tree-ring width data. *Dendrochronologia*, 44, 164–173. <https://doi.org/10.1016/j.dendro.2017.05.006>
- Kirdyanov, A.V., Hagedorn, F., Knorre, A.A., Fedotova, E.V., Vaganov, E.A., Naurzbaev, M.M., Moiseev, P.A., & Rigling, A. (2012). 20th century tree-line advance and vegetation changes along an altitudinal

- transect in the Putorana Mountains, northern Siberia. *Boreas*, 41, 56–67.  
<https://doi.org/10.1111/j.1502-3885.2011.00214.x>
- Konter, O., Krusic, P.J., Trouet, V., & Esper, J. (2017). Meet Adonis, Europe's oldest dendrochronologically dated tree. *Dendrochronologia*, 42, 12. <https://doi.org/10.1016/j.dendro.2016.12.001>
- Körner, C. (2012). Alpine Treelines: Functional Ecology of The Global High Elevation Tree Limits. Springer.
- Körner, C. (2017). A matter of tree longevity. *Science*, 355, 130–131.
- Leigh, D.S., Gragson, T.L., & Coughlan, M.R. (2016). Colluvial legacies of millennial landscape change on individual hillsides, place-based investigation in the western Pyrenees Mountains. *Quaternary International*, 402, 61–71. <https://doi.org/10.1016/j.quaint.2015.08.031>
- Leunda, M., González-Sampériz, P., Gil-Romera, G., Aranbarri, J., Moreno, A., Oliva-Urcia, B., Sevilla-Callejo, M., & Valero-Garcés, B. (2017). The Late-Glacial and Holocene Marboré Lake sequence (2612 m a.s.l., Central Pyrenees, Spain): Testing high altitude sites sensitivity to millennial scale vegetation and climate variability. *Global and Planetary Change*, 157, 214–231.  
<https://doi.org/10.1016/j.gloplacha.2017.08.008>
- Liang, E., Wang, Y., Piao, S., Lu, X., Camarero, J.J., Zhu, H., Zhu, L., Ellison, A.M., Ciais, P., & Peñuelas, J. (2016). Species interactions slow warming-induced upward shifts of treelines on the Tibetan Plateau. *Proceedings of the National Academy of Sciences* 113, 4380–4385.  
<https://doi.org/10.1073/pnas.1520582113>
- Malanima, P. (2005). Italian Urban Population 1300-1861. Database See at . [http://www.paolomalanima.it/default\\_file/Italian%20Economy/Urban\\_Population.pdf](http://www.paolomalanima.it/default_file/Italian%20Economy/Urban_Population.pdf).
- Mensing, S., Tunno, I., Cifani, G., Florindo, F., Noble, P., Sagnotti, L., & Piovesan, G. (2013). Effects of human impacts and climate variations on forest: The Rieti basin since medieval time. *Annali di Botanica*, 3, 121–126. <https://doi.org/10.4462/annbotrm-10243>
- Mensing, S., Tunno, I., Cifani, G., Passigli, S., Noble, P., Archer, C., & Piovesan, G. (2016). Human and climatically induced environmental change in the Mediterranean during the Medieval Climate Anomaly and Little Ice Age: A case from central Italy. *Anthropocene*, 15, 49–59.  
<https://doi.org/10.1016/j.ancene.2016.01.003>
- Miras, Y., Ejarque, A., Riera Mora, S., Orengo, H. A., & Palet Martinez, J. M. (2015). Andorran high Pyrenees (Perafita Valley, Andorra): Serra Mitjana fen. *Grana*, 54, 313-316.  
<https://doi.org/10.1080/00173134.2015.1087590>
- Morellón, M., Valero-Garcés, B., González-Sampériz, P., Vegas-Vilarrúbia, T., Rubio, E., Rieradevall, M., Delgado-Huertas, A., Mata, P., Romero, O., Engstrom, D.R., López-Vicente, M., Navas, A., & Soto, J. (2011). Climate changes and human activities recorded in the sediments of Lake Estanya (NE Spain)

during the Medieval Warm Period and Little Ice Age. *Journal of Paleolimnology*, 46, 423–452.  
<https://doi.org/10.1007/s10933-009-9346-3>

Navarro, L. M., & Pereira, H. M. (2012). Rewilding abandoned landscapes in Europe. In H. M. Pereira & L. M. Navarro (Eds) *Rewilding European landscapes* (pp. 3–23). Cham, Switzerland: Springer International.

Ortega, P., Lehner, F., Swingedouw, D., Masson-Delmotte, V., Raible, C.C., Casado, M., & Yiou, P. (2015). A model-tested North Atlantic Oscillation reconstruction for the past millennium. *Nature*, 523, 71–74.  
<https://doi.org/10.1038/nature14518>

Pascua Echegaray, E. (2012). Señores del Paisaje. Ganadería y recursos naturales en Aragón, siglos XIII–XVII. Universitat de Valencia-PUV, 327 pp.

Piovesan, G., Biondi, F., Baliva, M., Dinella, A., Di Fiore, L., Marchiano, V., Presutti Saba, E., De Vivo, G., Schettino, A., & Di Filippo, A. (2019a). Tree growth patterns associated with extreme longevity: Implications for the ecology and conservation of primeval trees in Mediterranean mountains. *Anthropocene*, 26, 2213–3054. <https://doi.org/10.1016/j.ancene.2019.100199>

Piovesan, G. (2019b). A light-demanding pine spreads into a closed forest. *Frontiers in Ecology and the Environment*, 17, 454. <https://doi.org/10.1002/fee.2109>

Piovesan, G., Mercuri, A.M., & Mensing, S.A. (2018a). The potential of paleoecology for functional forest restoration planning: lessons from Late Holocene Italian pollen records. *Plant Biosystems*, 152, 508–514. <https://doi.org/10.1080/11263504.2018.1435582>

Piovesan, G., Biondi, F., Baliva, M., Presutti Saba, E., Calcagnile, L., Quarta, G., D'Elia, M., De Vivo, G., Schettino, A., & Di Filippo, A. (2018b). The oldest dated tree of Europe lives in the wild Pollino massif: Italus, a strip-bark Heldreich's pine. *Ecology*, 99, 1682–1684. <https://doi.org/10.1002/ecy.2231>

Porter, S. (2009). *The Great Plague*. Amberley Publishing.

Reba, M., Reitsma, F., & Seto, K.C. (2016). Spatializing 6,000 years of global urbanization from 3700 BC to AD 2000. *Scientific Data*, 3, 160034. <https://doi.org/10.1038/sdata.2016.34>

Sangüesa-Barreda, G., Camarero, J.J., Esper, J., Galván, J.D., & Büntgen, U. (2018). A millennium-long perspective on high-elevation pine recruitment in the Spanish central Pyrenees. *Canadian Journal of Forest Research*, 1113, 1108–1113. <https://doi.org/10.1139/cjfr-2018-0025>

Schoolman, E.M., Mensing, S., & Piovesan, G. (2018). Land use and the human impact on the environment in Medieval Italy. *Journal of Interdisciplinary History*, 49, 419–444.  
[https://doi.org/10.1162/jinh\\_a\\_01303](https://doi.org/10.1162/jinh_a_01303)

Seguin, J., Bintliff, J.L., Grootes, P.M., Bauersachs, T., Dörfler, W., Heymann, C., Manning, S.W., Müller, S., Nadeau, M.-J., Nelle, O., Steier, P., Weber, J., Wild, E.-M., Zagana, E., & Unkel, I. (2019). 2500 years of

anthropogenic and climatic landscape transformation in the Stymphalia polje, Greece. *Quaternary Science Reviews*, 213, 133–154. <https://doi.org/10.1016/j.quascirev.2019.04.028>

Servera Vives, G., Miras, Y., Riera, S. Julià, R., Allée, P., Orengo, H., Paradis-Grenouillet, S., & Palet, J.M. (2014) Tracing the land use history and vegetation dynamics in the Mont Lozère (Massif Central, France) during the last 2000 years: The interdisciplinary study case of Countrasts peat bog. *Quaternary International*, 353, 123–139. <https://doi.org/10.1016/j.quaint.2013.10.048>

Stokes, M.A., & Smiley, T.L. (1996). An Introduction to Tree-Ring Dating. University of Arizona, Tucson, Arizona, USA, p. 73

Szeicz, J.M., & Macdonald, G.M. (1995). Recent white spruce dynamics at the subarctic alpine treeline of north-western Canada. *Journal of Ecology*, 83, 873–885.

Trouet, V., Esper, J., Graham, N.E., Baker, A., Scourse, J.D., & Frank, D.C. (2009). Persistent positive North Atlantic Oscillation mode dominated the medieval climate anomaly. *Science*, 324, 78–80. <https://doi.org/10.1126/science.1166349>

Vitali, A., Camarero, J.J., Garbarino, M., Piermattei, A., & Urbinati, C. (2017). Deconstructing human-shaped treelines: Microsite topography and distance to seed source control *Pinus nigra* colonization of treeless areas in the Italian Apennines. *Forest Ecology and Management*, 406, 37–45. <https://doi.org/10.1016/j.foreco.2017.10.004>

Vitali, A., Garbarino, M., Camarero, J.J. Malandra, F., Toromani, E., Spalevic, V., Čurović, M., & Urbinati, C. (2019). Pine recolonization dynamics in Mediterranean human-disturbed treeline ecotones. *Forest Ecology and Management*, 435, 28–37. <https://doi.org/10.1016/j.foreco.2018.12.039>

Walsh, K., Court-Picon, M., de Beaulieu, J.L., Guiter, F., Mocci, F., Richer, S., Sinet, R., Talon, B., & Tzortzis, S. (2014). A historical ecology of the Ecrins (Southern French Alps): Archaeology and palaeoecology of the Mesolithic to the Medieval period. *Quaternary International*, 353, 52–73. <https://doi.org/10.1016/j.quaint.2013.08.060>

Wirth, K., Messier, C., Bergeron, Y., Frank, D. & Fankhänel, A. (2009). Old-growth forest definitions; a pragmatic view. In: Wirth, K. et al. (eds.). Old-growth forests. Ecological Studies 207. Springer-Verlag, Berlin–Heidelberg. p. 11–33.

Zasada, J.C., Sharik, T.L., & Nygren, M. (1992). The reproductive process in boreal forest trees. In: Shugart, H.H., Leemans, R., & Bonan, G.B. (eds.). A systems analysis of the global boreal forest, Cambridge University Press, Cambridge, UK. pp. 85–125.

## Figure legends

**Figure 1.** Location of the study populations within the Mediterranean basin. The yellow stars indicate the nearby cities utilized to assess human population trends in southern Europe: Gerber (Zaragoza and Barcelona, north-eastern Spain), Pollino (Messina, southern Italy) and Mt. Smolikas (Thessaloniki, northern Greece). The gray scales represent elevation, increasing from black to white.

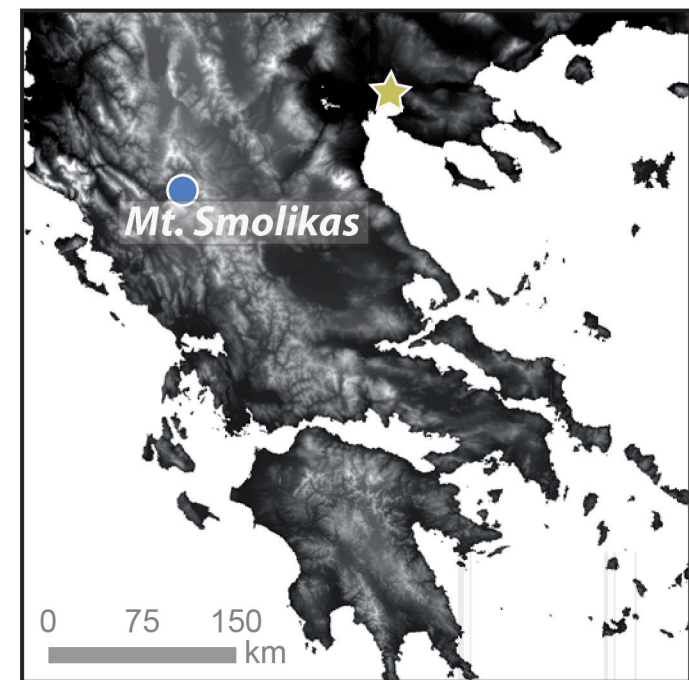
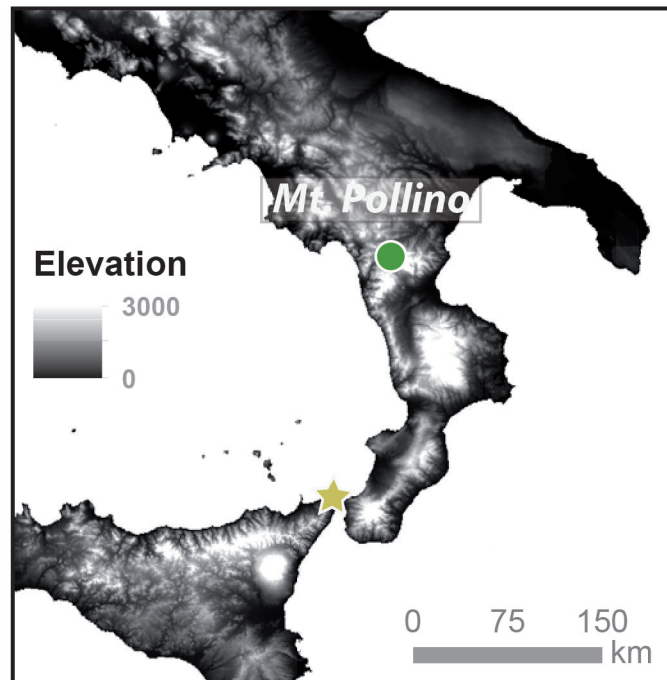
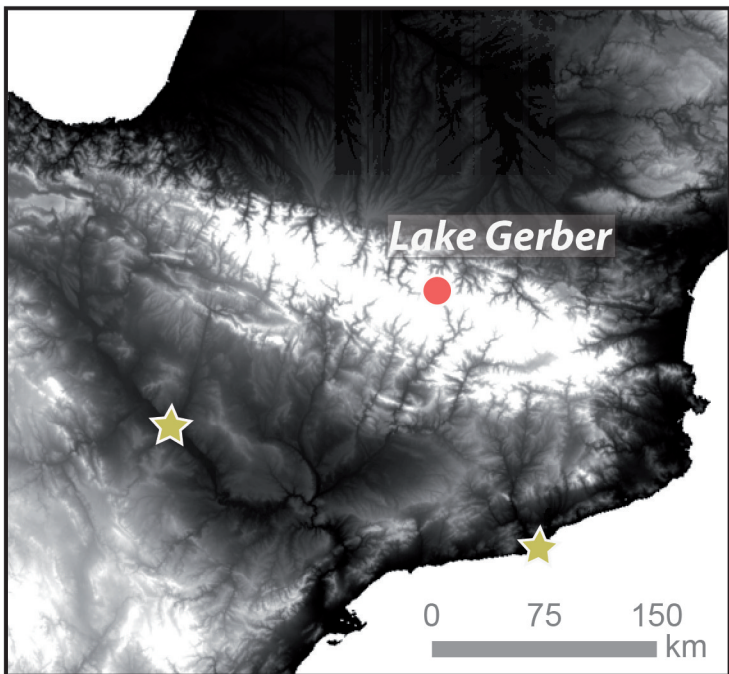
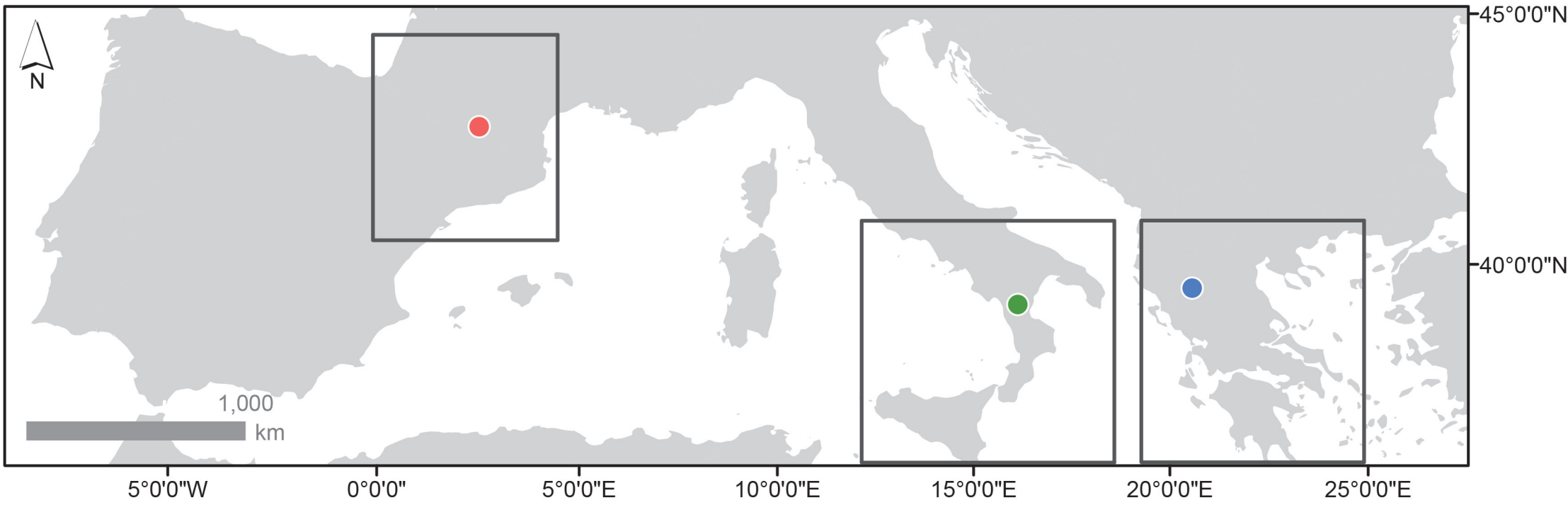
**Figure 2.** Tree recruitment dynamics in the three mountain populations: (a) Gerber (*Pinus uncinata*; north-eastern Spain), (b) Pollino (*Pinus heldreichii*; southern Italy), and (c) Mt. Smolikas (*Pinus heldreichii*; northern Greece) considering tree diameter at breast height (DBH) (small vs. large trees). Note that different diameter thresholds were used depending on site characteristics, including 30, 90 and 60 cm in Gerber, Pollino and Smolikas, respectively. The long-term trends of tree recruitment dynamics as a function of tree diameter are shown as splines. The top-left inset shows tree recruitment considering only large and living trees. The vertical grey bar highlights peak tree recruitment in the late 15<sup>th</sup> and early 16<sup>th</sup> centuries.

**Figure 3.** Human population trends in the cities closest to the tree sites in (a) Gerber (*Pinus uncinata*; north-eastern Spain), (b) Pollino (*Pinus heldreichii*; southern Italy), and (c) Mt. Smolikas (*Pinus heldreichii*; northern Greece). Human population data were derived from Reba et al. (2016) and Malanima (2005). The long-term trends are emphasized using splines. The vertical grey bar shows the peak in tree recruitment in the late 15<sup>th</sup> and early 16<sup>th</sup> centuries.

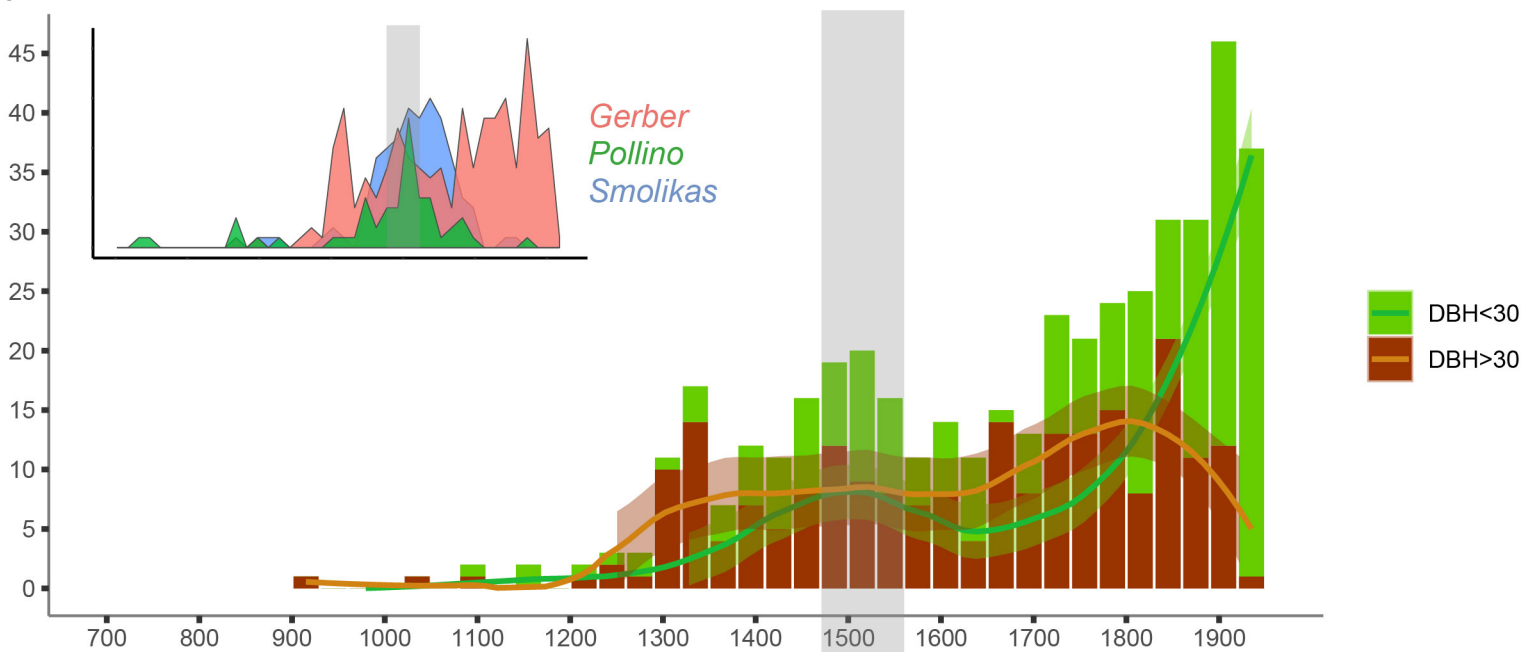
**Figure 4.** (a) Values of the land-use index for the study pine populations according to Kaplan et al. (2009). The grey areas above and below the lines show the range of uncertainty in past population estimations. (b) Historical pasture area based on the HYDE 3.1 database (Goldewijk et al., 2011). The vertical grey boxes show the peak in tree recruitment in the late 15<sup>th</sup> and early 16<sup>th</sup> centuries.

**Figure 5.** (a) 30-year low-pass filtered North Atlantic Oscillation (NAO) reconstructions derived from different proxies (Trouet et al., 2009; Baker et al., 2015; Ortega et al., 2015; Franke et al., 2017). (b) Standardized tree recruitment patterns in each of the three study populations. (c) Tree-ring based local temperature reconstructions in Gerber, Spain (red curves; Büntgen et al., 2017), and Mt. Smolikas, Greece (blue curves; Esper et al., 2020). The grey areas show the standard error. The vertical grey box in A, B and C highlights peak tree recruitment in the late 15<sup>th</sup> and early 16<sup>th</sup> centuries. (d) Relationships (Spearman correlation coefficients,  $r_s$ ) between the recruitment residuals after fitting a power function and local temperature reconstructions for the 1300–1800 period in Gerber and Smolikas. The 30-year classes in the peak of tree recruitment (1485, 1515 and 1545) are highlighted.

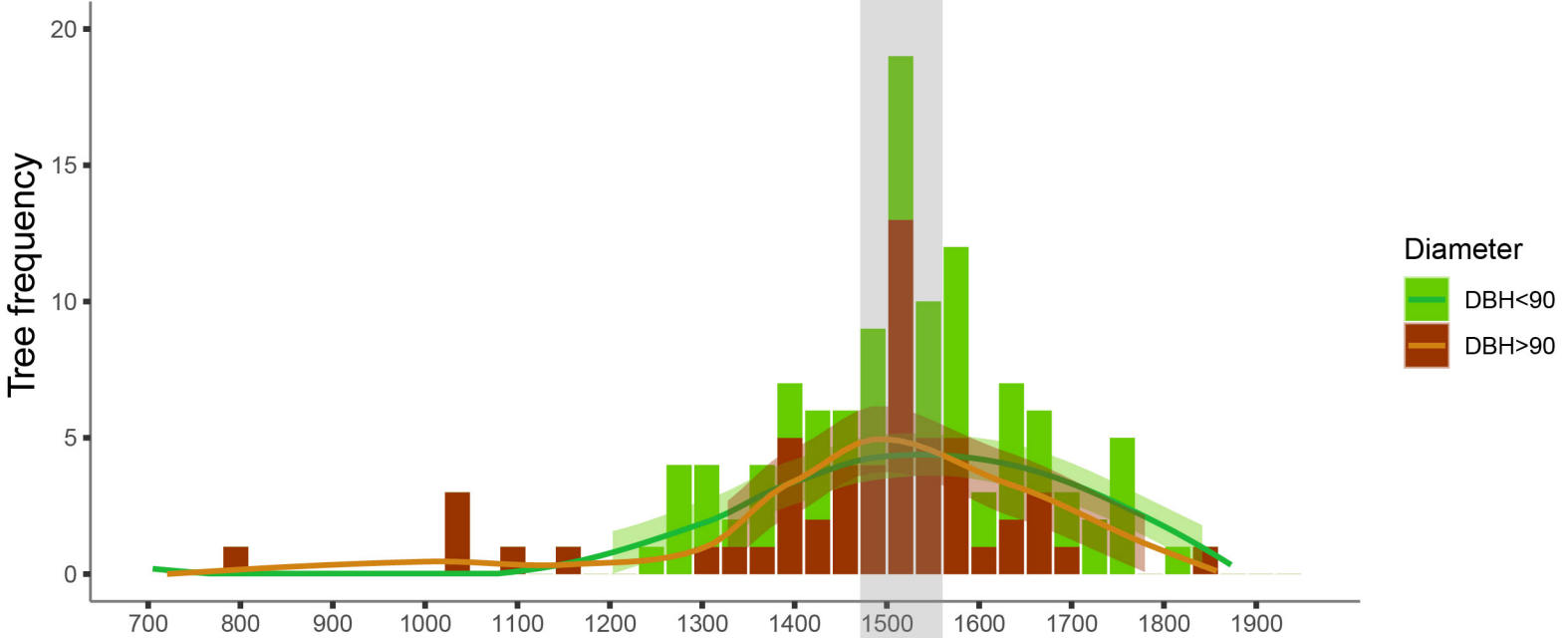




**(a)** Gerber – *P. uncinata*



**(b)** Pollino – *P. heldreichii*



**(c)** Smolikas – *P. heldreichii*

