

Analytica Chimica Acta

Capillary Electrophoretic Methods for Classification of Methicillin-Resistant Staphylococcus aureus (MRSA) Clones

--Manuscript Draft--

Manuscript Number:	ACA-22-1757R1
Article Type:	Full Length Article
Section/Category:	SEPARATION METHODS
Keywords:	Capillary Electrophoresis; classification; fused silica capillary; separation; Staphylococcus aureus; Temperature
Corresponding Author:	Jiří Šalplachta Institute of Analytical Chemistry Czech Academy of Sciences Brno, CZECH REPUBLIC
First Author:	Jiří Šalplachta
Order of Authors:	Jiří Šalplachta Marie Horká Filip Růžička Alena Siváková Pavel Karásek Jiří Šalplachta Roman Pantůček Michal Roth
Manuscript Region of Origin:	CZECH REPUBLIC
Abstract:	This study describes differentiation of methicillin-resistant Staphylococcus aureus (MRSA) isolates belonging to different genotype groups by the combination of electrophoretic techniques, transient isotachopheresis and micellar electrokinetic chromatography. MRSA isolates were separated in fused silica capillary with roughened inner surface prepared by etching with supercritical water. Separation temperature together with the rinsing procedure of the capillary turned out to be the key factors of successful analysis. The individual genotype groups were baseline-resolved in forty minutes. Partial separation of the individual isolates within the groups was also observed. Relative standard deviations of the migration times of the isolate zones ranged from 0.32 to 0.79%. In addition, capability of the developed CE method to concentrate and separate MRSA isolates in clinical samples was proved by the analysis of blood sample.

Jiří Šalplachta, Ph.D.
Institute of Analytical Chemistry of the CAS, v. v. i.
Veveří 97
60200 Brno
Czech Republic
E-mail: salplachta@iach.cz
Phone: +420 532290213

Brno, August 19, 2022

Revision of Manuscript No.: ACA-22-1757
Title: Capillary Electrophoretic Methods for Classification of Methicillin-Resistant
Staphylococcus aureus (MRSA) Clones

by Marie Horká, Filip Růžička, Alena Siváková, Pavel Karásek, Jiří Šalplachta, Roman
Pantůček, and Michal Roth

Dear Editor:

Thank you for your e-mail message dated July 23, 2022 and for the reviewers' comments on the manuscript specified above. This cover letter is to accompany the upload of the revised manuscript.

In general, we have found the reviewers' comments very competent and helpful in improving the manuscript and we have modified the revised manuscript accordingly. A list of our itemized point-by-point responses to the individual issues raised by the reviewers is attached. The changed sections are in red in the manuscript.

Thank you for considering the revised version of our manuscript.

Sincerely yours,

Jiří Šalplachta
Corresponding Author

Response to reviewers' comments

The authors would like to thank the Reviewers for careful review of our manuscript (Manuscript No.: ACA-22-1757 entitled " Capillary Electrophoretic Methods for Classification of Methicillin-Resistant *Staphylococcus aureus* (MRSA) Clones" and providing us with their comments and suggestion to improve the quality of the manuscript. All remarks were taken into account. The changed sections are marked in red in the manuscript. We hope that the manuscript will be acceptable for the publishing after these corrections.

Reviewer #1

The authors proposed a CE method for classification of methicillin-resistant *S. aureus* (MRSA) clones. The work is novel and the manuscript is well-written and organized. A few suggestions are shown below prior the acceptance for publication.

1. *Staphylococcus aureus* should be italic throughout the manuscript.

The error has been corrected.

2. Common abbreviations can be omitted such as i.d., o.d., EOF, EtOH, CE, PEG, RSD, etc.

The common abbreviations have been excluded from the list.

3. Explanation one the separation mechanism of the bacteria due to the charges at outer cell surface should be elaborated.

A brief explanation of the separation mechanism of the bacteria has been added to the text.

4. Is there any analyte adsorption problem to the inner wall of the capillary?

We did not encounter any adsorption problem after optimizing the method.

5. The method is proposed for the classification of bacteria. Specificity of the method should be investigated.

With respect to the ability to accurately and specifically analyze the individual bacteria in the samples, our method provided nearly the same results as the MLST analysis and the *spa* typing method (taken as the reference methods).

6. There are too many references.

The number of references has been reduced to 45.

Reviewer #2

In my opinion, this work is fine. The analytical approach is not necessarily fully new, but the manuscript nicely shows the potential of CE for characterization of bacteria and related species.

I have just one minor comment: Table 1 should be put to the Supplementary Material. It is sufficient to summarize the information of this Table in the text.

The Table 1 has been transferred to the Supplementary Material.

Response to reviewers' comments

The authors would like to thank the Reviewers for careful review of our manuscript (Manuscript No.: ACA-22-1757 entitled " Capillary Electrophoretic Methods for Classification of Methicillin-Resistant *Staphylococcus aureus* (MRSA) Clones" and providing us with their comments and suggestion to improve the quality of the manuscript. All remarks were taken into account. The changed sections are marked in red in the manuscript. We hope that the manuscript will be acceptable for the publishing after these corrections.

Reviewer #1

The authors proposed a CE method for classification of methicillin-resistant *S. aureus* (MRSA) clones. The work is novel and the manuscript is well-written and organized. A few suggestions are shown below prior the acceptance for publication.

1. *Staphylococcus aureus* should be italic throughout the manuscript.

The error has been corrected.

2. Common abbreviations can be omitted such as i.d., o.d., EOF, EtOH, CE, PEG, RSD, etc.

The common abbreviations have been excluded from the list.

3. Explanation one the separation mechanism of the bacteria due to the charges at outer cell surface should be elaborated.

A brief explanation of the separation mechanism of the bacteria has been added to the text.

4. Is there any analyte adsorption problem to the inner wall of the capillary?

We did not encounter any adsorption problem after optimizing the method.

5. The method is proposed for the classification of bacteria. Specificity of the method should be investigated.

With respect to the ability to accurately and specifically analyze the individual bacteria in the samples, our method provided nearly the same results as the MLST analysis and the *spa* typing method (taken as the reference methods).

6. There are too many references.

The number of references has been reduced to 45.

Reviewer #2

In my opinion, this work is fine. The analytical approach is not necessarily fully new, but the manuscript nicely shows the potential of CE for characterization of bacteria and related species.

I have just one minor comment: Table 1 should be put to the Supplementary Material. It is sufficient to summarize the information of this Table in the text.

The Table 1 has been transferred to the Supplementary Material.



Highlights

- Reliable differentiation of the genotypically different clones of MRSA was achieved
- Combination of tITP/MEKC was used for this purpose
- The method was performed in FS capillary with roughened inner part
- Separation temperature and rinsing procedure were optimized for successful analysis
- Analysis was done in forty minutes

Declaration of competing interest

The authors declare that they have no known competing financial interests or personal relationships that could have appeared to influence the work reported in this paper.

Author Contributions: All authors, Marie Horká, Filip Růžička, Alena Siváková, Pavel Karásek, Jiří Šalplachta, Roman Pantůček, and Michal Roth, contributed equally.

1
2
3
4
5
6
7 **Capillary Electrophoretic Methods for Classification of Methicillin-Resistant**
8 ***Staphylococcus aureus* (MRSA) Clones**

9 Marie Horká,^a Filip Růžička,^b Alena Siváková,^b Pavel Karásek,^a Jiří Šalplachta,^{a,*} Roman
10 Pantůček,^c and Michal Roth ^a

11
12
13
14 Addresses

15
16
17 ^aInstitute of Analytical Chemistry of the CAS, Veveří 97, 602 00 Brno, Czech Republic

18
19 ^bDepartment of Microbiology, Faculty of Medicine, Masaryk University, Kamenice 5, 625 00
20
21 Brno, Czech Republic

22
23
24 ^cDepartment of Experimental Biology, Faculty of Science, Masaryk University, Kotlářská 2,
25
26 611 37 Brno, Czech Republic

27
28
29
30
31
32
33
34 *Corresponding author:

35
36 Institute of Analytical Chemistry of the Czech Academy of Sciences, Veveří 97, Brno, 60200,
37
38 Czech Republic

39
40 email: salplachta@iach.cz

41
42
43 phone number: 00420 532 290 213
44
45
46
47
48
49
50
51
52
53
54
55
56
57
58
59
60
61
62
63
64
65

ABSTRACT

This study describes differentiation of methicillin-resistant *Staphylococcus aureus* (MRSA) isolates belonging to different genotype groups by the combination of electrophoretic techniques, transient isotachopheresis and micellar electrokinetic chromatography. MRSA isolates were separated in fused silica capillary with roughened inner surface prepared by etching with supercritical water. Separation temperature together with the rinsing procedure of the capillary turned out to be the key factors of successful analysis. The individual genotype groups were baseline-resolved in forty minutes. Partial separation of the individual isolates within the groups was also observed. Relative standard deviations of the migration times of the isolate zones ranged from 0.32 to 0.79 %. In addition, capability of the developed CE method to concentrate and separate MRSA isolates in clinical samples was proved by the analysis of blood sample.

Keywords: capillary electrophoresis; classification; fused silica capillary; separation; *Staphylococcus aureus*; temperature

Abbreviations: *agr*, accessory gene regulator typing; BGE, background electrolyte; CCM, Czech Collection of Microorganisms; EtOH, ethanol; FS, fused silica; MLST, multi-locus sequence typing; MRSA, methicillin-resistant *S. aureus*; MSSA, methicillin-susceptible *S. aureus*; PCR, polymerase chain reaction; PSS, physiological saline solution; *S. aureus*, *Staphylococcus aureus*; SCC*mec*, Staphylococcal Cassette Chromosome *mec* (chromosomal island involved in methicillin resistance); SCW, supercritical water; *spa*, staphylococcal protein A gene; ST, sequence type; tITP, transient isotachopheresis.

1. Introduction

Staphylococcus aureus is a Gram-positive bacterium that can cause a wide spectrum of nosocomial infections associated with significant morbidity, mortality and also high medical care costs [1]. The morbidity increases as the therapeutic efficacy of the available antibiotics decreases, which is related to the increased occurrence of multidrug-resistant methicillin-resistant *Staphylococcus aureus* (MRSA) [2]. *S. aureus* produces many virulence factors that contribute to the higher incidence of staphylococcal infections. These factors include surface proteins involved in establishing an infection, secreted compounds necessary for an outbreak of the infection, and biofilm formation that enable bacteria to adhere to various surfaces and protects the bacterium against host defenses and antimicrobials [3,4].

Specific phenotypic and genotypic characteristics of MRSA may play an important role in the serious infections [5-7]. The genotypically similar MRSA isolates can be classified into individual groups (clones) on the basis of their genotype profiles. MRSA isolates belonging to the single genotype group can have different phenotypic characteristics [5,7]. Various methods are used for the genotypic and phenotypic characterization of MRSA isolates [5,8,9]. Pulsed-field gel electrophoresis (PFGE) macrorestriction profile, multi-locus sequence type (MLST), staphylococcal protein A (*spa*) type, staphylococcal cassette chromosome *mec* (SCC*mec*), accessory gene regulator (*agr*) group, and capsular polysaccharide type are associated with particular clonal complex [10]. Additional genotyping methods such as Polymerase Chain Reaction (PCR) gene typing, repetitive element sequence-based PCR, plasmid analysis, or toxin gene profiling are used [11]. These methods are relatively rapid with good reproducibility and repeatability [12]. Nowadays, most techniques can be replaced by whole genome sequencing but it is relatively expensive, time-consuming, and requiring considerable expertise in data analysis [13]. Despite many genotyping methods developed for MRSA typing, there is no single

1 rapid technique with sufficient discriminatory power. Generally, low discrimination ability,
2 technical complexity, difficult interpretation of the results, and high analysis costs are among
3 the main disadvantages of the genotyping methods. Phenotyping methods include pathogen-
4 drug and pathogen-host interactions, serotyping, protein electrophoresis and surface protein
5 shaving [8, 9, 14]. Cultivation methods are easy to perform, cheap, and readily available in the
6 clinical laboratories. On the other hand, these methods are often time-consuming with poor
7 discriminatory ability [9, 12, 15]. A promising phenotyping tool is matrix-assisted laser
8 desorption/ionization time-of-flight mass spectrometry (MALDI-TOF MS). This technique has
9 been used for a fast and low-cost microbial species identification [16,17]. Although several
10 authors demonstrated the ability of MALDI-TOF MS to identify MRSA [18-20], other authors
11 reported poor reliability of the MALDI-based methods excluding MALDI-TOF MS from the
12 use in routine laboratory [21, 22].

29 Capillary electrophoretic methods (CE) have proven to be suitable alternative to commonly
30 used microbiological methods for the analysis of bacteria including *S. aureus* [8, 23, 24]. In
31 general, bacteria are separated on the basis of the differences in the electrophoretic cell
32 mobilities, which depend on the charge of the outer cell surface [23]. **Bacterial outer surface is
33 electrically charged under most conditions as it carries various dissociable groups (amino acid
34 residues, carbohydrate moieties, etc.). When an electric field is applied, bacterial cells move
35 with a velocity related to their electrophoretic cell mobilities and, thus, their separation occurs
36 [23].** Microbial cell electric properties can be characterized by zeta potential (ζ), which is related
37 to the electrophoretic mobility of the cells. The value of ζ is strongly dependent on chemical
38 and physical environmental factors [25]. Chemical composition of cell surface [26],
39 composition of background electrolyte (BGE) including additives (e.g., polyethylene glycol,
40 PEG, non-ionic surfactant Brij 35) [27-32], pH of the BGE, sample matrix, inner surface
41 structure of the capillary (rough or smooth) [8, 24], and the separation temperature [33] are

1 among these factors. CE was utilized to differentiate between methicillin-susceptible *S. aureus*
2 (MSSA) and MRSA strains in our previous studies.
3

4 In this study, capillary electrophoretic techniques were used for the differentiation of the
5 genotypically different clones of MRSA. Simultaneously, the MSSA cells were used for
6 comparison of the mobility change during the method optimization. The combination of
7 polymer-enhanced transient isotachopheresis (tITP) [31] from a high conductivity matrix and
8 sweeping of the charged cells in micellar electrokinetic chromatography (MEKC) [30-32] was
9 used for this purpose. The analyses were performed in a fused silica (FS) capillary with a
10 roughened part prepared by etching with supercritical water (SCW) [8, 24, 30, 31, 34-36].
11
12
13
14
15
16
17
18
19
20
21
22
23

24 **2. Materials and methods**

25 *2.1. Chemicals*

26
27
28
29 Most of the chemicals, including non-ionogenic detergent Brij 35 and ethanol (EtOH), were
30 purchased from Sigma (St. Louis, MO). Polyethylene glycol (M_r 10 000, PEG 10 000) was
31 obtained from Aldrich (Milwaukee, WI). All chemicals were of electrophoresis or analytical
32 grade purity.
33
34
35
36
37
38
39
40
41
42
43
44

45 *2.2. Preparation of etched fused silica capillaries*

46
47
48
49 The experimental setup for preparation of etched capillaries has already been described [35].
50
51 This type of structure can be defined as a set of conical formations lying close together with a
52 base of 150 nm and a height between 200 and 300 nm. For SCW etching, the ultra-pure water
53 at a density of 0.298 g cm^{-3} was used, created in a short heated zone at $420 \text{ }^\circ\text{C}$ and 340 bar. The
54
55
56
57
58
59
60
61
62
63
64
65

1 linear rate of capillary movement was set to 55 mm min⁻¹ and each point of silica surface was
2 etched for a period of 600 ms. Commercial FS capillaries, 50 µm i.d. and 360 µm o.d., were
3 delivered by Agilent Technologies (Waldbronn, Germany). Purification of water consisted of a
4 single distillation followed by reverse osmosis (Ultra Clear UV, SG Wasseraufbereitung und
5 Regenerierstation GmbH, Barsbüttel, Germany). The resultant value of water conductivity was
6 kept below 0.055 µS cm⁻¹, the total concentration of organic compounds was below 3 ppb, and
7 the dissolved gases were removed by stripping with a gentle stream of helium (purity 4.8, Siad
8 Czech spol. s r.o.).
9
10
11
12
13
14
15
16
17
18
19
20
21

22 *2.3. Bacterial strains and growth conditions*

23
24
25
26

27 The bacteria were isolated from various human or veterinary clinical samples from the Czech
28 Republic and stored in Collection of Microbiology Institute, Masaryk University and St. Anne's
29 University Hospital (Brno, Czech Republic). The MRSA isolates were genotypically
30 characterized on the basis of MLST analysis [37] of the staphylococcal chromosome cassette
31 containing *SCCmec* and the *spa* typing method that is based on sequencing of the polymorphic
32 X region of the protein A gene (*spa*) [11]. The MSSA strain CCM 3953 was obtained from
33 Czech Collection of Microorganisms (Brno, Czech Republic). The strain was used for
34 comparison of the mobility change during the optimization procedure. Three isolates of each of
35 three MRSA genotype groups were involved in this study: group A - ST8/t064/*SCCmec*-IV
36 (FS195, FS196, FS197), group B - ST239/t037/*SCCmec*-III (FS198, FS199, FS200), and group
37 C - ST225/t003/*SCCmec*-II (FS180, FS183, FS193). Type ST8/t064/*SCCmec*-IV was reported
38 in veterinary samples (horses) from the United States and from some other countries [38].
39 ST239/t037/*SCCmec*-III is probably the oldest pandemic MRSA type, circulating in many
40 countries since the 1970s. It is still frequently isolated worldwide. ST225/t003/*SCCmec*-II is a
41
42
43
44
45
46
47
48
49
50
51
52
53
54
55
56
57
58
59
60
61
62
63
64
65

1
2
3
4
5
6
7
8
9
10
11
12
13
14
15
16
17
18
19
20
21
22
23
24
25
26
27
28
29
30
31
32
33
34
35
36
37
38
39
40
41
42
43
44
45
46
47
48
49
50
51
52
53
54
55
56
57
58
59
60
61
62
63
64
65

typical nosocomial type and was predominant in the Czech Republic [39]. This type is also common in other European countries [40].

The tested isolates were cultivated on Mueller-Hinton agar (Oxoid, United Kingdom) at 37 °C for 24 h and the standardized bacterial suspensions were prepared as described previously [8]. Concentrations of the bacteria were determined by measurement of the optical density of the bacterial suspensions using a DU 520 UV-Vis spectrophotometer (Beckmann Instruments, Palo Alto, CA, USA) operating at 550 nm, according to the calibration curve, which was defined by the reference samples. Required sample concentrations were achieved by serial dilution of the prepared suspensions (10^7 cells mL⁻¹) with physiological saline solution (PSS, 0.85 % (w/v) NaCl). Human blood (group 0, Blood Bank of St. Anne's University Hospital in Brno, Czech Republic) was spiked with the bacterial cells. The preparation of blood samples prior to CE analysis was performed as described in our previous study [8]. Ten mL of the blood sample was spiked with 500 cells of each examined MRSA isolates of the genotype group A, FS195, FS196 and FS197, thus the concentration of each isolate in the prepared sample was 50 cells mL⁻¹. The sample was then processed according to the published procedure [8]. The pellet obtained after the purification steps, containing 500 cells of each isolate, was re-suspended in 100 µL of PSS and analyzed.

2.4. Safety considerations

The potentially pathogenic bacteria analyzed in this work belong to the risk group 2 of infectious agents. Although they can possibly cause a human disease, they do not present serious hazard to lab personnel under normal circumstances. Biological safety level 2 was maintained throughout the work with the living bacterial cultures. All experiments were

1 performed according to the instructions for the work with infective materials and the use of the
2 latex gloves and regular disinfection of the laboratory equipment was maintained to avoid any
3
4 contamination by microorganisms.
5
6
7
8

9 *2.5. MEKC equipment and procedures*

10
11
12
13
14 A laboratory-made apparatus [41] operated at a constant voltage (-20 kV on the detector side)
15 supplied with a Spellman CZE 1000 R high-voltage unit (Plainview, NY, USA) was used for
16
17 the electrophoretic experiments. The experiments were performed in the smooth (untreated) FS
18
19 capillary and the FS capillary with roughened part at 20 or 25 °C. The FS capillary was 500 mm
20
21 long, the distance between anode and the detection window was 350 mm. The FS capillary with
22
23 roughened part was etched with SCW in the length of 250 mm from the anode side. The ends
24
25 of the capillary and the electrodes were placed in 3-mL glass vials filled with BGE. The non-
26
27 etched part of the capillary was orientated toward the cathode side. A LCD 2082 on-column
28
29 UV-Vis detector (Ecom, Prague, Czech Republic), connected to the detection cell by optical
30
31 fibers (Polymicro Technologies, Phoenix (AZ), USA), was operated at 235 or 280 nm. The
32
33 detector signals were acquired and processed with the Clarity Chromatography Station (version
34
35 2.6.3.313, DataApex, Prague, Czech Republic). Each experiment was repeated ten times.
36
37
38
39
40
41
42
43

44 The BGE was composed of phosphate buffer (pH 7, 2×10^{-3} or 5×10^{-3} mol L⁻¹) and dissolved
45
46 additives, EtOH (5–15 % (v/v)), PEG 10 000 (0.05–0.2 % (w/v)), and Brij 35 (0.05–0.3 %
47
48 (w/v)). The examined MSSA and MRSA cells were suspended in PSS and vortexed using
49
50 Thermomixer comfort (Eppendorf, Hamburg, Germany) at 25 °C for 2 min before analysis. The
51
52 samples (100 nL) were injected into the capillary using the single-syringe infusion pump (Cole-
53
54 Parmer, Vernon Hills, USA) at a flow rate of 1 μ L min⁻¹ from the anodic side. With respect to
55
56 the blood sample, the dynamic adhesion of the cells from the prepared blood sample onto the
57
58
59
60
61
62
63
64
65

1 inner capillary surface was used [32]. In this case, 100 μL of the prepared sample (cell pellet
2 suspended in 100 μL of PSS as described above) was dynamically injected into the capillary.
3
4 Thiourea was used as a neutral marker of electroosmotic flow (EOF) in the measurements of
5 the dependence of pH on the electroosmotic mobility, μ_{EOF} , at the temperatures of 20 or 25 $^{\circ}\text{C}$.
6
7

8
9 Before each MEKC run, the capillary was rinsed with EtOH (2–10 min) and then back-
10 flushed with BGE or $4 \times 10^{-3} \text{ mol L}^{-1}$ phosphate buffer, pH 7 (2–10 min). The rinsing was
11 performed using the single-syringe infusion pump attached to the cathodic side of the capillary.
12
13 Rinsing with each fluid consisted of two steps. At the first step, the capillary was rinsed with
14
15 10 μL of the particular fluid at a flow rate of $10 \mu\text{L min}^{-1}$. At the second step, the particular
16
17 fluid was left in the capillary for 1–9 min, i.e. the rest of the total rinsing time. This procedure
18
19 ensured sufficient desorption of the potentially adhered bacterial cells from the roughened
20
21 capillary surface before next analysis.
22
23
24
25
26
27
28
29
30

31 **3. Results and discussion**

32 *3.1. MEKC separation of genotypically different groups of MRSA*

33
34
35
36
37 Successful discrimination of MSSA and MRSA strains by CE in the SCW-etched FS capillary
38
39 in our previous studies [8, 24] led to the idea to investigate the ability of CE for phenotyping of
40
41 MRSA isolates. The experiments described in this study were designed and performed on the
42
43 basis of our experience with CE analysis of various microorganisms utilizing SCW-etched FS
44
45 capillary [8, 24, 32, 42, 43]. Three MRSA isolates (FS197, FS198, and FS180) belonging to
46
47 different genotype groups, ST8/t064/*SCCmec*-IV, ST239/t037/*SCCmec*-III, and
48
49 ST225/t003/*SCCmec*-II, designated group A, B, and C, respectively, and one MSSA strain were
50
51 selected for the method development. The strains were separated by MEKC in both smooth FS
52
53
54
55
56
57
58
59
60
61
62
63
64
65

1 capillary and the SCW-etched FS capillary (Figure 1A). With respect to the different properties
2 of the inner surfaces, different BGE composition (concentration of phosphate buffer and
3 additives, PEG 10 000, Brij 35, and EtOH) had to be used for both types of capillaries for
4 successful analysis of the examined bacteria. The temperature of separation and rinsing
5 procedure were identical. In contrast to the smooth FS capillary, the SCW-etched FS capillary
6 allowed separation of MSSA from MRSA strains. Further optimization of the experimental
7 conditions (BGE composition, separation temperature, rinsing procedure) did not improve the
8 separation of the analyzed MSSA and MRSA in the smooth FS capillary. Just a single peak was
9 observed when the analysis was performed in the smooth FS capillary regardless of separation
10 conditions used. The SCW-etched FS capillary, on the other hand, provided promising results
11 as shown in Figure 1.

12
13
14
15
16
17
18
19
20
21
22
23
24
25
26
27
28
29
30
31
32
33
34
35
36
37
38
39
40
41
42
43
44
45
46
47
48
49
50
51
52
53
54
55
56
57
58
59
60
61
62
63
64
65

Roughened surface of the SCW-etched FS capillary had a positive effect on the separation of the MSSA strain from the MRSA isolates, although the EOF in the roughened capillary was significantly higher using phosphate buffer without additives as BGE. The lower the EOF is achieved the better separation of the bacteria can be observed. Figure 2 shows a comparison of the EOF in the smooth FS capillary (curve 1) and in the etched FS capillary (curve 3) at 25 °C. The use of BGE additives significantly reduced the EOF in the SCW-etched FS capillary (Figure 2, curve 4 vs. curve 3), but it was still higher than in the smooth FS capillary (Figure 2, curve 2). The experimental conditions were further optimized to lower the EOF. Decrease in additive concentration together with the shorter rinsing procedure in the case of SCW-etched FS capillary led to another significant decrease of the EOF (Figure 2, curve 5 vs. curve 4). The achieved EOF was approximately a fifth lower (at pH 7) than the EOF in the smooth FS capillary (Figure 2, curve 2). However, even significantly reduced EOF did not improve the separation and only single zone of the MRSA isolates was detected again (data not shown).

1
2 In an effort to separate the MRSA isolates, the temperature of separation was decreased to
3 20 °C. This led to a further decrease in the EOF (by fifth again at pH 7) at the same BGE
4 composition as in the previous case (Figure 2, curve 6 vs. curve 5). Consequently, slightly better
5 MRSA isolates separation (three overlapping peaks) was observed (Figure 1B). The increase in
6 the concentration of Brij 35 to 0.3 % (w/v) in the BGE caused a slight reduction of the EOF
7 (Figure 2, curve 7 vs curve 6) and, thus, even better separation of the MRSA isolates
8 (Figure 1C). The isolate of the group A was separated from the co-eluting isolates of the groups
9 B and C. The order of the isolate zones was determined experimentally by the standard addition
10 method. Figure 1D shows complete separation of the MRSA isolates belonging to the
11 individual genotype groups and also more distinctive separation of MSSA strain from the
12 MRSA isolates (in comparison to the result shown in Figure 1A, etched capillary). This result
13 was achieved when the concentration of Brij 35 was decreased to 0.1 % (w/v) and the rinsing
14 procedure was changed again – 2 min with EtOH and 5 min with BGE. Under these conditions,
15 a further drop of the EOF (Figure 2, curve 8) was observed which corresponded to half the EOF
16 value at pH 7 in the smooth FS capillary at 25 °C (Figure 2, curve 2). Figure 1E shows the
17 detected zones of the MRSA isolates of different genotype groups in detail. The MRSA isolates
18 were analyzed individually for this purpose. The same migration times of the analyzed isolates
19 were achieved as in the case of analysis of the isolate mixture. The obtained results confirmed
20 that surface roughness together with separation temperature [33] and capillary rinsing method
21 significantly affect bacterial separations. Beside the decrease in the EOF, the decrease in the
22 temperature of separation also induced changes in diffusion and other physico-chemical
23 properties of the entire separation system – BGE, roughened capillary surface and bacterial
24 cells [44, 45]. This enabled the separation of different types of bacterial cells under the properly
25 selected separation conditions. With respect to the achieved results, the following experiments
26 were performed in the etched capillary at 20 °C.
27
28
29
30
31
32
33
34
35
36
37
38
39
40
41
42
43
44
45
46
47
48
49
50
51
52
53
54
55
56
57
58
59
60
61
62
63
64
65

3.2. MEKC separation of individual MRSA isolates within individual genotype groups

Three MRSA isolates of each genotype group (A – FS195, FS196, FS197; B – FS180, FS183, FS193; C – FS198, FS199, FS200) were selected for the next MEKC experiments. The BGE composition and other experimental conditions were essentially the same as in the experiments shown in Figure 1 D,E. The only change was the substitution of BGE with phosphate buffer (pH 7, 4×10^{-3} mol L⁻¹) for rinsing of the capillary, which led to further reduction in EOF (Figure 2, curve 9). Separation of the mixture of all nine selected MRSA isolates is shown in Figure 3. This result confirmed the ability of the CE method to discriminate individual genotype groups of MRSA. In addition, partial separation of the isolates within individual genotype groups was observed as can be seen in the inset figures (zone details) in Figure 3. Almost complete separation of the isolates was observed in the group A where narrow peaks of the individual isolates were detected. The order of the isolate zones was determined experimentally by the standard addition method again. Only partial separation of the isolates was observed in the groups C and B. The order of the isolates in the zones of the groups C and B was therefore not further determined. Further optimization of the separation conditions did not improve the separation of the individual isolates of the groups C and B. Because of the higher conductivity of the phosphate buffer used to rinse the capillary, the migration times of the isolate zones increased (which agrees with our previous results [32]), the detected zones were very narrow and their resolution increased. All the MRSA isolates were also analyzed individually. Summary of the sample analyses is given in [Supplementary Table S1](#). The mean values of standard deviation (SD) and relative standard deviation (RSD) of the migration times of the bacteria zones calculated from all analyses were 13.25 s and 0.58 %, respectively. The proposed CE method enables reliable discrimination of the genotype groups of MRSA. In addition, the

1
2
3
4
5
6
7
8
9
10
11
12
13
14
15
16
17
18
19
20
21
22
23
24
25
26
27
28
29
30
31
32
33
34
35
36
37
38
39
40
41
42
43
44
45
46
47
48
49
50
51
52
53
54
55
56
57
58
59
60
61
62
63
64
65

obtained results suggest the possibility to separate individual isolates of a single genotype group.

3.3. MEKC separation of MRSA isolates of the genotype group A in a blood sample

Human blood sample was used in the next experiments to demonstrate the ability of the proposed CE method to analyze MRSA isolates in clinical samples. The blood sample was spiked with the examined MRSA isolates of the genotype group A (FS195, FS196 and FS197; concentration of each bacterium was 50 cells mL⁻¹), processed and analyzed by the optimized CE method (in the SCW-etched capillary at 20 °C). Schematic illustration of the procedure is shown in Figure 4. In this case, 100 µL of the prepared sample was dynamically injected into the capillary when the bacterial cells were adhered to the etched surface of the capillary and subsequently analyzed. The procedure enabling online concentration and separation of bacterial cells is described in detail in [32]. Three peaks of the MRSA isolates were detected upon the MEKC separation as shown in electropherogram in Figure 4. Their migration times were practically the same as in the analysis of the cultivated bacteria proving that the results obtained by this method are independent of the sample matrix. The recovery of the method was approximately 80 %.

4. Conclusion

MRSA isolates of three genotype groups differing in sequence type, *spa* type and type of staphylococcal chromosome cassette *mec* were separated in the FS capillary with a roughened inner surface. Experimental conditions were optimized to allow discrimination of the individual genotype groups, which was the main goal of this study. Especially the changes in separation

1 temperature and in the capillary rinsing procedure played the key role in the optimization
2 process. Whole analysis can be done in 60 min including sample preparation and rinsing of the
3 capillary. The developed method even enabled partial separation of the MRSA isolates within
4 individual genotype groups indicating the effect of phenotypic differences between strains.
5
6 However, their complete separation would require further extensive investigation. Similar
7 results were obtained by concentrating and separating the MRSA isolates in blood sample.
8
9 Recovery of the method was around 80 %.
10
11
12
13
14
15
16
17
18

19 **Acknowledgements**

20
21
22
23
24 This work was supported by Ministry of Health of the Czech Republic (Grant No. NU22-05-
25 00110), by the project National Institute of Virology and Bacteriology (Programme EXCELES,
26
27 ID Project No. LX22NPO5103) funded by the European Union - Next Generation EU, and by
28
29 the Czech Academy of Sciences (Institutional Support RVO:68081715).
30
31
32
33
34
35
36

37 **Declaration of competing interest**

38
39
40
41 The authors declare that they have no known competing financial interests or personal
42 relationships that could have appeared to influence the work reported in this paper.
43
44
45
46
47
48
49
50
51
52
53
54
55
56
57
58
59
60
61
62
63
64
65

References

- 1
2
3
4
5 [1] R.J. Gordon, F.D. Lowy, Pathogenesis of methicillin-resistant *Staphylococcus aureus*
6
7 infection, *Clinical Infectious Diseases* 46 (2008) S350-S359.
8
9
10
11
12 [2] F. Menichetti, Current and emerging serious Gram-positive infections, *Clinical*
13
14 *Microbiology and Infection* 11 (2005) 22-28.
15
16
17
18
19 [3] R.R. Watkins, M.Z. David, R.A. Salata, Current concepts on the virulence mechanisms of
20
21 methicillin-resistant *Staphylococcus aureus*, *Journal of Medical Microbiology* 61(9) (2012)
22
23 1179-1193.
24
25
26
27
28
29 [4] K.R. Kirker, G.A. James, P. Fleckman, J.E. Olerud, P.S. Stewart, Differential effects of
30
31 planktonic and biofilm MRSA on human fibroblasts, *Wound Repair and Regeneration* 20(2)
32
33 (2012) 253-261.
34
35
36
37
38
39 [5] L. Li, M.R. Yeaman, A.S. Bayer, Y.Q. Xiong, Phenotypic and Genotypic Characteristics of
40
41 Methicillin-Resistant *Staphylococcus aureus* (MRSA) Related to Persistent Endovascular
42
43 Infection, *Antibiotics-Basel* 8(2) (2019).
44
45
46
47
48
49 [6] Y.Q. Xiong, V.G. Fowler, M.R. Yeaman, F. Perdreau-Remington, B.N. Kreiswirth, A.S.
50
51 Bayer, Phenotypic and Genotypic Characteristics of Persistent Methicillin-Resistant
52
53 *Staphylococcus aureus* Bacteremia In Vitro and in an Experimental Endocarditis Model,
54
55 *Journal of Infectious Diseases* 199(2) (2009) 201-208.
56
57
58
59
60
61
62
63
64
65

1 [7] K. Seidl, A.S. Bayer, V.G. Fowler, J.A. McKinnell, W.A. Hady, G. Sakoulas, M.R. Yeaman,
2 Y.Q. Xiong, Combinatorial Phenotypic Signatures Distinguish Persistent from Resolving
3 Methicillin-Resistant *Staphylococcus aureus* Bacteremia Isolates, *Antimicrobial Agents and*
4 *Chemotherapy* 55(2) (2011) 575-582.
5
6

7
8
9
10
11 [8] M. Horka, M. Tesarova, P. Karasek, F. Ruzicka, V. Hola, M. Sittova, M. Roth,
12 Determination of methicillin-resistant and methicillin-susceptible *Staphylococcus aureus*
13 bacteria in blood by capillary zone electrophoresis, *Analytica Chimica Acta* 868 (2015) 67-72.
14
15
16

17
18
19
20
21 [9] F.C. Tenover, R. Arbeit, G. Archer, J. Biddle, S. Byrne, R. Goering, G. Hancock, G.A.
22 Hebert, B. Hill, R. Hollis, W.R. Jarvis, B. Kreiswirth, W. Eisner, J. Maslow, L.K. McDougal,
23 J.M. Miller, M. Mulligan, M.A. Pfaller, Comparison of Traditional and Molecular Methods of
24 Typing Isolates of *Staphylococcus aureus*, *Journal of Clinical Microbiology* 32(2) (1994) 407-
25 415.
26
27
28
29
30
31

32
33
34
35
36 [10] V.G. Fowler, G. Sakoulas, L.M. McIntyre, V.G. Meka, R.D. Arbeit, C.H. Cabell, M.E.
37 Stryjewski, G.M. Eliopoulos, L.B. Reller, G.R. Corey, T. Jones, N. Lucindo, M.R. Yeaman,
38 A.S. Bayer, Persistent bacteremia due to methicillin-resistant *Staphylococcus aureus* infection
39 is associated with agr dysfunction and low-level in vitro resistance to thrombin-induced platelet
40 microbicidal protein, *Journal of Infectious Diseases* 190(6) (2004) 1140-1149.
41
42
43
44
45
46
47
48
49

50
51 [11] B. Shopsin, M. Gomez, S.O. Montgomery, D.H. Smith, M. Waddington, D.E. Dodge, D.A.
52 Bost, M. Riehman, S. Naidich, B.N. Kreiswirth, Evaluation of protein A gene polymorphic
53 region DNA sequencing for typing of *Staphylococcus aureus* strains, *Journal of Clinical*
54 *Microbiology* 37(11) (1999) 3556-3563.
55
56
57
58
59
60
61
62

1
2 [12] T.M.A. Weller, Methicillin-resistant *Staphylococcus aureus* typing methods: which should
3
4 be the international standard?, *Journal of Hospital Infection* 44(3) (2000) 160-172.
5
6

7
8
9 [13] L. Challagundla, J. Reyes, I. Rafiqullah, D.O. Sordelli, G. Echaniz-Aviles, M.E.
10
11 Velazquez-Meza, S. Castillo-Ramirez, N. Fittipaldi, M. Feldgarden, S.B. Chapman, M.S.
12
13 Calderwood, L.P. Carvajal, S. Rincon, B. Hanson, P.J. Planet, C.A. Arias, L. Diaz, D.A.
14
15 Robinson, Phylogenomic Classification and the Evolution of Clonal Complex 5 Methicillin-
16
17 Resistant *Staphylococcus aureus* in the Western Hemisphere, *Frontiers in Microbiology* 9
18
19 (2018) 1901.
20
21
22
23

24
25
26 [14] A. Dreisbach, M.M. van der Kooi-Pol, A. Otto, K. Gronau, H.P.J. Bonarius, H. Westra, H.
27
28 Groen, D. Becher, M. Hecker, J.M. van Dijl, Surface shaving as a versatile tool to profile global
29
30 interactions between human serum proteins and the *Staphylococcus aureus* cell surface,
31
32 *Proteomics* 11(14) (2011) 2921-2930.
33
34
35

36
37
38 [15] A.I. Hartstein, V.H. Morthland, S. Eng, G.L. Archer, F.D. Schoenknecht, A.L. Rashad,
39
40 Restriction Enzyme Analysis of Plasmid DNA and Bacteriophage-Typing of Paired
41
42 *Staphylococcus aureus* Blood Culture Isolates, *Journal of Clinical Microbiology* 27(8) (1989)
43
44 1874-1879.
45
46
47

48
49
50 [16] A. Wieser, S. Schubert, MALDI-TOF MS entering the microbiological diagnostic
51
52 laboratory - from fast identification to resistance testing, *Trac-Trends in Analytical Chemistry*
53
54 84 (2016) 80-87.
55
56
57

1
2 [17] V. Sandalakis, I. Goniotakis, I. Vranakis, D. Chochlakis, A. Psaroulaki, Use of MALDI-
3 TOF mass spectrometry in the battle against bacterial infectious diseases: recent achievements
4 and future perspectives, *Expert Review of Proteomics* 14(3) (2017) 253-267.
5
6

7
8
9 [18] M. Wolters, H. Rohde, T. Maier, C. Belmar-Campos, G. Franke, S. Scherpe, M.
10 Aepfelbacher, M. Christner, MALDI-TOF MS fingerprinting allows for discrimination of
11 major methicillin-resistant *Staphylococcus aureus* lineages, *International Journal of Medical*
12 *Microbiology* 301(1) (2011) 64-68.
13
14
15
16
17

18
19
20
21 [19] O. Ueda, S. Tanaka, Z. Nagasawa, H. Hanaki, T. Shobuike, H. Miyamoto, Development
22 of a novel matrix-assisted laser desorption/ionization time-of-flight mass spectrum (MALDI-
23 TOF-MS)-based typing method to identify methicillin-resistant *Staphylococcus aureus* clones,
24 *Journal of Hospital Infection* 90(2) (2015) 147-155.
25
26
27
28
29
30

31
32
33 [20] C. Ostergaard, S.G.K. Hansen, J.K. Moller, Rapid first-line discrimination of methicillin
34 resistant *Staphylococcus aureus* strains using MALDI-TOF MS, *International Journal of*
35 *Medical Microbiology* 305(8) (2015) 838-847.
36
37
38
39
40

41
42
43 [21] M. Sauget, B. Valot, X. Bertrand, D. Hocquet, Can MALDI-TOF Mass Spectrometry
44 Reasonably Type Bacteria?, *Trends in Microbiology* 25(6) (2017) 447-455.
45
46
47
48
49

50
51 [22] V. Paskova, K. Chudejova, A. Sramkova, L. Kraftova, V. Jakubu, E.A. Petinaki, H.
52 Zemlickova, K. Neradova, C.C. Papagiannitsis, J. Hrabak, Insufficient repeatability and
53 reproducibility of MALDI-TOF MS-based identification of MRSA, *Folia Microbiologica* 65(5)
54 (2020) 895-900.
55
56
57
58
59
60

1 [23] A. Pfetsch, T. Welsch, Determination of the electrophoretic mobility of bacteria and their
2 separation by capillary zone electrophoresis, *Fresenius Journal of Analytical Chemistry* 359(2)
3
4 (1997) 198-201.
5
6

7
8
9 [24] M. Horka, P. Karasek, F. Ruzicka, M. Dvorackova, M. Sittova, M. Roth, Separation of
10
11
12
13
14
15
16
17
18
19
20
21
22
23
24
25
26
27
28
29
30
31
32
33
34
35
36
37
38
39
40
41
42
43
44
45
46
47
48
49
50
51
52
53
54
55
56
57
58
59
60
61
62
63
64
65

[24] M. Horka, P. Karasek, F. Ruzicka, M. Dvorackova, M. Sittova, M. Roth, Separation of
Methicillin-Resistant from Methicillin-Susceptible *Staphylococcus aureus* by Electrophoretic
Methods in Fused Silica Capillaries Etched with Supercritical Water, *Analytical Chemistry*
86(19) (2014) 9701-9708.

[25] A.T. Poortinga, R. Bos, W. Norde, H.J. Busscher, Electric double layer interactions in
bacterial adhesion to surfaces, *Surface Science Reports* 47(1) (2002) 3-32.

[26] H.H.M. Rijnaarts, W. Norde, J. Lyklema, A.J.B. Zehnder, The Isoelectric Point of Bacteria
as an Indicator for the Presence of Cell-Surface Polymers that Inhibit Adhesion, *Colloids and
Surfaces B-Biointerfaces* 4(4) (1995) 191-197.

[27] D.W. Armstrong, G. Schulte, J.M. Schneiderheinze, D.J. Westenberg, Separating microbes
in the manner of molecules. 1. Capillary electrokinetic approaches, *Analytical Chemistry*
71(24) (1999) 5465-5469.

[28] A. Roosjen, H.J. Kaper, H.C. van der Mei, W. Norde, H.J. Busscher, Inhibition of adhesion
of yeasts and bacteria by poly(ethylene oxide)-brushes on glass in a parallel plate flow chamber,
Microbiology 149 (2003) 3239-3246.

1 [29] M.J. Desai, D.W. Armstrong, Separation, identification, and characterization of
2 microorganisms by capillary electrophoresis, *Microbiology and Molecular Biology Reviews*
3
4 67(1) (2003) 38-51.
5
6

7
8
9 [30] M. Horka, P. Karasek, M. Roth, F. Ruzicka, Pre-concentration and separation of bacteria
10 by volume coupling electrophoresis on supercritical water-etched fused silica capillary with
11
12 two segments of different internal diameters and inner surface roughnesses, *Analytical and*
13
14 *Bioanalytical Chemistry* 410(1) (2018) 167-175.
15
16
17

18
19
20
21 [31] M. Horka, P. Karasek, M. Roth, K. Slais, Fused silica capillaries with two segments of
22 different internal diameters and inner surface roughnesses prepared by etching with
23
24 supercritical water and used for volume coupling electrophoresis, *Electrophoresis* 38(9-10)
25
26 (2017) 1260-1267.
27
28
29

30
31
32
33 [32] M. Horka, J. Salplachta, P. Karasek, F. Ruzicka, M. Roth, Online Concentration of Bacteria
34 from Tens of Microliter Sample Volumes in Roughened Fused Silica Capillary with Subsequent
35
36 Analysis by Capillary Electrophoresis and Matrix-Assisted Laser Desorption/Ionization Time-
37
38 of-Flight Mass Spectrometry, *Acs Infectious Diseases* 6(3) (2020) 355-365.
39
40
41
42

43
44
45 [33] A. Rogacs, J.G. Santiago, Temperature Effects on Electrophoresis, *Analytical Chemistry*
46
47 85(10) (2013) 5103-5113.
48
49
50

51
52
53 [34] M. Horka, K. Slais, P. Karasek, F. Ruzicka, J. Salplachta, J. Sestak, V. Kahle, M. Roth,
54
55 Capillary electrophoresis in a fused-silica capillary with surface roughness gradient, *Journal of*
56
57 *Separation Science* 39(19) (2016) 3827-3834.
58
59
60

1
2 [35] P. Karasek, M. Horka, K. Slais, J. Planeta, M. Roth, Supercritical water-treated fused silica
3
4 capillaries in analytical separations: Status review, *Journal of Chromatography A* 1539 (2018)
5
6
7 1-11.

8
9
10
11 [36] J. Salplachta, A. Kubesova, M. Horka, Latest improvements in CIEF: From proteins to
12
13 microorganisms, *Proteomics* 12(19-20) (2012) 2927-2936.
14
15
16

17
18
19 [37] M.C. Enright, N.P.J. Day, C.E. Davies, S.J. Peacock, B.G. Spratt, Multilocus sequence
20
21 typing for characterization of methicillin-resistant and methicillin-susceptible clones of
22
23 *Staphylococcus aureus*, *Journal of Clinical Microbiology* 38(3) (2000) 1008-1015.
24
25
26

27
28
29 [38] C. Cuny, M.M.H. Abdelbary, R. Kock, F. Layer, W. Scheidemann, G. Werner, W. Witte,
30
31 Methicillin-resistant *Staphylococcus aureus* from infections in horses in Germany are frequent
32
33 colonizers of veterinarians but rare among MRSA from infections in humans, *One Health* 2
34
35 (2016) 11-17.
36
37
38

39
40
41 [39] K. Neradova, M. Fridrichova, V. Jakub, K. Pomorska, H. Zemlickova, Epidemiological
42
43 characteristics of methicillin-resistant *Staphylococcus aureus* isolates from bloodstream
44
45 cultures at University Hospital in the Czech Republic, *Folia Microbiologica* 65(3) (2020) 615-
46
47
48 622.
49
50
51

52
53 [40] H. Grundmann, D.M. Aanensen, C.C. van den Wijngaard, B.G. Spratt, D. Harmsen, A.W.
54
55 Friedrich, R. European Staphylococcal Reference Laboratory Working Group, Geographic
56
57
58
59
60
61

1
2
3
4
5
6
7
8
9
10
11
12
13
14
15
16
17
18
19
20
21
22
23
24
25
26
27
28
29
30
31
32
33
34
35
36
37
38
39
40
41
42
43
44
45
46
47
48
49
50
51
52
53
54
55
56
57
58
59
60
61
62
63
64
65

Distribution of *Staphylococcus aureus* Causing Invasive Infections in Europe: A Molecular-Epidemiological Analysis, Plos Medicine 7(1) (2010) e1000215.

[41] M. Horka, F. Ruzicka, V. Hola, K. Slais, Capillary isoelectric focusing of microorganisms in the pH range 2–5 in a dynamically modified FS capillary with UV detection, Analytical and Bioanalytical Chemistry 385(5) (2006) 840-846.

[42] J. Salplachta, M. Horka, P. Karasek, F. Ruzicka, M. Roth, Identification of *Aspergillus* Conidia in Bronchoalveolar Lavage Using Offline Combination of Capillary Electrophoresis in Supercritical Water-Treated Fused Silica Capillary and Matrix-Assisted Laser Desorption/Ionization Time-of-Flight Mass Spectrometry, Analytical Chemistry 92(11) (2020) 7588-7595.

[43] M. Horka, P. Karasek, J. Salplachta, F. Ruzicka, D. Stverakova, R. Pantucek, M. Roth, Nano-etched fused-silica capillary used for on-line preconcentration and electrophoretic separation of bacteriophages from large blood sample volumes with off-line MALDI-TOF mass spectrometry identification, Microchimica Acta 187(3) (2020) 177.

[44] M. Rezaei, A.R. Azimian, D.T. Semiromi, The surface charge density effect on the electro-osmotic flow in a nanochannel: a molecular dynamics study, Heat and Mass Transfer 51(5) (2015) 661-670.

[45] N. Kumar, J.H. Arakeri, Experimental investigation of effect of orientation and surface roughness on drying of porous media consisting of rods, International Journal of Multiphase Flow 109 (2018) 114-122.

Tables

Table S1. Reproducibility of the migration times of the individual MRSA isolates belonging to the different genotype groups (A, B, and C). The separation conditions were the same as in the analysis shown in Figure 3.

Genotype	A			B			C		
Isolate	FS197	FS196	FS195	FS180	FS183	FS193	FS198	FS199	FS200
Run No.	Migration time [s]								
1	2207	2233	2231	2354	2334	2356	2272	2292	2315
2	2239	2230	2238	2321	2338	2341	2255	2269	2298
3	2242	2228	2259	2309	2341	2336	2262	2287	2309
4	2218	2217	2219	2322	2339	2338	2266	2303	2304
5	2244	2234	2225	2308	2358	2352	2304	2299	2273
6	2210	2241	2209	2340	2343	2355	2301	2306	2318
7	2231	2235	2225	2312	2335	2343	2275	2312	2316
8	2208	2236	2248	2318	2339	2361	2278	2279	2269
9	2223	2219	2251	2351	2350	2360	2281	2287	2287
10	2212	2216	2254	2323	2348	2356	2275	2313	2314
Mean	2223.4	2228.9	2235.9	2325.8	2342.5	2349.8	2276.9	2294.7	2300.3
value		2229.4			2339.4			2295.3	
SD [s]	13.84	8.28	15.85	16.76	7.47	8.90	15.58	14.46	18.14
RSD [%]	0.66	0.37	0.71	0.72	0.32	0.38	0.68	0.63	0.79

1
2
3
4
5
6
7
8
9
10
11
12
13
14
15
16
17
18
19
20
21
22
23
24
25
26
27
28
29
30
31
32
33
34
35
36
37
38
39
40
41
42
43
44
45
46
47
48
49
50
51
52
53
54
55
56
57
58
59
60
61
62
63
64
65

Figure captions

Figure 1. MEKC separation of MRSA genotype groups, A, B and C, and SEM images of the inner capillary surfaces; (A–D) optimization of the separation conditions, (E) detail view of the MEKC separation of the individual isolates of the genotype groups, A, B and C.

Figure 2. The effect of pH on the electroosmotic mobility in the smooth (curves 1 and 2) and SCW-etched FS capillary (curves 3–9) with respect to the BGE composition, rinsing procedure and temperature of the separation; neutral marker of EOF, thiourea; UV detection, 235 nm.

Figure 3. Separation of the individual MRSA isolates of the genotype groups A, B, and C under the optimized MEKC conditions. Detail view of the detected zones of the isolates.

Figure 4. Separation of MRSA isolates FS195, FS196 and FS197 (genotype group A) from spiked blood.

MEKC of MSSA and MRSA (genotype groups)

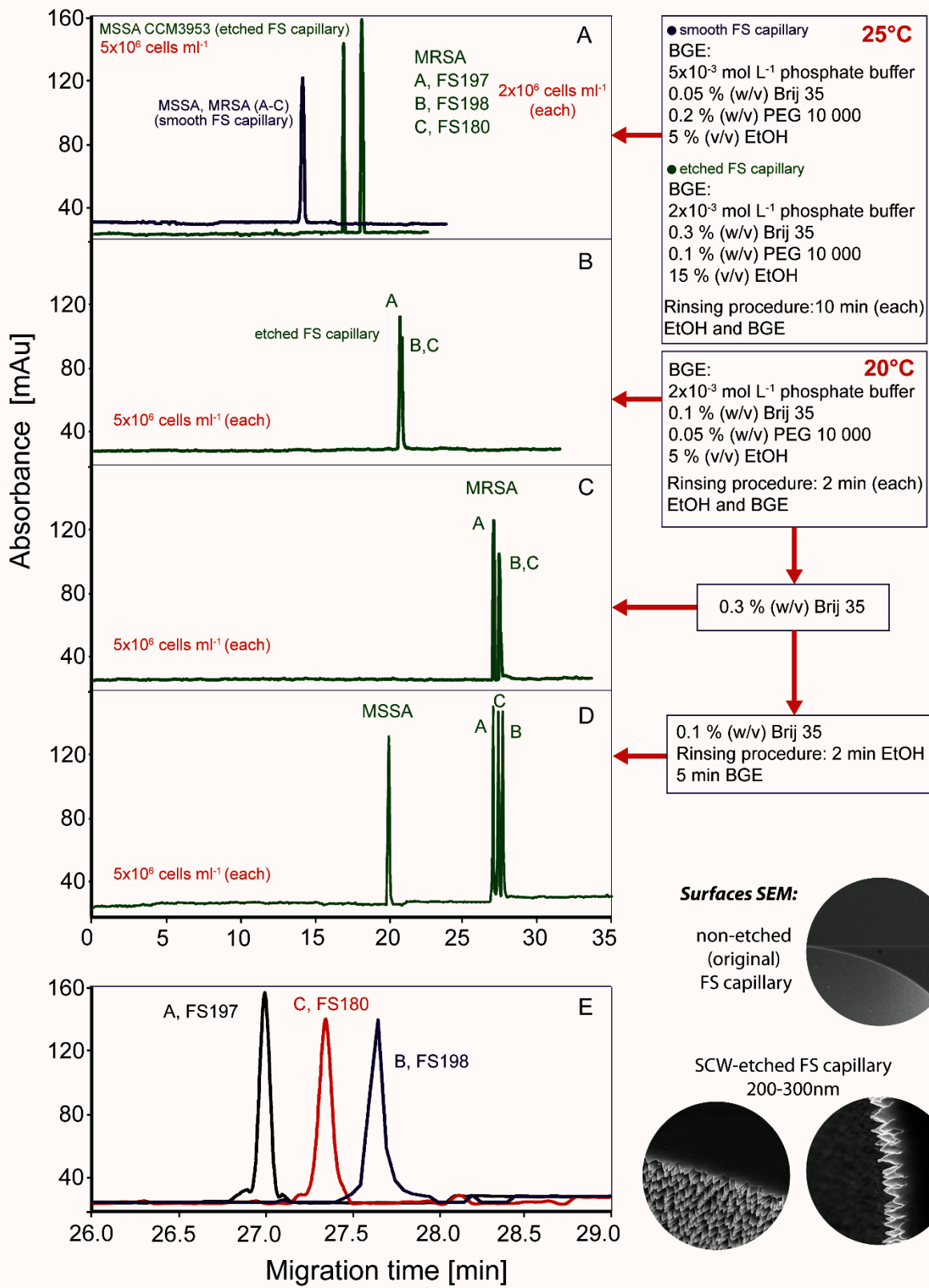


Figure 1

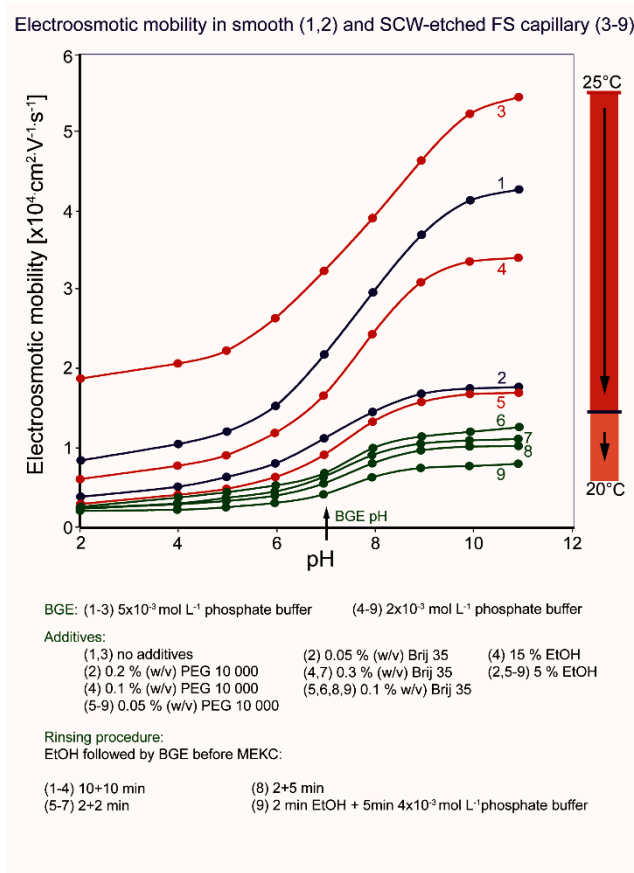


Figure 2

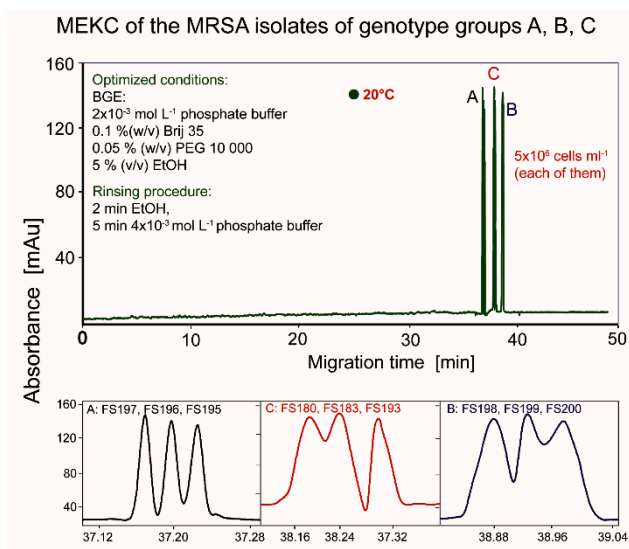


Figure 3

1
2
3
4 **MRSA, strains FS 195, FS 196 and FS 197 in blood**

5 *Sample preparation*

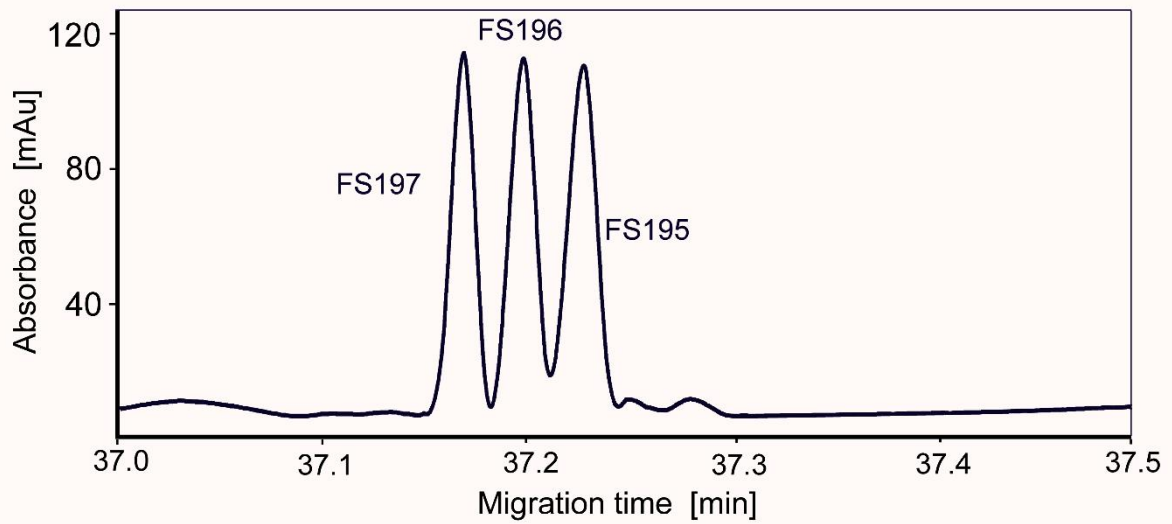
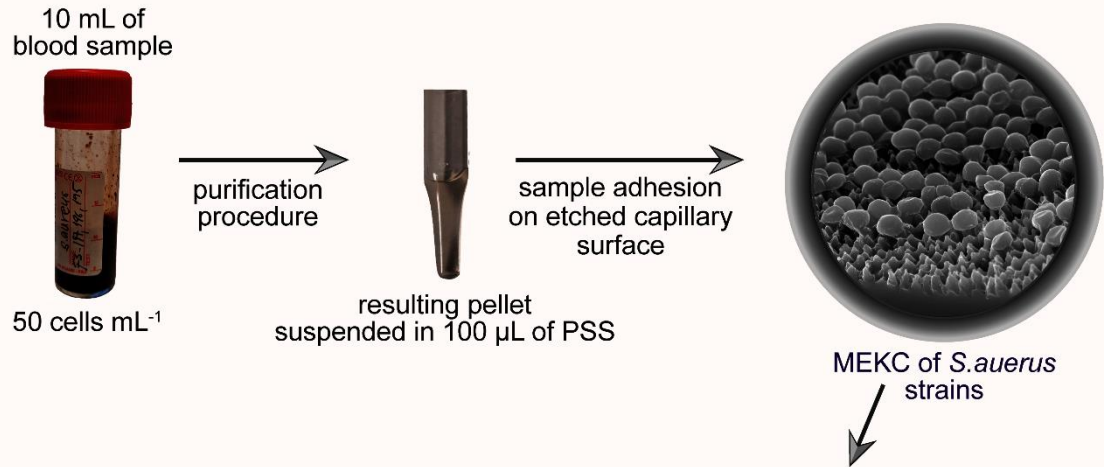


Figure 4

1
2
3
4
5
6
7 **Capillary Electrophoretic Methods for Classification of Methicillin-Resistant**
8 ***Staphylococcus aureus* (MRSA) Clones**

9 Marie Horká,^a Filip Růžička,^b Alena Siváková,^b Pavel Karásek,^a Jiří Šalplachta,^{a,*} Roman
10 Pantůček,^c and Michal Roth^a

11
12
13
14 Addresses

15
16
17 ^aInstitute of Analytical Chemistry of the CAS, Veveří 97, 602 00 Brno, Czech Republic

18
19 ^bDepartment of Microbiology, Faculty of Medicine, Masaryk University, Kamenice 5, 625 00
20
21 Brno, Czech Republic

22
23
24 ^cDepartment of Experimental Biology, Faculty of Science, Masaryk University, Kotlářská 2,
25
26 611 37 Brno, Czech Republic

27
28
29
30
31
32
33
34 *Corresponding author:

35
36 Institute of Analytical Chemistry of the Czech Academy of Sciences, Veveří 97, Brno, 60200,
37
38 Czech Republic

39
40
41 email: salplachta@iach.cz

42
43
44 phone number: 00420 532 290 213

ABSTRACT

This study describes differentiation of methicillin-resistant *Staphylococcus aureus* (MRSA) isolates belonging to different genotype groups by the combination of electrophoretic techniques, transient isotachopheresis and micellar electrokinetic chromatography. MRSA isolates were separated in fused silica capillary with roughened inner surface prepared by etching with supercritical water. Separation temperature together with the rinsing procedure of the capillary turned out to be the key factors of successful analysis. The individual genotype groups were baseline-resolved in forty minutes. Partial separation of the individual isolates within the groups was also observed. Relative standard deviations of the migration times of the isolate zones ranged from 0.32 to 0.79 %. In addition, capability of the developed CE method to concentrate and separate MRSA isolates in clinical samples was proved by the analysis of blood sample.

Keywords: capillary electrophoresis; classification; fused silica capillary; separation; *Staphylococcus aureus*; temperature

Abbreviations: *agr*, accessory gene regulator typing; BGE, background electrolyte; CCM, Czech Collection of Microorganisms; EtOH, ethanol; FS, fused silica; MLST, multi-locus sequence typing; MRSA, methicillin-resistant *S. aureus*; MSSA, methicillin-susceptible *S. aureus*; PCR, polymerase chain reaction; PSS, physiological saline solution; *S. aureus*, *Staphylococcus aureus*; *SCCmec*, Staphylococcal Cassette Chromosome *mec* (chromosomal island involved in methicillin resistance); SCW, supercritical water; *spa*, staphylococcal protein A gene; ST, sequence type; tITP, transient isotachopheresis.

1. Introduction

Staphylococcus aureus is a Gram-positive bacterium that can cause a wide spectrum of nosocomial infections associated with significant morbidity, mortality and also high medical care costs [1]. The morbidity increases as the therapeutic efficacy of the available antibiotics decreases, which is related to the increased occurrence of multidrug-resistant methicillin-resistant *Staphylococcus aureus* (MRSA) [2]. *S. aureus* produces many virulence factors that contribute to the higher incidence of staphylococcal infections. These factors include surface proteins involved in establishing an infection, secreted compounds necessary for an outbreak of the infection, and biofilm formation that enable bacteria to adhere to various surfaces and protects the bacterium against host defenses and antimicrobials [3,4].

Specific phenotypic and genotypic characteristics of MRSA may play an important role in the serious infections [5-7]. The genotypically similar MRSA isolates can be classified into individual groups (clones) on the basis of their genotype profiles. MRSA isolates belonging to the single genotype group can have different phenotypic characteristics [5,7]. Various methods are used for the genotypic and phenotypic characterization of MRSA isolates [5,8,9]. Pulsed-field gel electrophoresis (PFGE) macrorestriction profile, multi-locus sequence type (MLST), staphylococcal protein A (*spa*) type, staphylococcal cassette chromosome *mec* (SCC*mec*), accessory gene regulator (*agr*) group, and capsular polysaccharide type are associated with particular clonal complex [10]. Additional genotyping methods such as Polymerase Chain Reaction (PCR) gene typing, repetitive element sequence-based PCR, plasmid analysis, or toxin gene profiling are used [11]. These methods are relatively rapid with good reproducibility and repeatability [12]. Nowadays, most techniques can be replaced by whole genome sequencing but it is relatively expensive, time-consuming, and requiring considerable expertise in data analysis [13]. Despite many genotyping methods developed for MRSA typing, there is no single

1 rapid technique with sufficient discriminatory power. Generally, low discrimination ability,
2 technical complexity, difficult interpretation of the results, and high analysis costs are among
3 the main disadvantages of the genotyping methods. Phenotyping methods include pathogen-
4 drug and pathogen-host interactions, serotyping, protein electrophoresis and surface protein
5 shaving [8, 9, 14]. Cultivation methods are easy to perform, cheap, and readily available in the
6 clinical laboratories. On the other hand, these methods are often time-consuming with poor
7 discriminatory ability [9, 12, 15]. A promising phenotyping tool is matrix-assisted laser
8 desorption/ionization time-of-flight mass spectrometry (MALDI-TOF MS). This technique has
9 been used for a fast and low-cost microbial species identification [16,17]. Although several
10 authors demonstrated the ability of MALDI-TOF MS to identify MRSA [18-20], other authors
11 reported poor reliability of the MALDI-based methods excluding MALDI-TOF MS from the
12 use in routine laboratory [21, 22].

13
14
15
16
17
18
19
20
21
22
23
24
25
26
27
28
29 Capillary electrophoretic methods (CE) have proven to be suitable alternative to commonly
30 used microbiological methods for the analysis of bacteria including *S. aureus* [8, 23, 24]. In
31 general, bacteria are separated on the basis of the differences in the electrophoretic cell
32 mobilities, which depend on the charge of the outer cell surface [23]. Bacterial outer surface is
33 electrically charged under most conditions as it carries various dissociable groups (amino acid
34 residues, carbohydrate moieties, etc.). When an electric field is applied, bacterial cells move
35 with a velocity related to their electrophoretic cell mobilities and, thus, their separation occurs
36 [23]. Microbial cell electric properties can be characterized by zeta potential (ζ), which is related
37 to the electrophoretic mobility of the cells. The value of ζ is strongly dependent on chemical
38 and physical environmental factors [25]. Chemical composition of cell surface [26],
39 composition of background electrolyte (BGE) including additives (e.g., polyethylene glycol,
40 PEG, non-ionogenic surfactant Brij 35) [27-32], pH of the BGE, sample matrix, inner surface
41 structure of the capillary (rough or smooth) [8, 24], and the separation temperature [33] are
42
43
44
45
46
47
48
49
50
51
52
53
54
55
56
57
58
59
60
61
62
63
64
65

1 among these factors. CE was utilized to differentiate between methicillin-susceptible *S. aureus*
2 (MSSA) and MRSA strains in our previous studies.
3

4 In this study, capillary electrophoretic techniques were used for the differentiation of the
5 genotypically different clones of MRSA. Simultaneously, the MSSA cells were used for
6 comparison of the mobility change during the method optimization. The combination of
7 polymer-enhanced transient isotachopheresis (tITP) [31] from a high conductivity matrix and
8 sweeping of the charged cells in micellar electrokinetic chromatography (MEKC) [30-32] was
9 used for this purpose. The analyses were performed in a fused silica (FS) capillary with a
10 roughened part prepared by etching with supercritical water (SCW) [8, 24, 30, 31, 34-36].
11
12
13
14
15
16
17
18
19
20
21
22
23

24 **2. Materials and methods**

25 *2.1. Chemicals*

26
27
28
29 Most of the chemicals, including non-ionogenic detergent Brij 35 and ethanol (EtOH), were
30 purchased from Sigma (St. Louis, MO). Polyethylene glycol (M_r 10 000, PEG 10 000) was
31 obtained from Aldrich (Milwaukee, WI). All chemicals were of electrophoresis or analytical
32 grade purity.
33
34
35
36
37
38
39
40
41
42
43
44

45 *2.2. Preparation of etched fused silica capillaries*

46
47
48
49
50
51 The experimental setup for preparation of etched capillaries has already been described [35].
52
53 This type of structure can be defined as a set of conical formations lying close together with a
54 base of 150 nm and a height between 200 and 300 nm. For SCW etching, the ultra-pure water
55 at a density of 0.298 g cm^{-3} was used, created in a short heated zone at $420 \text{ }^\circ\text{C}$ and 340 bar. The
56
57
58
59
60
61
62
63
64
65

1 linear rate of capillary movement was set to 55 mm min⁻¹ and each point of silica surface was
2 etched for a period of 600 ms. Commercial FS capillaries, 50 µm i.d. and 360 µm o.d., were
3 delivered by Agilent Technologies (Waldbronn, Germany). Purification of water consisted of a
4 single distillation followed by reverse osmosis (Ultra Clear UV, SG Wasseraufbereitung und
5 Regenerierstation GmbH, Barsbüttel, Germany). The resultant value of water conductivity was
6 kept below 0.055 µS cm⁻¹, the total concentration of organic compounds was below 3 ppb, and
7 the dissolved gases were removed by stripping with a gentle stream of helium (purity 4.8, Siad
8 Czech spol. s r.o.).
9
10
11
12
13
14
15
16
17
18
19
20
21

22 *2.3. Bacterial strains and growth conditions*

23
24
25
26

27 The bacteria were isolated from various human or veterinary clinical samples from the Czech
28 Republic and stored in Collection of Microbiology Institute, Masaryk University and St. Anne's
29 University Hospital (Brno, Czech Republic). The MRSA isolates were genotypically
30 characterized on the basis of MLST analysis [37] of the staphylococcal chromosome cassette
31 containing *SCCmec* and the *spa* typing method that is based on sequencing of the polymorphic
32 X region of the protein A gene (*spa*) [11]. The MSSA strain CCM 3953 was obtained from
33 Czech Collection of Microorganisms (Brno, Czech Republic). The strain was used for
34 comparison of the mobility change during the optimization procedure. Three isolates of each of
35 three MRSA genotype groups were involved in this study: group A - ST8/t064/*SCCmec*-IV
36 (FS195, FS196, FS197), group B - ST239/t037/*SCCmec*-III (FS198, FS199, FS200), and group
37 C - ST225/t003/*SCCmec*-II (FS180, FS183, FS193). Type ST8/t064/*SCCmec*-IV was reported
38 in veterinary samples (horses) from the United States and from some other countries [38].
39 ST239/t037/*SCCmec*-III is probably the oldest pandemic MRSA type, circulating in many
40 countries since the 1970s. It is still frequently isolated worldwide. ST225/t003/*SCCmec*-II is a
41
42
43
44
45
46
47
48
49
50
51
52
53
54
55
56
57
58
59
60
61
62
63
64
65

1
2
3
4
5
6
7
8
9
10
11
12
13
14
15
16
17
18
19
20
21
22
23
24
25
26
27
28
29
30
31
32
33
34
35
36
37
38
39
40
41
42
43
44
45
46
47
48
49
50
51
52
53
54
55
56
57
58
59
60
61
62
63
64
65

typical nosocomial type and was predominant in the Czech Republic [39]. This type is also common in other European countries [40].

The tested isolates were cultivated on Mueller-Hinton agar (Oxoid, United Kingdom) at 37 °C for 24 h and the standardized bacterial suspensions were prepared as described previously [8]. Concentrations of the bacteria were determined by measurement of the optical density of the bacterial suspensions using a DU 520 UV-Vis spectrophotometer (Beckmann Instruments, Palo Alto, CA, USA) operating at 550 nm, according to the calibration curve, which was defined by the reference samples. Required sample concentrations were achieved by serial dilution of the prepared suspensions (10^7 cells mL⁻¹) with physiological saline solution (PSS, 0.85 % (w/v) NaCl). Human blood (group 0, Blood Bank of St. Anne's University Hospital in Brno, Czech Republic) was spiked with the bacterial cells. The preparation of blood samples prior to CE analysis was performed as described in our previous study [8]. Ten mL of the blood sample was spiked with 500 cells of each examined MRSA isolates of the genotype group A, FS195, FS196 and FS197, thus the concentration of each isolate in the prepared sample was 50 cells mL⁻¹. The sample was then processed according to the published procedure [8]. The pellet obtained after the purification steps, containing 500 cells of each isolate, was re-suspended in 100 µL of PSS and analyzed.

2.4. Safety considerations

The potentially pathogenic bacteria analyzed in this work belong to the risk group 2 of infectious agents. Although they can possibly cause a human disease, they do not present serious hazard to lab personnel under normal circumstances. Biological safety level 2 was maintained throughout the work with the living bacterial cultures. All experiments were

1 performed according to the instructions for the work with infective materials and the use of the
2 latex gloves and regular disinfection of the laboratory equipment was maintained to avoid any
3
4 contamination by microorganisms.
5
6

7 8 9 *2.5. MEKC equipment and procedures*

10
11
12
13
14 A laboratory-made apparatus [41] operated at a constant voltage (-20 kV on the detector side)
15 supplied with a Spellman CZE 1000 R high-voltage unit (Plainview, NY, USA) was used for
16
17 the electrophoretic experiments. The experiments were performed in the smooth (untreated) FS
18
19 capillary and the FS capillary with roughened part at 20 or 25 °C. The FS capillary was 500 mm
20
21 long, the distance between anode and the detection window was 350 mm. The FS capillary with
22
23 roughened part was etched with SCW in the length of 250 mm from the anode side. The ends
24
25 of the capillary and the electrodes were placed in 3-mL glass vials filled with BGE. The non-
26
27 etched part of the capillary was orientated toward the cathode side. A LCD 2082 on-column
28
29 UV-Vis detector (Ecom, Prague, Czech Republic), connected to the detection cell by optical
30
31 fibers (Polymicro Technologies, Phoenix (AZ), USA), was operated at 235 or 280 nm. The
32
33 detector signals were acquired and processed with the Clarity Chromatography Station (version
34
35 2.6.3.313, DataApex, Prague, Czech Republic). Each experiment was repeated ten times.
36
37
38
39
40
41
42
43

44 The BGE was composed of phosphate buffer (pH 7, 2×10^{-3} or 5×10^{-3} mol L⁻¹) and dissolved
45
46 additives, EtOH (5–15 % (v/v)), PEG 10 000 (0.05–0.2 % (w/v)), and Brij 35 (0.05–0.3 %
47
48 (w/v)). The examined MSSA and MRSA cells were suspended in PSS and vortexed using
49
50 Thermomixer comfort (Eppendorf, Hamburg, Germany) at 25 °C for 2 min before analysis. The
51
52 samples (100 nL) were injected into the capillary using the single-syringe infusion pump (Cole-
53
54 Parmer, Vernon Hills, USA) at a flow rate of 1 μ L min⁻¹ from the anodic side. With respect to
55
56 the blood sample, the dynamic adhesion of the cells from the prepared blood sample onto the
57
58
59
60
61
62
63
64
65

1 inner capillary surface was used [32]. In this case, 100 μL of the prepared sample (cell pellet
2 suspended in 100 μL of PSS as described above) was dynamically injected into the capillary.
3
4 Thiourea was used as a neutral marker of electroosmotic flow (EOF) in the measurements of
5 the dependence of pH on the electroosmotic mobility, μ_{EOF} , at the temperatures of 20 or 25 $^{\circ}\text{C}$.
6
7

8
9 Before each MEKC run, the capillary was rinsed with EtOH (2–10 min) and then back-
10 flushed with BGE or $4 \times 10^{-3} \text{ mol L}^{-1}$ phosphate buffer, pH 7 (2–10 min). The rinsing was
11 performed using the single-syringe infusion pump attached to the cathodic side of the capillary.
12
13 Rinsing with each fluid consisted of two steps. At the first step, the capillary was rinsed with
14 10 μL of the particular fluid at a flow rate of $10 \mu\text{L min}^{-1}$. At the second step, the particular
15 fluid was left in the capillary for 1–9 min, i.e. the rest of the total rinsing time. This procedure
16 ensured sufficient desorption of the potentially adhered bacterial cells from the roughened
17 capillary surface before next analysis.
18
19
20
21
22
23
24
25
26
27
28
29
30

31 **3. Results and discussion**

32 *3.1. MEKC separation of genotypically different groups of MRSA*

33
34
35
36
37 Successful discrimination of MSSA and MRSA strains by CE in the SCW-etched FS capillary
38 in our previous studies [8, 24] led to the idea to investigate the ability of CE for phenotyping of
39 MRSA isolates. The experiments described in this study were designed and performed on the
40 basis of our experience with CE analysis of various microorganisms utilizing SCW-etched FS
41 capillary [8, 24, 32, 42, 43]. Three MRSA isolates (FS197, FS198, and FS180) belonging to
42 different genotype groups, ST8/t064/*SCCmec*-IV, ST239/t037/*SCCmec*-III, and
43 ST225/t003/*SCCmec*-II, designated group A, B, and C, respectively, and one MSSA strain were
44 selected for the method development. The strains were separated by MEKC in both smooth FS
45
46
47
48
49
50
51
52
53
54
55
56
57
58
59
60
61
62
63
64
65

1 capillary and the SCW-etched FS capillary (Figure 1A). With respect to the different properties
2 of the inner surfaces, different BGE composition (concentration of phosphate buffer and
3
4 additives, PEG 10 000, Brij 35, and EtOH) had to be used for both types of capillaries for
5
6 successful analysis of the examined bacteria. The temperature of separation and rinsing
7
8 procedure were identical. In contrast to the smooth FS capillary, the SCW-etched FS capillary
9
10 allowed separation of MSSA from MRSA strains. Further optimization of the experimental
11
12 conditions (BGE composition, separation temperature, rinsing procedure) did not improve the
13
14 separation of the analyzed MSSA and MRSA in the smooth FS capillary. Just a single peak was
15
16 observed when the analysis was performed in the smooth FS capillary regardless of separation
17
18 conditions used. The SCW-etched FS capillary, on the other hand, provided promising results
19
20 as shown in Figure 1.
21
22
23
24
25

26
27 Roughened surface of the SCW-etched FS capillary had a positive effect on the separation
28
29 of the MSSA strain from the MRSA isolates, although the EOF in the roughened capillary was
30
31 significantly higher using phosphate buffer without additives as BGE. The lower the EOF is
32
33 achieved the better separation of the bacteria can be observed. Figure 2 shows a comparison of
34
35 the EOF in the smooth FS capillary (curve 1) and in the etched FS capillary (curve 3) at 25 °C.
36
37 The use of BGE additives significantly reduced the EOF in the SCW-etched FS capillary
38
39 (Figure 2, curve 4 vs. curve 3), but it was still higher than in the smooth FS capillary (Figure 2,
40
41 curve 2). The experimental conditions were further optimized to lower the EOF. Decrease in
42
43 additive concentration together with the shorter rinsing procedure in the case of SCW-etched
44
45 FS capillary led to another significant decrease of the EOF (Figure 2, curve 5 vs. curve 4). The
46
47 achieved EOF was approximately a fifth lower (at pH 7) than the EOF in the smooth FS
48
49 capillary (Figure 2, curve 2). However, even significantly reduced EOF did not improve the
50
51 separation and only single zone of the MRSA isolates was detected again (data not shown).
52
53
54
55
56
57
58
59
60
61
62
63
64
65

1
2 In an effort to separate the MRSA isolates, the temperature of separation was decreased to
3 20 °C. This led to a further decrease in the EOF (by fifth again at pH 7) at the same BGE
4 composition as in the previous case (Figure 2, curve 6 vs. curve 5). Consequently, slightly better
5 MRSA isolates separation (three overlapping peaks) was observed (Figure 1B). The increase in
6 the concentration of Brij 35 to 0.3 % (w/v) in the BGE caused a slight reduction of the EOF
7 (Figure 2, curve 7 vs curve 6) and, thus, even better separation of the MRSA isolates
8 (Figure 1C). The isolate of the group A was separated from the co-eluting isolates of the groups
9 B and C. The order of the isolate zones was determined experimentally by the standard addition
10 method. Figure 1D shows complete separation of the MRSA isolates belonging to the
11 individual genotype groups and also more distinctive separation of MSSA strain from the
12 MRSA isolates (in comparison to the result shown in Figure 1A, etched capillary). This result
13 was achieved when the concentration of Brij 35 was decreased to 0.1 % (w/v) and the rinsing
14 procedure was changed again – 2 min with EtOH and 5 min with BGE. Under these conditions,
15 a further drop of the EOF (Figure 2, curve 8) was observed which corresponded to half the EOF
16 value at pH 7 in the smooth FS capillary at 25 °C (Figure 2, curve 2). Figure 1E shows the
17 detected zones of the MRSA isolates of different genotype groups in detail. The MRSA isolates
18 were analyzed individually for this purpose. The same migration times of the analyzed isolates
19 were achieved as in the case of analysis of the isolate mixture. The obtained results confirmed
20 that surface roughness together with separation temperature [33] and capillary rinsing method
21 significantly affect bacterial separations. Beside the decrease in the EOF, the decrease in the
22 temperature of separation also induced changes in diffusion and other physico-chemical
23 properties of the entire separation system – BGE, roughened capillary surface and bacterial
24 cells [44, 45]. This enabled the separation of different types of bacterial cells under the properly
25 selected separation conditions. With respect to the achieved results, the following experiments
26 were performed in the etched capillary at 20 °C.
27
28
29
30
31
32
33
34
35
36
37
38
39
40
41
42
43
44
45
46
47
48
49
50
51
52
53
54
55
56
57
58
59
60
61
62
63
64
65

3.2. MEKC separation of individual MRSA isolates within individual genotype groups

Three MRSA isolates of each genotype group (A – FS195, FS196, FS197; B – FS180, FS183, FS193; C – FS198, FS199, FS200) were selected for the next MEKC experiments. The BGE composition and other experimental conditions were essentially the same as in the experiments shown in Figure 1 D,E. The only change was the substitution of BGE with phosphate buffer (pH 7, 4×10^{-3} mol L⁻¹) for rinsing of the capillary, which led to further reduction in EOF (Figure 2, curve 9). Separation of the mixture of all nine selected MRSA isolates is shown in Figure 3. This result confirmed the ability of the CE method to discriminate individual genotype groups of MRSA. In addition, partial separation of the isolates within individual genotype groups was observed as can be seen in the inset figures (zone details) in Figure 3. Almost complete separation of the isolates was observed in the group A where narrow peaks of the individual isolates were detected. The order of the isolate zones was determined experimentally by the standard addition method again. Only partial separation of the isolates was observed in the groups C and B. The order of the isolates in the zones of the groups C and B was therefore not further determined. Further optimization of the separation conditions did not improve the separation of the individual isolates of the groups C and B. Because of the higher conductivity of the phosphate buffer used to rinse the capillary, the migration times of the isolate zones increased (which agrees with our previous results [32]), the detected zones were very narrow and their resolution increased. All the MRSA isolates were also analyzed individually. Summary of the sample analyses is given in Supplementary Table S1. The mean values of standard deviation (SD) and relative standard deviation (RSD) of the migration times of the bacteria zones calculated from all analyses were 13.25 s and 0.58 %, respectively. The proposed CE method enables reliable discrimination of the genotype groups of MRSA. In addition, the

1
2
3
4
5
6
7
8
9
10
11
12
13
14
15
16
17
18
19
20
21
22
23
24
25
26
27
28
29
30
31
32
33
34
35
36
37
38
39
40
41
42
43
44
45
46
47
48
49
50
51
52
53
54
55
56
57
58
59
60
61
62
63
64
65

obtained results suggest the possibility to separate individual isolates of a single genotype group.

3.3. MEKC separation of MRSA isolates of the genotype group A in a blood sample

Human blood sample was used in the next experiments to demonstrate the ability of the proposed CE method to analyze MRSA isolates in clinical samples. The blood sample was spiked with the examined MRSA isolates of the genotype group A (FS195, FS196 and FS197; concentration of each bacterium was 50 cells mL⁻¹), processed and analyzed by the optimized CE method (in the SCW-etched capillary at 20 °C). Schematic illustration of the procedure is shown in Figure 4. In this case, 100 µL of the prepared sample was dynamically injected into the capillary when the bacterial cells were adhered to the etched surface of the capillary and subsequently analyzed. The procedure enabling online concentration and separation of bacterial cells is described in detail in [32]. Three peaks of the MRSA isolates were detected upon the MEKC separation as shown in electropherogram in Figure 4. Their migration times were practically the same as in the analysis of the cultivated bacteria proving that the results obtained by this method are independent of the sample matrix. The recovery of the method was approximately 80 %.

4. Conclusion

MRSA isolates of three genotype groups differing in sequence type, *spa* type and type of staphylococcal chromosome cassette *mec* were separated in the FS capillary with a roughened inner surface. Experimental conditions were optimized to allow discrimination of the individual genotype groups, which was the main goal of this study. Especially the changes in separation

1 temperature and in the capillary rinsing procedure played the key role in the optimization
2 process. Whole analysis can be done in 60 min including sample preparation and rinsing of the
3 capillary. The developed method even enabled partial separation of the MRSA isolates within
4 individual genotype groups indicating the effect of phenotypic differences between strains.
5
6 However, their complete separation would require further extensive investigation. Similar
7 results were obtained by concentrating and separating the MRSA isolates in blood sample.
8
9 Recovery of the method was around 80 %.
10
11
12
13
14
15
16
17
18

19 **Acknowledgements**

20
21
22
23
24 This work was supported by Ministry of Health of the Czech Republic (Grant No. NU22-05-
25 00110), by the project National Institute of Virology and Bacteriology (Programme EXCELES,
26 ID Project No. LX22NPO5103) funded by the European Union - Next Generation EU, and by
27 the Czech Academy of Sciences (Institutional Support RVO:68081715).
28
29
30
31
32
33
34
35
36

37 **Declaration of competing interest**

38
39
40
41 The authors declare that they have no known competing financial interests or personal
42 relationships that could have appeared to influence the work reported in this paper.
43
44
45
46
47
48
49
50
51
52
53
54
55
56
57
58
59
60
61
62
63
64
65

References

- 1
2
3
4
5 [1] R.J. Gordon, F.D. Lowy, Pathogenesis of methicillin-resistant *Staphylococcus aureus*
6
7 infection, *Clinical Infectious Diseases* 46 (2008) S350-S359.
8
9
10
11
12 [2] F. Menichetti, Current and emerging serious Gram-positive infections, *Clinical*
13
14 *Microbiology and Infection* 11 (2005) 22-28.
15
16
17
18
19 [3] R.R. Watkins, M.Z. David, R.A. Salata, Current concepts on the virulence mechanisms of
20
21 methicillin-resistant *Staphylococcus aureus*, *Journal of Medical Microbiology* 61(9) (2012)
22
23 1179-1193.
24
25
26
27
28
29 [4] K.R. Kirker, G.A. James, P. Fleckman, J.E. Olerud, P.S. Stewart, Differential effects of
30
31 planktonic and biofilm MRSA on human fibroblasts, *Wound Repair and Regeneration* 20(2)
32
33 (2012) 253-261.
34
35
36
37
38
39 [5] L. Li, M.R. Yeaman, A.S. Bayer, Y.Q. Xiong, Phenotypic and Genotypic Characteristics of
40
41 Methicillin-Resistant *Staphylococcus aureus* (MRSA) Related to Persistent Endovascular
42
43 Infection, *Antibiotics-Basel* 8(2) (2019).
44
45
46
47
48
49 [6] Y.Q. Xiong, V.G. Fowler, M.R. Yeaman, F. Perdreau-Remington, B.N. Kreiswirth, A.S.
50
51 Bayer, Phenotypic and Genotypic Characteristics of Persistent Methicillin-Resistant
52
53 *Staphylococcus aureus* Bacteremia In Vitro and in an Experimental Endocarditis Model,
54
55 *Journal of Infectious Diseases* 199(2) (2009) 201-208.
56
57
58
59
60
61
62
63
64
65

1 [7] K. Seidl, A.S. Bayer, V.G. Fowler, J.A. McKinnell, W.A. Hady, G. Sakoulas, M.R. Yeaman,
2 Y.Q. Xiong, Combinatorial Phenotypic Signatures Distinguish Persistent from Resolving
3 Methicillin-Resistant *Staphylococcus aureus* Bacteremia Isolates, *Antimicrobial Agents and*
4 *Chemotherapy* 55(2) (2011) 575-582.
5
6

7
8
9
10
11 [8] M. Horka, M. Tesarova, P. Karasek, F. Ruzicka, V. Hola, M. Sittova, M. Roth,
12 Determination of methicillin-resistant and methicillin-susceptible *Staphylococcus aureus*
13 bacteria in blood by capillary zone electrophoresis, *Analytica Chimica Acta* 868 (2015) 67-72.
14
15
16

17
18
19
20
21 [9] F.C. Tenover, R. Arbeit, G. Archer, J. Biddle, S. Byrne, R. Goering, G. Hancock, G.A.
22 Hebert, B. Hill, R. Hollis, W.R. Jarvis, B. Kreiswirth, W. Eisner, J. Maslow, L.K. McDougal,
23 J.M. Miller, M. Mulligan, M.A. Pfaller, Comparison of Traditional and Molecular Methods of
24 Typing Isolates of *Staphylococcus aureus*, *Journal of Clinical Microbiology* 32(2) (1994) 407-
25 415.
26
27
28
29
30
31

32
33
34
35
36 [10] V.G. Fowler, G. Sakoulas, L.M. McIntyre, V.G. Meka, R.D. Arbeit, C.H. Cabell, M.E.
37 Stryjewski, G.M. Eliopoulos, L.B. Reller, G.R. Corey, T. Jones, N. Lucindo, M.R. Yeaman,
38 A.S. Bayer, Persistent bacteremia due to methicillin-resistant *Staphylococcus aureus* infection
39 is associated with agr dysfunction and low-level in vitro resistance to thrombin-induced platelet
40 microbicidal protein, *Journal of Infectious Diseases* 190(6) (2004) 1140-1149.
41
42
43
44
45
46
47
48
49

50
51 [11] B. Shopsin, M. Gomez, S.O. Montgomery, D.H. Smith, M. Waddington, D.E. Dodge, D.A.
52 Bost, M. Riehman, S. Naidich, B.N. Kreiswirth, Evaluation of protein A gene polymorphic
53 region DNA sequencing for typing of *Staphylococcus aureus* strains, *Journal of Clinical*
54 *Microbiology* 37(11) (1999) 3556-3563.
55
56
57
58
59
60
61
62

1
2 [12] T.M.A. Weller, Methicillin-resistant *Staphylococcus aureus* typing methods: which should
3
4 be the international standard?, *Journal of Hospital Infection* 44(3) (2000) 160-172.
5
6

7
8
9 [13] L. Challagundla, J. Reyes, I. Rafiqullah, D.O. Sordelli, G. Echaniz-Aviles, M.E.
10
11 Velazquez-Meza, S. Castillo-Ramirez, N. Fittipaldi, M. Feldgarden, S.B. Chapman, M.S.
12
13 Calderwood, L.P. Carvajal, S. Rincon, B. Hanson, P.J. Planet, C.A. Arias, L. Diaz, D.A.
14
15 Robinson, Phylogenomic Classification and the Evolution of Clonal Complex 5 Methicillin-
16
17 Resistant *Staphylococcus aureus* in the Western Hemisphere, *Frontiers in Microbiology* 9
18
19 (2018) 1901.
20
21
22

23
24
25 [14] A. Dreisbach, M.M. van der Kooi-Pol, A. Otto, K. Gronau, H.P.J. Bonarius, H. Westra, H.
26
27 Groen, D. Becher, M. Hecker, J.M. van Dijl, Surface shaving as a versatile tool to profile global
28
29 interactions between human serum proteins and the *Staphylococcus aureus* cell surface,
30
31 *Proteomics* 11(14) (2011) 2921-2930.
32
33
34

35
36
37 [15] A.I. Hartstein, V.H. Morthland, S. Eng, G.L. Archer, F.D. Schoenknecht, A.L. Rashad,
38
39 Restriction Enzyme Analysis of Plasmid DNA and Bacteriophage-Typing of Paired
40
41 *Staphylococcus aureus* Blood Culture Isolates, *Journal of Clinical Microbiology* 27(8) (1989)
42
43 1874-1879.
44
45
46

47
48
49 [16] A. Wieser, S. Schubert, MALDI-TOF MS entering the microbiological diagnostic
50
51 laboratory - from fast identification to resistance testing, *Trac-Trends in Analytical Chemistry*
52
53 84 (2016) 80-87.
54
55
56
57
58
59
60
61
62

1 [17] V. Sandalakis, I. Goniotakis, I. Vranakis, D. Chochlakis, A. Psaroulaki, Use of MALDI-
2 TOF mass spectrometry in the battle against bacterial infectious diseases: recent achievements
3 and future perspectives, *Expert Review of Proteomics* 14(3) (2017) 253-267.
4
5
6

7
8
9 [18] M. Wolters, H. Rohde, T. Maier, C. Belmar-Campos, G. Franke, S. Scherpe, M.
10 Aepfelbacher, M. Christner, MALDI-TOF MS fingerprinting allows for discrimination of
11 major methicillin-resistant *Staphylococcus aureus* lineages, *International Journal of Medical*
12 *Microbiology* 301(1) (2011) 64-68.
13
14
15
16

17
18
19 [19] O. Ueda, S. Tanaka, Z. Nagasawa, H. Hanaki, T. Shobuike, H. Miyamoto, Development
20 of a novel matrix-assisted laser desorption/ionization time-of-flight mass spectrum (MALDI-
21 TOF-MS)-based typing method to identify methicillin-resistant *Staphylococcus aureus* clones,
22 *Journal of Hospital Infection* 90(2) (2015) 147-155.
23
24
25
26

27
28
29 [20] C. Ostergaard, S.G.K. Hansen, J.K. Moller, Rapid first-line discrimination of methicillin
30 resistant *Staphylococcus aureus* strains using MALDI-TOF MS, *International Journal of*
31 *Medical Microbiology* 305(8) (2015) 838-847.
32
33
34
35

36
37
38 [21] M. Sauget, B. Valot, X. Bertrand, D. Hocquet, Can MALDI-TOF Mass Spectrometry
39 Reasonably Type Bacteria?, *Trends in Microbiology* 25(6) (2017) 447-455.
40
41
42
43

44
45
46 [22] V. Paskova, K. Chudejova, A. Sramkova, L. Kraftova, V. Jakubu, E.A. Petinaki, H.
47 Zemlickova, K. Neradova, C.C. Papagiannitsis, J. Hrabak, Insufficient repeatability and
48 reproducibility of MALDI-TOF MS-based identification of MRSA, *Folia Microbiologica* 65(5)
49 (2020) 895-900.
50
51
52
53
54
55
56
57
58
59
60
61
62

1 [23] A. Pfetsch, T. Welsch, Determination of the electrophoretic mobility of bacteria and their
2 separation by capillary zone electrophoresis, Fresenius Journal of Analytical Chemistry 359(2)
3
4 (1997) 198-201.
5
6

7
8
9 [24] M. Horka, P. Karasek, F. Ruzicka, M. Dvorackova, M. Sittova, M. Roth, Separation of
10 Methicillin-Resistant from Methicillin-Susceptible *Staphylococcus aureus* by Electrophoretic
11 Methods in Fused Silica Capillaries Etched with Supercritical Water, Analytical Chemistry
12
13 86(19) (2014) 9701-9708.
14
15
16
17
18

19
20
21 [25] A.T. Poortinga, R. Bos, W. Norde, H.J. Busscher, Electric double layer interactions in
22 bacterial adhesion to surfaces, Surface Science Reports 47(1) (2002) 3-32.
23
24
25
26

27
28
29 [26] H.H.M. Rijnaarts, W. Norde, J. Lyklema, A.J.B. Zehnder, The Isoelectric Point of Bacteria
30 as an Indicator for the Presence of Cell-Surface Polymers that Inhibit Adhesion, Colloids and
31 Surfaces B-Biointerfaces 4(4) (1995) 191-197.
32
33
34
35

36
37
38 [27] D.W. Armstrong, G. Schulte, J.M. Schneiderheinze, D.J. Westenberg, Separating microbes
39 in the manner of molecules. 1. Capillary electrokinetic approaches, Analytical Chemistry
40
41 71(24) (1999) 5465-5469.
42
43
44
45

46
47
48 [28] A. Roosjen, H.J. Kaper, H.C. van der Mei, W. Norde, H.J. Busscher, Inhibition of adhesion
49 of yeasts and bacteria by poly(ethylene oxide)-brushes on glass in a parallel plate flow chamber,
50
51 Microbiology 149 (2003) 3239-3246.
52
53
54
55
56
57
58
59
60
61
62

1 [29] M.J. Desai, D.W. Armstrong, Separation, identification, and characterization of
2 microorganisms by capillary electrophoresis, *Microbiology and Molecular Biology Reviews*
3
4 67(1) (2003) 38-51.
5
6

7
8
9 [30] M. Horka, P. Karasek, M. Roth, F. Ruzicka, Pre-concentration and separation of bacteria
10 by volume coupling electrophoresis on supercritical water-etched fused silica capillary with
11
12 two segments of different internal diameters and inner surface roughnesses, *Analytical and*
13
14 *Bioanalytical Chemistry* 410(1) (2018) 167-175.
15
16
17

18
19
20
21 [31] M. Horka, P. Karasek, M. Roth, K. Slais, Fused silica capillaries with two segments of
22 different internal diameters and inner surface roughnesses prepared by etching with
23
24 supercritical water and used for volume coupling electrophoresis, *Electrophoresis* 38(9-10)
25
26 (2017) 1260-1267.
27
28
29

30
31
32
33 [32] M. Horka, J. Salplachta, P. Karasek, F. Ruzicka, M. Roth, Online Concentration of Bacteria
34 from Tens of Microliter Sample Volumes in Roughened Fused Silica Capillary with Subsequent
35
36 Analysis by Capillary Electrophoresis and Matrix-Assisted Laser Desorption/Ionization Time-
37
38 of-Flight Mass Spectrometry, *Acs Infectious Diseases* 6(3) (2020) 355-365.
39
40
41
42

43
44
45 [33] A. Rogacs, J.G. Santiago, Temperature Effects on Electrophoresis, *Analytical Chemistry*
46
47 85(10) (2013) 5103-5113.
48
49
50

51
52
53 [34] M. Horka, K. Slais, P. Karasek, F. Ruzicka, J. Salplachta, J. Sestak, V. Kahle, M. Roth,
54
55 Capillary electrophoresis in a fused-silica capillary with surface roughness gradient, *Journal of*
56
57 *Separation Science* 39(19) (2016) 3827-3834.
58
59
60

1
2 [35] P. Karasek, M. Horka, K. Slais, J. Planeta, M. Roth, Supercritical water-treated fused silica
3
4 capillaries in analytical separations: Status review, *Journal of Chromatography A* 1539 (2018)
5
6
7 1-11.

8
9
10
11 [36] J. Salplachta, A. Kubesova, M. Horka, Latest improvements in CIEF: From proteins to
12
13 microorganisms, *Proteomics* 12(19-20) (2012) 2927-2936.
14
15
16

17
18
19 [37] M.C. Enright, N.P.J. Day, C.E. Davies, S.J. Peacock, B.G. Spratt, Multilocus sequence
20
21 typing for characterization of methicillin-resistant and methicillin-susceptible clones of
22
23 *Staphylococcus aureus*, *Journal of Clinical Microbiology* 38(3) (2000) 1008-1015.
24
25
26

27
28
29 [38] C. Cuny, M.M.H. Abdelbary, R. Kock, F. Layer, W. Scheidemann, G. Werner, W. Witte,
30
31 Methicillin-resistant *Staphylococcus aureus* from infections in horses in Germany are frequent
32
33 colonizers of veterinarians but rare among MRSA from infections in humans, *One Health* 2
34
35 (2016) 11-17.
36
37
38

39
40
41 [39] K. Neradova, M. Fridrichova, V. Jakub, K. Pomorska, H. Zemlickova, Epidemiological
42
43 characteristics of methicillin-resistant *Staphylococcus aureus* isolates from bloodstream
44
45 cultures at University Hospital in the Czech Republic, *Folia Microbiologica* 65(3) (2020) 615-
46
47
48 622.
49
50
51

52
53 [40] H. Grundmann, D.M. Aanensen, C.C. van den Wijngaard, B.G. Spratt, D. Harmsen, A.W.
54
55 Friedrich, R. European Staphylococcal Reference Laboratory Working Group, Geographic
56
57
58
59
60
61
62

1
2
3
4
5
6
7
8
9
10
11
12
13
14
15
16
17
18
19
20
21
22
23
24
25
26
27
28
29
30
31
32
33
34
35
36
37
38
39
40
41
42
43
44
45
46
47
48
49
50
51
52
53
54
55
56
57
58
59
60
61
62
63
64
65

Distribution of *Staphylococcus aureus* Causing Invasive Infections in Europe: A Molecular-Epidemiological Analysis, Plos Medicine 7(1) (2010) e1000215.

[41] M. Horka, F. Ruzicka, V. Hola, K. Slais, Capillary isoelectric focusing of microorganisms in the pH range 2–5 in a dynamically modified FS capillary with UV detection, Analytical and Bioanalytical Chemistry 385(5) (2006) 840-846.

[42] J. Salplachta, M. Horka, P. Karasek, F. Ruzicka, M. Roth, Identification of *Aspergillus* Conidia in Bronchoalveolar Lavage Using Offline Combination of Capillary Electrophoresis in Supercritical Water-Treated Fused Silica Capillary and Matrix-Assisted Laser Desorption/Ionization Time-of-Flight Mass Spectrometry, Analytical Chemistry 92(11) (2020) 7588-7595.

[43] M. Horka, P. Karasek, J. Salplachta, F. Ruzicka, D. Stverakova, R. Pantucek, M. Roth, Nano-etched fused-silica capillary used for on-line preconcentration and electrophoretic separation of bacteriophages from large blood sample volumes with off-line MALDI-TOF mass spectrometry identification, Microchimica Acta 187(3) (2020) 177.

[44] M. Rezaei, A.R. Azimian, D.T. Semiromi, The surface charge density effect on the electro-osmotic flow in a nanochannel: a molecular dynamics study, Heat and Mass Transfer 51(5) (2015) 661-670.

[45] N. Kumar, J.H. Arakeri, Experimental investigation of effect of orientation and surface roughness on drying of porous media consisting of rods, International Journal of Multiphase Flow 109 (2018) 114-122.

Tables

Table S1. Reproducibility of the migration times of the individual MRSA isolates belonging to the different genotype groups (A, B, and C). The separation conditions were the same as in the analysis shown in Figure 3.

Genotype	A			B			C		
Isolate	FS197	FS196	FS195	FS180	FS183	FS193	FS198	FS199	FS200
Run No.	Migration time [s]								
1	2207	2233	2231	2354	2334	2356	2272	2292	2315
2	2239	2230	2238	2321	2338	2341	2255	2269	2298
3	2242	2228	2259	2309	2341	2336	2262	2287	2309
4	2218	2217	2219	2322	2339	2338	2266	2303	2304
5	2244	2234	2225	2308	2358	2352	2304	2299	2273
6	2210	2241	2209	2340	2343	2355	2301	2306	2318
7	2231	2235	2225	2312	2335	2343	2275	2312	2316
8	2208	2236	2248	2318	2339	2361	2278	2279	2269
9	2223	2219	2251	2351	2350	2360	2281	2287	2287
10	2212	2216	2254	2323	2348	2356	2275	2313	2314
Mean	2223.4	2228.9	2235.9	2325.8	2342.5	2349.8	2276.9	2294.7	2300.3
value	2229.4			2339.4			2295.3		
SD [s]	13.84	8.28	15.85	16.76	7.47	8.90	15.58	14.46	18.14
RSD [%]	0.66	0.37	0.71	0.72	0.32	0.38	0.68	0.63	0.79

Figure captions

Figure 1. MEKC separation of MRSA genotype groups, A, B and C, and SEM images of the inner capillary surfaces; (A–D) optimization of the separation conditions, (E) detail view of the MEKC separation of the individual isolates of the genotype groups, A, B and C.

Figure 2. The effect of pH on the electroosmotic mobility in the smooth (curves 1 and 2) and SCW-etched FS capillary (curves 3–9) with respect to the BGE composition, rinsing procedure and temperature of the separation; neutral marker of EOF, thiourea; UV detection, 235 nm.

Figure 3. Separation of the individual MRSA isolates of the genotype groups A, B, and C under the optimized MEKC conditions. Detail view of the detected zones of the isolates.

Figure 4. Separation of MRSA isolates FS195, FS196 and FS197 (genotype group A) from spiked blood.

MEKC of MSSA and MRSA (genotype groups)

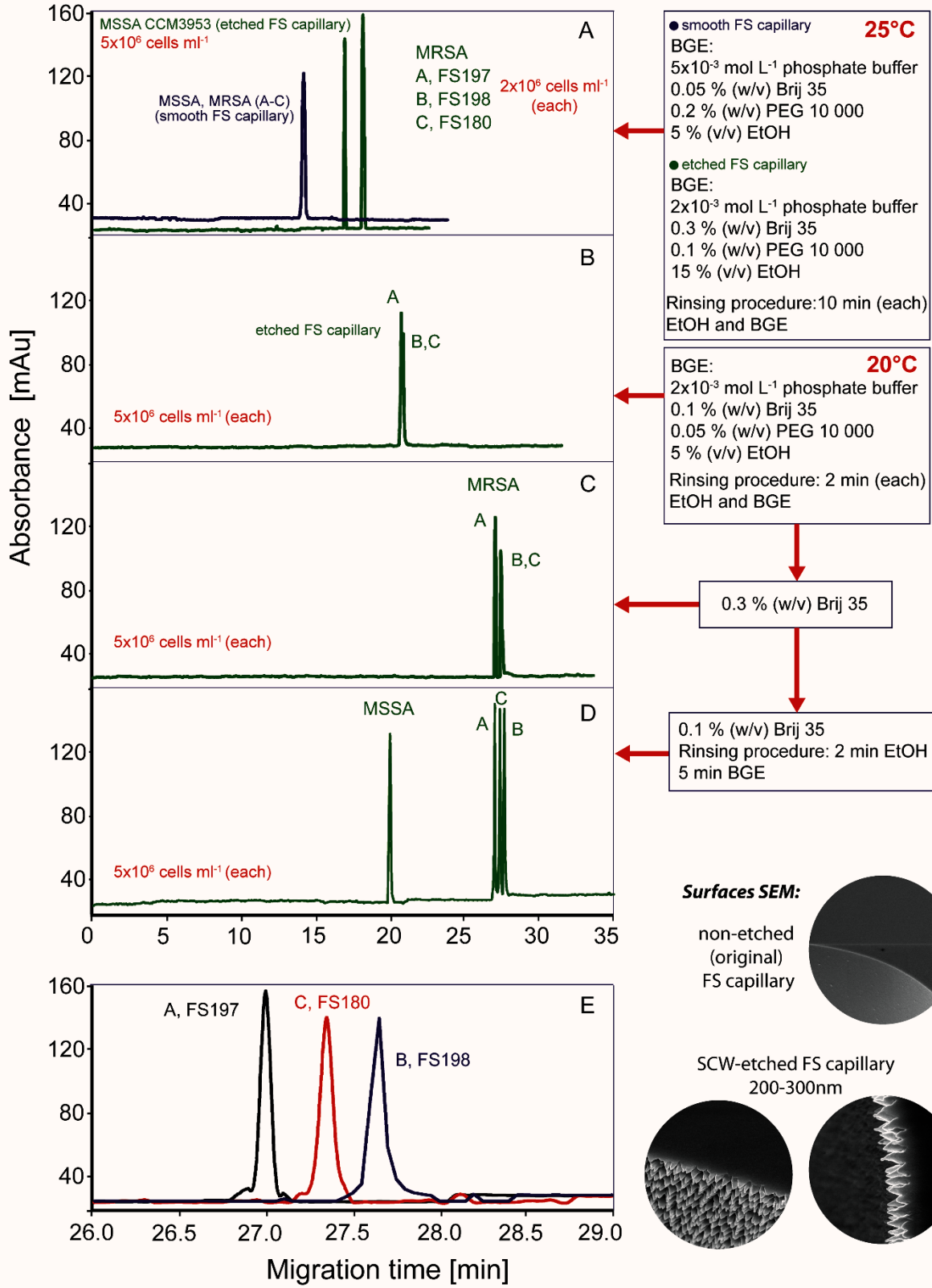


Figure 1

Electroosmotic mobility in smooth (1,2) and SCW-etched FS capillary (3-9)

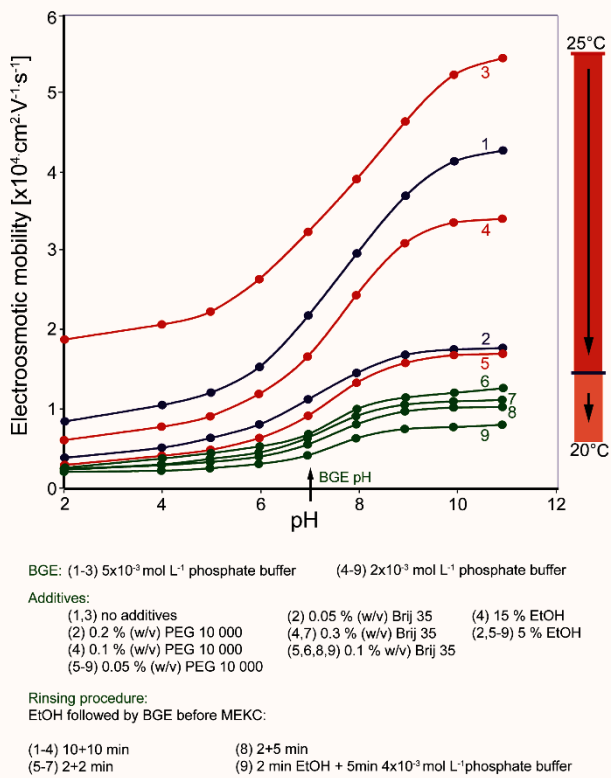


Figure 2

MEKC of the MRSA isolates of genotype groups A, B, C

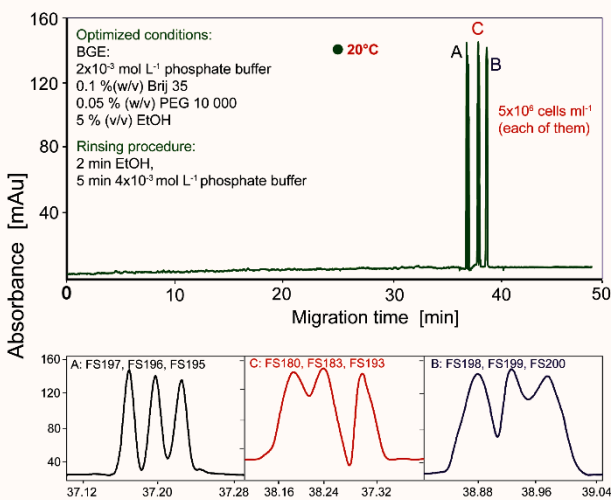


Figure 3

1
2
3
4
5
6
7
8
9
10
11
12
13
14
15
16
17
18
19
20
21
22
23
24
25
26
27
28
29
30
31
32
33
34
35
36
37
38
39
40
41
42
43
44
45
46
47
48
49
50
51
52
53
54
55
56
57
58
59
60
61
62
63
64
65

MRSA, strains FS 195, FS 196 and FS 197 in blood

Sample preparation

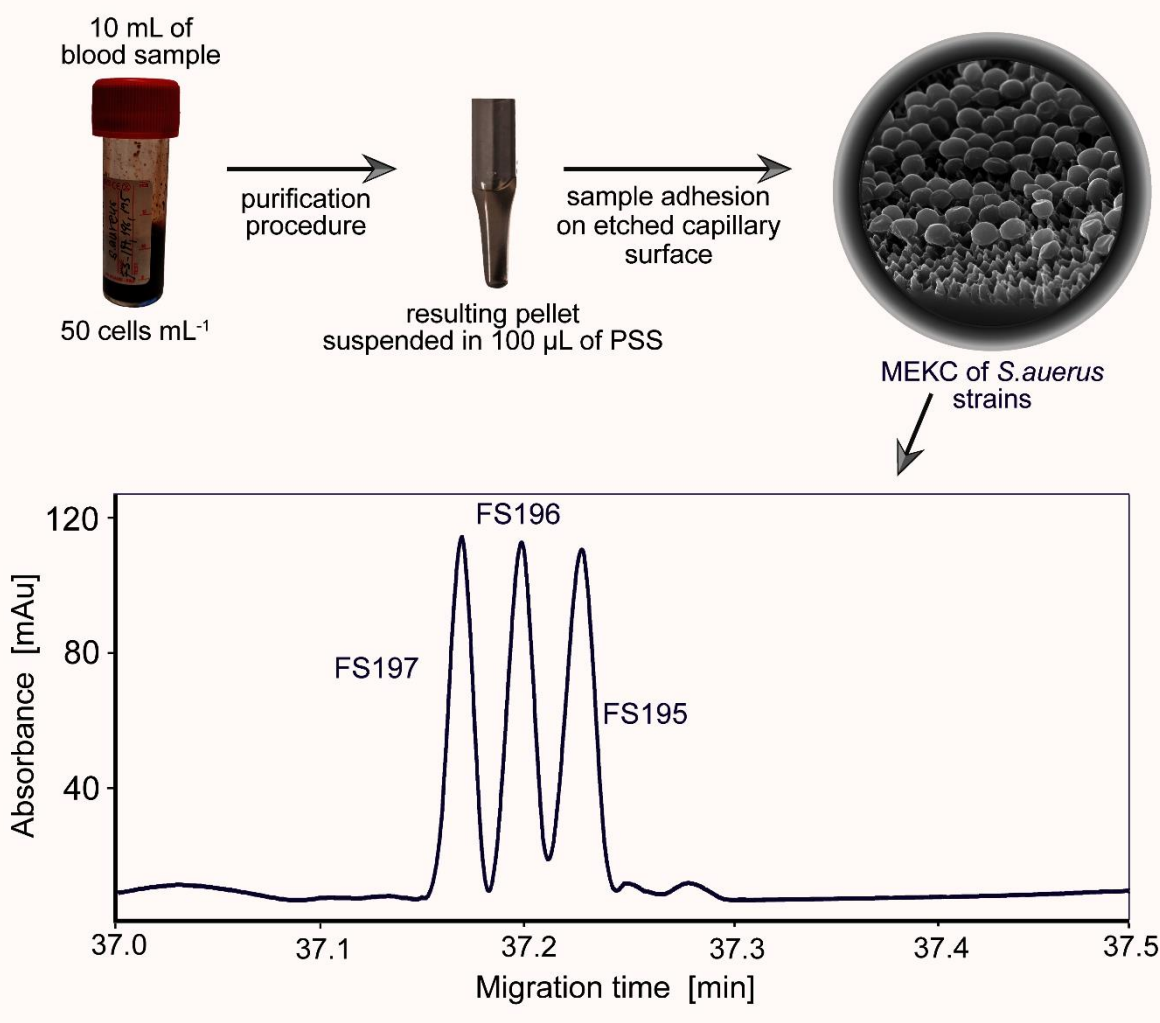


Figure 4