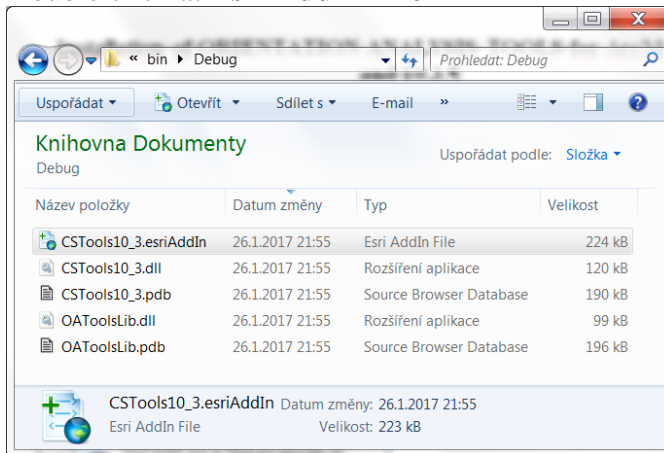


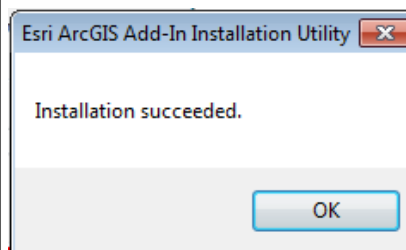
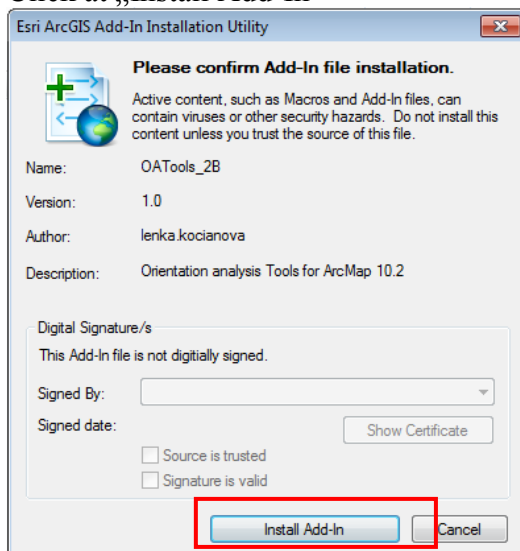
Installation of ORIENTATION ANALYSIS TOOLS for ArcMap v10.2. and 10.3.

Unzip the zip file (CSTools10_2 or 10_3).

Double click at **Esri AddIn File**



Click at „Install Add-In“

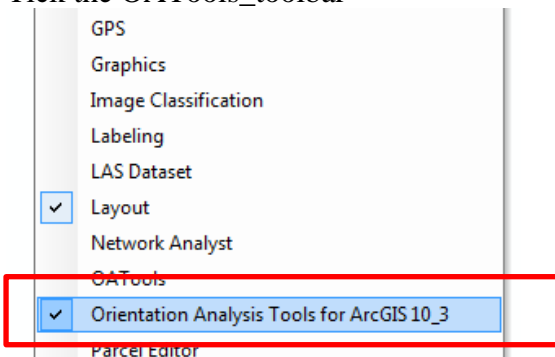


Click OK

Open ArcMap

Right click in the grey space of toolbars (or Customize – Toolbars)

Tick the OATools_toolbar



OATools toolbar appears

